



# Full wwPDB X-ray Structure Validation Report ⓘ

Feb 14, 2017 – 04:15 am GMT

PDB ID : 4I3K  
Title : Crystal structure of a metabolic reductase with 1-hydroxy-6-(4-hydroxybenzyl)-4-methylpyridin-2(1H)-one  
Authors : Zheng, B.; Yao, Y.; Liu, Z.; Deng, L.; Anglin, J.L.; Jiang, H.; Prasad, B.V.V.; Song, Y.  
Deposited on : 2012-11-26  
Resolution : 3.31 Å(reported)

This is a Full wwPDB X-ray Structure Validation Report for a publicly released PDB entry.

We welcome your comments at [validation@mail.wwpdb.org](mailto:validation@mail.wwpdb.org)

A user guide is available at

<http://wwpdb.org/validation/2016/XrayValidationReportHelp>

with specific help available everywhere you see the ⓘ symbol.

---

The following versions of software and data (see [references ⓘ](#)) were used in the production of this report:

MolProbity : 4.02b-467  
Mogul : 1.7.2 (RC1), CSD as538be (2017)  
Xtriage (Phenix) : 1.9-1692  
EDS : trunk28620  
Percentile statistics : 20161228.v01 (using entries in the PDB archive December 28th 2016)  
Refmac : 5.8.0135  
CCP4 : 6.5.0  
Ideal geometry (proteins) : Engh & Huber (2001)  
Ideal geometry (DNA, RNA) : Parkinson et al. (1996)  
Validation Pipeline (wwPDB-VP) : recalc28949

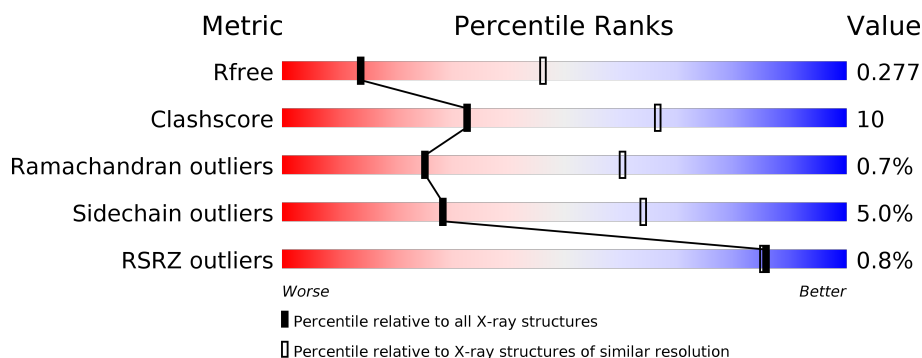
# 1 Overall quality at a glance

The following experimental techniques were used to determine the structure:

*X-RAY DIFFRACTION*

The reported resolution of this entry is 3.31 Å.

Percentile scores (ranging between 0-100) for global validation metrics of the entry are shown in the following graphic. The table shows the number of entries on which the scores are based.



Metric	Whole archive (#Entries)	Similar resolution (#Entries, resolution range(Å))
$R_{free}$	100719	1034 (3.36-3.24)
Clashscore	112137	1100 (3.36-3.24)
Ramachandran outliers	110173	1081 (3.36-3.24)
Sidechain outliers	110143	1080 (3.36-3.24)
RSRZ outliers	101464	1039 (3.36-3.24)

The table below summarises the geometric issues observed across the polymeric chains and their fit to the electron density. The red, orange, yellow and green segments on the lower bar indicate the fraction of residues that contain outliers for  $\geq 3$ , 2, 1 and 0 types of geometric quality criteria. A grey segment represents the fraction of residues that are not modelled. The numeric value for each fraction is indicated below the corresponding segment, with a dot representing fractions  $\leq 5\%$ . The upper red bar (where present) indicates the fraction of residues that have poor fit to the electron density. The numeric value is given above the bar.

Mol	Chain	Length	Quality of chain
1	A	414	<div> <div></div> <div>64% 24% 11%</div> </div>
1	B	414	<div> <div></div> <div>63% 22% 14%</div> </div>

The following table lists non-polymeric compounds, carbohydrate monomers and non-standard residues in protein, DNA, RNA chains that are outliers for geometric or electron-density-fit criteria:

Mol	Type	Chain	Res	Chirality	Geometry	Clashes	Electron density
4	1BX	A	505	-	-	-	X

## 2 Entry composition [i](#)

There are 4 unique types of molecules in this entry. The entry contains 5899 atoms, of which 0 are hydrogens and 0 are deuteriums.

In the tables below, the ZeroOcc column contains the number of atoms modelled with zero occupancy, the AltConf column contains the number of residues with at least one atom in alternate conformation and the Trace column contains the number of residues modelled with at most 2 atoms.

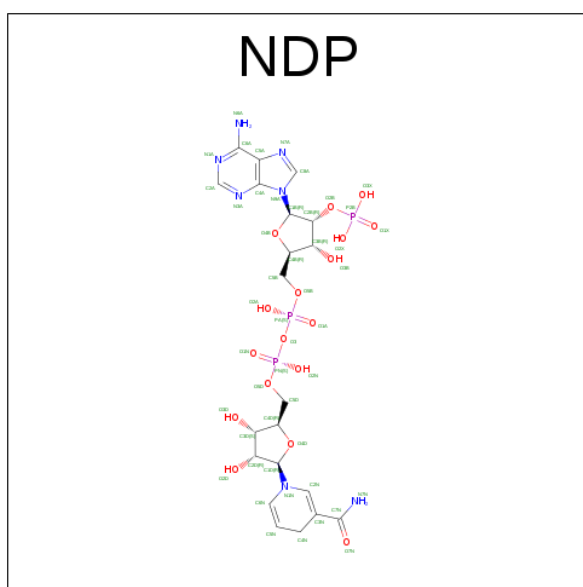
- Molecule 1 is a protein called Isocitrate dehydrogenase [NADP] cytoplasmic.

Mol	Chain	Residues	Atoms					ZeroOcc	AltConf	Trace
1	A	367	Total	C	N	O	S	0	0	0
			2922	1863	493	549	17			
1	B	358	Total	C	N	O	S	0	0	0
			2844	1814	478	535	17			

There are 2 discrepancies between the modelled and reference sequences:

Chain	Residue	Modelled	Actual	Comment	Reference
A	132	HIS	ARG	ENGINEERED MUTATION	UNP O75874
B	132	HIS	ARG	ENGINEERED MUTATION	UNP O75874

- Molecule 2 is NADPH DIHYDRO-NICOTINAMIDE-ADENINE-DINUCLEOTIDE PHOSPHATE (three-letter code: NDP) (formula:  $C_{21}H_{30}N_7O_{17}P_3$ ).



Mol	Chain	Residues	Atoms					ZeroOcc	AltConf
2	A	1	Total	C	N	O	P	0	0
			48	21	7	17	3		

*Continued on next page...*

Continued from previous page...

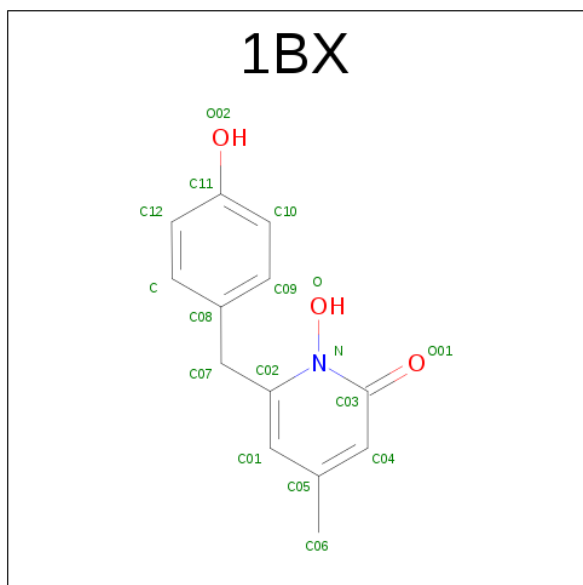
Mol	Chain	Residues	Atoms					ZeroOcc	AltConf
2	B	1	Total	C	N	O	P	0	0
			48	21	7	17	3		

- Molecule 3 is SULFATE ION (three-letter code: SO4) (formula: O<sub>4</sub>S).



Mol	Chain	Residues	Atoms			ZeroOcc	AltConf
3	A	1	Total	O	S	0	0
			5	4	1		
3	A	1	Total	O	S	0	0
			5	4	1		
3	A	1	Total	O	S	0	0
			5	4	1		
3	B	1	Total	O	S	0	0
			5	4	1		

- Molecule 4 is 1-HYDROXY-6-(4-HYDROXYBENZYL)-4-METHYLPYRIDIN-2(1H)-ONE (three-letter code: 1BX) (formula: C<sub>13</sub>H<sub>13</sub>NO<sub>3</sub>).

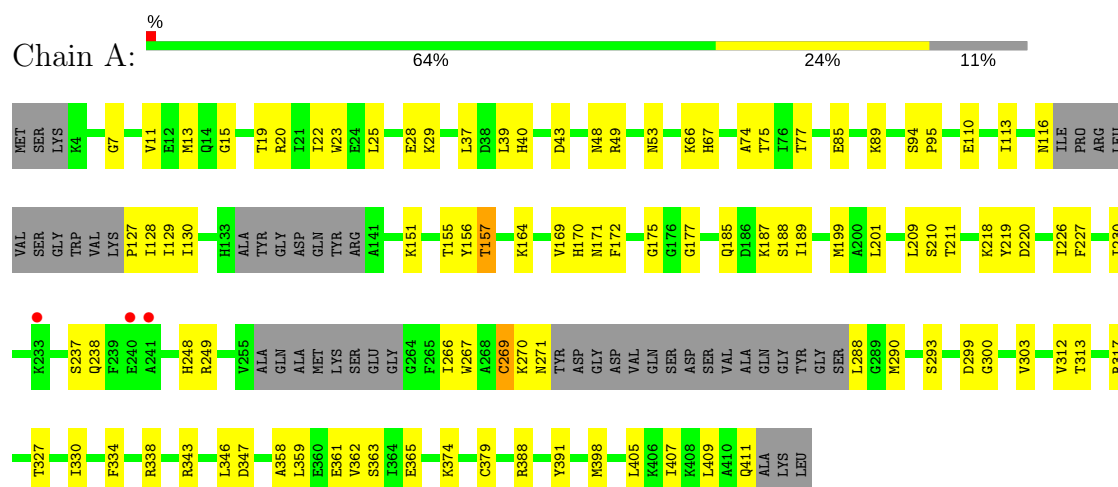


Mol	Chain	Residues	Atoms				ZeroOcc	AltConf
			Total	C	N	O		
4	A	1	17	13	1	3	0	0

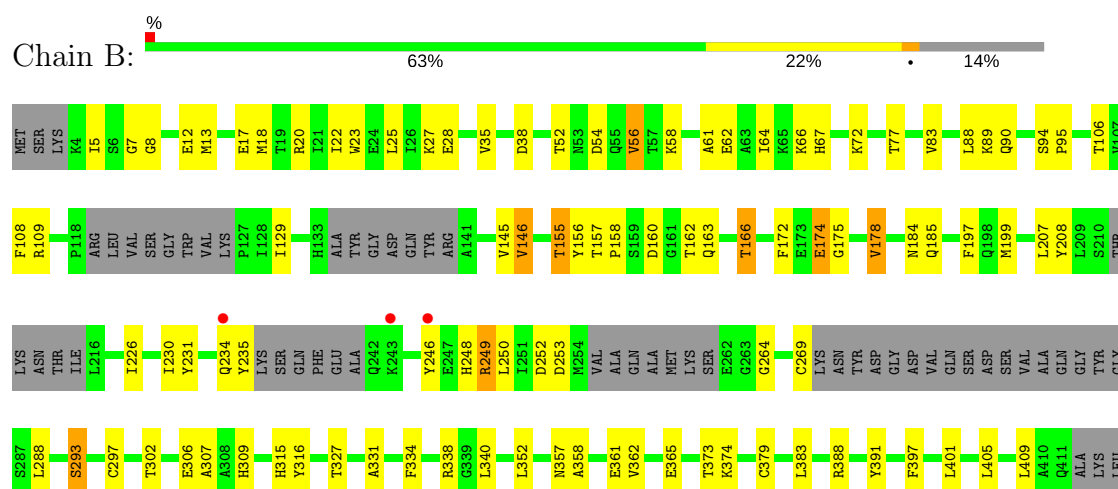
### 3 Residue-property plots

These plots are drawn for all protein, RNA and DNA chains in the entry. The first graphic for a chain summarises the proportions of the various outlier classes displayed in the second graphic. The second graphic shows the sequence view annotated by issues in geometry and electron density. Residues are color-coded according to the number of geometric quality criteria for which they contain at least one outlier: green = 0, yellow = 1, orange = 2 and red = 3 or more. A red dot above a residue indicates a poor fit to the electron density ( $RSRZ > 2$ ). Stretches of 2 or more consecutive residues without any outlier are shown as a green connector. Residues present in the sample, but not in the model, are shown in grey.

#### • Molecule 1: Isocitrate dehydrogenase [NADP] cytoplasmic



#### • Molecule 1: Isocitrate dehydrogenase [NADP] cytoplasmic



## 4 Data and refinement statistics

Property	Value	Source
Space group	P 43 21 2	Depositor
Cell constants a, b, c, $\alpha$ , $\beta$ , $\gamma$	82.86Å 82.86Å 304.04Å 90.00° 90.00° 90.00°	Depositor
Resolution (Å)	49.02 – 3.31 49.02 – 3.31	Depositor EDS
% Data completeness (in resolution range)	88.3 (49.02-3.31) 88.4 (49.02-3.31)	Depositor EDS
$R_{merge}$	(Not available)	Depositor
$R_{sym}$	(Not available)	Depositor
$\langle I/\sigma(I) \rangle$ <sup>1</sup>	3.46 (at 3.33Å)	Xtriage
Refinement program	PHENIX (phenix.refine: 1.8.2_1309)	Depositor
R, $R_{free}$	0.206 , 0.277 0.205 , 0.277	Depositor DCC
$R_{free}$ test set	749 reflections (5.06%)	DCC
Wilson B-factor (Å <sup>2</sup> )	43.2	Xtriage
Anisotropy	0.427	Xtriage
Bulk solvent $k_{sol}$ (e/Å <sup>3</sup> ), $B_{sol}$ (Å <sup>2</sup> )	0.34 , 38.3	EDS
L-test for twinning <sup>2</sup>	$\langle  L  \rangle = 0.43$ , $\langle L^2 \rangle = 0.26$	Xtriage
Estimated twinning fraction	No twinning to report.	Xtriage
$F_o, F_c$ correlation	0.86	EDS
Total number of atoms	5899	wwPDB-VP
Average B, all atoms (Å <sup>2</sup> )	15.0	wwPDB-VP

Xtriage's analysis on translational NCS is as follows: *The largest off-origin peak in the Patterson function is 3.47% of the height of the origin peak. No significant pseudotranslation is detected.*

<sup>1</sup>Intensities estimated from amplitudes.

<sup>2</sup>Theoretical values of  $\langle |L| \rangle$ ,  $\langle L^2 \rangle$  for acentric reflections are 0.5, 0.333 respectively for untwinned datasets, and 0.375, 0.2 for perfectly twinned datasets.



## 5 Model quality [i](#)

### 5.1 Standard geometry [i](#)

Bond lengths and bond angles in the following residue types are not validated in this section: 1BX, NDP, SO4

The Z score for a bond length (or angle) is the number of standard deviations the observed value is removed from the expected value. A bond length (or angle) with  $|Z| > 5$  is considered an outlier worth inspection. RMSZ is the root-mean-square of all Z scores of the bond lengths (or angles).

Mol	Chain	Bond lengths		Bond angles	
		RMSZ	$\# Z  > 5$	RMSZ	$\# Z  > 5$
1	A	0.51	0/2980	0.63	1/4012 (0.0%)
1	B	0.51	0/2900	0.63	0/3903
All	All	0.51	0/5880	0.63	1/7915 (0.0%)

There are no bond length outliers.

All (1) bond angle outliers are listed below:

Mol	Chain	Res	Type	Atoms	Z	Observed(°)	Ideal(°)
1	A	346	LEU	CA-CB-CG	5.95	128.99	115.30

There are no chirality outliers.

There are no planarity outliers.

### 5.2 Too-close contacts [i](#)

In the following table, the Non-H and H(model) columns list the number of non-hydrogen atoms and hydrogen atoms in the chain respectively. The H(added) column lists the number of hydrogen atoms added and optimized by MolProbity. The Clashes column lists the number of clashes within the asymmetric unit, whereas Symm-Clashes lists symmetry related clashes.

Mol	Chain	Non-H	H(model)	H(added)	Clashes	Symm-Clashes
1	A	2922	0	2899	62	0
1	B	2844	0	2811	55	0
2	A	48	0	26	8	0
2	B	48	0	26	3	0
3	A	15	0	0	2	0
3	B	5	0	0	0	0
4	A	17	0	13	5	0
All	All	5899	0	5775	116	0

The all-atom clashscore is defined as the number of clashes found per 1000 atoms (including hydrogen atoms). The all-atom clashscore for this structure is 10.

All (116) close contacts within the same asymmetric unit are listed below, sorted by their clash magnitude.

Atom-1	Atom-2	Interatomic distance (Å)	Clash overlap (Å)
1:A:15:GLY:O	1:A:20:ARG:NH1	2.06	0.89
1:A:53:ASN:OD1	1:A:89:LYS:NZ	2.09	0.85
2:A:501:NDP:H5N	4:A:505:1BX:C09	2.07	0.84
2:A:501:NDP:H5N	4:A:505:1BX:H8	1.68	0.73
1:A:75:THR:O	2:A:501:NDP:H2N	1.88	0.73
1:A:330:ILE:HD12	1:A:363:SER:HB3	1.70	0.72
1:A:374:LYS:NZ	3:A:502:SO4:O1	2.23	0.71
1:A:226:ILE:O	1:A:230:ILE:HG12	1.91	0.71
1:A:151:LYS:HE3	1:A:171:ASN:ND2	2.11	0.66
1:A:157:THR:HG23	1:A:164:LYS:HB3	1.77	0.64
1:A:361:GLU:O	1:A:365:GLU:HG2	1.99	0.62
1:A:77:THR:OG1	4:A:505:1BX:H4	2.01	0.60
1:A:199:MET:HG3	1:A:266:ILE:HD12	1.86	0.58
1:A:75:THR:H	2:A:501:NDP:C7N	2.17	0.57
1:A:19:THR:HG21	1:A:74:ALA:HB3	1.86	0.57
1:B:77:THR:N	2:B:501:NDP:O2D	2.26	0.57
2:A:501:NDP:H42N	4:A:505:1BX:H6	1.86	0.57
1:A:22:ILE:HD11	1:A:327:THR:HB	1.88	0.55
1:B:109:ARG:HG3	1:B:293:SER:HB2	1.88	0.55
1:A:218:LYS:HE2	1:B:145:VAL:HG23	1.87	0.55
1:A:11:VAL:HA	1:A:40:HIS:HB2	1.88	0.55
1:A:25:LEU:HD13	1:A:398:MET:HG3	1.88	0.54
1:B:23:TRP:CD1	1:B:27:LYS:HE3	2.42	0.54
1:A:28:GLU:OE1	1:A:29:LYS:NZ	2.41	0.54
1:B:388:ARG:O	1:B:388:ARG:NH1	2.41	0.54
1:A:75:THR:O	2:A:501:NDP:N7N	2.41	0.54
1:B:58:LYS:O	1:B:62:GLU:HG2	2.07	0.54
1:A:407:ILE:O	1:A:411:GLN:HG3	2.08	0.53
1:A:209:LEU:HD22	1:A:227:PHE:CD2	2.44	0.52
1:B:357:ASN:O	1:B:361:GLU:HG3	2.09	0.52
1:B:374:LYS:HD2	1:B:391:TYR:CZ	2.46	0.51
1:B:334:PHE:O	1:B:338:ARG:HG2	2.10	0.51
1:B:77:THR:H	2:B:501:NDP:HO2N	1.51	0.51
1:B:226:ILE:O	1:B:230:ILE:HG12	2.11	0.50
1:A:28:GLU:HG2	1:A:29:LYS:HG3	1.93	0.50
1:B:8:GLY:O	1:B:38:ASP:N	2.41	0.49
1:B:83:VAL:HG13	1:B:88:LEU:HB2	1.94	0.49

*Continued on next page...*

*Continued from previous page...*

Atom-1	Atom-2	Interatomic distance (Å)	Clash overlap (Å)
1:B:234:GLN:HB2	1:B:235:TYR:CD1	2.48	0.49
1:B:158:PRO:HD2	1:B:163:GLN:O	2.12	0.49
1:A:113:ILE:HG13	1:A:127:PRO:HG3	1.93	0.49
1:A:317:ARG:NE	3:A:503:SO4:O2	2.35	0.49
1:B:17:GLU:O	1:B:20:ARG:HB3	2.13	0.48
1:B:405:LEU:O	1:B:409:LEU:HB2	2.13	0.48
1:B:22:ILE:HD11	1:B:327:THR:HB	1.95	0.48
1:B:146:VAL:HG11	1:B:172:PHE:CZ	2.48	0.48
1:B:61:ALA:HA	1:B:64:ILE:HD12	1.95	0.48
1:B:307:ALA:HB1	1:B:309:HIS:CE1	2.48	0.48
1:B:358:ALA:O	1:B:362:VAL:HG23	2.14	0.47
1:B:207:LEU:C	1:B:208:TYR:HD1	2.18	0.47
1:B:231:TYR:CZ	1:B:246:TYR:HB3	2.50	0.47
1:B:129:ILE:HG21	1:B:199:MET:HE2	1.96	0.47
1:B:108:PHE:CE1	1:B:199:MET:HG2	2.49	0.47
1:B:361:GLU:O	1:B:365:GLU:HG3	2.13	0.47
1:A:219:TYR:HA	1:B:178:VAL:HG21	1.95	0.47
1:A:288:LEU:C	1:A:290:MET:H	2.17	0.47
1:A:7:GLY:HA3	1:A:37:LEU:HD23	1.97	0.47
1:A:211:THR:OG1	1:A:248:HIS:NE2	2.35	0.46
1:A:128:ILE:HG22	1:A:130:ILE:HG13	1.98	0.46
1:B:72:LYS:NZ	1:B:306:GLU:OE1	2.48	0.46
1:B:155:THR:HB	1:B:166:THR:HB	1.97	0.46
1:A:359:LEU:HD13	1:A:405:LEU:HD22	1.98	0.46
1:B:18:MET:HB2	1:B:316:TYR:HB2	1.98	0.45
1:B:7:GLY:HA2	1:B:352:LEU:HD22	1.99	0.45
1:A:267:TRP:NE1	1:A:269:CYS:SG	2.86	0.45
1:A:43:ASP:HB3	1:A:48:ASN:ND2	2.32	0.45
1:B:250:LEU:HB2	1:B:253:ASP:OD1	2.16	0.45
1:A:110:GLU:HB2	1:A:129:ILE:HG12	1.98	0.45
1:A:388:ARG:HD2	1:A:391:TYR:CZ	2.51	0.45
1:A:334:PHE:O	1:A:338:ARG:HG2	2.17	0.45
1:A:94:SER:HB2	4:A:505:1BX:H3	1.98	0.45
1:B:23:TRP:O	1:B:27:LYS:HG3	2.17	0.45
1:A:151:LYS:HE3	1:A:171:ASN:HD22	1.78	0.45
1:A:177:GLY:HA3	1:B:184:ASN:O	2.17	0.45
1:B:66:LYS:HZ2	1:B:67:HIS:CE1	2.35	0.44
1:A:185:GLN:O	1:A:189:ILE:HG13	2.17	0.44
1:A:358:ALA:O	1:A:362:VAL:HG23	2.17	0.44
1:B:315:HIS:NE2	2:B:501:NDP:O2X	2.50	0.44
1:A:185:GLN:O	1:A:188:SER:HB3	2.18	0.43

*Continued on next page...*

*Continued from previous page...*

Atom-1	Atom-2	Interatomic distance (Å)	Clash overlap (Å)
1:B:174:GLU:H	1:B:174:GLU:CD	2.21	0.43
1:B:25:LEU:HA	1:B:28:GLU:HG2	1.99	0.43
1:B:297:CYS:SG	1:B:302:THR:HB	2.58	0.43
1:A:343:ARG:NE	1:A:347:ASP:OD2	2.45	0.43
1:B:249:ARG:O	1:B:250:LEU:HD23	2.18	0.43
1:A:313:THR:OG1	2:A:501:NDP:H51N	2.19	0.43
1:A:66:LYS:HZ2	1:A:67:HIS:CE1	2.36	0.43
1:A:129:ILE:HD13	1:A:199:MET:HE3	2.00	0.43
1:A:49:ARG:NH1	1:A:95:PRO:HD3	2.34	0.43
1:A:43:ASP:HB3	1:A:48:ASN:HD22	1.83	0.43
1:A:85:GLU:OE2	1:A:317:ARG:NH2	2.52	0.43
1:B:248:HIS:CG	1:B:249:ARG:N	2.87	0.42
1:B:309:HIS:CE1	1:B:331:ALA:HB3	2.54	0.42
1:B:156:TYR:CE1	1:B:158:PRO:HG3	2.54	0.42
1:A:211:THR:HB	1:A:220:ASP:HB3	2.01	0.42
1:A:201:LEU:HA	1:A:201:LEU:HD23	1.82	0.42
1:A:19:THR:O	1:A:23:TRP:HB2	2.20	0.42
1:B:52:THR:OG1	1:B:56:VAL:HG22	2.19	0.42
1:A:172:PHE:HB3	1:A:175:GLY:O	2.20	0.42
1:B:5:ILE:HD12	1:B:35:VAL:HG22	2.02	0.42
1:A:407:ILE:HG22	1:A:411:GLN:NE2	2.35	0.42
1:A:156:TYR:CE2	1:B:146:VAL:HG23	2.55	0.41
1:B:174:GLU:HB2	1:B:175:GLY:H	1.74	0.41
1:A:299:ASP:OD1	1:A:300:GLY:N	2.54	0.41
1:A:312:VAL:HG13	2:A:501:NDP:H3B	2.02	0.41
1:B:108:PHE:O	1:B:293:SER:HA	2.19	0.41
1:A:169:VAL:O	1:A:170:HIS:HB2	2.20	0.41
1:B:397:PHE:CE2	1:B:401:LEU:HD11	2.56	0.41
1:A:405:LEU:O	1:A:409:LEU:HB2	2.21	0.41
1:B:197:PHE:HB3	1:B:235:TYR:CD2	2.55	0.41
1:B:340:LEU:HA	1:B:340:LEU:HD23	1.81	0.41
1:B:94:SER:HA	1:B:95:PRO:HD2	1.79	0.41
1:A:248:HIS:CG	1:A:249:ARG:N	2.89	0.41
1:A:409:LEU:HA	1:A:409:LEU:HD23	1.89	0.40
1:B:160:ASP:O	1:B:162:THR:N	2.54	0.40
1:A:210:SER:OG	1:A:210:SER:O	2.37	0.40
1:A:39:LEU:HA	1:A:39:LEU:HD12	1.88	0.40
1:B:108:PHE:HD1	1:B:129:ILE:HG22	1.86	0.40

There are no symmetry-related clashes.

## 5.3 Torsion angles [i](#)

### 5.3.1 Protein backbone [i](#)

In the following table, the Percentiles column shows the percent Ramachandran outliers of the chain as a percentile score with respect to all X-ray entries followed by that with respect to entries of similar resolution.

The Analysed column shows the number of residues for which the backbone conformation was analysed, and the total number of residues.

Mol	Chain	Analysed	Favoured	Allowed	Outliers	Percentiles	
1	A	357/414 (86%)	328 (92%)	27 (8%)	2 (1%)	28	63
1	B	344/414 (83%)	320 (93%)	21 (6%)	3 (1%)	20	55
All	All	701/828 (85%)	648 (92%)	48 (7%)	5 (1%)	25	60

All (5) Ramachandran outliers are listed below:

Mol	Chain	Res	Type
1	B	54	ASP
1	A	237	SER
1	A	270	LYS
1	B	264	GLY
1	B	174	GLU

### 5.3.2 Protein sidechains [i](#)

In the following table, the Percentiles column shows the percent sidechain outliers of the chain as a percentile score with respect to all X-ray entries followed by that with respect to entries of similar resolution.

The Analysed column shows the number of residues for which the sidechain conformation was analysed, and the total number of residues.

Mol	Chain	Analysed	Rotameric	Outliers	Percentiles	
1	A	314/350 (90%)	303 (96%)	11 (4%)	41	72
1	B	305/350 (87%)	285 (93%)	20 (7%)	19	54
All	All	619/700 (88%)	588 (95%)	31 (5%)	28	64

All (31) residues with a non-rotameric sidechain are listed below:

Mol	Chain	Res	Type
1	A	13	MET

*Continued on next page...*

*Continued from previous page...*

Mol	Chain	Res	Type
1	A	116	ASN
1	A	155	THR
1	A	157	THR
1	A	187	LYS
1	A	238	GLN
1	A	269	CYS
1	A	271	ASN
1	A	293	SER
1	A	303	VAL
1	A	379	CYS
1	B	12	GLU
1	B	13	MET
1	B	56	VAL
1	B	89	LYS
1	B	90	GLN
1	B	106	THR
1	B	146	VAL
1	B	155	THR
1	B	157	THR
1	B	166	THR
1	B	178	VAL
1	B	185	GLN
1	B	249	ARG
1	B	252	ASP
1	B	269	CYS
1	B	288	LEU
1	B	293	SER
1	B	373	THR
1	B	379	CYS
1	B	383	LEU

Some sidechains can be flipped to improve hydrogen bonding and reduce clashes. All (1) such sidechains are listed below:

Mol	Chain	Res	Type
1	B	309	HIS

### 5.3.3 RNA ⓘ

There are no RNA molecules in this entry.

## 5.4 Non-standard residues in protein, DNA, RNA chains [i](#)

There are no non-standard protein/DNA/RNA residues in this entry.

## 5.5 Carbohydrates [i](#)

There are no carbohydrates in this entry.

## 5.6 Ligand geometry [i](#)

7 ligands are modelled in this entry.

In the following table, the Counts columns list the number of bonds (or angles) for which Mogul statistics could be retrieved, the number of bonds (or angles) that are observed in the model and the number of bonds (or angles) that are defined in the chemical component dictionary. The Link column lists molecule types, if any, to which the group is linked. The Z score for a bond length (or angle) is the number of standard deviations the observed value is removed from the expected value. A bond length (or angle) with  $|Z| > 2$  is considered an outlier worth inspection. RMSZ is the root-mean-square of all Z scores of the bond lengths (or angles).

Mol	Type	Chain	Res	Link	Bond lengths			Bond angles		
					Counts	RMSZ	$\# Z  > 2$	Counts	RMSZ	$\# Z  > 2$
2	NDP	A	501	-	43,52,52	1.73	10 (23%)	49,80,80	1.71	9 (18%)
3	SO4	A	502	-	4,4,4	0.21	0	6,6,6	0.14	0
3	SO4	A	503	-	4,4,4	0.21	0	6,6,6	0.13	0
3	SO4	A	504	-	4,4,4	0.20	0	6,6,6	0.42	0
4	1BX	A	505	-	16,18,18	1.94	2 (12%)	18,25,25	1.17	2 (11%)
2	NDP	B	501	-	43,52,52	1.75	12 (27%)	49,80,80	2.03	11 (22%)
3	SO4	B	502	-	4,4,4	0.23	0	6,6,6	0.21	0

In the following table, the Chirals column lists the number of chiral outliers, the number of chiral centers analysed, the number of these observed in the model and the number defined in the chemical component dictionary. Similar counts are reported in the Torsion and Rings columns. '-' means no outliers of that kind were identified.

Mol	Type	Chain	Res	Link	Chirals	Torsions	Rings
2	NDP	A	501	-	-	0/30/77/77	0/5/5/5
3	SO4	A	502	-	-	0/0/0/0	0/0/0/0
3	SO4	A	503	-	-	0/0/0/0	0/0/0/0
3	SO4	A	504	-	-	0/0/0/0	0/0/0/0
4	1BX	A	505	-	-	0/4/4/4	0/2/2/2
2	NDP	B	501	-	-	0/30/77/77	0/5/5/5
3	SO4	B	502	-	-	0/0/0/0	0/0/0/0

All (24) bond length outliers are listed below:

Mol	Chain	Res	Type	Atoms	Z	Observed(Å)	Ideal(Å)
2	A	501	NDP	C3B-C4B	-2.96	1.45	1.53
2	A	501	NDP	C2D-C3D	-2.41	1.47	1.53
2	B	501	NDP	C3B-C4B	-2.41	1.46	1.53
2	A	501	NDP	C3B-C2B	-2.40	1.47	1.53
2	B	501	NDP	C3B-C2B	-2.28	1.47	1.53
2	B	501	NDP	C2D-C3D	-2.08	1.47	1.53
2	B	501	NDP	C2N-C3N	2.11	1.40	1.34
2	B	501	NDP	O4D-C4D	2.41	1.50	1.45
2	A	501	NDP	C6N-C5N	2.62	1.38	1.33
2	A	501	NDP	O4D-C1D	2.72	1.48	1.42
2	B	501	NDP	O4D-C1D	2.83	1.48	1.42
2	A	501	NDP	C6A-N6A	3.01	1.46	1.34
2	B	501	NDP	C6A-N6A	3.21	1.47	1.34
2	A	501	NDP	C5A-C4A	3.30	1.47	1.40
2	B	501	NDP	C6N-C5N	3.40	1.39	1.33
2	A	501	NDP	O4B-C1B	3.40	1.46	1.41
2	B	501	NDP	O4B-C1B	3.43	1.46	1.41
2	B	501	NDP	C5A-C4A	3.49	1.48	1.40
2	A	501	NDP	C4N-C5N	3.55	1.56	1.49
2	B	501	NDP	C7N-N7N	3.71	1.43	1.33
2	B	501	NDP	C4N-C5N	3.91	1.57	1.49
2	A	501	NDP	C7N-N7N	3.95	1.44	1.33
4	A	505	1BX	C02-N	4.18	1.44	1.36
4	A	505	1BX	O01-C03	5.77	1.38	1.24

All (22) bond angle outliers are listed below:

Mol	Chain	Res	Type	Atoms	Z	Observed(°)	Ideal(°)
2	B	501	NDP	N3A-C2A-N1A	-9.06	120.96	128.86
2	A	501	NDP	N3A-C2A-N1A	-7.16	122.62	128.86
2	A	501	NDP	C4B-O4B-C1B	-3.68	105.86	109.77
2	B	501	NDP	C4B-O4B-C1B	-3.57	105.97	109.77
2	B	501	NDP	C1B-N9A-C4A	-3.33	120.89	126.64
2	A	501	NDP	C4D-O4D-C1D	-3.24	102.23	109.47
2	B	501	NDP	C4D-O4D-C1D	-3.02	102.74	109.47
2	A	501	NDP	C4A-C5A-N7A	-2.43	107.06	109.41
2	B	501	NDP	C4A-C5A-N7A	-2.33	107.16	109.41
2	A	501	NDP	C1B-N9A-C4A	-2.32	122.63	126.64
2	B	501	NDP	O2N-PN-O1N	-2.27	100.53	112.28
2	B	501	NDP	O2A-PA-O1A	-2.13	101.23	112.28
2	A	501	NDP	C5B-C4B-C3B	-2.13	107.17	115.29
2	A	501	NDP	O3X-P2B-O1X	-2.06	102.46	110.50

*Continued on next page...*



*Continued from previous page...*

Mol	Chain	Res	Type	Atoms	Z	Observed(°)	Ideal(°)
4	A	505	1BX	C06-C05-C01	-2.01	117.98	120.94
2	B	501	NDP	O2X-P2B-O2B	2.01	115.15	106.00
2	A	501	NDP	C2A-N1A-C6A	2.19	122.60	118.77
2	A	501	NDP	O4D-C1D-N1N	2.73	113.57	108.07
2	B	501	NDP	C3D-C2D-C1D	2.84	106.88	101.43
4	A	505	1BX	C04-C05-C01	2.90	121.67	118.09
2	B	501	NDP	O4D-C1D-N1N	2.95	114.01	108.07
2	B	501	NDP	C2A-N1A-C6A	3.59	125.05	118.77

There are no chirality outliers.

There are no torsion outliers.

There are no ring outliers.

5 monomers are involved in 15 short contacts:

Mol	Chain	Res	Type	Clashes	Symm-Clashes
2	A	501	NDP	8	0
3	A	502	SO4	1	0
3	A	503	SO4	1	0
4	A	505	1BX	5	0
2	B	501	NDP	3	0

## 5.7 Other polymers [i](#)

There are no such residues in this entry.

## 5.8 Polymer linkage issues [i](#)

There are no chain breaks in this entry.

## 6 Fit of model and data [i](#)

### 6.1 Protein, DNA and RNA chains [i](#)

In the following table, the column labelled ‘#RSRZ> 2’ contains the number (and percentage) of RSRZ outliers, followed by percent RSRZ outliers for the chain as percentile scores relative to all X-ray entries and entries of similar resolution. The OWAB column contains the minimum, median, 95<sup>th</sup> percentile and maximum values of the occupancy-weighted average B-factor per residue. The column labelled ‘Q< 0.9’ lists the number of (and percentage) of residues with an average occupancy less than 0.9.

Mol	Chain	Analysed	<RSRZ>	#RSRZ>2	OWAB(Å <sup>2</sup> )	Q<0.9
1	A	367/414 (88%)	-0.11	3 (0%) 86 85	1, 11, 40, 67	0
1	B	358/414 (86%)	-0.09	3 (0%) 86 85	1, 10, 40, 57	0
All	All	725/828 (87%)	-0.10	6 (0%) 86 85	1, 11, 40, 67	0

All (6) RSRZ outliers are listed below:

Mol	Chain	Res	Type	RSRZ
1	A	240	GLU	3.0
1	B	234	GLN	2.9
1	B	243	LYS	2.7
1	A	241	ALA	2.3
1	B	246	TYR	2.2
1	A	233	LYS	2.1

### 6.2 Non-standard residues in protein, DNA, RNA chains [i](#)

There are no non-standard protein/DNA/RNA residues in this entry.

### 6.3 Carbohydrates [i](#)

There are no carbohydrates in this entry.

### 6.4 Ligands [i](#)

In the following table, the Atoms column lists the number of modelled atoms in the group and the number defined in the chemical component dictionary. LLDF column lists the quality of electron density of the group with respect to its neighbouring residues in protein, DNA or RNA chains. The B-factors column lists the minimum, median, 95<sup>th</sup> percentile and maximum values of B factors

of atoms in the group. The column labelled 'Q < 0.9' lists the number of atoms with occupancy less than 0.9.

Mol	Type	Chain	Res	Atoms	RSCC	RSR	LLDF	B-factors( $\text{\AA}^2$ )	Q<0.9
4	1BX	A	505	17/17	0.85	0.26	3.00	20,38,65,66	0
2	NDP	A	501	48/48	0.95	0.18	-0.11	5,18,33,42	0
2	NDP	B	501	48/48	0.95	0.17	-0.52	3,14,32,45	0
3	SO4	B	502	5/5	0.91	0.17	-1.05	17,23,52,70	0
3	SO4	A	504	5/5	0.94	0.15	-1.79	18,19,42,50	0
3	SO4	A	502	5/5	0.94	0.13	-	40,44,60,91	0
3	SO4	A	503	5/5	0.94	0.12	-	26,32,52,68	0

## 6.5 Other polymers [i](#)

There are no such residues in this entry.