



# Full wwPDB X-ray Structure Validation Report ⓘ

Oct 9, 2017 – 11:55 PM EDT

PDB ID : 2I4T  
Title : Crystal structure of Purine Nucleoside Phosphorylase from *Trichomonas vaginalis* with Imm-A  
Authors : Rinaldo-Matthis, A.; Schramm, V.L.; Almo, S.C.  
Deposited on : unknown  
Resolution : 2.74 Å(reported)

This is a Full wwPDB X-ray Structure Validation Report for a publicly released PDB entry.

We welcome your comments at [validation@mail.wwpdb.org](mailto:validation@mail.wwpdb.org)

A user guide is available at

<http://wwpdb.org/validation/2016/XrayValidationReportHelp>

with specific help available everywhere you see the ⓘ symbol.

---

The following versions of software and data (see [references ⓘ](#)) were used in the production of this report:

MolProbity : 4.02b-467  
Mogul : 1.7.2 (RC1), CSD as538be (2017)  
Xtriage (Phenix) : 1.9-1692  
EDS : rb-20030345  
Percentile statistics : 20161228.v01 (using entries in the PDB archive December 28th 2016)  
Refmac : 5.8.0135  
CCP4 : 6.5.0  
Ideal geometry (proteins) : Engh & Huber (2001)  
Ideal geometry (DNA, RNA) : Parkinson et al. (1996)  
Validation Pipeline (wwPDB-VP) : rb-20030345

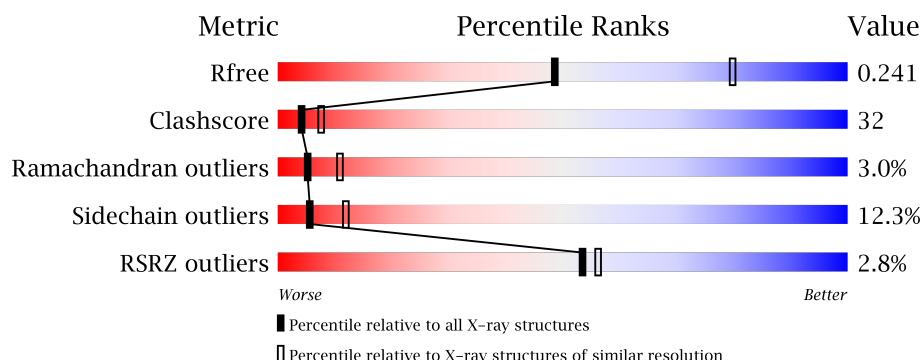
# 1 Overall quality at a glance

The following experimental techniques were used to determine the structure:

## *X-RAY DIFFRACTION*

The reported resolution of this entry is 2.74 Å.

Percentile scores (ranging between 0-100) for global validation metrics of the entry are shown in the following graphic. The table shows the number of entries on which the scores are based.



Metric	Whole archive (#Entries)	Similar resolution (#Entries, resolution range(Å))
$R_{free}$	100719	3342 (2.78-2.70)
Clashscore	112137	3731 (2.78-2.70)
Ramachandran outliers	110173	3670 (2.78-2.70)
Sidechain outliers	110143	3671 (2.78-2.70)
RSRZ outliers	101464	3362 (2.78-2.70)

The table below summarises the geometric issues observed across the polymeric chains and their fit to the electron density. The red, orange, yellow and green segments on the lower bar indicate the fraction of residues that contain outliers for  $\geq 3$ , 2, 1 and 0 types of geometric quality criteria. A grey segment represents the fraction of residues that are not modelled. The numeric value for each fraction is indicated below the corresponding segment, with a dot representing fractions  $\leq 5\%$ . The upper red bar (where present) indicates the fraction of residues that have poor fit to the electron density. The numeric value is given above the bar.

Mol	Chain	Length	Quality of chain
1	A	236	<div> <div>0.1%</div> <div>69%</div> <div>23%</div> <div>5%</div> <div>•</div> </div>
1	B	236	<div> <div>2%</div> <div>60%</div> <div>31%</div> <div>8%</div> <div>•</div> </div>
1	C	236	<div> <div>5%</div> <div>44%</div> <div>39%</div> <div>11%</div> <div>• 5%</div> </div>

The following table lists non-polymeric compounds, carbohydrate monomers and non-standard residues in protein, DNA, RNA chains that are outliers for geometric or electron-density-fit criteria:

Mol	Type	Chain	Res	Chirality	Geometry	Clashes	Electron density
2	PO4	A	242	-	-	-	X
2	PO4	C	241	-	-	-	X
3	UA2	A	243	-	-	-	X

## 2 Entry composition [i](#)

There are 4 unique types of molecules in this entry. The entry contains 5440 atoms, of which 0 are hydrogens and 0 are deuteriums.

In the tables below, the ZeroOcc column contains the number of atoms modelled with zero occupancy, the AltConf column contains the number of residues with at least one atom in alternate conformation and the Trace column contains the number of residues modelled with at most 2 atoms.

- Molecule 1 is a protein called *Trichomonas vaginalis* purine nucleoside phosphorylase.

Mol	Chain	Residues	Atoms					ZeroOcc	AltConf	Trace
1	A	230	Total	C	N	O	S	0	0	0
			1769	1124	302	328	15			
1	B	235	Total	C	N	O	S	0	0	0
			1805	1144	305	341	15			
1	C	224	Total	C	N	O	S	0	0	0
			1709	1090	285	319	15			

- Molecule 2 is PHOSPHATE ION (three-letter code: PO4) (formula: O<sub>4</sub>P).



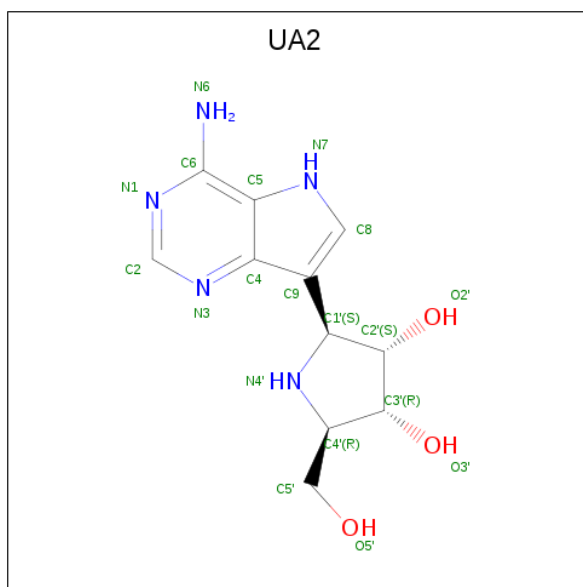
Mol	Chain	Residues	Atoms			ZeroOcc	AltConf
2	A	1	Total	O	P	0	0
			5	4	1		
2	A	1	Total	O	P	0	0
			5	4	1		
2	B	1	Total	O	P	0	0
			5	4	1		

*Continued on next page...*

Continued from previous page...

Mol	Chain	Residues	Atoms			ZeroOcc	AltConf
2	C	1	Total	O	P	0	0
			5	4	1		
2	C	1	Total	O	P	0	0
			5	4	1		

- Molecule 3 is 3,4-PYRROLIDINEDIOL,2-(4-AMINO-5H-PYRROLO[3,2-D]PYRIMIDIN-7-YL)-5-(HYDROXYMETHYL)-2S,3S,4R,5R (three-letter code: UA2) (formula:  $C_{11}H_{15}N_5O_3$ ).



Mol	Chain	Residues	Atoms				ZeroOcc	AltConf
3	A	1	Total	C	N	O	0	0
			19	11	5	3		
3	B	1	Total	C	N	O	0	0
			19	11	5	3		
3	C	1	Total	C	N	O	0	0
			19	11	5	3		

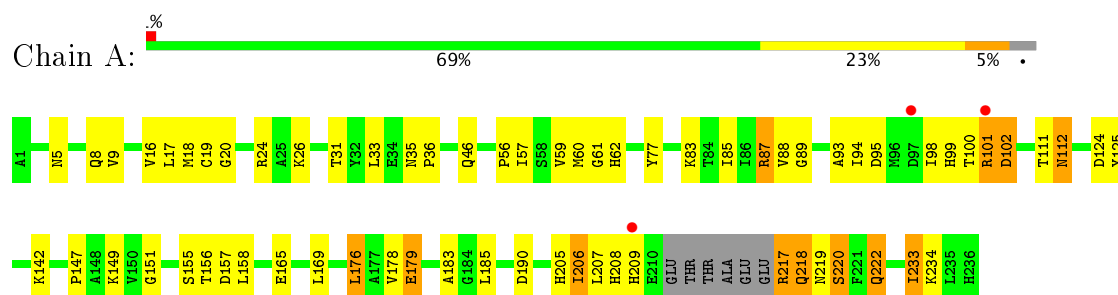
- Molecule 4 is water.

Mol	Chain	Residues	Atoms		ZeroOcc	AltConf
4	A	25	Total	O	0	0
			25	25		
4	B	31	Total	O	0	0
			31	31		
4	C	19	Total	O	0	0
			19	19		

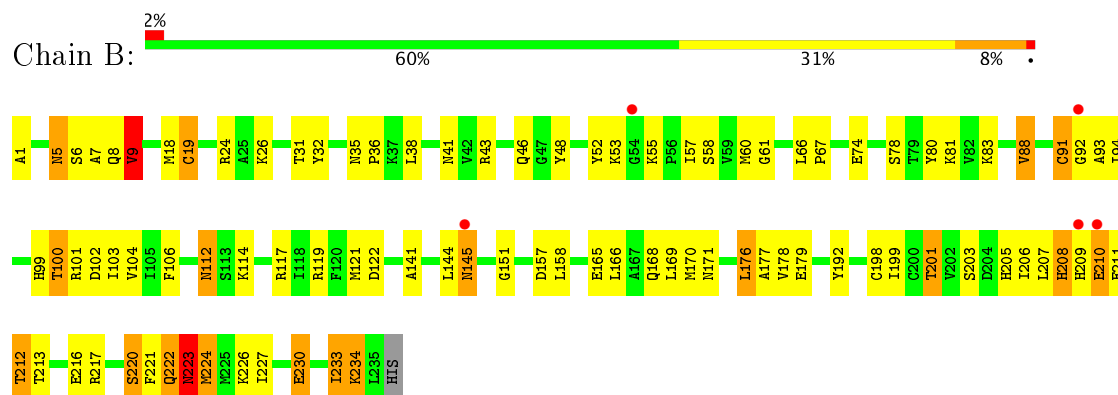
### 3 Residue-property plots

These plots are drawn for all protein, RNA and DNA chains in the entry. The first graphic for a chain summarises the proportions of the various outlier classes displayed in the second graphic. The second graphic shows the sequence view annotated by issues in geometry and electron density. Residues are color-coded according to the number of geometric quality criteria for which they contain at least one outlier: green = 0, yellow = 1, orange = 2 and red = 3 or more. A red dot above a residue indicates a poor fit to the electron density ( $RSRZ > 2$ ). Stretches of 2 or more consecutive residues without any outlier are shown as a green connector. Residues present in the sample, but not in the model, are shown in grey.

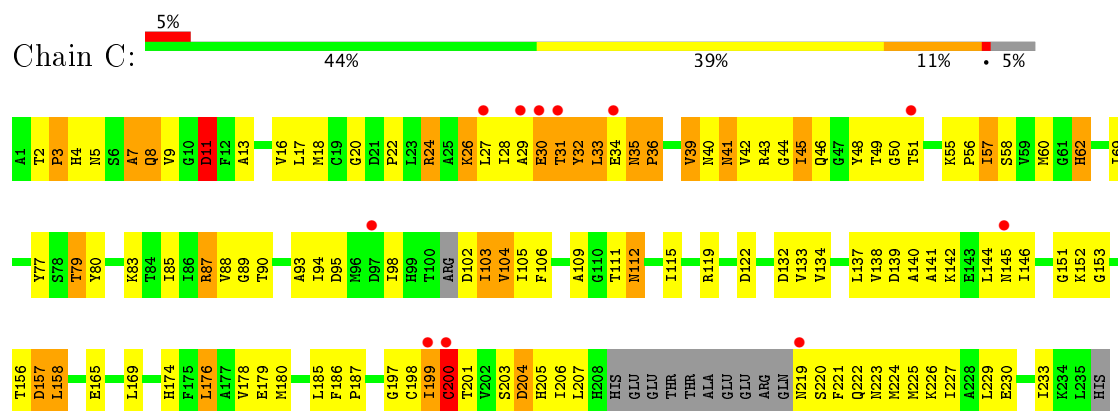
- Molecule 1: *Trichomonas vaginalis* purine nucleoside phosphorylase



- Molecule 1: *Trichomonas vaginalis* purine nucleoside phosphorylase



- Molecule 1: *Trichomonas vaginalis* purine nucleoside phosphorylase



## 4 Data and refinement statistics

Property	Value	Source
Space group	P 62	Depositor
Cell constants a, b, c, $\alpha$ , $\beta$ , $\gamma$	155.76Å 155.76Å 102.61Å 90.00° 90.00° 120.00°	Depositor
Resolution (Å)	7.99 – 2.74 7.99 – 2.74	Depositor EDS
% Data completeness (in resolution range)	99.1 (7.99-2.74) 99.1 (7.99-2.74)	Depositor EDS
$R_{merge}$	0.09	Depositor
$R_{sym}$	(Not available)	Depositor
$\langle I/\sigma(I) \rangle$ <sup>1</sup>	3.01 (at 2.74Å)	Xtriage
Refinement program	REFMAC	Depositor
R, $R_{free}$	0.170 , 0.225 0.192 , 0.241	Depositor DCC
$R_{free}$ test set	1781 reflections (5.02%)	DCC
Wilson B-factor (Å <sup>2</sup> )	63.9	Xtriage
Anisotropy	0.002	Xtriage
Bulk solvent $k_{sol}$ (e/Å <sup>3</sup> ), $B_{sol}$ (Å <sup>2</sup> )	0.43 , 67.3	EDS
L-test for twinning <sup>2</sup>	$\langle  L  \rangle = 0.50$ , $\langle L^2 \rangle = 0.34$	Xtriage
Estimated twinning fraction	0.026 for h,-h-k,-l	Xtriage
$F_o, F_c$ correlation	0.94	EDS
Total number of atoms	5440	wwPDB-VP
Average B, all atoms (Å <sup>2</sup> )	60.0	wwPDB-VP

Xtriage's analysis on translational NCS is as follows: *The largest off-origin peak in the Patterson function is 3.33% of the height of the origin peak. No significant pseudotranslation is detected.*

<sup>1</sup> Intensities estimated from amplitudes.

<sup>2</sup> Theoretical values of  $\langle |L| \rangle$ ,  $\langle L^2 \rangle$  for acentric reflections are 0.5, 0.333 respectively for untwinned datasets, and 0.375, 0.2 for perfectly twinned datasets.

## 5 Model quality

### 5.1 Standard geometry

Bond lengths and bond angles in the following residue types are not validated in this section: PO4, UA2

The Z score for a bond length (or angle) is the number of standard deviations the observed value is removed from the expected value. A bond length (or angle) with  $|Z| > 5$  is considered an outlier worth inspection. RMSZ is the root-mean-square of all Z scores of the bond lengths (or angles).

Mol	Chain	Bond lengths		Bond angles	
		RMSZ	$\# Z  > 5$	RMSZ	$\# Z  > 5$
1	A	0.92	0/1804	0.98	0/2440
1	B	0.95	0/1840	1.00	2/2491 (0.1%)
1	C	0.99	3/1741 (0.2%)	1.05	11/2355 (0.5%)
All	All	0.95	3/5385 (0.1%)	1.01	13/7286 (0.2%)

All (3) bond length outliers are listed below:

Mol	Chain	Res	Type	Atoms	Z	Observed(Å)	Ideal(Å)
1	C	200	CYS	CB-SG	-7.16	1.70	1.82
1	C	103	ILE	C-N	-6.92	1.18	1.34
1	C	104	VAL	C-N	-5.71	1.21	1.34

All (13) bond angle outliers are listed below:

Mol	Chain	Res	Type	Atoms	Z	Observed(°)	Ideal(°)
1	C	104	VAL	O-C-N	-8.16	109.65	122.70
1	B	117	ARG	NE-CZ-NH1	-7.79	116.41	120.30
1	C	103	ILE	O-C-N	-7.57	110.59	122.70
1	C	200	CYS	N-CA-CB	-7.17	97.69	110.60
1	C	102	ASP	CB-CG-OD1	-6.36	112.58	118.30
1	C	104	VAL	C-N-CA	5.82	136.25	121.70
1	C	104	VAL	CA-C-N	5.64	129.61	117.20
1	C	11	ASP	CB-CG-OD2	5.42	123.17	118.30
1	B	43	ARG	NE-CZ-NH1	-5.37	117.61	120.30
1	C	122	ASP	CB-CG-OD2	5.30	123.07	118.30
1	C	158	LEU	CA-CB-CG	5.24	127.34	115.30
1	C	87	ARG	NE-CZ-NH1	-5.05	117.78	120.30
1	C	200	CYS	CA-CB-SG	5.02	123.03	114.00

There are no chirality outliers.



There are no planarity outliers.

## 5.2 Too-close contacts

In the following table, the Non-H and H(model) columns list the number of non-hydrogen atoms and hydrogen atoms in the chain respectively. The H(added) column lists the number of hydrogen atoms added and optimized by MolProbity. The Clashes column lists the number of clashes within the asymmetric unit, whereas Symm-Clashes lists symmetry related clashes.

Mol	Chain	Non-H	H(model)	H(added)	Clashes	Symm-Clashes
1	A	1769	0	1769	74	0
1	B	1805	0	1800	100	0
1	C	1709	0	1712	176	0
2	A	10	0	0	1	0
2	B	5	0	0	0	0
2	C	10	0	0	1	0
3	A	19	0	15	0	0
3	B	19	0	15	0	0
3	C	19	0	15	0	0
4	A	25	0	0	2	0
4	B	31	0	0	1	0
4	C	19	0	0	0	0
All	All	5440	0	5326	347	0

The all-atom clashscore is defined as the number of clashes found per 1000 atoms (including hydrogen atoms). The all-atom clashscore for this structure is 32.

All (347) close contacts within the same asymmetric unit are listed below, sorted by their clash magnitude.

Atom-1	Atom-2	Interatomic distance (Å)	Clash overlap (Å)
1:C:199:ILE:HB	1:C:200:CYS:SG	1.46	1.54
1:C:137:LEU:HD22	1:C:199:ILE:CD1	1.36	1.50
1:C:199:ILE:CA	1:C:200:CYS:HB3	1.18	1.48
1:A:101:ARG:HD2	1:A:220:SER:CB	1.46	1.43
1:B:209:HIS:HA	1:B:210:GLU:CB	1.54	1.34
1:B:209:HIS:CA	1:B:210:GLU:HB2	1.60	1.31
1:C:199:ILE:HA	1:C:200:CYS:CB	1.60	1.28
1:C:137:LEU:CD2	1:C:199:ILE:HD11	1.64	1.26
1:C:199:ILE:CA	1:C:200:CYS:CB	2.11	1.26
1:C:104:VAL:O	1:C:200:CYS:HB2	1.34	1.24
1:C:198:CYS:O	1:C:199:ILE:HG23	1.11	1.22
1:C:105:ILE:HA	1:C:199:ILE:HG22	1.25	1.18

*Continued on next page...*

*Continued from previous page...*

Atom-1	Atom-2	Interatomic distance (Å)	Clash overlap (Å)
1:A:101:ARG:CD	1:A:220:SER:CB	2.22	1.17
1:C:198:CYS:O	1:C:199:ILE:CG2	1.91	1.17
1:C:199:ILE:CB	1:C:200:CYS:HB3	1.75	1.15
1:C:26:LYS:HG3	1:C:46:GLN:NE2	1.62	1.15
1:B:222:GLN:O	1:B:223:ASN:HB2	1.40	1.11
1:C:29:ALA:HB3	1:C:30:GLU:CB	1.81	1.10
1:C:199:ILE:CB	1:C:200:CYS:SG	2.39	1.10
1:C:29:ALA:HB3	1:C:30:GLU:CG	1.81	1.08
1:C:137:LEU:HD22	1:C:199:ILE:HD13	1.34	1.08
1:C:29:ALA:HB3	1:C:30:GLU:HB2	1.33	1.08
1:C:137:LEU:CD2	1:C:199:ILE:CD1	2.24	1.07
1:C:29:ALA:CB	1:C:30:GLU:HB2	1.84	1.06
1:C:88:VAL:HB	1:C:224:MET:CE	1.86	1.04
1:B:88:VAL:HG23	1:B:224:MET:HG3	1.41	1.03
1:C:24:ARG:HG3	1:C:24:ARG:HH21	1.24	1.03
1:B:209:HIS:HB2	1:B:210:GLU:O	1.59	1.02
1:A:94:ILE:HD11	1:A:178:VAL:HG23	1.39	1.00
1:C:94:ILE:HD11	1:C:178:VAL:HG23	1.41	1.00
1:C:88:VAL:HB	1:C:224:MET:HE3	1.01	1.00
1:A:101:ARG:HD2	1:A:220:SER:HB2	1.02	0.99
1:C:29:ALA:N	1:C:30:GLU:HB2	1.78	0.99
1:C:29:ALA:CA	1:C:30:GLU:HB2	1.93	0.98
1:C:28:ILE:HG23	1:C:32:TYR:CD1	1.96	0.98
1:C:137:LEU:HD22	1:C:199:ILE:HD11	1.00	0.97
1:C:29:ALA:H	1:C:30:GLU:HB2	1.29	0.97
1:A:35:ASN:N	1:A:36:PRO:HD3	1.79	0.97
1:C:95:ASP:HB3	1:C:98:ILE:HG13	1.48	0.96
1:B:112:ASN:HD21	1:B:157:ASP:H	1.11	0.95
1:B:93:ALA:HB3	1:B:205:HIS:HA	1.45	0.95
1:C:105:ILE:HG12	1:C:199:ILE:HG21	1.49	0.94
1:C:199:ILE:CB	1:C:200:CYS:CB	2.41	0.94
1:C:29:ALA:HB3	1:C:30:GLU:HG3	1.45	0.94
1:C:112:ASN:HD21	1:C:157:ASP:H	1.15	0.93
1:A:101:ARG:CD	1:A:220:SER:HB2	1.93	0.93
1:C:33:LEU:HD13	1:C:50:GLY:HA3	1.50	0.92
1:C:199:ILE:HB	1:C:200:CYS:CB	2.00	0.92
1:C:24:ARG:CG	1:C:24:ARG:HH21	1.82	0.92
1:C:29:ALA:O	1:C:33:LEU:HB2	1.69	0.92
1:C:88:VAL:CB	1:C:224:MET:HE3	1.97	0.90
1:A:94:ILE:HG12	1:A:206:ILE:HD11	1.54	0.90
1:C:26:LYS:HG3	1:C:46:GLN:HE21	1.32	0.90

*Continued on next page...*

*Continued from previous page...*

Atom-1	Atom-2	Interatomic distance (Å)	Clash overlap (Å)
1:C:42:VAL:HG12	1:C:43:ARG:HG3	1.51	0.89
1:C:7:ALA:HB2	1:C:39:VAL:O	1.74	0.88
1:B:201:THR:HG22	1:B:224:MET:SD	2.11	0.88
1:C:55:LYS:HG3	1:C:233:ILE:HD12	1.56	0.87
1:B:1:ALA:HB3	1:B:80:TYR:OH	1.74	0.87
1:C:26:LYS:CG	1:C:46:GLN:NE2	2.38	0.87
1:B:222:GLN:O	1:B:223:ASN:CB	2.22	0.87
1:C:16:VAL:HG12	1:C:17:LEU:O	1.75	0.86
1:C:199:ILE:HB	1:C:200:CYS:HG	1.39	0.86
1:A:101:ARG:CD	1:A:220:SER:OG	2.24	0.85
1:C:88:VAL:HA	1:C:199:ILE:O	1.75	0.85
1:C:105:ILE:HA	1:C:199:ILE:CG2	2.06	0.85
1:B:201:THR:CG2	1:B:224:MET:SD	2.65	0.85
1:C:5:ASN:ND2	1:C:80:TYR:CZ	2.45	0.85
1:C:35:ASN:N	1:C:36:PRO:CD	2.39	0.84
1:B:168:GLN:HE22	1:B:171:ASN:HD22	1.24	0.84
1:C:104:VAL:O	1:C:200:CYS:CB	2.23	0.84
1:C:28:ILE:HG23	1:C:32:TYR:HD1	1.38	0.84
1:B:26:LYS:HD2	1:B:46:GLN:NE2	1.93	0.83
1:B:88:VAL:HG23	1:B:224:MET:CG	2.07	0.83
1:B:208:HIS:HE1	1:B:210:GLU:OE2	1.60	0.83
1:C:26:LYS:O	1:C:30:GLU:CB	2.27	0.83
1:C:198:CYS:C	1:C:199:ILE:HG23	1.99	0.82
1:C:33:LEU:CD1	1:C:50:GLY:HA3	2.09	0.82
1:A:94:ILE:HG13	1:A:206:ILE:HD13	1.59	0.82
1:C:77:TYR:CZ	1:C:85:ILE:HD12	2.14	0.82
1:A:94:ILE:CG1	1:A:206:ILE:HD11	2.09	0.81
1:C:94:ILE:CD1	1:C:178:VAL:HG23	2.10	0.81
1:A:94:ILE:HG13	1:A:206:ILE:CD1	2.10	0.80
1:A:112:ASN:HD21	1:A:157:ASP:H	1.26	0.80
1:C:28:ILE:HD11	1:C:221:PHE:HZ	1.46	0.80
1:C:26:LYS:CG	1:C:46:GLN:HE21	1.94	0.80
1:A:151:GLY:HA3	1:A:176:LEU:HD22	1.63	0.80
1:B:203:SER:O	1:B:212:THR:HB	1.83	0.79
1:A:101:ARG:HD2	1:A:220:SER:HB3	1.59	0.78
1:C:94:ILE:HD11	1:C:178:VAL:CG2	2.12	0.78
1:C:33:LEU:HD21	1:C:57:ILE:HG21	1.65	0.78
1:A:217:ARG:HG2	1:A:217:ARG:HH11	1.47	0.78
1:B:141:ALA:HB2	1:B:227:ILE:HD13	1.65	0.78
1:C:199:ILE:HA	1:C:200:CYS:HB3	0.77	0.77
1:C:24:ARG:NH2	1:C:24:ARG:HG3	1.98	0.77

*Continued on next page...*

*Continued from previous page...*

Atom-1	Atom-2	Interatomic distance (Å)	Clash overlap (Å)
1:A:101:ARG:HD3	1:A:220:SER:OG	1.86	0.76
1:A:26:LYS:HB2	1:A:46:GLN:HE21	1.51	0.76
1:A:94:ILE:CG1	1:A:206:ILE:CD1	2.64	0.76
1:B:91:CYS:HB2	1:B:177:ALA:HB1	1.68	0.76
1:C:28:ILE:HD11	1:C:221:PHE:CZ	2.21	0.75
1:C:26:LYS:HD3	1:C:46:GLN:NE2	2.02	0.75
1:A:101:ARG:HH11	1:A:220:SER:HB3	1.52	0.75
1:C:137:LEU:HD21	1:C:199:ILE:HD11	1.68	0.74
1:C:26:LYS:O	1:C:30:GLU:HB2	1.86	0.74
1:C:89:GLY:O	1:C:201:THR:HG22	1.88	0.73
1:C:29:ALA:H	1:C:30:GLU:CB	2.00	0.73
1:A:151:GLY:HA3	1:A:176:LEU:CD2	2.18	0.73
1:B:93:ALA:HB1	1:B:205:HIS:CD2	2.24	0.72
1:B:141:ALA:CB	1:B:227:ILE:HD13	2.18	0.72
1:B:31:THR:HG22	1:B:31:THR:O	1.89	0.72
1:B:88:VAL:CG2	1:B:224:MET:HG3	2.18	0.72
1:C:55:LYS:HG3	1:C:233:ILE:CD1	2.19	0.71
1:A:33:LEU:HD21	1:A:57:ILE:HG21	1.73	0.71
1:B:208:HIS:CE1	1:B:210:GLU:OE2	2.42	0.70
1:B:205:HIS:O	1:B:209:HIS:HB3	1.92	0.70
1:C:144:LEU:HB2	1:C:146:ILE:HD12	1.74	0.70
1:C:103:ILE:CG2	1:C:200:CYS:SG	2.80	0.69
1:C:57:ILE:HG23	1:C:58:SER:N	2.06	0.69
1:A:217:ARG:O	1:A:218:GLN:C	2.30	0.69
1:C:112:ASN:HD21	1:C:157:ASP:N	1.88	0.69
1:C:31:THR:HG22	1:C:32:TYR:CE1	2.28	0.69
1:C:103:ILE:HG23	1:C:200:CYS:SG	2.33	0.68
1:C:31:THR:HG22	1:C:31:THR:O	1.93	0.68
1:A:33:LEU:CD2	1:A:57:ILE:HG21	2.24	0.68
1:A:94:ILE:HD11	1:A:178:VAL:CG2	2.19	0.68
1:B:209:HIS:H	1:B:209:HIS:CD2	2.11	0.68
1:C:105:ILE:CG1	1:C:199:ILE:HG21	2.23	0.68
1:C:51:THR:HA	1:C:55:LYS:O	1.94	0.67
1:C:137:LEU:CD2	1:C:199:ILE:HD13	2.11	0.67
1:B:112:ASN:HD21	1:B:157:ASP:N	1.89	0.67
1:A:147:PRO:HA	4:A:260:HOH:O	1.94	0.67
1:B:55:LYS:HG3	1:B:233:ILE:HD12	1.77	0.67
1:C:134:VAL:O	1:C:138:VAL:HG23	1.95	0.67
1:C:35:ASN:N	1:C:36:PRO:HD3	2.09	0.67
1:A:35:ASN:H	1:A:36:PRO:HD3	1.58	0.66
1:B:57:ILE:HG22	1:B:58:SER:N	2.09	0.66

*Continued on next page...*

*Continued from previous page...*

Atom-1	Atom-2	Interatomic distance (Å)	Clash overlap (Å)
1:B:205:HIS:HE1	1:B:207:LEU:HB2	1.59	0.66
1:C:203:SER:O	1:C:204:ASP:HB3	1.96	0.65
1:C:33:LEU:HD11	1:C:57:ILE:HG22	1.78	0.65
1:A:112:ASN:HD21	1:A:157:ASP:N	1.93	0.65
1:B:223:ASN:O	1:B:227:ILE:HG13	1.97	0.65
1:B:5:ASN:HD22	1:B:6:SER:N	1.94	0.65
1:C:26:LYS:CD	1:C:46:GLN:NE2	2.59	0.65
1:B:19:CYS:HB3	1:B:88:VAL:O	1.97	0.64
1:A:208:HIS:O	1:A:208:HIS:CD2	2.50	0.64
1:B:206:ILE:HG22	1:B:206:ILE:O	1.97	0.64
1:C:20:GLY:HA3	2:C:238:PO4:O3	1.97	0.64
1:C:28:ILE:CD1	1:C:221:PHE:HZ	2.10	0.64
1:C:35:ASN:N	1:C:36:PRO:HD2	2.13	0.64
1:C:151:GLY:HA3	1:C:176:LEU:HD22	1.81	0.63
1:B:35:ASN:N	1:B:36:PRO:HD3	2.13	0.63
1:B:208:HIS:ND1	1:B:208:HIS:O	2.31	0.63
1:C:5:ASN:ND2	1:C:80:TYR:OH	2.27	0.63
1:C:24:ARG:CB	1:C:24:ARG:HH21	2.11	0.63
1:B:208:HIS:HD1	1:B:210:GLU:HG3	1.62	0.63
1:B:41:ASN:HD22	1:B:46:GLN:H	1.47	0.63
1:B:165:GLU:HB2	4:B:267:HOH:O	1.98	0.62
1:B:144:LEU:O	1:B:145:ASN:CB	2.48	0.62
1:B:26:LYS:CD	1:B:46:GLN:NE2	2.62	0.62
1:C:26:LYS:HD3	1:C:46:GLN:HE22	1.64	0.62
1:B:91:CYS:HB2	1:B:92:GLY:HA3	1.81	0.62
1:B:57:ILE:CG2	1:B:58:SER:N	2.63	0.60
1:C:29:ALA:N	1:C:30:GLU:CB	2.59	0.60
1:B:205:HIS:CE1	1:B:207:LEU:HB2	2.36	0.60
1:A:101:ARG:HD3	1:A:220:SER:CB	2.25	0.59
1:B:209:HIS:HA	1:B:210:GLU:HB2	0.68	0.59
1:C:29:ALA:CA	1:C:30:GLU:CB	2.76	0.59
1:C:26:LYS:O	1:C:30:GLU:HB3	2.01	0.59
1:B:19:CYS:HB2	1:B:24:ARG:NH1	2.18	0.59
1:B:100:THR:HG21	1:B:211:GLU:O	2.03	0.59
1:B:101:ARG:HH22	1:B:216:GLU:CD	2.07	0.59
1:B:213:THR:OG1	1:B:216:GLU:HG2	2.02	0.58
1:C:57:ILE:CG2	1:C:58:SER:N	2.67	0.58
1:A:99:HIS:O	1:A:102:ASP:HB2	2.04	0.58
1:C:13:ALA:HB1	1:C:56:PRO:O	2.03	0.58
1:B:31:THR:CG2	1:B:31:THR:O	2.50	0.58
1:A:217:ARG:NH1	1:A:217:ARG:HG2	2.15	0.57

*Continued on next page...*

*Continued from previous page...*

Atom-1	Atom-2	Interatomic distance (Å)	Clash overlap (Å)
1:C:33:LEU:HD13	1:C:50:GLY:CA	2.30	0.57
1:B:144:LEU:O	1:B:145:ASN:HB2	2.05	0.57
1:B:208:HIS:O	1:B:210:GLU:HG3	2.04	0.57
1:C:35:ASN:H	1:C:36:PRO:HD2	1.69	0.57
1:C:103:ILE:HG23	1:C:200:CYS:O	2.05	0.56
1:C:5:ASN:HB3	1:C:80:TYR:OH	2.05	0.56
1:A:33:LEU:CD2	1:A:57:ILE:CG2	2.82	0.56
1:B:92:GLY:HA3	1:B:178:VAL:O	2.05	0.56
1:A:217:ARG:O	1:A:220:SER:N	2.39	0.56
1:B:168:GLN:NE2	1:B:171:ASN:HD22	2.01	0.55
1:A:94:ILE:CD1	1:A:178:VAL:HG23	2.27	0.55
1:C:31:THR:CG2	1:C:31:THR:O	2.54	0.55
1:A:112:ASN:ND2	1:A:157:ASP:H	2.01	0.55
1:B:209:HIS:HA	1:B:210:GLU:CG	2.33	0.55
1:B:26:LYS:HB2	1:B:46:GLN:HE21	1.71	0.55
1:C:2:THR:O	1:C:4:HIS:N	2.40	0.55
1:B:88:VAL:HG23	1:B:224:MET:SD	2.47	0.54
1:B:88:VAL:HA	1:B:199:ILE:O	2.07	0.54
1:C:79:THR:HG22	1:C:80:TYR:CG	2.42	0.54
1:C:22:PRO:O	1:C:46:GLN:HG3	2.07	0.54
1:B:78:SER:HB2	1:B:192:TYR:CE1	2.42	0.54
1:B:206:ILE:CG2	1:B:206:ILE:O	2.56	0.54
1:C:3:PRO:HB2	1:C:4:HIS:CD2	2.42	0.54
1:A:17:LEU:O	1:A:59:VAL:HA	2.08	0.54
1:C:41:ASN:ND2	1:C:46:GLN:H	2.04	0.54
1:B:26:LYS:HD2	1:B:46:GLN:HE22	1.71	0.53
1:C:33:LEU:HD21	1:C:57:ILE:CG2	2.38	0.53
1:C:28:ILE:CG1	1:C:221:PHE:HZ	2.20	0.53
1:B:208:HIS:C	1:B:208:HIS:HD1	2.12	0.53
1:B:144:LEU:HD21	1:B:230:GLU:HG2	1.91	0.52
1:C:93:ALA:HB3	1:C:205:HIS:CD2	2.43	0.52
1:C:40:ASN:ND2	1:C:45:ILE:HG21	2.24	0.52
1:A:33:LEU:HD21	1:A:57:ILE:CG2	2.38	0.52
1:A:87:ARG:CG	1:A:87:ARG:HH11	2.22	0.52
1:C:225:MET:O	1:C:229:LEU:HD12	2.10	0.52
1:C:48:TYR:O	1:C:58:SER:HA	2.09	0.52
1:A:112:ASN:HD21	1:A:156:THR:HA	1.75	0.51
1:A:77:TYR:CZ	1:A:85:ILE:HD12	2.45	0.51
1:A:24:ARG:NH2	1:A:89:GLY:HA2	2.25	0.51
1:A:112:ASN:ND2	1:A:156:THR:HA	2.25	0.51
1:A:101:ARG:CD	1:A:220:SER:HB3	2.26	0.51

*Continued on next page...*

*Continued from previous page...*

Atom-1	Atom-2	Interatomic distance (Å)	Clash overlap (Å)
1:A:234:LYS:HD3	4:A:259:HOH:O	2.10	0.50
1:C:220:SER:O	1:C:221:PHE:C	2.47	0.50
1:C:18:MET:HA	1:C:60:MET:O	2.11	0.50
1:C:29:ALA:O	1:C:36:PRO:HG3	2.11	0.50
1:B:5:ASN:HD22	1:B:5:ASN:C	2.13	0.50
1:C:186:PHE:N	1:C:187:PRO:CD	2.75	0.50
1:B:26:LYS:CD	1:B:46:GLN:HE21	2.24	0.49
1:C:205:HIS:CE1	1:C:207:LEU:HB2	2.47	0.49
1:A:112:ASN:O	1:B:114:LYS:HE2	2.13	0.49
1:A:33:LEU:HD22	1:A:57:ILE:CG2	2.43	0.49
1:C:140:ALA:O	1:C:141:ALA:C	2.49	0.49
1:C:27:LEU:O	1:C:31:THR:HB	2.13	0.49
1:B:92:GLY:O	1:B:178:VAL:N	2.43	0.49
1:C:230:GLU:O	1:C:233:ILE:HB	2.13	0.49
1:B:209:HIS:CA	1:B:210:GLU:CB	2.39	0.49
1:C:139:ASP:O	1:C:142:LYS:CB	2.62	0.48
1:C:29:ALA:CB	1:C:30:GLU:CB	2.58	0.48
1:C:33:LEU:CD1	1:C:50:GLY:CA	2.87	0.48
1:B:32:TYR:OH	1:B:222:GLN:HB3	2.13	0.48
1:B:201:THR:HG21	1:B:221:PHE:HB3	1.96	0.48
1:C:41:ASN:HD22	1:C:46:GLN:H	1.61	0.47
1:A:31:THR:O	1:A:31:THR:HG22	2.13	0.47
1:C:223:ASN:O	1:C:227:ILE:HG13	2.14	0.47
1:B:209:HIS:CB	1:B:210:GLU:HB2	2.39	0.47
1:B:41:ASN:ND2	1:B:46:GLN:H	2.12	0.47
1:C:24:ARG:HB2	1:C:24:ARG:NH2	2.29	0.47
1:B:91:CYS:HB2	1:B:92:GLY:CA	2.43	0.47
1:C:41:ASN:ND2	1:C:46:GLN:OE1	2.47	0.47
1:A:124:ASP:HB2	1:C:111:THR:HG22	1.97	0.47
1:B:217:ARG:HA	1:B:221:PHE:CE1	2.49	0.47
1:C:79:THR:HG22	1:C:80:TYR:CD1	2.50	0.47
1:B:8:GLN:O	1:B:9:VAL:C	2.53	0.47
1:C:144:LEU:HD21	1:C:230:GLU:HG3	1.95	0.47
1:C:109:ALA:HA	1:C:153:GLY:O	2.15	0.47
1:C:24:ARG:NH2	1:C:24:ARG:CB	2.78	0.47
1:C:49:THR:O	1:C:49:THR:HG23	2.14	0.47
1:B:99:HIS:O	1:B:102:ASP:HB2	2.15	0.46
1:B:19:CYS:CB	1:B:24:ARG:NH1	2.78	0.46
1:C:219:ASN:O	1:C:222:GLN:N	2.47	0.46
1:B:234:LYS:H	1:B:234:LYS:HG2	1.45	0.46
1:A:88:VAL:HG23	1:A:88:VAL:O	2.15	0.46

*Continued on next page...*

*Continued from previous page...*

Atom-1	Atom-2	Interatomic distance (Å)	Clash overlap (Å)
1:A:95:ASP:HB3	1:A:98:ILE:HG13	1.96	0.46
1:B:74:GLU:O	1:B:78:SER:HB3	2.16	0.46
1:C:16:VAL:CG1	1:C:17:LEU:O	2.54	0.46
1:A:35:ASN:N	1:A:36:PRO:CD	2.58	0.46
1:C:203:SER:O	1:C:204:ASP:CB	2.63	0.46
1:A:155:SER:HA	1:A:179:GLU:O	2.16	0.46
1:C:8:GLN:O	1:C:11:ASP:HB2	2.16	0.46
1:C:28:ILE:HG21	1:C:225:MET:CE	2.46	0.46
1:B:91:CYS:CB	1:B:92:GLY:HA3	2.43	0.45
1:C:137:LEU:CG	1:C:199:ILE:HD13	2.46	0.45
1:A:190:ASP:O	1:C:174:HIS:HD2	1.98	0.45
1:B:209:HIS:CB	1:B:210:GLU:O	2.47	0.45
1:B:151:GLY:HA3	1:B:176:LEU:HD22	1.98	0.45
1:C:156:THR:HG22	1:C:180:MET:HG2	1.99	0.45
1:A:87:ARG:NH1	1:A:87:ARG:HG2	2.32	0.45
1:B:208:HIS:ND1	1:B:208:HIS:C	2.70	0.45
1:B:66:LEU:O	1:B:67:PRO:C	2.55	0.45
1:C:34:GLU:HG2	1:C:51:THR:OG1	2.17	0.45
1:C:176:LEU:HD12	1:C:176:LEU:HA	1.74	0.45
1:B:201:THR:HG23	1:B:224:MET:SD	2.53	0.45
1:C:29:ALA:CB	1:C:30:GLU:HG3	2.32	0.45
1:C:42:VAL:C	1:C:44:GLY:H	2.20	0.45
1:C:62:HIS:CD2	1:C:69:ILE:HD12	2.51	0.45
1:B:216:GLU:HA	1:B:220:SER:HB3	1.99	0.44
1:C:20:GLY:HA2	1:C:62:HIS:CE1	2.53	0.44
1:C:88:VAL:CB	1:C:224:MET:CE	2.75	0.44
1:A:218:GLN:O	1:A:219:ASN:C	2.55	0.44
1:C:35:ASN:H	1:C:36:PRO:CD	2.21	0.44
1:C:16:VAL:HG22	1:C:58:SER:HB2	1.98	0.44
1:B:106:PHE:HD2	1:B:198:CYS:SG	2.40	0.44
1:C:133:VAL:HG11	1:C:197:GLY:HA3	2.00	0.44
1:C:137:LEU:HD13	1:C:199:ILE:HD13	1.98	0.44
1:C:39:VAL:HG22	1:C:48:TYR:HA	1.99	0.44
1:B:19:CYS:O	1:B:61:GLY:HA2	2.17	0.44
1:A:18:MET:HG3	1:A:85:ILE:HG23	2.00	0.43
1:C:139:ASP:O	1:C:142:LYS:N	2.43	0.43
1:C:205:HIS:HE1	1:C:207:LEU:HB2	1.83	0.43
1:C:26:LYS:HE3	1:C:26:LYS:HB3	1.55	0.43
1:A:100:THR:O	1:A:101:ARG:HB2	2.17	0.43
1:A:217:ARG:O	1:A:219:ASN:N	2.51	0.43
1:B:213:THR:H	1:B:216:GLU:HG2	1.84	0.43

*Continued on next page...*



*Continued from previous page...*

Atom-1	Atom-2	Interatomic distance (Å)	Clash overlap (Å)
1:C:28:ILE:O	1:C:28:ILE:HG22	2.19	0.43
1:A:18:MET:HE3	1:A:60:MET:HB3	1.99	0.43
1:C:105:ILE:CG1	1:C:199:ILE:CG2	2.96	0.43
1:C:89:GLY:O	1:C:201:THR:CG2	2.62	0.43
1:B:52:TYR:OH	1:B:226:LYS:NZ	2.52	0.43
1:B:121:MET:O	1:B:122:ASP:CB	2.67	0.43
1:C:28:ILE:HG21	1:C:225:MET:HE2	2.01	0.43
1:A:93:ALA:HB3	1:A:205:HIS:CD2	2.54	0.42
1:A:217:ARG:HB3	1:A:218:GLN:H	1.58	0.42
1:B:103:ILE:CG2	1:B:104:VAL:N	2.82	0.42
1:C:49:THR:O	1:C:49:THR:CG2	2.66	0.42
1:A:218:GLN:HG3	1:A:222:GLN:OE1	2.20	0.42
1:C:77:TYR:CE1	1:C:85:ILE:HD12	2.54	0.42
1:C:5:ASN:HA	1:C:40:ASN:OD1	2.20	0.42
1:B:209:HIS:HD2	1:B:209:HIS:H	1.65	0.42
1:B:81:LYS:HD2	1:B:81:LYS:HA	1.75	0.42
1:A:56:PRO:O	1:A:57:ILE:HD12	2.20	0.42
1:C:140:ALA:C	1:C:142:LYS:N	2.71	0.42
1:A:101:ARG:HA	1:A:101:ARG:HD3	1.54	0.41
1:A:87:ARG:NH1	1:A:87:ARG:CG	2.80	0.41
1:B:166:LEU:O	1:B:170:MET:HG3	2.20	0.41
1:A:19:CYS:O	1:A:61:GLY:HA2	2.21	0.41
1:B:32:TYR:HH	1:B:222:GLN:HB3	1.84	0.41
1:A:20:GLY:HA2	1:A:62:HIS:CE1	2.56	0.41
1:A:20:GLY:HA3	2:A:239:PO4:O4	2.21	0.41
1:C:31:THR:HG22	1:C:32:TYR:CD1	2.55	0.41
1:B:93:ALA:CB	1:B:205:HIS:CD2	2.98	0.41
1:C:106:PHE:HA	1:C:151:GLY:O	2.20	0.41
1:B:1:ALA:HB3	1:B:80:TYR:HH	1.81	0.41
1:C:140:ALA:O	1:C:142:LYS:N	2.54	0.41
1:C:152:LYS:HB2	1:C:152:LYS:HE2	1.90	0.41
1:C:33:LEU:HD12	1:C:50:GLY:HA3	1.97	0.41
1:C:57:ILE:HD12	1:C:57:ILE:HA	1.66	0.41
1:A:233:ILE:HD12	1:A:233:ILE:HA	1.77	0.41
1:C:186:PHE:N	1:C:187:PRO:HD3	2.36	0.41
1:C:40:ASN:HD22	1:C:45:ILE:HG21	1.85	0.41
1:A:31:THR:CG2	1:A:31:THR:O	2.69	0.41
1:C:62:HIS:NE2	1:C:87:ARG:NH1	2.67	0.41
1:A:125:TYR:CD2	1:A:125:TYR:C	2.95	0.40
1:A:16:VAL:O	1:A:85:ILE:HA	2.21	0.40
1:A:207:LEU:HA	1:A:207:LEU:HD23	1.74	0.40

*Continued on next page...*

*Continued from previous page...*

Atom-1	Atom-2	Interatomic distance (Å)	Clash overlap (Å)
1:C:104:VAL:O	1:C:200:CYS:SG	2.79	0.40
1:C:46:GLN:OE1	1:C:46:GLN:HA	2.21	0.40
1:B:18:MET:HA	1:B:60:MET:O	2.21	0.40
1:B:94:ILE:O	1:B:207:LEU:HD12	2.22	0.40
1:A:111:THR:HB	1:A:183:ALA:CB	2.52	0.40
1:C:31:THR:O	1:C:32:TYR:CG	2.75	0.40
1:B:38:LEU:HA	1:B:48:TYR:CD2	2.57	0.40

There are no symmetry-related clashes.

## 5.3 Torsion angles [i](#)

### 5.3.1 Protein backbone [i](#)

In the following table, the Percentiles column shows the percent Ramachandran outliers of the chain as a percentile score with respect to all X-ray entries followed by that with respect to entries of similar resolution.

The Analysed column shows the number of residues for which the backbone conformation was analysed, and the total number of residues.

Mol	Chain	Analysed	Favoured	Allowed	Outliers	Percentiles	
1	A	226/236 (96%)	212 (94%)	12 (5%)	2 (1%)	20	44
1	B	233/236 (99%)	204 (88%)	23 (10%)	6 (3%)	6	14
1	C	218/236 (92%)	186 (85%)	20 (9%)	12 (6%)	2	3
All	All	677/708 (96%)	602 (89%)	55 (8%)	20 (3%)	5	11

All (20) Ramachandran outliers are listed below:

Mol	Chain	Res	Type
1	B	145	ASN
1	B	223	ASN
1	C	3	PRO
1	C	200	CYS
1	C	204	ASP
1	C	30	GLU
1	C	36	PRO
1	C	199	ILE
1	A	209	HIS
1	A	218	GLN

*Continued on next page...*

*Continued from previous page...*

Mol	Chain	Res	Type
1	B	7	ALA
1	B	53	LYS
1	C	7	ALA
1	C	9	VAL
1	C	31	THR
1	B	9	VAL
1	C	132	ASP
1	B	210	GLU
1	C	32	TYR
1	C	35	ASN

### 5.3.2 Protein sidechains [i](#)

In the following table, the Percentiles column shows the percent sidechain outliers of the chain as a percentile score with respect to all X-ray entries followed by that with respect to entries of similar resolution.

The Analysed column shows the number of residues for which the sidechain conformation was analysed, and the total number of residues.

Mol	Chain	Analysed	Rotameric	Outliers	Percentiles	
1	A	190/195 (97%)	169 (89%)	21 (11%)	7	15
1	B	194/195 (100%)	171 (88%)	23 (12%)	6	13
1	C	184/195 (94%)	158 (86%)	26 (14%)	4	8
All	All	568/585 (97%)	498 (88%)	70 (12%)	5	12

All (70) residues with a non-rotameric sidechain are listed below:

Mol	Chain	Res	Type
1	A	5	ASN
1	A	8	GLN
1	A	9	VAL
1	A	83	LYS
1	A	87	ARG
1	A	101	ARG
1	A	102	ASP
1	A	112	ASN
1	A	142	LYS
1	A	149	LYS
1	A	158	LEU
1	A	165	GLU

*Continued on next page...*

*Continued from previous page...*

Mol	Chain	Res	Type
1	A	169	LEU
1	A	176	LEU
1	A	179	GLU
1	A	185	LEU
1	A	206	ILE
1	A	217	ARG
1	A	220	SER
1	A	222	GLN
1	A	233	ILE
1	B	5	ASN
1	B	9	VAL
1	B	19	CYS
1	B	83	LYS
1	B	88	VAL
1	B	91	CYS
1	B	100	THR
1	B	112	ASN
1	B	119	ARG
1	B	158	LEU
1	B	169	LEU
1	B	176	LEU
1	B	179	GLU
1	B	201	THR
1	B	208	HIS
1	B	212	THR
1	B	220	SER
1	B	222	GLN
1	B	223	ASN
1	B	224	MET
1	B	230	GLU
1	B	233	ILE
1	B	234	LYS
1	C	8	GLN
1	C	11	ASP
1	C	24	ARG
1	C	26	LYS
1	C	33	LEU
1	C	39	VAL
1	C	41	ASN
1	C	45	ILE
1	C	57	ILE
1	C	62	HIS

*Continued on next page...*

*Continued from previous page...*

Mol	Chain	Res	Type
1	C	79	THR
1	C	83	LYS
1	C	90	THR
1	C	112	ASN
1	C	115	ILE
1	C	119	ARG
1	C	145	ASN
1	C	157	ASP
1	C	158	LEU
1	C	165	GLU
1	C	169	LEU
1	C	176	LEU
1	C	179	GLU
1	C	185	LEU
1	C	206	ILE
1	C	226	LYS

Some sidechains can be flipped to improve hydrogen bonding and reduce clashes. All (29) such sidechains are listed below:

Mol	Chain	Res	Type
1	A	5	ASN
1	A	41	ASN
1	A	46	GLN
1	A	112	ASN
1	A	116	ASN
1	A	168	GLN
1	A	208	HIS
1	A	209	HIS
1	A	219	ASN
1	A	223	ASN
1	B	5	ASN
1	B	41	ASN
1	B	46	GLN
1	B	112	ASN
1	B	116	ASN
1	B	168	GLN
1	B	174	HIS
1	B	208	HIS
1	B	209	HIS
1	B	223	ASN
1	C	4	HIS
1	C	5	ASN

*Continued on next page...*

*Continued from previous page...*

Mol	Chain	Res	Type
1	C	35	ASN
1	C	41	ASN
1	C	46	GLN
1	C	112	ASN
1	C	116	ASN
1	C	174	HIS
1	C	223	ASN

### 5.3.3 RNA ⓘ

There are no RNA molecules in this entry.

## 5.4 Non-standard residues in protein, DNA, RNA chains ⓘ

There are no non-standard protein/DNA/RNA residues in this entry.

## 5.5 Carbohydrates ⓘ

There are no carbohydrates in this entry.

## 5.6 Ligand geometry ⓘ

8 ligands are modelled in this entry.

In the following table, the Counts columns list the number of bonds (or angles) for which Mogul statistics could be retrieved, the number of bonds (or angles) that are observed in the model and the number of bonds (or angles) that are defined in the Chemical Component Dictionary. The Link column lists molecule types, if any, to which the group is linked. The Z score for a bond length (or angle) is the number of standard deviations the observed value is removed from the expected value. A bond length (or angle) with  $|Z| > 2$  is considered an outlier worth inspection. RMSZ is the root-mean-square of all Z scores of the bond lengths (or angles).

Mol	Type	Chain	Res	Link	Bond lengths			Bond angles		
					Counts	RMSZ	$\# Z  > 2$	Counts	RMSZ	$\# Z  > 2$
2	PO4	A	239	-	4,4,4	0.60	0	6,6,6	1.18	0
2	PO4	A	242	-	4,4,4	1.69	1 (25%)	6,6,6	0.29	0
3	UA2	A	243	-	20,21,21	1.41	2 (10%)	17,31,31	1.98	7 (41%)
2	PO4	B	240	-	4,4,4	1.20	0	6,6,6	1.51	2 (33%)
3	UA2	B	241	-	20,21,21	1.19	2 (10%)	17,31,31	2.56	9 (52%)
2	PO4	C	238	-	4,4,4	0.93	0	6,6,6	0.53	0

Mol	Type	Chain	Res	Link	Bond lengths			Bond angles		
					Counts	RMSZ	# Z  > 2	Counts	RMSZ	# Z  > 2
2	PO4	C	241	-	4,4,4	0.59	0	6,6,6	1.02	0
3	UA2	C	242	-	20,21,21	1.18	2 (10%)	17,31,31	1.77	3 (17%)

In the following table, the Chirals column lists the number of chiral outliers, the number of chiral centers analysed, the number of these observed in the model and the number defined in the Chemical Component Dictionary. Similar counts are reported in the Torsion and Rings columns. '-' means no outliers of that kind were identified.

Mol	Type	Chain	Res	Link	Chirals	Torsions	Rings
2	PO4	A	239	-	-	0/0/0/0	0/0/0/0
2	PO4	A	242	-	-	0/0/0/0	0/0/0/0
3	UA2	A	243	-	-	0/2/22/22	0/3/3/3
2	PO4	B	240	-	-	0/0/0/0	0/0/0/0
3	UA2	B	241	-	-	0/2/22/22	0/3/3/3
2	PO4	C	238	-	-	0/0/0/0	0/0/0/0
2	PO4	C	241	-	-	0/0/0/0	0/0/0/0
3	UA2	C	242	-	-	0/2/22/22	0/3/3/3

All (7) bond length outliers are listed below:

Mol	Chain	Res	Type	Atoms	Z	Observed(Å)	Ideal(Å)
3	A	243	UA2	C3'-C4'	-4.14	1.50	1.53
3	B	241	UA2	C3'-C4'	-3.91	1.50	1.53
3	C	242	UA2	C9-C1'	-2.71	1.50	1.53
3	B	241	UA2	C2-N3	2.27	1.36	1.32
3	A	243	UA2	C2-N3	2.96	1.37	1.32
3	C	242	UA2	C2-N3	3.19	1.37	1.32
2	A	242	PO4	P-O1	3.28	1.57	1.50

All (21) bond angle outliers are listed below:

Mol	Chain	Res	Type	Atoms	Z	Observed(°)	Ideal(°)
3	B	241	UA2	N3-C2-N1	-4.74	124.73	128.86
3	B	241	UA2	C9-C1'-N4'	-4.71	105.10	112.52
3	B	241	UA2	O3'-C3'-C4'	-4.62	101.63	112.26
3	C	242	UA2	C9-C1'-N4'	-4.27	105.80	112.52
3	C	242	UA2	N3-C2-N1	-3.65	125.68	128.86
3	A	243	UA2	C9-C1'-N4'	-3.63	106.80	112.52
3	A	243	UA2	N3-C2-N1	-3.52	125.79	128.86
3	A	243	UA2	C5-C4-N3	-3.41	120.95	124.92
3	B	241	UA2	C5-C4-N3	-3.31	121.08	124.92
3	C	242	UA2	C5-C4-N3	-2.88	121.58	124.92

*Continued on next page...*

*Continued from previous page...*

Mol	Chain	Res	Type	Atoms	Z	Observed(°)	Ideal(°)
3	A	243	UA2	C5'-C4'-C3'	-2.83	108.60	113.67
3	A	243	UA2	O3'-C3'-C4'	-2.68	106.08	112.26
2	B	240	PO4	O3-P-O2	-2.39	99.13	107.90
3	B	241	UA2	C5'-C4'-C3'	-2.34	109.48	113.67
3	B	241	UA2	O2'-C2'-C1'	-2.18	105.90	110.49
3	A	243	UA2	O2'-C2'-C1'	-2.16	105.93	110.49
3	B	241	UA2	O2'-C2'-C3'	-2.12	105.04	111.83
3	A	243	UA2	C9-C4-C5	-2.02	106.81	116.31
2	B	240	PO4	O4-P-O2	2.09	115.59	107.90
3	B	241	UA2	C5-C6-N6	2.14	124.84	120.47
3	B	241	UA2	C5'-C4'-N4'	2.23	115.61	111.39

There are no chirality outliers.

There are no torsion outliers.

There are no ring outliers.

2 monomers are involved in 2 short contacts:

Mol	Chain	Res	Type	Clashes	Symm-Clashes
2	A	239	PO4	1	0
2	C	238	PO4	1	0

## 5.7 Other polymers [i](#)

There are no such residues in this entry.

## 5.8 Polymer linkage issues [i](#)

The following chains have linkage breaks:

Mol	Chain	Number of breaks
1	C	1

All chain breaks are listed below:

Model	Chain	Residue-1	Atom-1	Residue-2	Atom-2	Distance (Å)
1	C	103:ILE	C	104:VAL	N	1.18



## 6 Fit of model and data

### 6.1 Protein, DNA and RNA chains

In the following table, the column labelled ‘#RSRZ> 2’ contains the number (and percentage) of RSRZ outliers, followed by percent RSRZ outliers for the chain as percentile scores relative to all X-ray entries and entries of similar resolution. The OWAB column contains the minimum, median, 95<sup>th</sup> percentile and maximum values of the occupancy-weighted average B-factor per residue. The column labelled ‘Q< 0.9’ lists the number of (and percentage) of residues with an average occupancy less than 0.9.

Mol	Chain	Analysed	<RSRZ>	#RSRZ>2	OWAB(Å <sup>2</sup> )	Q<0.9
1	A	230/236 (97%)	-0.56	3 (1%) 77 79	39, 55, 79, 103	0
1	B	235/236 (99%)	-0.46	5 (2%) 64 67	40, 58, 81, 96	0
1	C	224/236 (94%)	-0.17	11 (4%) 30 30	27, 62, 82, 96	1 (0%)
All	All	689/708 (97%)	-0.40	19 (2%) 53 56	27, 58, 81, 103	1 (0%)

All (19) RSRZ outliers are listed below:

Mol	Chain	Res	Type	RSRZ
1	C	200	CYS	9.3
1	C	199	ILE	5.1
1	C	219	ASN	4.4
1	A	209	HIS	4.3
1	B	145	ASN	3.9
1	C	29	ALA	3.9
1	A	97	ASP	3.4
1	C	30	GLU	3.3
1	B	209	HIS	3.1
1	C	97	ASP	2.7
1	C	34	GLU	2.5
1	C	145	ASN	2.4
1	B	210	GLU	2.2
1	C	27	LEU	2.1
1	C	31	THR	2.1
1	B	92	GLY	2.1
1	A	101	ARG	2.1
1	B	54	GLY	2.1
1	C	51	THR	2.0

## 6.2 Non-standard residues in protein, DNA, RNA chains [i](#)

There are no non-standard protein/DNA/RNA residues in this entry.

## 6.3 Carbohydrates [i](#)

There are no carbohydrates in this entry.

## 6.4 Ligands [i](#)

In the following table, the Atoms column lists the number of modelled atoms in the group and the number defined in the chemical component dictionary. LLDF column lists the quality of electron density of the group with respect to its neighbouring residues in protein, DNA or RNA chains. The B-factors column lists the minimum, median, 95<sup>th</sup> percentile and maximum values of B factors of atoms in the group. The column labelled 'Q< 0.9' lists the number of atoms with occupancy less than 0.9.

Mol	Type	Chain	Res	Atoms	RSCC	RSR	LLDF	B-factors(Å <sup>2</sup> )	Q<0.9
2	PO4	A	242	5/5	0.85	0.27	8.50	108,108,109,111	0
2	PO4	C	241	5/5	0.91	0.29	4.81	107,107,108,108	0
3	UA2	A	243	19/19	0.91	0.21	2.86	66,73,76,76	0
3	UA2	C	242	19/19	0.91	0.20	1.41	70,74,75,75	0
2	PO4	C	238	5/5	0.93	0.19	1.08	92,93,94,94	0
3	UA2	B	241	19/19	0.96	0.13	-0.10	54,57,58,60	0
2	PO4	B	240	5/5	0.99	0.09	-0.63	56,58,60,61	0
2	PO4	A	239	5/5	0.99	0.09	-0.67	69,69,70,71	0

## 6.5 Other polymers [i](#)

There are no such residues in this entry.