



# Full wwPDB X-ray Structure Validation Report ⓘ

Feb 12, 2017 – 10:12 pm GMT

PDB ID : 1I9O  
Title : CARBONIC ANHYDRASE II (F131V) COMPLEXED WITH 4-(AMINOSULFONYL)-N-[(2,3,4-TRIFLUOROPHENYL)METHYL]-BENZAMIDE  
Authors : Kim, C.-Y.; Chandra, P.P.; Jain, A.; Christianson, D.W.  
Deposited on : 2001-03-20  
Resolution : 1.86 Å(reported)

This is a Full wwPDB X-ray Structure Validation Report for a publicly released PDB entry.

We welcome your comments at [validation@mail.wwpdb.org](mailto:validation@mail.wwpdb.org)

A user guide is available at

<http://wwpdb.org/validation/2016/XrayValidationReportHelp>

with specific help available everywhere you see the ⓘ symbol.

---

The following versions of software and data (see [references ⓘ](#)) were used in the production of this report:

MolProbity	:	4.02b-467
Mogul	:	1.7.2 (RC1), CSD as538be (2017)
Xtriage (Phenix)	:	NOT EXECUTED
EDS	:	NOT EXECUTED
Percentile statistics	:	20161228.v01 (using entries in the PDB archive December 28th 2016)
Ideal geometry (proteins)	:	Engh & Huber (2001)
Ideal geometry (DNA, RNA)	:	Parkinson et al. (1996)
Validation Pipeline (wwPDB-VP)	:	recalc28949

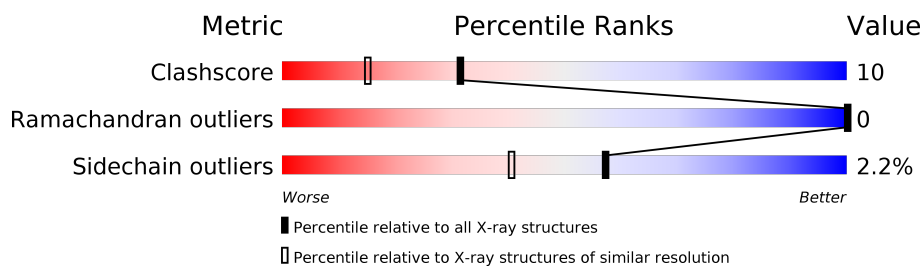
# 1 Overall quality at a glance

The following experimental techniques were used to determine the structure:

*X-RAY DIFFRACTION*

The reported resolution of this entry is 1.86 Å.

Percentile scores (ranging between 0-100) for global validation metrics of the entry are shown in the following graphic. The table shows the number of entries on which the scores are based.



Metric	Whole archive (#Entries)	Similar resolution (#Entries, resolution range(Å))
Clashscore	112137	2083 (1.86-1.86)
Ramachandran outliers	110173	2060 (1.86-1.86)
Sidechain outliers	110143	2060 (1.86-1.86)

The table below summarises the geometric issues observed across the polymeric chains and their fit to the electron density. The red, orange, yellow and green segments on the lower bar indicate the fraction of residues that contain outliers for  $\geq 3$ , 2, 1 and 0 types of geometric quality criteria. A grey segment represents the fraction of residues that are not modelled. The numeric value for each fraction is indicated below the corresponding segment, with a dot representing fractions  $\leq 5\%$ . The upper red bar (where present) indicates the fraction of residues that have poor fit to the electron density. The numeric value is given above the bar.

Note EDS was not executed.

Mol	Chain	Length	Quality of chain
1	A	259	

## 2 Entry composition

There are 5 unique types of molecules in this entry. The entry contains 2216 atoms, of which 0 are hydrogens and 0 are deuteriums.

In the tables below, the ZeroOcc column contains the number of atoms modelled with zero occupancy, the AltConf column contains the number of residues with at least one atom in alternate conformation and the Trace column contains the number of residues modelled with at most 2 atoms.

- Molecule 1 is a protein called CARBONIC ANHYDRASE II.

Mol	Chain	Residues	Atoms					ZeroOcc	AltConf	Trace
1	A	258	Total	C	N	O	S	0	0	0
			2054	1317	355	380	2			

There is a discrepancy between the modelled and reference sequences:

Chain	Residue	Modelled	Actual	Comment	Reference
A	131	VAL	PHE	ENGINEERED	UNP P00918

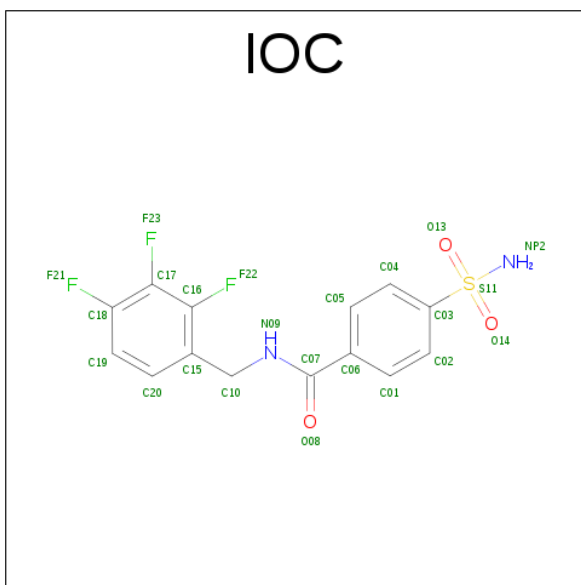
- Molecule 2 is ZINC ION (three-letter code: ZN) (formula: Zn).

Mol	Chain	Residues	Atoms		ZeroOcc	AltConf
2	A	1	Total	Zn	0	0
			1	1		

- Molecule 3 is MERCURY (II) ION (three-letter code: HG) (formula: Hg).

Mol	Chain	Residues	Atoms		ZeroOcc	AltConf
3	A	1	Total	Hg	0	0
			1	1		

- Molecule 4 is 4-(AMINOSULFONYL)-N-[(2,3,4-TRIFLUOROPHENYL)METHYL]-BENZAMIDE (three-letter code: IOC) (formula: C<sub>14</sub>H<sub>11</sub>F<sub>3</sub>N<sub>2</sub>O<sub>3</sub>S).



Mol	Chain	Residues	Atoms						ZeroOcc	AltConf
4	A	1	Total	C	F	N	O	S	0	0
			23	14	3	2	3	1		
4	A	1	Total	C	F	N	O	S	0	0
			23	14	3	2	3	1		

- Molecule 5 is water.

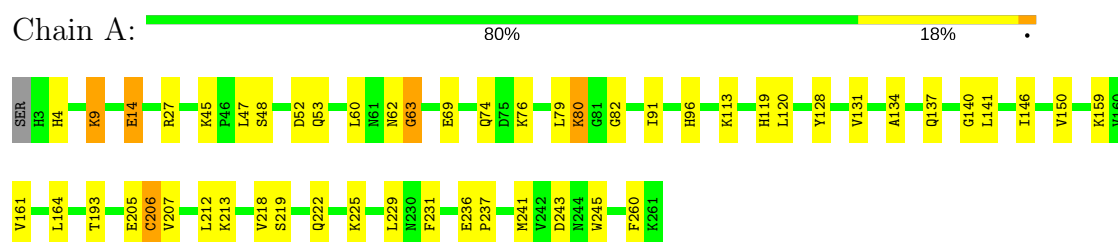
Mol	Chain	Residues	Atoms		ZeroOcc	AltConf
5	A	114	Total	O	0	0
			114	114		

### 3 Residue-property plots [i](#)

These plots are drawn for all protein, RNA and DNA chains in the entry. The first graphic for a chain summarises the proportions of the various outlier classes displayed in the second graphic. The second graphic shows the sequence view annotated by issues in geometry and electron density. Residues are color-coded according to the number of geometric quality criteria for which they contain at least one outlier: green = 0, yellow = 1, orange = 2 and red = 3 or more. A red dot above a residue indicates a poor fit to the electron density ( $RSRZ > 2$ ). Stretches of 2 or more consecutive residues without any outlier are shown as a green connector. Residues present in the sample, but not in the model, are shown in grey.

Note EDS was not executed.

#### • Molecule 1: CARBONIC ANHYDRASE II



## 4 Data and refinement statistics

Xtriage (Phenix) and EDS were not executed - this section is therefore incomplete.

Property	Value	Source
Space group	P 1 21 1	Depositor
Cell constants a, b, c, $\alpha$ , $\beta$ , $\gamma$	43.06Å 42.41Å 73.12Å 90.00° 104.99° 90.00°	Depositor
Resolution (Å)	20.00 – 1.86	Depositor
% Data completeness (in resolution range)	(Not available) (20.00-1.86)	Depositor
$R_{merge}$	0.05	Depositor
$R_{sym}$	(Not available)	Depositor
Refinement program	X-PLOR	Depositor
R, $R_{free}$	0.212 , 0.278	Depositor
Estimated twinning fraction	No twinning to report.	Xtriage
Total number of atoms	2216	wwPDB-VP
Average B, all atoms (Å <sup>2</sup> )	15.0	wwPDB-VP

## 5 Model quality [i](#)

### 5.1 Standard geometry [i](#)

Bond lengths and bond angles in the following residue types are not validated in this section: ZN, IOC, HG

The Z score for a bond length (or angle) is the number of standard deviations the observed value is removed from the expected value. A bond length (or angle) with  $|Z| > 5$  is considered an outlier worth inspection. RMSZ is the root-mean-square of all Z scores of the bond lengths (or angles).

Mol	Chain	Bond lengths		Bond angles	
		RMSZ	$\# Z  > 5$	RMSZ	$\# Z  > 5$
1	A	0.62	1/2115 (0.0%)	0.74	1/2871 (0.0%)

All (1) bond length outliers are listed below:

Mol	Chain	Res	Type	Atoms	Z	Observed(Å)	Ideal(Å)
1	A	206	CYS	CB-SG	8.21	1.96	1.82

All (1) bond angle outliers are listed below:

Mol	Chain	Res	Type	Atoms	Z	Observed(°)	Ideal(°)
1	A	63	GLY	N-CA-C	-5.75	98.72	113.10

There are no chirality outliers.

There are no planarity outliers.

### 5.2 Too-close contacts [i](#)

In the following table, the Non-H and H(model) columns list the number of non-hydrogen atoms and hydrogen atoms in the chain respectively. The H(added) column lists the number of hydrogen atoms added and optimized by MolProbity. The Clashes column lists the number of clashes within the asymmetric unit, whereas Symm-Clashes lists symmetry related clashes.

Mol	Chain	Non-H	H(model)	H(added)	Clashes	Symm-Clashes
1	A	2054	0	2009	41	0
2	A	1	0	0	0	0
3	A	1	0	0	1	0
4	A	46	0	22	1	0
5	A	114	0	0	9	0
All	All	2216	0	2031	41	0

The all-atom clashscore is defined as the number of clashes found per 1000 atoms (including hydrogen atoms). The all-atom clashscore for this structure is 10.

All (41) close contacts within the same asymmetric unit are listed below, sorted by their clash magnitude.

Atom-1	Atom-2	Interatomic distance (Å)	Clash overlap (Å)
1:A:131:VAL:HB	5:A:278:HOH:O	1.83	0.77
1:A:79:LEU:HD13	5:A:330:HOH:O	1.90	0.71
1:A:52:ASP:HB2	5:A:277:HOH:O	1.93	0.67
1:A:161:VAL:CG1	1:A:225:LYS:HD2	2.27	0.63
1:A:128:TYR:CE1	1:A:137:GLN:HG3	2.35	0.61
1:A:9:LYS:HA	1:A:9:LYS:HE3	1.85	0.59
1:A:60:LEU:HB2	5:A:288:HOH:O	2.01	0.59
1:A:76:LYS:HD2	5:A:359:HOH:O	2.03	0.57
1:A:48:SER:HB3	1:A:80:LYS:HG2	1.85	0.57
1:A:47:LEU:HD22	1:A:79:LEU:HD11	1.87	0.57
1:A:193:THR:HG22	5:A:335:HOH:O	2.04	0.57
1:A:131:VAL:HG21	5:A:300:HOH:O	2.05	0.56
1:A:62:ASN:OD1	1:A:63:GLY:O	2.24	0.55
1:A:14:GLU:CD	1:A:14:GLU:H	2.10	0.55
1:A:243:ASP:HA	1:A:245:TRP:CD1	2.42	0.53
1:A:159:LYS:HE2	5:A:291:HOH:O	2.08	0.51
1:A:96:HIS:CD2	1:A:119:HIS:CE1	2.98	0.51
1:A:161:VAL:HG13	1:A:225:LYS:HD2	1.93	0.50
1:A:91:ILE:HD12	1:A:131:VAL:HG11	1.94	0.50
1:A:219:SER:OG	1:A:222:GLN:HG3	2.12	0.49
1:A:27:ARG:HG3	1:A:205:GLU:HB3	1.96	0.48
1:A:113:LYS:HD3	5:A:347:HOH:O	2.13	0.48
1:A:69:GLU:HB3	4:A:666:IOC:H041	1.96	0.47
1:A:45:LYS:O	1:A:82:GLY:HA2	2.14	0.47
1:A:53:GLN:O	1:A:76:LYS:HB3	2.14	0.47
1:A:146:ILE:HG12	1:A:212:LEU:HD12	1.97	0.47
1:A:128:TYR:CZ	1:A:137:GLN:HG3	2.49	0.47
1:A:231:PHE:CE1	1:A:241:MET:HG3	2.50	0.46
1:A:80:LYS:HB3	1:A:80:LYS:HE2	1.80	0.45
1:A:206:CYS:HG	3:A:263:HG:HG	0.48	0.45
1:A:236:GLU:HB3	1:A:237:PRO:HD2	1.99	0.45
1:A:62:ASN:C	1:A:63:GLY:O	2.56	0.44
1:A:134:ALA:O	1:A:140:GLY:HA3	2.19	0.43
1:A:141:LEU:HB2	1:A:207:VAL:HG22	2.01	0.43
1:A:74:GLN:HE21	1:A:76:LYS:HE3	1.84	0.43
1:A:213:LYS:HD3	1:A:260:PHE:CZ	2.54	0.42
1:A:150:VAL:HA	1:A:218:VAL:O	2.20	0.42

*Continued on next page...*



*Continued from previous page...*

Atom-1	Atom-2	Interatomic distance (Å)	Clash overlap (Å)
1:A:9:LYS:CA	1:A:9:LYS:HE3	2.50	0.42
1:A:164:LEU:HB3	1:A:229:LEU:HD21	2.02	0.41
1:A:96:HIS:NE2	1:A:119:HIS:CE1	2.89	0.41
1:A:128:TYR:CD1	1:A:137:GLN:HG3	2.56	0.40

There are no symmetry-related clashes.

## 5.3 Torsion angles [i](#)

### 5.3.1 Protein backbone [i](#)

In the following table, the Percentiles column shows the percent Ramachandran outliers of the chain as a percentile score with respect to all X-ray entries followed by that with respect to entries of similar resolution.

The Analysed column shows the number of residues for which the backbone conformation was analysed, and the total number of residues.

Mol	Chain	Analysed	Favoured	Allowed	Outliers	Percentiles	
1	A	256/259 (99%)	241 (94%)	15 (6%)	0	100	100

There are no Ramachandran outliers to report.

### 5.3.2 Protein sidechains [i](#)

In the following table, the Percentiles column shows the percent sidechain outliers of the chain as a percentile score with respect to all X-ray entries followed by that with respect to entries of similar resolution.

The Analysed column shows the number of residues for which the sidechain conformation was analysed, and the total number of residues.

Mol	Chain	Analysed	Rotameric	Outliers	Percentiles	
1	A	223/224 (100%)	218 (98%)	5 (2%)	57	40

All (5) residues with a non-rotameric sidechain are listed below:

Mol	Chain	Res	Type
1	A	4	HIS
1	A	9	LYS

*Continued on next page...*

*Continued from previous page...*

Mol	Chain	Res	Type
1	A	14	GLU
1	A	80	LYS
1	A	120	LEU

Some sidechains can be flipped to improve hydrogen bonding and reduce clashes. All (7) such sidechains are listed below:

Mol	Chain	Res	Type
1	A	3	HIS
1	A	36	HIS
1	A	64	HIS
1	A	67	ASN
1	A	74	GLN
1	A	137	GLN
1	A	230	ASN

### 5.3.3 RNA [i](#)

There are no RNA molecules in this entry.

## 5.4 Non-standard residues in protein, DNA, RNA chains [i](#)

There are no non-standard protein/DNA/RNA residues in this entry.

## 5.5 Carbohydrates [i](#)

There are no carbohydrates in this entry.

## 5.6 Ligand geometry [i](#)

Of 4 ligands modelled in this entry, 2 are monoatomic - leaving 2 for Mogul analysis.

In the following table, the Counts columns list the number of bonds (or angles) for which Mogul statistics could be retrieved, the number of bonds (or angles) that are observed in the model and the number of bonds (or angles) that are defined in the chemical component dictionary. The Link column lists molecule types, if any, to which the group is linked. The Z score for a bond length (or angle) is the number of standard deviations the observed value is removed from the expected value. A bond length (or angle) with  $|Z| > 2$  is considered an outlier worth inspection. RMSZ is the root-mean-square of all Z scores of the bond lengths (or angles).

Mol	Type	Chain	Res	Link	Bond lengths			Bond angles		
					Counts	RMSZ	# Z  > 2	Counts	RMSZ	# Z  > 2
4	IOC	A	555	2	24,24,24	4.32	15 (62%)	34,35,35	3.26	11 (32%)
4	IOC	A	666	-	24,24,24	4.24	14 (58%)	34,35,35	3.24	12 (35%)

In the following table, the Chirals column lists the number of chiral outliers, the number of chiral centers analysed, the number of these observed in the model and the number defined in the chemical component dictionary. Similar counts are reported in the Torsion and Rings columns. '-' means no outliers of that kind were identified.

Mol	Type	Chain	Res	Link	Chirals	Torsions	Rings
4	IOC	A	555	2	-	0/15/15/15	0/2/2/2
4	IOC	A	666	-	-	0/15/15/15	0/2/2/2

All (29) bond length outliers are listed below:

Mol	Chain	Res	Type	Atoms	Z	Observed(Å)	Ideal(Å)
4	A	555	IOC	F22-C16	-7.01	1.23	1.35
4	A	666	IOC	F22-C16	-6.93	1.23	1.35
4	A	666	IOC	F21-C18	-4.73	1.23	1.35
4	A	555	IOC	F21-C18	-4.65	1.24	1.35
4	A	666	IOC	C10-C15	-2.75	1.41	1.50
4	A	555	IOC	C10-C15	-2.57	1.41	1.50
4	A	555	IOC	O08-C07	2.01	1.27	1.23
4	A	555	IOC	C05-C04	2.30	1.42	1.38
4	A	666	IOC	O13-S11	2.59	1.49	1.43
4	A	555	IOC	O14-S11	2.69	1.49	1.43
4	A	666	IOC	O14-S11	3.40	1.50	1.43
4	A	666	IOC	C20-C19	3.65	1.45	1.38
4	A	555	IOC	C20-C19	3.71	1.45	1.38
4	A	666	IOC	C19-C18	4.21	1.46	1.37
4	A	555	IOC	C02-C03	4.43	1.45	1.38
4	A	666	IOC	C02-C03	4.81	1.46	1.38
4	A	555	IOC	C19-C18	5.11	1.48	1.37
4	A	666	IOC	S11-NP2	5.25	1.71	1.60
4	A	555	IOC	C18-C17	5.36	1.48	1.37
4	A	555	IOC	S11-NP2	5.37	1.72	1.60
4	A	666	IOC	C07-N09	5.55	1.46	1.33
4	A	666	IOC	C18-C17	5.77	1.49	1.37
4	A	666	IOC	C20-C15	6.04	1.49	1.39
4	A	666	IOC	C17-C16	6.09	1.48	1.37
4	A	555	IOC	C17-C16	6.41	1.49	1.37
4	A	555	IOC	C07-N09	6.50	1.48	1.33
4	A	555	IOC	C20-C15	6.97	1.51	1.39

*Continued on next page...*

*Continued from previous page...*

Mol	Chain	Res	Type	Atoms	Z	Observed(Å)	Ideal(Å)
4	A	555	IOC	C15-C16	9.91	1.49	1.38
4	A	666	IOC	C15-C16	10.13	1.49	1.38

All (23) bond angle outliers are listed below:

Mol	Chain	Res	Type	Atoms	Z	Observed(°)	Ideal(°)
4	A	666	IOC	O13-S11-C03	-8.79	97.10	107.39
4	A	555	IOC	O13-S11-C03	-8.24	97.75	107.39
4	A	555	IOC	O14-S11-C03	-6.83	99.40	107.39
4	A	666	IOC	O14-S11-C03	-6.46	99.83	107.39
4	A	555	IOC	O14-S11-O13	-5.66	108.33	118.70
4	A	666	IOC	O14-S11-O13	-5.22	109.12	118.70
4	A	666	IOC	O08-C07-C06	-2.70	116.14	120.94
4	A	666	IOC	C04-C03-S11	2.00	122.75	119.76
4	A	555	IOC	C06-C07-N09	2.11	121.67	117.12
4	A	666	IOC	C06-C07-N09	2.53	122.57	117.12
4	A	555	IOC	C04-C03-S11	2.90	124.08	119.76
4	A	555	IOC	C03-S11-NP2	3.95	114.12	108.41
4	A	666	IOC	C15-C10-N09	4.00	121.81	113.00
4	A	666	IOC	O14-S11-NP2	4.01	113.64	107.34
4	A	555	IOC	C15-C10-N09	4.09	122.01	113.00
4	A	555	IOC	F22-C16-C15	4.23	122.33	117.85
4	A	666	IOC	F22-C16-C15	4.29	122.39	117.85
4	A	555	IOC	O14-S11-NP2	4.60	114.57	107.34
4	A	666	IOC	C03-S11-NP2	5.34	116.12	108.41
4	A	555	IOC	C20-C15-C16	6.83	121.40	116.43
4	A	666	IOC	C20-C15-C16	6.84	121.40	116.43
4	A	666	IOC	O13-S11-NP2	7.06	118.44	107.34
4	A	555	IOC	O13-S11-NP2	7.84	119.66	107.34

There are no chirality outliers.

There are no torsion outliers.

There are no ring outliers.

1 monomer is involved in 1 short contact:

Mol	Chain	Res	Type	Clashes	Symm-Clashes
4	A	666	IOC	1	0

## 5.7 Other polymers [i](#)

There are no such residues in this entry.

## 5.8 Polymer linkage issues [i](#)

There are no chain breaks in this entry.

## 6 Fit of model and data [i](#)

### 6.1 Protein, DNA and RNA chains [i](#)

EDS was not executed - this section is therefore empty.

### 6.2 Non-standard residues in protein, DNA, RNA chains [i](#)

EDS was not executed - this section is therefore empty.

### 6.3 Carbohydrates [i](#)

EDS was not executed - this section is therefore empty.

### 6.4 Ligands [i](#)

EDS was not executed - this section is therefore empty.

### 6.5 Other polymers [i](#)

EDS was not executed - this section is therefore empty.