



Full wwPDB X-ray Structure Validation Report ⓘ

Feb 13, 2017 – 03:12 am GMT

PDB ID : 3IB0
Title : Structural basis of the prevention of NSAID-induced damage of the gastrointestinal tract by C-terminal half (C-lobe) of bovine colostrum protein lactoferrin: Binding and structural studies of C-lobe complex with diclofenac
Authors : Mir, R.; Singh, N.; Sinha, M.; Sharma, S.; Kaur, P.; Srinivasan, A.; Singh, T.P.
Deposited on : 2009-07-15
Resolution : 1.40 Å(reported)

This is a Full wwPDB X-ray Structure Validation Report for a publicly released PDB entry.

We welcome your comments at validation@mail.wwpdb.org

A user guide is available at

<http://wwpdb.org/validation/2016/XrayValidationReportHelp>

with specific help available everywhere you see the ⓘ symbol.

The following versions of software and data (see [references ⓘ](#)) were used in the production of this report:

MolProbity	:	4.02b-467
Mogul	:	1.7.2 (RC1), CSD as538be (2017)
Xtriage (Phenix)	:	1.9-1692
EDS	:	trunk28620
Percentile statistics	:	20161228.v01 (using entries in the PDB archive December 28th 2016)
Refmac	:	5.8.0135
CCP4	:	6.5.0
Ideal geometry (proteins)	:	Engh & Huber (2001)
Ideal geometry (DNA, RNA)	:	Parkinson et al. (1996)
Validation Pipeline (wwPDB-VP)	:	recalc28949

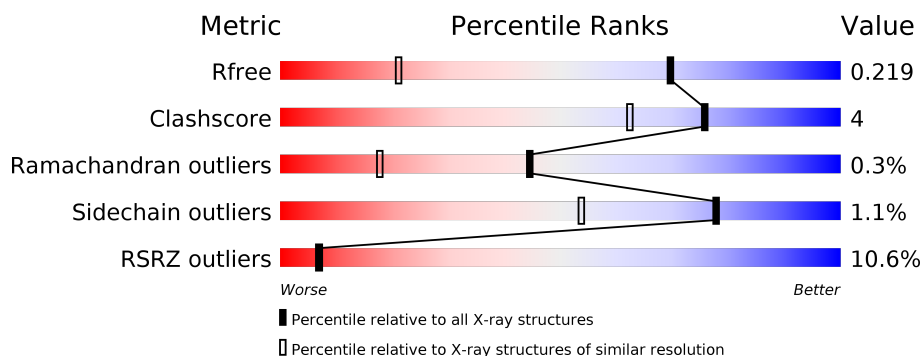
1 Overall quality at a glance

The following experimental techniques were used to determine the structure:

X-RAY DIFFRACTION

The reported resolution of this entry is 1.40 Å.

Percentile scores (ranging between 0-100) for global validation metrics of the entry are shown in the following graphic. The table shows the number of entries on which the scores are based.



Metric	Whole archive (#Entries)	Similar resolution (#Entries, resolution range(Å))
R_{free}	100719	1307 (1.40-1.40)
Clashscore	112137	1411 (1.40-1.40)
Ramachandran outliers	110173	1373 (1.40-1.40)
Sidechain outliers	110143	1372 (1.40-1.40)
RSRZ outliers	101464	1315 (1.40-1.40)

The table below summarises the geometric issues observed across the polymeric chains and their fit to the electron density. The red, orange, yellow and green segments on the lower bar indicate the fraction of residues that contain outliers for ≥ 3 , 2, 1 and 0 types of geometric quality criteria. A grey segment represents the fraction of residues that are not modelled. The numeric value for each fraction is indicated below the corresponding segment, with a dot representing fractions $\leq 5\%$. The upper red bar (where present) indicates the fraction of residues that have poor fit to the electron density. The numeric value is given above the bar.

Mol	Chain	Length	Quality of chain
1	A	345	

The following table lists non-polymeric compounds, carbohydrate monomers and non-standard residues in protein, DNA, RNA chains that are outliers for geometric or electron-density-fit criteria:

Mol	Type	Chain	Res	Chirality	Geometry	Clashes	Electron density
4	DIF	A	701	-	-	-	X
8	MAN	A	6	X	-	-	-

Continued on next page...

Continued from previous page...

Mol	Type	Chain	Res	Chirality	Geometry	Clashes	Electron density
8	MAN	A	7	X	-	-	-
9	MAN	A	11	X	-	-	-
9	MAN	A	12	X	-	-	-
9	MAN	A	13	X	-	-	-

2 Entry composition [i](#)

There are 11 unique types of molecules in this entry. The entry contains 3318 atoms, of which 0 are hydrogens and 0 are deuteriums.

In the tables below, the ZeroOcc column contains the number of atoms modelled with zero occupancy, the AltConf column contains the number of residues with at least one atom in alternate conformation and the Trace column contains the number of residues modelled with at most 2 atoms.

- Molecule 1 is a protein called Lactotransferrin.

Mol	Chain	Residues	Atoms					ZeroOcc	AltConf	Trace
			Total	C	N	O	S			
1	A	341	2609	1625	454	509	21	0	1	0

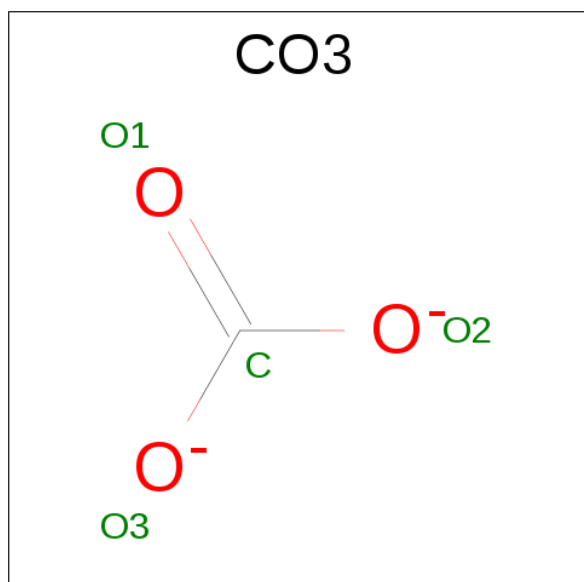
There are 2 discrepancies between the modelled and reference sequences:

Chain	Residue	Modelled	Actual	Comment	Reference
A	565	LYS	ASN	ENGINEERED	UNP P24627
A	608	GLU	LYS	ENGINEERED	UNP P24627

- Molecule 2 is FE (III) ION (three-letter code: FE) (formula: Fe).

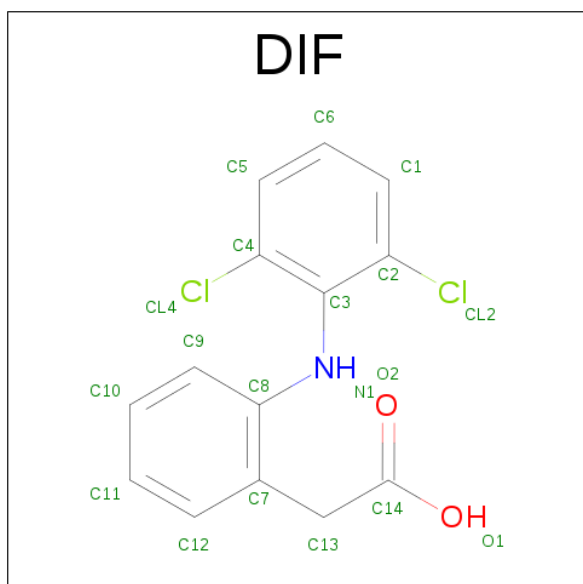
Mol	Chain	Residues	Atoms		ZeroOcc	AltConf
2	A	1	Total	Fe	0	0
			1	1		

- Molecule 3 is CARBONATE ION (three-letter code: CO3) (formula: CO₃).



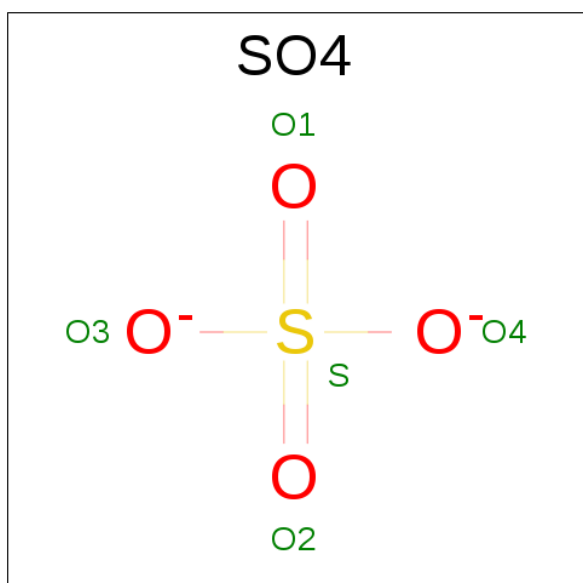
Mol	Chain	Residues	Atoms			ZeroOcc	AltConf
3	A	1	Total	C	O	0	0
			4	1	3		

- Molecule 4 is 2-[2,6-DICHLOROPHENYL)AMINO]BENZENEACETIC ACID (three-letter code: DIF) (formula: $C_{14}H_{11}Cl_2NO_2$).



Mol	Chain	Residues	Atoms					ZeroOcc	AltConf
4	A	1	Total	C	Cl	N	O	0	0
			19	14	2	1	2		

- Molecule 5 is SULFATE ION (three-letter code: SO4) (formula: O_4S).



Mol	Chain	Residues	Atoms			ZeroOcc	AltConf
5	A	1	Total	O	S	0	0
			5	4	1		
5	A	1	Total	O	S	0	0
			5	4	1		

- Molecule 6 is ZINC ION (three-letter code: ZN) (formula: Zn).

Mol	Chain	Residues	Atoms		ZeroOcc	AltConf
6	A	2	Total	Zn	0	0
			2	2		

- Molecule 7 is a polymer of unknown type called SUGAR (2-MER).

Mol	Chain	Residues	Atoms				ZeroOcc	AltConf
7	A	2	Total	C	N	O	0	0
			28	16	2	10		

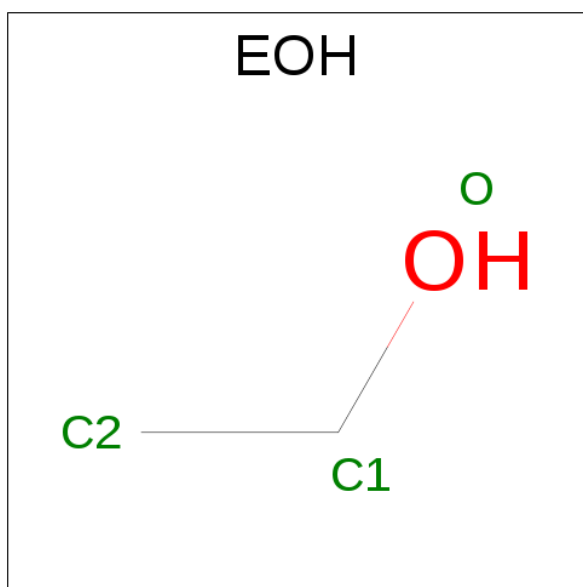
- Molecule 8 is a polymer of unknown type called SUGAR (5-MER).

Mol	Chain	Residues	Atoms				ZeroOcc	AltConf
8	A	5	Total	C	N	O	0	0
			61	34	2	25		

- Molecule 9 is a polymer of unknown type called SUGAR (6-MER).

Mol	Chain	Residues	Atoms				ZeroOcc	AltConf
9	A	6	Total	C	N	O	0	0
			72	40	2	30		

- Molecule 10 is ETHANOL (three-letter code: EOH) (formula: C₂H₆O).



Mol	Chain	Residues	Atoms			ZeroOcc	AltConf
10	A	1	Total	C	O	0	0
			3	2	1		

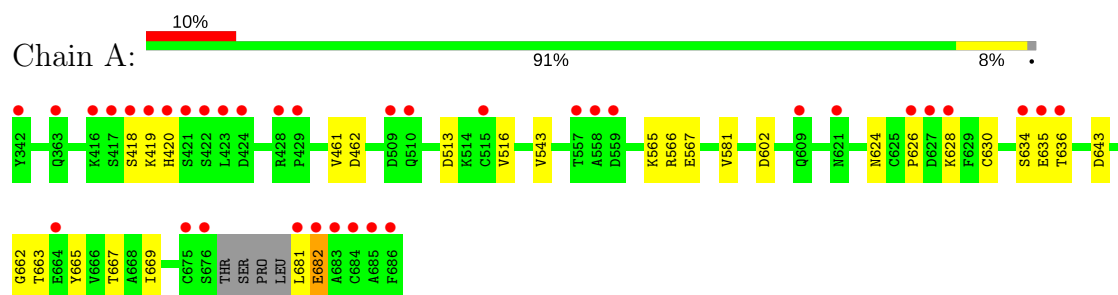
- Molecule 11 is water.

Mol	Chain	Residues	Atoms		ZeroOcc	AltConf
11	A	509	Total	O	0	0
			509	509		

3 Residue-property plots [i](#)

These plots are drawn for all protein, RNA and DNA chains in the entry. The first graphic for a chain summarises the proportions of the various outlier classes displayed in the second graphic. The second graphic shows the sequence view annotated by issues in geometry and electron density. Residues are color-coded according to the number of geometric quality criteria for which they contain at least one outlier: green = 0, yellow = 1, orange = 2 and red = 3 or more. A red dot above a residue indicates a poor fit to the electron density ($RSRZ > 2$). Stretches of 2 or more consecutive residues without any outlier are shown as a green connector. Residues present in the sample, but not in the model, are shown in grey.

• Molecule 1: Lactotransferrin



4 Data and refinement statistics

Property	Value	Source
Space group	P 1 21 1	Depositor
Cell constants a, b, c, α , β , γ	61.43Å 49.87Å 65.17Å 90.00° 107.10° 90.00°	Depositor
Resolution (Å)	62.26 – 1.40 38.01 – 1.40	Depositor EDS
% Data completeness (in resolution range)	99.6 (62.26-1.40) 99.6 (38.01-1.40)	Depositor EDS
R_{merge}	(Not available)	Depositor
R_{sym}	(Not available)	Depositor
$\langle I/\sigma(I) \rangle$ ¹	1.77 (at 1.40Å)	Xtriage
Refinement program	REFMAC 5.4.0077	Depositor
R, R_{free}	0.193 , 0.219 0.202 , 0.219	Depositor DCC
R_{free} test set	3734 reflections (5.30%)	DCC
Wilson B-factor (Å ²)	14.9	Xtriage
Anisotropy	0.329	Xtriage
Bulk solvent k_{sol} (e/Å ³), B_{sol} (Å ²)	0.39 , 49.9	EDS
L-test for twinning ²	$\langle L \rangle = 0.50$, $\langle L^2 \rangle = 0.34$	Xtriage
Estimated twinning fraction	No twinning to report.	Xtriage
F_o, F_c correlation	0.96	EDS
Total number of atoms	3318	wwPDB-VP
Average B, all atoms (Å ²)	23.0	wwPDB-VP

Xtriage's analysis on translational NCS is as follows: *The largest off-origin peak in the Patterson function is 7.13% of the height of the origin peak. No significant pseudotranslation is detected.*

¹Intensities estimated from amplitudes.

²Theoretical values of $\langle |L| \rangle$, $\langle L^2 \rangle$ for acentric reflections are 0.5, 0.333 respectively for untwinned datasets, and 0.375, 0.2 for perfectly twinned datasets.

5 Model quality

5.1 Standard geometry

Bond lengths and bond angles in the following residue types are not validated in this section: CO3, NAG, DIF, EOH, ZN, SO4, MAN, FE

The Z score for a bond length (or angle) is the number of standard deviations the observed value is removed from the expected value. A bond length (or angle) with $|Z| > 5$ is considered an outlier worth inspection. RMSZ is the root-mean-square of all Z scores of the bond lengths (or angles).

Mol	Chain	Bond lengths		Bond angles	
		RMSZ	$\# Z > 5$	RMSZ	$\# Z > 5$
1	A	0.56	1/2660 (0.0%)	0.69	4/3601 (0.1%)

Chiral center outliers are detected by calculating the chiral volume of a chiral center and verifying if the center is modelled as a planar moiety or with the opposite hand. A planarity outlier is detected by checking planarity of atoms in a peptide group, atoms in a mainchain group or atoms of a sidechain that are expected to be planar.

Mol	Chain	#Chirality outliers	#Planarity outliers
1	A	0	2
8	A	2	0
9	A	3	0
All	All	5	2

All (1) bond length outliers are listed below:

Mol	Chain	Res	Type	Atoms	Z	Observed(Å)	Ideal(Å)
1	A	420	HIS	CB-CG	8.04	1.64	1.50

All (4) bond angle outliers are listed below:

Mol	Chain	Res	Type	Atoms	Z	Observed(°)	Ideal(°)
1	A	420	HIS	CB-CA-C	-8.10	94.20	110.40
1	A	420	HIS	N-CA-CB	5.76	120.97	110.60
1	A	602	ASP	CB-CG-OD1	5.67	123.40	118.30
1	A	420	HIS	CA-CB-CG	5.09	122.25	113.60

All (5) chirality outliers are listed below:

Mol	Chain	Res	Type	Atom
8	A	6	MAN	C1

Continued on next page...

Continued from previous page...

Mol	Chain	Res	Type	Atom
8	A	7	MAN	C1
9	A	11	MAN	C1
9	A	12	MAN	C1
9	A	13	MAN	C1

All (2) planarity outliers are listed below:

Mol	Chain	Res	Type	Group
1	A	681	LEU	Peptide
1	A	682	GLU	Peptide

5.2 Too-close contacts [i](#)

In the following table, the Non-H and H(model) columns list the number of non-hydrogen atoms and hydrogen atoms in the chain respectively. The H(added) column lists the number of hydrogen atoms added and optimized by MolProbity. The Clashes column lists the number of clashes within the asymmetric unit, whereas Symm-Clashes lists symmetry related clashes.

Mol	Chain	Non-H	H(model)	H(added)	Clashes	Symm-Clashes
1	A	2609	0	2526	18	0
2	A	1	0	0	0	0
3	A	4	0	0	0	0
4	A	19	0	10	4	0
5	A	10	0	0	0	0
6	A	2	0	0	0	0
7	A	28	0	25	0	0
8	A	61	0	52	0	0
9	A	72	0	60	2	0
10	A	3	0	6	0	0
11	A	509	0	0	0	0
All	All	3318	0	2679	20	0

The all-atom clashscore is defined as the number of clashes found per 1000 atoms (including hydrogen atoms). The all-atom clashscore for this structure is 4.

All (20) close contacts within the same asymmetric unit are listed below, sorted by their clash magnitude.

Atom-1	Atom-2	Interatomic distance (Å)	Clash overlap (Å)
1:A:662:GLY:HA2	4:A:701:DIF:H132	1.46	0.97
1:A:565:LYS:HE3	1:A:567:GLU:H	1.44	0.81

Continued on next page...

Continued from previous page...

Atom-1	Atom-2	Interatomic distance (Å)	Clash overlap (Å)
1:A:663:THR:O	1:A:667:THR:HG23	1.85	0.77
1:A:565:LYS:HE3	1:A:567:GLU:HB2	1.74	0.69
1:A:662:GLY:CA	4:A:701:DIF:H132	2.23	0.69
1:A:565:LYS:HE3	1:A:567:GLU:N	2.09	0.67
1:A:461:VAL:O	1:A:462:ASP:HB2	2.01	0.60
1:A:565:LYS:CE	1:A:567:GLU:HB2	2.35	0.57
1:A:626:PRO:HA	1:A:630:CYS:SG	2.46	0.56
1:A:566:ARG:HG2	1:A:581:VAL:HG21	1.87	0.55
1:A:662:GLY:HA2	4:A:701:DIF:C13	2.31	0.46
1:A:513:ASP:O	1:A:516:VAL:HG22	2.16	0.45
1:A:663:THR:H	4:A:701:DIF:C14	2.31	0.44
9:A:10:MAN:H3	9:A:11:MAN:O2	2.18	0.43
1:A:636:THR:HA	1:A:643:ASP:OD2	2.18	0.42
9:A:10:MAN:H3	9:A:11:MAN:C2	2.49	0.42
1:A:665:TYR:CZ	1:A:669:ILE:HD11	2.54	0.42
1:A:624:ASN:HB3	1:A:628:LYS:HB2	2.02	0.42
1:A:634:SER:O	1:A:635:GLU:HB2	2.19	0.41
1:A:566:ARG:HG2	1:A:581:VAL:CG2	2.50	0.41

There are no symmetry-related clashes.

5.3 Torsion angles

5.3.1 Protein backbone

In the following table, the Percentiles column shows the percent Ramachandran outliers of the chain as a percentile score with respect to all X-ray entries followed by that with respect to entries of similar resolution.

The Analysed column shows the number of residues for which the backbone conformation was analysed, and the total number of residues.

Mol	Chain	Analysed	Favoured	Allowed	Outliers	Percentiles
1	A	338/345 (98%)	325 (96%)	12 (4%)	1 (0%)	44 18

All (1) Ramachandran outliers are listed below:

Mol	Chain	Res	Type
1	A	543	VAL

5.3.2 Protein sidechains [i](#)

In the following table, the Percentiles column shows the percent sidechain outliers of the chain as a percentile score with respect to all X-ray entries followed by that with respect to entries of similar resolution.

The Analysed column shows the number of residues for which the sidechain conformation was analysed, and the total number of residues.

Mol	Chain	Analysed	Rotameric	Outliers	Percentiles	
1	A	283/286 (99%)	280 (99%)	3 (1%)	78	54

All (3) residues with a non-rotameric sidechain are listed below:

Mol	Chain	Res	Type
1	A	418	SER
1	A	419	LYS
1	A	682	GLU

Some sidechains can be flipped to improve hydrogen bonding and reduce clashes. All (1) such sidechains are listed below:

Mol	Chain	Res	Type
1	A	489	GLN

5.3.3 RNA [i](#)

There are no RNA molecules in this entry.

5.4 Non-standard residues in protein, DNA, RNA chains [i](#)

There are no non-standard protein/DNA/RNA residues in this entry.

5.5 Carbohydrates [i](#)

13 carbohydrates are modelled in this entry.

In the following table, the Counts columns list the number of bonds (or angles) for which Mogul statistics could be retrieved, the number of bonds (or angles) that are observed in the model and the number of bonds (or angles) that are defined in the chemical component dictionary. The Link column lists molecule types, if any, to which the group is linked. The Z score for a bond length (or angle) is the number of standard deviations the observed value is removed from the expected

value. A bond length (or angle) with $|Z| > 2$ is considered an outlier worth inspection. RMSZ is the root-mean-square of all Z scores of the bond lengths (or angles).

Mol	Type	Chain	Res	Link	Bond lengths			Bond angles		
					Counts	RMSZ	# Z > 2	Counts	RMSZ	# Z > 2
9	MAN	A	10	9	11,11,12	0.94	0	13,15,17	3.08	4 (30%)
9	MAN	A	11	9	11,11,12	1.19	1 (9%)	13,15,17	3.06	8 (61%)
9	MAN	A	12	9	11,11,12	0.71	0	13,15,17	2.78	5 (38%)
9	MAN	A	13	9	11,11,12	1.42	2 (18%)	13,15,17	4.45	7 (53%)
8	NAG	A	3	1,8	14,14,15	0.51	0	15,19,21	0.78	1 (6%)
8	NAG	A	4	8	14,14,15	1.71	3 (21%)	15,19,21	2.28	6 (40%)
8	MAN	A	5	8	11,11,12	0.73	0	13,15,17	2.69	6 (46%)
8	MAN	A	6	8	11,11,12	0.67	0	13,15,17	1.17	1 (7%)
7	NAG	A	690	1,7	14,14,15	0.60	0	15,19,21	1.15	1 (6%)
7	NAG	A	691	7	14,14,15	0.58	0	15,19,21	1.33	3 (20%)
8	MAN	A	7	8	11,11,12	0.81	0	13,15,17	2.17	3 (23%)
9	NAG	A	8	1,9	14,14,15	0.62	0	15,19,21	1.21	1 (6%)
9	NAG	A	9	9	14,14,15	0.81	0	15,19,21	2.16	4 (26%)

In the following table, the Chirals column lists the number of chiral outliers, the number of chiral centers analysed, the number of these observed in the model and the number defined in the chemical component dictionary. Similar counts are reported in the Torsion and Rings columns. '-' means no outliers of that kind were identified.

Mol	Type	Chain	Res	Link	Chirals	Torsions	Rings
9	MAN	A	10	9	-	0/2/19/22	0/1/1/1
9	MAN	A	11	9	1/1/4/5	0/2/19/22	0/1/1/1
9	MAN	A	12	9	1/1/4/5	0/2/19/22	0/1/1/1
9	MAN	A	13	9	1/1/4/5	0/2/19/22	0/1/1/1
8	NAG	A	3	1,8	-	0/6/23/26	0/1/1/1
8	NAG	A	4	8	-	0/6/23/26	0/1/1/1
8	MAN	A	5	8	-	0/2/19/22	0/1/1/1
8	MAN	A	6	8	1/1/4/5	0/2/19/22	0/1/1/1
7	NAG	A	690	1,7	-	0/6/23/26	0/1/1/1
7	NAG	A	691	7	-	0/6/23/26	0/1/1/1
8	MAN	A	7	8	1/1/4/5	0/2/19/22	0/1/1/1
9	NAG	A	8	1,9	-	0/6/23/26	0/1/1/1
9	NAG	A	9	9	-	0/6/23/26	0/1/1/1

All (6) bond length outliers are listed below:

Mol	Chain	Res	Type	Atoms	Z	Observed(Å)	Ideal(Å)
8	A	4	NAG	O5-C1	-4.66	1.36	1.43
9	A	11	MAN	O5-C1	-2.91	1.38	1.43

Continued on next page...

Continued from previous page...

Mol	Chain	Res	Type	Atoms	Z	Observed(Å)	Ideal(Å)
9	A	13	MAN	O4-C4	-2.61	1.36	1.43
8	A	4	NAG	O7-C7	-2.26	1.18	1.23
9	A	13	MAN	O5-C5	-2.09	1.39	1.43
8	A	4	NAG	C2-N2	-2.07	1.42	1.46

All (50) bond angle outliers are listed below:

Mol	Chain	Res	Type	Atoms	Z	Observed(°)	Ideal(°)
9	A	13	MAN	O4-C4-C3	-7.51	94.01	110.36
9	A	11	MAN	O5-C1-C2	-7.03	99.78	110.79
9	A	10	MAN	C1-C2-C3	-6.92	100.88	109.65
8	A	7	MAN	C1-O5-C5	-5.23	104.96	112.17
9	A	9	NAG	C4-C3-C2	-4.76	104.04	111.02
9	A	10	MAN	C2-C3-C4	-4.33	103.32	110.88
9	A	12	MAN	O2-C2-C1	-4.14	100.77	109.18
9	A	9	NAG	C6-C5-C4	-4.07	103.47	113.00
8	A	5	MAN	C3-C4-C5	-4.06	103.06	110.22
9	A	13	MAN	O4-C4-C5	-3.89	99.48	109.28
9	A	9	NAG	O4-C4-C5	-3.25	101.11	109.28
9	A	8	NAG	O5-C1-C2	-3.23	106.97	111.47
7	A	690	NAG	O5-C1-C2	-3.12	107.13	111.47
8	A	7	MAN	C1-C2-C3	-3.05	105.78	109.65
7	A	691	NAG	O6-C6-C5	-2.98	101.32	111.34
7	A	691	NAG	C6-C5-C4	-2.73	106.60	113.00
9	A	11	MAN	O3-C3-C2	-2.61	105.28	110.02
9	A	12	MAN	O3-C3-C2	-2.52	105.43	110.02
9	A	11	MAN	C6-C5-C4	-2.42	107.33	113.00
8	A	4	NAG	O7-C7-C8	-2.40	117.69	122.06
8	A	4	NAG	O3-C3-C2	-2.39	104.27	109.39
8	A	4	NAG	C3-C4-C5	-2.27	106.22	110.22
8	A	6	MAN	O5-C1-C2	-2.16	107.41	110.79
8	A	3	NAG	O5-C1-C2	-2.10	108.55	111.47
9	A	11	MAN	O2-C2-C1	-2.01	105.10	109.18
9	A	12	MAN	C2-C3-C4	2.11	114.55	110.88
9	A	11	MAN	C1-C2-C3	2.22	112.46	109.65
7	A	691	NAG	C1-O5-C5	2.29	115.33	112.17
9	A	11	MAN	O4-C4-C5	2.41	115.36	109.28
8	A	5	MAN	O3-C3-C2	2.55	114.67	110.02
8	A	4	NAG	O4-C4-C3	2.77	116.39	110.36
9	A	11	MAN	O6-C6-C5	2.80	120.78	111.34
9	A	10	MAN	O5-C1-C2	2.93	115.39	110.79
9	A	9	NAG	O4-C4-C3	3.28	117.49	110.36

Continued on next page...

Continued from previous page...

Mol	Chain	Res	Type	Atoms	Z	Observed(°)	Ideal(°)
8	A	5	MAN	O4-C4-C5	3.42	117.91	109.28
8	A	5	MAN	C1-O5-C5	3.49	116.98	112.17
8	A	4	NAG	C2-N2-C7	3.81	128.50	122.94
8	A	5	MAN	O5-C1-C2	3.84	116.81	110.79
9	A	12	MAN	C3-C4-C5	3.92	117.13	110.22
9	A	13	MAN	O3-C3-C2	4.14	117.56	110.02
8	A	7	MAN	C3-C4-C5	4.21	117.64	110.22
8	A	5	MAN	C1-C2-C3	4.75	115.67	109.65
9	A	11	MAN	C1-O5-C5	5.25	119.40	112.17
9	A	13	MAN	C2-C3-C4	5.32	120.15	110.88
8	A	4	NAG	C1-O5-C5	5.40	119.61	112.17
9	A	13	MAN	O5-C1-C2	5.71	119.73	110.79
9	A	10	MAN	C1-O5-C5	6.41	121.00	112.17
9	A	13	MAN	C1-O5-C5	6.70	121.40	112.17
9	A	12	MAN	C1-C2-C3	6.84	118.32	109.65
9	A	13	MAN	C3-C4-C5	7.51	123.45	110.22

All (5) chirality outliers are listed below:

Mol	Chain	Res	Type	Atom
9	A	13	MAN	C1
8	A	6	MAN	C1
9	A	12	MAN	C1
9	A	11	MAN	C1
8	A	7	MAN	C1

There are no torsion outliers.

There are no ring outliers.

2 monomers are involved in 2 short contacts:

Mol	Chain	Res	Type	Clashes	Symm-Clashes
9	A	10	MAN	2	0
9	A	11	MAN	2	0

5.6 Ligand geometry

Of 8 ligands modelled in this entry, 3 are monoatomic - leaving 5 for Mogul analysis.

In the following table, the Counts columns list the number of bonds (or angles) for which Mogul statistics could be retrieved, the number of bonds (or angles) that are observed in the model and the number of bonds (or angles) that are defined in the chemical component dictionary. The Link

column lists molecule types, if any, to which the group is linked. The Z score for a bond length (or angle) is the number of standard deviations the observed value is removed from the expected value. A bond length (or angle) with $|Z| > 2$ is considered an outlier worth inspection. RMSZ is the root-mean-square of all Z scores of the bond lengths (or angles).

Mol	Type	Chain	Res	Link	Bond lengths			Bond angles		
					Counts	RMSZ	# $ Z > 2$	Counts	RMSZ	# $ Z > 2$
5	SO4	A	1	-	4,4,4	0.16	0	6,6,6	0.10	0
5	SO4	A	2	-	4,4,4	0.16	0	6,6,6	0.09	0
3	CO3	A	687	2	0,3,3	0.00	-	0,3,3	0.00	-
4	DIF	A	701	-	17,20,20	0.85	1 (5%)	24,27,27	2.27	6 (25%)
10	EOH	A	703	-	2,2,2	0.44	0	1,1,1	0.17	0

In the following table, the Chirals column lists the number of chiral outliers, the number of chiral centers analysed, the number of these observed in the model and the number defined in the chemical component dictionary. Similar counts are reported in the Torsion and Rings columns. '-' means no outliers of that kind were identified.

Mol	Type	Chain	Res	Link	Chirals	Torsions	Rings
5	SO4	A	1	-	-	0/0/0/0	0/0/0/0
5	SO4	A	2	-	-	0/0/0/0	0/0/0/0
3	CO3	A	687	2	-	0/0/0/0	0/0/0/0
4	DIF	A	701	-	-	0/6/8/8	0/2/2/2
10	EOH	A	703	-	-	0/0/0/0	0/0/0/0

All (1) bond length outliers are listed below:

Mol	Chain	Res	Type	Atoms	Z	Observed(Å)	Ideal(Å)
4	A	701	DIF	C13-C7	2.52	1.57	1.52

All (6) bond angle outliers are listed below:

Mol	Chain	Res	Type	Atoms	Z	Observed(°)	Ideal(°)
4	A	701	DIF	C7-C8-N1	-3.49	116.00	118.58
4	A	701	DIF	C4-C3-N1	-3.48	117.04	122.03
4	A	701	DIF	C13-C7-C12	2.13	124.00	120.46
4	A	701	DIF	C3-C2-CL2	3.21	123.10	119.29
4	A	701	DIF	C14-C13-C7	5.34	127.14	114.71
4	A	701	DIF	C3-N1-C8	5.96	135.76	123.00

There are no chirality outliers.

There are no torsion outliers.

There are no ring outliers.

1 monomer is involved in 4 short contacts:

Mol	Chain	Res	Type	Clashes	Symm-Clashes
4	A	701	DIF	4	0

5.7 Other polymers [i](#)

There are no such residues in this entry.

5.8 Polymer linkage issues [i](#)

There are no chain breaks in this entry.

6 Fit of model and data ⓘ

6.1 Protein, DNA and RNA chains ⓘ

In the following table, the column labelled ‘#RSRZ> 2’ contains the number (and percentage) of RSRZ outliers, followed by percent RSRZ outliers for the chain as percentile scores relative to all X-ray entries and entries of similar resolution. The OWAB column contains the minimum, median, 95th percentile and maximum values of the occupancy-weighted average B-factor per residue. The column labelled ‘Q< 0.9’ lists the number of (and percentage) of residues with an average occupancy less than 0.9.

Mol	Chain	Analysed	<RSRZ>	#RSRZ>2	OWAB(Å ²)	Q<0.9
1	A	341/345 (98%)	0.76	36 (10%) 7 7	9, 17, 32, 44	0

All (36) RSRZ outliers are listed below:

Mol	Chain	Res	Type	RSRZ
1	A	681	LEU	17.7
1	A	682	GLU	8.3
1	A	420	HIS	8.0
1	A	423	LEU	6.3
1	A	636	THR	5.8
1	A	342	TYR	5.4
1	A	422	SER	5.4
1	A	635	GLU	4.3
1	A	510	GLN	4.3
1	A	418	SER	3.7
1	A	676	SER	3.7
1	A	627	ASP	3.6
1	A	509	ASP	3.6
1	A	686	PHE	3.5
1	A	419	LYS	3.5
1	A	559	ASP	3.3
1	A	416	LYS	3.3
1	A	621	ASN	3.3
1	A	685	ALA	2.9
1	A	421	SER	2.9
1	A	558	ALA	2.8
1	A	417	SER	2.8
1	A	628	LYS	2.8
1	A	683	ALA	2.7
1	A	363	GLN	2.7
1	A	428	ARG	2.3
1	A	557	THR	2.3

Continued on next page...

Continued from previous page...

Mol	Chain	Res	Type	RSRZ
1	A	429	PRO	2.2
1	A	684	CYS	2.2
1	A	626	PRO	2.2
1	A	515	CYS	2.2
1	A	664	GLU	2.2
1	A	424	ASP	2.2
1	A	675	CYS	2.1
1	A	634	SER	2.1
1	A	609	GLN	2.1

6.2 Non-standard residues in protein, DNA, RNA chains [i](#)

There are no non-standard protein/DNA/RNA residues in this entry.

6.3 Carbohydrates [i](#)

In the following table, the Atoms column lists the number of modelled atoms in the group and the number defined in the chemical component dictionary. LLDF column lists the quality of electron density of the group with respect to its neighbouring residues in protein, DNA or RNA chains. The B-factors column lists the minimum, median, 95th percentile and maximum values of B factors of atoms in the group. The column labelled 'Q < 0.9' lists the number of atoms with occupancy less than 0.9.

Mol	Type	Chain	Res	Atoms	RSCC	RSR	LLDF	B-factors(Å ²)	Q<0.9
7	NAG	A	690	14/15	0.81	0.18	0.74	27,29,32,36	0
8	NAG	A	3	14/15	0.72	0.14	0.22	33,35,37,41	0
9	NAG	A	8	14/15	0.91	0.09	-0.47	22,25,27,30	0
9	MAN	A	10	11/12	0.38	0.47	-	48,51,53,56	0
9	MAN	A	13	11/12	0.36	0.76	-	70,70,70,70	0
8	MAN	A	6	11/12	0.46	0.80	-	61,62,62,62	0
8	NAG	A	4	14/15	0.75	0.20	-	44,46,49,52	0
9	MAN	A	11	11/12	0.43	0.55	-	59,61,62,64	0
7	NAG	A	691	14/15	0.57	0.50	-	39,42,43,43	0
8	MAN	A	7	11/12	0.30	0.69	-	62,63,63,63	0
9	MAN	A	12	11/12	0.39	0.61	-	66,67,68,69	0
8	MAN	A	5	11/12	0.49	0.51	-	55,58,60,61	0
9	NAG	A	9	14/15	0.86	0.13	-	34,36,40,44	0

6.4 Ligands [i](#)

In the following table, the Atoms column lists the number of modelled atoms in the group and the number defined in the chemical component dictionary. LLDF column lists the quality of electron density of the group with respect to its neighbouring residues in protein, DNA or RNA chains. The B-factors column lists the minimum, median, 95th percentile and maximum values of B factors of atoms in the group. The column labelled 'Q< 0.9' lists the number of atoms with occupancy less than 0.9.

Mol	Type	Chain	Res	Atoms	RSCC	RSR	LLDF	B-factors(Å ²)	Q<0.9
4	DIF	A	701	19/19	0.27	0.51	16.45	70,71,71,72	0
3	CO3	A	687	4/4	0.98	0.12	0.29	10,10,10,11	0
6	ZN	A	688	1/1	0.99	0.07	-1.13	14,14,14,14	0
2	FE	A	999	1/1	1.00	0.09	-4.06	9,9,9,9	0
10	EOH	A	703	3/3	0.81	0.13	-	47,47,47,47	0
5	SO4	A	2	5/5	0.92	0.22	-	45,45,45,45	0
5	SO4	A	1	5/5	0.98	0.09	-	28,29,29,30	0
6	ZN	A	689	1/1	0.98	0.06	-	17,17,17,17	0

6.5 Other polymers [i](#)

There are no such residues in this entry.