



# Full wwPDB X-ray Structure Validation Report ⓘ

Nov 6, 2017 – 03:26 PM EST

PDB ID : 4ICL  
Title : HIV-1 reverse transcriptase with bound fragment at the incoming dNTP binding site  
Authors : Bauman, J.D.; Patel, D.; Arnold, E.  
Deposited on : unknown  
Resolution : 1.80 Å(reported)

This is a Full wwPDB X-ray Structure Validation Report for a publicly released PDB entry.

We welcome your comments at [validation@mail.wwpdb.org](mailto:validation@mail.wwpdb.org)

A user guide is available at

<http://wwpdb.org/validation/2016/XrayValidationReportHelp>

with specific help available everywhere you see the ⓘ symbol.

---

The following versions of software and data (see [references ⓘ](#)) were used in the production of this report:

MolProbity : 4.02b-467  
Mogul : 1.7.2 (RC1), CSD as538be (2017)  
Xtriage (Phenix) : 1.9-1692  
EDS : rb-20030345  
Percentile statistics : 20161228.v01 (using entries in the PDB archive December 28th 2016)  
Refmac : 5.8.0135  
CCP4 : 6.5.0  
Ideal geometry (proteins) : Engh & Huber (2001)  
Ideal geometry (DNA, RNA) : Parkinson et al. (1996)  
Validation Pipeline (wwPDB-VP) : rb-20030345

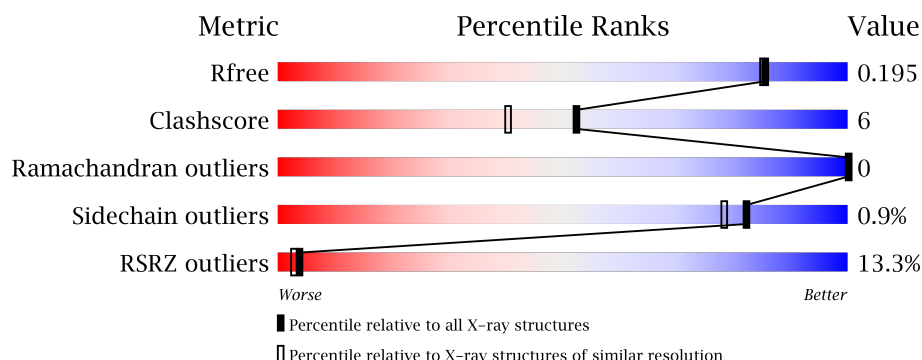
# 1 Overall quality at a glance

The following experimental techniques were used to determine the structure:

## *X-RAY DIFFRACTION*

The reported resolution of this entry is 1.80 Å.

Percentile scores (ranging between 0-100) for global validation metrics of the entry are shown in the following graphic. The table shows the number of entries on which the scores are based.



Metric	Whole archive (#Entries)	Similar resolution (#Entries, resolution range(Å))
$R_{free}$	100719	4827 (1.80-1.80)
Clashscore	112137	5742 (1.80-1.80)
Ramachandran outliers	110173	5676 (1.80-1.80)
Sidechain outliers	110143	5675 (1.80-1.80)
RSRZ outliers	101464	4906 (1.80-1.80)

The table below summarises the geometric issues observed across the polymeric chains and their fit to the electron density. The red, orange, yellow and green segments on the lower bar indicate the fraction of residues that contain outliers for  $\geq 3$ , 2, 1 and 0 types of geometric quality criteria. A grey segment represents the fraction of residues that are not modelled. The numeric value for each fraction is indicated below the corresponding segment, with a dot representing fractions  $\leq 5\%$ . The upper red bar (where present) indicates the fraction of residues that have poor fit to the electron density. The numeric value is given above the bar.

Mol	Chain	Length	Quality of chain
1	A	557	<div> <div>10%</div> <div>92%</div> <div>8%</div> </div>
2	B	429	<div> <div>18%</div> <div>83%</div> <div>12%</div> <div>••</div> </div>

The following table lists non-polymeric compounds, carbohydrate monomers and non-standard residues in protein, DNA, RNA chains that are outliers for geometric or electron-density-fit criteria:

Mol	Type	Chain	Res	Chirality	Geometry	Clashes	Electron density
4	MG	A	602	-	-	-	X
5	DMS	A	603	-	-	-	X
5	DMS	A	604	-	-	X	-
5	DMS	B	501	-	-	-	X
5	DMS	B	503	-	-	-	X
5	DMS	B	505	-	-	X	-
5	DMS	B	506	-	-	-	X

## 2 Entry composition

There are 7 unique types of molecules in this entry. The entry contains 17737 atoms, of which 9009 are hydrogens and 0 are deuteriums.

In the tables below, the ZeroOcc column contains the number of atoms modelled with zero occupancy, the AltConf column contains the number of residues with at least one atom in alternate conformation and the Trace column contains the number of residues modelled with at most 2 atoms.

- Molecule 1 is a protein called Reverse transcriptase/ribonuclease H.

Mol	Chain	Residues	Atoms						ZeroOcc	AltConf	Trace
			Total	C	H	N	O	S			
1	A	556	9127	2932	4596	753	838	8	0	3	0

There are 5 discrepancies between the modelled and reference sequences:

Chain	Residue	Modelled	Actual	Comment	Reference
A	-1	MET	-	EXPRESSION TAG	UNP P03366
A	0	VAL	-	EXPRESSION TAG	UNP P03366
A	172	ALA	LYS	ENGINEERED MUTATION	UNP P03366
A	173	ALA	LYS	ENGINEERED MUTATION	UNP P03366
A	280	SER	CYS	ENGINEERED MUTATION	UNP P03366

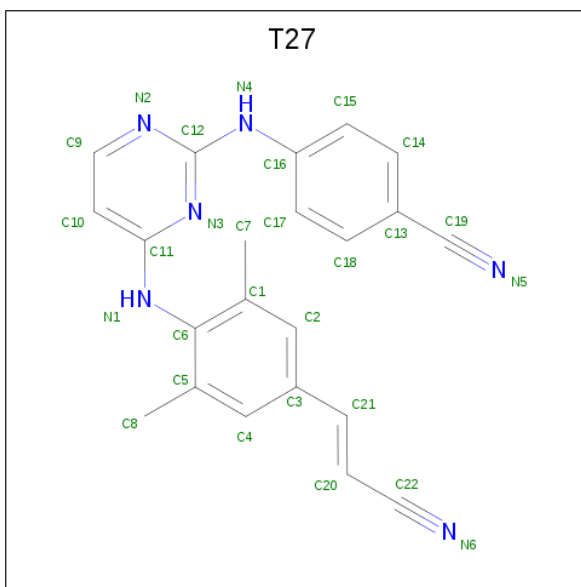
- Molecule 2 is a protein called p51 RT.

Mol	Chain	Residues	Atoms						ZeroOcc	AltConf	Trace
			Total	C	H	N	O	S			
2	B	412	6874	2228	3455	565	619	7	0	2	0

There are 2 discrepancies between the modelled and reference sequences:

Chain	Residue	Modelled	Actual	Comment	Reference
B	0	GLY	-	EXPRESSION TAG	UNP P03366
B	280	SER	CYS	ENGINEERED MUTATION	UNP P03366

- Molecule 3 is 4-{{4-({4-[(E)-2-cyanoethenyl]-2,6-dimethylphenyl}amino)pyrimidin-2-yl}amino}benzonitrile (three-letter code: T27) (formula: C<sub>22</sub>H<sub>18</sub>N<sub>6</sub>).

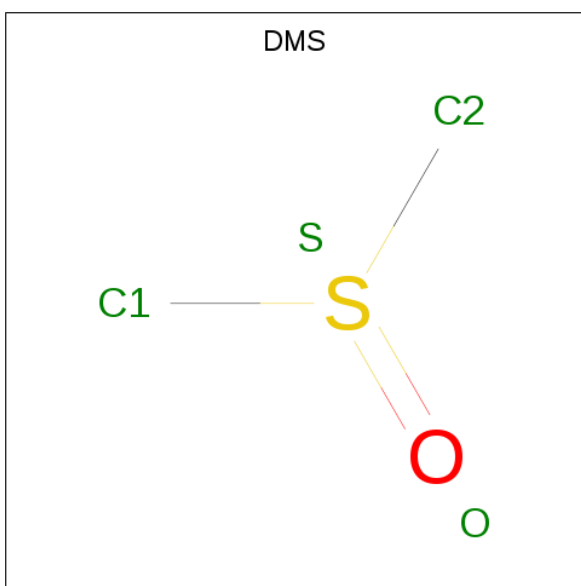


Mol	Chain	Residues	Atoms				ZeroOcc	AltConf
3	A	1	Total	C	H	N	0	0
			46	22	18	6		

- Molecule 4 is MAGNESIUM ION (three-letter code: MG) (formula: Mg).

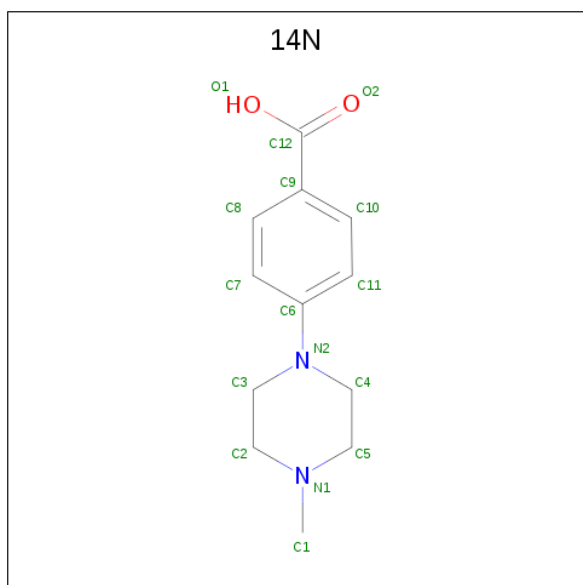
Mol	Chain	Residues	Atoms		ZeroOcc	AltConf
4	A	1	Total	Mg	0	0
			1	1		

- Molecule 5 is DIMETHYL SULFOXIDE (three-letter code: DMS) (formula: C<sub>2</sub>H<sub>6</sub>OS).



Mol	Chain	Residues	Atoms	ZeroOcc	AltConf
5	A	1	Total C O S 4 2 1 1	0	0
5	A	1	Total C O S 4 2 1 1	0	0
5	A	1	Total C O S 4 2 1 1	0	0
5	A	1	Total C O S 4 2 1 1	0	0
5	B	1	Total C O S 4 2 1 1	0	0
5	B	1	Total C O S 4 2 1 1	0	0
5	B	1	Total C O S 4 2 1 1	0	0
5	B	1	Total C O S 4 2 1 1	0	0
5	B	1	Total C O S 4 2 1 1	0	0
5	B	1	Total C O S 4 2 1 1	0	0
5	B	1	Total C O S 4 2 1 1	0	0

- Molecule 6 is 4-(4-methylpiperazin-1-yl)benzoic acid (three-letter code: 14N) (formula:  $C_{12}H_{16}N_2O_2$ ).



Mol	Chain	Residues	Atoms				ZeroOcc	AltConf
6	A	1	Total	C	N	O	0	0
			16	12	2	2		

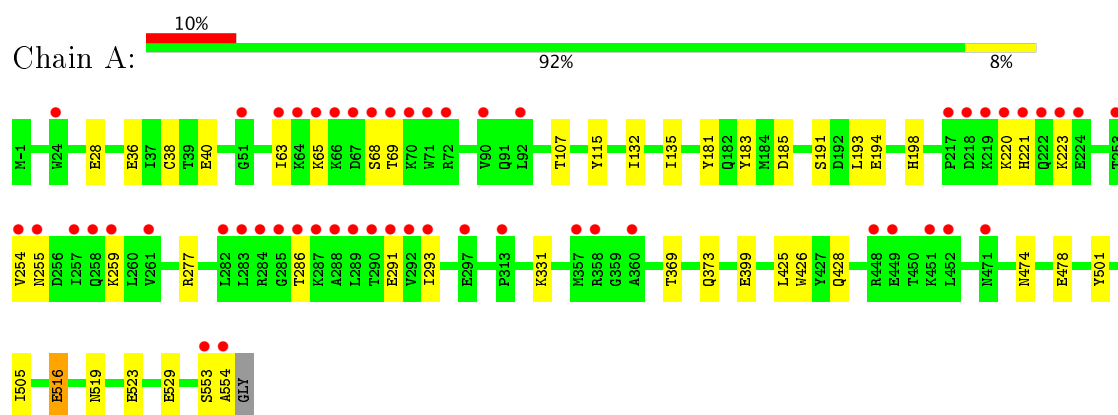
- Molecule 7 is water.

Mol	Chain	Residues	Atoms			ZeroOcc	AltConf
7	A	429	Total	H	O	0	0
			1013	584	429		
7	B	260	Total	H	O	0	0
			616	356	260		

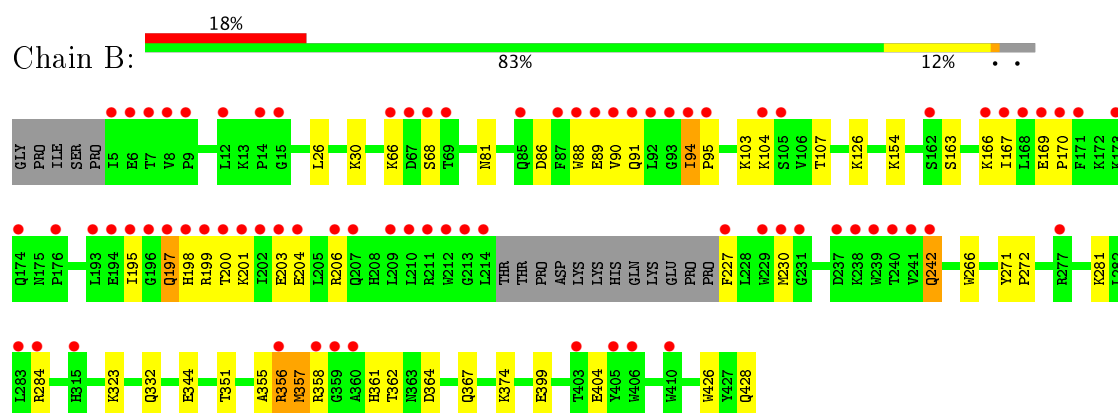
### 3 Residue-property plots [i](#)

These plots are drawn for all protein, RNA and DNA chains in the entry. The first graphic for a chain summarises the proportions of the various outlier classes displayed in the second graphic. The second graphic shows the sequence view annotated by issues in geometry and electron density. Residues are color-coded according to the number of geometric quality criteria for which they contain at least one outlier: green = 0, yellow = 1, orange = 2 and red = 3 or more. A red dot above a residue indicates a poor fit to the electron density ( $RSRZ > 2$ ). Stretches of 2 or more consecutive residues without any outlier are shown as a green connector. Residues present in the sample, but not in the model, are shown in grey.

- Molecule 1: Reverse transcriptase/ribonuclease H



- Molecule 2: p51 RT





## 4 Data and refinement statistics

Property	Value	Source
Space group	C 1 2 1	Depositor
Cell constants a, b, c, $\alpha$ , $\beta$ , $\gamma$	163.05Å 72.65Å 109.48Å 90.00° 100.85° 90.00°	Depositor
Resolution (Å)	38.00 – 1.80 38.00 – 1.80	Depositor EDS
% Data completeness (in resolution range)	98.4 (38.00-1.80) 90.7 (38.00-1.80)	Depositor EDS
$R_{merge}$	0.07	Depositor
$R_{sym}$	(Not available)	Depositor
$\langle I/\sigma(I) \rangle$ <sup>1</sup>	2.20 (at 1.79Å)	Xtriage
Refinement program	PHENIX (phenix.refine: 1.8_1069)	Depositor
R, $R_{free}$	0.179 , 0.199 0.176 , 0.195	Depositor DCC
$R_{free}$ test set	2122 reflections (2.00%)	DCC
Wilson B-factor (Å <sup>2</sup> )	31.1	Xtriage
Anisotropy	0.194	Xtriage
Bulk solvent $k_{sol}$ (e/Å <sup>3</sup> ), $B_{sol}$ (Å <sup>2</sup> )	0.40 , 41.8	EDS
L-test for twinning <sup>2</sup>	$\langle  L  \rangle = 0.49$ , $\langle L^2 \rangle = 0.33$	Xtriage
Estimated twinning fraction	No twinning to report.	Xtriage
$F_o, F_c$ correlation	0.96	EDS
Total number of atoms	17737	wwPDB-VP
Average B, all atoms (Å <sup>2</sup> )	51.0	wwPDB-VP

Xtriage's analysis on translational NCS is as follows: *The largest off-origin peak in the Patterson function is 4.18% of the height of the origin peak. No significant pseudotranslation is detected.*

<sup>1</sup>Intensities estimated from amplitudes.

<sup>2</sup>Theoretical values of  $\langle |L| \rangle$ ,  $\langle L^2 \rangle$  for acentric reflections are 0.5, 0.333 respectively for untwinned datasets, and 0.375, 0.2 for perfectly twinned datasets.

## 5 Model quality [i](#)

### 5.1 Standard geometry [i](#)

Bond lengths and bond angles in the following residue types are not validated in this section: 14N, MG, DMS, T27

The Z score for a bond length (or angle) is the number of standard deviations the observed value is removed from the expected value. A bond length (or angle) with  $|Z| > 5$  is considered an outlier worth inspection. RMSZ is the root-mean-square of all Z scores of the bond lengths (or angles).

Mol	Chain	Bond lengths		Bond angles	
		RMSZ	# Z  >5	RMSZ	# Z  >5
1	A	0.64	0/4661	0.69	0/6334
2	B	0.61	0/3525	0.70	1/4787 (0.0%)
All	All	0.63	0/8186	0.69	1/11121 (0.0%)

There are no bond length outliers.

All (1) bond angle outliers are listed below:

Mol	Chain	Res	Type	Atoms	Z	Observed(°)	Ideal(°)
2	B	364	ASP	CB-CA-C	-5.23	99.94	110.40

There are no chirality outliers.

There are no planarity outliers.

### 5.2 Too-close contacts [i](#)

In the following table, the Non-H and H(model) columns list the number of non-hydrogen atoms and hydrogen atoms in the chain respectively. The H(added) column lists the number of hydrogen atoms added and optimized by MolProbity. The Clashes column lists the number of clashes within the asymmetric unit, whereas Symm-Clashes lists symmetry related clashes.

Mol	Chain	Non-H	H(model)	H(added)	Clashes	Symm-Clashes
1	A	4531	4596	4575	41	2
2	B	3419	3455	3437	54	2
3	A	28	18	18	1	0
4	A	1	0	0	0	0
5	A	16	0	24	9	0
5	B	28	0	42	14	0
6	A	16	0	15	4	0
7	A	429	584	0	8	0

*Continued on next page...*

*Continued from previous page...*

Mol	Chain	Non-H	H(model)	H(added)	Clashes	Symm-Clashes
7	B	260	356	0	9	0
All	All	8728	9009	8111	102	2

The all-atom clashscore is defined as the number of clashes found per 1000 atoms (including hydrogen atoms). The all-atom clashscore for this structure is 6.

All (102) close contacts within the same asymmetric unit are listed below, sorted by their clash magnitude.

Atom-1	Atom-2	Interatomic distance (Å)	Clash overlap (Å)
2:B:26:LEU:H	5:B:503:DMS:H13	1.13	1.08
1:A:428:GLN:H	5:A:604:DMS:H22	1.14	1.04
2:B:399:GLU:HB3	5:B:505:DMS:C1	1.90	1.01
2:B:399:GLU:CB	5:B:505:DMS:H12	1.93	0.99
2:B:399:GLU:HB3	5:B:505:DMS:H12	0.96	0.95
5:B:505:DMS:H13	7:B:697:HOH:O	1.71	0.90
1:A:428:GLN:H	5:A:604:DMS:C2	1.89	0.86
5:B:502:DMS:H22	7:B:642:HOH:O	1.78	0.83
5:B:506:DMS:H21	7:B:773:HOH:O	1.79	0.83
1:A:426:TRP:H	5:A:603:DMS:H23	1.45	0.82
2:B:227:PHE:N	7:B:764:HOH:O	2.17	0.78
1:A:220:LYS:NZ	7:A:1022:HOH:O	2.16	0.77
2:B:399:GLU:O	5:B:505:DMS:H11	1.84	0.77
2:B:166:LYS:O	2:B:169:GLU:OE1	2.04	0.75
2:B:361:HIS:O	7:B:841:HOH:O	2.04	0.74
1:A:255:ASN:OD1	1:A:259:LYS:NZ	2.21	0.72
1:A:107:THR:OG1	1:A:198:HIS:HE1	1.75	0.70
1:A:69:THR:O	1:A:69:THR:HG22	1.92	0.69
2:B:26:LEU:N	5:B:503:DMS:H13	1.98	0.68
1:A:193:LEU:O	7:A:1031:HOH:O	2.12	0.68
1:A:428:GLN:N	5:A:604:DMS:H22	1.99	0.67
2:B:332:GLN:OE1	2:B:428:GLN:HG2	1.96	0.66
1:A:426:TRP:H	5:A:603:DMS:C2	2.11	0.64
2:B:169:GLU:CD	2:B:170:PRO:HD3	2.18	0.63
1:A:254:VAL:HG23	1:A:293:ILE:HD11	1.81	0.62
2:B:362:THR:HA	7:B:841:HOH:O	1.99	0.62
1:A:286:THR:HG21	1:A:291:GLU:OE1	2.00	0.61
2:B:197:GLN:O	2:B:201:LYS:HG2	2.02	0.60
2:B:195:ILE:HD11	2:B:199:ARG:CZ	2.31	0.60
2:B:66:LYS:HE2	2:B:358:ARG:HD2	1.84	0.60
1:A:474:ASN:HB2	5:A:606:DMS:H11	1.83	0.59
1:A:553:SER:O	1:A:554:ALA:CB	2.50	0.59

*Continued on next page...*

*Continued from previous page...*

Atom-1	Atom-2	Interatomic distance (Å)	Clash overlap (Å)
1:A:293:ILE:HD12	1:A:293:ILE:N	2.18	0.58
2:B:68:SER:HB2	2:B:230:MET:CE	2.34	0.57
1:A:553:SER:O	1:A:554:ALA:HB2	2.03	0.57
2:B:356:ARG:CD	2:B:356:ARG:H	2.17	0.57
1:A:516:GLU:H	1:A:516:GLU:CD	2.08	0.56
1:A:69:THR:O	1:A:69:THR:CG2	2.53	0.56
1:A:63:ILE:HG13	1:A:63:ILE:O	2.06	0.56
1:A:428:GLN:N	5:A:604:DMS:C2	2.64	0.56
2:B:169:GLU:N	2:B:170:PRO:HD2	2.21	0.56
2:B:68:SER:HB2	2:B:230:MET:HE2	1.89	0.55
3:A:601:T27:H17	3:A:601:T27:N3	2.23	0.54
1:A:185:ASP:OD2	6:A:607:14N:H10	2.08	0.54
1:A:478:GLU:HG2	7:A:905:HOH:O	2.09	0.52
5:B:502:DMS:C2	7:B:642:HOH:O	2.45	0.52
2:B:169:GLU:OE1	2:B:170:PRO:HD3	2.10	0.52
2:B:81:ASN:O	2:B:154:LYS:HE2	2.09	0.52
2:B:88:TRP:HA	2:B:91:GLN:O	2.10	0.51
2:B:356:ARG:HD3	2:B:374:LYS:NZ	2.26	0.50
1:A:373[A]:GLN:NE2	7:A:939:HOH:O	2.14	0.50
2:B:356:ARG:H	2:B:356:ARG:HD2	1.77	0.50
2:B:195:ILE:HD11	2:B:199:ARG:NH2	2.27	0.49
2:B:357:MET:HB3	2:B:367:GLN:HG2	1.94	0.49
1:A:65:LYS:O	1:A:68:SER:HB3	2.13	0.48
2:B:355:ALA:H	2:B:356:ARG:HE	1.61	0.48
2:B:94:ILE:O	2:B:95:PRO:C	2.51	0.48
1:A:40:GLU:HG2	7:A:1115:HOH:O	2.12	0.48
2:B:169:GLU:HG2	2:B:170:PRO:N	2.29	0.48
2:B:86:ASP:HB3	2:B:88:TRP:CZ2	2.50	0.47
1:A:425:LEU:HA	5:A:603:DMS:H22	1.94	0.47
2:B:89:GLU:HG3	2:B:90:VAL:HG23	1.97	0.47
5:B:506:DMS:C2	7:B:773:HOH:O	2.49	0.47
2:B:107:THR:OG1	2:B:198:HIS:CE1	2.67	0.47
1:A:181:TYR:CE2	1:A:183:TYR:HB2	2.50	0.46
1:A:185:ASP:OD2	6:A:607:14N:H4	2.16	0.46
1:A:254:VAL:CG2	1:A:293:ILE:HD11	2.46	0.45
1:A:516:GLU:N	1:A:516:GLU:CD	2.70	0.45
2:B:163:SER:O	2:B:167:ILE:HG13	2.16	0.45
1:A:519:ASN:O	1:A:523:GLU:HG2	2.16	0.45
2:B:356:ARG:H	2:B:356:ARG:NE	2.15	0.45
1:A:369:THR:O	1:A:373[B]:GLN:HG2	2.16	0.45
2:B:26:LEU:O	5:B:503:DMS:H23	2.17	0.45

*Continued on next page...*

Continued from previous page...

Atom-1	Atom-2	Interatomic distance (Å)	Clash overlap (Å)
1:A:331:LYS:HE2	5:A:605:DMS:H22	2.00	0.44
1:A:28:GLU:HG3	1:A:135:ILE:HD12	1.99	0.44
2:B:356:ARG:NH1	7:B:850:HOH:O	2.40	0.44
2:B:323:LYS:NZ	2:B:344:GLU:OE2	2.45	0.44
1:A:36:GLU:HG3	7:A:995:HOH:O	2.18	0.44
2:B:89:GLU:HG3	2:B:90:VAL:N	2.33	0.44
2:B:201:LYS:O	2:B:204:GLU:HB2	2.18	0.43
1:A:277:ARG:HD3	7:A:1011:HOH:O	2.17	0.43
2:B:227:PHE:HD1	2:B:230:MET:CE	2.31	0.43
2:B:426:TRP:O	5:B:507:DMS:C1	2.66	0.43
1:A:501:TYR:CZ	1:A:505:ILE:HD11	2.53	0.43
2:B:86:ASP:HB3	2:B:88:TRP:CE2	2.54	0.43
2:B:271:TYR:HA	2:B:272:PRO:HD3	1.85	0.43
2:B:107:THR:OG1	2:B:198:HIS:HE1	2.01	0.42
2:B:203:GLU:OE1	2:B:206:ARG:HD2	2.19	0.42
6:A:607:14N:H1	7:A:1058:HOH:O	2.19	0.42
1:A:221:HIS:HD2	1:A:223:LYS:HB2	1.84	0.42
2:B:169:GLU:N	2:B:170:PRO:CD	2.82	0.42
2:B:242:GLN:HB2	2:B:351:THR:OG1	2.20	0.42
2:B:126:LYS:HD3	5:B:502:DMS:C2	2.50	0.41
1:A:191:SER:OG	1:A:198:HIS:HD2	2.03	0.41
2:B:281:LYS:O	2:B:284:ARG:HG3	2.21	0.41
2:B:30:LYS:NZ	2:B:404:GLU:OE2	2.37	0.41
2:B:266:TRP:CG	2:B:426:TRP:CD1	3.09	0.40
2:B:200:THR:O	2:B:204:GLU:HG3	2.21	0.40
1:A:38:CYS:SG	1:A:132:ILE:HD11	2.61	0.40
1:A:115:TYR:CE2	6:A:607:14N:H17	2.56	0.40
2:B:169:GLU:CG	2:B:170:PRO:HD3	2.52	0.40
2:B:103:LYS:HA	2:B:103:LYS:HD3	1.85	0.40

All (2) symmetry-related close contacts are listed below. The label for Atom-2 includes the symmetry operator and encoded unit-cell translations to be applied.

Atom-1	Atom-2	Interatomic distance (Å)	Clash overlap (Å)
1:A:529:GLU:OE2	2:B:104:LYS:HZ1[4_545]	1.40	0.20
1:A:529:GLU:OE2	2:B:104:LYS:NZ[4_545]	2.11	0.09

## 5.3 Torsion angles [i](#)

### 5.3.1 Protein backbone [i](#)

In the following table, the Percentiles column shows the percent Ramachandran outliers of the chain as a percentile score with respect to all X-ray entries followed by that with respect to entries of similar resolution.

The Analysed column shows the number of residues for which the backbone conformation was analysed, and the total number of residues.

Mol	Chain	Analysed	Favoured	Allowed	Outliers	Percentiles	
1	A	557/557 (100%)	545 (98%)	12 (2%)	0	100	100
2	B	410/429 (96%)	398 (97%)	12 (3%)	0	100	100
All	All	967/986 (98%)	943 (98%)	24 (2%)	0	100	100

There are no Ramachandran outliers to report.

### 5.3.2 Protein sidechains [i](#)

In the following table, the Percentiles column shows the percent sidechain outliers of the chain as a percentile score with respect to all X-ray entries followed by that with respect to entries of similar resolution.

The Analysed column shows the number of residues for which the sidechain conformation was analysed, and the total number of residues.

Mol	Chain	Analysed	Rotameric	Outliers	Percentiles	
1	A	498/495 (101%)	495 (99%)	3 (1%)	89	87
2	B	376/390 (96%)	371 (99%)	5 (1%)	73	66
All	All	874/885 (99%)	866 (99%)	8 (1%)	82	78

All (8) residues with a non-rotameric sidechain are listed below:

Mol	Chain	Res	Type
1	A	194	GLU
1	A	399	GLU
1	A	516	GLU
2	B	94	ILE
2	B	197	GLN
2	B	242	GLN
2	B	356	ARG
2	B	357	MET

Some sidechains can be flipped to improve hydrogen bonding and reduce clashes. All (3) such sidechains are listed below:

Mol	Chain	Res	Type
1	A	198	HIS
1	A	221	HIS
2	B	198	HIS

### 5.3.3 RNA [i](#)

There are no RNA molecules in this entry.

## 5.4 Non-standard residues in protein, DNA, RNA chains [i](#)

There are no non-standard protein/DNA/RNA residues in this entry.

## 5.5 Carbohydrates [i](#)

There are no carbohydrates in this entry.

## 5.6 Ligand geometry [i](#)

Of 14 ligands modelled in this entry, 1 is monoatomic - leaving 13 for Mogul analysis.

In the following table, the Counts columns list the number of bonds (or angles) for which Mogul statistics could be retrieved, the number of bonds (or angles) that are observed in the model and the number of bonds (or angles) that are defined in the Chemical Component Dictionary. The Link column lists molecule types, if any, to which the group is linked. The Z score for a bond length (or angle) is the number of standard deviations the observed value is removed from the expected value. A bond length (or angle) with  $|Z| > 2$  is considered an outlier worth inspection. RMSZ is the root-mean-square of all Z scores of the bond lengths (or angles).

Mol	Type	Chain	Res	Link	Bond lengths			Bond angles		
					Counts	RMSZ	# Z  > 2	Counts	RMSZ	# Z  > 2
3	T27	A	601	-	30,30,30	1.09	1 (3%)	38,40,40	1.48	7 (18%)
5	DMS	A	603	-	3,3,3	2.62	1 (33%)	3,3,3	0.49	0
5	DMS	A	604	-	3,3,3	2.82	1 (33%)	3,3,3	0.61	0
5	DMS	A	605	-	3,3,3	2.62	1 (33%)	3,3,3	1.01	0
5	DMS	A	606	-	3,3,3	2.78	1 (33%)	3,3,3	0.76	0
6	14N	A	607	-	14,17,17	3.15	4 (28%)	20,23,23	2.64	8 (40%)
5	DMS	B	501	-	3,3,3	2.67	1 (33%)	3,3,3	0.79	0

Mol	Type	Chain	Res	Link	Bond lengths			Bond angles		
					Counts	RMSZ	# Z  > 2	Counts	RMSZ	# Z  > 2
5	DMS	B	502	-	3,3,3	2.71	1 (33%)	3,3,3	0.82	0
5	DMS	B	503	-	3,3,3	2.70	1 (33%)	3,3,3	1.57	0
5	DMS	B	504	-	3,3,3	2.62	1 (33%)	3,3,3	0.54	0
5	DMS	B	505	-	3,3,3	2.27	1 (33%)	3,3,3	1.26	1 (33%)
5	DMS	B	506	-	3,3,3	2.65	1 (33%)	3,3,3	0.56	0
5	DMS	B	507	-	3,3,3	2.50	1 (33%)	3,3,3	0.78	0

In the following table, the Chirals column lists the number of chiral outliers, the number of chiral centers analysed, the number of these observed in the model and the number defined in the Chemical Component Dictionary. Similar counts are reported in the Torsion and Rings columns. '-' means no outliers of that kind were identified.

Mol	Type	Chain	Res	Link	Chirals	Torsions	Rings
3	T27	A	601	-	-	0/13/14/14	0/3/3/3
5	DMS	A	603	-	-	0/0/0/0	0/0/0/0
5	DMS	A	604	-	-	0/0/0/0	0/0/0/0
5	DMS	A	605	-	-	0/0/0/0	0/0/0/0
5	DMS	A	606	-	-	0/0/0/0	0/0/0/0
6	14N	A	607	-	-	0/4/18/18	0/2/2/2
5	DMS	B	501	-	-	0/0/0/0	0/0/0/0
5	DMS	B	502	-	-	0/0/0/0	0/0/0/0
5	DMS	B	503	-	-	0/0/0/0	0/0/0/0
5	DMS	B	504	-	-	0/0/0/0	0/0/0/0
5	DMS	B	505	-	-	0/0/0/0	0/0/0/0
5	DMS	B	506	-	-	0/0/0/0	0/0/0/0
5	DMS	B	507	-	-	0/0/0/0	0/0/0/0

All (16) bond length outliers are listed below:

Mol	Chain	Res	Type	Atoms	Z	Observed(Å)	Ideal(Å)
6	A	607	14N	C6-N2	2.65	1.46	1.38
3	A	601	T27	C12-N4	3.36	1.42	1.36
5	B	505	DMS	O-S	3.71	1.75	1.50
5	B	507	DMS	O-S	4.18	1.78	1.50
5	B	504	DMS	O-S	4.39	1.80	1.50
5	A	605	DMS	O-S	4.40	1.80	1.50
5	A	603	DMS	O-S	4.44	1.80	1.50
5	B	506	DMS	O-S	4.46	1.80	1.50
5	B	501	DMS	O-S	4.47	1.80	1.50
5	B	503	DMS	O-S	4.48	1.80	1.50
5	B	502	DMS	O-S	4.63	1.81	1.50

*Continued on next page...*



*Continued from previous page...*

Mol	Chain	Res	Type	Atoms	Z	Observed(Å)	Ideal(Å)
5	A	606	DMS	O-S	4.66	1.81	1.50
5	A	604	DMS	O-S	4.77	1.82	1.50
6	A	607	14N	C11-C6	5.45	1.50	1.39
6	A	607	14N	C10-C9	6.54	1.53	1.39
6	A	607	14N	C8-C7	7.28	1.51	1.38

All (16) bond angle outliers are listed below:

Mol	Chain	Res	Type	Atoms	Z	Observed(°)	Ideal(°)
3	A	601	T27	C10-C9-N2	-4.31	118.95	123.92
6	A	607	14N	C2-C3-N2	-3.18	104.42	110.68
3	A	601	T27	C15-C16-N4	-2.41	112.74	120.67
3	A	601	T27	C4-C3-C21	-2.25	113.64	120.61
3	A	601	T27	C7-C1-C6	-2.24	118.56	121.41
6	A	607	14N	C7-C6-N2	-2.19	118.31	121.39
3	A	601	T27	C10-C11-N3	-2.12	119.67	123.21
5	B	505	DMS	O-S-C1	2.08	117.51	106.54
6	A	607	14N	C4-N2-C6	2.08	124.01	118.21
6	A	607	14N	C3-C2-N1	2.22	113.34	110.79
3	A	601	T27	C2-C1-C6	2.35	120.96	118.18
6	A	607	14N	C5-N1-C2	2.40	112.67	109.47
3	A	601	T27	C9-N2-C12	3.52	118.37	115.43
6	A	607	14N	C4-N2-C3	3.75	119.51	111.57
6	A	607	14N	C1-N1-C5	4.78	117.88	110.67
6	A	607	14N	C1-N1-C2	7.97	122.69	110.67

There are no chirality outliers.

There are no torsion outliers.

There are no ring outliers.

11 monomers are involved in 28 short contacts:

Mol	Chain	Res	Type	Clashes	Symm-Clashes
3	A	601	T27	1	0
5	A	603	DMS	3	0
5	A	604	DMS	4	0
5	A	605	DMS	1	0
5	A	606	DMS	1	0
6	A	607	14N	4	0
5	B	502	DMS	3	0
5	B	503	DMS	3	0
5	B	505	DMS	5	0

*Continued on next page...*

*Continued from previous page...*

Mol	Chain	Res	Type	Clashes	Symm-Clashes
5	B	506	DMS	2	0
5	B	507	DMS	1	0

## 5.7 Other polymers [i](#)

There are no such residues in this entry.







## 5.8 Polymer linkage issues [i](#)

There are no chain breaks in this entry.

## 6 Fit of model and data

### 6.1 Protein, DNA and RNA chains

In the following table, the column labelled ‘#RSRZ> 2’ contains the number (and percentage) of RSRZ outliers, followed by percent RSRZ outliers for the chain as percentile scores relative to all X-ray entries and entries of similar resolution. The OWAB column contains the minimum, median, 95<sup>th</sup> percentile and maximum values of the occupancy-weighted average B-factor per residue. The column labelled ‘Q< 0.9’ lists the number of (and percentage) of residues with an average occupancy less than 0.9.

Mol	Chain	Analysed	<RSRZ>	#RSRZ>2	OWAB(Å <sup>2</sup> )	Q<0.9
1	A	556/557 (99%)	0.41	53 (9%)  	21, 37, 82, 151	0
2	B	412/429 (96%)	0.93	76 (18%)  	21, 42, 105, 155	0
All	All	968/986 (98%)	0.63	129 (13%)  	21, 39, 98, 155	0

All (129) RSRZ outliers are listed below:

Mol	Chain	Res	Type	RSRZ
2	B	90	VAL	14.7
2	B	92	LEU	12.6
1	A	220	LYS	12.5
1	A	69	THR	10.0
1	A	219	LYS	9.9
2	B	229	TRP	9.4
2	B	214	LEU	8.9
1	A	67	ASP	8.9
1	A	68	SER	8.7
1	A	221	HIS	8.7
1	A	218	ASP	8.1
1	A	289	LEU	7.9
1	A	287	LYS	7.8
2	B	202	ILE	7.8
2	B	95	PRO	7.8
1	A	286	THR	7.6
2	B	212	TRP	7.5
2	B	89	GLU	7.0
2	B	240	THR	7.0
2	B	200	THR	7.0
1	A	554	ALA	6.8
2	B	91	GLN	6.7
1	A	222	GLN	6.5
2	B	356	ARG	6.2

*Continued on next page...*

*Continued from previous page...*

Mol	Chain	Res	Type	RSRZ
1	A	290	THR	6.2
2	B	210	LEU	6.2
2	B	94	ILE	6.1
1	A	66	LYS	5.9
1	A	288	ALA	5.9
1	A	65	LYS	5.8
2	B	196	GLY	5.6
2	B	5	ILE	5.3
1	A	283	LEU	5.3
1	A	285	GLY	5.1
2	B	197	GLN	5.1
2	B	7	THR	5.0
2	B	231	GLY	5.0
2	B	209	LEU	5.0
1	A	448	ARG	5.0
2	B	88	TRP	5.0
2	B	238	LYS	4.9
1	A	70	LYS	4.8
2	B	198	HIS	4.8
1	A	254	VAL	4.7
2	B	193	LEU	4.6
1	A	358	ARG	4.6
2	B	6	GLU	4.5
1	A	92	LEU	4.5
2	B	195	ILE	4.5
1	A	217	PRO	4.4
2	B	93	GLY	4.3
2	B	176	PRO	4.1
2	B	67	ASP	4.1
1	A	64	LYS	4.1
1	A	72	ARG	4.0
2	B	241	VAL	4.0
1	A	357	MET	4.0
2	B	315	HIS	4.0
2	B	230	MET	3.9
2	B	211	ARG	3.9
2	B	174	GLN	3.8
2	B	203	GLU	3.8
2	B	169	GLU	3.8
2	B	237	ASP	3.8
2	B	14	PRO	3.8
2	B	227	PHE	3.7

*Continued on next page...*

*Continued from previous page...*

Mol	Chain	Res	Type	RSRZ
1	A	223	LYS	3.6
2	B	68	SER	3.6
2	B	66	LYS	3.6
2	B	199	ARG	3.6
2	B	173	LYS	3.6
1	A	449	GLU	3.5
2	B	194	GLU	3.5
1	A	24	TRP	3.3
1	A	284	ARG	3.3
1	A	293	ILE	3.3
1	A	292	VAL	3.3
2	B	213	GLY	3.3
1	A	360	ALA	3.2
2	B	284	ARG	3.2
2	B	87	PHE	3.2
2	B	204	GLU	3.1
2	B	167	ILE	3.1
1	A	452	LEU	3.1
2	B	166	LYS	3.0
2	B	8	VAL	3.0
1	A	224	GLU	2.9
2	B	410	TRP	2.9
2	B	207	GLN	2.9
1	A	282	LEU	2.9
2	B	15	GLY	2.9
2	B	9	PRO	2.8
1	A	258	GLN	2.8
1	A	63	ILE	2.8
1	A	553	SER	2.8
2	B	104	LYS	2.7
1	A	257	ILE	2.7
2	B	406	TRP	2.7
2	B	206	ARG	2.7
2	B	85	GLN	2.6
2	B	283	LEU	2.6
1	A	71	TRP	2.5
2	B	242	GLN	2.5
2	B	69	THR	2.5
1	A	253	THR	2.5
1	A	90	VAL	2.4
2	B	12	LEU	2.4
2	B	170	PRO	2.4

*Continued on next page...*

*Continued from previous page...*

Mol	Chain	Res	Type	RSRZ
2	B	239	TRP	2.4
2	B	358	ARG	2.4
1	A	297	GLU	2.4
1	A	451	LYS	2.3
2	B	201	LYS	2.3
1	A	259	LYS	2.3
2	B	105	SER	2.3
2	B	360	ALA	2.2
2	B	162	SER	2.2
1	A	471	ASN	2.2
2	B	405	TYR	2.1
2	B	359	GLY	2.1
1	A	255	ASN	2.1
1	A	291	GLU	2.1
2	B	171	PHE	2.1
1	A	313	PRO	2.1
1	A	51	GLY	2.1
2	B	403	THR	2.0
1	A	261	VAL	2.0
2	B	168	LEU	2.0
2	B	277	ARG	2.0

## 6.2 Non-standard residues in protein, DNA, RNA chains ⓘ

There are no non-standard protein/DNA/RNA residues in this entry.

## 6.3 Carbohydrates ⓘ

There are no carbohydrates in this entry.

## 6.4 Ligands ⓘ

In the following table, the Atoms column lists the number of modelled atoms in the group and the number defined in the chemical component dictionary. LLDF column lists the quality of electron density of the group with respect to its neighbouring residues in protein, DNA or RNA chains. The B-factors column lists the minimum, median, 95<sup>th</sup> percentile and maximum values of B factors of atoms in the group. The column labelled 'Q< 0.9' lists the number of atoms with occupancy less than 0.9.

Mol	Type	Chain	Res	Atoms	RSCC	RSR	LLDF	B-factors(Å <sup>2</sup> )	Q<0.9
5	DMS	B	503	4/4	0.90	0.29	8.30	20,27,56,147	0

*Continued on next page...*

*Continued from previous page...*

Mol	Type	Chain	Res	Atoms	RSCC	RSR	LLDF	B-factors( $\text{\AA}^2$ )	Q<0.9
4	MG	A	602	1/1	0.39	0.24	5.68	65,65,65,65	0
5	DMS	B	506	4/4	0.93	0.21	3.66	57,76,96,106	0
5	DMS	A	603	4/4	0.99	0.18	3.43	22,51,73,163	0
5	DMS	B	501	4/4	0.97	0.23	2.72	43,52,52,117	0
5	DMS	B	505	4/4	0.97	0.20	1.91	32,35,43,146	0
5	DMS	B	502	4/4	0.98	0.13	1.03	31,36,41,49	0
3	T27	A	601	28/28	0.96	0.12	0.86	25,30,41,41	0
5	DMS	B	507	4/4	0.96	0.18	0.58	29,30,83,117	0
5	DMS	B	504	4/4	0.85	0.30	0.24	50,76,81,132	0
5	DMS	A	606	4/4	0.90	0.18	0.05	45,56,81,86	0
6	14N	A	607	16/16	0.90	0.12	0.02	34,39,56,56	0
5	DMS	A	604	4/4	0.97	0.10	-0.13	34,40,44,48	0
5	DMS	A	605	4/4	0.96	0.10	-0.16	45,53,66,70	0

## 6.5 Other polymers [i](#)

There are no such residues in this entry.