



# Full wwPDB X-ray Structure Validation Report ⓘ

Nov 7, 2017 – 09:38 AM EST

PDB ID : 4IIU  
Title : Crystal structure of a putative 3-oxoacyl-[acyl-carrier protein]reductase from Escherichia coli strain CFT073 complexed with NADP+ at 2.1 Å resolution  
Authors : Hou, J.; Osinski, T.; Zheng, H.; Shumilin, I.; Shabalin, I.; Shatsman, S.; Anderson, W.F.; Minor, W.; Center for Structural Genomics of Infectious Diseases (CSGID)  
Deposited on : unknown  
Resolution : 2.10 Å (reported)

This is a Full wwPDB X-ray Structure Validation Report for a publicly released PDB entry.

We welcome your comments at [validation@mail.wwpdb.org](mailto:validation@mail.wwpdb.org)

A user guide is available at

<http://wwpdb.org/validation/2016/XrayValidationReportHelp>

with specific help available everywhere you see the ⓘ symbol.

---

The following versions of software and data (see [references ⓘ](#)) were used in the production of this report:

MolProbity : 4.02b-467  
Mogul : 1.7.2 (RC1), CSD as538be (2017)  
Xtriage (Phenix) : 1.9-1692  
EDS : rb-20030345  
Percentile statistics : 20161228.v01 (using entries in the PDB archive December 28th 2016)  
Refmac : 5.8.0135  
CCP4 : 6.5.0  
Ideal geometry (proteins) : Engh & Huber (2001)  
Ideal geometry (DNA, RNA) : Parkinson et al. (1996)  
Validation Pipeline (wwPDB-VP) : rb-20030345

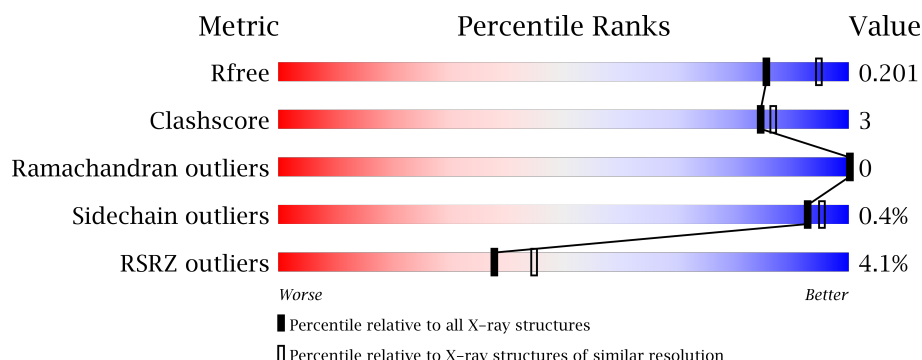
# 1 Overall quality at a glance

The following experimental techniques were used to determine the structure:

## *X-RAY DIFFRACTION*

The reported resolution of this entry is 2.10 Å.

Percentile scores (ranging between 0-100) for global validation metrics of the entry are shown in the following graphic. The table shows the number of entries on which the scores are based.



Metric	Whole archive (#Entries)	Similar resolution (#Entries, resolution range(Å))
$R_{free}$	100719	4243 (2.10-2.10)
Clashscore	112137	4788 (2.10-2.10)
Ramachandran outliers	110173	4740 (2.10-2.10)
Sidechain outliers	110143	4741 (2.10-2.10)
RSRZ outliers	101464	4275 (2.10-2.10)

The table below summarises the geometric issues observed across the polymeric chains and their fit to the electron density. The red, orange, yellow and green segments on the lower bar indicate the fraction of residues that contain outliers for  $\geq 3$ , 2, 1 and 0 types of geometric quality criteria. A grey segment represents the fraction of residues that are not modelled. The numeric value for each fraction is indicated below the corresponding segment, with a dot representing fractions  $\leq 5\%$ . The upper red bar (where present) indicates the fraction of residues that have poor fit to the electron density. The numeric value is given above the bar.

Mol	Chain	Length	Quality of chain
1	A	267	<div> <div>3%</div> <div>87%</div> <div>9%</div> </div>
1	B	267	<div> <div>5%</div> <div>86%</div> <div>9%</div> </div>
1	C	267	<div> <div>5%</div> <div>86%</div> <div>10%</div> </div>
1	D	267	<div> <div>0%</div> <div>86%</div> <div>9%</div> </div>

## 2 Entry composition

There are 3 unique types of molecules in this entry. The entry contains 7766 atoms, of which 0 are hydrogens and 0 are deuteriums.

In the tables below, the ZeroOcc column contains the number of atoms modelled with zero occupancy, the AltConf column contains the number of residues with at least one atom in alternate conformation and the Trace column contains the number of residues modelled with at most 2 atoms.

- Molecule 1 is a protein called 3-oxoacyl-[acyl-carrier protein] reductase.

Mol	Chain	Residues	Atoms					ZeroOcc	AltConf	Trace
1	A	243	Total	C	N	O	S	0	4	0
			1807	1121	338	334	14			
1	B	242	Total	C	N	O	S	0	1	0
			1764	1095	323	332	14			
1	C	240	Total	C	N	O	S	0	0	0
			1735	1079	317	326	13			
1	D	242	Total	C	N	O	S	0	1	0
			1773	1103	325	331	14			

There are 100 discrepancies between the modelled and reference sequences:

Chain	Residue	Modelled	Actual	Comment	Reference
A	-23	MET	-	EXPRESSION TAG	UNP Q8FJ14
A	-22	HIS	-	EXPRESSION TAG	UNP Q8FJ14
A	-21	HIS	-	EXPRESSION TAG	UNP Q8FJ14
A	-20	HIS	-	EXPRESSION TAG	UNP Q8FJ14
A	-19	HIS	-	EXPRESSION TAG	UNP Q8FJ14
A	-18	HIS	-	EXPRESSION TAG	UNP Q8FJ14
A	-17	HIS	-	EXPRESSION TAG	UNP Q8FJ14
A	-16	SER	-	EXPRESSION TAG	UNP Q8FJ14
A	-15	SER	-	EXPRESSION TAG	UNP Q8FJ14
A	-14	GLY	-	EXPRESSION TAG	UNP Q8FJ14
A	-13	VAL	-	EXPRESSION TAG	UNP Q8FJ14
A	-12	ASP	-	EXPRESSION TAG	UNP Q8FJ14
A	-11	LEU	-	EXPRESSION TAG	UNP Q8FJ14
A	-10	GLY	-	EXPRESSION TAG	UNP Q8FJ14
A	-9	THR	-	EXPRESSION TAG	UNP Q8FJ14
A	-8	GLU	-	EXPRESSION TAG	UNP Q8FJ14
A	-7	ASN	-	EXPRESSION TAG	UNP Q8FJ14
A	-6	LEU	-	EXPRESSION TAG	UNP Q8FJ14
A	-5	TYR	-	EXPRESSION TAG	UNP Q8FJ14
A	-4	PHE	-	EXPRESSION TAG	UNP Q8FJ14
A	-3	GLN	-	EXPRESSION TAG	UNP Q8FJ14

*Continued on next page...*

*Continued from previous page...*

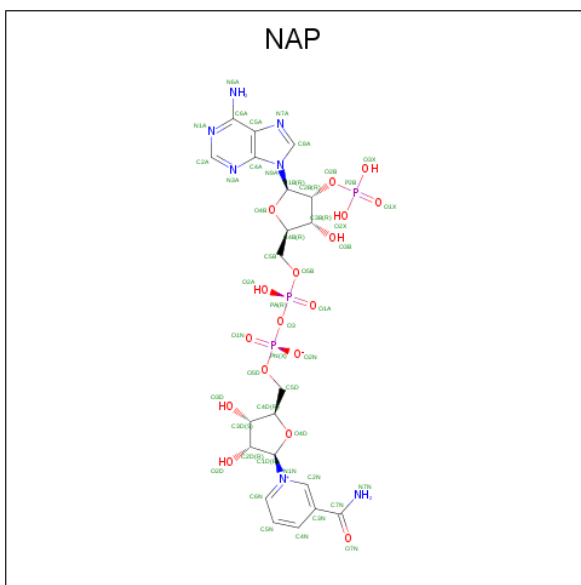
Chain	Residue	Modelled	Actual	Comment	Reference
A	-2	SER	-	EXPRESSION TAG	UNP Q8FJ14
A	-1	ASN	-	EXPRESSION TAG	UNP Q8FJ14
A	0	ALA	-	EXPRESSION TAG	UNP Q8FJ14
A	20	ARG	CYS	ENGINEERED MUTATION	UNP Q8FJ14
B	-23	MET	-	EXPRESSION TAG	UNP Q8FJ14
B	-22	HIS	-	EXPRESSION TAG	UNP Q8FJ14
B	-21	HIS	-	EXPRESSION TAG	UNP Q8FJ14
B	-20	HIS	-	EXPRESSION TAG	UNP Q8FJ14
B	-19	HIS	-	EXPRESSION TAG	UNP Q8FJ14
B	-18	HIS	-	EXPRESSION TAG	UNP Q8FJ14
B	-17	HIS	-	EXPRESSION TAG	UNP Q8FJ14
B	-16	SER	-	EXPRESSION TAG	UNP Q8FJ14
B	-15	SER	-	EXPRESSION TAG	UNP Q8FJ14
B	-14	GLY	-	EXPRESSION TAG	UNP Q8FJ14
B	-13	VAL	-	EXPRESSION TAG	UNP Q8FJ14
B	-12	ASP	-	EXPRESSION TAG	UNP Q8FJ14
B	-11	LEU	-	EXPRESSION TAG	UNP Q8FJ14
B	-10	GLY	-	EXPRESSION TAG	UNP Q8FJ14
B	-9	THR	-	EXPRESSION TAG	UNP Q8FJ14
B	-8	GLU	-	EXPRESSION TAG	UNP Q8FJ14
B	-7	ASN	-	EXPRESSION TAG	UNP Q8FJ14
B	-6	LEU	-	EXPRESSION TAG	UNP Q8FJ14
B	-5	TYR	-	EXPRESSION TAG	UNP Q8FJ14
B	-4	PHE	-	EXPRESSION TAG	UNP Q8FJ14
B	-3	GLN	-	EXPRESSION TAG	UNP Q8FJ14
B	-2	SER	-	EXPRESSION TAG	UNP Q8FJ14
B	-1	ASN	-	EXPRESSION TAG	UNP Q8FJ14
B	0	ALA	-	EXPRESSION TAG	UNP Q8FJ14
B	20	ARG	CYS	ENGINEERED MUTATION	UNP Q8FJ14
C	-23	MET	-	EXPRESSION TAG	UNP Q8FJ14
C	-22	HIS	-	EXPRESSION TAG	UNP Q8FJ14
C	-21	HIS	-	EXPRESSION TAG	UNP Q8FJ14
C	-20	HIS	-	EXPRESSION TAG	UNP Q8FJ14
C	-19	HIS	-	EXPRESSION TAG	UNP Q8FJ14
C	-18	HIS	-	EXPRESSION TAG	UNP Q8FJ14
C	-17	HIS	-	EXPRESSION TAG	UNP Q8FJ14
C	-16	SER	-	EXPRESSION TAG	UNP Q8FJ14
C	-15	SER	-	EXPRESSION TAG	UNP Q8FJ14
C	-14	GLY	-	EXPRESSION TAG	UNP Q8FJ14
C	-13	VAL	-	EXPRESSION TAG	UNP Q8FJ14
C	-12	ASP	-	EXPRESSION TAG	UNP Q8FJ14
C	-11	LEU	-	EXPRESSION TAG	UNP Q8FJ14

*Continued on next page...*

*Continued from previous page...*

Chain	Residue	Modelled	Actual	Comment	Reference
C	-10	GLY	-	EXPRESSION TAG	UNP Q8FJ14
C	-9	THR	-	EXPRESSION TAG	UNP Q8FJ14
C	-8	GLU	-	EXPRESSION TAG	UNP Q8FJ14
C	-7	ASN	-	EXPRESSION TAG	UNP Q8FJ14
C	-6	LEU	-	EXPRESSION TAG	UNP Q8FJ14
C	-5	TYR	-	EXPRESSION TAG	UNP Q8FJ14
C	-4	PHE	-	EXPRESSION TAG	UNP Q8FJ14
C	-3	GLN	-	EXPRESSION TAG	UNP Q8FJ14
C	-2	SER	-	EXPRESSION TAG	UNP Q8FJ14
C	-1	ASN	-	EXPRESSION TAG	UNP Q8FJ14
C	0	ALA	-	EXPRESSION TAG	UNP Q8FJ14
C	20	ARG	CYS	ENGINEERED MUTATION	UNP Q8FJ14
D	-23	MET	-	EXPRESSION TAG	UNP Q8FJ14
D	-22	HIS	-	EXPRESSION TAG	UNP Q8FJ14
D	-21	HIS	-	EXPRESSION TAG	UNP Q8FJ14
D	-20	HIS	-	EXPRESSION TAG	UNP Q8FJ14
D	-19	HIS	-	EXPRESSION TAG	UNP Q8FJ14
D	-18	HIS	-	EXPRESSION TAG	UNP Q8FJ14
D	-17	HIS	-	EXPRESSION TAG	UNP Q8FJ14
D	-16	SER	-	EXPRESSION TAG	UNP Q8FJ14
D	-15	SER	-	EXPRESSION TAG	UNP Q8FJ14
D	-14	GLY	-	EXPRESSION TAG	UNP Q8FJ14
D	-13	VAL	-	EXPRESSION TAG	UNP Q8FJ14
D	-12	ASP	-	EXPRESSION TAG	UNP Q8FJ14
D	-11	LEU	-	EXPRESSION TAG	UNP Q8FJ14
D	-10	GLY	-	EXPRESSION TAG	UNP Q8FJ14
D	-9	THR	-	EXPRESSION TAG	UNP Q8FJ14
D	-8	GLU	-	EXPRESSION TAG	UNP Q8FJ14
D	-7	ASN	-	EXPRESSION TAG	UNP Q8FJ14
D	-6	LEU	-	EXPRESSION TAG	UNP Q8FJ14
D	-5	TYR	-	EXPRESSION TAG	UNP Q8FJ14
D	-4	PHE	-	EXPRESSION TAG	UNP Q8FJ14
D	-3	GLN	-	EXPRESSION TAG	UNP Q8FJ14
D	-2	SER	-	EXPRESSION TAG	UNP Q8FJ14
D	-1	ASN	-	EXPRESSION TAG	UNP Q8FJ14
D	0	ALA	-	EXPRESSION TAG	UNP Q8FJ14
D	20	ARG	CYS	ENGINEERED MUTATION	UNP Q8FJ14

- Molecule 2 is NADP NICOTINAMIDE-ADENINE-DINUCLEOTIDE PHOSPHATE (three-letter code: NAP) (formula: C<sub>21</sub>H<sub>28</sub>N<sub>7</sub>O<sub>17</sub>P<sub>3</sub>).



Mol	Chain	Residues	Atoms					ZeroOcc	AltConf
2	A	1	Total 48	C 21	N 7	O 17	P 3	0	0
2	B	1	Total 48	C 21	N 7	O 17	P 3	0	0
2	C	1	Total 48	C 21	N 7	O 17	P 3	0	0
2	D	1	Total 48	C 21	N 7	O 17	P 3	0	0

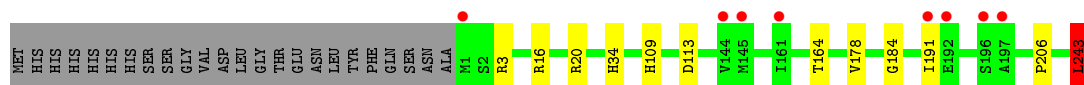
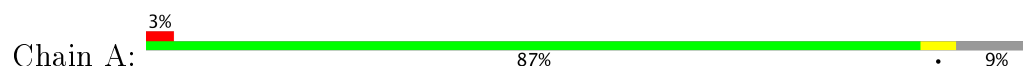
- Molecule 3 is water.

Mol	Chain	Residues	Atoms	ZeroOcc	AltConf
3	A	158	Total O 158 158	0	0
3	B	92	Total O 92 92	0	0
3	C	77	Total O 77 77	0	0
3	D	168	Total O 168 168	0	0

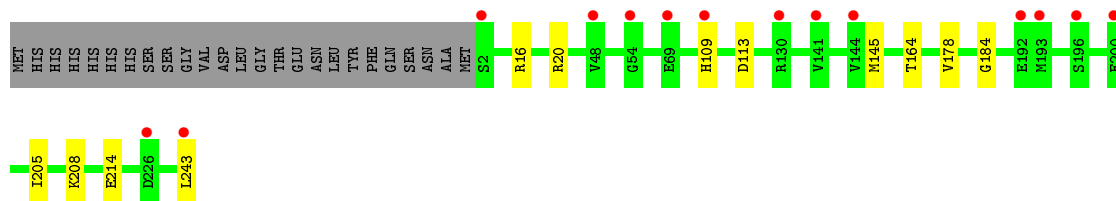
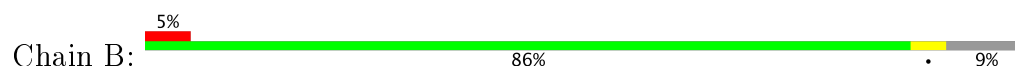
### 3 Residue-property plots [i](#)

These plots are drawn for all protein, RNA and DNA chains in the entry. The first graphic for a chain summarises the proportions of the various outlier classes displayed in the second graphic. The second graphic shows the sequence view annotated by issues in geometry and electron density. Residues are color-coded according to the number of geometric quality criteria for which they contain at least one outlier: green = 0, yellow = 1, orange = 2 and red = 3 or more. A red dot above a residue indicates a poor fit to the electron density ( $RSRZ > 2$ ). Stretches of 2 or more consecutive residues without any outlier are shown as a green connector. Residues present in the sample, but not in the model, are shown in grey.

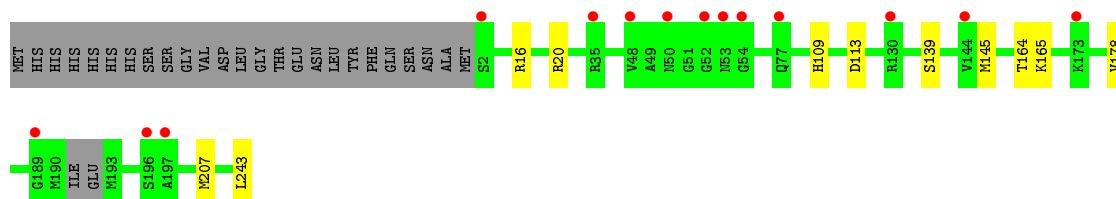
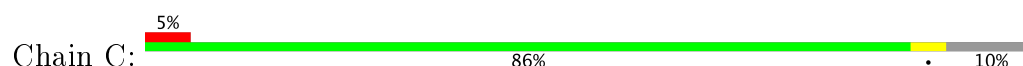
- Molecule 1: 3-oxoacyl-[acyl-carrier protein] reductase



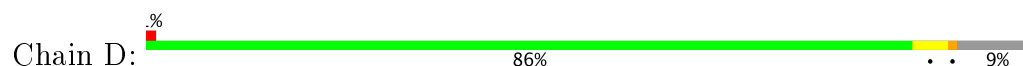
- Molecule 1: 3-oxoacyl-[acyl-carrier protein] reductase



- Molecule 1: 3-oxoacyl-[acyl-carrier protein] reductase



- Molecule 1: 3-oxoacyl-[acyl-carrier protein] reductase



## 4 Data and refinement statistics

Property	Value	Source
Space group	P 65	Depositor
Cell constants a, b, c, $\alpha$ , $\beta$ , $\gamma$	128.54Å 128.54Å 125.94Å 90.00° 90.00° 120.00°	Depositor
Resolution (Å)	39.94 – 2.10 39.91 – 2.10	Depositor EDS
% Data completeness (in resolution range)	98.7 (39.94-2.10) 98.7 (39.91-2.10)	Depositor EDS
$R_{merge}$	0.06	Depositor
$R_{sym}$	(Not available)	Depositor
$\langle I/\sigma(I) \rangle$ <sup>1</sup>	4.16 (at 2.10Å)	Xtriage
Refinement program	REFMAC	Depositor
R, $R_{free}$	0.168 , 0.193 0.178 , 0.201	Depositor DCC
$R_{free}$ test set	3427 reflections (5.32%)	DCC
Wilson B-factor (Å <sup>2</sup> )	24.4	Xtriage
Anisotropy	0.055	Xtriage
Bulk solvent $k_{sol}$ (e/Å <sup>3</sup> ), $B_{sol}$ (Å <sup>2</sup> )	0.36 , 48.5	EDS
L-test for twinning <sup>2</sup>	$\langle  L  \rangle = 0.51$ , $\langle L^2 \rangle = 0.34$	Xtriage
Estimated twinning fraction	0.032 for h,-h-k,-l	Xtriage
$F_o, F_c$ correlation	0.96	EDS
Total number of atoms	7766	wwPDB-VP
Average B, all atoms (Å <sup>2</sup> )	34.0	wwPDB-VP

Xtriage's analysis on translational NCS is as follows: *The largest off-origin peak in the Patterson function is 3.64% of the height of the origin peak. No significant pseudotranslation is detected.*

<sup>1</sup>Intensities estimated from amplitudes.

<sup>2</sup>Theoretical values of  $\langle |L| \rangle$ ,  $\langle L^2 \rangle$  for acentric reflections are 0.5, 0.333 respectively for untwinned datasets, and 0.375, 0.2 for perfectly twinned datasets.



## 5 Model quality [i](#)

### 5.1 Standard geometry [i](#)

Bond lengths and bond angles in the following residue types are not validated in this section: NAP

The Z score for a bond length (or angle) is the number of standard deviations the observed value is removed from the expected value. A bond length (or angle) with  $|Z| > 5$  is considered an outlier worth inspection. RMSZ is the root-mean-square of all Z scores of the bond lengths (or angles).

Mol	Chain	Bond lengths		Bond angles	
		RMSZ	$\# Z  > 5$	RMSZ	$\# Z  > 5$
1	A	0.50	0/1830	0.70	2/2472 (0.1%)
1	B	0.43	0/1787	0.67	0/2417
1	C	0.42	0/1757	0.68	0/2377
1	D	0.48	0/1796	0.69	1/2427 (0.0%)
All	All	0.46	0/7170	0.68	3/9693 (0.0%)

There are no bond length outliers.

All (3) bond angle outliers are listed below:

Mol	Chain	Res	Type	Atoms	Z	Observed(°)	Ideal(°)
1	A	3	ARG	NE-CZ-NH2	5.67	123.13	120.30
1	D	3	ARG	NE-CZ-NH2	-5.46	117.57	120.30
1	A	243	LEU	CA-CB-CG	5.21	127.28	115.30

There are no chirality outliers.

There are no planarity outliers.

### 5.2 Too-close contacts [i](#)

In the following table, the Non-H and H(model) columns list the number of non-hydrogen atoms and hydrogen atoms in the chain respectively. The H(added) column lists the number of hydrogen atoms added and optimized by MolProbity. The Clashes column lists the number of clashes within the asymmetric unit, whereas Symm-Clashes lists symmetry related clashes.

Mol	Chain	Non-H	H(model)	H(added)	Clashes	Symm-Clashes
1	A	1807	0	1807	11	0
1	B	1764	0	1749	8	0
1	C	1735	0	1718	8	0
1	D	1773	0	1775	15	0

*Continued on next page...*

*Continued from previous page...*

Mol	Chain	Non-H	H(model)	H(added)	Clashes	Symm-Clashes
2	A	48	0	25	3	0
2	B	48	0	25	1	0
2	C	48	0	25	1	0
2	D	48	0	25	2	0
3	A	158	0	0	0	0
3	B	92	0	0	1	0
3	C	77	0	0	1	0
3	D	168	0	0	2	0
All	All	7766	0	7149	39	0

The all-atom clashscore is defined as the number of clashes found per 1000 atoms (including hydrogen atoms). The all-atom clashscore for this structure is 3.

All (39) close contacts within the same asymmetric unit are listed below, sorted by their clash magnitude.

Atom-1	Atom-2	Interatomic distance (Å)	Clash overlap (Å)
1:D:141:VAL:HG23	1:D:243:LEU:HD11	1.55	0.87
1:D:141:VAL:CG2	1:D:243:LEU:HD11	2.06	0.84
1:D:173:LYS:HD3	3:D:5061:HOH:O	1.86	0.75
1:A:206:PRO:O	1:D:173:LYS:HE3	1.99	0.62
1:D:243:LEU:HD13	1:D:243:LEU:N	2.16	0.60
1:A:206:PRO:O	1:D:173:LYS:HD2	2.05	0.56
1:C:164:THR:HG23	1:C:178:VAL:HG12	1.91	0.52
1:D:164:THR:HG23	1:D:178:VAL:HG12	1.92	0.51
1:A:164:THR:HG23	1:A:178:VAL:HG12	1.93	0.50
3:B:4050:HOH:O	1:C:207:MET:HE1	2.11	0.49
1:B:145:MET:SD	1:B:243:LEU:HD23	2.53	0.49
1:B:164:THR:HG23	1:B:178:VAL:HG12	1.94	0.49
1:A:206:PRO:O	1:D:173:LYS:CE	2.60	0.49
1:A:243:LEU:HD13	1:A:243:LEU:O	2.14	0.48
1:C:165:LYS:NZ	3:C:3020:HOH:O	2.48	0.47
1:C:243:LEU:HD12	1:C:243:LEU:O	2.16	0.46
1:B:243:LEU:HD12	1:B:243:LEU:O	2.16	0.46
1:B:214:GLU:CD	1:B:214:GLU:H	2.17	0.45
1:D:16:ARG:O	1:D:20[A]:ARG:HG2	2.16	0.45
1:B:16:ARG:O	1:B:20:ARG:HG2	2.17	0.45
1:D:141:VAL:HG21	1:D:243:LEU:HD11	1.91	0.44
1:A:16:ARG:O	1:A:20[B]:ARG:HG3	2.18	0.44
1:C:16:ARG:O	1:C:20:ARG:HG2	2.18	0.44
1:A:16:ARG:O	1:A:20[A]:ARG:HG2	2.16	0.44
1:D:243:LEU:O	1:D:243:LEU:HD22	2.18	0.43

*Continued on next page...*

Continued from previous page...

Atom-1	Atom-2	Interatomic distance (Å)	Clash overlap (Å)
1:A:184:GLY:O	2:A:1901:NAP:H4N	2.18	0.43
1:C:145:MET:SD	1:C:243:LEU:HD23	2.58	0.43
1:C:139:SER:O	2:C:2901:NAP:H6N	2.19	0.43
1:D:174:ARG:HD3	3:D:5083:HOH:O	2.20	0.42
1:B:205:ILE:O	1:B:208:LYS:HD2	2.20	0.41
1:A:191:ILE:HD11	2:A:1901:NAP:O7N	2.21	0.41
1:D:109:HIS:O	1:D:113:ASP:HB2	2.20	0.41
1:D:34:HIS:HB2	2:D:4901:NAP:C2A	2.50	0.41
1:A:109:HIS:O	1:A:113:ASP:HB2	2.21	0.41
1:B:109:HIS:O	1:B:113:ASP:HB2	2.21	0.41
1:B:184:GLY:O	2:B:3901:NAP:H4N	2.21	0.41
1:D:139:SER:O	2:D:4901:NAP:H6N	2.20	0.41
1:A:34:HIS:HB2	2:A:1901:NAP:C2A	2.51	0.40
1:C:109:HIS:O	1:C:113:ASP:HB2	2.20	0.40

There are no symmetry-related clashes.

## 5.3 Torsion angles [i](#)

### 5.3.1 Protein backbone [i](#)

In the following table, the Percentiles column shows the percent Ramachandran outliers of the chain as a percentile score with respect to all X-ray entries followed by that with respect to entries of similar resolution.

The Analysed column shows the number of residues for which the backbone conformation was analysed, and the total number of residues.

Mol	Chain	Analysed	Favoured	Allowed	Outliers	Percentiles	
1	A	245/267 (92%)	238 (97%)	7 (3%)	0	100	100
1	B	241/267 (90%)	235 (98%)	6 (2%)	0	100	100
1	C	236/267 (88%)	230 (98%)	6 (2%)	0	100	100
1	D	241/267 (90%)	235 (98%)	6 (2%)	0	100	100
All	All	963/1068 (90%)	938 (97%)	25 (3%)	0	100	100

There are no Ramachandran outliers to report.

### 5.3.2 Protein sidechains [i](#)

In the following table, the Percentiles column shows the percent sidechain outliers of the chain as a percentile score with respect to all X-ray entries followed by that with respect to entries of similar resolution.

The Analysed column shows the number of residues for which the sidechain conformation was analysed, and the total number of residues.

Mol	Chain	Analysed	Rotameric	Outliers	Percentiles	
1	A	178/203 (88%)	177 (99%)	1 (1%)	89	92
1	B	174/203 (86%)	174 (100%)	0	100	100
1	C	170/203 (84%)	170 (100%)	0	100	100
1	D	176/203 (87%)	174 (99%)	2 (1%)	78	83
All	All	698/812 (86%)	695 (100%)	3 (0%)	93	95

All (3) residues with a non-rotameric sidechain are listed below:

Mol	Chain	Res	Type
1	A	243	LEU
1	D	173	LYS
1	D	243	LEU

Some sidechains can be flipped to improve hydrogen bonding and reduce clashes. All (5) such sidechains are listed below:

Mol	Chain	Res	Type
1	A	212	GLN
1	B	45	ASN
1	D	34	HIS
1	D	120	GLN
1	D	212	GLN

### 5.3.3 RNA [i](#)

There are no RNA molecules in this entry.

## 5.4 Non-standard residues in protein, DNA, RNA chains [i](#)

There are no non-standard protein/DNA/RNA residues in this entry.

## 5.5 Carbohydrates [i](#)

There are no carbohydrates in this entry.

## 5.6 Ligand geometry [i](#)

4 ligands are modelled in this entry.

In the following table, the Counts columns list the number of bonds (or angles) for which Mogul statistics could be retrieved, the number of bonds (or angles) that are observed in the model and the number of bonds (or angles) that are defined in the Chemical Component Dictionary. The Link column lists molecule types, if any, to which the group is linked. The Z score for a bond length (or angle) is the number of standard deviations the observed value is removed from the expected value. A bond length (or angle) with  $|Z| > 2$  is considered an outlier worth inspection. RMSZ is the root-mean-square of all Z scores of the bond lengths (or angles).

Mol	Type	Chain	Res	Link	Bond lengths			Bond angles		
					Counts	RMSZ	# Z  > 2	Counts	RMSZ	# Z  > 2
2	NAP	A	1901	-	44,52,52	0.83	2 (4%)	51,80,80	1.51	5 (9%)
2	NAP	B	3901	-	44,52,52	0.99	4 (9%)	51,80,80	1.56	4 (7%)
2	NAP	C	2901	-	44,52,52	0.98	5 (11%)	51,80,80	1.56	6 (11%)
2	NAP	D	4901	-	44,52,52	0.87	1 (2%)	51,80,80	1.47	4 (7%)

In the following table, the Chirals column lists the number of chiral outliers, the number of chiral centers analysed, the number of these observed in the model and the number defined in the Chemical Component Dictionary. Similar counts are reported in the Torsion and Rings columns. '-' means no outliers of that kind were identified.

Mol	Type	Chain	Res	Link	Chirals	Torsions	Rings
2	NAP	A	1901	-	-	0/27/67/67	0/5/5/5
2	NAP	B	3901	-	-	0/27/67/67	0/5/5/5
2	NAP	C	2901	-	-	0/27/67/67	0/5/5/5
2	NAP	D	4901	-	-	0/27/67/67	0/5/5/5

All (12) bond length outliers are listed below:

Mol	Chain	Res	Type	Atoms	Z	Observed(Å)	Ideal(Å)
2	A	1901	NAP	P2B-O2B	2.12	1.63	1.59
2	C	2901	NAP	C2A-N3A	2.13	1.35	1.32
2	B	3901	NAP	P2B-O2B	2.17	1.63	1.59
2	C	2901	NAP	O4D-C1D	2.23	1.44	1.41
2	C	2901	NAP	O4B-C1B	2.24	1.44	1.41
2	C	2901	NAP	P2B-O2B	2.34	1.63	1.59

*Continued on next page...*

*Continued from previous page...*

Mol	Chain	Res	Type	Atoms	Z	Observed(Å)	Ideal(Å)
2	B	3901	NAP	C2A-N3A	2.44	1.36	1.32
2	B	3901	NAP	O4B-C1B	2.51	1.44	1.41
2	D	4901	NAP	P2B-O2B	2.59	1.64	1.59
2	A	1901	NAP	C5A-C4A	2.70	1.46	1.40
2	B	3901	NAP	C5A-C4A	2.76	1.46	1.40
2	C	2901	NAP	C5A-C4A	2.95	1.47	1.40

All (19) bond angle outliers are listed below:

Mol	Chain	Res	Type	Atoms	Z	Observed(°)	Ideal(°)
2	C	2901	NAP	N3A-C2A-N1A	-7.62	122.22	128.86
2	B	3901	NAP	N3A-C2A-N1A	-7.30	122.50	128.86
2	A	1901	NAP	N3A-C2A-N1A	-6.93	122.82	128.86
2	D	4901	NAP	N3A-C2A-N1A	-5.46	124.10	128.86
2	D	4901	NAP	C4A-C5A-N7A	-3.72	105.82	109.41
2	C	2901	NAP	C1B-N9A-C4A	-2.87	121.67	126.64
2	C	2901	NAP	C4A-C5A-N7A	-2.43	107.06	109.41
2	A	1901	NAP	C1B-N9A-C4A	-2.38	122.52	126.64
2	A	1901	NAP	O2B-P2B-O1X	-2.01	101.37	109.26
2	D	4901	NAP	C3N-C7N-N7N	2.07	120.14	117.77
2	C	2901	NAP	C2A-N1A-C6A	2.13	122.50	118.77
2	C	2901	NAP	O3X-P2B-O2X	2.25	116.70	107.61
2	C	2901	NAP	C3N-C7N-N7N	2.39	120.50	117.77
2	B	3901	NAP	C3N-C7N-N7N	2.74	120.91	117.77
2	B	3901	NAP	O3X-P2B-O2X	2.81	118.97	107.61
2	B	3901	NAP	O2N-PN-O1N	2.86	127.07	112.28
2	A	1901	NAP	O2A-PA-O1A	2.86	127.09	112.28
2	A	1901	NAP	C2A-N1A-C6A	3.07	124.13	118.77
2	D	4901	NAP	O2A-PA-O1A	3.14	128.52	112.28

There are no chirality outliers.

There are no torsion outliers.

There are no ring outliers.

4 monomers are involved in 7 short contacts:

Mol	Chain	Res	Type	Clashes	Symm-Clashes
2	A	1901	NAP	3	0
2	B	3901	NAP	1	0
2	C	2901	NAP	1	0
2	D	4901	NAP	2	0

## 5.7 Other polymers

There are no such residues in this entry.

## 5.8 Polymer linkage issues

There are no chain breaks in this entry.

## 6 Fit of model and data ⓘ

### 6.1 Protein, DNA and RNA chains ⓘ

In the following table, the column labelled ‘#RSRZ> 2’ contains the number (and percentage) of RSRZ outliers, followed by percent RSRZ outliers for the chain as percentile scores relative to all X-ray entries and entries of similar resolution. The OWAB column contains the minimum, median, 95<sup>th</sup> percentile and maximum values of the occupancy-weighted average B-factor per residue. The column labelled ‘Q< 0.9’ lists the number of (and percentage) of residues with an average occupancy less than 0.9.

Mol	Chain	Analysed	<RSRZ>	#RSRZ>2			OWAB(Å <sup>2</sup> )	Q<0.9
1	A	243/267 (91%)	-0.06	8 (3%)	47	54	13, 24, 55, 73	0
1	B	242/267 (90%)	0.18	14 (5%)	24	30	20, 40, 67, 79	0
1	C	240/267 (89%)	0.26	14 (5%)	24	30	19, 42, 72, 83	0
1	D	242/267 (90%)	-0.20	4 (1%)	70	75	13, 22, 46, 64	0
All	All	967/1068 (90%)	0.04	40 (4%)	38	45	13, 30, 65, 83	0

All (40) RSRZ outliers are listed below:

Mol	Chain	Res	Type	RSRZ
1	C	2	SER	5.3
1	C	189	GLY	4.8
1	B	2	SER	4.4
1	A	1	MET	4.3
1	C	53	ASN	4.1
1	D	197	ALA	4.1
1	A	196	SER	4.0
1	B	196	SER	3.8
1	D	196	SER	3.5
1	A	197	ALA	3.4
1	A	191	ILE	3.1
1	C	197	ALA	3.0
1	B	54	GLY	3.0
1	B	48	VAL	2.9
1	C	196	SER	2.9
1	C	52	GLY	2.8
1	C	48	VAL	2.8
1	B	200	GLU	2.7
1	C	35	ARG	2.6
1	C	77	GLN	2.6
1	A	192	GLU	2.5

*Continued on next page...*



*Continued from previous page...*

Mol	Chain	Res	Type	RSRZ
1	C	173	LYS	2.5
1	C	50	ASN	2.4
1	B	226	ASP	2.4
1	D	194	GLU	2.4
1	B	144	VAL	2.4
1	B	193	MET	2.4
1	B	109	HIS	2.3
1	A	144	VAL	2.3
1	C	130	ARG	2.3
1	A	145	MET	2.2
1	C	54	GLY	2.1
1	C	144	VAL	2.1
1	B	243	LEU	2.1
1	B	141	VAL	2.1
1	B	130	ARG	2.1
1	B	192	GLU	2.0
1	B	69	GLU	2.0
1	A	161	ILE	2.0
1	D	243	LEU	2.0

## 6.2 Non-standard residues in protein, DNA, RNA chains [i](#)

There are no non-standard protein/DNA/RNA residues in this entry.

## 6.3 Carbohydrates [i](#)

There are no carbohydrates in this entry.

## 6.4 Ligands [i](#)

In the following table, the Atoms column lists the number of modelled atoms in the group and the number defined in the chemical component dictionary. LLDF column lists the quality of electron density of the group with respect to its neighbouring residues in protein, DNA or RNA chains. The B-factors column lists the minimum, median, 95<sup>th</sup> percentile and maximum values of B factors of atoms in the group. The column labelled 'Q< 0.9' lists the number of atoms with occupancy less than 0.9.

Mol	Type	Chain	Res	Atoms	RSCC	RSR	LLDF	B-factors(Å <sup>2</sup> )	Q<0.9
2	NAP	C	2901	48/48	0.90	0.17	0.49	36,43,52,59	0
2	NAP	B	3901	48/48	0.93	0.11	-0.14	25,32,38,43	0

*Continued on next page...*

*Continued from previous page...*

Mol	Type	Chain	Res	Atoms	RSCC	RSR	LLDF	B-factors( $\text{\AA}^2$ )	Q<0.9
2	NAP	A	1901	48/48	0.95	0.10	-0.31	21,25,30,33	0
2	NAP	D	4901	48/48	0.98	0.08	-0.75	17,19,25,26	0

## 6.5 Other polymers [i](#)

There are no such residues in this entry.