



Full wwPDB X-ray Structure Validation Report ⓘ

Sep 16, 2017 – 06:41 PM EDT

PDB ID : 5IKR
Title : The Structure of Mefenamic Acid Bound to Human Cyclooxygenase-2
Authors : Orlando, B.J.; Malkowski, M.G.
Deposited on : unknown
Resolution : 2.34 Å(reported)

This is a Full wwPDB X-ray Structure Validation Report for a publicly released PDB entry.

We welcome your comments at validation@mail.wwpdb.org

A user guide is available at

<http://wwpdb.org/validation/2016/XrayValidationReportHelp>

with specific help available everywhere you see the ⓘ symbol.

The following versions of software and data (see [references ⓘ](#)) were used in the production of this report:

MolProbity : 4.02b-467
Mogul : 1.7.2 (RC1), CSD as538be (2017)
Xtriage (Phenix) : 1.9-1692
EDS : rb-20029824
Percentile statistics : 20161228.v01 (using entries in the PDB archive December 28th 2016)
Refmac : 5.8.0135
CCP4 : 6.5.0
Ideal geometry (proteins) : Engh & Huber (2001)
Ideal geometry (DNA, RNA) : Parkinson et al. (1996)
Validation Pipeline (wwPDB-VP) : rb-20029824

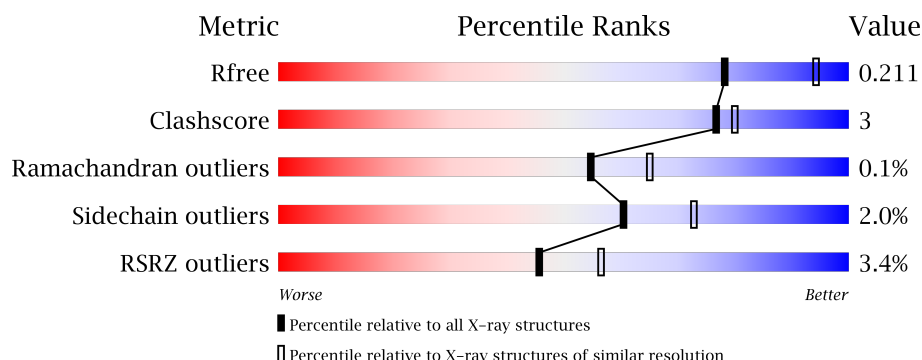
1 Overall quality at a glance

The following experimental techniques were used to determine the structure:

X-RAY DIFFRACTION

The reported resolution of this entry is 2.34 Å.

Percentile scores (ranging between 0-100) for global validation metrics of the entry are shown in the following graphic. The table shows the number of entries on which the scores are based.



Metric	Whole archive (#Entries)	Similar resolution (#Entries, resolution range(Å))
R_{free}	100719	1570 (2.36-2.32)
Clashscore	112137	1673 (2.36-2.32)
Ramachandran outliers	110173	1654 (2.36-2.32)
Sidechain outliers	110143	1655 (2.36-2.32)
RSRZ outliers	101464	1576 (2.36-2.32)

The table below summarises the geometric issues observed across the polymeric chains and their fit to the electron density. The red, orange, yellow and green segments on the lower bar indicate the fraction of residues that contain outliers for ≥ 3 , 2, 1 and 0 types of geometric quality criteria. A grey segment represents the fraction of residues that are not modelled. The numeric value for each fraction is indicated below the corresponding segment, with a dot representing fractions $\leq 5\%$. The upper red bar (where present) indicates the fraction of residues that have poor fit to the electron density. The numeric value is given above the bar.

Mol	Chain	Length	Quality of chain
1	A	551	<div> <div>2%</div> <div> <div></div> <div>94%</div> <div>5%</div> </div> </div>
1	B	551	<div> <div>5%</div> <div> <div></div> <div>93%</div> <div>6%</div> </div> </div>

The following table lists non-polymeric compounds, carbohydrate monomers and non-standard residues in protein, DNA, RNA chains that are outliers for geometric or electron-density-fit criteria:

Mol	Type	Chain	Res	Chirality	Geometry	Clashes	Electron density
4	NAG	B	605	-	-	X	-
6	BOG	A	607	-	-	-	X
6	BOG	A	609	-	-	-	X
6	BOG	B	601	-	-	-	X
7	NH4	B	608	-	-	-	X

2 Entry composition [i](#)

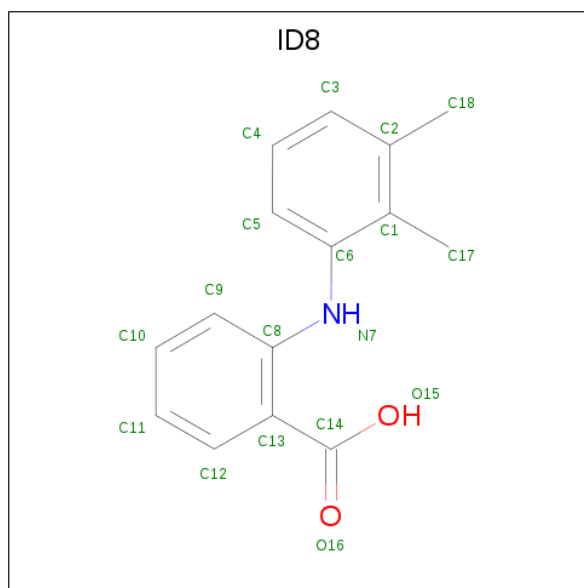
There are 8 unique types of molecules in this entry. The entry contains 18781 atoms, of which 9037 are hydrogens and 0 are deuteriums.

In the tables below, the ZeroOcc column contains the number of atoms modelled with zero occupancy, the AltConf column contains the number of residues with at least one atom in alternate conformation and the Trace column contains the number of residues modelled with at most 2 atoms.

- Molecule 1 is a protein called Prostaglandin G/H synthase 2.

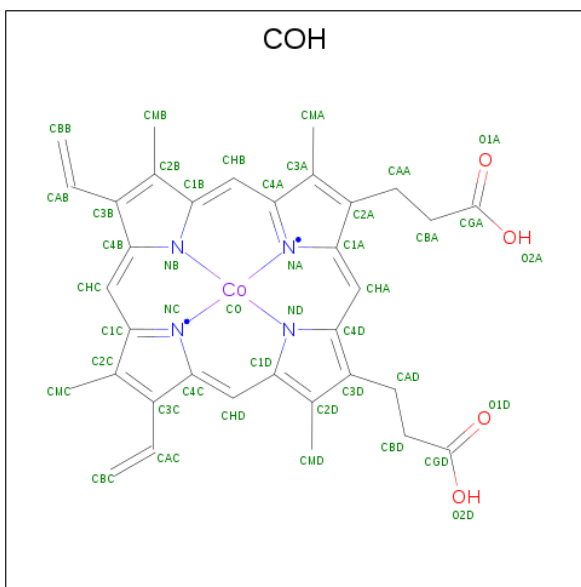
Mol	Chain	Residues	Atoms						ZeroOcc	AltConf	Trace
1	A	551	Total	C	H	N	O	S	77	0	0
			8825	2883	4355	755	806	26			
1	B	551	Total	C	H	N	O	S	243	0	0
			8826	2883	4356	755	806	26			

- Molecule 2 is 2-[(2,3-DIMETHYLPHENYL)AMINO]BENZOIC ACID (three-letter code: ID8) (formula: C₁₅H₁₅NO₂).



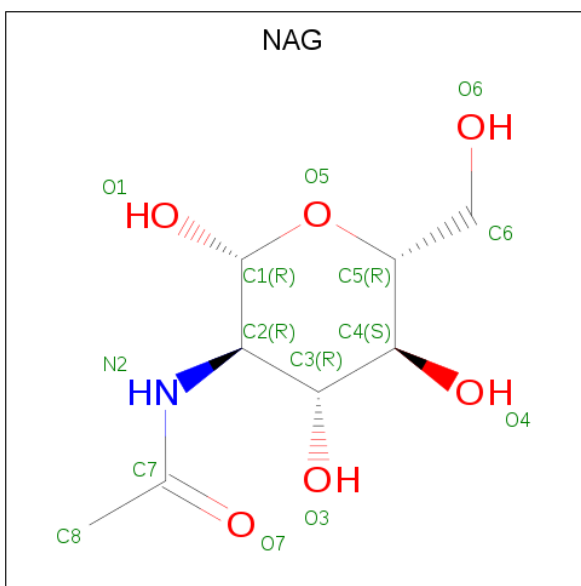
Mol	Chain	Residues	Atoms					ZeroOcc	AltConf
2	A	1	Total	C	H	N	O	0	0
			32	15	14	1	2		
2	B	1	Total	C	H	N	O	0	0
			32	15	14	1	2		

- Molecule 3 is PROTOPORPHYRIN IX CONTAINING CO (three-letter code: COH) (formula: C₃₄H₃₂CoN₄O₄).



Mol	Chain	Residues	Atoms						ZeroOcc	AltConf
3	A	1	Total 73	C 34	Co 1	H 30	N 4	O 4	0	0
3	B	1	Total 73	C 34	Co 1	H 30	N 4	O 4	0	0

- Molecule 4 is N-ACETYL-D-GLUCOSAMINE (three-letter code: NAG) (formula: $C_8H_{15}NO_6$).



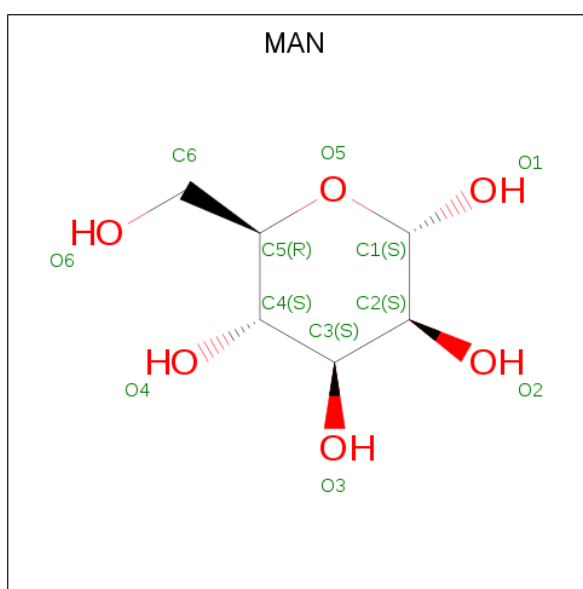
Mol	Chain	Residues	Atoms					ZeroOcc	AltConf
4	A	1	Total 28	C 8	H 14	N 1	O 5	0	0
4	A	1	Total 28	C 8	H 14	N 1	O 5	0	0

Continued on next page...

Continued from previous page...

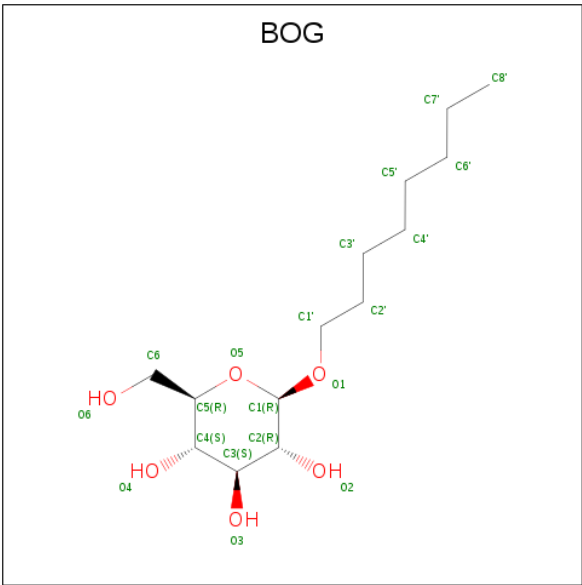
Mol	Chain	Residues	Atoms					ZeroOcc	AltConf
4	A	1	Total	C	H	N	O	0	0
			28	8	14	1	5		
4	B	1	Total	C	H	N	O	0	0
			28	8	14	1	5		
4	B	1	Total	C	H	N	O	0	0
			28	8	14	1	5		
4	B	1	Total	C	H	N	O	0	0
			28	8	14	1	5		

- Molecule 5 is ALPHA-D-MANNOSE (three-letter code: MAN) (formula: C₆H₁₂O₆).



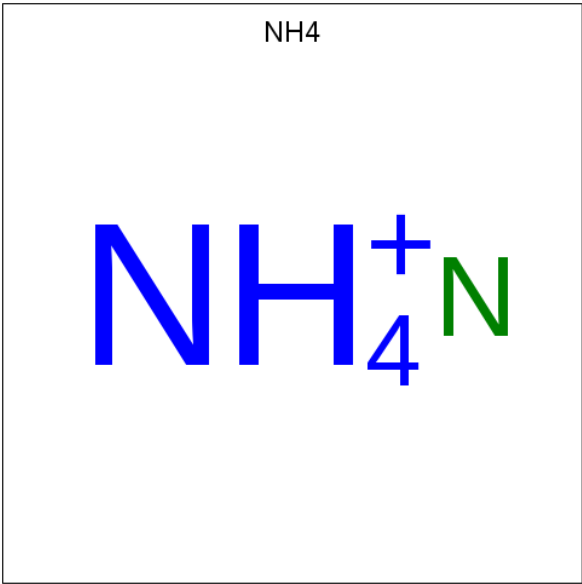
Mol	Chain	Residues	Atoms				ZeroOcc	AltConf
5	A	1	Total	C	H	O	0	0
			22	6	11	5		
5	B	1	Total	C	H	O	0	0
			22	6	11	5		

- Molecule 6 is B-OCTYLGLUCOSIDE (three-letter code: BOG) (formula: C₁₄H₂₈O₆).



Mol	Chain	Residues	Atoms				ZeroOcc	AltConf
6	A	1	Total	C	H	O	0	0
			48	14	28	6		
6	A	1	Total	C	H	O	0	0
			48	14	28	6		
6	A	1	Total	C	H	O	0	0
			48	14	28	6		
6	B	1	Total	C	H	O	0	0
			48	14	28	6		

- Molecule 7 is AMMONIUM ION (three-letter code: NH4) (formula: H₄N).



Mol	Chain	Residues	Atoms			ZeroOcc	AltConf
7	A	1	Total	H	N	0	0
			5	4	1		
7	A	1	Total	H	N	0	0
			5	4	1		
7	A	1	Total	H	N	0	0
			5	4	1		
7	B	1	Total	H	N	0	0
			5	4	1		
7	B	1	Total	H	N	0	0
			5	4	1		

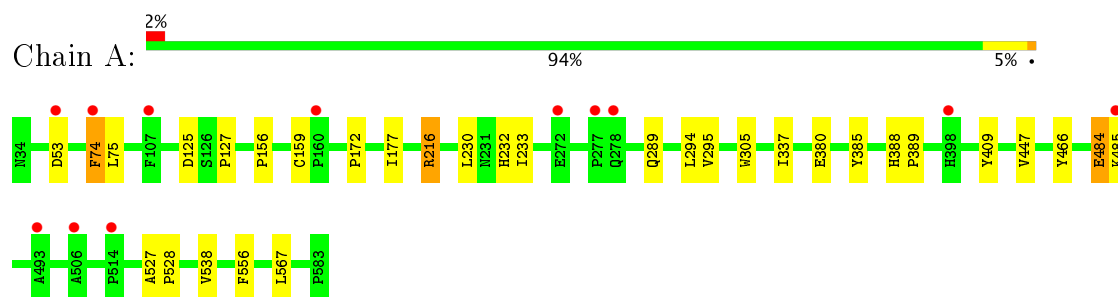
- Molecule 8 is water.

Mol	Chain	Residues	Atoms		ZeroOcc	AltConf
8	A	285	Total	O	0	0
			285	285		
8	B	206	Total	O	0	0
			206	206		

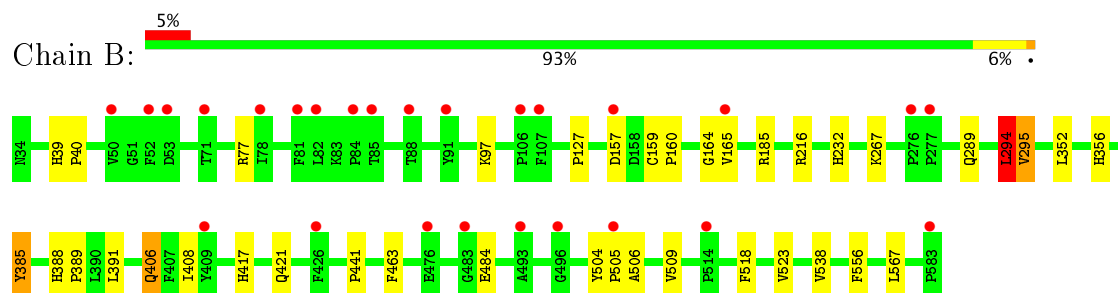
3 Residue-property plots [i](#)

These plots are drawn for all protein, RNA and DNA chains in the entry. The first graphic for a chain summarises the proportions of the various outlier classes displayed in the second graphic. The second graphic shows the sequence view annotated by issues in geometry and electron density. Residues are color-coded according to the number of geometric quality criteria for which they contain at least one outlier: green = 0, yellow = 1, orange = 2 and red = 3 or more. A red dot above a residue indicates a poor fit to the electron density ($RSRZ > 2$). Stretches of 2 or more consecutive residues without any outlier are shown as a green connector. Residues present in the sample, but not in the model, are shown in grey.

• Molecule 1: Prostaglandin G/H synthase 2



• Molecule 1: Prostaglandin G/H synthase 2



4 Data and refinement statistics

Property	Value	Source
Space group	I 2 2 2	Depositor
Cell constants a, b, c, α , β , γ	127.67Å 149.69Å 188.39Å 90.00° 90.00° 90.00°	Depositor
Resolution (Å)	20.00 – 2.34 19.99 – 2.34	Depositor EDS
% Data completeness (in resolution range)	95.4 (20.00-2.34) 95.4 (19.99-2.34)	Depositor EDS
R_{merge}	(Not available)	Depositor
R_{sym}	(Not available)	Depositor
$\langle I/\sigma(I) \rangle$ ¹	3.21 (at 2.35Å)	Xtriage
Refinement program	PHENIX 1.9_1692	Depositor
R, R_{free}	0.185 , 0.211 0.185 , 0.211	Depositor DCC
R_{free} test set	3579 reflections (4.95%)	DCC
Wilson B-factor (Å ²)	29.4	Xtriage
Anisotropy	0.072	Xtriage
Bulk solvent k_{sol} (e/Å ³), B_{sol} (Å ²)	0.41 , 53.7	EDS
L-test for twinning ²	$\langle L \rangle = 0.49$, $\langle L^2 \rangle = 0.32$	Xtriage
Estimated twinning fraction	No twinning to report.	Xtriage
F_o, F_c correlation	0.94	EDS
Total number of atoms	18781	wwPDB-VP
Average B, all atoms (Å ²)	46.0	wwPDB-VP

Xtriage's analysis on translational NCS is as follows: *The largest off-origin peak in the Patterson function is 3.28% of the height of the origin peak. No significant pseudotranslation is detected.*

¹Intensities estimated from amplitudes.

²Theoretical values of $\langle |L| \rangle$, $\langle L^2 \rangle$ for acentric reflections are 0.5, 0.333 respectively for untwinned datasets, and 0.375, 0.2 for perfectly twinned datasets.

5 Model quality [i](#)

5.1 Standard geometry [i](#)

Bond lengths and bond angles in the following residue types are not validated in this section: NAG, ID8, NH4, COH, MAN, BOG

The Z score for a bond length (or angle) is the number of standard deviations the observed value is removed from the expected value. A bond length (or angle) with $|Z| > 5$ is considered an outlier worth inspection. RMSZ is the root-mean-square of all Z scores of the bond lengths (or angles).

Mol	Chain	Bond lengths		Bond angles	
		RMSZ	# Z >5	RMSZ	# Z >5
1	A	0.25	0/4602	0.40	0/6241
1	B	0.30	0/4602	0.41	1/6241 (0.0%)
All	All	0.28	0/9204	0.40	1/12482 (0.0%)

There are no bond length outliers.

All (1) bond angle outliers are listed below:

Mol	Chain	Res	Type	Atoms	Z	Observed(°)	Ideal(°)
1	B	294	LEU	CA-CB-CG	5.07	126.96	115.30

There are no chirality outliers.

There are no planarity outliers.

5.2 Too-close contacts [i](#)

In the following table, the Non-H and H(model) columns list the number of non-hydrogen atoms and hydrogen atoms in the chain respectively. The H(added) column lists the number of hydrogen atoms added and optimized by MolProbity. The Clashes column lists the number of clashes within the asymmetric unit, whereas Symm-Clashes lists symmetry related clashes.

Mol	Chain	Non-H	H(model)	H(added)	Clashes	Symm-Clashes
1	A	4470	4355	4353	20	0
1	B	4470	4356	4353	33	0
2	A	18	14	14	2	0
2	B	18	14	14	6	0
3	A	43	30	30	2	0
3	B	43	30	30	3	0
4	A	42	42	37	5	0
4	B	42	42	36	7	0

Continued on next page...

Continued from previous page...

Mol	Chain	Non-H	H(model)	H(added)	Clashes	Symm-Clashes
5	A	11	11	10	0	0
5	B	11	11	10	0	0
6	A	60	84	84	2	0
6	B	20	28	28	1	0
7	A	3	12	0	0	0
7	B	2	8	0	0	0
8	A	285	0	0	1	0
8	B	206	0	0	2	0
All	All	9744	9037	8999	62	0

The all-atom clashscore is defined as the number of clashes found per 1000 atoms (including hydrogen atoms). The all-atom clashscore for this structure is 3.

All (62) close contacts within the same asymmetric unit are listed below, sorted by their clash magnitude.

Atom-1	Atom-2	Interatomic distance (Å)	Clash overlap (Å)
1:B:216:ARG:HH11	4:B:605:NAG:H83	1.28	0.97
1:B:216:ARG:HH11	4:B:605:NAG:C8	1.83	0.90
1:B:216:ARG:NH1	4:B:605:NAG:H83	1.91	0.85
1:A:216:ARG:HD3	4:A:604:NAG:H81	1.63	0.80
1:A:216:ARG:HH11	4:A:604:NAG:H83	1.54	0.73
1:B:216:ARG:NH2	8:B:701:HOH:O	2.13	0.70
1:B:216:ARG:HD3	4:B:605:NAG:H81	1.77	0.67
3:B:603:COH:HHC	3:B:603:COH:HBB1	1.78	0.65
3:A:602:COH:HBB1	3:A:602:COH:HHC	1.79	0.64
1:B:185:ARG:NH1	8:B:704:HOH:O	2.34	0.59
1:B:160:PRO:HG2	1:B:165:VAL:HA	1.85	0.59
3:B:603:COH:HMC1	3:B:603:COH:HBC1	1.86	0.58
3:A:602:COH:HMC1	3:A:602:COH:HBC1	1.86	0.57
1:B:160:PRO:CG	1:B:165:VAL:HG12	2.35	0.56
1:B:216:ARG:HD3	4:B:605:NAG:C8	2.38	0.53
1:B:388:HIS:N	1:B:389:PRO:HD2	2.25	0.51
1:B:159:CYS:HB3	1:B:164:GLY:O	2.11	0.49
2:B:602:ID8:C5	2:B:602:ID8:H9	2.43	0.49
1:A:216:ARG:HH11	4:A:604:NAG:C8	2.26	0.48
1:B:523:VAL:HG13	2:B:602:ID8:C4	2.43	0.48
1:B:294:LEU:HD22	1:B:408:ILE:HG23	1.96	0.48
1:B:216:ARG:HH11	4:B:605:NAG:H81	1.76	0.48
1:B:391:LEU:HB2	1:B:441:PRO:HG2	1.95	0.47
1:B:504:TYR:HB3	1:B:505:PRO:HD3	1.96	0.47
1:A:216:ARG:CD	4:A:604:NAG:H81	2.38	0.47

Continued on next page...

Continued from previous page...

Atom-1	Atom-2	Interatomic distance (Å)	Clash overlap (Å)
1:A:53:ASP:OD1	1:A:53:ASP:N	2.48	0.47
1:B:160:PRO:HG2	1:B:165:VAL:HG12	1.96	0.46
1:B:160:PRO:HG3	1:B:165:VAL:HG12	1.97	0.45
2:A:601:ID8:H9	2:A:601:ID8:C5	2.46	0.45
1:A:125:ASP:OD2	8:A:701:HOH:O	2.21	0.45
1:B:352:LEU:HD11	1:B:518:PHE:CE2	2.52	0.44
3:B:603:COH:HBA2	3:B:603:COH:HMA2	2.00	0.44
1:B:216:ARG:NH1	4:B:605:NAG:C8	2.63	0.44
1:A:527:ALA:HB3	1:A:528:PRO:HD3	1.99	0.44
1:A:567:LEU:HA	6:A:609:BOG:H8'1	1.98	0.44
1:B:417:HIS:HB3	1:B:421:GLN:HG2	2.01	0.43
1:A:294:LEU:HA	1:A:409:TYR:CE1	2.53	0.43
1:B:506:ALA:HA	1:B:509:VAL:HG22	2.01	0.43
1:B:567:LEU:HA	6:B:601:BOG:H8'1	2.00	0.43
1:A:388:HIS:CE1	1:A:447:VAL:HG11	2.53	0.43
1:B:39:HIS:N	1:B:40:PRO:HD3	2.33	0.43
6:A:609:BOG:H1	6:A:609:BOG:H2'1	1.91	0.43
1:B:523:VAL:HG13	2:B:602:ID8:H4	2.01	0.43
1:A:388:HIS:N	1:A:389:PRO:CD	2.82	0.42
1:A:484:GLU:HG2	1:A:485:LYS:H	1.84	0.42
2:B:602:ID8:C9	2:B:602:ID8:C5	2.96	0.42
1:A:380:GLU:HG2	1:A:466:TYR:CE1	2.55	0.42
2:B:602:ID8:C9	2:B:602:ID8:H5	2.50	0.42
1:B:463:PHE:CD1	1:B:506:ALA:HB3	2.56	0.41
1:A:216:ARG:HD3	4:A:604:NAG:C8	2.41	0.41
1:A:127:PRO:HB2	1:B:538:VAL:HG23	2.03	0.41
1:B:294:LEU:HD13	1:B:295:VAL:HG13	2.02	0.41
1:A:538:VAL:HG23	1:B:127:PRO:HG2	2.02	0.41
1:B:160:PRO:HG2	1:B:164:GLY:O	2.21	0.41
1:B:406:GLN:HE21	1:B:406:GLN:HB3	1.77	0.41
1:B:97:LYS:HG3	1:B:356:HIS:CE1	2.56	0.41
1:A:230:LEU:HG	1:A:337:ILE:HG12	2.03	0.41
1:A:156:PRO:HG2	1:A:159:CYS:SG	2.61	0.40
1:A:172:PRO:HG2	1:A:177:ILE:HD11	2.03	0.40
1:A:233:ILE:HD13	1:A:305:TRP:HB3	2.04	0.40
2:A:601:ID8:C9	2:A:601:ID8:C5	2.96	0.40
1:B:385:TYR:CE1	2:B:602:ID8:H12	2.57	0.40

There are no symmetry-related clashes.

5.3 Torsion angles [i](#)

5.3.1 Protein backbone [i](#)

In the following table, the Percentiles column shows the percent Ramachandran outliers of the chain as a percentile score with respect to all X-ray entries followed by that with respect to entries of similar resolution.

The Analysed column shows the number of residues for which the backbone conformation was analysed, and the total number of residues.

Mol	Chain	Analysed	Favoured	Allowed	Outliers	Percentiles	
1	A	549/551 (100%)	533 (97%)	15 (3%)	1 (0%)	51	59
1	B	549/551 (100%)	530 (96%)	19 (4%)	0	100	100
All	All	1098/1102 (100%)	1063 (97%)	34 (3%)	1 (0%)	55	65

All (1) Ramachandran outliers are listed below:

Mol	Chain	Res	Type
1	A	74	PHE

5.3.2 Protein sidechains [i](#)

In the following table, the Percentiles column shows the percent sidechain outliers of the chain as a percentile score with respect to all X-ray entries followed by that with respect to entries of similar resolution.

The Analysed column shows the number of residues for which the sidechain conformation was analysed, and the total number of residues.

Mol	Chain	Analysed	Rotameric	Outliers	Percentiles	
1	A	490/490 (100%)	481 (98%)	9 (2%)	64	76
1	B	490/490 (100%)	479 (98%)	11 (2%)	57	70
All	All	980/980 (100%)	960 (98%)	20 (2%)	60	73

All (20) residues with a non-rotameric sidechain are listed below:

Mol	Chain	Res	Type
1	A	74	PHE
1	A	75	LEU
1	A	216	ARG
1	A	232	HIS
1	A	289	GLN

Continued on next page...

Continued from previous page...

Mol	Chain	Res	Type
1	A	295	VAL
1	A	385	TYR
1	A	484	GLU
1	A	556	PHE
1	B	77	ARG
1	B	157	ASP
1	B	232	HIS
1	B	267	LYS
1	B	289	GLN
1	B	294	LEU
1	B	295	VAL
1	B	385	TYR
1	B	406	GLN
1	B	484	GLU
1	B	556	PHE

Some sidechains can be flipped to improve hydrogen bonding and reduce clashes. There are no such sidechains identified.

5.3.3 RNA ⓘ

There are no RNA molecules in this entry.

5.4 Non-standard residues in protein, DNA, RNA chains ⓘ

There are no non-standard protein/DNA/RNA residues in this entry.

5.5 Carbohydrates ⓘ

There are no carbohydrates in this entry.

5.6 Ligand geometry ⓘ

Of 21 ligands modelled in this entry, 5 are modelled with single atom - leaving 16 for Mogul analysis.

In the following table, the Counts columns list the number of bonds (or angles) for which Mogul statistics could be retrieved, the number of bonds (or angles) that are observed in the model and the number of bonds (or angles) that are defined in the chemical component dictionary. The Link column lists molecule types, if any, to which the group is linked. The Z score for a bond length (or angle) is the number of standard deviations the observed value is removed from the expected

value. A bond length (or angle) with $|Z| > 2$ is considered an outlier worth inspection. RMSZ is the root-mean-square of all Z scores of the bond lengths (or angles).

Mol	Type	Chain	Res	Link	Bond lengths			Bond angles		
					Counts	RMSZ	$\# Z > 2$	Counts	RMSZ	$\# Z > 2$
2	ID8	A	601	-	16,19,19	1.90	6 (37%)	22,26,26	1.08	1 (4%)
3	COH	A	602	1	28,50,50	4.47	21 (75%)	21,82,82	4.83	6 (28%)
4	NAG	A	603	1,4	14,14,15	0.34	0	15,19,21	0.55	0
4	NAG	A	604	5,4	14,14,15	0.35	0	15,19,21	0.63	0
5	MAN	A	605	4	11,11,12	0.95	1 (9%)	13,15,17	1.67	2 (15%)
4	NAG	A	606	1	14,14,15	0.20	0	15,19,21	0.54	0
6	BOG	A	607	-	20,20,20	1.19	2 (10%)	25,25,25	0.85	0
6	BOG	A	608	-	20,20,20	1.21	2 (10%)	25,25,25	0.80	0
6	BOG	A	609	-	20,20,20	1.16	2 (10%)	25,25,25	1.07	1 (4%)
6	BOG	B	601	-	20,20,20	1.17	2 (10%)	25,25,25	0.82	0
2	ID8	B	602	-	16,19,19	1.48	2 (12%)	22,26,26	1.41	2 (9%)
3	COH	B	603	1	28,50,50	4.46	21 (75%)	21,82,82	4.61	5 (23%)
4	NAG	B	604	1,4	14,14,15	0.30	0	15,19,21	0.55	0
4	NAG	B	605	5,4	14,14,15	0.28	0	15,19,21	0.60	0
5	MAN	B	606	4	11,11,12	0.94	1 (9%)	13,15,17	1.51	2 (15%)
4	NAG	B	607	1	14,14,15	0.19	0	15,19,21	0.50	0

In the following table, the Chirals column lists the number of chiral outliers, the number of chiral centers analysed, the number of these observed in the model and the number defined in the chemical component dictionary. Similar counts are reported in the Torsion and Rings columns. '-' means no outliers of that kind were identified.

Mol	Type	Chain	Res	Link	Chirals	Torsions	Rings
2	ID8	A	601	-	-	0/4/8/8	0/2/2/2
3	COH	A	602	1	-	0/8/94/94	0/0/8/8
4	NAG	A	603	1,4	-	0/6/23/26	0/1/1/1
4	NAG	A	604	5,4	-	0/6/23/26	0/1/1/1
5	MAN	A	605	4	-	0/2/19/22	1/1/1/1
4	NAG	A	606	1	-	0/6/23/26	0/1/1/1
6	BOG	A	607	-	-	0/11/31/31	0/1/1/1
6	BOG	A	608	-	-	0/11/31/31	0/1/1/1
6	BOG	A	609	-	-	0/11/31/31	0/1/1/1
6	BOG	B	601	-	-	0/11/31/31	0/1/1/1
2	ID8	B	602	-	-	0/4/8/8	0/2/2/2
3	COH	B	603	1	-	0/8/94/94	0/0/8/8
4	NAG	B	604	1,4	-	0/6/23/26	0/1/1/1
4	NAG	B	605	5,4	-	0/6/23/26	0/1/1/1
5	MAN	B	606	4	-	0/2/19/22	1/1/1/1

Continued on next page...

Continued from previous page...

Mol	Type	Chain	Res	Link	Chirals	Torsions	Rings
4	NAG	B	607	1	-	0/6/23/26	0/1/1/1

All (60) bond length outliers are listed below:

Mol	Chain	Res	Type	Atoms	Z	Observed(Å)	Ideal(Å)
3	A	602	COH	CHA-C1A	-8.08	1.37	1.53
3	B	603	COH	CHA-C1A	-7.74	1.38	1.53
3	A	602	COH	CHB-C4A	-7.70	1.38	1.53
3	B	603	COH	CHB-C4A	-7.69	1.38	1.53
3	B	603	COH	CHC-C1C	-7.64	1.38	1.53
3	B	603	COH	CHD-C4C	-7.60	1.38	1.53
3	A	602	COH	CHD-C4C	-7.59	1.38	1.53
3	A	602	COH	CHC-C1C	-7.46	1.39	1.53
3	A	602	COH	CHA-C4D	-5.64	1.37	1.51
3	B	603	COH	CHC-C4B	-5.38	1.38	1.51
3	B	603	COH	CHA-C4D	-5.36	1.38	1.51
3	B	603	COH	CHB-C1B	-5.31	1.38	1.51
3	A	602	COH	CHD-C1D	-5.31	1.38	1.51
3	A	602	COH	CHB-C1B	-5.29	1.38	1.51
3	A	602	COH	CHC-C4B	-5.29	1.38	1.51
3	B	603	COH	CHD-C1D	-5.23	1.38	1.51
3	A	602	COH	C3B-C2B	-4.31	1.34	1.40
3	B	603	COH	C3B-C2B	-4.21	1.34	1.40
3	A	602	COH	C4C-C3C	-3.49	1.45	1.51
3	B	603	COH	C4C-C3C	-3.36	1.45	1.51
2	A	601	ID8	C9-C8	-2.48	1.35	1.39
2	A	601	ID8	C8-N7	-2.48	1.33	1.39
2	A	601	ID8	C6-N7	-2.41	1.33	1.39
2	B	602	ID8	C8-N7	-2.15	1.34	1.39
2	A	601	ID8	C13-C8	-2.11	1.38	1.40
2	A	601	ID8	C3-C2	-2.07	1.35	1.39
2	B	602	ID8	C6-N7	-2.05	1.34	1.39
2	A	601	ID8	C10-C9	-2.02	1.35	1.38
3	A	602	COH	CO-NB	2.02	2.07	1.97
6	B	601	BOG	O2-C2	2.04	1.47	1.43
6	A	608	BOG	O2-C2	2.05	1.47	1.43
6	A	609	BOG	O2-C2	2.06	1.47	1.43
3	B	603	COH	CO-NB	2.08	2.08	1.97
6	A	607	BOG	O2-C2	2.10	1.47	1.43
3	B	603	COH	CAD-C3D	2.21	1.55	1.52
5	B	606	MAN	C1-C2	2.23	1.57	1.52
3	A	602	COH	CAD-C3D	2.27	1.55	1.52

Continued on next page...

Continued from previous page...

Mol	Chain	Res	Type	Atoms	Z	Observed(Å)	Ideal(Å)
3	B	603	COH	CO-ND	2.37	2.09	1.97
3	A	602	COH	CMA-C3A	2.50	1.54	1.50
5	A	605	MAN	C1-C2	2.52	1.58	1.52
3	B	603	COH	CMA-C3A	2.74	1.55	1.50
6	A	609	BOG	O5-C1	2.76	1.48	1.41
3	A	602	COH	CMC-C2C	2.82	1.55	1.50
3	A	602	COH	CAA-C2A	2.84	1.55	1.51
6	B	601	BOG	O5-C1	2.86	1.48	1.41
3	B	603	COH	CMC-C2C	2.88	1.55	1.50
3	A	602	COH	CO-ND	2.91	2.12	1.97
6	A	607	BOG	O5-C1	2.99	1.49	1.41
6	A	608	BOG	O5-C1	3.04	1.49	1.41
3	B	603	COH	CAA-C2A	3.31	1.55	1.51
3	A	602	COH	C3B-CAB	3.98	1.55	1.47
3	B	603	COH	C3B-CAB	4.14	1.56	1.47
3	A	602	COH	C4D-C3D	4.99	1.45	1.38
3	B	603	COH	C4D-C3D	5.16	1.45	1.38
3	A	602	COH	C1B-C2B	5.25	1.45	1.38
3	B	603	COH	C1B-C2B	5.26	1.45	1.38
3	B	603	COH	C1D-C2D	5.28	1.45	1.38
3	A	602	COH	C1D-C2D	5.40	1.45	1.38
3	A	602	COH	C3D-C2D	5.64	1.54	1.37
3	B	603	COH	C3D-C2D	5.71	1.54	1.37

All (19) bond angle outliers are listed below:

Mol	Chain	Res	Type	Atoms	Z	Observed(°)	Ideal(°)
2	B	602	ID8	C12-C13-C14	-3.79	114.40	120.23
5	A	605	MAN	O2-C2-C3	-3.32	103.65	110.17
6	A	609	BOG	C1-O5-C5	-3.29	107.52	113.72
5	B	606	MAN	O2-C2-C3	-3.09	104.10	110.17
3	A	602	COH	CBA-CAA-C2A	-2.87	109.04	114.28
2	A	601	ID8	C12-C13-C14	-2.71	116.07	120.23
2	B	602	ID8	C5-C6-C1	-2.05	118.24	121.34
3	B	603	COH	C4B-C3B-C2B	2.25	107.50	104.13
3	A	602	COH	C4B-C3B-C2B	2.41	107.73	104.13
5	B	606	MAN	C1-O5-C5	3.85	117.47	112.17
5	A	605	MAN	C1-O5-C5	4.16	117.90	112.17
3	B	603	COH	CHD-C4C-NC	9.90	124.83	110.17
3	B	603	COH	CHB-C4A-NA	9.93	124.88	110.17
3	A	602	COH	CHB-C4A-NA	10.16	125.20	110.17
3	A	602	COH	CHD-C4C-NC	10.48	125.68	110.17

Continued on next page...

Continued from previous page...

Mol	Chain	Res	Type	Atoms	Z	Observed($^{\circ}$)	Ideal($^{\circ}$)
3	B	603	COH	CHA-C1A-NA	10.51	125.72	110.17
3	B	603	COH	CHC-C1C-NC	10.84	126.21	110.17
3	A	602	COH	CHC-C1C-NC	10.91	126.33	110.17
3	A	602	COH	CHA-C1A-NA	11.14	126.67	110.17

There are no chirality outliers.

There are no torsion outliers.

All (2) ring outliers are listed below:

Mol	Chain	Res	Type	Atoms
5	A	605	MAN	C1-C2-C3-C4-C5-O5
5	B	606	MAN	C1-C2-C3-C4-C5-O5

8 monomers are involved in 28 short contacts:

Mol	Chain	Res	Type	Clashes	Symm-Clashes
2	A	601	ID8	2	0
3	A	602	COH	2	0
4	A	604	NAG	5	0
6	A	609	BOG	2	0
6	B	601	BOG	1	0
2	B	602	ID8	6	0
3	B	603	COH	3	0
4	B	605	NAG	7	0

5.7 Other polymers [i](#)

There are no such residues in this entry.

5.8 Polymer linkage issues [i](#)

There are no chain breaks in this entry.

6 Fit of model and data ⓘ

6.1 Protein, DNA and RNA chains ⓘ

In the following table, the column labelled ‘#RSRZ> 2’ contains the number (and percentage) of RSRZ outliers, followed by percent RSRZ outliers for the chain as percentile scores relative to all X-ray entries and entries of similar resolution. The OWAB column contains the minimum, median, 95th percentile and maximum values of the occupancy-weighted average B-factor per residue. The column labelled ‘Q< 0.9’ lists the number of (and percentage) of residues with an average occupancy less than 0.9.

Mol	Chain	Analysed	<RSRZ>	#RSRZ>2	OWAB(Å ²)	Q<0.9
1	A	551/551 (100%)	-0.11	12 (2%) 62 72	14, 34, 58, 83	9 (1%)
1	B	551/551 (100%)	0.17	26 (4%) 32 43	18, 48, 78, 94	25 (4%)
All	All	1102/1102 (100%)	0.03	38 (3%) 46 56	14, 39, 73, 94	34 (3%)

All (38) RSRZ outliers are listed below:

Mol	Chain	Res	Type	RSRZ
1	B	483	GLY	4.3
1	B	107	PHE	4.1
1	A	74	PHE	4.1
1	B	82	LEU	3.8
1	B	496	GLY	3.5
1	B	514	PRO	3.4
1	B	277	PRO	3.1
1	B	81	PHE	3.1
1	B	84	PRO	3.0
1	B	157	ASP	2.9
1	B	85	THR	2.9
1	A	277	PRO	2.8
1	B	276	PRO	2.8
1	B	106	PRO	2.7
1	B	91	TYR	2.7
1	A	107	PHE	2.7
1	B	583	PRO	2.6
1	B	53	ASP	2.6
1	A	278	GLN	2.5
1	A	493	ALA	2.5
1	A	53	ASP	2.4
1	B	409	TYR	2.3
1	B	426	PHE	2.3
1	B	52	PHE	2.3

Continued on next page...

Continued from previous page...

Mol	Chain	Res	Type	RSRZ
1	A	514	PRO	2.3
1	A	160	PRO	2.3
1	B	88	THR	2.2
1	B	165	VAL	2.2
1	B	50	VAL	2.2
1	B	78	ILE	2.1
1	B	476	GLU	2.1
1	B	505	PRO	2.1
1	A	506	ALA	2.1
1	A	398	HIS	2.1
1	A	272	GLU	2.0
1	B	71	THR	2.0
1	B	493	ALA	2.0
1	A	485	LYS	2.0

6.2 Non-standard residues in protein, DNA, RNA chains [i](#)

There are no non-standard protein/DNA/RNA residues in this entry.

6.3 Carbohydrates [i](#)

There are no carbohydrates in this entry.

6.4 Ligands [i](#)

In the following table, the Atoms column lists the number of modelled atoms in the group and the number defined in the chemical component dictionary. LLDF column lists the quality of electron density of the group with respect to its neighbouring residues in protein, DNA or RNA chains. The B-factors column lists the minimum, median, 95th percentile and maximum values of B factors of atoms in the group. The column labelled 'Q< 0.9' lists the number of atoms with occupancy less than 0.9.

Mol	Type	Chain	Res	Atoms	RSCC	RSR	LLDF	B-factors(Å ²)	Q<0.9
6	BOG	B	601	20/20	0.61	0.39	6.94	32,113,149,154	0
6	BOG	A	609	20/20	0.63	0.44	5.16	30,134,181,187	0
6	BOG	A	607	20/20	0.68	0.25	3.18	38,103,134,204	0
7	NH4	B	608	1/1	0.93	0.29	2.59	27,33,33,33	0
7	NH4	A	610	1/1	0.93	0.26	1.03	24,29,29,29	0
4	NAG	B	607	14/15	0.89	0.23	0.97	54,71,86,86	0
4	NAG	A	606	14/15	0.90	0.20	0.95	33,47,57,59	0

Continued on next page...

Continued from previous page...

Mol	Type	Chain	Res	Atoms	RSCC	RSR	LLDF	B-factors(\AA^2)	Q<0.9
3	COH	A	602	43/43	0.92	0.16	0.73	24,50,73,79	0
6	BOG	A	608	20/20	0.82	0.19	0.52	38,100,124,124	0
7	NH4	A	611	1/1	0.79	0.20	0.52	35,43,43,43	0
3	COH	B	603	43/43	0.92	0.16	0.29	36,72,88,94	0
2	ID8	B	602	18/18	0.96	0.11	-0.30	30,37,45,47	0
2	ID8	A	601	18/18	0.97	0.09	-0.86	14,22,28,29	0
4	NAG	B	604	14/15	0.95	0.10	-0.94	24,31,36,42	0
4	NAG	A	603	14/15	0.97	0.08	-1.43	18,25,34,43	0
5	MAN	B	606	11/12	0.72	0.35	-	61,74,88,95	0
5	MAN	A	605	11/12	0.79	0.27	-	62,76,91,95	0
4	NAG	A	604	14/15	0.89	0.27	-	31,48,61,74	0
7	NH4	A	612	1/1	0.93	0.21	-	32,39,39,39	0
7	NH4	B	609	1/1	0.89	0.23	-	48,58,58,58	0
4	NAG	B	605	14/15	0.91	0.23	-	32,45,56,68	0

6.5 Other polymers [i](#)

There are no such residues in this entry.