



# Full wwPDB X-ray Structure Validation Report ⓘ

Oct 10, 2017 – 02:54 AM EDT

PDB ID : 2IL2  
Title : Crystal Structure of Human Renin Complexed with Inhibitor  
Authors : Mochalkin, I.  
Deposited on : unknown  
Resolution : 2.24 Å(reported)

This is a Full wwPDB X-ray Structure Validation Report for a publicly released PDB entry.

We welcome your comments at [validation@mail.wwpdb.org](mailto:validation@mail.wwpdb.org)

A user guide is available at

<http://wwpdb.org/validation/2016/XrayValidationReportHelp>

with specific help available everywhere you see the ⓘ symbol.

---

The following versions of software and data (see [references ⓘ](#)) were used in the production of this report:

MolProbity : 4.02b-467  
Mogul : 1.7.2 (RC1), CSD as538be (2017)  
Xtriage (Phenix) : 1.9-1692  
EDS : rb-20030345  
Percentile statistics : 20161228.v01 (using entries in the PDB archive December 28th 2016)  
Refmac : 5.8.0135  
CCP4 : 6.5.0  
Ideal geometry (proteins) : Engh & Huber (2001)  
Ideal geometry (DNA, RNA) : Parkinson et al. (1996)  
Validation Pipeline (wwPDB-VP) : rb-20030345

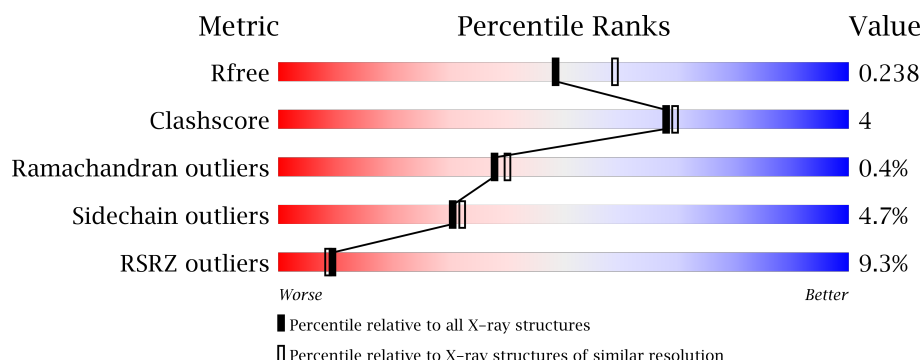
# 1 Overall quality at a glance ⓘ

The following experimental techniques were used to determine the structure:

## *X-RAY DIFFRACTION*

The reported resolution of this entry is 2.24 Å.

Percentile scores (ranging between 0-100) for global validation metrics of the entry are shown in the following graphic. The table shows the number of entries on which the scores are based.



Metric	Whole archive (#Entries)	Similar resolution (#Entries, resolution range(Å))
$R_{free}$	100719	1804 (2.26-2.22)
Clashscore	112137	1957 (2.26-2.22)
Ramachandran outliers	110173	1916 (2.26-2.22)
Sidechain outliers	110143	1917 (2.26-2.22)
RSRZ outliers	101464	1809 (2.26-2.22)

The table below summarises the geometric issues observed across the polymeric chains and their fit to the electron density. The red, orange, yellow and green segments on the lower bar indicate the fraction of residues that contain outliers for  $\geq 3$ , 2, 1 and 0 types of geometric quality criteria. A grey segment represents the fraction of residues that are not modelled. The numeric value for each fraction is indicated below the corresponding segment, with a dot representing fractions  $\leq 5\%$ . The upper red bar (where present) indicates the fraction of residues that have poor fit to the electron density. The numeric value is given above the bar.

Mol	Chain	Length	Quality of chain
1	A	340	<div> <div>6%</div> <div>88%</div> <div>10%</div> <div>..</div> </div>
1	B	340	<div> <div>12%</div> <div>86%</div> <div>11%</div> <div>...</div> </div>

The following table lists non-polymeric compounds, carbohydrate monomers and non-standard residues in protein, DNA, RNA chains that are outliers for geometric or electron-density-fit criteria:

Mol	Type	Chain	Res	Chirality	Geometry	Clashes	Electron density
3	CIT	A	501	-	-	-	X

## 2 Entry composition [i](#)

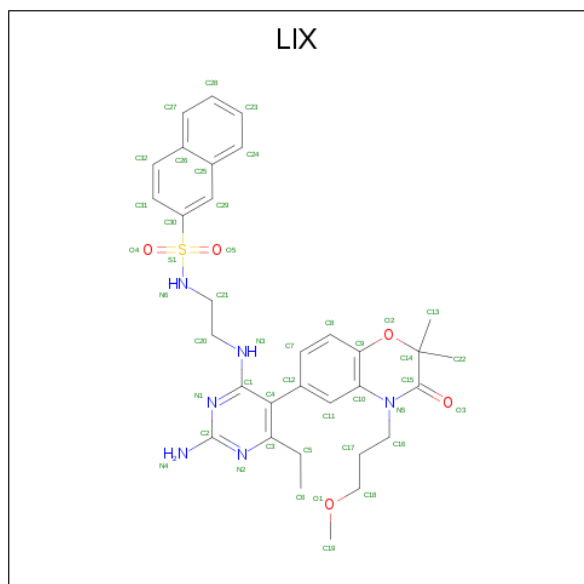
There are 4 unique types of molecules in this entry. The entry contains 5561 atoms, of which 0 are hydrogens and 0 are deuteriums.

In the tables below, the ZeroOcc column contains the number of atoms modelled with zero occupancy, the AltConf column contains the number of residues with at least one atom in alternate conformation and the Trace column contains the number of residues modelled with at most 2 atoms.

- Molecule 1 is a protein called Renin.

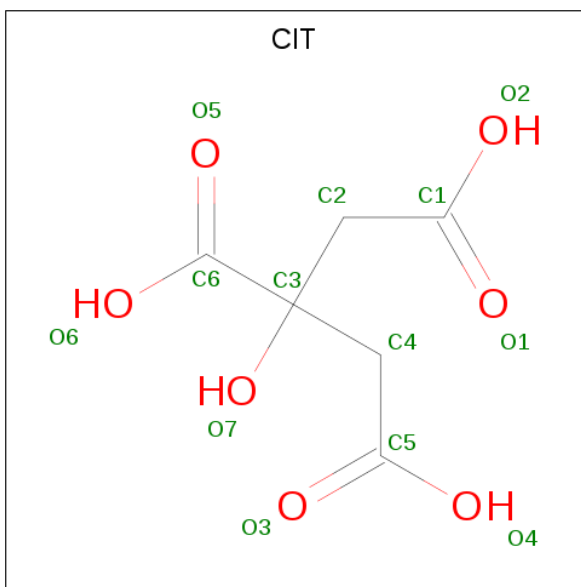
Mol	Chain	Residues	Atoms					ZeroOcc	AltConf	Trace
1	A	338	Total	C	N	O	S	0	0	0
			2606	1662	422	508	14			
1	B	338	Total	C	N	O	S	6	1	0
			2612	1666	422	510	14			

- Molecule 2 is N-[2-({2-AMINO-6-ETHYL-5-[4-(3-METHOXYPROPYL)-2,2-DIMETHYL-3-  
-OXO-3,4-DIHYDRO-2H-1,4-BENZOXAZIN-6-YL]PYRIMIDIN-4-YL}AMINO)ETHYL]N  
APHTHALENE-2-SULFONAMIDE (three-letter code: LIX) (formula: C<sub>32</sub>H<sub>38</sub>N<sub>6</sub>O<sub>5</sub>S).



Mol	Chain	Residues	Atoms					ZeroOcc	AltConf
2	A	1	Total	C	N	O	S	0	0
			44	32	6	5	1		
2	B	1	Total	C	N	O	S	0	0
			44	32	6	5	1		

- Molecule 3 is CITRIC ACID (three-letter code: CIT) (formula: C<sub>6</sub>H<sub>8</sub>O<sub>7</sub>).



Mol	Chain	Residues	Atoms			ZeroOcc	AltConf
3	A	1	Total	C	O	0	0
			13	6	7		

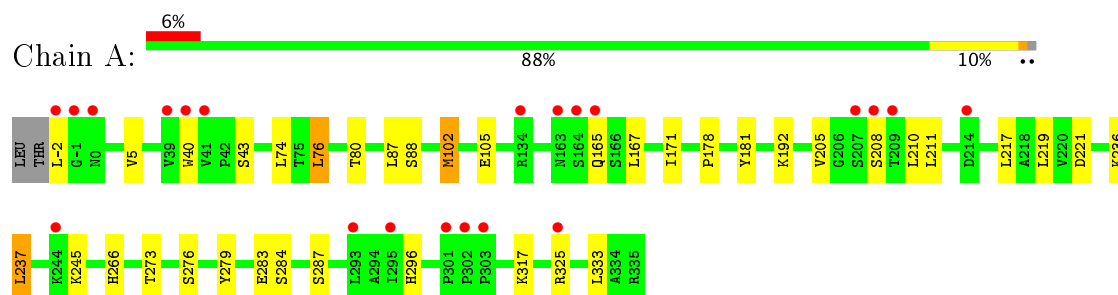
- Molecule 4 is water.

Mol	Chain	Residues	Atoms		ZeroOcc	AltConf
4	A	140	Total	O	0	0
			140	140		
4	B	102	Total	O	0	0
			102	102		

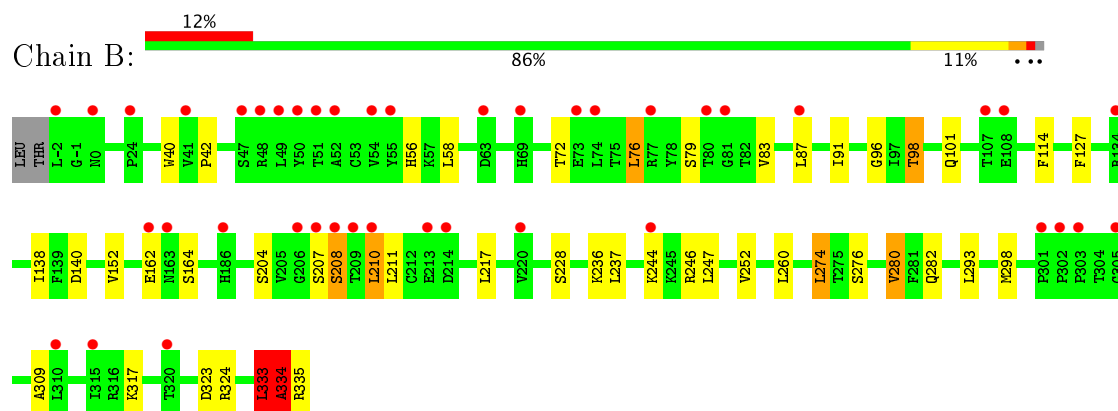
### 3 Residue-property plots [i](#)

These plots are drawn for all protein, RNA and DNA chains in the entry. The first graphic for a chain summarises the proportions of the various outlier classes displayed in the second graphic. The second graphic shows the sequence view annotated by issues in geometry and electron density. Residues are color-coded according to the number of geometric quality criteria for which they contain at least one outlier: green = 0, yellow = 1, orange = 2 and red = 3 or more. A red dot above a residue indicates a poor fit to the electron density ( $RSRZ > 2$ ). Stretches of 2 or more consecutive residues without any outlier are shown as a green connector. Residues present in the sample, but not in the model, are shown in grey.

#### • Molecule 1: Renin



#### • Molecule 1: Renin



## 4 Data and refinement statistics

Property	Value	Source
Space group	P 21 3	Depositor
Cell constants a, b, c, $\alpha$ , $\beta$ , $\gamma$	141.53Å 141.53Å 141.53Å 90.00° 90.00° 90.00°	Depositor
Resolution (Å)	20.00 – 2.24 19.82 – 2.24	Depositor EDS
% Data completeness (in resolution range)	99.7 (20.00-2.24) 99.7 (19.82-2.24)	Depositor EDS
$R_{merge}$	0.07	Depositor
$R_{sym}$	(Not available)	Depositor
$\langle I/\sigma(I) \rangle$ <sup>1</sup>	6.12 (at 2.23Å)	Xtriage
Refinement program	REFMAC	Depositor
R, $R_{free}$	0.206 , 0.242 0.204 , 0.238	Depositor DCC
$R_{free}$ test set	2281 reflections (5.32%)	DCC
Wilson B-factor (Å <sup>2</sup> )	45.1	Xtriage
Anisotropy	0.000	Xtriage
Bulk solvent $k_{sol}$ (e/Å <sup>3</sup> ), $B_{sol}$ (Å <sup>2</sup> )	0.33 , 37.7	EDS
L-test for twinning <sup>2</sup>	$\langle  L  \rangle = 0.51$ , $\langle L^2 \rangle = 0.35$	Xtriage
Estimated twinning fraction	0.019 for l,-k,h	Xtriage
$F_o, F_c$ correlation	0.94	EDS
Total number of atoms	5561	wwPDB-VP
Average B, all atoms (Å <sup>2</sup> )	47.0	wwPDB-VP

Xtriage's analysis on translational NCS is as follows: *The largest off-origin peak in the Patterson function is 2.41% of the height of the origin peak. No significant pseudotranslation is detected.*

<sup>1</sup>Intensities estimated from amplitudes.

<sup>2</sup>Theoretical values of  $\langle |L| \rangle$ ,  $\langle L^2 \rangle$  for acentric reflections are 0.5, 0.333 respectively for untwinned datasets, and 0.375, 0.2 for perfectly twinned datasets.

## 5 Model quality [i](#)

### 5.1 Standard geometry [i](#)

Bond lengths and bond angles in the following residue types are not validated in this section: LIX, CIT

The Z score for a bond length (or angle) is the number of standard deviations the observed value is removed from the expected value. A bond length (or angle) with  $|Z| > 5$  is considered an outlier worth inspection. RMSZ is the root-mean-square of all Z scores of the bond lengths (or angles).

Mol	Chain	Bond lengths		Bond angles	
		RMSZ	$\# Z  > 5$	RMSZ	$\# Z  > 5$
1	A	0.59	0/2666	0.68	0/3615
1	B	0.56	0/2675	0.69	1/3627 (0.0%)
All	All	0.58	0/5341	0.69	1/7242 (0.0%)

Chiral center outliers are detected by calculating the chiral volume of a chiral center and verifying if the center is modelled as a planar moiety or with the opposite hand. A planarity outlier is detected by checking planarity of atoms in a peptide group, atoms in a mainchain group or atoms of a sidechain that are expected to be planar.

Mol	Chain	#Chirality outliers	#Planarity outliers
1	B	0	3

There are no bond length outliers.

All (1) bond angle outliers are listed below:

Mol	Chain	Res	Type	Atoms	Z	Observed( $^{\circ}$ )	Ideal( $^{\circ}$ )
1	B	210	LEU	CA-CB-CG	5.49	127.92	115.30

There are no chirality outliers.

All (3) planarity outliers are listed below:

Mol	Chain	Res	Type	Group
1	B	333	LEU	Peptide
1	B	334	ALA	Peptide
1	B	96	GLY	Peptide



## 5.2 Too-close contacts ⓘ

In the following table, the Non-H and H(model) columns list the number of non-hydrogen atoms and hydrogen atoms in the chain respectively. The H(added) column lists the number of hydrogen atoms added and optimized by MolProbity. The Clashes column lists the number of clashes within the asymmetric unit, whereas Symm-Clashes lists symmetry related clashes.

Mol	Chain	Non-H	H(model)	H(added)	Clashes	Symm-Clashes
1	A	2606	0	2538	20	0
1	B	2612	0	2544	27	0
2	A	44	0	38	1	0
2	B	44	0	38	1	0
3	A	13	0	5	0	0
4	A	140	0	0	0	0
4	B	102	0	0	2	0
All	All	5561	0	5163	46	0

The all-atom clashscore is defined as the number of clashes found per 1000 atoms (including hydrogen atoms). The all-atom clashscore for this structure is 4.

All (46) close contacts within the same asymmetric unit are listed below, sorted by their clash magnitude.

Atom-1	Atom-2	Interatomic distance (Å)	Clash overlap (Å)
1:B:334:ALA:HB1	1:B:335:ARG:HA	1.40	1.04
1:A:208:SER:OG	1:A:210:LEU:HD23	1.74	0.85
1:A:88:SER:O	1:A:102:MET:HE3	1.79	0.80
1:B:334:ALA:HB1	1:B:335:ARG:CA	2.11	0.79
1:B:334:ALA:CB	1:B:335:ARG:CA	2.70	0.70
1:A:205:VAL:HG21	1:A:237:LEU:HD23	1.77	0.66
1:B:334:ALA:HA	4:B:419:HOH:O	1.96	0.65
1:A:80:THR:HG21	2:A:401:LIX:H29	1.80	0.63
1:B:91:ILE:HG23	1:B:98:THR:HG23	1.80	0.63
1:B:91:ILE:CG2	1:B:98:THR:HG23	2.29	0.62
1:B:276:SER:O	1:B:280:VAL:HG13	2.02	0.60
1:B:334:ALA:HB3	1:B:335:ARG:HB3	1.84	0.59
1:B:252:VAL:HG11	1:B:260:LEU:HD11	1.87	0.55
1:A:87:LEU:HB3	1:A:102:MET:HE2	1.88	0.55
1:B:210:LEU:HD12	1:B:211:LEU:HG	1.88	0.54
1:A:273:THR:O	1:A:317:LYS:NZ	2.40	0.54
1:B:83:VAL:HG13	1:B:114:PHE:CE1	2.44	0.53
1:B:56:HIS:HE1	1:B:114:PHE:O	1.92	0.52
1:A:210:LEU:HD12	1:A:211:LEU:HG	1.91	0.52
1:A:219:LEU:HD23	1:A:221:ASP:HB2	1.90	0.52

*Continued on next page...*

*Continued from previous page...*

Atom-1	Atom-2	Interatomic distance (Å)	Clash overlap (Å)
1:A:283:GLU:O	1:B:162:GLU:HB3	2.10	0.51
1:B:280:VAL:HB	1:B:293:LEU:HD22	1.93	0.50
1:A:-2:LEU:HD13	1:A:325:ARG:NH1	2.27	0.49
1:A:87:LEU:HB3	1:A:102:MET:CE	2.43	0.49
1:B:333:LEU:HD22	4:B:419:HOH:O	2.12	0.49
1:B:274:LEU:HD22	1:B:317:LYS:HG2	1.95	0.49
1:B:280:VAL:HG22	1:B:282:GLN:HG2	1.95	0.48
1:B:40:TRP:CD1	1:B:76:LEU:HD23	2.48	0.48
1:A:211:LEU:HD21	1:A:236:LYS:HG2	1.96	0.48
1:B:207:SER:O	1:B:208:SER:HB3	2.14	0.48
1:A:178:PRO:HA	1:A:181:TYR:CE1	2.50	0.47
1:B:72:THR:HB	1:B:87:LEU:HD12	1.96	0.47
1:B:211:LEU:HD21	1:B:236:LYS:HG2	1.97	0.46
1:B:152:VAL:HG12	1:B:323:ASP:HA	1.96	0.46
1:A:43:SER:HB2	1:A:105:GLU:HB3	1.98	0.46
1:B:298:MET:HE2	2:B:402:LIX:C31	2.46	0.45
1:A:88:SER:C	1:A:102:MET:HE3	2.37	0.45
1:B:42:PRO:HB2	1:B:58:LEU:HD23	2.00	0.43
1:A:88:SER:O	1:A:102:MET:CE	2.59	0.42
1:A:276:SER:HA	1:A:279:TYR:CE2	2.54	0.42
1:A:208:SER:HG	1:A:210:LEU:HD23	1.79	0.41
1:B:228:SER:OG	1:B:309:ALA:HB3	2.19	0.41
1:B:127:PHE:CE2	1:B:324:ARG:HD3	2.56	0.41
1:B:101:GLN:OE1	1:B:138:ILE:HA	2.20	0.41
1:A:5:VAL:HB	1:A:171:ILE:HG23	2.02	0.41
1:A:40:TRP:CD1	1:A:76:LEU:HD23	2.56	0.41

There are no symmetry-related clashes.

## 5.3 Torsion angles [i](#)

### 5.3.1 Protein backbone [i](#)

In the following table, the Percentiles column shows the percent Ramachandran outliers of the chain as a percentile score with respect to all X-ray entries followed by that with respect to entries of similar resolution.

The Analysed column shows the number of residues for which the backbone conformation was analysed, and the total number of residues.

Mol	Chain	Analysed	Favoured	Allowed	Outliers	Percentiles	
1	A	336/340 (99%)	329 (98%)	7 (2%)	0	100	100
1	B	337/340 (99%)	325 (96%)	9 (3%)	3 (1%)	20	16
All	All	673/680 (99%)	654 (97%)	16 (2%)	3 (0%)	38	40

All (3) Ramachandran outliers are listed below:

Mol	Chain	Res	Type
1	B	208	SER
1	B	246	ARG
1	B	334	ALA

### 5.3.2 Protein sidechains ⓘ

In the following table, the Percentiles column shows the percent sidechain outliers of the chain as a percentile score with respect to all X-ray entries followed by that with respect to entries of similar resolution.

The Analysed column shows the number of residues for which the sidechain conformation was analysed, and the total number of residues.

Mol	Chain	Analysed	Rotameric	Outliers	Percentiles	
1	A	288/290 (99%)	274 (95%)	14 (5%)	29	30
1	B	289/290 (100%)	276 (96%)	13 (4%)	32	34
All	All	577/580 (100%)	550 (95%)	27 (5%)	30	32

All (27) residues with a non-rotameric sidechain are listed below:

Mol	Chain	Res	Type
1	A	74	LEU
1	A	76	LEU
1	A	102	MET
1	A	165	GLN
1	A	167	LEU
1	A	192	LYS
1	A	217	LEU
1	A	237	LEU
1	A	245	LYS
1	A	266	HIS
1	A	284	SER
1	A	287	SER
1	A	296	HIS

*Continued on next page...*

*Continued from previous page...*

Mol	Chain	Res	Type
1	A	333	LEU
1	B	76	LEU
1	B	79	SER
1	B	98	THR
1	B	140	ASP
1	B	164	SER
1	B	204	SER
1	B	217	LEU
1	B	237	LEU
1	B	244	LYS
1	B	247	LEU
1	B	274	LEU
1	B	280	VAL
1	B	333	LEU

Some sidechains can be flipped to improve hydrogen bonding and reduce clashes. All (8) such sidechains are listed below:

Mol	Chain	Res	Type
1	A	141	ASN
1	A	189	ASN
1	A	199	GLN
1	B	70	ASN
1	B	141	ASN
1	B	170	GLN
1	B	189	ASN
1	B	296	HIS

### 5.3.3 RNA ⓘ

There are no RNA molecules in this entry.

## 5.4 Non-standard residues in protein, DNA, RNA chains ⓘ

There are no non-standard protein/DNA/RNA residues in this entry.

## 5.5 Carbohydrates ⓘ

There are no carbohydrates in this entry.

## 5.6 Ligand geometry

3 ligands are modelled in this entry.

In the following table, the Counts columns list the number of bonds (or angles) for which Mogul statistics could be retrieved, the number of bonds (or angles) that are observed in the model and the number of bonds (or angles) that are defined in the Chemical Component Dictionary. The Link column lists molecule types, if any, to which the group is linked. The Z score for a bond length (or angle) is the number of standard deviations the observed value is removed from the expected value. A bond length (or angle) with  $|Z| > 2$  is considered an outlier worth inspection. RMSZ is the root-mean-square of all Z scores of the bond lengths (or angles).

Mol	Type	Chain	Res	Link	Bond lengths			Bond angles		
					Counts	RMSZ	# $ Z  > 2$	Counts	RMSZ	# $ Z  > 2$
2	LIX	A	401	-	47,48,48	1.95	4 (8%)	65,70,70	2.24	14 (21%)
3	CIT	A	501	-	3,12,12	0.87	0	3,17,17	0.57	0
2	LIX	B	402	-	47,48,48	1.98	5 (10%)	65,70,70	2.20	17 (26%)

In the following table, the Chirals column lists the number of chiral outliers, the number of chiral centers analysed, the number of these observed in the model and the number defined in the Chemical Component Dictionary. Similar counts are reported in the Torsion and Rings columns. '-' means no outliers of that kind were identified.

Mol	Type	Chain	Res	Link	Chirals	Torsions	Rings
2	LIX	A	401	-	-	0/25/44/44	0/5/5/5
3	CIT	A	501	-	-	0/6/16/16	0/0/0/0
2	LIX	B	402	-	-	0/25/44/44	0/5/5/5

All (9) bond length outliers are listed below:

Mol	Chain	Res	Type	Atoms	Z	Observed(Å)	Ideal(Å)
2	B	402	LIX	C30-S1	-11.08	1.60	1.76
2	A	401	LIX	C30-S1	-10.65	1.61	1.76
2	B	402	LIX	C29-C30	2.55	1.41	1.36
2	B	402	LIX	C4-C1	2.93	1.49	1.42
2	A	401	LIX	C25-C26	3.12	1.49	1.42
2	B	402	LIX	C4-C3	3.19	1.48	1.41
2	B	402	LIX	C25-C26	3.23	1.49	1.42
2	A	401	LIX	C4-C1	3.30	1.50	1.42
2	A	401	LIX	C4-C3	3.42	1.48	1.41

All (31) bond angle outliers are listed below:

Mol	Chain	Res	Type	Atoms	Z	Observed(°)	Ideal(°)
2	A	401	LIX	O4-S1-O5	-8.02	109.29	119.55
2	B	402	LIX	O4-S1-O5	-6.29	111.50	119.55
2	B	402	LIX	C4-C3-N2	-5.21	117.19	123.71
2	B	402	LIX	C11-C12-C4	-4.96	112.52	120.58
2	A	401	LIX	C4-C3-N2	-4.19	118.46	123.71
2	A	401	LIX	C11-C12-C4	-3.98	114.11	120.58
2	A	401	LIX	O5-S1-C30	-3.37	103.78	107.95
2	B	402	LIX	C20-N3-C1	-3.20	119.43	123.35
2	B	402	LIX	C31-C30-S1	-2.85	116.62	119.77
2	A	401	LIX	C4-C1-N1	-2.62	116.55	122.28
2	A	401	LIX	C11-C10-C9	-2.47	116.11	119.90
2	B	402	LIX	C8-C7-C12	-2.37	117.66	121.10
2	A	401	LIX	C8-C7-C12	-2.28	117.79	121.10
2	B	402	LIX	C10-N5-C15	-2.25	117.56	122.00
2	A	401	LIX	O4-S1-N6	-2.19	103.50	107.03
2	B	402	LIX	C6-C5-C3	-2.01	109.84	114.92
2	B	402	LIX	C9-C10-N5	2.02	121.40	118.53
2	B	402	LIX	C30-S1-N6	2.15	110.35	107.53
2	B	402	LIX	O2-C9-C8	2.33	120.21	116.57
2	B	402	LIX	C7-C12-C11	2.36	121.21	118.16
2	A	401	LIX	C16-N5-C15	2.73	121.42	117.47
2	A	401	LIX	C7-C12-C4	2.87	125.58	120.79
2	B	402	LIX	C2-N1-C1	2.95	121.17	114.51
2	B	402	LIX	C29-C30-S1	3.28	122.73	120.10
2	B	402	LIX	C7-C12-C4	3.28	126.27	120.79
2	A	401	LIX	C2-N1-C1	4.15	123.85	114.51
2	B	402	LIX	O5-S1-C30	4.42	113.42	107.95
2	A	401	LIX	O5-S1-N6	4.83	114.84	107.03
2	A	401	LIX	C2-N2-C3	6.51	121.34	116.31
2	A	401	LIX	C30-S1-N6	6.72	116.35	107.53
2	B	402	LIX	C2-N2-C3	8.80	123.11	116.31

There are no chirality outliers.

There are no torsion outliers.

There are no ring outliers.

2 monomers are involved in 2 short contacts:

Mol	Chain	Res	Type	Clashes	Symm-Clashes
2	A	401	LIX	1	0
2	B	402	LIX	1	0

## 5.7 Other polymers

There are no such residues in this entry.

## 5.8 Polymer linkage issues

There are no chain breaks in this entry.

## 6 Fit of model and data

### 6.1 Protein, DNA and RNA chains

In the following table, the column labelled ‘#RSRZ> 2’ contains the number (and percentage) of RSRZ outliers, followed by percent RSRZ outliers for the chain as percentile scores relative to all X-ray entries and entries of similar resolution. The OWAB column contains the minimum, median, 95<sup>th</sup> percentile and maximum values of the occupancy-weighted average B-factor per residue. The column labelled ‘Q< 0.9’ lists the number of (and percentage) of residues with an average occupancy less than 0.9.

Mol	Chain	Analysed	<RSRZ>	#RSRZ>2	OWAB(Å <sup>2</sup> )	Q<0.9
1	A	338/340 (99%)	0.28	21 (6%) 21 21	36, 45, 60, 69	2 (0%)
1	B	338/340 (99%)	0.53	42 (12%) 4 4	40, 49, 62, 67	6 (1%)
All	All	676/680 (99%)	0.41	63 (9%) 9 9	36, 47, 61, 69	8 (1%)

All (63) RSRZ outliers are listed below:

Mol	Chain	Res	Type	RSRZ
1	B	55	TYR	7.3
1	A	207	SER	6.5
1	A	208	SER	6.1
1	B	-2	LEU	5.5
1	A	209	THR	5.4
1	B	208	SER	5.1
1	B	49	LEU	5.0
1	B	134	ARG	4.9
1	A	-2	LEU	4.9
1	B	207	SER	4.7
1	A	164	SER	4.7
1	A	165	GLN	4.2
1	B	48	ARG	4.1
1	B	209	THR	3.9
1	B	47	SER	3.8
1	B	54	VAL	3.5
1	B	305	GLY	3.4
1	B	107	THR	3.4
1	B	220	VAL	3.4
1	A	40	TRP	3.2
1	A	214	ASP	3.2
1	B	52	ALA	3.2
1	B	80	THR	3.1
1	B	210	LEU	3.1

*Continued on next page...*



*Continued from previous page...*

Mol	Chain	Res	Type	RSRZ
1	B	50	TYR	3.1
1	B	69	HIS	3.1
1	A	303	PRO	3.0
1	A	41	VAL	3.0
1	A	0	ASN	3.0
1	B	24	PRO	2.9
1	B	108	GLU	2.9
1	A	-1	GLY	2.9
1	B	0	ASN	2.9
1	A	325	ARG	2.8
1	B	81	GLY	2.7
1	B	51	THR	2.7
1	B	213	GLU	2.7
1	B	310	LEU	2.7
1	B	303	PRO	2.6
1	A	163	ASN	2.6
1	A	39	VAL	2.6
1	B	77	ARG	2.6
1	B	186	HIS	2.5
1	A	302	PRO	2.5
1	B	162	GLU	2.5
1	B	87	LEU	2.5
1	B	214	ASP	2.5
1	A	134	ARG	2.4
1	B	206	GLY	2.4
1	A	301	PRO	2.4
1	B	244	LYS	2.3
1	A	295	ILE	2.3
1	B	41	VAL	2.2
1	B	63	ASP	2.2
1	B	73	GLU	2.2
1	B	302	PRO	2.2
1	B	320	THR	2.2
1	A	244	LYS	2.2
1	B	315	ILE	2.2
1	B	74	LEU	2.2
1	B	163	ASN	2.1
1	A	293	LEU	2.1
1	B	301	PRO	2.1

## 6.2 Non-standard residues in protein, DNA, RNA chains [i](#)

There are no non-standard protein/DNA/RNA residues in this entry.

## 6.3 Carbohydrates [i](#)

There are no carbohydrates in this entry.

## 6.4 Ligands [i](#)

In the following table, the Atoms column lists the number of modelled atoms in the group and the number defined in the chemical component dictionary. LLDF column lists the quality of electron density of the group with respect to its neighbouring residues in protein, DNA or RNA chains. The B-factors column lists the minimum, median, 95<sup>th</sup> percentile and maximum values of B factors of atoms in the group. The column labelled 'Q< 0.9' lists the number of atoms with occupancy less than 0.9.

Mol	Type	Chain	Res	Atoms	RSCC	RSR	LLDF	B-factors( $\text{\AA}^2$ )	Q<0.9
3	CIT	A	501	13/13	0.72	0.22	3.60	79,80,81,81	0
2	LIX	B	402	44/44	0.90	0.16	0.19	26,32,51,51	0
2	LIX	A	401	44/44	0.94	0.12	-0.93	26,30,42,42	0

## 6.5 Other polymers [i](#)

There are no such residues in this entry.