



# Full wwPDB X-ray Structure Validation Report ⓘ

Nov 20, 2017 – 10:55 PM EST

PDB ID : 1IMB  
Title : STRUCTURAL ANALYSIS OF INOSITOL MONOPHOSPHATASE COMPLEXES WITH SUBSTRATES  
Authors : Bone, R.  
Deposited on : unknown  
Resolution : 2.20 Å(reported)

This is a Full wwPDB X-ray Structure Validation Report for a publicly released PDB entry.

We welcome your comments at [validation@mail.wwpdb.org](mailto:validation@mail.wwpdb.org)

A user guide is available at

<http://wwpdb.org/validation/2016/XrayValidationReportHelp>

with specific help available everywhere you see the ⓘ symbol.

---

The following versions of software and data (see [references ⓘ](#)) were used in the production of this report:

MolProbity	:	4.02b-467
Mogul	:	1.7.2 (RC1), CSD as538be (2017)
Xtriage (Phenix)	:	NOT EXECUTED
EDS	:	NOT EXECUTED
Percentile statistics	:	20161228.v01 (using entries in the PDB archive December 28th 2016)
Ideal geometry (proteins)	:	Engh & Huber (2001)
Ideal geometry (DNA, RNA)	:	Parkinson et al. (1996)
Validation Pipeline (wwPDB-VP)	:	rb-20030345

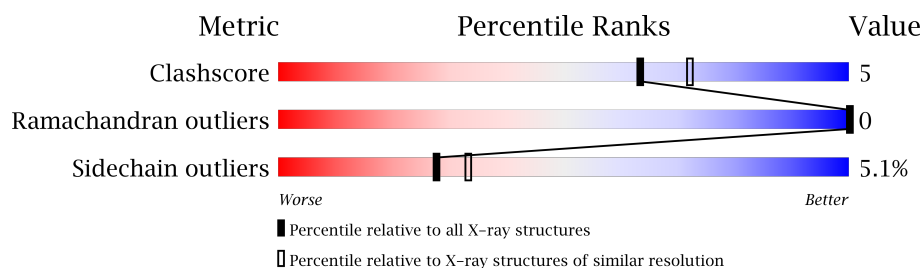
# 1 Overall quality at a glance

The following experimental techniques were used to determine the structure:

*X-RAY DIFFRACTION*

The reported resolution of this entry is 2.20 Å.

Percentile scores (ranging between 0-100) for global validation metrics of the entry are shown in the following graphic. The table shows the number of entries on which the scores are based.



Metric	Whole archive (#Entries)	Similar resolution (#Entries, resolution range(Å))
Clashscore	112137	4730 (2.20-2.20)
Ramachandran outliers	110173	4656 (2.20-2.20)
Sidechain outliers	110143	4657 (2.20-2.20)

The table below summarises the geometric issues observed across the polymeric chains and their fit to the electron density. The red, orange, yellow and green segments on the lower bar indicate the fraction of residues that contain outliers for  $\geq 3$ , 2, 1 and 0 types of geometric quality criteria. A grey segment represents the fraction of residues that are not modelled. The numeric value for each fraction is indicated below the corresponding segment, with a dot representing fractions  $\leq 5\%$ . The upper red bar (where present) indicates the fraction of residues that have poor fit to the electron density. The numeric value is given above the bar.

Note EDS was not executed.

Mol	Chain	Length	Quality of chain
1	A	277	
1	B	277	

## 2 Entry composition [i](#)

There are 4 unique types of molecules in this entry. The entry contains 4380 atoms, of which 0 are hydrogens and 0 are deuteriums.

In the tables below, the ZeroOcc column contains the number of atoms modelled with zero occupancy, the AltConf column contains the number of residues with at least one atom in alternate conformation and the Trace column contains the number of residues modelled with at most 2 atoms.

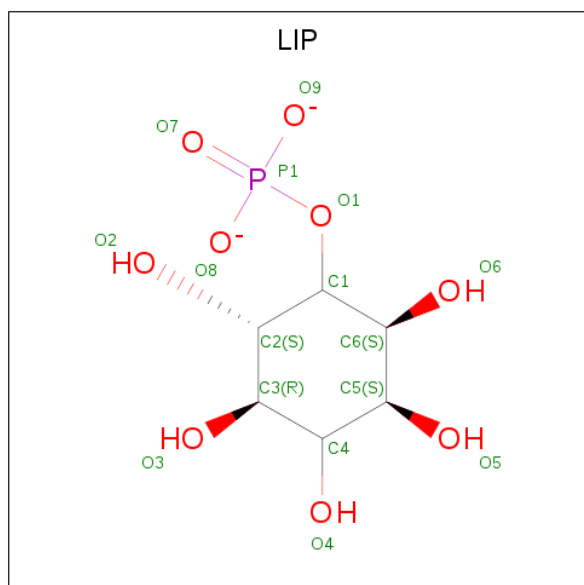
- Molecule 1 is a protein called INOSITOL MONOPHOSPHATASE.

Mol	Chain	Residues	Atoms					ZeroOcc	AltConf	Trace
1	A	273	Total	C	N	O	S	58	0	1
			2073	1307	352	396	18			
1	B	273	Total	C	N	O	S	50	0	1
			2073	1307	352	396	18			

- Molecule 2 is GADOLINIUM ATOM (three-letter code: GD) (formula: Gd).

Mol	Chain	Residues	Atoms		ZeroOcc	AltConf
2	B	1	Total	Gd	0	0
			1	1		
2	A	1	Total	Gd	0	0
			1	1		

- Molecule 3 is L-MYO-INOSITOL-1-PHOSPHATE (three-letter code: LIP) (formula: C<sub>6</sub>H<sub>11</sub>O<sub>9</sub>P).



Mol	Chain	Residues	Atoms				ZeroOcc	AltConf
3	A	1	Total	C	O	P	0	0
			16	6	9	1		
3	B	1	Total	C	O	P	0	0
			16	6	9	1		

- Molecule 4 is water.

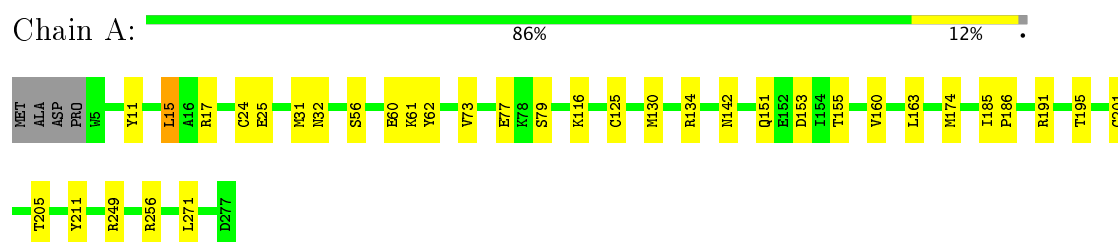
Mol	Chain	Residues	Atoms		ZeroOcc	AltConf
4	A	96	Total	O	0	0
			96	96		
4	B	104	Total	O	0	0
			104	104		

### 3 Residue-property plots [i](#)

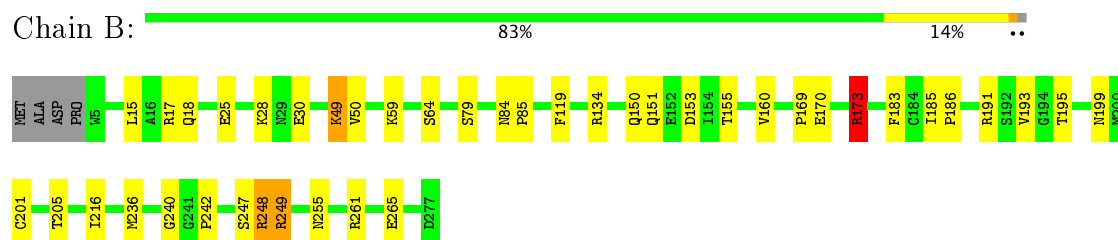
These plots are drawn for all protein, RNA and DNA chains in the entry. The first graphic for a chain summarises the proportions of the various outlier classes displayed in the second graphic. The second graphic shows the sequence view annotated by issues in geometry and electron density. Residues are color-coded according to the number of geometric quality criteria for which they contain at least one outlier: green = 0, yellow = 1, orange = 2 and red = 3 or more. A red dot above a residue indicates a poor fit to the electron density ( $RSRZ > 2$ ). Stretches of 2 or more consecutive residues without any outlier are shown as a green connector. Residues present in the sample, but not in the model, are shown in grey.

Note EDS was not executed.

#### • Molecule 1: INOSITOL MONOPHOSPHATASE



#### • Molecule 1: INOSITOL MONOPHOSPHATASE



## 4 Data and refinement statistics

Xtriage (Phenix) and EDS were not executed - this section is therefore incomplete.

Property	Value	Source
Space group	P 3 2 2 1	Depositor
Cell constants a, b, c, $\alpha$ , $\beta$ , $\gamma$	86.90 Å 86.90 Å 154.50 Å 90.00° 90.00° 120.00°	Depositor
Resolution (Å)	8.00 – 2.20	Depositor
% Data completeness (in resolution range)	(Not available) (8.00-2.20)	Depositor
$R_{merge}$	(Not available)	Depositor
$R_{sym}$	(Not available)	Depositor
Refinement program	X-PLOR	Depositor
R, $R_{free}$	0.167 , (Not available)	Depositor
Estimated twinning fraction	No twinning to report.	Xtriage
Total number of atoms	4380	wwPDB-VP
Average B, all atoms (Å <sup>2</sup> )	20.0	wwPDB-VP

## 5 Model quality

### 5.1 Standard geometry

Bond lengths and bond angles in the following residue types are not validated in this section: GD, LIP

The Z score for a bond length (or angle) is the number of standard deviations the observed value is removed from the expected value. A bond length (or angle) with  $|Z| > 5$  is considered an outlier worth inspection. RMSZ is the root-mean-square of all Z scores of the bond lengths (or angles).

Mol	Chain	Bond lengths		Bond angles	
		RMSZ	# Z  >5	RMSZ	# Z  >5
1	A	0.44	0/2106	0.55	0/2849
1	B	0.43	0/2106	0.57	0/2849
All	All	0.43	0/4212	0.56	0/5698

Chiral center outliers are detected by calculating the chiral volume of a chiral center and verifying if the center is modelled as a planar moiety or with the opposite hand. A planarity outlier is detected by checking planarity of atoms in a peptide group, atoms in a mainchain group or atoms of a sidechain that are expected to be planar.

Mol	Chain	#Chirality outliers	#Planarity outliers
1	A	0	2
1	B	0	4
All	All	0	6

There are no bond length outliers.

There are no bond angle outliers.

There are no chirality outliers.

All (6) planarity outliers are listed below:

Mol	Chain	Res	Type	Group
1	A	134	ARG	Sidechain
1	A	17	ARG	Sidechain
1	B	17	ARG	Sidechain
1	B	173	ARG	Sidechain
1	B	248	ARG	Sidechain
1	B	249	ARG	Sidechain

## 5.2 Too-close contacts ⓘ

In the following table, the Non-H and H(model) columns list the number of non-hydrogen atoms and hydrogen atoms in the chain respectively. The H(added) column lists the number of hydrogen atoms added and optimized by MolProbity. The Clashes column lists the number of clashes within the asymmetric unit, whereas Symm-Clashes lists symmetry related clashes.

Mol	Chain	Non-H	H(model)	H(added)	Clashes	Symm-Clashes
1	A	2073	0	2090	17	0
1	B	2073	0	2088	22	0
2	A	1	0	0	0	0
2	B	1	0	0	0	0
3	A	16	0	11	0	0
3	B	16	0	11	0	0
4	A	96	0	0	1	0
4	B	104	0	0	1	0
All	All	4380	0	4200	38	0

The all-atom clashscore is defined as the number of clashes found per 1000 atoms (including hydrogen atoms). The all-atom clashscore for this structure is 5.

All (38) close contacts within the same asymmetric unit are listed below, sorted by their clash magnitude.

Atom-1	Atom-2	Interatomic distance (Å)	Clash overlap (Å)
1:A:151:GLN:HE21	1:A:153:ASP:H	1.37	0.73
1:B:193:VAL:HG22	1:B:199:ASN:ND2	2.06	0.70
1:B:236:MET:CE	1:B:240:GLY:HA2	2.28	0.63
1:B:216:ILE:O	1:B:248:ARG:HD2	1.99	0.63
1:B:151:GLN:HE21	1:B:153:ASP:H	1.48	0.59
1:A:130:MET:H	1:A:142:ASN:ND2	2.01	0.58
1:A:130:MET:H	1:A:142:ASN:HD21	1.51	0.58
1:B:236:MET:HE2	1:B:240:GLY:HA2	1.86	0.57
1:B:84:ASN:OD1	1:B:85:PRO:HD2	2.06	0.56
1:A:24:CYS:SG	1:A:125:CYS:CB	2.97	0.52
1:B:119:PHE:HB3	1:B:134:ARG:HD2	1.92	0.51
1:A:185:ILE:N	1:A:186:PRO:HA	2.26	0.50
1:B:25:GLU:O	1:B:28:LYS:HG2	2.13	0.49
1:A:56:SER:O	1:A:60:GLU:HB2	2.13	0.48
1:A:11:TYR:CD2	1:A:61:LYS:HE2	2.48	0.48
1:A:249:ARG:NH1	4:A:375:HOH:O	2.46	0.48
1:A:201:CYS:O	1:A:205:THR:HG23	2.14	0.47
1:B:236:MET:HE3	1:B:240:GLY:HA2	1.97	0.46
1:B:193:VAL:HG22	1:B:199:ASN:HD21	1.77	0.46

*Continued on next page...*



Continued from previous page...

Atom-1	Atom-2	Interatomic distance (Å)	Clash overlap (Å)
1:B:160:VAL:HG12	1:B:191:ARG:HB2	1.98	0.46
1:A:61:LYS:HE3	1:A:62:TYR:CZ	2.51	0.45
1:B:185:ILE:N	1:B:186:PRO:HA	2.32	0.45
1:A:163:LEU:HB3	1:B:183:PHE:CZ	2.52	0.45
1:B:261:ARG:O	1:B:265:GLU:HG2	2.17	0.45
1:A:160:VAL:HG12	1:A:191:ARG:HB2	1.98	0.44
1:B:49:LYS:HG3	1:B:50:VAL:N	2.32	0.44
1:B:169:PRO:O	1:B:173:ARG:HB2	2.18	0.44
1:B:155:THR:HA	1:B:186:PRO:O	2.17	0.43
1:B:216:ILE:HG13	1:B:216:ILE:H	1.66	0.42
1:B:261:ARG:HD2	1:B:261:ARG:HA	1.70	0.42
1:A:11:TYR:CG	1:A:61:LYS:HE2	2.53	0.42
1:A:15:LEU:HA	1:A:15:LEU:HD12	1.87	0.42
1:A:160:VAL:HG23	1:A:211:TYR:HB2	2.01	0.42
1:B:150:GLN:HG2	4:B:315:HOH:O	2.20	0.42
1:A:73:VAL:HA	1:A:77:GLU:O	2.20	0.41
1:B:247:SER:O	1:B:248:ARG:HB2	2.21	0.41
1:A:155:THR:HA	1:A:186:PRO:O	2.20	0.41
1:B:201:CYS:O	1:B:205:THR:HG23	2.20	0.41

There are no symmetry-related clashes.

## 5.3 Torsion angles

### 5.3.1 Protein backbone

In the following table, the Percentiles column shows the percent Ramachandran outliers of the chain as a percentile score with respect to all X-ray entries followed by that with respect to entries of similar resolution.

The Analysed column shows the number of residues for which the backbone conformation was analysed, and the total number of residues.

Mol	Chain	Analysed	Favoured	Allowed	Outliers	Percentiles	
1	A	271/277 (98%)	267 (98%)	4 (2%)	0	100	100
1	B	271/277 (98%)	266 (98%)	5 (2%)	0	100	100
All	All	542/554 (98%)	533 (98%)	9 (2%)	0	100	100

There are no Ramachandran outliers to report.

### 5.3.2 Protein sidechains ⓘ

In the following table, the Percentiles column shows the percent sidechain outliers of the chain as a percentile score with respect to all X-ray entries followed by that with respect to entries of similar resolution.

The Analysed column shows the number of residues for which the sidechain conformation was analysed, and the total number of residues.

Mol	Chain	Analysed	Rotameric	Outliers	Percentiles	
1	A	227/231 (98%)	217 (96%)	10 (4%)	33	40
1	B	227/231 (98%)	214 (94%)	13 (6%)	24	28
All	All	454/462 (98%)	431 (95%)	23 (5%)	28	33

All (23) residues with a non-rotameric sidechain are listed below:

Mol	Chain	Res	Type
1	A	15	LEU
1	A	25	GLU
1	A	31	MET
1	A	32	ASN
1	A	79	SER
1	A	116	LYS
1	A	174	MET
1	A	195	THR
1	A	256	ARG
1	A	271	LEU
1	B	15	LEU
1	B	18	GLN
1	B	30	GLU
1	B	49	LYS
1	B	59	LYS
1	B	64	SER
1	B	79	SER
1	B	170	GLU
1	B	173	ARG
1	B	195	THR
1	B	242	PRO
1	B	249	ARG
1	B	255	ASN

Some sidechains can be flipped to improve hydrogen bonding and reduce clashes. All (15) such sidechains are listed below:

Mol	Chain	Res	Type
1	A	29	ASN
1	A	32	ASN
1	A	48	GLN
1	A	114	ASN
1	A	142	ASN
1	A	144	GLN
1	A	151	GLN
1	A	267	GLN
1	B	6	GLN
1	B	29	ASN
1	B	48	GLN
1	B	114	ASN
1	B	151	GLN
1	B	199	ASN
1	B	255	ASN

### 5.3.3 RNA [i](#)

There are no RNA molecules in this entry.

## 5.4 Non-standard residues in protein, DNA, RNA chains [i](#)

There are no non-standard protein/DNA/RNA residues in this entry.

## 5.5 Carbohydrates [i](#)

There are no carbohydrates in this entry.

## 5.6 Ligand geometry [i](#)

Of 4 ligands modelled in this entry, 2 are monoatomic - leaving 2 for Mogul analysis.

In the following table, the Counts columns list the number of bonds (or angles) for which Mogul statistics could be retrieved, the number of bonds (or angles) that are observed in the model and the number of bonds (or angles) that are defined in the Chemical Component Dictionary. The Link column lists molecule types, if any, to which the group is linked. The Z score for a bond length (or angle) is the number of standard deviations the observed value is removed from the expected value. A bond length (or angle) with  $|Z| > 2$  is considered an outlier worth inspection. RMSZ is the root-mean-square of all Z scores of the bond lengths (or angles).

Mol	Type	Chain	Res	Link	Bond lengths			Bond angles		
					Counts	RMSZ	# Z  > 2	Counts	RMSZ	# Z  > 2
3	LIP	A	279	2	16,16,16	0.90	0	24,25,25	0.69	1 (4%)
3	LIP	B	279	2	16,16,16	0.88	1 (6%)	24,25,25	0.79	0

In the following table, the Chirals column lists the number of chiral outliers, the number of chiral centers analysed, the number of these observed in the model and the number defined in the Chemical Component Dictionary. Similar counts are reported in the Torsion and Rings columns. '-' means no outliers of that kind were identified.

Mol	Type	Chain	Res	Link	Chirals	Torsions	Rings
3	LIP	A	279	2	-	0/5/29/29	0/1/1/1
3	LIP	B	279	2	-	0/5/29/29	0/1/1/1

All (1) bond length outliers are listed below:

Mol	Chain	Res	Type	Atoms	Z	Observed(Å)	Ideal(Å)
3	B	279	LIP	P1-O1	-2.60	1.55	1.59

All (1) bond angle outliers are listed below:

Mol	Chain	Res	Type	Atoms	Z	Observed(°)	Ideal(°)
3	A	279	LIP	C6-C1-C2	-2.03	107.91	110.83

There are no chirality outliers.

There are no torsion outliers.

There are no ring outliers.

No monomer is involved in short contacts.

## 5.7 Other polymers [i](#)

There are no such residues in this entry.

## 5.8 Polymer linkage issues [i](#)

There are no chain breaks in this entry.

## 6 Fit of model and data ⓘ

### 6.1 Protein, DNA and RNA chains ⓘ

EDS was not executed - this section is therefore empty.

### 6.2 Non-standard residues in protein, DNA, RNA chains ⓘ

EDS was not executed - this section is therefore empty.

### 6.3 Carbohydrates ⓘ

EDS was not executed - this section is therefore empty.

### 6.4 Ligands ⓘ

EDS was not executed - this section is therefore empty.

### 6.5 Other polymers ⓘ

EDS was not executed - this section is therefore empty.