



# Full wwPDB X-ray Structure Validation Report ⓘ

Feb 13, 2017 – 08:22 pm GMT

PDB ID : 4IM0  
Title : Structure of Tank-Binding Kinase 1  
Authors : Tu, D.; Eck, M.J.  
Deposited on : 2013-01-01  
Resolution : 2.40 Å(reported)

This is a Full wwPDB X-ray Structure Validation Report for a publicly released PDB entry.

We welcome your comments at [validation@mail.wwpdb.org](mailto:validation@mail.wwpdb.org)

A user guide is available at

<http://wwpdb.org/validation/2016/XrayValidationReportHelp>

with specific help available everywhere you see the ⓘ symbol.

---

The following versions of software and data (see [references ⓘ](#)) were used in the production of this report:

MolProbity : 4.02b-467  
Mogul : 1.7.2 (RC1), CSD as538be (2017)  
Xtriage (Phenix) : 1.9-1692  
EDS : trunk28620  
Percentile statistics : 20161228.v01 (using entries in the PDB archive December 28th 2016)  
Refmac : 5.8.0135  
CCP4 : 6.5.0  
Ideal geometry (proteins) : Engh & Huber (2001)  
Ideal geometry (DNA, RNA) : Parkinson et al. (1996)  
Validation Pipeline (wwPDB-VP) : recalc28949

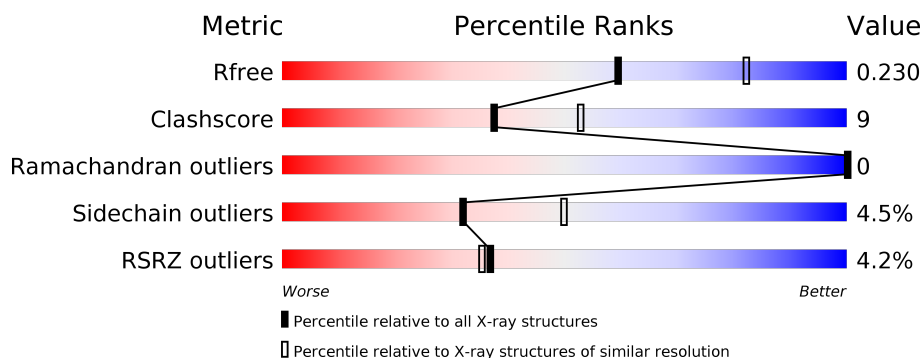
# 1 Overall quality at a glance

The following experimental techniques were used to determine the structure:

*X-RAY DIFFRACTION*

The reported resolution of this entry is 2.40 Å.

Percentile scores (ranging between 0-100) for global validation metrics of the entry are shown in the following graphic. The table shows the number of entries on which the scores are based.



Metric	Whole archive (#Entries)	Similar resolution (#Entries, resolution range(Å))
$R_{free}$	100719	3166 (2.40-2.40)
Clashscore	112137	3674 (2.40-2.40)
Ramachandran outliers	110173	3616 (2.40-2.40)
Sidechain outliers	110143	3617 (2.40-2.40)
RSRZ outliers	101464	3195 (2.40-2.40)

The table below summarises the geometric issues observed across the polymeric chains and their fit to the electron density. The red, orange, yellow and green segments on the lower bar indicate the fraction of residues that contain outliers for  $\geq 3$ , 2, 1 and 0 types of geometric quality criteria. A grey segment represents the fraction of residues that are not modelled. The numeric value for each fraction is indicated below the corresponding segment, with a dot representing fractions  $\leq 5\%$ . The upper red bar (where present) indicates the fraction of residues that have poor fit to the electron density. The numeric value is given above the bar.

Mol	Chain	Length	Quality of chain
1	A	663	

## 2 Entry composition [i](#)

There are 3 unique types of molecules in this entry. The entry contains 5275 atoms, of which 0 are hydrogens and 0 are deuteriums.

In the tables below, the ZeroOcc column contains the number of atoms modelled with zero occupancy, the AltConf column contains the number of residues with at least one atom in alternate conformation and the Trace column contains the number of residues modelled with at most 2 atoms.

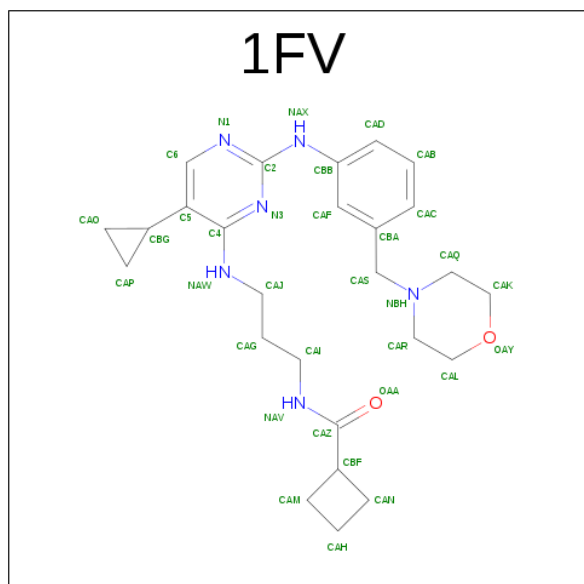
- Molecule 1 is a protein called Serine/threonine-protein kinase TBK1.

Mol	Chain	Residues	Atoms					ZeroOcc	AltConf	Trace
			Total	C	N	O	S			
1	A	619	4949	3150	846	929	24	0	3	0

There are 7 discrepancies between the modelled and reference sequences:

Chain	Residue	Modelled	Actual	Comment	Reference
A	-5	GLY	-	EXPRESSION TAG	UNP Q9UHD2
A	-4	SER	-	EXPRESSION TAG	UNP Q9UHD2
A	-3	GLY	-	EXPRESSION TAG	UNP Q9UHD2
A	-2	SER	-	EXPRESSION TAG	UNP Q9UHD2
A	-1	GLY	-	EXPRESSION TAG	UNP Q9UHD2
A	0	SER	-	EXPRESSION TAG	UNP Q9UHD2
A	135	ASN	ASP	ENGINEERED MUTATION	UNP Q9UHD2

- Molecule 2 is N-{3-[(5-CYCLOPROPYL-2-{[3-(MORPHOLIN-4-YLMETHYL)PHENYL]AMINO}PYRIMIDIN-4-YL)AMINO]PROPYL}CYCLOBUTANECARBOXAMIDE (three-letter code: 1FV) (formula: C<sub>26</sub>H<sub>36</sub>N<sub>6</sub>O<sub>2</sub>).



Mol	Chain	Residues	Atoms				ZeroOcc	AltConf
2	A	1	Total	C	N	O	0	0
			34	26	6	2		

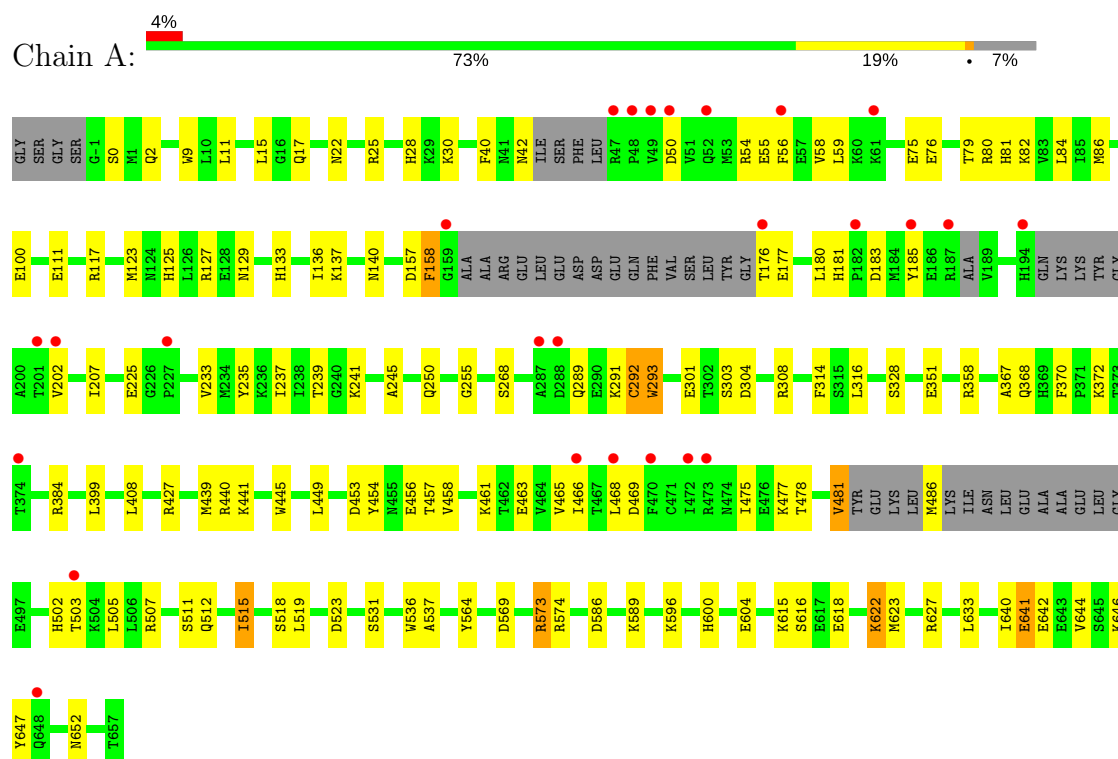
- Molecule 3 is water.

Mol	Chain	Residues	Atoms		ZeroOcc	AltConf
3	A	292	Total	O	0	0
			292	292		

### 3 Residue-property plots [i](#)

These plots are drawn for all protein, RNA and DNA chains in the entry. The first graphic for a chain summarises the proportions of the various outlier classes displayed in the second graphic. The second graphic shows the sequence view annotated by issues in geometry and electron density. Residues are color-coded according to the number of geometric quality criteria for which they contain at least one outlier: green = 0, yellow = 1, orange = 2 and red = 3 or more. A red dot above a residue indicates a poor fit to the electron density ( $RSRZ > 2$ ). Stretches of 2 or more consecutive residues without any outlier are shown as a green connector. Residues present in the sample, but not in the model, are shown in grey.

- Molecule 1: Serine/threonine-protein kinase TBK1



## 4 Data and refinement statistics

Property	Value	Source
Space group	P 32 2 1	Depositor
Cell constants a, b, c, $\alpha$ , $\beta$ , $\gamma$	133.92Å 133.92Å 85.67Å 90.00° 90.00° 120.00°	Depositor
Resolution (Å)	39.02 – 2.40 43.84 – 2.40	Depositor EDS
% Data completeness (in resolution range)	99.3 (39.02-2.40) 99.1 (43.84-2.40)	Depositor EDS
$R_{merge}$	(Not available)	Depositor
$R_{sym}$	(Not available)	Depositor
$\langle I/\sigma(I) \rangle$ <sup>1</sup>	2.55 (at 2.39Å)	Xtriage
Refinement program	PHENIX (phenix.refine: 1.7.3_928)	Depositor
R, $R_{free}$	0.199 , 0.236 0.193 , 0.230	Depositor DCC
$R_{free}$ test set	1747 reflections (5.04%)	DCC
Wilson B-factor (Å <sup>2</sup> )	65.8	Xtriage
Anisotropy	0.243	Xtriage
Bulk solvent $k_{sol}$ (e/Å <sup>3</sup> ), $B_{sol}$ (Å <sup>2</sup> )	0.29 , 68.1	EDS
L-test for twinning <sup>2</sup>	$\langle  L  \rangle = 0.51$ , $\langle L^2 \rangle = 0.34$	Xtriage
Estimated twinning fraction	0.018 for -h,-k,l	Xtriage
$F_o, F_c$ correlation	0.96	EDS
Total number of atoms	5275	wwPDB-VP
Average B, all atoms (Å <sup>2</sup> )	93.0	wwPDB-VP

Xtriage's analysis on translational NCS is as follows: *The largest off-origin peak in the Patterson function is 2.98% of the height of the origin peak. No significant pseudotranslation is detected.*

<sup>1</sup>Intensities estimated from amplitudes.

<sup>2</sup>Theoretical values of  $\langle |L| \rangle$ ,  $\langle L^2 \rangle$  for acentric reflections are 0.5, 0.333 respectively for untwinned datasets, and 0.375, 0.2 for perfectly twinned datasets.

## 5 Model quality [i](#)

### 5.1 Standard geometry [i](#)

Bond lengths and bond angles in the following residue types are not validated in this section: 1FV

The Z score for a bond length (or angle) is the number of standard deviations the observed value is removed from the expected value. A bond length (or angle) with  $|Z| > 5$  is considered an outlier worth inspection. RMSZ is the root-mean-square of all Z scores of the bond lengths (or angles).

Mol	Chain	Bond lengths		Bond angles	
		RMSZ	$\# Z  > 5$	RMSZ	$\# Z  > 5$
1	A	0.30	1/5056 (0.0%)	0.46	1/6833 (0.0%)

All (1) bond length outliers are listed below:

Mol	Chain	Res	Type	Atoms	Z	Observed(Å)	Ideal(Å)
1	A	481	VAL	CB-CG2	-5.19	1.42	1.52

All (1) bond angle outliers are listed below:

Mol	Chain	Res	Type	Atoms	Z	Observed(°)	Ideal(°)
1	A	481	VAL	CG1-CB-CG2	-5.39	102.28	110.90

There are no chirality outliers.

There are no planarity outliers.

### 5.2 Too-close contacts [i](#)

In the following table, the Non-H and H(model) columns list the number of non-hydrogen atoms and hydrogen atoms in the chain respectively. The H(added) column lists the number of hydrogen atoms added and optimized by MolProbity. The Clashes column lists the number of clashes within the asymmetric unit, whereas Symm-Clashes lists symmetry related clashes.

Mol	Chain	Non-H	H(model)	H(added)	Clashes	Symm-Clashes
1	A	4949	0	4870	84	0
2	A	34	0	35	4	0
3	A	292	0	0	16	0
All	All	5275	0	4905	87	0

The all-atom clashscore is defined as the number of clashes found per 1000 atoms (including

hydrogen atoms). The all-atom clashscore for this structure is 9.

All (87) close contacts within the same asymmetric unit are listed below, sorted by their clash magnitude.

Atom-1	Atom-2	Interatomic distance (Å)	Clash overlap (Å)
1:A:133:HIS:CD2	1:A:136:ILE:HG13	2.19	0.76
1:A:351:GLU:OE1	1:A:358:ARG:NH1	2.20	0.74
1:A:111:GLU:OE1	3:A:988:HOH:O	2.07	0.72
1:A:133:HIS:HD2	1:A:136:ILE:HG13	1.54	0.71
2:A:701:1FV:N3	2:A:701:1FV:H24	2.07	0.69
1:A:42:ASN:OD1	3:A:896:HOH:O	2.12	0.68
1:A:399:LEU:O	3:A:1034:HOH:O	2.15	0.65
1:A:316:LEU:HD12	1:A:439:MET:HE2	1.79	0.63
1:A:465:VAL:HG22	1:A:512:GLN:HE22	1.63	0.63
1:A:133:HIS:ND1	1:A:158:PHE:HB3	2.15	0.62
1:A:117:ARG:NH1	3:A:963:HOH:O	2.17	0.61
1:A:176:THR:N	3:A:1053:HOH:O	2.34	0.59
1:A:503:THR:O	1:A:507:ARG:HG2	2.02	0.59
1:A:453:ASP:O	1:A:457:THR:HG23	2.01	0.59
1:A:465:VAL:HG22	1:A:512:GLN:NE2	2.17	0.59
1:A:461:LYS:O	1:A:465:VAL:HG23	2.04	0.58
1:A:458:VAL:HG22	1:A:519:LEU:HD13	1.86	0.58
1:A:40:PHE:O	3:A:900:HOH:O	2.17	0.57
1:A:518:SER:HB3	1:A:633:LEU:HD11	1.88	0.56
1:A:125:HIS:O	1:A:129:ASN:ND2	2.35	0.56
1:A:314:PHE:HE2	1:A:439:MET:HE3	1.70	0.55
1:A:75:GLU:OE2	1:A:82:LYS:NZ	2.40	0.55
1:A:303:SER:OG	3:A:1047:HOH:O	2.18	0.55
1:A:136:ILE:HD12	1:A:136:ILE:H	1.72	0.54
1:A:304:ASP:OD2	1:A:308:ARG:NH1	2.41	0.54
1:A:304:ASP:OD2	3:A:1072:HOH:O	2.19	0.54
1:A:202:VAL:O	3:A:1075:HOH:O	2.19	0.53
1:A:181:HIS:O	1:A:185:TYR:N	2.38	0.53
1:A:475:ILE:O	1:A:478:THR:OG1	2.27	0.53
1:A:292:CYS:SG	3:A:1084:HOH:O	2.59	0.53
1:A:586:ASP:HA	1:A:589:LYS:HB2	1.90	0.53
1:A:314:PHE:HE2	1:A:439:MET:CE	2.24	0.51
1:A:181:HIS:HD2	1:A:183:ASP:H	1.59	0.50
1:A:456:GLU:O	3:A:1066:HOH:O	2.20	0.49
1:A:314:PHE:CE2	1:A:439:MET:HE3	2.47	0.49
1:A:289:GLN:HA	1:A:292:CYS:HB2	1.94	0.48
1:A:477:LYS:O	1:A:481:VAL:HG23	2.13	0.48
1:A:176:THR:O	1:A:180:LEU:HG	2.13	0.48

*Continued on next page...*



*Continued from previous page...*

Atom-1	Atom-2	Interatomic distance (Å)	Clash overlap (Å)
1:A:56:PHE:CE1	1:A:84:LEU:HD11	2.48	0.48
1:A:157:ASP:HB2	2:A:701:1FV:H7	1.95	0.48
1:A:573:ARG:HH11	1:A:573:ARG:HA	1.79	0.47
1:A:76:GLU:OE1	1:A:79:THR:N	2.28	0.47
1:A:408:LEU:HD13	1:A:569:ASP:O	2.14	0.47
1:A:441:LYS:HD3	1:A:445:TRP:CH2	2.50	0.47
1:A:181:HIS:CD2	1:A:183:ASP:H	2.33	0.47
1:A:268:SER:HB3	1:A:427:ARG:CZ	2.45	0.47
1:A:441:LYS:NZ	3:A:851:HOH:O	2.42	0.47
1:A:641:GLU:HG3	1:A:642:GLU:N	2.30	0.46
2:A:701:1FV:H1	2:A:701:1FV:H8	1.47	0.46
1:A:531:SER:O	1:A:622:LYS:NZ	2.49	0.46
1:A:123:MET:SD	1:A:207:ILE:HD11	2.56	0.46
1:A:22:ASN:ND2	3:A:1013:HOH:O	2.49	0.46
1:A:2:GLN:HB2	1:A:9:TRP:CZ2	2.50	0.45
1:A:367:ALA:HA	1:A:370:PHE:CD1	2.51	0.45
1:A:454:TYR:CZ	1:A:523:ASP:HB2	2.50	0.45
1:A:100[A]:GLU:OE1	1:A:564:TYR:OH	2.34	0.45
1:A:372:LYS:HE2	1:A:372:LYS:HB3	1.84	0.45
1:A:293:TRP:CH2	1:A:301:GLU:HG3	2.52	0.44
1:A:58:VAL:HG22	1:A:59:LEU:HD12	1.98	0.44
2:A:701:1FV:N3	2:A:701:1FV:CAD	2.74	0.44
1:A:233:VAL:O	1:A:237:ILE:HG13	2.18	0.44
1:A:328:SER:OG	1:A:368:GLN:HB3	2.17	0.44
1:A:384:ARG:NH1	3:A:979:HOH:O	2.35	0.44
1:A:241:LYS:HE2	1:A:245:ALA:O	2.18	0.44
1:A:2:GLN:HG3	1:A:11:LEU:HD21	2.00	0.43
1:A:468:LEU:HD13	1:A:644:VAL:HG22	1.99	0.43
1:A:140:ASN:HB3	3:A:875:HOH:O	2.19	0.43
1:A:235:TYR:CZ	1:A:239:THR:HG21	2.53	0.43
1:A:50:ASP:O	1:A:54:ARG:HG3	2.19	0.43
1:A:536:TRP:HH2	1:A:616:SER:HG	1.66	0.43
1:A:17:GLN:HG3	1:A:22:ASN:OD1	2.19	0.43
1:A:463:GLU:O	1:A:466:ILE:HG22	2.19	0.43
1:A:55:GLU:HA	1:A:58:VAL:HG13	2.00	0.43
1:A:623:MET:O	1:A:627:ARG:HG3	2.19	0.42
1:A:15:LEU:HD11	1:A:25:ARG:HB2	2.01	0.42
1:A:615:LYS:O	1:A:618:GLU:HG2	2.20	0.42
1:A:440:ARG:HG2	1:A:537:ALA:HB1	2.02	0.41
1:A:600:HIS:O	1:A:604:GLU:HB3	2.19	0.41
1:A:22:ASN:ND2	3:A:1014:HOH:O	2.54	0.41

*Continued on next page...*

*Continued from previous page...*

Atom-1	Atom-2	Interatomic distance (Å)	Clash overlap (Å)
1:A:250:GLN:HE21	1:A:255:GLY:N	2.19	0.41
1:A:28:HIS:CE1	1:A:30:LYS:HB2	2.54	0.41
1:A:468:LEU:HD11	1:A:505:LEU:HD21	2.03	0.41
1:A:515:ILE:HG13	1:A:633:LEU:HD22	2.01	0.41
1:A:640:ILE:O	1:A:644:VAL:HG23	2.20	0.41
1:A:646:LYS:HG2	1:A:647:TYR:CD1	2.56	0.41
1:A:468:LEU:HD13	1:A:644:VAL:CG2	2.50	0.41
1:A:2:GLN:HB2	1:A:9:TRP:CE2	2.56	0.40

There are no symmetry-related clashes.

## 5.3 Torsion angles [i](#)

### 5.3.1 Protein backbone [i](#)

In the following table, the Percentiles column shows the percent Ramachandran outliers of the chain as a percentile score with respect to all X-ray entries followed by that with respect to entries of similar resolution.

The Analysed column shows the number of residues for which the backbone conformation was analysed, and the total number of residues.

Mol	Chain	Analysed	Favoured	Allowed	Outliers	Percentiles	
1	A	609/663 (92%)	599 (98%)	10 (2%)	0	100	100

There are no Ramachandran outliers to report.

### 5.3.2 Protein sidechains [i](#)

In the following table, the Percentiles column shows the percent sidechain outliers of the chain as a percentile score with respect to all X-ray entries followed by that with respect to entries of similar resolution.

The Analysed column shows the number of residues for which the sidechain conformation was analysed, and the total number of residues.

Mol	Chain	Analysed	Rotameric	Outliers	Percentiles	
1	A	538/590 (91%)	514 (96%)	24 (4%)	32	50

All (24) residues with a non-rotameric sidechain are listed below:

Mol	Chain	Res	Type
1	A	0	SER
1	A	80	ARG
1	A	81	HIS
1	A	86	MET
1	A	127	ARG
1	A	137	LYS
1	A	158	PHE
1	A	177	GLU
1	A	225	GLU
1	A	291	LYS
1	A	292	CYS
1	A	293	TRP
1	A	449	LEU
1	A	469	ASP
1	A	486	MET
1	A	502	HIS
1	A	511	SER
1	A	515	ILE
1	A	573	ARG
1	A	574	ARG
1	A	596	LYS
1	A	622	LYS
1	A	641	GLU
1	A	652	ASN

Some sidechains can be flipped to improve hydrogen bonding and reduce clashes. All (3) such sidechains are listed below:

Mol	Chain	Res	Type
1	A	181	HIS
1	A	330	ASN
1	A	512	GLN

### 5.3.3 RNA ⓘ

There are no RNA molecules in this entry.

## 5.4 Non-standard residues in protein, DNA, RNA chains ⓘ

There are no non-standard protein/DNA/RNA residues in this entry.

## 5.5 Carbohydrates [i](#)

There are no carbohydrates in this entry.

## 5.6 Ligand geometry [i](#)

1 ligand is modelled in this entry.

In the following table, the Counts columns list the number of bonds (or angles) for which Mogul statistics could be retrieved, the number of bonds (or angles) that are observed in the model and the number of bonds (or angles) that are defined in the chemical component dictionary. The Link column lists molecule types, if any, to which the group is linked. The Z score for a bond length (or angle) is the number of standard deviations the observed value is removed from the expected value. A bond length (or angle) with  $|Z| > 2$  is considered an outlier worth inspection. RMSZ is the root-mean-square of all Z scores of the bond lengths (or angles).

Mol	Type	Chain	Res	Link	Bond lengths			Bond angles		
					Counts	RMSZ	$\# Z  > 2$	Counts	RMSZ	$\# Z  > 2$
2	1FV	A	701	-	37,38,38	0.88	2 (5%)	46,51,51	3.25	13 (28%)

In the following table, the Chirals column lists the number of chiral outliers, the number of chiral centers analysed, the number of these observed in the model and the number defined in the chemical component dictionary. Similar counts are reported in the Torsion and Rings columns. '-' means no outliers of that kind were identified.

Mol	Type	Chain	Res	Link	Chirals	Torsions	Rings
2	1FV	A	701	-	-	0/24/40/40	0/4/5/5

All (2) bond length outliers are listed below:

Mol	Chain	Res	Type	Atoms	Z	Observed(Å)	Ideal(Å)
2	A	701	1FV	CBB-NAX	-2.38	1.35	1.40
2	A	701	1FV	C4-NAW	-2.30	1.30	1.34

All (13) bond angle outliers are listed below:

Mol	Chain	Res	Type	Atoms	Z	Observed(°)	Ideal(°)
2	A	701	1FV	C4-C5-CBG	-8.58	115.06	122.95
2	A	701	1FV	N1-C2-N3	-7.72	119.25	126.68
2	A	701	1FV	CAP-CBG-C5	-5.51	115.82	121.62
2	A	701	1FV	CAG-CAJ-NAW	-5.37	97.15	111.46
2	A	701	1FV	C5-C6-N1	-5.01	117.89	124.39
2	A	701	1FV	CAO-CBG-C5	-4.84	116.53	121.62
2	A	701	1FV	OAA-CAZ-CBF	-3.99	117.00	122.11

*Continued on next page...*

*Continued from previous page...*

Mol	Chain	Res	Type	Atoms	Z	Observed(°)	Ideal(°)
2	A	701	1FV	CAB-CAD-CBB	2.13	122.28	119.72
2	A	701	1FV	OAA-CAZ-NAV	2.85	128.56	123.07
2	A	701	1FV	CAI-NAV-CAZ	4.02	130.07	122.59
2	A	701	1FV	C6-N1-C2	4.06	122.60	115.88
2	A	701	1FV	NAW-C4-N3	6.89	126.96	118.65
2	A	701	1FV	CAJ-NAW-C4	10.32	135.97	123.35

There are no chirality outliers.

There are no torsion outliers.

There are no ring outliers.

1 monomer is involved in 4 short contacts:

Mol	Chain	Res	Type	Clashes	Symm-Clashes
2	A	701	1FV	4	0

## 5.7 Other polymers [i](#)

There are no such residues in this entry.

## 5.8 Polymer linkage issues [i](#)

There are no chain breaks in this entry.

## 6 Fit of model and data

### 6.1 Protein, DNA and RNA chains

In the following table, the column labelled ‘#RSRZ> 2’ contains the number (and percentage) of RSRZ outliers, followed by percent RSRZ outliers for the chain as percentile scores relative to all X-ray entries and entries of similar resolution. The OWAB column contains the minimum, median, 95<sup>th</sup> percentile and maximum values of the occupancy-weighted average B-factor per residue. The column labelled ‘Q< 0.9’ lists the number of (and percentage) of residues with an average occupancy less than 0.9.

Mol	Chain	Analysed	<RSRZ>	#RSRZ>2	OWAB(Å <sup>2</sup> )	Q<0.9
1	A	619/663 (93%)	0.10	26 (4%) 37 35	47, 83, 171, 220	0

All (26) RSRZ outliers are listed below:

Mol	Chain	Res	Type	RSRZ
1	A	472	ILE	5.5
1	A	47	ARG	4.3
1	A	49	VAL	4.1
1	A	176	THR	4.1
1	A	201	THR	3.5
1	A	202	VAL	3.5
1	A	466	ILE	3.4
1	A	473	ARG	3.3
1	A	50	ASP	3.1
1	A	187	ARG	3.1
1	A	185	TYR	3.0
1	A	468	LEU	2.8
1	A	194	HIS	2.8
1	A	374	THR	2.8
1	A	288	ASP	2.8
1	A	159	GLY	2.6
1	A	182	PRO	2.5
1	A	470	PHE	2.5
1	A	648	GLN	2.4
1	A	227	PRO	2.4
1	A	52	GLN	2.4
1	A	48	PRO	2.4
1	A	503	THR	2.4
1	A	56	PHE	2.2
1	A	287	ALA	2.0
1	A	61	LYS	2.0

## 6.2 Non-standard residues in protein, DNA, RNA chains [i](#)

There are no non-standard protein/DNA/RNA residues in this entry.

## 6.3 Carbohydrates [i](#)

There are no carbohydrates in this entry.

## 6.4 Ligands [i](#)

In the following table, the Atoms column lists the number of modelled atoms in the group and the number defined in the chemical component dictionary. LLDF column lists the quality of electron density of the group with respect to its neighbouring residues in protein, DNA or RNA chains. The B-factors column lists the minimum, median, 95<sup>th</sup> percentile and maximum values of B factors of atoms in the group. The column labelled 'Q< 0.9' lists the number of atoms with occupancy less than 0.9.

Mol	Type	Chain	Res	Atoms	RSCC	RSR	LLDF	B-factors( $\text{\AA}^2$ )	Q<0.9
2	1FV	A	701	34/34	0.95	0.17	1.38	47,73,112,117	0

## 6.5 Other polymers [i](#)

There are no such residues in this entry.