



# wwPDB X-ray Structure Validation Summary Report ⓘ

Feb 15, 2017 – 02:30 am GMT

PDB ID : 3ITH  
Title : Crystal structure of the HIV-1 reverse transcriptase bound to a 6-vinylpyrimidine inhibitor  
Authors : Freisz, S.; Bec, G.; Wolff, P.; Dumas, P.; Radi, M.; Botta, M.  
Deposited on : 2009-08-28  
Resolution : 2.80 Å(reported)

This is a wwPDB X-ray Structure Validation Summary Report for a publicly released PDB entry.

We welcome your comments at [validation@mail.wwpdb.org](mailto:validation@mail.wwpdb.org)

A user guide is available at

<http://wwpdb.org/validation/2016/XrayValidationReportHelp>

with specific help available everywhere you see the ⓘ symbol.

---

The following versions of software and data (see [references ⓘ](#)) were used in the production of this report:

MolProbity : 4.02b-467  
Mogul : 1.7.2 (RC1), CSD as538be (2017)  
Xtriage (Phenix) : 1.9-1692  
EDS : trunk28683  
Percentile statistics : 20161228.v01 (using entries in the PDB archive December 28th 2016)  
Refmac : 5.8.0135  
CCP4 : 6.5.0  
Ideal geometry (proteins) : Engh & Huber (2001)  
Ideal geometry (DNA, RNA) : Parkinson et al. (1996)  
Validation Pipeline (wwPDB-VP) : recalc28949

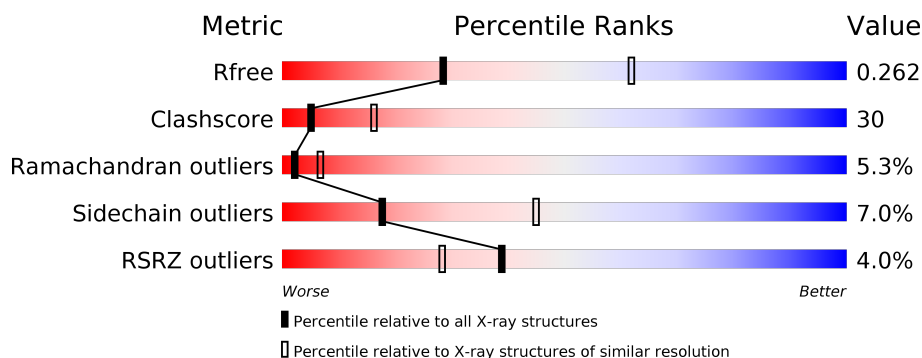
# 1 Overall quality at a glance ⓘ

The following experimental techniques were used to determine the structure:

*X-RAY DIFFRACTION*

The reported resolution of this entry is 2.80 Å.

Percentile scores (ranging between 0-100) for global validation metrics of the entry are shown in the following graphic. The table shows the number of entries on which the scores are based.



Metric	Whole archive (#Entries)	Similar resolution (#Entries, resolution range(Å))
$R_{free}$	100719	2583 (2.80-2.80)
Clashscore	112137	3033 (2.80-2.80)
Ramachandran outliers	110173	2983 (2.80-2.80)
Sidechain outliers	110143	2985 (2.80-2.80)
RSRZ outliers	101464	2610 (2.80-2.80)

The table below summarises the geometric issues observed across the polymeric chains and their fit to the electron density. The red, orange, yellow and green segments on the lower bar indicate the fraction of residues that contain outliers for  $\geq 3$ , 2, 1 and 0 types of geometric quality criteria. A grey segment represents the fraction of residues that are not modelled. The numeric value for each fraction is indicated below the corresponding segment, with a dot representing fractions  $\leq 5\%$ . The upper red bar (where present) indicates the fraction of residues that have poor fit to the electron density. The numeric value is given above the bar.

Mol	Chain	Length	Quality of chain
1	A	560	<div> <div>4%</div> <div> <div></div> <div>45%</div> <div>47%</div> <div>7%</div> <div>..</div> </div> </div>
1	C	560	<div> <div>5%</div> <div> <div></div> <div>49%</div> <div>43%</div> <div>8%</div> <div>.</div> </div> </div>
2	B	427	<div> <div>2%</div> <div> <div></div> <div>52%</div> <div>38%</div> <div>6%</div> <div>..</div> </div> </div>
2	D	427	<div> <div>4%</div> <div> <div></div> <div>47%</div> <div>44%</div> <div>6%</div> <div>.</div> </div> </div>

The following table lists non-polymeric compounds, carbohydrate monomers and non-standard residues in protein, DNA, RNA chains that are outliers for geometric or electron-density-fit crite-

ria:

Mol	Type	Chain	Res	Chirality	Geometry	Clashes	Electron density
3	EDM	A	561	-	-	X	X
3	EDM	C	561	-	-	X	-

## 2 Entry composition

There are 3 unique types of molecules in this entry. The entry contains 15912 atoms, of which 0 are hydrogens and 0 are deuteriums.

In the tables below, the ZeroOcc column contains the number of atoms modelled with zero occupancy, the AltConf column contains the number of residues with at least one atom in alternate conformation and the Trace column contains the number of residues modelled with at most 2 atoms.

- Molecule 1 is a protein called Reverse transcriptase/ribonuclease H.

Mol	Chain	Residues	Atoms					ZeroOcc	AltConf	Trace
1	A	556	Total	C	N	O	S	0	0	0
			4521	2927	753	833	8			
1	C	556	Total	C	N	O	S	0	0	0
			4521	2927	753	833	8			

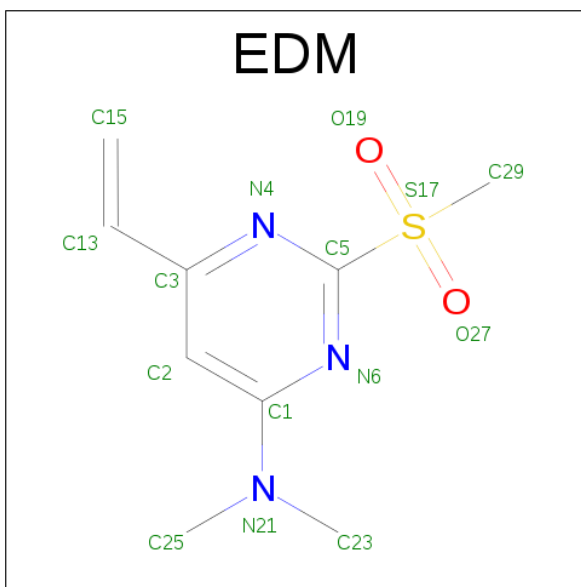
There are 2 discrepancies between the modelled and reference sequences:

Chain	Residue	Modelled	Actual	Comment	Reference
A	478	GLN	GLU	SEE REMARK 999	UNP P03366
C	478	GLN	GLU	SEE REMARK 999	UNP P03366

- Molecule 2 is a protein called p51 RT.

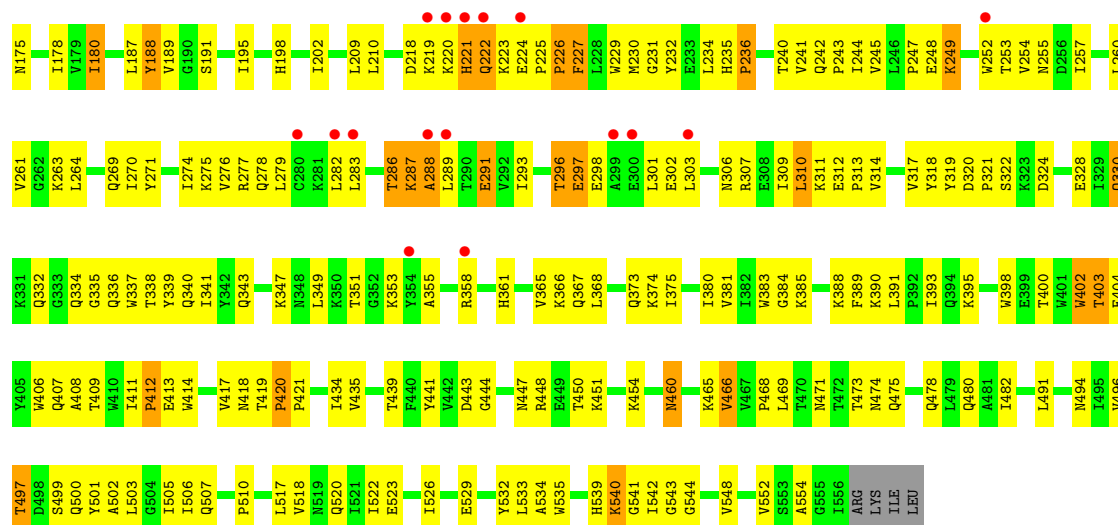
Mol	Chain	Residues	Atoms					ZeroOcc	AltConf	Trace
2	B	415	Total	C	N	O	S	0	0	0
			3420	2225	565	623	7			
2	D	415	Total	C	N	O	S	0	0	0
			3420	2225	565	623	7			

- Molecule 3 is 6-ETHENYL-N,N-DIMETHYL-2-(METHYLSULFONYL)PYRIMIDIN-4-A MINE (three-letter code: EDM) (formula: C<sub>9</sub>H<sub>13</sub>N<sub>3</sub>O<sub>2</sub>S).

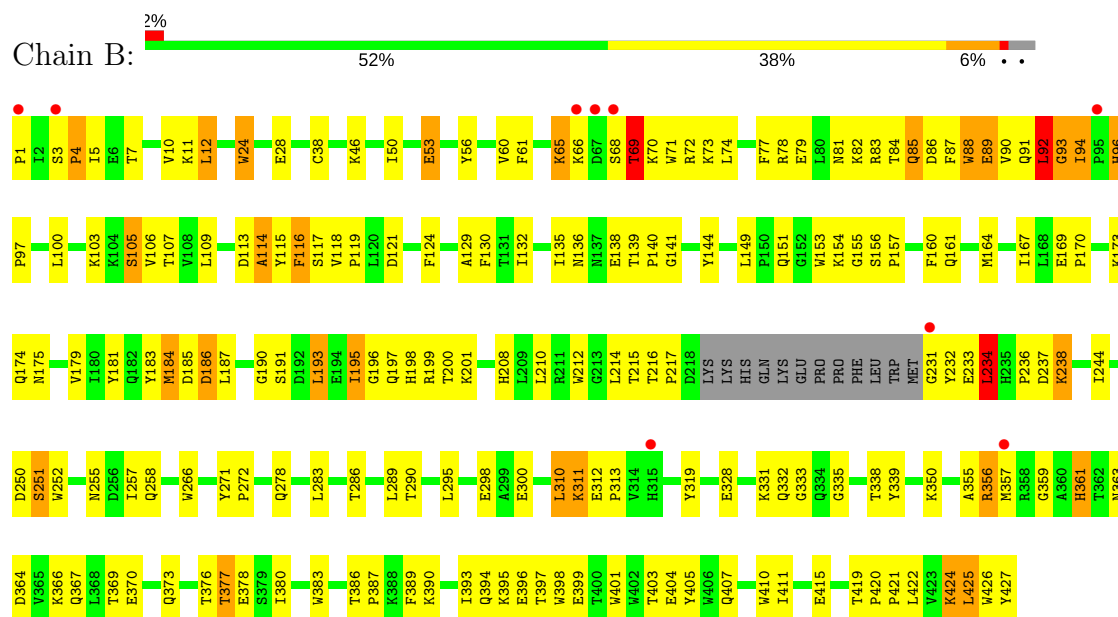


Mol	Chain	Residues	Atoms					ZeroOcc	AltConf
3	C	1	Total	C	N	O	S	0	0
			15	9	3	2	1		
3	A	1	Total	C	N	O	S	0	0
			15	9	3	2	1		

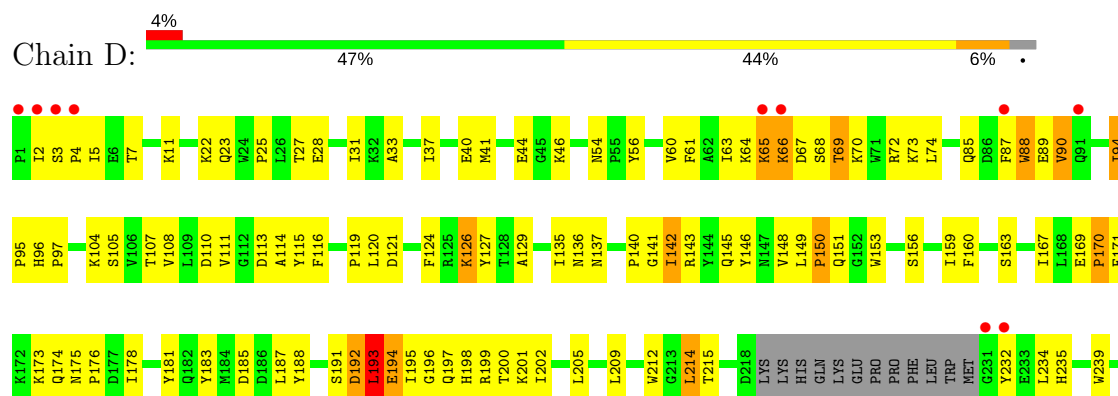


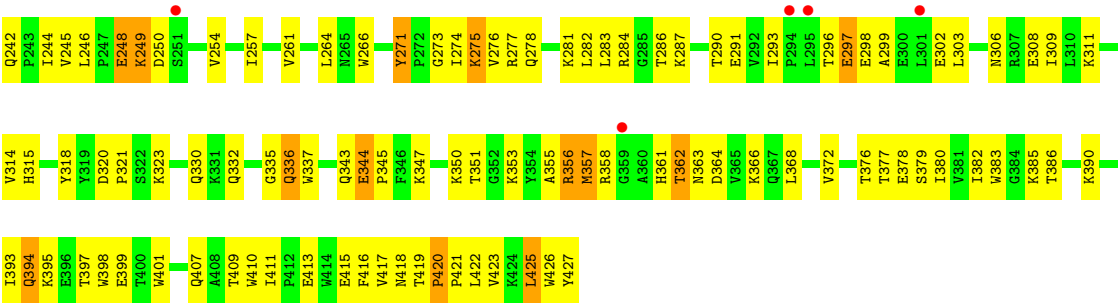


• Molecule 2: p51 RT



• Molecule 2: p51 RT







## 4 Data and refinement statistics

Property	Value	Source
Space group	P 1 21 1	Depositor
Cell constants a, b, c, $\alpha$ , $\beta$ , $\gamma$	92.10Å 72.49Å 216.29Å 90.00° 95.89° 90.00°	Depositor
Resolution (Å)	43.90 – 2.80 48.61 – 2.80	Depositor EDS
% Data completeness (in resolution range)	85.3 (43.90-2.80) 85.3 (48.61-2.80)	Depositor EDS
$R_{merge}$	0.07	Depositor
$R_{sym}$	0.05	Depositor
$\langle I/\sigma(I) \rangle$ <sup>1</sup>	2.59 (at 2.81Å)	Xtriage
Refinement program	PHENIX (phenix.refine: 1.4_57)	Depositor
R, $R_{free}$	0.212 , 0.270 0.203 , 0.262	Depositor DCC
$R_{free}$ test set	3006 reflections (5.00%)	DCC
Wilson B-factor (Å <sup>2</sup> )	79.9	Xtriage
Anisotropy	0.230	Xtriage
Bulk solvent $k_{sol}$ (e/Å <sup>3</sup> ), $B_{sol}$ (Å <sup>2</sup> )	0.31 , 53.5	EDS
L-test for twinning <sup>2</sup>	$\langle  L  \rangle = 0.48$ , $\langle L^2 \rangle = 0.31$	Xtriage
Estimated twinning fraction	No twinning to report.	Xtriage
$F_o, F_c$ correlation	0.94	EDS
Total number of atoms	15912	wwPDB-VP
Average B, all atoms (Å <sup>2</sup> )	91.0	wwPDB-VP

Xtriage's analysis on translational NCS is as follows: *The largest off-origin peak in the Patterson function is 4.97% of the height of the origin peak. No significant pseudotranslation is detected.*

<sup>1</sup>Intensities estimated from amplitudes.

<sup>2</sup>Theoretical values of  $\langle |L| \rangle$ ,  $\langle L^2 \rangle$  for acentric reflections are 0.5, 0.333 respectively for untwinned datasets, and 0.375, 0.2 for perfectly twinned datasets.

## 5 Model quality [i](#)

### 5.1 Standard geometry [i](#)

Bond lengths and bond angles in the following residue types are not validated in this section: EDM

The Z score for a bond length (or angle) is the number of standard deviations the observed value is removed from the expected value. A bond length (or angle) with  $|Z| > 5$  is considered an outlier worth inspection. RMSZ is the root-mean-square of all Z scores of the bond lengths (or angles).

Mol	Chain	Bond lengths		Bond angles	
		RMSZ	# Z  >5	RMSZ	# Z  >5
1	A	0.49	0/4639	0.64	1/6302 (0.0%)
1	C	0.45	0/4639	0.62	0/6302
2	B	0.52	0/3518	0.69	1/4781 (0.0%)
2	D	0.46	0/3518	0.62	0/4781
All	All	0.48	0/16314	0.64	2/22166 (0.0%)

There are no bond length outliers.

All (2) bond angle outliers are listed below:

Mol	Chain	Res	Type	Atoms	Z	Observed(°)	Ideal(°)
2	B	187	LEU	CA-CB-CG	5.29	127.46	115.30
1	A	156	SER	CB-CA-C	-5.18	100.26	110.10

There are no chirality outliers.

There are no planarity outliers.

### 5.2 Too-close contacts [i](#)

In the following table, the Non-H and H(model) columns list the number of non-hydrogen atoms and hydrogen atoms in the chain respectively. The H(added) column lists the number of hydrogen atoms added and optimized by MolProbity. The Clashes column lists the number of clashes within the asymmetric unit, whereas Symm-Clashes lists symmetry related clashes.

Mol	Chain	Non-H	H(model)	H(added)	Clashes	Symm-Clashes
1	A	4521	0	4586	316	0
1	C	4521	0	4586	285	0
2	B	3420	0	3454	194	0
2	D	3420	0	3454	195	0
3	A	15	0	13	11	0

*Continued on next page...*

*Continued from previous page...*

Mol	Chain	Non-H	H(model)	H(added)	Clashes	Symm-Clashes
3	C	15	0	13	8	0
All	All	15912	0	16106	949	0

The all-atom clashscore is defined as the number of clashes found per 1000 atoms (including hydrogen atoms). The all-atom clashscore for this structure is 30.

The worst 5 of 949 close contacts within the same asymmetric unit are listed below, sorted by their clash magnitude.

Atom-1	Atom-2	Interatomic distance (Å)	Clash overlap (Å)
1:C:419:THR:HB	1:C:420:PRO:HD2	1.14	1.11
2:B:216:THR:HB	2:B:217:PRO:HD2	1.31	1.08
1:C:91:GLN:HE22	2:D:140:PRO:HA	1.20	1.06
1:A:435:VAL:HG13	2:B:290:THR:HG21	1.38	1.01
1:A:454:LYS:HB2	1:A:552:VAL:HG23	1.41	1.01

There are no symmetry-related clashes.

## 5.3 Torsion angles [i](#)

### 5.3.1 Protein backbone [i](#)

In the following table, the Percentiles column shows the percent Ramachandran outliers of the chain as a percentile score with respect to all X-ray entries followed by that with respect to entries of similar resolution.

The Analysed column shows the number of residues for which the backbone conformation was analysed, and the total number of residues.

Mol	Chain	Analysed	Favoured	Allowed	Outliers	Percentiles	
1	A	554/560 (99%)	456 (82%)	61 (11%)	37 (7%)	1	4
1	C	554/560 (99%)	437 (79%)	85 (15%)	32 (6%)	2	5
2	B	411/427 (96%)	332 (81%)	57 (14%)	22 (5%)	2	6
2	D	411/427 (96%)	356 (87%)	44 (11%)	11 (3%)	6	20
All	All	1930/1974 (98%)	1581 (82%)	247 (13%)	102 (5%)	2	7

5 of 102 Ramachandran outliers are listed below:

Mol	Chain	Res	Type
1	A	35	VAL

*Continued on next page...*

*Continued from previous page...*

Mol	Chain	Res	Type
1	A	52	PRO
1	A	55	PRO
1	A	65	LYS
1	A	140	PRO

### 5.3.2 Protein sidechains ⓘ

In the following table, the Percentiles column shows the percent sidechain outliers of the chain as a percentile score with respect to all X-ray entries followed by that with respect to entries of similar resolution.

The Analysed column shows the number of residues for which the sidechain conformation was analysed, and the total number of residues.

Mol	Chain	Analysed	Rotameric	Outliers	Percentiles	
1	A	496/500 (99%)	464 (94%)	32 (6%)	20	49
1	C	496/500 (99%)	460 (93%)	36 (7%)	16	42
2	B	377/389 (97%)	351 (93%)	26 (7%)	18	46
2	D	377/389 (97%)	348 (92%)	29 (8%)	15	39
All	All	1746/1778 (98%)	1623 (93%)	123 (7%)	18	45

5 of 123 residues with a non-rotameric sidechain are listed below:

Mol	Chain	Res	Type
2	B	377	THR
1	C	143	ARG
2	D	318	TYR
2	B	425	LEU
1	C	72	ARG

Some sidechains can be flipped to improve hydrogen bonding and reduce clashes. 5 of 52 such sidechains are listed below:

Mol	Chain	Res	Type
2	B	418	ASN
1	C	198	HIS
2	D	255	ASN
1	C	23	GLN
1	C	85	GLN

### 5.3.3 RNA [i](#)

There are no RNA molecules in this entry.

## 5.4 Non-standard residues in protein, DNA, RNA chains [i](#)

There are no non-standard protein/DNA/RNA residues in this entry.

## 5.5 Carbohydrates [i](#)

There are no carbohydrates in this entry.

## 5.6 Ligand geometry [i](#)

2 ligands are modelled in this entry.

In the following table, the Counts columns list the number of bonds (or angles) for which Mogul statistics could be retrieved, the number of bonds (or angles) that are observed in the model and the number of bonds (or angles) that are defined in the chemical component dictionary. The Link column lists molecule types, if any, to which the group is linked. The Z score for a bond length (or angle) is the number of standard deviations the observed value is removed from the expected value. A bond length (or angle) with  $|Z| > 2$  is considered an outlier worth inspection. RMSZ is the root-mean-square of all Z scores of the bond lengths (or angles).

Mol	Type	Chain	Res	Link	Bond lengths			Bond angles		
					Counts	RMSZ	$\# Z  > 2$	Counts	RMSZ	$\# Z  > 2$
3	EDM	A	561	-	15,15,15	2.40	2 (13%)	17,22,22	2.93	6 (35%)
3	EDM	C	561	-	15,15,15	2.47	2 (13%)	17,22,22	3.22	7 (41%)

In the following table, the Chirals column lists the number of chiral outliers, the number of chiral centers analysed, the number of these observed in the model and the number defined in the chemical component dictionary. Similar counts are reported in the Torsion and Rings columns. '-' means no outliers of that kind were identified.

Mol	Type	Chain	Res	Link	Chirals	Torsions	Rings
3	EDM	A	561	-	-	0/12/12/12	0/1/1/1
3	EDM	C	561	-	-	0/12/12/12	0/1/1/1

All (4) bond length outliers are listed below:

Mol	Chain	Res	Type	Atoms	Z	Observed(Å)	Ideal(Å)
3	C	561	EDM	C5-S17	-8.31	1.75	1.80

*Continued on next page...*

*Continued from previous page...*

Mol	Chain	Res	Type	Atoms	Z	Observed(Å)	Ideal(Å)
3	A	561	EDM	C5-S17	-8.24	1.75	1.80
3	C	561	EDM	O19-S17	2.14	1.50	1.43
3	A	561	EDM	O19-S17	2.35	1.50	1.43

The worst 5 of 13 bond angle outliers are listed below:

Mol	Chain	Res	Type	Atoms	Z	Observed(°)	Ideal(°)
3	A	561	EDM	O19-S17-O27	-4.64	109.30	117.84
3	C	561	EDM	O19-S17-O27	-4.60	109.38	117.84
3	C	561	EDM	O19-S17-C5	2.14	109.34	107.50
3	A	561	EDM	O27-S17-C5	2.55	109.70	107.50
3	C	561	EDM	O27-S17-C5	2.95	110.04	107.50

There are no chirality outliers.

There are no torsion outliers.

There are no ring outliers.

2 monomers are involved in 19 short contacts:

Mol	Chain	Res	Type	Clashes	Symm-Clashes
3	A	561	EDM	11	0
3	C	561	EDM	8	0

## 5.7 Other polymers [i](#)

There are no such residues in this entry.

## 5.8 Polymer linkage issues [i](#)

There are no chain breaks in this entry.

## 6 Fit of model and data [i](#)

### 6.1 Protein, DNA and RNA chains [i](#)

In the following table, the column labelled ‘#RSRZ> 2’ contains the number (and percentage) of RSRZ outliers, followed by percent RSRZ outliers for the chain as percentile scores relative to all X-ray entries and entries of similar resolution. The OWAB column contains the minimum, median, 95<sup>th</sup> percentile and maximum values of the occupancy-weighted average B-factor per residue. The column labelled ‘Q< 0.9’ lists the number of (and percentage) of residues with an average occupancy less than 0.9.

Mol	Chain	Analysed	<RSRZ>	#RSRZ>2		OWAB(Å <sup>2</sup> )	Q<0.9
1	A	556/560 (99%)	0.02	24 (4%)	36 26	56, 84, 151, 171	0
1	C	556/560 (99%)	0.08	29 (5%)	28 19	55, 91, 156, 177	0
2	B	415/427 (97%)	-0.09	9 (2%)	62 52	49, 75, 119, 145	0
2	D	415/427 (97%)	0.07	15 (3%)	43 32	55, 86, 129, 157	0
All	All	1942/1974 (98%)	0.02	77 (3%)	39 28	49, 85, 144, 177	0

The worst 5 of 77 RSRZ outliers are listed below:

Mol	Chain	Res	Type	RSRZ
1	C	299	ALA	7.7
2	D	3	SER	6.1
2	B	3	SER	5.6
2	B	1	PRO	5.5
2	D	1	PRO	5.4

### 6.2 Non-standard residues in protein, DNA, RNA chains [i](#)

There are no non-standard protein/DNA/RNA residues in this entry.

### 6.3 Carbohydrates [i](#)

There are no carbohydrates in this entry.

### 6.4 Ligands [i](#)

In the following table, the Atoms column lists the number of modelled atoms in the group and the number defined in the chemical component dictionary. LLDF column lists the quality of electron density of the group with respect to its neighbouring residues in protein, DNA or RNA chains. The B-factors column lists the minimum, median, 95<sup>th</sup> percentile and maximum values of B factors

of atoms in the group. The column labelled 'Q< 0.9' lists the number of atoms with occupancy less than 0.9.

Mol	Type	Chain	Res	Atoms	RSCC	RSR	LLDF	B-factors( $\text{\AA}^2$ )	Q<0.9
3	EDM	A	561	15/15	0.78	0.72	6.85	118,132,136,150	0
3	EDM	C	561	15/15	0.82	0.27	0.76	114,131,137,145	0

## 6.5 Other polymers [i](#)

There are no such residues in this entry.