



Full wwPDB X-ray Structure Validation Report ⓘ

Nov 15, 2017 – 07:57 PM EST

PDB ID : 5IUL
Title : Crystal structure of the DesK-DesR complex in the phosphotransfer state with high Mg²⁺ (150 mM) and BeF₃
Authors : Trajtenberg, F.; Imelio, J.A.; Larrieux, N.; Buschiazzi, A.
Deposited on : unknown
Resolution : 3.15 Å(reported)

This is a Full wwPDB X-ray Structure Validation Report for a publicly released PDB entry.

We welcome your comments at validation@mail.wwpdb.org

A user guide is available at

<http://wwpdb.org/validation/2016/XrayValidationReportHelp>

with specific help available everywhere you see the ⓘ symbol.

The following versions of software and data (see [references ⓘ](#)) were used in the production of this report:

MolProbity : 4.02b-467
Mogul : 1.7.2 (RC1), CSD as538be (2017)
Xtriage (Phenix) : 1.9-1692
EDS : rb-20030345
Percentile statistics : 20161228.v01 (using entries in the PDB archive December 28th 2016)
Refmac : 5.8.0135
CCP4 : 6.5.0
Ideal geometry (proteins) : Engh & Huber (2001)
Ideal geometry (DNA, RNA) : Parkinson et al. (1996)
Validation Pipeline (wwPDB-VP) : rb-20030345

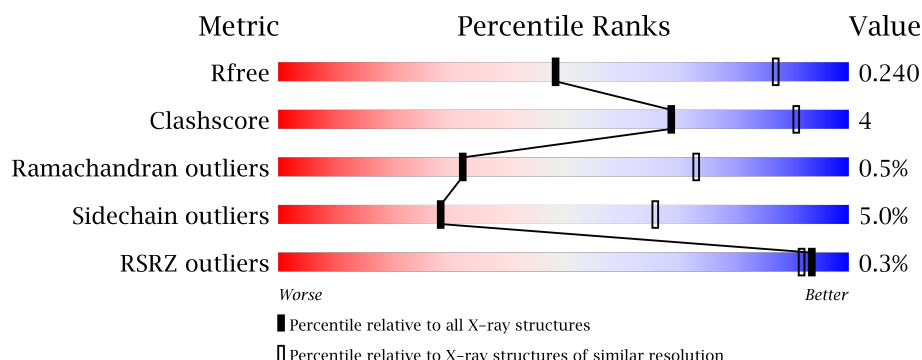
1 Overall quality at a glance

The following experimental techniques were used to determine the structure:

X-RAY DIFFRACTION

The reported resolution of this entry is 3.15 Å.

Percentile scores (ranging between 0-100) for global validation metrics of the entry are shown in the following graphic. The table shows the number of entries on which the scores are based.




Metric	Whole archive (#Entries)	Similar resolution (#Entries, resolution range(Å))
R_{free}	100719	1259 (3.20-3.12)
Clashscore	112137	1397 (3.20-3.12)
Ramachandran outliers	110173	1368 (3.20-3.12)
Sidechain outliers	110143	1367 (3.20-3.12)
RSRZ outliers	101464	1264 (3.20-3.12)

The table below summarises the geometric issues observed across the polymeric chains and their fit to the electron density. The red, orange, yellow and green segments on the lower bar indicate the fraction of residues that contain outliers for ≥ 3 , 2, 1 and 0 types of geometric quality criteria. A grey segment represents the fraction of residues that are not modelled. The numeric value for each fraction is indicated below the corresponding segment, with a dot representing fractions $\leq 5\%$. The upper red bar (where present) indicates the fraction of residues that have poor fit to the electron density. The numeric value is given above the bar.

Mol	Chain	Length	Quality of chain
1	A	218	
1	B	218	
1	D	218	
1	E	218	
2	C	139	

Continued on next page...

Continued from previous page...

Mol	Chain	Length	Quality of chain
2	F	139	 A horizontal bar chart showing the quality of chain F. The bar is divided into three segments: a green segment representing 84%, a yellow segment representing 11%, and a grey segment representing 5%. The percentages are labeled below the corresponding segments.

2 Entry composition

There are 6 unique types of molecules in this entry. The entry contains 8859 atoms, of which 0 are hydrogens and 0 are deuteriums.

In the tables below, the ZeroOcc column contains the number of atoms modelled with zero occupancy, the AltConf column contains the number of residues with at least one atom in alternate conformation and the Trace column contains the number of residues modelled with at most 2 atoms.

- Molecule 1 is a protein called Sensor histidine kinase DesK.

Mol	Chain	Residues	Atoms					ZeroOcc	AltConf	Trace
1	A	211	Total	C	N	O	S	0	0	0
			1696	1056	301	332	7			
1	B	207	Total	C	N	O	S	0	0	0
			1644	1020	295	323	6			
1	D	213	Total	C	N	O	S	0	0	0
			1708	1062	303	336	7			
1	E	207	Total	C	N	O	S	0	0	0
			1643	1019	296	322	6			

There are 8 discrepancies between the modelled and reference sequences:

Chain	Residue	Modelled	Actual	Comment	Reference
A	153	GLY	-	expression tag	UNP O34757
A	188	GLU	HIS	engineered mutation	UNP O34757
B	153	GLY	-	expression tag	UNP O34757
B	188	GLU	HIS	engineered mutation	UNP O34757
D	153	GLY	-	expression tag	UNP O34757
D	188	GLU	HIS	engineered mutation	UNP O34757
E	153	GLY	-	expression tag	UNP O34757
E	188	GLU	HIS	engineered mutation	UNP O34757

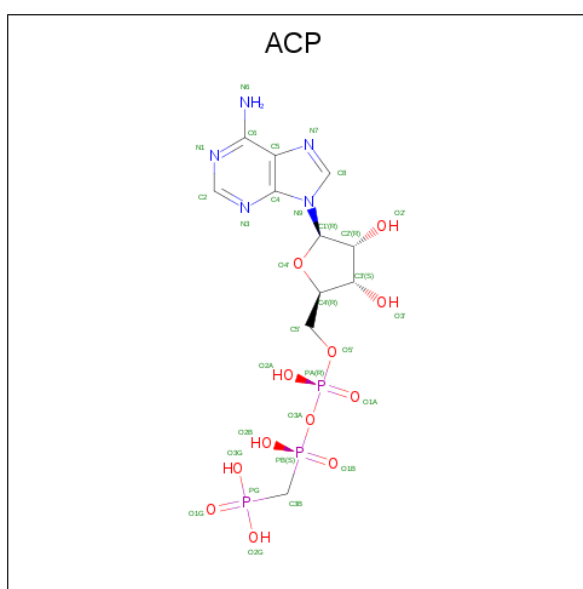
- Molecule 2 is a protein called Transcriptional regulatory protein DesR.

Mol	Chain	Residues	Atoms					ZeroOcc	AltConf	Trace
2	C	132	Total	C	N	O	S	0	0	0
			1006	635	165	197	9			
2	F	132	Total	C	N	O	S	0	0	0
			1012	641	165	197	9			

There are 8 discrepancies between the modelled and reference sequences:

Chain	Residue	Modelled	Actual	Comment	Reference
C	-3	GLY	-	expression tag	UNP O34723
C	-2	SER	-	expression tag	UNP O34723
C	-1	GLY	-	expression tag	UNP O34723
C	0	SER	-	expression tag	UNP O34723
F	-3	GLY	-	expression tag	UNP O34723
F	-2	SER	-	expression tag	UNP O34723
F	-1	GLY	-	expression tag	UNP O34723
F	0	SER	-	expression tag	UNP O34723

- Molecule 3 is PHOSPHOMETHYLPHOSPHONIC ACID ADENYLATE ESTER (three-letter code: ACP) (formula: C₁₁H₁₈N₅O₁₂P₃).



Mol	Chain	Residues	Atoms					ZeroOcc	AltConf
3	A	1	Total	C	N	O	P	0	0
			31	11	5	12	3		
3	B	1	Total	C	N	O	P	0	0
			31	11	5	12	3		
3	D	1	Total	C	N	O	P	0	0
			31	11	5	12	3		
3	E	1	Total	C	N	O	P	0	0
			31	11	5	12	3		

- Molecule 4 is MAGNESIUM ION (three-letter code: MG) (formula: Mg).

Mol	Chain	Residues	Atoms		ZeroOcc	AltConf
4	D	1	Total	Mg	0	0
			1	1		

Continued on next page...

Continued from previous page...

Mol	Chain	Residues	Atoms		ZeroOcc	AltConf
4	E	1	Total 1	Mg 1	0	0
4	B	1	Total 1	Mg 1	0	0
4	C	1	Total 1	Mg 1	0	0
4	A	1	Total 1	Mg 1	0	0
4	F	1	Total 1	Mg 1	0	0

- Molecule 5 is POTASSIUM ION (three-letter code: K) (formula: K).

Mol	Chain	Residues	Atoms		ZeroOcc	AltConf
5	C	2	Total 2	K 2	0	0

- Molecule 6 is water.

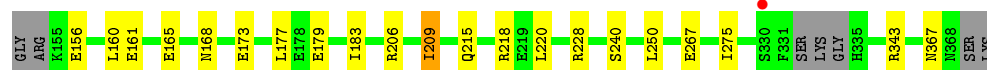
Mol	Chain	Residues	Atoms		ZeroOcc	AltConf
6	A	3	Total 3	O 3	0	0
6	B	1	Total 1	O 1	0	0
6	C	6	Total 6	O 6	0	0
6	D	3	Total 3	O 3	0	0
6	E	1	Total 1	O 1	0	0
6	F	4	Total 4	O 4	0	0

3 Residue-property plots [i](#)


These plots are drawn for all protein, RNA and DNA chains in the entry. The first graphic for a chain summarises the proportions of the various outlier classes displayed in the second graphic. The second graphic shows the sequence view annotated by issues in geometry and electron density. Residues are color-coded according to the number of geometric quality criteria for which they contain at least one outlier: green = 0, yellow = 1, orange = 2 and red = 3 or more. A red dot above a residue indicates a poor fit to the electron density ($RSRZ > 2$). Stretches of 2 or more consecutive residues without any outlier are shown as a green connector. Residues present in the sample, but not in the model, are shown in grey.

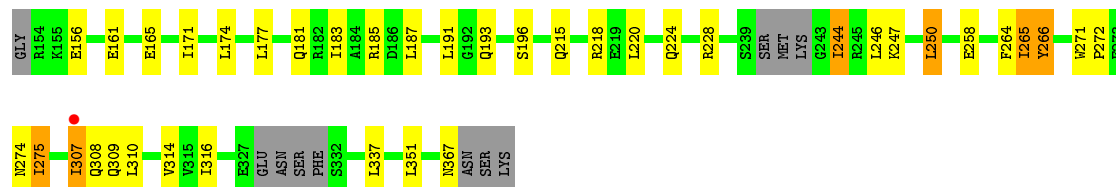
- Molecule 1: Sensor histidine kinase DesK

Chain A: 



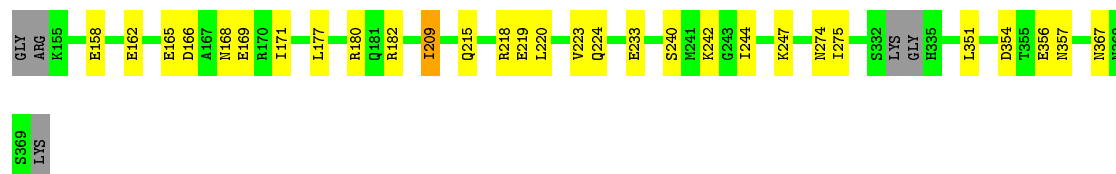
- Molecule 1: Sensor histidine kinase DesK

Chain B: 




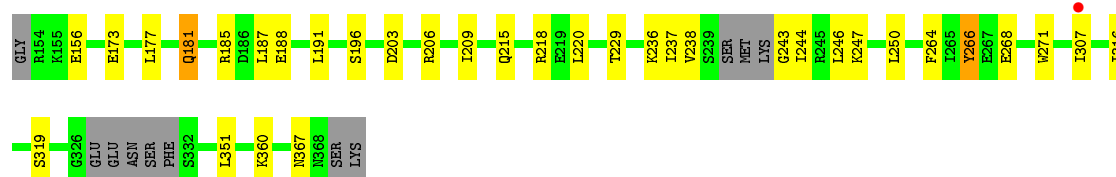
- Molecule 1: Sensor histidine kinase DesK

Chain D: 



- Molecule 1: Sensor histidine kinase DesK

Chain E: 



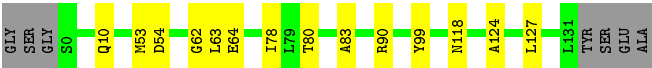
- Molecule 2: Transcriptional regulatory protein DesR

Chain C:

85%

10%

5%



● Molecule 2: Transcriptional regulatory protein DesR

Chain F:

84%

11%

5%



4 Data and refinement statistics

Property	Value	Source
Space group	P 1 21 1	Depositor
Cell constants a, b, c, α , β , γ	88.19Å 116.68Å 91.88Å 90.00° 117.10° 90.00°	Depositor
Resolution (Å)	38.59 – 3.15 38.59 – 3.15	Depositor EDS
% Data completeness (in resolution range)	97.5 (38.59-3.15) 97.8 (38.59-3.15)	Depositor EDS
R_{merge}	(Not available)	Depositor
R_{sym}	(Not available)	Depositor
$\langle I/\sigma(I) \rangle$ ¹	2.43 (at 3.18Å)	Xtriage
Refinement program	BUSTER-TNT 2.10.2	Depositor
R, R_{free}	0.190 , 0.231 0.199 , 0.240	Depositor DCC
R_{free} test set	1361 reflections (5.11%)	DCC
Wilson B-factor (Å ²)	76.4	Xtriage
Anisotropy	0.603	Xtriage
Bulk solvent k_{sol} (e/Å ³), B_{sol} (Å ²)	0.33 , 63.2	EDS
L-test for twinning ²	$\langle L \rangle = 0.46$, $\langle L^2 \rangle = 0.28$	Xtriage
Estimated twinning fraction	0.038 for h,-k,-h-l	Xtriage
F_o, F_c correlation	0.94	EDS
Total number of atoms	8859	wwPDB-VP
Average B, all atoms (Å ²)	89.0	wwPDB-VP

Xtriage's analysis on translational NCS is as follows: *The largest off-origin peak in the Patterson function is 4.70% of the height of the origin peak. No significant pseudotranslation is detected.*

¹Intensities estimated from amplitudes.

²Theoretical values of $\langle |L| \rangle$, $\langle L^2 \rangle$ for acentric reflections are 0.5, 0.333 respectively for untwinned datasets, and 0.375, 0.2 for perfectly twinned datasets.

5 Model quality [i](#)

5.1 Standard geometry [i](#)

Bond lengths and bond angles in the following residue types are not validated in this section: K, ACP, MG

The Z score for a bond length (or angle) is the number of standard deviations the observed value is removed from the expected value. A bond length (or angle) with $|Z| > 5$ is considered an outlier worth inspection. RMSZ is the root-mean-square of all Z scores of the bond lengths (or angles).

Mol	Chain	Bond lengths		Bond angles	
		RMSZ	$\# Z > 5$	RMSZ	$\# Z > 5$
1	A	0.49	0/1710	0.71	0/2292
1	B	0.50	0/1654	0.78	2/2216 (0.1%)
1	D	0.49	0/1722	0.72	0/2308
1	E	0.51	0/1653	0.74	0/2215
2	C	0.54	0/1017	0.73	0/1366
2	F	0.52	0/1024	0.71	0/1376
All	All	0.50	0/8780	0.73	2/11773 (0.0%)

There are no bond length outliers.

All (2) bond angle outliers are listed below:

Mol	Chain	Res	Type	Atoms	Z	Observed(°)	Ideal(°)
1	B	265	ILE	CB-CG1-CD1	5.92	130.49	113.90
1	B	244	ILE	C-N-CA	5.67	135.88	121.70

There are no chirality outliers.

There are no planarity outliers.

5.2 Too-close contacts [i](#)

In the following table, the Non-H and H(model) columns list the number of non-hydrogen atoms and hydrogen atoms in the chain respectively. The H(added) column lists the number of hydrogen atoms added and optimized by MolProbity. The Clashes column lists the number of clashes within the asymmetric unit, whereas Symm-Clashes lists symmetry related clashes.

Mol	Chain	Non-H	H(model)	H(added)	Clashes	Symm-Clashes
1	A	1696	0	1742	11	0
1	B	1644	0	1686	24	0
1	D	1708	0	1752	15	0

Continued on next page...

Continued from previous page...

Mol	Chain	Non-H	H(model)	H(added)	Clashes	Symm-Clashes
1	E	1643	0	1686	21	0
2	C	1006	0	1033	10	0
2	F	1012	0	1037	8	0
3	A	31	0	14	0	0
3	B	31	0	14	1	0
3	D	31	0	14	0	0
3	E	31	0	14	0	0
4	A	1	0	0	0	0
4	B	1	0	0	0	0
4	C	1	0	0	0	0
4	D	1	0	0	0	0
4	E	1	0	0	0	0
4	F	1	0	0	0	0
5	C	2	0	0	0	0
6	A	3	0	0	0	0
6	B	1	0	0	0	0
6	C	6	0	0	0	0
6	D	3	0	0	0	0
6	E	1	0	0	0	0
6	F	4	0	0	0	0
All	All	8859	0	8992	76	0

The all-atom clashscore is defined as the number of clashes found per 1000 atoms (including hydrogen atoms). The all-atom clashscore for this structure is 4.

All (76) close contacts within the same asymmetric unit are listed below, sorted by their clash magnitude.

Atom-1	Atom-2	Interatomic distance (Å)	Clash overlap (Å)
1:A:220:LEU:HD21	1:B:220:LEU:HD21	1.50	0.92
1:B:187:LEU:HD22	1:B:191:LEU:HD12	1.65	0.79
1:B:308:GLN:HB2	1:B:310:LEU:HD21	1.65	0.78
1:E:244:ILE:HG22	1:E:247:LYS:H	1.54	0.73
1:D:242:LYS:HA	1:E:181:GLN:HE22	1.55	0.71
1:E:319:SER:HB2	1:E:360:LYS:HG2	1.71	0.71
1:B:307:ILE:HG13	1:B:316:ILE:HG12	1.75	0.69
1:E:319:SER:CB	1:E:360:LYS:HG2	2.22	0.69
1:B:244:ILE:HG22	1:B:247:LYS:H	1.59	0.68
1:B:275:ILE:HG12	1:B:314:VAL:HG21	1.75	0.66
2:C:64:GLU:HG3	2:C:90:ARG:HH22	1.62	0.65
2:F:99:TYR:CE2	2:F:127:LEU:HB3	2.31	0.65
2:F:64:GLU:HG3	2:F:90:ARG:HH22	1.63	0.64

Continued on next page...

Continued from previous page...

Atom-1	Atom-2	Interatomic distance (Å)	Clash overlap (Å)
1:A:343:ARG:HG3	1:B:174:LEU:HD11	1.81	0.63
1:B:308:GLN:HB2	1:B:310:LEU:CD2	2.30	0.62
1:D:354:ASP:OD1	1:D:356:GLU:HG2	2.01	0.61
1:B:250:LEU:HB2	1:B:271:TRP:CH2	2.37	0.60
2:F:99:TYR:HE2	2:F:127:LEU:HB3	1.67	0.59
2:F:10:GLN:HB2	2:F:13:LEU:HD12	1.83	0.59
1:B:264:PHE:CE2	1:B:266:TYR:CD1	2.93	0.56
1:D:224:GLN:HE22	1:E:206:ARG:HD3	1.70	0.56
1:E:268:GLU:HA	1:E:271:TRP:CD1	2.42	0.55
1:B:337:LEU:HD13	3:B:401:ACP:O5'	2.06	0.55
1:E:307:ILE:HG13	1:E:316:ILE:HG12	1.90	0.53
2:C:64:GLU:HG3	2:C:90:ARG:NH2	2.25	0.52
1:D:356:GLU:HG3	1:D:357:ASN:H	1.75	0.51
1:A:156:GLU:CD	1:A:156:GLU:H	2.15	0.51
1:B:215:GLN:HA	1:B:218:ARG:HD2	1.93	0.50
1:E:215:GLN:HA	1:E:218:ARG:HD2	1.92	0.50
2:F:64:GLU:HG3	2:F:90:ARG:NH2	2.26	0.49
1:E:246:LEU:HD21	1:E:307:ILE:HD11	1.94	0.49
1:E:206:ARG:HA	1:E:209:ILE:HD12	1.94	0.49
1:A:215:GLN:HA	1:A:218:ARG:HD2	1.94	0.48
1:E:177:LEU:O	1:E:181:GLN:HB2	2.14	0.47
1:B:308:GLN:CB	1:B:310:LEU:HD21	2.42	0.47
1:D:215:GLN:HA	1:D:218:ARG:HD2	1.95	0.47
2:C:124:ALA:HB3	2:C:127:LEU:HD12	1.97	0.47
1:B:271:TRP:HA	1:B:307:ILE:CG2	2.45	0.47
1:E:187:LEU:HD22	1:E:191:LEU:HD12	1.96	0.47
2:C:53:MET:HB3	2:C:78:ILE:HD13	1.97	0.46
1:D:275:ILE:HA	1:D:367:ASN:OD1	2.15	0.46
2:C:83:ALA:HB2	2:C:127:LEU:HD23	1.96	0.46
1:D:209:ILE:HD11	1:E:220:LEU:HD12	1.97	0.46
1:D:220:LEU:HD21	1:E:220:LEU:HD21	1.98	0.46
1:B:272:PRO:HD3	1:B:307:ILE:HG23	1.97	0.46
1:E:264:PHE:CE2	1:E:266:TYR:CD1	3.04	0.45
1:A:275:ILE:HA	1:A:367:ASN:OD1	2.16	0.45
1:B:274:ASN:C	1:B:275:ILE:HG13	2.37	0.45
2:F:53:MET:HB3	2:F:78:ILE:HD13	1.97	0.45
2:F:63:LEU:HD13	2:F:90:ARG:HD3	1.99	0.45
1:A:183:ILE:HG21	1:B:183:ILE:HG21	1.98	0.45
1:A:183:ILE:HD13	1:B:183:ILE:HG21	1.98	0.45
1:D:220:LEU:HD21	1:E:220:LEU:CD2	2.47	0.44
1:D:224:GLN:HE22	1:E:206:ARG:HH11	1.65	0.44

Continued on next page...

Continued from previous page...

Atom-1	Atom-2	Interatomic distance (Å)	Clash overlap (Å)
2:C:63:LEU:HD13	2:C:90:ARG:HD3	2.00	0.44
1:D:158:GLU:O	1:D:162:GLU:HG2	2.18	0.43
1:B:224:GLN:O	1:B:228:ARG:HG2	2.18	0.43
2:C:54:ASP:O	2:C:62:GLY:HA3	2.19	0.43
1:B:193:GLN:HG3	2:C:10:GLN:OE1	2.19	0.43
1:D:219:GLU:O	1:D:223:VAL:HG23	2.20	0.42
1:B:246:LEU:HG	1:B:271:TRP:CZ3	2.54	0.42
1:D:180:ARG:HB3	1:E:237:ILE:HG23	2.02	0.42
1:B:351:LEU:HD23	1:B:351:LEU:C	2.40	0.42
1:D:244:ILE:H	1:D:244:ILE:HD12	1.85	0.42
1:E:238:VAL:HB	1:E:243:GLY:N	2.34	0.42
1:E:264:PHE:CE2	1:E:266:TYR:CG	3.09	0.41
2:F:54:ASP:O	2:F:62:GLY:HA3	2.20	0.41
1:B:177:LEU:O	1:B:181:GLN:HG2	2.20	0.41
2:C:99:TYR:CZ	2:C:127:LEU:HD22	2.56	0.41
1:A:209:ILE:HD11	1:B:220:LEU:HD12	2.03	0.41
1:E:351:LEU:HD23	1:E:351:LEU:C	2.41	0.41
1:A:179:GLU:OE1	1:A:179:GLU:HA	2.21	0.40
2:C:80:THR:CG2	2:C:99:TYR:HE1	2.34	0.40
1:A:206:ARG:HA	1:A:209:ILE:HD12	2.03	0.40
1:D:351:LEU:C	1:D:351:LEU:HD23	2.42	0.40
1:A:250:LEU:HD12	1:A:250:LEU:HA	1.90	0.40

There are no symmetry-related clashes.

5.3 Torsion angles ⓘ

5.3.1 Protein backbone ⓘ

In the following table, the Percentiles column shows the percent Ramachandran outliers of the chain as a percentile score with respect to all X-ray entries followed by that with respect to entries of similar resolution.

The Analysed column shows the number of residues for which the backbone conformation was analysed, and the total number of residues.

Mol	Chain	Analysed	Favoured	Allowed	Outliers	Percentiles
1	A	207/218 (95%)	201 (97%)	5 (2%)	1 (0%)	32 73
1	B	201/218 (92%)	195 (97%)	6 (3%)	0	100 100
1	D	209/218 (96%)	199 (95%)	9 (4%)	1 (0%)	32 73

Continued on next page...

Continued from previous page...

Mol	Chain	Analysed	Favoured	Allowed	Outliers	Percentiles	
1	E	201/218 (92%)	192 (96%)	7 (4%)	2 (1%)	18	60
2	C	130/139 (94%)	127 (98%)	3 (2%)	0	100	100
2	F	130/139 (94%)	126 (97%)	3 (2%)	1 (1%)	22	64
All	All	1078/1150 (94%)	1040 (96%)	33 (3%)	5 (0%)	32	73

All (5) Ramachandran outliers are listed below:

Mol	Chain	Res	Type
1	A	209	ILE
1	E	367	ASN
1	E	236	LYS
2	F	129	GLU
1	D	209	ILE

5.3.2 Protein sidechains ⓘ

In the following table, the Percentiles column shows the percent sidechain outliers of the chain as a percentile score with respect to all X-ray entries followed by that with respect to entries of similar resolution.

The Analysed column shows the number of residues for which the sidechain conformation was analysed, and the total number of residues.

Mol	Chain	Analysed	Rotameric	Outliers	Percentiles	
1	A	189/194 (97%)	180 (95%)	9 (5%)	30	68
1	B	181/194 (93%)	167 (92%)	14 (8%)	15	48
1	D	191/194 (98%)	180 (94%)	11 (6%)	23	60
1	E	181/194 (93%)	171 (94%)	10 (6%)	25	62
2	C	109/113 (96%)	108 (99%)	1 (1%)	82	94
2	F	109/113 (96%)	106 (97%)	3 (3%)	49	80
All	All	960/1002 (96%)	912 (95%)	48 (5%)	28	66

All (48) residues with a non-rotameric sidechain are listed below:

Mol	Chain	Res	Type
1	A	160	LEU
1	A	161	GLU
1	A	165	GLU

Continued on next page...

Continued from previous page...

Mol	Chain	Res	Type
1	A	168	ASN
1	A	173	GLU
1	A	177	LEU
1	A	228	ARG
1	A	240	SER
1	A	267	GLU
1	B	156	GLU
1	B	161	GLU
1	B	165	GLU
1	B	171	ILE
1	B	185	ARG
1	B	196	SER
1	B	250	LEU
1	B	258	GLU
1	B	265	ILE
1	B	266	TYR
1	B	275	ILE
1	B	307	ILE
1	B	309	GLN
1	B	367	ASN
2	C	118	ASN
1	D	165	GLU
1	D	166	ASP
1	D	168	ASN
1	D	169	GLU
1	D	171	ILE
1	D	177	LEU
1	D	182	ARG
1	D	233	GLU
1	D	240	SER
1	D	247	LYS
1	D	274	ASN
1	E	156	GLU
1	E	173	GLU
1	E	181	GLN
1	E	185	ARG
1	E	188	GLU
1	E	196	SER
1	E	203	ASP
1	E	229	THR
1	E	250	LEU
1	E	266	TYR

Continued on next page...

Continued from previous page...

Mol	Chain	Res	Type
2	F	118	ASN
2	F	131	LEU
2	F	132	TYR

Some sidechains can be flipped to improve hydrogen bonding and reduce clashes. All (4) such sidechains are listed below:

Mol	Chain	Res	Type
1	A	281	ASN
1	B	274	ASN
1	E	181	GLN
1	E	274	ASN

5.3.3 RNA ⓘ

There are no RNA molecules in this entry.

5.4 Non-standard residues in protein, DNA, RNA chains ⓘ

There are no non-standard protein/DNA/RNA residues in this entry.

5.5 Carbohydrates ⓘ

There are no carbohydrates in this entry.

5.6 Ligand geometry ⓘ

Of 12 ligands modelled in this entry, 8 are monoatomic - leaving 4 for Mogul analysis.

In the following table, the Counts columns list the number of bonds (or angles) for which Mogul statistics could be retrieved, the number of bonds (or angles) that are observed in the model and the number of bonds (or angles) that are defined in the Chemical Component Dictionary. The Link column lists molecule types, if any, to which the group is linked. The Z score for a bond length (or angle) is the number of standard deviations the observed value is removed from the expected value. A bond length (or angle) with $|Z| > 2$ is considered an outlier worth inspection. RMSZ is the root-mean-square of all Z scores of the bond lengths (or angles).

Mol	Type	Chain	Res	Link	Bond lengths			Bond angles		
					Counts	RMSZ	$\# Z > 2$	Counts	RMSZ	$\# Z > 2$
3	ACP	A	401	4	27,33,33	0.64	0	30,52,52	0.79	1 (3%)

Mol	Type	Chain	Res	Link	Bond lengths			Bond angles		
					Counts	RMSZ	# Z > 2	Counts	RMSZ	# Z > 2
3	ACP	B	401	4	27,33,33	1.09	3 (11%)	30,52,52	0.86	1 (3%)
3	ACP	D	401	4	27,33,33	0.89	2 (7%)	30,52,52	0.82	1 (3%)
3	ACP	E	401	4	27,33,33	1.06	3 (11%)	30,52,52	0.82	1 (3%)

In the following table, the Chirals column lists the number of chiral outliers, the number of chiral centers analysed, the number of these observed in the model and the number defined in the Chemical Component Dictionary. Similar counts are reported in the Torsion and Rings columns. '-' means no outliers of that kind were identified.

Mol	Type	Chain	Res	Link	Chirals	Torsions	Rings
3	ACP	A	401	4	-	0/15/38/38	0/3/3/3
3	ACP	B	401	4	-	0/15/38/38	0/3/3/3
3	ACP	D	401	4	-	0/15/38/38	0/3/3/3
3	ACP	E	401	4	-	0/15/38/38	0/3/3/3

All (8) bond length outliers are listed below:

Mol	Chain	Res	Type	Atoms	Z	Observed(Å)	Ideal(Å)
3	E	401	ACP	PB-O2B	-3.34	1.48	1.56
3	B	401	ACP	PB-O2B	-3.32	1.48	1.56
3	D	401	ACP	PG-O3G	-2.11	1.49	1.54
3	E	401	ACP	PG-O3G	-2.10	1.49	1.54
3	B	401	ACP	PG-O3G	-2.09	1.50	1.54
3	E	401	ACP	PG-O1G	2.09	1.54	1.50
3	B	401	ACP	PG-O1G	2.21	1.55	1.50
3	D	401	ACP	PG-O1G	2.32	1.55	1.50

All (4) bond angle outliers are listed below:

Mol	Chain	Res	Type	Atoms	Z	Observed(°)	Ideal(°)
3	A	401	ACP	O1G-PG-C3B	-2.22	106.33	111.22
3	B	401	ACP	O3G-PG-O2G	2.32	114.93	108.14
3	E	401	ACP	O3G-PG-O2G	2.32	114.94	108.14
3	D	401	ACP	O3G-PG-O2G	2.66	115.93	108.14

There are no chirality outliers.

There are no torsion outliers.

There are no ring outliers.

1 monomer is involved in 1 short contact:

Mol	Chain	Res	Type	Clashes	Symm-Clashes
3	B	401	ACP	1	0

5.7 Other polymers [i](#)

There are no such residues in this entry.

5.8 Polymer linkage issues [i](#)

There are no chain breaks in this entry.

6 Fit of model and data [i](#)

6.1 Protein, DNA and RNA chains [i](#)

In the following table, the column labelled ‘#RSRZ> 2’ contains the number (and percentage) of RSRZ outliers, followed by percent RSRZ outliers for the chain as percentile scores relative to all X-ray entries and entries of similar resolution. The OWAB column contains the minimum, median, 95th percentile and maximum values of the occupancy-weighted average B-factor per residue. The column labelled ‘Q< 0.9’ lists the number of (and percentage) of residues with an average occupancy less than 0.9.

Mol	Chain	Analysed	<RSRZ>	#RSRZ>2	OWAB(Å ²)	Q<0.9
1	A	211/218 (96%)	0.09	1 (0%) 90 85	47, 86, 148, 173	0
1	B	207/218 (94%)	0.01	1 (0%) 90 85	49, 89, 126, 171	0
1	D	213/218 (97%)	0.02	0 100 100	43, 81, 139, 174	0
1	E	207/218 (94%)	0.01	1 (0%) 90 85	49, 87, 124, 156	0
2	C	132/139 (94%)	-0.09	0 100 100	49, 73, 104, 126	0
2	F	132/139 (94%)	0.04	0 100 100	51, 77, 115, 141	0
All	All	1102/1150 (95%)	0.02	3 (0%) 93 92	43, 84, 135, 174	0

All (3) RSRZ outliers are listed below:

Mol	Chain	Res	Type	RSRZ
1	A	330	SER	2.9
1	E	307	ILE	2.7
1	B	307	ILE	2.3

6.2 Non-standard residues in protein, DNA, RNA chains [i](#)

There are no non-standard protein/DNA/RNA residues in this entry.

6.3 Carbohydrates [i](#)

There are no carbohydrates in this entry.

6.4 Ligands [i](#)

In the following table, the Atoms column lists the number of modelled atoms in the group and the number defined in the chemical component dictionary. LLDF column lists the quality of electron density of the group with respect to its neighbouring residues in protein, DNA or RNA chains.

The B-factors column lists the minimum, median, 95th percentile and maximum values of B factors of atoms in the group. The column labelled 'Q< 0.9' lists the number of atoms with occupancy less than 0.9.

Mol	Type	Chain	Res	Atoms	RSCC	RSR	LLDF	B-factors(Å ²)	Q<0.9
3	ACP	D	401	31/31	0.85	0.21	-0.27	135,142,152,156	0
3	ACP	B	401	31/31	0.97	0.15	-0.76	85,98,111,116	0
3	ACP	A	401	31/31	0.86	0.18	-0.79	127,137,143,145	0
3	ACP	E	401	31/31	0.97	0.16	-0.95	81,100,114,121	0
5	K	C	203	1/1	0.53	0.12	-1.24	123,123,123,123	0
4	MG	B	402	1/1	0.95	0.08	-2.18	85,85,85,85	0
5	K	C	202	1/1	0.90	0.13	-2.23	80,80,80,80	0
4	MG	C	201	1/1	0.95	0.08	-4.66	82,82,82,82	0
4	MG	F	201	1/1	0.98	0.07	-4.67	57,57,57,57	0
4	MG	E	402	1/1	0.97	0.07	-	72,72,72,72	0
4	MG	A	402	1/1	0.77	0.08	-	196,196,196,196	0
4	MG	D	402	1/1	0.92	0.13	-	291,291,291,291	0

6.5 Other polymers [i](#)

There are no such residues in this entry.