



# Full wwPDB X-ray Structure Validation Report ⓘ

Nov 6, 2017 – 03:36 PM EST

PDB ID : 4IV4  
Title : Crystal Structure of the Estrogen Receptor alpha Ligand-binding Domain in Complex with Constrained WAY-derivative, 5b  
Authors : Nwachukwu, J.C.; Srinivasan, S.; Parent, A.A.; Cavett, V.; Nowak, J.; Hughes, T.S.; Kojetin, D.J.; Katzenellenbogen, J.A.; Nettles, K.W.  
Deposited on : unknown  
Resolution : 2.30 Å(reported)

This is a Full wwPDB X-ray Structure Validation Report for a publicly released PDB entry.

We welcome your comments at [validation@mail.wwpdb.org](mailto:validation@mail.wwpdb.org)

A user guide is available at

<http://wwpdb.org/validation/2016/XrayValidationReportHelp>

with specific help available everywhere you see the ⓘ symbol.

---

The following versions of software and data (see [references ⓘ](#)) were used in the production of this report:

MolProbity : 4.02b-467  
Mogul : 1.7.2 (RC1), CSD as538be (2017)  
Xtriage (Phenix) : 1.9-1692  
EDS : rb-20030345  
Percentile statistics : 20161228.v01 (using entries in the PDB archive December 28th 2016)  
Refmac : 5.8.0135  
CCP4 : 6.5.0  
Ideal geometry (proteins) : Engh & Huber (2001)  
Ideal geometry (DNA, RNA) : Parkinson et al. (1996)  
Validation Pipeline (wwPDB-VP) : rb-20030345

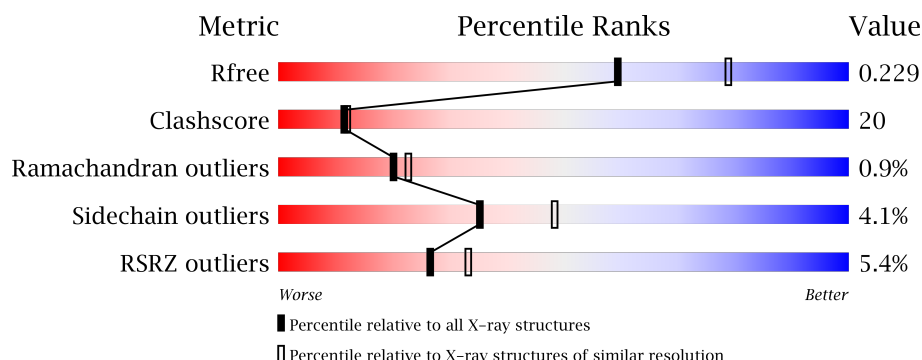
# 1 Overall quality at a glance

The following experimental techniques were used to determine the structure:

## *X-RAY DIFFRACTION*

The reported resolution of this entry is 2.30 Å.

Percentile scores (ranging between 0-100) for global validation metrics of the entry are shown in the following graphic. The table shows the number of entries on which the scores are based.



Metric	Whole archive (#Entries)	Similar resolution (#Entries, resolution range(Å))
$R_{free}$	100719	4130 (2.30-2.30)
Clashscore	112137	4751 (2.30-2.30)
Ramachandran outliers	110173	4705 (2.30-2.30)
Sidechain outliers	110143	4704 (2.30-2.30)
RSRZ outliers	101464	4156 (2.30-2.30)

The table below summarises the geometric issues observed across the polymeric chains and their fit to the electron density. The red, orange, yellow and green segments on the lower bar indicate the fraction of residues that contain outliers for  $\geq 3$ , 2, 1 and 0 types of geometric quality criteria. A grey segment represents the fraction of residues that are not modelled. The numeric value for each fraction is indicated below the corresponding segment, with a dot representing fractions  $\leq 5\%$ . The upper red bar (where present) indicates the fraction of residues that have poor fit to the electron density. The numeric value is given above the bar.

Mol	Chain	Length	Quality of chain
1	A	247	<div> <div>3%</div> <div>64%</div> <div>27%</div> <div>• 7%</div> </div>
1	B	247	<div> <div>7%</div> <div>57%</div> <div>34%</div> <div>• 6%</div> </div>
2	C	10	<div> <div>10%</div> <div>60%</div> <div>40%</div> </div>
2	D	10	<div> <div>50%</div> <div>30%</div> <div>10%</div> <div>10%</div> </div>

## 2 Entry composition

There are 4 unique types of molecules in this entry. The entry contains 3939 atoms, of which 0 are hydrogens and 0 are deuteriums.

In the tables below, the ZeroOcc column contains the number of atoms modelled with zero occupancy, the AltConf column contains the number of residues with at least one atom in alternate conformation and the Trace column contains the number of residues modelled with at most 2 atoms.

- Molecule 1 is a protein called Estrogen receptor.

Mol	Chain	Residues	Atoms					ZeroOcc	AltConf	Trace
1	A	229	Total	C	N	O	S	0	3	0
			1797	1151	311	314	21			
1	B	232	Total	C	N	O	S	0	1	0
			1812	1156	316	321	19			

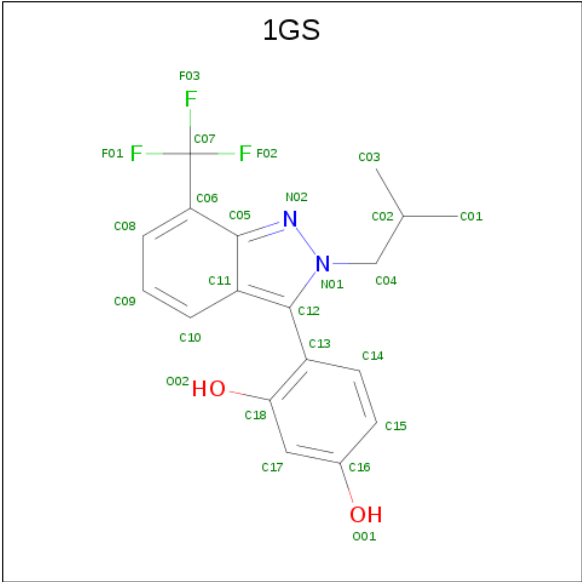
There are 2 discrepancies between the modelled and reference sequences:

Chain	Residue	Modelled	Actual	Comment	Reference
A	537	SER	TYR	ENGINEERED MUTATION	UNP P03372
B	537	SER	TYR	ENGINEERED MUTATION	UNP P03372

- Molecule 2 is a protein called Nuclear receptor coactivator 2.

Mol	Chain	Residues	Atoms				ZeroOcc	AltConf	Trace
2	C	10	Total	C	N	O	0	0	0
			89	57	19	13			
2	D	9	Total	C	N	O	0	0	0
			79	51	16	12			

- Molecule 3 is 4-[2-(2-methylpropyl)-7-(trifluoromethyl)-2H-indazol-3-yl]benzene-1,3-diol (three-letter code: 1GS) (formula: C<sub>18</sub>H<sub>17</sub>F<sub>3</sub>N<sub>2</sub>O<sub>2</sub>).



Mol	Chain	Residues	Atoms					ZeroOcc	AltConf
3	A	1	Total	C	F	N	O	0	0
			25	18	3	2	2		
3	B	1	Total	C	F	N	O	0	0
			25	18	3	2	2		

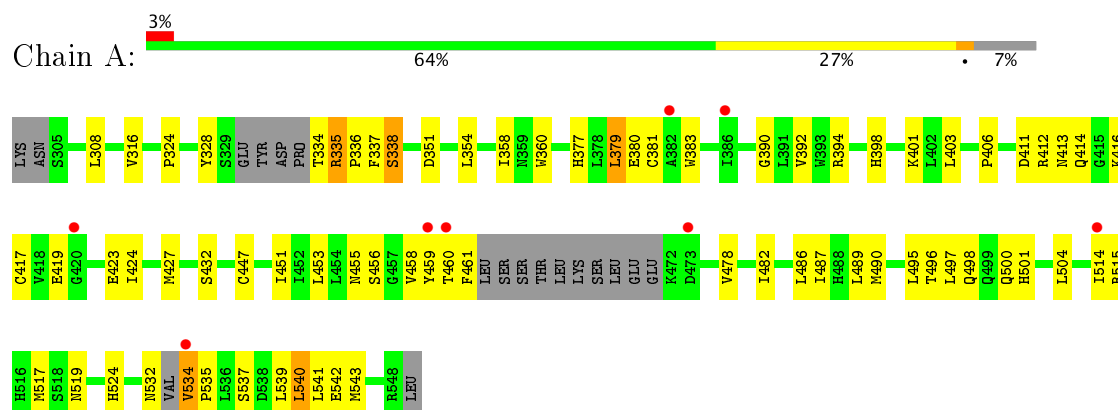
- Molecule 4 is water.

Mol	Chain	Residues	Atoms		ZeroOcc	AltConf
4	A	59	Total	O	0	0
			59	59		
4	B	52	Total	O	0	0
			52	52		
4	C	1	Total	O	0	0
			1	1		

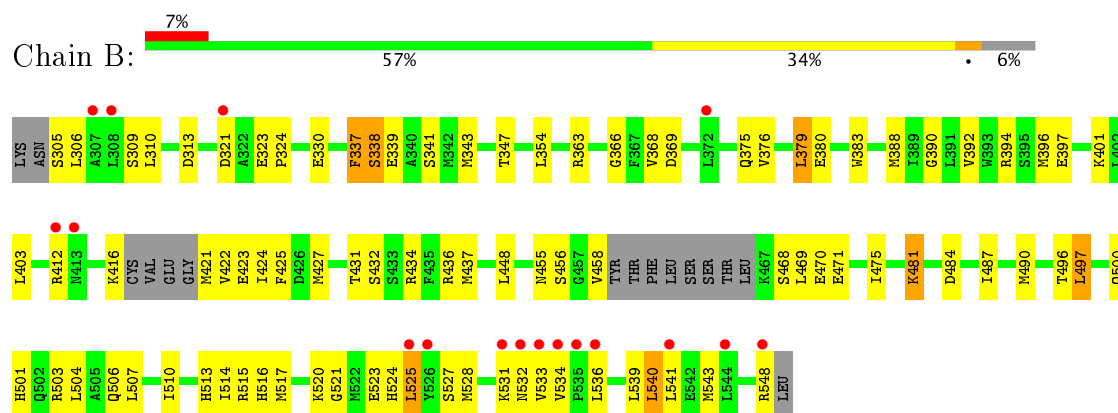
### 3 Residue-property plots [i](#)

These plots are drawn for all protein, RNA and DNA chains in the entry. The first graphic for a chain summarises the proportions of the various outlier classes displayed in the second graphic. The second graphic shows the sequence view annotated by issues in geometry and electron density. Residues are color-coded according to the number of geometric quality criteria for which they contain at least one outlier: green = 0, yellow = 1, orange = 2 and red = 3 or more. A red dot above a residue indicates a poor fit to the electron density ( $RSRZ > 2$ ). Stretches of 2 or more consecutive residues without any outlier are shown as a green connector. Residues present in the sample, but not in the model, are shown in grey.

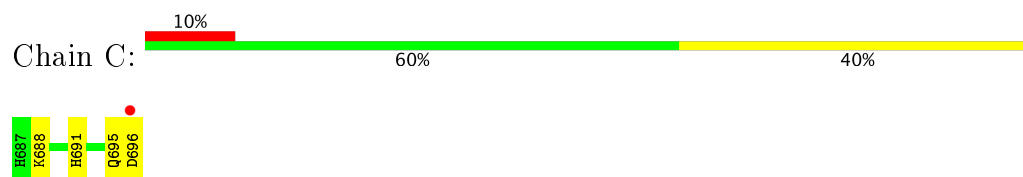
#### • Molecule 1: Estrogen receptor



#### • Molecule 1: Estrogen receptor

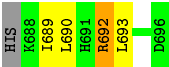


#### • Molecule 2: Nuclear receptor coactivator 2



#### • Molecule 2: Nuclear receptor coactivator 2





## 4 Data and refinement statistics

Property	Value	Source
Space group	P 1 21 1	Depositor
Cell constants a, b, c, $\alpha$ , $\beta$ , $\gamma$	54.36Å 80.51Å 58.19Å 90.00° 109.84° 90.00°	Depositor
Resolution (Å)	39.90 – 2.30 39.90 – 2.29	Depositor EDS
% Data completeness (in resolution range)	92.9 (39.90-2.30) 92.7 (39.90-2.29)	Depositor EDS
$R_{merge}$	(Not available)	Depositor
$R_{sym}$	0.14	Depositor
$\langle I/\sigma(I) \rangle$ <sup>1</sup>	2.61 (at 2.29Å)	Xtriage
Refinement program	PHENIX (phenix.refine: 1.7.1_743)	Depositor
R, $R_{free}$	0.193 , 0.237 0.182 , 0.229	Depositor DCC
$R_{free}$ test set	1855 reflections (9.46%)	DCC
Wilson B-factor (Å <sup>2</sup> )	31.4	Xtriage
Anisotropy	0.279	Xtriage
Bulk solvent $k_{sol}$ (e/Å <sup>3</sup> ), $B_{sol}$ (Å <sup>2</sup> )	0.34 , 54.9	EDS
L-test for twinning <sup>2</sup>	$\langle  L  \rangle = 0.49$ , $\langle L^2 \rangle = 0.33$	Xtriage
Estimated twinning fraction	No twinning to report.	Xtriage
$F_o, F_c$ correlation	0.95	EDS
Total number of atoms	3939	wwPDB-VP
Average B, all atoms (Å <sup>2</sup> )	45.0	wwPDB-VP

Xtriage's analysis on translational NCS is as follows: *The largest off-origin peak in the Patterson function is 8.24% of the height of the origin peak. No significant pseudotranslation is detected.*

<sup>1</sup>Intensities estimated from amplitudes.

<sup>2</sup>Theoretical values of  $\langle |L| \rangle$ ,  $\langle L^2 \rangle$  for acentric reflections are 0.5, 0.333 respectively for untwinned datasets, and 0.375, 0.2 for perfectly twinned datasets.

## 5 Model quality [i](#)

### 5.1 Standard geometry [i](#)

Bond lengths and bond angles in the following residue types are not validated in this section: 1GS

The Z score for a bond length (or angle) is the number of standard deviations the observed value is removed from the expected value. A bond length (or angle) with  $|Z| > 5$  is considered an outlier worth inspection. RMSZ is the root-mean-square of all Z scores of the bond lengths (or angles).

Mol	Chain	Bond lengths		Bond angles	
		RMSZ	$\# Z  > 5$	RMSZ	$\# Z  > 5$
1	A	0.21	0/1833	0.36	0/2476
1	B	0.20	0/1846	0.36	0/2496
2	C	0.19	0/90	0.33	0/119
2	D	0.19	0/79	0.39	0/104
All	All	0.20	0/3848	0.36	0/5195

There are no bond length outliers.

There are no bond angle outliers.

There are no chirality outliers.

There are no planarity outliers.

### 5.2 Too-close contacts [i](#)

In the following table, the Non-H and H(model) columns list the number of non-hydrogen atoms and hydrogen atoms in the chain respectively. The H(added) column lists the number of hydrogen atoms added and optimized by MolProbity. The Clashes column lists the number of clashes within the asymmetric unit, whereas Symm-Clashes lists symmetry related clashes.

Mol	Chain	Non-H	H(model)	H(added)	Clashes	Symm-Clashes
1	A	1797	0	1832	66	0
1	B	1812	0	1837	84	0
2	C	89	0	95	3	0
2	D	79	0	88	7	0
3	A	25	0	16	0	0
3	B	25	0	16	3	0
4	A	59	0	0	5	0
4	B	52	0	0	10	0
4	C	1	0	0	0	0
All	All	3939	0	3884	151	0



The all-atom clashscore is defined as the number of clashes found per 1000 atoms (including hydrogen atoms). The all-atom clashscore for this structure is 20.

All (151) close contacts within the same asymmetric unit are listed below, sorted by their clash magnitude.

Atom-1	Atom-2	Interatomic distance (Å)	Clash overlap (Å)
1:A:335:ARG:HG3	1:A:335:ARG:HH11	1.04	1.17
2:D:692:ARG:HH11	2:D:692:ARG:HG3	1.19	1.01
1:A:459:TYR:HA	1:A:461:PHE:CE2	1.99	0.97
1:A:519:ASN:O	4:A:757:HOH:O	1.85	0.95
2:D:692:ARG:HH11	2:D:692:ARG:CG	1.80	0.94
1:A:413:ASN:HA	1:A:416:LYS:HD3	1.50	0.94
1:A:335:ARG:HG3	1:A:335:ARG:NH1	1.84	0.85
1:B:321:ASP:OD1	1:B:363:ARG:NH1	2.10	0.84
1:A:377:HIS:HE2	1:A:460:THR:HG1	0.84	0.83
2:D:692:ARG:HG3	2:D:692:ARG:NH1	1.91	0.83
1:B:330:GLU:OE1	4:B:720:HOH:O	1.96	0.82
1:B:368:VAL:HA	1:B:375:GLN:NE2	1.99	0.77
1:A:456:SER:HA	1:A:515:ARG:NH2	2.00	0.77
1:B:533:VAL:HG13	1:B:534:VAL:H	1.48	0.76
1:B:532:ASN:O	4:B:749:HOH:O	2.03	0.75
1:A:335:ARG:CG	1:A:335:ARG:HH11	1.91	0.74
1:B:514:ILE:HD13	1:B:517:MET:CE	2.18	0.73
1:A:337:PHE:O	1:A:338:SER:OG	2.07	0.73
1:B:313:ASP:OD2	4:B:728:HOH:O	2.07	0.73
1:B:533:VAL:HG13	1:B:534:VAL:N	2.03	0.73
1:B:337:PHE:O	1:B:338:SER:HB3	1.90	0.71
1:A:496:THR:O	1:A:500:GLN:HG3	1.90	0.71
1:B:468:SER:O	1:B:470:GLU:N	2.25	0.69
1:A:328:TYR:CE1	1:A:406:PRO:HB2	2.29	0.68
1:A:459:TYR:HA	1:A:461:PHE:HE2	1.54	0.67
1:A:537:SER:OG	1:A:540:LEU:HB2	1.95	0.67
1:A:381[B]:CYS:SG	4:B:713:HOH:O	2.19	0.67
1:B:523:GLU:HA	1:B:548:ARG:HH22	1.59	0.66
1:B:533:VAL:HG13	1:B:534:VAL:HG23	1.77	0.66
1:A:424:ILE:HA	1:A:427:MET:CE	2.25	0.66
1:B:437:MET:HA	1:B:437:MET:HE2	1.77	0.66
1:B:330:GLU:N	1:B:330:GLU:OE1	2.29	0.64
1:B:396:MET:O	1:B:436:ARG:HD3	1.98	0.64
1:B:424:ILE:HA	1:B:427:MET:CE	2.28	0.63
1:B:337:PHE:O	1:B:338:SER:CB	2.46	0.62
1:A:424:ILE:HA	1:A:427:MET:HE2	1.81	0.62
1:B:347:THR:HG22	3:B:601:1GS:H6	1.81	0.62

*Continued on next page...*

*Continued from previous page...*

Atom-1	Atom-2	Interatomic distance (Å)	Clash overlap (Å)
1:B:397:GLU:H	1:B:397:GLU:CD	2.02	0.61
1:B:403:LEU:HD23	1:B:403:LEU:O	2.00	0.61
1:A:423:GLU:N	1:A:423:GLU:OE1	2.25	0.61
1:B:455:ASN:O	1:B:458:VAL:HG12	2.02	0.60
1:B:310:LEU:O	1:B:481:LYS:HE3	2.01	0.60
1:A:334:THR:O	1:A:334:THR:HG23	2.02	0.59
1:B:366:GLY:HA2	1:B:369:ASP:OD2	2.02	0.59
1:B:532:ASN:C	4:B:749:HOH:O	2.40	0.59
1:B:390:GLY:O	1:B:394:ARG:HG3	2.03	0.59
1:B:368:VAL:HG22	4:B:738:HOH:O	2.03	0.58
1:B:421:MET:HG3	1:B:425:PHE:CD1	2.38	0.58
1:B:313:ASP:CG	4:B:728:HOH:O	2.41	0.58
1:B:437:MET:HA	1:B:437:MET:CE	2.33	0.58
1:A:459:TYR:HD2	1:B:513:HIS:CG	2.22	0.58
1:B:523:GLU:HA	1:B:548:ARG:NH2	2.19	0.57
1:B:368:VAL:HA	1:B:375:GLN:HE22	1.67	0.57
1:B:506:GLN:O	1:B:510:ILE:HG12	2.05	0.57
2:D:692:ARG:HH11	2:D:692:ARG:CB	2.17	0.57
1:A:381[A]:CYS:SG	4:B:713:HOH:O	2.52	0.56
1:B:338:SER:HB3	1:B:341:SER:OG	2.06	0.55
1:B:424:ILE:HA	1:B:427:MET:HE2	1.87	0.55
2:D:689:ILE:O	2:D:693:LEU:HG	2.07	0.55
1:B:421:MET:HG3	1:B:425:PHE:CE1	2.42	0.54
1:A:514:ILE:HD13	1:A:517:MET:CE	2.37	0.54
1:A:459:TYR:HE2	1:B:510:ILE:HD13	1.71	0.54
1:B:448:LEU:HD21	1:B:507:LEU:HB3	1.89	0.54
1:A:458:VAL:HG13	1:A:459:TYR:CD1	2.43	0.53
1:B:524:HIS:CE1	1:B:528:MET:HE2	2.44	0.53
1:B:532:ASN:CA	4:B:749:HOH:O	2.55	0.53
1:B:514:ILE:HD13	1:B:517:MET:HE1	1.91	0.53
1:B:305:SER:OG	1:B:306:LEU:N	2.38	0.53
1:B:456:SER:HA	1:B:515:ARG:NH2	2.24	0.53
1:A:337:PHE:O	1:A:338:SER:CB	2.57	0.53
1:B:539:LEU:O	1:B:543:MET:HG2	2.10	0.52
1:A:413:ASN:HA	1:A:416:LYS:CD	2.32	0.52
1:A:411:ASP:HB2	4:A:756:HOH:O	2.09	0.52
1:A:539:LEU:O	1:A:543:MET:HG2	2.10	0.52
1:A:459:TYR:CD2	1:B:513:HIS:CD2	2.98	0.52
2:C:691:HIS:O	2:C:695:GLN:HB2	2.11	0.51
1:B:521:GLY:O	1:B:525:LEU:HD23	2.10	0.51
1:A:380:GLU:OE2	2:C:688:LYS:HE3	2.09	0.50

*Continued on next page...*

*Continued from previous page...*

Atom-1	Atom-2	Interatomic distance (Å)	Clash overlap (Å)
1:A:498:GLN:HA	1:A:501:HIS:NE2	2.27	0.50
1:A:412:ARG:O	1:A:416:LYS:HG3	2.11	0.50
1:A:316:VAL:HG21	1:A:489:LEU:HD21	1.94	0.50
1:A:377:HIS:NE2	1:A:460:THR:OG1	2.07	0.50
1:A:392:VAL:HG13	1:A:432:SER:HA	1.94	0.50
1:A:424:ILE:HA	1:A:427:MET:HE3	1.93	0.50
1:A:534:VAL:HG22	1:A:535:PRO:HD2	1.94	0.50
1:B:536:LEU:HB2	1:B:541:LEU:HD21	1.94	0.50
1:A:335:ARG:CG	1:A:335:ARG:NH1	2.56	0.49
1:B:383:TRP:CD1	1:B:543:MET:HE3	2.46	0.49
1:A:390:GLY:O	1:A:394:ARG:HG3	2.12	0.49
1:B:424:ILE:HA	1:B:427:MET:HE3	1.94	0.49
1:A:403:LEU:HD23	1:A:403:LEU:O	2.12	0.49
1:A:413:ASN:ND2	4:A:729:HOH:O	2.45	0.49
1:B:421:MET:CG	1:B:425:PHE:CE1	2.96	0.49
1:B:524:HIS:NE2	1:B:528:MET:CE	2.75	0.49
1:B:388:MET:O	1:B:392:VAL:HG23	2.12	0.49
1:B:471:GLU:O	1:B:475:ILE:HG13	2.13	0.49
1:B:497:LEU:HD12	1:B:501:HIS:NE2	2.28	0.48
1:A:459:TYR:CD2	1:B:513:HIS:CG	3.02	0.48
1:B:533:VAL:CG1	1:B:534:VAL:N	2.74	0.47
1:A:501:HIS:HE1	1:B:484:ASP:OD1	1.96	0.47
1:A:417[A]:CYS:SG	4:A:749:HOH:O	2.60	0.47
1:A:532:ASN:O	1:A:532:ASN:ND2	2.47	0.47
1:A:379:LEU:HA	1:A:379:LEU:HD12	1.77	0.47
1:B:524:HIS:NE2	1:B:528:MET:HE3	2.29	0.47
1:B:532:ASN:HA	4:B:749:HOH:O	2.13	0.47
1:A:542:GLU:OE1	4:A:735:HOH:O	2.20	0.47
1:B:533:VAL:CG1	1:B:534:VAL:H	2.21	0.47
1:B:354:LEU:HD11	1:B:540:LEU:CD1	2.45	0.46
2:D:692:ARG:NH1	2:D:692:ARG:CG	2.52	0.46
1:B:421:MET:SD	3:B:601:1GS:C08	3.03	0.46
1:B:416:LYS:C	1:B:421:MET:N	2.69	0.46
1:B:431:THR:O	1:B:434:ARG:HB3	2.16	0.45
1:A:456:SER:HA	1:A:515:ARG:HH22	1.78	0.45
1:A:336:PRO:HD2	1:A:414:GLN:NE2	2.32	0.45
2:C:695:GLN:O	2:C:696:ASP:C	2.54	0.45
1:B:368:VAL:HA	1:B:375:GLN:HE21	1.78	0.45
1:A:459:TYR:CE2	1:B:510:ILE:CD1	3.00	0.45
1:A:487:ILE:HD11	1:A:504:LEU:HD22	1.99	0.45
1:B:354:LEU:CD1	1:B:540:LEU:CD1	2.95	0.45

*Continued on next page...*

*Continued from previous page...*

Atom-1	Atom-2	Interatomic distance (Å)	Clash overlap (Å)
1:A:459:TYR:CA	1:A:461:PHE:CE2	2.87	0.44
1:B:523:GLU:CA	1:B:548:ARG:HH22	2.29	0.44
1:A:377:HIS:CE1	1:A:460:THR:HG1	2.25	0.44
1:B:516:HIS:O	1:B:520:LYS:HG2	2.17	0.44
1:A:379:LEU:HD13	1:A:453:LEU:HD11	2.00	0.43
1:A:419:GLU:O	1:A:524:HIS:HE1	2.01	0.43
1:B:323:GLU:HA	1:B:324:PRO:HD3	1.86	0.43
1:A:398:HIS:HB3	1:A:401:LYS:HB2	1.99	0.43
1:A:324:PRO:HG3	1:A:360:TRP:HB2	2.01	0.43
1:A:354:LEU:O	1:A:358:ILE:HG13	2.19	0.43
1:A:490:MET:HB3	1:A:495:LEU:HD22	2.00	0.43
1:B:496:THR:O	1:B:500:GLN:HG3	2.19	0.43
1:A:459:TYR:HE2	1:B:510:ILE:CD1	2.32	0.43
1:B:339:GLU:O	1:B:343:MET:HG2	2.18	0.43
1:B:421:MET:SD	3:B:601:IGS:H10	2.59	0.43
1:A:447:CYS:HB2	1:A:486:LEU:HD21	2.01	0.42
1:B:392:VAL:HG13	1:B:432:SER:CA	2.49	0.42
1:B:306:LEU:O	1:B:310:LEU:HG	2.19	0.42
1:B:379:LEU:HA	1:B:379:LEU:HD13	1.80	0.42
1:B:376:VAL:O	1:B:380:GLU:HG3	2.19	0.42
1:B:487:ILE:HD11	1:B:504:LEU:HD22	2.01	0.42
1:A:459:TYR:C	1:A:461:PHE:CD2	2.93	0.42
1:A:383:TRP:CD1	1:A:543:MET:HE3	2.55	0.41
1:A:455:ASN:O	1:A:458:VAL:HG12	2.20	0.41
1:B:379:LEU:HB3	2:D:690:LEU:HD21	2.02	0.41
1:B:422:VAL:HG13	1:B:423:GLU:N	2.36	0.41
1:A:460:THR:O	1:A:461:PHE:C	2.59	0.41
1:A:478:VAL:O	1:A:482:ILE:HG13	2.21	0.41
1:B:527:SER:O	1:B:531:LYS:N	2.40	0.41
1:A:451:ILE:HG13	1:A:482:ILE:HG21	2.02	0.41
1:B:392:VAL:HG13	1:B:432:SER:HA	2.03	0.40
1:B:490:MET:CE	1:B:503:ARG:HG2	2.51	0.40

There are no symmetry-related clashes.

## 5.3 Torsion angles

### 5.3.1 Protein backbone

In the following table, the Percentiles column shows the percent Ramachandran outliers of the chain as a percentile score with respect to all X-ray entries followed by that with respect to entries

of similar resolution.

The Analysed column shows the number of residues for which the backbone conformation was analysed, and the total number of residues.

Mol	Chain	Analysed	Favoured	Allowed	Outliers	Percentiles	
1	A	224/247 (91%)	220 (98%)	3 (1%)	1 (0%)	38	47
1	B	227/247 (92%)	219 (96%)	5 (2%)	3 (1%)	14	14
2	C	8/10 (80%)	8 (100%)	0	0	100	100
2	D	7/10 (70%)	7 (100%)	0	0	100	100
All	All	466/514 (91%)	454 (97%)	8 (2%)	4 (1%)	20	23

All (4) Ramachandran outliers are listed below:

Mol	Chain	Res	Type
1	B	337	PHE
1	B	469	LEU
1	B	338	SER
1	A	338	SER

### 5.3.2 Protein sidechains ⓘ

In the following table, the Percentiles column shows the percent sidechain outliers of the chain as a percentile score with respect to all X-ray entries followed by that with respect to entries of similar resolution.

The Analysed column shows the number of residues for which the sidechain conformation was analysed, and the total number of residues.

Mol	Chain	Analysed	Rotameric	Outliers	Percentiles	
1	A	199/223 (89%)	191 (96%)	8 (4%)	36	50
1	B	199/223 (89%)	191 (96%)	8 (4%)	36	50
2	C	10/10 (100%)	10 (100%)	0	100	100
2	D	9/10 (90%)	8 (89%)	1 (11%)	7	8
All	All	417/466 (90%)	400 (96%)	17 (4%)	35	48

All (17) residues with a non-rotameric sidechain are listed below:

Mol	Chain	Res	Type
1	A	308	LEU
1	A	335	ARG

*Continued on next page...*

*Continued from previous page...*

Mol	Chain	Res	Type
1	A	351	ASP
1	A	379	LEU
1	A	497	LEU
1	A	534	VAL
1	A	540	LEU
1	A	541	LEU
1	B	309	SER
1	B	379	LEU
1	B	401	LYS
1	B	412	ARG
1	B	481	LYS
1	B	497	LEU
1	B	525	LEU
1	B	540	LEU
2	D	692	ARG

Some sidechains can be flipped to improve hydrogen bonding and reduce clashes. All (2) such sidechains are listed below:

Mol	Chain	Res	Type
1	A	524	HIS
1	B	476	HIS

### 5.3.3 RNA [i](#)

There are no RNA molecules in this entry.

## 5.4 Non-standard residues in protein, DNA, RNA chains [i](#)

There are no non-standard protein/DNA/RNA residues in this entry.

## 5.5 Carbohydrates [i](#)

There are no carbohydrates in this entry.

## 5.6 Ligand geometry [i](#)

2 ligands are modelled in this entry.

In the following table, the Counts columns list the number of bonds (or angles) for which Mogul statistics could be retrieved, the number of bonds (or angles) that are observed in the model and the number of bonds (or angles) that are defined in the Chemical Component Dictionary. The Link column lists molecule types, if any, to which the group is linked. The Z score for a bond length (or angle) is the number of standard deviations the observed value is removed from the expected value. A bond length (or angle) with  $|Z| > 2$  is considered an outlier worth inspection. RMSZ is the root-mean-square of all Z scores of the bond lengths (or angles).

Mol	Type	Chain	Res	Link	Bond lengths			Bond angles		
					Counts	RMSZ	# Z  > 2	Counts	RMSZ	# Z  > 2
3	1GS	A	601	-	23,27,27	5.79	7 (30%)	31,41,41	1.62	6 (19%)
3	1GS	B	601	-	23,27,27	5.77	7 (30%)	31,41,41	1.68	6 (19%)

In the following table, the Chirals column lists the number of chiral outliers, the number of chiral centers analysed, the number of these observed in the model and the number defined in the Chemical Component Dictionary. Similar counts are reported in the Torsion and Rings columns. '-' means no outliers of that kind were identified.

Mol	Type	Chain	Res	Link	Chirals	Torsions	Rings
3	1GS	A	601	-	-	0/11/14/14	0/3/3/3
3	1GS	B	601	-	-	0/11/14/14	0/3/3/3

All (14) bond length outliers are listed below:

Mol	Chain	Res	Type	Atoms	Z	Observed(Å)	Ideal(Å)
3	A	601	1GS	N02-N01	-21.91	1.15	1.37
3	B	601	1GS	N02-N01	-21.69	1.15	1.37
3	B	601	1GS	C13-C12	-10.09	1.35	1.48
3	A	601	1GS	C13-C12	-9.99	1.35	1.48
3	A	601	1GS	C07-C06	-7.22	1.43	1.50
3	B	601	1GS	C07-C06	-7.16	1.43	1.50
3	A	601	1GS	C06-C05	-7.16	1.37	1.43
3	B	601	1GS	C06-C05	-7.05	1.37	1.43
3	B	601	1GS	C12-C11	-6.55	1.34	1.43
3	A	601	1GS	C12-C11	-6.22	1.34	1.43
3	B	601	1GS	C10-C11	-3.28	1.35	1.42
3	A	601	1GS	C10-C11	-3.20	1.35	1.42
3	A	601	1GS	C08-C06	4.38	1.42	1.37
3	B	601	1GS	C08-C06	4.55	1.42	1.37

All (12) bond angle outliers are listed below:

Mol	Chain	Res	Type	Atoms	Z	Observed(°)	Ideal(°)
3	B	601	1GS	C12-N01-N02	-4.62	108.55	112.56

*Continued on next page...*

*Continued from previous page...*

Mol	Chain	Res	Type	Atoms	Z	Observed(°)	Ideal(°)
3	A	601	1GS	C08-C06-C05	-4.43	117.50	120.29
3	B	601	1GS	C08-C06-C05	-4.41	117.51	120.29
3	A	601	1GS	C12-N01-N02	-4.28	108.84	112.56
3	B	601	1GS	F01-C07-C06	-2.15	110.26	112.32
3	A	601	1GS	F03-C07-C06	-2.05	110.36	112.32
3	A	601	1GS	C13-C12-N01	2.17	126.37	123.44
3	A	601	1GS	C07-C06-C05	2.40	120.89	119.49
3	B	601	1GS	F02-C07-C06	2.73	114.94	112.32
3	B	601	1GS	C13-C12-N01	2.80	127.22	123.44
3	B	601	1GS	C07-C06-C05	3.04	121.25	119.49
3	A	601	1GS	F02-C07-C06	3.16	115.34	112.32

There are no chirality outliers.

There are no torsion outliers.

There are no ring outliers.

1 monomer is involved in 3 short contacts:

Mol	Chain	Res	Type	Clashes	Symm-Clashes
3	B	601	1GS	3	0

## 5.7 Other polymers [i](#)

There are no such residues in this entry.

## 5.8 Polymer linkage issues [i](#)

There are no chain breaks in this entry.



## 6 Fit of model and data

### 6.1 Protein, DNA and RNA chains

In the following table, the column labelled ‘#RSRZ> 2’ contains the number (and percentage) of RSRZ outliers, followed by percent RSRZ outliers for the chain as percentile scores relative to all X-ray entries and entries of similar resolution. The OWAB column contains the minimum, median, 95<sup>th</sup> percentile and maximum values of the occupancy-weighted average B-factor per residue. The column labelled ‘Q< 0.9’ lists the number of (and percentage) of residues with an average occupancy less than 0.9.

Mol	Chain	Analysed	<RSRZ>	#RSRZ>2	OWAB(Å <sup>2</sup> )	Q<0.9
1	A	229/247 (92%)	0.11	8 (3%) 44 51	23, 39, 68, 103	0
1	B	232/247 (93%)	0.28	17 (7%) 16 21	25, 44, 83, 102	0
2	C	10/10 (100%)	0.33	1 (10%) 8 11	37, 49, 87, 95	0
2	D	9/10 (90%)	0.50	0 100 100	45, 63, 75, 86	0
All	All	480/514 (93%)	0.21	26 (5%) 26 33	23, 43, 82, 103	0

All (26) RSRZ outliers are listed below:

Mol	Chain	Res	Type	RSRZ
1	B	533	VAL	4.2
1	B	525	LEU	4.0
1	B	372	LEU	3.4
1	B	308	LEU	3.2
1	B	544	LEU	3.1
1	B	536	LEU	3.1
1	B	535	PRO	2.9
1	B	531	LYS	2.8
1	B	412	ARG	2.8
1	B	532	ASN	2.8
2	C	696	ASP	2.8
1	A	382	ALA	2.6
1	A	420	GLY	2.6
1	A	459	TYR	2.6
1	B	541	LEU	2.5
1	B	307	ALA	2.5
1	B	526	TYR	2.4
1	B	534	VAL	2.4
1	A	514	ILE	2.3
1	A	473	ASP	2.3
1	B	413	ASN	2.3

*Continued on next page...*

*Continued from previous page...*

Mol	Chain	Res	Type	RSRZ
1	A	460	THR	2.2
1	A	534	VAL	2.1
1	B	321	ASP	2.1
1	A	386	ILE	2.0
1	B	548	ARG	2.0

## 6.2 Non-standard residues in protein, DNA, RNA chains [i](#)

There are no non-standard protein/DNA/RNA residues in this entry.

## 6.3 Carbohydrates [i](#)

There are no carbohydrates in this entry.

## 6.4 Ligands [i](#)

In the following table, the Atoms column lists the number of modelled atoms in the group and the number defined in the chemical component dictionary. LLDF column lists the quality of electron density of the group with respect to its neighbouring residues in protein, DNA or RNA chains. The B-factors column lists the minimum, median, 95<sup>th</sup> percentile and maximum values of B factors of atoms in the group. The column labelled 'Q < 0.9' lists the number of atoms with occupancy less than 0.9.

Mol	Type	Chain	Res	Atoms	RSCC	RSR	LLDF	B-factors(Å <sup>2</sup> )	Q<0.9
3	1GS	B	601	25/25	0.91	0.18	0.51	35,41,51,53	0
3	1GS	A	601	25/25	0.97	0.10	-1.19	19,29,37,40	0

## 6.5 Other polymers [i](#)

There are no such residues in this entry.