



# Full wwPDB X-ray Structure Validation Report ⓘ

Nov 6, 2017 – 04:24 AM EST

PDB ID : 4IVR  
Title : Crystal structure of thymidine kinase from herpes simplex virus type 1 in complex with IN52/10  
Authors : Pernot, L.; Novakovic, I.; Westermaier, Y.; Perozzo, R.; Raic-Malic, S.; Scapozza, L.  
Deposited on : unknown  
Resolution : 2.40 Å(reported)

This is a Full wwPDB X-ray Structure Validation Report for a publicly released PDB entry.

We welcome your comments at [validation@mail.wwpdb.org](mailto:validation@mail.wwpdb.org)

A user guide is available at

<http://wwpdb.org/validation/2016/XrayValidationReportHelp>

with specific help available everywhere you see the ⓘ symbol.

---

The following versions of software and data (see [references ⓘ](#)) were used in the production of this report:

MolProbity : 4.02b-467  
Mogul : 1.7.2 (RC1), CSD as538be (2017)  
Xtriage (Phenix) : 1.9-1692  
EDS : rb-20030345  
Percentile statistics : 20161228.v01 (using entries in the PDB archive December 28th 2016)  
Refmac : 5.8.0135  
CCP4 : 6.5.0  
Ideal geometry (proteins) : Engh & Huber (2001)  
Ideal geometry (DNA, RNA) : Parkinson et al. (1996)  
Validation Pipeline (wwPDB-VP) : rb-20030345

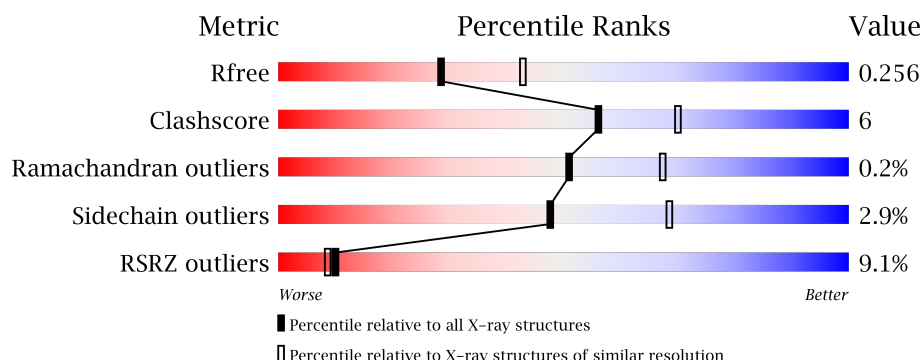
# 1 Overall quality at a glance

The following experimental techniques were used to determine the structure:

## *X-RAY DIFFRACTION*

The reported resolution of this entry is 2.40 Å.

Percentile scores (ranging between 0-100) for global validation metrics of the entry are shown in the following graphic. The table shows the number of entries on which the scores are based.



Metric	Whole archive (#Entries)	Similar resolution (#Entries, resolution range(Å))
$R_{free}$	100719	3166 (2.40-2.40)
Clashscore	112137	3674 (2.40-2.40)
Ramachandran outliers	110173	3616 (2.40-2.40)
Sidechain outliers	110143	3617 (2.40-2.40)
RSRZ outliers	101464	3195 (2.40-2.40)

The table below summarises the geometric issues observed across the polymeric chains and their fit to the electron density. The red, orange, yellow and green segments on the lower bar indicate the fraction of residues that contain outliers for  $\geq 3$ , 2, 1 and 0 types of geometric quality criteria. A grey segment represents the fraction of residues that are not modelled. The numeric value for each fraction is indicated below the corresponding segment, with a dot representing fractions  $\leq 5\%$ . The upper red bar (where present) indicates the fraction of residues that have poor fit to the electron density. The numeric value is given above the bar.

Mol	Chain	Length	Quality of chain
1	A	331	<div> <div>10%</div> <div> <div></div> <div>80%</div> <div>13%</div> <div>7%</div> </div> </div>
1	B	331	<div> <div>7%</div> <div> <div></div> <div>80%</div> <div>12%</div> <div>7%</div> </div> </div>

## 2 Entry composition [i](#)

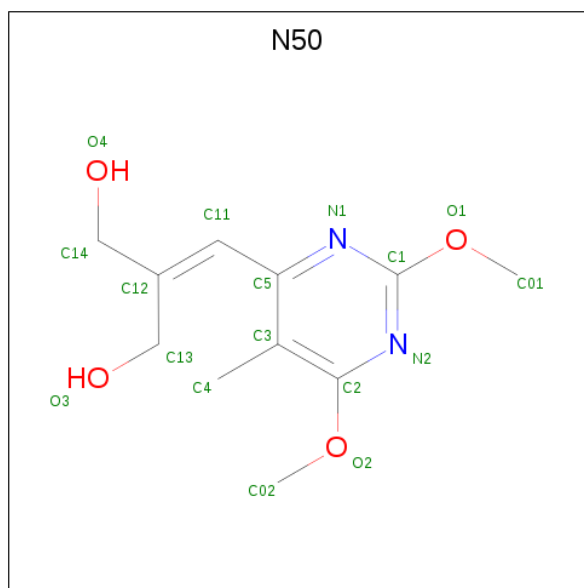
There are 4 unique types of molecules in this entry. The entry contains 4893 atoms, of which 0 are hydrogens and 0 are deuteriums.

In the tables below, the ZeroOcc column contains the number of atoms modelled with zero occupancy, the AltConf column contains the number of residues with at least one atom in alternate conformation and the Trace column contains the number of residues modelled with at most 2 atoms.

- Molecule 1 is a protein called Thymidine kinase.

Mol	Chain	Residues	Atoms					ZeroOcc	AltConf	Trace
1	A	309	Total	C	N	O	S	0	4	0
			2345	1499	401	426	19			
1	B	307	Total	C	N	O	S	0	10	0
			2391	1529	414	427	21			

- Molecule 2 is 2-[(2,6-dimethoxy-5-methylpyrimidin-4-yl)methylidene]propane-1,3-diol (three-letter code: N50) (formula: C<sub>11</sub>H<sub>16</sub>N<sub>2</sub>O<sub>4</sub>).



Mol	Chain	Residues	Atoms				ZeroOcc	AltConf
2	A	1	Total	C	N	O	0	0
			17	11	2	4		
2	B	1	Total	C	N	O	0	0
			17	11	2	4		

- Molecule 3 is SULFATE ION (three-letter code: SO4) (formula: O<sub>4</sub>S).



Mol	Chain	Residues	Atoms			ZeroOcc	AltConf
3	A	1	Total	O	S	0	0
			5	4	1		
3	B	1	Total	O	S	0	0
			5	4	1		

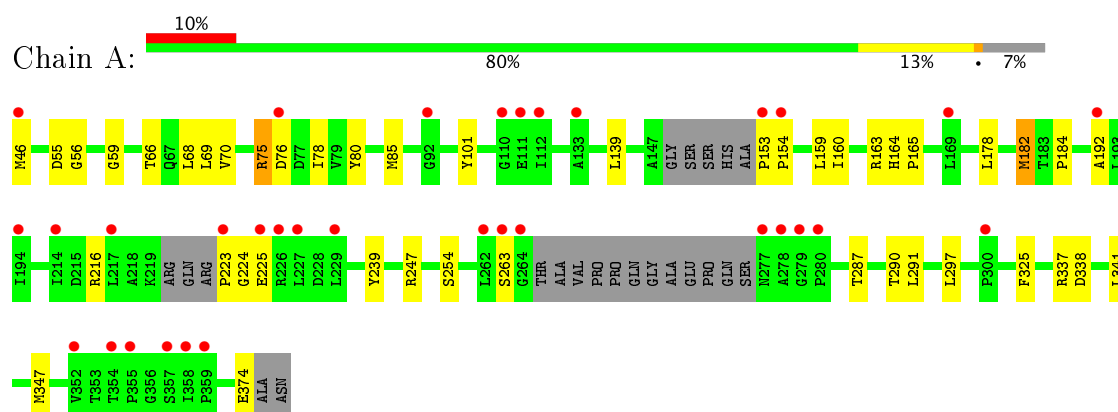
- Molecule 4 is water.

Mol	Chain	Residues	Atoms		ZeroOcc	AltConf
4	A	44	Total	O	0	0
			44	44		
4	B	69	Total	O	0	0
			69	69		

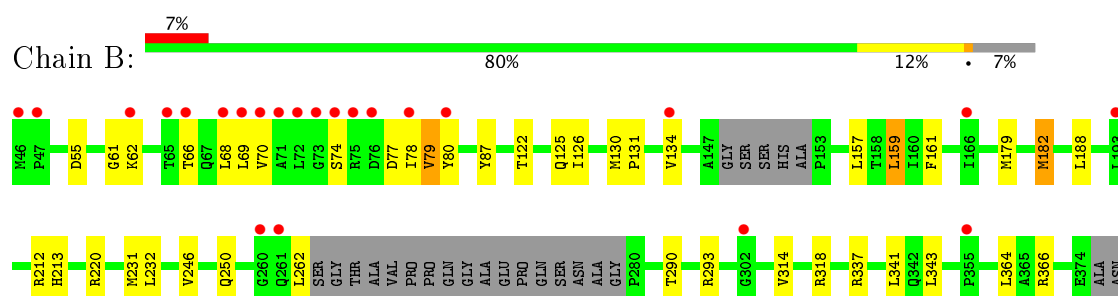
### 3 Residue-property plots [i](#)

These plots are drawn for all protein, RNA and DNA chains in the entry. The first graphic for a chain summarises the proportions of the various outlier classes displayed in the second graphic. The second graphic shows the sequence view annotated by issues in geometry and electron density. Residues are color-coded according to the number of geometric quality criteria for which they contain at least one outlier: green = 0, yellow = 1, orange = 2 and red = 3 or more. A red dot above a residue indicates a poor fit to the electron density ( $RSRZ > 2$ ). Stretches of 2 or more consecutive residues without any outlier are shown as a green connector. Residues present in the sample, but not in the model, are shown in grey.

#### • Molecule 1: Thymidine kinase



#### • Molecule 1: Thymidine kinase



## 4 Data and refinement statistics

Property	Value	Source
Space group	C 2 2 21	Depositor
Cell constants a, b, c, $\alpha$ , $\beta$ , $\gamma$	113.04Å 115.13Å 108.08Å 90.00° 90.00° 90.00°	Depositor
Resolution (Å)	40.33 – 2.40 40.33 – 2.40	Depositor EDS
% Data completeness (in resolution range)	98.0 (40.33-2.40) 98.0 (40.33-2.40)	Depositor EDS
$R_{merge}$	0.13	Depositor
$R_{sym}$	0.12	Depositor
$\langle I/\sigma(I) \rangle$ <sup>1</sup>	5.79 (at 2.39Å)	Xtriage
Refinement program	PHENIX (phenix.refine: 1.8.1_1168)	Depositor
R, $R_{free}$	0.196 , 0.257 0.196 , 0.256	Depositor DCC
$R_{free}$ test set	1366 reflections (5.00%)	DCC
Wilson B-factor (Å <sup>2</sup> )	37.5	Xtriage
Anisotropy	0.842	Xtriage
Bulk solvent $k_{sol}$ (e/Å <sup>3</sup> ), $B_{sol}$ (Å <sup>2</sup> )	0.34 , 47.2	EDS
L-test for twinning <sup>2</sup>	$\langle  L  \rangle = 0.50$ , $\langle L^2 \rangle = 0.33$	Xtriage
Estimated twinning fraction	0.022 for -k,-h,-l	Xtriage
$F_o, F_c$ correlation	0.94	EDS
Total number of atoms	4893	wwPDB-VP
Average B, all atoms (Å <sup>2</sup> )	41.0	wwPDB-VP

Xtriage's analysis on translational NCS is as follows: *The largest off-origin peak in the Patterson function is 5.19% of the height of the origin peak. No significant pseudotranslation is detected.*

<sup>1</sup>Intensities estimated from amplitudes.

<sup>2</sup>Theoretical values of  $\langle |L| \rangle$ ,  $\langle L^2 \rangle$  for acentric reflections are 0.5, 0.333 respectively for untwinned datasets, and 0.375, 0.2 for perfectly twinned datasets.

## 5 Model quality

### 5.1 Standard geometry

Bond lengths and bond angles in the following residue types are not validated in this section: SO4, N50

The Z score for a bond length (or angle) is the number of standard deviations the observed value is removed from the expected value. A bond length (or angle) with  $|Z| > 5$  is considered an outlier worth inspection. RMSZ is the root-mean-square of all Z scores of the bond lengths (or angles).

Mol	Chain	Bond lengths		Bond angles	
		RMSZ	# Z  >5	RMSZ	# Z  >5
1	A	0.36	0/2414	0.54	0/3297
1	B	0.37	0/2474	0.56	0/3373
All	All	0.36	0/4888	0.55	0/6670

There are no bond length outliers.

There are no bond angle outliers.

There are no chirality outliers.

There are no planarity outliers.

### 5.2 Too-close contacts

In the following table, the Non-H and H(model) columns list the number of non-hydrogen atoms and hydrogen atoms in the chain respectively. The H(added) column lists the number of hydrogen atoms added and optimized by MolProbity. The Clashes column lists the number of clashes within the asymmetric unit, whereas Symm-Clashes lists symmetry related clashes.

Mol	Chain	Non-H	H(model)	H(added)	Clashes	Symm-Clashes
1	A	2345	0	2345	26	0
1	B	2391	0	2419	30	0
2	A	17	0	16	1	0
2	B	17	0	16	1	0
3	A	5	0	0	0	0
3	B	5	0	0	1	0
4	A	44	0	0	1	0
4	B	69	0	0	2	0
All	All	4893	0	4796	56	0

The all-atom clashscore is defined as the number of clashes found per 1000 atoms (including hydrogen atoms). The all-atom clashscore for this structure is 6.

All (56) close contacts within the same asymmetric unit are listed below, sorted by their clash magnitude.

Atom-1	Atom-2	Interatomic distance (Å)	Clash overlap (Å)
1:A:78:ILE:HD11	1:A:160:ILE:HD11	1.61	0.81
1:B:125:GLN:HE21	2:B:401:N50:H6	1.51	0.75
1:B:69:LEU:HD11	1:B:341:LEU:HD13	1.68	0.74
1:B:220:ARG:NH2	3:B:402:SO4:O4	2.27	0.68
1:B:262:LEU:HD13	1:B:293[A]:ARG:HD2	1.76	0.67
1:B:79:VAL:HG23	1:B:157:LEU:HD11	1.80	0.62
1:A:184:PRO:HB2	1:A:297:LEU:HD11	1.84	0.60
1:A:70:VAL:HG21	1:A:80:TYR:HB2	1.85	0.59
1:A:163:ARG:HE	2:A:501:N50:H14	1.69	0.57
1:A:66:THR:HG21	1:A:80:TYR:CE1	2.41	0.56
1:B:66:THR:HG21	1:B:80:TYR:CE1	2.41	0.56
1:A:85:MET:HB2	1:A:374:GLU:HG2	1.89	0.55
1:B:68:LEU:HB3	1:B:337:ARG:HD3	1.90	0.53
1:A:59:GLY:O	1:A:216:ARG:HD3	2.08	0.53
1:B:290:THR:O	1:B:293[A]:ARG:HD3	2.09	0.52
1:B:70:VAL:HB	4:B:544:HOH:O	2.08	0.52
1:A:69:LEU:HD13	1:A:341[B]:LEU:HG	1.91	0.52
1:B:74:SER:HB3	1:B:77:ASP:HB3	1.93	0.51
1:A:164:HIS:CG	1:A:165:PRO:HD2	2.48	0.49
1:B:55:ASP:O	1:B:62:LYS:HD2	2.12	0.48
1:B:213:HIS:CE1	1:B:232:LEU:HD11	2.49	0.48
1:B:179[B]:MET:HG3	1:B:231[B]:MET:SD	2.54	0.48
1:A:101:TYR:CZ	1:A:225:GLU:HG3	2.49	0.47
1:A:56:GLY:HA2	1:A:239:TYR:CD1	2.50	0.47
1:B:61:GLY:N	1:B:220:ARG:HH21	2.12	0.47
1:B:87:TYR:OH	1:B:130[B]:MET:HG2	2.15	0.47
1:A:247:ARG:HD2	1:A:247:ARG:HA	1.62	0.46
1:A:338:ASP:HA	1:A:341[B]:LEU:HD12	1.97	0.46
1:A:325:PHE:CE1	1:A:347:MET:HG2	2.50	0.46
1:A:153:PRO:HA	1:A:154:PRO:HD3	1.80	0.46
1:A:287:THR:O	1:A:290:THR:HG22	2.15	0.46
1:B:61:GLY:H	1:B:220:ARG:HH21	1.64	0.46
1:A:75:ARG:CD	1:A:75:ARG:H	2.26	0.45
1:A:75:ARG:HD2	1:A:75:ARG:H	1.81	0.45
1:B:246:VAL:O	1:B:250:GLN:HG3	2.16	0.45
1:A:55:ASP:OD1	1:A:56:GLY:N	2.42	0.44
1:A:182[A]:MET:HE3	1:A:182[A]:MET:HB2	1.93	0.44
1:A:223:PRO:HB2	1:A:224:GLY:H	1.68	0.44
1:B:61:GLY:HA2	4:B:539:HOH:O	2.17	0.43
1:B:188:LEU:HA	1:B:188:LEU:HD23	1.83	0.43

*Continued on next page...*



Continued from previous page...

Atom-1	Atom-2	Interatomic distance (Å)	Clash overlap (Å)
1:B:74:SER:HB3	1:B:77:ASP:CB	2.48	0.43
1:A:68:LEU:HB3	1:A:337:ARG:HD3	2.01	0.43
1:B:159:LEU:HD13	1:B:161:PHE:CZ	2.54	0.42
1:B:66:THR:O	1:B:70:VAL:HG23	2.19	0.42
1:B:126:ILE:HA	1:B:126:ILE:HD13	1.94	0.42
1:B:131:PRO:HA	1:B:134[A]:VAL:HG22	2.01	0.42
1:A:178:LEU:HD21	1:A:291:LEU:HD22	2.01	0.41
1:B:314:VAL:O	1:B:318:ARG:HG2	2.20	0.41
1:A:192:ALA:HB2	1:B:134[A]:VAL:HG12	2.02	0.41
1:B:182[A]:MET:HE3	1:B:182[A]:MET:HB2	1.86	0.41
1:A:164:HIS:CD2	1:A:165:PRO:HD2	2.56	0.40
1:B:122:THR:N	1:B:182[A]:MET:HE1	2.36	0.40
1:A:101:TYR:CE2	1:A:225:GLU:HG3	2.56	0.40

There are no symmetry-related clashes.

## 5.3 Torsion angles [i](#)

### 5.3.1 Protein backbone [i](#)

In the following table, the Percentiles column shows the percent Ramachandran outliers of the chain as a percentile score with respect to all X-ray entries followed by that with respect to entries of similar resolution.

The Analysed column shows the number of residues for which the backbone conformation was analysed, and the total number of residues.

Mol	Chain	Analysed	Favoured	Allowed	Outliers	Percentiles	
1	A	305/331 (92%)	288 (94%)	16 (5%)	1 (0%)	44	60
1	B	311/331 (94%)	300 (96%)	11 (4%)	0	100	100
All	All	616/662 (93%)	588 (96%)	27 (4%)	1 (0%)	51	67

All (1) Ramachandran outliers are listed below:

Mol	Chain	Res	Type
1	A	263	SER

### 5.3.2 Protein sidechains ⓘ

In the following table, the Percentiles column shows the percent sidechain outliers of the chain as a percentile score with respect to all X-ray entries followed by that with respect to entries of similar resolution.

The Analysed column shows the number of residues for which the sidechain conformation was analysed, and the total number of residues.

Mol	Chain	Analysed	Rotameric	Outliers	Percentiles	
1	A	247/264 (94%)	239 (97%)	8 (3%)	44	65
1	B	255/264 (97%)	247 (97%)	8 (3%)	45	66
All	All	502/528 (95%)	486 (97%)	16 (3%)	48	65

All (16) residues with a non-rotameric sidechain are listed below:

Mol	Chain	Res	Type
1	A	46	MET
1	A	75	ARG
1	A	76	ASP
1	A	139	LEU
1	A	159	LEU
1	A	182[A]	MET
1	A	182[B]	MET
1	A	254	SER
1	B	78	ILE
1	B	79	VAL
1	B	159	LEU
1	B	182[A]	MET
1	B	182[B]	MET
1	B	212	ARG
1	B	343	LEU
1	B	364	LEU

Some sidechains can be flipped to improve hydrogen bonding and reduce clashes. All (1) such sidechains are listed below:

Mol	Chain	Res	Type
1	B	125	GLN

### 5.3.3 RNA ⓘ

There are no RNA molecules in this entry.

## 5.4 Non-standard residues in protein, DNA, RNA chains ⓘ

There are no non-standard protein/DNA/RNA residues in this entry.

## 5.5 Carbohydrates ⓘ

There are no carbohydrates in this entry.

## 5.6 Ligand geometry ⓘ

4 ligands are modelled in this entry.

In the following table, the Counts columns list the number of bonds (or angles) for which Mogul statistics could be retrieved, the number of bonds (or angles) that are observed in the model and the number of bonds (or angles) that are defined in the Chemical Component Dictionary. The Link column lists molecule types, if any, to which the group is linked. The Z score for a bond length (or angle) is the number of standard deviations the observed value is removed from the expected value. A bond length (or angle) with  $|Z| > 2$  is considered an outlier worth inspection. RMSZ is the root-mean-square of all Z scores of the bond lengths (or angles).

Mol	Type	Chain	Res	Link	Bond lengths			Bond angles		
					Counts	RMSZ	$\# Z  > 2$	Counts	RMSZ	$\# Z  > 2$
2	N50	A	501	-	16,17,17	1.64	4 (25%)	16,22,22	1.74	4 (25%)
3	SO4	A	502	-	4,4,4	0.12	0	6,6,6	0.16	0
2	N50	B	401	-	16,17,17	1.78	4 (25%)	16,22,22	1.78	5 (31%)
3	SO4	B	402	-	4,4,4	0.20	0	6,6,6	0.07	0

In the following table, the Chirals column lists the number of chiral outliers, the number of chiral centers analysed, the number of these observed in the model and the number defined in the Chemical Component Dictionary. Similar counts are reported in the Torsion and Rings columns. '-' means no outliers of that kind were identified.

Mol	Type	Chain	Res	Link	Chirals	Torsions	Rings
2	N50	A	501	-	-	0/12/12/12	0/1/1/1
3	SO4	A	502	-	-	0/0/0/0	0/0/0/0
2	N50	B	401	-	-	0/12/12/12	0/1/1/1
3	SO4	B	402	-	-	0/0/0/0	0/0/0/0

All (8) bond length outliers are listed below:

Mol	Chain	Res	Type	Atoms	Z	Observed(Å)	Ideal(Å)
2	B	401	N50	O1-C1	2.03	1.38	1.33
2	A	501	N50	O1-C1	2.25	1.39	1.33

*Continued on next page...*

*Continued from previous page...*

Mol	Chain	Res	Type	Atoms	Z	Observed(Å)	Ideal(Å)
2	A	501	N50	C1-N1	2.27	1.36	1.33
2	B	401	N50	C1-N1	2.66	1.37	1.33
2	A	501	N50	C1-N2	2.95	1.37	1.33
2	A	501	N50	C2-N2	3.32	1.37	1.32
2	B	401	N50	C1-N2	3.47	1.38	1.33
2	B	401	N50	C2-N2	4.04	1.38	1.32

All (9) bond angle outliers are listed below:

Mol	Chain	Res	Type	Atoms	Z	Observed(°)	Ideal(°)
2	A	501	N50	C01-O1-C1	-4.21	110.35	117.56
2	B	401	N50	C01-O1-C1	-3.59	111.41	117.56
2	A	501	N50	O3-C13-C12	-3.43	104.85	111.89
2	B	401	N50	O3-C13-C12	-3.05	105.61	111.89
2	B	401	N50	C1-N2-C2	-2.55	112.93	115.16
2	B	401	N50	O4-C14-C12	-2.26	107.25	111.89
2	A	501	N50	C1-N2-C2	-2.24	113.20	115.16
2	A	501	N50	C4-C3-C5	2.66	123.32	120.35
2	B	401	N50	C02-O2-C2	3.63	120.94	117.30

There are no chirality outliers.

There are no torsion outliers.

There are no ring outliers.

3 monomers are involved in 3 short contacts:

Mol	Chain	Res	Type	Clashes	Symm-Clashes
2	A	501	N50	1	0
2	B	401	N50	1	0
3	B	402	SO4	1	0

## 5.7 Other polymers [i](#)

There are no such residues in this entry.

## 5.8 Polymer linkage issues [i](#)

There are no chain breaks in this entry.

## 6 Fit of model and data

### 6.1 Protein, DNA and RNA chains

In the following table, the column labelled ‘#RSRZ> 2’ contains the number (and percentage) of RSRZ outliers, followed by percent RSRZ outliers for the chain as percentile scores relative to all X-ray entries and entries of similar resolution. The OWAB column contains the minimum, median, 95<sup>th</sup> percentile and maximum values of the occupancy-weighted average B-factor per residue. The column labelled ‘Q< 0.9’ lists the number of (and percentage) of residues with an average occupancy less than 0.9.

Mol	Chain	Analysed	<RSRZ>	#RSRZ>2	OWAB(Å <sup>2</sup> )	Q<0.9
1	A	309/331 (93%)	0.62	33 (10%) <b>7</b> <b>6</b>	23, 40, 72, 105	0
1	B	307/331 (92%)	0.42	23 (7%) <b>15</b> <b>13</b>	24, 36, 62, 94	0
All	All	616/662 (93%)	0.52	56 (9%) <b>10</b> <b>9</b>	23, 38, 70, 105	0

All (56) RSRZ outliers are listed below:

Mol	Chain	Res	Type	RSRZ
1	A	264	GLY	11.1
1	B	72	LEU	8.0
1	B	68	LEU	5.6
1	B	76	ASP	5.4
1	B	66	THR	5.3
1	B	73	GLY	5.0
1	B	71	ALA	4.9
1	A	278	ALA	4.9
1	A	227	LEU	4.8
1	A	153	PRO	4.8
1	B	69	LEU	4.6
1	A	111	GLU	4.3
1	A	110	GLY	4.1
1	A	277	ASN	4.0
1	A	92	GLY	3.8
1	B	70	VAL	3.8
1	A	263	SER	3.8
1	A	300	PRO	3.8
1	A	223	PRO	3.4
1	A	217	LEU	3.4
1	B	78	ILE	3.3
1	A	112	ILE	3.0
1	A	76	ASP	3.0
1	B	261	GLN	3.0

*Continued on next page...*

*Continued from previous page...*

Mol	Chain	Res	Type	RSRZ
1	A	194	ILE	3.0
1	A	280	PRO	2.9
1	A	279	GLY	2.8
1	B	74	SER	2.7
1	B	75	ARG	2.7
1	A	354	THR	2.7
1	A	46	MET	2.7
1	A	154	PRO	2.5
1	B	80	TYR	2.5
1	B	47	PRO	2.5
1	B	65	THR	2.5
1	A	359	PRO	2.4
1	B	193	LEU	2.4
1	A	358	ILE	2.4
1	A	352	VAL	2.3
1	A	214	ILE	2.3
1	B	134[A]	VAL	2.3
1	A	192	ALA	2.3
1	B	355	PRO	2.3
1	B	302	GLY	2.3
1	A	226	ARG	2.3
1	A	357	SER	2.2
1	A	355	PRO	2.2
1	B	62	LYS	2.2
1	A	229	LEU	2.1
1	A	262	LEU	2.1
1	B	166	ILE	2.1
1	B	260	GLY	2.1
1	A	133	ALA	2.0
1	A	225	GLU	2.0
1	A	169	LEU	2.0
1	B	46	MET	2.0

## 6.2 Non-standard residues in protein, DNA, RNA chains ⓘ

There are no non-standard protein/DNA/RNA residues in this entry.

## 6.3 Carbohydrates ⓘ

There are no carbohydrates in this entry.

## 6.4 Ligands [i](#)

In the following table, the Atoms column lists the number of modelled atoms in the group and the number defined in the chemical component dictionary. LLDF column lists the quality of electron density of the group with respect to its neighbouring residues in protein, DNA or RNA chains. The B-factors column lists the minimum, median, 95<sup>th</sup> percentile and maximum values of B factors of atoms in the group. The column labelled 'Q< 0.9' lists the number of atoms with occupancy less than 0.9.

Mol	Type	Chain	Res	Atoms	RSCC	RSR	LLDF	B-factors(Å <sup>2</sup> )	Q<0.9
2	N50	A	501	17/17	0.81	0.22	0.52	26,43,58,59	0
3	SO4	A	502	5/5	0.98	0.17	-0.16	36,46,47,56	0
3	SO4	B	402	5/5	0.98	0.13	-0.78	51,51,58,63	0
2	N50	B	401	17/17	0.92	0.17	-0.79	22,30,38,49	0

## 6.5 Other polymers [i](#)

There are no such residues in this entry.