



# Full wwPDB X-ray Structure Validation Report ⓘ

Feb 12, 2017 – 09:55 pm GMT

PDB ID : 1IW9  
Title : Crystal Structure of the M Intermediate of Bacteriorhodopsin  
Authors : Takeda, K.; Matsui, Y.; Kamiya, N.; Adachi, S.; Okumura, H.; Kouyama, T.;  
RIKEN Structural Genomics/Proteomics Initiative (RSGI)  
Deposited on : 2002-04-25  
Resolution : 2.50 Å(reported)

This is a Full wwPDB X-ray Structure Validation Report for a publicly released PDB entry.

We welcome your comments at [validation@mail.wwpdb.org](mailto:validation@mail.wwpdb.org)

A user guide is available at

<http://wwpdb.org/validation/2016/XrayValidationReportHelp>

with specific help available everywhere you see the ⓘ symbol.

---

The following versions of software and data (see [references ⓘ](#)) were used in the production of this report:

MolProbity : 4.02b-467  
Mogul : 1.7.2 (RC1), CSD as538be (2017)  
Xtriage (Phenix) : **NOT EXECUTED**  
EDS : **NOT EXECUTED**  
Percentile statistics : 20161228.v01 (using entries in the PDB archive December 28th 2016)  
Ideal geometry (proteins) : Engh & Huber (2001)  
Ideal geometry (DNA, RNA) : Parkinson et al. (1996)  
Validation Pipeline (wwPDB-VP) : recalc28949

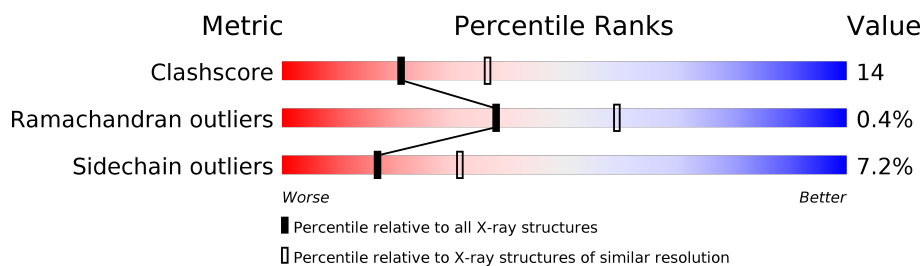
# 1 Overall quality at a glance

The following experimental techniques were used to determine the structure:

*X-RAY DIFFRACTION*

The reported resolution of this entry is 2.50 Å.

Percentile scores (ranging between 0-100) for global validation metrics of the entry are shown in the following graphic. The table shows the number of entries on which the scores are based.



Metric	Whole archive (#Entries)	Similar resolution (#Entries, resolution range(Å))
Clashscore	112137	4554 (2.50-2.50)
Ramachandran outliers	110173	4463 (2.50-2.50)
Sidechain outliers	110143	4465 (2.50-2.50)

The table below summarises the geometric issues observed across the polymeric chains and their fit to the electron density. The red, orange, yellow and green segments on the lower bar indicate the fraction of residues that contain outliers for  $\geq 3$ , 2, 1 and 0 types of geometric quality criteria. A grey segment represents the fraction of residues that are not modelled. The numeric value for each fraction is indicated below the corresponding segment, with a dot representing fractions  $\leq 5\%$ . The upper red bar (where present) indicates the fraction of residues that have poor fit to the electron density. The numeric value is given above the bar.

Note EDS was not executed.

Mol	Chain	Length	Quality of chain
1	A	248	

The following table lists non-polymeric compounds, carbohydrate monomers and non-standard residues in protein, DNA, RNA chains that are outliers for geometric or electron-density-fit criteria:

Mol	Type	Chain	Res	Chirality	Geometry	Clashes	Electron density
2	GLC	A	400	X	-	-	-

## 2 Entry composition [i](#)

There are 6 unique types of molecules in this entry. The entry contains 2073 atoms, of which 0 are hydrogens and 0 are deuteriums.

In the tables below, the ZeroOcc column contains the number of atoms modelled with zero occupancy, the AltConf column contains the number of residues with at least one atom in alternate conformation and the Trace column contains the number of residues modelled with at most 2 atoms.

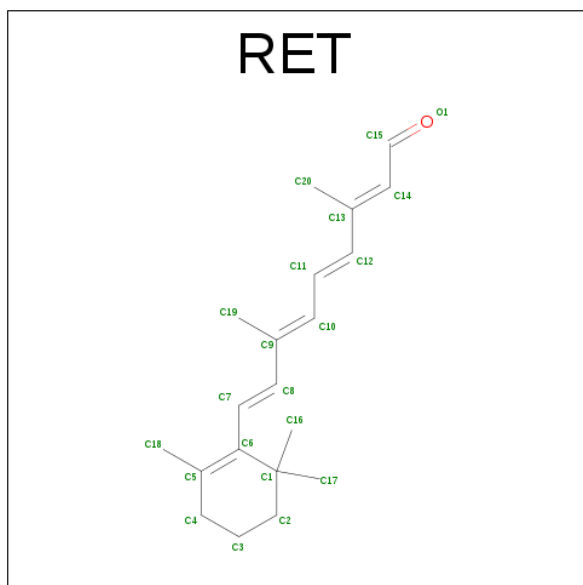
- Molecule 1 is a protein called bacteriorhodopsin.

Mol	Chain	Residues	Atoms					ZeroOcc	AltConf	Trace
1	A	227	Total	C	N	O	S	0	0	0
			1750	1177	265	299	9			

- Molecule 2 is a polymer of unknown type called SUGAR (3-MER).

Mol	Chain	Residues	Atoms			ZeroOcc	AltConf
2	A	3	Total	C	O	0	0
			33	18	15		

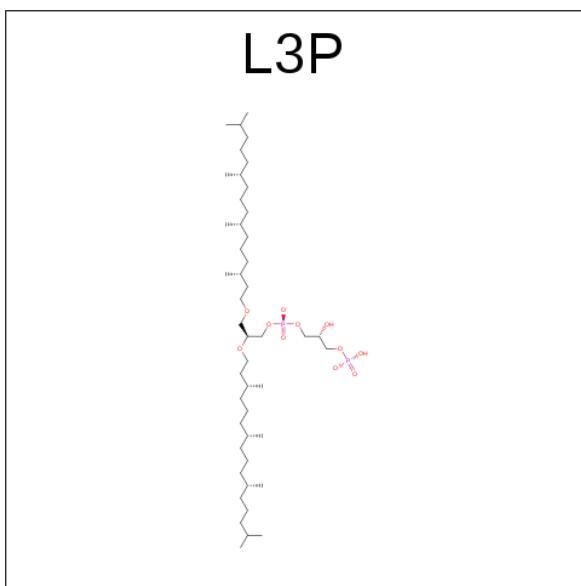
- Molecule 3 is RETINAL (three-letter code: RET) (formula: C<sub>20</sub>H<sub>28</sub>O).



Mol	Chain	Residues	Atoms		ZeroOcc	AltConf
3	A	1	Total	C	0	0
			20	20		

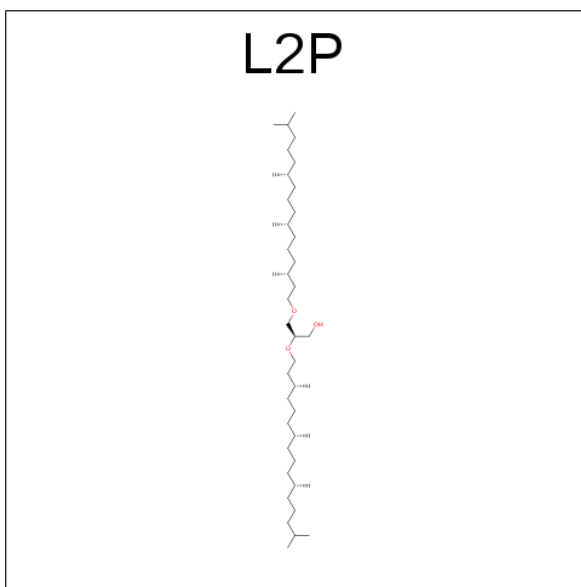
- Molecule 4 is 2,3-DI-O-PHYTANLY-3-SN-GLYCERO-1-PHOSPHORYL-3'-SN-GLYCER

OL-1'-PHOSPHATE (three-letter code: L3P) (formula:  $C_{46}H_{94}O_{11}P_2$ ).



Mol	Chain	Residues	Atoms				ZeroOcc	AltConf
4	A	1	Total	C	O	P	0	0
			59	46	11	2		
4	A	1	Total	C	O	P	0	0
			40	33	6	1		
4	A	1	Total	C	O	P	0	0
			50	43	6	1		
4	A	1	Total	C	O	P	0	0
			50	43	6	1		

- Molecule 5 is 2,3-DI-PHYTANYL-GLYCEROL (three-letter code: L2P) (formula:  $C_{43}H_{88}O_3$ ).



Mol	Chain	Residues	Atoms			ZeroOcc	AltConf
5	A	1	Total	C	O	0	0
			46	43	3		

- Molecule 6 is water.

Mol	Chain	Residues	Atoms	ZeroOcc	AltConf
6	A	25	Total O 25 25	1	0

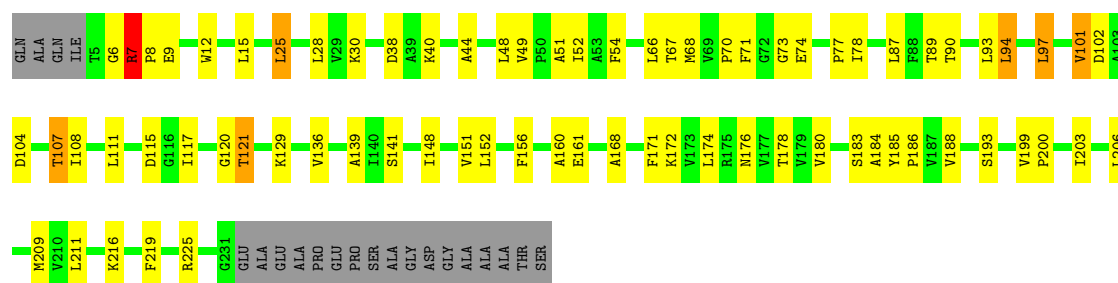
### 3 Residue-property plots [i](#)

These plots are drawn for all protein, RNA and DNA chains in the entry. The first graphic for a chain summarises the proportions of the various outlier classes displayed in the second graphic. The second graphic shows the sequence view annotated by issues in geometry and electron density. Residues are color-coded according to the number of geometric quality criteria for which they contain at least one outlier: green = 0, yellow = 1, orange = 2 and red = 3 or more. A red dot above a residue indicates a poor fit to the electron density ( $RSRZ > 2$ ). Stretches of 2 or more consecutive residues without any outlier are shown as a green connector. Residues present in the sample, but not in the model, are shown in grey.

Note EDS was not executed.

- Molecule 1: bacteriorhodopsin

Chain A: 



## 4 Data and refinement statistics

Xtriage (Phenix) and EDS were not executed - this section is therefore incomplete.

Property	Value	Source
Space group	P 6 2 2	Depositor
Cell constants a, b, c, $\alpha$ , $\beta$ , $\gamma$	102.30Å 102.30Å 112.30Å 90.00° 90.00° 120.00°	Depositor
Resolution (Å)	15.30 – 2.50	Depositor
% Data completeness (in resolution range)	84.0 (15.30-2.50)	Depositor
$R_{merge}$	0.07	Depositor
$R_{sym}$	(Not available)	Depositor
Refinement program	CNS 1.0	Depositor
R, $R_{free}$	0.224 , 0.271	Depositor
Estimated twinning fraction	No twinning to report.	Xtriage
Total number of atoms	2073	wwPDB-VP
Average B, all atoms (Å <sup>2</sup> )	46.0	wwPDB-VP

## 5 Model quality [i](#)

### 5.1 Standard geometry [i](#)

Bond lengths and bond angles in the following residue types are not validated in this section: GLC, RET, L2P, GAL, L3P, MAN

The Z score for a bond length (or angle) is the number of standard deviations the observed value is removed from the expected value. A bond length (or angle) with  $|Z| > 5$  is considered an outlier worth inspection. RMSZ is the root-mean-square of all Z scores of the bond lengths (or angles).

Mol	Chain	Bond lengths		Bond angles	
		RMSZ	$\# Z  > 5$	RMSZ	$\# Z  > 5$
1	A	0.39	0/1798	0.59	0/2457

Chiral center outliers are detected by calculating the chiral volume of a chiral center and verifying if the center is modelled as a planar moiety or with the opposite hand. A planarity outlier is detected by checking planarity of atoms in a peptide group, atoms in a mainchain group or atoms of a sidechain that are expected to be planar.

Mol	Chain	#Chirality outliers	#Planarity outliers
2	A	1	0

There are no bond length outliers.

There are no bond angle outliers.

All (1) chirality outliers are listed below:

Mol	Chain	Res	Type	Atom
2	A	400	GLC	C1

There are no planarity outliers.

### 5.2 Too-close contacts [i](#)

In the following table, the Non-H and H(model) columns list the number of non-hydrogen atoms and hydrogen atoms in the chain respectively. The H(added) column lists the number of hydrogen atoms added and optimized by MolProbity. The Clashes column lists the number of clashes within the asymmetric unit, whereas Symm-Clashes lists symmetry related clashes.

Mol	Chain	Non-H	H(model)	H(added)	Clashes	Symm-Clashes
1	A	1750	0	1802	57	0

*Continued on next page...*



*Continued from previous page...*

Mol	Chain	Non-H	H(model)	H(added)	Clashes	Symm-Clashes
2	A	33	0	28	2	0
3	A	20	0	27	4	0
4	A	199	0	331	4	0
5	A	46	0	86	2	0
6	A	25	0	0	2	0
All	All	2073	0	2274	59	0

The all-atom clashscore is defined as the number of clashes found per 1000 atoms (including hydrogen atoms). The all-atom clashscore for this structure is 14.

All (59) close contacts within the same asymmetric unit are listed below, sorted by their clash magnitude.

Atom-1	Atom-2	Interatomic distance (Å)	Clash overlap (Å)
1:A:89:THR:HG21	1:A:216:LYS:NZ	1.79	0.97
1:A:121:THR:HG22	1:A:141:SER:HB2	1.51	0.93
1:A:117:ILE:O	1:A:121:THR:HB	1.82	0.79
1:A:199:VAL:HG12	1:A:203:ILE:HB	1.67	0.76
1:A:40:LYS:HB2	6:A:624:HOH:O	1.87	0.75
1:A:200:PRO:HG2	1:A:203:ILE:HG12	1.69	0.75
1:A:25:LEU:HD13	4:A:260:L3P:H302	1.73	0.71
1:A:6:GLY:HA2	1:A:9:GLU:OE1	1.94	0.67
1:A:111:LEU:HD21	1:A:151:VAL:HG11	1.76	0.67
1:A:104:ASP:HB2	1:A:107:THR:HG22	1.76	0.67
1:A:101:VAL:HG23	1:A:160:ALA:HB2	1.76	0.67
1:A:70:PRO:HA	1:A:74:GLU:O	1.96	0.66
1:A:44:ALA:HA	4:A:260:L3P:H111	1.77	0.65
1:A:184:ALA:O	1:A:188:VAL:HG23	1.98	0.63
1:A:186:PRO:HB3	3:A:250:RET:H183	1.79	0.63
1:A:49:VAL:HG13	1:A:89:THR:HG23	1.81	0.62
1:A:104:ASP:O	1:A:108:ILE:HG13	2.00	0.62
1:A:168:ALA:O	1:A:172:LYS:HG2	2.01	0.60
1:A:48:LEU:O	1:A:52:ILE:HG13	2.02	0.60
1:A:71:PHE:C	1:A:73:GLY:H	2.06	0.58
1:A:174:LEU:O	1:A:178:THR:HG23	2.04	0.57
1:A:121:THR:CG2	1:A:141:SER:HB2	2.31	0.56
1:A:7:ARG:H	1:A:8:PRO:HD2	1.70	0.55
1:A:40:LYS:HZ3	4:A:260:L3P:H62	1.72	0.54
1:A:28:LEU:HD13	4:A:260:L3P:H522	1.90	0.54
3:A:250:RET:H161	3:A:250:RET:H8	1.89	0.53
1:A:6:GLY:HA3	1:A:66:LEU:HD11	1.91	0.53
1:A:107:THR:O	1:A:111:LEU:HD23	2.10	0.52

*Continued on next page...*

*Continued from previous page...*

Atom-1	Atom-2	Interatomic distance (Å)	Clash overlap (Å)
1:A:30:LYS:HE2	1:A:225:ARG:HG2	1.92	0.51
1:A:136:VAL:O	1:A:139:ALA:HB3	2.12	0.50
1:A:67:THR:HG22	1:A:78:ILE:O	2.12	0.49
1:A:141:SER:OG	3:A:250:RET:H41	2.13	0.49
1:A:90:THR:HB	1:A:115:ASP:OD2	2.13	0.49
1:A:152:LEU:O	1:A:156:PHE:HB2	2.14	0.48
1:A:193:SER:HB3	6:A:609:HOH:O	2.14	0.48
1:A:120:GLY:HA3	5:A:270:L2P:H491	1.96	0.47
1:A:104:ASP:O	1:A:107:THR:HG23	2.12	0.47
1:A:87:LEU:HD21	5:A:270:L2P:H251	1.95	0.47
1:A:111:LEU:HD12	1:A:148:ILE:HG23	1.96	0.47
1:A:66:LEU:HD23	1:A:67:THR:N	2.29	0.47
1:A:51:ALA:O	1:A:54:PHE:HB3	2.16	0.46
1:A:129:LYS:HZ1	2:A:410:MAN:H61	1.81	0.46
1:A:156:PHE:HB3	1:A:171:PHE:CZ	2.51	0.46
1:A:7:ARG:HB3	1:A:8:PRO:CD	2.45	0.45
1:A:129:LYS:NZ	2:A:410:MAN:H61	2.31	0.45
1:A:185:TYR:N	1:A:186:PRO:HD2	2.32	0.45
1:A:25:LEU:HA	1:A:25:LEU:HD12	1.81	0.45
1:A:15:LEU:HD23	1:A:209:MET:CE	2.48	0.44
1:A:97:LEU:HD13	1:A:219:PHE:HZ	1.83	0.43
1:A:176:ASN:O	1:A:180:VAL:HG23	2.18	0.43
3:A:250:RET:H7	3:A:250:RET:H181	1.78	0.43
1:A:199:VAL:CG1	1:A:203:ILE:HB	2.43	0.42
1:A:12:TRP:CE3	1:A:206:LEU:HD23	2.54	0.42
1:A:7:ARG:HB3	1:A:8:PRO:HD3	2.01	0.42
1:A:111:LEU:HD21	1:A:151:VAL:CG1	2.48	0.42
1:A:71:PHE:C	1:A:73:GLY:N	2.72	0.41
1:A:104:ASP:HB2	1:A:107:THR:CG2	2.49	0.41
1:A:68:MET:CE	1:A:77:PRO:HB3	2.51	0.41
1:A:94:LEU:HD11	1:A:152:LEU:HD11	2.03	0.40

There are no symmetry-related clashes.

## 5.3 Torsion angles ⓘ

### 5.3.1 Protein backbone ⓘ

In the following table, the Percentiles column shows the percent Ramachandran outliers of the chain as a percentile score with respect to all X-ray entries followed by that with respect to entries of similar resolution.

The Analysed column shows the number of residues for which the backbone conformation was analysed, and the total number of residues.

Mol	Chain	Analysed	Favoured	Allowed	Outliers	Percentiles
1	A	225/248 (91%)	217 (96%)	7 (3%)	1 (0%)	38 59

All (1) Ramachandran outliers are listed below:

Mol	Chain	Res	Type
1	A	7	ARG

### 5.3.2 Protein sidechains ⓘ

In the following table, the Percentiles column shows the percent sidechain outliers of the chain as a percentile score with respect to all X-ray entries followed by that with respect to entries of similar resolution.

The Analysed column shows the number of residues for which the sidechain conformation was analysed, and the total number of residues.

Mol	Chain	Analysed	Rotameric	Outliers	Percentiles
1	A	181/194 (93%)	168 (93%)	13 (7%)	17 31

All (13) residues with a non-rotameric sidechain are listed below:

Mol	Chain	Res	Type
1	A	7	ARG
1	A	25	LEU
1	A	38	ASP
1	A	93	LEU
1	A	94	LEU
1	A	97	LEU
1	A	101	VAL
1	A	102	ASP
1	A	107	THR
1	A	121	THR
1	A	161	GLU
1	A	183	SER
1	A	211	LEU

Some sidechains can be flipped to improve hydrogen bonding and reduce clashes. All (1) such sidechains are listed below:

Mol	Chain	Res	Type
1	A	105	GLN

### 5.3.3 RNA [i](#)

There are no RNA molecules in this entry.

## 5.4 Non-standard residues in protein, DNA, RNA chains [i](#)

There are no non-standard protein/DNA/RNA residues in this entry.

## 5.5 Carbohydrates [i](#)

3 carbohydrates are modelled in this entry.

In the following table, the Counts columns list the number of bonds (or angles) for which Mogul statistics could be retrieved, the number of bonds (or angles) that are observed in the model and the number of bonds (or angles) that are defined in the chemical component dictionary. The Link column lists molecule types, if any, to which the group is linked. The Z score for a bond length (or angle) is the number of standard deviations the observed value is removed from the expected value. A bond length (or angle) with  $|Z| > 2$  is considered an outlier worth inspection. RMSZ is the root-mean-square of all Z scores of the bond lengths (or angles).

Mol	Type	Chain	Res	Link	Bond lengths			Bond angles		
					Counts	RMSZ	$\# Z  > 2$	Counts	RMSZ	$\# Z  > 2$
2	GLC	A	400	2,5	11,11,12	2.36	4 (36%)	13,15,17	1.18	1 (7%)
2	MAN	A	410	2	11,11,12	2.15	6 (54%)	13,15,17	1.90	4 (30%)
2	GAL	A	420	2	11,11,12	2.67	6 (54%)	13,15,17	1.24	2 (15%)

In the following table, the Chirals column lists the number of chiral outliers, the number of chiral centers analysed, the number of these observed in the model and the number defined in the chemical component dictionary. Similar counts are reported in the Torsion and Rings columns. '-' means no outliers of that kind were identified.

Mol	Type	Chain	Res	Link	Chirals	Torsions	Rings
2	GLC	A	400	2,5	1/1/4/5	0/2/19/22	0/1/1/1
2	MAN	A	410	2	-	0/2/19/22	0/1/1/1
2	GAL	A	420	2	-	0/2/19/22	0/1/1/1

All (16) bond length outliers are listed below:

Mol	Chain	Res	Type	Atoms	Z	Observed(Å)	Ideal(Å)
2	A	410	MAN	O5-C5	2.00	1.47	1.43
2	A	410	MAN	O5-C1	2.05	1.47	1.43
2	A	410	MAN	C4-C5	2.20	1.57	1.53
2	A	410	MAN	C1-C2	2.38	1.57	1.52
2	A	420	GAL	C2-C3	2.50	1.55	1.52
2	A	420	GAL	C1-C2	2.71	1.58	1.52
2	A	400	GLC	C2-C3	3.24	1.56	1.52
2	A	420	GAL	C4-C3	3.36	1.60	1.52
2	A	400	GLC	C1-C2	3.36	1.60	1.52
2	A	410	MAN	O2-C2	3.40	1.50	1.43
2	A	420	GAL	C4-C5	3.62	1.60	1.53
2	A	420	GAL	O5-C1	3.66	1.49	1.43
2	A	400	GLC	O5-C1	3.81	1.49	1.43
2	A	410	MAN	C2-C3	4.15	1.58	1.52
2	A	400	GLC	O5-C5	4.28	1.52	1.43
2	A	420	GAL	O5-C5	4.78	1.53	1.43

All (7) bond angle outliers are listed below:

Mol	Chain	Res	Type	Atoms	Z	Observed(°)	Ideal(°)
2	A	410	MAN	O5-C1-C2	-2.40	107.03	110.79
2	A	410	MAN	C2-C3-C4	-2.29	106.87	110.88
2	A	420	GAL	C3-C4-C5	-2.20	106.34	110.22
2	A	420	GAL	C6-C5-C4	-2.13	108.03	113.00
2	A	400	GLC	O6-C6-C5	2.40	119.41	111.34
2	A	410	MAN	C1-O5-C5	3.47	116.95	112.17
2	A	410	MAN	O6-C6-C5	4.68	127.09	111.34

All (1) chirality outliers are listed below:

Mol	Chain	Res	Type	Atom
2	A	400	GLC	C1

There are no torsion outliers.

There are no ring outliers.

1 monomer is involved in 2 short contacts:

Mol	Chain	Res	Type	Clashes	Symm-Clashes
2	A	410	MAN	2	0

## 5.6 Ligand geometry

6 ligands are modelled in this entry.

In the following table, the Counts columns list the number of bonds (or angles) for which Mogul statistics could be retrieved, the number of bonds (or angles) that are observed in the model and the number of bonds (or angles) that are defined in the chemical component dictionary. The Link column lists molecule types, if any, to which the group is linked. The Z score for a bond length (or angle) is the number of standard deviations the observed value is removed from the expected value. A bond length (or angle) with  $|Z| > 2$  is considered an outlier worth inspection. RMSZ is the root-mean-square of all Z scores of the bond lengths (or angles).

Mol	Type	Chain	Res	Link	Bond lengths			Bond angles		
					Counts	RMSZ	# $ Z  > 2$	Counts	RMSZ	# $ Z  > 2$
3	RET	A	250	1	19,20,21	1.83	4 (21%)	27,27,28	2.18	11 (40%)
4	L3P	A	260	-	58,58,58	1.03	6 (10%)	64,73,73	1.38	8 (12%)
5	L2P	A	270	2	45,45,45	1.32	6 (13%)	49,53,53	2.09	14 (28%)
4	L3P	A	280	-	39,39,58	1.97	11 (28%)	44,48,73	1.10	2 (4%)
4	L3P	A	290	-	49,49,58	1.71	14 (28%)	56,60,73	1.29	6 (10%)
4	L3P	A	300	-	49,49,58	1.55	12 (24%)	56,60,73	1.36	5 (8%)

In the following table, the Chirals column lists the number of chiral outliers, the number of chiral centers analysed, the number of these observed in the model and the number defined in the chemical component dictionary. Similar counts are reported in the Torsion and Rings columns. '-' means no outliers of that kind were identified.

Mol	Type	Chain	Res	Link	Chirals	Torsions	Rings
3	RET	A	250	1	-	0/13/30/31	0/1/1/1
4	L3P	A	260	-	-	0/67/67/67	0/0/0/0
5	L2P	A	270	2	-	0/51/51/51	0/0/0/0
4	L3P	A	280	-	-	0/43/43/67	0/0/0/0
4	L3P	A	290	-	-	0/55/55/67	0/0/0/0
4	L3P	A	300	-	-	0/55/55/67	0/0/0/0

All (53) bond length outliers are listed below:

Mol	Chain	Res	Type	Atoms	Z	Observed(Å)	Ideal(Å)
3	A	250	RET	C2-C3	-3.27	1.44	1.52
4	A	290	L3P	O2-C41	2.01	1.48	1.43
4	A	300	L3P	C56-C55	2.04	1.61	1.52
4	A	280	L3P	C12-C11	2.06	1.58	1.50
4	A	260	L3P	C42-C41	2.07	1.58	1.50
4	A	290	L3P	C56-C55	2.09	1.61	1.52
4	A	300	L3P	C14-C13	2.10	1.59	1.52

*Continued on next page...*

*Continued from previous page...*

Mol	Chain	Res	Type	Atoms	Z	Observed(Å)	Ideal(Å)
4	A	260	L3P	C1-C2	2.11	1.56	1.50
4	A	300	L3P	C26-C25	2.11	1.61	1.52
5	A	270	L2P	O2-C2	2.13	1.49	1.43
4	A	290	L3P	C26-C25	2.19	1.61	1.52
4	A	260	L3P	P2-O6	2.19	1.67	1.60
4	A	300	L3P	C17-C18	2.20	1.64	1.52
4	A	300	L3P	C15-C13	2.21	1.64	1.52
5	A	270	L2P	C47-C48	2.23	1.64	1.52
4	A	280	L3P	C56-C57	2.24	1.62	1.52
4	A	290	L3P	C55-C53	2.27	1.65	1.52
5	A	270	L2P	C42-C41	2.27	1.58	1.50
4	A	260	L3P	P1-O3	2.29	1.68	1.59
4	A	280	L3P	C42-C41	2.30	1.59	1.50
4	A	290	L3P	C25-C23	2.31	1.65	1.52
4	A	290	L3P	C19-C18	2.31	1.60	1.52
4	A	290	L3P	C26-C27	2.32	1.62	1.52
4	A	300	L3P	C55-C53	2.32	1.65	1.52
4	A	300	L3P	O1-C11	2.37	1.52	1.42
4	A	290	L3P	O1-C11	2.43	1.52	1.42
5	A	270	L2P	C25-C23	2.43	1.66	1.52
4	A	290	L3P	C15-C13	2.45	1.66	1.52
4	A	280	L3P	C56-C55	2.46	1.63	1.52
4	A	290	L3P	C17-C18	2.47	1.66	1.52
4	A	280	L3P	O1-C1	2.51	1.49	1.42
4	A	300	L3P	C26-C27	2.53	1.63	1.52
5	A	270	L2P	O2-C41	2.57	1.49	1.43
4	A	300	L3P	C12-C11	2.68	1.60	1.50
4	A	300	L3P	C3-C2	2.72	1.58	1.50
4	A	290	L3P	C12-C11	2.76	1.60	1.50
4	A	290	L3P	P1-O2P	2.79	1.66	1.54
4	A	260	L3P	O2-C2	2.79	1.50	1.43
3	A	250	RET	C7-C6	2.80	1.55	1.45
4	A	300	L3P	P1-O2P	2.81	1.66	1.54
4	A	280	L3P	O2-C41	2.83	1.50	1.43
4	A	280	L3P	P1-O3	2.83	1.69	1.60
4	A	260	L3P	O2-C41	3.09	1.51	1.43
3	A	250	RET	C5-C6	3.16	1.39	1.34
4	A	290	L3P	C3-C2	3.25	1.59	1.50
5	A	270	L2P	C26-C25	3.37	1.67	1.52
4	A	280	L3P	P1-O2P	3.81	1.70	1.54
4	A	300	L3P	P1-O3	3.91	1.72	1.60
4	A	280	L3P	C1-C2	3.92	1.61	1.50

*Continued on next page...*

*Continued from previous page...*

Mol	Chain	Res	Type	Atoms	Z	Observed(Å)	Ideal(Å)
4	A	280	L3P	C3-C2	4.31	1.62	1.50
4	A	290	L3P	P1-O3	4.52	1.74	1.60
3	A	250	RET	C1-C6	5.00	1.60	1.53
4	A	280	L3P	O2-C2	5.37	1.57	1.43

All (46) bond angle outliers are listed below:

Mol	Chain	Res	Type	Atoms	Z	Observed(°)	Ideal(°)
3	A	250	RET	C20-C13-C14	-4.03	111.56	123.66
3	A	250	RET	C18-C5-C6	-3.51	120.58	124.51
4	A	300	L3P	C41-O2-C2	-3.47	107.27	115.38
5	A	270	L2P	C14-C13-C12	-3.26	99.47	111.36
4	A	260	L3P	C26-C25-C23	-3.01	105.86	115.73
5	A	270	L2P	C54-C53-C52	-2.89	100.82	111.36
3	A	250	RET	C11-C10-C9	-2.86	123.22	127.31
3	A	250	RET	C1-C6-C5	-2.78	118.68	122.59
4	A	300	L3P	C47-C46-C45	-2.73	100.03	113.25
5	A	270	L2P	C16-C15-C13	-2.73	106.76	115.73
4	A	260	L3P	C46-C47-C48	-2.64	107.08	115.73
3	A	250	RET	C7-C8-C9	-2.62	122.28	126.21
5	A	270	L2P	C30-C28-C29	-2.59	98.23	110.50
5	A	270	L2P	C16-C17-C18	-2.55	107.35	115.73
5	A	270	L2P	C22-C21-C20	-2.49	101.23	113.25
5	A	270	L2P	C19-C18-C20	-2.45	102.43	111.36
4	A	260	L3P	C46-C45-C43	-2.35	108.01	115.73
3	A	250	RET	C11-C12-C13	-2.10	120.53	126.42
4	A	260	L3P	C3-C2-C1	-2.02	107.29	111.86
4	A	280	L3P	C50-C48-C47	-2.02	102.40	112.10
4	A	290	L3P	C21-C20-C18	2.00	122.31	115.73
3	A	250	RET	C3-C4-C5	2.04	117.30	113.78
4	A	260	L3P	P2-O6-C6	2.20	124.36	118.30
4	A	290	L3P	C19-C18-C17	2.30	119.76	111.36
4	A	260	L3P	O1-C1-C2	2.44	115.05	109.36
3	A	250	RET	C1-C6-C7	2.44	122.58	115.73
5	A	270	L2P	C46-C47-C48	2.44	123.74	115.73
4	A	290	L3P	O4-P1-O3	2.48	113.34	106.73
3	A	250	RET	C18-C5-C4	2.53	118.25	113.45
5	A	270	L2P	C49-C48-C47	2.72	121.29	111.36
5	A	270	L2P	C51-C52-C53	2.78	124.85	115.73
5	A	270	L2P	C26-C27-C28	2.89	129.75	115.96
4	A	300	L3P	O2P-P1-O3	2.97	114.65	106.73
5	A	270	L2P	O3-C3-C2	3.00	120.05	111.76

*Continued on next page...*



*Continued from previous page...*

Mol	Chain	Res	Type	Atoms	Z	Observed(°)	Ideal(°)
4	A	300	L3P	O1-C1-C2	3.06	116.50	109.36
4	A	290	L3P	O2P-P1-O3	3.32	115.58	106.73
4	A	290	L3P	O1-C1-C2	3.37	117.23	109.36
4	A	280	L3P	C51-C50-C48	3.49	127.18	115.73
3	A	250	RET	C2-C1-C6	3.52	115.99	110.48
4	A	290	L3P	C16-C17-C18	3.72	127.94	115.73
4	A	260	L3P	C11-O1-C1	4.16	128.58	113.46
3	A	250	RET	C20-C13-C12	4.40	125.11	118.10
4	A	300	L3P	C16-C17-C18	5.07	132.37	115.73
4	A	260	L3P	C41-O2-C2	5.50	128.26	115.38
5	A	270	L2P	C29-C28-C27	5.55	147.35	111.50
5	A	270	L2P	O1-C1-C2	8.09	128.25	109.36

There are no chirality outliers.

There are no torsion outliers.

There are no ring outliers.

3 monomers are involved in 10 short contacts:

Mol	Chain	Res	Type	Clashes	Symm-Clashes
3	A	250	RET	4	0
4	A	260	L3P	4	0
5	A	270	L2P	2	0

## 5.7 Other polymers [i](#)

There are no such residues in this entry.

## 5.8 Polymer linkage issues [i](#)

There are no chain breaks in this entry.

## 6 Fit of model and data

### 6.1 Protein, DNA and RNA chains

EDS was not executed - this section is therefore empty.

### 6.2 Non-standard residues in protein, DNA, RNA chains

EDS was not executed - this section is therefore empty.

### 6.3 Carbohydrates

EDS was not executed - this section is therefore empty.

### 6.4 Ligands

EDS was not executed - this section is therefore empty.

### 6.5 Other polymers

EDS was not executed - this section is therefore empty.