



Full wwPDB X-ray Structure Validation Report ⓘ

Feb 13, 2017 – 07:59 pm GMT

PDB ID : 5IWC
Title : Mycobacterium tuberculosis CysM in complex with the Urea-scaffold inhibitor
3 [4-(3-([1,1'-Biphenyl]-3-yl)ureido)-2-hydroxybenzoic acid]
Authors : Schnell, R.; Maric, S.; Lindqvist, Y.; Schneider, G.
Deposited on : 2016-03-22
Resolution : 2.70 Å(reported)

This is a Full wwPDB X-ray Structure Validation Report for a publicly released PDB entry.

We welcome your comments at validation@mail.wwpdb.org

A user guide is available at

<http://wwpdb.org/validation/2016/XrayValidationReportHelp>

with specific help available everywhere you see the ⓘ symbol.

The following versions of software and data (see [references ⓘ](#)) were used in the production of this report:

MolProbity	:	4.02b-467
Mogul	:	1.7.2 (RC1), CSD as538be (2017)
Xtriage (Phenix)	:	1.9-1692
EDS	:	trunk28620
Percentile statistics	:	20161228.v01 (using entries in the PDB archive December 28th 2016)
Refmac	:	5.8.0135
CCP4	:	6.5.0
Ideal geometry (proteins)	:	Engh & Huber (2001)
Ideal geometry (DNA, RNA)	:	Parkinson et al. (1996)
Validation Pipeline (wwPDB-VP)	:	recalc28949

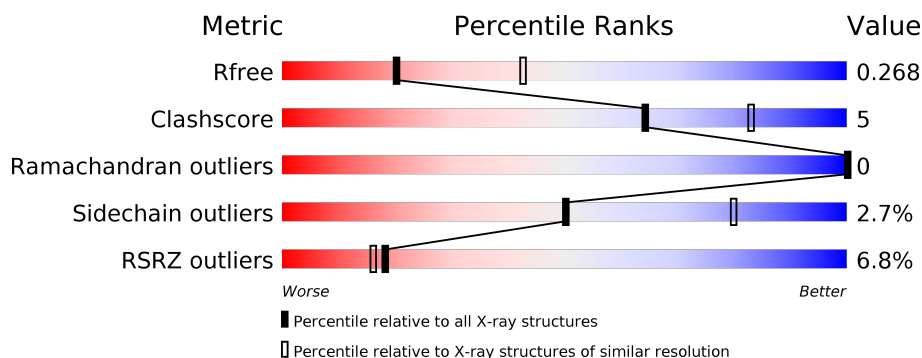
1 Overall quality at a glance

The following experimental techniques were used to determine the structure:

X-RAY DIFFRACTION

The reported resolution of this entry is 2.70 Å.

Percentile scores (ranging between 0-100) for global validation metrics of the entry are shown in the following graphic. The table shows the number of entries on which the scores are based.



Metric	Whole archive (#Entries)	Similar resolution (#Entries, resolution range(Å))
R_{free}	100719	2259 (2.70-2.70)
Clashscore	112137	2590 (2.70-2.70)
Ramachandran outliers	110173	2550 (2.70-2.70)
Sidechain outliers	110143	2550 (2.70-2.70)
RSRZ outliers	101464	2275 (2.70-2.70)

The table below summarises the geometric issues observed across the polymeric chains and their fit to the electron density. The red, orange, yellow and green segments on the lower bar indicate the fraction of residues that contain outliers for ≥ 3 , 2, 1 and 0 types of geometric quality criteria. A grey segment represents the fraction of residues that are not modelled. The numeric value for each fraction is indicated below the corresponding segment, with a dot representing fractions $\leq 5\%$. The upper red bar (where present) indicates the fraction of residues that have poor fit to the electron density. The numeric value is given above the bar.

Mol	Chain	Length	Quality of chain
1	A	326	<div> <div>8%</div> <div> <div></div> <div>83%</div> <div>7%</div> <div>9%</div> </div> </div>
1	B	326	<div> <div>5%</div> <div> <div></div> <div>84%</div> <div>6%</div> <div>10%</div> </div> </div>

2 Entry composition

There are 4 unique types of molecules in this entry. The entry contains 4572 atoms, of which 0 are hydrogens and 0 are deuteriums.

In the tables below, the ZeroOcc column contains the number of atoms modelled with zero occupancy, the AltConf column contains the number of residues with at least one atom in alternate conformation and the Trace column contains the number of residues modelled with at most 2 atoms.

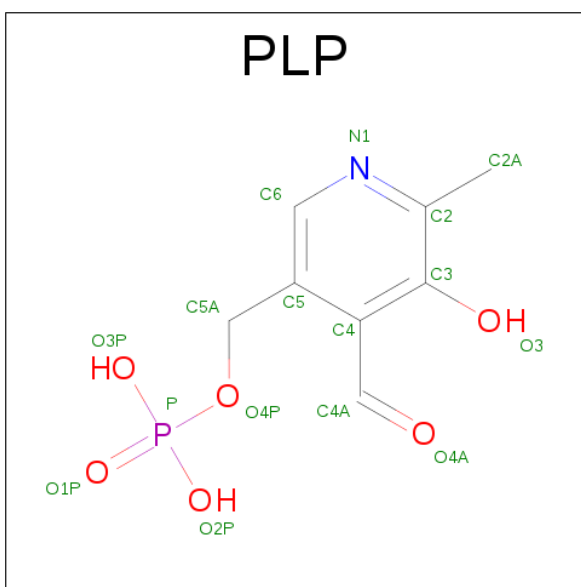
- Molecule 1 is a protein called O-phosphoserine sulfhydrylase.

Mol	Chain	Residues	Atoms					ZeroOcc	AltConf	Trace
1	A	297	Total	C	N	O	S	0	0	0
			2231	1400	397	427	7			
1	B	295	Total	C	N	O	S	0	1	0
			2223	1398	397	421	7			

There are 8 discrepancies between the modelled and reference sequences:

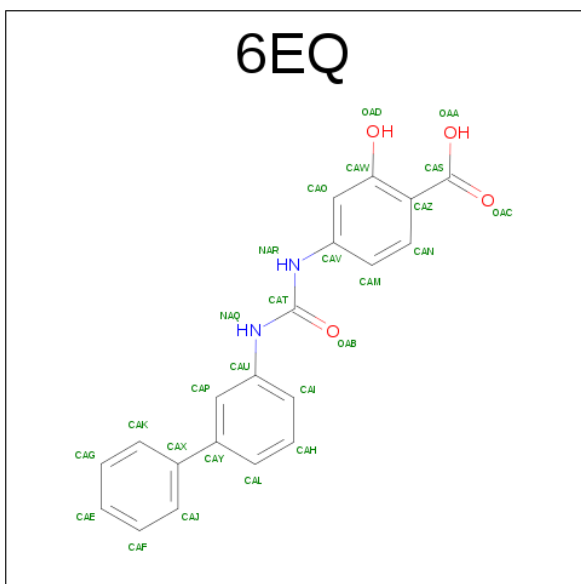
Chain	Residue	Modelled	Actual	Comment	Reference
A	-2	GLY	-	expression tag	UNP P9WP53
A	-1	SER	-	expression tag	UNP P9WP53
A	0	HIS	-	expression tag	UNP P9WP53
A	2	ALA	THR	engineered mutation	UNP P9WP53
B	-2	GLY	-	expression tag	UNP P9WP53
B	-1	SER	-	expression tag	UNP P9WP53
B	0	HIS	-	expression tag	UNP P9WP53
B	2	ALA	THR	engineered mutation	UNP P9WP53

- Molecule 2 is PYRIDOXAL-5'-PHOSPHATE (three-letter code: PLP) (formula: C₈H₁₀NO₆P).



Mol	Chain	Residues	Atoms					ZeroOcc	AltConf
2	A	1	Total 15	C 8	N 1	O 5	P 1	0	0
2	B	1	Total 15	C 8	N 1	O 5	P 1	0	0

- Molecule 3 is 4-[[([1,1'-biphenyl]-3-yl)carbamoyl]amino}-2-hydroxybenzoic acid (three-letter code: 6EQ) (formula: C₂₀H₁₆N₂O₄).



Mol	Chain	Residues	Atoms				ZeroOcc	AltConf
3	A	1	Total	C	N	O	0	0
			26	20	2	4		

Continued on next page...

Continued from previous page...

Mol	Chain	Residues	Atoms				ZeroOcc	AltConf
3	B	1	Total	C	N	O	0	0
			26	20	2	4		

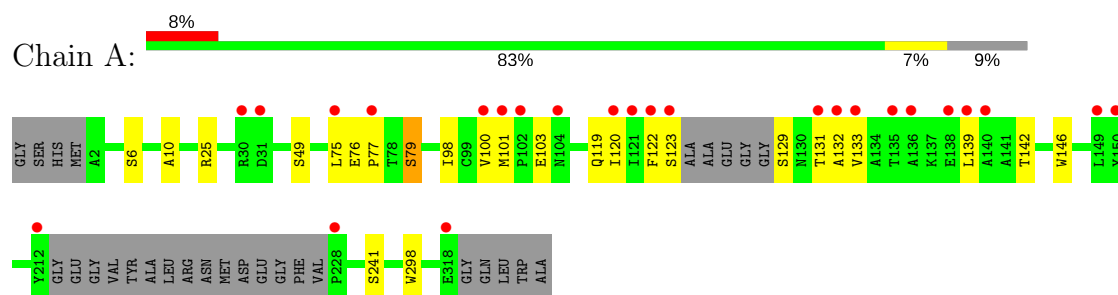
- Molecule 4 is water.

Mol	Chain	Residues	Atoms		ZeroOcc	AltConf
4	A	19	Total	O	0	0
			19	19		
4	B	17	Total	O	0	0
			17	17		

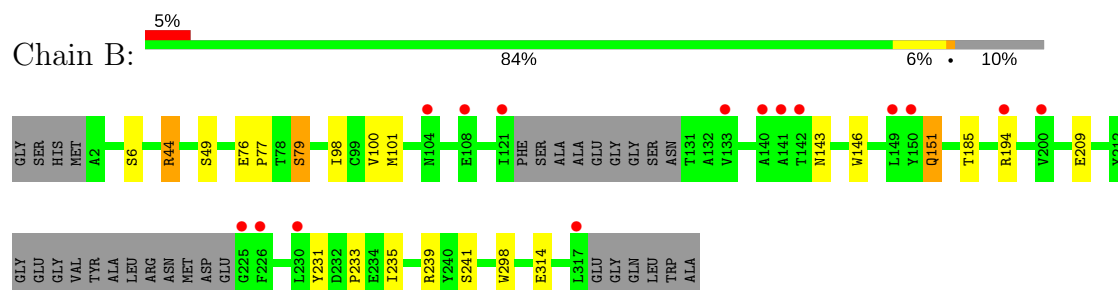
3 Residue-property plots [i](#)

These plots are drawn for all protein, RNA and DNA chains in the entry. The first graphic for a chain summarises the proportions of the various outlier classes displayed in the second graphic. The second graphic shows the sequence view annotated by issues in geometry and electron density. Residues are color-coded according to the number of geometric quality criteria for which they contain at least one outlier: green = 0, yellow = 1, orange = 2 and red = 3 or more. A red dot above a residue indicates a poor fit to the electron density ($RSRZ > 2$). Stretches of 2 or more consecutive residues without any outlier are shown as a green connector. Residues present in the sample, but not in the model, are shown in grey.

• Molecule 1: O-phosphoserine sulfhydrylase



• Molecule 1: O-phosphoserine sulfhydrylase



4 Data and refinement statistics

Property	Value	Source
Space group	P 21 21 21	Depositor
Cell constants a, b, c, α , β , γ	66.04Å 87.53Å 98.22Å 90.00° 90.00° 90.00°	Depositor
Resolution (Å)	65.43 – 2.70 66.04 – 2.70	Depositor EDS
% Data completeness (in resolution range)	96.1 (65.43-2.70) 96.1 (66.04-2.70)	Depositor EDS
R_{merge}	0.13	Depositor
R_{sym}	(Not available)	Depositor
$\langle I/\sigma(I) \rangle$ ¹	1.93 (at 2.69Å)	Xtriage
Refinement program	REFMAC 5.8.0107	Depositor
R, R_{free}	0.210 , 0.266 0.213 , 0.268	Depositor DCC
R_{free} test set	782 reflections (5.29%)	DCC
Wilson B-factor (Å ²)	51.0	Xtriage
Anisotropy	0.349	Xtriage
Bulk solvent k_{sol} (e/Å ³), B_{sol} (Å ²)	0.32 , 50.5	EDS
L-test for twinning ²	$\langle L \rangle = 0.48$, $\langle L^2 \rangle = 0.31$	Xtriage
Estimated twinning fraction	No twinning to report.	Xtriage
F_o, F_c correlation	0.93	EDS
Total number of atoms	4572	wwPDB-VP
Average B, all atoms (Å ²)	57.0	wwPDB-VP

Xtriage's analysis on translational NCS is as follows: *The largest off-origin peak in the Patterson function is 5.05% of the height of the origin peak. No significant pseudotranslation is detected.*

¹Intensities estimated from amplitudes.

²Theoretical values of $\langle |L| \rangle$, $\langle L^2 \rangle$ for acentric reflections are 0.5, 0.333 respectively for untwinned datasets, and 0.375, 0.2 for perfectly twinned datasets.

5 Model quality [i](#)

5.1 Standard geometry [i](#)

Bond lengths and bond angles in the following residue types are not validated in this section: 6EQ, PLP

The Z score for a bond length (or angle) is the number of standard deviations the observed value is removed from the expected value. A bond length (or angle) with $|Z| > 5$ is considered an outlier worth inspection. RMSZ is the root-mean-square of all Z scores of the bond lengths (or angles).

Mol	Chain	Bond lengths		Bond angles	
		RMSZ	$\# Z > 5$	RMSZ	$\# Z > 5$
1	A	0.54	0/2272	0.79	0/3091
1	B	0.56	0/2265	0.77	0/3083
All	All	0.55	0/4537	0.78	0/6174

Chiral center outliers are detected by calculating the chiral volume of a chiral center and verifying if the center is modelled as a planar moiety or with the opposite hand. A planarity outlier is detected by checking planarity of atoms in a peptide group, atoms in a mainchain group or atoms of a sidechain that are expected to be planar.

Mol	Chain	#Chirality outliers	#Planarity outliers
1	A	0	1

There are no bond length outliers.

There are no bond angle outliers.

There are no chirality outliers.

All (1) planarity outliers are listed below:

Mol	Chain	Res	Type	Group
1	A	119	GLN	Peptide

5.2 Too-close contacts [i](#)

In the following table, the Non-H and H(model) columns list the number of non-hydrogen atoms and hydrogen atoms in the chain respectively. The H(added) column lists the number of hydrogen atoms added and optimized by MolProbity. The Clashes column lists the number of clashes within the asymmetric unit, whereas Symm-Clashes lists symmetry related clashes.

Mol	Chain	Non-H	H(model)	H(added)	Clashes	Symm-Clashes
1	A	2231	0	2218	33	0
1	B	2223	0	2213	12	0
2	A	15	0	6	0	0
2	B	15	0	6	0	0
3	A	26	0	0	0	0
3	B	26	0	0	0	0
4	A	19	0	0	1	0
4	B	17	0	0	0	0
All	All	4572	0	4443	43	0

The all-atom clashscore is defined as the number of clashes found per 1000 atoms (including hydrogen atoms). The all-atom clashscore for this structure is 5.

All (43) close contacts within the same asymmetric unit are listed below, sorted by their clash magnitude.

Atom-1	Atom-2	Interatomic distance (Å)	Clash overlap (Å)
1:A:98:ILE:CD1	1:A:139:LEU:HD12	1.92	0.98
1:A:100:VAL:HG13	1:A:132:ALA:HB1	1.46	0.96
1:A:100:VAL:HG13	1:A:132:ALA:CB	2.04	0.88
1:A:75:LEU:HD21	1:A:98:ILE:HD11	1.63	0.80
1:A:98:ILE:HD11	1:A:139:LEU:HD12	1.66	0.77
1:A:98:ILE:HD12	1:A:139:LEU:HD12	1.69	0.75
1:A:139:LEU:O	1:A:142:THR:OG1	2.06	0.72
1:A:75:LEU:CD2	1:A:98:ILE:HD11	2.21	0.70
1:A:98:ILE:CD1	1:A:139:LEU:CD1	2.69	0.70
1:B:231:TYR:OH	1:B:239:ARG:NH1	2.27	0.65
1:B:209:GLU:OE1	1:B:239:ARG:HD3	1.98	0.64
1:A:100:VAL:HG13	1:A:132:ALA:C	2.21	0.60
1:A:298:TRP:HB3	1:B:298:TRP:HB3	1.84	0.59
1:A:101:MET:O	1:A:122:PHE:HA	2.03	0.59
1:A:129:SER:O	1:A:133:VAL:HG23	2.04	0.58
1:A:100:VAL:CG1	1:A:132:ALA:HB1	2.28	0.57
1:A:75:LEU:HG	1:A:98:ILE:CG1	2.34	0.57
1:A:10:ALA:O	1:B:44:ARG:NH2	2.40	0.55
1:B:77:PRO:HA	1:B:100:VAL:HB	1.90	0.54
1:A:98:ILE:HD12	1:A:139:LEU:CD1	2.37	0.54
1:A:75:LEU:HD21	1:A:139:LEU:HB2	1.88	0.53
1:A:76:GLU:O	1:A:100:VAL:HB	2.09	0.53
1:A:77:PRO:HA	1:A:100:VAL:HB	1.90	0.53
1:A:25:ARG:NH2	4:A:503:HOH:O	2.42	0.52
1:B:194:ARG:CZ	1:B:235:ILE:HD11	2.41	0.50
1:B:76:GLU:O	1:B:100:VAL:HB	2.12	0.50

Continued on next page...

Continued from previous page...

Atom-1	Atom-2	Interatomic distance (Å)	Clash overlap (Å)
1:B:231:TYR:CZ	1:B:239:ARG:NH1	2.80	0.49
1:B:143:ASN:HB2	1:B:146:TRP:CG	2.48	0.49
1:B:231:TYR:CE2	1:B:233:PRO:HG3	2.48	0.47
1:A:100:VAL:CG1	1:A:132:ALA:C	2.83	0.47
1:A:77:PRO:HB3	1:A:133:VAL:HG22	1.97	0.46
1:A:100:VAL:CG1	1:A:132:ALA:CB	2.86	0.46
1:A:98:ILE:O	1:A:98:ILE:HG13	2.15	0.45
1:A:100:VAL:HG13	1:A:132:ALA:CA	2.46	0.45
1:A:120:ILE:O	1:A:120:ILE:HD12	2.16	0.44
1:A:123:SER:HB2	1:A:131:THR:HB	2.00	0.43
1:B:151:GLN:OE1	1:B:185:THR:HG21	2.18	0.43
1:A:79:SER:OG	1:A:101:MET:HB3	2.20	0.42
1:A:75:LEU:CG	1:A:98:ILE:HD11	2.50	0.41
1:A:103:GLU:HA	1:A:122:PHE:CD2	2.55	0.41
1:A:75:LEU:HG	1:A:98:ILE:HG13	2.02	0.40
1:A:146:TRP:N	1:A:146:TRP:CD1	2.88	0.40
1:B:79:SER:OG	1:B:101:MET:HB3	2.21	0.40

There are no symmetry-related clashes.

5.3 Torsion angles ⓘ

5.3.1 Protein backbone ⓘ

In the following table, the Percentiles column shows the percent Ramachandran outliers of the chain as a percentile score with respect to all X-ray entries followed by that with respect to entries of similar resolution.

The Analysed column shows the number of residues for which the backbone conformation was analysed, and the total number of residues.

Mol	Chain	Analysed	Favoured	Allowed	Outliers	Percentiles	
1	A	291/326 (89%)	279 (96%)	12 (4%)	0	100	100
1	B	290/326 (89%)	278 (96%)	12 (4%)	0	100	100
All	All	581/652 (89%)	557 (96%)	24 (4%)	0	100	100

There are no Ramachandran outliers to report.

5.3.2 Protein sidechains [i](#)

In the following table, the Percentiles column shows the percent sidechain outliers of the chain as a percentile score with respect to all X-ray entries followed by that with respect to entries of similar resolution.

The Analysed column shows the number of residues for which the sidechain conformation was analysed, and the total number of residues.

Mol	Chain	Analysed	Rotameric	Outliers	Percentiles	
1	A	226/244 (93%)	222 (98%)	4 (2%)	64	87
1	B	224/244 (92%)	216 (96%)	8 (4%)	40	70
All	All	450/488 (92%)	438 (97%)	12 (3%)	50	80

All (12) residues with a non-rotameric sidechain are listed below:

Mol	Chain	Res	Type
1	A	6	SER
1	A	49	SER
1	A	79	SER
1	A	241	SER
1	B	6	SER
1	B	44	ARG
1	B	49	SER
1	B	79	SER
1	B	98	ILE
1	B	151	GLN
1	B	241	SER
1	B	314	GLU

Some sidechains can be flipped to improve hydrogen bonding and reduce clashes. All (1) such sidechains are listed below:

Mol	Chain	Res	Type
1	A	111	GLN

5.3.3 RNA [i](#)

There are no RNA molecules in this entry.

5.4 Non-standard residues in protein, DNA, RNA chains [i](#)

There are no non-standard protein/DNA/RNA residues in this entry.

5.5 Carbohydrates [i](#)

There are no carbohydrates in this entry.

5.6 Ligand geometry [i](#)

4 ligands are modelled in this entry.

In the following table, the Counts columns list the number of bonds (or angles) for which Mogul statistics could be retrieved, the number of bonds (or angles) that are observed in the model and the number of bonds (or angles) that are defined in the chemical component dictionary. The Link column lists molecule types, if any, to which the group is linked. The Z score for a bond length (or angle) is the number of standard deviations the observed value is removed from the expected value. A bond length (or angle) with $|Z| > 2$ is considered an outlier worth inspection. RMSZ is the root-mean-square of all Z scores of the bond lengths (or angles).

Mol	Type	Chain	Res	Link	Bond lengths			Bond angles		
					Counts	RMSZ	# $ Z > 2$	Counts	RMSZ	# $ Z > 2$
2	PLP	A	401	1	15,15,16	3.37	3 (20%)	20,22,23	1.18	2 (10%)
3	6EQ	A	402	-	25,28,28	1.11	1 (4%)	34,38,38	1.76	10 (29%)
2	PLP	B	401	1	15,15,16	3.25	3 (20%)	20,22,23	1.25	2 (10%)
3	6EQ	B	402	-	25,28,28	1.39	3 (12%)	34,38,38	1.26	4 (11%)

In the following table, the Chirals column lists the number of chiral outliers, the number of chiral centers analysed, the number of these observed in the model and the number defined in the chemical component dictionary. Similar counts are reported in the Torsion and Rings columns. '-' means no outliers of that kind were identified.

Mol	Type	Chain	Res	Link	Chirals	Torsions	Rings
2	PLP	A	401	1	-	0/6/6/8	0/1/1/1
3	6EQ	A	402	-	-	0/12/16/16	0/3/3/3
2	PLP	B	401	1	-	0/6/6/8	0/1/1/1
3	6EQ	B	402	-	-	0/12/16/16	0/3/3/3

All (10) bond length outliers are listed below:

Mol	Chain	Res	Type	Atoms	Z	Observed(Å)	Ideal(Å)
3	B	402	6EQ	CAU-NAQ	-3.95	1.33	1.41
3	B	402	6EQ	CAV-NAR	-3.16	1.35	1.41
3	B	402	6EQ	CAY-CAX	-2.70	1.42	1.49
3	A	402	6EQ	CAY-CAX	-2.46	1.42	1.49
2	A	401	PLP	C3-C4	3.07	1.46	1.40
2	B	401	PLP	C3-C4	3.27	1.47	1.40

Continued on next page...

Continued from previous page...

Mol	Chain	Res	Type	Atoms	Z	Observed(Å)	Ideal(Å)
2	B	401	PLP	C5-C4	6.08	1.47	1.40
2	A	401	PLP	C5-C4	6.94	1.48	1.40
2	B	401	PLP	C3-C2	10.26	1.47	1.40
2	A	401	PLP	C3-C2	10.40	1.48	1.40

All (18) bond angle outliers are listed below:

Mol	Chain	Res	Type	Atoms	Z	Observed(°)	Ideal(°)
3	A	402	6EQ	CAM-CAV-CAO	-3.99	114.97	119.66
3	A	402	6EQ	CAI-CAU-CAP	-3.42	115.65	119.66
3	B	402	6EQ	CAM-CAV-CAO	-2.23	117.05	119.66
3	B	402	6EQ	CAM-CAV-NAR	-2.02	113.63	120.41
2	B	401	PLP	O4P-C5A-C5	2.03	113.41	109.32
2	A	401	PLP	O3-C3-C2	2.08	122.13	117.78
3	A	402	6EQ	CAE-CAG-CAK	2.11	123.11	120.21
3	A	402	6EQ	CAI-CAU-NAQ	2.19	127.75	120.41
2	B	401	PLP	O3P-P-O2P	2.25	116.70	107.61
3	A	402	6EQ	CAN-CAM-CAV	2.29	122.98	120.30
2	A	401	PLP	C6-N1-C2	2.42	123.92	119.26
3	A	402	6EQ	CAI-CAH-CAL	2.44	123.66	120.24
3	A	402	6EQ	CAO-CAV-NAR	2.56	128.39	120.16
3	B	402	6EQ	CAO-CAV-NAR	2.84	129.29	120.16
3	A	402	6EQ	CAF-CAJ-CAX	3.04	124.42	120.57
3	A	402	6EQ	CAY-CAP-CAU	3.05	126.81	121.28
3	B	402	6EQ	CAN-CAM-CAV	3.28	124.14	120.30
3	A	402	6EQ	CAV-CAO-CAW	3.44	122.27	120.04

There are no chirality outliers.

There are no torsion outliers.

There are no ring outliers.

No monomer is involved in short contacts.

5.7 Other polymers [i](#)

There are no such residues in this entry.

5.8 Polymer linkage issues [i](#)

There are no chain breaks in this entry.

6 Fit of model and data

6.1 Protein, DNA and RNA chains

In the following table, the column labelled ‘#RSRZ > 2’ contains the number (and percentage) of RSRZ outliers, followed by percent RSRZ outliers for the chain as percentile scores relative to all X-ray entries and entries of similar resolution. The OWAB column contains the minimum, median, 95th percentile and maximum values of the occupancy-weighted average B-factor per residue. The column labelled ‘Q < 0.9’ lists the number of (and percentage) of residues with an average occupancy less than 0.9.

Mol	Chain	Analysed	<RSRZ>	#RSRZ>2	OWAB(Å ²)	Q<0.9
1	A	297/326 (91%)	0.17	25 (8%) 12 9	28, 50, 104, 135	1 (0%)
1	B	295/326 (90%)	0.08	15 (5%) 29 27	29, 53, 98, 123	1 (0%)
All	All	592/652 (90%)	0.13	40 (6%) 18 16	28, 52, 101, 135	2 (0%)

All (40) RSRZ outliers are listed below:

Mol	Chain	Res	Type	RSRZ
1	A	132	ALA	10.4
1	A	101	MET	7.9
1	A	136	ALA	7.6
1	A	139	LEU	7.0
1	A	100	VAL	6.4
1	A	77	PRO	6.0
1	A	123	SER	5.2
1	A	318	GLU	5.0
1	B	104	ASN	4.9
1	A	140	ALA	4.6
1	B	141	ALA	4.5
1	A	131	THR	4.5
1	B	317	LEU	4.3
1	B	230	LEU	4.3
1	A	150	TYR	4.1
1	A	102	PRO	4.1
1	B	133	VAL	3.6
1	A	135	THR	3.6
1	A	228	PRO	3.3
1	B	150	TYR	3.3
1	B	225	GLY	3.2
1	B	226	PHE	3.0
1	A	212	TYR	2.9
1	A	75	LEU	2.9

Continued on next page...

Continued from previous page...

Mol	Chain	Res	Type	RSRZ
1	A	30	ARG	2.8
1	A	120	ILE	2.7
1	B	200	VAL	2.5
1	A	121	ILE	2.4
1	A	138	GLU	2.4
1	B	108	GLU	2.4
1	B	140	ALA	2.4
1	B	121	ILE	2.3
1	B	149	LEU	2.2
1	A	104	ASN	2.2
1	A	149	LEU	2.2
1	B	142	THR	2.2
1	A	122	PHE	2.1
1	A	133	VAL	2.1
1	B	194	ARG	2.1
1	A	31	ASP	2.1

6.2 Non-standard residues in protein, DNA, RNA chains [i](#)

There are no non-standard protein/DNA/RNA residues in this entry.

6.3 Carbohydrates [i](#)

There are no carbohydrates in this entry.

6.4 Ligands [i](#)

In the following table, the Atoms column lists the number of modelled atoms in the group and the number defined in the chemical component dictionary. LLDF column lists the quality of electron density of the group with respect to its neighbouring residues in protein, DNA or RNA chains. The B-factors column lists the minimum, median, 95th percentile and maximum values of B factors of atoms in the group. The column labelled 'Q < 0.9' lists the number of atoms with occupancy less than 0.9.

Mol	Type	Chain	Res	Atoms	RSCC	RSR	LLDF	B-factors(Å ²)	Q<0.9
2	PLP	A	401	15/16	0.98	0.17	0.54	33,34,37,40	0
3	6EQ	B	402	26/26	0.96	0.18	0.20	34,40,48,49	0
3	6EQ	A	402	26/26	0.96	0.18	0.14	33,38,46,47	0
2	PLP	B	401	15/16	0.99	0.12	-1.16	28,32,33,36	0

6.5 Other polymers [i](#)

There are no such residues in this entry.