



wwPDB X-ray Structure Validation Summary Report ⓘ

Feb 15, 2017 – 01:18 am GMT

PDB ID : 4IY7
Title : crystal structure of cystathionine gamma lyase (XometC) from Xanthomonas oryzae pv. oryzae in complex with E-site serine, A-site external aldimine structure with serine and A-site external aldimine structure with aminoacrylate intermediates
Authors : Ngo, H.P.T.; Kim, J.K.; Kang, L.W.
Deposited on : 2013-01-28
Resolution : 1.70 Å(reported)

This is a wwPDB X-ray Structure Validation Summary Report for a publicly released PDB entry.

We welcome your comments at validation@mail.wwpdb.org

A user guide is available at

<http://wwpdb.org/validation/2016/XrayValidationReportHelp>

with specific help available everywhere you see the ⓘ symbol.

The following versions of software and data (see [references ⓘ](#)) were used in the production of this report:

MolProbity : 4.02b-467
Mogul : 1.7.2 (RC1), CSD as538be (2017)
Xtriage (Phenix) : 1.9-1692
EDS : trunk28620
Percentile statistics : 20161228.v01 (using entries in the PDB archive December 28th 2016)
Refmac : 5.8.0135
CCP4 : 6.5.0
Ideal geometry (proteins) : Engh & Huber (2001)
Ideal geometry (DNA, RNA) : Parkinson et al. (1996)
Validation Pipeline (wwPDB-VP) : recalc28949

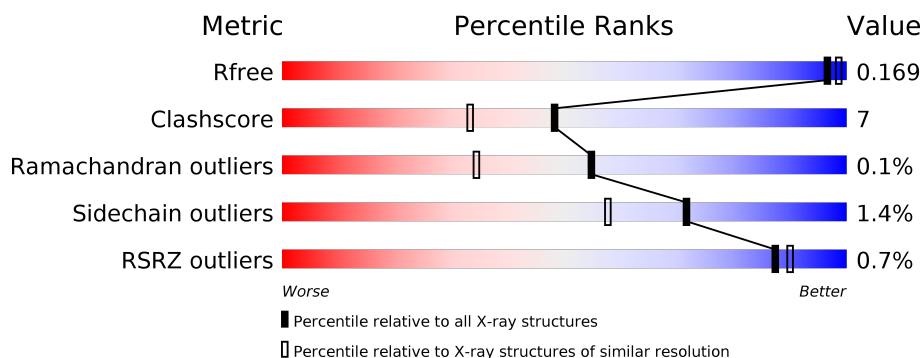
1 Overall quality at a glance ⓘ

The following experimental techniques were used to determine the structure:

X-RAY DIFFRACTION

The reported resolution of this entry is 1.70 Å.

Percentile scores (ranging between 0-100) for global validation metrics of the entry are shown in the following graphic. The table shows the number of entries on which the scores are based.



Metric	Whole archive (#Entries)	Similar resolution (#Entries, resolution range(Å))
R_{free}	100719	3453 (1.70-1.70)
Clashscore	112137	3876 (1.70-1.70)
Ramachandran outliers	110173	3815 (1.70-1.70)
Sidechain outliers	110143	3815 (1.70-1.70)
RSRZ outliers	101464	3491 (1.70-1.70)

The table below summarises the geometric issues observed across the polymeric chains and their fit to the electron density. The red, orange, yellow and green segments on the lower bar indicate the fraction of residues that contain outliers for ≥ 3 , 2, 1 and 0 types of geometric quality criteria. A grey segment represents the fraction of residues that are not modelled. The numeric value for each fraction is indicated below the corresponding segment, with a dot representing fractions $\leq 5\%$. The upper red bar (where present) indicates the fraction of residues that have poor fit to the electron density. The numeric value is given above the bar.

Mol	Chain	Length	Quality of chain
1	A	397	<div> <div>%</div> <div> <div></div> <div>79%</div> <div>15%</div> <div>••</div> </div> </div>
1	B	397	<div> <div></div> <div>82%</div> <div>13%</div> <div>••</div> </div>
1	C	397	<div> <div>%</div> <div> <div></div> <div>83%</div> <div>13%</div> <div>•</div> </div> </div>
1	D	397	<div> <div>%</div> <div> <div></div> <div>84%</div> <div>12%</div> <div>••</div> </div> </div>

The following table lists non-polymeric compounds, carbohydrate monomers and non-standard residues in protein, DNA, RNA chains that are outliers for geometric or electron-density-fit crite-

ria:

Mol	Type	Chain	Res	Chirality	Geometry	Clashes	Electron density
2	SER	A	401	-	-	-	X
4	SO4	A	404	-	-	-	X
6	PYR	B	402	-	-	X	X
6	PYR	D	402	-	-	-	X
7	KOU	B	403	-	-	X	-
7	KOU	C	402	-	-	X	-
7	KOU	D	403	-	-	X	-

2 Entry composition [i](#)

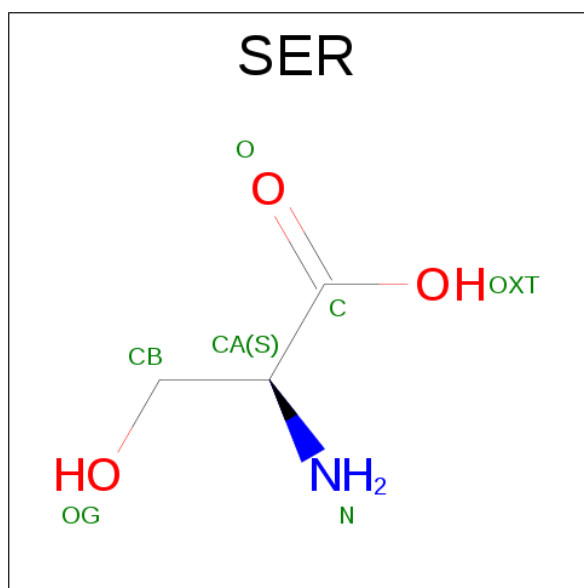
There are 8 unique types of molecules in this entry. The entry contains 13157 atoms, of which 0 are hydrogens and 0 are deuteriums.

In the tables below, the ZeroOcc column contains the number of atoms modelled with zero occupancy, the AltConf column contains the number of residues with at least one atom in alternate conformation and the Trace column contains the number of residues modelled with at most 2 atoms.

- Molecule 1 is a protein called Cystathionine gamma-lyase-like protein.

Mol	Chain	Residues	Atoms					ZeroOcc	AltConf	Trace
1	A	381	Total	C	N	O	S	0	6	0
			2889	1830	509	535	15			
1	B	381	Total	C	N	O	S	0	7	0
			2892	1832	509	536	15			
1	C	381	Total	C	N	O	S	0	5	0
			2886	1828	509	534	15			
1	D	383	Total	C	N	O	S	0	8	0
			2918	1849	515	539	15			

- Molecule 2 is SERINE (three-letter code: SER) (formula: C₃H₇NO₃).



Mol	Chain	Residues	Atoms				ZeroOcc	AltConf
2	A	1	Total	C	N	O	0	0
			7	3	1	3		
2	B	1	Total	C	N	O	0	0
			7	3	1	3		

Continued on next page...

Continued from previous page...

Mol	Chain	Residues	Atoms				ZeroOcc	AltConf
2	C	1	Total	C	N	O	0	0
			7	3	1	3		
2	D	1	Total	C	N	O	0	0
			7	3	1	3		

- Molecule 3 is GLYCEROL (three-letter code: GOL) (formula: $C_3H_8O_3$).



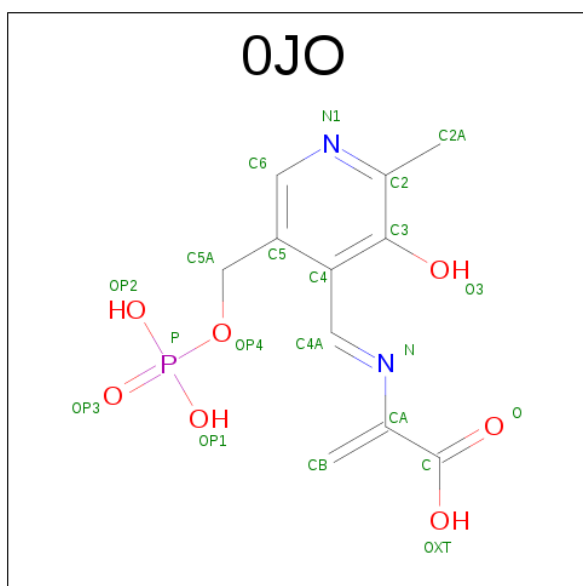
Mol	Chain	Residues	Atoms			ZeroOcc	AltConf
3	A	1	Total	C	O	0	0
			6	3	3		
3	A	1	Total	C	O	0	0
			6	3	3		

- Molecule 4 is SULFATE ION (three-letter code: SO4) (formula: O_4S).



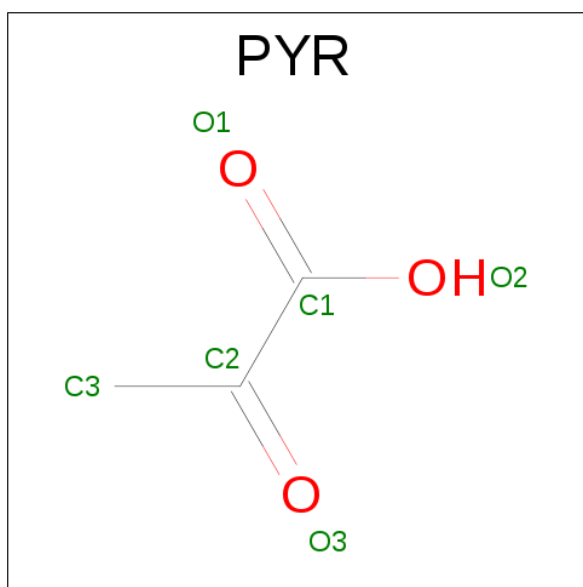
Mol	Chain	Residues	Atoms			ZeroOcc	AltConf
4	A	1	Total	O	S	0	0
			5	4	1		

- Molecule 5 is 2-[[[(E)-{3-HYDROXY-2-METHYL-5-[(PHOSPHONOOXY)METHYL]PYRIDIN-4-YL}METHYLIDENE]AMINO}PROP-2-ENOIC ACID (three-letter code: 0JO) (formula: C₁₁H₁₃N₂O₇P).



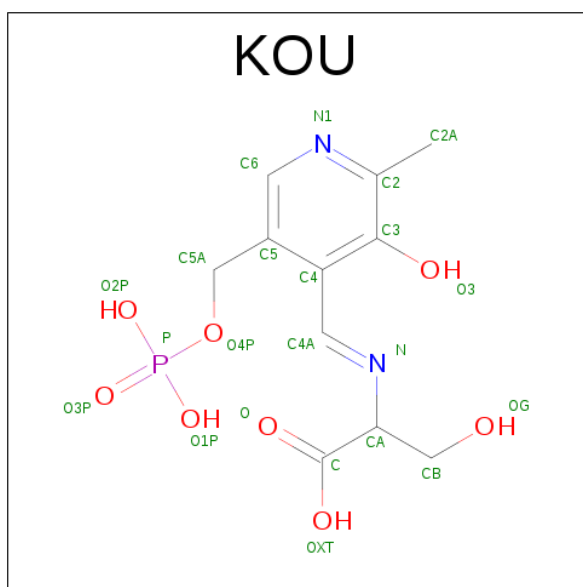
Mol	Chain	Residues	Atoms				ZeroOcc	AltConf
5	A	1	Total	C	N	O	P	
			21	11	2	7	1	0

- Molecule 6 is PYRUVIC ACID (three-letter code: PYR) (formula: C₃H₄O₃).



Mol	Chain	Residues	Atoms			ZeroOcc	AltConf
6	B	1	Total	C	O	0	0
			6	3	3		
6	D	1	Total	C	O	0	0
			6	3	3		

- Molecule 7 is (E)-N-({3-HYDROXY-2-METHYL-5-[(PHOSPHONOOXY)METHYL]PYRIDIN-4-YL}METHYLIDENE)-L-SERINE (three-letter code: KOU) (formula: $C_{11}H_{15}N_2O_8P$).



Mol	Chain	Residues	Atoms					ZeroOcc	AltConf
7	B	1	Total	C	N	O	P	0	0
			22	11	2	8	1		

Continued on next page...

Continued from previous page...

Mol	Chain	Residues	Atoms					ZeroOcc	AltConf
7	C	1	Total	C	N	O	P	0	0
			22	11	2	8	1		
7	D	1	Total	C	N	O	P	0	0
			22	11	2	8	1		

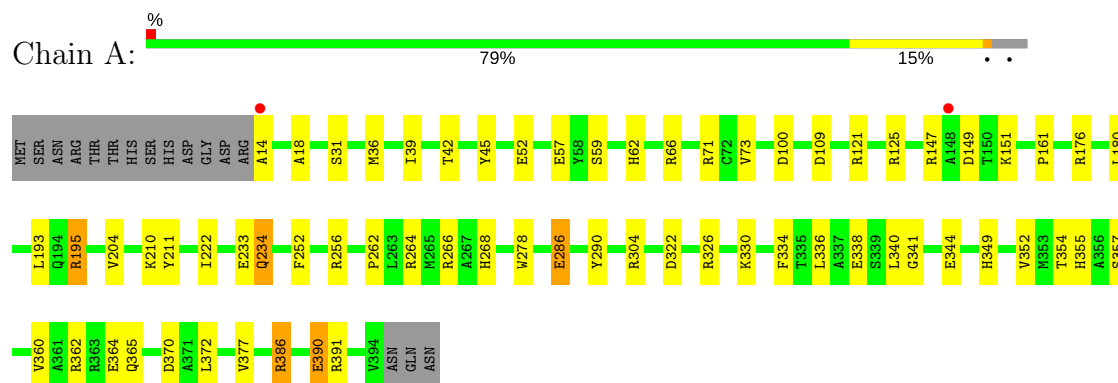
- Molecule 8 is water.

Mol	Chain	Residues	Atoms		ZeroOcc	AltConf
8	A	346	Total	O	0	0
			346	346		
8	B	389	Total	O	0	0
			389	389		
8	C	332	Total	O	0	0
			332	332		
8	D	361	Total	O	0	0
			361	361		

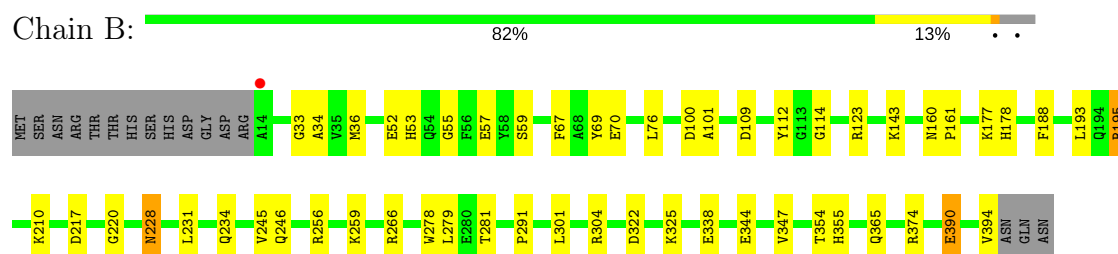
3 Residue-property plots

These plots are drawn for all protein, RNA and DNA chains in the entry. The first graphic for a chain summarises the proportions of the various outlier classes displayed in the second graphic. The second graphic shows the sequence view annotated by issues in geometry and electron density. Residues are color-coded according to the number of geometric quality criteria for which they contain at least one outlier: green = 0, yellow = 1, orange = 2 and red = 3 or more. A red dot above a residue indicates a poor fit to the electron density ($RSRZ > 2$). Stretches of 2 or more consecutive residues without any outlier are shown as a green connector. Residues present in the sample, but not in the model, are shown in grey.

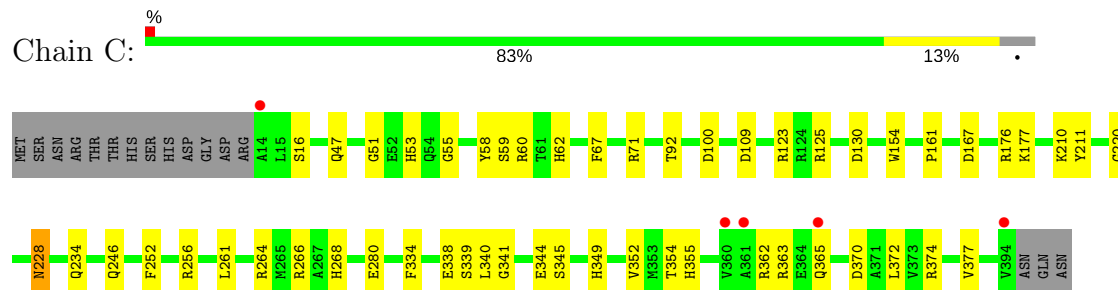
- Molecule 1: Cystathionine gamma-lyase-like protein



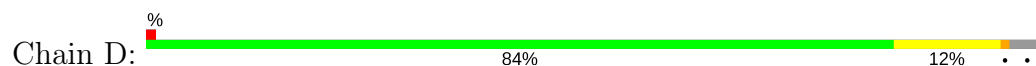
- Molecule 1: Cystathionine gamma-lyase-like protein

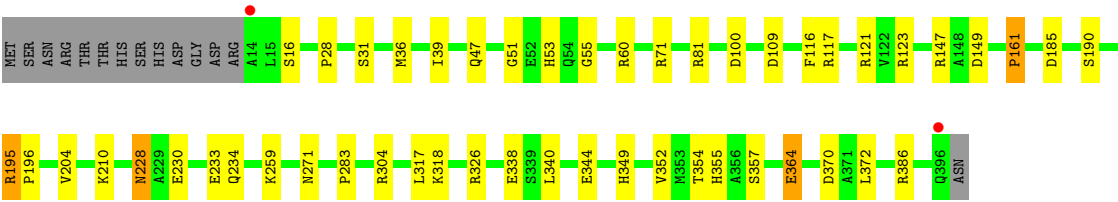


- Molecule 1: Cystathionine gamma-lyase-like protein



- Molecule 1: Cystathionine gamma-lyase-like protein





4 Data and refinement statistics

Property	Value	Source
Space group	P 21 21 21	Depositor
Cell constants a, b, c, α , β , γ	76.22Å 86.07Å 226.00Å 90.00° 90.00° 90.00°	Depositor
Resolution (Å)	30.23 – 1.70 30.23 – 1.70	Depositor EDS
% Data completeness (in resolution range)	100.0 (30.23-1.70) 100.0 (30.23-1.70)	Depositor EDS
R_{merge}	(Not available)	Depositor
R_{sym}	(Not available)	Depositor
$\langle I/\sigma(I) \rangle$ ¹	3.71 (at 1.70Å)	Xtriage
Refinement program	REFMAC 5.5.0110	Depositor
R, R_{free}	0.134 , 0.169 0.134 , 0.169	Depositor DCC
R_{free} test set	8207 reflections (5.28%)	DCC
Wilson B-factor (Å ²)	13.6	Xtriage
Anisotropy	0.041	Xtriage
Bulk solvent k_{sol} (e/Å ³), B_{sol} (Å ²)	0.37 , 45.7	EDS
L-test for twinning ²	$\langle L \rangle = 0.49$, $\langle L^2 \rangle = 0.32$	Xtriage
Estimated twinning fraction	No twinning to report.	Xtriage
F_o, F_c correlation	0.97	EDS
Total number of atoms	13157	wwPDB-VP
Average B, all atoms (Å ²)	15.0	wwPDB-VP

Xtriage's analysis on translational NCS is as follows: *The largest off-origin peak in the Patterson function is 3.37% of the height of the origin peak. No significant pseudotranslation is detected.*

¹Intensities estimated from amplitudes.

²Theoretical values of $\langle |L| \rangle$, $\langle L^2 \rangle$ for acentric reflections are 0.5, 0.333 respectively for untwinned datasets, and 0.375, 0.2 for perfectly twinned datasets.

5 Model quality [i](#)

5.1 Standard geometry [i](#)

Bond lengths and bond angles in the following residue types are not validated in this section: GOL, OJO, KOU, PYR, SO4

The Z score for a bond length (or angle) is the number of standard deviations the observed value is removed from the expected value. A bond length (or angle) with $|Z| > 5$ is considered an outlier worth inspection. RMSZ is the root-mean-square of all Z scores of the bond lengths (or angles).

Mol	Chain	Bond lengths		Bond angles	
		RMSZ	$\# Z > 5$	RMSZ	$\# Z > 5$
1	A	1.41	16/2965 (0.5%)	1.26	26/4022 (0.6%)
1	B	1.41	13/2971 (0.4%)	1.21	19/4030 (0.5%)
1	C	1.39	5/2959 (0.2%)	1.17	19/4014 (0.5%)
1	D	1.39	9/3000 (0.3%)	1.20	16/4067 (0.4%)
All	All	1.40	43/11895 (0.4%)	1.21	80/16133 (0.5%)

The worst 5 of 43 bond length outliers are listed below:

Mol	Chain	Res	Type	Atoms	Z	Observed(Å)	Ideal(Å)
1	B	338	GLU	CD-OE2	-11.75	1.12	1.25
1	A	233	GLU	CG-CD	9.78	1.66	1.51
1	D	338	GLU	CD-OE1	-8.94	1.15	1.25
1	A	57	GLU	CD-OE1	8.39	1.34	1.25
1	A	344	GLU	CG-CD	7.68	1.63	1.51

The worst 5 of 80 bond angle outliers are listed below:

Mol	Chain	Res	Type	Atoms	Z	Observed(°)	Ideal(°)
1	B	304	ARG	NE-CZ-NH2	-10.25	115.18	120.30
1	A	66	ARG	NE-CZ-NH2	-10.17	115.22	120.30
1	A	109	ASP	CB-CG-OD1	9.90	127.21	118.30
1	A	121	ARG	NE-CZ-NH1	9.58	125.09	120.30
1	C	109	ASP	CB-CG-OD1	9.54	126.89	118.30

There are no chirality outliers.

There are no planarity outliers.

5.2 Too-close contacts ⓘ

In the following table, the Non-H and H(model) columns list the number of non-hydrogen atoms and hydrogen atoms in the chain respectively. The H(added) column lists the number of hydrogen atoms added and optimized by MolProbity. The Clashes column lists the number of clashes within the asymmetric unit, whereas Symm-Clashes lists symmetry related clashes.

Mol	Chain	Non-H	H(model)	H(added)	Clashes	Symm-Clashes
1	A	2889	0	2919	40	0
1	B	2892	0	2924	52	0
1	C	2886	0	2914	33	0
1	D	2918	0	2959	38	0
2	A	7	0	4	0	0
2	B	7	0	4	0	0
2	C	7	0	4	0	0
2	D	7	0	4	0	0
3	A	12	0	16	0	0
4	A	5	0	0	0	0
5	A	21	0	9	3	0
6	B	6	0	3	5	0
6	D	6	0	3	3	0
7	B	22	0	11	11	0
7	C	22	0	11	12	0
7	D	22	0	12	13	0
8	A	346	0	0	14	0
8	B	389	0	0	13	0
8	C	332	0	0	8	0
8	D	361	0	0	12	0
All	All	13157	0	11797	162	0

The all-atom clashscore is defined as the number of clashes found per 1000 atoms (including hydrogen atoms). The all-atom clashscore for this structure is 7.

The worst 5 of 162 close contacts within the same asymmetric unit are listed below, sorted by their clash magnitude.

Atom-1	Atom-2	Interatomic distance (Å)	Clash overlap (Å)
1:B:210[A]:LYS:NZ	7:B:403:KOU:C4A	2.20	1.05
1:C:210[A]:LYS:HZ1	7:C:402:KOU:C4A	1.75	0.98
1:C:210[B]:LYS:HZ1	7:C:402:KOU:HA	1.29	0.97
1:D:304:ARG:NH1	8:D:794:HOH:O	1.98	0.95
1:B:53:HIS:HD2	1:B:55:GLY:H	1.11	0.95

There are no symmetry-related clashes.

5.3 Torsion angles

5.3.1 Protein backbone

In the following table, the Percentiles column shows the percent Ramachandran outliers of the chain as a percentile score with respect to all X-ray entries followed by that with respect to entries of similar resolution.

The Analysed column shows the number of residues for which the backbone conformation was analysed, and the total number of residues.

Mol	Chain	Analysed	Favoured	Allowed	Outliers	Percentiles	
1	A	385/397 (97%)	376 (98%)	9 (2%)	0	100	100
1	B	386/397 (97%)	376 (97%)	10 (3%)	0	100	100
1	C	384/397 (97%)	373 (97%)	10 (3%)	1 (0%)	44	25
1	D	389/397 (98%)	380 (98%)	9 (2%)	0	100	100
All	All	1544/1588 (97%)	1505 (98%)	38 (2%)	1 (0%)	55	34

All (1) Ramachandran outliers are listed below:

Mol	Chain	Res	Type
1	C	339	SER

5.3.2 Protein sidechains

In the following table, the Percentiles column shows the percent sidechain outliers of the chain as a percentile score with respect to all X-ray entries followed by that with respect to entries of similar resolution.

The Analysed column shows the number of residues for which the sidechain conformation was analysed, and the total number of residues.

Mol	Chain	Analysed	Rotameric	Outliers	Percentiles	
1	A	304/313 (97%)	298 (98%)	6 (2%)	60	42
1	B	305/313 (97%)	302 (99%)	3 (1%)	80	71
1	C	303/313 (97%)	300 (99%)	3 (1%)	80	71
1	D	308/313 (98%)	302 (98%)	6 (2%)	62	45
All	All	1220/1252 (97%)	1202 (98%)	18 (2%)	71	55

5 of 18 residues with a non-rotameric sidechain are listed below:

Mol	Chain	Res	Type
1	B	365	GLN
1	C	228	ASN
1	D	161	PRO
1	B	228	ASN
1	B	291	PRO

Some sidechains can be flipped to improve hydrogen bonding and reduce clashes. 5 of 33 such sidechains are listed below:

Mol	Chain	Res	Type
1	B	365	GLN
1	C	239	GLN
1	D	349	HIS
1	C	47	GLN
1	C	53	HIS

5.3.3 RNA [i](#)

There are no RNA molecules in this entry.

5.4 Non-standard residues in protein, DNA, RNA chains [i](#)

There are no non-standard protein/DNA/RNA residues in this entry.

5.5 Carbohydrates [i](#)

There are no carbohydrates in this entry.

5.6 Ligand geometry [i](#)

13 ligands are modelled in this entry.

In the following table, the Counts columns list the number of bonds (or angles) for which Mogul statistics could be retrieved, the number of bonds (or angles) that are observed in the model and the number of bonds (or angles) that are defined in the chemical component dictionary. The Link column lists molecule types, if any, to which the group is linked. The Z score for a bond length (or angle) is the number of standard deviations the observed value is removed from the expected value. A bond length (or angle) with $|Z| > 2$ is considered an outlier worth inspection. RMSZ is the root-mean-square of all Z scores of the bond lengths (or angles).

Mol	Type	Chain	Res	Link	Bond lengths			Bond angles		
					Counts	RMSZ	# Z > 2	Counts	RMSZ	# Z > 2
2	SER	A	401	-	2,6,6	1.18	0	1,7,7	0.96	0
3	GOL	A	402	-	5,5,5	0.77	0	5,5,5	0.41	0
3	GOL	A	403	-	5,5,5	0.89	0	5,5,5	1.78	1 (20%)
4	SO4	A	404	-	4,4,4	0.32	0	6,6,6	0.47	0
5	OJO	A	405	-	18,21,21	3.09	5 (27%)	23,30,30	1.73	5 (21%)
2	SER	B	401	-	2,6,6	0.49	0	1,7,7	0.05	0
6	PYR	B	402	-	2,5,5	3.21	2 (100%)	2,6,6	2.41	1 (50%)
7	KOU	B	403	-	19,22,22	2.68	5 (26%)	23,31,31	1.72	4 (17%)
2	SER	C	401	-	2,6,6	1.01	0	1,7,7	0.64	0
7	KOU	C	402	-	19,22,22	2.92	8 (42%)	23,31,31	2.56	7 (30%)
2	SER	D	401	-	2,6,6	0.70	0	1,7,7	1.11	0
6	PYR	D	402	-	2,5,5	1.83	1 (50%)	2,6,6	1.12	0
7	KOU	D	403	-	19,22,22	3.08	6 (31%)	23,31,31	2.91	6 (26%)

In the following table, the Chirals column lists the number of chiral outliers, the number of chiral centers analysed, the number of these observed in the model and the number defined in the chemical component dictionary. Similar counts are reported in the Torsion and Rings columns. '-' means no outliers of that kind were identified.

Mol	Type	Chain	Res	Link	Chirals	Torsions	Rings
2	SER	A	401	-	-	0/2/6/6	0/0/0/0
3	GOL	A	402	-	-	0/4/4/4	0/0/0/0
3	GOL	A	403	-	-	0/4/4/4	0/0/0/0
4	SO4	A	404	-	-	0/0/0/0	0/0/0/0
5	OJO	A	405	-	-	0/8/15/15	0/1/1/1
2	SER	B	401	-	-	0/2/6/6	0/0/0/0
6	PYR	B	402	-	-	0/0/4/4	0/0/0/0
7	KOU	B	403	-	-	0/13/17/17	0/1/1/1
2	SER	C	401	-	-	0/2/6/6	0/0/0/0
7	KOU	C	402	-	-	0/13/17/17	0/1/1/1
2	SER	D	401	-	-	0/2/6/6	0/0/0/0
6	PYR	D	402	-	-	0/0/4/4	0/0/0/0
7	KOU	D	403	-	-	0/13/17/17	0/1/1/1

The worst 5 of 27 bond length outliers are listed below:

Mol	Chain	Res	Type	Atoms	Z	Observed(Å)	Ideal(Å)
6	B	402	PYR	C3-C2	-2.21	1.42	1.49
7	C	402	KOU	P-O2P	-2.05	1.46	1.54
7	C	402	KOU	C2A-C2	2.03	1.54	1.50
7	C	402	KOU	C5A-C5	2.10	1.56	1.50

Continued on next page...

Continued from previous page...

Mol	Chain	Res	Type	Atoms	Z	Observed(Å)	Ideal(Å)
7	D	403	KOU	C2A-C2	2.16	1.54	1.50

The worst 5 of 24 bond angle outliers are listed below:

Mol	Chain	Res	Type	Atoms	Z	Observed(°)	Ideal(°)
7	D	403	KOU	C3-C4-C5	-6.32	113.43	118.24
7	B	403	KOU	C3-C4-C5	-5.46	114.09	118.24
7	D	403	KOU	C2A-C2-C3	-5.35	114.58	120.96
5	A	405	OJO	C3-C4-C5	-4.70	114.66	118.24
3	A	403	GOL	C3-C2-C1	-3.74	96.66	111.52

There are no chirality outliers.

There are no torsion outliers.

There are no ring outliers.

6 monomers are involved in 47 short contacts:

Mol	Chain	Res	Type	Clashes	Symm-Clashes
5	A	405	OJO	3	0
6	B	402	PYR	5	0
7	B	403	KOU	11	0
7	C	402	KOU	12	0
6	D	402	PYR	3	0
7	D	403	KOU	13	0

5.7 Other polymers [i](#)

There are no such residues in this entry.

5.8 Polymer linkage issues [i](#)

There are no chain breaks in this entry.

6 Fit of model and data [i](#)

6.1 Protein, DNA and RNA chains [i](#)

In the following table, the column labelled ‘#RSRZ> 2’ contains the number (and percentage) of RSRZ outliers, followed by percent RSRZ outliers for the chain as percentile scores relative to all X-ray entries and entries of similar resolution. The OWAB column contains the minimum, median, 95th percentile and maximum values of the occupancy-weighted average B-factor per residue. The column labelled ‘Q< 0.9’ lists the number of (and percentage) of residues with an average occupancy less than 0.9.

Mol	Chain	Analysed	<RSRZ>	#RSRZ>2	OWAB(Å ²)	Q<0.9
1	A	381/397 (95%)	-0.52	2 (0%) 90 93	7, 12, 24, 35	0
1	B	381/397 (95%)	-0.58	1 (0%) 93 94	7, 11, 22, 33	0
1	C	381/397 (95%)	-0.32	5 (1%) 77 82	7, 14, 28, 36	0
1	D	383/397 (96%)	-0.50	2 (0%) 90 93	8, 12, 23, 39	0
All	All	1526/1588 (96%)	-0.48	10 (0%) 87 90	7, 12, 25, 39	0

The worst 5 of 10 RSRZ outliers are listed below:

Mol	Chain	Res	Type	RSRZ
1	B	14	ALA	5.3
1	A	14	ALA	4.4
1	C	394	VAL	4.2
1	D	14	ALA	4.0
1	C	14	ALA	3.4

6.2 Non-standard residues in protein, DNA, RNA chains [i](#)

There are no non-standard protein/DNA/RNA residues in this entry.

6.3 Carbohydrates [i](#)

There are no carbohydrates in this entry.

6.4 Ligands [i](#)

In the following table, the Atoms column lists the number of modelled atoms in the group and the number defined in the chemical component dictionary. LLDF column lists the quality of electron density of the group with respect to its neighbouring residues in protein, DNA or RNA chains. The B-factors column lists the minimum, median, 95th percentile and maximum values of B factors

of atoms in the group. The column labelled 'Q< 0.9' lists the number of atoms with occupancy less than 0.9.

Mol	Type	Chain	Res	Atoms	RSCC	RSR	LLDF	B-factors(\AA^2)	Q<0.9
6	PYR	D	402	6/6	0.85	0.21	6.22	25,28,32,34	0
6	PYR	B	402	6/6	0.90	0.15	5.30	13,25,31,35	0
4	SO4	A	404	5/5	0.98	0.18	3.44	30,38,42,46	0
2	SER	A	401	7/7	0.95	0.09	2.26	19,22,23,26	0
3	GOL	A	403	6/6	0.86	0.11	1.67	28,33,35,39	0
7	KOU	C	402	22/22	0.98	0.10	0.01	8,17,25,33	0
3	GOL	A	402	6/6	0.97	0.06	-0.03	13,14,17,17	0
7	KOU	D	403	22/22	0.98	0.09	-0.16	9,14,19,29	0
2	SER	C	401	7/7	0.95	0.07	-0.17	18,20,21,24	0
7	KOU	B	403	22/22	0.98	0.08	-0.60	9,13,20,29	0
5	OJO	A	405	21/21	0.98	0.07	-0.67	7,12,18,20	0
2	SER	D	401	7/7	0.97	0.06	-0.81	17,19,21,21	0
2	SER	B	401	7/7	0.97	0.05	-0.94	14,16,17,21	0

6.5 Other polymers [i](#)

There are no such residues in this entry.