



# Full wwPDB X-ray Structure Validation Report ⓘ

Jun 29, 2017 – 09:24 AM EDT

PDB ID : 2J09  
Title : Thermus DNA photolyase with FMN antenna chromophore  
Authors : Klar, T.; Kaiser, G.; Hennecke, U.; Carell, T.; Batschauer, A.; Essen, L.-O.  
Deposited on : 2006-08-01  
Resolution : 2.00 Å(reported)

This is a Full wwPDB X-ray Structure Validation Report for a publicly released PDB entry.

We welcome your comments at [validation@mail.wwpdb.org](mailto:validation@mail.wwpdb.org)

A user guide is available at

<http://wwpdb.org/validation/2016/XrayValidationReportHelp>

with specific help available everywhere you see the ⓘ symbol.

---

The following versions of software and data (see [references ⓘ](#)) were used in the production of this report:

MolProbity : 4.02b-467  
Mogul : 1.7.2 (RC1), CSD as538be (2017)  
Xtriage (Phenix) : 1.9-1692  
EDS : rb-20029077  
Percentile statistics : 20161228.v01 (using entries in the PDB archive December 28th 2016)  
Refmac : 5.8.0135  
CCP4 : 6.5.0  
Ideal geometry (proteins) : Engh & Huber (2001)  
Ideal geometry (DNA, RNA) : Parkinson et al. (1996)  
Validation Pipeline (wwPDB-VP) : rb-20029077

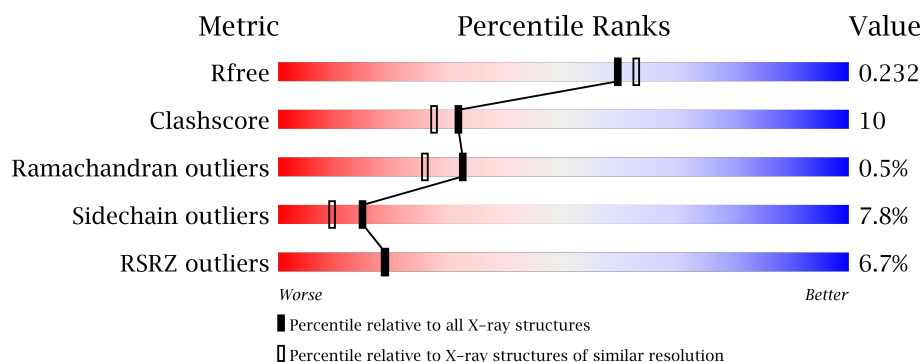
# 1 Overall quality at a glance

The following experimental techniques were used to determine the structure:

## *X-RAY DIFFRACTION*

The reported resolution of this entry is 2.00 Å.

Percentile scores (ranging between 0-100) for global validation metrics of the entry are shown in the following graphic. The table shows the number of entries on which the scores are based.



Metric	Whole archive (#Entries)	Similar resolution (#Entries, resolution range(Å))
$R_{free}$	100719	6609 (2.00-2.00)
Clashscore	112137	7775 (2.00-2.00)
Ramachandran outliers	110173	7679 (2.00-2.00)
Sidechain outliers	110143	7678 (2.00-2.00)
RSRZ outliers	101464	6696 (2.00-2.00)

The table below summarises the geometric issues observed across the polymeric chains and their fit to the electron density. The red, orange, yellow and green segments on the lower bar indicate the fraction of residues that contain outliers for  $\geq 3$ , 2, 1 and 0 types of geometric quality criteria. A grey segment represents the fraction of residues that are not modelled. The numeric value for each fraction is indicated below the corresponding segment, with a dot representing fractions  $\leq 5\%$ . The upper red bar (where present) indicates the fraction of residues that have poor fit to the electron density. The numeric value is given above the bar.

Mol	Chain	Length	Quality of chain
1	A	420	<div> <div>7%</div> <div>80%</div> <div>15%</div> <div>..</div> </div>

The following table lists non-polymeric compounds, carbohydrate monomers and non-standard residues in protein, DNA, RNA chains that are outliers for geometric or electron-density-fit criteria:

Mol	Type	Chain	Res	Chirality	Geometry	Clashes	Electron density
5	PO4	A	1423	-	-	-	X

## 2 Entry composition [i](#)

There are 6 unique types of molecules in this entry. The entry contains 3723 atoms, of which 0 are hydrogens and 0 are deuteriums.

In the tables below, the ZeroOcc column contains the number of atoms modelled with zero occupancy, the AltConf column contains the number of residues with at least one atom in alternate conformation and the Trace column contains the number of residues modelled with at most 2 atoms.

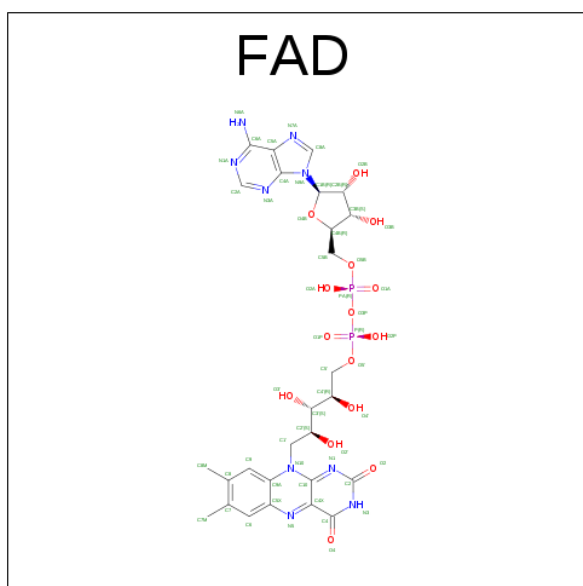
- Molecule 1 is a protein called DEOXYRIBODIPYRIMIDINE PHOTO-LYASE.

Mol	Chain	Residues	Atoms					ZeroOcc	AltConf	Trace
1	A	419	Total	C	N	O	S	58	0	0
			3393	2186	631	572	4			

- Molecule 2 is CHLORIDE ION (three-letter code: CL) (formula: Cl).

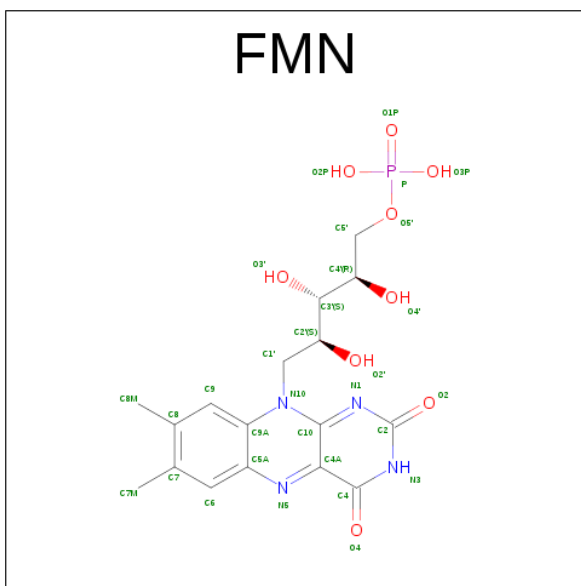
Mol	Chain	Residues	Atoms		ZeroOcc	AltConf
2	A	1	Total	Cl	0	0
			1	1		

- Molecule 3 is FLAVIN-ADENINE DINUCLEOTIDE (three-letter code: FAD) (formula: C<sub>27</sub>H<sub>33</sub>N<sub>9</sub>O<sub>15</sub>P<sub>2</sub>).



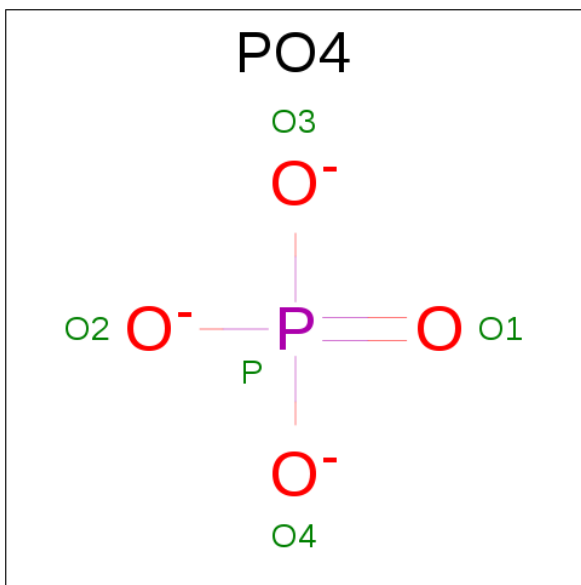
Mol	Chain	Residues	Atoms					ZeroOcc	AltConf
3	A	1	Total	C	N	O	P	0	0
			53	27	9	15	2		

- Molecule 4 is FLAVIN MONONUCLEOTIDE (three-letter code: FMN) (formula:  $C_{17}H_{21}N_4O_9P$ ).



Mol	Chain	Residues	Atoms					ZeroOcc	AltConf
4	A	1	Total	C	N	O	P	0	0
			31	17	4	9	1		

- Molecule 5 is PHOSPHATE ION (three-letter code: PO4) (formula:  $O_4P$ ).



Mol	Chain	Residues	Atoms			ZeroOcc	AltConf
5	A	1	Total	O	P	0	0
			5	4	1		
5	A	1	Total	O	P	0	0
			5	4	1		

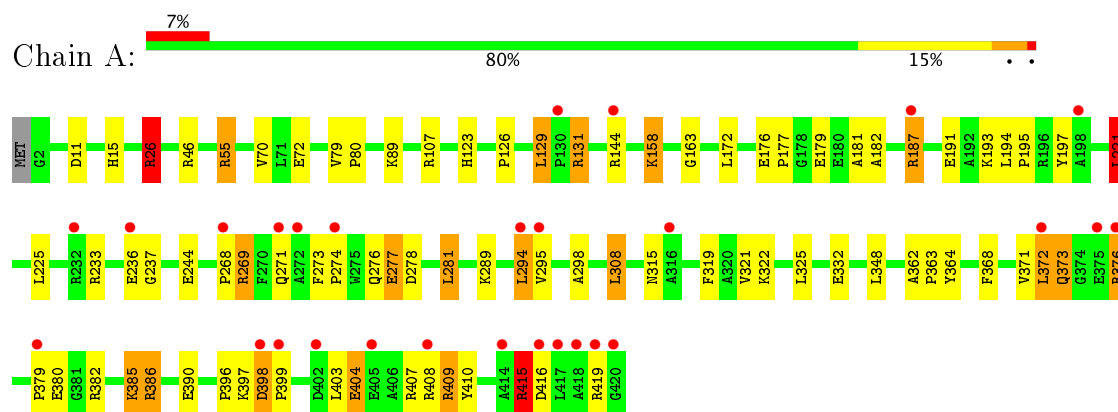
- Molecule 6 is water.

Mol	Chain	Residues	Atoms		ZeroOcc	AltConf
6	A	235	Total 235	O 235	0	0

### 3 Residue-property plots [i](#)

These plots are drawn for all protein, RNA and DNA chains in the entry. The first graphic for a chain summarises the proportions of the various outlier classes displayed in the second graphic. The second graphic shows the sequence view annotated by issues in geometry and electron density. Residues are color-coded according to the number of geometric quality criteria for which they contain at least one outlier: green = 0, yellow = 1, orange = 2 and red = 3 or more. A red dot above a residue indicates a poor fit to the electron density ( $RSRZ > 2$ ). Stretches of 2 or more consecutive residues without any outlier are shown as a green connector. Residues present in the sample, but not in the model, are shown in grey.

#### • Molecule 1: DEOXYRIBODIPYRIMIDINE PHOTO-LYASE



## 4 Data and refinement statistics

Property	Value	Source
Space group	P 61 2 2	Depositor
Cell constants a, b, c, $\alpha$ , $\beta$ , $\gamma$	112.43 Å   112.43 Å   140.14 Å 90.00°   90.00°   120.00°	Depositor
Resolution (Å)	19.90 – 2.00 19.85 – 2.00	Depositor EDS
% Data completeness (in resolution range)	99.8 (19.90-2.00) 99.4 (19.85-2.00)	Depositor EDS
$R_{merge}$	0.06	Depositor
$R_{sym}$	(Not available)	Depositor
$\langle I/\sigma(I) \rangle$ <sup>1</sup>	3.02 (at 2.01 Å)	Xtriage
Refinement program	REFMAC	Depositor
R, $R_{free}$	0.183   ,   0.225 0.189   ,   0.232	Depositor DCC
$R_{free}$ test set	1776 reflections (5.24%)	DCC
Wilson B-factor (Å <sup>2</sup> )	37.8	Xtriage
Anisotropy	0.023	Xtriage
Bulk solvent $k_{sol}$ (e/Å <sup>3</sup> ), $B_{sol}$ (Å <sup>2</sup> )	0.35 , 57.4	EDS
L-test for twinning <sup>2</sup>	$\langle  L  \rangle = 0.51$ , $\langle L^2 \rangle = 0.35$	Xtriage
Estimated twinning fraction	No twinning to report.	Xtriage
$F_o, F_c$ correlation	0.96	EDS
Total number of atoms	3723	wwPDB-VP
Average B, all atoms (Å <sup>2</sup> )	46.0	wwPDB-VP

Xtriage's analysis on translational NCS is as follows: *The largest off-origin peak in the Patterson function is 3.69% of the height of the origin peak. No significant pseudotranslation is detected.*

<sup>1</sup>Intensities estimated from amplitudes.

<sup>2</sup>Theoretical values of  $\langle |L| \rangle$ ,  $\langle L^2 \rangle$  for acentric reflections are 0.5, 0.333 respectively for untwinned datasets, and 0.375, 0.2 for perfectly twinned datasets.

## 5 Model quality

### 5.1 Standard geometry

Bond lengths and bond angles in the following residue types are not validated in this section: FMN, PO4, FAD, CL

The Z score for a bond length (or angle) is the number of standard deviations the observed value is removed from the expected value. A bond length (or angle) with  $|Z| > 5$  is considered an outlier worth inspection. RMSZ is the root-mean-square of all Z scores of the bond lengths (or angles).

Mol	Chain	Bond lengths		Bond angles	
		RMSZ	$\# Z  > 5$	RMSZ	$\# Z  > 5$
1	A	1.38	16/3508 (0.5%)	2.36	19/4783 (0.4%)

Chiral center outliers are detected by calculating the chiral volume of a chiral center and verifying if the center is modelled as a planar moiety or with the opposite hand. A planarity outlier is detected by checking planarity of atoms in a peptide group, atoms in a mainchain group or atoms of a sidechain that are expected to be planar.

Mol	Chain	#Chirality outliers	#Planarity outliers
1	A	0	3

All (16) bond length outliers are listed below:

Mol	Chain	Res	Type	Atoms	Z	Observed(Å)	Ideal(Å)
1	A	26	ARG	NE-CZ	45.87	1.92	1.33
1	A	415	ARG	CB-CG	-17.68	1.04	1.52
1	A	276	GLN	CB-CG	17.49	1.99	1.52
1	A	397	LYS	CB-CG	14.94	1.92	1.52
1	A	409	ARG	CB-CG	-14.82	1.12	1.52
1	A	89	LYS	CG-CD	12.64	1.95	1.52
1	A	404	GLU	CB-CG	-12.32	1.28	1.52
1	A	385	LYS	CB-CG	-11.58	1.21	1.52
1	A	382	ARG	CG-CD	10.73	1.78	1.51
1	A	380	GLU	CB-CG	-10.11	1.32	1.52
1	A	158	LYS	CG-CD	-9.90	1.18	1.52
1	A	269	ARG	CB-CG	-7.64	1.31	1.52
1	A	419	ARG	CB-CG	-7.59	1.32	1.52
1	A	408	ARG	CZ-NH1	6.35	1.41	1.33
1	A	72	GLU	CB-CG	5.95	1.63	1.52
1	A	72	GLU	CG-CD	5.69	1.60	1.51

All (19) bond angle outliers are listed below:



Mol	Chain	Res	Type	Atoms	Z	Observed(°)	Ideal(°)
1	A	26	ARG	NE-CZ-NH1	-119.08	60.76	120.30
1	A	26	ARG	NE-CZ-NH2	83.99	162.29	120.30
1	A	26	ARG	CD-NE-CZ	-23.64	90.51	123.60
1	A	415	ARG	CA-CB-CG	20.05	157.50	113.40
1	A	89	LYS	CB-CG-CD	16.50	154.49	111.60
1	A	404	GLU	CA-CB-CG	14.43	145.15	113.40
1	A	380	GLU	CB-CG-CD	-13.89	76.69	114.20
1	A	158	LYS	CB-CG-CD	12.81	144.92	111.60
1	A	409	ARG	CA-CB-CG	10.44	136.37	113.40
1	A	269	ARG	CA-CB-CG	9.46	134.20	113.40
1	A	55	ARG	NE-CZ-NH2	-9.36	115.62	120.30
1	A	419	ARG	CA-CB-CG	8.67	132.47	113.40
1	A	415	ARG	CB-CG-CD	8.28	133.13	111.60
1	A	55	ARG	NE-CZ-NH1	7.16	123.88	120.30
1	A	382	ARG	CG-CD-NE	6.33	125.08	111.80
1	A	408	ARG	NE-CZ-NH2	-6.04	117.28	120.30
1	A	385	LYS	CA-CB-CG	5.64	125.81	113.40
1	A	221	LEU	CA-CB-CG	5.56	128.09	115.30
1	A	276	GLN	CA-CB-CG	-5.04	102.32	113.40

There are no chirality outliers.

All (3) planarity outliers are listed below:

Mol	Chain	Res	Type	Group
1	A	26	ARG	Sidechain
1	A	415	ARG	Peptide
1	A	55	ARG	Sidechain

## 5.2 Too-close contacts ⓘ

In the following table, the Non-H and H(model) columns list the number of non-hydrogen atoms and hydrogen atoms in the chain respectively. The H(added) column lists the number of hydrogen atoms added and optimized by MolProbity. The Clashes column lists the number of clashes within the asymmetric unit, whereas Symm-Clashes lists symmetry related clashes.

Mol	Chain	Non-H	H(model)	H(added)	Clashes	Symm-Clashes
1	A	3393	0	3357	68	0
2	A	1	0	0	0	0
3	A	53	0	31	0	0
4	A	31	0	19	1	0
5	A	10	0	0	1	0
6	A	235	0	0	25	0

*Continued on next page...*

*Continued from previous page...*

Mol	Chain	Non-H	H(model)	H(added)	Clashes	Symm-Clashes
All	All	3723	0	3407	69	0

The all-atom clashscore is defined as the number of clashes found per 1000 atoms (including hydrogen atoms). The all-atom clashscore for this structure is 10.

All (69) close contacts within the same asymmetric unit are listed below, sorted by their clash magnitude.

Atom-1	Atom-2	Interatomic distance (Å)	Clash overlap (Å)
1:A:176:GLU:HG3	6:A:2130:HOH:O	1.52	1.08
1:A:131:ARG:HH11	1:A:131:ARG:CG	1.65	1.07
1:A:26:ARG:NE	6:A:2018:HOH:O	1.93	1.02
1:A:131:ARG:HG3	1:A:131:ARG:NH1	1.45	1.00
1:A:123:HIS:HD2	6:A:2092:HOH:O	1.48	0.95
1:A:237:GLY:N	6:A:2166:HOH:O	2.01	0.91
1:A:236:GLU:CG	6:A:2163:HOH:O	2.20	0.89
1:A:376:ARG:HG2	1:A:376:ARG:HH11	1.39	0.85
1:A:236:GLU:HA	6:A:2162:HOH:O	1.75	0.85
1:A:236:GLU:HG3	6:A:2163:HOH:O	1.77	0.83
1:A:277:GLU:OE1	1:A:277:GLU:HA	1.80	0.82
1:A:332:GLU:OE1	6:A:2204:HOH:O	1.98	0.81
1:A:236:GLU:HB3	6:A:2165:HOH:O	1.81	0.80
1:A:46:ARG:NH1	5:A:1424:PO4:O1	2.16	0.76
1:A:131:ARG:HH11	1:A:131:ARG:HG3	0.72	0.76
1:A:15:HIS:ND1	1:A:179:GLU:OE2	2.15	0.75
1:A:176:GLU:CG	6:A:2130:HOH:O	2.23	0.74
1:A:376:ARG:CG	1:A:376:ARG:HH11	2.01	0.73
1:A:390:GLU:HB2	6:A:2220:HOH:O	1.89	0.73
1:A:131:ARG:HD3	6:A:2101:HOH:O	1.90	0.71
1:A:315:ASN:HD21	1:A:373:GLN:HG2	1.59	0.67
1:A:15:HIS:CD2	1:A:225:LEU:HD13	2.28	0.67
1:A:187:ARG:HG3	6:A:2156:HOH:O	1.95	0.66
1:A:289:LYS:CE	6:A:2187:HOH:O	2.48	0.60
1:A:372:LEU:CD1	1:A:376:ARG:HH22	2.15	0.59
1:A:123:HIS:CD2	6:A:2092:HOH:O	2.34	0.58
1:A:236:GLU:HG2	6:A:2163:HOH:O	1.96	0.58
1:A:289:LYS:HE2	6:A:2187:HOH:O	2.05	0.56
1:A:182:ALA:HB1	1:A:221:LEU:HG	1.88	0.56
1:A:268:PRO:HA	1:A:271:GLN:CD	2.25	0.56
1:A:379:PRO:HD2	6:A:2145:HOH:O	2.06	0.55
1:A:126:PRO:HG2	1:A:129:LEU:HD13	1.87	0.55
1:A:131:ARG:CD	6:A:2101:HOH:O	2.54	0.54

*Continued on next page...*

*Continued from previous page...*

Atom-1	Atom-2	Interatomic distance (Å)	Clash overlap (Å)
1:A:131:ARG:NH1	1:A:131:ARG:CG	2.35	0.53
1:A:368:PHE:HB3	1:A:373:GLN:HE21	1.73	0.52
1:A:129:LEU:HB2	6:A:2099:HOH:O	2.09	0.52
1:A:376:ARG:CG	1:A:376:ARG:NH1	2.68	0.50
1:A:187:ARG:O	1:A:191:GLU:HG2	2.13	0.49
1:A:294:LEU:C	1:A:294:LEU:HD12	2.33	0.49
1:A:294:LEU:O	1:A:294:LEU:HD12	2.13	0.49
1:A:364:TYR:OH	1:A:415:ARG:HB3	2.12	0.48
1:A:193:LYS:HD2	6:A:2136:HOH:O	2.12	0.48
1:A:407:ARG:HB3	1:A:407:ARG:HE	1.35	0.47
1:A:176:GLU:HG2	1:A:181:ALA:HB2	1.97	0.47
1:A:372:LEU:CD1	1:A:376:ARG:NH2	2.78	0.47
1:A:236:GLU:HB2	6:A:2164:HOH:O	2.15	0.47
1:A:79:VAL:HB	1:A:80:PRO:HD3	1.97	0.46
1:A:273:PHE:HE2	1:A:325:LEU:HD22	1.79	0.46
1:A:281:LEU:HD23	1:A:281:LEU:HA	1.63	0.46
1:A:131:ARG:NE	6:A:2101:HOH:O	2.48	0.45
1:A:398:ASP:N	1:A:399:PRO:CD	2.80	0.45
1:A:129:LEU:HA	1:A:129:LEU:HD12	1.77	0.45
1:A:194:LEU:HB3	1:A:195:PRO:HD3	1.99	0.45
1:A:386:ARG:HD2	6:A:2218:HOH:O	2.17	0.45
1:A:372:LEU:HD13	1:A:376:ARG:NH2	2.32	0.44
1:A:197:TYR:OH	1:A:244:GLU:HG3	2.18	0.44
1:A:273:PHE:CD2	1:A:274:PRO:HD2	2.54	0.43
1:A:176:GLU:HA	1:A:177:PRO:HD3	1.84	0.43
1:A:315:ASN:ND2	1:A:373:GLN:HG2	2.30	0.42
4:A:1422:FMN:O4'	6:A:2231:HOH:O	2.22	0.42
1:A:70:VAL:O	1:A:163:GLY:HA3	2.20	0.42
1:A:396:PRO:HG2	1:A:403:LEU:HD12	2.02	0.41
1:A:295:VAL:HG21	1:A:319:PHE:CG	2.56	0.41
1:A:368:PHE:HB3	1:A:373:GLN:NE2	2.35	0.41
1:A:321:VAL:O	1:A:325:LEU:HA	2.21	0.41
1:A:362:ALA:HA	1:A:363:PRO:HD3	1.92	0.41
1:A:273:PHE:CE2	1:A:325:LEU:HD22	2.55	0.41
1:A:322:LYS:HG2	1:A:410:TYR:CE1	2.56	0.40
1:A:298:ALA:O	1:A:308:LEU:HD11	2.22	0.40

There are no symmetry-related clashes.

## 5.3 Torsion angles [i](#)

### 5.3.1 Protein backbone [i](#)

In the following table, the Percentiles column shows the percent Ramachandran outliers of the chain as a percentile score with respect to all X-ray entries followed by that with respect to entries of similar resolution.

The Analysed column shows the number of residues for which the backbone conformation was analysed, and the total number of residues.

Mol	Chain	Analysed	Favoured	Allowed	Outliers	Percentiles	
1	A	417/420 (99%)	408 (98%)	7 (2%)	2 (0%)	32	26

All (2) Ramachandran outliers are listed below:

Mol	Chain	Res	Type
1	A	416	ASP
1	A	278	ASP

### 5.3.2 Protein sidechains [i](#)

In the following table, the Percentiles column shows the percent sidechain outliers of the chain as a percentile score with respect to all X-ray entries followed by that with respect to entries of similar resolution.

The Analysed column shows the number of residues for which the sidechain conformation was analysed, and the total number of residues.

Mol	Chain	Analysed	Rotameric	Outliers	Percentiles	
1	A	334/335 (100%)	308 (92%)	26 (8%)	15	9

All (26) residues with a non-rotameric sidechain are listed below:

Mol	Chain	Res	Type
1	A	11	ASP
1	A	107	ARG
1	A	129	LEU
1	A	131	ARG
1	A	144	ARG
1	A	158	LYS
1	A	172	LEU
1	A	187	ARG
1	A	221	LEU

*Continued on next page...*

*Continued from previous page...*

Mol	Chain	Res	Type
1	A	233	ARG
1	A	269	ARG
1	A	277	GLU
1	A	281	LEU
1	A	294	LEU
1	A	308	LEU
1	A	348	LEU
1	A	371	VAL
1	A	372	LEU
1	A	373	GLN
1	A	376	ARG
1	A	385	LYS
1	A	386	ARG
1	A	398	ASP
1	A	404	GLU
1	A	409	ARG
1	A	415	ARG

Some sidechains can be flipped to improve hydrogen bonding and reduce clashes. All (3) such sidechains are listed below:

Mol	Chain	Res	Type
1	A	39	ASN
1	A	315	ASN
1	A	373	GLN

### 5.3.3 RNA ⓘ

There are no RNA molecules in this entry.

## 5.4 Non-standard residues in protein, DNA, RNA chains ⓘ

There are no non-standard protein/DNA/RNA residues in this entry.

## 5.5 Carbohydrates ⓘ

There are no carbohydrates in this entry.

## 5.6 Ligand geometry

Of 5 ligands modelled in this entry, 1 is monoatomic - leaving 4 for Mogul analysis.

In the following table, the Counts columns list the number of bonds (or angles) for which Mogul statistics could be retrieved, the number of bonds (or angles) that are observed in the model and the number of bonds (or angles) that are defined in the chemical component dictionary. The Link column lists molecule types, if any, to which the group is linked. The Z score for a bond length (or angle) is the number of standard deviations the observed value is removed from the expected value. A bond length (or angle) with  $|Z| > 2$  is considered an outlier worth inspection. RMSZ is the root-mean-square of all Z scores of the bond lengths (or angles).

Mol	Type	Chain	Res	Link	Bond lengths			Bond angles		
					Counts	RMSZ	# $ Z  > 2$	Counts	RMSZ	# $ Z  > 2$
3	FAD	A	1421	-	51,58,58	1.31	6 (11%)	54,89,89	1.92	11 (20%)
4	FMN	A	1422	-	31,33,33	1.10	2 (6%)	38,50,50	2.31	9 (23%)
5	PO4	A	1423	-	4,4,4	1.03	0	6,6,6	0.67	0
5	PO4	A	1424	-	4,4,4	0.57	0	6,6,6	0.77	0

In the following table, the Chirals column lists the number of chiral outliers, the number of chiral centers analysed, the number of these observed in the model and the number defined in the chemical component dictionary. Similar counts are reported in the Torsion and Rings columns. '-' means no outliers of that kind were identified.

Mol	Type	Chain	Res	Link	Chirals	Torsions	Rings
3	FAD	A	1421	-	-	0/28/50/50	0/6/6/6
4	FMN	A	1422	-	-	0/16/18/18	0/3/3/3
5	PO4	A	1423	-	-	0/0/0/0	0/0/0/0
5	PO4	A	1424	-	-	0/0/0/0	0/0/0/0

All (8) bond length outliers are listed below:

Mol	Chain	Res	Type	Atoms	Z	Observed(Å)	Ideal(Å)
3	A	1421	FAD	C4-N3	2.19	1.37	1.33
4	A	1422	FMN	C10-N1	2.35	1.36	1.33
3	A	1421	FAD	C1'-N10	2.69	1.51	1.48
3	A	1421	FAD	C2A-N3A	3.16	1.37	1.32
3	A	1421	FAD	C5X-N5	3.28	1.40	1.35
3	A	1421	FAD	C4X-N5	3.42	1.38	1.33
4	A	1422	FMN	C4A-N5	3.44	1.38	1.33
3	A	1421	FAD	C10-N1	4.20	1.39	1.33

All (20) bond angle outliers are listed below:

Mol	Chain	Res	Type	Atoms	Z	Observed(°)	Ideal(°)
3	A	1421	FAD	N3A-C2A-N1A	-8.22	121.70	128.86
4	A	1422	FMN	C4A-C4-N3	-4.83	116.61	123.48
3	A	1421	FAD	C4A-C5A-N7A	-3.47	106.06	109.41
3	A	1421	FAD	C4X-C4-N3	-2.88	119.38	123.48
4	A	1422	FMN	O3'-C3'-C2'	-2.85	101.74	108.82
3	A	1421	FAD	C4'-C3'-C2'	-2.47	108.10	113.41
3	A	1421	FAD	C1B-N9A-C4A	-2.45	122.41	126.64
4	A	1422	FMN	C5A-C9A-N10	2.09	119.21	117.66
4	A	1422	FMN	O5'-P-O1P	2.13	112.45	106.47
3	A	1421	FAD	O4'-C4'-C3'	2.14	114.40	109.09
3	A	1421	FAD	C1'-N10-C9A	2.31	120.46	118.35
3	A	1421	FAD	C5A-C6A-N6A	2.34	125.25	120.47
4	A	1422	FMN	C1'-N10-C9A	2.82	120.93	118.35
3	A	1421	FAD	C4X-C10-N10	3.76	123.13	120.52
3	A	1421	FAD	C5X-C9A-N10	3.96	120.59	117.66
4	A	1422	FMN	C4A-N5-C5A	4.08	121.07	116.76
3	A	1421	FAD	C4-N3-C2	4.27	118.90	115.16
4	A	1422	FMN	C4'-C3'-C2'	4.30	122.67	113.41
4	A	1422	FMN	O2'-C2'-C3'	5.61	123.02	109.09
4	A	1422	FMN	C4-N3-C2	7.21	121.47	115.16

There are no chirality outliers.

There are no torsion outliers.

There are no ring outliers.

2 monomers are involved in 2 short contacts:

Mol	Chain	Res	Type	Clashes	Symm-Clashes
4	A	1422	FMN	1	0
5	A	1424	PO4	1	0

## 5.7 Other polymers

There are no such residues in this entry.

## 5.8 Polymer linkage issues

There are no chain breaks in this entry.

## 6 Fit of model and data ⓘ

### 6.1 Protein, DNA and RNA chains ⓘ

In the following table, the column labelled ‘#RSRZ> 2’ contains the number (and percentage) of RSRZ outliers, followed by percent RSRZ outliers for the chain as percentile scores relative to all X-ray entries and entries of similar resolution. The OWAB column contains the minimum, median, 95<sup>th</sup> percentile and maximum values of the occupancy-weighted average B-factor per residue. The column labelled ‘Q< 0.9’ lists the number of (and percentage) of residues with an average occupancy less than 0.9.

Mol	Chain	Analysed	<RSRZ>	#RSRZ>2	OWAB(Å <sup>2</sup> )	Q<0.9
1	A	419/420 (99%)	0.35	28 (6%) 19 18	32, 44, 61, 92	13 (3%)

All (28) RSRZ outliers are listed below:

Mol	Chain	Res	Type	RSRZ
1	A	420	GLY	8.6
1	A	236	GLU	6.5
1	A	419	ARG	5.8
1	A	379	PRO	5.6
1	A	272	ALA	5.4
1	A	418	ALA	4.9
1	A	376	ARG	4.9
1	A	417	LEU	4.7
1	A	398	ASP	4.1
1	A	372	LEU	3.9
1	A	294	LEU	3.4
1	A	271	GLN	3.3
1	A	274	PRO	3.1
1	A	399	PRO	3.1
1	A	414	ALA	3.0
1	A	130	PRO	2.9
1	A	295	VAL	2.8
1	A	268	PRO	2.8
1	A	144	ARG	2.7
1	A	408	ARG	2.3
1	A	402	ASP	2.3
1	A	316	ALA	2.3
1	A	198	ALA	2.2
1	A	405	GLU	2.2
1	A	416	ASP	2.2
1	A	187	ARG	2.1
1	A	375	GLU	2.0

*Continued on next page...*



*Continued from previous page...*

Mol	Chain	Res	Type	RSRZ
1	A	232	ARG	2.0

## 6.2 Non-standard residues in protein, DNA, RNA chains [i](#)

There are no non-standard protein/DNA/RNA residues in this entry.

## 6.3 Carbohydrates [i](#)

There are no carbohydrates in this entry.

## 6.4 Ligands [i](#)

In the following table, the Atoms column lists the number of modelled atoms in the group and the number defined in the chemical component dictionary. LLDF column lists the quality of electron density of the group with respect to its neighbouring residues in protein, DNA or RNA chains. The B-factors column lists the minimum, median, 95<sup>th</sup> percentile and maximum values of B factors of atoms in the group. The column labelled 'Q< 0.9' lists the number of atoms with occupancy less than 0.9.

Mol	Type	Chain	Res	Atoms	RSCC	RSR	LLDF	B-factors(Å <sup>2</sup> )	Q<0.9
5	PO4	A	1423	5/5	0.96	0.24	4.10	47,53,60,62	0
4	FMN	A	1422	31/31	0.88	0.15	1.15	32,37,91,98	0
5	PO4	A	1424	5/5	0.93	0.16	1.11	79,83,85,88	0
3	FAD	A	1421	53/53	0.96	0.10	-0.76	37,44,47,48	0
2	CL	A	902	1/1	0.86	0.05	-	82,82,82,82	0

## 6.5 Other polymers [i](#)

There are no such residues in this entry.