



# Full wwPDB X-ray Structure Validation Report ⓘ

Nov 7, 2017 – 01:23 AM EST

PDB ID : 4J17  
Title : CRYSTAL STRUCTURE OF BACE-1 IN COMPLEX WITH 5-Cyano-pyridine-2-carboxylic acid [3-((S)-2-amino-4-difluoromethyl-5,6-dihydro-4H-[1,3]oxazin-4-yl)-4-fluoro-phenyl]-amide  
Authors : Kuglstatter, A.; Stihle, M.  
Deposited on : unknown  
Resolution : 1.81 Å(reported)

This is a Full wwPDB X-ray Structure Validation Report for a publicly released PDB entry.

We welcome your comments at [validation@mail.wwpdb.org](mailto:validation@mail.wwpdb.org)

A user guide is available at

<http://wwpdb.org/validation/2016/XrayValidationReportHelp>

with specific help available everywhere you see the ⓘ symbol.

---

The following versions of software and data (see [references ⓘ](#)) were used in the production of this report:

MolProbity : 4.02b-467  
Mogul : 1.7.2 (RC1), CSD as538be (2017)  
Xtriage (Phenix) : 1.9-1692  
EDS : rb-20030345  
Percentile statistics : 20161228.v01 (using entries in the PDB archive December 28th 2016)  
Refmac : 5.8.0135  
CCP4 : 6.5.0  
Ideal geometry (proteins) : Engh & Huber (2001)  
Ideal geometry (DNA, RNA) : Parkinson et al. (1996)  
Validation Pipeline (wwPDB-VP) : rb-20030345

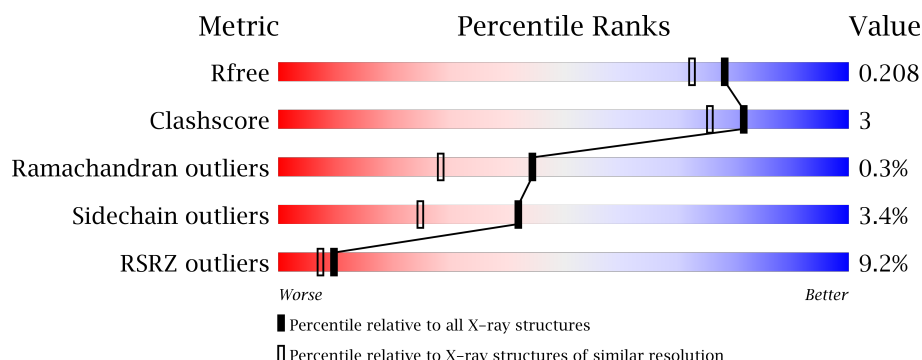
# 1 Overall quality at a glance

The following experimental techniques were used to determine the structure:

## *X-RAY DIFFRACTION*

The reported resolution of this entry is 1.81 Å.

Percentile scores (ranging between 0-100) for global validation metrics of the entry are shown in the following graphic. The table shows the number of entries on which the scores are based.



Metric	Whole archive (#Entries)	Similar resolution (#Entries, resolution range(Å))
$R_{free}$	100719	5868 (1.84-1.80)
Clashscore	112137	6856 (1.84-1.80)
Ramachandran outliers	110173	6780 (1.84-1.80)
Sidechain outliers	110143	6780 (1.84-1.80)
RSRZ outliers	101464	5947 (1.84-1.80)

The table below summarises the geometric issues observed across the polymeric chains and their fit to the electron density. The red, orange, yellow and green segments on the lower bar indicate the fraction of residues that contain outliers for  $\geq 3$ , 2, 1 and 0 types of geometric quality criteria. A grey segment represents the fraction of residues that are not modelled. The numeric value for each fraction is indicated below the corresponding segment, with a dot representing fractions  $\leq 5\%$ . The upper red bar (where present) indicates the fraction of residues that have poor fit to the electron density. The numeric value is given above the bar.

Mol	Chain	Length	Quality of chain
1	A	409	<div> <div>9%</div> <div>84%</div> <div>8% • 7%</div> </div>

## 2 Entry composition [i](#)

There are 5 unique types of molecules in this entry. The entry contains 3259 atoms, of which 0 are hydrogens and 0 are deuteriums.

In the tables below, the ZeroOcc column contains the number of atoms modelled with zero occupancy, the AltConf column contains the number of residues with at least one atom in alternate conformation and the Trace column contains the number of residues modelled with at most 2 atoms.

- Molecule 1 is a protein called Beta-secretase 1.

Mol	Chain	Residues	Atoms					ZeroOcc	AltConf	Trace
			Total	C	N	O	S			
1	A	379	2982	1908	497	563	14	0	1	0

There is a discrepancy between the modelled and reference sequences:

Chain	Residue	Modelled	Actual	Comment	Reference
A	307	ALA	LYS	ENGINEERED MUTATION	UNP P56817

- Molecule 2 is SODIUM ION (three-letter code: NA) (formula: Na).

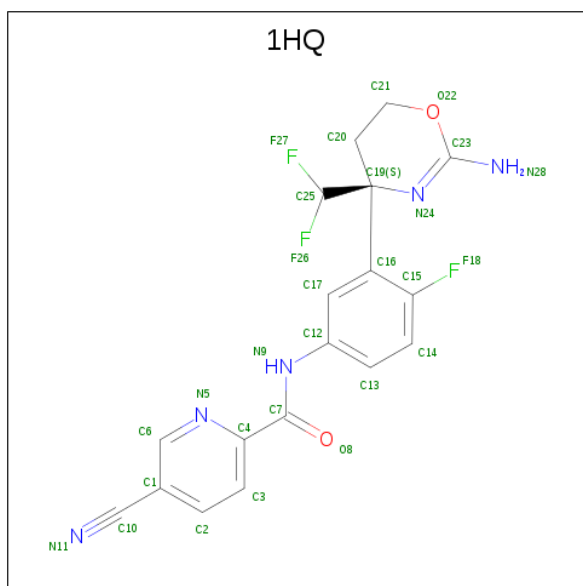
Mol	Chain	Residues	Atoms		ZeroOcc	AltConf
2	A	2	Total	Na	0	0
			2	2		

- Molecule 3 is DIMETHYL SULFOXIDE (three-letter code: DMS) (formula: C<sub>2</sub>H<sub>6</sub>OS).



Mol	Chain	Residues	Atoms				ZeroOcc	AltConf
3	A	1	Total	C	O	S	0	0
			4	2	1	1		

- Molecule 4 is N-{3-[(4S)-2-amino-4-(difluoromethyl)-5,6-dihydro-4H-1,3-oxazin-4-yl]-4-fluorophenyl}-5-cyanopyridine-2-carboxamide (three-letter code: 1HQ) (formula: C<sub>18</sub>H<sub>14</sub>F<sub>3</sub>N<sub>5</sub>O<sub>2</sub>).



Mol	Chain	Residues	Atoms					ZeroOcc	AltConf
4	A	1	Total	C	F	N	O	0	0
			28	18	3	5	2		

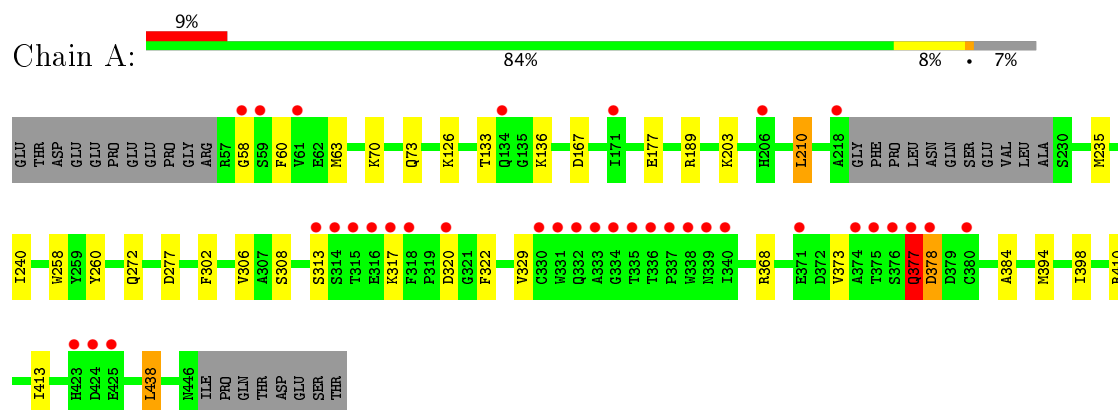
- Molecule 5 is water.

Mol	Chain	Residues	Atoms		ZeroOcc	AltConf
5	A	243	Total	O	0	0
			243	243		

### 3 Residue-property plots [i](#)

These plots are drawn for all protein, RNA and DNA chains in the entry. The first graphic for a chain summarises the proportions of the various outlier classes displayed in the second graphic. The second graphic shows the sequence view annotated by issues in geometry and electron density. Residues are color-coded according to the number of geometric quality criteria for which they contain at least one outlier: green = 0, yellow = 1, orange = 2 and red = 3 or more. A red dot above a residue indicates a poor fit to the electron density ( $RSRZ > 2$ ). Stretches of 2 or more consecutive residues without any outlier are shown as a green connector. Residues present in the sample, but not in the model, are shown in grey.

#### • Molecule 1: Beta-secretase 1



## 4 Data and refinement statistics

Property	Value	Source
Space group	P 61 2 2	Depositor
Cell constants a, b, c, $\alpha$ , $\beta$ , $\gamma$	102.31Å 102.31Å 170.08Å 90.00° 90.00° 120.00°	Depositor
Resolution (Å)	48.99 – 1.81 48.99 – 1.81	Depositor EDS
% Data completeness (in resolution range)	99.6 (48.99-1.81) 99.6 (48.99-1.81)	Depositor EDS
$R_{merge}$	(Not available)	Depositor
$R_{sym}$	0.12	Depositor
$\langle I/\sigma(I) \rangle$ <sup>1</sup>	1.16 (at 1.81Å)	Xtriage
Refinement program	REFMAC	Depositor
R, $R_{free}$	0.169 , 0.208 0.169 , 0.208	Depositor DCC
$R_{free}$ test set	2444 reflections (5.32%)	DCC
Wilson B-factor (Å <sup>2</sup> )	31.8	Xtriage
Anisotropy	0.005	Xtriage
Bulk solvent $k_{sol}$ (e/Å <sup>3</sup> ), $B_{sol}$ (Å <sup>2</sup> )	0.37 , 47.2	EDS
L-test for twinning <sup>2</sup>	$\langle  L  \rangle = 0.48$ , $\langle L^2 \rangle = 0.32$	Xtriage
Estimated twinning fraction	No twinning to report.	Xtriage
$F_o, F_c$ correlation	0.97	EDS
Total number of atoms	3259	wwPDB-VP
Average B, all atoms (Å <sup>2</sup> )	38.0	wwPDB-VP

Xtriage's analysis on translational NCS is as follows: *The largest off-origin peak in the Patterson function is 4.22% of the height of the origin peak. No significant pseudotranslation is detected.*

<sup>1</sup>Intensities estimated from amplitudes.

<sup>2</sup>Theoretical values of  $\langle |L| \rangle$ ,  $\langle L^2 \rangle$  for acentric reflections are 0.5, 0.333 respectively for untwinned datasets, and 0.375, 0.2 for perfectly twinned datasets.

## 5 Model quality

### 5.1 Standard geometry

Bond lengths and bond angles in the following residue types are not validated in this section: NA, 1HQ, DMS

The Z score for a bond length (or angle) is the number of standard deviations the observed value is removed from the expected value. A bond length (or angle) with  $|Z| > 5$  is considered an outlier worth inspection. RMSZ is the root-mean-square of all Z scores of the bond lengths (or angles).

Mol	Chain	Bond lengths		Bond angles	
		RMSZ	$\# Z  > 5$	RMSZ	$\# Z  > 5$
1	A	1.00	1/3060 (0.0%)	1.00	10/4159 (0.2%)

All (1) bond length outliers are listed below:

Mol	Chain	Res	Type	Atoms	Z	Observed(Å)	Ideal(Å)
1	A	308	SER	CB-OG	-5.87	1.34	1.42

All (10) bond angle outliers are listed below:

Mol	Chain	Res	Type	Atoms	Z	Observed(°)	Ideal(°)
1	A	189	ARG	NE-CZ-NH1	7.72	124.16	120.30
1	A	210	LEU	CB-CG-CD2	-7.55	98.16	111.00
1	A	189	ARG	NE-CZ-NH2	-7.33	116.64	120.30
1	A	410	ARG	NE-CZ-NH2	-7.16	116.72	120.30
1	A	277	ASP	CB-CG-OD1	6.11	123.80	118.30
1	A	410	ARG	CG-CD-NE	-5.53	100.18	111.80
1	A	177	GLU	OE1-CD-OE2	-5.48	116.73	123.30
1	A	377	GLN	C-N-CA	5.46	135.35	121.70
1	A	235	MET	CG-SD-CE	5.28	108.64	100.20
1	A	438	LEU	CB-CG-CD1	5.27	119.96	111.00

There are no chirality outliers.

There are no planarity outliers.

### 5.2 Too-close contacts

In the following table, the Non-H and H(model) columns list the number of non-hydrogen atoms and hydrogen atoms in the chain respectively. The H(added) column lists the number of hydrogen atoms added and optimized by MolProbity. The Clashes column lists the number of clashes within

the asymmetric unit, whereas Symm-Clashes lists symmetry related clashes.

Mol	Chain	Non-H	H(model)	H(added)	Clashes	Symm-Clashes
1	A	2982	0	2894	17	1
2	A	2	0	0	0	0
3	A	4	0	6	0	0
4	A	28	0	14	1	0
5	A	243	0	0	1	3
All	All	3259	0	2914	18	3

The all-atom clashscore is defined as the number of clashes found per 1000 atoms (including hydrogen atoms). The all-atom clashscore for this structure is 3.

All (18) close contacts within the same asymmetric unit are listed below, sorted by their clash magnitude.

Atom-1	Atom-2	Interatomic distance (Å)	Clash overlap (Å)
1:A:377:GLN:HG2	1:A:378:ASP:HB2	1.62	0.82
1:A:373:VAL:HG13	1:A:373:VAL:O	2.00	0.62
1:A:70:LYS:HE2	1:A:73:GLN:OE1	2.00	0.61
1:A:377:GLN:CA	1:A:378:ASP:HB2	2.34	0.58
1:A:377:GLN:CG	1:A:378:ASP:HB2	2.33	0.57
1:A:377:GLN:H	1:A:378:ASP:HB2	1.71	0.56
1:A:377:GLN:N	1:A:378:ASP:HB2	2.25	0.52
1:A:322:PHE:CE1	1:A:329:VAL:HG12	2.45	0.52
1:A:260:TYR:HB3	1:A:413[B]:ILE:HD11	1.93	0.49
1:A:58:GLY:HA2	1:A:240:ILE:O	2.13	0.49
1:A:60:PHE:CD2	1:A:63:MET:HE1	2.49	0.48
1:A:368:ARG:HG2	1:A:384:ALA:HB2	1.95	0.47
1:A:377:GLN:CB	1:A:378:ASP:HB2	2.45	0.47
1:A:302:PHE:CZ	1:A:306:VAL:HG21	2.52	0.45
1:A:394:MET:CE	1:A:398:ILE:HG21	2.46	0.45
1:A:313:SER:HB2	5:A:792:HOH:O	2.17	0.44
1:A:368:ARG:CG	1:A:384:ALA:HB2	2.51	0.41
4:A:504:1HQ:H12	4:A:504:1HQ:F18	2.12	0.40

All (3) symmetry-related close contacts are listed below. The label for Atom-2 includes the symmetry operator and encoded unit-cell translations to be applied.

Atom-1	Atom-2	Interatomic distance (Å)	Clash overlap (Å)
5:A:798:HOH:O	5:A:798:HOH:O[10_444]	1.83	0.37
5:A:725:HOH:O	5:A:772:HOH:O[5_554]	1.98	0.22
1:A:167:ASP:OD1	5:A:687:HOH:O[10_444]	2.12	0.08



## 5.3 Torsion angles [i](#)

### 5.3.1 Protein backbone [i](#)

In the following table, the Percentiles column shows the percent Ramachandran outliers of the chain as a percentile score with respect to all X-ray entries followed by that with respect to entries of similar resolution.

The Analysed column shows the number of residues for which the backbone conformation was analysed, and the total number of residues.

Mol	Chain	Analysed	Favoured	Allowed	Outliers	Percentiles	
1	A	376/409 (92%)	363 (96%)	12 (3%)	1 (0%)	44	28

All (1) Ramachandran outliers are listed below:

Mol	Chain	Res	Type
1	A	378	ASP

### 5.3.2 Protein sidechains [i](#)

In the following table, the Percentiles column shows the percent sidechain outliers of the chain as a percentile score with respect to all X-ray entries followed by that with respect to entries of similar resolution.

The Analysed column shows the number of residues for which the sidechain conformation was analysed, and the total number of residues.

Mol	Chain	Analysed	Rotameric	Outliers	Percentiles	
1	A	323/349 (93%)	312 (97%)	11 (3%)	42	25

All (11) residues with a non-rotameric sidechain are listed below:

Mol	Chain	Res	Type
1	A	126	LYS
1	A	133	THR
1	A	136	LYS
1	A	203	LYS
1	A	210	LEU
1	A	258	TRP
1	A	272	GLN
1	A	317	LYS
1	A	320	ASP
1	A	377	GLN

*Continued on next page...*

*Continued from previous page...*

Mol	Chain	Res	Type
1	A	438	LEU

Some sidechains can be flipped to improve hydrogen bonding and reduce clashes. All (1) such sidechains are listed below:

Mol	Chain	Res	Type
1	A	153	ASN

### 5.3.3 RNA [i](#)

There are no RNA molecules in this entry.

## 5.4 Non-standard residues in protein, DNA, RNA chains [i](#)

There are no non-standard protein/DNA/RNA residues in this entry.

## 5.5 Carbohydrates [i](#)

There are no carbohydrates in this entry.

## 5.6 Ligand geometry [i](#)

Of 4 ligands modelled in this entry, 2 are monoatomic - leaving 2 for Mogul analysis.

In the following table, the Counts columns list the number of bonds (or angles) for which Mogul statistics could be retrieved, the number of bonds (or angles) that are observed in the model and the number of bonds (or angles) that are defined in the Chemical Component Dictionary. The Link column lists molecule types, if any, to which the group is linked. The Z score for a bond length (or angle) is the number of standard deviations the observed value is removed from the expected value. A bond length (or angle) with  $|Z| > 2$  is considered an outlier worth inspection. RMSZ is the root-mean-square of all Z scores of the bond lengths (or angles).

Mol	Type	Chain	Res	Link	Bond lengths			Bond angles		
					Counts	RMSZ	# $ Z  > 2$	Counts	RMSZ	# $ Z  > 2$
3	DMS	A	503	-	3,3,3	0.47	0	3,3,3	0.59	0
4	1HQ	A	504	-	27,30,30	1.70	4 (14%)	29,43,43	1.99	9 (31%)

In the following table, the Chirals column lists the number of chiral outliers, the number of chiral centers analysed, the number of these observed in the model and the number defined in the Chemical Component Dictionary. Similar counts are reported in the Torsion and Rings columns.

'-' means no outliers of that kind were identified.

Mol	Type	Chain	Res	Link	Chirals	Torsions	Rings
3	DMS	A	503	-	-	0/0/0/0	0/0/0/0
4	1HQ	A	504	-	-	0/15/34/34	0/3/3/3

All (4) bond length outliers are listed below:

Mol	Chain	Res	Type	Atoms	Z	Observed(Å)	Ideal(Å)
4	A	504	1HQ	C4-N5	-2.13	1.31	1.34
4	A	504	1HQ	C13-C12	2.77	1.43	1.39
4	A	504	1HQ	C16-C15	4.07	1.44	1.38
4	A	504	1HQ	C23-N28	4.69	1.42	1.33

All (9) bond angle outliers are listed below:

Mol	Chain	Res	Type	Atoms	Z	Observed(°)	Ideal(°)
4	A	504	1HQ	C3-C2-C1	-4.56	114.50	120.35
4	A	504	1HQ	O22-C21-C20	-4.05	103.45	111.99
4	A	504	1HQ	C1-C6-N5	-3.54	118.65	123.71
4	A	504	1HQ	F18-C15-C16	-2.83	115.75	118.98
4	A	504	1HQ	C14-C13-C12	-2.57	117.29	120.30
4	A	504	1HQ	C17-C12-N9	-2.00	113.72	120.16
4	A	504	1HQ	C13-C12-C17	2.32	122.39	119.66
4	A	504	1HQ	C6-N5-C4	2.76	122.30	117.42
4	A	504	1HQ	C2-C1-C6	3.88	121.83	117.01

There are no chirality outliers.

There are no torsion outliers.

There are no ring outliers.

1 monomer is involved in 1 short contact:

Mol	Chain	Res	Type	Clashes	Symm-Clashes
4	A	504	1HQ	1	0

## 5.7 Other polymers [i](#)

There are no such residues in this entry.

## 5.8 Polymer linkage issues [i](#)

There are no chain breaks in this entry.

## 6 Fit of model and data ⓘ

### 6.1 Protein, DNA and RNA chains ⓘ

In the following table, the column labelled ‘#RSRZ> 2’ contains the number (and percentage) of RSRZ outliers, followed by percent RSRZ outliers for the chain as percentile scores relative to all X-ray entries and entries of similar resolution. The OWAB column contains the minimum, median, 95<sup>th</sup> percentile and maximum values of the occupancy-weighted average B-factor per residue. The column labelled ‘Q< 0.9’ lists the number of (and percentage) of residues with an average occupancy less than 0.9.

Mol	Chain	Analysed	<RSRZ>	#RSRZ>2	OWAB(Å <sup>2</sup> )	Q<0.9
1	A	379/409 (92%)	0.05	35 (9%) 10 7	20, 32, 76, 119	19 (5%)

All (35) RSRZ outliers are listed below:

Mol	Chain	Res	Type	RSRZ
1	A	315	THR	6.0
1	A	335	THR	5.7
1	A	334	GLY	4.4
1	A	340	ILE	4.3
1	A	59	SER	4.3
1	A	331	TRP	4.2
1	A	338	TRP	4.0
1	A	377	GLN	4.0
1	A	336	THR	3.9
1	A	378	ASP	3.5
1	A	314	SER	3.4
1	A	339	ASN	3.4
1	A	61	VAL	3.3
1	A	317	LYS	3.1
1	A	333	ALA	3.1
1	A	337	PRO	3.1
1	A	425	GLU	3.1
1	A	330	CYS	3.0
1	A	58	GLY	3.0
1	A	374	ALA	3.0
1	A	380	CYS	3.0
1	A	318	PHE	2.9
1	A	218	ALA	2.7
1	A	134	GLN	2.7
1	A	423	HIS	2.7
1	A	376	SER	2.7
1	A	316	GLU	2.7

*Continued on next page...*

*Continued from previous page...*

Mol	Chain	Res	Type	RSRZ
1	A	313	SER	2.7
1	A	375	THR	2.6
1	A	320	ASP	2.6
1	A	424	ASP	2.4
1	A	332	GLN	2.4
1	A	171	ILE	2.2
1	A	371	GLU	2.1
1	A	206	HIS	2.1

## 6.2 Non-standard residues in protein, DNA, RNA chains [i](#)

There are no non-standard protein/DNA/RNA residues in this entry.

## 6.3 Carbohydrates [i](#)

There are no carbohydrates in this entry.

## 6.4 Ligands [i](#)

In the following table, the Atoms column lists the number of modelled atoms in the group and the number defined in the chemical component dictionary. LLDF column lists the quality of electron density of the group with respect to its neighbouring residues in protein, DNA or RNA chains. The B-factors column lists the minimum, median, 95<sup>th</sup> percentile and maximum values of B factors of atoms in the group. The column labelled 'Q< 0.9' lists the number of atoms with occupancy less than 0.9.

Mol	Type	Chain	Res	Atoms	RSCC	RSR	LLDF	B-factors( $\text{\AA}^2$ )	Q<0.9
3	DMS	A	503	4/4	0.98	0.09	1.47	62,63,64,65	0
2	NA	A	502	1/1	0.95	0.18	1.02	49,49,49,49	0
4	1HQ	A	504	28/28	0.98	0.12	0.20	23,27,31,31	0
2	NA	A	501	1/1	0.95	0.04	-	51,51,51,51	0

## 6.5 Other polymers [i](#)

There are no such residues in this entry.