



Full wwPDB X-ray Structure Validation Report ⓘ

Sep 10, 2017 – 07:01 PM EDT

PDB ID : 5J2P
Title : HIV-1 reverse transcriptase in complex with DNA that has incorporated EFdA-MP at the P-(post-translocation) site and a second EFdA-MP at the N-(pre-translocation) site
Authors : Salie, Z.L.; Kirby, K.A.; Sarafianos, S.G.
Deposited on : unknown
Resolution : 2.53 Å(reported)

This is a Full wwPDB X-ray Structure Validation Report for a publicly released PDB entry.

We welcome your comments at validation@mail.wwpdb.org

A user guide is available at

<http://wwpdb.org/validation/2016/XrayValidationReportHelp>

with specific help available everywhere you see the ⓘ symbol.

The following versions of software and data (see [references ⓘ](#)) were used in the production of this report:

MolProbity : 4.02b-467
Mogul : 1.7.2 (RC1), CSD as538be (2017)
Xtriage (Phenix) : 1.9-1692
EDS : rb-20029824
Percentile statistics : 20161228.v01 (using entries in the PDB archive December 28th 2016)
Refmac : 5.8.0135
CCP4 : 6.5.0
Ideal geometry (proteins) : Engh & Huber (2001)
Ideal geometry (DNA, RNA) : Parkinson et al. (1996)
Validation Pipeline (wwPDB-VP) : rb-20029824

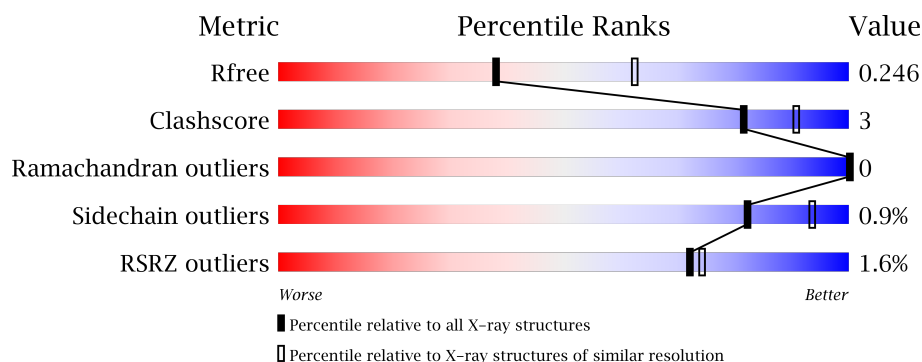
1 Overall quality at a glance ⓘ

The following experimental techniques were used to determine the structure:

X-RAY DIFFRACTION

The reported resolution of this entry is 2.53 Å.

Percentile scores (ranging between 0-100) for global validation metrics of the entry are shown in the following graphic. The table shows the number of entries on which the scores are based.



Metric	Whole archive (#Entries)	Similar resolution (#Entries, resolution range(Å))
R_{free}	100719	4636 (2.54-2.50)
Clashscore	112137	5382 (2.54-2.50)
Ramachandran outliers	110173	5282 (2.54-2.50)
Sidechain outliers	110143	5284 (2.54-2.50)
RSRZ outliers	101464	4669 (2.54-2.50)

The table below summarises the geometric issues observed across the polymeric chains and their fit to the electron density. The red, orange, yellow and green segments on the lower bar indicate the fraction of residues that contain outliers for ≥ 3 , 2, 1 and 0 types of geometric quality criteria. A grey segment represents the fraction of residues that are not modelled. The numeric value for each fraction is indicated below the corresponding segment, with a dot representing fractions $\leq 5\%$. The upper red bar (where present) indicates the fraction of residues that have poor fit to the electron density. The numeric value is given above the bar.

Mol	Chain	Length	Quality of chain
1	A	560	<div> <div>0.1%</div> <div>90%</div> <div>10%</div> </div>
2	B	440	<div> <div>2%</div> <div>84%</div> <div>7%</div> <div>9%</div> </div>
3	P	22	<div> <div>55%</div> <div>23%</div> <div>23%</div> </div>
4	T	27	<div> <div>81%</div> <div>7%</div> <div>11%</div> </div>

The following table lists non-polymeric compounds, carbohydrate monomers and non-standard residues in protein, DNA, RNA chains that are outliers for geometric or electron-density-fit crite-

ria:

Mol	Type	Chain	Res	Chirality	Geometry	Clashes	Electron density
5	MG	A	601	-	-	-	X

2 Entry composition [i](#)

There are 7 unique types of molecules in this entry. The entry contains 9160 atoms, of which 0 are hydrogens and 0 are deuteriums.

In the tables below, the ZeroOcc column contains the number of atoms modelled with zero occupancy, the AltConf column contains the number of residues with at least one atom in alternate conformation and the Trace column contains the number of residues modelled with at most 2 atoms.

- Molecule 1 is a protein called reverse transcriptase, p66 domain.

Mol	Chain	Residues	Atoms					ZeroOcc	AltConf	Trace
1	A	558	Total	C	N	O	S	14	1	0
			4547	2938	760	841	8			

There are 2 discrepancies between the modelled and reference sequences:

Chain	Residue	Modelled	Actual	Comment	Reference
A	258	CYS	GLN	engineered mutation	UNP P04585
A	280	SER	CYS	engineered mutation	UNP P04585

- Molecule 2 is a protein called reverse transcriptase, p51 domain.

Mol	Chain	Residues	Atoms					ZeroOcc	AltConf	Trace
2	B	400	Total	C	N	O	S	13	0	0
			3300	2143	551	600	6			

There is a discrepancy between the modelled and reference sequences:

Chain	Residue	Modelled	Actual	Comment	Reference
B	280	SER	CYS	engineered mutation	UNP P04585

- Molecule 3 is a DNA chain called DNA (5'-D(*AP*CP*AP*GP*TP*CP*CP*CP*TP*GP*TP*TP*CP*GP*GP*(MRG)P*CP*GP*CP*CP*(6FM)P*(6FM))-3').

Mol	Chain	Residues	Atoms					ZeroOcc	AltConf	Trace
3	P	17	Total	C	N	O	P	0	0	0
			349	166	59	106	17			

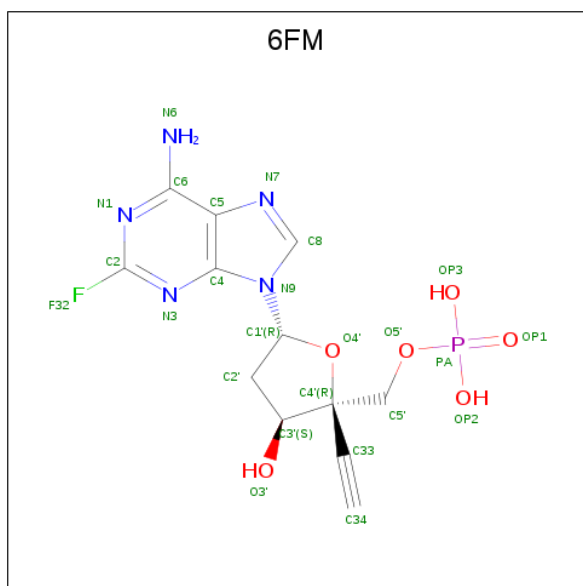
- Molecule 4 is a DNA chain called DNA (27-MER).

Mol	Chain	Residues	Atoms					ZeroOcc	AltConf	Trace
4	T	24	Total	C	N	O	P	0	0	0
			495	234	96	142	23			

- Molecule 5 is MAGNESIUM ION (three-letter code: MG) (formula: Mg).

Mol	Chain	Residues	Atoms		ZeroOcc	AltConf
5	A	1	Total	Mg	0	0
			1	1		

- Molecule 6 is 2'-deoxy-4'-ethynyl-2-fluoroadenosine 5'-(dihydrogen phosphate) (three-letter code: 6FM) (formula: C₁₂H₁₃FN₅O₆P).

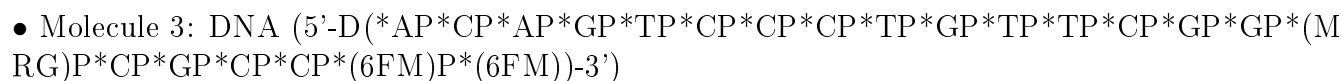


Mol	Chain	Residues	Atoms						ZeroOcc	AltConf
6	A	1	Total	C	F	N	O	P	0	0
			24	12	1	5	5	1		
6	P	1	Total	C	F	N	O	P	0	0
			24	12	1	5	5	1		

- Molecule 7 is water.

Mol	Chain	Residues	Atoms		ZeroOcc	AltConf
7	A	229	Total	O	0	0
			229	229		
7	B	146	Total	O	0	0
			146	146		
7	P	17	Total	O	0	0
			17	17		
7	T	28	Total	O	0	0
			28	28		

- Molecule 1: reverse transcriptase, p66 domain



4 Data and refinement statistics

Property	Value	Source
Space group	C 2 2 21	Depositor
Cell constants a, b, c, α , β , γ	165.98Å 170.18Å 99.69Å 90.00° 90.00° 90.00°	Depositor
Resolution (Å)	63.78 – 2.53 63.78 – 2.53	Depositor EDS
% Data completeness (in resolution range)	98.8 (63.78-2.53) 98.8 (63.78-2.53)	Depositor EDS
R_{merge}	0.10	Depositor
R_{sym}	(Not available)	Depositor
$\langle I/\sigma(I) \rangle$ ¹	1.04 (at 2.51Å)	Xtriage
Refinement program	PHENIX	Depositor
R, R_{free}	0.193 , 0.246 0.191 , 0.246	Depositor DCC
R_{free} test set	2356 reflections (5.03%)	DCC
Wilson B-factor (Å ²)	42.1	Xtriage
Anisotropy	0.311	Xtriage
Bulk solvent k_{sol} (e/Å ³), B_{sol} (Å ²)	0.29 , 36.0	EDS
L-test for twinning ²	$\langle L \rangle = 0.50$, $\langle L^2 \rangle = 0.33$	Xtriage
Estimated twinning fraction	0.018 for -k,-h,-l	Xtriage
F_o, F_c correlation	0.94	EDS
Total number of atoms	9160	wwPDB-VP
Average B, all atoms (Å ²)	51.0	wwPDB-VP

Xtriage's analysis on translational NCS is as follows: *The largest off-origin peak in the Patterson function is 3.01% of the height of the origin peak. No significant pseudotranslation is detected.*

¹Intensities estimated from amplitudes.

²Theoretical values of $\langle |L| \rangle$, $\langle L^2 \rangle$ for acentric reflections are 0.5, 0.333 respectively for untwinned datasets, and 0.375, 0.2 for perfectly twinned datasets.

5 Model quality [i](#)

5.1 Standard geometry [i](#)

Bond lengths and bond angles in the following residue types are not validated in this section: 6FM, MRG, MG

The Z score for a bond length (or angle) is the number of standard deviations the observed value is removed from the expected value. A bond length (or angle) with $|Z| > 5$ is considered an outlier worth inspection. RMSZ is the root-mean-square of all Z scores of the bond lengths (or angles).

Mol	Chain	Bond lengths		Bond angles	
		RMSZ	$\# Z > 5$	RMSZ	$\# Z > 5$
1	A	0.24	0/4667	0.43	0/6339
2	B	0.24	0/3390	0.41	0/4603
3	P	0.45	0/358	0.90	0/547
4	T	0.50	0/556	0.82	0/858
All	All	0.28	0/8971	0.49	0/12347

There are no bond length outliers.

There are no bond angle outliers.

There are no chirality outliers.

There are no planarity outliers.

5.2 Too-close contacts [i](#)

In the following table, the Non-H and H(model) columns list the number of non-hydrogen atoms and hydrogen atoms in the chain respectively. The H(added) column lists the number of hydrogen atoms added and optimized by MolProbity. The Clashes column lists the number of clashes within the asymmetric unit, whereas Symm-Clashes lists symmetry related clashes.

Mol	Chain	Non-H	H(model)	H(added)	Clashes	Symm-Clashes
1	A	4547	0	4603	32	0
2	B	3300	0	3337	15	0
3	P	349	0	196	7	0
4	T	495	0	270	1	0
5	A	1	0	0	0	0
6	A	24	0	0	0	0
6	P	24	0	0	1	0
7	A	229	0	0	3	0
7	B	146	0	0	2	0

Continued on next page...

Continued from previous page...

Mol	Chain	Non-H	H(model)	H(added)	Clashes	Symm-Clashes
7	P	17	0	0	0	0
7	T	28	0	0	0	0
All	All	9160	0	8406	51	0

The all-atom clashscore is defined as the number of clashes found per 1000 atoms (including hydrogen atoms). The all-atom clashscore for this structure is 3.

All (51) close contacts within the same asymmetric unit are listed below, sorted by their clash magnitude.

Atom-1	Atom-2	Interatomic distance (Å)	Clash overlap (Å)
1:A:255:ASN:HB2	1:A:289:LEU:HB3	1.80	0.63
3:P:816:DG:H2'	3:P:817:MRG:C8	2.31	0.60
1:A:317:VAL:HG23	1:A:349:LEU:HD23	1.85	0.59
1:A:181:TYR:HB2	1:A:188:TYR:HB3	1.88	0.56
1:A:260:LEU:HD21	1:A:303:LEU:HD13	1.88	0.54
2:B:104:LYS:NZ	7:B:508:HOH:O	2.41	0.53
4:T:713:DC:H2'	4:T:714:DG:C8	2.45	0.52
2:B:291:GLU:OE2	7:B:501:HOH:O	2.18	0.52
1:A:498:ASP:OD1	7:A:701:HOH:O	2.20	0.49
1:A:469:LEU:HD12	1:A:477:THR:HG22	1.95	0.49
1:A:19:PRO:HG3	1:A:80:LEU:HB2	1.95	0.48
2:B:66:LYS:HG3	2:B:67:ASP:H	1.77	0.48
2:B:332:GLN:HB2	2:B:336:GLN:HB2	1.95	0.48
1:A:458:VAL:HG22	1:A:548:VAL:HB	1.96	0.48
2:B:115:TYR:HB3	2:B:149:LEU:HB2	1.96	0.47
2:B:59:PRO:HG2	2:B:76:ASP:HB3	1.95	0.47
1:A:60:VAL:HG12	1:A:75:VAL:HG22	1.95	0.46
1:A:405:TYR:CE2	1:A:407:GLN:HB2	2.51	0.46
2:B:73:LYS:NZ	2:B:146:TYR:OH	2.48	0.46
1:A:282:LEU:HB3	1:A:293:ILE:HG21	1.97	0.46
1:A:266:TRP:CE2	3:P:820:DC:H4'	2.51	0.46
2:B:365:VAL:O	2:B:369:THR:HG23	2.16	0.46
1:A:58:THR:HG21	1:A:77:PHE:CD1	2.51	0.45
1:A:266:TRP:CD2	3:P:820:DC:H4'	2.52	0.45
1:A:397:THR:HG21	1:A:424:LYS:HA	1.99	0.45
2:B:337:TRP:O	2:B:354:TYR:N	2.46	0.45
1:A:258:CYS:HA	3:P:817:MRG:H231	1.98	0.45
2:B:321:PRO:O	2:B:385:LYS:NZ	2.38	0.45
1:A:96:HIS:CG	1:A:97:PRO:HD2	2.53	0.44
2:B:21:VAL:HB	2:B:59:PRO:HD3	1.99	0.44
1:A:114:ALA:HB1	1:A:160:PHE:CZ	2.53	0.44

Continued on next page...

Continued from previous page...

Atom-1	Atom-2	Interatomic distance (Å)	Clash overlap (Å)
1:A:219:LYS:NZ	7:A:707:HOH:O	2.35	0.44
1:A:288:ALA:HB3	1:A:291:GLU:HG3	1.99	0.44
2:B:195:ILE:HD11	2:B:199:ARG:NH2	2.33	0.44
3:P:821:DC:H2'	6:P:901:6FM:O4'	2.17	0.43
1:A:557:ARG:NH2	7:A:716:HOH:O	2.47	0.43
2:B:266:TRP:CZ3	2:B:426:TRP:HB3	2.53	0.43
1:A:114:ALA:HB1	1:A:160:PHE:CE1	2.54	0.42
1:A:325:LEU:HD12	1:A:385:LYS:HG3	2.01	0.42
2:B:387:PRO:HG2	2:B:389:PHE:CE1	2.54	0.42
2:B:54:ASN:HB3	2:B:143:ARG:HH21	1.84	0.42
3:P:816:DG:H2'	3:P:817:MRG:H8	2.00	0.42
1:A:429:LEU:HD11	1:A:506:ILE:HG22	2.02	0.41
1:A:490:GLY:O	1:A:528:LYS:NZ	2.40	0.41
1:A:475:GLN:HB3	1:A:501:TYR:CE2	2.55	0.41
1:A:136:ASN:C	1:A:138:GLU:H	2.24	0.41
1:A:19:PRO:HD3	1:A:80:LEU:HD13	2.03	0.40
1:A:195:ILE:O	1:A:199:ARG:HG3	2.21	0.40
1:A:259:LYS:HA	3:P:819:DG:H5'	2.03	0.40
1:A:395:LYS:HD3	1:A:414:TRP:CZ2	2.57	0.40
1:A:503:LEU:HD22	1:A:535:TRP:HB2	2.03	0.40

There are no symmetry-related clashes.

5.3 Torsion angles [i](#)

5.3.1 Protein backbone [i](#)

In the following table, the Percentiles column shows the percent Ramachandran outliers of the chain as a percentile score with respect to all X-ray entries followed by that with respect to entries of similar resolution.

The Analysed column shows the number of residues for which the backbone conformation was analysed, and the total number of residues.

Mol	Chain	Analysed	Favoured	Allowed	Outliers	Percentiles	
1	A	557/560 (100%)	536 (96%)	21 (4%)	0	100	100
2	B	394/440 (90%)	379 (96%)	15 (4%)	0	100	100
All	All	951/1000 (95%)	915 (96%)	36 (4%)	0	100	100

There are no Ramachandran outliers to report.

5.3.2 Protein sidechains [i](#)

In the following table, the Percentiles column shows the percent sidechain outliers of the chain as a percentile score with respect to all X-ray entries followed by that with respect to entries of similar resolution.

The Analysed column shows the number of residues for which the sidechain conformation was analysed, and the total number of residues.

Mol	Chain	Analysed	Rotameric	Outliers	Percentiles	
1	A	499/500 (100%)	494 (99%)	5 (1%)	80	92
2	B	363/400 (91%)	360 (99%)	3 (1%)	85	94
All	All	862/900 (96%)	854 (99%)	8 (1%)	82	93

All (8) residues with a non-rotameric sidechain are listed below:

Mol	Chain	Res	Type
1	A	211	ARG
1	A	219	LYS
1	A	277	ARG
1	A	292	VAL
1	A	415	GLU
2	B	77	PHE
2	B	122	GLU
2	B	169	GLU

Some sidechains can be flipped to improve hydrogen bonding and reduce clashes. There are no such sidechains identified.

5.3.3 RNA [i](#)

There are no RNA molecules in this entry.

5.4 Non-standard residues in protein, DNA, RNA chains [i](#)

1 non-standard protein/DNA/RNA residue is modelled in this entry.

In the following table, the Counts columns list the number of bonds (or angles) for which Mogul statistics could be retrieved, the number of bonds (or angles) that are observed in the model and the number of bonds (or angles) that are defined in the chemical component dictionary. The Link column lists molecule types, if any, to which the group is linked. The Z score for a bond length (or angle) is the number of standard deviations the observed value is removed from the expected value. A bond length (or angle) with $|Z| > 2$ is considered an outlier worth inspection. RMSZ is the root-mean-square of all Z scores of the bond lengths (or angles).

Mol	Type	Chain	Res	Link	Bond lengths			Bond angles		
					Counts	RMSZ	# Z > 2	Counts	RMSZ	# Z > 2
3	MRG	P	817	1,3,4	21,28,29	1.76	3 (14%)	24,39,42	1.47	4 (16%)

In the following table, the Chirals column lists the number of chiral outliers, the number of chiral centers analysed, the number of these observed in the model and the number defined in the chemical component dictionary. Similar counts are reported in the Torsion and Rings columns. '-' means no outliers of that kind were identified.

Mol	Type	Chain	Res	Link	Chirals	Torsions	Rings
3	MRG	P	817	1,3,4	-	0/8/26/27	0/3/3/3

All (3) bond length outliers are listed below:

Mol	Chain	Res	Type	Atoms	Z	Observed(Å)	Ideal(Å)
3	P	817	MRG	O5'-C5'	-3.18	1.40	1.44
3	P	817	MRG	C2-N2	3.27	1.39	1.34
3	P	817	MRG	O6-C6	4.53	1.36	1.24

All (4) bond angle outliers are listed below:

Mol	Chain	Res	Type	Atoms	Z	Observed(°)	Ideal(°)
3	P	817	MRG	C6-C5-C4	-5.31	115.56	120.84
3	P	817	MRG	C2'-C3'-C4'	-2.21	98.03	102.73
3	P	817	MRG	C22-C21-N2	2.07	116.98	111.46
3	P	817	MRG	C4-C5-N7	2.51	111.84	109.41

There are no chirality outliers.

There are no torsion outliers.

There are no ring outliers.

1 monomer is involved in 3 short contacts:

Mol	Chain	Res	Type	Clashes	Symm-Clashes
3	P	817	MRG	3	0

5.5 Carbohydrates

There are no carbohydrates in this entry.

5.6 Ligand geometry

Of 3 ligands modelled in this entry, 1 is monoatomic - leaving 2 for Mogul analysis.

In the following table, the Counts columns list the number of bonds (or angles) for which Mogul statistics could be retrieved, the number of bonds (or angles) that are observed in the model and the number of bonds (or angles) that are defined in the chemical component dictionary. The Link column lists molecule types, if any, to which the group is linked. The Z score for a bond length (or angle) is the number of standard deviations the observed value is removed from the expected value. A bond length (or angle) with $|Z| > 2$ is considered an outlier worth inspection. RMSZ is the root-mean-square of all Z scores of the bond lengths (or angles).

Mol	Type	Chain	Res	Link	Bond lengths			Bond angles		
					Counts	RMSZ	# $ Z > 2$	Counts	RMSZ	# $ Z > 2$
6	6FM	A	602	6	15,26,27	2.49	6 (40%)	20,39,42	3.29	7 (35%)
6	6FM	P	901	3,6	15,26,27	2.44	7 (46%)	20,39,42	3.35	7 (35%)

In the following table, the Chirals column lists the number of chiral outliers, the number of chiral centers analysed, the number of these observed in the model and the number defined in the chemical component dictionary. Similar counts are reported in the Torsion and Rings columns. '-' means no outliers of that kind were identified.

Mol	Type	Chain	Res	Link	Chirals	Torsions	Rings
6	6FM	A	602	6	-	0/8/37/38	0/3/3/3
6	6FM	P	901	3,6	-	0/8/37/38	0/3/3/3

All (13) bond length outliers are listed below:

Mol	Chain	Res	Type	Atoms	Z	Observed(Å)	Ideal(Å)
6	P	901	6FM	C2'-C3'	-3.15	1.45	1.53
6	A	602	6FM	C2'-C3'	-3.01	1.46	1.53
6	P	901	6FM	C4-N3	-2.17	1.31	1.34
6	P	901	6FM	C2-N3	2.16	1.33	1.31
6	A	602	6FM	C5-N7	2.43	1.44	1.35
6	P	901	6FM	C5-N7	2.47	1.44	1.35
6	A	602	6FM	C2-N3	2.67	1.34	1.31
6	A	602	6FM	C2-N1	3.09	1.34	1.31
6	P	901	6FM	C2-N1	3.28	1.34	1.31
6	A	602	6FM	C6-N6	4.36	1.45	1.34
6	P	901	6FM	C6-N6	4.38	1.45	1.34
6	P	901	6FM	O4'-C1'	5.13	1.50	1.42
6	A	602	6FM	O4'-C1'	5.58	1.50	1.42

All (14) bond angle outliers are listed below:

Mol	Chain	Res	Type	Atoms	Z	Observed(°)	Ideal(°)
6	P	901	6FM	N3-C2-N1	-7.09	120.90	130.36
6	A	602	6FM	N3-C2-N1	-6.85	121.22	130.36
6	A	602	6FM	C8-N7-C5	-5.67	104.67	113.66
6	P	901	6FM	C8-N7-C5	-5.64	104.73	113.66
6	P	901	6FM	C2'-C1'-N9	-5.08	109.40	115.61
6	A	602	6FM	C2'-C1'-N9	-3.72	111.06	115.61
6	A	602	6FM	N6-C6-N1	2.76	121.08	117.00
6	P	901	6FM	N6-C6-N1	2.78	121.10	117.00
6	A	602	6FM	F32-C2-N1	4.33	118.85	114.81
6	P	901	6FM	F32-C2-N3	4.49	118.99	114.81
6	A	602	6FM	F32-C2-N3	5.50	119.94	114.81
6	P	901	6FM	F32-C2-N1	5.69	120.11	114.81
6	P	901	6FM	N3-C4-N9	6.49	135.27	126.98
6	A	602	6FM	N3-C4-N9	7.34	136.36	126.98

There are no chirality outliers.

There are no torsion outliers.

There are no ring outliers.

1 monomer is involved in 1 short contact:

Mol	Chain	Res	Type	Clashes	Symm-Clashes
6	P	901	6FM	1	0

5.7 Other polymers [i](#)

There are no such residues in this entry.

5.8 Polymer linkage issues [i](#)

There are no chain breaks in this entry.

6 Fit of model and data [i](#)

6.1 Protein, DNA and RNA chains [i](#)

In the following table, the column labelled ‘#RSRZ> 2’ contains the number (and percentage) of RSRZ outliers, followed by percent RSRZ outliers for the chain as percentile scores relative to all X-ray entries and entries of similar resolution. The OWAB column contains the minimum, median, 95th percentile and maximum values of the occupancy-weighted average B-factor per residue. The column labelled ‘Q< 0.9’ lists the number of (and percentage) of residues with an average occupancy less than 0.9.

Mol	Chain	Analysed	<RSRZ>	#RSRZ>2	OWAB(Å ²)	Q<0.9
1	A	558/560 (99%)	-0.16	8 (1%) 75 77	30, 43, 77, 139	5 (0%)
2	B	400/440 (90%)	-0.04	8 (2%) 65 68	32, 50, 92, 120	3 (0%)
3	P	16/22 (72%)	-0.77	0 100 100	36, 53, 69, 74	0
4	T	24/27 (88%)	-0.70	0 100 100	37, 60, 71, 87	0
All	All	998/1049 (95%)	-0.13	16 (1%) 72 74	30, 47, 86, 139	8 (0%)

All (16) RSRZ outliers are listed below:

Mol	Chain	Res	Type	RSRZ
1	A	140	PRO	23.8
1	A	139	THR	8.0
2	B	94	ILE	4.0
1	A	136	ASN	3.4
2	B	419	THR	3.3
2	B	67	ASP	3.0
2	B	178	ILE	2.6
2	B	238	LYS	2.6
1	A	135	ILE	2.6
1	A	134	SER	2.5
1	A	25	PRO	2.3
1	A	68	SER	2.2
2	B	167	ILE	2.2
2	B	170	PRO	2.1
1	A	52	PRO	2.1
2	B	242	GLN	2.0

6.2 Non-standard residues in protein, DNA, RNA chains [i](#)

In the following table, the Atoms column lists the number of modelled atoms in the group and the number defined in the chemical component dictionary. LLDF column lists the quality of electron

density of the group with respect to its neighbouring residues in protein, DNA or RNA chains. The B-factors column lists the minimum, median, 95th percentile and maximum values of B factors of atoms in the group. The column labelled 'Q< 0.9' lists the number of atoms with occupancy less than 0.9.

Mol	Type	Chain	Res	Atoms	RSCC	RSR	LLDF	B-factors(Å ²)	Q<0.9
3	MRG	P	817	26/27	0.96	0.14	-	39,52,66,79	0

6.3 Carbohydrates [i](#)

There are no carbohydrates in this entry.

6.4 Ligands [i](#)

In the following table, the Atoms column lists the number of modelled atoms in the group and the number defined in the chemical component dictionary. LLDF column lists the quality of electron density of the group with respect to its neighbouring residues in protein, DNA or RNA chains. The B-factors column lists the minimum, median, 95th percentile and maximum values of B factors of atoms in the group. The column labelled 'Q< 0.9' lists the number of atoms with occupancy less than 0.9.

Mol	Type	Chain	Res	Atoms	RSCC	RSR	LLDF	B-factors(Å ²)	Q<0.9
5	MG	A	601	1/1	0.97	0.29	9.82	31,31,31,31	0
6	6FM	P	901	24/25	0.98	0.12	-0.19	34,38,56,58	0
6	6FM	A	602	24/25	0.97	0.12	-0.73	36,42,49,54	0

6.5 Other polymers [i](#)

There are no such residues in this entry.