



Full wwPDB X-ray Structure Validation Report ⓘ

Feb 14, 2017 – 06:26 pm GMT

PDB ID : 1J40
Title : Direct observation of photolysis-induced tertiary structural changes in human haemoglobin; Crystal structure of alpha(Ni)-beta(Fe-CO) hemoglobin (laser unphotolysed)
Authors : Adachi, S.; Park, S.-Y.; Tame, J.R.H.; Shiro, Y.; Shibayama, N.; RIKEN Structural Genomics/Proteomics Initiative (RSGI)
Deposited on : 2003-02-21
Resolution : 1.45 Å(reported)

This is a Full wwPDB X-ray Structure Validation Report for a publicly released PDB entry.

We welcome your comments at validation@mail.wwpdb.org

A user guide is available at

<http://wwpdb.org/validation/2016/XrayValidationReportHelp>

with specific help available everywhere you see the ⓘ symbol.

The following versions of software and data (see [references ⓘ](#)) were used in the production of this report:

MolProbity : 4.02b-467
Mogul : 1.7.2 (RC1), CSD as538be (2017)
Xtriage (Phenix) : **NOT EXECUTED**
EDS : **NOT EXECUTED**
Percentile statistics : 20161228.v01 (using entries in the PDB archive December 28th 2016)
Ideal geometry (proteins) : Engh & Huber (2001)
Ideal geometry (DNA, RNA) : Parkinson et al. (1996)
Validation Pipeline (wwPDB-VP) : recalc28949

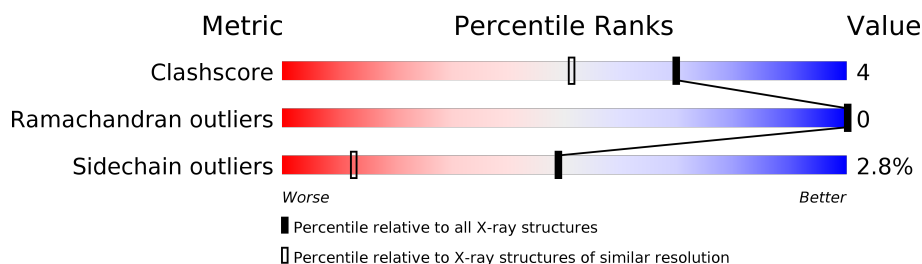
1 Overall quality at a glance

The following experimental techniques were used to determine the structure:

X-RAY DIFFRACTION

The reported resolution of this entry is 1.45 Å.

Percentile scores (ranging between 0-100) for global validation metrics of the entry are shown in the following graphic. The table shows the number of entries on which the scores are based.



Metric	Whole archive (#Entries)	Similar resolution (#Entries, resolution range(Å))
Clashscore	112137	1573 (1.48-1.44)
Ramachandran outliers	110173	1555 (1.48-1.44)
Sidechain outliers	110143	1555 (1.48-1.44)


The table below summarises the geometric issues observed across the polymeric chains and their fit to the electron density. The red, orange, yellow and green segments on the lower bar indicate the fraction of residues that contain outliers for ≥ 3 , 2, 1 and 0 types of geometric quality criteria. A grey segment represents the fraction of residues that are not modelled. The numeric value for each fraction is indicated below the corresponding segment, with a dot representing fractions $\leq 5\%$. The upper red bar (where present) indicates the fraction of residues that have poor fit to the electron density. The numeric value is given above the bar.

Note EDS was not executed.

Mol	Chain	Length	Quality of chain
1	A	141	96% ..
1	C	141	94% 5% .
1	E	141	91% 9%
1	G	141	94% 6%
2	B	146	86% 12% .
2	D	146	88% 12% .
2	F	146	87% 12% .

Continued on next page...

Continued from previous page...

Mol	Chain	Length	Quality of chain
2	H	146	 90%9%

The following table lists non-polymeric compounds, carbohydrate monomers and non-standard residues in protein, DNA, RNA chains that are outliers for geometric or electron-density-fit criteria:

Mol	Type	Chain	Res	Chirality	Geometry	Clashes	Electron density
5	CMO	D	148	-	-	X	-
6	2FU	D	3001	-	X	-	-
6	2FU	F	3002	-	X	-	-

2 Entry composition

There are 7 unique types of molecules in this entry. The entry contains 11364 atoms, of which 0 are hydrogens and 0 are deuteriums.

In the tables below, the ZeroOcc column contains the number of atoms modelled with zero occupancy, the AltConf column contains the number of residues with at least one atom in alternate conformation and the Trace column contains the number of residues modelled with at most 2 atoms.

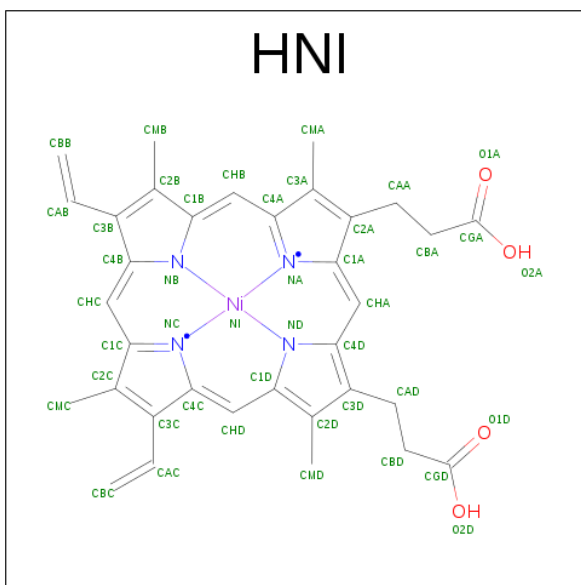
- Molecule 1 is a protein called Hemoglobin alpha Chain.

Mol	Chain	Residues	Atoms					ZeroOcc	AltConf	Trace
1	A	141	Total	C	N	O	S	0	0	0
			1069	685	187	194	3			
1	C	141	Total	C	N	O	S	0	0	0
			1069	685	187	194	3			
1	E	141	Total	C	N	O	S	0	0	0
			1069	685	187	194	3			
1	G	141	Total	C	N	O	S	0	0	0
			1069	685	187	194	3			

- Molecule 2 is a protein called Hemoglobin beta Chain.

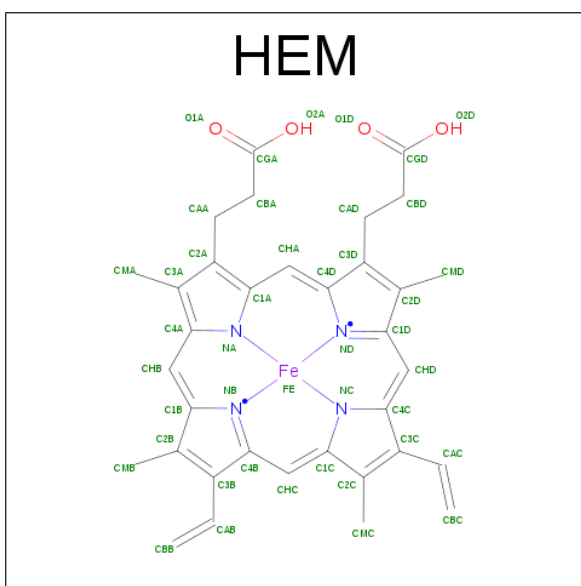
Mol	Chain	Residues	Atoms					ZeroOcc	AltConf	Trace
2	B	146	Total	C	N	O	S	0	0	0
			1123	724	195	201	3			
2	D	146	Total	C	N	O	S	0	0	0
			1123	724	195	201	3			
2	F	146	Total	C	N	O	S	0	0	0
			1123	724	195	201	3			
2	H	146	Total	C	N	O	S	0	0	0
			1123	724	195	201	3			

- Molecule 3 is PROTOPORPHYRIN IX CONTAINING NI(II) (three-letter code: HNI) (formula: $C_{34}H_{32}N_4NiO_4$).



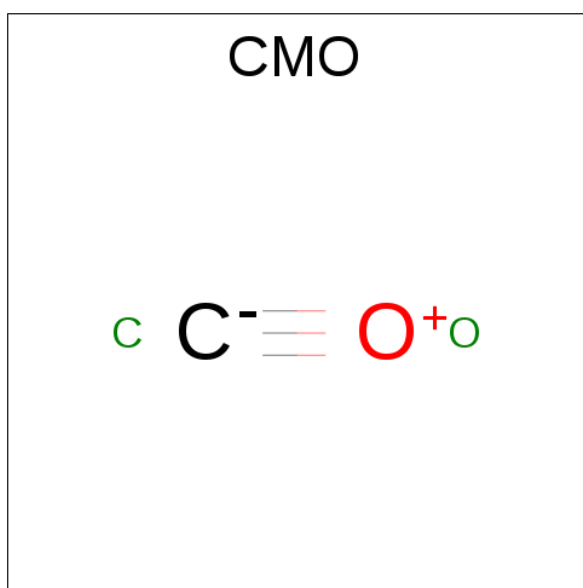
Mol	Chain	Residues	Atoms					ZeroOcc	AltConf
3	A	1	Total 43	C 34	N 4	Ni 1	O 4	0	0
3	C	1	Total 43	C 34	N 4	Ni 1	O 4	0	0
3	E	1	Total 43	C 34	N 4	Ni 1	O 4	0	0
3	G	1	Total 43	C 34	N 4	Ni 1	O 4	0	0

- Molecule 4 is PROTOPORPHYRIN IX CONTAINING FE (three-letter code: HEM) (formula: $C_{34}H_{32}FeN_4O_4$).



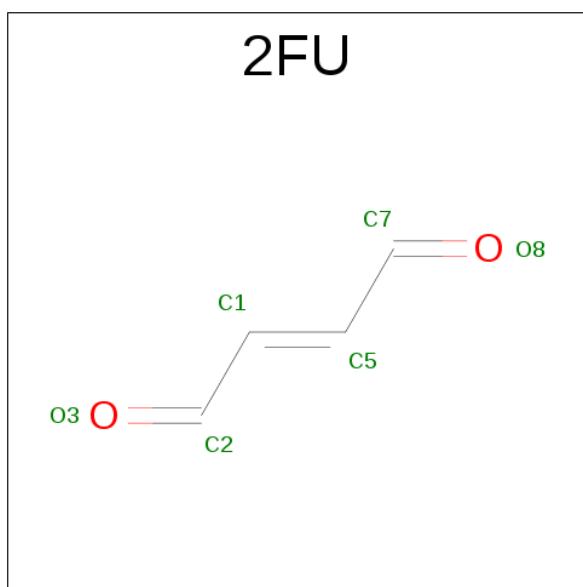
Mol	Chain	Residues	Atoms					ZeroOcc	AltConf
4	B	1	Total	C	Fe	N	O	0	0
			43	34	1	4	4		
4	D	1	Total	C	Fe	N	O	0	0
			43	34	1	4	4		
4	F	1	Total	C	Fe	N	O	0	0
			43	34	1	4	4		
4	H	1	Total	C	Fe	N	O	0	0
			43	34	1	4	4		

- Molecule 5 is CARBON MONOXIDE (three-letter code: CMO) (formula: CO).



Mol	Chain	Residues	Atoms			ZeroOcc	AltConf
5	B	1	Total	C	O	0	0
			2	1	1		
5	D	1	Total	C	O	0	0
			2	1	1		
5	F	1	Total	C	O	0	0
			2	1	1		
5	H	1	Total	C	O	0	0
			2	1	1		

- Molecule 6 is BUT-2-ENEDIAL (three-letter code: 2FU) (formula: C₄H₄O₂).



Mol	Chain	Residues	Atoms			ZeroOcc	AltConf
6	D	1	Total	C	O	0	0
			6	4	2		
6	F	1	Total	C	O	0	0
			6	4	2		

- Molecule 7 is water.

Mol	Chain	Residues	Atoms		ZeroOcc	AltConf
7	A	350	Total	O	0	0
			350	350		
7	B	284	Total	O	0	0
			284	284		
7	C	281	Total	O	0	0
			281	281		
7	D	310	Total	O	0	0
			310	310		
7	E	248	Total	O	0	0
			248	248		
7	F	278	Total	O	0	0
			278	278		
7	G	249	Total	O	0	0
			249	249		
7	H	232	Total	O	0	0
			232	232		

3 Residue-property plots [i](#)

These plots are drawn for all protein, RNA and DNA chains in the entry. The first graphic for a chain summarises the proportions of the various outlier classes displayed in the second graphic. The second graphic shows the sequence view annotated by issues in geometry and electron density. Residues are color-coded according to the number of geometric quality criteria for which they contain at least one outlier: green = 0, yellow = 1, orange = 2 and red = 3 or more. A red dot above a residue indicates a poor fit to the electron density ($RSRZ > 2$). Stretches of 2 or more consecutive residues without any outlier are shown as a green connector. Residues present in the sample, but not in the model, are shown in grey.

Note EDS was not executed.

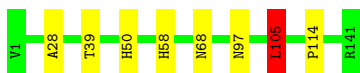
- Molecule 1: Hemoglobin alpha Chain

Chain A:  96% ..



- Molecule 1: Hemoglobin alpha Chain

Chain C:  94% 5% .



- Molecule 1: Hemoglobin alpha Chain

Chain E:  91% 9%



- Molecule 1: Hemoglobin alpha Chain

Chain G:  94% 6%



- Molecule 2: Hemoglobin beta Chain

Chain B:  86% 12% .



- Molecule 2: Hemoglobin beta Chain

Chain D:

88%

12%

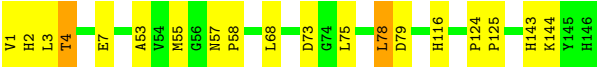


● Molecule 2: Hemoglobin beta Chain

Chain F:

87%

12%

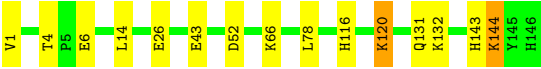


● Molecule 2: Hemoglobin beta Chain

Chain H:

90%

9%



4 Data and refinement statistics

Xtriage (Phenix) and EDS were not executed - this section is therefore incomplete.

Property	Value	Source
Space group	P 1 21 1	Depositor
Cell constants a, b, c, α , β , γ	64.71Å 94.86Å 99.73Å 90.00° 101.97° 90.00°	Depositor
Resolution (Å)	20.00 – 1.45	Depositor
% Data completeness (in resolution range)	95.9 (20.00-1.45)	Depositor
R_{merge}	0.06	Depositor
R_{sym}	(Not available)	Depositor
Refinement program	REFMAC 5.1.22	Depositor
R, R_{free}	0.165 , 0.197	Depositor
Estimated twinning fraction	No twinning to report.	Xtriage
Total number of atoms	11364	wwPDB-VP
Average B, all atoms (Å ²)	16.0	wwPDB-VP

5 Model quality

5.1 Standard geometry

Bond lengths and bond angles in the following residue types are not validated in this section: CMO, HNI, 2FU, HEM

The Z score for a bond length (or angle) is the number of standard deviations the observed value is removed from the expected value. A bond length (or angle) with $|Z| > 5$ is considered an outlier worth inspection. RMSZ is the root-mean-square of all Z scores of the bond lengths (or angles).

Mol	Chain	Bond lengths		Bond angles	
		RMSZ	# Z >5	RMSZ	# Z >5
1	A	0.44	0/1097	0.68	0/1491
1	C	0.44	0/1097	0.68	1/1491 (0.1%)
1	E	0.41	0/1097	0.66	0/1491
1	G	0.44	0/1097	0.64	0/1491
2	B	0.49	0/1153	0.70	2/1566 (0.1%)
2	D	0.43	0/1153	0.69	2/1566 (0.1%)
2	F	0.44	0/1153	0.71	2/1566 (0.1%)
2	H	0.45	0/1153	0.68	1/1566 (0.1%)
All	All	0.44	0/9000	0.68	8/12228 (0.1%)

There are no bond length outliers.

All (8) bond angle outliers are listed below:

Mol	Chain	Res	Type	Atoms	Z	Observed(°)	Ideal(°)
2	F	79	ASP	CB-CG-OD2	6.90	124.51	118.30
2	H	52	ASP	CB-CG-OD2	6.40	124.06	118.30
2	D	52	ASP	CB-CG-OD2	6.07	123.76	118.30
2	B	73	ASP	CB-CG-OD2	5.56	123.30	118.30
2	D	99	ASP	CB-CG-OD1	5.49	123.24	118.30
2	F	73	ASP	CB-CG-OD2	5.19	122.97	118.30
1	C	105	LEU	CA-CB-CG	5.10	127.02	115.30
2	B	32	LEU	CB-CG-CD2	5.03	119.55	111.00

There are no chirality outliers.

There are no planarity outliers.

5.2 Too-close contacts ⓘ

In the following table, the Non-H and H(model) columns list the number of non-hydrogen atoms and hydrogen atoms in the chain respectively. The H(added) column lists the number of hydrogen atoms added and optimized by MolProbity. The Clashes column lists the number of clashes within the asymmetric unit, whereas Symm-Clashes lists symmetry related clashes.

Mol	Chain	Non-H	H(model)	H(added)	Clashes	Symm-Clashes
1	A	1069	0	1073	3	0
1	C	1069	0	1073	7	0
1	E	1069	0	1073	7	0
1	G	1069	0	1073	6	0
2	B	1123	0	1116	16	0
2	D	1123	0	1116	10	0
2	F	1123	0	1116	11	0
2	H	1123	0	1116	12	0
3	A	43	0	30	0	0
3	C	43	0	30	1	0
3	E	43	0	30	1	0
3	G	43	0	30	0	0
4	B	43	0	30	2	0
4	D	43	0	30	5	0
4	F	43	0	30	2	0
4	H	43	0	30	1	0
5	B	2	0	0	0	0
5	D	2	0	0	4	0
5	F	2	0	0	0	0
5	H	2	0	0	0	0
6	D	6	0	2	0	0
6	F	6	0	2	0	0
7	A	350	0	0	2	0
7	B	284	0	0	6	0
7	C	281	0	0	3	0
7	D	310	0	0	2	0
7	E	248	0	0	1	0
7	F	278	0	0	2	0
7	G	249	0	0	5	0
7	H	232	0	0	5	0
All	All	11364	0	9000	75	0

The all-atom clashscore is defined as the number of clashes found per 1000 atoms (including hydrogen atoms). The all-atom clashscore for this structure is 4.

All (75) close contacts within the same asymmetric unit are listed below, sorted by their clash magnitude.

Atom-1	Atom-2	Interatomic distance (Å)	Clash overlap (Å)
2:H:26:GLU:HG2	7:H:237:HOH:O	1.55	1.05
1:G:99:LYS:HG3	7:G:360:HOH:O	1.59	1.02
2:B:139:ASN:HB3	7:B:309:HOH:O	1.60	0.99
4:D:147:HEM:NC	5:D:148:CMO:C	2.35	0.89
7:A:268:HOH:O	2:D:40:ARG:HD3	1.72	0.89
1:E:45:HIS:HE1	7:E:363:HOH:O	1.56	0.88
1:A:113:LEU:HB3	1:A:116:GLU:HG2	1.59	0.84
2:F:4:THR:HG21	7:F:3090:HOH:O	1.77	0.84
4:D:147:HEM:ND	5:D:148:CMO:C	2.45	0.79
2:F:4:THR:HG22	2:F:7:GLU:H	1.49	0.76
4:H:147:HEM:HMC2	4:H:147:HEM:HBC2	1.74	0.70
1:C:50:HIS:HD2	7:C:369:HOH:O	1.75	0.70
1:G:114:PRO:O	2:H:116:HIS:HE1	1.80	0.64
4:D:147:HEM:HMC2	4:D:147:HEM:HBC2	1.80	0.64
2:F:143:HIS:HD2	2:F:144:LYS:NZ	1.95	0.64
2:H:26:GLU:HG2	7:H:163:HOH:O	1.99	0.62
1:C:114:PRO:O	2:D:116:HIS:HE1	1.83	0.61
2:B:139:ASN:HB3	7:B:280:HOH:O	2.00	0.60
4:D:147:HEM:NB	5:D:148:CMO:C	2.65	0.59
1:A:39:THR:HG22	1:A:97:ASN:HD22	1.67	0.59
7:G:390:HOH:O	2:H:120:LYS:HE2	2.03	0.59
2:H:116:HIS:HD2	7:H:151:HOH:O	1.87	0.57
2:B:73:ASP:HB3	7:B:389:HOH:O	2.04	0.57
2:B:77:HIS:HE1	7:B:337:HOH:O	1.88	0.56
2:D:116:HIS:HD2	7:D:3002:HOH:O	1.89	0.55
4:D:147:HEM:NA	5:D:148:CMO:C	2.69	0.55
1:E:119:PRO:HG2	2:F:55:MET:HG3	1.87	0.55
2:B:6:GLU:HG3	7:B:428:HOH:O	2.07	0.54
2:H:143:HIS:ND1	7:H:361:HOH:O	2.33	0.54
1:G:35:SER:HB3	2:H:131:GLN:HG3	1.89	0.54
1:E:39:THR:HG22	1:E:97:ASN:HD22	1.74	0.53
1:E:14:TRP:O	1:E:17:VAL:HB	2.09	0.52
2:B:73:ASP:HB3	7:B:224:HOH:O	2.10	0.52
2:B:20:VAL:HG13	2:B:68:LEU:HB3	1.92	0.51
4:F:147:HEM:HMC2	4:F:147:HEM:HBC2	1.92	0.51
1:E:58:HIS:HE1	3:E:142:HNI:CHA	2.25	0.49
1:G:16:LYS:NZ	7:G:333:HOH:O	2.46	0.49
2:F:143:HIS:HD2	2:F:144:LYS:HZ1	1.59	0.49
2:F:75:LEU:HA	2:F:78:LEU:HD13	1.95	0.48
2:B:24:GLY:HA2	2:B:68:LEU:HG	1.95	0.48
2:B:20:VAL:CG1	2:B:68:LEU:HB3	2.44	0.48
2:F:1:VAL:HG22	7:F:3122:HOH:O	2.13	0.48

Continued on next page...

Continued from previous page...

Atom-1	Atom-2	Interatomic distance (Å)	Clash overlap (Å)
1:G:39:THR:HG22	1:G:97:ASN:HD22	1.79	0.47
2:D:11:VAL:CG1	2:D:75:LEU:HD22	2.45	0.46
7:G:380:HOH:O	2:H:132:LYS:HE3	2.14	0.46
2:F:124:PRO:HB2	2:F:125:PRO:HD3	1.97	0.46
1:G:14:TRP:O	1:G:17:VAL:HB	2.15	0.46
2:H:144:LYS:HD3	7:H:361:HOH:O	2.15	0.46
1:C:58:HIS:HE1	3:C:142:HNI:CHA	2.29	0.46
2:B:102:ASN:HB3	4:B:147:HEM:HMC1	1.97	0.45
2:D:51:PRO:O	2:D:55:MET:HG2	2.15	0.45
2:F:75:LEU:HD23	2:F:78:LEU:HD11	1.99	0.45
1:E:114:PRO:HA	2:F:116:HIS:CD2	2.52	0.45
2:F:53:ALA:O	2:F:57:ASN:HB2	2.16	0.44
2:B:6:GLU:CD	2:B:6:GLU:H	2.21	0.44
1:C:39:THR:HG22	1:C:97:ASN:HD22	1.83	0.44
4:F:147:HEM:HBB2	4:F:147:HEM:HHC	2.00	0.44
2:B:63:HIS:CE1	4:B:147:HEM:HBD2	2.54	0.43
2:B:19:ASN:ND2	2:B:22:GLU:HB2	2.33	0.43
1:E:76:MET:N	1:E:77:PRO:CD	2.82	0.43
2:H:4:THR:CG2	2:H:6:GLU:HG2	2.49	0.43
1:C:28:ALA:CB	1:C:105:LEU:HD13	2.48	0.42
7:A:268:HOH:O	2:D:40:ARG:CD	2.48	0.42
1:C:68:ASN:HB3	7:C:256:HOH:O	2.20	0.42
2:H:66:LYS:HE3	2:H:66:LYS:HB2	1.89	0.42
2:B:53:ALA:O	2:B:57:ASN:HB2	2.20	0.42
2:D:23:VAL:HG12	2:D:68:LEU:HD11	2.02	0.42
1:A:16:LYS:HA	1:A:16:LYS:HD2	1.93	0.41
2:B:104:ARG:CG	2:B:104:ARG:HH21	2.32	0.41
2:B:1:VAL:HG11	2:B:136:GLY:HA3	2.03	0.41
2:D:104:ARG:HD2	7:D:3220:HOH:O	2.20	0.41
1:C:50:HIS:CD2	7:C:369:HOH:O	2.61	0.41
2:D:32:LEU:HD22	2:D:39:GLN:HA	2.03	0.41
7:G:154:HOH:O	2:H:120:LYS:HE3	2.21	0.41
2:D:3:LEU:HD12	2:D:7:GLU:HB3	2.01	0.40

There are no symmetry-related clashes.

5.3 Torsion angles

5.3.1 Protein backbone

In the following table, the Percentiles column shows the percent Ramachandran outliers of the chain as a percentile score with respect to all X-ray entries followed by that with respect to entries of similar resolution.

The Analysed column shows the number of residues for which the backbone conformation was analysed, and the total number of residues.

Mol	Chain	Analysed	Favoured	Allowed	Outliers	Percentiles	
1	A	139/141 (99%)	137 (99%)	2 (1%)	0	100	100
1	C	139/141 (99%)	136 (98%)	3 (2%)	0	100	100
1	E	139/141 (99%)	137 (99%)	2 (1%)	0	100	100
1	G	139/141 (99%)	135 (97%)	4 (3%)	0	100	100
2	B	144/146 (99%)	142 (99%)	2 (1%)	0	100	100
2	D	144/146 (99%)	140 (97%)	4 (3%)	0	100	100
2	F	144/146 (99%)	140 (97%)	4 (3%)	0	100	100
2	H	144/146 (99%)	141 (98%)	3 (2%)	0	100	100
All	All	1132/1148 (99%)	1108 (98%)	24 (2%)	0	100	100

There are no Ramachandran outliers to report.

5.3.2 Protein sidechains

In the following table, the Percentiles column shows the percent sidechain outliers of the chain as a percentile score with respect to all X-ray entries followed by that with respect to entries of similar resolution.

The Analysed column shows the number of residues for which the sidechain conformation was analysed, and the total number of residues.

Mol	Chain	Analysed	Rotameric	Outliers	Percentiles	
1	A	113/113 (100%)	111 (98%)	2 (2%)	64	27
1	C	113/113 (100%)	112 (99%)	1 (1%)	82	56
1	E	113/113 (100%)	111 (98%)	2 (2%)	64	27
1	G	113/113 (100%)	113 (100%)	0	100	100
2	B	118/118 (100%)	113 (96%)	5 (4%)	34	5
2	D	118/118 (100%)	114 (97%)	4 (3%)	42	8

Continued on next page...

Continued from previous page...

Mol	Chain	Analysed	Rotameric	Outliers	Percentiles
2	F	118/118 (100%)	112 (95%)	6 (5%)	28 3
2	H	118/118 (100%)	112 (95%)	6 (5%)	28 3
All	All	924/924 (100%)	898 (97%)	26 (3%)	49 13

All (26) residues with a non-rotameric sidechain are listed below:

Mol	Chain	Res	Type
1	A	16	LYS
1	A	116	GLU
2	B	22	GLU
2	B	43	GLU
2	B	68	LEU
2	B	78	LEU
2	B	120	LYS
1	C	105	LEU
2	D	1	VAL
2	D	14	LEU
2	D	78	LEU
2	D	104	ARG
1	E	47	ASP
1	E	52	SER
2	F	2	HIS
2	F	3	LEU
2	F	4	THR
2	F	58	PRO
2	F	68	LEU
2	F	78	LEU
2	H	1	VAL
2	H	14	LEU
2	H	43	GLU
2	H	78	LEU
2	H	120	LYS
2	H	144	LYS

Some sidechains can be flipped to improve hydrogen bonding and reduce clashes. All (20) such sidechains are listed below:

Mol	Chain	Res	Type
1	A	9	ASN
1	A	89	HIS
1	A	97	ASN

Continued on next page...

Continued from previous page...

Mol	Chain	Res	Type
2	B	77	HIS
2	B	102	ASN
2	B	117	HIS
1	C	58	HIS
1	C	97	ASN
2	D	102	ASN
2	D	116	HIS
1	E	9	ASN
1	E	58	HIS
1	E	72	HIS
1	E	97	ASN
2	F	102	ASN
2	F	139	ASN
2	F	143	HIS
1	G	58	HIS
1	G	97	ASN
2	H	116	HIS

5.3.3 RNA [i](#)

There are no RNA molecules in this entry.

5.4 Non-standard residues in protein, DNA, RNA chains [i](#)

There are no non-standard protein/DNA/RNA residues in this entry.

5.5 Carbohydrates [i](#)

There are no carbohydrates in this entry.

5.6 Ligand geometry [i](#)

14 ligands are modelled in this entry.

In the following table, the Counts columns list the number of bonds (or angles) for which Mogul statistics could be retrieved, the number of bonds (or angles) that are observed in the model and the number of bonds (or angles) that are defined in the chemical component dictionary. The Link column lists molecule types, if any, to which the group is linked. The Z score for a bond length (or angle) is the number of standard deviations the observed value is removed from the expected value. A bond length (or angle) with $|Z| > 2$ is considered an outlier worth inspection. RMSZ is the root-mean-square of all Z scores of the bond lengths (or angles).

Mol	Type	Chain	Res	Link	Bond lengths			Bond angles		
					Counts	RMSZ	# Z > 2	Counts	RMSZ	# Z > 2
3	HNI	A	142	-	28,50,50	3.79	14 (50%)	20,82,82	5.79	10 (50%)
4	HEM	B	147	2,5	28,50,50	2.16	8 (28%)	17,82,82	1.92	4 (23%)
5	CMO	B	148	4	0,1,1	0.00	-	0,0,0	0.00	-
3	HNI	C	142	-	28,50,50	3.90	15 (53%)	20,82,82	5.77	11 (55%)
4	HEM	D	147	2,5	28,50,50	2.21	5 (17%)	17,82,82	1.80	5 (29%)
5	CMO	D	148	4	0,1,1	0.00	-	0,0,0	0.00	-
6	2FU	D	3001	2	5,5,5	0.59	0	4,4,4	2.24	3 (75%)
3	HNI	E	142	-	28,50,50	3.90	15 (53%)	20,82,82	5.66	10 (50%)
4	HEM	F	147	2,5	28,50,50	2.11	6 (21%)	17,82,82	1.66	4 (23%)
5	CMO	F	148	4	0,1,1	0.00	-	0,0,0	0.00	-
6	2FU	F	3002	2	5,5,5	0.78	0	4,4,4	5.78	3 (75%)
3	HNI	G	142	-	28,50,50	3.92	15 (53%)	20,82,82	5.95	8 (40%)
4	HEM	H	147	2,5	28,50,50	2.03	6 (21%)	17,82,82	1.89	3 (17%)
5	CMO	H	148	4	0,1,1	0.00	-	0,0,0	0.00	-

In the following table, the Chirals column lists the number of chiral outliers, the number of chiral centers analysed, the number of these observed in the model and the number defined in the chemical component dictionary. Similar counts are reported in the Torsion and Rings columns. '-' means no outliers of that kind were identified.

Mol	Type	Chain	Res	Link	Chirals	Torsions	Rings
3	HNI	A	142	-	-	0/8/94/94	0/0/8/8
4	HEM	B	147	2,5	-	0/6/54/54	0/0/8/8
5	CMO	B	148	4	-	0/0/0/0	0/0/0/0
3	HNI	C	142	-	-	0/8/94/94	0/0/8/8
4	HEM	D	147	2,5	-	0/6/54/54	0/0/8/8
5	CMO	D	148	4	-	0/0/0/0	0/0/0/0
6	2FU	D	3001	2	-	2/3/3/3	0/0/0/0
3	HNI	E	142	-	-	0/8/94/94	0/0/8/8
4	HEM	F	147	2,5	-	0/6/54/54	0/0/8/8
5	CMO	F	148	4	-	0/0/0/0	0/0/0/0
6	2FU	F	3002	2	-	2/3/3/3	0/0/0/0
3	HNI	G	142	-	-	0/8/94/94	0/0/8/8
4	HEM	H	147	2,5	-	0/6/54/54	0/0/8/8
5	CMO	H	148	4	-	0/0/0/0	0/0/0/0

All (84) bond length outliers are listed below:

Mol	Chain	Res	Type	Atoms	Z	Observed(Å)	Ideal(Å)
3	C	142	HNI	CHD-C4C	-8.19	1.37	1.53

Continued on next page...

Continued from previous page...

Mol	Chain	Res	Type	Atoms	Z	Observed(Å)	Ideal(Å)
3	E	142	HNI	CHD-C4C	-8.04	1.38	1.53
3	A	142	HNI	CHC-C1C	-7.93	1.38	1.53
3	G	142	HNI	CHD-C4C	-7.85	1.38	1.53
3	E	142	HNI	CHC-C1C	-7.77	1.38	1.53
3	G	142	HNI	CHA-C1A	-7.72	1.38	1.53
3	E	142	HNI	CHB-C4A	-7.65	1.38	1.53
3	G	142	HNI	CHC-C1C	-7.61	1.38	1.53
3	A	142	HNI	CHD-C4C	-7.59	1.38	1.53
3	C	142	HNI	CHB-C4A	-7.59	1.38	1.53
3	C	142	HNI	CHC-C1C	-7.50	1.39	1.53
3	G	142	HNI	CHB-C4A	-7.23	1.39	1.53
3	E	142	HNI	CHA-C1A	-7.13	1.39	1.53
3	C	142	HNI	CHA-C1A	-6.97	1.40	1.53
3	A	142	HNI	CHA-C1A	-6.66	1.40	1.53
3	A	142	HNI	CHB-C4A	-6.64	1.40	1.53
3	A	142	HNI	CHD-C1D	-5.44	1.38	1.51
4	B	147	HEM	C3B-C2B	-5.24	1.33	1.40
4	F	147	HEM	C3B-C2B	-5.24	1.33	1.40
3	C	142	HNI	CHB-C1B	-5.22	1.38	1.51
3	G	142	HNI	CHB-C1B	-5.22	1.38	1.51
3	G	142	HNI	CHD-C1D	-5.11	1.39	1.51
3	E	142	HNI	CHC-C4B	-5.11	1.39	1.51
3	E	142	HNI	CHB-C1B	-5.06	1.39	1.51
3	A	142	HNI	CHB-C1B	-5.04	1.39	1.51
3	E	142	HNI	CHD-C1D	-4.90	1.39	1.51
3	A	142	HNI	CHC-C4B	-4.89	1.39	1.51
3	G	142	HNI	CHC-C4B	-4.80	1.39	1.51
3	C	142	HNI	CHD-C1D	-4.80	1.39	1.51
3	G	142	HNI	CHA-C4D	-4.71	1.40	1.51
4	D	147	HEM	C3C-C2C	-4.67	1.34	1.40
4	H	147	HEM	C3B-C2B	-4.66	1.34	1.40
4	D	147	HEM	C3B-C2B	-4.44	1.34	1.40
3	E	142	HNI	CHA-C4D	-4.41	1.40	1.51
3	C	142	HNI	CHC-C4B	-4.34	1.41	1.51
3	A	142	HNI	CHA-C4D	-4.22	1.41	1.51
4	F	147	HEM	C3C-C2C	-4.20	1.34	1.40
4	B	147	HEM	C3C-C2C	-4.08	1.35	1.40
3	C	142	HNI	CHA-C4D	-4.08	1.41	1.51
4	H	147	HEM	C3C-C2C	-3.56	1.35	1.40
3	A	142	HNI	C3B-CAB	-3.32	1.41	1.47
3	C	142	HNI	C3B-CAB	-3.10	1.41	1.47
3	A	142	HNI	C4C-C3C	-3.01	1.46	1.51

Continued on next page...

Continued from previous page...

Mol	Chain	Res	Type	Atoms	Z	Observed(Å)	Ideal(Å)
3	G	142	HNI	C3B-CAB	-2.94	1.42	1.47
3	C	142	HNI	C4C-C3C	-2.79	1.46	1.51
3	E	142	HNI	C3B-CAB	-2.75	1.42	1.47
3	E	142	HNI	C4C-C3C	-2.15	1.47	1.51
3	G	142	HNI	C3B-C2B	-2.11	1.37	1.40
4	B	147	HEM	C4C-NC	2.01	1.39	1.36
4	B	147	HEM	C1D-ND	2.04	1.40	1.36
3	E	142	HNI	CMA-C3A	2.05	1.54	1.50
4	H	147	HEM	C1C-NC	2.08	1.39	1.36
3	A	142	HNI	CMA-C3A	2.09	1.54	1.50
3	E	142	HNI	CBC-CAC	2.10	1.40	1.30
3	C	142	HNI	CBC-CAC	2.13	1.41	1.30
3	G	142	HNI	CMA-C3A	2.22	1.54	1.50
3	G	142	HNI	CBC-CAC	2.22	1.41	1.30
3	C	142	HNI	CMA-C3A	2.26	1.54	1.50
4	F	147	HEM	C4D-ND	2.54	1.39	1.36
4	B	147	HEM	C4D-ND	2.93	1.40	1.36
4	B	147	HEM	C3C-CAC	3.07	1.53	1.47
4	F	147	HEM	C3C-CAC	3.19	1.54	1.47
4	B	147	HEM	C3B-CAB	3.26	1.54	1.47
4	H	147	HEM	C3C-CAC	3.40	1.54	1.47
4	H	147	HEM	C3B-CAB	3.42	1.54	1.47
4	F	147	HEM	C3B-CAB	3.71	1.55	1.47
4	D	147	HEM	C3C-CAC	3.89	1.55	1.47
4	D	147	HEM	C3B-CAB	4.11	1.56	1.47
3	A	142	HNI	C1B-C2B	4.14	1.43	1.38
3	A	142	HNI	C1D-C2D	4.22	1.44	1.38
4	F	147	HEM	C3D-C2D	4.23	1.50	1.37
3	E	142	HNI	C1D-C2D	4.47	1.44	1.38
3	A	142	HNI	C4D-C3D	4.50	1.44	1.38
3	C	142	HNI	C1D-C2D	4.50	1.44	1.38
3	G	142	HNI	C1B-C2B	4.55	1.44	1.38
3	G	142	HNI	C4D-C3D	4.57	1.44	1.38
4	H	147	HEM	C3D-C2D	4.59	1.51	1.37
4	B	147	HEM	C3D-C2D	4.61	1.51	1.37
3	E	142	HNI	C4D-C3D	4.64	1.44	1.38
4	D	147	HEM	C3D-C2D	4.75	1.51	1.37
3	E	142	HNI	C1B-C2B	4.76	1.44	1.38
3	C	142	HNI	C1B-C2B	4.78	1.44	1.38
3	G	142	HNI	C1D-C2D	4.80	1.44	1.38
3	C	142	HNI	C4D-C3D	5.21	1.45	1.38

All (61) bond angle outliers are listed below:

Mol	Chain	Res	Type	Atoms	Z	Observed(°)	Ideal(°)
3	G	142	HNI	CHC-C4B-C3B	-4.93	122.93	129.55
6	F	3002	2FU	C1-C5-C7	-4.59	117.08	121.58
4	F	147	HEM	CBD-CAD-C3D	-4.48	103.92	112.47
3	C	142	HNI	CHD-C1D-C2D	-4.38	121.87	129.45
3	E	142	HNI	CAA-CBA-CGA	-4.24	105.41	112.66
3	G	142	HNI	CHD-C1D-C2D	-4.14	122.28	129.45
3	E	142	HNI	CHB-C1B-C2B	-4.14	122.29	129.45
3	E	142	HNI	CHD-C1D-C2D	-4.14	122.29	129.45
4	B	147	HEM	CBD-CAD-C3D	-3.97	104.89	112.47
3	A	142	HNI	CHD-C1D-C2D	-3.96	122.59	129.45
4	B	147	HEM	CBA-CAA-C2A	-3.89	105.05	112.48
4	H	147	HEM	CBA-CAA-C2A	-3.88	105.06	112.48
3	C	142	HNI	CHC-C4B-C3B	-3.88	124.33	129.55
3	A	142	HNI	CHB-C1B-C2B	-3.78	122.90	129.45
4	H	147	HEM	CBD-CAD-C3D	-3.69	105.42	112.47
3	A	142	HNI	CHC-C4B-C3B	-3.67	124.61	129.55
3	A	142	HNI	CBA-CAA-C2A	-3.65	107.61	114.28
3	G	142	HNI	CHB-C1B-C2B	-3.38	123.61	129.45
4	D	147	HEM	CMA-C3A-C4A	-3.22	123.51	128.46
4	D	147	HEM	CBD-CAD-C3D	-3.17	106.42	112.47
3	C	142	HNI	CHB-C1B-C2B	-3.07	124.14	129.45
3	C	142	HNI	CBA-CAA-C2A	-3.04	108.73	114.28
3	E	142	HNI	CHC-C4B-C3B	-3.03	125.48	129.55
4	H	147	HEM	CMA-C3A-C4A	-2.92	123.98	128.46
4	D	147	HEM	CBA-CAA-C2A	-2.82	107.09	112.48
6	D	3001	2FU	O8-C7-C5	-2.65	119.16	125.39
4	D	147	HEM	C1D-C2D-C3D	-2.64	105.16	107.00
6	D	3001	2FU	C1-C5-C7	-2.58	119.06	121.58
6	D	3001	2FU	O3-C2-C1	-2.51	119.49	125.39
4	F	147	HEM	CBA-CAA-C2A	-2.27	108.14	112.48
4	F	147	HEM	CMA-C3A-C4A	-2.10	125.24	128.46
6	F	3002	2FU	O8-C7-C5	-2.08	120.49	125.39
4	B	147	HEM	CMA-C3A-C4A	-2.05	125.32	128.46
3	C	142	HNI	CMB-C2B-C3B	2.11	128.80	124.89
4	D	147	HEM	C4A-C3A-C2A	2.16	108.50	107.00
4	F	147	HEM	CMC-C2C-C3C	2.28	129.12	124.89
4	B	147	HEM	CMC-C2C-C3C	2.51	129.54	124.89
3	C	142	HNI	CAD-CBD-CGD	2.72	117.31	112.66
3	E	142	HNI	CMB-C2B-C3B	2.98	130.42	124.89
3	A	142	HNI	C3B-C4B-NB	3.19	111.57	107.17
3	A	142	HNI	CMB-C2B-C3B	3.37	131.15	124.89
3	E	142	HNI	C3B-C4B-NB	3.68	112.24	107.17
3	C	142	HNI	C3B-C4B-NB	3.99	112.67	107.17

Continued on next page...

Continued from previous page...

Mol	Chain	Res	Type	Atoms	Z	Observed(°)	Ideal(°)
3	G	142	HNI	C3B-C4B-NB	4.23	113.01	107.17
6	F	3002	2FU	C5-C1-C2	10.31	131.68	121.58
3	E	142	HNI	CHD-C4C-NC	10.89	123.81	110.03
3	C	142	HNI	CHD-C4C-NC	10.99	123.93	110.03
3	E	142	HNI	CHC-C1C-NC	11.30	124.33	110.03
3	E	142	HNI	CHA-C1A-NA	11.40	124.45	110.03
3	C	142	HNI	CHA-C1A-NA	11.63	124.75	110.03
3	A	142	HNI	CHD-C4C-NC	11.64	124.76	110.03
3	C	142	HNI	CHC-C1C-NC	11.84	125.02	110.03
3	A	142	HNI	CHC-C1C-NC	11.88	125.07	110.03
3	G	142	HNI	CHC-C1C-NC	11.93	125.12	110.03
3	A	142	HNI	CHA-C1A-NA	12.02	125.24	110.03
3	G	142	HNI	CHD-C4C-NC	12.12	125.37	110.03
3	A	142	HNI	CHB-C4A-NA	12.54	125.90	110.03
3	G	142	HNI	CHA-C1A-NA	12.61	125.99	110.03
3	E	142	HNI	CHB-C4A-NA	12.91	126.36	110.03
3	G	142	HNI	CHB-C4A-NA	13.08	126.58	110.03
3	C	142	HNI	CHB-C4A-NA	13.32	126.88	110.03

There are no chirality outliers.

All (4) torsion outliers are listed below:

Mol	Chain	Res	Type	Atoms
6	D	3001	2FU	O8-C7-C5-C1
6	F	3002	2FU	O8-C7-C5-C1
6	F	3002	2FU	O3-C2-C1-C5
6	D	3001	2FU	O3-C2-C1-C5

There are no ring outliers.

7 monomers are involved in 12 short contacts:

Mol	Chain	Res	Type	Clashes	Symm-Clashes
4	B	147	HEM	2	0
3	C	142	HNI	1	0
4	D	147	HEM	5	0
5	D	148	CMO	4	0
3	E	142	HNI	1	0
4	F	147	HEM	2	0
4	H	147	HEM	1	0

5.7 Other polymers

There are no such residues in this entry.

5.8 Polymer linkage issues

There are no chain breaks in this entry.

6 Fit of model and data

6.1 Protein, DNA and RNA chains

EDS was not executed - this section is therefore empty.

6.2 Non-standard residues in protein, DNA, RNA chains

EDS was not executed - this section is therefore empty.

6.3 Carbohydrates

EDS was not executed - this section is therefore empty.

6.4 Ligands

EDS was not executed - this section is therefore empty.

6.5 Other polymers

EDS was not executed - this section is therefore empty.