



Full wwPDB X-ray Structure Validation Report ⓘ

Feb 13, 2017 – 06:05 pm GMT

PDB ID : 2J4Z
Title : STRUCTURE OF AURORA-2 IN COMPLEX WITH PHA-680626
Authors : Cameron, A.D.; Izzo, G.; Storici, P.; Rusconi, L.; Fancelli, D.; Varasi, M.; Berta, D.; Bindi, S.; Forte, B.; Severino, D.; Tonani, R.; Vianello, P.
Deposited on : 2006-09-08
Resolution : 2.00 Å(reported)

This is a Full wwPDB X-ray Structure Validation Report for a publicly released PDB entry.

We welcome your comments at validation@mail.wwpdb.org

A user guide is available at

<http://wwpdb.org/validation/2016/XrayValidationReportHelp>

with specific help available everywhere you see the ⓘ symbol.

The following versions of software and data (see [references ⓘ](#)) were used in the production of this report:

MolProbity	:	4.02b-467
Mogul	:	1.7.2 (RC1), CSD as538be (2017)
Xtriage (Phenix)	:	1.9-1692
EDS	:	trunk28620
Percentile statistics	:	20161228.v01 (using entries in the PDB archive December 28th 2016)
Refmac	:	5.8.0135
CCP4	:	6.5.0
Ideal geometry (proteins)	:	Engh & Huber (2001)
Ideal geometry (DNA, RNA)	:	Parkinson et al. (1996)
Validation Pipeline (wwPDB-VP)	:	recalc28949

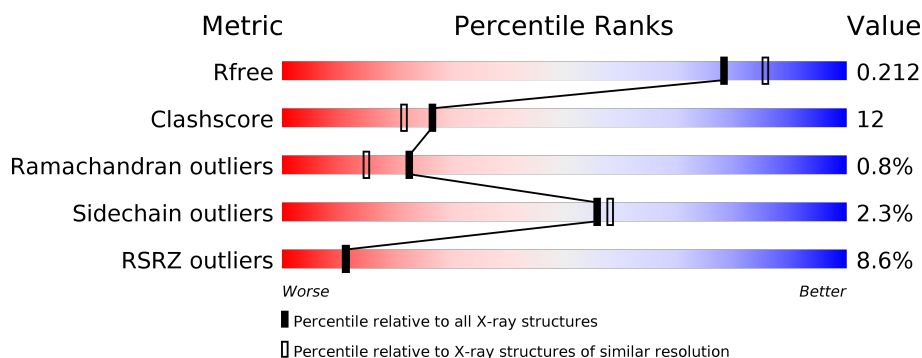
1 Overall quality at a glance

The following experimental techniques were used to determine the structure:

X-RAY DIFFRACTION

The reported resolution of this entry is 2.00 Å.

Percentile scores (ranging between 0-100) for global validation metrics of the entry are shown in the following graphic. The table shows the number of entries on which the scores are based.



Metric	Whole archive (#Entries)	Similar resolution (#Entries, resolution range(Å))
R_{free}	100719	6609 (2.00-2.00)
Clashscore	112137	7775 (2.00-2.00)
Ramachandran outliers	110173	7679 (2.00-2.00)
Sidechain outliers	110143	7678 (2.00-2.00)
RSRZ outliers	101464	6696 (2.00-2.00)

The table below summarises the geometric issues observed across the polymeric chains and their fit to the electron density. The red, orange, yellow and green segments on the lower bar indicate the fraction of residues that contain outliers for ≥ 3 , 2, 1 and 0 types of geometric quality criteria. A grey segment represents the fraction of residues that are not modelled. The numeric value for each fraction is indicated below the corresponding segment, with a dot representing fractions $\leq 5\%$. The upper red bar (where present) indicates the fraction of residues that have poor fit to the electron density. The numeric value is given above the bar.

Mol	Chain	Length	Quality of chain
1	A	306	<div> <div>6%</div> <div> <div></div> <div>71%</div> <div>13%</div> <div>•</div> <div>14%</div> </div> </div>
1	B	306	<div> <div>9%</div> <div> <div></div> <div>67%</div> <div>20%</div> <div>•</div> <div>12%</div> </div> </div>

2 Entry composition [i](#)

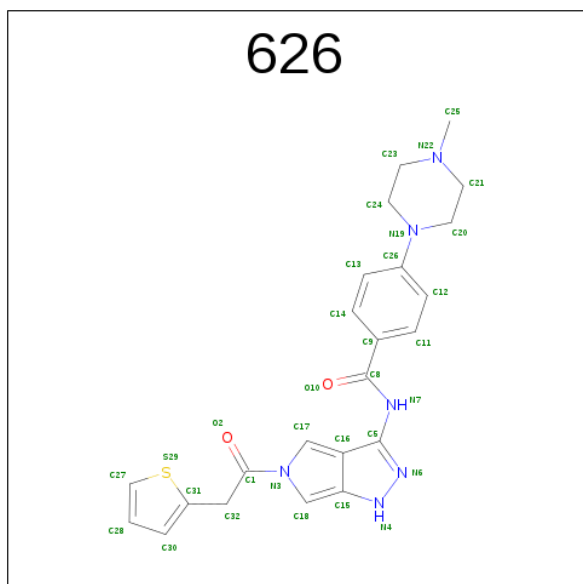
There are 4 unique types of molecules in this entry. The entry contains 4626 atoms, of which 0 are hydrogens and 0 are deuteriums.

In the tables below, the ZeroOcc column contains the number of atoms modelled with zero occupancy, the AltConf column contains the number of residues with at least one atom in alternate conformation and the Trace column contains the number of residues modelled with at most 2 atoms.

- Molecule 1 is a protein called SERINE THREONINE-PROTEIN KINASE 6.

Mol	Chain	Residues	Atoms					ZeroOcc	AltConf	Trace
1	A	264	Total	C	N	O	S	0	0	1
			2160	1386	383	385	6			
1	B	270	Total	C	N	O	S	0	0	1
			2205	1412	392	394	7			

- Molecule 2 is 4-(4-METHYLPIPERAZIN-1-YL)-N-[5-(2-THIENYLACETYL)-1,5-DIHYDROPYRROLO[3,4-C]PYRAZOL-3-YL]BENZAMIDE (three-letter code: 626) (formula: C₂₃H₂₄N₆O₂S).



Mol	Chain	Residues	Atoms					ZeroOcc	AltConf
2	A	1	Total	C	N	O	S	0	0
			32	23	6	2	1		
2	B	1	Total	C	N	O	S	0	0
			32	23	6	2	1		

- Molecule 3 is ARSENIC (three-letter code: ARS) (formula: As).

Mol	Chain	Residues	Atoms		ZeroOcc	AltConf
3	B	1	Total 1	As 1	0	0
3	A	2	Total 2	As 2	0	0

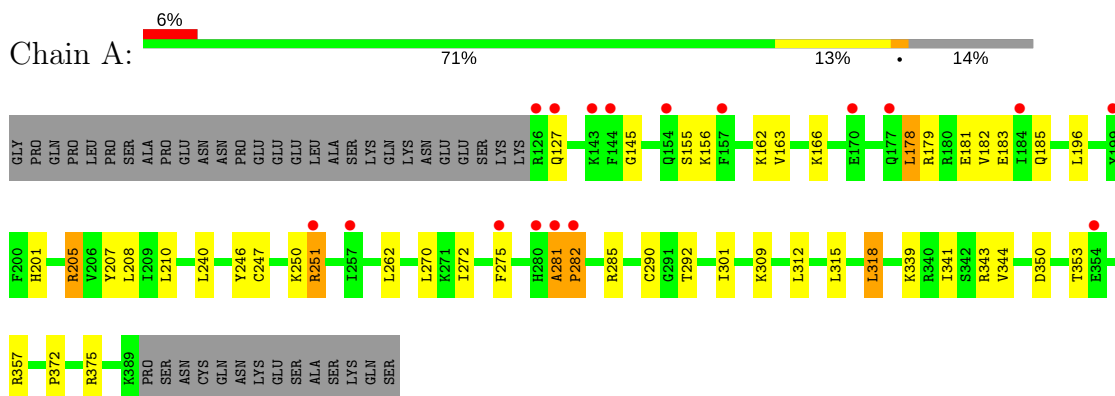
- Molecule 4 is water.

Mol	Chain	Residues	Atoms		ZeroOcc	AltConf
4	A	110	Total 110	O 110	0	0
4	B	84	Total 84	O 84	0	0

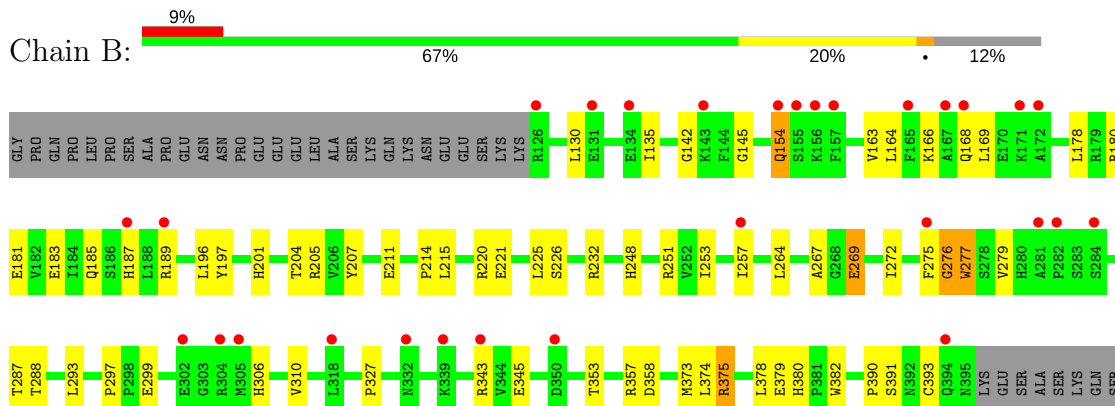
3 Residue-property plots [i](#)

These plots are drawn for all protein, RNA and DNA chains in the entry. The first graphic for a chain summarises the proportions of the various outlier classes displayed in the second graphic. The second graphic shows the sequence view annotated by issues in geometry and electron density. Residues are color-coded according to the number of geometric quality criteria for which they contain at least one outlier: green = 0, yellow = 1, orange = 2 and red = 3 or more. A red dot above a residue indicates a poor fit to the electron density ($RSRZ > 2$). Stretches of 2 or more consecutive residues without any outlier are shown as a green connector. Residues present in the sample, but not in the model, are shown in grey.

• Molecule 1: SERINE THREONINE-PROTEIN KINASE 6



• Molecule 1: SERINE THREONINE-PROTEIN KINASE 6



4 Data and refinement statistics

Property	Value	Source
Space group	P 21 21 21	Depositor
Cell constants a, b, c, α , β , γ	71.13Å 89.44Å 94.04Å 90.00° 90.00° 90.00°	Depositor
Resolution (Å)	29.58 – 2.00 29.58 – 1.99	Depositor EDS
% Data completeness (in resolution range)	(Not available) (29.58-2.00) 99.3 (29.58-1.99)	Depositor EDS
R_{merge}	0.05	Depositor
R_{sym}	(Not available)	Depositor
$\langle I/\sigma(I) \rangle$ ¹	3.00 (at 2.00Å)	Xtriage
Refinement program	CNX 2002	Depositor
R, R_{free}	0.214 , 0.249 0.213 , 0.212	Depositor DCC
R_{free} test set	2070 reflections (5.30%)	DCC
Wilson B-factor (Å ²)	31.4	Xtriage
Anisotropy	0.322	Xtriage
Bulk solvent k_{sol} (e/Å ³), B_{sol} (Å ²)	0.37 , 49.0	EDS
L-test for twinning ²	$\langle L \rangle = 0.49$, $\langle L^2 \rangle = 0.33$	Xtriage
Estimated twinning fraction	0.014 for -h,l,k	Xtriage
F_o, F_c correlation	0.95	EDS
Total number of atoms	4626	wwPDB-VP
Average B, all atoms (Å ²)	39.0	wwPDB-VP

Xtriage's analysis on translational NCS is as follows: *The largest off-origin peak in the Patterson function is 4.61% of the height of the origin peak. No significant pseudotranslation is detected.*

¹Intensities estimated from amplitudes.

²Theoretical values of $\langle |L| \rangle$, $\langle L^2 \rangle$ for acentric reflections are 0.5, 0.333 respectively for untwinned datasets, and 0.375, 0.2 for perfectly twinned datasets.

5 Model quality [i](#)

5.1 Standard geometry [i](#)

Bond lengths and bond angles in the following residue types are not validated in this section: ARS, 626

The Z score for a bond length (or angle) is the number of standard deviations the observed value is removed from the expected value. A bond length (or angle) with $|Z| > 5$ is considered an outlier worth inspection. RMSZ is the root-mean-square of all Z scores of the bond lengths (or angles).

Mol	Chain	Bond lengths		Bond angles	
		RMSZ	$\# Z > 5$	RMSZ	$\# Z > 5$
1	A	0.33	0/2214	0.59	0/2994
1	B	0.33	0/2260	0.57	1/3056 (0.0%)
All	All	0.33	0/4474	0.58	1/6050 (0.0%)

There are no bond length outliers.

All (1) bond angle outliers are listed below:

Mol	Chain	Res	Type	Atoms	Z	Observed(°)	Ideal(°)
1	B	276	GLY	N-CA-C	5.56	127.00	113.10

There are no chirality outliers.

There are no planarity outliers.

5.2 Too-close contacts [i](#)

In the following table, the Non-H and H(model) columns list the number of non-hydrogen atoms and hydrogen atoms in the chain respectively. The H(added) column lists the number of hydrogen atoms added and optimized by MolProbity. The Clashes column lists the number of clashes within the asymmetric unit, whereas Symm-Clashes lists symmetry related clashes.

Mol	Chain	Non-H	H(model)	H(added)	Clashes	Symm-Clashes
1	A	2160	0	2165	42	0
1	B	2205	0	2208	59	0
2	A	32	0	24	0	0
2	B	32	0	24	1	0
3	A	2	0	0	2	0
3	B	1	0	0	0	0
4	A	110	0	0	1	0
4	B	84	0	0	3	0

Continued on next page...

Continued from previous page...

Mol	Chain	Non-H	H(model)	H(added)	Clashes	Symm-Clashes
All	All	4626	0	4421	101	0

The all-atom clashscore is defined as the number of clashes found per 1000 atoms (including hydrogen atoms). The all-atom clashscore for this structure is 12.

All (101) close contacts within the same asymmetric unit are listed below, sorted by their clash magnitude.

Atom-1	Atom-2	Interatomic distance (Å)	Clash overlap (Å)
1:B:375:ARG:H	1:B:375:ARG:HD2	0.90	1.03
1:B:375:ARG:N	1:B:375:ARG:HD2	1.75	1.00
1:A:281:ALA:HB3	1:A:282:PRO:HA	1.45	0.97
1:B:375:ARG:CD	1:B:375:ARG:H	1.75	0.96
1:A:162:LYS:HD3	1:A:208:LEU:HD12	1.54	0.89
1:A:281:ALA:CB	1:A:282:PRO:HA	2.11	0.80
1:A:205:ARG:HH11	1:A:205:ARG:HB2	1.46	0.80
1:B:373:MET:HB3	1:B:375:ARG:HH11	1.53	0.71
1:B:299:GLU:HG3	1:B:306:HIS:HB3	1.71	0.71
1:B:380:HIS:HD2	1:B:382:TRP:H	1.37	0.70
1:A:185:GLN:HG3	1:A:275:PHE:CD1	2.27	0.70
1:A:166:LYS:HZ1	1:A:201:HIS:HB2	1.56	0.69
1:B:297:PRO:HG3	1:B:310:VAL:HG13	1.77	0.67
1:B:375:ARG:O	1:B:379:GLU:HG3	1.96	0.66
1:B:204:THR:HB	1:B:205:ARG:NH1	2.10	0.66
1:B:374:LEU:H	1:B:375:ARG:NH1	1.93	0.65
1:B:380:HIS:CD2	1:B:382:TRP:H	2.15	0.64
1:B:204:THR:HB	1:B:205:ARG:HH11	1.63	0.63
1:A:281:ALA:HB3	1:A:282:PRO:CA	2.26	0.63
1:B:375:ARG:HG3	1:B:393:CYS:SG	2.39	0.63
1:A:281:ALA:CB	1:A:282:PRO:CA	2.76	0.63
1:B:358:ASP:OD1	1:B:380:HIS:HE1	1.85	0.60
1:A:166:LYS:NZ	1:A:201:HIS:HB2	2.17	0.60
1:A:353:THR:O	1:A:357:ARG:HG3	2.04	0.58
1:B:373:MET:HB3	1:B:375:ARG:HD3	1.85	0.57
1:A:262:LEU:HB3	1:A:270:LEU:HD11	1.86	0.57
1:B:166:LYS:HG3	1:B:205:ARG:HA	1.87	0.56
1:B:180:ARG:O	1:B:183:GLU:HG2	2.06	0.56
1:A:181:GLU:HG2	1:A:275:PHE:CE1	2.41	0.55
1:B:225:LEU:O	1:B:226:SER:HB3	2.06	0.55
1:A:240:LEU:HD12	1:A:272:ILE:HD11	1.88	0.55
1:A:344:VAL:O	1:A:344:VAL:HG12	2.06	0.54
1:A:162:LYS:HB3	1:A:208:LEU:HB2	1.89	0.54

Continued on next page...

Continued from previous page...

Atom-1	Atom-2	Interatomic distance (Å)	Clash overlap (Å)
1:B:164:LEU:O	1:B:205:ARG:HB2	2.08	0.54
1:B:220:ARG:HG2	1:B:220:ARG:HH11	1.73	0.53
1:B:327:PRO:HB2	4:B:2039:HOH:O	2.09	0.52
1:B:187:HIS:HA	1:B:189:ARG:NH1	2.25	0.52
1:B:135:ILE:HD12	1:B:135:ILE:N	2.23	0.52
1:B:205:ARG:HG2	1:B:205:ARG:HH11	1.74	0.51
1:B:185:GLN:HB2	1:B:275:PHE:CD2	2.46	0.51
1:B:248:HIS:CD2	1:B:253:ILE:HG22	2.47	0.50
1:B:306:HIS:HB2	1:B:310:VAL:CG2	2.41	0.50
1:A:185:GLN:HG3	1:A:275:PHE:HD1	1.77	0.50
1:A:375:ARG:HB3	1:A:375:ARG:NH1	2.27	0.49
1:B:306:HIS:HB2	1:B:310:VAL:HG21	1.94	0.49
1:A:339:LYS:HB3	1:A:343:ARG:NH1	2.27	0.49
1:A:339:LYS:HB3	1:A:343:ARG:HH12	1.78	0.49
1:A:309:LYS:CD	1:A:312:LEU:HD12	2.43	0.49
1:A:145:GLY:HA3	1:A:163:VAL:O	2.13	0.49
1:A:178:LEU:O	1:A:182:VAL:HG23	2.13	0.48
1:A:155:SER:O	1:A:156:LYS:HB2	2.14	0.48
1:B:390:PRO:HD3	4:B:2078:HOH:O	2.12	0.48
1:B:374:LEU:H	1:B:375:ARG:HH11	1.59	0.48
1:B:178:LEU:HD23	1:B:178:LEU:C	2.34	0.48
1:B:142:GLY:HA3	1:B:279:VAL:HA	1.95	0.48
1:A:240:LEU:HD23	1:A:315:LEU:CD1	2.43	0.47
1:A:309:LYS:HD2	1:A:312:LEU:HD12	1.96	0.47
1:B:288:THR:HB	4:B:2036:HOH:O	2.14	0.46
1:B:353:THR:O	1:B:357:ARG:HG3	2.15	0.46
1:A:179:ARG:NH1	1:A:183:GLU:HB2	2.29	0.46
1:A:350:ASP:HB2	4:A:2092:HOH:O	2.14	0.46
1:B:197:TYR:HE1	1:B:211:GLU:HA	1.80	0.46
1:B:343:ARG:HH22	1:B:345:GLU:CD	2.18	0.46
1:B:185:GLN:OE1	1:B:196:LEU:HD12	2.16	0.45
1:B:373:MET:HB3	1:B:375:ARG:NH1	2.26	0.45
1:B:185:GLN:HB2	1:B:275:PHE:CE2	2.52	0.45
1:A:375:ARG:CZ	1:A:375:ARG:HB3	2.46	0.45
1:A:205:ARG:HH11	1:A:205:ARG:CB	2.25	0.45
1:B:251:ARG:HG2	1:B:251:ARG:HH11	1.82	0.44
1:A:205:ARG:NH1	1:A:207:TYR:OH	2.51	0.44
1:A:181:GLU:HG2	1:A:275:PHE:HE1	1.81	0.44
1:A:247:CYS:CB	3:A:1390:ARS:AS	3.26	0.44
1:B:130:LEU:HD13	1:B:207:TYR:CE2	2.52	0.44
1:B:373:MET:CB	1:B:375:ARG:HH11	2.28	0.44

Continued on next page...

Continued from previous page...

Atom-1	Atom-2	Interatomic distance (Å)	Clash overlap (Å)
1:B:205:ARG:HG2	1:B:205:ARG:NH1	2.32	0.43
1:B:378:LEU:HB3	1:B:391:SER:HB3	1.99	0.43
1:A:179:ARG:HH12	1:A:183:GLU:HB2	1.84	0.43
1:A:196:LEU:HA	1:A:210:LEU:HD23	1.99	0.43
1:B:214:PRO:O	2:B:1395:626:H12	2.18	0.43
1:A:301:ILE:HD12	1:A:341:ILE:HB	2.01	0.42
1:A:285:ARG:HD2	1:A:292:THR:HG21	2.01	0.42
1:B:178:LEU:HA	1:B:277:TRP:CZ3	2.54	0.42
1:A:312:LEU:HD13	1:A:372:PRO:O	2.20	0.42
1:B:375:ARG:N	1:B:375:ARG:CD	2.54	0.42
1:A:301:ILE:HD12	1:A:341:ILE:CG2	2.49	0.42
1:B:267:ALA:N	1:B:269:GLU:OE2	2.50	0.42
1:A:250:LYS:O	1:A:251:ARG:HB2	2.20	0.42
1:B:169:LEU:HD13	1:B:178:LEU:HD12	2.01	0.42
1:B:287:THR:CG2	1:B:288:THR:N	2.83	0.42
1:B:221:GLU:HG2	1:B:232:ARG:NH2	2.35	0.41
1:B:257:ILE:HG22	1:B:272:ILE:HD12	2.03	0.41
1:A:240:LEU:HD22	1:A:318:LEU:HD12	2.01	0.41
1:B:154:GLN:HA	1:B:154:GLN:OE1	2.21	0.41
1:B:166:LYS:NZ	1:B:201:HIS:HD2	2.19	0.41
1:B:374:LEU:N	1:B:375:ARG:HH11	2.18	0.41
1:B:145:GLY:HA3	1:B:163:VAL:O	2.21	0.41
1:B:373:MET:HB3	1:B:375:ARG:CD	2.48	0.41
1:A:290:CYS:SG	3:A:1391:ARS:AS	3.39	0.41
1:A:246:TYR:O	1:A:250:LYS:HG2	2.21	0.41
1:B:163:VAL:CG1	1:B:205:ARG:HD2	2.51	0.40
1:B:215:LEU:HB2	1:B:264:LEU:HB2	2.04	0.40

There are no symmetry-related clashes.

5.3 Torsion angles ⓘ

5.3.1 Protein backbone ⓘ

In the following table, the Percentiles column shows the percent Ramachandran outliers of the chain as a percentile score with respect to all X-ray entries followed by that with respect to entries of similar resolution.

The Analysed column shows the number of residues for which the backbone conformation was analysed, and the total number of residues.

Mol	Chain	Analysed	Favoured	Allowed	Outliers	Percentiles	
1	A	262/306 (86%)	249 (95%)	12 (5%)	1 (0%)	38	33
1	B	268/306 (88%)	255 (95%)	10 (4%)	3 (1%)	17	9
All	All	530/612 (87%)	504 (95%)	22 (4%)	4 (1%)	22	15

All (4) Ramachandran outliers are listed below:

Mol	Chain	Res	Type
1	A	281	ALA
1	B	276	GLY
1	B	154	GLN
1	B	277	TRP

5.3.2 Protein sidechains ⓘ

In the following table, the Percentiles column shows the percent sidechain outliers of the chain as a percentile score with respect to all X-ray entries followed by that with respect to entries of similar resolution.

The Analysed column shows the number of residues for which the sidechain conformation was analysed, and the total number of residues.

Mol	Chain	Analysed	Rotameric	Outliers	Percentiles	
1	A	232/271 (86%)	226 (97%)	6 (3%)	51	52
1	B	238/271 (88%)	233 (98%)	5 (2%)	59	62
All	All	470/542 (87%)	459 (98%)	11 (2%)	56	58

All (11) residues with a non-rotameric sidechain are listed below:

Mol	Chain	Res	Type
1	A	127	GLN
1	A	178	LEU
1	A	205	ARG
1	A	251	ARG
1	A	282	PRO
1	A	318	LEU
1	B	168	GLN
1	B	181	GLU
1	B	269	GLU
1	B	293	LEU
1	B	375	ARG

Some sidechains can be flipped to improve hydrogen bonding and reduce clashes. All (5) such sidechains are listed below:

Mol	Chain	Res	Type
1	A	242	ASN
1	A	254	HIS
1	A	261	ASN
1	B	201	HIS
1	B	380	HIS

5.3.3 RNA ⓘ

There are no RNA molecules in this entry.

5.4 Non-standard residues in protein, DNA, RNA chains ⓘ

There are no non-standard protein/DNA/RNA residues in this entry.

5.5 Carbohydrates ⓘ

There are no carbohydrates in this entry.

5.6 Ligand geometry ⓘ

Of 5 ligands modelled in this entry, 3 are monoatomic - leaving 2 for Mogul analysis.

In the following table, the Counts columns list the number of bonds (or angles) for which Mogul statistics could be retrieved, the number of bonds (or angles) that are observed in the model and the number of bonds (or angles) that are defined in the chemical component dictionary. The Link column lists molecule types, if any, to which the group is linked. The Z score for a bond length (or angle) is the number of standard deviations the observed value is removed from the expected value. A bond length (or angle) with $|Z| > 2$ is considered an outlier worth inspection. RMSZ is the root-mean-square of all Z scores of the bond lengths (or angles).

Mol	Type	Chain	Res	Link	Bond lengths			Bond angles		
					Counts	RMSZ	$\# Z > 2$	Counts	RMSZ	$\# Z > 2$
2	626	A	1389	-	32,36,36	2.43	12 (37%)	38,51,51	1.84	10 (26%)
2	626	B	1395	-	32,36,36	2.55	13 (40%)	38,51,51	1.62	5 (13%)

In the following table, the Chirals column lists the number of chiral outliers, the number of chiral centers analysed, the number of these observed in the model and the number defined in the chemical component dictionary. Similar counts are reported in the Torsion and Rings columns. '-' means no outliers of that kind were identified.

Mol	Type	Chain	Res	Link	Chirals	Torsions	Rings
2	626	A	1389	-	-	1/17/30/30	0/5/5/5
2	626	B	1395	-	-	1/17/30/30	0/5/5/5

All (25) bond length outliers are listed below:

Mol	Chain	Res	Type	Atoms	Z	Observed(Å)	Ideal(Å)
2	B	1395	626	C16-C15	-7.17	1.41	1.54
2	A	1389	626	C16-C15	-6.82	1.42	1.54
2	B	1395	626	C17-C16	-3.60	1.48	1.53
2	A	1389	626	C17-C16	-3.00	1.49	1.53
2	A	1389	626	C13-C26	2.04	1.43	1.39
2	B	1395	626	C13-C26	2.07	1.43	1.39
2	A	1389	626	C23-N22	2.12	1.51	1.46
2	A	1389	626	C12-C26	2.23	1.43	1.39
2	B	1395	626	C12-C26	2.31	1.44	1.39
2	B	1395	626	C11-C9	2.36	1.43	1.39
2	B	1395	626	C21-N22	2.38	1.51	1.46
2	A	1389	626	C11-C9	2.39	1.43	1.39
2	B	1395	626	C23-N22	2.44	1.51	1.46
2	A	1389	626	C14-C9	2.46	1.43	1.39
2	B	1395	626	C14-C9	2.63	1.43	1.39
2	A	1389	626	C32-C1	2.95	1.55	1.52
2	B	1395	626	C32-C1	3.77	1.56	1.52
2	B	1395	626	C24-N19	3.87	1.52	1.46
2	B	1395	626	C32-C31	4.13	1.54	1.51
2	B	1395	626	C20-N19	4.17	1.53	1.46
2	A	1389	626	C24-N19	4.18	1.53	1.46
2	A	1389	626	C20-N19	4.25	1.53	1.46
2	A	1389	626	C26-N19	4.36	1.50	1.38
2	B	1395	626	C26-N19	4.60	1.51	1.38
2	A	1389	626	C32-C31	4.70	1.55	1.51

All (15) bond angle outliers are listed below:

Mol	Chain	Res	Type	Atoms	Z	Observed(°)	Ideal(°)
2	A	1389	626	C31-C32-C1	-3.27	107.93	112.08
2	A	1389	626	C27-S29-C31	-2.55	90.55	91.95
2	B	1395	626	C27-S29-C31	-2.39	90.64	91.95
2	A	1389	626	C20-C21-N22	2.07	113.17	110.79
2	A	1389	626	C23-C24-N19	2.44	115.48	110.68
2	B	1395	626	C24-C23-N22	2.62	113.80	110.79
2	A	1389	626	C17-C16-C15	2.66	107.20	102.80
2	B	1395	626	C17-C16-C15	2.70	107.27	102.80

Continued on next page...

Continued from previous page...

Mol	Chain	Res	Type	Atoms	Z	Observed(°)	Ideal(°)
2	A	1389	626	C24-N19-C20	2.78	117.46	111.57
2	A	1389	626	C21-C20-N19	2.97	116.53	110.68
2	A	1389	626	C24-C23-N22	3.61	114.93	110.79
2	A	1389	626	C23-N22-C21	4.35	115.27	109.47
2	B	1395	626	C23-N22-C21	4.39	115.32	109.47
2	A	1389	626	C18-C15-C16	4.96	115.50	104.96
2	B	1395	626	C18-C15-C16	4.99	115.55	104.96

There are no chirality outliers.

All (2) torsion outliers are listed below:

Mol	Chain	Res	Type	Atoms
2	A	1389	626	C16-C5-N7-C8
2	B	1395	626	C16-C5-N7-C8

There are no ring outliers.

1 monomer is involved in 1 short contact:

Mol	Chain	Res	Type	Clashes	Symm-Clashes
2	B	1395	626	1	0

5.7 Other polymers [i](#)

There are no such residues in this entry.

5.8 Polymer linkage issues [i](#)

There are no chain breaks in this entry.

6 Fit of model and data ⓘ

6.1 Protein, DNA and RNA chains ⓘ

In the following table, the column labelled ‘#RSRZ > 2’ contains the number (and percentage) of RSRZ outliers, followed by percent RSRZ outliers for the chain as percentile scores relative to all X-ray entries and entries of similar resolution. The OWAB column contains the minimum, median, 95th percentile and maximum values of the occupancy-weighted average B-factor per residue. The column labelled ‘Q < 0.9’ lists the number of (and percentage) of residues with an average occupancy less than 0.9.

Mol	Chain	Analysed	<RSRZ>	#RSRZ>2	OWAB(Å ²)	Q<0.9
1	A	264/306 (86%)	0.38	17 (6%) 20 20	20, 34, 56, 73	0
1	B	270/306 (88%)	0.63	29 (10%) 7 7	20, 39, 62, 75	0
All	All	534/612 (87%)	0.51	46 (8%) 11 11	20, 36, 60, 75	0

All (46) RSRZ outliers are listed below:

Mol	Chain	Res	Type	RSRZ
1	B	305	MET	5.4
1	A	127	GLN	4.7
1	B	171	LYS	4.3
1	A	251	ARG	4.3
1	B	157	PHE	4.2
1	A	281	ALA	4.2
1	A	144	PHE	4.1
1	B	126	ARG	4.1
1	B	154	GLN	4.0
1	A	126	ARG	3.9
1	B	281	ALA	3.9
1	B	172	ALA	3.9
1	B	394	GLN	3.5
1	A	154	GLN	3.2
1	B	168	GLN	3.1
1	B	257	ILE	3.1
1	B	187	HIS	2.9
1	B	350	ASP	2.9
1	B	332	ASN	2.8
1	B	155	SER	2.8
1	A	143	LYS	2.8
1	B	156	LYS	2.7
1	B	304	ARG	2.7
1	A	275	PHE	2.7

Continued on next page...

Continued from previous page...

Mol	Chain	Res	Type	RSRZ
1	B	167	ALA	2.7
1	A	280	HIS	2.6
1	B	189	ARG	2.5
1	B	134	GLU	2.5
1	A	282	PRO	2.5
1	B	282	PRO	2.4
1	A	199	TYR	2.4
1	A	170	GLU	2.3
1	B	318	LEU	2.3
1	A	177	GLN	2.3
1	A	354	GLU	2.3
1	A	157	PHE	2.2
1	B	275	PHE	2.2
1	B	143	LYS	2.2
1	B	131	GLU	2.2
1	B	339	LYS	2.2
1	B	302	GLU	2.2
1	A	257	ILE	2.1
1	B	165	PHE	2.1
1	A	184	ILE	2.1
1	B	284	SER	2.1
1	B	343	ARG	2.1

6.2 Non-standard residues in protein, DNA, RNA chains [i](#)

There are no non-standard protein/DNA/RNA residues in this entry.

6.3 Carbohydrates [i](#)

There are no carbohydrates in this entry.

6.4 Ligands [i](#)

In the following table, the Atoms column lists the number of modelled atoms in the group and the number defined in the chemical component dictionary. LLDF column lists the quality of electron density of the group with respect to its neighbouring residues in protein, DNA or RNA chains. The B-factors column lists the minimum, median, 95th percentile and maximum values of B factors of atoms in the group. The column labelled 'Q < 0.9' lists the number of atoms with occupancy less than 0.9.

Mol	Type	Chain	Res	Atoms	RSCC	RSR	LLDF	B-factors(\AA^2)	Q<0.9
2	626	A	1389	32/32	0.93	0.16	0.73	23,31,44,46	0
2	626	B	1395	32/32	0.91	0.15	0.09	25,36,52,55	0
3	ARS	A	1391	1/1	0.93	0.14	-0.64	106,106,106,106	0
3	ARS	B	1396	1/1	0.97	0.08	-1.45	43,43,43,43	0
3	ARS	A	1390	1/1	0.96	0.06	-1.96	52,52,52,52	0

6.5 Other polymers [i](#)

There are no such residues in this entry.