



Full wwPDB X-ray Structure Validation Report ⓘ

Feb 14, 2017 – 08:24 am GMT

PDB ID : 1J89
Title : HUMAN HIGH AFFINITY FC RECEPTOR FC(EPSILON)RI(ALPHA),
TETRAGONAL CRYSTAL FORM 2
Authors : Garman, S.C.; Sechi, S.; Kinet, J.P.; Jardetzky, T.S.
Deposited on : 2001-05-20
Resolution : 4.10 Å(reported)

This is a Full wwPDB X-ray Structure Validation Report for a publicly released PDB entry.

We welcome your comments at validation@mail.wwpdb.org

A user guide is available at

<http://wwpdb.org/validation/2016/XrayValidationReportHelp>

with specific help available everywhere you see the ⓘ symbol.

The following versions of software and data (see [references ⓘ](#)) were used in the production of this report:

MolProbity	:	4.02b-467
Mogul	:	1.7.2 (RC1), CSD as538be (2017)
Xtriage (Phenix)	:	NOT EXECUTED
EDS	:	NOT EXECUTED
Percentile statistics	:	20161228.v01 (using entries in the PDB archive December 28th 2016)
Ideal geometry (proteins)	:	Engh & Huber (2001)
Ideal geometry (DNA, RNA)	:	Parkinson et al. (1996)
Validation Pipeline (wwPDB-VP)	:	recalc28949

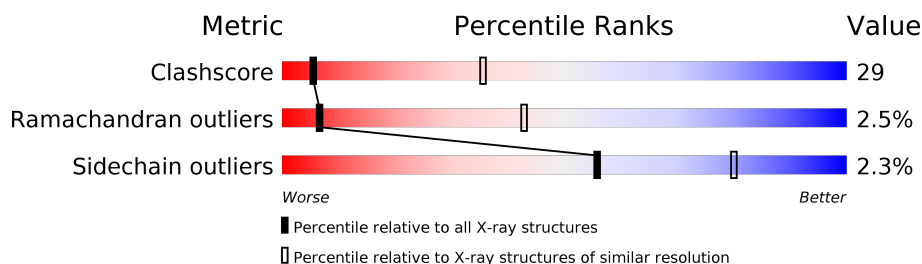
1 Overall quality at a glance

The following experimental techniques were used to determine the structure:

X-RAY DIFFRACTION

The reported resolution of this entry is 4.10 Å.

Percentile scores (ranging between 0-100) for global validation metrics of the entry are shown in the following graphic. The table shows the number of entries on which the scores are based.



Metric	Whole archive (#Entries)	Similar resolution (#Entries, resolution range(Å))
Clashscore	112137	1002 (4.54-3.66)
Ramachandran outliers	110173	1000 (4.58-3.62)
Sidechain outliers	110143	1191 (4.60-3.60)

The table below summarises the geometric issues observed across the polymeric chains and their fit to the electron density. The red, orange, yellow and green segments on the lower bar indicate the fraction of residues that contain outliers for ≥ 3 , 2, 1 and 0 types of geometric quality criteria. A grey segment represents the fraction of residues that are not modelled. The numeric value for each fraction is indicated below the corresponding segment, with a dot representing fractions $\leq 5\%$. The upper red bar (where present) indicates the fraction of residues that have poor fit to the electron density. The numeric value is given above the bar.

Note EDS was not executed.

Mol	Chain	Length	Quality of chain
1	A	172	
1	B	172	
1	C	172	
1	D	172	
1	E	172	

2 Entry composition

There are 4 unique types of molecules in this entry. The entry contains 7660 atoms, of which 0 are hydrogens and 0 are deuteriums.

In the tables below, the ZeroOcc column contains the number of atoms modelled with zero occupancy, the AltConf column contains the number of residues with at least one atom in alternate conformation and the Trace column contains the number of residues modelled with at most 2 atoms.

- Molecule 1 is a protein called HIGH AFFINITY IMMUNOGLOBULIN EPSILON RECEPTOR ALPHA-SUBUNIT.

Mol	Chain	Residues	Atoms					ZeroOcc	AltConf	Trace
1	A	168	Total	C	N	O	S	0	0	0
			1381	884	225	267	5			
1	B	168	Total	C	N	O	S	0	0	0
			1381	884	225	267	5			
1	C	168	Total	C	N	O	S	0	0	0
			1381	884	225	267	5			
1	D	168	Total	C	N	O	S	0	0	0
			1381	884	225	267	5			
1	E	168	Total	C	N	O	S	0	0	0
			1381	884	225	267	5			

- Molecule 2 is a polymer of unknown type called SUGAR (2-MER).

Mol	Chain	Residues	Atoms				ZeroOcc	AltConf
2	A	2	Total	C	N	O	0	0
			28	16	2	10		
2	A	2	Total	C	N	O	0	0
			28	16	2	10		
2	B	2	Total	C	N	O	0	0
			28	16	2	10		
2	B	2	Total	C	N	O	0	0
			28	16	2	10		
2	C	2	Total	C	N	O	0	0
			28	16	2	10		
2	C	2	Total	C	N	O	0	0
			28	16	2	10		
2	D	2	Total	C	N	O	0	0
			28	16	2	10		
2	D	2	Total	C	N	O	0	0
			28	16	2	10		
2	E	2	Total	C	N	O	0	0
			28	16	2	10		

Continued on next page...

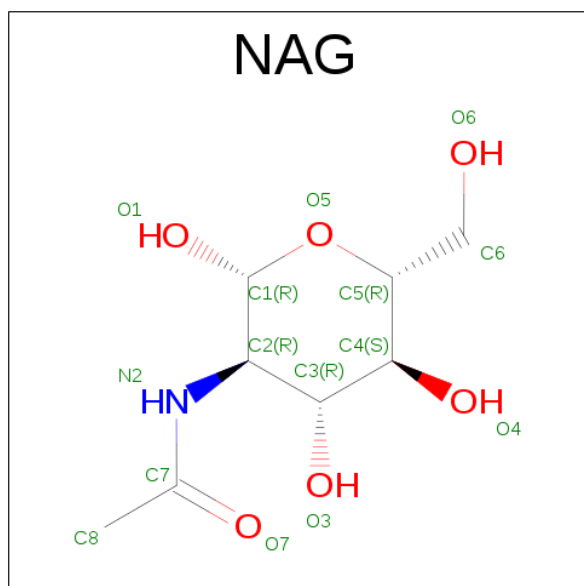
Continued from previous page...

Mol	Chain	Residues	Atoms				ZeroOcc	AltConf
2	E	2	Total	C	N	O	0	0
			28	16	2	10		

- Molecule 3 is a polymer of unknown type called SUGAR (3-MER).

Mol	Chain	Residues	Atoms				ZeroOcc	AltConf
3	A	3	Total	C	N	O	0	0
			39	22	2	15		
3	B	3	Total	C	N	O	0	0
			39	22	2	15		
3	C	3	Total	C	N	O	0	0
			39	22	2	15		
3	D	3	Total	C	N	O	0	0
			39	22	2	15		
3	E	3	Total	C	N	O	0	0
			39	22	2	15		

- Molecule 4 is SUGAR (N-ACETYL-D-GLUCOSAMINE) (three-letter code: NAG) (formula: $C_8H_{15}NO_6$).



Mol	Chain	Residues	Atoms				ZeroOcc	AltConf
4	A	1	Total	C	N	O	0	0
			14	8	1	5		
4	A	1	Total	C	N	O	0	0
			14	8	1	5		
4	A	1	Total	C	N	O	0	0
			14	8	1	5		

Continued on next page...

Continued from previous page...

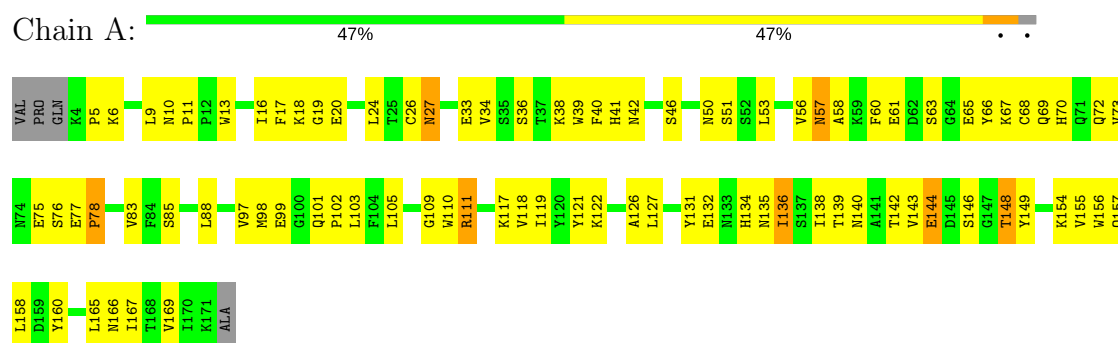
Mol	Chain	Residues	Atoms				ZeroOcc	AltConf
4	A	1	Total	C	N	O	0	0
			14	8	1	5		
4	B	1	Total	C	N	O	0	0
			14	8	1	5		
4	B	1	Total	C	N	O	0	0
			14	8	1	5		
4	B	1	Total	C	N	O	0	0
			14	8	1	5		
4	B	1	Total	C	N	O	0	0
			14	8	1	5		
4	C	1	Total	C	N	O	0	0
			14	8	1	5		
4	C	1	Total	C	N	O	0	0
			14	8	1	5		
4	C	1	Total	C	N	O	0	0
			14	8	1	5		
4	C	1	Total	C	N	O	0	0
			14	8	1	5		
4	D	1	Total	C	N	O	0	0
			14	8	1	5		
4	D	1	Total	C	N	O	0	0
			14	8	1	5		
4	D	1	Total	C	N	O	0	0
			14	8	1	5		
4	D	1	Total	C	N	O	0	0
			14	8	1	5		
4	E	1	Total	C	N	O	0	0
			14	8	1	5		
4	E	1	Total	C	N	O	0	0
			14	8	1	5		
4	E	1	Total	C	N	O	0	0
			14	8	1	5		

3 Residue-property plots

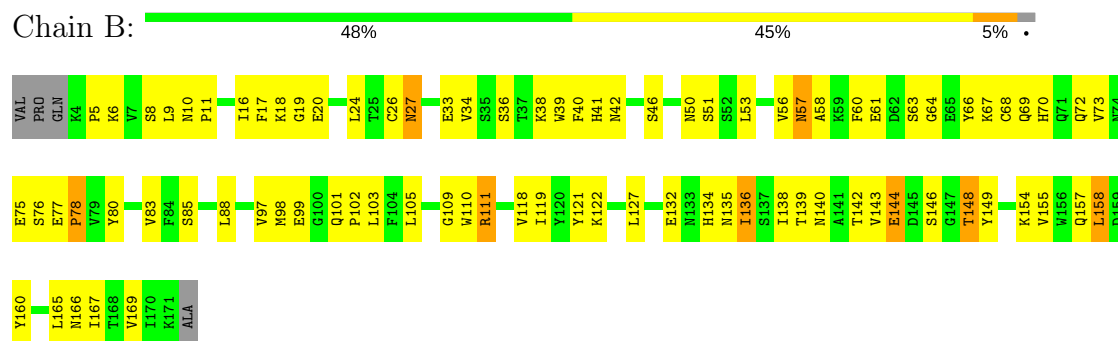
These plots are drawn for all protein, RNA and DNA chains in the entry. The first graphic for a chain summarises the proportions of the various outlier classes displayed in the second graphic. The second graphic shows the sequence view annotated by issues in geometry and electron density. Residues are color-coded according to the number of geometric quality criteria for which they contain at least one outlier: green = 0, yellow = 1, orange = 2 and red = 3 or more. A red dot above a residue indicates a poor fit to the electron density ($RSRZ > 2$). Stretches of 2 or more consecutive residues without any outlier are shown as a green connector. Residues present in the sample, but not in the model, are shown in grey.

Note EDS was not executed.

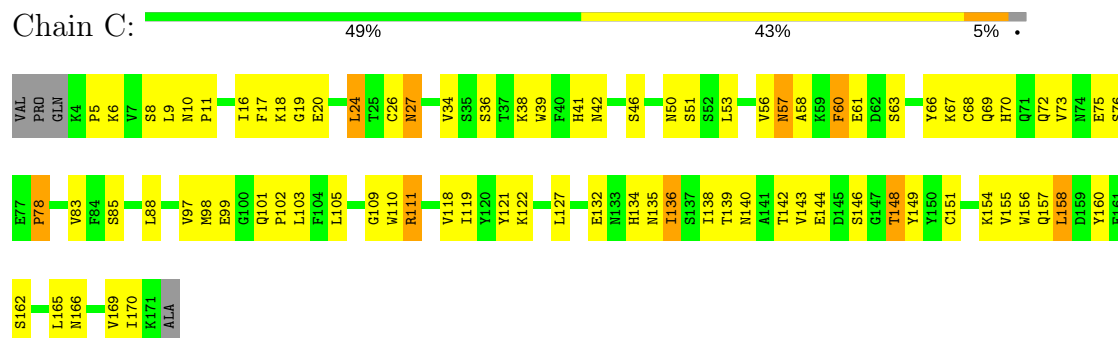
• Molecule 1: HIGH AFFINITY IMMUNOGLOBULIN EPSILON RECEPTOR ALPHA-SUBUNIT



• Molecule 1: HIGH AFFINITY IMMUNOGLOBULIN EPSILON RECEPTOR ALPHA-SUBUNIT

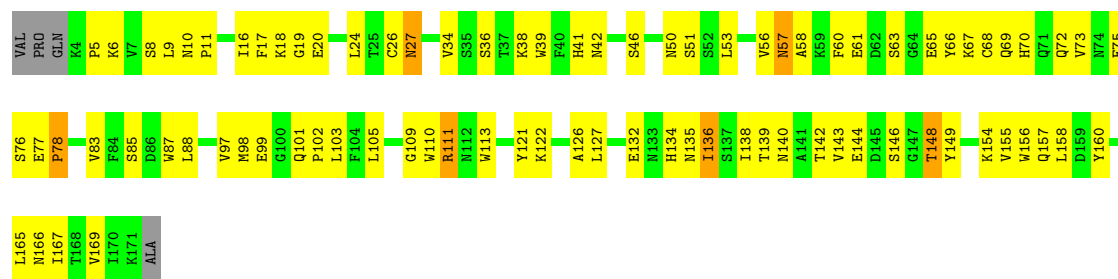


• Molecule 1: HIGH AFFINITY IMMUNOGLOBULIN EPSILON RECEPTOR ALPHA-SUBUNIT



● Molecule 1: HIGH AFFINITY IMMUNOGLOBULIN EPSILON RECEPTOR ALPHA-SUBUNIT

Chain D: 



● Molecule 1: HIGH AFFINITY IMMUNOGLOBULIN EPSILON RECEPTOR ALPHA-SUBUNIT

Chain E: 



4 Data and refinement statistics

Xtriage (Phenix) and EDS were not executed - this section is therefore incomplete.

Property	Value	Source
Space group	P 43	Depositor
Cell constants a, b, c, α , β , γ	150.50Å 150.50Å 74.18Å 90.00° 90.00° 90.00°	Depositor
Resolution (Å)	36.50 – 4.10	Depositor
% Data completeness (in resolution range)	86.8 (36.50-4.10)	Depositor
R_{merge}	0.06	Depositor
R_{sym}	(Not available)	Depositor
Refinement program	CNS 0.9	Depositor
R, R_{free}	0.273 , 0.291	Depositor
Estimated twinning fraction	No twinning to report.	Xtriage
Total number of atoms	7660	wwPDB-VP
Average B, all atoms (Å ²)	199.0	wwPDB-VP

5 Model quality [i](#)

5.1 Standard geometry [i](#)

Bond lengths and bond angles in the following residue types are not validated in this section: BMA, NAG

The Z score for a bond length (or angle) is the number of standard deviations the observed value is removed from the expected value. A bond length (or angle) with $|Z| > 5$ is considered an outlier worth inspection. RMSZ is the root-mean-square of all Z scores of the bond lengths (or angles).

Mol	Chain	Bond lengths		Bond angles	
		RMSZ	$\# Z > 5$	RMSZ	$\# Z > 5$
1	A	0.45	0/1421	0.69	1/1935 (0.1%)
1	B	0.45	0/1421	0.69	1/1935 (0.1%)
1	C	0.44	0/1421	0.68	1/1935 (0.1%)
1	D	0.44	0/1421	0.69	1/1935 (0.1%)
1	E	0.46	0/1421	0.69	0/1935
All	All	0.45	0/7105	0.69	4/9675 (0.0%)

There are no bond length outliers.

All (4) bond angle outliers are listed below:

Mol	Chain	Res	Type	Atoms	Z	Observed(°)	Ideal(°)
1	D	132	GLU	N-CA-C	-5.17	97.05	111.00
1	B	132	GLU	N-CA-C	-5.14	97.11	111.00
1	A	132	GLU	N-CA-C	-5.12	97.18	111.00
1	C	132	GLU	N-CA-C	-5.07	97.30	111.00

There are no chirality outliers.

There are no planarity outliers.

5.2 Too-close contacts [i](#)

In the following table, the Non-H and H(model) columns list the number of non-hydrogen atoms and hydrogen atoms in the chain respectively. The H(added) column lists the number of hydrogen atoms added and optimized by MolProbity. The Clashes column lists the number of clashes within the asymmetric unit, whereas Symm-Clashes lists symmetry related clashes.

Mol	Chain	Non-H	H(model)	H(added)	Clashes	Symm-Clashes
1	A	1381	0	1287	89	0
1	B	1381	0	1287	89	0

Continued on next page...

Continued from previous page...

Mol	Chain	Non-H	H(model)	H(added)	Clashes	Symm-Clashes
1	C	1381	0	1287	77	0
1	D	1381	0	1287	89	0
1	E	1381	0	1287	80	0
2	A	56	0	50	3	0
2	B	56	0	50	2	0
2	C	56	0	50	2	0
2	D	56	0	50	3	0
2	E	56	0	50	3	0
3	A	39	0	34	2	0
3	B	39	0	34	2	0
3	C	39	0	34	2	0
3	D	39	0	34	2	0
3	E	39	0	34	2	0
4	A	56	0	52	1	0
4	B	56	0	52	1	0
4	C	56	0	52	0	0
4	D	56	0	52	0	0
4	E	56	0	52	1	0
All	All	7660	0	7115	422	0

The all-atom clashscore is defined as the number of clashes found per 1000 atoms (including hydrogen atoms). The all-atom clashscore for this structure is 29.

All (422) close contacts within the same asymmetric unit are listed below, sorted by their clash magnitude.

Atom-1	Atom-2	Interatomic distance (Å)	Clash overlap (Å)
2:E:221:NAG:H61	2:E:222:NAG:N2	1.58	1.19
2:A:221:NAG:H61	2:A:222:NAG:HN2	1.05	1.17
2:D:221:NAG:H61	2:D:222:NAG:N2	1.61	1.14
2:B:221:NAG:H61	2:B:222:NAG:N2	1.62	1.13
2:A:221:NAG:H61	2:A:222:NAG:N2	1.62	1.12
2:C:221:NAG:H61	2:C:222:NAG:N2	1.64	1.11
2:B:221:NAG:H61	2:B:222:NAG:HN2	1.05	1.10
2:E:221:NAG:H61	2:E:222:NAG:HN2	1.01	1.09
1:B:72:GLN:HB3	1:D:156:TRP:CZ3	1.88	1.09
2:C:221:NAG:H61	2:C:222:NAG:HN2	1.08	1.09
2:D:221:NAG:H61	2:D:222:NAG:HN2	1.02	1.07
1:B:34:VAL:HG12	1:B:36:SER:H	1.34	0.93
1:E:34:VAL:HG12	1:E:36:SER:H	1.34	0.92
1:B:72:GLN:HB3	1:D:156:TRP:HZ3	1.30	0.90
1:D:34:VAL:HG12	1:D:36:SER:H	1.36	0.89

Continued on next page...

Continued from previous page...

Atom-1	Atom-2	Interatomic distance (Å)	Clash overlap (Å)
1:C:34:VAL:HG12	1:C:36:SER:H	1.35	0.88
1:A:34:VAL:HG12	1:A:36:SER:H	1.38	0.87
1:B:56:VAL:HG12	1:B:57:ASN:H	1.41	0.85
1:B:72:GLN:HB3	1:D:156:TRP:CE3	2.14	0.83
1:D:6:LYS:H	1:D:27:ASN:HB2	1.44	0.82
1:E:56:VAL:HG12	1:E:57:ASN:H	1.42	0.82
1:A:56:VAL:HG12	1:A:57:ASN:H	1.44	0.82
1:B:6:LYS:H	1:B:27:ASN:HB2	1.46	0.81
1:C:56:VAL:HG12	1:C:57:ASN:H	1.45	0.81
1:D:56:VAL:HG12	1:D:57:ASN:H	1.44	0.81
1:C:6:LYS:H	1:C:27:ASN:HB2	1.45	0.81
1:A:6:LYS:H	1:A:27:ASN:HB2	1.44	0.80
1:D:9:LEU:HD22	1:D:24:LEU:HD22	1.62	0.79
1:A:9:LEU:HD22	1:A:24:LEU:HD22	1.66	0.77
1:E:6:LYS:H	1:E:27:ASN:HB2	1.48	0.77
1:C:110:TRP:NE1	1:C:111:ARG:HG3	2.01	0.76
1:A:38:LYS:O	1:A:68:CYS:HA	1.86	0.75
1:B:38:LYS:O	1:B:68:CYS:HA	1.87	0.75
1:B:9:LEU:HD22	1:B:24:LEU:HD22	1.69	0.75
1:E:9:LEU:HD22	1:E:24:LEU:HD22	1.69	0.74
1:C:38:LYS:O	1:C:68:CYS:HA	1.87	0.74
1:C:165:LEU:HD12	1:C:166:ASN:N	2.02	0.73
1:A:110:TRP:NE1	1:A:111:ARG:HG3	2.04	0.73
1:D:165:LEU:HD12	1:D:166:ASN:N	2.04	0.73
1:C:9:LEU:HD22	1:C:24:LEU:HD22	1.69	0.73
1:D:38:LYS:O	1:D:68:CYS:HA	1.89	0.72
1:A:134:HIS:CG	1:A:135:ASN:H	2.08	0.72
1:E:105:LEU:HB2	1:E:136:ILE:HG23	1.70	0.71
1:B:88:LEU:HD23	1:B:109:GLY:HA2	1.72	0.71
1:E:105:LEU:HB2	1:E:136:ILE:CG2	2.21	0.71
1:D:110:TRP:NE1	1:D:111:ARG:HG3	2.06	0.70
1:B:157:GLN:O	1:B:158:LEU:HD23	1.91	0.70
1:E:39:TRP:CZ3	1:E:68:CYS:HB3	2.27	0.70
1:B:110:TRP:NE1	1:B:111:ARG:HG3	2.07	0.69
1:B:72:GLN:CB	1:D:156:TRP:HZ3	2.03	0.69
1:E:110:TRP:NE1	1:E:111:ARG:HG3	2.07	0.69
1:E:157:GLN:O	1:E:158:LEU:HD23	1.93	0.69
1:C:134:HIS:CG	1:C:135:ASN:H	2.12	0.68
1:B:105:LEU:HB2	1:B:136:ILE:HG23	1.75	0.68
1:B:105:LEU:HB2	1:B:136:ILE:CG2	2.22	0.68
1:A:105:LEU:HB2	1:A:136:ILE:HG23	1.76	0.67

Continued on next page...

Continued from previous page...

Atom-1	Atom-2	Interatomic distance (Å)	Clash overlap (Å)
1:B:39:TRP:CZ3	1:B:68:CYS:HB3	2.29	0.67
1:C:39:TRP:CZ3	1:C:68:CYS:HB3	2.30	0.67
1:D:134:HIS:CG	1:D:135:ASN:H	2.13	0.67
1:A:157:GLN:O	1:A:158:LEU:HD23	1.95	0.67
1:B:69:GLN:HG3	1:B:73:VAL:O	1.95	0.66
1:A:88:LEU:HD23	1:A:109:GLY:HA2	1.78	0.66
1:E:38:LYS:O	1:E:68:CYS:HA	1.94	0.66
1:C:157:GLN:O	1:C:158:LEU:HD23	1.96	0.66
1:D:9:LEU:CD2	1:D:24:LEU:HD22	2.25	0.66
1:B:134:HIS:CG	1:B:135:ASN:H	2.13	0.66
1:C:69:GLN:HG3	1:C:73:VAL:O	1.95	0.66
1:E:134:HIS:CG	1:E:135:ASN:H	2.13	0.66
1:A:16:ILE:O	1:A:83:VAL:HA	1.95	0.66
1:D:39:TRP:CZ3	1:D:68:CYS:HB3	2.31	0.65
1:D:69:GLN:HG3	1:D:73:VAL:O	1.95	0.65
1:D:157:GLN:O	1:D:158:LEU:HD23	1.97	0.65
1:D:16:ILE:O	1:D:83:VAL:HA	1.97	0.65
1:A:9:LEU:CD2	1:A:24:LEU:HD22	2.28	0.64
1:A:85:SER:HA	1:A:110:TRP:HZ3	1.61	0.64
1:A:126:ALA:HB1	1:E:170:ILE:HG22	1.78	0.64
1:B:33:GLU:HG2	1:D:87:TRP:CH2	2.32	0.64
1:E:88:LEU:HD23	1:E:109:GLY:HA2	1.79	0.64
1:C:16:ILE:O	1:C:83:VAL:HA	1.97	0.63
1:C:88:LEU:HD23	1:C:109:GLY:HA2	1.80	0.63
1:B:165:LEU:HD12	1:B:166:ASN:N	2.13	0.63
1:A:105:LEU:HB2	1:A:136:ILE:CG2	2.29	0.63
1:A:39:TRP:CZ3	1:A:68:CYS:HB3	2.34	0.63
1:E:69:GLN:HG3	1:E:73:VAL:O	1.98	0.63
1:A:69:GLN:HG3	1:A:73:VAL:O	1.98	0.62
1:C:105:LEU:HB2	1:C:136:ILE:HG23	1.82	0.62
1:C:165:LEU:HD12	1:C:166:ASN:H	1.63	0.62
1:D:101:GLN:HB3	1:D:102:PRO:HD2	1.82	0.62
1:D:105:LEU:HB2	1:D:136:ILE:HG23	1.81	0.62
1:A:165:LEU:HD12	1:A:166:ASN:N	2.15	0.61
1:D:85:SER:HA	1:D:110:TRP:HZ3	1.64	0.61
1:D:165:LEU:HD12	1:D:166:ASN:H	1.63	0.61
1:B:88:LEU:CD2	1:B:109:GLY:HA2	2.29	0.61
1:E:101:GLN:HB3	1:E:102:PRO:HD2	1.82	0.61
1:E:16:ILE:O	1:E:83:VAL:HA	2.01	0.61
1:B:16:ILE:O	1:B:83:VAL:HA	2.01	0.61
1:C:85:SER:HA	1:C:110:TRP:HZ3	1.65	0.61

Continued on next page...

Continued from previous page...

Atom-1	Atom-2	Interatomic distance (Å)	Clash overlap (Å)
1:D:88:LEU:HD23	1:D:109:GLY:HA2	1.83	0.60
1:C:34:VAL:HG12	1:C:36:SER:N	2.12	0.60
1:D:149:TYR:CD1	1:D:167:ILE:HD12	2.37	0.60
1:D:105:LEU:HB2	1:D:136:ILE:CG2	2.32	0.59
1:D:34:VAL:HG12	1:D:36:SER:N	2.14	0.59
1:C:110:TRP:HE1	1:C:111:ARG:HG3	1.68	0.59
1:E:85:SER:HA	1:E:110:TRP:HZ3	1.67	0.59
1:A:103:LEU:HB3	1:A:138:ILE:HB	1.85	0.59
1:B:148:THR:HG22	1:B:166:ASN:OD1	2.03	0.59
1:E:165:LEU:HD12	1:E:166:ASN:N	2.17	0.58
1:A:148:THR:HG22	1:A:166:ASN:OD1	2.03	0.58
1:B:9:LEU:CD2	1:B:24:LEU:HD22	2.34	0.58
1:B:101:GLN:HB3	1:B:102:PRO:HD2	1.85	0.58
1:E:148:THR:HG22	1:E:166:ASN:OD1	2.02	0.58
1:A:66:TYR:O	1:A:78:PRO:HA	2.03	0.58
1:A:101:GLN:HB3	1:A:102:PRO:HD2	1.85	0.58
1:C:105:LEU:HB2	1:C:136:ILE:CG2	2.33	0.57
1:E:66:TYR:O	1:E:78:PRO:HA	2.04	0.57
1:A:88:LEU:CD2	1:A:109:GLY:HA2	2.35	0.57
1:B:34:VAL:HG12	1:B:36:SER:N	2.13	0.57
1:C:101:GLN:HB3	1:C:102:PRO:HD2	1.85	0.57
1:B:73:VAL:HG22	1:D:156:TRP:HH2	1.69	0.57
1:D:103:LEU:HB3	1:D:138:ILE:HB	1.86	0.57
1:C:66:TYR:O	1:C:78:PRO:HA	2.05	0.57
1:D:122:LYS:NZ	1:D:144:GLU:O	2.35	0.57
1:A:122:LYS:NZ	1:A:144:GLU:O	2.36	0.57
1:D:148:THR:HG22	1:D:166:ASN:OD1	2.05	0.57
1:D:69:GLN:HB2	1:D:75:GLU:HA	1.87	0.57
1:E:9:LEU:CD2	1:E:24:LEU:HD22	2.34	0.56
1:B:66:TYR:O	1:B:78:PRO:HA	2.05	0.56
1:A:110:TRP:HE1	1:A:111:ARG:HG3	1.70	0.56
1:D:88:LEU:CD2	1:D:109:GLY:HA2	2.35	0.56
1:B:85:SER:HA	1:B:110:TRP:HZ3	1.70	0.56
1:D:66:TYR:O	1:D:78:PRO:HA	2.05	0.56
1:B:39:TRP:HB2	1:B:46:SER:HB3	1.88	0.56
1:C:69:GLN:HB2	1:C:75:GLU:HA	1.88	0.56
1:E:88:LEU:CD2	1:E:109:GLY:HA2	2.35	0.55
1:B:101:GLN:HA	1:B:101:GLN:OE1	2.04	0.55
1:E:34:VAL:HG12	1:E:36:SER:N	2.13	0.55
1:E:103:LEU:HB3	1:E:138:ILE:HB	1.88	0.55
1:A:39:TRP:HB2	1:A:46:SER:HB3	1.89	0.55

Continued on next page...

Continued from previous page...

Atom-1	Atom-2	Interatomic distance (Å)	Clash overlap (Å)
1:A:134:HIS:CD2	1:A:135:ASN:H	2.24	0.55
1:B:146:SER:OG	1:B:169:VAL:HB	2.07	0.55
1:C:5:PRO:HG2	1:C:76:SER:HB3	1.89	0.55
1:E:97:VAL:HB	1:E:169:VAL:HG22	1.89	0.55
1:A:34:VAL:HG12	1:A:36:SER:N	2.16	0.55
1:C:63:SER:O	3:C:242:NAG:H3	2.07	0.55
1:B:97:VAL:CG1	1:B:101:GLN:HB2	2.37	0.54
1:A:110:TRP:CD1	1:A:111:ARG:HG3	2.42	0.54
1:A:134:HIS:CG	1:A:135:ASN:N	2.74	0.54
1:C:103:LEU:HB3	1:C:138:ILE:HB	1.89	0.54
1:E:97:VAL:HG12	1:E:98:MET:N	2.22	0.54
1:C:170:ILE:HG22	1:D:126:ALA:HB1	1.89	0.54
1:C:134:HIS:CD2	1:C:135:ASN:H	2.26	0.53
1:B:165:LEU:HD12	1:B:166:ASN:H	1.72	0.53
1:D:39:TRP:NE1	1:D:53:LEU:HB2	2.23	0.53
1:E:5:PRO:HG2	1:E:76:SER:HB3	1.91	0.53
1:A:136:ILE:O	1:A:136:ILE:HG23	2.09	0.53
1:C:41:HIS:CD2	3:C:242:NAG:H82	2.44	0.53
1:E:69:GLN:HB2	1:E:75:GLU:HA	1.89	0.53
1:B:103:LEU:HB3	1:B:138:ILE:HB	1.91	0.53
1:C:9:LEU:CD2	1:C:24:LEU:HD22	2.38	0.53
1:D:110:TRP:HE1	1:D:111:ARG:HG3	1.73	0.53
1:A:97:VAL:CG1	1:A:101:GLN:HB2	2.39	0.53
1:C:110:TRP:CD1	1:C:111:ARG:HG3	2.42	0.53
1:A:69:GLN:HB2	1:A:75:GLU:HA	1.91	0.53
1:B:97:VAL:HG12	1:B:98:MET:N	2.23	0.53
1:C:97:VAL:CG1	1:C:101:GLN:HB2	2.38	0.53
1:B:41:HIS:CD2	3:B:242:NAG:H82	2.44	0.52
1:C:56:VAL:O	1:C:57:ASN:C	2.47	0.52
1:E:97:VAL:CG1	1:E:101:GLN:HB2	2.39	0.52
1:B:69:GLN:HB2	1:B:75:GLU:HA	1.91	0.52
1:A:165:LEU:HD12	1:A:166:ASN:H	1.73	0.52
1:A:41:HIS:CD2	3:A:242:NAG:H82	2.45	0.52
1:C:6:LYS:N	1:C:27:ASN:HB2	2.22	0.52
1:C:154:LYS:HE2	1:C:157:GLN:HA	1.91	0.51
1:D:56:VAL:O	1:D:57:ASN:C	2.48	0.51
1:B:33:GLU:HG2	1:D:87:TRP:CZ2	2.45	0.51
1:E:134:HIS:CG	1:E:135:ASN:N	2.77	0.51
1:E:34:VAL:CG1	1:E:36:SER:H	2.17	0.51
1:C:88:LEU:CD2	1:C:109:GLY:HA2	2.38	0.51
1:A:70:HIS:HB2	1:A:73:VAL:CG2	2.39	0.51

Continued on next page...

Continued from previous page...

Atom-1	Atom-2	Interatomic distance (Å)	Clash overlap (Å)
1:C:41:HIS:O	1:C:42:ASN:HB2	2.11	0.51
1:D:70:HIS:HB2	1:D:73:VAL:CG2	2.41	0.51
1:B:122:LYS:NZ	1:B:144:GLU:O	2.42	0.51
1:B:63:SER:O	3:B:242:NAG:H3	2.10	0.51
1:D:97:VAL:CG1	1:D:101:GLN:HB2	2.41	0.51
1:D:134:HIS:CD2	1:D:135:ASN:H	2.29	0.51
1:B:134:HIS:CG	1:B:135:ASN:N	2.79	0.51
1:B:136:ILE:O	1:B:136:ILE:HG23	2.10	0.51
1:E:121:TYR:O	1:E:149:TYR:HA	2.09	0.51
1:E:122:LYS:NZ	1:E:144:GLU:O	2.40	0.51
1:B:70:HIS:HB2	1:B:73:VAL:CG2	2.41	0.51
1:E:56:VAL:O	1:E:57:ASN:C	2.49	0.51
1:A:63:SER:O	3:A:242:NAG:H3	2.11	0.50
1:B:56:VAL:O	1:B:57:ASN:C	2.48	0.50
1:B:5:PRO:HG2	1:B:76:SER:HB3	1.93	0.50
1:C:39:TRP:HB2	1:C:46:SER:HB3	1.93	0.50
1:E:110:TRP:CD1	1:E:111:ARG:HG3	2.46	0.50
1:E:41:HIS:CD2	3:E:242:NAG:H82	2.46	0.50
1:B:39:TRP:NE1	1:B:53:LEU:HB2	2.26	0.50
1:D:63:SER:O	3:D:242:NAG:H3	2.11	0.50
1:C:17:PHE:O	1:C:83:VAL:HG13	2.12	0.50
1:A:146:SER:OG	1:A:169:VAL:HB	2.11	0.50
1:A:56:VAL:O	1:A:57:ASN:C	2.50	0.50
1:D:110:TRP:CD1	1:D:111:ARG:HG3	2.46	0.50
1:D:50:ASN:OD1	1:D:51:SER:N	2.45	0.50
1:A:97:VAL:HG12	1:A:98:MET:N	2.27	0.50
1:B:110:TRP:CD1	1:B:111:ARG:HG3	2.46	0.50
1:C:70:HIS:HB2	1:C:73:VAL:CG2	2.41	0.50
1:E:39:TRP:HB2	1:E:46:SER:HB3	1.94	0.50
1:C:148:THR:HG22	1:C:166:ASN:OD1	2.11	0.50
1:E:56:VAL:HG12	1:E:57:ASN:N	2.20	0.50
1:C:26:CYS:O	1:C:27:ASN:C	2.51	0.50
1:E:134:HIS:CD2	1:E:135:ASN:H	2.30	0.50
1:E:136:ILE:HG23	1:E:136:ILE:O	2.12	0.49
1:E:165:LEU:HD12	1:E:166:ASN:H	1.77	0.49
1:D:9:LEU:HD22	1:D:24:LEU:CD2	2.39	0.49
1:B:134:HIS:CD2	1:B:135:ASN:H	2.29	0.49
1:C:122:LYS:NZ	1:C:144:GLU:O	2.40	0.49
1:A:131:TYR:HE2	1:E:65:GLU:OE2	1.95	0.49
1:D:146:SER:OG	1:D:169:VAL:HB	2.12	0.49
2:E:221:NAG:C6	2:E:222:NAG:N2	2.52	0.49

Continued on next page...

Continued from previous page...

Atom-1	Atom-2	Interatomic distance (Å)	Clash overlap (Å)
1:C:34:VAL:CG1	1:C:36:SER:H	2.16	0.49
1:B:6:LYS:N	1:B:27:ASN:HB2	2.22	0.49
1:B:61:GLU:CD	1:B:61:GLU:H	2.15	0.49
1:B:97:VAL:HB	1:B:169:VAL:HG22	1.95	0.49
1:C:101:GLN:HA	1:C:101:GLN:OE1	2.12	0.49
1:C:17:PHE:CE1	1:C:110:TRP:HA	2.46	0.49
1:D:39:TRP:HB2	1:D:46:SER:HB3	1.94	0.49
1:A:26:CYS:O	1:A:27:ASN:C	2.51	0.49
1:A:101:GLN:OE1	1:A:101:GLN:HA	2.11	0.49
1:E:70:HIS:HB2	1:E:73:VAL:CG2	2.42	0.49
1:D:26:CYS:O	1:D:27:ASN:C	2.51	0.48
1:A:50:ASN:OD1	1:A:51:SER:N	2.46	0.48
1:A:97:VAL:HB	1:A:169:VAL:HG22	1.94	0.48
1:B:121:TYR:O	1:B:149:TYR:HA	2.12	0.48
1:D:5:PRO:HG2	1:D:76:SER:HB3	1.95	0.48
1:E:110:TRP:HE1	1:E:111:ARG:HG3	1.75	0.48
1:E:50:ASN:OD1	1:E:51:SER:N	2.46	0.48
1:B:110:TRP:HE1	1:B:111:ARG:HG3	1.77	0.48
1:B:5:PRO:HD3	1:B:73:VAL:CG1	2.43	0.48
1:D:136:ILE:HG23	1:D:136:ILE:O	2.13	0.48
1:D:41:HIS:CD2	3:D:242:NAG:H82	2.48	0.48
1:D:97:VAL:HG12	1:D:98:MET:N	2.28	0.48
1:E:6:LYS:N	1:E:27:ASN:HB2	2.25	0.48
1:A:17:PHE:CE1	1:A:110:TRP:HA	2.49	0.48
1:E:101:GLN:OE1	1:E:101:GLN:HA	2.14	0.48
1:C:134:HIS:CG	1:C:135:ASN:N	2.77	0.48
1:D:134:HIS:CG	1:D:135:ASN:N	2.78	0.48
1:B:56:VAL:HG12	1:B:57:ASN:N	2.18	0.48
1:D:41:HIS:O	1:D:42:ASN:HB2	2.13	0.48
1:C:102:PRO:HA	1:C:139:THR:O	2.14	0.47
1:D:101:GLN:HA	1:D:101:GLN:OE1	2.14	0.47
1:E:39:TRP:NE1	1:E:53:LEU:HB2	2.28	0.47
2:A:221:NAG:C6	2:A:222:NAG:N2	2.56	0.47
1:A:41:HIS:O	1:A:42:ASN:HB2	2.13	0.47
1:A:5:PRO:HD3	1:A:73:VAL:CG1	2.44	0.47
1:A:139:THR:OG1	1:A:140:ASN:N	2.47	0.47
1:A:5:PRO:HG2	1:A:76:SER:HB3	1.97	0.47
1:E:26:CYS:O	1:E:27:ASN:C	2.51	0.47
1:E:18:LYS:HD2	1:E:60:PHE:CZ	2.50	0.47
1:A:19:GLY:H	1:A:58:ALA:HB3	1.80	0.47
1:B:154:LYS:HE2	1:B:157:GLN:HA	1.96	0.47

Continued on next page...

Continued from previous page...

Atom-1	Atom-2	Interatomic distance (Å)	Clash overlap (Å)
1:D:6:LYS:N	1:D:27:ASN:HB2	2.21	0.47
1:A:149:TYR:CD1	1:A:167:ILE:HD12	2.49	0.47
1:D:5:PRO:HD3	1:D:73:VAL:CG1	2.45	0.47
1:E:118:VAL:C	1:E:119:ILE:HG13	2.36	0.47
1:A:6:LYS:N	1:A:27:ASN:HB2	2.22	0.47
1:B:34:VAL:CG1	1:B:36:SER:H	2.17	0.47
1:B:41:HIS:O	1:B:42:ASN:HB2	2.14	0.47
1:B:72:GLN:CB	1:D:156:TRP:CZ3	2.77	0.47
1:C:50:ASN:OD1	1:C:51:SER:N	2.47	0.46
1:A:98:MET:O	1:A:99:GLU:C	2.52	0.46
1:B:70:HIS:HB2	1:B:73:VAL:HG23	1.98	0.46
1:D:34:VAL:CG1	1:D:36:SER:H	2.19	0.46
1:C:39:TRP:HA	1:C:67:LYS:O	2.15	0.46
1:E:63:SER:O	3:E:242:NAG:H3	2.15	0.46
1:E:5:PRO:HD3	1:E:73:VAL:CG1	2.46	0.46
1:D:56:VAL:HG12	1:D:57:ASN:N	2.22	0.46
1:A:143:VAL:HG23	1:A:169:VAL:O	2.16	0.46
1:C:18:LYS:HD2	1:C:60:PHE:CZ	2.51	0.46
1:C:146:SER:OG	1:C:169:VAL:HB	2.16	0.46
1:D:17:PHE:CE1	1:D:110:TRP:HA	2.51	0.46
1:A:34:VAL:CG1	1:A:36:SER:H	2.20	0.45
1:B:72:GLN:O	1:B:72:GLN:HG2	2.16	0.45
1:D:154:LYS:HE2	1:D:157:GLN:HA	1.97	0.45
1:D:149:TYR:CE1	1:D:167:ILE:HD12	2.51	0.45
1:E:146:SER:OG	1:E:169:VAL:HB	2.16	0.45
1:B:19:GLY:H	1:B:58:ALA:HB3	1.81	0.45
1:E:17:PHE:CE1	1:E:110:TRP:HA	2.51	0.45
1:E:41:HIS:O	1:E:42:ASN:HB2	2.16	0.45
1:C:136:ILE:HG23	1:C:136:ILE:O	2.17	0.45
1:C:155:VAL:HB	1:C:160:TYR:CE1	2.51	0.45
1:A:18:LYS:HD2	1:A:60:PHE:CZ	2.50	0.45
1:B:50:ASN:OD1	1:B:51:SER:N	2.50	0.45
1:D:97:VAL:HB	1:D:169:VAL:HG22	1.98	0.45
1:E:142:THR:HG22	1:E:143:VAL:N	2.31	0.45
1:A:146:SER:OG	1:A:169:VAL:N	2.40	0.45
1:A:61:GLU:H	1:A:61:GLU:CD	2.20	0.45
1:A:70:HIS:HB2	1:A:73:VAL:HG23	1.98	0.45
1:B:26:CYS:O	1:B:27:ASN:C	2.54	0.45
1:D:101:GLN:HB3	1:D:102:PRO:CD	2.46	0.45
1:A:39:TRP:NE1	1:A:53:LEU:HB2	2.32	0.45
1:C:97:VAL:HG12	1:C:98:MET:N	2.32	0.45

Continued on next page...

Continued from previous page...

Atom-1	Atom-2	Interatomic distance (Å)	Clash overlap (Å)
1:A:155:VAL:O	1:A:156:TRP:HB2	2.17	0.45
1:C:118:VAL:C	1:C:119:ILE:HG13	2.37	0.45
1:D:139:THR:OG1	1:D:140:ASN:N	2.47	0.45
1:D:18:LYS:HD2	1:D:60:PHE:CZ	2.51	0.45
1:E:17:PHE:HB2	1:E:20:GLU:CD	2.37	0.45
1:D:61:GLU:H	1:D:61:GLU:CD	2.20	0.44
1:C:97:VAL:HB	1:C:169:VAL:HG22	1.99	0.44
1:D:98:MET:O	1:D:99:GLU:C	2.55	0.44
1:A:56:VAL:HG12	1:A:57:ASN:N	2.22	0.44
1:E:61:GLU:CD	1:E:61:GLU:H	2.20	0.44
1:C:39:TRP:CE3	1:C:68:CYS:HB3	2.52	0.44
1:D:8:SER:O	1:D:9:LEU:HD23	2.17	0.44
1:A:10:ASN:HA	1:A:11:PRO:C	2.37	0.44
1:C:127:LEU:HA	1:C:127:LEU:HD12	1.75	0.44
1:C:70:HIS:HB2	1:C:73:VAL:HG23	1.99	0.44
1:B:73:VAL:CG2	1:D:156:TRP:HH2	2.29	0.44
1:E:139:THR:OG1	1:E:140:ASN:N	2.48	0.44
1:C:5:PRO:HD3	1:C:73:VAL:CG1	2.48	0.44
1:B:142:THR:HG22	1:B:144:GLU:H	1.82	0.44
1:C:97:VAL:HG12	1:C:101:GLN:HB2	1.99	0.44
1:B:139:THR:OG1	1:B:140:ASN:N	2.47	0.43
1:B:149:TYR:CD1	1:B:167:ILE:HD12	2.53	0.43
1:C:39:TRP:NE1	1:C:53:LEU:HB2	2.33	0.43
1:E:149:TYR:CD1	1:E:167:ILE:HD12	2.53	0.43
1:E:19:GLY:H	1:E:58:ALA:HB3	1.83	0.43
1:B:5:PRO:HD3	1:B:73:VAL:HG11	1.99	0.43
1:D:155:VAL:HB	1:D:160:TYR:CE1	2.53	0.43
1:D:10:ASN:HA	1:D:11:PRO:C	2.39	0.43
1:B:39:TRP:HA	1:B:67:LYS:O	2.19	0.43
1:D:121:TYR:O	1:D:149:TYR:HA	2.18	0.43
1:A:102:PRO:HA	1:A:139:THR:O	2.18	0.43
1:B:17:PHE:CE1	1:B:110:TRP:HA	2.53	0.43
1:E:154:LYS:HE2	1:E:157:GLN:HA	2.00	0.43
1:B:10:ASN:HA	1:B:11:PRO:C	2.38	0.43
1:A:77:GLU:OE1	1:A:77:GLU:HA	2.18	0.43
1:B:118:VAL:C	1:B:119:ILE:HG13	2.38	0.43
1:E:10:ASN:HA	1:E:11:PRO:C	2.39	0.43
1:E:39:TRP:HA	1:E:67:LYS:O	2.19	0.43
1:A:72:GLN:O	1:A:72:GLN:HG2	2.18	0.43
1:C:10:ASN:HA	1:C:11:PRO:C	2.39	0.43
1:D:142:THR:HG22	1:D:143:VAL:N	2.33	0.43

Continued on next page...

Continued from previous page...

Atom-1	Atom-2	Interatomic distance (Å)	Clash overlap (Å)
1:E:5:PRO:HD3	1:E:73:VAL:HG11	2.01	0.43
1:A:121:TYR:O	1:A:149:TYR:HA	2.19	0.43
1:A:9:LEU:HD22	1:A:24:LEU:CD2	2.42	0.43
1:D:70:HIS:HB2	1:D:73:VAL:HG23	2.00	0.42
1:B:127:LEU:HD12	1:B:127:LEU:HA	1.74	0.42
1:C:155:VAL:O	1:C:156:TRP:HB2	2.19	0.42
1:B:39:TRP:CE3	1:B:68:CYS:HB3	2.54	0.42
1:A:126:ALA:CB	1:E:170:ILE:HG22	2.47	0.42
1:E:39:TRP:CE3	1:E:68:CYS:HB3	2.54	0.42
1:A:65:GLU:CG	1:A:78:PRO:HB3	2.50	0.42
1:A:40:PHE:HB2	1:A:67:LYS:CG	2.50	0.42
1:B:17:PHE:HB2	1:B:20:GLU:CD	2.39	0.42
1:B:61:GLU:CD	1:B:61:GLU:N	2.73	0.42
1:E:50:ASN:OD1	4:E:250:NAG:O5	2.38	0.42
1:A:142:THR:HG22	1:A:143:VAL:N	2.34	0.42
1:A:33:GLU:CD	1:C:158:LEU:HG	2.40	0.42
1:D:39:TRP:CE3	1:D:68:CYS:HB3	2.54	0.42
1:D:39:TRP:HA	1:D:67:LYS:O	2.20	0.42
1:E:72:GLN:HG2	1:E:72:GLN:O	2.20	0.42
1:B:18:LYS:HD2	1:B:60:PHE:CZ	2.54	0.42
1:C:121:TYR:O	1:C:149:TYR:HA	2.19	0.42
1:C:170:ILE:HG22	1:D:126:ALA:CB	2.50	0.42
1:E:101:GLN:HB3	1:E:102:PRO:CD	2.46	0.42
1:E:70:HIS:HB2	1:E:73:VAL:HG23	2.01	0.42
1:C:8:SER:O	1:C:9:LEU:HD23	2.20	0.42
1:A:154:LYS:HE2	1:A:157:GLN:HA	2.02	0.42
1:C:72:GLN:HG2	1:C:72:GLN:O	2.19	0.42
1:D:77:GLU:HA	1:D:77:GLU:OE1	2.19	0.42
1:A:127:LEU:HD12	1:A:127:LEU:HA	1.78	0.42
1:B:155:VAL:HB	1:B:160:TYR:CE1	2.55	0.42
1:B:98:MET:O	1:B:99:GLU:C	2.59	0.42
1:C:98:MET:O	1:C:99:GLU:C	2.59	0.42
1:D:17:PHE:HB2	1:D:20:GLU:CD	2.40	0.42
1:A:97:VAL:HG12	1:A:101:GLN:HB2	2.02	0.41
1:A:5:PRO:HD3	1:A:73:VAL:HG11	2.02	0.41
1:D:155:VAL:O	1:D:156:TRP:HB2	2.20	0.41
1:E:97:VAL:O	1:E:169:VAL:HA	2.19	0.41
1:A:101:GLN:HB3	1:A:102:PRO:CD	2.49	0.41
1:C:139:THR:OG1	1:C:140:ASN:N	2.48	0.41
1:E:155:VAL:HB	1:E:160:TYR:CE1	2.54	0.41
1:E:127:LEU:HA	1:E:127:LEU:HD12	1.83	0.41

Continued on next page...

Continued from previous page...

Atom-1	Atom-2	Interatomic distance (Å)	Clash overlap (Å)
1:A:143:VAL:HA	1:A:169:VAL:CG1	2.50	0.41
1:B:142:THR:HG22	1:B:143:VAL:N	2.35	0.41
1:D:127:LEU:HA	1:D:127:LEU:HD12	1.74	0.41
1:D:72:GLN:HG2	1:D:72:GLN:O	2.20	0.41
1:D:97:VAL:O	1:D:169:VAL:HA	2.20	0.41
1:C:151:CYS:H	1:C:162:SER:HG	1.68	0.41
1:E:117:LYS:HE2	1:E:117:LYS:HB3	1.89	0.41
1:A:117:LYS:HB3	1:A:117:LYS:HE2	1.92	0.41
1:A:13:TRP:HA	1:A:13:TRP:HE3	1.86	0.41
1:B:102:PRO:HA	1:B:139:THR:O	2.20	0.41
1:D:97:VAL:HG12	1:D:101:GLN:HB2	2.01	0.41
1:E:102:PRO:HA	1:E:139:THR:O	2.20	0.41
1:B:101:GLN:CA	1:B:101:GLN:OE1	2.69	0.41
1:B:40:PHE:HB2	1:B:67:LYS:CG	2.51	0.41
1:C:19:GLY:H	1:C:58:ALA:HB3	1.86	0.41
1:C:61:GLU:H	1:C:61:GLU:CD	2.24	0.41
1:A:39:TRP:HA	1:A:67:LYS:O	2.21	0.41
2:D:221:NAG:C6	2:D:222:NAG:N2	2.55	0.41
1:B:97:VAL:HG12	1:B:101:GLN:HB2	2.02	0.41
1:B:77:GLU:OE1	1:B:77:GLU:HA	2.21	0.41
1:B:64:GLY:O	1:B:80:TYR:HA	2.21	0.41
1:B:8:SER:O	1:B:9:LEU:HD23	2.21	0.41
1:C:142:THR:HG22	1:C:143:VAL:N	2.35	0.41
1:E:155:VAL:O	1:E:156:TRP:HB2	2.21	0.41
1:D:19:GLY:H	1:D:58:ALA:HB3	1.85	0.41
1:D:61:GLU:CD	1:D:61:GLU:N	2.75	0.41
1:C:142:THR:HG22	1:C:144:GLU:H	1.86	0.40
1:E:77:GLU:OE1	1:E:77:GLU:HA	2.21	0.40
1:A:155:VAL:HB	1:A:160:TYR:CE1	2.57	0.40
1:A:17:PHE:O	1:A:83:VAL:HG13	2.22	0.40
1:C:17:PHE:HB2	1:C:20:GLU:CD	2.41	0.40
1:A:50:ASN:OD1	4:A:250:NAG:O5	2.39	0.40
1:A:61:GLU:N	1:A:61:GLU:CD	2.75	0.40
1:B:50:ASN:OD1	4:B:250:NAG:O5	2.39	0.40
1:A:118:VAL:C	1:A:119:ILE:HG13	2.42	0.40
1:A:17:PHE:HB2	1:A:20:GLU:CD	2.42	0.40
1:D:65:GLU:CG	1:D:78:PRO:HB3	2.51	0.40
1:E:65:GLU:CG	1:E:78:PRO:HB3	2.51	0.40

There are no symmetry-related clashes.

5.3 Torsion angles

5.3.1 Protein backbone

In the following table, the Percentiles column shows the percent Ramachandran outliers of the chain as a percentile score with respect to all X-ray entries followed by that with respect to entries of similar resolution.

The Analysed column shows the number of residues for which the backbone conformation was analysed, and the total number of residues.

Mol	Chain	Analysed	Favoured	Allowed	Outliers	Percentiles	
1	A	166/172 (96%)	137 (82%)	25 (15%)	4 (2%)	7	44
1	B	166/172 (96%)	141 (85%)	21 (13%)	4 (2%)	7	44
1	C	166/172 (96%)	139 (84%)	22 (13%)	5 (3%)	5	39
1	D	166/172 (96%)	139 (84%)	22 (13%)	5 (3%)	5	39
1	E	166/172 (96%)	141 (85%)	22 (13%)	3 (2%)	10	50
All	All	830/860 (96%)	697 (84%)	112 (14%)	21 (2%)	6	43

All (21) Ramachandran outliers are listed below:

Mol	Chain	Res	Type
1	A	27	ASN
1	A	57	ASN
1	B	27	ASN
1	B	57	ASN
1	C	27	ASN
1	C	57	ASN
1	D	27	ASN
1	D	57	ASN
1	E	27	ASN
1	E	57	ASN
1	A	136	ILE
1	B	136	ILE
1	C	136	ILE
1	C	60	PHE
1	D	136	ILE
1	E	136	ILE
1	D	113	TRP
1	B	78	PRO
1	C	78	PRO
1	D	78	PRO
1	A	78	PRO

5.3.2 Protein sidechains ⓘ

In the following table, the Percentiles column shows the percent sidechain outliers of the chain as a percentile score with respect to all X-ray entries followed by that with respect to entries of similar resolution.

The Analysed column shows the number of residues for which the sidechain conformation was analysed, and the total number of residues.

Mol	Chain	Analysed	Rotameric	Outliers	Percentiles	
1	A	154/157 (98%)	151 (98%)	3 (2%)	62	83
1	B	154/157 (98%)	150 (97%)	4 (3%)	51	77
1	C	154/157 (98%)	150 (97%)	4 (3%)	51	77
1	D	154/157 (98%)	152 (99%)	2 (1%)	73	88
1	E	154/157 (98%)	149 (97%)	5 (3%)	44	73
All	All	770/785 (98%)	752 (98%)	18 (2%)	56	80

All (18) residues with a non-rotameric sidechain are listed below:

Mol	Chain	Res	Type
1	A	111	ARG
1	A	144	GLU
1	A	148	THR
1	B	111	ARG
1	B	144	GLU
1	B	148	THR
1	B	158	LEU
1	C	24	LEU
1	C	111	ARG
1	C	148	THR
1	C	158	LEU
1	D	111	ARG
1	D	148	THR
1	E	24	LEU
1	E	111	ARG
1	E	144	GLU
1	E	148	THR
1	E	158	LEU

Some sidechains can be flipped to improve hydrogen bonding and reduce clashes. All (5) such sidechains are listed below:

Mol	Chain	Res	Type
1	A	134	HIS
1	B	134	HIS
1	C	134	HIS
1	D	134	HIS
1	E	134	HIS

5.3.3 RNA ⓘ

There are no RNA molecules in this entry.

5.4 Non-standard residues in protein, DNA, RNA chains ⓘ

There are no non-standard protein/DNA/RNA residues in this entry.

5.5 Carbohydrates ⓘ

35 carbohydrates are modelled in this entry.

In the following table, the Counts columns list the number of bonds (or angles) for which Mogul statistics could be retrieved, the number of bonds (or angles) that are observed in the model and the number of bonds (or angles) that are defined in the chemical component dictionary. The Link column lists molecule types, if any, to which the group is linked. The Z score for a bond length (or angle) is the number of standard deviations the observed value is removed from the expected value. A bond length (or angle) with $|Z| > 2$ is considered an outlier worth inspection. RMSZ is the root-mean-square of all Z scores of the bond lengths (or angles).

Mol	Type	Chain	Res	Link	Bond lengths			Bond angles		
					Counts	RMSZ	$\# Z > 2$	Counts	RMSZ	$\# Z > 2$
2	NAG	A	221	1,2	14,14,15	0.77	0	15,19,21	0.85	1 (6%)
2	NAG	A	222	2	14,14,15	0.98	1 (7%)	15,19,21	0.64	0
3	NAG	A	242	1,3	14,14,15	0.57	0	15,19,21	0.96	1 (6%)
3	NAG	A	243	3	14,14,15	0.64	0	15,19,21	1.24	2 (13%)
3	BMA	A	244	3	11,11,12	0.71	0	13,15,17	1.05	1 (7%)
2	NAG	A	366	1,2	14,14,15	0.48	0	15,19,21	0.71	0
2	NAG	A	367	2	14,14,15	0.58	0	15,19,21	0.86	1 (6%)
2	NAG	B	221	1,2	14,14,15	0.73	0	15,19,21	0.87	1 (6%)
2	NAG	B	222	2	14,14,15	1.00	1 (7%)	15,19,21	0.64	0
3	NAG	B	242	1,3	14,14,15	0.58	0	15,19,21	0.97	1 (6%)
3	NAG	B	243	3	14,14,15	0.59	0	15,19,21	1.19	2 (13%)
3	BMA	B	244	3	11,11,12	0.64	0	13,15,17	1.02	1 (7%)

Mol	Type	Chain	Res	Link	Bond lengths			Bond angles		
					Counts	RMSZ	# Z > 2	Counts	RMSZ	# Z > 2
2	NAG	B	366	1,2	14,14,15	0.54	0	15,19,21	0.75	0
2	NAG	B	367	2	14,14,15	0.54	0	15,19,21	0.84	1 (6%)
2	NAG	C	221	1,2	14,14,15	0.81	0	15,19,21	0.87	1 (6%)
2	NAG	C	222	2	14,14,15	1.06	1 (7%)	15,19,21	0.59	0
3	NAG	C	242	1,3	14,14,15	0.66	0	15,19,21	0.98	1 (6%)
3	NAG	C	243	3	14,14,15	0.63	0	15,19,21	1.19	2 (13%)
3	BMA	C	244	3	11,11,12	0.58	0	13,15,17	1.02	1 (7%)
2	NAG	C	366	1,2	14,14,15	0.50	0	15,19,21	0.81	0
2	NAG	C	367	2	14,14,15	0.59	0	15,19,21	0.86	1 (6%)
2	NAG	D	221	1,2	14,14,15	0.84	0	15,19,21	0.81	0
2	NAG	D	222	2	14,14,15	0.98	1 (7%)	15,19,21	0.63	0
3	NAG	D	242	1,3	14,14,15	0.55	0	15,19,21	0.97	1 (6%)
3	NAG	D	243	3	14,14,15	0.63	0	15,19,21	1.22	2 (13%)
3	BMA	D	244	3	11,11,12	0.67	0	13,15,17	1.07	1 (7%)
2	NAG	D	366	1,2	14,14,15	0.53	0	15,19,21	0.73	0
2	NAG	D	367	2	14,14,15	0.57	0	15,19,21	0.87	1 (6%)
2	NAG	E	221	1,2	14,14,15	0.79	0	15,19,21	0.85	1 (6%)
2	NAG	E	222	2	14,14,15	0.91	1 (7%)	15,19,21	0.59	0
3	NAG	E	242	1,3	14,14,15	0.61	0	15,19,21	0.96	1 (6%)
3	NAG	E	243	3	14,14,15	0.65	0	15,19,21	1.28	2 (13%)
3	BMA	E	244	3	11,11,12	0.65	0	13,15,17	1.03	1 (7%)
2	NAG	E	366	1,2	14,14,15	0.56	0	15,19,21	0.71	0
2	NAG	E	367	2	14,14,15	0.57	0	15,19,21	0.84	1 (6%)

In the following table, the Chirals column lists the number of chiral outliers, the number of chiral centers analysed, the number of these observed in the model and the number defined in the chemical component dictionary. Similar counts are reported in the Torsion and Rings columns. '-' means no outliers of that kind were identified.

Mol	Type	Chain	Res	Link	Chirals	Torsions	Rings
2	NAG	A	221	1,2	-	0/6/23/26	0/1/1/1
2	NAG	A	222	2	-	0/6/23/26	0/1/1/1
3	NAG	A	242	1,3	-	0/6/23/26	0/1/1/1
3	NAG	A	243	3	-	0/6/23/26	0/1/1/1
3	BMA	A	244	3	-	0/2/19/22	0/1/1/1
2	NAG	A	366	1,2	-	0/6/23/26	0/1/1/1
2	NAG	A	367	2	-	0/6/23/26	0/1/1/1
2	NAG	B	221	1,2	-	0/6/23/26	0/1/1/1

Continued on next page...

Continued from previous page...

Mol	Type	Chain	Res	Link	Chirals	Torsions	Rings
2	NAG	B	222	2	-	0/6/23/26	0/1/1/1
3	NAG	B	242	1,3	-	0/6/23/26	0/1/1/1
3	NAG	B	243	3	-	0/6/23/26	0/1/1/1
3	BMA	B	244	3	-	0/2/19/22	0/1/1/1
2	NAG	B	366	1,2	-	0/6/23/26	0/1/1/1
2	NAG	B	367	2	-	0/6/23/26	0/1/1/1
2	NAG	C	221	1,2	-	0/6/23/26	0/1/1/1
2	NAG	C	222	2	-	0/6/23/26	0/1/1/1
3	NAG	C	242	1,3	-	0/6/23/26	0/1/1/1
3	NAG	C	243	3	-	0/6/23/26	0/1/1/1
3	BMA	C	244	3	-	0/2/19/22	0/1/1/1
2	NAG	C	366	1,2	-	0/6/23/26	0/1/1/1
2	NAG	C	367	2	-	0/6/23/26	0/1/1/1
2	NAG	D	221	1,2	-	0/6/23/26	0/1/1/1
2	NAG	D	222	2	-	0/6/23/26	0/1/1/1
3	NAG	D	242	1,3	-	0/6/23/26	0/1/1/1
3	NAG	D	243	3	-	0/6/23/26	0/1/1/1
3	BMA	D	244	3	-	0/2/19/22	0/1/1/1
2	NAG	D	366	1,2	-	0/6/23/26	0/1/1/1
2	NAG	D	367	2	-	0/6/23/26	0/1/1/1
2	NAG	E	221	1,2	-	0/6/23/26	0/1/1/1
2	NAG	E	222	2	-	0/6/23/26	0/1/1/1
3	NAG	E	242	1,3	-	0/6/23/26	0/1/1/1
3	NAG	E	243	3	-	0/6/23/26	0/1/1/1
3	BMA	E	244	3	-	0/2/19/22	0/1/1/1
2	NAG	E	366	1,2	-	0/6/23/26	0/1/1/1
2	NAG	E	367	2	-	0/6/23/26	0/1/1/1

All (5) bond length outliers are listed below:

Mol	Chain	Res	Type	Atoms	Z	Observed(Å)	Ideal(Å)
2	E	222	NAG	C1-C2	2.95	1.56	1.52
2	D	222	NAG	C1-C2	3.15	1.56	1.52
2	A	222	NAG	C1-C2	3.15	1.56	1.52
2	B	222	NAG	C1-C2	3.24	1.56	1.52
2	C	222	NAG	C1-C2	3.37	1.57	1.52

All (29) bond angle outliers are listed below:

Mol	Chain	Res	Type	Atoms	Z	Observed(°)	Ideal(°)
3	E	243	NAG	C2-N2-C7	-3.06	118.48	122.94
3	A	243	NAG	C2-N2-C7	-2.87	118.76	122.94

Continued on next page...

Continued from previous page...

Mol	Chain	Res	Type	Atoms	Z	Observed(°)	Ideal(°)
3	C	243	NAG	C2-N2-C7	-2.83	118.82	122.94
3	D	243	NAG	C2-N2-C7	-2.71	118.98	122.94
3	E	243	NAG	C3-C4-C5	-2.63	105.58	110.22
3	E	242	NAG	C2-N2-C7	-2.61	119.13	122.94
3	B	243	NAG	C2-N2-C7	-2.56	119.20	122.94
3	C	242	NAG	C2-N2-C7	-2.53	119.26	122.94
3	A	242	NAG	C2-N2-C7	-2.47	119.34	122.94
3	B	243	NAG	C3-C4-C5	-2.40	105.98	110.22
3	D	243	NAG	C3-C4-C5	-2.37	106.04	110.22
3	A	243	NAG	C3-C4-C5	-2.37	106.05	110.22
2	A	367	NAG	C2-N2-C7	-2.33	119.55	122.94
3	B	242	NAG	C2-N2-C7	-2.30	119.58	122.94
2	E	221	NAG	C2-N2-C7	-2.25	119.67	122.94
3	D	242	NAG	C2-N2-C7	-2.24	119.68	122.94
2	B	221	NAG	C2-N2-C7	-2.23	119.68	122.94
2	C	221	NAG	C2-N2-C7	-2.22	119.71	122.94
3	C	243	NAG	C3-C4-C5	-2.14	106.44	110.22
2	B	367	NAG	C2-N2-C7	-2.12	119.85	122.94
2	A	221	NAG	C2-N2-C7	-2.11	119.87	122.94
2	D	367	NAG	C2-N2-C7	-2.07	119.93	122.94
2	C	367	NAG	C2-N2-C7	-2.04	119.97	122.94
2	E	367	NAG	C2-N2-C7	-2.00	120.02	122.94
3	C	244	BMA	C1-C2-C3	2.63	112.98	109.65
3	E	244	BMA	C1-C2-C3	2.63	112.99	109.65
3	A	244	BMA	C1-C2-C3	2.68	113.05	109.65
3	D	244	BMA	C1-C2-C3	2.68	113.05	109.65
3	B	244	BMA	C1-C2-C3	2.70	113.07	109.65

There are no chirality outliers.

There are no torsion outliers.

There are no ring outliers.

15 monomers are involved in 23 short contacts:

Mol	Chain	Res	Type	Clashes	Symm-Clashes
2	A	221	NAG	3	0
2	A	222	NAG	3	0
3	A	242	NAG	2	0
2	B	221	NAG	2	0
2	B	222	NAG	2	0
3	B	242	NAG	2	0
2	C	221	NAG	2	0

Continued on next page...

Continued from previous page...

Mol	Chain	Res	Type	Clashes	Symm-Clashes
2	C	222	NAG	2	0
3	C	242	NAG	2	0
2	D	221	NAG	3	0
2	D	222	NAG	3	0
3	D	242	NAG	2	0
2	E	221	NAG	3	0
2	E	222	NAG	3	0
3	E	242	NAG	2	0

5.6 Ligand geometry

20 ligands are modelled in this entry.

In the following table, the Counts columns list the number of bonds (or angles) for which Mogul statistics could be retrieved, the number of bonds (or angles) that are observed in the model and the number of bonds (or angles) that are defined in the chemical component dictionary. The Link column lists molecule types, if any, to which the group is linked. The Z score for a bond length (or angle) is the number of standard deviations the observed value is removed from the expected value. A bond length (or angle) with $|Z| > 2$ is considered an outlier worth inspection. RMSZ is the root-mean-square of all Z scores of the bond lengths (or angles).

Mol	Type	Chain	Res	Link	Bond lengths			Bond angles		
					Counts	RMSZ	$\# Z > 2$	Counts	RMSZ	$\# Z > 2$
4	NAG	A	250	1	14,14,15	1.03	1 (7%)	15,19,21	0.82	1 (6%)
4	NAG	A	274	1	14,14,15	0.76	0	15,19,21	0.68	0
4	NAG	A	335	1	14,14,15	1.07	2 (14%)	15,19,21	0.78	0
4	NAG	A	340	1	14,14,15	0.64	0	15,19,21	0.82	0
4	NAG	B	250	1	14,14,15	1.00	1 (7%)	15,19,21	0.79	0
4	NAG	B	274	1	14,14,15	0.66	0	15,19,21	0.74	0
4	NAG	B	335	1	14,14,15	1.10	2 (14%)	15,19,21	0.77	0
4	NAG	B	340	1	14,14,15	0.77	0	15,19,21	0.74	0
4	NAG	C	250	1	14,14,15	1.04	1 (7%)	15,19,21	0.84	0
4	NAG	C	274	1	14,14,15	0.82	1 (7%)	15,19,21	0.68	0
4	NAG	C	335	1	14,14,15	1.01	1 (7%)	15,19,21	0.77	0
4	NAG	C	340	1	14,14,15	0.77	0	15,19,21	0.76	0
4	NAG	D	250	1	14,14,15	1.06	1 (7%)	15,19,21	0.85	1 (6%)
4	NAG	D	274	1	14,14,15	0.71	0	15,19,21	0.70	0
4	NAG	D	335	1	14,14,15	1.08	1 (7%)	15,19,21	0.77	0
4	NAG	D	340	1	14,14,15	0.69	0	15,19,21	0.80	0
4	NAG	E	250	1	14,14,15	1.03	1 (7%)	15,19,21	0.86	0
4	NAG	E	274	1	14,14,15	0.73	0	15,19,21	0.68	0

Mol	Type	Chain	Res	Link	Bond lengths			Bond angles		
					Counts	RMSZ	# Z > 2	Counts	RMSZ	# Z > 2
4	NAG	E	335	1	14,14,15	1.12	2 (14%)	15,19,21	0.75	0
4	NAG	E	340	1	14,14,15	0.77	0	15,19,21	0.77	0

In the following table, the Chirals column lists the number of chiral outliers, the number of chiral centers analysed, the number of these observed in the model and the number defined in the chemical component dictionary. Similar counts are reported in the Torsion and Rings columns. '-' means no outliers of that kind were identified.

Mol	Type	Chain	Res	Link	Chirals	Torsions	Rings
4	NAG	A	250	1	-	0/6/23/26	0/1/1/1
4	NAG	A	274	1	-	0/6/23/26	0/1/1/1
4	NAG	A	335	1	-	0/6/23/26	0/1/1/1
4	NAG	A	340	1	-	0/6/23/26	0/1/1/1
4	NAG	B	250	1	-	0/6/23/26	0/1/1/1
4	NAG	B	274	1	-	0/6/23/26	0/1/1/1
4	NAG	B	335	1	-	0/6/23/26	0/1/1/1
4	NAG	B	340	1	-	0/6/23/26	0/1/1/1
4	NAG	C	250	1	-	0/6/23/26	0/1/1/1
4	NAG	C	274	1	-	0/6/23/26	0/1/1/1
4	NAG	C	335	1	-	0/6/23/26	0/1/1/1
4	NAG	C	340	1	-	0/6/23/26	0/1/1/1
4	NAG	D	250	1	-	0/6/23/26	0/1/1/1
4	NAG	D	274	1	-	0/6/23/26	0/1/1/1
4	NAG	D	335	1	-	0/6/23/26	0/1/1/1
4	NAG	D	340	1	-	0/6/23/26	0/1/1/1
4	NAG	E	250	1	-	0/6/23/26	0/1/1/1
4	NAG	E	274	1	-	0/6/23/26	0/1/1/1
4	NAG	E	335	1	-	0/6/23/26	0/1/1/1
4	NAG	E	340	1	-	0/6/23/26	0/1/1/1

All (14) bond length outliers are listed below:

Mol	Chain	Res	Type	Atoms	Z	Observed(Å)	Ideal(Å)
4	A	335	NAG	C3-C2	2.00	1.56	1.52
4	B	335	NAG	C3-C2	2.01	1.56	1.52
4	C	274	NAG	C1-C2	2.08	1.55	1.52
4	E	335	NAG	C3-C2	2.16	1.57	1.52
4	B	250	NAG	C1-C2	2.66	1.56	1.52
4	A	250	NAG	C1-C2	2.73	1.56	1.52
4	C	335	NAG	C1-C2	2.78	1.56	1.52
4	E	250	NAG	C1-C2	2.81	1.56	1.52
4	D	250	NAG	C1-C2	2.85	1.56	1.52

Continued on next page...

Continued from previous page...

Mol	Chain	Res	Type	Atoms	Z	Observed(Å)	Ideal(Å)
4	C	250	NAG	C1-C2	2.90	1.56	1.52
4	A	335	NAG	C1-C2	3.06	1.56	1.52
4	E	335	NAG	C1-C2	3.10	1.56	1.52
4	B	335	NAG	C1-C2	3.14	1.56	1.52
4	D	335	NAG	C1-C2	3.14	1.56	1.52

All (2) bond angle outliers are listed below:

Mol	Chain	Res	Type	Atoms	Z	Observed(°)	Ideal(°)
4	D	250	NAG	C2-N2-C7	-2.15	119.81	122.94
4	A	250	NAG	C2-N2-C7	-2.02	120.00	122.94

There are no chirality outliers.

There are no torsion outliers.

There are no ring outliers.

3 monomers are involved in 3 short contacts:

Mol	Chain	Res	Type	Clashes	Symm-Clashes
4	A	250	NAG	1	0
4	B	250	NAG	1	0
4	E	250	NAG	1	0

5.7 Other polymers [i](#)

There are no such residues in this entry.

5.8 Polymer linkage issues [i](#)

There are no chain breaks in this entry.

6 Fit of model and data

6.1 Protein, DNA and RNA chains

EDS was not executed - this section is therefore empty.

6.2 Non-standard residues in protein, DNA, RNA chains

EDS was not executed - this section is therefore empty.

6.3 Carbohydrates

EDS was not executed - this section is therefore empty.

6.4 Ligands

EDS was not executed - this section is therefore empty.

6.5 Other polymers

EDS was not executed - this section is therefore empty.