



# wwPDB X-ray Structure Validation Summary Report ⓘ

Aug 1, 2017 – 11:45 PM EDT

PDB ID : 4JBZ  
Title : Structure of Mcm10 coiled-coil region  
Authors : Du, W.; Adhikary, S.; Eichman, B.F.  
Deposited on : unknown  
Resolution : 2.40 Å(reported)

This is a wwPDB X-ray Structure Validation Summary Report for a publicly released PDB entry.

We welcome your comments at [validation@mail.wwpdb.org](mailto:validation@mail.wwpdb.org)

A user guide is available at

<http://wwpdb.org/validation/2016/XrayValidationReportHelp>

with specific help available everywhere you see the ⓘ symbol.

---

The following versions of software and data (see [references ⓘ](#)) were used in the production of this report:

MolProbity : 4.02b-467  
Mogul : 1.7.2 (RC1), CSD as538be (2017)  
Xtriage (Phenix) : 1.9-1692  
EDS : rb-20029824  
Percentile statistics : 20161228.v01 (using entries in the PDB archive December 28th 2016)  
Refmac : 5.8.0135  
CCP4 : 6.5.0  
Ideal geometry (proteins) : Engh & Huber (2001)  
Ideal geometry (DNA, RNA) : Parkinson et al. (1996)  
Validation Pipeline (wwPDB-VP) : rb-20029824

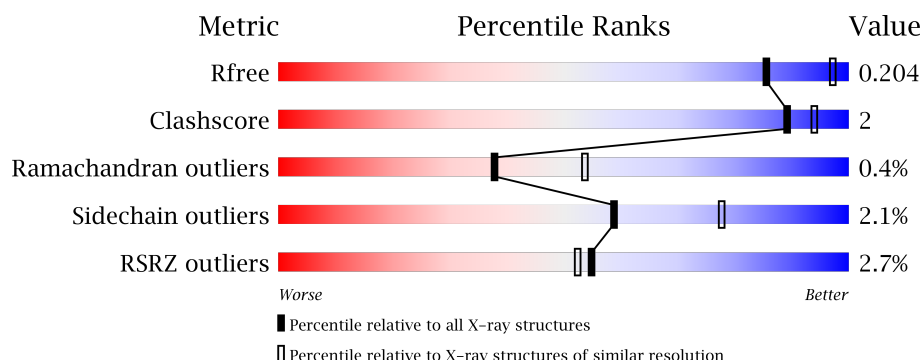
# 1 Overall quality at a glance

The following experimental techniques were used to determine the structure:

## *X-RAY DIFFRACTION*

The reported resolution of this entry is 2.40 Å.

Percentile scores (ranging between 0-100) for global validation metrics of the entry are shown in the following graphic. The table shows the number of entries on which the scores are based.



Metric	Whole archive (#Entries)	Similar resolution (#Entries, resolution range(Å))
$R_{free}$	100719	3166 (2.40-2.40)
Clashscore	112137	3674 (2.40-2.40)
Ramachandran outliers	110173	3616 (2.40-2.40)
Sidechain outliers	110143	3617 (2.40-2.40)
RSRZ outliers	101464	3195 (2.40-2.40)

The table below summarises the geometric issues observed across the polymeric chains and their fit to the electron density. The red, orange, yellow and green segments on the lower bar indicate the fraction of residues that contain outliers for  $\geq 3$ , 2, 1 and 0 types of geometric quality criteria. A grey segment represents the fraction of residues that are not modelled. The numeric value for each fraction is indicated below the corresponding segment, with a dot representing fractions  $\leq 5\%$ . The upper red bar (where present) indicates the fraction of residues that have poor fit to the electron density. The numeric value is given above the bar.

Mol	Chain	Length	Quality of chain
1	A	403	<div> <div>0.1%</div> <div>94%</div> <div>6%</div> <div>0.1%</div> </div>
1	B	403	<div> <div>4%</div> <div>93%</div> <div>6%</div> <div>0.1%</div> </div>
1	C	403	<div> <div>3%</div> <div>93%</div> <div>6%</div> <div>0.1%</div> </div>

## 2 Entry composition [i](#)

There are 3 unique types of molecules in this entry. The entry contains 9380 atoms, of which 0 are hydrogens and 0 are deuteriums.

In the tables below, the ZeroOcc column contains the number of atoms modelled with zero occupancy, the AltConf column contains the number of residues with at least one atom in alternate conformation and the Trace column contains the number of residues modelled with at most 2 atoms.

- Molecule 1 is a protein called MALTOSE-BINDING PERIPLASMIC PROTEIN FUSED WITH XENOPUS LAEVIS MCM10 COILED-COIL REGION.

Mol	Chain	Residues	Atoms					ZeroOcc	AltConf	Trace
1	A	401	Total	C	N	O	S	0	0	0
			2998	1937	483	570	8			
1	B	400	Total	C	N	O	S	0	0	0
			2919	1878	473	560	8			
1	C	400	Total	C	N	O	S	0	0	0
			2948	1901	470	569	8			

There are 42 discrepancies between the modelled and reference sequences:

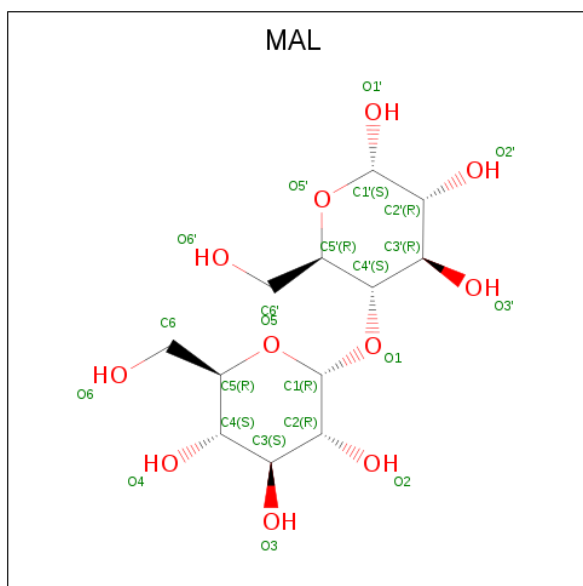
Chain	Residue	Modelled	Actual	Comment	Reference
A	0	MET	-	INITIATING METHIONINE	UNP P0AEX9
A	82	ALA	ASP	ENGINEERED MUTATION	UNP P0AEX9
A	83	ALA	LYS	ENGINEERED MUTATION	UNP P0AEX9
A	172	ALA	GLU	ENGINEERED MUTATION	UNP P0AEX9
A	173	ALA	ASN	ENGINEERED MUTATION	UNP P0AEX9
A	239	ALA	LYS	ENGINEERED MUTATION	UNP P0AEX9
A	362	ALA	LYS	ENGINEERED MUTATION	UNP P0AEX9
A	363	ALA	ASP	ENGINEERED MUTATION	UNP P0AEX9
A	367	ASN	-	LINKER	UNP P0AEX9
A	368	ALA	-	LINKER	UNP P0AEX9
A	369	ALA	-	LINKER	UNP P0AEX9
A	370	ALA	-	LINKER	UNP P0AEX9
A	371	MET	-	LINKER	UNP P0AEX9
A	372	GLY	-	LINKER	UNP P0AEX9
B	0	MET	-	INITIATING METHIONINE	UNP P0AEX9
B	82	ALA	ASP	ENGINEERED MUTATION	UNP P0AEX9
B	83	ALA	LYS	ENGINEERED MUTATION	UNP P0AEX9
B	172	ALA	GLU	ENGINEERED MUTATION	UNP P0AEX9
B	173	ALA	ASN	ENGINEERED MUTATION	UNP P0AEX9
B	239	ALA	LYS	ENGINEERED MUTATION	UNP P0AEX9
B	362	ALA	LYS	ENGINEERED MUTATION	UNP P0AEX9
B	363	ALA	ASP	ENGINEERED MUTATION	UNP P0AEX9

*Continued on next page...*

Continued from previous page...

Chain	Residue	Modelled	Actual	Comment	Reference
B	367	ASN	-	LINKER	UNP P0AEX9
B	368	ALA	-	LINKER	UNP P0AEX9
B	369	ALA	-	LINKER	UNP P0AEX9
B	370	ALA	-	LINKER	UNP P0AEX9
B	371	MET	-	LINKER	UNP P0AEX9
B	372	GLY	-	LINKER	UNP P0AEX9
C	0	MET	-	INITIATING METHIONINE	UNP P0AEX9
C	82	ALA	ASP	ENGINEERED MUTATION	UNP P0AEX9
C	83	ALA	LYS	ENGINEERED MUTATION	UNP P0AEX9
C	172	ALA	GLU	ENGINEERED MUTATION	UNP P0AEX9
C	173	ALA	ASN	ENGINEERED MUTATION	UNP P0AEX9
C	239	ALA	LYS	ENGINEERED MUTATION	UNP P0AEX9
C	362	ALA	LYS	ENGINEERED MUTATION	UNP P0AEX9
C	363	ALA	ASP	ENGINEERED MUTATION	UNP P0AEX9
C	367	ASN	-	LINKER	UNP P0AEX9
C	368	ALA	-	LINKER	UNP P0AEX9
C	369	ALA	-	LINKER	UNP P0AEX9
C	370	ALA	-	LINKER	UNP P0AEX9
C	371	MET	-	LINKER	UNP P0AEX9
C	372	GLY	-	LINKER	UNP P0AEX9

- Molecule 2 is MALTOSE (three-letter code: MAL) (formula: C<sub>12</sub>H<sub>22</sub>O<sub>11</sub>).



Mol	Chain	Residues	Atoms			ZeroOcc	AltConf
2	A	1	Total	C	O	0	0
			23	12	11		

Continued on next page...

*Continued from previous page...*

Mol	Chain	Residues	Atoms			ZeroOcc	AltConf
2	B	1	Total	C	O	0	0
			23	12	11		
2	C	1	Total	C	O	0	0
			23	12	11		

- Molecule 3 is water.

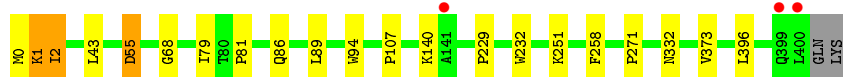
Mol	Chain	Residues	Atoms		ZeroOcc	AltConf
3	A	264	Total	O	0	0
			264	264		
3	B	114	Total	O	0	0
			114	114		
3	C	68	Total	O	0	0
			68	68		

### 3 Residue-property plots [i](#)

These plots are drawn for all protein, RNA and DNA chains in the entry. The first graphic for a chain summarises the proportions of the various outlier classes displayed in the second graphic. The second graphic shows the sequence view annotated by issues in geometry and electron density. Residues are color-coded according to the number of geometric quality criteria for which they contain at least one outlier: green = 0, yellow = 1, orange = 2 and red = 3 or more. A red dot above a residue indicates a poor fit to the electron density ( $RSRZ > 2$ ). Stretches of 2 or more consecutive residues without any outlier are shown as a green connector. Residues present in the sample, but not in the model, are shown in grey.

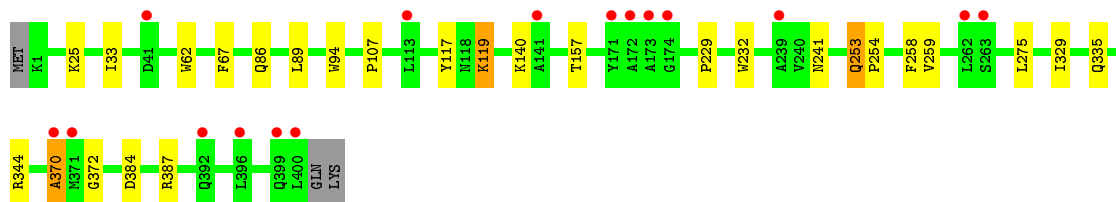
- Molecule 1: MALTOSE-BINDING PERIPLASMIC PROTEIN FUSED WITH XENOPUS LAE-VIS MCM10 COILED-COIL REGION

Chain A: 

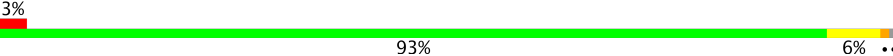


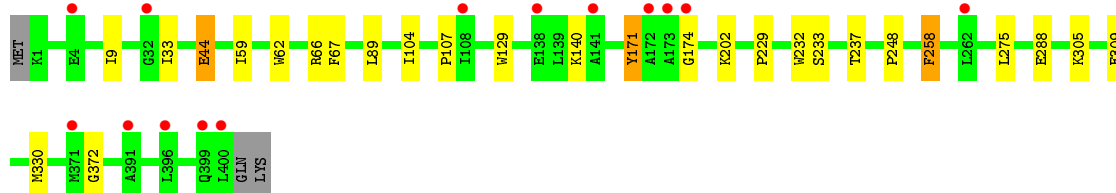
- Molecule 1: MALTOSE-BINDING PERIPLASMIC PROTEIN FUSED WITH XENOPUS LAE-VIS MCM10 COILED-COIL REGION

Chain B: 



- Molecule 1: MALTOSE-BINDING PERIPLASMIC PROTEIN FUSED WITH XENOPUS LAE-VIS MCM10 COILED-COIL REGION

Chain C: 



## 4 Data and refinement statistics

Property	Value	Source
Space group	C 1 2 1	Depositor
Cell constants a, b, c, $\alpha$ , $\beta$ , $\gamma$	187.38Å 116.62Å 73.39Å 90.00° 103.48° 90.00°	Depositor
Resolution (Å)	29.15 – 2.40 29.15 – 2.39	Depositor EDS
% Data completeness (in resolution range)	98.0 (29.15-2.40) 98.4 (29.15-2.39)	Depositor EDS
$R_{merge}$	(Not available)	Depositor
$R_{sym}$	0.07	Depositor
$\langle I/\sigma(I) \rangle$ <sup>1</sup>	4.21 (at 2.39Å)	Xtriage
Refinement program	PHENIX (phenix.refine: 1.8.1_1168)	Depositor
R, $R_{free}$	0.164 , 0.205 0.161 , 0.204	Depositor DCC
$R_{free}$ test set	2966 reflections (5.02%)	DCC
Wilson B-factor (Å <sup>2</sup> )	36.7	Xtriage
Anisotropy	0.348	Xtriage
Bulk solvent $k_{sol}$ (e/Å <sup>3</sup> ), $B_{sol}$ (Å <sup>2</sup> )	0.31 , 55.3	EDS
L-test for twinning <sup>2</sup>	$\langle  L  \rangle = 0.49$ , $\langle L^2 \rangle = 0.33$	Xtriage
Estimated twinning fraction	No twinning to report.	Xtriage
$F_o, F_c$ correlation	0.96	EDS
Total number of atoms	9380	wwPDB-VP
Average B, all atoms (Å <sup>2</sup> )	46.0	wwPDB-VP

Xtriage's analysis on translational NCS is as follows: *The largest off-origin peak in the Patterson function is 3.85% of the height of the origin peak. No significant pseudotranslation is detected.*

<sup>1</sup>Intensities estimated from amplitudes.

<sup>2</sup>Theoretical values of  $\langle |L| \rangle$ ,  $\langle L^2 \rangle$  for acentric reflections are 0.5, 0.333 respectively for untwinned datasets, and 0.375, 0.2 for perfectly twinned datasets.

## 5 Model quality [i](#)

### 5.1 Standard geometry [i](#)

Bond lengths and bond angles in the following residue types are not validated in this section: MAL

The Z score for a bond length (or angle) is the number of standard deviations the observed value is removed from the expected value. A bond length (or angle) with  $|Z| > 5$  is considered an outlier worth inspection. RMSZ is the root-mean-square of all Z scores of the bond lengths (or angles).

Mol	Chain	Bond lengths		Bond angles	
		RMSZ	# Z  >5	RMSZ	# Z  >5
1	A	0.46	0/3067	0.58	0/4175
1	B	0.36	0/2988	0.52	0/4089
1	C	0.35	0/3017	0.51	0/4121
All	All	0.39	0/9072	0.54	0/12385

There are no bond length outliers.

There are no bond angle outliers.

There are no chirality outliers.

There are no planarity outliers.

### 5.2 Too-close contacts [i](#)

In the following table, the Non-H and H(model) columns list the number of non-hydrogen atoms and hydrogen atoms in the chain respectively. The H(added) column lists the number of hydrogen atoms added and optimized by MolProbity. The Clashes column lists the number of clashes within the asymmetric unit, whereas Symm-Clashes lists symmetry related clashes.

Mol	Chain	Non-H	H(model)	H(added)	Clashes	Symm-Clashes
1	A	2998	0	2876	8	0
1	B	2919	0	2709	14	0
1	C	2948	0	2776	16	0
2	A	23	0	22	0	0
2	B	23	0	22	0	0
2	C	23	0	22	0	0
3	A	264	0	0	0	0
3	B	114	0	0	1	0
3	C	68	0	0	1	0
All	All	9380	0	8427	38	0



The all-atom clashscore is defined as the number of clashes found per 1000 atoms (including hydrogen atoms). The all-atom clashscore for this structure is 2.

The worst 5 of 38 close contacts within the same asymmetric unit are listed below, sorted by their clash magnitude.

Atom-1	Atom-2	Interatomic distance (Å)	Clash overlap (Å)
1:B:344:ARG:NE	3:B:1037:HOH:O	2.19	0.75
1:C:140:LYS:NZ	1:C:202:LYS:O	2.23	0.72
1:A:79:ILE:HG22	1:A:81:PRO:HD3	1.74	0.68
1:C:89:LEU:HD23	1:C:107:PRO:HG2	1.76	0.67
1:B:89:LEU:HD23	1:B:107:PRO:HG2	1.78	0.66

There are no symmetry-related clashes.

## 5.3 Torsion angles [i](#)

### 5.3.1 Protein backbone [i](#)

In the following table, the Percentiles column shows the percent Ramachandran outliers of the chain as a percentile score with respect to all X-ray entries followed by that with respect to entries of similar resolution.

The Analysed column shows the number of residues for which the backbone conformation was analysed, and the total number of residues.

Mol	Chain	Analysed	Favoured	Allowed	Outliers	Percentiles	
1	A	399/403 (99%)	387 (97%)	10 (2%)	2 (0%)	32	46
1	B	398/403 (99%)	389 (98%)	7 (2%)	2 (0%)	32	46
1	C	398/403 (99%)	388 (98%)	9 (2%)	1 (0%)	44	60
All	All	1195/1209 (99%)	1164 (97%)	26 (2%)	5 (0%)	38	54

All (5) Ramachandran outliers are listed below:

Mol	Chain	Res	Type
1	A	373	VAL
1	B	370	ALA
1	A	2	ILE
1	B	372	GLY
1	C	372	GLY

### 5.3.2 Protein sidechains ⓘ

In the following table, the Percentiles column shows the percent sidechain outliers of the chain as a percentile score with respect to all X-ray entries followed by that with respect to entries of similar resolution.

The Analysed column shows the number of residues for which the sidechain conformation was analysed, and the total number of residues.

Mol	Chain	Analysed	Rotameric	Outliers	Percentiles	
1	A	280/317 (88%)	273 (98%)	7 (2%)	53	73
1	B	264/317 (83%)	258 (98%)	6 (2%)	56	75
1	C	273/317 (86%)	269 (98%)	4 (2%)	70	85
All	All	817/951 (86%)	800 (98%)	17 (2%)	59	78

5 of 17 residues with a non-rotameric sidechain are listed below:

Mol	Chain	Res	Type
1	B	25	LYS
1	B	119	LYS
1	C	44	GLU
1	A	396	LEU
1	C	171	TYR

Some sidechains can be flipped to improve hydrogen bonding and reduce clashes. All (1) such sidechains are listed below:

Mol	Chain	Res	Type
1	C	390	GLN

### 5.3.3 RNA ⓘ

There are no RNA molecules in this entry.

## 5.4 Non-standard residues in protein, DNA, RNA chains ⓘ

There are no non-standard protein/DNA/RNA residues in this entry.

## 5.5 Carbohydrates ⓘ

There are no carbohydrates in this entry.

## 5.6 Ligand geometry [i](#)

3 ligands are modelled in this entry.

In the following table, the Counts columns list the number of bonds (or angles) for which Mogul statistics could be retrieved, the number of bonds (or angles) that are observed in the model and the number of bonds (or angles) that are defined in the chemical component dictionary. The Link column lists molecule types, if any, to which the group is linked. The Z score for a bond length (or angle) is the number of standard deviations the observed value is removed from the expected value. A bond length (or angle) with  $|Z| > 2$  is considered an outlier worth inspection. RMSZ is the root-mean-square of all Z scores of the bond lengths (or angles).

Mol	Type	Chain	Res	Link	Bond lengths			Bond angles		
					Counts	RMSZ	$\# Z  > 2$	Counts	RMSZ	$\# Z  > 2$
2	MAL	A	501	-	24,24,24	0.46	0	35,35,35	0.92	0
2	MAL	B	901	-	24,24,24	0.68	0	35,35,35	0.84	0
2	MAL	C	501	-	24,24,24	0.47	0	35,35,35	0.80	0

In the following table, the Chirals column lists the number of chiral outliers, the number of chiral centers analysed, the number of these observed in the model and the number defined in the chemical component dictionary. Similar counts are reported in the Torsion and Rings columns. '-' means no outliers of that kind were identified.

Mol	Type	Chain	Res	Link	Chirals	Torsions	Rings
2	MAL	A	501	-	-	0/8/48/48	0/2/2/2
2	MAL	B	901	-	-	0/8/48/48	0/2/2/2
2	MAL	C	501	-	-	0/8/48/48	0/2/2/2

There are no bond length outliers.

There are no bond angle outliers.

There are no chirality outliers.

There are no torsion outliers.

There are no ring outliers.

No monomer is involved in short contacts.

## 5.7 Other polymers [i](#)

There are no such residues in this entry.

## 5.8 Polymer linkage issues [i](#)

There are no chain breaks in this entry.

## 6 Fit of model and data [i](#)

### 6.1 Protein, DNA and RNA chains [i](#)

In the following table, the column labelled ‘#RSRZ> 2’ contains the number (and percentage) of RSRZ outliers, followed by percent RSRZ outliers for the chain as percentile scores relative to all X-ray entries and entries of similar resolution. The OWAB column contains the minimum, median, 95<sup>th</sup> percentile and maximum values of the occupancy-weighted average B-factor per residue. The column labelled ‘Q< 0.9’ lists the number of (and percentage) of residues with an average occupancy less than 0.9.

Mol	Chain	Analysed	<RSRZ>	#RSRZ>2	OWAB(Å <sup>2</sup> )	Q<0.9
1	A	401/403 (99%)	-0.45	3 (0%) 87 86	16, 31, 57, 96	4 (0%)
1	B	400/403 (99%)	-0.18	16 (4%) 39 38	26, 47, 76, 103	4 (1%)
1	C	400/403 (99%)	-0.03	14 (3%) 44 43	32, 55, 86, 114	1 (0%)
All	All	1201/1209 (99%)	-0.22	33 (2%) 55 52	16, 45, 79, 114	9 (0%)

The worst 5 of 33 RSRZ outliers are listed below:

Mol	Chain	Res	Type	RSRZ
1	B	173	ALA	6.6
1	C	173	ALA	5.6
1	C	172	ALA	4.5
1	C	141	ALA	4.4
1	B	172	ALA	4.2

### 6.2 Non-standard residues in protein, DNA, RNA chains [i](#)

There are no non-standard protein/DNA/RNA residues in this entry.

### 6.3 Carbohydrates [i](#)

There are no carbohydrates in this entry.

### 6.4 Ligands [i](#)

In the following table, the Atoms column lists the number of modelled atoms in the group and the number defined in the chemical component dictionary. LLDF column lists the quality of electron density of the group with respect to its neighbouring residues in protein, DNA or RNA chains. The B-factors column lists the minimum, median, 95<sup>th</sup> percentile and maximum values of B factors

of atoms in the group. The column labelled 'Q< 0.9' lists the number of atoms with occupancy less than 0.9.

Mol	Type	Chain	Res	Atoms	RSCC	RSR	LLDF	B-factors( $\text{\AA}^2$ )	Q<0.9
2	MAL	B	901	23/23	0.98	0.21	1.04	29,33,42,46	0
2	MAL	C	501	23/23	0.98	0.17	0.74	29,36,45,47	0
2	MAL	A	501	23/23	0.98	0.15	0.18	13,23,31,35	0

## 6.5 Other polymers [i](#)

There are no such residues in this entry.