



# Full wwPDB X-ray Structure Validation Report ⓘ

Feb 14, 2017 – 03:43 am GMT

PDB ID : 1JCS  
Title : CRYSTAL STRUCTURE OF RAT PROTEIN FARNESYLTRANSFERASE  
COMPLEXED WITH THE PEPTIDE SUBSTRATE TKCVFM AND AN  
ANALOG OF FARNESYL DIPHOSPHATE  
Authors : Long, S.B.; Casey, P.J.; Beese, L.S.  
Deposited on : 2001-06-11  
Resolution : 2.20 Å(reported)

This is a Full wwPDB X-ray Structure Validation Report for a publicly released PDB entry.

We welcome your comments at [validation@mail.wwpdb.org](mailto:validation@mail.wwpdb.org)

A user guide is available at

<http://wwpdb.org/validation/2016/XrayValidationReportHelp>

with specific help available everywhere you see the ⓘ symbol.

---

The following versions of software and data (see [references ⓘ](#)) were used in the production of this report:

MolProbity : 4.02b-467  
Mogul : 1.7.2 (RC1), CSD as538be (2017)  
Xtriage (Phenix) : 1.9-1692  
EDS : trunk28620  
Percentile statistics : 20161228.v01 (using entries in the PDB archive December 28th 2016)  
Refmac : 5.8.0135  
CCP4 : 6.5.0  
Ideal geometry (proteins) : Engh & Huber (2001)  
Ideal geometry (DNA, RNA) : Parkinson et al. (1996)  
Validation Pipeline (wwPDB-VP) : recalc28949

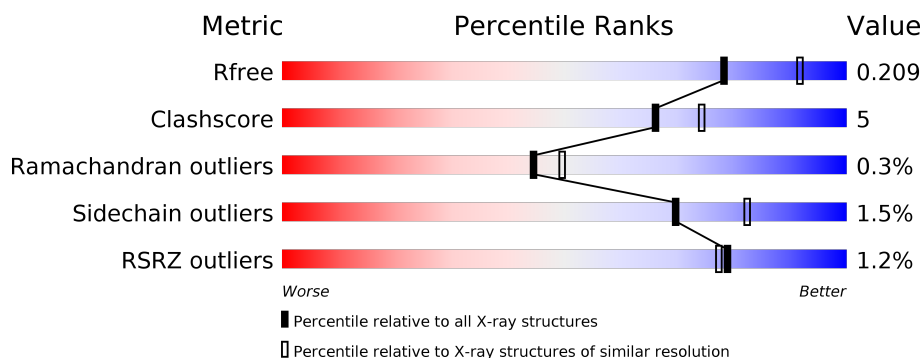
# 1 Overall quality at a glance

The following experimental techniques were used to determine the structure:

## *X-RAY DIFFRACTION*

The reported resolution of this entry is 2.20 Å.

Percentile scores (ranging between 0-100) for global validation metrics of the entry are shown in the following graphic. The table shows the number of entries on which the scores are based.



Metric	Whole archive (#Entries)	Similar resolution (#Entries, resolution range(Å))
$R_{free}$	100719	4002 (2.20-2.20)
Clashscore	112137	4730 (2.20-2.20)
Ramachandran outliers	110173	4656 (2.20-2.20)
Sidechain outliers	110143	4657 (2.20-2.20)
RSRZ outliers	101464	4033 (2.20-2.20)

The table below summarises the geometric issues observed across the polymeric chains and their fit to the electron density. The red, orange, yellow and green segments on the lower bar indicate the fraction of residues that contain outliers for  $\geq 3$ , 2, 1 and 0 types of geometric quality criteria. A grey segment represents the fraction of residues that are not modelled. The numeric value for each fraction is indicated below the corresponding segment, with a dot representing fractions  $\leq 5\%$ . The upper red bar (where present) indicates the fraction of residues that have poor fit to the electron density. The numeric value is given above the bar.

Mol	Chain	Length	Quality of chain
1	A	377	<div> <div style="width: 100%; height: 10px; background: linear-gradient(to right, red 1%, orange 1%, yellow 11%, green 74%, grey 14%);"></div> <div style="display: flex; justify-content: space-between; width: 100%;"> <span>%</span> <span>74%</span> <span>11%</span> <span>•</span> <span>14%</span> </div> </div>
2	B	437	<div> <div style="width: 100%; height: 10px; background: linear-gradient(to right, red 1%, orange 1%, yellow 9%, green 83%, grey 7%);"></div> <div style="display: flex; justify-content: space-between; width: 100%;"> <span>%</span> <span>83%</span> <span>9%</span> <span>7%</span> </div> </div>
3	C	6	<div> <div style="width: 100%; height: 10px; background: linear-gradient(to right, red 17%, orange 1%, yellow 17%, green 83%, grey 0%);"></div> <div style="display: flex; justify-content: space-between; width: 100%;"> <span>17%</span> <span>83%</span> <span>17%</span> </div> </div>

The following table lists non-polymeric compounds, carbohydrate monomers and non-standard residues in protein, DNA, RNA chains that are outliers for geometric or electron-density-fit criteria:

Mol	Type	Chain	Res	Chirality	Geometry	Clashes	Electron density
6	ACY	B	3003	-	-	-	X

## 2 Entry composition

There are 7 unique types of molecules in this entry. The entry contains 6466 atoms, of which 0 are hydrogens and 0 are deuteriums.

In the tables below, the ZeroOcc column contains the number of atoms modelled with zero occupancy, the AltConf column contains the number of residues with at least one atom in alternate conformation and the Trace column contains the number of residues modelled with at most 2 atoms.

- Molecule 1 is a protein called PROTEIN FARNESYLTRANSFERASE, ALPHA SUBUNIT.

Mol	Chain	Residues	Atoms					ZeroOcc	AltConf	Trace
1	A	323	Total	C	N	O	S	0	0	0
			2745	1746	481	513	5			

- Molecule 2 is a protein called PROTEIN FARNESYLTRANSFERASE, BETA SUBUNIT.

Mol	Chain	Residues	Atoms					ZeroOcc	AltConf	Trace
2	B	407	Total	C	N	O	S	0	0	0
			3203	2050	550	580	23			

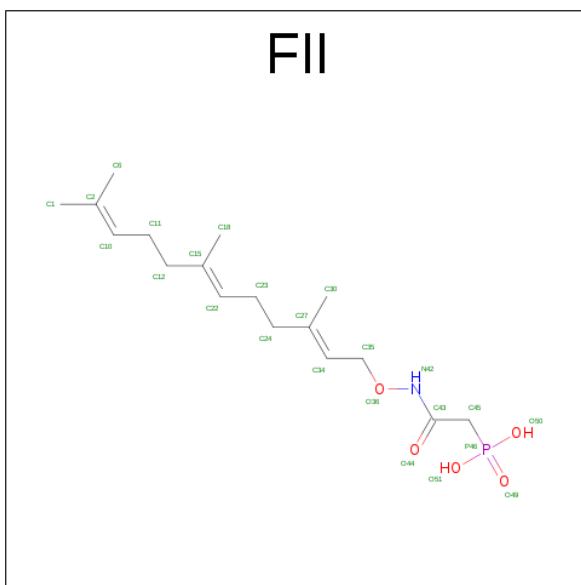
- Molecule 3 is a protein called SYNTHETIC HEXAPEPTIDE TKCVFM.

Mol	Chain	Residues	Atoms					ZeroOcc	AltConf	Trace
3	C	6	Total	C	N	O	S	0	0	0
			49	32	7	8	2			

- Molecule 4 is ZINC ION (three-letter code: ZN) (formula: Zn).

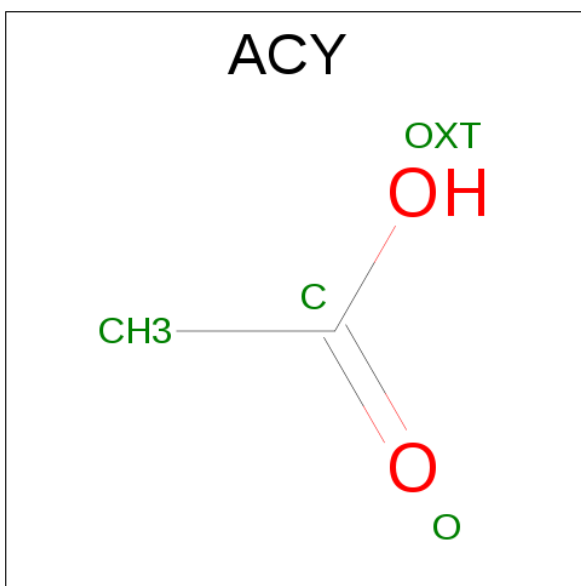
Mol	Chain	Residues	Atoms		ZeroOcc	AltConf
4	B	1	Total	Zn	0	0
			1	1		

- Molecule 5 is [(3,7,11-TRIMETHYL-DODECA-2,6,10-TRIENYLOXYCARBAMOYL)-METHYL]-PHOSPHONIC ACID (three-letter code: FII) (formula: C<sub>17</sub>H<sub>30</sub>NO<sub>5</sub>P).



Mol	Chain	Residues	Atoms					ZeroOcc	AltConf
5	B	1	Total	C	N	O	P	0	0
			24	17	1	5	1		

- Molecule 6 is ACETIC ACID (three-letter code: ACY) (formula:  $C_2H_4O_2$ ).



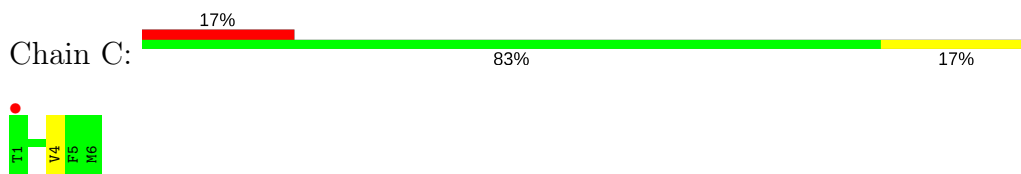
Mol	Chain	Residues	Atoms	ZeroOcc	AltConf
6	B	1	Total C O 4 2 2	0	0
6	B	1	Total C O 4 2 2	0	0

- Molecule 7 is water.

Mol	Chain	Residues	Atoms		ZeroOcc	AltConf
7	A	205	Total 205	O 205	0	0
7	B	223	Total 223	O 223	0	0
7	C	8	Total 8	O 8	0	0



● Molecule 1: PROTEIN FARNESYLTRANSFERASE, ALPHA SUBUNIT



## 4 Data and refinement statistics

Property	Value	Source
Space group	P 61	Depositor
Cell constants a, b, c, $\alpha$ , $\beta$ , $\gamma$	170.92Å 170.92Å 69.42Å 90.00° 90.00° 120.00°	Depositor
Resolution (Å)	50.00 – 2.20 43.56 – 2.10	Depositor EDS
% Data completeness (in resolution range)	89.7 (50.00-2.20) 94.7 (43.56-2.10)	Depositor EDS
$R_{merge}$	0.07	Depositor
$R_{sym}$	(Not available)	Depositor
$\langle I/\sigma(I) \rangle$ <sup>1</sup>	1.90 (at 2.10Å)	Xtriage
Refinement program	X-PLOR 3.851	Depositor
R, $R_{free}$	0.160 , 0.202 0.174 , 0.209	Depositor DCC
$R_{free}$ test set	2838 reflections (5.02%)	DCC
Wilson B-factor (Å <sup>2</sup> )	26.1	Xtriage
Anisotropy	0.278	Xtriage
Bulk solvent $k_{sol}$ (e/Å <sup>3</sup> ), $B_{sol}$ (Å <sup>2</sup> )	0.38 , 62.5	EDS
L-test for twinning <sup>2</sup>	$\langle  L  \rangle = 0.49$ , $\langle L^2 \rangle = 0.32$	Xtriage
Estimated twinning fraction	0.031 for h,-h-k,-l	Xtriage
$F_o, F_c$ correlation	0.96	EDS
Total number of atoms	6466	wwPDB-VP
Average B, all atoms (Å <sup>2</sup> )	35.0	wwPDB-VP

Xtriage's analysis on translational NCS is as follows: *The largest off-origin peak in the Patterson function is 3.38% of the height of the origin peak. No significant pseudotranslation is detected.*

<sup>1</sup>Intensities estimated from amplitudes.

<sup>2</sup>Theoretical values of  $\langle |L| \rangle$ ,  $\langle L^2 \rangle$  for acentric reflections are 0.5, 0.333 respectively for untwinned datasets, and 0.375, 0.2 for perfectly twinned datasets.



## 5 Model quality [i](#)

### 5.1 Standard geometry [i](#)

Bond lengths and bond angles in the following residue types are not validated in this section: ZN, FII, ACY

The Z score for a bond length (or angle) is the number of standard deviations the observed value is removed from the expected value. A bond length (or angle) with  $|Z| > 5$  is considered an outlier worth inspection. RMSZ is the root-mean-square of all Z scores of the bond lengths (or angles).

Mol	Chain	Bond lengths		Bond angles	
		RMSZ	$\# Z  > 5$	RMSZ	$\# Z  > 5$
1	A	0.43	0/2812	0.60	0/3817
2	B	0.45	0/3292	0.64	1/4473 (0.0%)
3	C	0.61	0/49	0.57	0/62
All	All	0.44	0/6153	0.62	1/8352 (0.0%)

There are no bond length outliers.

All (1) bond angle outliers are listed below:

Mol	Chain	Res	Type	Atoms	Z	Observed(°)	Ideal(°)
2	B	308	LEU	CA-CB-CG	-6.91	99.41	115.30

There are no chirality outliers.

There are no planarity outliers.

### 5.2 Too-close contacts [i](#)

In the following table, the Non-H and H(model) columns list the number of non-hydrogen atoms and hydrogen atoms in the chain respectively. The H(added) column lists the number of hydrogen atoms added and optimized by MolProbity. The Clashes column lists the number of clashes within the asymmetric unit, whereas Symm-Clashes lists symmetry related clashes.

Mol	Chain	Non-H	H(model)	H(added)	Clashes	Symm-Clashes
1	A	2745	0	2666	26	0
2	B	3203	0	3130	26	0
3	C	49	0	53	2	0
4	B	1	0	0	0	0
5	B	24	0	28	3	0
6	B	8	0	6	1	0
7	A	205	0	0	5	0

*Continued on next page...*

*Continued from previous page...*

Mol	Chain	Non-H	H(model)	H(added)	Clashes	Symm-Clashes
7	B	223	0	0	7	0
7	C	8	0	0	0	0
All	All	6466	0	5883	55	0

The all-atom clashscore is defined as the number of clashes found per 1000 atoms (including hydrogen atoms). The all-atom clashscore for this structure is 5.

All (55) close contacts within the same asymmetric unit are listed below, sorted by their clash magnitude.

Atom-1	Atom-2	Interatomic distance (Å)	Clash overlap (Å)
1:A:152:MET:O	1:A:156:ILE:HG23	1.89	0.71
1:A:156:ILE:HG22	1:A:172:ARG:HH12	1.57	0.69
1:A:77:PRO:HG3	1:A:102:TYR:CZ	2.28	0.69
2:B:30:HIS:HE1	7:B:1121:HOH:O	1.82	0.63
2:B:239:ILE:HB	2:B:252:THR:HA	1.81	0.63
1:A:357:ARG:HG2	1:A:357:ARG:HH11	1.65	0.61
2:B:53:GLU:HG3	7:B:1548:HOH:O	2.00	0.61
2:B:308:LEU:HD13	2:B:330:PHE:HB3	1.86	0.57
2:B:422:GLY:O	2:B:423:PHE:HB2	2.06	0.56
2:B:151:ALA:HB3	2:B:152:PRO:HD3	1.87	0.56
2:B:70:ARG:HD2	7:B:1555:HOH:O	2.05	0.56
5:B:1002:FII:O36	5:B:1002:FII:H301	2.07	0.54
2:B:259:LEU:HD12	2:B:268:LEU:HD11	1.90	0.52
5:B:1002:FII:H302	3:C:4:VAL:HG23	1.91	0.52
1:A:225:GLN:HG2	7:A:1485:HOH:O	2.10	0.52
2:B:333:GLN:HG3	2:B:387:MET:SD	2.50	0.52
2:B:283:ARG:NH1	7:B:1554:HOH:O	2.42	0.51
1:A:303:GLN:O	1:A:307:SER:HB2	2.11	0.51
1:A:112:ARG:HA	1:A:140:LEU:CD2	2.41	0.51
1:A:294:ASN:O	1:A:298:GLN:HG3	2.10	0.50
2:B:297:ASP:HB3	2:B:300:TYR:CD1	2.47	0.50
1:A:312:ILE:HB	1:A:344:LEU:HD21	1.93	0.50
1:A:300:LEU:HD11	7:A:1562:HOH:O	2.12	0.50
1:A:112:ARG:HA	1:A:140:LEU:HD21	1.94	0.50
1:A:369:ARG:HD3	7:A:1255:HOH:O	2.13	0.48
1:A:97:ARG:HD3	7:A:1472:HOH:O	2.15	0.47
2:B:301:SER:O	2:B:305:ALA:HB3	2.14	0.47
2:B:87:ARG:NH2	2:B:125:ASP:OD2	2.46	0.47
1:A:329:ASN:HB3	1:A:332:ASP:HB3	1.97	0.46
1:A:252:ASP:OD2	1:A:255:VAL:HG23	2.16	0.46
2:B:30:HIS:HD2	7:B:1053:HOH:O	1.98	0.46

*Continued on next page...*

*Continued from previous page...*

Atom-1	Atom-2	Interatomic distance (Å)	Clash overlap (Å)
1:A:156:ILE:HG21	7:A:1440:HOH:O	2.16	0.45
1:A:152:MET:O	1:A:156:ILE:CG2	2.61	0.45
1:A:164:LYS:O	3:C:4:VAL:HG11	2.17	0.45
2:B:359:ASP:HA	6:B:3003:ACY:O	2.16	0.44
1:A:156:ILE:HG22	1:A:172:ARG:NH1	2.28	0.43
1:A:151:GLU:HG3	1:A:175:LEU:HD11	1.99	0.43
5:B:1002:FII:H232	5:B:1002:FII:H181	1.83	0.43
2:B:80:HIS:HB2	7:B:1558:HOH:O	2.17	0.43
2:B:93:TYR:CD2	2:B:96:LEU:HD12	2.53	0.43
2:B:192:LEU:HD23	2:B:199:VAL:CG2	2.48	0.43
2:B:86:LEU:HB2	2:B:107:ILE:HG21	2.00	0.42
2:B:99:SER:O	2:B:102:TRP:HB2	2.20	0.42
1:A:302:LEU:HB3	1:A:306:HIS:HB2	2.01	0.42
2:B:137:ASP:HB2	7:B:1141:HOH:O	2.20	0.41
1:A:96:PHE:HA	1:A:126:LEU:HD13	2.02	0.41
2:B:253:PHE:HA	2:B:307:LEU:HD21	2.02	0.41
1:A:208:TRP:NE1	1:A:212:GLU:HG3	2.35	0.41
1:A:308:SER:O	1:A:312:ILE:HG12	2.20	0.41
2:B:336:GLN:HG2	2:B:370:LEU:HD12	2.03	0.41
1:A:205:HIS:O	1:A:209:VAL:HG23	2.21	0.41
1:A:155:ILE:HD12	1:A:155:ILE:HA	1.91	0.41
2:B:335:LEU:HD23	2:B:373:ALA:HB2	2.03	0.41
2:B:370:LEU:HD23	2:B:394:LEU:HD11	2.03	0.40
2:B:51:VAL:O	2:B:55:ILE:HG12	2.22	0.40

There are no symmetry-related clashes.

## 5.3 Torsion angles [i](#)

### 5.3.1 Protein backbone [i](#)

In the following table, the Percentiles column shows the percent Ramachandran outliers of the chain as a percentile score with respect to all X-ray entries followed by that with respect to entries of similar resolution.

The Analysed column shows the number of residues for which the backbone conformation was analysed, and the total number of residues.

Mol	Chain	Analysed	Favoured	Allowed	Outliers	Percentiles
1	A	321/377 (85%)	303 (94%)	16 (5%)	2 (1%)	28 29

*Continued on next page...*

*Continued from previous page...*

Mol	Chain	Analysed	Favoured	Allowed	Outliers	Percentiles	
2	B	405/437 (93%)	394 (97%)	11 (3%)	0	100	100
3	C	4/6 (67%)	3 (75%)	1 (25%)	0	100	100
All	All	730/820 (89%)	700 (96%)	28 (4%)	2 (0%)	44	49

All (2) Ramachandran outliers are listed below:

Mol	Chain	Res	Type
1	A	304	PRO
1	A	326	GLN

### 5.3.2 Protein sidechains ⓘ

In the following table, the Percentiles column shows the percent sidechain outliers of the chain as a percentile score with respect to all X-ray entries followed by that with respect to entries of similar resolution.

The Analysed column shows the number of residues for which the sidechain conformation was analysed, and the total number of residues.

Mol	Chain	Analysed	Rotameric	Outliers	Percentiles	
1	A	301/338 (89%)	293 (97%)	8 (3%)	50	62
2	B	344/371 (93%)	342 (99%)	2 (1%)	89	94
3	C	6/6 (100%)	6 (100%)	0	100	100
All	All	651/715 (91%)	641 (98%)	10 (2%)	70	82

All (10) residues with a non-rotameric sidechain are listed below:

Mol	Chain	Res	Type
1	A	55	PHE
1	A	58	LEU
1	A	156	ILE
1	A	173	ARG
1	A	257	GLU
1	A	303	GLN
1	A	334	LEU
1	A	347	GLU
2	B	87	ARG
2	B	351	LEU

Some sidechains can be flipped to improve hydrogen bonding and reduce clashes. All (3) such

sidechains are listed below:

Mol	Chain	Res	Type
1	A	303	GLN
2	B	312	HIS
2	B	318	GLN

### 5.3.3 RNA [i](#)

There are no RNA molecules in this entry.

## 5.4 Non-standard residues in protein, DNA, RNA chains [i](#)

There are no non-standard protein/DNA/RNA residues in this entry.

## 5.5 Carbohydrates [i](#)

There are no carbohydrates in this entry.

## 5.6 Ligand geometry [i](#)

Of 4 ligands modelled in this entry, 1 is monoatomic - leaving 3 for Mogul analysis.

In the following table, the Counts columns list the number of bonds (or angles) for which Mogul statistics could be retrieved, the number of bonds (or angles) that are observed in the model and the number of bonds (or angles) that are defined in the chemical component dictionary. The Link column lists molecule types, if any, to which the group is linked. The Z score for a bond length (or angle) is the number of standard deviations the observed value is removed from the expected value. A bond length (or angle) with  $|Z| > 2$  is considered an outlier worth inspection. RMSZ is the root-mean-square of all Z scores of the bond lengths (or angles).

Mol	Type	Chain	Res	Link	Bond lengths			Bond angles		
					Counts	RMSZ	$\# Z  > 2$	Counts	RMSZ	$\# Z  > 2$
5	FII	B	1002	-	23,23,23	1.39	4 (17%)	24,29,29	1.00	2 (8%)
6	ACY	B	3002	-	1,3,3	3.21	1 (100%)	0,3,3	0.00	-
6	ACY	B	3003	-	1,3,3	2.78	1 (100%)	0,3,3	0.00	-

In the following table, the Chirals column lists the number of chiral outliers, the number of chiral centers analysed, the number of these observed in the model and the number defined in the chemical component dictionary. Similar counts are reported in the Torsion and Rings columns. '-' means no outliers of that kind were identified.

Mol	Type	Chain	Res	Link	Chirals	Torsions	Rings
5	FII	B	1002	-	-	0/23/24/24	0/0/0/0
6	ACY	B	3002	-	-	0/0/0/0	0/0/0/0
6	ACY	B	3003	-	-	0/0/0/0	0/0/0/0

All (6) bond length outliers are listed below:

Mol	Chain	Res	Type	Atoms	Z	Observed(Å)	Ideal(Å)
5	B	1002	FII	P46-O51	-3.74	1.46	1.54
5	B	1002	FII	P46-O50	-3.72	1.46	1.54
5	B	1002	FII	P46-O49	-2.38	1.45	1.50
5	B	1002	FII	C43-N42	2.41	1.36	1.32
6	B	3003	ACY	CH3-C	2.78	1.52	1.48
6	B	3002	ACY	CH3-C	3.21	1.52	1.48

All (2) bond angle outliers are listed below:

Mol	Chain	Res	Type	Atoms	Z	Observed(°)	Ideal(°)
5	B	1002	FII	O36-N42-C43	2.23	121.59	118.52
5	B	1002	FII	O44-C43-N42	2.46	126.37	123.44

There are no chirality outliers.

There are no torsion outliers.

There are no ring outliers.

2 monomers are involved in 4 short contacts:

Mol	Chain	Res	Type	Clashes	Symm-Clashes
5	B	1002	FII	3	0
6	B	3003	ACY	1	0

## 5.7 Other polymers [i](#)

There are no such residues in this entry.

## 5.8 Polymer linkage issues [i](#)

There are no chain breaks in this entry.

## 6 Fit of model and data [i](#)

### 6.1 Protein, DNA and RNA chains [i](#)

In the following table, the column labelled ‘#RSRZ> 2’ contains the number (and percentage) of RSRZ outliers, followed by percent RSRZ outliers for the chain as percentile scores relative to all X-ray entries and entries of similar resolution. The OWAB column contains the minimum, median, 95<sup>th</sup> percentile and maximum values of the occupancy-weighted average B-factor per residue. The column labelled ‘Q< 0.9’ lists the number of (and percentage) of residues with an average occupancy less than 0.9.

Mol	Chain	Analysed	<RSRZ>	#RSRZ>2	OWAB(Å <sup>2</sup> )	Q<0.9
1	A	323/377 (85%)	-0.53	3 (0%) 84 83	16, 34, 67, 84	0
2	B	407/437 (93%)	-0.56	5 (1%) 79 77	17, 29, 56, 85	0
3	C	6/6 (100%)	1.09	1 (16%) 2 2	36, 50, 72, 88	0
All	All	736/820 (89%)	-0.53	9 (1%) 79 77	16, 31, 63, 88	0

All (9) RSRZ outliers are listed below:

Mol	Chain	Res	Type	RSRZ
1	A	55	PHE	5.1
3	C	1	THR	4.1
1	A	305	SER	4.1
2	B	64	PHE	4.0
2	B	380	ALA	3.7
2	B	19	TRP	3.2
1	A	302	LEU	2.5
2	B	381	MET	2.4
2	B	423	PHE	2.3

### 6.2 Non-standard residues in protein, DNA, RNA chains [i](#)

There are no non-standard protein/DNA/RNA residues in this entry.

### 6.3 Carbohydrates [i](#)

There are no carbohydrates in this entry.

## 6.4 Ligands [i](#)

In the following table, the Atoms column lists the number of modelled atoms in the group and the number defined in the chemical component dictionary. LLDF column lists the quality of electron density of the group with respect to its neighbouring residues in protein, DNA or RNA chains. The B-factors column lists the minimum, median, 95<sup>th</sup> percentile and maximum values of B factors of atoms in the group. The column labelled 'Q< 0.9' lists the number of atoms with occupancy less than 0.9.

Mol	Type	Chain	Res	Atoms	RSCC	RSR	LLDF	B-factors(Å <sup>2</sup> )	Q<0.9
6	ACY	B	3003	4/4	0.85	0.43	22.18	58,62,64,68	0
5	FII	B	1002	24/24	0.97	0.19	1.74	18,23,34,40	0
6	ACY	B	3002	4/4	0.98	0.06	-0.86	28,28,29,31	0
4	ZN	B	1001	1/1	1.00	0.09	-2.04	23,23,23,23	0

## 6.5 Other polymers [i](#)

There are no such residues in this entry.