



# Full wwPDB X-ray Structure Validation Report ⓘ

Feb 23, 2017 – 01:17 pm GMT

PDB ID : 5JCD  
Title : Crystal structure of OsCEBiP  
Authors : Chai, J.J.; Liu, S.M.; Wang, J.Z.  
Deposited on : 2016-04-15  
Resolution : 2.40 Å(reported)

This is a Full wwPDB X-ray Structure Validation Report for a publicly released PDB entry.

We welcome your comments at [validation@mail.wwpdb.org](mailto:validation@mail.wwpdb.org)

A user guide is available at

<http://wwpdb.org/validation/2016/XrayValidationReportHelp>

with specific help available everywhere you see the ⓘ symbol.

---

The following versions of software and data (see [references ⓘ](#)) were used in the production of this report:

MolProbity : 4.02b-467  
Mogul : 1.7.2 (RC1), CSD as538be (2017)  
Xtriage (Phenix) : 1.9-1692  
EDS : recalc29047  
Percentile statistics : 20161228.v01 (using entries in the PDB archive December 28th 2016)  
Refmac : 5.8.0135  
CCP4 : 6.5.0  
Ideal geometry (proteins) : Engh & Huber (2001)  
Ideal geometry (DNA, RNA) : Parkinson et al. (1996)  
Validation Pipeline (wwPDB-VP) : recalc29047

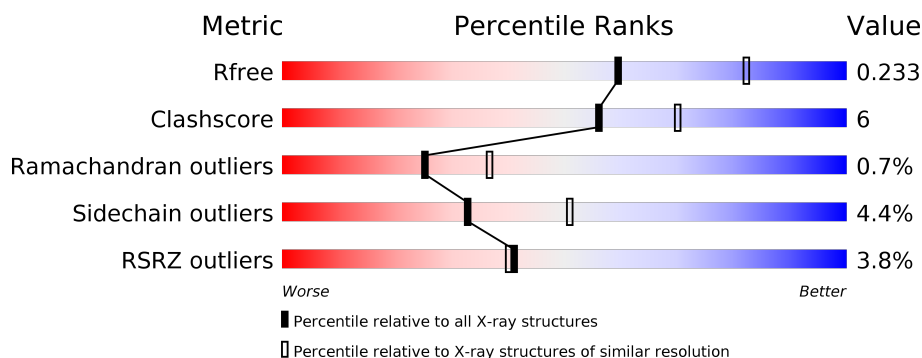
# 1 Overall quality at a glance

The following experimental techniques were used to determine the structure:

*X-RAY DIFFRACTION*

The reported resolution of this entry is 2.40 Å.

Percentile scores (ranging between 0-100) for global validation metrics of the entry are shown in the following graphic. The table shows the number of entries on which the scores are based.



Metric	Whole archive (#Entries)	Similar resolution (#Entries, resolution range(Å))
$R_{free}$	100719	3166 (2.40-2.40)
Clashscore	112137	3674 (2.40-2.40)
Ramachandran outliers	110173	3616 (2.40-2.40)
Sidechain outliers	110143	3617 (2.40-2.40)
RSRZ outliers	101464	3195 (2.40-2.40)

The table below summarises the geometric issues observed across the polymeric chains and their fit to the electron density. The red, orange, yellow and green segments on the lower bar indicate the fraction of residues that contain outliers for  $\geq 3$ , 2, 1 and 0 types of geometric quality criteria. A grey segment represents the fraction of residues that are not modelled. The numeric value for each fraction is indicated below the corresponding segment, with a dot representing fractions  $\leq 5\%$ . The upper red bar (where present) indicates the fraction of residues that have poor fit to the electron density. The numeric value is given above the bar.

Mol	Chain	Length	Quality of chain
1	A	195	<div> <div style="width: 100%; height: 10px; background: linear-gradient(to right, red 1%, orange 1%, yellow 17%, green 81%);"></div> <div style="display: flex; justify-content: space-between; width: 100%;"> <span>%</span> <span>81%</span> <span>17%</span> <span>•</span> </div> </div>
1	B	195	<div> <div style="width: 100%; height: 10px; background: linear-gradient(to right, red 1%, orange 1%, yellow 12%, green 88%);"></div> <div style="display: flex; justify-content: space-between; width: 100%;"> <span>%</span> <span>88%</span> <span>12%</span> <span>•</span> </div> </div>
1	C	195	<div> <div style="width: 100%; height: 10px; background: linear-gradient(to right, red 10%, orange 1%, yellow 16%, green 81%, grey 8%);"></div> <div style="display: flex; justify-content: space-between; width: 100%;"> <span>10%</span> <span>81%</span> <span>16%</span> <span>• •</span> </div> </div>

## 2 Entry composition [i](#)

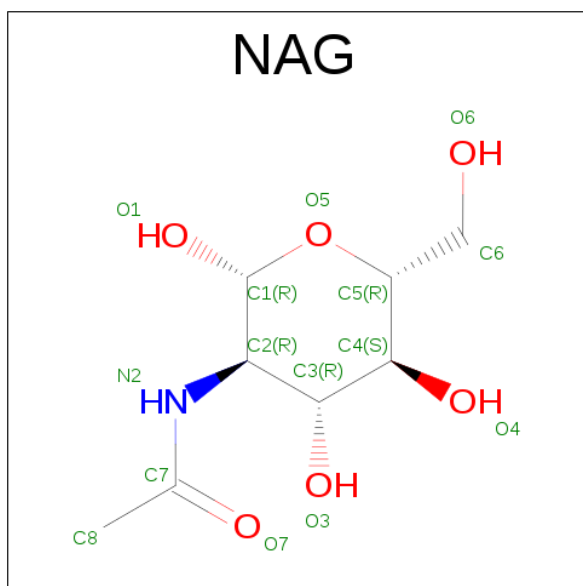
There are 3 unique types of molecules in this entry. The entry contains 4457 atoms, of which 0 are hydrogens and 0 are deuteriums.

In the tables below, the ZeroOcc column contains the number of atoms modelled with zero occupancy, the AltConf column contains the number of residues with at least one atom in alternate conformation and the Trace column contains the number of residues modelled with at most 2 atoms.

- Molecule 1 is a protein called Chitin elicitor-binding protein.

Mol	Chain	Residues	Atoms					ZeroOcc	AltConf	Trace
1	A	195	Total	C	N	O	S	0	0	0
			1446	904	247	287	8			
1	B	195	Total	C	N	O	S	0	0	0
			1448	906	247	287	8			
1	C	192	Total	C	N	O	S	0	0	0
			1425	893	244	280	8			

- Molecule 2 is N-ACETYL-D-GLUCOSAMINE (three-letter code: NAG) (formula:  $C_8H_{15}NO_6$ ).



Mol	Chain	Residues	Atoms				ZeroOcc	AltConf
2	A	1	Total	C	N	O	0	0
			14	8	1	5		
2	A	1	Total	C	N	O	0	0
			14	8	1	5		
2	B	1	Total	C	N	O	0	0
			12	7	1	4		

*Continued on next page...*

*Continued from previous page...*

Mol	Chain	Residues	Atoms				ZeroOcc	AltConf
2	B	1	Total	C	N	O	0	0
			14	8	1	5		

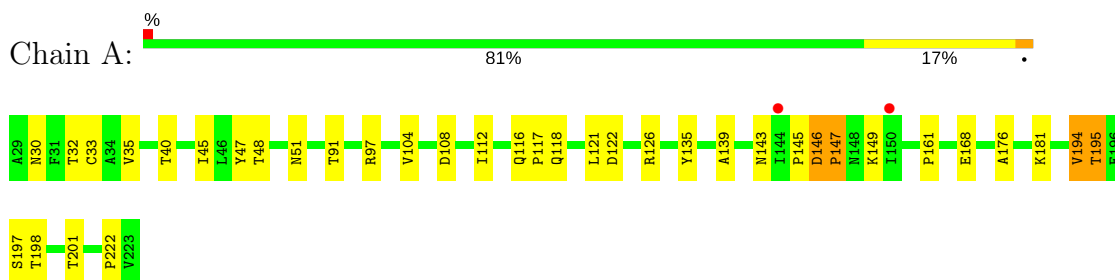
- Molecule 3 is water.

Mol	Chain	Residues	Atoms		ZeroOcc	AltConf
3	A	37	Total	O	0	0
			37	37		
3	B	38	Total	O	0	0
			38	38		
3	C	9	Total	O	0	0
			9	9		

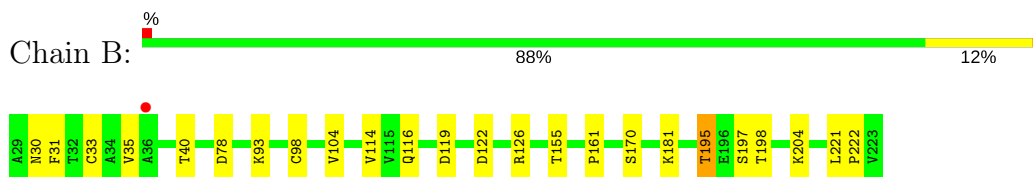
### 3 Residue-property plots

These plots are drawn for all protein, RNA and DNA chains in the entry. The first graphic for a chain summarises the proportions of the various outlier classes displayed in the second graphic. The second graphic shows the sequence view annotated by issues in geometry and electron density. Residues are color-coded according to the number of geometric quality criteria for which they contain at least one outlier: green = 0, yellow = 1, orange = 2 and red = 3 or more. A red dot above a residue indicates a poor fit to the electron density ( $RSRZ > 2$ ). Stretches of 2 or more consecutive residues without any outlier are shown as a green connector. Residues present in the sample, but not in the model, are shown in grey.

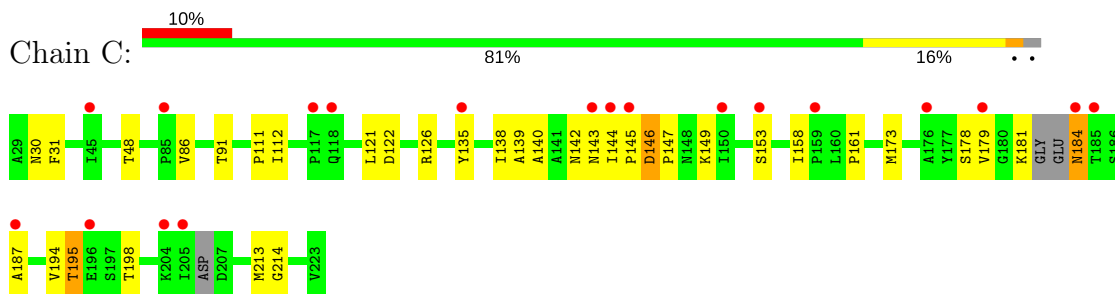
#### • Molecule 1: Chitin elicitor-binding protein



#### • Molecule 1: Chitin elicitor-binding protein



#### • Molecule 1: Chitin elicitor-binding protein



## 4 Data and refinement statistics

Property	Value	Source
Space group	P 1 21 1	Depositor
Cell constants a, b, c, $\alpha$ , $\beta$ , $\gamma$	47.77Å 77.27Å 111.39Å 90.00° 99.02° 90.00°	Depositor
Resolution (Å)	29.60 – 2.40 29.60 – 2.40	Depositor EDS
% Data completeness (in resolution range)	98.2 (29.60-2.40) 98.2 (29.60-2.40)	Depositor EDS
$R_{merge}$	(Not available)	Depositor
$R_{sym}$	(Not available)	Depositor
$\langle I/\sigma(I) \rangle$ <sup>1</sup>	4.28 (at 2.39Å)	Xtriage
Refinement program	PHENIX 1.8_1069	Depositor
R, $R_{free}$	0.220 , 0.276 0.226 , 0.233	Depositor DCC
$R_{free}$ test set	1998 reflections (6.46%)	DCC
Wilson B-factor (Å <sup>2</sup> )	50.4	Xtriage
Anisotropy	0.182	Xtriage
Bulk solvent $k_{sol}$ (e/Å <sup>3</sup> ), $B_{sol}$ (Å <sup>2</sup> )	0.32 , 43.5	EDS
L-test for twinning <sup>2</sup>	$\langle  L  \rangle = 0.49$ , $\langle L^2 \rangle = 0.32$	Xtriage
Estimated twinning fraction	No twinning to report.	Xtriage
$F_o, F_c$ correlation	0.93	EDS
Total number of atoms	4457	wwPDB-VP
Average B, all atoms (Å <sup>2</sup> )	53.0	wwPDB-VP

Xtriage's analysis on translational NCS is as follows: *The largest off-origin peak in the Patterson function is 5.96% of the height of the origin peak. No significant pseudotranslation is detected.*

<sup>1</sup>Intensities estimated from amplitudes.

<sup>2</sup>Theoretical values of  $\langle |L| \rangle$ ,  $\langle L^2 \rangle$  for acentric reflections are 0.5, 0.333 respectively for untwinned datasets, and 0.375, 0.2 for perfectly twinned datasets.

## 5 Model quality

### 5.1 Standard geometry

Bond lengths and bond angles in the following residue types are not validated in this section: NAG

The Z score for a bond length (or angle) is the number of standard deviations the observed value is removed from the expected value. A bond length (or angle) with  $|Z| > 5$  is considered an outlier worth inspection. RMSZ is the root-mean-square of all Z scores of the bond lengths (or angles).

Mol	Chain	Bond lengths		Bond angles	
		RMSZ	# Z  >5	RMSZ	# Z  >5
1	A	0.48	0/1473	0.65	0/2016
1	B	0.47	0/1475	0.66	0/2019
1	C	0.39	0/1450	0.63	0/1982
All	All	0.45	0/4398	0.65	0/6017

There are no bond length outliers.

There are no bond angle outliers.

There are no chirality outliers.

There are no planarity outliers.

### 5.2 Too-close contacts

In the following table, the Non-H and H(model) columns list the number of non-hydrogen atoms and hydrogen atoms in the chain respectively. The H(added) column lists the number of hydrogen atoms added and optimized by MolProbity. The Clashes column lists the number of clashes within the asymmetric unit, whereas Symm-Clashes lists symmetry related clashes.

Mol	Chain	Non-H	H(model)	H(added)	Clashes	Symm-Clashes
1	A	1446	0	1427	19	0
1	B	1448	0	1434	12	0
1	C	1425	0	1414	20	0
2	A	28	0	26	0	0
2	B	26	0	22	0	0
3	A	37	0	0	1	0
3	B	38	0	0	0	0
3	C	9	0	0	0	0
All	All	4457	0	4323	50	0

The all-atom clashscore is defined as the number of clashes found per 1000 atoms (including

hydrogen atoms). The all-atom clashscore for this structure is 6.

All (50) close contacts within the same asymmetric unit are listed below, sorted by their clash magnitude.

Atom-1	Atom-2	Interatomic distance (Å)	Clash overlap (Å)
1:A:195:THR:HG22	1:A:198:THR:H	1.43	0.83
1:B:122:ASP:OD1	1:B:126:ARG:NH1	2.13	0.82
1:C:195:THR:HG22	1:C:198:THR:H	1.45	0.80
1:B:195:THR:HG22	1:B:198:THR:H	1.47	0.80
1:B:30:ASN:OD1	1:B:31:PHE:N	2.13	0.77
1:A:97:ARG:NH1	1:A:108:ASP:OD2	2.18	0.76
1:A:51:ASN:ND2	3:A:401:HOH:O	2.20	0.73
1:C:147:PRO:HB2	1:C:149:LYS:HE2	1.75	0.69
1:A:122:ASP:OD1	1:A:126:ARG:NH1	2.27	0.68
1:C:139:ALA:HA	1:C:145:PRO:HG2	1.76	0.67
1:C:184:ASN:HD21	1:C:187:ALA:HB3	1.59	0.65
1:A:139:ALA:HA	1:A:145:PRO:HG2	1.78	0.63
1:A:146:ASP:OD2	1:A:146:ASP:N	2.30	0.62
1:A:48:THR:HG21	1:B:181:LYS:HE2	1.83	0.59
1:C:147:PRO:HB2	1:C:149:LYS:HG2	1.85	0.58
1:C:181:LYS:HD2	1:C:213:MET:HB2	1.86	0.57
1:A:45:ILE:HG22	1:A:176:ALA:HB3	1.87	0.56
1:B:30:ASN:HB3	1:B:104:VAL:HG21	1.88	0.56
1:A:116:GLN:HB3	1:A:117:PRO:HD2	1.87	0.56
1:C:122:ASP:OD1	1:C:126:ARG:NH1	2.29	0.55
1:B:30:ASN:HB3	1:B:104:VAL:CG2	2.38	0.53
1:A:30:ASN:HB3	1:A:104:VAL:CG2	2.39	0.53
1:A:147:PRO:HB2	1:A:149:LYS:HE3	1.93	0.51
1:B:30:ASN:HD21	1:B:161:PRO:HA	1.76	0.50
1:B:33:CYS:SG	1:B:35:VAL:HG22	2.51	0.50
1:C:48:THR:HG22	1:C:91:THR:HG22	1.94	0.49
1:A:30:ASN:HB3	1:A:104:VAL:HG21	1.94	0.48
1:C:179:VAL:O	1:C:214:GLY:N	2.44	0.48
1:C:181:LYS:HB2	1:C:213:MET:SD	2.53	0.48
1:C:142:ASN:O	1:C:144:ILE:N	2.42	0.47
1:A:112:ILE:HA	1:A:112:ILE:HD13	1.75	0.46
1:A:30:ASN:OD1	1:A:161:PRO:HA	2.16	0.46
1:B:114:VAL:HG22	1:B:155:THR:HG22	1.97	0.46
1:C:30:ASN:OD1	1:C:161:PRO:HB3	2.17	0.45
1:C:138:ILE:HG22	1:C:139:ALA:H	1.83	0.44
1:C:121:LEU:HB2	1:C:135:TYR:HB2	1.99	0.44
1:A:194:VAL:HG23	1:A:222:PRO:HD3	2.00	0.43
1:A:121:LEU:HB3	1:A:135:TYR:HB2	2.00	0.43

*Continued on next page...*



Continued from previous page...

Atom-1	Atom-2	Interatomic distance (Å)	Clash overlap (Å)
1:C:138:ILE:O	1:C:140:ALA:N	2.50	0.43
1:B:40:THR:HA	1:B:98:CYS:O	2.18	0.42
1:A:197:SER:O	1:A:201:THR:HG23	2.20	0.42
1:C:112:ILE:HG13	1:C:112:ILE:H	1.70	0.42
1:A:47:TYR:O	1:A:91:THR:HA	2.20	0.41
1:C:111:PRO:HG2	1:C:158:ILE:HB	2.03	0.41
1:A:33:CYS:SG	1:A:35:VAL:HG22	2.61	0.41
1:C:30:ASN:HB3	1:C:31:PHE:H	1.62	0.41
1:B:116:GLN:O	1:B:119:ASP:HB2	2.21	0.41
1:C:138:ILE:O	1:C:139:ALA:HB3	2.21	0.40
1:C:178:SER:OG	1:C:214:GLY:HA2	2.22	0.40
1:B:221:LEU:HA	1:B:222:PRO:HD2	1.81	0.40

There are no symmetry-related clashes.

## 5.3 Torsion angles ⓘ

### 5.3.1 Protein backbone ⓘ

In the following table, the Percentiles column shows the percent Ramachandran outliers of the chain as a percentile score with respect to all X-ray entries followed by that with respect to entries of similar resolution.

The Analysed column shows the number of residues for which the backbone conformation was analysed, and the total number of residues.

Mol	Chain	Analysed	Favoured	Allowed	Outliers	Percentiles	
1	A	193/195 (99%)	182 (94%)	9 (5%)	2 (1%)	18	26
1	B	193/195 (99%)	187 (97%)	6 (3%)	0	100	100
1	C	186/195 (95%)	175 (94%)	9 (5%)	2 (1%)	17	23
All	All	572/585 (98%)	544 (95%)	24 (4%)	4 (1%)	25	37

All (4) Ramachandran outliers are listed below:

Mol	Chain	Res	Type
1	C	143	ASN
1	A	143	ASN
1	A	147	PRO
1	C	146	ASP

### 5.3.2 Protein sidechains ⓘ

In the following table, the Percentiles column shows the percent sidechain outliers of the chain as a percentile score with respect to all X-ray entries followed by that with respect to entries of similar resolution.

The Analysed column shows the number of residues for which the sidechain conformation was analysed, and the total number of residues.

Mol	Chain	Analysed	Rotameric	Outliers	Percentiles	
1	A	161/162 (99%)	153 (95%)	8 (5%)	28	45
1	B	162/162 (100%)	156 (96%)	6 (4%)	39	59
1	C	159/162 (98%)	152 (96%)	7 (4%)	33	51
All	All	482/486 (99%)	461 (96%)	21 (4%)	33	51

All (21) residues with a non-rotameric sidechain are listed below:

Mol	Chain	Res	Type
1	A	32	THR
1	A	40	THR
1	A	118	GLN
1	A	146	ASP
1	A	168	GLU
1	A	181	LYS
1	A	194	VAL
1	A	195	THR
1	B	78	ASP
1	B	93	LYS
1	B	170	SER
1	B	195	THR
1	B	197	SER
1	B	204	LYS
1	C	86	VAL
1	C	146	ASP
1	C	153	SER
1	C	173	MET
1	C	184	ASN
1	C	194	VAL
1	C	195	THR

Some sidechains can be flipped to improve hydrogen bonding and reduce clashes. There are no such sidechains identified.

### 5.3.3 RNA ⓘ

There are no RNA molecules in this entry.

## 5.4 Non-standard residues in protein, DNA, RNA chains ⓘ

There are no non-standard protein/DNA/RNA residues in this entry.

## 5.5 Carbohydrates ⓘ

There are no carbohydrates in this entry.

## 5.6 Ligand geometry ⓘ

4 ligands are modelled in this entry.

In the following table, the Counts columns list the number of bonds (or angles) for which Mogul statistics could be retrieved, the number of bonds (or angles) that are observed in the model and the number of bonds (or angles) that are defined in the chemical component dictionary. The Link column lists molecule types, if any, to which the group is linked. The Z score for a bond length (or angle) is the number of standard deviations the observed value is removed from the expected value. A bond length (or angle) with  $|Z| > 2$  is considered an outlier worth inspection. RMSZ is the root-mean-square of all Z scores of the bond lengths (or angles).

Mol	Type	Chain	Res	Link	Bond lengths			Bond angles		
					Counts	RMSZ	# $ Z  > 2$	Counts	RMSZ	# $ Z  > 2$
2	NAG	A	301	1	14,14,15	0.46	0	15,19,21	1.68	4 (26%)
2	NAG	A	302	1	14,14,15	0.62	0	15,19,21	1.18	1 (6%)
2	NAG	B	301	1	12,12,15	0.54	0	12,16,21	2.02	2 (16%)
2	NAG	B	302	1	14,14,15	0.41	0	15,19,21	2.53	4 (26%)

In the following table, the Chirals column lists the number of chiral outliers, the number of chiral centers analysed, the number of these observed in the model and the number defined in the chemical component dictionary. Similar counts are reported in the Torsion and Rings columns. '-' means no outliers of that kind were identified.

Mol	Type	Chain	Res	Link	Chirals	Torsions	Rings
2	NAG	A	301	1	-	0/6/23/26	0/1/1/1
2	NAG	A	302	1	-	0/6/23/26	0/1/1/1
2	NAG	B	301	1	-	0/4/18/26	0/1/1/1
2	NAG	B	302	1	-	0/6/23/26	0/1/1/1

There are no bond length outliers.

All (11) bond angle outliers are listed below:

Mol	Chain	Res	Type	Atoms	Z	Observed(°)	Ideal(°)
2	B	301	NAG	C4-C3-C2	-3.49	108.35	111.16
2	A	301	NAG	C2-N2-C7	-2.79	118.87	122.94
2	B	302	NAG	C6-C5-C4	-2.67	106.75	113.00
2	B	302	NAG	O4-C4-C3	-2.59	104.72	110.36
2	A	301	NAG	C4-C3-C2	-2.41	107.49	111.02
2	A	301	NAG	O5-C1-C2	-2.15	108.48	111.47
2	A	302	NAG	C1-O5-C5	3.21	116.59	112.17
2	B	302	NAG	C3-C4-C5	4.09	117.43	110.22
2	A	301	NAG	C1-O5-C5	4.29	118.08	112.17
2	B	301	NAG	C5-O5-C1	5.22	119.58	111.61
2	B	302	NAG	C1-O5-C5	7.45	122.44	112.17

There are no chirality outliers.

There are no torsion outliers.

There are no ring outliers.

No monomer is involved in short contacts.

## 5.7 Other polymers [i](#)

There are no such residues in this entry.

## 5.8 Polymer linkage issues [i](#)

There are no chain breaks in this entry.

## 6 Fit of model and data ⓘ

### 6.1 Protein, DNA and RNA chains ⓘ

In the following table, the column labelled ‘#RSRZ > 2’ contains the number (and percentage) of RSRZ outliers, followed by percent RSRZ outliers for the chain as percentile scores relative to all X-ray entries and entries of similar resolution. The OWAB column contains the minimum, median, 95<sup>th</sup> percentile and maximum values of the occupancy-weighted average B-factor per residue. The column labelled ‘Q < 0.9’ lists the number of (and percentage) of residues with an average occupancy less than 0.9.

Mol	Chain	Analysed	<RSRZ>	#RSRZ>2	OWAB(Å <sup>2</sup> )	Q<0.9
1	A	195/195 (100%)	-0.08	2 (1%) 82 80	24, 43, 80, 112	0
1	B	195/195 (100%)	-0.32	1 (0%) 90 89	28, 42, 60, 95	0
1	C	192/195 (98%)	0.52	19 (9%) 8 7	37, 62, 109, 132	0
All	All	582/585 (99%)	0.04	22 (3%) 41 40	24, 49, 93, 132	0

All (22) RSRZ outliers are listed below:

Mol	Chain	Res	Type	RSRZ
1	C	144	ILE	7.6
1	C	184	ASN	5.3
1	C	145	PRO	3.9
1	A	144	ILE	3.9
1	A	150	ILE	3.6
1	C	205	ILE	3.5
1	C	143	ASN	3.3
1	C	176	ALA	3.2
1	C	117	PRO	3.2
1	C	179	VAL	2.7
1	C	150	ILE	2.6
1	B	36	ALA	2.5
1	C	153	SER	2.5
1	C	196	GLU	2.4
1	C	45	ILE	2.4
1	C	135	TYR	2.4
1	C	85	PRO	2.3
1	C	118	GLN	2.3
1	C	204	LYS	2.3
1	C	185	THR	2.2
1	C	187	ALA	2.1
1	C	159	PRO	2.1

## 6.2 Non-standard residues in protein, DNA, RNA chains [i](#)

There are no non-standard protein/DNA/RNA residues in this entry.

## 6.3 Carbohydrates [i](#)

There are no carbohydrates in this entry.

## 6.4 Ligands [i](#)

In the following table, the Atoms column lists the number of modelled atoms in the group and the number defined in the chemical component dictionary. LLDF column lists the quality of electron density of the group with respect to its neighbouring residues in protein, DNA or RNA chains. The B-factors column lists the minimum, median, 95<sup>th</sup> percentile and maximum values of B factors of atoms in the group. The column labelled 'Q< 0.9' lists the number of atoms with occupancy less than 0.9.

Mol	Type	Chain	Res	Atoms	RSCC	RSR	LLDF	B-factors( $\text{\AA}^2$ )	Q<0.9
2	NAG	A	302	14/15	0.94	0.12	-0.22	31,42,50,54	0
2	NAG	B	302	14/15	0.79	0.21	-	57,65,77,84	0
2	NAG	B	301	12/15	0.93	0.09	-	60,70,75,84	0
2	NAG	A	301	14/15	0.87	0.16	-	52,61,67,67	0

## 6.5 Other polymers [i](#)

There are no such residues in this entry.