



wwPDB NMR Structure Validation Summary Report ⓘ

Feb 12, 2017 – 06:30 pm GMT

PDB ID : 1JFP
Title : Structure of bovine rhodopsin (dark adapted)
Authors : Yeagle, P.L.; Choi, G.; Albert, A.D.
Deposited on : 2001-06-21

This is a wwPDB NMR Structure Validation Summary Report for a publicly released PDB entry.

We welcome your comments at validation@mail.wwpdb.org

A user guide is available at

<http://wwpdb.org/validation/2016/NMRValidationReportHelp>

with specific help available everywhere you see the ⓘ symbol.

The following versions of software and data (see [references ⓘ](#)) were used in the production of this report:

Cyrange	:	Kirchner and Güntert (2011)
NmrClust	:	Kelley et al. (1996)
MolProbity	:	4.02b-467
Mogul	:	1.7.2 (RC1), CSD as538be (2017)
Percentile statistics	:	20161228.v01 (using entries in the PDB archive December 28th 2016)
RCI	:	v_1n_11_5_13_A (Berjanski et al., 2005)
PANAV	:	Wang et al. (2010)
ShiftChecker	:	trunk28760
Ideal geometry (proteins)	:	Engh & Huber (2001)
Ideal geometry (DNA, RNA)	:	Parkinson et al. (1996)
Validation Pipeline (wwPDB-VP)	:	recalc28949

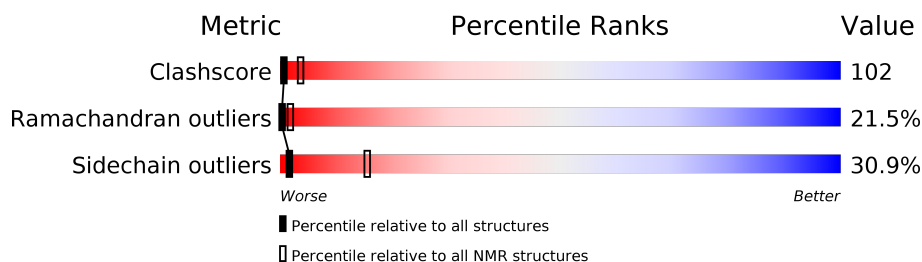
1 Overall quality at a glance

The following experimental techniques were used to determine the structure:

SOLUTION NMR

The overall completeness of chemical shifts assignment was not calculated.

Percentile scores (ranging between 0-100) for global validation metrics of the entry are shown in the following graphic. The table shows the number of entries on which the scores are based.



Metric	Whole archive (#Entries)	NMR archive (#Entries)
Clashscore	125131	11601
Ramachandran outliers	121729	10391
Sidechain outliers	121581	10367

The table below summarises the geometric issues observed across the polymeric chains and their fit to the experimental data. The red, orange, yellow and green segments indicate the fraction of residues that contain outliers for ≥ 3 , 2, 1 and 0 types of geometric quality criteria. A cyan segment indicates the fraction of residues that are not part of the well-defined cores, and a grey segment represents the fraction of residues that are not modelled. The numeric value for each fraction is indicated below the corresponding segment, with a dot representing fractions $\leq 5\%$

Mol	Chain	Length	Quality of chain
1	A	348	

2 Ensemble composition and analysis ⓘ

This entry contains 1 models. Identification of well-defined residues and clustering analysis are not possible.

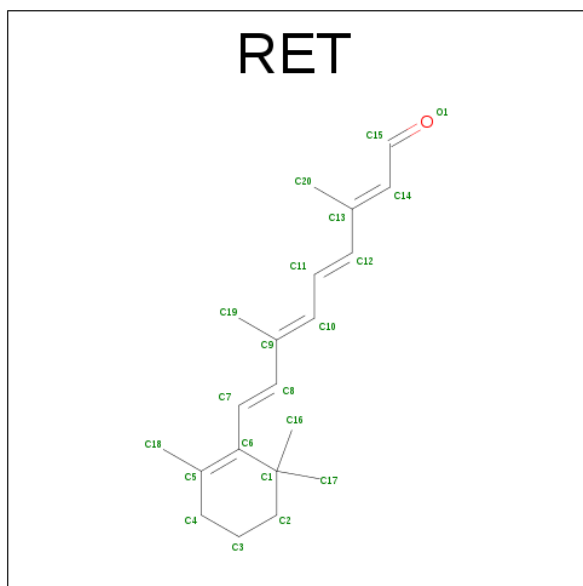
3 Entry composition [i](#)

There are 2 unique types of molecules in this entry. The entry contains 4890 atoms, of which 2444 are hydrogens and 0 are deuteriums.

- Molecule 1 is a protein called rhodopsin.

Mol	Chain	Residues	Atoms						Trace
			Total	C	H	N	O	S	
1	A	309	4842	1607	2416	375	420	24	0

- Molecule 2 is RETINAL (three-letter code: RET) (formula: C₂₀H₂₈O).

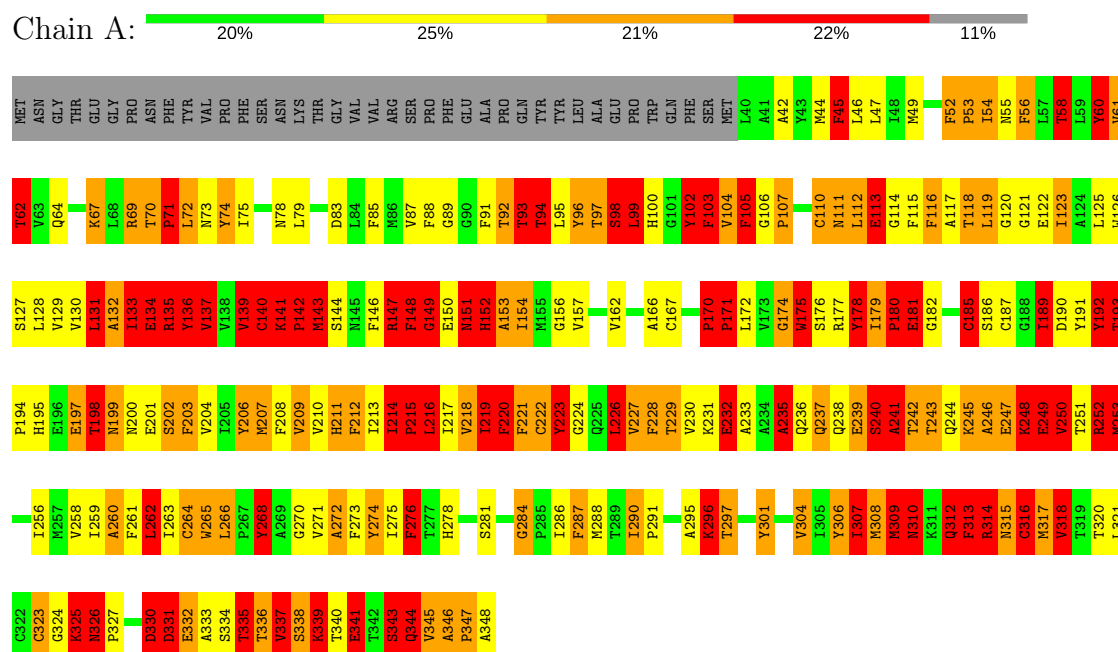


Mol	Chain	Residues	Atoms		
			Total	C	H
2	A	1	48	20	28

4 Residue-property plots

These plots are provided for all protein, RNA and DNA chains in the entry. The first graphic is the same as shown in the summary in section 1 of this report. The second graphic shows the sequence where residues are colour-coded according to the number of geometric quality criteria for which they contain at least one outlier: green = 0, yellow = 1, orange = 2 and red = 3 or more. Stretches of 2 or more consecutive residues without any outliers are shown as green connectors. Residues which are classified as ill-defined in the NMR ensemble, are shown in cyan with an underline colour-coded according to the previous scheme. Residues which were present in the experimental sample, but not modelled in the final structure are shown in grey.

• Molecule 1: rhodopsin



5 Refinement protocol and experimental data overview ⓘ

The models were refined using the following method: ?.

Of the 3 calculated structures, 1 were deposited, based on the following criterion: *target function*.

The following table shows the software used for structure solution, optimisation and refinement.

Software name	Classification	Version
Sybyl	refinement	6.6

No chemical shift data was provided. No validations of the models with respect to experimental NMR restraints is performed at this time.

6 Model quality

6.1 Standard geometry

Bond lengths and bond angles in the following residue types are not validated in this section: RET

The Z score for a bond length (or angle) is the number of standard deviations the observed value is removed from the expected value. A bond length (or angle) with $|Z| > 5$ is considered an outlier worth inspection. RMSZ is the (average) root-mean-square of all Z scores of the bond lengths (or angles).

Mol	Chain	Bond lengths		Bond angles	
		RMSZ	#Z>5	RMSZ	#Z>5
1	A	1.31	15/2496 (0.6%)	2.25	133/3401 (3.9%)
All	All	1.31	15/2496 (0.6%)	2.25	133/3401 (3.9%)

Chiral center outliers are detected by calculating the chiral volume of a chiral center and verifying if the center is modelled as a planar moiety or with the opposite hand. A planarity outlier is detected by checking planarity of atoms in a peptide group, atoms in a mainchain group or atoms of a sidechain that are expected to be planar.

Mol	Chain	Chirality	Planarity
1	A	6	117
All	All	6	117

5 of 15 bond outliers are listed below. They are sorted according to the Z-score.

Mol	Chain	Res	Type	Atoms	Z	Observed(Å)	Ideal(Å)
1	A	296	LYS	C-N	14.95	1.68	1.34
1	A	313	PHE	CA-CB	10.99	1.78	1.53
1	A	310	ASN	N-CA	9.89	1.66	1.46
1	A	253	MET	CA-CB	8.97	1.73	1.53
1	A	307	ILE	N-CA	8.86	1.64	1.46

5 of 133 angle outliers are listed below. They are sorted according to the Z-score.

Mol	Chain	Res	Type	Atoms	Z	Observed(°)	Ideal(°)
1	A	178	TYR	CB-CG-CD1	-15.80	111.52	121.00
1	A	309	MET	CB-CA-C	-14.74	80.93	110.40
1	A	246	ALA	N-CA-CB	-14.20	90.22	110.10
1	A	140	CYS	CB-CA-C	-12.61	85.18	110.40
1	A	178	TYR	CG-CD1-CE1	-12.54	111.27	121.30

All chiral outliers are listed below.

Mol	Chain	Res	Type	Atoms
1	A	110	CYS	CA
1	A	140	CYS	CA
1	A	191	TYR	CA
1	A	242	THR	CA
1	A	335	THR	CB,CA

5 of 115 planar outliers are listed below.

Mol	Chain	Res	Type	Group
1	A	67	LYS	Peptide
1	A	341	GLU	Peptide
1	A	62	THR	Peptide
1	A	72	LEU	Peptide
1	A	290	ILE	Mainchain

6.2 Too-close contacts

In the following table, the Non-H and H(model) columns list the number of non-hydrogen atoms and hydrogen atoms in each chain respectively. The H(added) column lists the number of hydrogen atoms added and optimized by MolProbity. The Clashes column lists the number of clashes averaged over the ensemble.

Mol	Chain	Non-H	H(model)	H(added)	Clashes
1	A	2426	2416	2402	499
2	A	20	28	24	25
All	All	2446	2444	2426	499

The all-atom clashscore is defined as the number of clashes found per 1000 atoms (including hydrogen atoms). The all-atom clashscore for this structure is 102.

5 of 499 clashes are listed below, sorted by their clash magnitude.

Atom-1	Atom-2	Clash(Å)	Distance(Å)
1:A:317:MET:CB	1:A:343:SER:HB2	1.63	1.11
1:A:313:PHE:CB	1:A:313:PHE:CA	1.60	1.78
1:A:317:MET:CB	1:A:343:SER:CB	1.60	1.79
1:A:140:CYS:HB3	1:A:141:LYS:CA	1.55	1.11
1:A:249:GLU:HB3	1:A:313:PHE:CE2	1.51	1.37

6.3 Torsion angles

6.3.1 Protein backbone

In the following table, the Percentiles column shows the percent Ramachandran outliers of the chain as a percentile score with respect to all PDB entries followed by that with respect to all NMR entries. The Analysed column shows the number of residues for which the backbone conformation was analysed and the total number of residues.

Mol	Chain	Analysed	Favoured	Allowed	Outliers	Percentiles	
1	A	307/348 (88%)	147 (48%)	94 (31%)	66 (21%)	0	2
All	All	307/348 (88%)	147 (48%)	94 (31%)	66 (21%)	0	2

5 of 66 Ramachandran outliers are listed below. They are sorted by the frequency of occurrence in the ensemble.

Mol	Chain	Res	Type
1	A	219	ILE
1	A	99	LEU
1	A	171	PRO
1	A	253	MET
1	A	240	SER

6.3.2 Protein sidechains

In the following table, the Percentiles column shows the percent sidechain outliers of the chain as a percentile score with respect to all PDB entries followed by that with respect to all NMR entries. The Analysed column shows the number of residues for which the sidechain conformation was analysed and the total number of residues.

Mol	Chain	Analysed	Rotameric	Outliers	Percentiles	
1	A	262/296 (89%)	181 (69%)	81 (31%)	1	15
All	All	262/296 (89%)	181 (69%)	81 (31%)	1	15

5 of 81 residues with a non-rotameric sidechain are listed below. They are sorted by the frequency of occurrence in the ensemble.

Mol	Chain	Res	Type
1	A	116	PHE
1	A	99	LEU
1	A	69	ARG
1	A	309	MET
1	A	87	VAL

6.3.3 RNA [i](#)

There are no RNA molecules in this entry.

6.4 Non-standard residues in protein, DNA, RNA chains [i](#)

There are no non-standard protein/DNA/RNA residues in this entry.

6.5 Carbohydrates [i](#)

There are no carbohydrates in this entry.

6.6 Ligand geometry [i](#)

1 ligand is modelled in this entry.

In the following table, the Counts columns list the number of bonds for which Mogul statistics could be retrieved, the number of bonds that are observed in the model and the number of bonds that are defined in the chemical component dictionary. The Link column lists molecule types, if any, to which the group is linked. The Z score for a bond length is the number of standard deviations the observed value is removed from the expected value. A bond length with $|Z| > 2$ is considered an outlier worth inspection. RMSZ is the average root-mean-square of all Z scores of the bond lengths.

Mol	Type	Chain	Res	Link	Bond lengths		
					Counts	RMSZ	#Z>2
2	RET	A	400	1	19,20,21	0.44	0 (0%)

In the following table, the Counts columns list the number of angles for which Mogul statistics could be retrieved, the number of angles that are observed in the model and the number of angles that are defined in the chemical component dictionary. The Link column lists molecule types, if any, to which the group is linked. The Z score for a bond angle is the number of standard deviations the observed value is removed from the expected value. A bond angle with $|Z| > 2$ is considered an outlier worth inspection. RMSZ is the average root-mean-square of all Z scores of the bond angles.

Mol	Type	Chain	Res	Link	Bond angles		
					Counts	RMSZ	#Z>2
2	RET	A	400	1	27,27,28	0.73	0 (0%)

In the following table, the Chirals column lists the number of chiral outliers, the number of chiral centers analysed, the number of these observed in the model and the number defined in the chemical component dictionary. Similar counts are reported in the Torsion and Rings columns. '-' means

no outliers of that kind were identified.

Mol	Type	Chain	Res	Link	Chirals	Torsions	Rings
2	RET	A	400	1	-	0,13,30,31	0,1,1,1

There are no bond-length outliers.

There are no bond-angle outliers.

There are no chirality outliers.

There are no torsion outliers.

There are no ring outliers.

6.7 Other polymers [i](#)

There are no such molecules in this entry.

6.8 Polymer linkage issues [i](#)

There are no chain breaks in this entry.

7 Chemical shift validation

No chemical shift data were provided