



# Full wwPDB X-ray Structure Validation Report ⓘ

Feb 14, 2017 – 05:39 am GMT

PDB ID : 1JGZ  
Title : Photosynthetic Reaction Center Mutant With Tyr M 76 Replaced With Lys  
Authors : Camara-Artigas, A.; Magee, C.L.; Williams, J.C.; Allen, J.P.  
Deposited on : 2001-06-27  
Resolution : 2.70 Å(reported)

This is a Full wwPDB X-ray Structure Validation Report for a publicly released PDB entry.

We welcome your comments at [validation@mail.wwpdb.org](mailto:validation@mail.wwpdb.org)

A user guide is available at

<http://wwpdb.org/validation/2016/XrayValidationReportHelp>

with specific help available everywhere you see the ⓘ symbol.

---

The following versions of software and data (see [references ⓘ](#)) were used in the production of this report:

MolProbity : 4.02b-467  
Mogul : 1.7.2 (RC1), CSD as538be (2017)  
Xtriage (Phenix) : **NOT EXECUTED**  
EDS : **NOT EXECUTED**  
Percentile statistics : 20161228.v01 (using entries in the PDB archive December 28th 2016)  
Ideal geometry (proteins) : Engh & Huber (2001)  
Ideal geometry (DNA, RNA) : Parkinson et al. (1996)  
Validation Pipeline (wwPDB-VP) : recalc28949

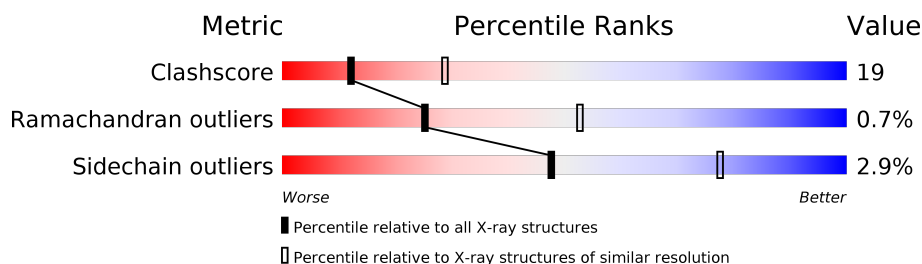
# 1 Overall quality at a glance

The following experimental techniques were used to determine the structure:

*X-RAY DIFFRACTION*

The reported resolution of this entry is 2.70 Å.

Percentile scores (ranging between 0-100) for global validation metrics of the entry are shown in the following graphic. The table shows the number of entries on which the scores are based.



Metric	Whole archive (#Entries)	Similar resolution (#Entries, resolution range(Å))
Clashscore	112137	2590 (2.70-2.70)
Ramachandran outliers	110173	2550 (2.70-2.70)
Sidechain outliers	110143	2550 (2.70-2.70)

The table below summarises the geometric issues observed across the polymeric chains and their fit to the electron density. The red, orange, yellow and green segments on the lower bar indicate the fraction of residues that contain outliers for  $\geq 3$ , 2, 1 and 0 types of geometric quality criteria. A grey segment represents the fraction of residues that are not modelled. The numeric value for each fraction is indicated below the corresponding segment, with a dot representing fractions  $\leq 5\%$ . The upper red bar (where present) indicates the fraction of residues that have poor fit to the electron density. The numeric value is given above the bar.

Note EDS was not executed.

Mol	Chain	Length	Quality of chain
1	L	281	
2	M	307	
3	H	260	

## 2 Entry composition

There are 10 unique types of molecules in this entry. The entry contains 7096 atoms, of which 0 are hydrogens and 0 are deuteriums.

In the tables below, the ZeroOcc column contains the number of atoms modelled with zero occupancy, the AltConf column contains the number of residues with at least one atom in alternate conformation and the Trace column contains the number of residues modelled with at most 2 atoms.

- Molecule 1 is a protein called Photosynthetic Reaction Center L subunit.

Mol	Chain	Residues	Atoms					ZeroOcc	AltConf	Trace
1	L	281	Total	C	N	O	S	0	0	0
			2232	1507	355	362	8			

- Molecule 2 is a protein called Photosynthetic Reaction Center M subunit.

Mol	Chain	Residues	Atoms					ZeroOcc	AltConf	Trace
2	M	302	Total	C	N	O	S	0	0	0
			2405	1604	395	396	10			

There is a discrepancy between the modelled and reference sequences:

Chain	Residue	Modelled	Actual	Comment	Reference
M	76	LYS	TYR	ENGINEERED	UNP P02953

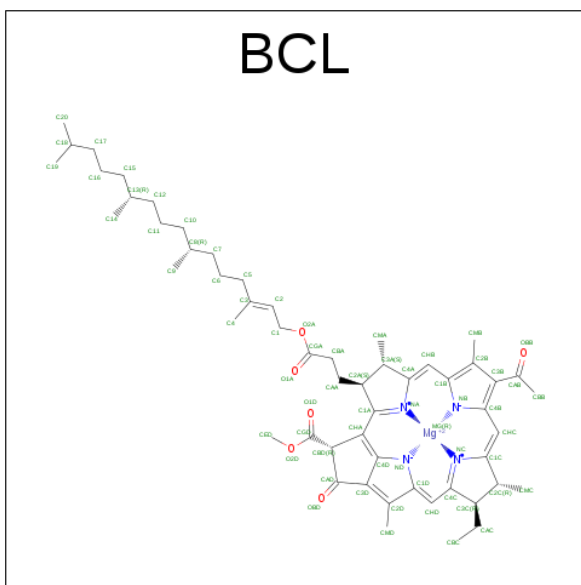
- Molecule 3 is a protein called Photosynthetic Reaction Center H subunit.

Mol	Chain	Residues	Atoms					ZeroOcc	AltConf	Trace
3	H	236	Total	C	N	O	S	0	0	0
			1794	1148	305	332	9			

- Molecule 4 is FE (III) ION (three-letter code: FE) (formula: Fe).

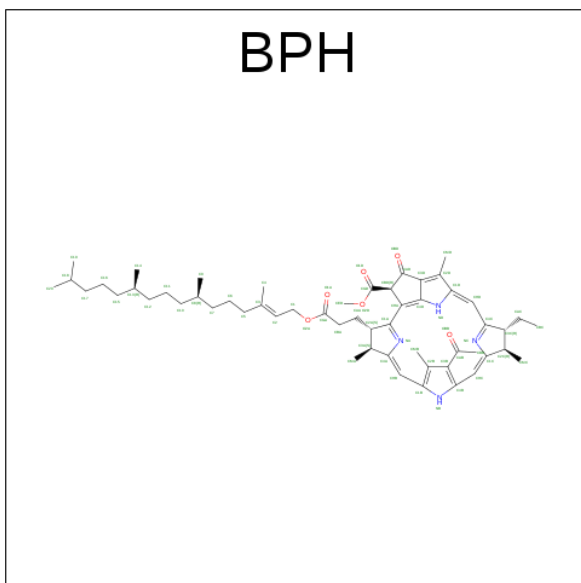
Mol	Chain	Residues	Atoms		ZeroOcc	AltConf
4	M	1	Total	Fe	0	0
			1	1		

- Molecule 5 is BACTERIOCHLOROPHYLL A (three-letter code: BCL) (formula: C<sub>55</sub>H<sub>74</sub>MgN<sub>4</sub>O<sub>6</sub>).



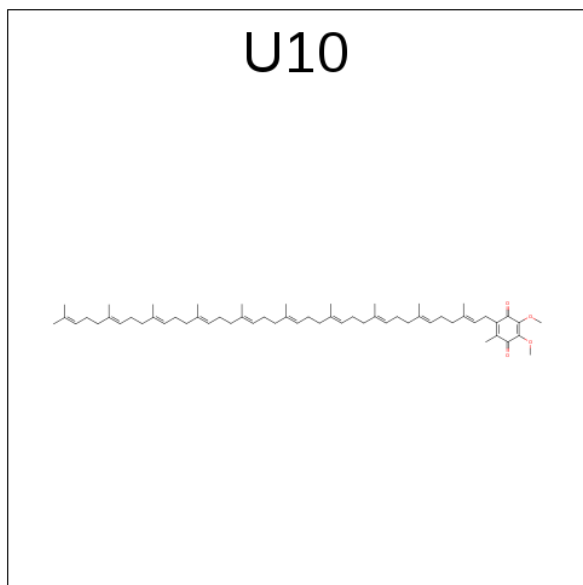
Mol	Chain	Residues	Atoms					ZeroOcc	AltConf
5	L	1	Total 66	C 55	Mg 1	N 4	O 6	0	0
5	L	1	Total 66	C 55	Mg 1	N 4	O 6	0	0
5	M	1	Total 66	C 55	Mg 1	N 4	O 6	0	0
5	M	1	Total 66	C 55	Mg 1	N 4	O 6	0	0

- Molecule 6 is BACTERIOPHEOPHYTIN A (three-letter code: BPH) (formula:  $\text{C}_{55}\text{H}_{76}\text{N}_4\text{O}_6$ ).



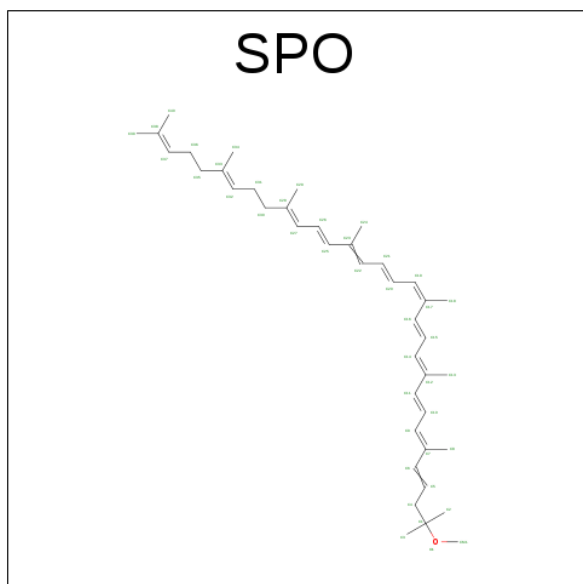
Mol	Chain	Residues	Atoms				ZeroOcc	AltConf
6	M	1	Total	C	N	O	0	0
			65	55	4	6		
6	L	1	Total	C	N	O	0	0
			65	55	4	6		

- Molecule 7 is UBIQUINONE-10 (three-letter code: U10) (formula:  $C_{59}H_{90}O_4$ ).



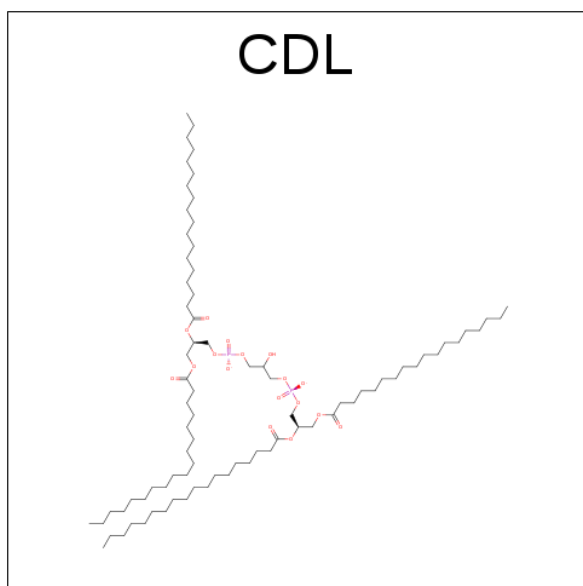
Mol	Chain	Residues	Atoms			ZeroOcc	AltConf
7	M	1	Total	C	O	0	0
			48	44	4		

- Molecule 8 is SPHEROIDENE (three-letter code: SPO) (formula:  $C_{41}H_{60}O$ ).



Mol	Chain	Residues	Atoms			ZeroOcc	AltConf
8	M	1	Total	C	O	0	0
			42	41	1		

- Molecule 9 is CARDIOLIPIN (three-letter code: CDL) (formula:  $C_{81}H_{156}O_{17}P_2$ ).



Mol	Chain	Residues	Atoms				ZeroOcc	AltConf
9	M	1	Total	C	O	P	0	0
			81	62	17	2		

- Molecule 10 is water.

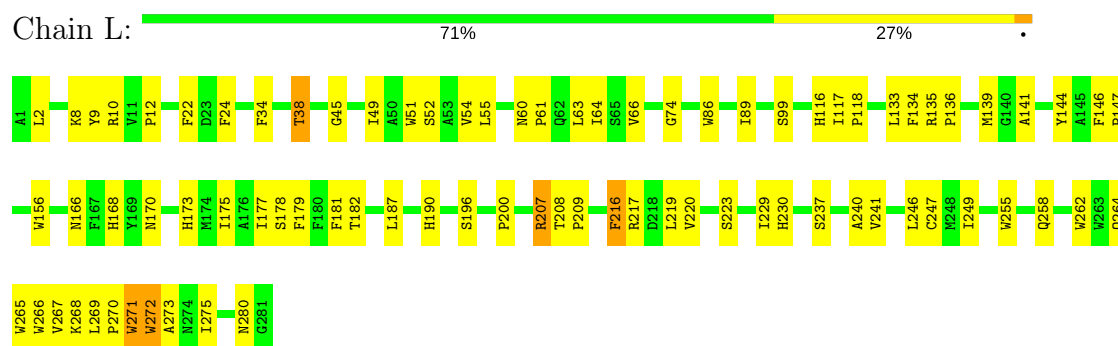
Mol	Chain	Residues	Atoms		ZeroOcc	AltConf
10	H	38	Total	O	0	0
			38	38		
10	L	25	Total	O	0	0
			25	25		
10	M	36	Total	O	0	0
			36	36		

### 3 Residue-property plots

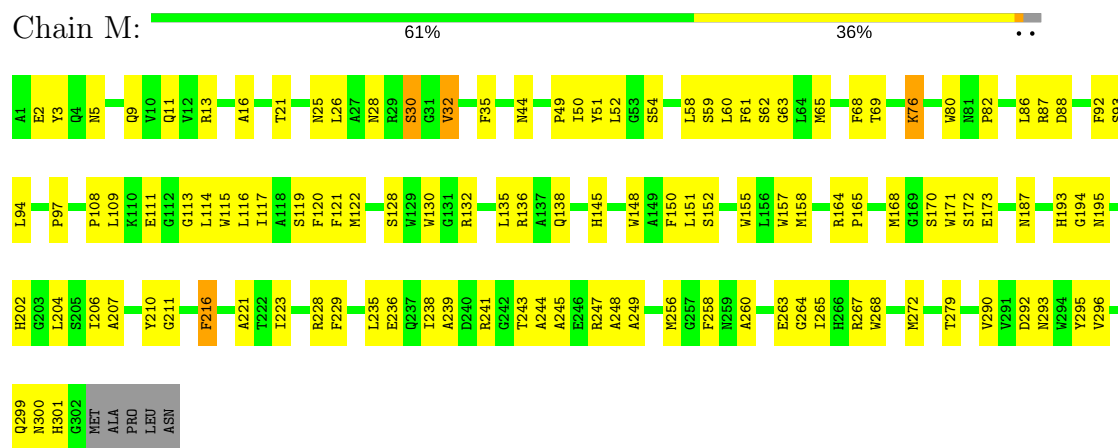
These plots are drawn for all protein, RNA and DNA chains in the entry. The first graphic for a chain summarises the proportions of the various outlier classes displayed in the second graphic. The second graphic shows the sequence view annotated by issues in geometry and electron density. Residues are color-coded according to the number of geometric quality criteria for which they contain at least one outlier: green = 0, yellow = 1, orange = 2 and red = 3 or more. A red dot above a residue indicates a poor fit to the electron density ( $RSRZ > 2$ ). Stretches of 2 or more consecutive residues without any outlier are shown as a green connector. Residues present in the sample, but not in the model, are shown in grey.

Note EDS was not executed.

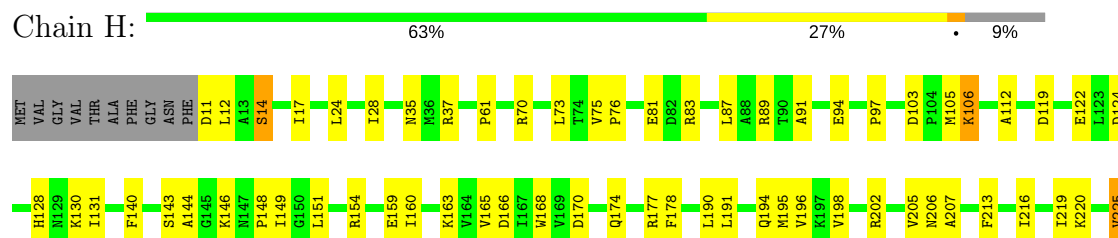
#### • Molecule 1: Photosynthetic Reaction Center L subunit



#### • Molecule 2: Photosynthetic Reaction Center M subunit



#### • Molecule 3: Photosynthetic Reaction Center H subunit



T226	E229	E230	D231	K232	L233	C234	G235	V236	V237	L241	M242	Y243	A244	A245	P246	LYS	ARG	LYS	SER	VAL	VAL	ALA	ALA	ALA	MET	LEU	ALA	GLU	TYR	ALA
------	------	------	------	------	------	------	------	------	------	------	------	------	------	------	------	-----	-----	-----	-----	-----	-----	-----	-----	-----	-----	-----	-----	-----	-----	-----



## 4 Data and refinement statistics

Xtriage (Phenix) and EDS were not executed - this section is therefore incomplete.

Property	Value	Source
Space group	P 31 2 1	Depositor
Cell constants a, b, c, $\alpha$ , $\beta$ , $\gamma$	142.61Å 142.61Å 187.61Å 90.00° 90.00° 120.00°	Depositor
Resolution (Å)	28.64 – 2.70	Depositor
% Data completeness (in resolution range)	72.4 (28.64-2.70)	Depositor
$R_{merge}$	0.17	Depositor
$R_{sym}$	(Not available)	Depositor
Refinement program	CNS 1.0	Depositor
R, $R_{free}$	0.215 , 0.249	Depositor
Estimated twinning fraction	No twinning to report.	Xtriage
Total number of atoms	7096	wwPDB-VP
Average B, all atoms (Å <sup>2</sup> )	52.0	wwPDB-VP

## 5 Model quality

### 5.1 Standard geometry

Bond lengths and bond angles in the following residue types are not validated in this section: BCL, CDL, BPH, FE, SPO, U10

The Z score for a bond length (or angle) is the number of standard deviations the observed value is removed from the expected value. A bond length (or angle) with  $|Z| > 5$  is considered an outlier worth inspection. RMSZ is the root-mean-square of all Z scores of the bond lengths (or angles).

Mol	Chain	Bond lengths		Bond angles	
		RMSZ	$\# Z  > 5$	RMSZ	$\# Z  > 5$
1	L	0.46	0/2320	0.63	0/3175
2	M	0.46	0/2496	0.61	0/3406
3	H	0.43	0/1842	0.67	0/2509
All	All	0.45	0/6658	0.63	0/9090

There are no bond length outliers.

There are no bond angle outliers.

There are no chirality outliers.

There are no planarity outliers.

### 5.2 Too-close contacts

In the following table, the Non-H and H(model) columns list the number of non-hydrogen atoms and hydrogen atoms in the chain respectively. The H(added) column lists the number of hydrogen atoms added and optimized by MolProbity. The Clashes column lists the number of clashes within the asymmetric unit, whereas Symm-Clashes lists symmetry related clashes.

Mol	Chain	Non-H	H(model)	H(added)	Clashes	Symm-Clashes
1	L	2232	0	2187	93	0
2	M	2405	0	2325	130	0
3	H	1794	0	1792	59	0
4	M	1	0	0	0	0
5	L	132	0	148	9	0
5	M	132	0	148	12	0
6	L	65	0	76	6	0
6	M	65	0	76	4	0
7	M	48	0	63	6	0
8	M	42	0	60	4	0

*Continued on next page...*

*Continued from previous page...*

Mol	Chain	Non-H	H(model)	H(added)	Clashes	Symm-Clashes
9	M	81	0	106	3	0
10	H	38	0	0	7	0
10	L	25	0	0	3	0
10	M	36	0	0	4	0
All	All	7096	0	6981	266	0

The all-atom clashscore is defined as the number of clashes found per 1000 atoms (including hydrogen atoms). The all-atom clashscore for this structure is 19.

All (266) close contacts within the same asymmetric unit are listed below, sorted by their clash magnitude.

Atom-1	Atom-2	Interatomic distance (Å)	Clash overlap (Å)
2:M:243:THR:CG2	2:M:247:ARG:HE	1.71	1.03
2:M:21:THR:HG23	2:M:26:LEU:HD21	1.51	0.93
2:M:279:THR:HB	10:M:1024:HOH:O	1.70	0.91
3:H:148:PRO:HA	3:H:151:LEU:HD12	1.53	0.90
3:H:245:ALA:HB3	3:H:246:PRO:HD3	1.56	0.87
1:L:219:LEU:HA	2:M:132:ARG:HH12	1.40	0.86
2:M:243:THR:HG21	2:M:247:ARG:HE	1.40	0.84
2:M:243:THR:HG22	2:M:247:ARG:HE	1.43	0.83
1:L:51:TRP:O	1:L:54:VAL:HG22	1.81	0.79
2:M:97:PRO:HG2	2:M:171:TRP:HB2	1.62	0.79
2:M:260:ALA:HB1	10:H:1026:HOH:O	1.83	0.78
2:M:265:ILE:HG22	10:M:1007:HOH:O	1.86	0.73
2:M:94:LEU:HD21	2:M:115:TRP:HA	1.71	0.72
1:L:230:HIS:CD2	2:M:223:ILE:HG13	2.24	0.71
2:M:16:ALA:CB	2:M:32:VAL:HG11	2.20	0.71
3:H:226:THR:OG1	3:H:229:GLU:HG3	1.92	0.70
2:M:228:ARG:NE	3:H:195:MET:HE3	2.07	0.70
1:L:264:GLN:HA	1:L:267:VAL:HG12	1.72	0.70
2:M:243:THR:HG22	2:M:247:ARG:HG3	1.74	0.69
6:L:855:BPH:HBB2	2:M:210:TYR:HB3	1.74	0.69
1:L:267:VAL:HG23	2:M:87:ARG:HD2	1.76	0.68
2:M:119:SER:HB3	8:M:859:SPO:H311	1.74	0.68
2:M:16:ALA:HB1	2:M:32:VAL:HG11	1.74	0.68
5:L:850:BCL:H11	6:M:854:BPH:HBB2	1.76	0.67
2:M:264:GLY:HA3	3:H:35:ASN:OD1	1.95	0.65
3:H:213:PHE:O	3:H:216:ILE:HG13	1.96	0.65
2:M:59:SER:HG	2:M:128:SER:HG	1.44	0.64
1:L:271:TRP:CD1	1:L:271:TRP:N	2.65	0.62
2:M:248:ALA:HB1	7:M:857:U10:H3M2	1.81	0.62

*Continued on next page...*

*Continued from previous page...*

Atom-1	Atom-2	Interatomic distance (Å)	Clash overlap (Å)
1:L:135:ARG:HD3	10:L:1067:HOH:O	1.98	0.62
1:L:219:LEU:HD12	2:M:132:ARG:HH11	1.64	0.62
2:M:157:TRP:CE3	2:M:158:MET:HG2	2.35	0.61
2:M:206:ILE:HG23	5:M:852:BCL:HMB3	1.83	0.61
1:L:135:ARG:HB3	1:L:136:PRO:HD3	1.82	0.61
2:M:204:LEU:O	2:M:207:ALA:HB3	2.00	0.61
1:L:187:LEU:HD13	2:M:216:PHE:CG	2.35	0.61
1:L:133:LEU:C	1:L:133:LEU:HD23	2.20	0.61
1:L:74:GLY:O	1:L:141:ALA:HA	2.01	0.60
2:M:202:HIS:CE1	2:M:206:ILE:HD11	2.36	0.60
1:L:219:LEU:HA	2:M:132:ARG:NH1	2.14	0.60
1:L:230:HIS:HD2	2:M:223:ILE:HG13	1.65	0.60
1:L:60:ASN:ND2	1:L:63:LEU:HG	2.16	0.60
1:L:269:LEU:HD12	1:L:272:TRP:HZ2	1.66	0.59
2:M:228:ARG:CD	3:H:195:MET:HE3	2.32	0.59
2:M:3:TYR:CZ	2:M:5:ASN:HA	2.37	0.59
1:L:60:ASN:O	1:L:64:ILE:HG13	2.01	0.59
10:L:1091:HOH:O	2:M:49:PRO:HG2	2.02	0.59
2:M:168:MET:CB	2:M:173:GLU:HG3	2.33	0.58
2:M:97:PRO:HA	2:M:111:GLU:O	2.04	0.58
3:H:119:ASP:OD2	3:H:220:LYS:NZ	2.37	0.58
1:L:12:PRO:HG3	3:H:97:PRO:CB	2.33	0.58
1:L:268:LYS:O	1:L:273:ALA:HB2	2.04	0.58
3:H:196:VAL:HG12	3:H:205:VAL:HG22	1.86	0.58
1:L:219:LEU:HD12	2:M:132:ARG:NH1	2.18	0.58
2:M:138:GLN:HA	10:M:1025:HOH:O	2.04	0.58
2:M:130:TRP:HD1	2:M:150:PHE:CD2	2.22	0.58
5:M:852:BCL:HBB3	5:M:853:BCL:HMD2	1.86	0.58
3:H:70:ARG:HH11	3:H:70:ARG:HG3	1.69	0.57
2:M:108:PRO:HG2	2:M:111:GLU:HB2	1.85	0.57
3:H:103:ASP:HB3	3:H:106:LYS:HB2	1.85	0.57
3:H:11:ASP:OD1	3:H:14:SER:HB2	2.05	0.57
1:L:60:ASN:HD22	1:L:63:LEU:HG	1.69	0.57
1:L:133:LEU:HD23	1:L:133:LEU:O	2.05	0.57
1:L:49:ILE:HG12	1:L:89:ILE:HD13	1.87	0.57
2:M:265:ILE:N	10:H:1026:HOH:O	2.38	0.57
2:M:16:ALA:HB1	2:M:32:VAL:HG21	1.87	0.57
2:M:113:GLY:HA2	2:M:116:LEU:HD12	1.86	0.56
2:M:76:LYS:O	2:M:76:LYS:HD3	2.05	0.56
2:M:94:LEU:HD12	10:M:1011:HOH:O	2.04	0.56
1:L:269:LEU:HD12	1:L:272:TRP:CZ2	2.40	0.56

*Continued on next page...*

*Continued from previous page...*

Atom-1	Atom-2	Interatomic distance (Å)	Clash overlap (Å)
5:L:851:BCL:HAA2	5:M:853:BCL:HBC1	1.87	0.55
1:L:45:GLY:O	1:L:49:ILE:HG13	2.06	0.55
2:M:152:SER:O	2:M:155:TRP:HB3	2.06	0.55
1:L:269:LEU:HB2	1:L:272:TRP:NE1	2.21	0.55
1:L:219:LEU:CA	2:M:132:ARG:HH12	2.16	0.55
1:L:34:PHE:O	1:L:38:THR:HG23	2.07	0.55
2:M:119:SER:CB	8:M:859:SPO:H342	2.37	0.55
3:H:245:ALA:CB	3:H:246:PRO:HD3	2.34	0.55
1:L:34:PHE:O	1:L:38:THR:CG2	2.54	0.54
2:M:51:TYR:O	2:M:132:ARG:NH2	2.40	0.54
5:M:853:BCL:HBD	5:M:853:BCL:HAA2	1.89	0.54
1:L:54:VAL:HG23	1:L:55:LEU:HD23	1.88	0.54
2:M:293:ASN:OD1	2:M:295:TYR:HB3	2.08	0.54
1:L:179:PHE:HB3	1:L:240:ALA:HB2	1.90	0.54
1:L:246:LEU:O	1:L:249:ILE:HG22	2.08	0.54
3:H:177:ARG:HG2	3:H:177:ARG:HH11	1.73	0.54
1:L:133:LEU:HD22	1:L:134:PHE:CD1	2.44	0.54
1:L:34:PHE:HB2	10:L:1051:HOH:O	2.08	0.53
1:L:12:PRO:HG3	3:H:97:PRO:HB2	1.89	0.53
2:M:268:TRP:HD1	10:H:1026:HOH:O	1.90	0.53
3:H:70:ARG:NH1	3:H:70:ARG:HG3	2.23	0.53
2:M:243:THR:HG22	2:M:247:ARG:NE	2.18	0.53
3:H:130:LYS:HE3	3:H:170:ASP:OD2	2.09	0.53
1:L:60:ASN:HB3	1:L:63:LEU:HD12	1.90	0.53
2:M:243:THR:HG21	2:M:247:ARG:NE	2.18	0.53
1:L:269:LEU:HD13	1:L:271:TRP:CH2	2.44	0.53
1:L:54:VAL:HG23	1:L:55:LEU:N	2.24	0.53
6:L:855:BPH:HH1	6:L:855:BPH:HBB3	1.90	0.52
2:M:13:ARG:HD3	2:M:35:PHE:CD2	2.44	0.52
2:M:76:LYS:C	2:M:76:LYS:HD3	2.30	0.52
3:H:37:ARG:HG2	3:H:37:ARG:HH11	1.75	0.52
1:L:8:LYS:HA	3:H:87:LEU:HD11	1.92	0.52
2:M:119:SER:HB2	8:M:859:SPO:H342	1.92	0.52
2:M:135:LEU:HB3	2:M:136:ARG:NH2	2.25	0.52
1:L:223:SER:O	2:M:44:ASN:HB2	2.09	0.52
3:H:140:PHE:HE2	3:H:174:GLN:HG2	1.74	0.52
3:H:163:LYS:HG3	3:H:163:LYS:O	2.08	0.52
1:L:170:ASN:HB3	1:L:173:HIS:HB3	1.90	0.52
2:M:65:MET:HB3	2:M:121:PHE:CD2	2.45	0.51
2:M:59:SER:OG	2:M:128:SER:OG	2.19	0.51
3:H:207:ALA:HA	3:H:241:LEU:HD23	1.92	0.51

*Continued on next page...*

*Continued from previous page...*

Atom-1	Atom-2	Interatomic distance (Å)	Clash overlap (Å)
6:L:855:BPH:H102	5:M:853:BCL:H193	1.91	0.51
1:L:179:PHE:CB	1:L:240:ALA:HB2	2.41	0.51
2:M:290:VAL:HG21	3:H:12:LEU:HD12	1.92	0.51
3:H:177:ARG:NH1	3:H:177:ARG:HG2	2.26	0.51
3:H:75:VAL:HA	3:H:76:PRO:C	2.30	0.51
3:H:159:GLU:HG3	3:H:160:ILE:N	2.26	0.50
5:L:851:BCL:H203	5:M:853:BCL:H102	1.92	0.50
2:M:109:LEU:HD22	2:M:114:LEU:HD13	1.93	0.50
3:H:89:ARG:HD3	3:H:91:ALA:O	2.12	0.50
2:M:11:GLN:HB2	3:H:144:ALA:HB3	1.93	0.50
2:M:211:GLY:HA3	2:M:272:MET:HE1	1.94	0.49
3:H:140:PHE:CE2	3:H:174:GLN:HG2	2.47	0.49
5:L:850:BCL:HAA2	5:L:850:BCL:HBD	1.94	0.49
2:M:300:ASN:O	2:M:301:HIS:HB2	2.13	0.49
1:L:66:VAL:HG12	1:L:86:TRP:HB2	1.94	0.49
2:M:5:ASN:ND2	3:H:194:GLN:HG3	2.27	0.49
1:L:12:PRO:HG3	3:H:97:PRO:HB3	1.95	0.49
1:L:269:LEU:HD13	1:L:271:TRP:CZ3	2.48	0.49
2:M:16:ALA:HB2	2:M:32:VAL:HG11	1.93	0.49
3:H:165:VAL:O	3:H:166:ASP:HB2	2.12	0.49
2:M:228:ARG:HG3	2:M:229:PHE:CE2	2.48	0.48
1:L:22:PHE:HA	1:L:24:PHE:CE2	2.48	0.48
2:M:241:ARG:HG3	2:M:245:ALA:HB3	1.95	0.48
3:H:233:ILE:O	3:H:237:VAL:HG23	2.12	0.48
3:H:105:MET:HE2	3:H:105:MET:HA	1.95	0.48
2:M:97:PRO:HG2	2:M:171:TRP:CB	2.40	0.48
2:M:204:LEU:HB3	2:M:279:THR:HG21	1.95	0.48
2:M:65:MET:HB3	2:M:121:PHE:CE2	2.48	0.48
2:M:148:TRP:CD2	9:M:3000:CDL:H511	2.48	0.48
1:L:241:VAL:HG21	6:L:855:BPH:HAC1	1.95	0.48
3:H:190:LEU:O	3:H:191:LEU:HD23	2.13	0.48
3:H:131:ILE:HD11	3:H:177:ARG:HD2	1.94	0.47
2:M:168:MET:HG3	2:M:173:GLU:HG3	1.96	0.47
7:M:857:U10:H201	7:M:857:U10:H222	1.64	0.47
1:L:60:ASN:HD22	1:L:63:LEU:CD1	2.28	0.47
1:L:54:VAL:CG2	1:L:55:LEU:N	2.77	0.47
1:L:139:MET:HB3	1:L:144:TYR:CE2	2.50	0.47
2:M:206:ILE:HD12	5:M:853:BCL:OBD	2.15	0.47
2:M:92:PHE:O	2:M:93:SER:HB2	2.15	0.47
3:H:105:MET:HE3	3:H:243:TYR:HD2	1.80	0.47
1:L:208:THR:HB	1:L:209:PRO:HD2	1.95	0.47

*Continued on next page...*

*Continued from previous page...*

Atom-1	Atom-2	Interatomic distance (Å)	Clash overlap (Å)
1:L:117:ILE:HB	1:L:118:PRO:CD	2.45	0.46
2:M:260:ALA:CB	10:H:1026:HOH:O	2.54	0.46
3:H:143:SER:O	3:H:144:ALA:HB2	2.16	0.46
1:L:255:TRP:HZ2	1:L:258:GLN:O	1.97	0.46
1:L:133:LEU:C	1:L:133:LEU:CD2	2.84	0.46
1:L:207:ARG:NH1	1:L:207:ARG:HG3	2.30	0.46
1:L:267:VAL:HG23	2:M:87:ARG:CD	2.45	0.46
2:M:256:MET:HE1	2:M:258:PHE:CZ	2.51	0.46
2:M:235:LEU:HA	2:M:238:ILE:HD12	1.98	0.46
7:M:857:U10:H251	7:M:857:U10:H271	1.77	0.46
3:H:154:ARG:CZ	3:H:202:ARG:HD2	2.46	0.46
2:M:80:TRP:O	2:M:82:PRO:HD3	2.16	0.46
1:L:190:HIS:CE1	1:L:230:HIS:CE1	3.04	0.46
2:M:157:TRP:CZ3	2:M:158:MET:HG2	2.50	0.46
2:M:30:SER:OG	2:M:50:ILE:HG22	2.16	0.46
3:H:37:ARG:HG2	3:H:37:ARG:NH1	2.31	0.45
1:L:60:ASN:HA	1:L:61:PRO:HD3	1.76	0.45
2:M:243:THR:CG2	2:M:247:ARG:NE	2.56	0.45
3:H:81:GLU:O	3:H:83:ARG:HG2	2.16	0.45
1:L:45:GLY:HA3	6:L:855:BPH:H9C1	1.98	0.45
2:M:228:ARG:HD3	3:H:195:MET:HE3	1.98	0.45
5:L:851:BCL:HAA2	5:L:851:BCL:HBD	1.98	0.45
1:L:177:ILE:O	1:L:177:ILE:HG22	2.17	0.45
1:L:52:SER:OG	1:L:66:VAL:HG22	2.17	0.45
2:M:239:ALA:O	3:H:73:LEU:HD22	2.17	0.45
1:L:166:ASN:OD1	1:L:168:HIS:HB2	2.17	0.45
2:M:164:ARG:HB3	2:M:165:PRO:HD3	1.99	0.45
2:M:243:THR:O	2:M:247:ARG:HG3	2.16	0.45
1:L:139:MET:HB3	1:L:144:TYR:CD2	2.51	0.45
5:L:850:BCL:HBB2	5:M:852:BCL:H111	1.98	0.45
3:H:219:ILE:HG21	3:H:225:VAL:HG12	1.98	0.45
7:M:857:U10:H71	7:M:857:U10:H1M1	1.78	0.45
3:H:146:LYS:HA	3:H:146:LYS:HD2	1.74	0.44
3:H:14:SER:O	3:H:17:ILE:HG22	2.16	0.44
1:L:230:HIS:CD2	2:M:223:ILE:HG21	2.52	0.44
2:M:296:VAL:O	2:M:299:GLN:HB2	2.17	0.44
1:L:175:ILE:O	1:L:178:SER:HB2	2.17	0.44
2:M:119:SER:HB3	8:M:859:SPO:H342	1.99	0.44
3:H:35:ASN:OD1	10:H:1026:HOH:O	2.21	0.44
1:L:216:PHE:O	1:L:220:VAL:HG22	2.17	0.44
2:M:267:ARG:HG2	2:M:267:ARG:HH11	1.83	0.44

*Continued on next page...*

*Continued from previous page...*

Atom-1	Atom-2	Interatomic distance (Å)	Clash overlap (Å)
1:L:219:LEU:O	2:M:132:ARG:NH1	2.50	0.44
1:L:181:PHE:HB3	6:M:854:BPH:CBB	2.48	0.44
1:L:272:TRP:HB2	2:M:87:ARG:HD3	1.99	0.44
2:M:229:PHE:HB2	2:M:244:ALA:HB2	1.98	0.44
3:H:168:TRP:HB2	3:H:178:PHE:HB2	2.00	0.44
2:M:243:THR:HG22	2:M:247:ARG:CG	2.44	0.44
3:H:148:PRO:O	3:H:149:ILE:C	2.56	0.44
1:L:173:HIS:O	1:L:177:ILE:HG13	2.18	0.44
1:L:181:PHE:HB3	6:M:854:BPH:HBB2	2.00	0.44
2:M:194:GLY:O	2:M:195:ASN:HB3	2.18	0.44
2:M:5:ASN:HD21	3:H:194:GLN:HG3	1.83	0.44
2:M:58:LEU:O	2:M:62:SER:CB	2.66	0.43
5:L:851:BCL:H2C	5:L:851:BCL:HBC2	1.90	0.43
3:H:194:GLN:H	3:H:194:GLN:CD	2.22	0.43
6:M:854:BPH:HMB1	6:M:854:BPH:HHB	1.77	0.43
1:L:8:LYS:HE2	1:L:9:TYR:CE2	2.53	0.43
2:M:211:GLY:HA3	2:M:272:MET:CE	2.48	0.43
2:M:60:LEU:HD12	2:M:60:LEU:HA	1.81	0.43
2:M:13:ARG:O	3:H:140:PHE:HA	2.18	0.43
1:L:217:ARG:HB3	2:M:49:PRO:O	2.18	0.43
3:H:112:ALA:HA	3:H:235:GLY:O	2.18	0.43
1:L:264:GLN:O	1:L:268:LYS:HG2	2.19	0.43
2:M:249:ALA:N	7:M:857:U10:H4M2	2.33	0.43
3:H:61:PRO:HA	3:H:76:PRO:HD2	2.01	0.43
2:M:148:TRP:CE2	9:M:3000:CDL:H511	2.54	0.43
5:L:851:BCL:CAA	5:M:853:BCL:HBC1	2.49	0.43
1:L:265:TRP:CG	1:L:266:TRP:N	2.86	0.43
2:M:187:ASN:HA	5:M:852:BCL:HBC1	2.00	0.43
1:L:196:SER:HA	2:M:145:HIS:ND1	2.34	0.43
6:L:855:BPH:HMB1	6:L:855:BPH:HHB	1.79	0.43
2:M:68:PHE:O	2:M:69:THR:C	2.58	0.43
3:H:124:ASP:OD2	3:H:128:HIS:HB2	2.19	0.42
2:M:265:ILE:HA	10:H:1026:HOH:O	2.17	0.42
1:L:2:LEU:HD21	1:L:10:ARG:CZ	2.49	0.42
2:M:25:ASN:HD22	2:M:28:ASN:ND2	2.18	0.42
2:M:151:LEU:HD23	9:M:3000:CDL:H781	2.01	0.42
2:M:59:SER:O	2:M:63:GLY:N	2.49	0.42
1:L:268:LYS:O	1:L:269:LEU:C	2.56	0.42
2:M:260:ALA:HB2	7:M:857:U10:H103	2.01	0.42
1:L:272:TRP:HA	1:L:275:ILE:HD12	2.01	0.42
1:L:116:HIS:CB	2:M:221:ALA:HB1	2.50	0.42

*Continued on next page...*



Continued from previous page...

Atom-1	Atom-2	Interatomic distance (Å)	Clash overlap (Å)
1:L:38:THR:HG22	1:L:99:SER:CB	2.50	0.42
2:M:94:LEU:HD21	2:M:115:TRP:CA	2.46	0.42
1:L:146:PHE:HB2	1:L:147:PRO:HD2	2.02	0.41
2:M:130:TRP:HD1	2:M:150:PHE:HD2	1.64	0.41
2:M:164:ARG:O	2:M:168:MET:HG2	2.20	0.41
5:M:852:BCL:HBD	5:M:852:BCL:HAA2	2.02	0.41
1:L:146:PHE:HB3	1:L:156:TRP:CD2	2.56	0.41
2:M:264:GLY:C	10:H:1026:HOH:O	2.58	0.41
1:L:207:ARG:HH11	1:L:207:ARG:HG3	1.84	0.41
1:L:262:TRP:O	1:L:265:TRP:HD1	2.03	0.41
2:M:9:GLN:OE1	3:H:198:VAL:HG23	2.20	0.41
2:M:114:LEU:HD12	2:M:117:ILE:HD12	2.02	0.41
1:L:182:THR:OG1	5:L:850:BCL:H42	2.21	0.41
3:H:24:LEU:O	3:H:28:ILE:HG13	2.21	0.41
2:M:170:SER:OG	2:M:172:SER:HB3	2.20	0.41
1:L:8:LYS:HE2	1:L:9:TYR:CZ	2.55	0.41
2:M:117:ILE:O	2:M:120:PHE:HB3	2.21	0.41
2:M:193:HIS:O	2:M:293:ASN:HA	2.20	0.41
1:L:60:ASN:HD22	1:L:63:LEU:CG	2.32	0.41
2:M:236:GLU:HG2	3:H:122:GLU:HG3	2.03	0.41
2:M:264:GLY:O	2:M:267:ARG:HB2	2.21	0.41
1:L:280:ASN:ND2	2:M:88:ASP:OD1	2.53	0.41
2:M:293:ASN:OD1	2:M:296:VAL:HG23	2.20	0.40
5:M:852:BCL:H2C	5:M:852:BCL:HBC2	1.95	0.40
2:M:61:PHE:C	2:M:63:GLY:N	2.75	0.40
1:L:229:ILE:HG23	1:L:230:HIS:ND1	2.37	0.40
2:M:235:LEU:O	2:M:238:ILE:HB	2.22	0.40
2:M:52:LEU:HD12	2:M:52:LEU:HA	1.82	0.40
2:M:58:LEU:O	2:M:62:SER:HB3	2.22	0.40
1:L:269:LEU:HA	1:L:270:PRO:HD3	1.90	0.40
1:L:272:TRP:HA	1:L:275:ILE:CD1	2.51	0.40
1:L:187:LEU:HD13	2:M:216:PHE:CD2	2.56	0.40

There are no symmetry-related clashes.

## 5.3 Torsion angles

### 5.3.1 Protein backbone

In the following table, the Percentiles column shows the percent Ramachandran outliers of the chain as a percentile score with respect to all X-ray entries followed by that with respect to entries

of similar resolution.

The Analysed column shows the number of residues for which the backbone conformation was analysed, and the total number of residues.

Mol	Chain	Analysed	Favoured	Allowed	Outliers	Percentiles	
1	L	279/281 (99%)	247 (88%)	30 (11%)	2 (1%)	25	53
2	M	300/307 (98%)	268 (89%)	29 (10%)	3 (1%)	18	43
3	H	234/260 (90%)	212 (91%)	21 (9%)	1 (0%)	38	66
All	All	813/848 (96%)	727 (89%)	80 (10%)	6 (1%)	25	53

All (6) Ramachandran outliers are listed below:

Mol	Chain	Res	Type
3	H	245	ALA
2	M	54	SER
2	M	30	SER
1	L	237	SER
1	L	200	PRO
2	M	32	VAL

### 5.3.2 Protein sidechains ⓘ

In the following table, the Percentiles column shows the percent sidechain outliers of the chain as a percentile score with respect to all X-ray entries followed by that with respect to entries of similar resolution.

The Analysed column shows the number of residues for which the sidechain conformation was analysed, and the total number of residues.

Mol	Chain	Analysed	Rotameric	Outliers	Percentiles	
1	L	220/220 (100%)	214 (97%)	6 (3%)	50	80
2	M	236/240 (98%)	229 (97%)	7 (3%)	46	76
3	H	191/208 (92%)	185 (97%)	6 (3%)	45	75
All	All	647/668 (97%)	628 (97%)	19 (3%)	48	77

All (19) residues with a non-rotameric sidechain are listed below:

Mol	Chain	Res	Type
1	L	38	THR
1	L	207	ARG
1	L	216	PHE

*Continued on next page...*

*Continued from previous page...*

Mol	Chain	Res	Type
1	L	247	CYS
1	L	271	TRP
1	L	272	TRP
2	M	2	GLU
2	M	76	LYS
2	M	86	LEU
2	M	122	MET
2	M	216	PHE
2	M	263	GLU
2	M	292	ASP
3	H	14	SER
3	H	94	GLU
3	H	106	LYS
3	H	206	ASN
3	H	225	VAL
3	H	231	ASP

Some sidechains can be flipped to improve hydrogen bonding and reduce clashes. All (6) such sidechains are listed below:

Mol	Chain	Res	Type
2	M	4	GLN
2	M	5	ASN
2	M	28	ASN
2	M	202	HIS
2	M	299	GLN
3	H	206	ASN

### 5.3.3 RNA [i](#)

There are no RNA molecules in this entry.

### 5.4 Non-standard residues in protein, DNA, RNA chains [i](#)

There are no non-standard protein/DNA/RNA residues in this entry.

### 5.5 Carbohydrates [i](#)

There are no carbohydrates in this entry.

## 5.6 Ligand geometry

Of 10 ligands modelled in this entry, 1 is monoatomic - leaving 9 for Mogul analysis.

In the following table, the Counts columns list the number of bonds (or angles) for which Mogul statistics could be retrieved, the number of bonds (or angles) that are observed in the model and the number of bonds (or angles) that are defined in the chemical component dictionary. The Link column lists molecule types, if any, to which the group is linked. The Z score for a bond length (or angle) is the number of standard deviations the observed value is removed from the expected value. A bond length (or angle) with  $|Z| > 2$  is considered an outlier worth inspection. RMSZ is the root-mean-square of all Z scores of the bond lengths (or angles).

Mol	Type	Chain	Res	Link	Bond lengths			Bond angles		
					Counts	RMSZ	# $ Z  > 2$	Counts	RMSZ	# $ Z  > 2$
5	BCL	L	850	2	55,74,74	1.59	10 (18%)	65,115,115	1.85	13 (20%)
5	BCL	L	851	1	55,74,74	1.57	8 (14%)	65,115,115	1.71	12 (18%)
6	BPH	L	855	-	65,70,70	1.30	10 (15%)	75,101,101	2.10	19 (25%)
9	CDL	M	3000	-	80,80,99	0.75	2 (2%)	82,92,111	0.98	5 (6%)
5	BCL	M	852	2	55,74,74	1.57	10 (18%)	65,115,115	1.84	14 (21%)
5	BCL	M	853	1	55,74,74	1.68	8 (14%)	65,115,115	1.97	16 (24%)
6	BPH	M	854	-	65,70,70	1.36	11 (16%)	75,101,101	1.77	17 (22%)
7	U10	M	857	-	48,48,63	2.22	14 (29%)	58,61,79	2.12	19 (32%)
8	SPO	M	859	-	40,41,41	3.60	26 (65%)	49,50,50	2.69	17 (34%)

In the following table, the Chirals column lists the number of chiral outliers, the number of chiral centers analysed, the number of these observed in the model and the number defined in the chemical component dictionary. Similar counts are reported in the Torsion and Rings columns. '-' means no outliers of that kind were identified.

Mol	Type	Chain	Res	Link	Chirals	Torsions	Rings
5	BCL	L	850	2	-	0/37/137/137	0/0/9/9
5	BCL	L	851	1	-	0/37/137/137	0/0/9/9
6	BPH	L	855	-	-	0/54/105/105	0/1/6/6
9	CDL	M	3000	-	-	0/91/91/110	0/0/0/0
5	BCL	M	852	2	-	0/37/137/137	0/0/9/9
5	BCL	M	853	1	-	0/37/137/137	0/0/9/9
6	BPH	M	854	-	-	0/54/105/105	0/1/6/6
7	U10	M	857	-	-	0/45/69/87	0/1/1/1
8	SPO	M	859	-	-	0/47/47/47	0/0/0/0

All (99) bond length outliers are listed below:

Mol	Chain	Res	Type	Atoms	Z	Observed(Å)	Ideal(Å)
7	M	857	U10	C7-C8	-3.68	1.45	1.50
8	M	859	SPO	C4-C5	-3.04	1.44	1.50
6	L	855	BPH	C3D-CAD	-2.93	1.40	1.47
6	M	854	BPH	C3D-CAD	-2.64	1.41	1.47
6	L	855	BPH	C1B-C2B	-2.59	1.40	1.45
8	M	859	SPO	C31-C32	-2.54	1.41	1.50
8	M	859	SPO	C11-C12	-2.53	1.40	1.45
8	M	859	SPO	C25-C23	-2.43	1.40	1.45
6	M	854	BPH	C3A-C2A	-2.38	1.47	1.54
6	M	854	BPH	C1B-C2B	-2.29	1.40	1.45
5	L	850	BCL	C3A-C2A	-2.24	1.48	1.54
6	L	855	BPH	C3A-C2A	-2.22	1.48	1.54
6	L	855	BPH	O2A-CGA	-2.14	1.27	1.33
5	M	852	BCL	C3C-C4C	-2.11	1.48	1.51
5	M	853	BCL	C3A-C2A	-2.03	1.48	1.54
6	M	854	BPH	C5-C3	2.00	1.55	1.51
8	M	859	SPO	C26-C27	2.01	1.49	1.43
5	L	850	BCL	CBB-CAB	2.03	1.55	1.49
5	L	851	BCL	CBB-CAB	2.09	1.56	1.49
6	M	854	BPH	CHC-C4B	2.13	1.45	1.40
6	L	855	BPH	CHC-C4B	2.16	1.45	1.40
5	L	851	BCL	C3B-CAB	2.19	1.55	1.49
7	M	857	U10	C8-C9	2.23	1.38	1.33
5	M	853	BCL	OBD-CAD	2.24	1.25	1.22
5	M	852	BCL	CHC-C1C	2.24	1.36	1.33
5	M	852	BCL	CBB-CAB	2.27	1.56	1.49
8	M	859	SPO	C24-C23	2.33	1.55	1.50
5	L	850	BCL	CHC-C1C	2.35	1.36	1.33
9	M	3000	CDL	CB3-CB4	2.39	1.57	1.50
6	M	854	BPH	C3B-CAB	2.40	1.54	1.46
9	M	3000	CDL	OA8-CA7	2.42	1.40	1.33
8	M	859	SPO	C29-C28	2.50	1.57	1.50
6	M	854	BPH	CMD-C2D	2.51	1.56	1.51
6	L	855	BPH	C3B-C2B	2.52	1.45	1.38
5	M	852	BCL	CMD-C2D	2.58	1.57	1.51
7	M	857	U10	C38-C39	2.61	1.40	1.32
6	M	854	BPH	C3B-C2B	2.64	1.45	1.38
8	M	859	SPO	C9-C7	2.64	1.39	1.35
7	M	857	U10	O4-C4	2.65	1.43	1.36
5	L	851	BCL	C2-C3	2.66	1.39	1.33
6	L	855	BPH	CMD-C2D	2.70	1.57	1.51
8	M	859	SPO	C22-C23	2.73	1.39	1.35
7	M	857	U10	C23-C24	2.74	1.39	1.33

Continued on next page...

*Continued from previous page...*

Mol	Chain	Res	Type	Atoms	Z	Observed(Å)	Ideal(Å)
5	L	850	BCL	CMB-C2B	2.78	1.57	1.51
8	M	859	SPO	C35-C33	2.80	1.57	1.51
8	M	859	SPO	O1-C1	2.81	1.58	1.41
7	M	857	U10	O3-C3	2.83	1.43	1.36
5	M	852	BCL	CMB-C2B	2.88	1.57	1.51
5	M	852	BCL	C3B-CAB	2.90	1.56	1.49
5	M	853	BCL	CMB-C2B	2.90	1.57	1.51
5	L	850	BCL	OBD-CAD	2.93	1.26	1.22
5	L	851	BCL	CMB-C2B	3.01	1.57	1.51
6	L	855	BPH	C2-C3	3.02	1.40	1.33
5	M	853	BCL	C3B-CAB	3.03	1.57	1.49
6	M	854	BPH	CMB-C2B	3.11	1.57	1.50
8	M	859	SPO	C10-C9	3.12	1.53	1.43
5	L	850	BCL	C3B-CAB	3.14	1.57	1.49
5	L	851	BCL	CHC-C1C	3.17	1.37	1.33
6	M	854	BPH	C3D-C2D	3.23	1.46	1.39
8	M	859	SPO	C8-C7	3.24	1.57	1.50
7	M	857	U10	C13-C14	3.25	1.41	1.33
7	M	857	U10	C28-C29	3.28	1.41	1.33
8	M	859	SPO	C37-C38	3.30	1.42	1.32
5	M	852	BCL	C2-C3	3.32	1.41	1.33
6	L	855	BPH	CMB-C2B	3.33	1.58	1.50
7	M	857	U10	C33-C34	3.35	1.41	1.33
7	M	857	U10	C18-C19	3.36	1.41	1.33
6	L	855	BPH	C3D-C2D	3.48	1.47	1.39
8	M	859	SPO	O1-CM1	3.50	1.54	1.43
6	M	854	BPH	C2-C3	3.52	1.41	1.33
8	M	859	SPO	C32-C33	3.56	1.41	1.33
5	L	850	BCL	C2-C3	3.61	1.42	1.33
7	M	857	U10	C7-C6	3.65	1.57	1.51
5	L	851	BCL	C3B-C2B	3.72	1.47	1.39
7	M	857	U10	C6-C5	3.72	1.57	1.46
5	M	852	BCL	C3B-C2B	3.87	1.48	1.39
5	M	853	BCL	C3B-C2B	4.14	1.48	1.39
5	L	850	BCL	C3B-C2B	4.16	1.48	1.39
5	L	850	BCL	CHB-C4A	4.17	1.38	1.33
5	M	852	BCL	CHB-C4A	4.28	1.39	1.33
8	M	859	SPO	C19-C17	4.34	1.41	1.35
5	M	853	BCL	C3D-C2D	4.35	1.49	1.39
8	M	859	SPO	C15-C14	4.43	1.57	1.43
7	M	857	U10	C4-C3	4.52	1.54	1.35
5	M	853	BCL	C2-C3	4.52	1.44	1.33

*Continued on next page...*

*Continued from previous page...*

Mol	Chain	Res	Type	Atoms	Z	Observed(Å)	Ideal(Å)
8	M	859	SPO	C13-C12	4.56	1.60	1.50
5	M	852	BCL	C3D-C2D	4.66	1.50	1.39
5	L	850	BCL	C3D-C2D	4.76	1.50	1.39
5	L	851	BCL	C3D-C2D	4.85	1.50	1.39
8	M	859	SPO	C26-C25	5.06	1.47	1.34
8	M	859	SPO	C14-C12	5.13	1.42	1.35
5	L	851	BCL	CHB-C4A	5.26	1.40	1.33
8	M	859	SPO	C27-C28	5.73	1.40	1.34
5	M	853	BCL	CHB-C4A	5.76	1.40	1.33
8	M	859	SPO	C21-C20	5.89	1.51	1.35
8	M	859	SPO	C10-C11	7.09	1.52	1.34
8	M	859	SPO	C6-C5	7.09	1.50	1.31
7	M	857	U10	C6-C1	7.82	1.52	1.35
8	M	859	SPO	C15-C16	9.43	1.58	1.34

All (132) bond angle outliers are listed below:

Mol	Chain	Res	Type	Atoms	Z	Observed(°)	Ideal(°)
8	M	859	SPO	C25-C23-C22	-11.51	101.28	118.94
5	L	850	BCL	CMB-C2B-C1B	-6.68	118.20	128.46
5	M	852	BCL	CMB-C2B-C1B	-6.43	118.58	128.46
5	L	851	BCL	CMB-C2B-C1B	-6.32	118.75	128.46
5	M	853	BCL	CMB-C2B-C1B	-6.13	119.04	128.46
5	M	853	BCL	CAA-C2A-C1A	-5.93	92.53	111.97
8	M	859	SPO	C18-C17-C19	-5.93	114.62	122.92
6	L	855	BPH	C4D-C3D-CAD	-5.73	104.50	107.78
6	M	854	BPH	C4D-C3D-CAD	-5.11	104.86	107.78
5	L	850	BCL	CAA-C2A-C1A	-5.03	95.48	111.97
8	M	859	SPO	C20-C21-C22	-4.97	112.86	123.46
8	M	859	SPO	C24-C23-C22	-4.89	116.07	122.92
7	M	857	U10	C10-C9-C8	-4.28	112.28	123.69
7	M	857	U10	C15-C14-C13	-4.20	112.47	123.69
6	L	855	BPH	C5-C3-C2	-3.97	112.98	121.10
6	L	855	BPH	O1D-CGD-CBD	-3.67	118.00	124.60
5	M	852	BCL	OBD-CAD-C3D	-3.64	121.33	128.03
6	M	854	BPH	O1D-CGD-CBD	-3.58	118.16	124.60
8	M	859	SPO	C10-C9-C7	-3.48	122.34	127.31
6	L	855	BPH	CMB-C2B-C1B	-3.46	119.66	125.04
5	L	851	BCL	OBD-CAD-C3D	-3.45	121.67	128.03
8	M	859	SPO	C15-C14-C12	-3.41	122.44	127.31
6	M	854	BPH	CHC-C4B-NB	-3.40	118.44	124.97
6	M	854	BPH	CMB-C2B-C1B	-3.38	119.77	125.04

*Continued on next page...*

*Continued from previous page...*

Mol	Chain	Res	Type	Atoms	Z	Observed(°)	Ideal(°)
6	L	855	BPH	CHC-C4B-NB	-3.38	118.47	124.97
6	L	855	BPH	C7-C6-C5	-3.37	103.74	113.11
7	M	857	U10	C7-C6-C1	-3.34	116.89	123.47
5	M	853	BCL	OBD-CAD-C3D	-3.33	121.89	128.03
8	M	859	SPO	C11-C12-C14	-3.31	113.87	118.94
5	M	853	BCL	CAC-C3C-C2C	-3.23	106.11	114.24
7	M	857	U10	C35-C34-C33	-3.15	115.29	123.69
7	M	857	U10	C25-C24-C23	-3.11	115.38	123.69
8	M	859	SPO	C4-C5-C6	-3.10	120.11	124.57
5	M	853	BCL	O1D-CGD-CBD	-2.96	119.28	124.60
5	M	852	BCL	CHA-C1A-NA	-2.92	119.39	126.18
8	M	859	SPO	C15-C16-C17	-2.92	118.21	126.42
8	M	859	SPO	C2-C1-C4	-2.88	106.00	110.90
9	M	3000	CDL	CB6-CB4-CB3	-2.77	105.60	111.86
7	M	857	U10	O5-C5-C4	-2.73	115.14	120.95
6	L	855	BPH	CBB-CAB-C3B	-2.67	114.81	120.52
5	L	850	BCL	OBD-CAD-C3D	-2.64	123.15	128.03
5	M	852	BCL	C15-C13-C12	-2.64	99.41	112.10
5	L	851	BCL	CHA-C1A-NA	-2.63	120.07	126.18
7	M	857	U10	C8-C7-C6	-2.59	104.58	111.85
5	L	850	BCL	O1D-CGD-CBD	-2.59	119.95	124.60
6	M	854	BPH	CBB-CAB-C3B	-2.55	115.07	120.52
7	M	857	U10	C20-C19-C18	-2.53	116.93	123.69
6	L	855	BPH	C1C-NC-C4C	-2.32	108.45	110.54
9	M	3000	CDL	CA6-CA4-CA3	-2.24	106.81	111.86
5	L	850	BCL	CHA-C1A-NA	-2.17	121.15	126.18
5	M	852	BCL	CGD-CBD-CAD	-2.16	103.47	110.71
5	M	853	BCL	CHA-C1A-NA	-2.16	121.17	126.18
8	M	859	SPO	C8-C7-C6	-2.12	114.71	118.10
6	M	854	BPH	C1C-NC-C4C	-2.08	108.67	110.54
6	M	854	BPH	OBD-CAD-C3D	-2.05	124.25	128.03
5	M	853	BCL	CMA-C3A-C2A	-2.01	105.61	113.77
8	M	859	SPO	C34-C33-C35	-2.00	111.81	115.29
5	M	852	BCL	O2A-CGA-CBA	2.01	117.75	111.90
6	M	854	BPH	C2B-C1B-NB	2.02	112.81	109.82
6	L	855	BPH	CAC-C3C-C4C	2.05	117.95	112.67
5	L	851	BCL	O2A-CGA-CBA	2.06	117.88	111.90
6	L	855	BPH	C2A-C3A-C4A	2.07	105.47	101.33
5	L	851	BCL	C2C-C3C-C4C	2.10	104.48	101.34
7	M	857	U10	C35-C34-C36	2.11	118.94	115.29
5	L	850	BCL	O2A-CGA-CBA	2.15	118.15	111.90
5	M	853	BCL	C2C-C3C-C4C	2.17	104.59	101.34

*Continued on next page...*



*Continued from previous page...*

Mol	Chain	Res	Type	Atoms	Z	Observed(°)	Ideal(°)
8	M	859	SPO	C13-C12-C11	2.17	121.56	118.10
7	M	857	U10	C21-C19-C18	2.18	125.56	121.10
5	M	852	BCL	C1-O2A-CGA	2.19	122.02	116.77
6	L	855	BPH	C6-C7-C8	2.20	122.96	115.73
6	M	854	BPH	CMB-C2B-C3B	2.24	133.29	127.86
7	M	857	U10	C36-C34-C33	2.28	125.77	121.10
7	M	857	U10	C30-C29-C31	2.29	119.27	115.29
6	L	855	BPH	CED-O2D-CGD	2.31	121.38	115.97
8	M	859	SPO	O1-C1-C4	2.33	112.55	106.29
9	M	3000	CDL	C52-C51-CB5	2.35	122.16	113.58
6	M	854	BPH	C6-C5-C3	2.35	117.99	112.66
7	M	857	U10	C4M-O4-C4	2.36	124.89	116.44
5	L	851	BCL	C4B-CHC-C1C	2.36	134.79	130.12
5	L	850	BCL	C2A-C1A-CHA	2.37	128.12	123.92
6	M	854	BPH	C2A-C3A-C4A	2.38	106.08	101.33
5	M	852	BCL	C2A-C1A-CHA	2.38	128.14	123.92
6	L	855	BPH	CMB-C2B-C3B	2.39	133.65	127.86
7	M	857	U10	C11-C12-C13	2.41	120.24	111.97
5	M	852	BCL	C3D-CAD-CBD	2.45	111.06	107.60
5	L	851	BCL	C3D-CAD-CBD	2.48	111.10	107.60
5	L	851	BCL	C6-C5-C3	2.50	118.31	112.66
5	L	851	BCL	C2A-C1A-CHA	2.50	128.34	123.92
5	L	850	BCL	C4B-CHC-C1C	2.50	135.07	130.12
6	M	854	BPH	CED-O2D-CGD	2.52	121.88	115.97
8	M	859	SPO	C18-C17-C16	2.54	122.14	118.10
5	M	853	BCL	C4B-CHC-C1C	2.57	135.21	130.12
5	M	853	BCL	C6-C5-C3	2.61	118.56	112.66
5	M	853	BCL	O2D-CGD-CBD	2.65	116.04	111.30
6	L	855	BPH	C3D-CAD-CBD	2.71	111.43	107.60
5	L	850	BCL	C6-C5-C3	2.73	118.85	112.66
9	M	3000	CDL	CB4-OB6-CB5	2.77	124.42	117.88
5	M	853	BCL	O2A-CGA-CBA	2.77	119.97	111.90
8	M	859	SPO	C16-C17-C19	2.80	123.24	118.94
6	M	854	BPH	C3D-CAD-CBD	2.81	111.57	107.60
5	M	852	BCL	C4B-CHC-C1C	2.86	135.78	130.12
7	M	857	U10	C25-C24-C26	3.17	120.78	115.29
5	L	850	BCL	C2A-C3A-C4A	3.25	107.12	101.87
8	M	859	SPO	C8-C7-C9	3.29	127.53	122.92
5	M	852	BCL	C2A-C3A-C4A	3.29	107.18	101.87
6	M	854	BPH	C4-C3-C5	3.30	121.01	115.29
6	M	854	BPH	O2D-CGD-CBD	3.39	117.35	111.30
5	L	850	BCL	CBA-CAA-C2A	3.46	124.16	113.80

*Continued on next page...*

*Continued from previous page...*

Mol	Chain	Res	Type	Atoms	Z	Observed(°)	Ideal(°)
6	L	855	BPH	O2D-CGD-CBD	3.48	117.52	111.30
5	M	853	BCL	C2A-C3A-C4A	3.51	107.54	101.87
5	M	853	BCL	CBA-CAA-C2A	3.82	125.22	113.80
5	L	850	BCL	CED-O2D-CGD	3.85	125.00	115.97
5	L	851	BCL	CED-O2D-CGD	3.89	125.09	115.97
5	M	853	BCL	CED-O2D-CGD	3.99	125.32	115.97
7	M	857	U10	C11-C9-C8	4.01	129.31	121.10
5	L	851	BCL	C2A-C3A-C4A	4.02	108.37	101.87
9	M	3000	CDL	OB8-CB6-CB4	4.13	119.04	108.66
7	M	857	U10	C15-C14-C16	4.26	122.68	115.29
5	M	852	BCL	CED-O2D-CGD	4.54	126.60	115.97
5	L	851	BCL	CMB-C2B-C3B	4.54	133.31	124.89
5	M	853	BCL	CMB-C2B-C3B	4.59	133.40	124.89
5	M	852	BCL	CMB-C2B-C3B	4.72	133.65	124.89
7	M	857	U10	C7-C8-C9	4.79	134.72	126.71
5	M	852	BCL	C6-C5-C3	4.90	123.75	112.66
5	L	850	BCL	CMB-C2B-C3B	4.91	134.01	124.89
6	M	854	BPH	C3C-C4C-NC	5.15	112.82	107.97
6	L	855	BPH	C4-C3-C5	5.17	124.26	115.29
7	M	857	U10	C7-C6-C5	5.25	125.19	118.47
6	L	855	BPH	C3C-C4C-NC	5.41	113.07	107.97
6	L	855	BPH	C6-C5-C3	6.10	126.49	112.66
6	M	854	BPH	C1-O2A-CGA	6.13	131.49	116.77
6	L	855	BPH	C1-O2A-CGA	6.58	132.56	116.77

There are no chirality outliers.

There are no torsion outliers.

There are no ring outliers.

9 monomers are involved in 38 short contacts:

Mol	Chain	Res	Type	Clashes	Symm-Clashes
5	L	850	BCL	4	0
5	L	851	BCL	5	0
6	L	855	BPH	6	0
9	M	3000	CDL	3	0
5	M	852	BCL	6	0
5	M	853	BCL	7	0
6	M	854	BPH	4	0
7	M	857	U10	6	0
8	M	859	SPO	4	0

## 5.7 Other polymers [i](#)

There are no such residues in this entry.

## 5.8 Polymer linkage issues [i](#)

There are no chain breaks in this entry.

## 6 Fit of model and data ⓘ

### 6.1 Protein, DNA and RNA chains ⓘ

EDS was not executed - this section is therefore empty.

### 6.2 Non-standard residues in protein, DNA, RNA chains ⓘ

EDS was not executed - this section is therefore empty.

### 6.3 Carbohydrates ⓘ

EDS was not executed - this section is therefore empty.

### 6.4 Ligands ⓘ

EDS was not executed - this section is therefore empty.

### 6.5 Other polymers ⓘ

EDS was not executed - this section is therefore empty.