



Full wwPDB X-ray Structure Validation Report ⓘ

Feb 14, 2017 – 05:21 pm GMT

PDB ID : 2JI9
Title : X-RAY STRUCTURE OF OXALYL-COA DECARBOXYLASE IN COMPLEX WITH 3-DEAZA-THDP
Authors : Berthold, C.L.; Toyota, C.G.; Moussatche, P.; Wood, M.D.; Leeper, F.; Richards, N.G.J.; Lindqvist, Y.
Deposited on : 2007-02-26
Resolution : 2.20 Å(reported)

This is a Full wwPDB X-ray Structure Validation Report for a publicly released PDB entry.

We welcome your comments at validation@mail.wwpdb.org

A user guide is available at

<http://wwpdb.org/validation/2016/XrayValidationReportHelp>

with specific help available everywhere you see the ⓘ symbol.

The following versions of software and data (see [references ⓘ](#)) were used in the production of this report:

MolProbity : 4.02b-467
Mogul : 1.7.2 (RC1), CSD as538be (2017)
Xtriage (Phenix) : 1.9-1692
EDS : trunk28620
Percentile statistics : 20161228.v01 (using entries in the PDB archive December 28th 2016)
Refmac : 5.8.0135
CCP4 : 6.5.0
Ideal geometry (proteins) : Engh & Huber (2001)
Ideal geometry (DNA, RNA) : Parkinson et al. (1996)
Validation Pipeline (wwPDB-VP) : recalc28949

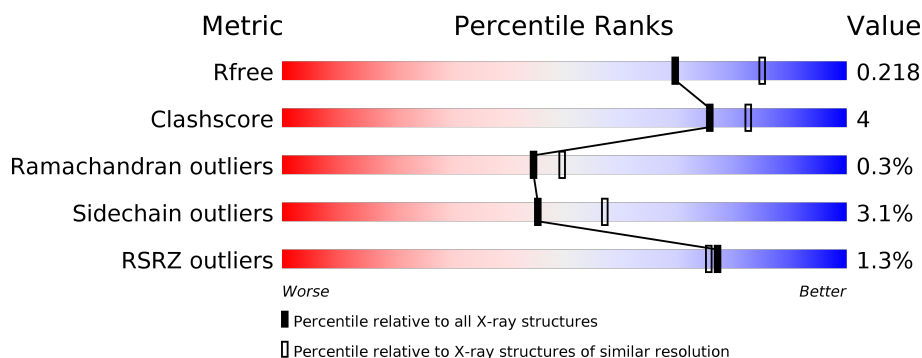
1 Overall quality at a glance ⓘ

The following experimental techniques were used to determine the structure:

X-RAY DIFFRACTION

The reported resolution of this entry is 2.20 Å.

Percentile scores (ranging between 0-100) for global validation metrics of the entry are shown in the following graphic. The table shows the number of entries on which the scores are based.



Metric	Whole archive (#Entries)	Similar resolution (#Entries, resolution range(Å))
R_{free}	100719	4002 (2.20-2.20)
Clashscore	112137	4730 (2.20-2.20)
Ramachandran outliers	110173	4656 (2.20-2.20)
Sidechain outliers	110143	4657 (2.20-2.20)
RSRZ outliers	101464	4033 (2.20-2.20)

The table below summarises the geometric issues observed across the polymeric chains and their fit to the electron density. The red, orange, yellow and green segments on the lower bar indicate the fraction of residues that contain outliers for ≥ 3 , 2, 1 and 0 types of geometric quality criteria. A grey segment represents the fraction of residues that are not modelled. The numeric value for each fraction is indicated below the corresponding segment, with a dot representing fractions $\leq 5\%$. The upper red bar (where present) indicates the fraction of residues that have poor fit to the electron density. The numeric value is given above the bar.

Mol	Chain	Length	Quality of chain
1	A	568	<div> <div style="width: 100%; height: 10px; position: relative;"> <div style="position: absolute; top: -10px; left: 0; width: 100%; text-align: center;">%</div> <div style="position: absolute; top: 10px; left: 0; width: 100%; text-align: center;">87% 9% . .</div> </div> </div>
1	B	568	<div> <div style="width: 100%; height: 10px; position: relative;"> <div style="position: absolute; top: -10px; left: 0; width: 100%; text-align: center;">%</div> <div style="position: absolute; top: 10px; left: 0; width: 100%; text-align: center;">87% 9% .</div> </div> </div>

The following table lists non-polymeric compounds, carbohydrate monomers and non-standard residues in protein, DNA, RNA chains that are outliers for geometric or electron-density-fit criteria:

Mol	Type	Chain	Res	Chirality	Geometry	Clashes	Electron density
5	B3P	A	1557	-	-	-	X
5	B3P	B	1557	-	-	-	X

2 Entry composition [i](#)

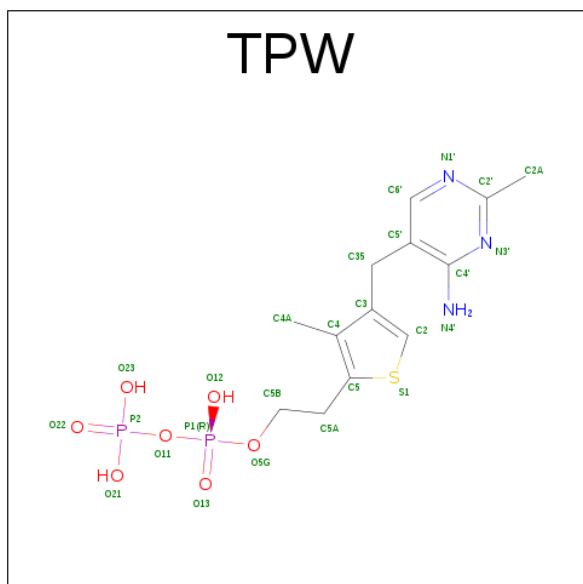
There are 6 unique types of molecules in this entry. The entry contains 8956 atoms, of which 0 are hydrogens and 0 are deuteriums.

In the tables below, the ZeroOcc column contains the number of atoms modelled with zero occupancy, the AltConf column contains the number of residues with at least one atom in alternate conformation and the Trace column contains the number of residues modelled with at most 2 atoms.

- Molecule 1 is a protein called OXALYL-COA DECARBOXYLASE.

Mol	Chain	Residues	Atoms					ZeroOcc	AltConf	Trace
1	A	547	Total	C	N	O	S	0	2	0
			4094	2577	708	773	36			
1	B	547	Total	C	N	O	S	0	3	0
			4100	2581	708	775	36			

- Molecule 2 is 2-{4-[(4-AMINO-2-METHYLPYRIMIDIN-5-YL)METHYL]-3-METHYLTHIOPHEN-2-YL}ETHYL TRIHYDROGEN DIPHOSPHATE (three-letter code: TPW) (formula: $C_{13}H_{19}N_3O_7P_2S$).

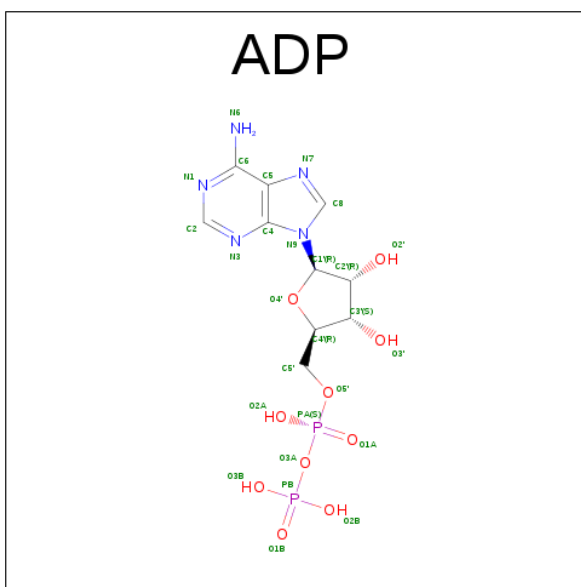


Mol	Chain	Residues	Atoms					ZeroOcc	AltConf
2	A	1	Total	C	N	O	P S	0	0
			26	13	3	7	2 1		
2	B	1	Total	C	N	O	P S	0	0
			26	13	3	7	2 1		

- Molecule 3 is MAGNESIUM ION (three-letter code: MG) (formula: Mg).

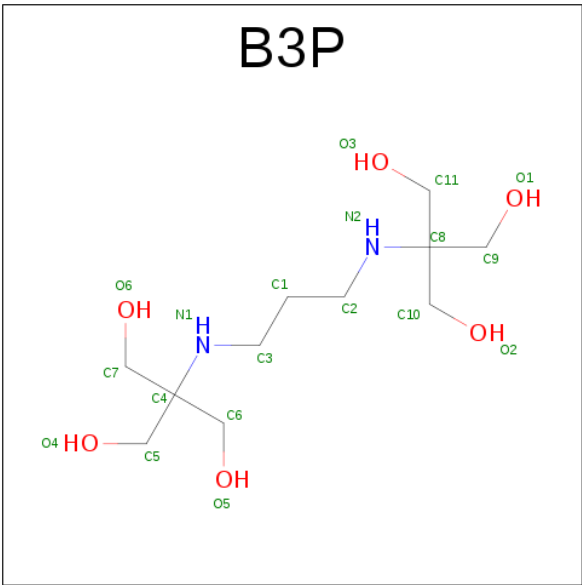
Mol	Chain	Residues	Atoms	ZeroOcc	AltConf
3	B	1	Total Mg 1 1	0	0
3	A	1	Total Mg 1 1	0	0

- Molecule 4 is ADENOSINE-5'-DIPHOSPHATE (three-letter code: ADP) (formula: $\text{C}_{10}\text{H}_{15}\text{N}_5\text{O}_{10}\text{P}_2$).



Mol	Chain	Residues	Atoms				ZeroOcc	AltConf	
4	A	1	Total 27	C 10	N 5	O 10	P 2	0	0
4	B	1	Total 27	C 10	N 5	O 10	P 2	0	0

- Molecule 5 is 2-[3-(2-HYDROXY-1,1-DIHYDROXYMETHYL-ETHYLAMINO)-PROPYL AMINO]-2-HYDROXYMETHYL-PROPANE-1,3-DIOL (three-letter code: B3P) (formula: $C_{11}H_{26}N_2O_6$).



Mol	Chain	Residues	Atoms				ZeroOcc	AltConf
5	A	1	Total	C	N	O	0	0
			19	11	2	6		
5	B	1	Total	C	N	O	0	0
			19	11	2	6		

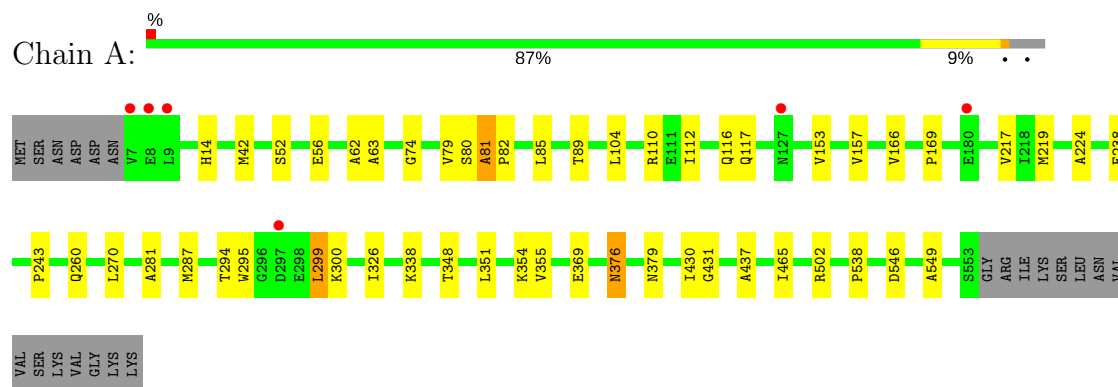
- Molecule 6 is water.

Mol	Chain	Residues	Atoms		ZeroOcc	AltConf
6	A	303	Total	O	0	0
			303	303		
6	B	313	Total	O	0	0
			313	313		

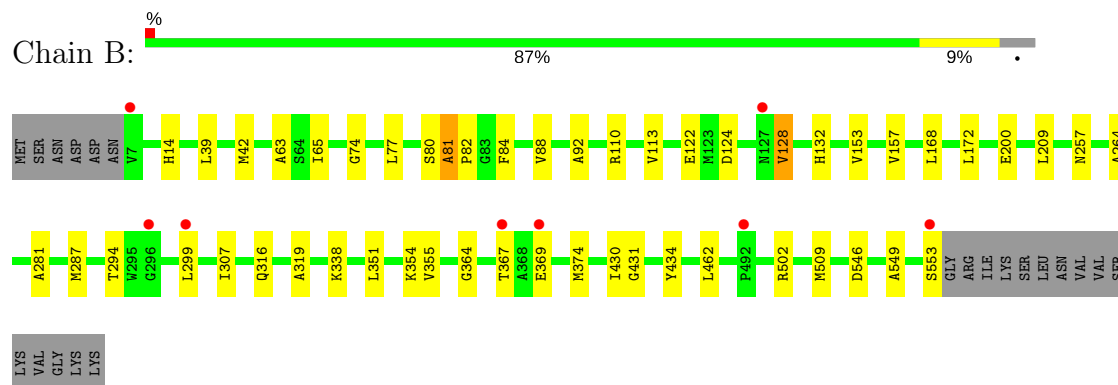
3 Residue-property plots [i](#)

These plots are drawn for all protein, RNA and DNA chains in the entry. The first graphic for a chain summarises the proportions of the various outlier classes displayed in the second graphic. The second graphic shows the sequence view annotated by issues in geometry and electron density. Residues are color-coded according to the number of geometric quality criteria for which they contain at least one outlier: green = 0, yellow = 1, orange = 2 and red = 3 or more. A red dot above a residue indicates a poor fit to the electron density ($RSRZ > 2$). Stretches of 2 or more consecutive residues without any outlier are shown as a green connector. Residues present in the sample, but not in the model, are shown in grey.

• Molecule 1: OXALYL-COA DECARBOXYLASE



• Molecule 1: OXALYL-COA DECARBOXYLASE



4 Data and refinement statistics

Property	Value	Source
Space group	P 31 2 1	Depositor
Cell constants a, b, c, α , β , γ	127.72Å 127.72Å 152.42Å 90.00° 90.00° 120.00°	Depositor
Resolution (Å)	30.00 – 2.20 63.86 – 2.20	Depositor EDS
% Data completeness (in resolution range)	97.8 (30.00-2.20) 97.8 (63.86-2.20)	Depositor EDS
R_{merge}	0.14	Depositor
R_{sym}	(Not available)	Depositor
$\langle I/\sigma(I) \rangle$ ¹	2.73 (at 2.20Å)	Xtriage
Refinement program	REFMAC 5.2.0019	Depositor
R, R_{free}	0.177 , 0.215 0.183 , 0.218	Depositor DCC
R_{free} test set	3416 reflections (5.01%)	DCC
Wilson B-factor (Å ²)	31.4	Xtriage
Anisotropy	0.908	Xtriage
Bulk solvent k_{sol} (e/Å ³), B_{sol} (Å ²)	0.33 , 41.9	EDS
L-test for twinning ²	$\langle L \rangle = 0.49$, $\langle L^2 \rangle = 0.32$	Xtriage
Estimated twinning fraction	0.026 for -h,-k,l	Xtriage
F_o, F_c correlation	0.95	EDS
Total number of atoms	8956	wwPDB-VP
Average B, all atoms (Å ²)	39.0	wwPDB-VP

Xtriage's analysis on translational NCS is as follows: *The largest off-origin peak in the Patterson function is 2.33% of the height of the origin peak. No significant pseudotranslation is detected.*

¹Intensities estimated from amplitudes.

²Theoretical values of $\langle |L| \rangle$, $\langle L^2 \rangle$ for acentric reflections are 0.5, 0.333 respectively for untwinned datasets, and 0.375, 0.2 for perfectly twinned datasets.

5 Model quality [i](#)

5.1 Standard geometry [i](#)

Bond lengths and bond angles in the following residue types are not validated in this section: TPW, MG, B3P, ADP

The Z score for a bond length (or angle) is the number of standard deviations the observed value is removed from the expected value. A bond length (or angle) with $|Z| > 5$ is considered an outlier worth inspection. RMSZ is the root-mean-square of all Z scores of the bond lengths (or angles).

Mol	Chain	Bond lengths		Bond angles	
		RMSZ	# Z >5	RMSZ	# Z >5
1	A	0.40	0/4174	0.57	0/5652
1	B	0.41	0/4183	0.58	0/5664
All	All	0.41	0/8357	0.58	0/11316

There are no bond length outliers.

There are no bond angle outliers.

There are no chirality outliers.

There are no planarity outliers.

5.2 Too-close contacts [i](#)

In the following table, the Non-H and H(model) columns list the number of non-hydrogen atoms and hydrogen atoms in the chain respectively. The H(added) column lists the number of hydrogen atoms added and optimized by MolProbity. The Clashes column lists the number of clashes within the asymmetric unit, whereas Symm-Clashes lists symmetry related clashes.

Mol	Chain	Non-H	H(model)	H(added)	Clashes	Symm-Clashes
1	A	4094	0	4124	28	0
1	B	4100	0	4130	30	0
2	A	26	0	16	0	0
2	B	26	0	16	1	0
3	A	1	0	0	0	0
3	B	1	0	0	0	0
4	A	27	0	12	0	0
4	B	27	0	12	1	0
5	A	19	0	26	0	0
5	B	19	0	26	2	0
6	A	303	0	0	1	0

Continued on next page...

Continued from previous page...

Mol	Chain	Non-H	H(model)	H(added)	Clashes	Symm-Clashes
6	B	313	0	0	1	0
All	All	8956	0	8362	60	0

The all-atom clashscore is defined as the number of clashes found per 1000 atoms (including hydrogen atoms). The all-atom clashscore for this structure is 4.

All (60) close contacts within the same asymmetric unit are listed below, sorted by their clash magnitude.

Atom-1	Atom-2	Interatomic distance (Å)	Clash overlap (Å)
1:B:14:HIS:CE1	1:B:42:MET:CE	2.70	0.74
1:B:14:HIS:CE1	1:B:42:MET:HE3	2.25	0.70
1:A:376:ASN:C	1:A:376:ASN:HD22	1.96	0.69
1:B:124:ASP:O	1:B:128:VAL:HG23	1.93	0.68
1:A:153:VAL:O	1:A:157:VAL:HG22	1.96	0.66
1:B:281:ALA:HB1	1:B:287:MET:HE1	1.78	0.66
1:B:14:HIS:NE2	1:B:42:MET:HE3	2.12	0.65
1:B:81:ALA:HB3	1:B:82:PRO:CD	2.28	0.64
1:B:153:VAL:O	1:B:157:VAL:HG22	2.00	0.62
1:B:281:ALA:HB1	1:B:287:MET:CE	2.33	0.58
1:B:113:VAL:HG22	1:B:122:GLU:HG3	1.87	0.57
1:A:81:ALA:HB3	1:A:82:PRO:CD	2.35	0.57
1:A:376:ASN:HD21	1:A:379:ASN:H	1.52	0.57
1:A:351:LEU:O	1:A:355:VAL:HG23	2.05	0.56
1:B:430:ILE:HD12	1:B:430:ILE:C	2.26	0.56
1:B:351:LEU:O	1:B:355:VAL:HG23	2.06	0.56
1:A:219[B]:MET:SD	1:A:270:LEU:HD21	2.46	0.55
1:B:81:ALA:CB	1:B:82:PRO:CD	2.86	0.54
1:A:430:ILE:HD12	1:A:431:GLY:N	2.23	0.54
1:A:546:ASP:HB3	1:A:549:ALA:HB2	1.88	0.53
1:B:200:GLU:HG2	6:B:2055:HOH:O	2.09	0.53
1:A:281:ALA:HB1	1:A:287:MET:CE	2.39	0.52
1:B:14:HIS:CE1	1:B:42:MET:HE1	2.44	0.52
1:B:81:ALA:HB3	1:B:82:PRO:HD3	1.92	0.51
1:B:14:HIS:NE2	1:B:42:MET:CE	2.73	0.50
1:A:238:GLU:HA	1:A:260:GLN:HE22	1.76	0.49
1:B:65:ILE:HD13	1:B:434:TYR:CZ	2.48	0.49
1:A:14:HIS:CE1	1:A:42:MET:CE	2.96	0.48
1:A:14:HIS:NE2	1:A:42:MET:CE	2.76	0.48
1:B:264:ALA:HB3	1:B:355:VAL:HG13	1.95	0.48
1:A:14:HIS:NE2	1:A:42:MET:HE3	2.29	0.48
1:A:376:ASN:ND2	1:A:379:ASN:H	2.11	0.48

Continued on next page...

Continued from previous page...

Atom-1	Atom-2	Interatomic distance (Å)	Clash overlap (Å)
1:B:39:LEU:HD23	1:B:77:LEU:HD11	1.95	0.48
1:A:81:ALA:HB3	1:A:82:PRO:HD3	1.96	0.48
1:B:430:ILE:HD12	1:B:431:GLY:N	2.30	0.47
1:A:270:LEU:HD22	1:A:295:TRP:CH2	2.50	0.46
1:B:307:ILE:HB	4:B:1556:ADP:C2	2.51	0.46
1:A:81:ALA:CB	1:A:82:PRO:CD	2.94	0.46
1:B:209:LEU:HD11	1:B:319:ALA:HB3	1.97	0.46
1:A:104:LEU:HD23	1:A:166:VAL:HB	1.97	0.46
1:A:224:ALA:HA	1:A:326:ILE:HD13	1.98	0.46
1:B:92:ALA:HB2	1:B:132:HIS:HB3	1.97	0.45
1:A:243:PRO:HD3	1:A:348:THR:HG22	1.99	0.45
1:A:299:LEU:HD12	1:A:300:LYS:O	2.17	0.45
1:B:63:ALA:O	1:B:74:GLY:HA3	2.17	0.45
1:A:85:LEU:O	1:A:89:THR:HG23	2.16	0.45
1:B:546:ASP:HB3	1:B:549:ALA:HB2	1.98	0.45
1:A:63:ALA:O	1:A:74:GLY:HA3	2.18	0.43
1:B:84:PHE:HE2	1:B:128:VAL:HG12	1.83	0.43
1:B:364:GLY:O	1:B:367:THR:HG22	2.19	0.43
1:A:465:ILE:HG22	1:A:538:PRO:HB3	2.01	0.42
5:B:1557:B3P:H21	5:B:1557:B3P:H112	1.01	0.42
1:B:430:ILE:HD13	1:B:434:TYR:CD2	2.54	0.42
5:B:1557:B3P:H31	5:B:1557:B3P:H51	1.75	0.41
1:B:299:LEU:HD13	1:B:316:GLN:NE2	2.35	0.41
1:A:112:ILE:HG23	1:A:117:GLN:HB2	2.01	0.41
1:B:168:LEU:HD22	1:B:172:LEU:HD23	2.02	0.41
1:A:62:ALA:HB1	1:A:437:ALA:HB2	2.03	0.41
1:A:116:GLN:NE2	6:A:2057:HOH:O	2.54	0.40
1:A:56:GLU:OE2	2:B:1554:TPW:N1'	2.54	0.40

There are no symmetry-related clashes.

5.3 Torsion angles [i](#)

5.3.1 Protein backbone [i](#)

In the following table, the Percentiles column shows the percent Ramachandran outliers of the chain as a percentile score with respect to all X-ray entries followed by that with respect to entries of similar resolution.

The Analysed column shows the number of residues for which the backbone conformation was analysed, and the total number of residues.

Mol	Chain	Analysed	Favoured	Allowed	Outliers	Percentiles	
1	A	547/568 (96%)	529 (97%)	16 (3%)	2 (0%)	38	41
1	B	548/568 (96%)	530 (97%)	17 (3%)	1 (0%)	51	58
All	All	1095/1136 (96%)	1059 (97%)	33 (3%)	3 (0%)	44	49

All (3) Ramachandran outliers are listed below:

Mol	Chain	Res	Type
1	A	81	ALA
1	B	81	ALA
1	A	79	VAL

5.3.2 Protein sidechains ⓘ

In the following table, the Percentiles column shows the percent sidechain outliers of the chain as a percentile score with respect to all X-ray entries followed by that with respect to entries of similar resolution.

The Analysed column shows the number of residues for which the sidechain conformation was analysed, and the total number of residues.

Mol	Chain	Analysed	Rotameric	Outliers	Percentiles	
1	A	428/445 (96%)	416 (97%)	12 (3%)	49	61
1	B	429/445 (96%)	415 (97%)	14 (3%)	43	54
All	All	857/890 (96%)	831 (97%)	26 (3%)	45	58

All (26) residues with a non-rotameric sidechain are listed below:

Mol	Chain	Res	Type
1	A	52	SER
1	A	80	SER
1	A	110	ARG
1	A	169	PRO
1	A	217	VAL
1	A	294	THR
1	A	299	LEU
1	A	338	LYS
1	A	354	LYS
1	A	369	GLU
1	A	376	ASN
1	A	502	ARG
1	B	80	SER

Continued on next page...

Continued from previous page...

Mol	Chain	Res	Type
1	B	88	VAL
1	B	110	ARG
1	B	128	VAL
1	B	257	ASN
1	B	294	THR
1	B	338	LYS
1	B	354	LYS
1	B	369	GLU
1	B	374	MET
1	B	462	LEU
1	B	502	ARG
1	B	509	MET
1	B	553	SER

Some sidechains can be flipped to improve hydrogen bonding and reduce clashes. All (8) such sidechains are listed below:

Mol	Chain	Res	Type
1	A	260	GLN
1	A	376	ASN
1	B	183	ASN
1	B	196	GLN
1	B	228	GLN
1	B	257	ASN
1	B	316	GLN
1	B	358	ASN

5.3.3 RNA ⓘ

There are no RNA molecules in this entry.

5.4 Non-standard residues in protein, DNA, RNA chains ⓘ

There are no non-standard protein/DNA/RNA residues in this entry.

5.5 Carbohydrates ⓘ

There are no carbohydrates in this entry.

5.6 Ligand geometry

Of 8 ligands modelled in this entry, 2 are monoatomic - leaving 6 for Mogul analysis.

In the following table, the Counts columns list the number of bonds (or angles) for which Mogul statistics could be retrieved, the number of bonds (or angles) that are observed in the model and the number of bonds (or angles) that are defined in the chemical component dictionary. The Link column lists molecule types, if any, to which the group is linked. The Z score for a bond length (or angle) is the number of standard deviations the observed value is removed from the expected value. A bond length (or angle) with $|Z| > 2$ is considered an outlier worth inspection. RMSZ is the root-mean-square of all Z scores of the bond lengths (or angles).

Mol	Type	Chain	Res	Link	Bond lengths			Bond angles		
					Counts	RMSZ	# Z > 2	Counts	RMSZ	# Z > 2
2	TPW	A	1554	3	23,27,27	1.30	4 (17%)	27,40,40	1.50	5 (18%)
4	ADP	A	1556	-	25,29,29	1.09	2 (8%)	24,45,45	1.79	4 (16%)
5	B3P	A	1557	-	18,18,18	0.62	0	21,23,23	0.71	0
2	TPW	B	1554	3	23,27,27	1.35	6 (26%)	27,40,40	1.44	5 (18%)
4	ADP	B	1556	-	25,29,29	1.04	1 (4%)	24,45,45	1.84	4 (16%)
5	B3P	B	1557	-	18,18,18	1.09	1 (5%)	21,23,23	3.40	6 (28%)

In the following table, the Chirals column lists the number of chiral outliers, the number of chiral centers analysed, the number of these observed in the model and the number defined in the chemical component dictionary. Similar counts are reported in the Torsion and Rings columns. '-' means no outliers of that kind were identified.

Mol	Type	Chain	Res	Link	Chirals	Torsions	Rings
2	TPW	A	1554	3	-	0/16/17/17	0/2/2/2
4	ADP	A	1556	-	-	0/12/32/32	0/3/3/3
5	B3P	A	1557	-	-	0/28/28/28	0/0/0/0
2	TPW	B	1554	3	-	0/16/17/17	0/2/2/2
4	ADP	B	1556	-	-	0/12/32/32	0/3/3/3
5	B3P	B	1557	-	-	0/28/28/28	0/0/0/0

All (14) bond length outliers are listed below:

Mol	Chain	Res	Type	Atoms	Z	Observed(Å)	Ideal(Å)
2	B	1554	TPW	C2'-N1'	2.02	1.37	1.34
5	B	1557	B3P	C10-C8	2.07	1.55	1.53
2	A	1554	TPW	C2'-N1'	2.08	1.37	1.34
2	B	1554	TPW	C6'-N1'	2.08	1.38	1.34
2	B	1554	TPW	C2'-N3'	2.09	1.37	1.34
2	B	1554	TPW	C4'-N3'	2.10	1.38	1.35
2	A	1554	TPW	C2-S1	2.21	1.74	1.70

Continued on next page...

Continued from previous page...

Mol	Chain	Res	Type	Atoms	Z	Observed(Å)	Ideal(Å)
4	A	1556	ADP	PB-O3A	2.27	1.63	1.60
2	B	1554	TPW	C2-C3	2.34	1.38	1.37
2	A	1554	TPW	C2'-N3'	2.35	1.38	1.34
2	B	1554	TPW	C2-S1	2.54	1.74	1.70
2	A	1554	TPW	C4'-N3'	2.78	1.39	1.35
4	A	1556	ADP	C5-C4	3.38	1.48	1.40
4	B	1556	ADP	C5-C4	3.38	1.48	1.40

All (24) bond angle outliers are listed below:

Mol	Chain	Res	Type	Atoms	Z	Observed(°)	Ideal(°)
5	B	1557	B3P	C9-C8-N2	-8.36	84.73	108.98
5	B	1557	B3P	C11-C8-N2	-7.09	88.42	108.98
4	B	1556	ADP	N3-C2-N1	-7.04	122.72	128.86
4	A	1556	ADP	N3-C2-N1	-6.45	123.24	128.86
5	B	1557	B3P	C10-C8-N2	-6.34	90.58	108.98
2	A	1554	TPW	N1'-C2'-N3'	-3.32	119.84	125.59
4	A	1556	ADP	C4-C5-N7	-3.22	106.30	109.41
2	B	1554	TPW	N1'-C2'-N3'	-2.98	120.43	125.59
4	B	1556	ADP	C4-C5-N7	-2.82	106.69	109.41
4	A	1556	ADP	C1'-N9-C4	-2.47	122.37	126.64
2	B	1554	TPW	C5'-C6'-N1'	-2.39	119.83	123.87
4	B	1556	ADP	C1'-N9-C4	-2.05	123.09	126.64
4	A	1556	ADP	C2-N1-C6	2.03	122.32	118.77
2	A	1554	TPW	N4'-C4'-N3'	2.12	120.14	117.00
2	A	1554	TPW	C6'-N1'-C2'	2.30	119.85	115.88
2	B	1554	TPW	C6'-N1'-C2'	2.38	119.99	115.88
2	B	1554	TPW	C2A-C2'-N1'	2.46	119.84	117.06
4	B	1556	ADP	C2-N1-C6	2.51	123.16	118.77
2	A	1554	TPW	C2A-C2'-N1'	2.70	120.11	117.06
2	A	1554	TPW	C6'-C5'-C4'	2.88	119.51	115.68
2	B	1554	TPW	C6'-C5'-C4'	2.95	119.60	115.68
5	B	1557	B3P	C11-C8-C10	3.32	116.93	110.09
5	B	1557	B3P	C10-C8-C9	4.39	119.12	110.09
5	B	1557	B3P	C11-C8-C9	6.52	123.52	110.09

There are no chirality outliers.

There are no torsion outliers.

There are no ring outliers.

3 monomers are involved in 4 short contacts:

Mol	Chain	Res	Type	Clashes	Symm-Clashes
2	B	1554	TPW	1	0
4	B	1556	ADP	1	0
5	B	1557	B3P	2	0

5.7 Other polymers [i](#)

There are no such residues in this entry.

5.8 Polymer linkage issues [i](#)

There are no chain breaks in this entry.

6 Fit of model and data [i](#)

6.1 Protein, DNA and RNA chains [i](#)

In the following table, the column labelled ‘#RSRZ > 2’ contains the number (and percentage) of RSRZ outliers, followed by percent RSRZ outliers for the chain as percentile scores relative to all X-ray entries and entries of similar resolution. The OWAB column contains the minimum, median, 95th percentile and maximum values of the occupancy-weighted average B-factor per residue. The column labelled ‘Q < 0.9’ lists the number of (and percentage) of residues with an average occupancy less than 0.9.

Mol	Chain	Analysed	<RSRZ>	#RSRZ>2	OWAB(Å ²)	Q<0.9
1	A	547/568 (96%)	-0.14	6 (1%) 80 79	30, 38, 48, 60	0
1	B	547/568 (96%)	-0.05	8 (1%) 74 72	31, 39, 48, 59	0
All	All	1094/1136 (96%)	-0.09	14 (1%) 77 75	30, 39, 48, 60	0

All (14) RSRZ outliers are listed below:

Mol	Chain	Res	Type	RSRZ
1	A	7	VAL	7.4
1	B	7	VAL	4.2
1	B	296	GLY	4.0
1	B	553	SER	2.9
1	A	180	GLU	2.8
1	B	127[A]	ASN	2.8
1	B	299	LEU	2.7
1	B	367	THR	2.6
1	A	8	GLU	2.5
1	B	369	GLU	2.4
1	A	127[A]	ASN	2.2
1	B	492	PRO	2.1
1	A	9	LEU	2.0
1	A	297	ASP	2.0

6.2 Non-standard residues in protein, DNA, RNA chains [i](#)

There are no non-standard protein/DNA/RNA residues in this entry.

6.3 Carbohydrates [i](#)

There are no carbohydrates in this entry.

6.4 Ligands

In the following table, the Atoms column lists the number of modelled atoms in the group and the number defined in the chemical component dictionary. LLDF column lists the quality of electron density of the group with respect to its neighbouring residues in protein, DNA or RNA chains. The B-factors column lists the minimum, median, 95th percentile and maximum values of B factors of atoms in the group. The column labelled 'Q < 0.9' lists the number of atoms with occupancy less than 0.9.

Mol	Type	Chain	Res	Atoms	RSCC	RSR	LLDF	B-factors(Å ²)	Q<0.9
5	B3P	A	1557	19/19	0.85	0.18	5.94	71,78,85,86	0
5	B3P	B	1557	19/19	0.80	0.24	3.25	70,76,83,83	0
4	ADP	A	1556	27/27	0.97	0.14	0.19	42,45,46,46	0
4	ADP	B	1556	27/27	0.97	0.13	-0.25	41,44,45,45	0
2	TPW	B	1554	26/26	0.98	0.10	-0.68	30,33,34,36	0
2	TPW	A	1554	26/26	0.99	0.06	-2.27	26,29,33,34	0
3	MG	B	1555	1/1	0.97	0.04	-2.28	36,36,36,36	0
3	MG	A	1555	1/1	0.97	0.04	-2.78	26,26,26,26	0

6.5 Other polymers

There are no such residues in this entry.