



Full wwPDB X-ray Structure Validation Report ⓘ

Sep 11, 2017 – 06:23 AM EDT

PDB ID : 5JI2
Title : HslU L199Q in HslUV complex
Authors : Grant, R.A.; Sauer, R.T.; Schmitz, K.R.; Baytshtok, V.
Deposited on : unknown
Resolution : 3.31 Å(reported)

This is a Full wwPDB X-ray Structure Validation Report for a publicly released PDB entry.

We welcome your comments at validation@mail.wwpdb.org

A user guide is available at

<http://wwpdb.org/validation/2016/XrayValidationReportHelp>

with specific help available everywhere you see the ⓘ symbol.

The following versions of software and data (see [references ⓘ](#)) were used in the production of this report:

MolProbity : 4.02b-467
Mogul : 1.7.2 (RC1), CSD as538be (2017)
Xtriage (Phenix) : 1.9-1692
EDS : rb-20029824
Percentile statistics : 20161228.v01 (using entries in the PDB archive December 28th 2016)
Refmac : 5.8.0135
CCP4 : 6.5.0
Ideal geometry (proteins) : Engh & Huber (2001)
Ideal geometry (DNA, RNA) : Parkinson et al. (1996)
Validation Pipeline (wwPDB-VP) : rb-20029824

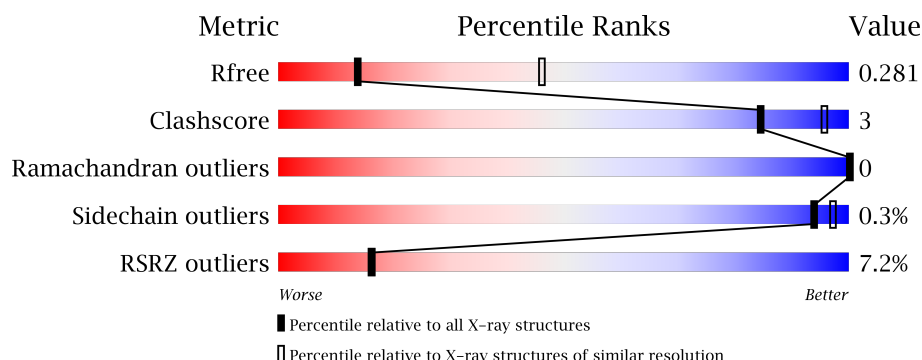
1 Overall quality at a glance ⓘ

The following experimental techniques were used to determine the structure:

X-RAY DIFFRACTION

The reported resolution of this entry is 3.31 Å.

Percentile scores (ranging between 0-100) for global validation metrics of the entry are shown in the following graphic. The table shows the number of entries on which the scores are based.



Metric	Whole archive (#Entries)	Similar resolution (#Entries, resolution range(Å))
R_{free}	100719	1034 (3.36-3.24)
Clashscore	112137	1100 (3.36-3.24)
Ramachandran outliers	110173	1081 (3.36-3.24)
Sidechain outliers	110143	1080 (3.36-3.24)
RSRZ outliers	101464	1039 (3.36-3.24)

The table below summarises the geometric issues observed across the polymeric chains and their fit to the electron density. The red, orange, yellow and green segments on the lower bar indicate the fraction of residues that contain outliers for ≥ 3 , 2, 1 and 0 types of geometric quality criteria. A grey segment represents the fraction of residues that are not modelled. The numeric value for each fraction is indicated below the corresponding segment, with a dot representing fractions $\leq 5\%$. The upper red bar (where present) indicates the fraction of residues that have poor fit to the electron density. The numeric value is given above the bar.

Mol	Chain	Length	Quality of chain
1	A	184	<div> <div>7%</div> <div>89%</div> <div>6%</div> <div>5%</div> </div>
1	B	184	<div> <div>7%</div> <div>86%</div> <div>8%</div> <div>5%</div> </div>
1	C	184	<div> <div>9%</div> <div>88%</div> <div>7%</div> <div>5%</div> </div>
1	D	184	<div> <div>10%</div> <div>85%</div> <div>9%</div> <div>5%</div> </div>
2	E	449	<div> <div>4%</div> <div>76%</div> <div>8%</div> <div>16%</div> </div>

Continued on next page...

Continued from previous page...

Mol	Chain	Length	Quality of chain
2	F	449	<div> <div> <div>5%</div> <div>73%</div> <div>6%</div> <div>21%</div> </div> </div>

2 Entry composition

There are 4 unique types of molecules in this entry. The entry contains 22164 atoms, of which 11132 are hydrogens and 0 are deuteriums.

In the tables below, the ZeroOcc column contains the number of atoms modelled with zero occupancy, the AltConf column contains the number of residues with at least one atom in alternate conformation and the Trace column contains the number of residues modelled with at most 2 atoms.

- Molecule 1 is a protein called ATP-dependent protease subunit HslV.

Mol	Chain	Residues	Atoms						ZeroOcc	AltConf	Trace
1	A	174	Total	C	H	N	O	S	1	0	0
			2640	828	1324	231	253	4			
1	B	174	Total	C	H	N	O	S	1	0	0
			2640	828	1324	231	253	4			
1	C	174	Total	C	H	N	O	S	1	0	0
			2640	828	1324	231	253	4			
1	D	174	Total	C	H	N	O	S	1	0	0
			2640	828	1324	231	253	4			

There are 32 discrepancies between the modelled and reference sequences:

Chain	Residue	Modelled	Actual	Comment	Reference
A	176	GLU	-	expression tag	UNP B7LA29
A	177	PHE	-	expression tag	UNP B7LA29
A	178	HIS	-	expression tag	UNP B7LA29
A	179	HIS	-	expression tag	UNP B7LA29
A	180	HIS	-	expression tag	UNP B7LA29
A	181	HIS	-	expression tag	UNP B7LA29
A	182	HIS	-	expression tag	UNP B7LA29
A	183	HIS	-	expression tag	UNP B7LA29
B	176	GLU	-	expression tag	UNP B7LA29
B	177	PHE	-	expression tag	UNP B7LA29
B	178	HIS	-	expression tag	UNP B7LA29
B	179	HIS	-	expression tag	UNP B7LA29
B	180	HIS	-	expression tag	UNP B7LA29
B	181	HIS	-	expression tag	UNP B7LA29
B	182	HIS	-	expression tag	UNP B7LA29
B	183	HIS	-	expression tag	UNP B7LA29
C	176	GLU	-	expression tag	UNP B7LA29
C	177	PHE	-	expression tag	UNP B7LA29
C	178	HIS	-	expression tag	UNP B7LA29
C	179	HIS	-	expression tag	UNP B7LA29
C	180	HIS	-	expression tag	UNP B7LA29

Continued on next page...

Continued from previous page...

Chain	Residue	Modelled	Actual	Comment	Reference
C	181	HIS	-	expression tag	UNP B7LA29
C	182	HIS	-	expression tag	UNP B7LA29
C	183	HIS	-	expression tag	UNP B7LA29
D	176	GLU	-	expression tag	UNP B7LA29
D	177	PHE	-	expression tag	UNP B7LA29
D	178	HIS	-	expression tag	UNP B7LA29
D	179	HIS	-	expression tag	UNP B7LA29
D	180	HIS	-	expression tag	UNP B7LA29
D	181	HIS	-	expression tag	UNP B7LA29
D	182	HIS	-	expression tag	UNP B7LA29
D	183	HIS	-	expression tag	UNP B7LA29

- Molecule 2 is a protein called ATP-dependent protease ATPase subunit HslU.

Mol	Chain	Residues	Atoms						ZeroOcc	AltConf	Trace
2	E	375	Total	C	H	N	O	S	0	0	0
			5930	1838	2991	521	570	10			
2	F	353	Total	C	H	N	O	S	0	0	0
			5593	1729	2821	498	536	9			

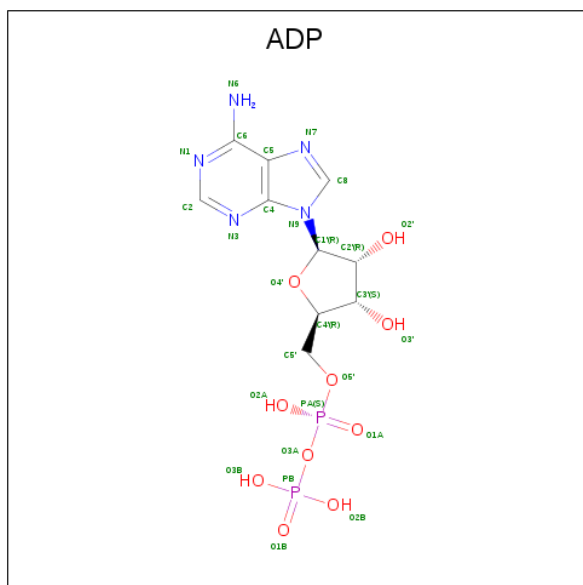
There are 16 discrepancies between the modelled and reference sequences:

Chain	Residue	Modelled	Actual	Comment	Reference
E	-5	MET	-	initiating methionine	UNP P0A6H6
E	-4	HIS	-	expression tag	UNP P0A6H6
E	-3	HIS	-	expression tag	UNP P0A6H6
E	-2	HIS	-	expression tag	UNP P0A6H6
E	-1	HIS	-	expression tag	UNP P0A6H6
E	0	HIS	-	expression tag	UNP P0A6H6
E	1	HIS	-	expression tag	UNP P0A6H6
E	199	GLN	LEU	engineered mutation	UNP P0A6H6
F	-5	MET	-	initiating methionine	UNP P0A6H6
F	-4	HIS	-	expression tag	UNP P0A6H6
F	-3	HIS	-	expression tag	UNP P0A6H6
F	-2	HIS	-	expression tag	UNP P0A6H6
F	-1	HIS	-	expression tag	UNP P0A6H6
F	0	HIS	-	expression tag	UNP P0A6H6
F	1	HIS	-	expression tag	UNP P0A6H6
F	199	GLN	LEU	engineered mutation	UNP P0A6H6

- Molecule 3 is MAGNESIUM ION (three-letter code: MG) (formula: Mg).

Mol	Chain	Residues	Atoms	ZeroOcc	AltConf
3	B	1	Total Mg 1 1	0	0
3	A	1	Total Mg 1 1	0	0
3	D	1	Total Mg 1 1	0	0

- Molecule 4 is ADENOSINE-5'-DIPHOSPHATE (three-letter code: ADP) (formula: $C_{10}H_{15}N_5O_{10}P_2$).

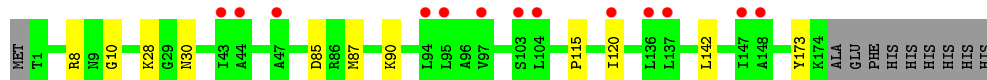


Mol	Chain	Residues	Atoms						ZeroOcc	AltConf
4	E	1	Total	C	H	N	O	P	0	0
			39	10	12	5	10	2		
4	F	1	Total	C	H	N	O	P	0	0
			39	10	12	5	10	2		

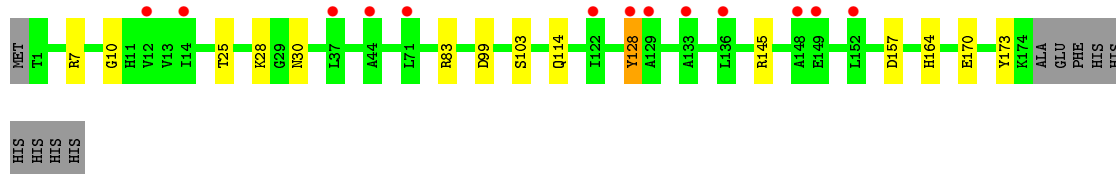
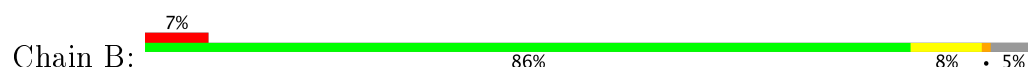
3 Residue-property plots [i](#)

These plots are drawn for all protein, RNA and DNA chains in the entry. The first graphic for a chain summarises the proportions of the various outlier classes displayed in the second graphic. The second graphic shows the sequence view annotated by issues in geometry and electron density. Residues are color-coded according to the number of geometric quality criteria for which they contain at least one outlier: green = 0, yellow = 1, orange = 2 and red = 3 or more. A red dot above a residue indicates a poor fit to the electron density ($RSRZ > 2$). Stretches of 2 or more consecutive residues without any outlier are shown as a green connector. Residues present in the sample, but not in the model, are shown in grey.

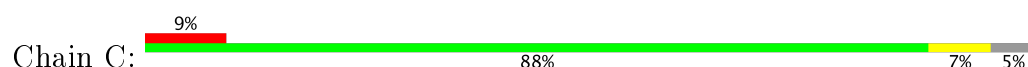
- Molecule 1: ATP-dependent protease subunit HslV



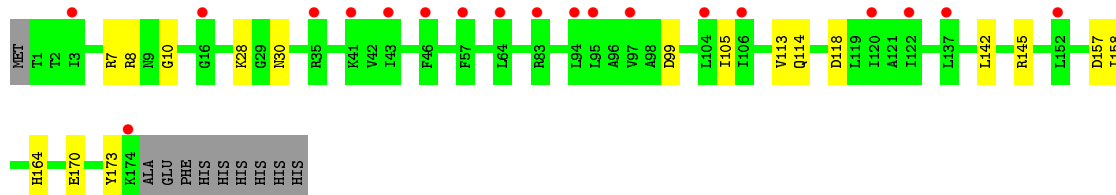
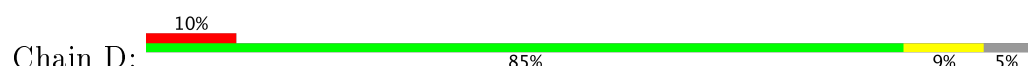
- Molecule 1: ATP-dependent protease subunit HslV



- Molecule 1: ATP-dependent protease subunit HslV

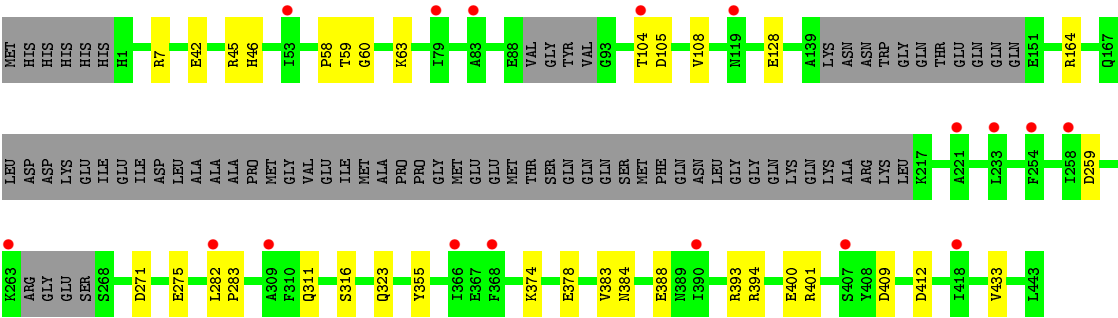


- Molecule 1: ATP-dependent protease subunit HslV

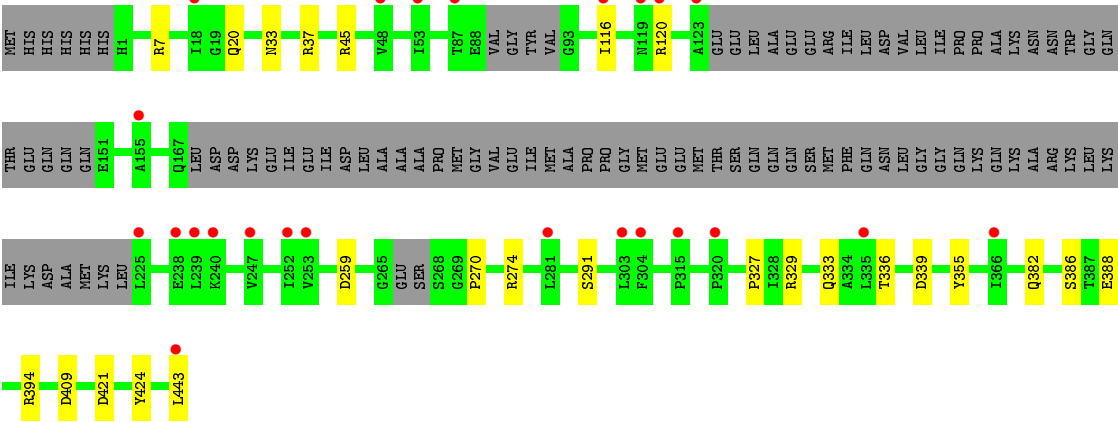


- Molecule 2: ATP-dependent protease ATPase subunit HslU





● Molecule 2: ATP-dependent protease ATPase subunit HslU



4 Data and refinement statistics

Property	Value	Source
Space group	P 3 2 1	Depositor
Cell constants a, b, c, α , β , γ	170.00Å 170.00Å 163.38Å 90.00° 90.00° 120.00°	Depositor
Resolution (Å)	49.08 – 3.31 49.08 – 3.31	Depositor EDS
% Data completeness (in resolution range)	99.9 (49.08-3.31) 97.0 (49.08-3.31)	Depositor EDS
R_{merge}	0.14	Depositor
R_{sym}	(Not available)	Depositor
$\langle I/\sigma(I) \rangle$ ¹	2.29 (at 3.33Å)	Xtriage
Refinement program	PHENIX (1.10_2155: ???)	Depositor
R, R_{free}	0.236 , 0.281 0.236 , 0.281	Depositor DCC
R_{free} test set	1942 reflections (4.86%)	DCC
Wilson B-factor (Å ²)	96.6	Xtriage
Anisotropy	0.115	Xtriage
Bulk solvent k_{sol} (e/Å ³), B_{sol} (Å ²)	0.39 , 63.0	EDS
L-test for twinning ²	$\langle L \rangle = 0.40$, $\langle L^2 \rangle = 0.22$	Xtriage
Estimated twinning fraction	0.448 for -h,-k,l	Xtriage
Reported twinning fraction	0.500 for -h,-k,l	Depositor
Outliers	0 of 41171 reflections	Xtriage
F_o, F_c correlation	0.92	EDS
Total number of atoms	22164	wwPDB-VP
Average B, all atoms (Å ²)	125.0	wwPDB-VP

Xtriage's analysis on translational NCS is as follows: *The largest off-origin peak in the Patterson function is 6.09% of the height of the origin peak. No significant pseudotranslation is detected.*

¹ Intensities estimated from amplitudes.

² Theoretical values of $\langle |L| \rangle$, $\langle L^2 \rangle$ for acentric reflections are 0.5, 0.333 respectively for untwinned datasets, and 0.375, 0.2 for perfectly twinned datasets.

5 Model quality [i](#)

5.1 Standard geometry [i](#)

Bond lengths and bond angles in the following residue types are not validated in this section: MG, ADP

The Z score for a bond length (or angle) is the number of standard deviations the observed value is removed from the expected value. A bond length (or angle) with $|Z| > 5$ is considered an outlier worth inspection. RMSZ is the root-mean-square of all Z scores of the bond lengths (or angles).

Mol	Chain	Bond lengths		Bond angles	
		RMSZ	$\# Z > 5$	RMSZ	$\# Z > 5$
1	A	0.26	0/1333	0.48	0/1803
1	B	0.26	0/1333	0.47	0/1803
1	C	0.26	0/1333	0.47	0/1803
1	D	0.26	0/1333	0.48	0/1803
2	E	0.24	0/2972	0.38	0/4006
2	F	0.24	0/2803	0.39	0/3774
All	All	0.25	0/11107	0.43	0/14992

There are no bond length outliers.

There are no bond angle outliers.

There are no chirality outliers.

There are no planarity outliers.

5.2 Too-close contacts [i](#)

In the following table, the Non-H and H(model) columns list the number of non-hydrogen atoms and hydrogen atoms in the chain respectively. The H(added) column lists the number of hydrogen atoms added and optimized by MolProbity. The Clashes column lists the number of clashes within the asymmetric unit, whereas Symm-Clashes lists symmetry related clashes.

Mol	Chain	Non-H	H(model)	H(added)	Clashes	Symm-Clashes
1	A	1316	1324	1326	5	2
1	B	1316	1324	1326	8	2
1	C	1316	1324	1326	7	0
1	D	1316	1324	1326	9	0
2	E	2939	2991	2993	22	1
2	F	2772	2821	2823	15	1
3	A	1	0	0	0	0

Continued on next page...

Continued from previous page...

Mol	Chain	Non-H	H(model)	H(added)	Clashes	Symm-Clashes
3	B	1	0	0	0	0
3	D	1	0	0	0	0
4	E	27	12	12	2	0
4	F	27	12	12	0	0
All	All	11032	11132	11144	60	3

The all-atom clashscore is defined as the number of clashes found per 1000 atoms (including hydrogen atoms). The all-atom clashscore for this structure is 3.

All (60) close contacts within the same asymmetric unit are listed below, sorted by their clash magnitude.

Atom-1	Atom-2	Interatomic distance (Å)	Clash overlap (Å)
2:E:63:LYS:N	4:E:501:ADP:O3B	2.25	0.68
2:E:384:ASN:OD1	2:E:394:ARG:NE	2.30	0.64
2:F:388:GLU:O	2:F:394:ARG:NH2	2.30	0.64
2:F:270:PRO:O	2:F:274:ARG:N	2.30	0.59
1:D:114:GLN:NE2	1:D:118:ASP:OD1	2.35	0.59
2:F:382:GLN:O	2:F:386:SER:N	2.32	0.58
1:A:8:ARG:NH1	1:A:142:LEU:O	2.37	0.58
2:E:409:ASP:OD1	2:F:7:ARG:NH2	2.38	0.57
2:F:37:ARG:NH1	2:F:45:ARG:O	2.39	0.55
2:E:105:ASP:OD2	2:F:291:SER:OG	2.24	0.55
2:F:394:ARG:NH1	2:F:443:LEU:O	2.37	0.54
2:E:59:THR:OG1	2:E:393:ARG:NH2	2.39	0.54
1:D:7:ARG:NH2	1:D:99:ASP:O	2.41	0.54
1:A:28:LYS:NZ	1:A:30:ASN:OD1	2.38	0.53
1:C:7:ARG:NH2	1:C:99:ASP:O	2.35	0.53
1:B:145:ARG:NE	1:B:170:GLU:OE1	2.36	0.53
2:E:401:ARG:NH2	2:F:329:ARG:O	2.41	0.53
2:E:60:GLY:N	4:E:501:ADP:O2B	2.39	0.53
2:E:316:SER:O	2:E:323:GLN:NE2	2.43	0.51
1:D:10:GLY:HA2	1:D:173:TYR:CE1	2.46	0.51
1:B:10:GLY:HA2	1:B:173:TYR:CE1	2.46	0.51
1:A:10:GLY:HA2	1:A:173:TYR:CE1	2.46	0.51
1:D:145:ARG:NE	1:D:170:GLU:OE1	2.38	0.50
2:E:128:GLU:OE1	2:E:164:ARG:NH2	2.45	0.50
2:F:116:ILE:O	2:F:120:ARG:N	2.46	0.49
2:E:42:GLU:OE1	2:E:45:ARG:NH2	2.44	0.49
2:E:400:GLU:HG3	2:F:327:PRO:HB2	1.95	0.48
1:B:28:LYS:NZ	1:B:30:ASN:OD1	2.42	0.48
2:F:20:GLN:NE2	2:F:333:GLN:O	2.45	0.48

Continued on next page...

Continued from previous page...

Atom-1	Atom-2	Interatomic distance (Å)	Clash overlap (Å)
1:C:10:GLY:HA2	1:C:173:TYR:CE1	2.48	0.48
1:B:103:SER:O	1:B:114:GLN:HG3	2.15	0.47
1:D:8:ARG:NH1	1:D:142:LEU:O	2.47	0.47
1:C:65:GLU:OE1	2:E:311:GLN:NE2	2.49	0.46
2:E:104:THR:O	2:E:108:VAL:N	2.47	0.46
2:F:336:THR:N	2:F:339:ASP:OD2	2.42	0.45
1:D:28:LYS:NZ	1:D:30:ASN:OD1	2.42	0.45
1:C:128:TYR:N	1:C:128:TYR:CD1	2.84	0.44
2:F:259:ASP:OD1	2:F:259:ASP:N	2.51	0.43
2:F:421:ASP:OD1	2:F:424:TYR:N	2.42	0.43
1:A:115:PRO:HG2	1:A:120:ILE:HG12	2.00	0.43
1:C:157:ASP:OD1	1:C:164:HIS:NE2	2.35	0.43
1:D:157:ASP:OD1	1:D:164:HIS:NE2	2.51	0.43
2:E:259:ASP:OD1	2:E:259:ASP:N	2.50	0.43
2:E:383:VAL:HG22	2:E:433:VAL:HG13	2.01	0.42
1:B:128:TYR:N	1:B:128:TYR:CD1	2.87	0.42
1:C:105:ILE:N	1:C:113:VAL:O	2.44	0.42
2:E:58:PRO:O	2:E:63:LYS:NZ	2.50	0.42
1:B:25:THR:HG23	1:D:158:ILE:HG23	2.00	0.42
1:C:115:PRO:HG2	1:C:120:ILE:HG12	2.02	0.42
2:E:409:ASP:O	2:E:412:ASP:N	2.48	0.42
2:E:42:GLU:O	2:E:46:HIS:ND1	2.51	0.42
2:E:271:ASP:O	2:E:275:GLU:N	2.36	0.42
1:B:7:ARG:NH2	1:B:99:ASP:O	2.39	0.41
2:E:282:LEU:N	2:E:283:PRO:HD2	2.35	0.41
2:E:374:LYS:O	2:E:378:GLU:HG3	2.21	0.41
1:A:85:ASP:OD1	1:A:87:MET:N	2.41	0.41
1:B:157:ASP:OD1	1:B:164:HIS:NE2	2.50	0.41
2:F:33:ASN:O	2:F:37:ARG:N	2.46	0.41
1:D:105:ILE:N	1:D:113:VAL:O	2.45	0.40
2:E:388:GLU:O	2:E:394:ARG:NH2	2.51	0.40

All (3) symmetry-related close contacts are listed below. The label for Atom-2 includes the symmetry operator and encoded unit-cell translations to be applied.

Atom-1	Atom-2	Interatomic distance (Å)	Clash overlap (Å)
1:A:28:LYS:HZ3	1:B:114:GLN:O[2_665]	1.54	0.06
2:E:7:ARG:NH2	2:F:409:ASP:OD1[3_565]	2.14	0.06
1:A:90:LYS:O	1:B:83:ARG:HH11[2_665]	1.56	0.04

5.3 Torsion angles ⓘ

5.3.1 Protein backbone ⓘ

In the following table, the Percentiles column shows the percent Ramachandran outliers of the chain as a percentile score with respect to all X-ray entries followed by that with respect to entries of similar resolution.

The Analysed column shows the number of residues for which the backbone conformation was analysed, and the total number of residues.

Mol	Chain	Analysed	Favoured	Allowed	Outliers	Percentiles	
1	A	172/184 (94%)	171 (99%)	1 (1%)	0	100	100
1	B	172/184 (94%)	169 (98%)	3 (2%)	0	100	100
1	C	172/184 (94%)	169 (98%)	3 (2%)	0	100	100
1	D	172/184 (94%)	170 (99%)	2 (1%)	0	100	100
2	E	365/449 (81%)	361 (99%)	4 (1%)	0	100	100
2	F	343/449 (76%)	336 (98%)	7 (2%)	0	100	100
All	All	1396/1634 (85%)	1376 (99%)	20 (1%)	0	100	100

There are no Ramachandran outliers to report.

5.3.2 Protein sidechains ⓘ

In the following table, the Percentiles column shows the percent sidechain outliers of the chain as a percentile score with respect to all X-ray entries followed by that with respect to entries of similar resolution.

The Analysed column shows the number of residues for which the sidechain conformation was analysed, and the total number of residues.

Mol	Chain	Analysed	Rotameric	Outliers	Percentiles	
1	A	134/145 (92%)	134 (100%)	0	100	100
1	B	134/145 (92%)	133 (99%)	1 (1%)	87	92
1	C	134/145 (92%)	134 (100%)	0	100	100
1	D	134/145 (92%)	134 (100%)	0	100	100
2	E	318/383 (83%)	317 (100%)	1 (0%)	94	97
2	F	300/383 (78%)	299 (100%)	1 (0%)	94	97
All	All	1154/1346 (86%)	1151 (100%)	3 (0%)	94	97

All (3) residues with a non-rotameric sidechain are listed below:

Mol	Chain	Res	Type
1	B	128	TYR
2	E	355	TYR
2	F	355	TYR

Some sidechains can be flipped to improve hydrogen bonding and reduce clashes. All (12) such sidechains are listed below:

Mol	Chain	Res	Type
1	A	9	ASN
1	B	39	ASN
1	C	9	ASN
1	C	139	ASN
1	C	166	HIS
1	D	166	HIS
2	E	235	ASN
2	E	311	GLN
2	F	75	ASN
2	F	114	GLN
2	F	396	HIS
2	F	428	HIS

5.3.3 RNA [i](#)

There are no RNA molecules in this entry.

5.4 Non-standard residues in protein, DNA, RNA chains [i](#)

There are no non-standard protein/DNA/RNA residues in this entry.

5.5 Carbohydrates [i](#)

There are no carbohydrates in this entry.

5.6 Ligand geometry [i](#)

Of 5 ligands modelled in this entry, 3 are monoatomic - leaving 2 for Mogul analysis.

In the following table, the Counts columns list the number of bonds (or angles) for which Mogul statistics could be retrieved, the number of bonds (or angles) that are observed in the model and

the number of bonds (or angles) that are defined in the chemical component dictionary. The Link column lists molecule types, if any, to which the group is linked. The Z score for a bond length (or angle) is the number of standard deviations the observed value is removed from the expected value. A bond length (or angle) with $|Z| > 2$ is considered an outlier worth inspection. RMSZ is the root-mean-square of all Z scores of the bond lengths (or angles).

Mol	Type	Chain	Res	Link	Bond lengths			Bond angles		
					Counts	RMSZ	# Z > 2	Counts	RMSZ	# Z > 2
4	ADP	E	501	-	25,29,29	0.99	1 (4%)	24,45,45	1.67	2 (8%)
4	ADP	F	501	-	25,29,29	0.96	1 (4%)	24,45,45	1.68	2 (8%)

In the following table, the Chirals column lists the number of chiral outliers, the number of chiral centers analysed, the number of these observed in the model and the number defined in the chemical component dictionary. Similar counts are reported in the Torsion and Rings columns. '-' means no outliers of that kind were identified.

Mol	Type	Chain	Res	Link	Chirals	Torsions	Rings
4	ADP	E	501	-	-	0/12/32/32	0/3/3/3
4	ADP	F	501	-	-	0/12/32/32	0/3/3/3

All (2) bond length outliers are listed below:

Mol	Chain	Res	Type	Atoms	Z	Observed(Å)	Ideal(Å)
4	F	501	ADP	C5-C4	2.82	1.46	1.40
4	E	501	ADP	C5-C4	2.96	1.47	1.40

All (4) bond angle outliers are listed below:

Mol	Chain	Res	Type	Atoms	Z	Observed(°)	Ideal(°)
4	E	501	ADP	N3-C2-N1	-6.59	123.12	128.86
4	F	501	ADP	N3-C2-N1	-6.55	123.16	128.86
4	F	501	ADP	C4-C5-N7	-2.40	107.09	109.41
4	E	501	ADP	C4-C5-N7	-2.30	107.19	109.41

There are no chirality outliers.

There are no torsion outliers.

There are no ring outliers.

1 monomer is involved in 2 short contacts:

Mol	Chain	Res	Type	Clashes	Symm-Clashes
4	E	501	ADP	2	0

5.7 Other polymers

There are no such residues in this entry.

5.8 Polymer linkage issues

There are no chain breaks in this entry.

6 Fit of model and data

6.1 Protein, DNA and RNA chains

In the following table, the column labelled ‘#RSRZ> 2’ contains the number (and percentage) of RSRZ outliers, followed by percent RSRZ outliers for the chain as percentile scores relative to all X-ray entries and entries of similar resolution. The OWAB column contains the minimum, median, 95th percentile and maximum values of the occupancy-weighted average B-factor per residue. The column labelled ‘Q< 0.9’ lists the number of (and percentage) of residues with an average occupancy less than 0.9.

Mol	Chain	Analysed	<RSRZ>	#RSRZ>2		OWAB(Å ²)	Q<0.9
1	A	174/184 (94%)	0.78	13 (7%)	15 14	72, 115, 126, 132	1 (0%)
1	B	174/184 (94%)	0.77	13 (7%)	15 14	71, 111, 126, 139	1 (0%)
1	C	174/184 (94%)	0.77	17 (9%)	8 7	72, 114, 129, 141	1 (0%)
1	D	174/184 (94%)	0.77	19 (10%)	6 5	71, 114, 129, 139	1 (0%)
2	E	375/449 (83%)	0.66	17 (4%)	34 32	93, 110, 128, 141	0
2	F	353/449 (78%)	0.77	24 (6%)	18 18	90, 111, 136, 152	0
All	All	1424/1634 (87%)	0.74	103 (7%)	16 16	71, 112, 131, 152	4 (0%)

All (103) RSRZ outliers are listed below:

Mol	Chain	Res	Type	RSRZ
2	F	239	LEU	6.1
2	F	116	ILE	5.2
2	E	119	ASN	4.4
2	F	366	ILE	4.3
2	E	390	ILE	3.3
1	B	149	GLU	3.2
2	F	120	ARG	3.2
2	F	18	ILE	3.2
1	A	95	LEU	3.1
1	C	110	GLY	3.1
2	E	309	ALA	3.0
1	D	95	LEU	3.0
1	B	14	ILE	3.0
2	F	225	LEU	3.0
2	E	233	LEU	3.0
1	D	57	PHE	2.9
2	F	119	ASN	2.9
2	E	79	ILE	2.9
1	A	44	ALA	2.8

Continued on next page...

Continued from previous page...

Mol	Chain	Res	Type	RSRZ
2	E	221	ALA	2.8
1	A	47	ALA	2.8
1	B	136	LEU	2.8
2	E	407	SER	2.8
1	C	105	ILE	2.7
2	E	53	ILE	2.7
2	E	368	PHE	2.7
2	F	155	ALA	2.7
2	F	123	ALA	2.7
2	F	53	ILE	2.7
1	C	131	ALA	2.7
1	D	174	LYS	2.7
1	B	71	LEU	2.7
2	F	281	LEU	2.6
2	F	238	GLU	2.6
1	C	95	LEU	2.6
2	F	320	PRO	2.6
1	A	120	ILE	2.6
2	F	240	LYS	2.6
1	D	122	ILE	2.6
1	C	120	ILE	2.5
1	D	106	ILE	2.5
1	A	97	VAL	2.4
1	C	92	GLU	2.4
2	E	418	ILE	2.4
1	B	44	ALA	2.4
1	B	129	ALA	2.4
1	A	43	ILE	2.4
2	F	252	ILE	2.4
1	A	147	ILE	2.4
2	F	315	PRO	2.4
1	C	100	GLU	2.3
1	D	3	ILE	2.3
2	E	254	PHE	2.3
2	E	83	ALA	2.3
2	F	303	LEU	2.3
1	D	41	LYS	2.3
1	C	37	LEU	2.3
2	F	335	LEU	2.3
1	A	148	ALA	2.3
1	A	103	SER	2.3
1	C	45	GLY	2.3

Continued on next page...

Continued from previous page...

Mol	Chain	Res	Type	RSRZ
1	D	94	LEU	2.3
2	F	247	VAL	2.3
1	C	43	ILE	2.2
1	A	104	LEU	2.2
1	C	151	ALA	2.2
1	B	152	LEU	2.2
1	D	46	PHE	2.2
1	B	128	TYR	2.2
1	A	136	LEU	2.2
1	B	37	LEU	2.2
2	E	104	THR	2.2
1	D	35	ARG	2.2
1	D	97	VAL	2.2
1	A	137	LEU	2.2
2	E	263	LYS	2.2
1	D	43	ILE	2.2
2	F	48	VAL	2.2
1	D	16	GLY	2.2
1	D	83	ARG	2.2
2	F	253	VAL	2.2
1	C	14	ILE	2.1
1	D	104	LEU	2.1
1	C	113	VAL	2.1
1	C	147	ILE	2.1
2	E	258	ILE	2.1
1	D	152	LEU	2.1
1	A	94	LEU	2.1
1	B	122	ILE	2.1
1	D	64	LEU	2.1
1	C	94	LEU	2.1
2	F	443	LEU	2.1
1	C	168	ILE	2.1
1	B	148	ALA	2.0
1	B	12	VAL	2.0
1	C	44	ALA	2.0
1	D	137	LEU	2.0
2	E	282	LEU	2.0
2	E	366	ILE	2.0
1	D	120	ILE	2.0
1	B	133	ALA	2.0
2	F	304	PHE	2.0
2	F	87	THR	2.0

6.2 Non-standard residues in protein, DNA, RNA chains [i](#)

There are no non-standard protein/DNA/RNA residues in this entry.

6.3 Carbohydrates [i](#)

There are no carbohydrates in this entry.

6.4 Ligands [i](#)

In the following table, the Atoms column lists the number of modelled atoms in the group and the number defined in the chemical component dictionary. LLDF column lists the quality of electron density of the group with respect to its neighbouring residues in protein, DNA or RNA chains. The B-factors column lists the minimum, median, 95th percentile and maximum values of B factors of atoms in the group. The column labelled 'Q< 0.9' lists the number of atoms with occupancy less than 0.9.

Mol	Type	Chain	Res	Atoms	RSCC	RSR	LLDF	B-factors(\AA^2)	Q<0.9
3	MG	B	201	1/1	0.83	0.29	0.25	48,48,48,48	0
3	MG	D	201	1/1	0.92	0.26	-0.14	60,60,60,60	0
4	ADP	E	501	27/27	0.95	0.29	-0.53	65,81,103,115	0
4	ADP	F	501	27/27	0.95	0.26	-0.92	87,102,124,131	0
3	MG	A	201	1/1	0.74	0.22	-1.15	62,62,62,62	0

6.5 Other polymers [i](#)

There are no such residues in this entry.