



Full wwPDB X-ray Structure Validation Report ⓘ

Feb 14, 2017 – 09:02 pm GMT

PDB ID : 1JJI
Title : The Crystal Structure of a Hyper-thermophilic Carboxylesterase from the Archaeon *Archaeoglobus fulgidus*
Authors : De Simone, G.; Menchise, V.; Manco, G.; Mandrich, L.; Sorrentino, N.; Lang, D.; Rossi, M.; Pedone, C.
Deposited on : 2001-07-06
Resolution : 2.20 Å(reported)

This is a Full wwPDB X-ray Structure Validation Report for a publicly released PDB entry.

We welcome your comments at validation@mail.wwpdb.org

A user guide is available at

<http://wwpdb.org/validation/2016/XrayValidationReportHelp>

with specific help available everywhere you see the ⓘ symbol.

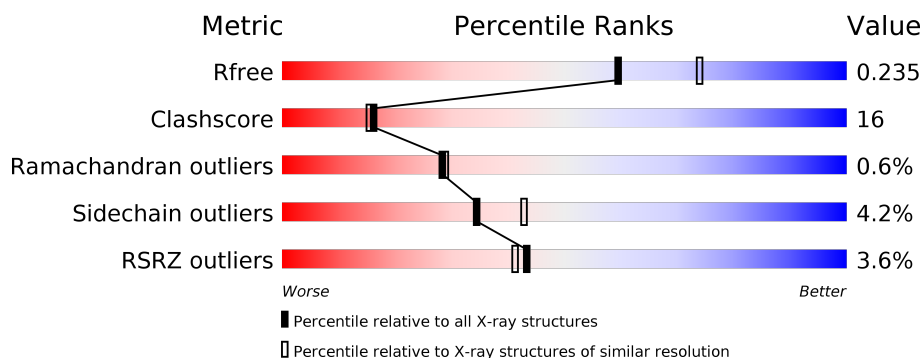
The following versions of software and data (see [references ⓘ](#)) were used in the production of this report:

MolProbity	:	4.02b-467
Mogul	:	1.7.2 (RC1), CSD as538be (2017)
Xtriage (Phenix)	:	1.9-1692
EDS	:	trunk28620
Percentile statistics	:	20161228.v01 (using entries in the PDB archive December 28th 2016)
Refmac	:	5.8.0135
CCP4	:	6.5.0
Ideal geometry (proteins)	:	Engh & Huber (2001)
Ideal geometry (DNA, RNA)	:	Parkinson et al. (1996)
Validation Pipeline (wwPDB-VP)	:	recalc28949

i

X-RAY DIFFRACTION

A.



Metric	Whole archive (#Entries)	Similar resolution (#Entries, resolution range(Å))
R _{free}	100719	4002 (2.20-2.20)
Clashscore	112137	4730 (2.20-2.20)
Ramachandran outliers	110173	4656 (2.20-2.20)
Sidechain outliers	110143	4657 (2.20-2.20)
RSRZ outliers	101464	4033 (2.20-2.20)

Mol	Chain	Length	Quality of chain
1	A	311	<div> <div></div> <div>79%</div> <div>19%</div> <div></div> </div>
1	B	311	<div> <div></div> <div>75%</div> <div>22%</div> <div></div> </div>
1	C	311	<div> <div></div> <div>67%</div> <div>30%</div> <div></div> </div>
1	D	311	<div> <div></div> <div>67%</div> <div>31%</div> <div></div> </div>

ria:

Mol	Type	Chain	Res	Chirality	Geometry	Clashes	Electron density
2	EPE	A	455	-	-	-	X
2	EPE	B	455	-	-	-	X
2	EPE	C	455	-	-	-	X
2	EPE	D	455	-	-	-	X

2 Entry composition [i](#)

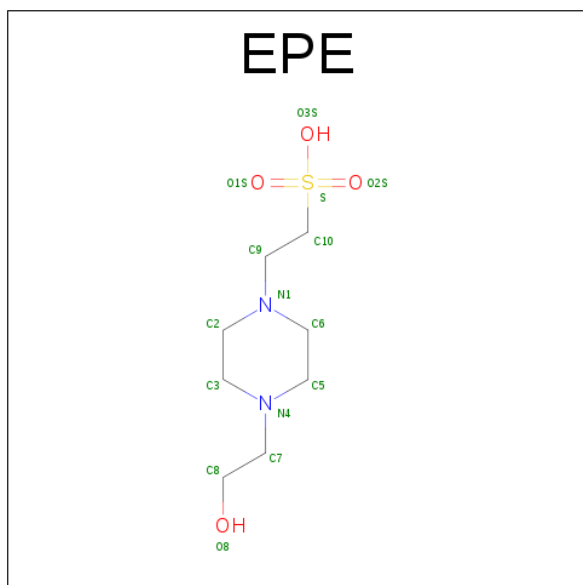
There are 3 unique types of molecules in this entry. The entry contains 10649 atoms, of which 0 are hydrogens and 0 are deuteriums.

In the tables below, the ZeroOcc column contains the number of atoms modelled with zero occupancy, the AltConf column contains the number of residues with at least one atom in alternate conformation and the Trace column contains the number of residues modelled with at most 2 atoms.

- Molecule 1 is a protein called Carboxylesterase.

Mol	Chain	Residues	Atoms					ZeroOcc	AltConf	Trace
1	A	311	Total	C	N	O	S	53	0	0
			2508	1602	430	468	8			
1	B	311	Total	C	N	O	S	46	0	0
			2508	1602	430	468	8			
1	C	311	Total	C	N	O	S	72	0	0
			2508	1602	430	468	8			
1	D	311	Total	C	N	O	S	54	0	0
			2508	1602	430	468	8			

- Molecule 2 is 4-(2-HYDROXYETHYL)-1-PIPERAZINE ETHANESULFONIC ACID (three-letter code: EPE) (formula: C₈H₁₈N₂O₄S).



Mol	Chain	Residues	Atoms					ZeroOcc	AltConf
2	A	1	Total	C	N	O	S	3	0
			14	8	2	3	1		
2	B	1	Total	C	N	O	S	3	0
			14	8	2	3	1		

Continued on next page...

Continued from previous page...

Mol	Chain	Residues	Atoms					ZeroOcc	AltConf
2	C	1	Total	C	N	O	S	3	0
			14	8	2	3	1		
2	D	1	Total	C	N	O	S	3	0
			14	8	2	3	1		

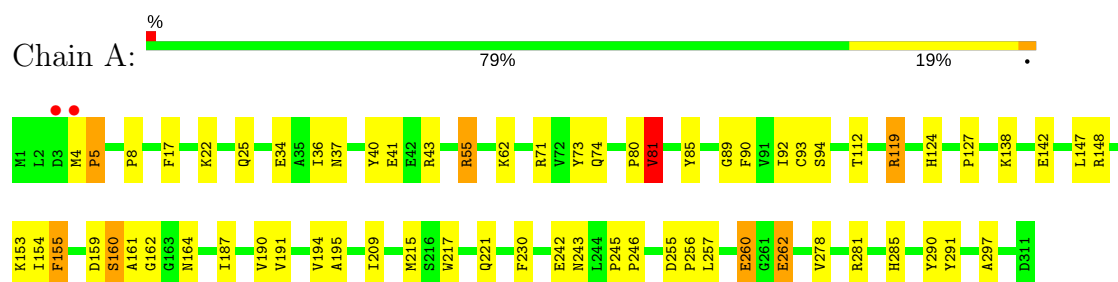
- Molecule 3 is water.

Mol	Chain	Residues	Atoms		ZeroOcc	AltConf
3	A	165	Total	O	0	0
			165	165		
3	B	180	Total	O	0	0
			180	180		
3	C	108	Total	O	0	0
			108	108		
3	D	108	Total	O	0	0
			108	108		

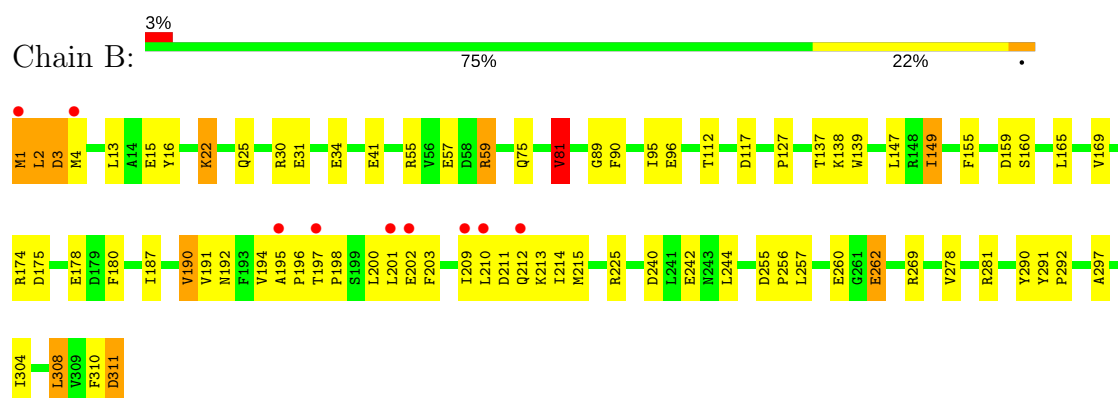
3 Residue-property plots [i](#)

These plots are drawn for all protein, RNA and DNA chains in the entry. The first graphic for a chain summarises the proportions of the various outlier classes displayed in the second graphic. The second graphic shows the sequence view annotated by issues in geometry and electron density. Residues are color-coded according to the number of geometric quality criteria for which they contain at least one outlier: green = 0, yellow = 1, orange = 2 and red = 3 or more. A red dot above a residue indicates a poor fit to the electron density ($RSRZ > 2$). Stretches of 2 or more consecutive residues without any outlier are shown as a green connector. Residues present in the sample, but not in the model, are shown in grey.

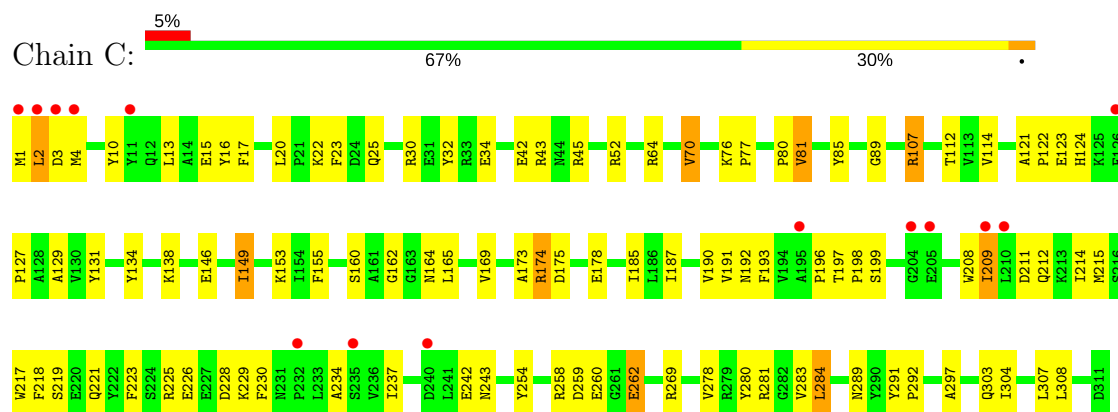
• Molecule 1: Carboxylesterase



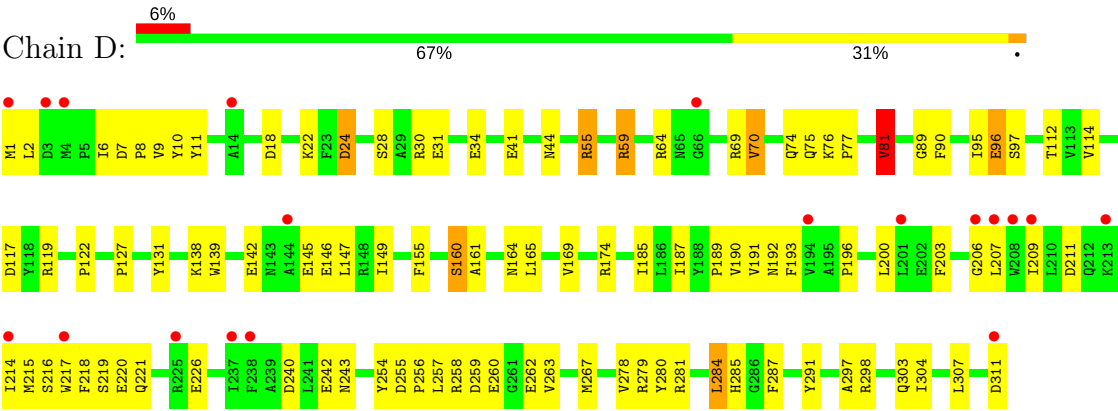
• Molecule 1: Carboxylesterase



• Molecule 1: Carboxylesterase



• Molecule 1: Carboxylesterase



4 Data and refinement statistics

Property	Value	Source
Space group	P 62	Depositor
Cell constants a, b, c, α , β , γ	169.05Å 169.05Å 104.54Å 90.00° 90.00° 120.00°	Depositor
Resolution (Å)	8.00 – 2.20 19.99 – 2.20	Depositor EDS
% Data completeness (in resolution range)	99.3 (8.00-2.20) 98.7 (19.99-2.20)	Depositor EDS
R_{merge}	0.06	Depositor
R_{sym}	(Not available)	Depositor
$\langle I/\sigma(I) \rangle$ ¹	2.17 (at 2.21Å)	Xtriage
Refinement program	CNS	Depositor
R, R_{free}	0.203 , 0.235 0.203 , 0.235	Depositor DCC
R_{free} test set	4177 reflections (4.99%)	DCC
Wilson B-factor (Å ²)	38.4	Xtriage
Anisotropy	0.165	Xtriage
Bulk solvent k_{sol} (e/Å ³), B_{sol} (Å ²)	0.38 , 46.3	EDS
L-test for twinning ²	$\langle L \rangle = 0.45$, $\langle L^2 \rangle = 0.27$	Xtriage
Estimated twinning fraction	0.104 for h,-h-k,-l	Xtriage
F_o, F_c correlation	0.95	EDS
Total number of atoms	10649	wwPDB-VP
Average B, all atoms (Å ²)	43.0	wwPDB-VP

Xtriage's analysis on translational NCS is as follows: *The largest off-origin peak in the Patterson function is 2.46% of the height of the origin peak. No significant pseudotranslation is detected.*

¹Intensities estimated from amplitudes.

²Theoretical values of $\langle |L| \rangle$, $\langle L^2 \rangle$ for acentric reflections are 0.5, 0.333 respectively for untwinned datasets, and 0.375, 0.2 for perfectly twinned datasets.

5 Model quality

5.1 Standard geometry

Bond lengths and bond angles in the following residue types are not validated in this section: EPE

The Z score for a bond length (or angle) is the number of standard deviations the observed value is removed from the expected value. A bond length (or angle) with $|Z| > 5$ is considered an outlier worth inspection. RMSZ is the root-mean-square of all Z scores of the bond lengths (or angles).

Mol	Chain	Bond lengths		Bond angles	
		RMSZ	$\# Z > 5$	RMSZ	$\# Z > 5$
1	A	0.64	2/2568 (0.1%)	0.72	1/3482 (0.0%)
1	B	0.63	1/2568 (0.0%)	0.75	4/3482 (0.1%)
1	C	0.58	2/2568 (0.1%)	0.70	2/3482 (0.1%)
1	D	0.57	1/2568 (0.0%)	0.67	2/3482 (0.1%)
All	All	0.61	6/10272 (0.1%)	0.71	9/13928 (0.1%)

Chiral center outliers are detected by calculating the chiral volume of a chiral center and verifying if the center is modelled as a planar moiety or with the opposite hand. A planarity outlier is detected by checking planarity of atoms in a peptide group, atoms in a mainchain group or atoms of a sidechain that are expected to be planar.

Mol	Chain	#Chirality outliers	#Planarity outliers
1	B	0	1

All (6) bond length outliers are listed below:

Mol	Chain	Res	Type	Atoms	Z	Observed(Å)	Ideal(Å)
1	D	146	GLU	CD-OE2	-6.30	1.18	1.25
1	B	262	GLU	CD-OE1	-6.25	1.18	1.25
1	A	262	GLU	CD-OE2	-6.14	1.19	1.25
1	C	262	GLU	CD-OE1	-5.19	1.20	1.25
1	C	146	GLU	CD-OE1	-5.17	1.20	1.25
1	A	260	GLU	CB-CG	-5.01	1.42	1.52

All (9) bond angle outliers are listed below:

Mol	Chain	Res	Type	Atoms	Z	Observed(°)	Ideal(°)
1	C	107	ARG	NE-CZ-NH2	-7.48	116.56	120.30
1	B	81	VAL	CB-CA-C	-7.18	97.76	111.40
1	A	81	VAL	CB-CA-C	-6.74	98.59	111.40

Continued on next page...

Continued from previous page...

Mol	Chain	Res	Type	Atoms	Z	Observed(°)	Ideal(°)
1	C	107	ARG	NE-CZ-NH1	5.76	123.18	120.30
1	D	81	VAL	CB-CA-C	-5.71	100.54	111.40
1	B	190	VAL	CB-CA-C	-5.37	101.20	111.40
1	B	3	ASP	CB-CG-OD1	-5.15	113.67	118.30
1	D	298	ARG	NE-CZ-NH2	-5.12	117.74	120.30
1	B	2	LEU	CA-CB-CG	-5.12	103.53	115.30

There are no chirality outliers.

All (1) planarity outliers are listed below:

Mol	Chain	Res	Type	Group
1	B	290	TYR	Sidechain

5.2 Too-close contacts ⓘ

In the following table, the Non-H and H(model) columns list the number of non-hydrogen atoms and hydrogen atoms in the chain respectively. The H(added) column lists the number of hydrogen atoms added and optimized by MolProbity. The Clashes column lists the number of clashes within the asymmetric unit, whereas Symm-Clashes lists symmetry related clashes.

Mol	Chain	Non-H	H(model)	H(added)	Clashes	Symm-Clashes
1	A	2508	0	2449	51	0
1	B	2508	0	2449	93	0
1	C	2508	0	2449	96	0
1	D	2508	0	2449	97	0
2	A	14	0	17	3	0
2	B	14	0	17	5	0
2	C	14	0	17	6	0
2	D	14	0	17	3	0
3	A	165	0	0	7	0
3	B	180	0	0	2	0
3	C	108	0	0	8	0
3	D	108	0	0	3	0
All	All	10649	0	9864	313	0

The all-atom clashscore is defined as the number of clashes found per 1000 atoms (including hydrogen atoms). The all-atom clashscore for this structure is 16.

All (313) close contacts within the same asymmetric unit are listed below, sorted by their clash magnitude.

Atom-1	Atom-2	Interatomic distance (Å)	Clash overlap (Å)
1:D:41:GLU:HG2	1:D:96:GLU:HB2	1.23	1.16
1:C:174:ARG:HG2	1:C:174:ARG:HH11	1.14	1.10
1:B:174:ARG:HG2	1:B:174:ARG:HH11	1.22	1.02
1:D:122:PRO:HG3	1:D:221:GLN:HE21	1.23	1.00
1:B:191:VAL:HG22	1:B:260:GLU:HG2	1.47	0.94
1:B:2:LEU:HD22	1:C:237:ILE:HD13	1.50	0.90
1:D:174:ARG:HG2	1:D:174:ARG:HH11	1.39	0.87
1:C:174:ARG:HH11	1:C:174:ARG:CG	1.87	0.87
1:B:194:VAL:HG23	1:B:195:ALA:H	1.40	0.86
1:B:41:GLU:HG2	1:B:96:GLU:HB2	1.56	0.86
1:B:57:GLU:HG3	3:B:610:HOH:O	1.76	0.83
1:C:191:VAL:HG22	1:C:260:GLU:HG2	1.59	0.83
1:B:198:PRO:O	1:B:202:GLU:HG3	1.79	0.82
1:D:191:VAL:HG22	1:D:260:GLU:HG2	1.59	0.82
1:C:260:GLU:HB2	3:C:469:HOH:O	1.80	0.80
1:C:174:ARG:HG3	3:C:555:HOH:O	1.80	0.80
1:B:15:GLU:CG	1:C:230:PHE:HB2	2.12	0.79
1:B:112:THR:HG21	1:B:149:ILE:HD11	1.65	0.77
1:C:81:VAL:HG11	1:C:149:ILE:CD1	2.14	0.77
1:D:263:VAL:HG12	1:D:267:MET:CE	2.14	0.77
1:C:81:VAL:HG13	1:C:112:THR:HB	1.67	0.76
1:D:263:VAL:HG12	1:D:267:MET:HE3	1.68	0.74
1:C:174:ARG:NH1	1:C:175:ASP:OD1	2.19	0.72
1:D:260:GLU:HB2	3:D:485:HOH:O	1.90	0.72
1:D:6:ILE:HG22	1:D:254:TYR:CE2	2.24	0.72
1:D:95:ILE:HD11	1:D:117:ASP:HB2	1.71	0.71
1:C:22:LYS:O	1:C:25:GLN:HG2	1.90	0.71
1:B:194:VAL:HG23	1:B:195:ALA:N	2.05	0.71
1:D:30:ARG:O	1:D:34:GLU:HG2	1.91	0.71
1:D:41:GLU:CG	1:D:96:GLU:HB2	2.12	0.71
1:A:281:ARG:NH1	1:B:262:GLU:OE1	2.22	0.70
1:C:52:ARG:HG3	1:C:52:ARG:HH11	1.56	0.70
1:C:89:GLY:HA2	2:C:455:EPE:H62	1.71	0.70
1:A:262:GLU:OE1	1:B:281:ARG:NH1	2.22	0.70
1:A:242:GLU:HG2	1:A:243:ASN:ND2	2.07	0.69
1:B:196:PRO:HA	1:B:200:LEU:HD23	1.75	0.69
1:B:81:VAL:HG22	1:B:149:ILE:HG13	1.73	0.69
1:D:122:PRO:HG3	1:D:221:GLN:NE2	2.04	0.69
1:D:41:GLU:HG2	1:D:96:GLU:CB	2.13	0.69
1:D:81:VAL:HG11	1:D:149:ILE:CD1	2.23	0.68
1:B:225:ARG:HH11	1:B:225:ARG:HG2	1.57	0.68
1:D:207:LEU:HD21	1:D:254:TYR:HB3	1.74	0.68

Continued on next page...

Continued from previous page...

Atom-1	Atom-2	Interatomic distance (Å)	Clash overlap (Å)
1:C:122:PRO:HG3	1:C:221:GLN:HB3	1.75	0.68
1:C:174:ARG:HG2	1:C:174:ARG:NH1	1.96	0.67
1:B:174:ARG:HH11	1:B:174:ARG:CG	1.99	0.67
1:B:291:TYR:HA	1:B:297:ALA:HB3	1.77	0.67
1:C:1:MET:HG2	1:C:2:LEU:N	2.09	0.67
1:D:187:ILE:HD11	1:D:304:ILE:HD11	1.77	0.66
1:C:81:VAL:HG11	1:C:149:ILE:HD11	1.78	0.66
1:D:95:ILE:CD1	1:D:117:ASP:HB2	2.24	0.66
1:C:209:ILE:HD12	1:C:284:LEU:HD12	1.76	0.66
1:C:191:VAL:CG2	1:C:260:GLU:HG2	2.26	0.66
1:B:59:ARG:HH11	1:B:59:ARG:CG	2.09	0.66
1:B:174:ARG:CD	1:B:242:GLU:O	2.43	0.65
1:C:2:LEU:C	1:C:4:MET:H	1.99	0.65
1:D:242:GLU:HG2	1:D:243:ASN:ND2	2.12	0.65
1:C:173:ALA:O	1:C:178:GLU:HB2	1.96	0.64
1:D:81:VAL:CG1	1:D:112:THR:HB	2.27	0.64
1:A:22:LYS:HB2	1:A:25:GLN:HG3	1.78	0.64
1:B:15:GLU:HG3	1:C:230:PHE:HB2	1.77	0.64
1:D:81:VAL:HG13	1:D:112:THR:HB	1.80	0.64
1:B:174:ARG:HG2	1:B:174:ARG:NH1	2.01	0.64
1:B:174:ARG:HD2	1:B:242:GLU:O	1.98	0.64
1:B:30:ARG:NH1	1:B:31:GLU:OE2	2.32	0.63
1:C:80:PRO:HG3	1:C:153:LYS:HD2	1.80	0.63
1:D:211:ASP:O	1:D:215:MET:HG3	1.99	0.63
1:C:281:ARG:NH1	1:D:262:GLU:OE1	2.31	0.62
1:D:155:PHE:HE2	1:D:307:LEU:HB3	1.64	0.62
1:D:89:GLY:O	1:D:90:PHE:HB2	1.99	0.62
1:B:2:LEU:HD12	1:C:197:THR:CG2	2.29	0.62
1:B:55:ARG:NH2	1:B:57:GLU:OE1	2.34	0.61
1:D:122:PRO:CG	1:D:221:GLN:HE21	2.07	0.61
1:C:242:GLU:HG2	1:C:243:ASN:ND2	2.15	0.61
1:B:15:GLU:HG2	1:C:230:PHE:HB2	1.82	0.60
1:C:214:ILE:HG12	1:C:218:PHE:CE2	2.36	0.60
1:C:215:MET:HG2	2:C:455:EPE:H31	1.84	0.60
1:A:260:GLU:HB2	3:A:486:HOH:O	2.01	0.60
1:A:191:VAL:HG22	1:A:260:GLU:HG2	1.83	0.60
1:C:217:TRP:O	1:C:221:GLN:HG2	2.03	0.59
1:D:174:ARG:HG2	1:D:174:ARG:NH1	2.13	0.59
1:D:10:TYR:CE2	1:D:284:LEU:HG	2.37	0.59
1:C:291:TYR:HA	1:C:297:ALA:HB3	1.85	0.59
1:D:203:PHE:HD1	1:D:207:LEU:HD11	1.69	0.58

Continued on next page...

Continued from previous page...

Atom-1	Atom-2	Interatomic distance (Å)	Clash overlap (Å)
1:A:81:VAL:HG13	1:A:112:THR:HB	1.85	0.58
1:C:81:VAL:CG1	1:C:112:THR:HB	2.32	0.57
1:A:291:TYR:HA	1:A:297:ALA:HB3	1.85	0.57
1:C:226:GLU:OE2	1:C:229:LYS:HD2	2.04	0.57
1:D:263:VAL:HG12	1:D:267:MET:HE2	1.86	0.57
1:C:291:TYR:CG	1:C:292:PRO:HD3	2.40	0.57
1:B:81:VAL:HG22	1:B:149:ILE:CG1	2.35	0.57
1:C:13:LEU:HD23	1:C:17:PHE:CZ	2.40	0.57
1:B:194:VAL:CG2	1:B:195:ALA:H	2.15	0.56
1:B:59:ARG:HH11	1:B:59:ARG:HG3	1.70	0.56
1:C:258:ARG:HD2	1:C:259:ASP:OD1	2.05	0.56
1:A:155:PHE:HD1	1:A:155:PHE:N	2.03	0.56
1:B:190:VAL:CG2	2:B:455:EPE:H22	2.36	0.56
1:D:217:TRP:O	1:D:221:GLN:HG2	2.06	0.56
1:A:278:VAL:HG12	1:B:278:VAL:CG1	2.36	0.56
1:B:95:ILE:CD1	1:B:117:ASP:HB2	2.35	0.56
1:C:303:GLN:HG2	1:D:303:GLN:HG2	1.88	0.56
1:C:52:ARG:NH1	1:C:52:ARG:HG3	2.21	0.56
1:B:191:VAL:CG2	1:B:260:GLU:HG2	2.31	0.56
1:B:192:ASN:HD21	1:B:195:ALA:HB3	1.70	0.55
1:C:10:TYR:CE2	1:C:283:VAL:HA	2.41	0.55
1:C:43:ARG:NH1	3:C:490:HOH:O	2.40	0.55
1:D:55:ARG:NH1	1:D:74:GLN:OE1	2.39	0.55
1:C:124:HIS:NE2	3:C:544:HOH:O	2.30	0.55
1:C:129:ALA:HB2	3:C:513:HOH:O	2.06	0.55
1:A:217:TRP:O	1:A:221:GLN:HG2	2.06	0.55
1:A:62:LYS:HG2	3:A:543:HOH:O	2.06	0.55
1:A:43:ARG:HD3	3:A:494:HOH:O	2.07	0.54
1:A:55:ARG:HD2	3:A:572:HOH:O	2.06	0.54
1:C:164:ASN:HB2	1:C:190:VAL:O	2.07	0.54
1:D:190:VAL:HG21	2:D:455:EPE:H22	1.90	0.54
1:B:13:LEU:O	1:B:16:TYR:N	2.40	0.54
1:B:215:MET:HE3	1:B:257:LEU:HD21	1.88	0.54
1:A:278:VAL:CG1	1:B:278:VAL:CG1	2.85	0.54
1:C:30:ARG:O	1:C:34:GLU:HG3	2.06	0.54
1:A:119:ARG:HG2	1:A:124:HIS:CG	2.42	0.54
1:C:70:VAL:HG13	1:C:114:VAL:HG13	1.88	0.54
1:D:207:LEU:HD12	1:D:207:LEU:N	2.23	0.54
1:C:174:ARG:NH1	1:C:174:ARG:CG	2.55	0.54
1:D:7:ASP:OD1	1:D:9:VAL:HG23	2.08	0.54
1:B:59:ARG:NH1	1:B:59:ARG:HG3	2.21	0.54

Continued on next page...

Continued from previous page...

Atom-1	Atom-2	Interatomic distance (Å)	Clash overlap (Å)
1:B:203:PHE:O	1:B:256:PRO:HG3	2.08	0.53
1:B:2:LEU:HD12	1:C:197:THR:HG22	1.90	0.53
1:D:174:ARG:CG	1:D:174:ARG:HH11	2.16	0.53
1:A:119:ARG:HG2	1:A:124:HIS:CE1	2.44	0.53
1:D:164:ASN:HB2	1:D:190:VAL:O	2.08	0.53
1:A:119:ARG:HG2	1:A:124:HIS:CD2	2.44	0.53
1:C:165:LEU:O	1:C:169:VAL:HG23	2.08	0.52
1:A:155:PHE:CD1	1:A:155:PHE:N	2.76	0.52
1:C:218:PHE:HB2	2:C:455:EPE:H51	1.91	0.52
1:B:89:GLY:HA2	2:B:455:EPE:H91	1.91	0.52
1:D:81:VAL:HG11	1:D:149:ILE:HD13	1.90	0.52
1:B:225:ARG:NH1	1:B:225:ARG:HG2	2.25	0.52
1:C:187:ILE:HD11	1:C:304:ILE:HD11	1.91	0.52
1:C:223:PHE:O	3:C:529:HOH:O	2.19	0.52
1:A:17:PHE:HE1	1:A:290:TYR:OH	1.93	0.52
1:D:196:PRO:HA	1:D:200:LEU:HD23	1.93	0.51
1:D:174:ARG:NH2	1:D:240:ASP:O	2.42	0.51
1:D:190:VAL:HG23	1:D:257:LEU:HD13	1.93	0.51
1:A:257:LEU:HD11	2:A:455:EPE:H22	1.93	0.51
1:B:192:ASN:HD21	1:B:195:ALA:CA	2.23	0.51
1:D:291:TYR:HA	1:D:297:ALA:HB3	1.93	0.51
1:C:13:LEU:HB3	1:C:17:PHE:CE2	2.46	0.51
1:D:145:GLU:HA	3:D:506:HOH:O	2.09	0.51
1:C:215:MET:HE3	2:C:455:EPE:H32	1.91	0.51
1:D:174:ARG:CD	1:D:242:GLU:O	2.59	0.51
1:D:207:LEU:CD2	1:D:254:TYR:HB3	2.41	0.51
1:B:215:MET:HG2	2:B:455:EPE:H31	1.93	0.50
1:D:138:LYS:O	1:D:142:GLU:HG3	2.10	0.50
1:B:95:ILE:HD12	1:B:117:ASP:HB2	1.92	0.50
1:D:70:VAL:HG13	1:D:114:VAL:HG13	1.94	0.50
1:B:197:THR:O	1:B:201:LEU:HG	2.12	0.50
1:A:154:ILE:C	1:A:155:PHE:HD1	2.15	0.49
1:C:16:TYR:CZ	1:C:20:LEU:HD21	2.47	0.49
1:A:92:ILE:O	1:A:93:CYS:HB2	2.12	0.49
1:C:1:MET:HG2	1:C:2:LEU:H	1.76	0.49
1:D:190:VAL:HG21	2:D:455:EPE:H92	1.94	0.49
1:D:216:SER:O	1:D:220:GLU:HG3	2.13	0.49
1:D:191:VAL:CG2	1:D:260:GLU:HG2	2.37	0.49
1:A:4:MET:N	1:A:5:PRO:HD2	2.25	0.49
1:B:215:MET:CE	1:B:257:LEU:HD21	2.43	0.49
1:C:10:TYR:HE2	1:C:283:VAL:HA	1.77	0.49

Continued on next page...

Continued from previous page...

Atom-1	Atom-2	Interatomic distance (Å)	Clash overlap (Å)
1:B:192:ASN:ND2	1:B:195:ALA:O	2.46	0.48
1:C:81:VAL:HG13	1:C:149:ILE:HG12	1.96	0.48
1:D:193:PHE:HE2	2:D:455:EPE:H52	1.78	0.48
1:D:280:TYR:OH	1:D:303:GLN:NE2	2.46	0.48
1:A:191:VAL:CG2	1:A:260:GLU:HG2	2.43	0.48
1:A:209:ILE:HD12	3:A:606:HOH:O	2.12	0.48
1:B:15:GLU:HG3	1:C:230:PHE:CB	2.42	0.48
1:D:214:ILE:HG12	1:D:218:PHE:CE2	2.47	0.48
1:C:225:ARG:HB2	1:C:228:ASP:OD2	2.14	0.48
1:C:242:GLU:CG	1:C:243:ASN:ND2	2.77	0.48
1:D:75:GLN:O	1:D:76:LYS:HG2	2.13	0.48
1:C:64:ARG:NH1	1:C:131:TYR:CD1	2.82	0.48
1:B:2:LEU:HD22	1:C:237:ILE:CD1	2.34	0.48
1:C:192:ASN:O	3:C:461:HOH:O	2.20	0.48
1:B:190:VAL:HG22	2:B:455:EPE:H22	1.95	0.47
1:D:190:VAL:CG2	1:D:257:LEU:HD13	2.45	0.47
1:D:119:ARG:HH11	1:D:119:ARG:HG3	1.80	0.47
1:A:147:LEU:O	1:A:148:ARG:HB2	2.14	0.47
1:A:4:MET:HB2	1:A:5:PRO:HD3	1.96	0.47
1:B:196:PRO:HA	1:B:200:LEU:CD2	2.43	0.47
1:C:134:TYR:OH	1:C:138:LYS:HD2	2.14	0.47
1:B:192:ASN:HD21	1:B:195:ALA:N	2.12	0.47
1:B:139:TRP:CZ3	1:B:147:LEU:HD11	2.49	0.47
1:B:191:VAL:HG22	1:B:260:GLU:CG	2.34	0.47
1:B:1:MET:O	1:B:1:MET:CG	2.61	0.47
1:B:210:LEU:HG	1:B:215:MET:SD	2.55	0.47
1:D:64:ARG:NH1	1:D:131:TYR:CD2	2.83	0.47
1:D:81:VAL:HG11	1:D:149:ILE:HD11	1.96	0.47
1:A:36:ILE:HG13	1:A:40:TYR:CE2	2.50	0.47
1:B:291:TYR:CG	1:B:292:PRO:HD3	2.49	0.47
1:A:37:ASN:O	1:A:41:GLU:HG3	2.15	0.47
1:C:81:VAL:HG11	1:C:149:ILE:HD13	1.94	0.47
1:B:155:PHE:CD2	1:B:308:LEU:HD12	2.49	0.46
1:C:218:PHE:CB	2:C:455:EPE:H51	2.46	0.46
1:D:59:ARG:NH1	1:D:59:ARG:HG2	2.30	0.46
1:B:174:ARG:NH1	1:B:175:ASP:OD1	2.41	0.46
1:C:174:ARG:HH12	1:C:175:ASP:CG	2.17	0.46
1:D:81:VAL:HG13	1:D:149:ILE:HG12	1.97	0.46
1:C:278:VAL:HG13	1:D:278:VAL:CG1	2.45	0.46
1:A:160:SER:HB3	1:A:161:ALA:H	1.56	0.46
1:C:278:VAL:CG1	1:D:278:VAL:CG1	2.94	0.46

Continued on next page...

Continued from previous page...

Atom-1	Atom-2	Interatomic distance (Å)	Clash overlap (Å)
1:A:215:MET:SD	2:A:455:EPE:H32	2.56	0.46
1:B:2:LEU:CD2	1:C:237:ILE:HD13	2.35	0.46
1:B:81:VAL:HG13	1:B:112:THR:HB	1.97	0.45
1:C:280:TYR:OH	1:C:303:GLN:NE2	2.49	0.45
1:C:291:TYR:CD2	1:C:292:PRO:HD3	2.51	0.45
1:C:121:ALA:HB1	1:C:221:GLN:O	2.16	0.45
1:A:89:GLY:O	1:A:90:PHE:HB2	2.16	0.45
1:B:174:ARG:NH1	1:B:174:ARG:CG	2.65	0.45
1:B:192:ASN:ND2	1:B:195:ALA:HB3	2.31	0.45
1:C:122:PRO:O	1:C:123:GLU:C	2.55	0.45
1:D:22:LYS:C	1:D:24:ASP:N	2.68	0.45
1:B:22:LYS:HB2	1:B:25:GLN:HG3	1.98	0.45
1:A:195:ALA:HB2	1:D:1:MET:HE2	1.99	0.45
1:D:44:ASN:ND2	1:D:97:SER:O	2.50	0.45
1:C:2:LEU:C	1:C:4:MET:N	2.67	0.45
1:A:80:PRO:HG3	1:A:153:LYS:HD2	1.98	0.45
1:D:64:ARG:CZ	1:D:131:TYR:CD2	2.99	0.45
1:D:185:ILE:HG21	1:D:304:ILE:HG12	1.98	0.45
1:B:165:LEU:O	1:B:169:VAL:HG23	2.17	0.44
1:C:284:LEU:N	1:C:284:LEU:HD23	2.33	0.44
1:B:112:THR:CG2	1:B:149:ILE:HD11	2.42	0.44
1:D:263:VAL:CG1	1:D:267:MET:HE2	2.47	0.44
1:D:59:ARG:HG2	1:D:59:ARG:HH11	1.83	0.44
1:D:76:LYS:HA	1:D:77:PRO:HD3	1.76	0.44
1:C:155:PHE:CE2	1:C:308:LEU:HD23	2.52	0.44
1:A:215:MET:HG2	2:A:455:EPE:H31	1.99	0.44
1:D:139:TRP:CZ3	1:D:147:LEU:HD11	2.52	0.44
1:D:174:ARG:CG	1:D:174:ARG:NH1	2.76	0.44
1:D:263:VAL:CG1	1:D:267:MET:CE	2.93	0.44
1:A:138:LYS:HE2	1:A:142:GLU:OE2	2.18	0.44
1:D:259:ASP:O	1:D:263:VAL:HG23	2.17	0.44
1:B:137:THR:HG22	1:B:180:PHE:HE1	1.83	0.43
1:B:211:ASP:OD1	1:B:213:LYS:HB2	2.19	0.43
1:B:2:LEU:HD23	1:B:2:LEU:HA	1.62	0.43
1:D:64:ARG:NH1	1:D:131:TYR:CE2	2.87	0.43
1:D:258:ARG:HD3	1:D:279:ARG:HH21	1.83	0.43
1:A:195:ALA:CB	1:D:1:MET:HE2	2.49	0.43
1:A:278:VAL:CG1	1:B:278:VAL:HG12	2.47	0.43
1:B:194:VAL:CG2	1:B:195:ALA:N	2.75	0.43
1:B:75:GLN:HA	1:B:75:GLN:OE1	2.19	0.43
1:A:194:VAL:HG11	1:A:230:PHE:CD2	2.54	0.43

Continued on next page...

Continued from previous page...

Atom-1	Atom-2	Interatomic distance (Å)	Clash overlap (Å)
1:C:193:PHE:O	1:C:229:LYS:HD3	2.19	0.43
1:B:138:LYS:NZ	1:B:178:GLU:OE2	2.45	0.43
1:D:284:LEU:O	1:D:287:PHE:HB3	2.18	0.43
1:B:3:ASP:O	1:B:4:MET:C	2.57	0.43
1:D:81:VAL:HG22	1:D:149:ILE:HG23	2.01	0.43
1:A:71:ARG:HG2	1:A:73:TYR:CE1	2.54	0.43
1:B:192:ASN:HD21	1:B:195:ALA:CB	2.30	0.43
1:D:81:VAL:HG12	1:D:112:THR:HB	1.98	0.43
1:B:244:LEU:HD23	1:B:244:LEU:HA	1.88	0.42
1:C:1:MET:CG	1:C:2:LEU:N	2.77	0.42
1:A:245:PRO:HA	1:A:246:PRO:HD3	1.90	0.42
1:A:43:ARG:NE	3:A:537:HOH:O	2.52	0.42
1:C:23:PHE:HA	1:C:32:TYR:CD1	2.53	0.42
1:D:59:ARG:CG	1:D:59:ARG:HH11	2.33	0.42
1:C:269:ARG:NH2	1:D:8:PRO:HG2	2.35	0.42
1:A:159:ASP:HA	1:A:187:ILE:HB	2.01	0.42
1:B:41:GLU:CG	1:B:96:GLU:HB2	2.38	0.42
1:B:174:ARG:NH2	1:B:240:ASP:O	2.51	0.42
1:A:8:PRO:HG2	1:B:269:ARG:NH2	2.34	0.42
1:B:211:ASP:O	1:B:214:ILE:HG22	2.19	0.42
1:B:291:TYR:N	1:B:292:PRO:CD	2.82	0.42
1:B:187:ILE:HD11	1:B:304:ILE:HD11	2.01	0.42
1:C:190:VAL:O	1:C:190:VAL:HG13	2.19	0.42
1:A:255:ASP:OD1	1:A:256:PRO:HD2	2.20	0.42
1:B:159:ASP:HA	1:B:187:ILE:HB	2.01	0.42
1:D:174:ARG:HD2	1:D:242:GLU:O	2.19	0.42
1:B:225:ARG:HD3	3:B:631:HOH:O	2.20	0.42
1:D:22:LYS:C	1:D:24:ASP:H	2.22	0.42
1:D:28:SER:OG	1:D:31:GLU:HG3	2.19	0.42
1:D:89:GLY:O	1:D:90:PHE:CB	2.65	0.42
1:D:41:GLU:HB3	3:D:548:HOH:O	2.19	0.42
1:B:225:ARG:CG	1:B:225:ARG:NH1	2.81	0.42
1:B:155:PHE:HD2	1:B:308:LEU:CD1	2.33	0.41
1:C:254:TYR:HB2	1:C:284:LEU:HD22	2.00	0.41
1:A:74:GLN:HG3	1:A:112:THR:OG1	2.20	0.41
1:B:89:GLY:O	1:B:90:PHE:HB2	2.19	0.41
1:C:198:PRO:HG2	1:C:259:ASP:OD2	2.19	0.41
1:D:257:LEU:HD12	1:D:285:HIS:CE1	2.55	0.41
1:D:255:ASP:HA	1:D:256:PRO:HD3	1.91	0.41
1:A:85:TYR:O	1:A:162:GLY:HA3	2.21	0.41
1:C:85:TYR:O	1:C:162:GLY:HA3	2.21	0.41

Continued on next page...

Continued from previous page...

Atom-1	Atom-2	Interatomic distance (Å)	Clash overlap (Å)
1:D:165:LEU:O	1:D:169:VAL:HG23	2.20	0.41
1:C:107:ARG:NH2	1:D:311:ASP:O	2.52	0.41
1:D:258:ARG:HD2	1:D:259:ASP:OD1	2.20	0.41
1:C:127:PRO:CG	1:C:131:TYR:CE2	3.04	0.41
1:C:234:ALA:HA	3:C:472:HOH:O	2.21	0.41
1:B:310:PHE:O	1:B:311:ASP:OD1	2.38	0.41
1:D:2:LEU:O	1:D:2:LEU:HD12	2.20	0.41
1:C:42:GLU:HA	1:C:45:ARG:NH1	2.36	0.41
1:D:1:MET:HE2	1:D:11:TYR:HE1	1.86	0.41
1:B:174:ARG:HD3	1:B:242:GLU:O	2.19	0.41
1:C:185:ILE:HD11	1:C:307:LEU:HD12	2.02	0.41
1:A:164:ASN:HB2	1:A:190:VAL:O	2.20	0.40
1:B:255:ASP:HA	1:B:256:PRO:HD3	1.95	0.40
1:C:185:ILE:CD1	1:C:307:LEU:HD12	2.51	0.40
1:C:89:GLY:HA2	2:C:455:EPE:H91	2.03	0.40
1:D:160:SER:HB3	1:D:161:ALA:H	1.54	0.40
1:B:190:VAL:HG21	2:B:455:EPE:H22	2.04	0.40
1:C:262:GLU:OE1	1:D:281:ARG:NH1	2.55	0.40
1:D:190:VAL:CG2	1:D:257:LEU:CD1	3.00	0.40
1:A:255:ASP:OD2	1:A:285:HIS:ND1	2.54	0.40
1:A:94:SER:HB2	3:A:569:HOH:O	2.21	0.40
1:C:199:SER:HB3	1:C:259:ASP:CG	2.42	0.40
1:C:43:ARG:NH2	1:C:289:ASN:O	2.54	0.40
1:B:30:ARG:HG2	1:B:30:ARG:HH11	1.86	0.40
1:C:76:LYS:HA	1:C:77:PRO:HD3	1.83	0.40

There are no symmetry-related clashes.

5.3 Torsion angles ⓘ

5.3.1 Protein backbone ⓘ

In the following table, the Percentiles column shows the percent Ramachandran outliers of the chain as a percentile score with respect to all X-ray entries followed by that with respect to entries of similar resolution.

The Analysed column shows the number of residues for which the backbone conformation was analysed, and the total number of residues.

Mol	Chain	Analysed	Favoured	Allowed	Outliers	Percentiles
1	A	309/311 (99%)	293 (95%)	15 (5%)	1 (0%)	44 49

Continued on next page...

Continued from previous page...

Mol	Chain	Analysed	Favoured	Allowed	Outliers	Percentiles	
1	B	309/311 (99%)	293 (95%)	15 (5%)	1 (0%)	44	49
1	C	309/311 (99%)	288 (93%)	18 (6%)	3 (1%)	18	16
1	D	309/311 (99%)	283 (92%)	24 (8%)	2 (1%)	28	29
All	All	1236/1244 (99%)	1157 (94%)	72 (6%)	7 (1%)	28	29

All (7) Ramachandran outliers are listed below:

Mol	Chain	Res	Type
1	C	209	ILE
1	B	209	ILE
1	D	209	ILE
1	A	5	PRO
1	C	3	ASP
1	D	206	GLY
1	C	196	PRO

5.3.2 Protein sidechains ⓘ

In the following table, the Percentiles column shows the percent sidechain outliers of the chain as a percentile score with respect to all X-ray entries followed by that with respect to entries of similar resolution.

The Analysed column shows the number of residues for which the sidechain conformation was analysed, and the total number of residues.

Mol	Chain	Analysed	Rotameric	Outliers	Percentiles	
1	A	266/266 (100%)	259 (97%)	7 (3%)	51	64
1	B	266/266 (100%)	255 (96%)	11 (4%)	35	44
1	C	266/266 (100%)	254 (96%)	12 (4%)	32	39
1	D	266/266 (100%)	251 (94%)	15 (6%)	25	29
All	All	1064/1064 (100%)	1019 (96%)	45 (4%)	34	43

All (45) residues with a non-rotameric sidechain are listed below:

Mol	Chain	Res	Type
1	A	34	GLU
1	A	55	ARG
1	A	81	VAL
1	A	119	ARG

Continued on next page...

Continued from previous page...

Mol	Chain	Res	Type
1	A	127	PRO
1	A	155	PHE
1	A	160	SER
1	B	1	MET
1	B	22	LYS
1	B	34	GLU
1	B	59	ARG
1	B	81	VAL
1	B	127	PRO
1	B	149	ILE
1	B	160	SER
1	B	212	GLN
1	B	308	LEU
1	B	311	ASP
1	C	2	LEU
1	C	15	GLU
1	C	70	VAL
1	C	81	VAL
1	C	149	ILE
1	C	160	SER
1	C	174	ARG
1	C	208	TRP
1	C	211	ASP
1	C	212	GLN
1	C	219	SER
1	C	284	LEU
1	D	18	ASP
1	D	24	ASP
1	D	55	ARG
1	D	59	ARG
1	D	69	ARG
1	D	70	VAL
1	D	81	VAL
1	D	96	GLU
1	D	127	PRO
1	D	160	SER
1	D	189	PRO
1	D	192	ASN
1	D	219	SER
1	D	226	GLU
1	D	284	LEU

Some sidechains can be flipped to improve hydrogen bonding and reduce clashes. All (17) such

sidechains are listed below:

Mol	Chain	Res	Type
1	A	49	GLN
1	A	183	HIS
1	A	243	ASN
1	A	289	ASN
1	A	303	GLN
1	B	143	ASN
1	B	192	ASN
1	B	266	GLN
1	B	303	GLN
1	C	243	ASN
1	C	289	ASN
1	C	303	GLN
1	D	212	GLN
1	D	221	GLN
1	D	243	ASN
1	D	266	GLN
1	D	303	GLN

5.3.3 RNA [i](#)

There are no RNA molecules in this entry.

5.4 Non-standard residues in protein, DNA, RNA chains [i](#)

There are no non-standard protein/DNA/RNA residues in this entry.

5.5 Carbohydrates [i](#)

There are no carbohydrates in this entry.

5.6 Ligand geometry [i](#)

4 ligands are modelled in this entry.

In the following table, the Counts columns list the number of bonds (or angles) for which Mogul statistics could be retrieved, the number of bonds (or angles) that are observed in the model and the number of bonds (or angles) that are defined in the chemical component dictionary. The Link column lists molecule types, if any, to which the group is linked. The Z score for a bond length (or angle) is the number of standard deviations the observed value is removed from the expected

value. A bond length (or angle) with $|Z| > 2$ is considered an outlier worth inspection. RMSZ is the root-mean-square of all Z scores of the bond lengths (or angles).

Mol	Type	Chain	Res	Link	Bond lengths			Bond angles		
					Counts	RMSZ	$\# Z > 2$	Counts	RMSZ	$\# Z > 2$
2	EPE	A	455	1	12,14,15	1.23	1 (8%)	15,17,20	1.53	1 (6%)
2	EPE	B	455	1	12,14,15	1.28	1 (8%)	15,17,20	1.54	1 (6%)
2	EPE	C	455	1	12,14,15	1.06	1 (8%)	15,17,20	1.58	2 (13%)
2	EPE	D	455	1	12,14,15	1.63	2 (16%)	15,17,20	1.20	1 (6%)

In the following table, the Chirals column lists the number of chiral outliers, the number of chiral centers analysed, the number of these observed in the model and the number defined in the chemical component dictionary. Similar counts are reported in the Torsion and Rings columns. '-' means no outliers of that kind were identified.

Mol	Type	Chain	Res	Link	Chirals	Torsions	Rings
2	EPE	A	455	1	-	0/8/18/19	0/1/1/1
2	EPE	B	455	1	-	0/8/18/19	0/1/1/1
2	EPE	C	455	1	-	0/8/18/19	0/1/1/1
2	EPE	D	455	1	-	0/8/18/19	0/1/1/1

All (5) bond length outliers are listed below:

Mol	Chain	Res	Type	Atoms	Z	Observed(Å)	Ideal(Å)
2	C	455	EPE	C7-N4	2.58	1.53	1.47
2	A	455	EPE	C7-N4	2.83	1.54	1.47
2	D	455	EPE	C9-N1	2.95	1.54	1.47
2	B	455	EPE	C7-N4	3.11	1.54	1.47
2	D	455	EPE	C7-N4	3.55	1.55	1.47

All (5) bond angle outliers are listed below:

Mol	Chain	Res	Type	Atoms	Z	Observed(°)	Ideal(°)
2	C	455	EPE	C10-C9-N1	-3.09	106.04	113.17
2	D	455	EPE	O1S-S-C10	3.33	111.77	105.47
2	C	455	EPE	O1S-S-C10	4.34	113.69	105.47
2	B	455	EPE	O1S-S-C10	4.92	114.79	105.47
2	A	455	EPE	O1S-S-C10	5.19	115.29	105.47

There are no chirality outliers.

There are no torsion outliers.

There are no ring outliers.

4 monomers are involved in 17 short contacts:

Mol	Chain	Res	Type	Clashes	Symm-Clashes
2	A	455	EPE	3	0
2	B	455	EPE	5	0
2	C	455	EPE	6	0
2	D	455	EPE	3	0

5.7 Other polymers [i](#)

There are no such residues in this entry.

5.8 Polymer linkage issues [i](#)

There are no chain breaks in this entry.

6 Fit of model and data ⓘ

6.1 Protein, DNA and RNA chains ⓘ

In the following table, the column labelled ‘#RSRZ > 2’ contains the number (and percentage) of RSRZ outliers, followed by percent RSRZ outliers for the chain as percentile scores relative to all X-ray entries and entries of similar resolution. The OWAB column contains the minimum, median, 95th percentile and maximum values of the occupancy-weighted average B-factor per residue. The column labelled ‘Q < 0.9’ lists the number of (and percentage) of residues with an average occupancy less than 0.9.

Mol	Chain	Analysed	<RSRZ>	#RSRZ>2	OWAB(Å ²)	Q<0.9
1	A	309/311 (99%)	0.02	2 (0%) 89 88	24, 34, 53, 64	9 (2%)
1	B	308/311 (99%)	0.12	9 (2%) 52 50	25, 36, 58, 76	5 (1%)
1	C	307/311 (98%)	0.39	14 (4%) 33 32	28, 45, 64, 82	11 (3%)
1	D	311/311 (100%)	0.33	19 (6%) 22 21	32, 47, 66, 82	13 (4%)
All	All	1235/1244 (99%)	0.21	44 (3%) 43 41	24, 41, 62, 82	38 (3%)

All (44) RSRZ outliers are listed below:

Mol	Chain	Res	Type	RSRZ
1	C	209	ILE	7.3
1	D	209	ILE	6.8
1	D	207	LEU	6.4
1	B	201	LEU	6.1
1	B	209	ILE	4.8
1	D	194	VAL	4.6
1	D	208	TRP	4.5
1	A	3	ASP	4.3
1	B	1	MET	4.3
1	C	2	LEU	4.1
1	C	3	ASP	4.0
1	C	1	MET	3.6
1	C	205	GLU	3.5
1	C	235	SER	3.5
1	C	4	MET	3.4
1	D	3	ASP	3.3
1	D	206	GLY	3.3
1	D	225	ARG	3.2
1	D	66	GLY	3.1
1	D	1	MET	3.1
1	C	11	TYR	2.8

Continued on next page...

Continued from previous page...

Mol	Chain	Res	Type	RSRZ
1	B	195	ALA	2.6
1	C	195	ALA	2.6
1	C	240	ASP	2.6
1	C	210	LEU	2.4
1	D	201	LEU	2.4
1	B	210	LEU	2.3
1	D	237	ILE	2.3
1	D	311	ASP	2.3
1	B	4	MET	2.2
1	D	238	PHE	2.2
1	D	214	ILE	2.2
1	B	212	GLN	2.2
1	C	204	GLY	2.2
1	C	126	PHE	2.1
1	C	232	PRO	2.1
1	D	213	LYS	2.1
1	D	14	ALA	2.1
1	B	202	GLU	2.1
1	D	217	TRP	2.1
1	A	4	MET	2.0
1	D	4	MET	2.0
1	B	197	THR	2.0
1	D	144	ALA	2.0

6.2 Non-standard residues in protein, DNA, RNA chains [i](#)

There are no non-standard protein/DNA/RNA residues in this entry.

6.3 Carbohydrates [i](#)

There are no carbohydrates in this entry.

6.4 Ligands [i](#)

In the following table, the Atoms column lists the number of modelled atoms in the group and the number defined in the chemical component dictionary. LLDF column lists the quality of electron density of the group with respect to its neighbouring residues in protein, DNA or RNA chains. The B-factors column lists the minimum, median, 95th percentile and maximum values of B factors of atoms in the group. The column labelled 'Q < 0.9' lists the number of atoms with occupancy less than 0.9.

Mol	Type	Chain	Res	Atoms	RSCC	RSR	LLDF	B-factors(\AA^2)	Q<0.9
2	EPE	A	455	14/15	0.74	0.29	9.27	54,56,58,58	3
2	EPE	C	455	14/15	0.81	0.46	7.05	60,65,65,65	3
2	EPE	D	455	14/15	0.62	0.32	5.13	60,67,67,67	3
2	EPE	B	455	14/15	0.77	0.23	2.03	55,60,61,61	3

6.5 Other polymers [i](#)

There are no such residues in this entry.