



Full wwPDB X-ray Structure Validation Report ⓘ

Feb 14, 2017 – 08:04 am GMT

PDB ID : 5JJR
Title : Dengue 3 NS5 protein with compound 29
Authors : Lescar, J.; El Sahili, A.
Deposited on : 2016-04-25
Resolution : 1.99 Å(reported)

This is a Full wwPDB X-ray Structure Validation Report for a publicly released PDB entry.

We welcome your comments at validation@mail.wwpdb.org

A user guide is available at

<http://wwpdb.org/validation/2016/XrayValidationReportHelp>

with specific help available everywhere you see the ⓘ symbol.

The following versions of software and data (see [references ⓘ](#)) were used in the production of this report:

MolProbity : 4.02b-467
Mogul : 1.7.2 (RC1), CSD as538be (2017)
Xtriage (Phenix) : 1.9-1692
EDS : trunk28620
Percentile statistics : 20161228.v01 (using entries in the PDB archive December 28th 2016)
Refmac : 5.8.0135
CCP4 : 6.5.0
Ideal geometry (proteins) : Engh & Huber (2001)
Ideal geometry (DNA, RNA) : Parkinson et al. (1996)
Validation Pipeline (wwPDB-VP) : recalc28949

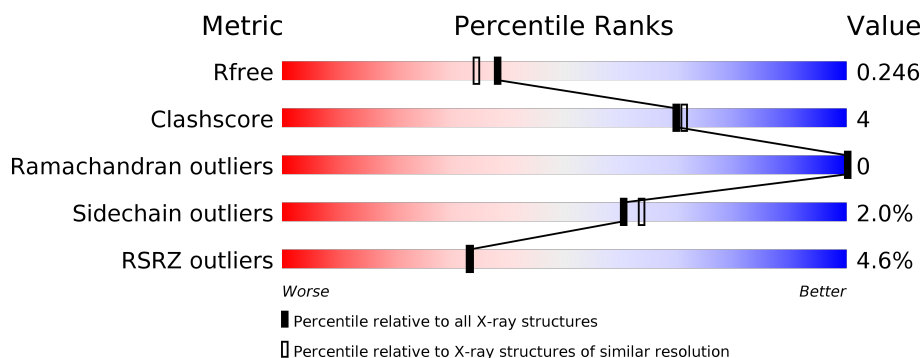
1 Overall quality at a glance

The following experimental techniques were used to determine the structure:

X-RAY DIFFRACTION

The reported resolution of this entry is 1.99 Å.

Percentile scores (ranging between 0-100) for global validation metrics of the entry are shown in the following graphic. The table shows the number of entries on which the scores are based.



Metric	Whole archive (#Entries)	Similar resolution (#Entries, resolution range(Å))
R_{free}	100719	6609 (2.00-2.00)
Clashscore	112137	7775 (2.00-2.00)
Ramachandran outliers	110173	7679 (2.00-2.00)
Sidechain outliers	110143	7678 (2.00-2.00)
RSRZ outliers	101464	6696 (2.00-2.00)

The table below summarises the geometric issues observed across the polymeric chains and their fit to the electron density. The red, orange, yellow and green segments on the lower bar indicate the fraction of residues that contain outliers for ≥ 3 , 2, 1 and 0 types of geometric quality criteria. A grey segment represents the fraction of residues that are not modelled. The numeric value for each fraction is indicated below the corresponding segment, with a dot representing fractions $\leq 5\%$. The upper red bar (where present) indicates the fraction of residues that have poor fit to the electron density. The numeric value is given above the bar.

Mol	Chain	Length	Quality of chain
1	A	892	

The following table lists non-polymeric compounds, carbohydrate monomers and non-standard residues in protein, DNA, RNA chains that are outliers for geometric or electron-density-fit criteria:

Mol	Type	Chain	Res	Chirality	Geometry	Clashes	Electron density
5	EDO	A	1007	-	-	-	X
5	EDO	A	1011	-	-	-	X

Continued on next page...

Continued from previous page...

Mol	Type	Chain	Res	Chirality	Geometry	Clashes	Electron density
5	EDO	A	1012	-	-	-	X
5	EDO	A	1013	-	-	-	X
7	PEG	A	1008	-	-	-	X
7	PEG	A	1010	-	-	X	X
7	PEG	A	1014	-	-	-	X

2 Entry composition

There are 8 unique types of molecules in this entry. The entry contains 7452 atoms, of which 0 are hydrogens and 0 are deuteriums.

In the tables below, the ZeroOcc column contains the number of atoms modelled with zero occupancy, the AltConf column contains the number of residues with at least one atom in alternate conformation and the Trace column contains the number of residues modelled with at most 2 atoms.

- Molecule 1 is a protein called Genome polyprotein.

Mol	Chain	Residues	Atoms					ZeroOcc	AltConf	Trace
1	A	845	Total	C	N	O	S	0	4	0
			6869	4337	1231	1254	47			

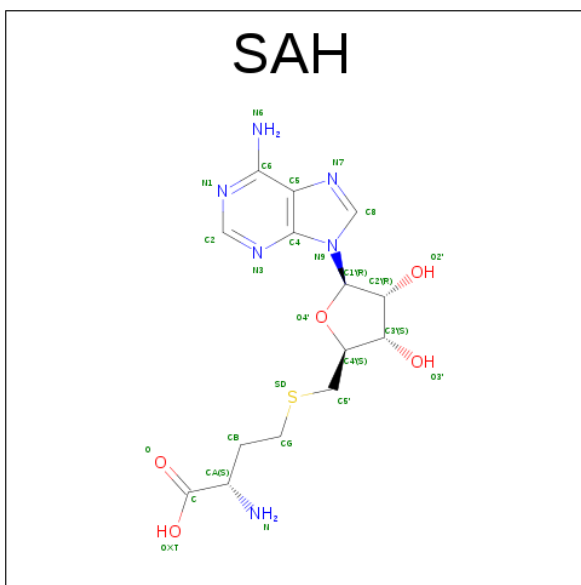
There are 3 discrepancies between the modelled and reference sequences:

Chain	Residue	Modelled	Actual	Comment	Reference
A	5	MET	GLN	engineered mutation	UNP Q6DLV0
A	72	ILE	VAL	engineered mutation	UNP Q6DLV0
A	374	GLU	GLY	engineered mutation	UNP Q6DLV0

- Molecule 2 is ZINC ION (three-letter code: ZN) (formula: Zn).

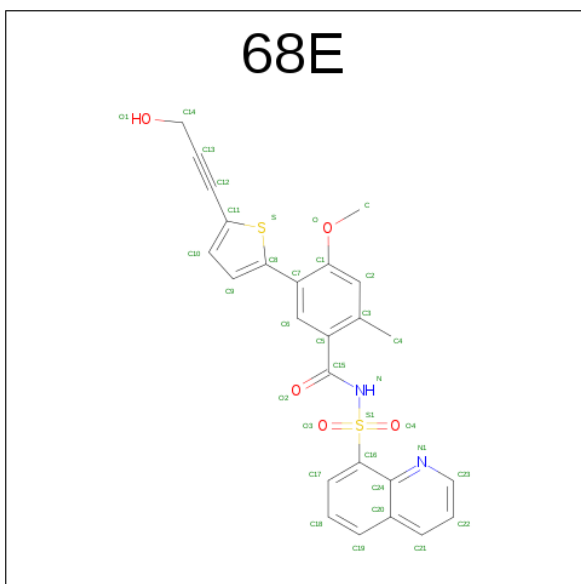
Mol	Chain	Residues	Atoms		ZeroOcc	AltConf
2	A	2	Total	Zn	0	0
			2	2		

- Molecule 3 is S-ADENOSYL-L-HOMOCYSTEINE (three-letter code: SAH) (formula: C₁₄H₂₀N₆O₅S).



Mol	Chain	Residues	Atoms					ZeroOcc	AltConf
3	A	1	Total	C	N	O	S	0	0
			26	14	6	5	1		

- Molecule 4 is 5-[5-(3-hydroxyprop-1-yn-1-yl)thiophen-2-yl]-4-methoxy-2-methyl-N-[(quinolin-8-yl)sulfonyl]benzamide (three-letter code: 68E) (formula: $C_{25}H_{20}N_2O_5S_2$).



Mol	Chain	Residues	Atoms					ZeroOcc	AltConf
4	A	1	Total	C	N	O	S	0	0
			34	25	2	5	2		

- Molecule 5 is 1,2-ETHANEDIOL (three-letter code: EDO) (formula: $C_2H_6O_2$).



Mol	Chain	Residues	Atoms			ZeroOcc	AltConf
5	A	1	Total	C	O	0	0
			4	2	2		
5	A	1	Total	C	O	0	0
			4	2	2		
5	A	1	Total	C	O	0	0
			4	2	2		
5	A	1	Total	C	O	0	0
			4	2	2		
5	A	1	Total	C	O	0	0
			4	2	2		

- Molecule 6 is MAGNESIUM ION (three-letter code: MG) (formula: Mg).

Mol	Chain	Residues	Atoms		ZeroOcc	AltConf
6	A	1	Total	Mg	0	0
			1	1		

- Molecule 7 is DI(HYDROXYETHYL)ETHER (three-letter code: PEG) (formula: C₄H₁₀O₃).



Mol	Chain	Residues	Atoms			ZeroOcc	AltConf
7	A	1	Total	C	O	0	0
			7	4	3		
7	A	1	Total	C	O	0	0
			7	4	3		
7	A	1	Total	C	O	0	0
			7	4	3		

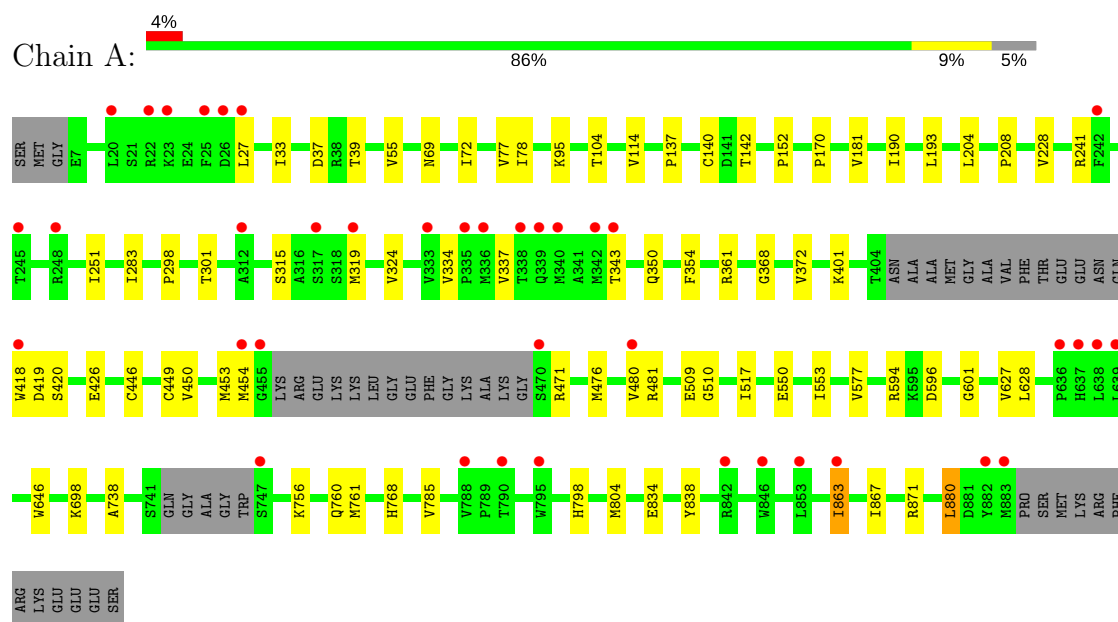
- Molecule 8 is water.

Mol	Chain	Residues	Atoms		ZeroOcc	AltConf
8	A	475	Total	O	0	0
			475	475		

3 Residue-property plots [i](#)

These plots are drawn for all protein, RNA and DNA chains in the entry. The first graphic for a chain summarises the proportions of the various outlier classes displayed in the second graphic. The second graphic shows the sequence view annotated by issues in geometry and electron density. Residues are color-coded according to the number of geometric quality criteria for which they contain at least one outlier: green = 0, yellow = 1, orange = 2 and red = 3 or more. A red dot above a residue indicates a poor fit to the electron density ($RSRZ > 2$). Stretches of 2 or more consecutive residues without any outlier are shown as a green connector. Residues present in the sample, but not in the model, are shown in grey.

• Molecule 1: Genome polypeptide



4 Data and refinement statistics

Property	Value	Source
Space group	P 21 21 2	Depositor
Cell constants a, b, c, α , β , γ	94.60Å 150.37Å 69.14Å 90.00° 90.00° 90.00°	Depositor
Resolution (Å)	47.30 – 1.99 47.30 – 1.99	Depositor EDS
% Data completeness (in resolution range)	99.3 (47.30-1.99) 99.0 (47.30-1.99)	Depositor EDS
R_{merge}	0.16	Depositor
R_{sym}	(Not available)	Depositor
$\langle I/\sigma(I) \rangle$ ¹	1.87 (at 1.98Å)	Xtriage
Refinement program	BUSTER 2.10.0	Depositor
R, R_{free}	0.179 , 0.225 0.194 , 0.246	Depositor DCC
R_{free} test set	3397 reflections (5.26%)	DCC
Wilson B-factor (Å ²)	16.8	Xtriage
Anisotropy	0.710	Xtriage
Bulk solvent k_{sol} (e/Å ³), B_{sol} (Å ²)	0.35 , 56.8	EDS
L-test for twinning ²	$\langle L \rangle = 0.46$, $\langle L^2 \rangle = 0.29$	Xtriage
Estimated twinning fraction	No twinning to report.	Xtriage
F_o, F_c correlation	0.94	EDS
Total number of atoms	7452	wwPDB-VP
Average B, all atoms (Å ²)	23.0	wwPDB-VP

Xtriage's analysis on translational NCS is as follows: *The largest off-origin peak in the Patterson function is 3.73% of the height of the origin peak. No significant pseudotranslation is detected.*

¹Intensities estimated from amplitudes.

²Theoretical values of $\langle |L| \rangle$, $\langle L^2 \rangle$ for acentric reflections are 0.5, 0.333 respectively for untwinned datasets, and 0.375, 0.2 for perfectly twinned datasets.

5 Model quality

5.1 Standard geometry

Bond lengths and bond angles in the following residue types are not validated in this section: ZN, SAH, 68E, MG, EDO, PEG

The Z score for a bond length (or angle) is the number of standard deviations the observed value is removed from the expected value. A bond length (or angle) with $|Z| > 5$ is considered an outlier worth inspection. RMSZ is the root-mean-square of all Z scores of the bond lengths (or angles).

Mol	Chain	Bond lengths		Bond angles	
		RMSZ	$\# Z > 5$	RMSZ	$\# Z > 5$
1	A	0.51	0/7049	0.67	0/9538

There are no bond length outliers.

There are no bond angle outliers.

There are no chirality outliers.

There are no planarity outliers.

5.2 Too-close contacts

In the following table, the Non-H and H(model) columns list the number of non-hydrogen atoms and hydrogen atoms in the chain respectively. The H(added) column lists the number of hydrogen atoms added and optimized by MolProbity. The Clashes column lists the number of clashes within the asymmetric unit, whereas Symm-Clashes lists symmetry related clashes.

Mol	Chain	Non-H	H(model)	H(added)	Clashes	Symm-Clashes
1	A	6869	0	6801	58	0
2	A	2	0	0	0	0
3	A	26	0	19	0	0
4	A	34	0	0	1	0
5	A	24	0	36	6	0
6	A	1	0	0	0	0
7	A	21	0	30	8	0
8	A	475	0	0	4	0
All	All	7452	0	6886	58	0

The all-atom clashscore is defined as the number of clashes found per 1000 atoms (including hydrogen atoms). The all-atom clashscore for this structure is 4.

All (58) close contacts within the same asymmetric unit are listed below, sorted by their clash

magnitude.

Atom-1	Atom-2	Interatomic distance (Å)	Clash overlap (Å)
1:A:241:ARG:HH22	7:A:1010:PEG:H32	0.98	1.10
1:A:476:MET:O	1:A:480:VAL:HG23	1.68	0.92
1:A:241:ARG:NH2	7:A:1010:PEG:H32	1.84	0.91
1:A:55:VAL:HG21	1:A:114:VAL:HB	1.59	0.85
1:A:804:MET:HE3	8:A:1146:HOH:O	1.82	0.78
1:A:69:ASN:HA	1:A:72:ILE:HD11	1.66	0.77
1:A:72:ILE:HD12	5:A:1012:EDO:H11	1.67	0.77
1:A:509:GLU:HG2	1:A:517:ILE:HD11	1.68	0.74
1:A:241:ARG:HH22	7:A:1010:PEG:C3	1.90	0.72
1:A:33:ILE:HA	7:A:1010:PEG:H42	1.72	0.70
1:A:449:CYS:HB3	1:A:480:VAL:HG13	1.74	0.69
1:A:368:GLY:O	1:A:372:VAL:HG23	1.96	0.65
1:A:350:GLN:NE2	1:A:454:MET:O	2.32	0.63
1:A:298:PRO:HA	5:A:1013:EDO:H22	1.82	0.62
1:A:449:CYS:HA	1:A:480:VAL:HG22	1.82	0.62
1:A:480:VAL:HG21	8:A:1209:HOH:O	2.01	0.59
1:A:283:ILE:HD11	1:A:450:VAL:HG21	1.83	0.59
1:A:804:MET:CE	8:A:1146:HOH:O	2.45	0.59
1:A:867:ILE:HG22	1:A:871:ARG:HD2	1.87	0.57
1:A:480:VAL:CG1	1:A:481:ARG:NH2	2.68	0.56
1:A:453:MET:HE1	1:A:577:VAL:HG11	1.87	0.56
1:A:698:LYS:HG2	8:A:1108:HOH:O	2.04	0.56
1:A:372:VAL:HG21	1:A:628:LEU:HD11	1.88	0.55
1:A:298:PRO:HB3	5:A:1012:EDO:H22	1.88	0.54
1:A:95:LYS:HB3	5:A:1013:EDO:H21	1.89	0.53
1:A:39:THR:HG23	7:A:1014:PEG:H41	1.91	0.53
1:A:601:GLY:HA2	5:A:1009:EDO:H22	1.92	0.52
1:A:446:CYS:SG	1:A:449:CYS:HB2	2.49	0.52
1:A:627:VAL:HG21	1:A:646:TRP:CD1	2.45	0.52
1:A:354:PHE:HE2	1:A:453:MET:HE3	1.73	0.52
1:A:550:GLU:O	1:A:553:ILE:HG12	2.10	0.51
1:A:78:ILE:HD12	1:A:140:CYS:HB3	1.92	0.51
1:A:251:ILE:HD12	7:A:1014:PEG:H11	1.93	0.51
1:A:324:VAL:HG21	1:A:738:ALA:O	2.10	0.51
1:A:768:HIS:HA	1:A:838:TYR:HA	1.93	0.51
1:A:509:GLU:HG2	1:A:517:ILE:CD1	2.38	0.49
1:A:510:GLY:HA2	1:A:798:HIS:O	2.13	0.48
1:A:480:VAL:HG12	1:A:481:ARG:NH2	2.28	0.48
1:A:756:LYS:O	1:A:760:GLN:HG3	2.14	0.47
1:A:449:CYS:HA	1:A:480:VAL:CG2	2.44	0.47
1:A:37:ASP:HA	7:A:1014:PEG:H12	1.96	0.46

Continued on next page...

Continued from previous page...

Atom-1	Atom-2	Interatomic distance (Å)	Clash overlap (Å)
1:A:480:VAL:HG11	1:A:481:ARG:NH2	2.30	0.46
1:A:761:MET:HE1	4:A:1004:68E:C9	2.47	0.45
1:A:181:VAL:HG11	1:A:193:LEU:HD11	1.99	0.44
1:A:334[A]:VAL:HG23	1:A:337:VAL:HB	1.99	0.44
1:A:137:PRO:HG2	1:A:170:PRO:HB2	2.00	0.44
1:A:152:PRO:HA	5:A:1005:EDO:H22	2.00	0.44
1:A:354:PHE:HE2	1:A:453:MET:CE	2.31	0.43
1:A:301:THR:OG1	1:A:594:ARG:NH2	2.52	0.43
1:A:190:ILE:HG21	1:A:228:VAL:HG22	2.01	0.42
1:A:480:VAL:HG11	1:A:481:ARG:HH22	1.85	0.42
1:A:208:PRO:HB3	7:A:1010:PEG:H41	2.02	0.42
1:A:594:ARG:HG3	1:A:596:ASP:O	2.21	0.41
1:A:301:THR:O	1:A:361:ARG:NH2	2.54	0.41
1:A:863:ILE:HG23	1:A:867:ILE:HD11	2.03	0.41
1:A:77:VAL:HG22	1:A:142:THR:HB	2.03	0.41
1:A:785:VAL:HG21	1:A:880:LEU:HD13	2.03	0.41
1:A:449:CYS:CB	1:A:480:VAL:HG13	2.47	0.40

There are no symmetry-related clashes.

5.3 Torsion angles ⓘ

5.3.1 Protein backbone ⓘ

In the following table, the Percentiles column shows the percent Ramachandran outliers of the chain as a percentile score with respect to all X-ray entries followed by that with respect to entries of similar resolution.

The Analysed column shows the number of residues for which the backbone conformation was analysed, and the total number of residues.

Mol	Chain	Analysed	Favoured	Allowed	Outliers	Percentiles	
1	A	841/892 (94%)	824 (98%)	17 (2%)	0	100	100

There are no Ramachandran outliers to report.

5.3.2 Protein sidechains ⓘ

In the following table, the Percentiles column shows the percent sidechain outliers of the chain as a percentile score with respect to all X-ray entries followed by that with respect to entries of similar resolution.

The Analysed column shows the number of residues for which the sidechain conformation was analysed, and the total number of residues.

Mol	Chain	Analysed	Rotameric	Outliers	Percentiles	
1	A	750/781 (96%)	735 (98%)	15 (2%)	60	64

All (15) residues with a non-rotameric sidechain are listed below:

Mol	Chain	Res	Type
1	A	27	LEU
1	A	104	THR
1	A	204	LEU
1	A	315	SER
1	A	319	MET
1	A	343	THR
1	A	401	LYS
1	A	418	TRP
1	A	419	ASP
1	A	420	SER
1	A	426	GLU
1	A	471	ARG
1	A	834	GLU
1	A	863	ILE
1	A	880	LEU

Some sidechains can be flipped to improve hydrogen bonding and reduce clashes. All (3) such sidechains are listed below:

Mol	Chain	Res	Type
1	A	350	GLN
1	A	512	HIS
1	A	714	HIS

5.3.3 RNA ⓘ

There are no RNA molecules in this entry.

5.4 Non-standard residues in protein, DNA, RNA chains ⓘ

There are no non-standard protein/DNA/RNA residues in this entry.

5.5 Carbohydrates [i](#)

There are no carbohydrates in this entry.

5.6 Ligand geometry [i](#)

Of 14 ligands modelled in this entry, 3 are monoatomic - leaving 11 for Mogul analysis.

In the following table, the Counts columns list the number of bonds (or angles) for which Mogul statistics could be retrieved, the number of bonds (or angles) that are observed in the model and the number of bonds (or angles) that are defined in the chemical component dictionary. The Link column lists molecule types, if any, to which the group is linked. The Z score for a bond length (or angle) is the number of standard deviations the observed value is removed from the expected value. A bond length (or angle) with $|Z| > 2$ is considered an outlier worth inspection. RMSZ is the root-mean-square of all Z scores of the bond lengths (or angles).

Mol	Type	Chain	Res	Link	Bond lengths			Bond angles		
					Counts	RMSZ	# Z > 2	Counts	RMSZ	# Z > 2
3	SAH	A	1003	-	20,28,28	0.54	0	20,40,40	1.28	3 (15%)
4	68E	A	1004	-	33,37,37	3.72	12 (36%)	43,53,53	1.97	9 (20%)
5	EDO	A	1005	-	3,3,3	0.52	0	2,2,2	0.62	0
5	EDO	A	1007	-	3,3,3	0.67	0	2,2,2	0.26	0
7	PEG	A	1008	-	6,6,6	0.22	0	5,5,5	0.08	0
5	EDO	A	1009	-	3,3,3	0.60	0	2,2,2	0.06	0
7	PEG	A	1010	-	6,6,6	0.15	0	5,5,5	0.27	0
5	EDO	A	1011	-	3,3,3	0.61	0	2,2,2	0.31	0
5	EDO	A	1012	-	3,3,3	0.58	0	2,2,2	0.23	0
5	EDO	A	1013	-	3,3,3	0.56	0	2,2,2	0.26	0
7	PEG	A	1014	-	6,6,6	0.14	0	5,5,5	0.11	0

In the following table, the Chirals column lists the number of chiral outliers, the number of chiral centers analysed, the number of these observed in the model and the number defined in the chemical component dictionary. Similar counts are reported in the Torsion and Rings columns. '-' means no outliers of that kind were identified.

Mol	Type	Chain	Res	Link	Chirals	Torsions	Rings
3	SAH	A	1003	-	-	0/7/31/31	0/3/3/3
4	68E	A	1004	-	-	0/20/25/25	0/4/4/4
5	EDO	A	1005	-	-	0/1/1/1	0/0/0/0
5	EDO	A	1007	-	-	0/1/1/1	0/0/0/0
7	PEG	A	1008	-	-	0/4/4/4	0/0/0/0
5	EDO	A	1009	-	-	0/1/1/1	0/0/0/0
7	PEG	A	1010	-	-	0/4/4/4	0/0/0/0
5	EDO	A	1011	-	-	0/1/1/1	0/0/0/0

Continued on next page...

Continued from previous page...

Mol	Type	Chain	Res	Link	Chirals	Torsions	Rings
5	EDO	A	1012	-	-	0/1/1/1	0/0/0/0
5	EDO	A	1013	-	-	0/1/1/1	0/0/0/0
7	PEG	A	1014	-	-	0/4/4/4	0/0/0/0

All (12) bond length outliers are listed below:

Mol	Chain	Res	Type	Atoms	Z	Observed(Å)	Ideal(Å)
4	A	1004	68E	C7-C8	-12.35	1.36	1.48
4	A	1004	68E	C5-C15	-4.59	1.40	1.50
4	A	1004	68E	C4-C3	-4.59	1.42	1.51
4	A	1004	68E	C15-N	-2.84	1.35	1.39
4	A	1004	68E	C16-C24	-2.13	1.41	1.42
4	A	1004	68E	C14-C13	2.11	1.50	1.47
4	A	1004	68E	S1-N	2.17	1.68	1.64
4	A	1004	68E	C12-C13	2.66	1.22	1.19
4	A	1004	68E	C17-C16	2.70	1.40	1.37
4	A	1004	68E	C23-N1	4.54	1.41	1.32
4	A	1004	68E	O4-S1	9.31	1.53	1.43
4	A	1004	68E	O3-S1	10.16	1.54	1.43

All (12) bond angle outliers are listed below:

Mol	Chain	Res	Type	Atoms	Z	Observed(°)	Ideal(°)
4	A	1004	68E	O4-S1-O3	-8.31	108.91	119.55
3	A	1003	SAH	CB-CG-SD	-3.79	106.26	113.57
4	A	1004	68E	C15-N-S1	-3.20	119.37	123.44
4	A	1004	68E	C22-C23-N1	-2.99	119.33	123.93
4	A	1004	68E	C20-C24-N1	-2.30	119.90	122.58
3	A	1003	SAH	CG-CB-CA	-2.28	106.42	112.97
3	A	1003	SAH	C4'-O4'-C1'	-2.24	107.39	109.77
4	A	1004	68E	O2-C15-N	2.35	124.06	121.11
4	A	1004	68E	O4-S1-C16	2.45	112.38	108.05
4	A	1004	68E	C16-C24-C20	2.58	119.14	117.70
4	A	1004	68E	C23-N1-C24	3.42	121.39	117.31
4	A	1004	68E	C16-C24-N1	3.63	120.96	119.56

There are no chirality outliers.

There are no torsion outliers.

There are no ring outliers.

7 monomers are involved in 15 short contacts:

Mol	Chain	Res	Type	Clashes	Symm-Clashes
4	A	1004	68E	1	0
5	A	1005	EDO	1	0
5	A	1009	EDO	1	0
7	A	1010	PEG	5	0
5	A	1012	EDO	2	0
5	A	1013	EDO	2	0
7	A	1014	PEG	3	0

5.7 Other polymers [i](#)

There are no such residues in this entry.

5.8 Polymer linkage issues [i](#)

There are no chain breaks in this entry.

6 Fit of model and data ⓘ

6.1 Protein, DNA and RNA chains ⓘ

In the following table, the column labelled ‘#RSRZ> 2’ contains the number (and percentage) of RSRZ outliers, followed by percent RSRZ outliers for the chain as percentile scores relative to all X-ray entries and entries of similar resolution. The OWAB column contains the minimum, median, 95th percentile and maximum values of the occupancy-weighted average B-factor per residue. The column labelled ‘Q< 0.9’ lists the number of (and percentage) of residues with an average occupancy less than 0.9.

Mol	Chain	Analysed	<RSRZ>	#RSRZ>2	OWAB(Å ²)	Q<0.9
1	A	845/892 (94%)	0.03	39 (4%) 33 33	7, 20, 46, 88	4 (0%)

All (39) RSRZ outliers are listed below:

Mol	Chain	Res	Type	RSRZ
1	A	637	HIS	6.4
1	A	636	PRO	6.0
1	A	846	TRP	4.9
1	A	883	MET	4.7
1	A	470	SER	4.3
1	A	795	TRP	4.3
1	A	638	LEU	4.2
1	A	333	VAL	3.7
1	A	22	ARG	3.7
1	A	342	MET	3.6
1	A	454	MET	3.6
1	A	418	TRP	3.5
1	A	480	VAL	3.3
1	A	343	THR	3.1
1	A	23	LYS	3.1
1	A	27	LEU	3.0
1	A	20	LEU	3.0
1	A	747	SER	2.9
1	A	790	THR	2.8
1	A	639	LEU	2.8
1	A	317	SER	2.8
1	A	863	ILE	2.7
1	A	338	THR	2.7
1	A	339	GLN	2.6
1	A	336	MET	2.6
1	A	842	ARG	2.5
1	A	312	ALA	2.5

Continued on next page...

Continued from previous page...

Mol	Chain	Res	Type	RSRZ
1	A	248	ARG	2.5
1	A	319	MET	2.5
1	A	882	TYR	2.4
1	A	455	GLY	2.4
1	A	245	THR	2.3
1	A	788	VAL	2.3
1	A	853	LEU	2.3
1	A	340	MET	2.2
1	A	26	ASP	2.2
1	A	242	PHE	2.1
1	A	335	PRO	2.1
1	A	25	PHE	2.0

6.2 Non-standard residues in protein, DNA, RNA chains [i](#)

There are no non-standard protein/DNA/RNA residues in this entry.

6.3 Carbohydrates [i](#)

There are no carbohydrates in this entry.

6.4 Ligands [i](#)

In the following table, the Atoms column lists the number of modelled atoms in the group and the number defined in the chemical component dictionary. LLDF column lists the quality of electron density of the group with respect to its neighbouring residues in protein, DNA or RNA chains. The B-factors column lists the minimum, median, 95th percentile and maximum values of B factors of atoms in the group. The column labelled 'Q < 0.9' lists the number of atoms with occupancy less than 0.9.

Mol	Type	Chain	Res	Atoms	RSCC	RSR	LLDF	B-factors(Å ²)	Q<0.9
7	PEG	A	1010	7/7	0.88	0.32	15.34	30,38,40,40	0
5	EDO	A	1012	4/4	0.59	0.38	11.84	74,74,75,76	0
5	EDO	A	1013	4/4	0.95	0.24	5.61	25,26,28,30	0
5	EDO	A	1007	4/4	0.90	0.17	3.56	29,31,34,35	0
5	EDO	A	1011	4/4	0.94	0.11	2.86	19,21,23,23	0
7	PEG	A	1014	7/7	0.84	0.23	2.80	34,36,39,41	0
7	PEG	A	1008	7/7	0.87	0.15	2.42	19,33,42,43	0
4	68E	A	1004	34/34	0.97	0.11	-0.03	13,19,39,41	0
5	EDO	A	1005	4/4	0.89	0.12	-0.17	29,32,35,39	0

Continued on next page...

Continued from previous page...

Mol	Type	Chain	Res	Atoms	RSCC	RSR	LLDF	B-factors(\AA^2)	Q<0.9
3	SAH	A	1003	26/26	0.96	0.09	-0.19	13,21,29,34	0
2	ZN	A	1001	1/1	0.99	0.07	-1.21	15,15,15,15	0
2	ZN	A	1002	1/1	1.00	0.05	-2.92	21,21,21,21	0
6	MG	A	1006	1/1	0.98	0.04	-7.07	19,19,19,19	0
5	EDO	A	1009	4/4	0.93	0.16	-	29,30,32,33	0

6.5 Other polymers [i](#)

There are no such residues in this entry.