



Full wwPDB X-ray Structure Validation Report ⓘ

Feb 14, 2017 – 09:54 am GMT

PDB ID : 4JUI
Title : crystal structure of tannase from from *Lactobacillus plantarum*
Authors : Ren, B.; Wu, M.; Wang, Q.; Peng, X.; Wen, H.; McKinstry, W.J.; Chen, Q.
Deposited on : 2013-03-24
Resolution : 1.70 Å(reported)

This is a Full wwPDB X-ray Structure Validation Report for a publicly released PDB entry.

We welcome your comments at validation@mail.wwpdb.org

A user guide is available at

<http://wwpdb.org/validation/2016/XrayValidationReportHelp>

with specific help available everywhere you see the ⓘ symbol.

The following versions of software and data (see [references ⓘ](#)) were used in the production of this report:

MolProbity : 4.02b-467
Mogul : 1.7.2 (RC1), CSD as538be (2017)
Xtriage (Phenix) : 1.9-1692
EDS : trunk28620
Percentile statistics : 20161228.v01 (using entries in the PDB archive December 28th 2016)
Refmac : 5.8.0135
CCP4 : 6.5.0
Ideal geometry (proteins) : Engh & Huber (2001)
Ideal geometry (DNA, RNA) : Parkinson et al. (1996)
Validation Pipeline (wwPDB-VP) : recalc28949

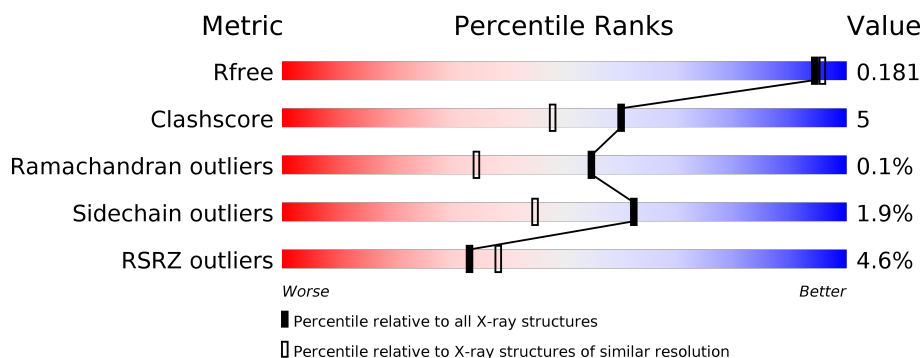
1 Overall quality at a glance

The following experimental techniques were used to determine the structure:

X-RAY DIFFRACTION

The reported resolution of this entry is 1.70 Å.

Percentile scores (ranging between 0-100) for global validation metrics of the entry are shown in the following graphic. The table shows the number of entries on which the scores are based.



Metric	Whole archive (#Entries)	Similar resolution (#Entries, resolution range(Å))
R_{free}	100719	3453 (1.70-1.70)
Clashscore	112137	3876 (1.70-1.70)
Ramachandran outliers	110173	3815 (1.70-1.70)
Sidechain outliers	110143	3815 (1.70-1.70)
RSRZ outliers	101464	3491 (1.70-1.70)

The table below summarises the geometric issues observed across the polymeric chains and their fit to the electron density. The red, orange, yellow and green segments on the lower bar indicate the fraction of residues that contain outliers for ≥ 3 , 2, 1 and 0 types of geometric quality criteria. A grey segment represents the fraction of residues that are not modelled. The numeric value for each fraction is indicated below the corresponding segment, with a dot representing fractions $\leq 5\%$. The upper red bar (where present) indicates the fraction of residues that have poor fit to the electron density. The numeric value is given above the bar.

Mol	Chain	Length	Quality of chain
1	A	470	<div> <div>6%</div> <div> <div></div> <div>90%</div> <div>10%</div> </div> </div>
1	B	470	<div> <div>3%</div> <div> <div></div> <div>91%</div> <div>9%</div> </div> </div>

The following table lists non-polymeric compounds, carbohydrate monomers and non-standard residues in protein, DNA, RNA chains that are outliers for geometric or electron-density-fit criteria:

Mol	Type	Chain	Res	Chirality	Geometry	Clashes	Electron density
2	EGR	A	501	-	-	-	X
2	EGR	B	501	-	-	-	X
4	PEG	A	507	-	-	-	X
5	PGE	A	504	-	-	X	X
5	PGE	B	502	-	-	-	X

2 Entry composition [i](#)

There are 6 unique types of molecules in this entry. The entry contains 8495 atoms, of which 0 are hydrogens and 0 are deuteriums.

In the tables below, the ZeroOcc column contains the number of atoms modelled with zero occupancy, the AltConf column contains the number of residues with at least one atom in alternate conformation and the Trace column contains the number of residues modelled with at most 2 atoms.

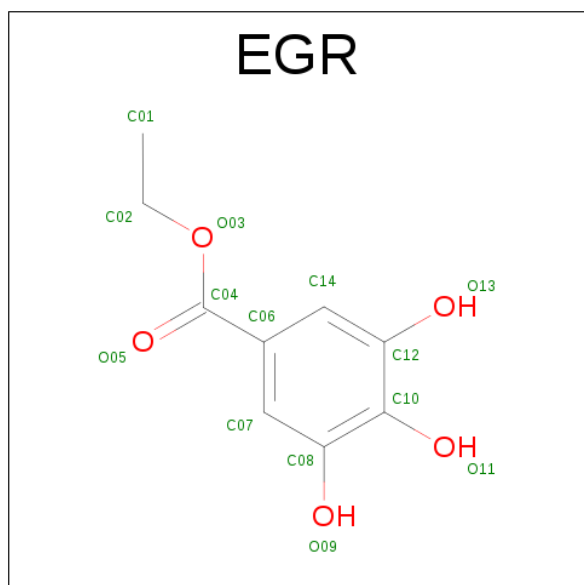
- Molecule 1 is a protein called Tannase.

Mol	Chain	Residues	Atoms					ZeroOcc	AltConf	Trace
1	A	470	Total	C	N	O	S	0	5	0
			3616	2292	629	686	9			
1	B	470	Total	C	N	O	S	0	8	0
			3630	2300	630	689	11			

There are 4 discrepancies between the modelled and reference sequences:

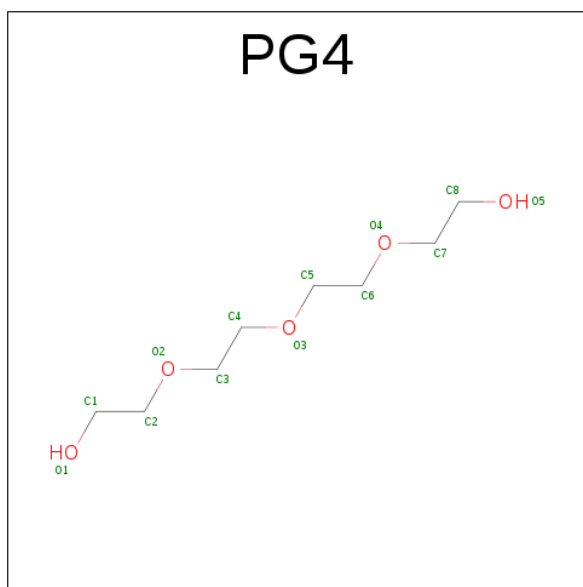
Chain	Residue	Modelled	Actual	Comment	Reference
A	0	SER	-	EXPRESSION TAG	UNP B3Y018
A	163	ALA	SER	ENGINEERED MUTATION	UNP B3Y018
B	0	SER	-	EXPRESSION TAG	UNP B3Y018
B	163	ALA	SER	ENGINEERED MUTATION	UNP B3Y018

- Molecule 2 is ETHYL 3,4,5-TRIHYDROXYBENZOATE (three-letter code: EGR) (formula: $C_9H_{10}O_5$).



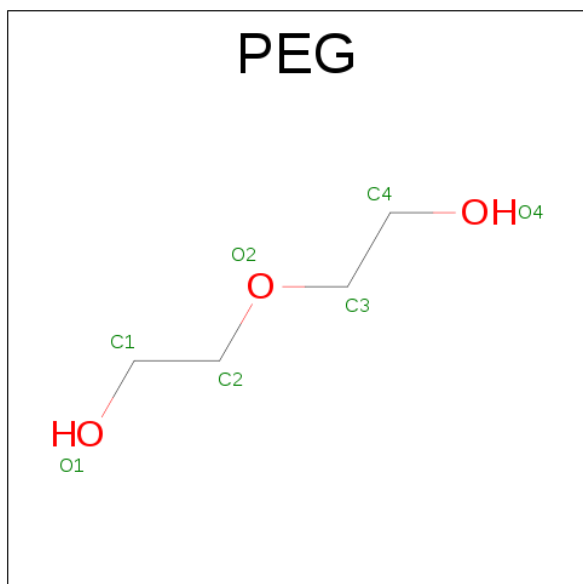
Mol	Chain	Residues	Atoms			ZeroOcc	AltConf
2	A	1	Total	C	O	0	0
			14	9	5		
2	B	1	Total	C	O	0	0
			14	9	5		

- Molecule 3 is TETRAETHYLENE GLYCOL (three-letter code: PG4) (formula: $C_8H_{18}O_5$).



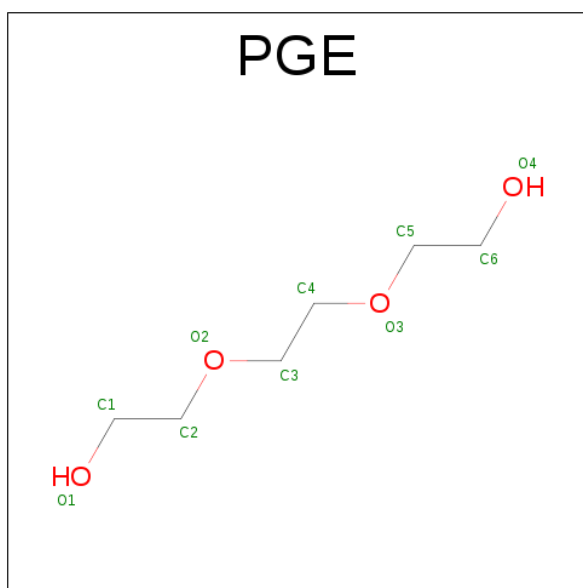
Mol	Chain	Residues	Atoms			ZeroOcc	AltConf
3	A	1	Total	C	O	0	0
			13	8	5		

- Molecule 4 is DI(HYDROXYETHYL)ETHER (three-letter code: PEG) (formula: $C_4H_{10}O_3$).



Mol	Chain	Residues	Atoms	ZeroOcc	AltConf
4	A	1	Total C O 7 4 3	0	0
4	A	1	Total C O 7 4 3	0	0
4	A	1	Total C O 7 4 3	0	0
4	A	1	Total C O 7 4 3	0	0
4	B	1	Total C O 7 4 3	0	0
4	B	1	Total C O 7 4 3	0	0
4	B	1	Total C O 7 4 3	0	0
4	B	1	Total C O 7 4 3	0	0

- Molecule 5 is TRIETHYLENE GLYCOL (three-letter code: PGE) (formula: $C_6H_{14}O_4$).



Mol	Chain	Residues	Atoms	ZeroOcc	AltConf
5	A	1	Total C O 10 6 4	0	0
5	B	1	Total C O 10 6 4	0	0

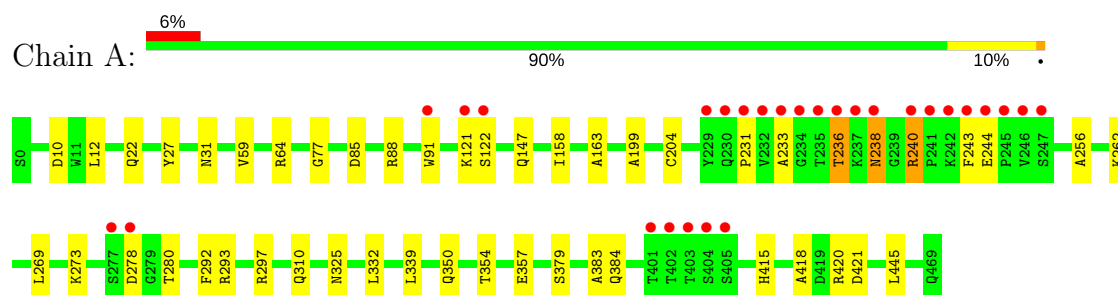
- Molecule 6 is water.

Mol	Chain	Residues	Atoms		ZeroOcc	AltConf
6	A	500	Total 500	O 500	0	0
6	B	632	Total 632	O 632	0	0

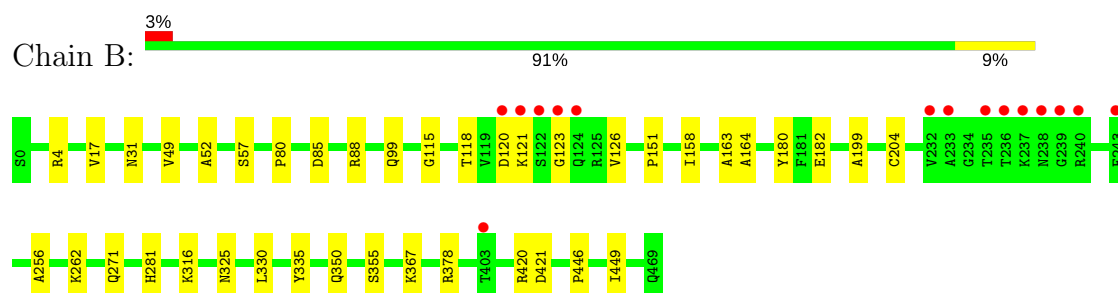
3 Residue-property plots [i](#)

These plots are drawn for all protein, RNA and DNA chains in the entry. The first graphic for a chain summarises the proportions of the various outlier classes displayed in the second graphic. The second graphic shows the sequence view annotated by issues in geometry and electron density. Residues are color-coded according to the number of geometric quality criteria for which they contain at least one outlier: green = 0, yellow = 1, orange = 2 and red = 3 or more. A red dot above a residue indicates a poor fit to the electron density ($RSRZ > 2$). Stretches of 2 or more consecutive residues without any outlier are shown as a green connector. Residues present in the sample, but not in the model, are shown in grey.

- Molecule 1: Tannase



- Molecule 1: Tannase



4 Data and refinement statistics

Property	Value	Source
Space group	P 1	Depositor
Cell constants a, b, c, α , β , γ	47.21Å 62.94Å 84.41Å 70.66° 85.49° 79.51°	Depositor
Resolution (Å)	19.52 – 1.70 19.52 – 1.70	Depositor EDS
% Data completeness (in resolution range)	91.4 (19.52-1.70) 81.9 (19.52-1.70)	Depositor EDS
R_{merge}	0.05	Depositor
R_{sym}	(Not available)	Depositor
$\langle I/\sigma(I) \rangle$ ¹	4.40 (at 1.70Å)	Xtriage
Refinement program	PHENIX (phenix.refine: 1.8.1_1168)	Depositor
R, R_{free}	0.153 , 0.180 0.154 , 0.181	Depositor DCC
R_{free} test set	1530 reflections (1.69%)	DCC
Wilson B-factor (Å ²)	14.6	Xtriage
Anisotropy	0.765	Xtriage
Bulk solvent k_{sol} (e/Å ³), B_{sol} (Å ²)	0.37 , 55.1	EDS
L-test for twinning ²	$\langle L \rangle = 0.49$, $\langle L^2 \rangle = 0.32$	Xtriage
Estimated twinning fraction	0.012 for -h,-k,-k+1	Xtriage
F_o, F_c correlation	0.96	EDS
Total number of atoms	8495	wwPDB-VP
Average B, all atoms (Å ²)	20.0	wwPDB-VP

Xtriage's analysis on translational NCS is as follows: *The largest off-origin peak in the Patterson function is 5.68% of the height of the origin peak. No significant pseudotranslation is detected.*

¹Intensities estimated from amplitudes.

²Theoretical values of $\langle |L| \rangle$, $\langle L^2 \rangle$ for acentric reflections are 0.5, 0.333 respectively for untwinned datasets, and 0.375, 0.2 for perfectly twinned datasets.

5 Model quality

5.1 Standard geometry

Bond lengths and bond angles in the following residue types are not validated in this section: EGR, PG4, PEG, PGE

The Z score for a bond length (or angle) is the number of standard deviations the observed value is removed from the expected value. A bond length (or angle) with $|Z| > 5$ is considered an outlier worth inspection. RMSZ is the root-mean-square of all Z scores of the bond lengths (or angles).

Mol	Chain	Bond lengths		Bond angles	
		RMSZ	# Z >5	RMSZ	# Z >5
1	A	0.31	0/3706	0.52	0/5057
1	B	0.33	0/3729	0.53	0/5087
All	All	0.32	0/7435	0.52	0/10144

There are no bond length outliers.

There are no bond angle outliers.

There are no chirality outliers.

There are no planarity outliers.

5.2 Too-close contacts

In the following table, the Non-H and H(model) columns list the number of non-hydrogen atoms and hydrogen atoms in the chain respectively. The H(added) column lists the number of hydrogen atoms added and optimized by MolProbity. The Clashes column lists the number of clashes within the asymmetric unit, whereas Symm-Clashes lists symmetry related clashes.

Mol	Chain	Non-H	H(model)	H(added)	Clashes	Symm-Clashes
1	A	3616	0	3550	42	0
1	B	3630	0	3568	34	0
2	A	14	0	10	4	0
2	B	14	0	10	2	0
3	A	13	0	18	2	0
4	A	28	0	40	3	0
4	B	28	0	40	2	0
5	A	10	0	14	7	0
5	B	10	0	14	2	0
6	A	500	0	0	14	0
6	B	632	0	0	12	0
All	All	8495	0	7264	77	0

The all-atom clashscore is defined as the number of clashes found per 1000 atoms (including hydrogen atoms). The all-atom clashscore for this structure is 5.

All (77) close contacts within the same asymmetric unit are listed below, sorted by their clash magnitude.

Atom-1	Atom-2	Interatomic distance (Å)	Clash overlap (Å)
1:A:310:GLN:OE1	6:A:1030:HOH:O	1.80	0.98
1:B:123:GLY:HA3	6:B:1091:HOH:O	1.76	0.85
1:A:325:ASN:ND2	6:A:1091:HOH:O	2.08	0.82
1:B:325:ASN:HB3	4:B:503:PEG:H11	1.62	0.81
1:A:31:ASN:OD1	6:A:823:HOH:O	1.98	0.81
1:A:350:GLN:NE2	6:A:944:HOH:O	2.08	0.80
1:A:262:LYS:HZ1	5:A:504:PGE:H5	1.46	0.80
1:A:236:THR:HG23	1:A:238:ASN:H	1.51	0.75
1:A:310:GLN:OE1	6:A:854:HOH:O	2.04	0.74
1:B:271:GLN:OE1	6:B:959:HOH:O	2.04	0.74
1:A:64:ARG:NH2	6:A:1076:HOH:O	2.08	0.70
1:B:350:GLN:NE2	6:B:1160:HOH:O	1.95	0.70
1:B:182:GLU:OE1	6:B:917:HOH:O	2.10	0.69
1:A:22:GLN:OE1	6:A:645:HOH:O	2.11	0.68
1:A:293:ARG:HH21	5:A:504:PGE:H1	1.59	0.68
1:B:4:ARG:NH2	6:B:1083:HOH:O	2.25	0.67
1:A:339:LEU:HD11	1:A:418:ALA:HA	1.79	0.65
4:A:506:PEG:H32	6:A:621:HOH:O	1.97	0.64
1:A:273:LYS:NZ	6:A:1001:HOH:O	2.31	0.63
1:A:383:ALA:H	3:A:502:PG4:H11	1.62	0.63
1:A:269[A]:LEU:HD21	1:A:292:PHE:CG	2.36	0.60
1:A:269[A]:LEU:HD21	1:A:292:PHE:CD2	2.37	0.59
1:A:293:ARG:HH12	4:A:507:PEG:H32	1.66	0.59
1:B:115:GLY:H	1:B:118[B]:THR:CG2	2.16	0.59
1:A:121:LYS:H	1:A:121:LYS:HD3	1.69	0.57
1:A:158:ILE:HG12	1:A:199:ALA:HB3	1.87	0.57
1:B:262:LYS:NZ	5:B:502:PGE:H3	2.20	0.57
1:A:85:ASP:HB3	1:A:88:ARG:HB2	1.88	0.56
1:B:115:GLY:H	1:B:118[B]:THR:HG23	1.71	0.56
1:A:147:GLN:HG3	6:A:1046:HOH:O	2.06	0.56
1:B:158:ILE:HG12	1:B:199:ALA:HB3	1.87	0.56
1:A:332:LEU:HG	5:A:504:PGE:H12	1.89	0.55
1:A:240:ARG:NH1	1:A:240:ARG:HB3	2.23	0.54
1:B:31:ASN:OD1	6:B:986:HOH:O	2.19	0.53
1:A:357:GLU:OE2	2:A:501:EGR:O09	2.15	0.53
1:B:271:GLN:HG3	6:B:1146:HOH:O	2.08	0.53
1:A:12:LEU:HB3	1:A:27:TYR:HB3	1.90	0.52

Continued on next page...

Continued from previous page...

Atom-1	Atom-2	Interatomic distance (Å)	Clash overlap (Å)
1:A:262:LYS:HZ1	5:A:504:PGE:C5	2.20	0.51
1:B:262:LYS:HZ1	5:B:502:PGE:H3	1.76	0.51
1:B:378:ARG:HD3	6:B:1187:HOH:O	2.10	0.51
1:A:244:GLU:OE2	6:A:912:HOH:O	2.19	0.51
1:B:120:ASP:HB3	1:B:126:VAL:HG11	1.93	0.50
1:A:293:ARG:HE	5:A:504:PGE:C3	2.25	0.49
1:A:256:ALA:HB1	1:B:256:ALA:HB1	1.95	0.49
2:A:501:EGR:H3	6:A:1057:HOH:O	2.12	0.49
1:B:52:ALA:HB1	1:B:57[B]:SER:HB3	1.95	0.48
1:B:85:ASP:HB3	1:B:88:ARG:HB2	1.94	0.47
1:B:330:LEU:HD11	1:B:335:TYR:HB2	1.96	0.47
1:B:180:TYR:CE1	4:B:506:PEG:H31	2.50	0.47
1:B:367:LYS:NZ	6:B:1183:HOH:O	2.47	0.47
1:B:446:PRO:HB2	1:B:449:ILE:HG13	1.97	0.47
1:A:59:VAL:HA	6:A:989:HOH:O	2.14	0.46
1:B:80:PRO:HG3	1:B:118[B]:THR:CG2	2.46	0.46
1:B:115:GLY:O	1:B:118[B]:THR:HG23	2.16	0.45
1:A:379:SER:HB3	3:A:502:PG4:H31	1.99	0.45
1:A:91:TRP:HB2	1:A:240:ARG:HB2	1.99	0.45
1:B:316:LYS:HE3	6:B:1152:HOH:O	2.17	0.45
1:B:80:PRO:HG3	1:B:118[B]:THR:HG22	1.97	0.45
1:B:163:ALA:HB1	2:B:501:EGR:C04	2.47	0.45
1:A:357:GLU:OE2	2:A:501:EGR:O11	2.30	0.45
1:A:297:ARG:HH22	4:A:507:PEG:H41	1.82	0.44
1:A:350:GLN:OE1	1:A:354:THR:OG1	2.34	0.44
1:A:384:GLN:HG2	6:A:1061:HOH:O	2.17	0.44
1:A:415:HIS:O	1:A:445:LEU:HA	2.18	0.44
1:B:163:ALA:HA	1:B:204:CYS:O	2.18	0.44
1:A:236:THR:HG21	1:A:240:ARG:NH2	2.32	0.43
1:A:231:PRO:HA	1:A:243:PHE:HA	2.00	0.43
1:B:120:ASP:HB3	1:B:126:VAL:CG1	2.48	0.43
1:B:49:VAL:HG21	1:B:151:PRO:HG2	2.01	0.43
1:B:164:ALA:HB2	2:B:501:EGR:H6	2.02	0.42
1:A:77:GLY:H	2:A:501:EGR:C04	2.32	0.42
1:B:118[B]:THR:HG22	6:B:667:HOH:O	2.19	0.42
1:B:17:VAL:HG21	1:B:99:GLN:HG2	2.02	0.42
1:A:163:ALA:HA	1:A:204:CYS:O	2.19	0.41
1:A:293:ARG:HE	5:A:504:PGE:H32	1.85	0.41
1:A:293:ARG:NH2	5:A:504:PGE:H1	2.32	0.41
1:B:123:GLY:HA3	6:B:994:HOH:O	2.21	0.40

There are no symmetry-related clashes.

5.3 Torsion angles

5.3.1 Protein backbone

In the following table, the Percentiles column shows the percent Ramachandran outliers of the chain as a percentile score with respect to all X-ray entries followed by that with respect to entries of similar resolution.

The Analysed column shows the number of residues for which the backbone conformation was analysed, and the total number of residues.

Mol	Chain	Analysed	Favoured	Allowed	Outliers	Percentiles	
1	A	473/470 (101%)	463 (98%)	9 (2%)	1 (0%)	51	31
1	B	476/470 (101%)	466 (98%)	10 (2%)	0	100	100
All	All	949/940 (101%)	929 (98%)	19 (2%)	1 (0%)	55	34

All (1) Ramachandran outliers are listed below:

Mol	Chain	Res	Type
1	A	233	ALA

5.3.2 Protein sidechains

In the following table, the Percentiles column shows the percent sidechain outliers of the chain as a percentile score with respect to all X-ray entries followed by that with respect to entries of similar resolution.

The Analysed column shows the number of residues for which the sidechain conformation was analysed, and the total number of residues.

Mol	Chain	Analysed	Rotameric	Outliers	Percentiles	
1	A	374/369 (101%)	365 (98%)	9 (2%)	54	35
1	B	377/369 (102%)	372 (99%)	5 (1%)	73	60
All	All	751/738 (102%)	737 (98%)	14 (2%)	62	45

All (14) residues with a non-rotameric sidechain are listed below:

Mol	Chain	Res	Type
1	A	10	ASP
1	A	122	SER
1	A	236	THR
1	A	238	ASN
1	A	240	ARG

Continued on next page...

Continued from previous page...

Mol	Chain	Res	Type
1	A	278	ASP
1	A	280	THR
1	A	420	ARG
1	A	421	ASP
1	B	121	LYS
1	B	281	HIS
1	B	355	SER
1	B	420	ARG
1	B	421	ASP

Some sidechains can be flipped to improve hydrogen bonding and reduce clashes. All (2) such sidechains are listed below:

Mol	Chain	Res	Type
1	B	31	ASN
1	B	271	GLN

5.3.3 RNA [i](#)

There are no RNA molecules in this entry.

5.4 Non-standard residues in protein, DNA, RNA chains [i](#)

There are no non-standard protein/DNA/RNA residues in this entry.

5.5 Carbohydrates [i](#)

There are no carbohydrates in this entry.

5.6 Ligand geometry [i](#)

13 ligands are modelled in this entry.

In the following table, the Counts columns list the number of bonds (or angles) for which Mogul statistics could be retrieved, the number of bonds (or angles) that are observed in the model and the number of bonds (or angles) that are defined in the chemical component dictionary. The Link column lists molecule types, if any, to which the group is linked. The Z score for a bond length (or angle) is the number of standard deviations the observed value is removed from the expected value. A bond length (or angle) with $|Z| > 2$ is considered an outlier worth inspection. RMSZ is the root-mean-square of all Z scores of the bond lengths (or angles).

Mol	Type	Chain	Res	Link	Bond lengths			Bond angles		
					Counts	RMSZ	# Z > 2	Counts	RMSZ	# Z > 2
2	EGR	A	501	-	14,14,14	0.99	1 (7%)	19,19,19	1.58	3 (15%)
3	PG4	A	502	-	12,12,12	0.68	0	11,11,11	1.42	0
4	PEG	A	503	-	6,6,6	0.65	0	5,5,5	1.28	0
5	PGE	A	504	-	9,9,9	0.65	0	8,8,8	1.47	1 (12%)
4	PEG	A	505	-	6,6,6	0.65	0	5,5,5	1.38	0
4	PEG	A	506	-	6,6,6	0.67	0	5,5,5	1.40	0
4	PEG	A	507	-	6,6,6	0.59	0	5,5,5	1.40	0
2	EGR	B	501	-	14,14,14	1.01	1 (7%)	19,19,19	1.44	4 (21%)
5	PGE	B	502	-	9,9,9	0.57	0	8,8,8	1.64	1 (12%)
4	PEG	B	503	-	6,6,6	0.58	0	5,5,5	1.41	0
4	PEG	B	504	-	6,6,6	0.63	0	5,5,5	1.41	0
4	PEG	B	505	-	6,6,6	0.62	0	5,5,5	1.44	0
4	PEG	B	506	-	6,6,6	0.65	0	5,5,5	1.23	0

In the following table, the Chirals column lists the number of chiral outliers, the number of chiral centers analysed, the number of these observed in the model and the number defined in the chemical component dictionary. Similar counts are reported in the Torsion and Rings columns. '-' means no outliers of that kind were identified.

Mol	Type	Chain	Res	Link	Chirals	Torsions	Rings
2	EGR	A	501	-	-	0/7/7/7	0/1/1/1
3	PG4	A	502	-	-	0/10/10/10	0/0/0/0
4	PEG	A	503	-	-	0/4/4/4	0/0/0/0
5	PGE	A	504	-	-	0/7/7/7	0/0/0/0
4	PEG	A	505	-	-	0/4/4/4	0/0/0/0
4	PEG	A	506	-	-	0/4/4/4	0/0/0/0
4	PEG	A	507	-	-	0/4/4/4	0/0/0/0
2	EGR	B	501	-	-	0/7/7/7	0/1/1/1
5	PGE	B	502	-	-	0/7/7/7	0/0/0/0
4	PEG	B	503	-	-	0/4/4/4	0/0/0/0
4	PEG	B	504	-	-	0/4/4/4	0/0/0/0
4	PEG	B	505	-	-	0/4/4/4	0/0/0/0
4	PEG	B	506	-	-	0/4/4/4	0/0/0/0

All (2) bond length outliers are listed below:

Mol	Chain	Res	Type	Atoms	Z	Observed(Å)	Ideal(Å)
2	B	501	EGR	O03-C04	2.55	1.39	1.33
2	A	501	EGR	O03-C04	2.64	1.40	1.33

All (9) bond angle outliers are listed below:

Mol	Chain	Res	Type	Atoms	Z	Observed(°)	Ideal(°)
2	B	501	EGR	C06-C07-C08	-2.77	117.81	120.09
2	B	501	EGR	C14-C12-C10	-2.15	118.99	120.45
5	B	502	PGE	C5-O3-C4	2.00	121.98	113.30
2	B	501	EGR	C14-C06-C07	2.16	122.27	119.63
5	A	504	PGE	O3-C5-C6	2.17	120.16	110.15
2	B	501	EGR	O03-C02-C01	2.53	117.85	108.40
2	A	501	EGR	O03-C02-C01	3.07	119.85	108.40
2	A	501	EGR	O03-C04-C06	3.17	118.03	112.19
2	A	501	EGR	C02-O03-C04	3.52	124.20	116.45

There are no chirality outliers.

There are no torsion outliers.

There are no ring outliers.

9 monomers are involved in 22 short contacts:

Mol	Chain	Res	Type	Clashes	Symm-Clashes
2	A	501	EGR	4	0
3	A	502	PG4	2	0
5	A	504	PGE	7	0
4	A	506	PEG	1	0
4	A	507	PEG	2	0
2	B	501	EGR	2	0
5	B	502	PGE	2	0
4	B	503	PEG	1	0
4	B	506	PEG	1	0

5.7 Other polymers [i](#)

There are no such residues in this entry.

5.8 Polymer linkage issues [i](#)

There are no chain breaks in this entry.

6 Fit of model and data

6.1 Protein, DNA and RNA chains

In the following table, the column labelled ‘#RSRZ > 2’ contains the number (and percentage) of RSRZ outliers, followed by percent RSRZ outliers for the chain as percentile scores relative to all X-ray entries and entries of similar resolution. The OWAB column contains the minimum, median, 95th percentile and maximum values of the occupancy-weighted average B-factor per residue. The column labelled ‘Q < 0.9’ lists the number of (and percentage) of residues with an average occupancy less than 0.9.

Mol	Chain	Analysed	<RSRZ>	#RSRZ>2	OWAB(Å ²)	Q<0.9
1	A	470/470 (100%)	0.03	28 (5%) 23 25	10, 17, 46, 144	0
1	B	470/470 (100%)	-0.30	15 (3%) 48 54	6, 13, 33, 114	0
All	All	940/940 (100%)	-0.14	43 (4%) 33 38	6, 15, 40, 144	0

All (43) RSRZ outliers are listed below:

Mol	Chain	Res	Type	RSRZ
1	A	236	THR	18.2
1	A	237	LYS	11.1
1	A	233	ALA	9.7
1	A	234	GLY	8.9
1	A	403	THR	8.3
1	A	243	PHE	8.0
1	A	231	PRO	7.3
1	A	402	THR	6.9
1	A	232	VAL	6.8
1	A	401	THR	6.7
1	A	235	THR	6.7
1	A	240	ARG	6.1
1	A	405	SER	5.7
1	A	245	PRO	5.5
1	A	121	LYS	5.1
1	B	237	LYS	5.0
1	A	238	ASN	5.0
1	B	121	LYS	4.8
1	A	230	GLN	4.7
1	B	122	SER	4.7
1	B	233	ALA	4.6
1	A	229	TYR	4.5
1	A	241	PRO	4.5
1	B	238	ASN	4.3

Continued on next page...

Continued from previous page...

Mol	Chain	Res	Type	RSRZ
1	A	244	GLU	4.1
1	B	123	GLY	3.7
1	B	403	THR	3.7
1	A	246	VAL	3.7
1	A	278	ASP	3.4
1	A	404	SER	3.3
1	A	277	SER	3.3
1	A	247	SER	3.3
1	B	232	VAL	3.2
1	B	120	ASP	3.1
1	A	91	TRP	3.0
1	B	236	THR	2.7
1	B	240	ARG	2.7
1	B	243	PHE	2.6
1	B	124	GLN	2.5
1	A	242	LYS	2.4
1	A	122	SER	2.4
1	B	235	THR	2.4
1	B	239	GLY	2.1

6.2 Non-standard residues in protein, DNA, RNA chains [i](#)

There are no non-standard protein/DNA/RNA residues in this entry.

6.3 Carbohydrates [i](#)

There are no carbohydrates in this entry.

6.4 Ligands [i](#)

In the following table, the Atoms column lists the number of modelled atoms in the group and the number defined in the chemical component dictionary. LLDF column lists the quality of electron density of the group with respect to its neighbouring residues in protein, DNA or RNA chains. The B-factors column lists the minimum, median, 95th percentile and maximum values of B factors of atoms in the group. The column labelled 'Q< 0.9' lists the number of atoms with occupancy less than 0.9.

Mol	Type	Chain	Res	Atoms	RSCC	RSR	LLDF	B-factors(Å ²)	Q<0.9
2	EGR	B	501	14/14	0.82	0.19	11.17	16,28,32,33	0
4	PEG	A	507	7/7	0.83	0.19	8.96	38,39,41,47	0

Continued on next page...

Continued from previous page...

Mol	Type	Chain	Res	Atoms	RSCC	RSR	LLDF	B-factors(\AA^2)	Q<0.9
2	EGR	A	501	14/14	0.79	0.15	7.44	24,30,36,37	0
5	PGE	B	502	10/10	0.81	0.13	6.15	18,29,34,34	0
5	PGE	A	504	10/10	0.92	0.11	3.42	13,27,37,37	0
4	PEG	B	505	7/7	0.92	0.10	1.97	44,45,47,47	0
4	PEG	B	503	7/7	0.87	0.13	1.69	27,30,36,40	0
4	PEG	B	504	7/7	0.87	0.10	1.57	40,41,46,46	0
4	PEG	A	505	7/7	0.87	0.11	1.26	34,40,44,47	0
3	PG4	A	502	13/13	0.82	0.14	0.80	29,36,42,44	0
4	PEG	A	503	7/7	0.92	0.09	0.16	38,40,43,46	0
4	PEG	B	506	7/7	0.84	0.11	-	26,30,34,42	0
4	PEG	A	506	7/7	0.82	0.14	-	29,32,39,44	0

6.5 Other polymers [i](#)

There are no such residues in this entry.