



# Full wwPDB X-ray Structure Validation Report ⓘ

Jul 31, 2017 – 09:21 PM EDT

PDB ID : 5JV4  
Title : Structure of F420 binding protein, MSMEG\_6526, from Mycobacterium smegmatis with F420 bound  
Authors : Lee, B.M.; Carr, P.D.; Jackson, C.J.  
Deposited on : unknown  
Resolution : 1.70 Å(reported)

This is a Full wwPDB X-ray Structure Validation Report for a publicly released PDB entry.

We welcome your comments at [validation@mail.wwpdb.org](mailto:validation@mail.wwpdb.org)

A user guide is available at

<http://wwpdb.org/validation/2016/XrayValidationReportHelp>

with specific help available everywhere you see the ⓘ symbol.

---

The following versions of software and data (see [references ⓘ](#)) were used in the production of this report:

MolProbity : 4.02b-467  
Mogul : 1.7.2 (RC1), CSD as538be (2017)  
Xtriage (Phenix) : 1.9-1692  
EDS : rb-20029824  
Percentile statistics : 20161228.v01 (using entries in the PDB archive December 28th 2016)  
Refmac : 5.8.0135  
CCP4 : 6.5.0  
Ideal geometry (proteins) : Engh & Huber (2001)  
Ideal geometry (DNA, RNA) : Parkinson et al. (1996)  
Validation Pipeline (wwPDB-VP) : rb-20029824

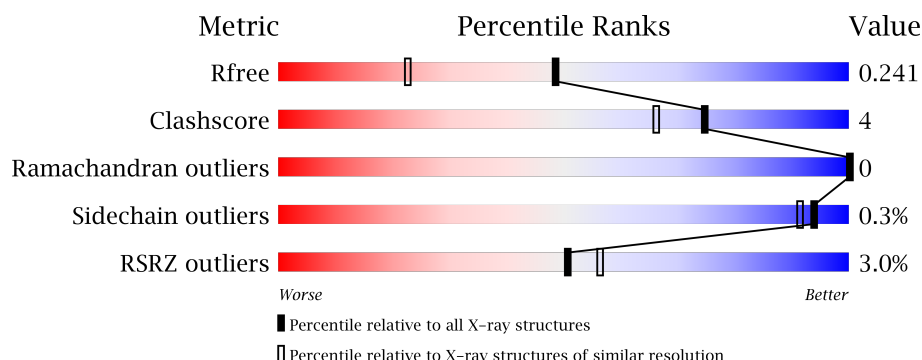
# 1 Overall quality at a glance

The following experimental techniques were used to determine the structure:

## *X-RAY DIFFRACTION*

The reported resolution of this entry is 1.70 Å.

Percentile scores (ranging between 0-100) for global validation metrics of the entry are shown in the following graphic. The table shows the number of entries on which the scores are based.




Metric	Whole archive (#Entries)	Similar resolution (#Entries, resolution range(Å))
$R_{free}$	100719	3453 (1.70-1.70)
Clashscore	112137	3876 (1.70-1.70)
Ramachandran outliers	110173	3815 (1.70-1.70)
Sidechain outliers	110143	3815 (1.70-1.70)
RSRZ outliers	101464	3491 (1.70-1.70)

The table below summarises the geometric issues observed across the polymeric chains and their fit to the electron density. The red, orange, yellow and green segments on the lower bar indicate the fraction of residues that contain outliers for  $\geq 3$ , 2, 1 and 0 types of geometric quality criteria. A grey segment represents the fraction of residues that are not modelled. The numeric value for each fraction is indicated below the corresponding segment, with a dot representing fractions  $\leq 5\%$ . The upper red bar (where present) indicates the fraction of residues that have poor fit to the electron density. The numeric value is given above the bar.

Mol	Chain	Length	Quality of chain
1	A	154	<div> <div>5%</div> <div> <div></div> <div>84%</div> <div>8%</div> <div>8%</div> </div> </div>
1	B	154	<div> <div>2%</div> <div> <div></div> <div>86%</div> <div>•</div> <div>10%</div> </div> </div>
1	C	154	<div> <div>3%</div> <div> <div></div> <div>82%</div> <div>8%</div> <div>10%</div> </div> </div>
1	D	154	<div> <div>•%</div> <div> <div></div> <div>83%</div> <div>6%</div> <div>10%</div> </div> </div>
1	E	154	<div> <div>4%</div> <div> <div></div> <div>85%</div> <div>5%</div> <div>10%</div> </div> </div>

*Continued on next page...*

*Continued from previous page...*

Mol	Chain	Length	Quality of chain
1	F	154	

The following table lists non-polymeric compounds, carbohydrate monomers and non-standard residues in protein, DNA, RNA chains that are outliers for geometric or electron-density-fit criteria:

Mol	Type	Chain	Res	Chirality	Geometry	Clashes	Electron density
3	MPD	B	203	-	-	-	X
3	MPD	B	204	-	-	-	X
3	MPD	E	201	-	-	-	X
3	MPD	F	203	-	-	-	X
5	NA	D	201	-	-	-	X

## 2 Entry composition

There are 6 unique types of molecules in this entry. The entry contains 7362 atoms, of which 0 are hydrogens and 0 are deuteriums.

In the tables below, the ZeroOcc column contains the number of atoms modelled with zero occupancy, the AltConf column contains the number of residues with at least one atom in alternate conformation and the Trace column contains the number of residues modelled with at most 2 atoms.

- Molecule 1 is a protein called Pyridoxamine 5'-phosphate oxidase-like FMN-binding protein.

Mol	Chain	Residues	Atoms					ZeroOcc	AltConf	Trace
1	A	142	Total	C	N	O	S	109	0	0
			1113	702	203	207	1			
1	B	139	Total	C	N	O		0	0	0
			1095	692	201	202				
1	C	138	Total	C	N	O		81	0	0
			1084	683	200	201				
1	D	138	Total	C	N	O		0	0	0
			1084	683	200	201				
1	E	138	Total	C	N	O		113	0	0
			1084	683	200	201				
1	F	138	Total	C	N	O		92	0	0
			1084	683	200	201				

There are 72 discrepancies between the modelled and reference sequences:

Chain	Residue	Modelled	Actual	Comment	Reference
A	-11	HIS	-	expression tag	UNP A0A0D6J2M1
A	-10	HIS	-	expression tag	UNP A0A0D6J2M1
A	-9	HIS	-	expression tag	UNP A0A0D6J2M1
A	-8	HIS	-	expression tag	UNP A0A0D6J2M1
A	-7	HIS	-	expression tag	UNP A0A0D6J2M1
A	-6	HIS	-	expression tag	UNP A0A0D6J2M1
A	-5	GLU	-	expression tag	UNP A0A0D6J2M1
A	-4	ASN	-	expression tag	UNP A0A0D6J2M1
A	-3	LEU	-	expression tag	UNP A0A0D6J2M1
A	-2	TYR	-	expression tag	UNP A0A0D6J2M1
A	-1	PHE	-	expression tag	UNP A0A0D6J2M1
A	0	GLY	-	expression tag	UNP A0A0D6J2M1
B	-11	HIS	-	expression tag	UNP A0A0D6J2M1
B	-10	HIS	-	expression tag	UNP A0A0D6J2M1
B	-9	HIS	-	expression tag	UNP A0A0D6J2M1
B	-8	HIS	-	expression tag	UNP A0A0D6J2M1
B	-7	HIS	-	expression tag	UNP A0A0D6J2M1

*Continued on next page...*

*Continued from previous page...*

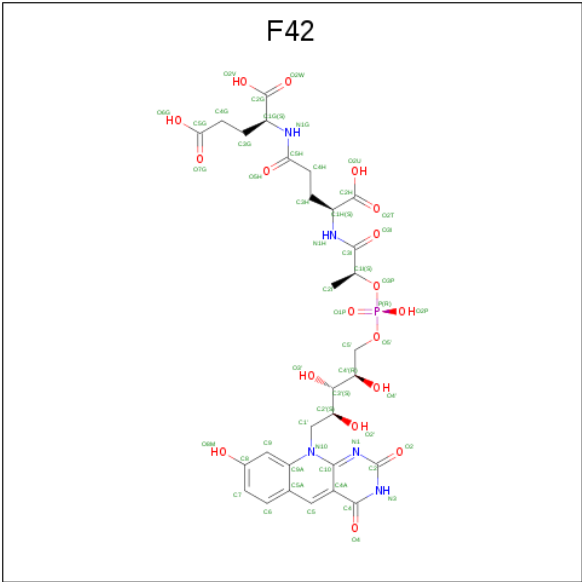
Chain	Residue	Modelled	Actual	Comment	Reference
B	-6	HIS	-	expression tag	UNP A0A0D6J2M1
B	-5	GLU	-	expression tag	UNP A0A0D6J2M1
B	-4	ASN	-	expression tag	UNP A0A0D6J2M1
B	-3	LEU	-	expression tag	UNP A0A0D6J2M1
B	-2	TYR	-	expression tag	UNP A0A0D6J2M1
B	-1	PHE	-	expression tag	UNP A0A0D6J2M1
B	0	GLY	-	expression tag	UNP A0A0D6J2M1
C	-11	HIS	-	expression tag	UNP A0A0D6J2M1
C	-10	HIS	-	expression tag	UNP A0A0D6J2M1
C	-9	HIS	-	expression tag	UNP A0A0D6J2M1
C	-8	HIS	-	expression tag	UNP A0A0D6J2M1
C	-7	HIS	-	expression tag	UNP A0A0D6J2M1
C	-6	HIS	-	expression tag	UNP A0A0D6J2M1
C	-5	GLU	-	expression tag	UNP A0A0D6J2M1
C	-4	ASN	-	expression tag	UNP A0A0D6J2M1
C	-3	LEU	-	expression tag	UNP A0A0D6J2M1
C	-2	TYR	-	expression tag	UNP A0A0D6J2M1
C	-1	PHE	-	expression tag	UNP A0A0D6J2M1
C	0	GLY	-	expression tag	UNP A0A0D6J2M1
D	-11	HIS	-	expression tag	UNP A0A0D6J2M1
D	-10	HIS	-	expression tag	UNP A0A0D6J2M1
D	-9	HIS	-	expression tag	UNP A0A0D6J2M1
D	-8	HIS	-	expression tag	UNP A0A0D6J2M1
D	-7	HIS	-	expression tag	UNP A0A0D6J2M1
D	-6	HIS	-	expression tag	UNP A0A0D6J2M1
D	-5	GLU	-	expression tag	UNP A0A0D6J2M1
D	-4	ASN	-	expression tag	UNP A0A0D6J2M1
D	-3	LEU	-	expression tag	UNP A0A0D6J2M1
D	-2	TYR	-	expression tag	UNP A0A0D6J2M1
D	-1	PHE	-	expression tag	UNP A0A0D6J2M1
D	0	GLY	-	expression tag	UNP A0A0D6J2M1
E	-11	HIS	-	expression tag	UNP A0A0D6J2M1
E	-10	HIS	-	expression tag	UNP A0A0D6J2M1
E	-9	HIS	-	expression tag	UNP A0A0D6J2M1
E	-8	HIS	-	expression tag	UNP A0A0D6J2M1
E	-7	HIS	-	expression tag	UNP A0A0D6J2M1
E	-6	HIS	-	expression tag	UNP A0A0D6J2M1
E	-5	GLU	-	expression tag	UNP A0A0D6J2M1
E	-4	ASN	-	expression tag	UNP A0A0D6J2M1
E	-3	LEU	-	expression tag	UNP A0A0D6J2M1
E	-2	TYR	-	expression tag	UNP A0A0D6J2M1
E	-1	PHE	-	expression tag	UNP A0A0D6J2M1

*Continued on next page...*

Continued from previous page...

Chain	Residue	Modelled	Actual	Comment	Reference
E	0	GLY	-	expression tag	UNP A0A0D6J2M1
F	-11	HIS	-	expression tag	UNP A0A0D6J2M1
F	-10	HIS	-	expression tag	UNP A0A0D6J2M1
F	-9	HIS	-	expression tag	UNP A0A0D6J2M1
F	-8	HIS	-	expression tag	UNP A0A0D6J2M1
F	-7	HIS	-	expression tag	UNP A0A0D6J2M1
F	-6	HIS	-	expression tag	UNP A0A0D6J2M1
F	-5	GLU	-	expression tag	UNP A0A0D6J2M1
F	-4	ASN	-	expression tag	UNP A0A0D6J2M1
F	-3	LEU	-	expression tag	UNP A0A0D6J2M1
F	-2	TYR	-	expression tag	UNP A0A0D6J2M1
F	-1	PHE	-	expression tag	UNP A0A0D6J2M1
F	0	GLY	-	expression tag	UNP A0A0D6J2M1

- Molecule 2 is COENZYME F420 (three-letter code: F42) (formula: C<sub>29</sub>H<sub>36</sub>N<sub>5</sub>O<sub>18</sub>P).



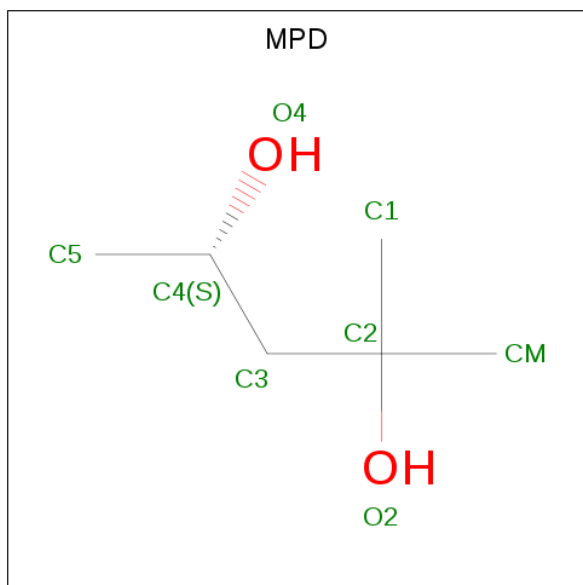
Mol	Chain	Residues	Atoms					ZeroOcc	AltConf
2	A	1	Total	C	N	O	P	0	0
			30	16	3	10	1		
2	B	1	Total	C	N	O	P	0	0
			30	16	3	10	1		
2	B	1	Total	C	N	O	P	0	0
			30	16	3	10	1		
2	C	1	Total	C	N	O	P	0	0
			30	16	3	10	1		
2	D	1	Total	C	N	O	P	0	0
			53	29	5	18	1		

Continued on next page...

Continued from previous page...

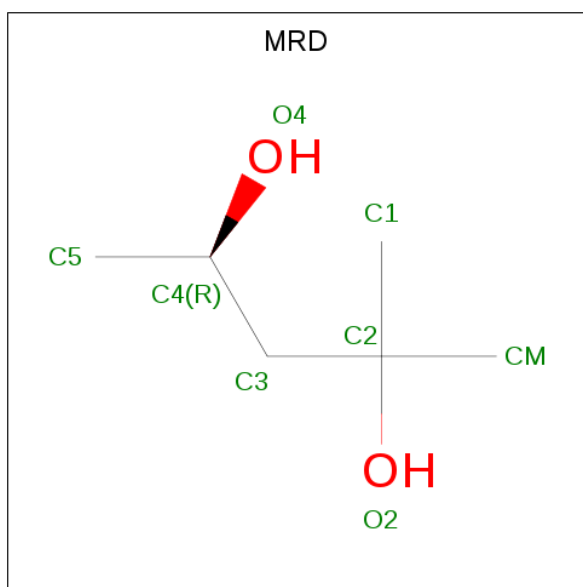
Mol	Chain	Residues	Atoms					ZeroOcc	AltConf
2	F	1	Total	C	N	O	P	0	0
			30	16	3	10	1		

- Molecule 3 is (4S)-2-METHYL-2,4-PENTANEDIOL (three-letter code: MPD) (formula:  $C_6H_{14}O_2$ ).



Mol	Chain	Residues	Atoms			ZeroOcc	AltConf
3	A	1	Total	C	O	0	0
			8	6	2		
3	B	1	Total	C	O	0	0
			8	6	2		
3	B	1	Total	C	O	0	0
			8	6	2		
3	C	1	Total	C	O	0	0
			8	6	2		
3	E	1	Total	C	O	0	0
			8	6	2		
3	F	1	Total	C	O	0	0
			8	6	2		
3	F	1	Total	C	O	0	0
			8	6	2		

- Molecule 4 is (4R)-2-METHYLPENTANE-2,4-DIOL (three-letter code: MRD) (formula:  $C_6H_{14}O_2$ ).



Mol	Chain	Residues	Atoms			ZeroOcc	AltConf
4	B	1	Total	C	O	0	0
			8	6	2		
4	C	1	Total	C	O	0	0
			8	6	2		

- Molecule 5 is SODIUM ION (three-letter code: NA) (formula: Na).

Mol	Chain	Residues	Atoms		ZeroOcc	AltConf
5	D	1	Total	Na	0	0
			1	1		

- Molecule 6 is water.

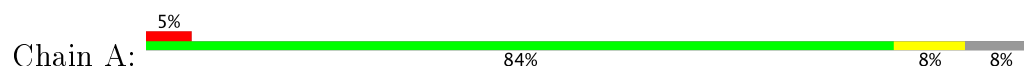
Mol	Chain	Residues	Atoms		ZeroOcc	AltConf
6	A	103	Total	O	0	0
			103	103		
6	B	111	Total	O	0	0
			111	111		
6	C	72	Total	O	0	0
			72	72		
6	D	105	Total	O	0	0
			105	105		
6	E	77	Total	O	0	0
			77	77		
6	F	74	Total	O	0	0
			74	74		



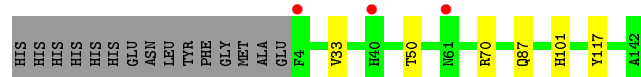
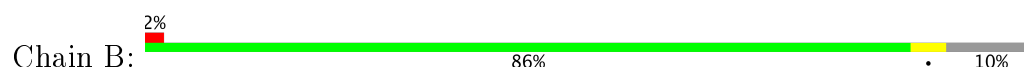
### 3 Residue-property plots [i](#)

These plots are drawn for all protein, RNA and DNA chains in the entry. The first graphic for a chain summarises the proportions of the various outlier classes displayed in the second graphic. The second graphic shows the sequence view annotated by issues in geometry and electron density. Residues are color-coded according to the number of geometric quality criteria for which they contain at least one outlier: green = 0, yellow = 1, orange = 2 and red = 3 or more. A red dot above a residue indicates a poor fit to the electron density ( $RSRZ > 2$ ). Stretches of 2 or more consecutive residues without any outlier are shown as a green connector. Residues present in the sample, but not in the model, are shown in grey.

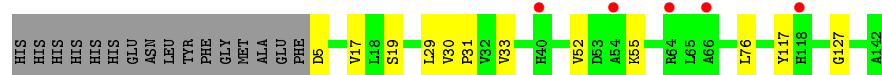
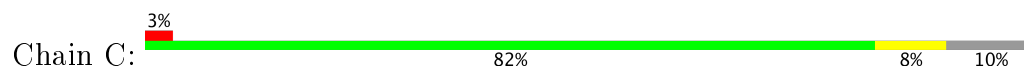
- Molecule 1: Pyridoxamine 5'-phosphate oxidase-like FMN-binding protein



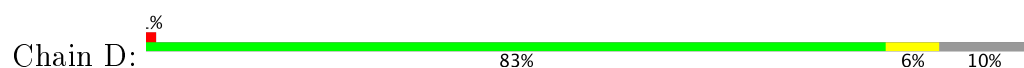
- Molecule 1: Pyridoxamine 5'-phosphate oxidase-like FMN-binding protein



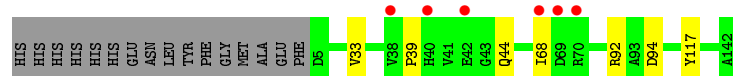
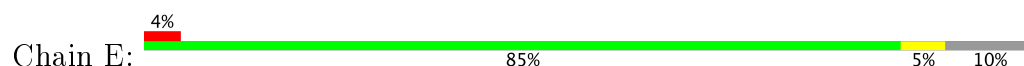
- Molecule 1: Pyridoxamine 5'-phosphate oxidase-like FMN-binding protein



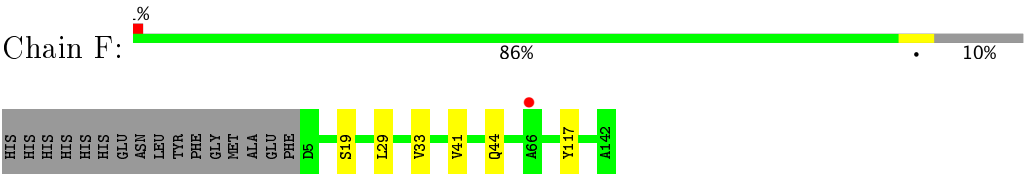
- Molecule 1: Pyridoxamine 5'-phosphate oxidase-like FMN-binding protein



- Molecule 1: Pyridoxamine 5'-phosphate oxidase-like FMN-binding protein



- Molecule 1: Pyridoxamine 5'-phosphate oxidase-like FMN-binding protein



## 4 Data and refinement statistics

Property	Value	Source
Space group	C 1 2 1	Depositor
Cell constants a, b, c, $\alpha$ , $\beta$ , $\gamma$	139.95Å 84.24Å 75.98Å 90.00° 90.85° 90.00°	Depositor
Resolution (Å)	75.97 – 1.70 40.81 – 1.70	Depositor EDS
% Data completeness (in resolution range)	99.9 (75.97-1.70) 99.9 (40.81-1.70)	Depositor EDS
$R_{merge}$	0.12	Depositor
$R_{sym}$	(Not available)	Depositor
$\langle I/\sigma(I) \rangle$ <sup>1</sup>	1.93 (at 1.70Å)	Xtriage
Refinement program	REFMAC 5.8.0049	Depositor
R, $R_{free}$	0.189 , 0.231 0.198 , 0.241	Depositor DCC
$R_{free}$ test set	4905 reflections (5.34%)	DCC
Wilson B-factor (Å <sup>2</sup> )	17.3	Xtriage
Anisotropy	0.017	Xtriage
Bulk solvent $k_{sol}$ (e/Å <sup>3</sup> ), $B_{sol}$ (Å <sup>2</sup> )	0.35 , 50.7	EDS
L-test for twinning <sup>2</sup>	$\langle  L  \rangle = 0.47$ , $\langle L^2 \rangle = 0.30$	Xtriage
Estimated twinning fraction	0.025 for -1/2*h+3/2*k,1/2*h+1/2*k,-l 0.024 for -1/2*h-3/2*k,-1/2*h+1/2*k,-l 0.064 for 1/2*h+3/2*k,1/2*h-1/2*k,-l 0.055 for 1/2*h-3/2*k,-1/2*h-1/2*k,-l 0.034 for -h,-k,l	Xtriage
$F_o, F_c$ correlation	0.95	EDS
Total number of atoms	7362	wwPDB-VP
Average B, all atoms (Å <sup>2</sup> )	26.0	wwPDB-VP

Xtriage's analysis on translational NCS is as follows: *The largest off-origin peak in the Patterson function is 4.45% of the height of the origin peak. No significant pseudotranslation is detected.*

<sup>1</sup>Intensities estimated from amplitudes.

<sup>2</sup>Theoretical values of  $\langle |L| \rangle$ ,  $\langle L^2 \rangle$  for acentric reflections are 0.5, 0.333 respectively for untwinned datasets, and 0.375, 0.2 for perfectly twinned datasets.

## 5 Model quality

### 5.1 Standard geometry

Bond lengths and bond angles in the following residue types are not validated in this section: MRD, NA, MPD, F42

The Z score for a bond length (or angle) is the number of standard deviations the observed value is removed from the expected value. A bond length (or angle) with  $|Z| > 5$  is considered an outlier worth inspection. RMSZ is the root-mean-square of all Z scores of the bond lengths (or angles).

Mol	Chain	Bond lengths		Bond angles	
		RMSZ	# Z  >5	RMSZ	# Z  >5
1	A	0.86	0/1143	0.89	0/1566
1	B	0.95	0/1125	0.89	0/1541
1	C	0.86	0/1113	0.89	0/1525
1	D	0.89	0/1113	0.90	0/1525
1	E	0.85	0/1113	0.86	0/1525
1	F	0.88	0/1113	0.82	0/1525
All	All	0.88	0/6720	0.87	0/9207

There are no bond length outliers.

There are no bond angle outliers.

There are no chirality outliers.

There are no planarity outliers.

### 5.2 Too-close contacts

In the following table, the Non-H and H(model) columns list the number of non-hydrogen atoms and hydrogen atoms in the chain respectively. The H(added) column lists the number of hydrogen atoms added and optimized by MolProbity. The Clashes column lists the number of clashes within the asymmetric unit, whereas Symm-Clashes lists symmetry related clashes.

Mol	Chain	Non-H	H(model)	H(added)	Clashes	Symm-Clashes
1	A	1113	0	1070	8	1
1	B	1095	0	1058	4	4
1	C	1084	0	1049	11	1
1	D	1084	0	1049	8	0
1	E	1084	0	1049	5	0
1	F	1084	0	1049	13	0
2	A	30	0	16	0	0

*Continued on next page...*

*Continued from previous page...*

Mol	Chain	Non-H	H(model)	H(added)	Clashes	Symm-Clashes
2	B	60	0	30	0	0
2	C	30	0	15	0	0
2	D	53	0	32	0	0
2	F	30	0	15	0	0
3	A	8	0	14	0	0
3	B	16	0	28	0	0
3	C	8	0	14	2	0
3	E	8	0	14	0	0
3	F	16	0	28	0	0
4	B	8	0	14	0	0
4	C	8	0	14	0	0
5	D	1	0	0	0	0
6	A	103	0	0	1	0
6	B	111	0	0	2	0
6	C	72	0	0	0	0
6	D	105	0	0	3	0
6	E	77	0	0	0	0
6	F	74	0	0	0	0
All	All	7362	0	6558	46	5

The all-atom clashscore is defined as the number of clashes found per 1000 atoms (including hydrogen atoms). The all-atom clashscore for this structure is 4.

All (46) close contacts within the same asymmetric unit are listed below, sorted by their clash magnitude.

Atom-1	Atom-2	Interatomic distance (Å)	Clash overlap (Å)
3:C:202:MPD:H52	3:C:202:MPD:O2	1.73	0.88
1:F:41:VAL:HG23	1:F:44:GLN:CG	2.17	0.74
1:C:30:VAL:HG22	1:C:31:PRO:HD2	1.71	0.72
1:F:41:VAL:HG23	1:F:44:GLN:HG2	1.71	0.71
1:A:54:ALA:O	1:A:126:ASP:OD2	2.08	0.70
1:F:41:VAL:CG2	1:F:44:GLN:CG	2.70	0.69
1:C:30:VAL:CG2	1:C:31:PRO:HD2	2.23	0.68
1:B:70:ARG:HD3	6:B:327:HOH:O	1.96	0.66
3:C:202:MPD:O2	3:C:202:MPD:C5	2.45	0.64
1:F:41:VAL:HG23	1:F:44:GLN:HB2	1.80	0.64
1:F:41:VAL:CG2	1:F:44:GLN:HG2	2.29	0.61
1:C:29:LEU:HD21	1:F:19:SER:HB2	1.83	0.60
1:D:63:ARG:NH1	6:D:302:HOH:O	2.38	0.57
1:F:41:VAL:HG23	1:F:44:GLN:CB	2.36	0.55
1:F:41:VAL:HG21	1:F:44:GLN:HG3	1.89	0.54

*Continued on next page...*

Continued from previous page...

Atom-1	Atom-2	Interatomic distance (Å)	Clash overlap (Å)
1:E:92:ARG:HD3	1:E:94:ASP:OD1	2.09	0.53
1:F:33:VAL:HB	1:F:117:TYR:CZ	2.45	0.52
1:E:33:VAL:HB	1:E:117:TYR:CZ	2.46	0.51
1:C:30:VAL:HG22	1:C:31:PRO:CD	2.40	0.50
1:A:52:VAL:O	1:A:127:GLY:HA3	2.12	0.50
1:D:114:ARG:HD2	6:D:384:HOH:O	2.11	0.49
1:E:39:PRO:CB	1:E:44:GLN:HB2	2.42	0.49
1:C:33:VAL:HB	1:C:117:TYR:CZ	2.47	0.49
1:B:33:VAL:O	1:B:50:THR:HG23	2.12	0.48
1:C:52:VAL:O	1:C:127:GLY:HA3	2.12	0.48
1:F:41:VAL:HG21	1:F:44:GLN:CG	2.40	0.48
1:B:101:HIS:HE1	6:B:387:HOH:O	1.96	0.48
1:F:41:VAL:CG2	1:F:44:GLN:HG3	2.44	0.48
1:A:6:ALA:HB2	6:A:317:HOH:O	2.14	0.47
1:A:33:VAL:HB	1:A:117:TYR:CZ	2.50	0.47
1:B:33:VAL:HB	1:B:117:TYR:CZ	2.50	0.46
1:E:92:ARG:CD	1:E:94:ASP:OD1	2.64	0.46
1:A:68:ILE:HA	1:A:71:ASP:O	2.15	0.46
1:C:17:VAL:O	1:C:76:LEU:HA	2.16	0.46
1:C:19:SER:HB2	1:F:29:LEU:HD21	1.96	0.46
1:C:30:VAL:CG2	1:C:31:PRO:CD	2.95	0.45
1:A:126:ASP:OD1	1:A:126:ASP:N	2.50	0.44
1:A:29:LEU:HD21	1:D:19:SER:HB2	1.99	0.44
1:A:19:SER:HB2	1:D:29:LEU:HD21	2.00	0.44
1:C:30:VAL:HG23	1:C:31:PRO:HD2	2.00	0.43
1:D:92:ARG:HH12	1:D:136:ARG:NH2	2.16	0.43
1:D:136:ARG:NH1	6:D:301:HOH:O	2.51	0.43
1:D:33:VAL:HB	1:D:117:TYR:CZ	2.53	0.43
1:D:114:ARG:NH1	1:D:120:TYR:O	2.51	0.42
1:E:68:ILE:HG22	1:E:68:ILE:O	2.20	0.41
1:C:29:LEU:HD21	1:F:29:LEU:HD21	2.03	0.41

All (5) symmetry-related close contacts are listed below. The label for Atom-2 includes the symmetry operator and encoded unit-cell translations to be applied.

Atom-1	Atom-2	Interatomic distance (Å)	Clash overlap (Å)
1:B:87:GLN:OE1	1:B:87:GLN:OE1[2_555]	1.05	1.15
1:B:87:GLN:CD	1:B:87:GLN:OE1[2_555]	1.17	1.03
1:B:87:GLN:OE1	1:B:87:GLN:NE2[2_555]	1.61	0.59
1:B:87:GLN:CD	1:B:87:GLN:CD[2_555]	1.99	0.21
1:A:63:ARG:NH2	1:C:5:ASP:OD1[3_445]	2.00	0.20

## 5.3 Torsion angles

### 5.3.1 Protein backbone

In the following table, the Percentiles column shows the percent Ramachandran outliers of the chain as a percentile score with respect to all X-ray entries followed by that with respect to entries of similar resolution.

The Analysed column shows the number of residues for which the backbone conformation was analysed, and the total number of residues.

Mol	Chain	Analysed	Favoured	Allowed	Outliers	Percentiles	
1	A	140/154 (91%)	136 (97%)	4 (3%)	0	100	100
1	B	137/154 (89%)	136 (99%)	1 (1%)	0	100	100
1	C	136/154 (88%)	134 (98%)	2 (2%)	0	100	100
1	D	136/154 (88%)	134 (98%)	2 (2%)	0	100	100
1	E	136/154 (88%)	131 (96%)	5 (4%)	0	100	100
1	F	136/154 (88%)	134 (98%)	2 (2%)	0	100	100
All	All	821/924 (89%)	805 (98%)	16 (2%)	0	100	100

There are no Ramachandran outliers to report.

### 5.3.2 Protein sidechains

In the following table, the Percentiles column shows the percent sidechain outliers of the chain as a percentile score with respect to all X-ray entries followed by that with respect to entries of similar resolution.

The Analysed column shows the number of residues for which the sidechain conformation was analysed, and the total number of residues.

Mol	Chain	Analysed	Rotameric	Outliers	Percentiles	
1	A	114/126 (90%)	114 (100%)	0	100	100
1	B	113/126 (90%)	113 (100%)	0	100	100
1	C	112/126 (89%)	111 (99%)	1 (1%)	82	74
1	D	112/126 (89%)	111 (99%)	1 (1%)	82	74
1	E	112/126 (89%)	112 (100%)	0	100	100
1	F	112/126 (89%)	112 (100%)	0	100	100
All	All	675/756 (89%)	673 (100%)	2 (0%)	94	91

All (2) residues with a non-rotameric sidechain are listed below:

Mol	Chain	Res	Type
1	C	55	LYS
1	D	64	ARG

Some sidechains can be flipped to improve hydrogen bonding and reduce clashes. All (2) such sidechains are listed below:

Mol	Chain	Res	Type
1	B	101	HIS
1	E	118	HIS

### 5.3.3 RNA [i](#)

There are no RNA molecules in this entry.

## 5.4 Non-standard residues in protein, DNA, RNA chains [i](#)

There are no non-standard protein/DNA/RNA residues in this entry.

## 5.5 Carbohydrates [i](#)

There are no carbohydrates in this entry.

## 5.6 Ligand geometry [i](#)

Of 16 ligands modelled in this entry, 1 is monoatomic - leaving 15 for Mogul analysis.

In the following table, the Counts columns list the number of bonds (or angles) for which Mogul statistics could be retrieved, the number of bonds (or angles) that are observed in the model and the number of bonds (or angles) that are defined in the chemical component dictionary. The Link column lists molecule types, if any, to which the group is linked. The Z score for a bond length (or angle) is the number of standard deviations the observed value is removed from the expected value. A bond length (or angle) with  $|Z| > 2$  is considered an outlier worth inspection. RMSZ is the root-mean-square of all Z scores of the bond lengths (or angles).

Mol	Type	Chain	Res	Link	Bond lengths			Bond angles		
					Counts	RMSZ	$\# Z  > 2$	Counts	RMSZ	$\# Z  > 2$
2	F42	A	201	-	29,32,55	4.24	15 (51%)	35,48,79	3.88	16 (45%)
3	MPD	A	202	-	7,7,7	0.28	0	9,10,10	0.61	0
2	F42	B	201	-	29,32,55	4.42	14 (48%)	35,48,79	3.94	20 (57%)



Mol	Type	Chain	Res	Link	Bond lengths			Bond angles		
					Counts	RMSZ	# Z  > 2	Counts	RMSZ	# Z  > 2
2	F42	B	202	-	29,32,55	4.08	13 (44%)	35,48,79	3.92	20 (57%)
3	MPD	B	203	-	7,7,7	0.51	0	9,10,10	0.90	0
3	MPD	B	204	-	7,7,7	0.33	0	9,10,10	1.09	0
4	MRD	B	205	-	7,7,7	0.24	0	9,10,10	1.17	2 (22%)
2	F42	C	201	-	29,32,55	4.19	15 (51%)	35,48,79	3.76	20 (57%)
3	MPD	C	202	-	7,7,7	0.38	0	9,10,10	0.93	0
4	MRD	C	203	-	7,7,7	0.15	0	9,10,10	0.95	0
2	F42	D	202	-	42,55,55	3.30	14 (33%)	48,79,79	3.32	20 (41%)
3	MPD	E	201	-	7,7,7	0.55	0	9,10,10	0.54	0
2	F42	F	201	-	29,32,55	4.41	13 (44%)	35,48,79	3.69	19 (54%)
3	MPD	F	202	-	7,7,7	0.31	0	9,10,10	0.65	0
3	MPD	F	203	-	7,7,7	0.35	0	9,10,10	0.77	0

In the following table, the Chirals column lists the number of chiral outliers, the number of chiral centers analysed, the number of these observed in the model and the number defined in the chemical component dictionary. Similar counts are reported in the Torsion and Rings columns. '-' means no outliers of that kind were identified.

Mol	Type	Chain	Res	Link	Chirals	Torsions	Rings
2	F42	A	201	-	-	0/18/18/53	0/3/3/3
3	MPD	A	202	-	-	0/5/5/5	0/0/0/0
2	F42	B	201	-	-	0/18/18/53	0/3/3/3
2	F42	B	202	-	-	0/18/18/53	0/3/3/3
3	MPD	B	203	-	-	0/5/5/5	0/0/0/0
3	MPD	B	204	-	-	0/5/5/5	0/0/0/0
4	MRD	B	205	-	-	0/5/5/5	0/0/0/0
2	F42	C	201	-	-	0/18/18/53	0/3/3/3
3	MPD	C	202	-	-	0/5/5/5	0/0/0/0
4	MRD	C	203	-	-	0/5/5/5	0/0/0/0
2	F42	D	202	-	-	0/43/53/53	0/3/3/3
3	MPD	E	201	-	-	0/5/5/5	0/0/0/0
2	F42	F	201	-	-	0/18/18/53	0/3/3/3
3	MPD	F	202	-	-	0/5/5/5	0/0/0/0
3	MPD	F	203	-	-	0/5/5/5	0/0/0/0

All (84) bond length outliers are listed below:

Mol	Chain	Res	Type	Atoms	Z	Observed(Å)	Ideal(Å)
2	B	201	F42	C10-N1	-13.89	1.29	1.46
2	F	201	F42	C5-C4A	-12.88	1.34	1.53
2	A	201	F42	C5-C4A	-11.25	1.36	1.53

*Continued on next page...*

*Continued from previous page...*

Mol	Chain	Res	Type	Atoms	Z	Observed(Å)	Ideal(Å)
2	A	201	F42	C10-N1	-10.93	1.33	1.46
2	D	202	F42	C5-C4A	-10.00	1.38	1.53
2	F	201	F42	C10-N1	-9.89	1.34	1.46
2	B	201	F42	C5-C4A	-9.82	1.39	1.53
2	C	201	F42	C10-N1	-9.78	1.34	1.46
2	C	201	F42	C5-C4A	-9.65	1.39	1.53
2	B	202	F42	C5-C4A	-9.43	1.39	1.53
2	D	202	F42	C10-N1	-9.21	1.35	1.46
2	B	202	F42	C9-C8	-7.85	1.37	1.51
2	B	202	F42	C10-N1	-7.61	1.37	1.46
2	D	202	F42	C9-C8	-7.21	1.38	1.51
2	F	201	F42	C9-C8	-7.19	1.38	1.51
2	B	202	F42	C6-C5A	-7.03	1.36	1.53
2	B	201	F42	C9-C8	-7.00	1.39	1.51
2	B	202	F42	C9-C9A	-6.94	1.37	1.53
2	A	201	F42	C9-C8	-6.86	1.39	1.51
2	B	202	F42	C5-C5A	-6.86	1.36	1.53
2	C	201	F42	C9-C8	-6.67	1.39	1.51
2	C	201	F42	C9-C9A	-6.64	1.38	1.53
2	C	201	F42	C5-C5A	-6.62	1.37	1.53
2	A	201	F42	C6-C5A	-6.56	1.37	1.53
2	F	201	F42	C6-C5A	-6.21	1.38	1.53
2	D	202	F42	C9-C9A	-6.18	1.39	1.53
2	A	201	F42	C9-C9A	-6.15	1.39	1.53
2	B	201	F42	C6-C5A	-6.08	1.38	1.53
2	F	201	F42	C5-C5A	-5.95	1.38	1.53
2	F	201	F42	C9-C9A	-5.94	1.40	1.53
2	D	202	F42	C5-C5A	-5.85	1.39	1.53
2	B	201	F42	C7-C8	-5.83	1.37	1.51
2	C	201	F42	C6-C5A	-5.80	1.39	1.53
2	C	201	F42	C9A-N10	-5.71	1.37	1.48
2	B	202	F42	C7-C6	-5.57	1.38	1.52
2	C	201	F42	C7-C8	-5.54	1.37	1.51
2	F	201	F42	C7-C6	-5.53	1.38	1.52
2	D	202	F42	C6-C5A	-5.51	1.39	1.53
2	A	201	F42	C5-C5A	-5.44	1.40	1.53
2	B	201	F42	C5-C5A	-5.42	1.40	1.53
2	B	201	F42	C7-C6	-5.27	1.39	1.52
2	F	201	F42	C5A-C9A	-5.17	1.43	1.53
2	B	201	F42	C9-C9A	-5.11	1.41	1.53
2	C	201	F42	C7-C6	-5.01	1.39	1.52
2	F	201	F42	C7-C8	-4.88	1.39	1.51

*Continued on next page...*

*Continued from previous page...*

Mol	Chain	Res	Type	Atoms	Z	Observed(Å)	Ideal(Å)
2	B	202	F42	C9A-N10	-4.85	1.39	1.48
2	D	202	F42	C7-C8	-4.66	1.40	1.51
2	A	201	F42	C7-C8	-4.65	1.40	1.51
2	A	201	F42	C7-C6	-4.63	1.40	1.52
2	B	202	F42	C7-C8	-4.60	1.40	1.51
2	D	202	F42	C9A-N10	-4.45	1.39	1.48
2	D	202	F42	C5A-C9A	-4.23	1.45	1.53
2	F	201	F42	C9A-N10	-4.20	1.40	1.48
2	B	201	F42	C5A-C9A	-4.17	1.45	1.53
2	B	202	F42	C4A-C4	-4.04	1.45	1.51
2	A	201	F42	C9A-N10	-4.00	1.40	1.48
2	D	202	F42	C7-C6	-3.80	1.43	1.52
2	B	201	F42	C9A-N10	-3.75	1.41	1.48
2	C	201	F42	C5A-C9A	-3.66	1.46	1.53
2	B	201	F42	C1'-C2'	-3.57	1.47	1.52
2	C	201	F42	C4A-C4	-3.41	1.46	1.51
2	A	201	F42	C4A-C4	-3.35	1.46	1.51
2	F	201	F42	C4A-C4	-3.03	1.46	1.51
2	A	201	F42	C1'-C2'	-2.91	1.48	1.52
2	B	201	F42	C4-N3	-2.81	1.32	1.37
2	A	201	F42	C5A-C9A	-2.81	1.48	1.53
2	A	201	F42	C4-N3	-2.72	1.32	1.37
2	B	202	F42	O8M-C8	-2.65	1.35	1.43
2	D	202	F42	C4A-C4	-2.58	1.47	1.51
2	C	201	F42	O8M-C8	-2.58	1.35	1.43
2	B	202	F42	C5A-C9A	-2.45	1.48	1.53
2	B	201	F42	O8M-C8	-2.40	1.36	1.43
2	D	202	F42	C1G-N1G	-2.39	1.43	1.46
2	C	201	F42	C4'-C3'	-2.36	1.48	1.53
2	D	202	F42	C1'-C2'	-2.32	1.49	1.52
2	F	201	F42	O8M-C8	-2.32	1.36	1.43
2	F	201	F42	C1'-C2'	-2.31	1.49	1.52
2	A	201	F42	O8M-C8	-2.19	1.37	1.43
2	D	202	F42	C4-N3	-2.12	1.33	1.37
2	B	201	F42	C4'-C3'	-2.06	1.49	1.53
2	A	201	F42	P-O3P	2.04	1.63	1.54
2	C	201	F42	P-O3P	2.34	1.64	1.54
2	C	201	F42	O4-C4	2.69	1.28	1.23
2	B	202	F42	P-O1P	3.17	1.61	1.50

All (117) bond angle outliers are listed below:

Mol	Chain	Res	Type	Atoms	Z	Observed(°)	Ideal(°)
2	B	202	F42	C4-N3-C2	-5.00	119.23	126.23
2	F	201	F42	O3'-C3'-C4'	-4.91	96.66	108.82
2	D	202	F42	O2-C2-N1	-4.04	114.39	122.89
2	B	201	F42	O2-C2-N1	-4.02	114.43	122.89
2	B	201	F42	C4-N3-C2	-3.77	120.95	126.23
2	A	201	F42	O3P-P-O5'	-3.37	97.78	106.73
2	B	202	F42	O3'-C3'-C4'	-3.32	100.59	108.82
2	B	202	F42	O2-C2-N1	-3.22	116.12	122.89
2	A	201	F42	O4'-C4'-C5'	-3.10	103.09	110.00
2	F	201	F42	O2-C2-N1	-2.81	116.98	122.89
2	B	201	F42	O3'-C3'-C4'	-2.76	101.99	108.82
2	D	202	F42	C3G-C1G-C2G	-2.70	108.36	112.28
2	F	201	F42	O2'-C2'-C1'	-2.69	104.02	110.10
2	C	201	F42	O3P-P-O5'	-2.39	100.38	106.73
2	C	201	F42	O4-C4-C4A	-2.34	117.98	122.05
4	B	205	MRD	O2-C2-CM	-2.30	100.04	108.00
2	B	201	F42	O5'-C5'-C4'	-2.21	103.47	109.36
2	C	201	F42	O2-C2-N1	-2.19	118.29	122.89
2	C	201	F42	O2'-C2'-C1'	-2.10	105.35	110.10
2	F	201	F42	C4-N3-C2	-2.03	123.39	126.23
2	D	202	F42	O8M-C8-C7	2.06	115.10	110.10
2	C	201	F42	O4-C4-N3	2.18	124.92	120.98
2	D	202	F42	C2I-C1I-C3I	2.19	116.67	111.16
2	C	201	F42	O2P-P-O1P	2.24	119.27	110.50
4	B	205	MRD	CM-C2-C1	2.27	115.49	110.42
2	B	202	F42	O2'-C2'-C1'	2.35	115.42	110.10
2	A	201	F42	C4A-C5-C5A	2.41	117.94	109.93
2	B	201	F42	O2P-P-O1P	2.51	120.31	110.50
2	B	202	F42	O2'-C2'-C3'	2.54	115.40	109.09
2	B	201	F42	O2P-P-O5'	2.58	113.60	106.73
2	B	202	F42	C4A-C5-C5A	2.63	118.69	109.93
2	D	202	F42	O4-C4-N3	2.64	125.77	120.98
2	F	201	F42	O2P-P-O1P	2.72	121.13	110.50
2	A	201	F42	O8M-C8-C7	2.95	117.24	110.10
2	D	202	F42	O3P-C1I-C3I	3.04	117.29	109.01
2	C	201	F42	C4A-C5-C5A	3.09	120.21	109.93
2	B	202	F42	C1'-N10-C9A	3.15	121.61	112.75
2	D	202	F42	O3I-C3I-N1H	3.17	128.87	122.90
2	F	201	F42	C1'-N10-C9A	3.19	121.74	112.75
2	D	202	F42	C6-C7-C8	3.26	117.33	111.61
2	A	201	F42	C6-C7-C8	3.27	117.35	111.61
2	D	202	F42	C1'-N10-C9A	3.34	122.14	112.75
2	B	202	F42	O3P-P-O2P	3.38	121.27	107.61

Continued on next page...

*Continued from previous page...*

Mol	Chain	Res	Type	Atoms	Z	Observed(°)	Ideal(°)
2	F	201	F42	C4A-C5-C5A	3.44	121.39	109.93
2	C	201	F42	O8M-C8-C7	3.48	118.53	110.10
2	C	201	F42	C7-C6-C5A	3.53	120.58	112.29
2	C	201	F42	C6-C5A-C9A	3.58	118.40	110.03
2	B	201	F42	C4A-C5-C5A	3.59	121.87	109.93
2	F	201	F42	C6-C5A-C9A	3.60	118.42	110.03
2	B	201	F42	O8M-C8-C9	3.65	117.17	109.87
2	B	202	F42	C6-C5A-C9A	3.70	118.66	110.03
2	D	202	F42	C4A-C5-C5A	3.70	122.24	109.93
2	B	202	F42	C5-C5A-C6	3.79	119.69	112.68
2	B	201	F42	C9-C9A-N10	3.83	121.57	113.12
2	B	201	F42	C6-C5A-C9A	3.86	119.04	110.03
2	D	202	F42	C7-C6-C5A	3.88	121.40	112.29
2	B	202	F42	O8M-C8-C9	3.89	117.64	109.87
2	B	202	F42	C9-C9A-N10	3.90	121.74	113.12
2	A	201	F42	C7-C6-C5A	3.92	121.50	112.29
2	A	201	F42	C1'-N10-C9A	3.93	123.82	112.75
2	A	201	F42	C5-C5A-C6	3.97	120.04	112.68
2	F	201	F42	C7-C6-C5A	3.98	121.64	112.29
2	B	202	F42	C7-C6-C5A	4.07	121.85	112.29
2	C	201	F42	C1'-N10-C9A	4.08	124.23	112.75
2	B	201	F42	C6-C7-C8	4.09	118.80	111.61
2	C	201	F42	C9-C9A-N10	4.09	122.15	113.12
2	B	201	F42	C1'-N10-C9A	4.12	124.34	112.75
2	A	201	F42	C9-C9A-N10	4.12	122.22	113.12
2	B	202	F42	C6-C7-C8	4.17	118.94	111.61
2	D	202	F42	C6-C5A-C9A	4.24	119.93	110.03
2	C	201	F42	C5-C5A-C6	4.26	120.56	112.68
2	F	201	F42	C9-C9A-N10	4.33	122.68	113.12
2	B	202	F42	O8M-C8-C7	4.34	120.63	110.10
2	B	201	F42	C7-C6-C5A	4.43	122.69	112.29
2	A	201	F42	C6-C5A-C9A	4.60	120.77	110.03
2	F	201	F42	C5-C5A-C6	4.65	121.30	112.68
2	F	201	F42	O8M-C8-C9	4.69	119.22	109.87
2	B	201	F42	O8M-C8-C7	4.69	121.47	110.10
2	D	202	F42	C5-C5A-C6	4.73	121.44	112.68
2	F	201	F42	O8M-C8-C7	4.82	121.77	110.10
2	A	201	F42	O8M-C8-C9	4.89	119.64	109.87
2	C	201	F42	C6-C7-C8	4.96	120.32	111.61
2	B	201	F42	C5-C4A-C4	5.08	121.45	111.13
2	C	201	F42	O8M-C8-C9	5.22	120.29	109.87
2	F	201	F42	C6-C7-C8	5.29	120.90	111.61

*Continued on next page...*

*Continued from previous page...*

Mol	Chain	Res	Type	Atoms	Z	Observed(°)	Ideal(°)
2	D	202	F42	C9-C9A-N10	5.29	124.80	113.12
2	C	201	F42	N3-C2-N1	5.43	121.79	116.14
2	F	201	F42	N3-C2-N1	5.59	121.97	116.14
2	D	202	F42	C5-C4A-C4	5.62	122.54	111.13
2	B	201	F42	C5-C5A-C9A	5.63	117.64	109.99
2	B	201	F42	C5-C5A-C6	5.68	123.21	112.68
2	B	202	F42	C5-C4A-C4	5.70	122.71	111.13
2	A	201	F42	C5-C4A-C4	5.94	123.21	111.13
2	A	201	F42	N3-C2-N1	6.03	122.42	116.14
2	F	201	F42	C9-C8-C7	6.08	118.11	110.55
2	D	202	F42	C5-C5A-C9A	6.33	118.59	109.99
2	F	201	F42	C5-C4A-C4	6.55	124.44	111.13
2	D	202	F42	O8M-C8-C9	6.74	123.31	109.87
2	A	201	F42	C5-C5A-C9A	6.75	119.17	109.99
2	C	201	F42	C5-C4A-C4	6.75	124.85	111.13
2	B	202	F42	N3-C2-N1	6.96	123.39	116.14
2	D	202	F42	N3-C2-N1	7.49	123.94	116.14
2	F	201	F42	C5-C5A-C9A	7.56	120.26	109.99
2	C	201	F42	C5-C5A-C9A	8.05	120.93	109.99
2	B	202	F42	C5-C5A-C9A	8.40	121.41	109.99
2	B	201	F42	N3-C2-N1	8.45	124.93	116.14
2	C	201	F42	C9-C8-C7	8.54	121.16	110.55
2	B	201	F42	C9-C8-C7	8.62	121.25	110.55
2	D	202	F42	C9-C8-C7	8.67	121.31	110.55
2	D	202	F42	C5-C4A-C10	8.80	119.25	107.84
2	B	202	F42	C9-C8-C7	8.92	121.63	110.55
2	F	201	F42	C5-C4A-C10	9.05	119.58	107.84
2	C	201	F42	C5-C4A-C10	9.20	119.77	107.84
2	B	202	F42	C5-C4A-C10	9.81	120.56	107.84
2	B	201	F42	C5-C4A-C10	9.93	120.72	107.84
2	A	201	F42	C9-C8-C7	10.10	123.10	110.55
2	A	201	F42	C5-C4A-C10	11.23	122.41	107.84

There are no chirality outliers.

There are no torsion outliers.

There are no ring outliers.

1 monomer is involved in 2 short contacts:

Mol	Chain	Res	Type	Clashes	Symm-Clashes
3	C	202	MPD	2	0

## 5.7 Other polymers

There are no such residues in this entry.

## 5.8 Polymer linkage issues

There are no chain breaks in this entry.

## 6 Fit of model and data ⓘ

### 6.1 Protein, DNA and RNA chains ⓘ

In the following table, the column labelled ‘#RSRZ> 2’ contains the number (and percentage) of RSRZ outliers, followed by percent RSRZ outliers for the chain as percentile scores relative to all X-ray entries and entries of similar resolution. The OWAB column contains the minimum, median, 95<sup>th</sup> percentile and maximum values of the occupancy-weighted average B-factor per residue. The column labelled ‘Q< 0.9’ lists the number of (and percentage) of residues with an average occupancy less than 0.9.

Mol	Chain	Analysed	<RSRZ>	#RSRZ>2	OWAB(Å <sup>2</sup> )	Q<0.9
1	A	129/154 (83%)	0.04	8 (6%) 21 24	10, 17, 45, 58	0
1	B	139/154 (90%)	0.08	3 (2%) 62 68	11, 18, 36, 61	0
1	C	129/154 (83%)	-0.11	5 (3%) 40 46	12, 19, 38, 60	0
1	D	138/154 (89%)	-0.29	1 (0%) 87 90	10, 17, 31, 45	0
1	E	125/154 (81%)	0.09	6 (4%) 31 36	10, 19, 53, 92	0
1	F	128/154 (83%)	-0.14	1 (0%) 86 88	11, 19, 37, 59	0
All	All	788/924 (85%)	-0.06	24 (3%) 51 56	10, 18, 40, 92	0

All (24) RSRZ outliers are listed below:

Mol	Chain	Res	Type	RSRZ
1	E	70	ARG	7.3
1	E	69	ASP	7.1
1	E	40	HIS	5.8
1	A	69	ASP	4.7
1	B	4	PHE	4.6
1	A	70	ARG	4.3
1	A	54	ALA	4.2
1	B	40	HIS	4.0
1	C	54	ALA	3.9
1	A	43	GLY	3.5
1	F	66	ALA	2.9
1	A	68	ILE	2.9
1	C	40	HIS	2.9
1	E	38	VAL	2.6
1	A	126	ASP	2.6
1	E	42	GLU	2.6
1	E	68	ILE	2.6
1	A	40	HIS	2.6
1	A	124	SER	2.5

*Continued on next page...*



*Continued from previous page...*

Mol	Chain	Res	Type	RSRZ
1	C	64	ARG	2.4
1	C	66	ALA	2.2
1	C	118	HIS	2.1
1	D	40	HIS	2.1
1	B	61	ASN	2.1

## 6.2 Non-standard residues in protein, DNA, RNA chains [i](#)

There are no non-standard protein/DNA/RNA residues in this entry.

## 6.3 Carbohydrates [i](#)

There are no carbohydrates in this entry.

## 6.4 Ligands [i](#)

In the following table, the Atoms column lists the number of modelled atoms in the group and the number defined in the chemical component dictionary. LLDF column lists the quality of electron density of the group with respect to its neighbouring residues in protein, DNA or RNA chains. The B-factors column lists the minimum, median, 95<sup>th</sup> percentile and maximum values of B factors of atoms in the group. The column labelled 'Q < 0.9' lists the number of atoms with occupancy less than 0.9.

Mol	Type	Chain	Res	Atoms	RSCC	RSR	LLDF	B-factors(Å <sup>2</sup> )	Q<0.9
3	MPD	F	203	8/8	0.91	0.14	4.61	32,39,42,42	0
3	MPD	B	204	8/8	0.86	0.15	4.15	30,32,35,37	0
3	MPD	E	201	8/8	0.90	0.23	3.31	52,54,56,58	0
5	NA	D	201	1/1	0.98	0.27	2.59	5,5,5,5	0
3	MPD	B	203	8/8	0.92	0.12	2.27	23,25,29,30	0
2	F42	B	201	30/53	0.92	0.10	1.50	12,15,49,56	0
3	MPD	A	202	8/8	0.89	0.15	1.25	32,35,39,40	0
4	MRD	C	203	8/8	0.90	0.15	1.11	31,33,36,37	0
4	MRD	B	205	8/8	0.91	0.12	0.87	24,26,29,32	0
2	F42	F	201	30/53	0.94	0.10	0.68	13,18,78,81	0
2	F42	B	202	30/53	0.91	0.12	0.48	15,20,61,64	0
3	MPD	F	202	8/8	0.94	0.12	0.47	32,34,36,37	0
3	MPD	C	202	8/8	0.96	0.09	0.33	21,23,24,24	8
2	F42	A	201	30/53	0.95	0.08	0.03	14,18,54,60	0
2	F42	C	201	30/53	0.93	0.10	0.00	15,18,54,57	0
2	F42	D	202	53/53	0.97	0.09	-0.23	10,13,39,60	0

## 6.5 Other polymers [i](#)

There are no such residues in this entry.