



wwPDB X-ray Structure Validation Summary Report ⓘ

Apr 3, 2017 – 03:43 PM EDT

PDB ID : 5JVL
Title : C4-type pyruvate phosphate dikinase: nucleotide binding domain with bound ATP analogue
Authors : Minges, A.; Hoepfner, A.; Groth, G.
Deposited on : 2016-05-11
Resolution : 2.90 Å(reported)

This is a wwPDB X-ray Structure Validation Summary Report for a publicly released PDB entry.

We welcome your comments at validation@mail.wwpdb.org

A user guide is available at

<http://wwpdb.org/validation/2016/XrayValidationReportHelp>

with specific help available everywhere you see the ⓘ symbol.

The following versions of software and data (see [references ⓘ](#)) were used in the production of this report:

MolProbity : 4.02b-467
Mogul : 1.7.2 (RC1), CSD as538be (2017)
Xtriage (Phenix) : 1.9-1692
EDS : rb-20029077
Percentile statistics : 20161228.v01 (using entries in the PDB archive December 28th 2016)
Refmac : 5.8.0135
CCP4 : 6.5.0
Ideal geometry (proteins) : Engh & Huber (2001)
Ideal geometry (DNA, RNA) : Parkinson et al. (1996)
Validation Pipeline (wwPDB-VP) : rb-20029077

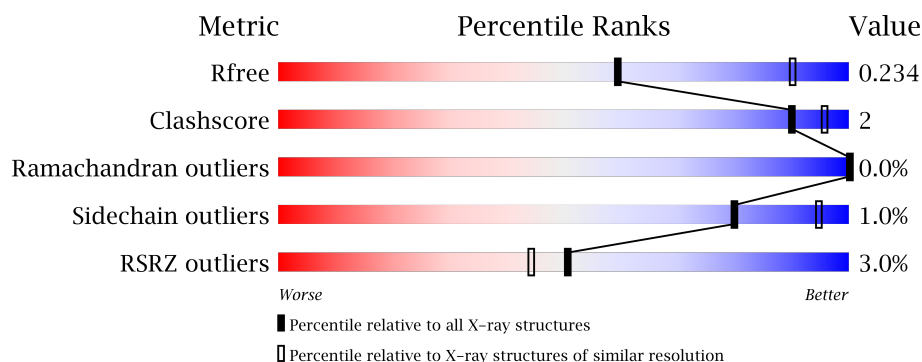
1 Overall quality at a glance

The following experimental techniques were used to determine the structure:

X-RAY DIFFRACTION

The reported resolution of this entry is 2.90 Å.

Percentile scores (ranging between 0-100) for global validation metrics of the entry are shown in the following graphic. The table shows the number of entries on which the scores are based.



Metric	Whole archive (#Entries)	Similar resolution (#Entries, resolution range(Å))
R_{free}	100719	1586 (2.90-2.90)
Clashscore	112137	1807 (2.90-2.90)
Ramachandran outliers	110173	1768 (2.90-2.90)
Sidechain outliers	110143	1770 (2.90-2.90)
RSRZ outliers	101464	1596 (2.90-2.90)

The table below summarises the geometric issues observed across the polymeric chains and their fit to the electron density. The red, orange, yellow and green segments on the lower bar indicate the fraction of residues that contain outliers for ≥ 3 , 2, 1 and 0 types of geometric quality criteria. A grey segment represents the fraction of residues that are not modelled. The numeric value for each fraction is indicated below the corresponding segment, with a dot representing fractions $\leq 5\%$. The upper red bar (where present) indicates the fraction of residues that have poor fit to the electron density. The numeric value is given above the bar.

Mol	Chain	Length	Quality of chain
1	A	874	<div> <div>2%</div> <div>93%</div> <div>6%</div> </div>
1	B	874	<div> <div>3%</div> <div>55%</div> <div>41%</div> </div>
1	C	874	<div> <div>3%</div> <div>92%</div> <div>6%</div> </div>
1	D	874	<div> <div>3%</div> <div>94%</div> <div>6%</div> </div>

2 Entry composition [i](#)

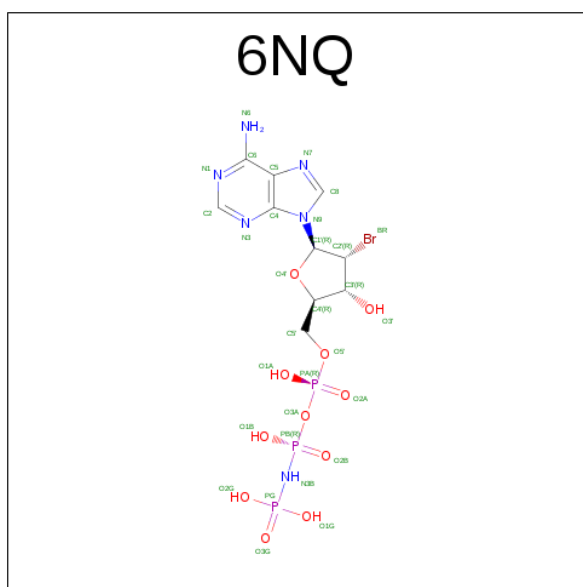
There are 4 unique types of molecules in this entry. The entry contains 23651 atoms, of which 0 are hydrogens and 0 are deuteriums.

In the tables below, the ZeroOcc column contains the number of atoms modelled with zero occupancy, the AltConf column contains the number of residues with at least one atom in alternate conformation and the Trace column contains the number of residues modelled with at most 2 atoms.

- Molecule 1 is a protein called Pyruvate, phosphate dikinase, chloroplastic.

Mol	Chain	Residues	Atoms					ZeroOcc	AltConf	Trace
1	A	874	Total	C	N	O	S	0	0	0
			6618	4157	1144	1269	48			
1	B	520	Total	C	N	O	S	0	0	0
			3819	2403	671	719	26			
1	C	859	Total	C	N	O	S	0	0	0
			6442	4056	1110	1231	45			
1	D	874	Total	C	N	O	S	0	2	0
			6632	4173	1141	1270	48			

- Molecule 2 is 2'-Bromo-2'-deoxyadenosine 5'-[beta,gamma-imide]triphosphoric acid (three-letter code: 6NQ) (formula: C₁₀H₁₆BrN₆O₁₁P₃).



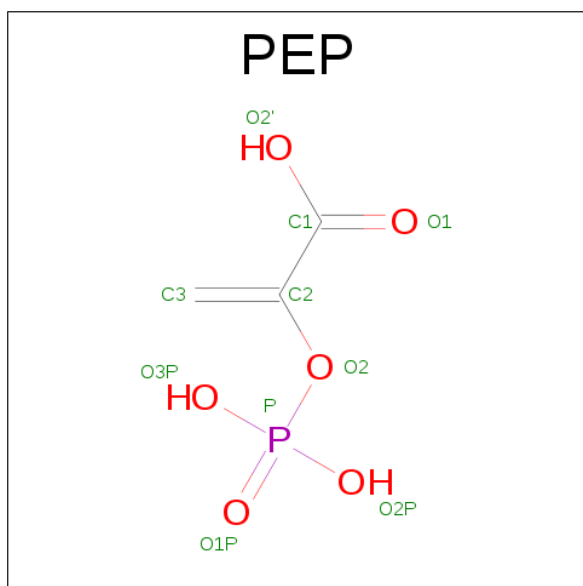
Continued from previous page...

Mol	Chain	Residues	Atoms						ZeroOcc	AltConf
2	D	1	Total	Br	C	N	O	P	0	0
			31	1	10	6	11	3		

- Molecule 3 is MAGNESIUM ION (three-letter code: MG) (formula: Mg).

Mol	Chain	Residues	Atoms		ZeroOcc	AltConf
3	B	1	Total	Mg	0	0
			1	1		
3	A	2	Total	Mg	0	0
			2	2		
3	D	2	Total	Mg	0	0
			2	2		
3	C	2	Total	Mg	0	0
			2	2		

- Molecule 4 is PHOSPHOENOLPYRUVATE (three-letter code: PEP) (formula: C₃H₅O₆P).



Mol	Chain	Residues	Atoms				ZeroOcc	AltConf
4	A	1	Total	C	O	P	0	0
			10	3	6	1		
4	B	1	Total	C	O	P	0	0
			10	3	6	1		
4	C	1	Total	C	O	P	0	0
			10	3	6	1		
4	D	1	Total	C	O	P	0	0
			10	3	6	1		

These plots are drawn for all protein, RNA and DNA chains in the entry. The first graphic for a chain summarises the proportions of the various outlier classes displayed in the second graphic. The second graphic shows the sequence view annotated by issues in geometry and electron density. Residues are color-coded according to the number of geometric quality criteria for which they contain at least one outlier: green = 0, yellow = 1, orange = 2 and red = 3 or more. A red dot above a residue indicates a poor fit to the electron density ($\text{RSRZ} > 2$). Stretches of 2 or more consecutive residues without any outlier are shown as a green connector. Residues present in the sample, but not in the model, are shown in grey.

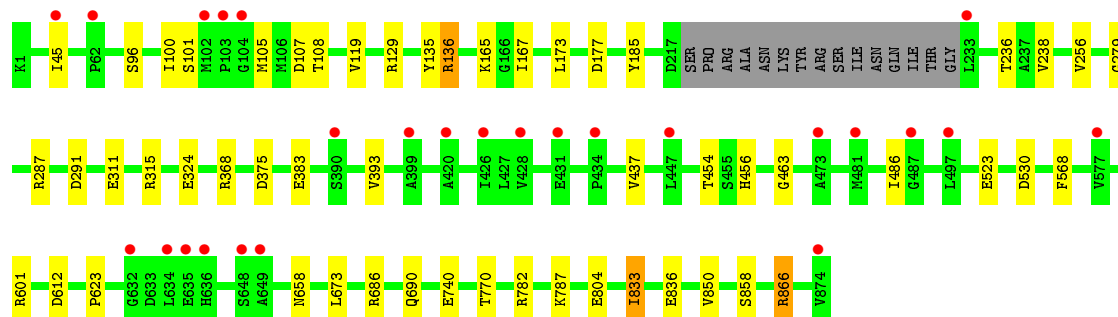
- Chain A:
-
- 2% 93% 6%

- [illegible]



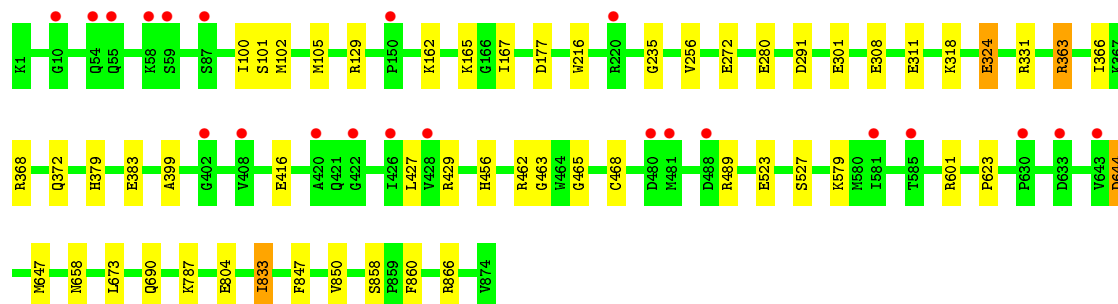
- Molecule 1: Pyruvate, phosphate dikinase, chloroplastic

Chain C: 3% 92% 6%



- Molecule 1: Pyruvate, phosphate dikinase, chloroplastic

Chain D: 3% 94% 6%



4 Data and refinement statistics

Property	Value	Source
Space group	P 1	Depositor
Cell constants a, b, c, α , β , γ	69.98Å 108.45Å 152.76Å 106.22° 101.81° 98.32°	Depositor
Resolution (Å)	19.79 – 2.90 19.79 – 2.90	Depositor EDS
% Data completeness (in resolution range)	98.3 (19.79-2.90) 88.3 (19.79-2.90)	Depositor EDS
R_{merge}	0.10	Depositor
R_{sym}	(Not available)	Depositor
$\langle I/\sigma(I) \rangle$ ¹	2.28 (at 2.88Å)	Xtriage
Refinement program	REFMAC 5.8.0135	Depositor
R, R_{free}	0.211 , 0.232 0.212 , 0.234	Depositor DCC
R_{free} test set	1874 reflections (2.13%)	DCC
Wilson B-factor (Å ²)	42.3	Xtriage
Anisotropy	0.412	Xtriage
Bulk solvent k_{sol} (e/Å ³), B_{sol} (Å ²)	0.34 , 42.0	EDS
L-test for twinning ²	$\langle L \rangle = 0.48$, $\langle L^2 \rangle = 0.31$	Xtriage
Estimated twinning fraction	0.010 for -h,-k,h+k+l	Xtriage
F_o, F_c correlation	0.91	EDS
Total number of atoms	23651	wwPDB-VP
Average B, all atoms (Å ²)	46.0	wwPDB-VP

Xtriage's analysis on translational NCS is as follows: *The largest off-origin peak in the Patterson function is 3.74% of the height of the origin peak. No significant pseudotranslation is detected.*

¹ Intensities estimated from amplitudes.

² Theoretical values of $\langle |L| \rangle$, $\langle L^2 \rangle$ for acentric reflections are 0.5, 0.333 respectively for untwinned datasets, and 0.375, 0.2 for perfectly twinned datasets.

5 Model quality

5.1 Standard geometry

Bond lengths and bond angles in the following residue types are not validated in this section: MG, PEP, 6NQ

The Z score for a bond length (or angle) is the number of standard deviations the observed value is removed from the expected value. A bond length (or angle) with $|Z| > 5$ is considered an outlier worth inspection. RMSZ is the root-mean-square of all Z scores of the bond lengths (or angles).

Mol	Chain	Bond lengths		Bond angles	
		RMSZ	$\# Z > 5$	RMSZ	$\# Z > 5$
1	A	0.90	5/6733 (0.1%)	0.77	8/9101 (0.1%)
1	B	0.87	2/3883 (0.1%)	0.78	7/5265 (0.1%)
1	C	0.90	8/6557 (0.1%)	0.76	12/8879 (0.1%)
1	D	0.91	9/6752 (0.1%)	0.76	12/9130 (0.1%)
All	All	0.90	24/23925 (0.1%)	0.77	39/32375 (0.1%)

Chiral center outliers are detected by calculating the chiral volume of a chiral center and verifying if the center is modelled as a planar moiety or with the opposite hand. A planarity outlier is detected by checking planarity of atoms in a peptide group, atoms in a mainchain group or atoms of a sidechain that are expected to be planar.

Mol	Chain	#Chirality outliers	#Planarity outliers
1	A	0	1

The worst 5 of 24 bond length outliers are listed below:

Mol	Chain	Res	Type	Atoms	Z	Observed(Å)	Ideal(Å)
1	D	416	GLU	CD-OE1	9.17	1.35	1.25
1	D	804	GLU	CD-OE1	7.24	1.33	1.25
1	C	804	GLU	CD-OE2	7.16	1.33	1.25
1	A	311	GLU	CD-OE2	7.09	1.33	1.25
1	C	804	GLU	CG-CD	7.04	1.62	1.51

The worst 5 of 39 bond angle outliers are listed below:

Mol	Chain	Res	Type	Atoms	Z	Observed(°)	Ideal(°)
1	D	416	GLU	OE1-CD-OE2	8.17	133.10	123.30
1	C	107	ASP	CB-CG-OD1	7.40	124.96	118.30
1	D	291	ASP	CB-CG-OD2	-7.23	111.80	118.30
1	D	129	ARG	NE-CZ-NH2	-6.95	116.82	120.30

Continued on next page...

Continued from previous page...

Mol	Chain	Res	Type	Atoms	Z	Observed(°)	Ideal(°)
1	B	782	ARG	NE-CZ-NH2	-6.84	116.88	120.30

There are no chirality outliers.

All (1) planarity outliers are listed below:

Mol	Chain	Res	Type	Group
1	A	513	LEU	Peptide

5.2 Too-close contacts [i](#)

In the following table, the Non-H and H(model) columns list the number of non-hydrogen atoms and hydrogen atoms in the chain respectively. The H(added) column lists the number of hydrogen atoms added and optimized by MolProbity. The Clashes column lists the number of clashes within the asymmetric unit, whereas Symm-Clashes lists symmetry related clashes.

Mol	Chain	Non-H	H(model)	H(added)	Clashes	Symm-Clashes
1	A	6618	0	6579	29	0
1	B	3819	0	3678	19	0
1	C	6442	0	6337	29	0
1	D	6632	0	6587	26	0
2	A	31	0	0	2	0
2	C	31	0	0	2	0
2	D	31	0	0	0	0
3	A	2	0	0	0	0
3	B	1	0	0	0	0
3	C	2	0	0	0	0
3	D	2	0	0	0	0
4	A	10	0	2	0	0
4	B	10	0	2	0	0
4	C	10	0	2	1	0
4	D	10	0	2	1	0
All	All	23651	0	23189	97	0

The all-atom clashscore is defined as the number of clashes found per 1000 atoms (including hydrogen atoms). The all-atom clashscore for this structure is 2.

The worst 5 of 97 close contacts within the same asymmetric unit are listed below, sorted by their clash magnitude.

Atom-1	Atom-2	Interatomic distance (Å)	Clash overlap (Å)
1:A:274:LEU:HD11	1:A:282:VAL:CG2	1.97	0.93

Continued on next page...

Continued from previous page...

Atom-1	Atom-2	Interatomic distance (Å)	Clash overlap (Å)
1:D:318:LYS:O	1:D:368:ARG:NH1	2.06	0.89
1:C:437:VAL:HG11	1:C:568:PHE:HB3	1.63	0.81
1:A:274:LEU:HD11	1:A:282:VAL:HG22	1.62	0.78
1:A:641:LEU:O	1:A:645:THR:HG22	1.84	0.78

There are no symmetry-related clashes.

5.3 Torsion angles [i](#)

5.3.1 Protein backbone [i](#)

In the following table, the Percentiles column shows the percent Ramachandran outliers of the chain as a percentile score with respect to all X-ray entries followed by that with respect to entries of similar resolution.

The Analysed column shows the number of residues for which the backbone conformation was analysed, and the total number of residues.

Mol	Chain	Analysed	Favoured	Allowed	Outliers	Percentiles	
1	A	872/874 (100%)	858 (98%)	14 (2%)	0	100	100
1	B	510/874 (58%)	498 (98%)	11 (2%)	1 (0%)	51	82
1	C	855/874 (98%)	842 (98%)	13 (2%)	0	100	100
1	D	874/874 (100%)	860 (98%)	14 (2%)	0	100	100
All	All	3111/3496 (89%)	3058 (98%)	52 (2%)	1 (0%)	100	100

All (1) Ramachandran outliers are listed below:

Mol	Chain	Res	Type
1	B	648	SER

5.3.2 Protein sidechains [i](#)

In the following table, the Percentiles column shows the percent sidechain outliers of the chain as a percentile score with respect to all X-ray entries followed by that with respect to entries of similar resolution.

The Analysed column shows the number of residues for which the sidechain conformation was analysed, and the total number of residues.

Mol	Chain	Analysed	Rotameric	Outliers	Percentiles	
1	A	701/715 (98%)	688 (98%)	13 (2%)	62	88
1	B	378/715 (53%)	374 (99%)	4 (1%)	78	94
1	C	671/715 (94%)	668 (100%)	3 (0%)	93	98
1	D	702/715 (98%)	696 (99%)	6 (1%)	82	95
All	All	2452/2860 (86%)	2426 (99%)	26 (1%)	80	94

5 of 26 residues with a non-rotameric sidechain are listed below:

Mol	Chain	Res	Type
1	A	657	GLU
1	B	388	TYR
1	D	644	ASP
1	A	833	ILE
1	B	320	MET

Some sidechains can be flipped to improve hydrogen bonding and reduce clashes. All (1) such sidechains are listed below:

Mol	Chain	Res	Type
1	A	813	GLN

5.3.3 RNA [i](#)

There are no RNA molecules in this entry.

5.4 Non-standard residues in protein, DNA, RNA chains [i](#)

There are no non-standard protein/DNA/RNA residues in this entry.

5.5 Carbohydrates [i](#)

There are no carbohydrates in this entry.

5.6 Ligand geometry [i](#)

Of 14 ligands modelled in this entry, 7 are monoatomic - leaving 7 for Mogul analysis.

In the following table, the Counts columns list the number of bonds (or angles) for which Mogul statistics could be retrieved, the number of bonds (or angles) that are observed in the model and

the number of bonds (or angles) that are defined in the chemical component dictionary. The Link column lists molecule types, if any, to which the group is linked. The Z score for a bond length (or angle) is the number of standard deviations the observed value is removed from the expected value. A bond length (or angle) with $|Z| > 2$ is considered an outlier worth inspection. RMSZ is the root-mean-square of all Z scores of the bond lengths (or angles).

Mol	Type	Chain	Res	Link	Bond lengths			Bond angles		
					Counts	RMSZ	# Z > 2	Counts	RMSZ	# Z > 2
2	6NQ	A	901	3	28,33,33	2.04	7 (25%)	26,52,52	2.30	7 (26%)
4	PEP	A	903	3	6,9,9	0.86	0	9,13,13	1.76	3 (33%)
4	PEP	B	901	3	6,9,9	1.04	0	9,13,13	2.06	5 (55%)
2	6NQ	C	901	3	28,33,33	3.21	6 (21%)	26,52,52	1.39	3 (11%)
4	PEP	C	903	3	6,9,9	1.23	1 (16%)	9,13,13	2.04	5 (55%)
2	6NQ	D	901	3	28,33,33	2.88	6 (21%)	26,52,52	1.86	7 (26%)
4	PEP	D	903	3	6,9,9	1.15	1 (16%)	9,13,13	2.73	6 (66%)

In the following table, the Chirals column lists the number of chiral outliers, the number of chiral centers analysed, the number of these observed in the model and the number defined in the chemical component dictionary. Similar counts are reported in the Torsion and Rings columns. '-' means no outliers of that kind were identified.

Mol	Type	Chain	Res	Link	Chirals	Torsions	Rings
2	6NQ	A	901	3	-	0/13/38/38	0/3/3/3
4	PEP	A	903	3	-	0/5/9/9	0/0/0/0
4	PEP	B	901	3	-	0/5/9/9	0/0/0/0
2	6NQ	C	901	3	-	0/13/38/38	0/3/3/3
4	PEP	C	903	3	-	0/5/9/9	0/0/0/0
2	6NQ	D	901	3	-	0/13/38/38	0/3/3/3
4	PEP	D	903	3	-	1/5/9/9	0/0/0/0

The worst 5 of 21 bond length outliers are listed below:

Mol	Chain	Res	Type	Atoms	Z	Observed(Å)	Ideal(Å)
2	A	901	6NQ	PB-O1B	-3.12	1.48	1.56
2	D	901	6NQ	PB-O1B	-2.65	1.49	1.56
2	A	901	6NQ	PG-O1G	-2.65	1.49	1.56
4	D	903	PEP	O2-C2	2.23	1.45	1.39
2	D	901	6NQ	BR-C2'	2.30	2.02	1.96

The worst 5 of 36 bond angle outliers are listed below:

Mol	Chain	Res	Type	Atoms	Z	Observed(°)	Ideal(°)
2	A	901	6NQ	O1G-PG-O3G	-6.58	96.70	113.41

Continued on next page...

Continued from previous page...

Mol	Chain	Res	Type	Atoms	Z	Observed($^{\circ}$)	Ideal($^{\circ}$)
2	A	901	6NQ	PA-O3A-PB	-5.21	113.98	132.38
2	A	901	6NQ	O2B-PB-N3B	-5.02	104.28	111.79
2	D	901	6NQ	PA-O3A-PB	-4.12	117.83	132.38
2	C	901	6NQ	PA-O3A-PB	-3.83	118.87	132.38

There are no chirality outliers.

All (1) torsion outliers are listed below:

Mol	Chain	Res	Type	Atoms
4	D	903	PEP	P-O2-C2-C3

There are no ring outliers.

4 monomers are involved in 6 short contacts:

Mol	Chain	Res	Type	Clashes	Symm-Clashes
2	A	901	6NQ	2	0
2	C	901	6NQ	2	0
4	C	903	PEP	1	0
4	D	903	PEP	1	0

5.7 Other polymers [i](#)

There are no such residues in this entry.

5.8 Polymer linkage issues [i](#)

There are no chain breaks in this entry.

6 Fit of model and data [i](#)

6.1 Protein, DNA and RNA chains [i](#)

In the following table, the column labelled ‘#RSRZ> 2’ contains the number (and percentage) of RSRZ outliers, followed by percent RSRZ outliers for the chain as percentile scores relative to all X-ray entries and entries of similar resolution. The OWAB column contains the minimum, median, 95th percentile and maximum values of the occupancy-weighted average B-factor per residue. The column labelled ‘Q< 0.9’ lists the number of (and percentage) of residues with an average occupancy less than 0.9.

Mol	Chain	Analysed	<RSRZ>	#RSRZ>2	OWAB(Å ²)	Q<0.9
1	A	874/874 (100%)	-0.17	17 (1%) 67 64	24, 42, 79, 109	0
1	B	520/874 (59%)	-0.07	30 (5%) 24 19	24, 43, 97, 133	0
1	C	859/874 (98%)	-0.08	26 (3%) 51 44	20, 46, 87, 127	0
1	D	874/874 (100%)	-0.22	22 (2%) 58 53	21, 41, 71, 122	0
All	All	3127/3496 (89%)	-0.14	95 (3%) 51 44	20, 43, 86, 133	0

The worst 5 of 95 RSRZ outliers are listed below:

Mol	Chain	Res	Type	RSRZ
1	C	635	GLU	5.7
1	C	104	GLY	5.5
1	C	103	PRO	4.3
1	B	457	ALA	4.2
1	A	284	ALA	4.2

6.2 Non-standard residues in protein, DNA, RNA chains [i](#)

There are no non-standard protein/DNA/RNA residues in this entry.

6.3 Carbohydrates [i](#)

There are no carbohydrates in this entry.

6.4 Ligands [i](#)

In the following table, the Atoms column lists the number of modelled atoms in the group and the number defined in the chemical component dictionary. LLDF column lists the quality of electron density of the group with respect to its neighbouring residues in protein, DNA or RNA chains. The B-factors column lists the minimum, median, 95th percentile and maximum values of B factors

of atoms in the group. The column labelled 'Q< 0.9' lists the number of atoms with occupancy less than 0.9.

Mol	Type	Chain	Res	Atoms	RSCC	RSR	LLDF	B-factors(\AA^2)	Q<0.9
2	6NQ	C	901	31/31	0.92	0.15	-0.54	24,37,56,63	0
4	PEP	A	903	10/10	0.98	0.11	-0.56	10,12,18,19	0
2	6NQ	D	901	31/31	0.95	0.14	-0.58	21,27,34,63	0
2	6NQ	A	901	31/31	0.95	0.13	-1.02	19,28,34,55	0
4	PEP	B	901	10/10	0.97	0.10	-1.08	12,13,20,21	0
4	PEP	C	903	10/10	0.98	0.10	-1.15	24,26,31,34	0
3	MG	A	904	1/1	0.94	0.09	-1.25	23,23,23,23	0
4	PEP	D	903	10/10	0.98	0.09	-1.78	22,24,26,27	0
3	MG	C	904	1/1	0.97	0.07	-2.82	20,20,20,20	0
3	MG	D	904	1/1	0.99	0.06	-2.95	11,11,11,11	0
3	MG	B	902	1/1	0.99	0.06	-3.26	25,25,25,25	0
3	MG	A	902	1/1	0.91	0.07	-	33,33,33,33	0
3	MG	D	902	1/1	0.85	0.10	-	30,30,30,30	0
3	MG	C	902	1/1	0.86	0.16	-	34,34,34,34	0

6.5 Other polymers

There are no such residues in this entry.