



# Full wwPDB X-ray Structure Validation Report ⓘ

Feb 12, 2017 – 07:21 pm GMT

PDB ID : 5JVW  
Title : Crystal structure of mithramycin analogue MTM SA-Trp in complex with a 10-mer DNA AGAGGCCTCT.  
Authors : Hou, C.; Rohr, J.; Tsodikov, O.V.  
Deposited on : 2016-05-11  
Resolution : 2.00 Å(reported)

This is a Full wwPDB X-ray Structure Validation Report for a publicly released PDB entry.

We welcome your comments at [validation@mail.wwpdb.org](mailto:validation@mail.wwpdb.org)

A user guide is available at

<http://wwpdb.org/validation/2016/XrayValidationReportHelp>

with specific help available everywhere you see the ⓘ symbol.

---

The following versions of software and data (see [references ⓘ](#)) were used in the production of this report:

MolProbity	:	4.02b-467
Mogul	:	1.7.2 (RC1), CSD as538be (2017)
Xtriage (Phenix)	:	1.9-1692
EDS	:	trunk28620
Percentile statistics	:	20161228.v01 (using entries in the PDB archive December 28th 2016)
Refmac	:	5.8.0135
CCP4	:	6.5.0
Ideal geometry (proteins)	:	Engh & Huber (2001)
Ideal geometry (DNA, RNA)	:	Parkinson et al. (1996)
Validation Pipeline (wwPDB-VP)	:	recalc28949

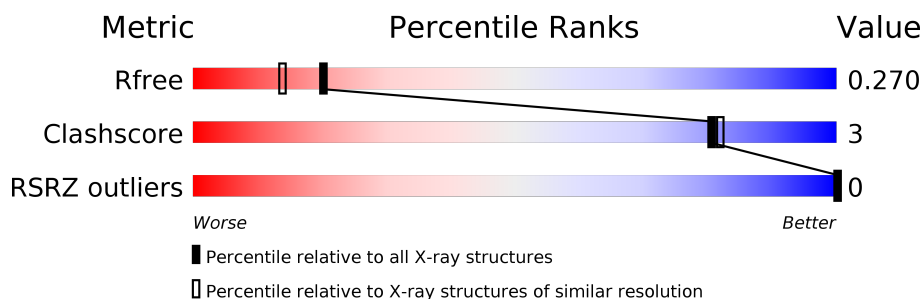
# 1 Overall quality at a glance

The following experimental techniques were used to determine the structure:

*X-RAY DIFFRACTION*




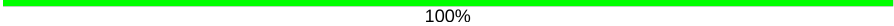
The reported resolution of this entry is 2.00 Å.

Percentile scores (ranging between 0-100) for global validation metrics of the entry are shown in the following graphic. The table shows the number of entries on which the scores are based.



Metric	Whole archive (#Entries)	Similar resolution (#Entries, resolution range(Å))
$R_{free}$	100719	6609 (2.00-2.00)
Clashscore	112137	7775 (2.00-2.00)
RSRZ outliers	101464	6696 (2.00-2.00)

The table below summarises the geometric issues observed across the polymeric chains and their fit to the electron density. The red, orange, yellow and green segments on the lower bar indicate the fraction of residues that contain outliers for  $\geq 3$ , 2, 1 and 0 types of geometric quality criteria. A grey segment represents the fraction of residues that are not modelled. The numeric value for each fraction is indicated below the corresponding segment, with a dot representing fractions  $\leq 5\%$ . The upper red bar (where present) indicates the fraction of residues that have poor fit to the electron density. The numeric value is given above the bar.

Mol	Chain	Length	Quality of chain
1	A	10	
1	B	10	
1	C	10	
1	D	10	

The following table lists non-polymeric compounds, carbohydrate monomers and non-standard residues in protein, DNA, RNA chains that are outliers for geometric or electron-density-fit criteria:

Mol	Type	Chain	Res	Chirality	Geometry	Clashes	Electron density
3	NA	C	108	-	-	-	X
4	6O6	C	102	-	-	-	X

## 2 Entry composition [i](#)

There are 5 unique types of molecules in this entry. The entry contains 1385 atoms, of which 0 are hydrogens and 0 are deuteriums.

In the tables below, the ZeroOcc column contains the number of atoms modelled with zero occupancy, the AltConf column contains the number of residues with at least one atom in alternate conformation and the Trace column contains the number of residues modelled with at most 2 atoms.

- Molecule 1 is a DNA chain called DNA (5'-D(\*AP\*GP\*AP\*GP\*GP\*CP\*CP\*TP\*CP\*T)-3').

Mol	Chain	Residues	Atoms					ZeroOcc	AltConf	Trace
1	A	10	Total	C	N	O	P	0	0	0
			202	97	38	58	9			
1	B	10	Total	C	N	O	P	0	0	0
			202	97	38	58	9			
1	C	10	Total	C	N	O	P	0	0	0
			201	97	38	57	9			
1	D	10	Total	C	N	O	P	0	0	0
			202	97	38	58	9			

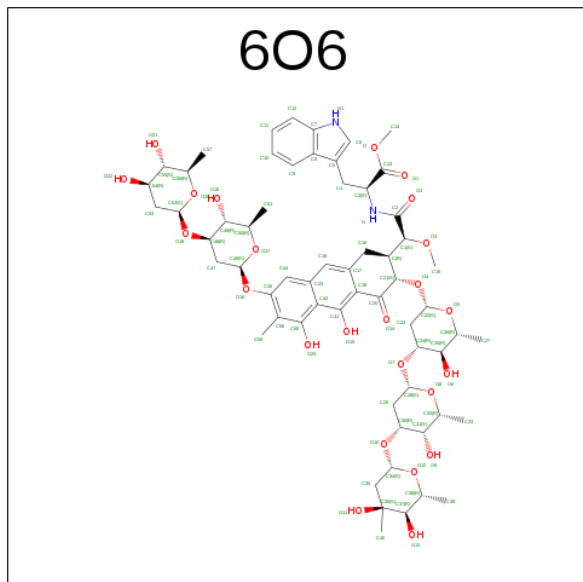
- Molecule 2 is ZINC ION (three-letter code: ZN) (formula: Zn).

Mol	Chain	Residues	Atoms		ZeroOcc	AltConf
2	B	3	Total	Zn	0	0
			3	3		
2	A	3	Total	Zn	0	0
			3	3		
2	D	2	Total	Zn	0	0
			2	2		
2	C	5	Total	Zn	0	0
			5	5		

- Molecule 3 is SODIUM ION (three-letter code: NA) (formula: Na).

Mol	Chain	Residues	Atoms		ZeroOcc	AltConf
3	B	1	Total	Na	0	0
			1	1		
3	A	1	Total	Na	0	0
			1	1		
3	D	3	Total	Na	0	0
			3	3		
3	C	2	Total	Na	0	0
			2	2		

- Molecule 4 is Plicamycin, mithramycin analogue MTM SA-Trp (three-letter code: 6O6) (formula:  $C_{61}H_{82}N_2O_{24}$ ).



Mol	Chain	Residues	Atoms				ZeroOcc	AltConf
4	B	1	Total	C	N	O	0	0
			87	61	2	24		
4	B	1	Total	C	N	O	0	0
			87	61	2	24		
4	C	1	Total	C	N	O	0	0
			87	61	2	24		
4	C	1	Total	C	N	O	0	0
			87	61	2	24		


- Molecule 5 is water.

Mol	Chain	Residues	Atoms		ZeroOcc	AltConf
5	A	49	Total	O	0	0
			49	49		
5	B	69	Total	O	0	0
			69	69		
5	C	55	Total	O	0	0
			55	55		
5	D	37	Total	O	0	0
			37	37		

### 3 Residue-property plots


These plots are drawn for all protein, RNA and DNA chains in the entry. The first graphic for a chain summarises the proportions of the various outlier classes displayed in the second graphic. The second graphic shows the sequence view annotated by issues in geometry and electron density. Residues are color-coded according to the number of geometric quality criteria for which they contain at least one outlier: green = 0, yellow = 1, orange = 2 and red = 3 or more. A red dot above a residue indicates a poor fit to the electron density ( $RSRZ > 2$ ). Stretches of 2 or more consecutive residues without any outlier are shown as a green connector. Residues present in the sample, but not in the model, are shown in grey.

- Molecule 1: DNA (5'-D(\*AP\*GP\*AP\*GP\*GP\*CP\*CP\*TP\*CP\*T)-3')

Chain A: 



- Molecule 1: DNA (5'-D(\*AP\*GP\*AP\*GP\*GP\*CP\*CP\*TP\*CP\*T)-3')

Chain B: 



- Molecule 1: DNA (5'-D(\*AP\*GP\*AP\*GP\*GP\*CP\*CP\*TP\*CP\*T)-3')

Chain C: 



- Molecule 1: DNA (5'-D(\*AP\*GP\*AP\*GP\*GP\*CP\*CP\*TP\*CP\*T)-3')

Chain D: 

There are no outlier residues recorded for this chain.

## 4 Data and refinement statistics

Property	Value	Source
Space group	P 21 21 21	Depositor
Cell constants a, b, c, $\alpha$ , $\beta$ , $\gamma$	34.57Å 50.66Å 92.06Å 90.00° 90.00° 90.00°	Depositor
Resolution (Å)	40.00 – 2.00 44.38 – 2.00	Depositor EDS
% Data completeness (in resolution range)	95.9 (40.00-2.00) 95.8 (44.38-2.00)	Depositor EDS
$R_{merge}$	0.13	Depositor
$R_{sym}$	(Not available)	Depositor
$\langle I/\sigma(I) \rangle$ <sup>1</sup>	3.62 (at 2.00Å)	Xtriage
Refinement program	REFMAC 5.8.0135	Depositor
R, $R_{free}$	0.219 , 0.267 0.224 , 0.270	Depositor DCC
$R_{free}$ test set	574 reflections (5.50%)	DCC
Wilson B-factor (Å <sup>2</sup> )	16.0	Xtriage
Anisotropy	1.363	Xtriage
Bulk solvent $k_{sol}$ (e/Å <sup>3</sup> ), $B_{sol}$ (Å <sup>2</sup> )	0.31 , 49.9	EDS
L-test for twinning <sup>2</sup>	$\langle  L  \rangle = 0.48$ , $\langle L^2 \rangle = 0.32$	Xtriage
Estimated twinning fraction	No twinning to report.	Xtriage
$F_o, F_c$ correlation	0.94	EDS
Total number of atoms	1385	wwPDB-VP
Average B, all atoms (Å <sup>2</sup> )	17.0	wwPDB-VP

Xtriage's analysis on translational NCS is as follows: *The largest off-origin peak in the Patterson function is 12.61% of the height of the origin peak. No significant pseudotranslation is detected.*

<sup>1</sup>Intensities estimated from amplitudes.

<sup>2</sup>Theoretical values of  $\langle |L| \rangle$ ,  $\langle L^2 \rangle$  for acentric reflections are 0.5, 0.333 respectively for untwinned datasets, and 0.375, 0.2 for perfectly twinned datasets.

## 5 Model quality [i](#)

### 5.1 Standard geometry [i](#)

Bond lengths and bond angles in the following residue types are not validated in this section: NA, ZN, 6O6

The Z score for a bond length (or angle) is the number of standard deviations the observed value is removed from the expected value. A bond length (or angle) with  $|Z| > 5$  is considered an outlier worth inspection. RMSZ is the root-mean-square of all Z scores of the bond lengths (or angles).

Mol	Chain	Bond lengths		Bond angles	
		RMSZ	$\# Z  > 5$	RMSZ	$\# Z  > 5$
1	A	0.35	0/226	0.76	0/347
1	B	0.41	0/226	0.83	1/347 (0.3%)
1	C	0.41	0/225	0.75	1/346 (0.3%)
1	D	0.35	0/226	0.75	0/347
All	All	0.38	0/903	0.78	2/1387 (0.1%)

There are no bond length outliers.

All (2) bond angle outliers are listed below:

Mol	Chain	Res	Type	Atoms	Z	Observed(°)	Ideal(°)
1	C	9	DC	O4'-C4'-C3'	-5.90	102.14	104.50
1	B	9	DC	C1'-O4'-C4'	-5.83	104.27	110.10

There are no chirality outliers.

There are no planarity outliers.

### 5.2 Too-close contacts [i](#)

In the following table, the Non-H and H(model) columns list the number of non-hydrogen atoms and hydrogen atoms in the chain respectively. The H(added) column lists the number of hydrogen atoms added and optimized by MolProbity. The Clashes column lists the number of clashes within the asymmetric unit, whereas Symm-Clashes lists symmetry related clashes.

Mol	Chain	Non-H	H(model)	H(added)	Clashes	Symm-Clashes
1	A	202	0	114	2	0
1	B	202	0	114	0	0
1	C	201	0	111	1	0
1	D	202	0	114	0	0
2	A	3	0	0	0	0

*Continued on next page...*



*Continued from previous page...*

Mol	Chain	Non-H	H(model)	H(added)	Clashes	Symm-Clashes
2	B	3	0	0	0	0
2	C	5	0	0	0	0
2	D	2	0	0	0	0
3	A	1	0	0	0	0
3	B	1	0	0	0	0
3	C	2	0	0	0	0
3	D	3	0	0	0	0
4	B	174	0	0	1	0
4	C	174	0	0	1	0
5	A	49	0	0	0	0
5	B	69	0	0	0	0
5	C	55	0	0	0	0
5	D	37	0	0	0	0
All	All	1385	0	453	5	0

The all-atom clashscore is defined as the number of clashes found per 1000 atoms (including hydrogen atoms). The all-atom clashscore for this structure is 3.

All (5) close contacts within the same asymmetric unit are listed below, sorted by their clash magnitude.

Atom-1	Atom-2	Interatomic distance (Å)	Clash overlap (Å)
1:A:7:DC:H2'	1:A:8:DT:H72	1.88	0.56
1:C:3:DA:H2'	1:C:4:DG:O4'	2.12	0.49
4:C:102:6O6:O15	4:C:102:6O6:O23	2.29	0.48
4:B:101:6O6:O23	4:B:101:6O6:O15	2.36	0.43
1:A:7:DC:H2'	1:A:8:DT:C7	2.51	0.40

There are no symmetry-related clashes.

## 5.3 Torsion angles [i](#)

### 5.3.1 Protein backbone [i](#)

There are no protein molecules in this entry.

### 5.3.2 Protein sidechains [i](#)

There are no protein molecules in this entry.

### 5.3.3 RNA ⓘ

There are no RNA molecules in this entry.

## 5.4 Non-standard residues in protein, DNA, RNA chains ⓘ

There are no non-standard protein/DNA/RNA residues in this entry.

## 5.5 Carbohydrates ⓘ

There are no carbohydrates in this entry.

## 5.6 Ligand geometry ⓘ

Of 24 ligands modelled in this entry, 20 are monoatomic - leaving 4 for Mogul analysis.

In the following table, the Counts columns list the number of bonds (or angles) for which Mogul statistics could be retrieved, the number of bonds (or angles) that are observed in the model and the number of bonds (or angles) that are defined in the chemical component dictionary. The Link column lists molecule types, if any, to which the group is linked. The Z score for a bond length (or angle) is the number of standard deviations the observed value is removed from the expected value. A bond length (or angle) with  $|Z| > 2$  is considered an outlier worth inspection. RMSZ is the root-mean-square of all Z scores of the bond lengths (or angles).

Mol	Type	Chain	Res	Link	Bond lengths			Bond angles		
					Counts	RMSZ	$\# Z  > 2$	Counts	RMSZ	$\# Z  > 2$
4	6O6	B	101	2	94,96,96	1.02	5 (5%)	124,145,145	2.09	30 (24%)
4	6O6	B	102	2	94,96,96	1.03	3 (3%)	124,145,145	2.14	36 (29%)
4	6O6	C	101	2	94,96,96	1.02	4 (4%)	124,145,145	1.73	27 (21%)
4	6O6	C	102	3,2	94,96,96	0.97	2 (2%)	124,145,145	2.06	27 (21%)

In the following table, the Chirals column lists the number of chiral outliers, the number of chiral centers analysed, the number of these observed in the model and the number defined in the chemical component dictionary. Similar counts are reported in the Torsion and Rings columns. '-' means no outliers of that kind were identified.

Mol	Type	Chain	Res	Link	Chirals	Torsions	Rings
4	6O6	B	101	2	-	0/43/143/143	0/10/10/10
4	6O6	B	102	2	-	0/43/143/143	0/10/10/10
4	6O6	C	101	2	-	0/43/143/143	0/10/10/10
4	6O6	C	102	3,2	-	0/43/143/143	0/10/10/10

All (14) bond length outliers are listed below:

Mol	Chain	Res	Type	Atoms	Z	Observed(Å)	Ideal(Å)
4	B	102	6O6	C47-C46	2.04	1.55	1.51
4	B	101	6O6	C19-C20	2.10	1.51	1.46
4	B	101	6O6	C44-C45	2.13	1.40	1.36
4	B	101	6O6	O14-C20	2.36	1.25	1.22
4	B	101	6O6	C-C1	2.40	1.56	1.53
4	C	101	6O6	C44-C45	2.48	1.41	1.36
4	C	101	6O6	C31-C30	2.58	1.58	1.53
4	C	102	6O6	C44-C45	2.71	1.41	1.36
4	B	102	6O6	C31-C32	3.31	1.59	1.53
4	C	101	6O6	C31-C32	3.79	1.60	1.53
4	C	101	6O6	O-C13	4.52	1.44	1.33
4	B	102	6O6	O-C13	4.78	1.45	1.33
4	B	101	6O6	O-C13	4.93	1.45	1.33
4	C	102	6O6	O-C13	4.99	1.45	1.33

All (120) bond angle outliers are listed below:

Mol	Chain	Res	Type	Atoms	Z	Observed(°)	Ideal(°)
4	B	102	6O6	O12-C38-C37	-8.02	95.16	110.03
4	C	101	6O6	O12-C38-C37	-7.85	95.48	110.03
4	C	102	6O6	O12-C38-C37	-7.22	96.64	110.03
4	B	101	6O6	O12-C38-C37	-6.34	98.28	110.03
4	C	102	6O6	O12-C34-C35	-6.02	100.66	112.21
4	B	101	6O6	C29-C30-C31	-5.69	102.29	110.75
4	B	101	6O6	O8-C32-C31	-5.43	100.68	109.62
4	C	102	6O6	C29-C30-C31	-5.42	102.69	110.75
4	C	101	6O6	C29-C30-C31	-5.41	102.70	110.75
4	B	101	6O6	C16-C17-C18	-4.90	112.97	121.15
4	B	102	6O6	O12-C34-C35	-4.64	103.31	112.21
4	C	101	6O6	O12-C34-C35	-4.57	103.44	112.21
4	B	102	6O6	O14-C20-C19	-4.22	116.19	122.82
4	C	102	6O6	O8-C32-C31	-4.17	102.76	109.62
4	C	101	6O6	O8-C32-C31	-4.10	102.88	109.62
4	B	102	6O6	C16-C17-C18	-4.04	114.40	121.15
4	B	102	6O6	C44-C45-C58	-3.89	117.62	122.36
4	B	101	6O6	O4-C21-C	-3.62	100.47	110.09
4	B	102	6O6	C34-O12-C38	-3.55	105.50	114.19
4	B	102	6O6	O8-C32-C31	-3.52	103.83	109.62
4	C	102	6O6	C41-C19-C17	-3.42	117.62	119.80
4	B	101	6O6	C34-O12-C38	-3.35	106.00	114.19
4	B	101	6O6	O12-C34-C35	-3.26	105.96	112.21
4	B	101	6O6	C36-C35-C34	-3.25	108.82	114.94

*Continued on next page...*

*Continued from previous page...*

Mol	Chain	Res	Type	Atoms	Z	Observed(°)	Ideal(°)
4	B	101	6O6	O7-C24-C23	-3.10	103.89	109.77
4	C	102	6O6	O9-C31-C30	-3.02	101.66	109.28
4	C	101	6O6	O-C13-O1	-2.97	117.83	123.82
4	B	101	6O6	C41-C19-C17	-2.93	117.93	119.80
4	B	102	6O6	C40-C36-C35	-2.90	105.36	110.73
4	C	102	6O6	C36-C35-C34	-2.88	109.52	114.94
4	B	101	6O6	O-C13-O1	-2.85	118.09	123.82
4	B	102	6O6	C44-C43-C18	-2.82	116.50	122.19
4	B	101	6O6	O9-C31-C30	-2.81	102.19	109.28
4	C	101	6O6	O14-C20-C19	-2.81	118.40	122.82
4	B	101	6O6	C10-C9-C8	-2.58	117.19	120.88
4	B	102	6O6	O7-C24-C23	-2.52	105.00	109.77
4	C	102	6O6	O7-C24-C23	-2.47	105.09	109.77
4	B	101	6O6	O4-C22-C23	-2.44	104.16	108.47
4	C	102	6O6	C34-O12-C38	-2.43	108.24	114.19
4	B	101	6O6	C4-C3-N	-2.40	105.71	110.80
4	C	102	6O6	O-C13-O1	-2.36	119.06	123.82
4	C	102	6O6	O4-C21-C	-2.33	103.90	110.09
4	C	101	6O6	O4-C21-C	-2.33	103.90	110.09
4	B	102	6O6	C29-C30-C31	-2.33	107.28	110.75
4	B	102	6O6	O7-C28-O8	-2.33	102.43	110.05
4	B	102	6O6	C4-C3-N	-2.32	105.88	110.80
4	B	102	6O6	O5-C26-C25	-2.27	105.88	109.62
4	C	102	6O6	C39-C38-C37	-2.23	108.69	112.63
4	B	102	6O6	O4-C21-C	-2.21	104.22	110.09
4	C	101	6O6	C34-O12-C38	-2.19	108.83	114.19
4	B	101	6O6	O7-C28-O8	-2.18	102.91	110.05
4	B	102	6O6	C15-O3-C1	-2.15	110.61	113.80
4	C	101	6O6	C33-C32-C31	-2.14	109.27	113.07
4	C	101	6O6	O17-C46-O16	-2.14	105.12	108.31
4	B	102	6O6	C10-C9-C8	-2.12	117.84	120.88
4	C	102	6O6	C4-C3-N	-2.12	106.31	110.80
4	C	102	6O6	C10-C9-C8	-2.08	117.90	120.88
4	B	102	6O6	C28-O7-C24	-2.08	111.79	116.31
4	C	101	6O6	O7-C24-C23	-2.06	105.87	109.77
4	C	101	6O6	O4-C22-C23	-2.05	104.85	108.47
4	C	101	6O6	C4-C3-N	-2.04	106.48	110.80
4	B	102	6O6	O21-C55-C54	-2.01	106.37	110.02
4	B	101	6O6	O13-C37-C38	2.01	112.97	109.41
4	C	101	6O6	C13-C3-N	2.01	115.43	110.70
4	C	102	6O6	O8-C28-C29	2.02	113.94	110.83
4	B	101	6O6	C18-C17-C19	2.05	121.87	118.41

*Continued on next page...*

*Continued from previous page...*

Mol	Chain	Res	Type	Atoms	Z	Observed(°)	Ideal(°)
4	C	101	6O6	O20-C56-C57	2.10	111.13	106.69
4	B	102	6O6	O10-C34-O12	2.10	116.95	110.05
4	B	102	6O6	C46-C47-C48	2.11	115.09	111.03
4	B	102	6O6	C14-O-C13	2.18	121.07	115.97
4	C	101	6O6	C9-C8-C7	2.21	121.09	118.17
4	C	102	6O6	O13-C37-C38	2.23	113.37	109.41
4	B	102	6O6	O10-C30-C29	2.24	114.03	109.77
4	B	101	6O6	C41-C19-C20	2.30	123.16	120.24
4	B	102	6O6	O5-C22-C23	2.37	114.49	110.83
4	B	101	6O6	C45-C58-C60	2.48	119.70	116.79
4	C	101	6O6	O16-C46-C47	2.49	110.00	107.25
4	C	102	6O6	C59-C58-C45	2.52	124.34	120.64
4	C	101	6O6	C16-C17-C19	2.52	122.42	117.96
4	C	101	6O6	C45-C58-C60	2.56	119.79	116.79
4	C	102	6O6	C9-C8-C7	2.56	121.56	118.17
4	B	102	6O6	C9-C8-C7	2.65	121.68	118.17
4	C	101	6O6	O9-C31-C32	2.67	115.70	109.74
4	C	102	6O6	C45-O16-C46	2.68	123.03	118.26
4	C	102	6O6	O8-C32-C33	2.70	112.40	106.69
4	B	101	6O6	C9-C8-C7	2.84	121.94	118.17
4	B	102	6O6	O14-C20-C21	2.89	124.12	120.17
4	B	101	6O6	O8-C28-C29	2.95	115.38	110.83
4	C	102	6O6	O-C13-C3	2.98	119.42	111.54
4	B	101	6O6	O16-C45-C58	3.01	116.64	114.28
4	B	101	6O6	C45-O16-C46	3.04	123.69	118.26
4	C	101	6O6	C45-O16-C46	3.05	123.69	118.26
4	C	101	6O6	O16-C45-C58	3.14	116.74	114.28
4	C	101	6O6	O8-C32-C33	3.14	113.35	106.69
4	B	101	6O6	C13-C3-N	3.15	118.08	110.70
4	C	101	6O6	O10-C34-C35	3.24	114.68	108.94
4	C	101	6O6	O12-C38-C39	3.26	113.58	106.69
4	B	102	6O6	O8-C28-C29	3.27	115.88	110.83
4	B	102	6O6	C23-C24-C25	3.36	115.75	110.75
4	B	101	6O6	O8-C32-C33	3.37	113.83	106.69
4	B	101	6O6	C41-C42-C43	3.47	121.22	118.20
4	B	102	6O6	O12-C38-C39	3.53	114.17	106.69
4	C	102	6O6	O10-C34-C35	3.55	115.22	108.94
4	C	101	6O6	O-C13-C3	3.56	120.94	111.54
4	C	102	6O6	C19-C41-C42	3.72	123.98	121.17
4	B	102	6O6	O9-C31-C30	3.82	118.91	109.28
4	B	102	6O6	C45-C58-C60	3.99	121.48	116.79
4	B	102	6O6	O9-C31-C32	4.00	118.66	109.74

*Continued on next page...*

*Continued from previous page...*

Mol	Chain	Res	Type	Atoms	Z	Observed(°)	Ideal(°)
4	B	101	6O6	C16-C17-C19	4.07	125.15	117.96
4	C	101	6O6	O9-C31-C30	4.15	119.74	109.28
4	C	102	6O6	O12-C38-C39	4.29	115.77	106.69
4	B	102	6O6	O16-C46-C47	4.43	112.14	107.25
4	C	102	6O6	C60-C42-C43	4.44	122.06	118.20
4	B	101	6O6	O-C13-C3	4.54	123.55	111.54
4	B	102	6O6	C16-C17-C19	4.60	126.09	117.96
4	B	102	6O6	C45-O16-C46	6.51	129.86	118.26
4	C	102	6O6	O16-C45-C58	7.22	119.93	114.28
4	B	102	6O6	O16-C45-C58	7.78	120.36	114.28
4	C	102	6O6	O9-C31-C32	9.47	130.85	109.74
4	B	101	6O6	O9-C31-C32	9.97	131.95	109.74

There are no chirality outliers.

There are no torsion outliers.

There are no ring outliers.

2 monomers are involved in 2 short contacts:

Mol	Chain	Res	Type	Clashes	Symm-Clashes
4	B	101	6O6	1	0
4	C	102	6O6	1	0

## 5.7 Other polymers [i](#)

There are no such residues in this entry.

## 5.8 Polymer linkage issues [i](#)

There are no chain breaks in this entry.

## 6 Fit of model and data [i](#)

### 6.1 Protein, DNA and RNA chains [i](#)

In the following table, the column labelled ‘#RSRZ> 2’ contains the number (and percentage) of RSRZ outliers, followed by percent RSRZ outliers for the chain as percentile scores relative to all X-ray entries and entries of similar resolution. The OWAB column contains the minimum, median, 95<sup>th</sup> percentile and maximum values of the occupancy-weighted average B-factor per residue. The column labelled ‘Q< 0.9’ lists the number of (and percentage) of residues with an average occupancy less than 0.9.

Mol	Chain	Analysed	<RSRZ>	#RSRZ>2	OWAB(Å <sup>2</sup> )	Q<0.9
1	A	10/10 (100%)	-0.15	0 100 100	14, 16, 21, 21	0
1	B	10/10 (100%)	-0.23	0 100 100	12, 15, 18, 20	0
1	C	10/10 (100%)	-0.11	0 100 100	14, 16, 25, 26	0
1	D	10/10 (100%)	-0.13	0 100 100	11, 14, 25, 25	0
All	All	40/40 (100%)	-0.16	0 100 100	11, 16, 25, 26	0

There are no RSRZ outliers to report.

### 6.2 Non-standard residues in protein, DNA, RNA chains [i](#)

There are no non-standard protein/DNA/RNA residues in this entry.

### 6.3 Carbohydrates [i](#)

There are no carbohydrates in this entry.

### 6.4 Ligands [i](#)

In the following table, the Atoms column lists the number of modelled atoms in the group and the number defined in the chemical component dictionary. LLDF column lists the quality of electron density of the group with respect to its neighbouring residues in protein, DNA or RNA chains. The B-factors column lists the minimum, median, 95<sup>th</sup> percentile and maximum values of B factors of atoms in the group. The column labelled ‘Q< 0.9’ lists the number of atoms with occupancy less than 0.9.

Mol	Type	Chain	Res	Atoms	RSCC	RSR	LLDF	B-factors(Å <sup>2</sup> )	Q<0.9
3	NA	C	108	1/1	0.76	0.14	2.95	22,22,22,22	0
4	6O6	C	102	87/87	0.90	0.15	2.58	12,15,19,20	0

*Continued on next page...*

*Continued from previous page...*

Mol	Type	Chain	Res	Atoms	RSCC	RSR	LLDF	B-factors( $\text{\AA}^2$ )	Q<0.9
4	6O6	B	101	87/87	0.87	0.16	1.96	12,13,16,16	0
4	6O6	C	101	87/87	0.89	0.15	0.81	13,15,17,18	0
4	6O6	B	102	87/87	0.91	0.14	0.73	10,12,19,23	0
2	ZN	A	102	1/1	0.95	0.06	-5.50	15,15,15,15	0
2	ZN	C	105	1/1	0.94	0.06	-6.01	16,16,16,16	0
2	ZN	B	105	1/1	0.91	0.29	-	53,53,53,53	0
3	NA	D	104	1/1	0.65	0.23	-	25,25,25,25	0
3	NA	D	105	1/1	0.59	0.30	-	29,29,29,29	0
2	ZN	D	101	1/1	0.95	0.05	-	24,24,24,24	0
2	ZN	A	103	1/1	0.99	0.02	-	17,17,17,17	0
2	ZN	B	104	1/1	0.99	0.03	-	11,11,11,11	0
2	ZN	A	101	1/1	0.95	0.05	-	22,22,22,22	0
3	NA	D	103	1/1	0.96	0.22	-	16,16,16,16	0
3	NA	C	109	1/1	0.74	0.27	-	32,32,32,32	0
3	NA	A	104	1/1	0.82	0.29	-	36,36,36,36	0
2	ZN	D	102	1/1	0.99	0.03	-	12,12,12,12	0
2	ZN	C	103	1/1	0.92	0.07	-	36,36,36,36	0
2	ZN	C	107	1/1	0.58	0.39	-	69,69,69,69	0
2	ZN	C	104	1/1	0.99	0.04	-	16,16,16,16	0
3	NA	B	106	1/1	0.69	0.22	-	24,24,24,24	0
2	ZN	B	103	1/1	0.92	0.15	-	32,32,32,32	0
2	ZN	C	106	1/1	0.68	0.41	-	65,65,65,65	0

## 6.5 Other polymers [i](#)

There are no such residues in this entry.