



Full wwPDB X-ray Structure Validation Report ⓘ

Feb 13, 2017 – 08:59 pm GMT

PDB ID : 4JYB
Title : MeaB, A Bacterial Homolog of MMAA, Bound to GMPPNP
Authors : Koutmos, M.; Lofgren, M.; Padovani, D.; Banerjee, R.
Deposited on : 2013-03-29
Resolution : 2.10 Å(reported)

This is a Full wwPDB X-ray Structure Validation Report for a publicly released PDB entry.

We welcome your comments at validation@mail.wwpdb.org

A user guide is available at

<http://wwpdb.org/validation/2016/XrayValidationReportHelp>

with specific help available everywhere you see the ⓘ symbol.

The following versions of software and data (see [references ⓘ](#)) were used in the production of this report:

MolProbity	:	4.02b-467
Mogul	:	1.7.2 (RC1), CSD as538be (2017)
Xtriage (Phenix)	:	1.9-1692
EDS	:	trunk28620
Percentile statistics	:	20161228.v01 (using entries in the PDB archive December 28th 2016)
Refmac	:	5.8.0135
CCP4	:	6.5.0
Ideal geometry (proteins)	:	Engh & Huber (2001)
Ideal geometry (DNA, RNA)	:	Parkinson et al. (1996)
Validation Pipeline (wwPDB-VP)	:	recalc28949

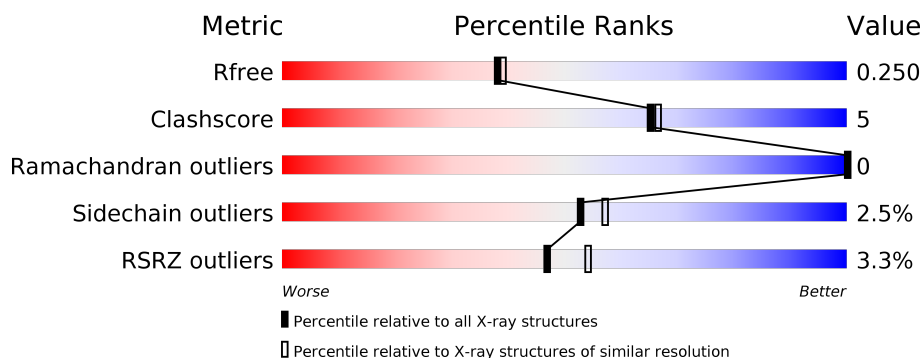
1 Overall quality at a glance

The following experimental techniques were used to determine the structure:

X-RAY DIFFRACTION

The reported resolution of this entry is 2.10 Å.

Percentile scores (ranging between 0-100) for global validation metrics of the entry are shown in the following graphic. The table shows the number of entries on which the scores are based.



Metric	Whole archive (#Entries)	Similar resolution (#Entries, resolution range(Å))
R_{free}	100719	4243 (2.10-2.10)
Clashscore	112137	4788 (2.10-2.10)
Ramachandran outliers	110173	4740 (2.10-2.10)
Sidechain outliers	110143	4741 (2.10-2.10)
RSRZ outliers	101464	4275 (2.10-2.10)

The table below summarises the geometric issues observed across the polymeric chains and their fit to the electron density. The red, orange, yellow and green segments on the lower bar indicate the fraction of residues that contain outliers for ≥ 3 , 2, 1 and 0 types of geometric quality criteria. A grey segment represents the fraction of residues that are not modelled. The numeric value for each fraction is indicated below the corresponding segment, with a dot representing fractions $\leq 5\%$. The upper red bar (where present) indicates the fraction of residues that have poor fit to the electron density. The numeric value is given above the bar.

Mol	Chain	Length	Quality of chain
1	A	337	<div> <div>2%</div> <div> <div></div> <div>84%</div> <div>11%</div> <div></div> </div> </div>
1	B	337	<div> <div>4%</div> <div> <div></div> <div>84%</div> <div>9%</div> <div>7%</div> </div> </div>

2 Entry composition

There are 3 unique types of molecules in this entry. The entry contains 10014 atoms, of which 4896 are hydrogens and 0 are deuteriums.

In the tables below, the ZeroOcc column contains the number of atoms modelled with zero occupancy, the AltConf column contains the number of residues with at least one atom in alternate conformation and the Trace column contains the number of residues modelled with at most 2 atoms.

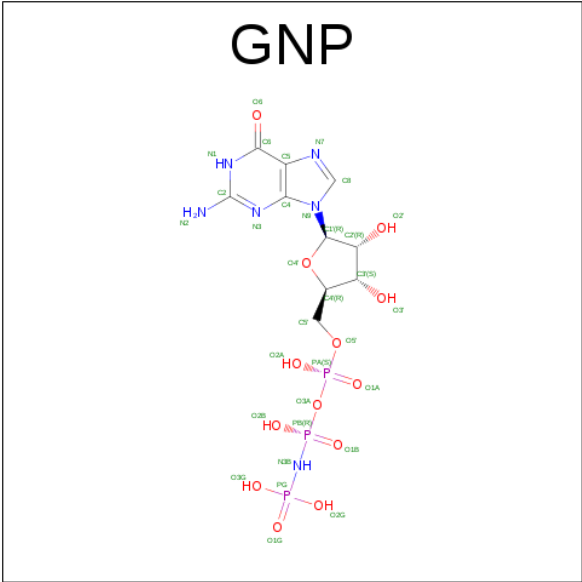
- Molecule 1 is a protein called Methylmalonyl-CoA mutase accessory protein.

Mol	Chain	Residues	Atoms						ZeroOcc	AltConf	Trace
1	A	323	Total	C	H	N	O	S	0	3	0
			4865	1489	2465	450	454	7			
1	B	315	Total	C	H	N	O	S	0	4	0
			4757	1459	2405	440	446	7			

There are 18 discrepancies between the modelled and reference sequences:

Chain	Residue	Modelled	Actual	Comment	Reference
A	192	PHE	LEU	ENGINEERED MUTATION	UNP C5AP93
A	330	LEU	-	EXPRESSION TAG	UNP C5AP93
A	331	GLU	-	EXPRESSION TAG	UNP C5AP93
A	332	HIS	-	EXPRESSION TAG	UNP C5AP93
A	333	HIS	-	EXPRESSION TAG	UNP C5AP93
A	334	HIS	-	EXPRESSION TAG	UNP C5AP93
A	335	HIS	-	EXPRESSION TAG	UNP C5AP93
A	336	HIS	-	EXPRESSION TAG	UNP C5AP93
A	337	HIS	-	EXPRESSION TAG	UNP C5AP93
B	192	PHE	LEU	ENGINEERED MUTATION	UNP C5AP93
B	330	LEU	-	EXPRESSION TAG	UNP C5AP93
B	331	GLU	-	EXPRESSION TAG	UNP C5AP93
B	332	HIS	-	EXPRESSION TAG	UNP C5AP93
B	333	HIS	-	EXPRESSION TAG	UNP C5AP93
B	334	HIS	-	EXPRESSION TAG	UNP C5AP93
B	335	HIS	-	EXPRESSION TAG	UNP C5AP93
B	336	HIS	-	EXPRESSION TAG	UNP C5AP93
B	337	HIS	-	EXPRESSION TAG	UNP C5AP93

- Molecule 2 is PHOSPHOAMINOPHOSPHONIC ACID-GUANYLATE ESTER (three-letter code: GNP) (formula: C₁₀H₁₇N₆O₁₃P₃).



Mol	Chain	Residues	Atoms						ZeroOcc	AltConf
2	A	1	Total	C	H	N	O	P	0	0
			45	10	13	6	13	3		
2	B	1	Total	C	H	N	O	P	0	0
			45	10	13	6	13	3		

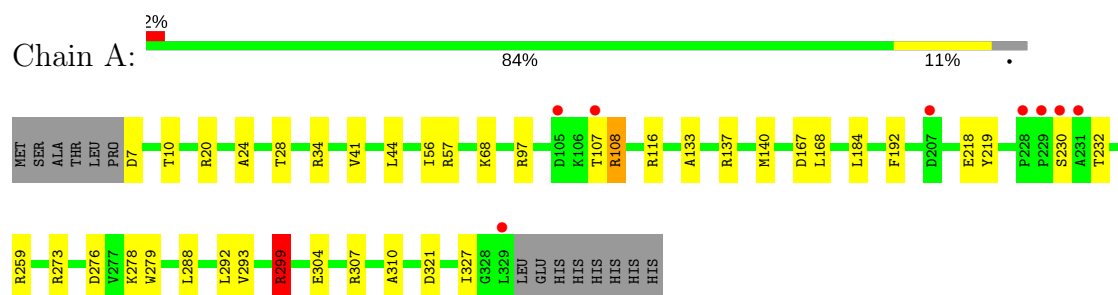
- Molecule 3 is water.

Mol	Chain	Residues	Atoms		ZeroOcc	AltConf
3	A	161	Total	O	0	0
			161	161		
3	B	141	Total	O	0	0
			141	141		

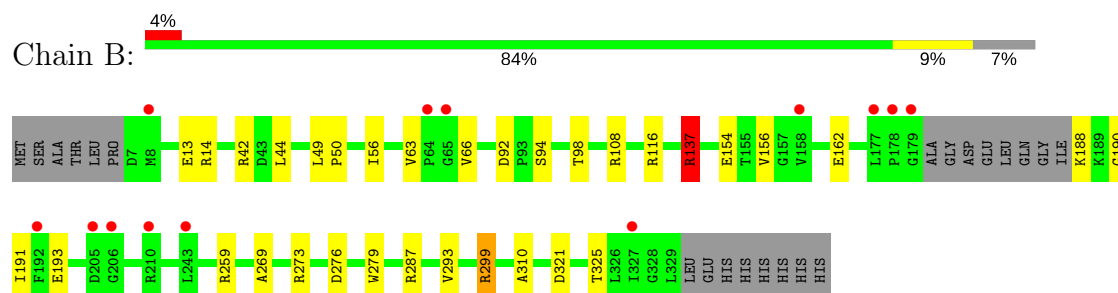
3 Residue-property plots [i](#)

These plots are drawn for all protein, RNA and DNA chains in the entry. The first graphic for a chain summarises the proportions of the various outlier classes displayed in the second graphic. The second graphic shows the sequence view annotated by issues in geometry and electron density. Residues are color-coded according to the number of geometric quality criteria for which they contain at least one outlier: green = 0, yellow = 1, orange = 2 and red = 3 or more. A red dot above a residue indicates a poor fit to the electron density ($RSRZ > 2$). Stretches of 2 or more consecutive residues without any outlier are shown as a green connector. Residues present in the sample, but not in the model, are shown in grey.

- Molecule 1: Methylmalonyl-CoA mutase accessory protein



- Molecule 1: Methylmalonyl-CoA mutase accessory protein



4 Data and refinement statistics

Property	Value	Source
Space group	C 1 2 1	Depositor
Cell constants a, b, c, α , β , γ	185.56Å 58.23Å 76.44Å 90.00° 106.30° 90.00°	Depositor
Resolution (Å)	44.54 – 2.10 44.53 – 2.10	Depositor EDS
% Data completeness (in resolution range)	99.2 (44.54-2.10) 99.2 (44.53-2.10)	Depositor EDS
R_{merge}	0.08	Depositor
R_{sym}	0.07	Depositor
$\langle I/\sigma(I) \rangle$ ¹	3.07 (at 2.10Å)	Xtriage
Refinement program	REFMAC 5.6.0117	Depositor
R, R_{free}	0.199 , 0.242 0.206 , 0.250	Depositor DCC
R_{free} test set	2286 reflections (5.27%)	DCC
Wilson B-factor (Å ²)	33.3	Xtriage
Anisotropy	0.573	Xtriage
Bulk solvent k_{sol} (e/Å ³), B_{sol} (Å ²)	0.39 , 43.0	EDS
L-test for twinning ²	$\langle L \rangle = 0.46$, $\langle L^2 \rangle = 0.28$	Xtriage
Estimated twinning fraction	No twinning to report.	Xtriage
F_o, F_c correlation	0.95	EDS
Total number of atoms	10014	wwPDB-VP
Average B, all atoms (Å ²)	42.0	wwPDB-VP

Xtriage's analysis on translational NCS is as follows: *The largest off-origin peak in the Patterson function is 6.92% of the height of the origin peak. No significant pseudotranslation is detected.*

¹Intensities estimated from amplitudes.

²Theoretical values of $\langle |L| \rangle$, $\langle L^2 \rangle$ for acentric reflections are 0.5, 0.333 respectively for untwinned datasets, and 0.375, 0.2 for perfectly twinned datasets.

5 Model quality [i](#)

5.1 Standard geometry [i](#)

Bond lengths and bond angles in the following residue types are not validated in this section: GNP

The Z score for a bond length (or angle) is the number of standard deviations the observed value is removed from the expected value. A bond length (or angle) with $|Z| > 5$ is considered an outlier worth inspection. RMSZ is the root-mean-square of all Z scores of the bond lengths (or angles).

Mol	Chain	Bond lengths		Bond angles	
		RMSZ	$\# Z > 5$	RMSZ	$\# Z > 5$
1	A	0.63	1/2441 (0.0%)	0.74	1/3305 (0.0%)
1	B	0.61	0/2395	0.73	1/3242 (0.0%)
All	All	0.62	1/4836 (0.0%)	0.73	2/6547 (0.0%)

All (1) bond length outliers are listed below:

Mol	Chain	Res	Type	Atoms	Z	Observed(Å)	Ideal(Å)
1	A	279	TRP	CD2-CE2	5.54	1.48	1.41

All (2) bond angle outliers are listed below:

Mol	Chain	Res	Type	Atoms	Z	Observed(°)	Ideal(°)
1	B	137	ARG	NE-CZ-NH1	6.91	123.76	120.30
1	A	299	ARG	NE-CZ-NH1	5.34	122.97	120.30

There are no chirality outliers.

There are no planarity outliers.

5.2 Too-close contacts [i](#)

In the following table, the Non-H and H(model) columns list the number of non-hydrogen atoms and hydrogen atoms in the chain respectively. The H(added) column lists the number of hydrogen atoms added and optimized by MolProbity. The Clashes column lists the number of clashes within the asymmetric unit, whereas Symm-Clashes lists symmetry related clashes.

Mol	Chain	Non-H	H(model)	H(added)	Clashes	Symm-Clashes
1	A	2400	2465	2465	25	0
1	B	2352	2405	2412	26	0
2	A	32	13	13	0	0

Continued on next page...

Continued from previous page...

Mol	Chain	Non-H	H(model)	H(added)	Clashes	Symm-Clashes
2	B	32	13	13	1	0
3	A	161	0	0	3	0
3	B	141	0	0	5	0
All	All	5118	4896	4903	46	0

The all-atom clashscore is defined as the number of clashes found per 1000 atoms (including hydrogen atoms). The all-atom clashscore for this structure is 5.

All (46) close contacts within the same asymmetric unit are listed below, sorted by their clash magnitude.

Atom-1	Atom-2	Interatomic distance (Å)	Clash overlap (Å)
1:B:269:ALA:O	1:B:273:ARG:HG2	1.85	0.76
1:A:288:LEU:HD11	1:A:327:ILE:HD13	1.71	0.72
1:A:137:ARG:NH1	1:A:276:ASP:OD1	2.25	0.69
1:B:321:ASP:O	1:B:325:THR:HG23	1.95	0.66
1:A:292:LEU:HD21	1:A:327:ILE:CG1	2.26	0.65
1:A:293:VAL:O	1:A:293:VAL:HG12	1.96	0.65
1:A:292:LEU:HD21	1:A:327:ILE:HG13	1.79	0.63
1:B:116[B]:ARG:NH1	3:B:578:HOH:O	2.33	0.62
1:A:310:ALA:O	1:B:273:ARG:HD3	2.02	0.60
1:B:190:GLY:N	3:B:595:HOH:O	2.32	0.58
1:B:162:GLU:HG2	1:B:191:ILE:HD12	1.87	0.57
1:B:92:ASP:HB2	1:B:156:VAL:HG23	1.87	0.57
1:A:273:ARG:HD3	1:B:310:ALA:O	2.08	0.54
1:A:7:ASP:N	3:A:618:HOH:O	2.43	0.52
1:A:293:VAL:HG13	1:A:299:ARG:HE	1.76	0.50
1:A:24:ALA:O	1:A:28:THR:HG23	2.13	0.49
1:A:292:LEU:HD11	1:A:327:ILE:HD11	1.93	0.49
1:A:321:ASP:OD1	1:B:287:ARG:NH2	2.45	0.49
1:B:13[A]:GLU:CD	3:B:622:HOH:O	2.50	0.49
1:B:66:VAL:O	2:B:401:GNP:O1B	2.31	0.49
1:A:56:ILE:HG12	1:A:259:ARG:HD2	1.96	0.47
1:B:92:ASP:HB2	1:B:156:VAL:CG2	2.44	0.47
1:A:167:ASP:OD2	1:A:278[A]:LYS:HE3	2.15	0.47
1:A:108:ARG:NH2	3:A:652:HOH:O	2.47	0.47
1:B:94:SER:O	1:B:98:THR:HG23	2.16	0.46
1:B:49:LEU:N	1:B:50:PRO:CD	2.79	0.46
1:A:57:ARG:HD3	1:A:140:MET:HE1	1.97	0.46
1:B:108:ARG:NH1	1:B:154:GLU:OE2	2.49	0.46
1:A:273:ARG:CD	1:B:310:ALA:O	2.64	0.46
1:B:14:ARG:NH2	3:B:572:HOH:O	2.48	0.45

Continued on next page...

Continued from previous page...

Atom-1	Atom-2	Interatomic distance (Å)	Clash overlap (Å)
1:B:42:ARG:HD3	1:B:42:ARG:HA	1.64	0.45
1:B:188:LYS:O	1:B:191:ILE:HG12	2.16	0.45
1:B:137:ARG:NH1	1:B:276:ASP:OD1	2.45	0.45
1:A:184:LEU:HD11	1:A:219:TYR:CZ	2.52	0.45
1:B:293:VAL:HG12	1:B:299:ARG:HG3	1.97	0.45
1:B:56:ILE:HG12	1:B:259[A]:ARG:HD2	1.98	0.45
1:A:34:ARG:NH2	3:A:622:HOH:O	2.50	0.44
1:A:20[B]:ARG:NH2	1:A:116:ARG:O	2.41	0.44
1:A:44:LEU:HD23	1:A:44:LEU:C	2.38	0.44
1:A:304:GLU:HG2	1:A:307[A]:ARG:HH21	1.82	0.44
1:A:133:ALA:O	1:A:168:LEU:HD21	2.19	0.43
1:A:192:PHE:HB3	1:B:193:GLU:CD	2.39	0.42
1:B:42:ARG:NH2	3:B:635:HOH:O	2.52	0.42
1:B:44:LEU:C	1:B:44:LEU:HD23	2.40	0.41
1:A:41:VAL:O	1:A:41:VAL:HG22	2.21	0.41
1:B:279:TRP:HA	1:B:279:TRP:CE3	2.57	0.40

There are no symmetry-related clashes.

5.3 Torsion angles ⓘ

5.3.1 Protein backbone ⓘ

In the following table, the Percentiles column shows the percent Ramachandran outliers of the chain as a percentile score with respect to all X-ray entries followed by that with respect to entries of similar resolution.

The Analysed column shows the number of residues for which the backbone conformation was analysed, and the total number of residues.

Mol	Chain	Analysed	Favoured	Allowed	Outliers	Percentiles	
1	A	324/337 (96%)	322 (99%)	2 (1%)	0	100	100
1	B	315/337 (94%)	306 (97%)	9 (3%)	0	100	100
All	All	639/674 (95%)	628 (98%)	11 (2%)	0	100	100

There are no Ramachandran outliers to report.

5.3.2 Protein sidechains [i](#)

In the following table, the Percentiles column shows the percent sidechain outliers of the chain as a percentile score with respect to all X-ray entries followed by that with respect to entries of similar resolution.

The Analysed column shows the number of residues for which the sidechain conformation was analysed, and the total number of residues.

Mol	Chain	Analysed	Rotameric	Outliers	Percentiles	
1	A	243/253 (96%)	234 (96%)	9 (4%)	39	39
1	B	239/253 (94%)	236 (99%)	3 (1%)	73	80
All	All	482/506 (95%)	470 (98%)	12 (2%)	53	57

All (12) residues with a non-rotameric sidechain are listed below:

Mol	Chain	Res	Type
1	A	10	THR
1	A	68	LYS
1	A	97	ARG
1	A	107	THR
1	A	108	ARG
1	A	218	GLU
1	A	230	SER
1	A	232	THR
1	A	299	ARG
1	B	63	VAL
1	B	137	ARG
1	B	299	ARG

Some sidechains can be flipped to improve hydrogen bonding and reduce clashes. There are no such sidechains identified.

5.3.3 RNA [i](#)

There are no RNA molecules in this entry.

5.4 Non-standard residues in protein, DNA, RNA chains [i](#)

There are no non-standard protein/DNA/RNA residues in this entry.

5.5 Carbohydrates [i](#)

There are no carbohydrates in this entry.

5.6 Ligand geometry [i](#)

2 ligands are modelled in this entry.

In the following table, the Counts columns list the number of bonds (or angles) for which Mogul statistics could be retrieved, the number of bonds (or angles) that are observed in the model and the number of bonds (or angles) that are defined in the chemical component dictionary. The Link column lists molecule types, if any, to which the group is linked. The Z score for a bond length (or angle) is the number of standard deviations the observed value is removed from the expected value. A bond length (or angle) with $|Z| > 2$ is considered an outlier worth inspection. RMSZ is the root-mean-square of all Z scores of the bond lengths (or angles).

Mol	Type	Chain	Res	Link	Bond lengths			Bond angles		
					Counts	RMSZ	$\# Z > 2$	Counts	RMSZ	$\# Z > 2$
2	GNP	A	401	-	29,34,34	1.95	8 (27%)	27,54,54	1.88	8 (29%)
2	GNP	B	401	-	29,34,34	2.03	9 (31%)	27,54,54	1.71	5 (18%)

In the following table, the Chirals column lists the number of chiral outliers, the number of chiral centers analysed, the number of these observed in the model and the number defined in the chemical component dictionary. Similar counts are reported in the Torsion and Rings columns. '-' means no outliers of that kind were identified.

Mol	Type	Chain	Res	Link	Chirals	Torsions	Rings
2	GNP	A	401	-	-	0/13/38/38	0/3/3/3
2	GNP	B	401	-	-	1/13/38/38	0/3/3/3

All (17) bond length outliers are listed below:

Mol	Chain	Res	Type	Atoms	Z	Observed(Å)	Ideal(Å)
2	A	401	GNP	PG-O3G	2.03	1.62	1.56
2	A	401	GNP	PB-O3A	2.06	1.61	1.59
2	B	401	GNP	PG-O3G	2.08	1.62	1.56
2	A	401	GNP	PG-O1G	2.17	1.48	1.46
2	B	401	GNP	PB-O1B	2.17	1.48	1.46
2	B	401	GNP	PG-O2G	2.37	1.63	1.56
2	B	401	GNP	C2-N2	2.44	1.35	1.32
2	A	401	GNP	PB-O1B	2.61	1.49	1.46
2	A	401	GNP	C5-C4	2.86	1.47	1.40
2	B	401	GNP	C5-C4	3.09	1.47	1.40
2	B	401	GNP	PG-O1G	3.40	1.50	1.46

Continued on next page...

Continued from previous page...

Mol	Chain	Res	Type	Atoms	Z	Observed(Å)	Ideal(Å)
2	A	401	GNP	C6-C5	3.67	1.47	1.41
2	B	401	GNP	C6-C5	4.21	1.48	1.41
2	A	401	GNP	PB-N3B	4.21	1.74	1.63
2	B	401	GNP	PB-N3B	4.24	1.74	1.63
2	B	401	GNP	PG-N3B	4.80	1.76	1.63
2	A	401	GNP	PG-N3B	5.54	1.78	1.63

All (13) bond angle outliers are listed below:

Mol	Chain	Res	Type	Atoms	Z	Observed(°)	Ideal(°)
2	A	401	GNP	N2-C2-N3	-3.95	115.42	120.26
2	B	401	GNP	C4-C5-N7	-3.46	106.06	109.41
2	A	401	GNP	C4-C5-N7	-3.42	106.11	109.41
2	B	401	GNP	O1G-PG-N3B	-2.92	107.42	111.79
2	A	401	GNP	O1G-PG-N3B	-2.91	107.44	111.79
2	A	401	GNP	C1'-N9-C4	-2.89	121.64	126.64
2	B	401	GNP	PA-O3A-PB	-2.81	122.45	132.38
2	A	401	GNP	O1B-PB-N3B	-2.62	107.88	111.79
2	A	401	GNP	O2G-PG-O1G	-2.07	108.14	113.41
2	B	401	GNP	N2-C2-N3	-2.03	117.77	120.26
2	A	401	GNP	N2-C2-N1	3.03	121.07	117.84
2	A	401	GNP	C2-N3-C4	3.91	119.73	115.16
2	B	401	GNP	C2-N3-C4	4.76	120.71	115.16

There are no chirality outliers.

All (1) torsion outliers are listed below:

Mol	Chain	Res	Type	Atoms
2	B	401	GNP	O1B-PB-N3B-PG

There are no ring outliers.

1 monomer is involved in 1 short contact:

Mol	Chain	Res	Type	Clashes	Symm-Clashes
2	B	401	GNP	1	0

5.7 Other polymers

There are no such residues in this entry.

5.8 Polymer linkage issues ⓘ

There are no chain breaks in this entry.

6 Fit of model and data

6.1 Protein, DNA and RNA chains

In the following table, the column labelled ‘#RSRZ> 2’ contains the number (and percentage) of RSRZ outliers, followed by percent RSRZ outliers for the chain as percentile scores relative to all X-ray entries and entries of similar resolution. The OWAB column contains the minimum, median, 95th percentile and maximum values of the occupancy-weighted average B-factor per residue. The column labelled ‘Q< 0.9’ lists the number of (and percentage) of residues with an average occupancy less than 0.9.

Mol	Chain	Analysed	<RSRZ>	#RSRZ>2	OWAB(Å ²)	Q<0.9
1	A	323/337 (95%)	0.11	8 (2%) 58 63	25, 39, 65, 88	0
1	B	315/337 (93%)	0.06	13 (4%) 38 45	24, 40, 64, 94	2 (0%)
All	All	638/674 (94%)	0.08	21 (3%) 47 54	24, 40, 65, 94	2 (0%)

All (21) RSRZ outliers are listed below:

Mol	Chain	Res	Type	RSRZ
1	B	206	GLY	4.5
1	A	229	PRO	4.4
1	A	329	LEU	3.8
1	B	205	ASP	3.6
1	B	158	VAL	3.3
1	B	179	GLY	3.1
1	B	8	MET	3.1
1	A	231	ALA	2.8
1	A	207	ASP	2.8
1	A	230	SER	2.8
1	A	107	THR	2.7
1	B	192	PHE	2.7
1	B	65	GLY	2.7
1	B	243	LEU	2.4
1	B	178	PRO	2.4
1	B	210	ARG	2.2
1	B	64	PRO	2.2
1	B	327	ILE	2.1
1	B	177	LEU	2.1
1	A	105	ASP	2.0
1	A	228	PRO	2.0

6.2 Non-standard residues in protein, DNA, RNA chains [i](#)

There are no non-standard protein/DNA/RNA residues in this entry.

6.3 Carbohydrates [i](#)

There are no carbohydrates in this entry.

6.4 Ligands [i](#)

In the following table, the Atoms column lists the number of modelled atoms in the group and the number defined in the chemical component dictionary. LLDF column lists the quality of electron density of the group with respect to its neighbouring residues in protein, DNA or RNA chains. The B-factors column lists the minimum, median, 95th percentile and maximum values of B factors of atoms in the group. The column labelled 'Q< 0.9' lists the number of atoms with occupancy less than 0.9.

Mol	Type	Chain	Res	Atoms	RSCC	RSR	LLDF	B-factors(\AA^2)	Q<0.9
2	GNP	B	401	32/32	0.90	0.17	-0.15	55,63,77,90	0
2	GNP	A	401	32/32	0.95	0.11	-0.16	38,43,58,63	0

6.5 Other polymers [i](#)

There are no such residues in this entry.