



Full wwPDB X-ray Structure Validation Report ⓘ

Feb 15, 2017 – 04:52 am GMT

PDB ID : 3JZM
Title : Crystal structure of the phosphorylation-site mutant T432A of the KaiC circadian clock protein
Authors : Pattanayek, R.; Egli, M.; Pattanayek, S.
Deposited on : 2009-09-23
Resolution : 2.90 Å(reported)

This is a Full wwPDB X-ray Structure Validation Report for a publicly released PDB entry.

We welcome your comments at validation@mail.wwpdb.org

A user guide is available at

<http://wwpdb.org/validation/2016/XrayValidationReportHelp>

with specific help available everywhere you see the ⓘ symbol.

The following versions of software and data (see [references ⓘ](#)) were used in the production of this report:

MolProbity : 4.02b-467
Mogul : 1.7.2 (RC1), CSD as538be (2017)
Xtriage (Phenix) : 1.9-1692
EDS : trunk28620
Percentile statistics : 20161228.v01 (using entries in the PDB archive December 28th 2016)
Refmac : 5.8.0135
CCP4 : 6.5.0
Ideal geometry (proteins) : Engh & Huber (2001)
Ideal geometry (DNA, RNA) : Parkinson et al. (1996)
Validation Pipeline (wwPDB-VP) : recalc28949

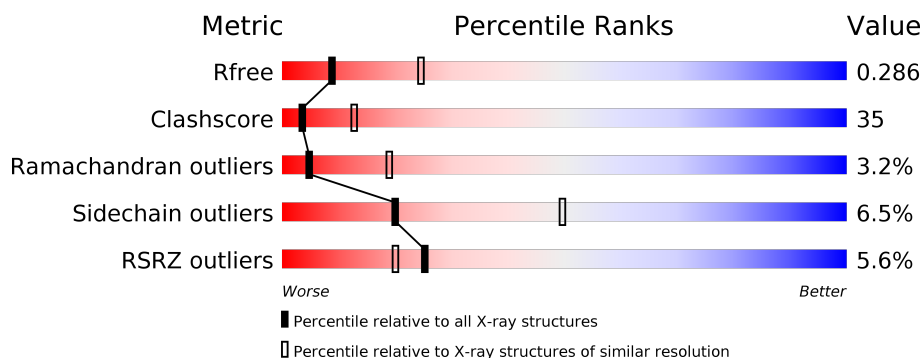
1 Overall quality at a glance

The following experimental techniques were used to determine the structure:

X-RAY DIFFRACTION

The reported resolution of this entry is 2.90 Å.

Percentile scores (ranging between 0-100) for global validation metrics of the entry are shown in the following graphic. The table shows the number of entries on which the scores are based.



Metric	Whole archive (#Entries)	Similar resolution (#Entries, resolution range(Å))
R_{free}	100719	1586 (2.90-2.90)
Clashscore	112137	1807 (2.90-2.90)
Ramachandran outliers	110173	1768 (2.90-2.90)
Sidechain outliers	110143	1770 (2.90-2.90)
RSRZ outliers	101464	1596 (2.90-2.90)

The table below summarises the geometric issues observed across the polymeric chains and their fit to the electron density. The red, orange, yellow and green segments on the lower bar indicate the fraction of residues that contain outliers for ≥ 3 , 2, 1 and 0 types of geometric quality criteria. A grey segment represents the fraction of residues that are not modelled. The numeric value for each fraction is indicated below the corresponding segment, with a dot representing fractions $\leq 5\%$. The upper red bar (where present) indicates the fraction of residues that have poor fit to the electron density. The numeric value is given above the bar.

Mol	Chain	Length	Quality of chain
1	A	519	<div> <div>6%</div> <div> <div>45%</div> <div>43%</div> <div>5%</div> <div>7%</div> </div> </div>
1	B	519	<div> <div>7%</div> <div> <div>44%</div> <div>45%</div> <div>•</div> <div>7%</div> </div> </div>
1	C	519	<div> <div>6%</div> <div> <div>42%</div> <div>45%</div> <div>6%</div> <div>7%</div> </div> </div>
1	D	519	<div> <div>3%</div> <div> <div>47%</div> <div>40%</div> <div>6%</div> <div>•</div> <div>7%</div> </div> </div>
1	E	519	<div> <div>5%</div> <div> <div>41%</div> <div>47%</div> <div>6%</div> <div>7%</div> </div> </div>
1	F	519	<div> <div>5%</div> <div> <div>39%</div> <div>47%</div> <div>7%</div> <div>7%</div> </div> </div>

The following table lists non-polymeric compounds, carbohydrate monomers and non-standard residues in protein, DNA, RNA chains that are outliers for geometric or electron-density-fit criteria:

Mol	Type	Chain	Res	Chirality	Geometry	Clashes	Electron density
3	MG	B	527	-	-	-	X
3	MG	B	701	-	-	-	X
3	MG	D	701	-	-	-	X
3	MG	E	701	-	-	-	X
3	MG	F	702	-	-	-	X
3	MG	F	801	-	-	-	X

2 Entry composition

There are 4 unique types of molecules in this entry. The entry contains 23355 atoms, of which 0 are hydrogens and 0 are deuteriums.

In the tables below, the ZeroOcc column contains the number of atoms modelled with zero occupancy, the AltConf column contains the number of residues with at least one atom in alternate conformation and the Trace column contains the number of residues modelled with at most 2 atoms.

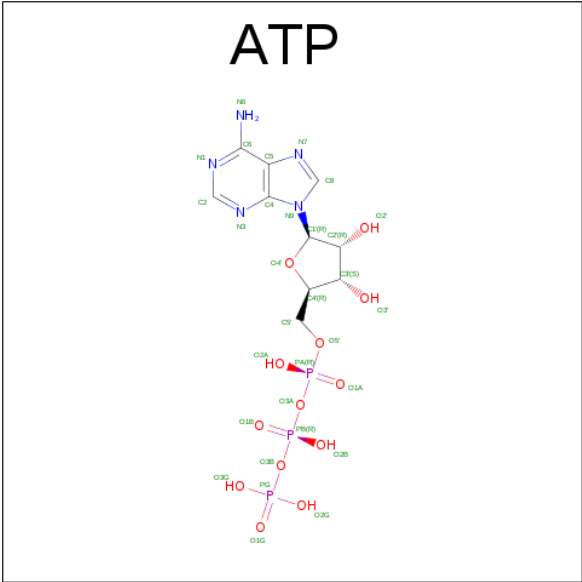
- Molecule 1 is a protein called Circadian clock protein kinase kaiC.

Mol	Chain	Residues	Atoms						ZeroOcc	AltConf	Trace
1	A	484	Total	C	N	O	P	S	0	0	0
			3817	2406	670	725	1	15			
1	B	484	Total	C	N	O	P	S	0	0	0
			3817	2406	670	725	1	15			
1	C	484	Total	C	N	O	P	S	0	0	0
			3817	2406	670	725	1	15			
1	D	484	Total	C	N	O	P	S	0	0	0
			3817	2406	670	725	1	15			
1	E	484	Total	C	N	O	P	S	0	0	0
			3817	2406	670	725	1	15			
1	F	484	Total	C	N	O	P	S	0	0	0
			3817	2406	670	725	1	15			

There are 6 discrepancies between the modelled and reference sequences:

Chain	Residue	Modelled	Actual	Comment	Reference
A	432	ALA	THR	ENGINEERED	UNP Q79PF4
B	432	ALA	THR	ENGINEERED	UNP Q79PF4
C	432	ALA	THR	ENGINEERED	UNP Q79PF4
D	432	ALA	THR	ENGINEERED	UNP Q79PF4
E	432	ALA	THR	ENGINEERED	UNP Q79PF4
F	432	ALA	THR	ENGINEERED	UNP Q79PF4

- Molecule 2 is ADENOSINE-5'-TRIPHOSPHATE (three-letter code: ATP) (formula: $C_{10}H_{16}N_5O_{13}P_3$).



Mol	Chain	Residues	Atoms					ZeroOcc	AltConf
2	A	1	Total	C	N	O	P	0	0
			31	10	5	13	3		
2	A	1	Total	C	N	O	P	0	0
			31	10	5	13	3		
2	B	1	Total	C	N	O	P	0	0
			31	10	5	13	3		
2	B	1	Total	C	N	O	P	0	0
			31	10	5	13	3		
2	C	1	Total	C	N	O	P	0	0
			31	10	5	13	3		
2	C	1	Total	C	N	O	P	0	0
			31	10	5	13	3		
2	D	1	Total	C	N	O	P	0	0
			31	10	5	13	3		
2	D	1	Total	C	N	O	P	0	0
			31	10	5	13	3		
2	E	1	Total	C	N	O	P	0	0
			31	10	5	13	3		
2	E	1	Total	C	N	O	P	0	0
			31	10	5	13	3		
2	F	1	Total	C	N	O	P	0	0
			31	10	5	13	3		
2	F	1	Total	C	N	O	P	0	0
			31	10	5	13	3		

- Molecule 3 is MAGNESIUM ION (three-letter code: MG) (formula: Mg).

Mol	Chain	Residues	Atoms	ZeroOcc	AltConf
3	D	3	Total 3 Mg 3	0	0
3	E	3	Total 3 Mg 3	0	0
3	B	3	Total 3 Mg 3	0	0
3	C	2	Total 2 Mg 2	0	0
3	A	3	Total 3 Mg 3	0	0
3	F	4	Total 4 Mg 4	0	0

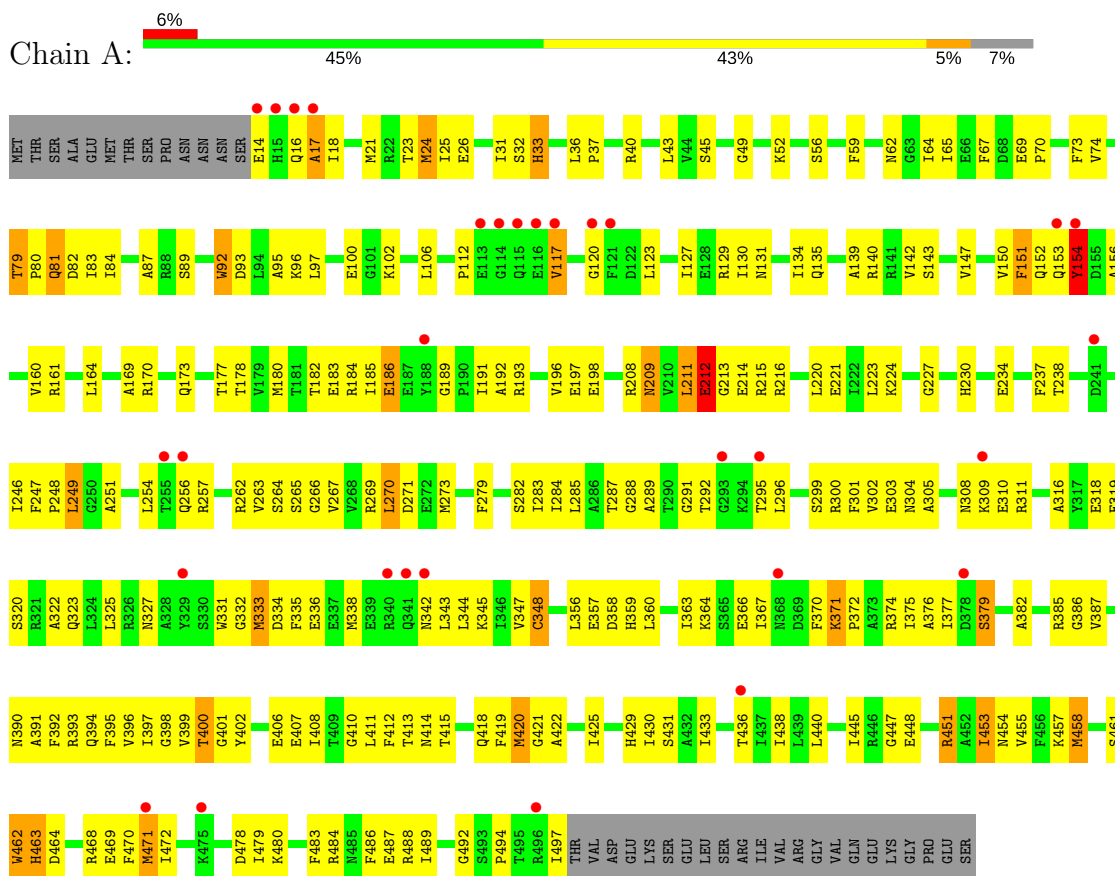
- Molecule 4 is water.

Mol	Chain	Residues	Atoms	ZeroOcc	AltConf
4	A	7	Total 7 O 7	0	0
4	B	5	Total 5 O 5	0	0
4	C	7	Total 7 O 7	0	0
4	D	12	Total 12 O 12	0	0
4	E	13	Total 13 O 13	0	0
4	F	19	Total 19 O 19	0	0

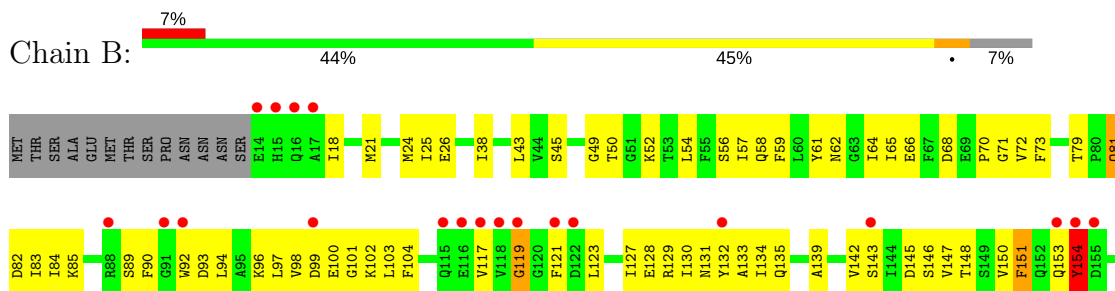
3 Residue-property plots

These plots are drawn for all protein, RNA and DNA chains in the entry. The first graphic for a chain summarises the proportions of the various outlier classes displayed in the second graphic. The second graphic shows the sequence view annotated by issues in geometry and electron density. Residues are color-coded according to the number of geometric quality criteria for which they contain at least one outlier: green = 0, yellow = 1, orange = 2 and red = 3 or more. A red dot above a residue indicates a poor fit to the electron density ($RSRZ > 2$). Stretches of 2 or more consecutive residues without any outlier are shown as a green connector. Residues present in the sample, but not in the model, are shown in grey.

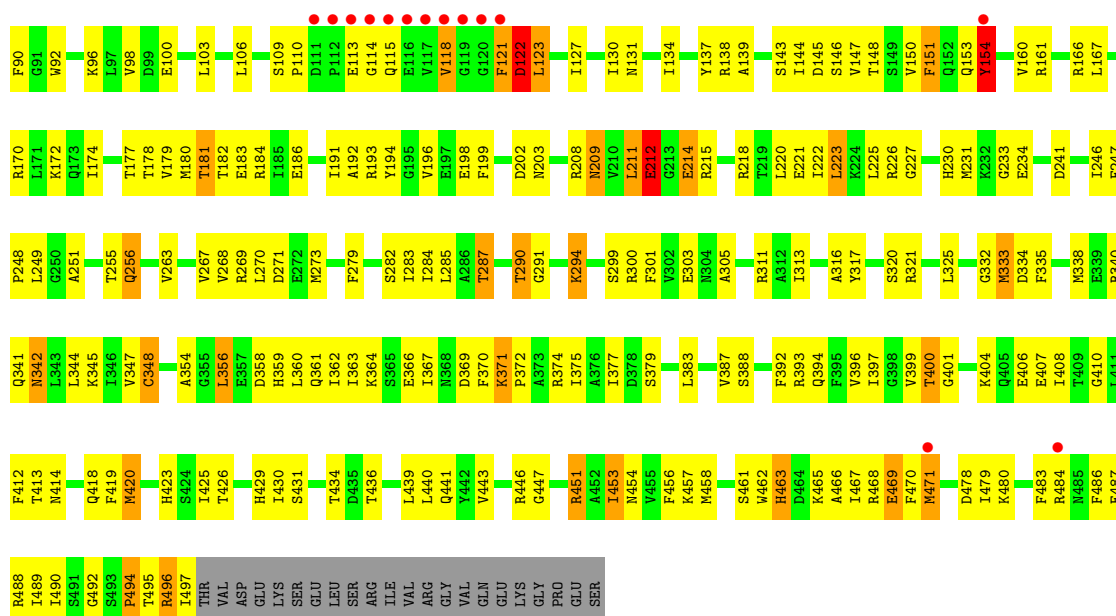
• Molecule 1: Circadian clock protein kinase kaiC



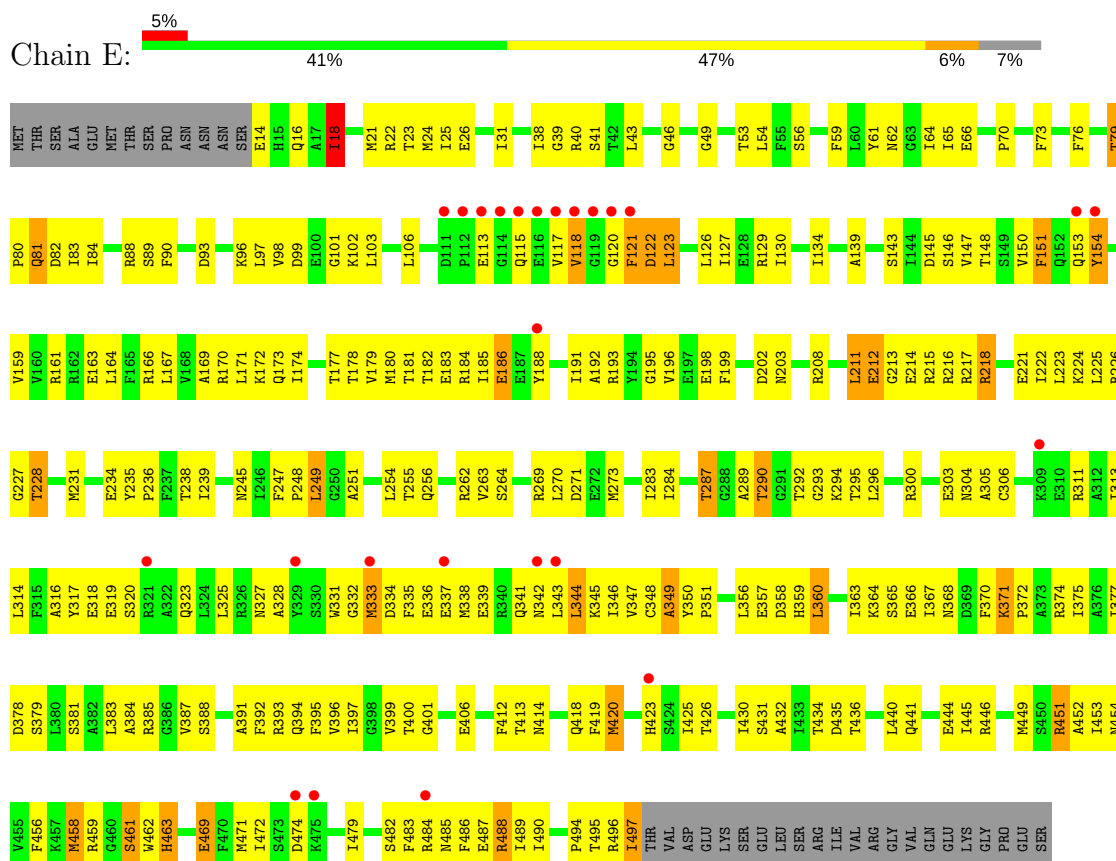
• Molecule 1: Circadian clock protein kinase kaiC



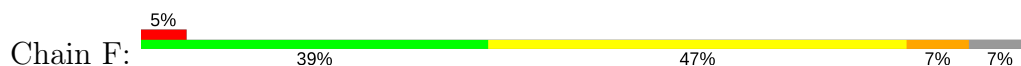




• Molecule 1: Circadian clock protein kinase kaiC



• Molecule 1: Circadian clock protein kinase kaiC



ILE VAL ARG GLY VAL GLN GLU GLU LYS GLY LYS PRO GLU SER	I433	I434	T436	T436	I437	I438	I439	I440	Q441	V442	V443	E444	I445	R451	A452	I453	M454	V455	F456	R457	M458	R459	S461	M462	H463	I467	R468	E469	F470	M471	D478	I479	F483	R484	F486	E487	R488	I489	I490	P494	T495	R496	I497	THR	VAL	ASP	GLU	LYS	SER	GLU	LEU	SER	ARG
	H359	L360	Q361	I362	I363	I367	F370	K371	S372	A373	R374	I375	I376	I377	D378	S379	L380	S381	A382	L383	A384	R385	G386	V387	S388	A391	F392	R393	Q394	F395	V396	I397	G398	V399	T400	K404	G410	L411	F412	T413	M414	Q418	F419	M420	H423	S424	I425	T426	H429	I430	S431	A432	
	H359	L360	Q361	I362	I363		F370	K371	S372	A373	R374	I375	I376	I377	D378	S379	L380	S381	A382	L383	A384	R385	G386	V387	S388	A391	F392	R393	Q394	F395	V396	I397	G398	V399	T400	K404	G410	L411	F412	T413	M414	Q418	F419	M420	H423	S424	I425	T426	H429	I430	S431	A432	
	T290	G291	T292	G293	K294	T295	L296	L297	V298	S299	R300	F301	A306	C306	R311	A312	I313	A316	E319	S320	R321	A322	Q323	L324	L325	Y329	S330	W331	G332	M333	D334	F335	E336	F337	M338	E339	R340	M342	L343	K345	V347	C348	A349	P351	E352	S353	A354	G355	L356	E357	D358		
	T290	G291	T292	G293	K294	T295	L296	L297	V298	S299	R300	F301	A306	C306	R311	A312	I313	A316	E319	S320	R321	A322	Q323	L324	L325	Y329	S330	W331	G332	M333	D334	F335	E336	F337	M338	E339	R340	M342	L343	K345	V347	C348	A349	P351	E352	S353	A354	G355	L356	E357	D358		
	T290	G291	T292	G293	K294	T295	L296	L297	V298	S299	R300	F301	A306	C306	R311	A312	I313	A316	E319	S320	R321	A322	Q323	L324	L325	Y329	S330	W331	G332	M333	D334	F335	E336	F337	M338	E339	R340	M342	L343	K345	V347	C348	A349	P351	E352	S353	A354	G355	L356	E357	D358		
	T290	G291	T292	G293	K294	T295	L296	L297	V298	S299	R300	F301	A306	C306	R311	A312	I313	A316	E319	S320	R321	A322	Q323	L324	L325	Y329	S330	W331	G332	M333	D334	F335	E336	F337	M338	E339	R340	M342	L343	K345	V347	C348	A349	P351	E352	S353	A354	G355	L356	E357	D358		
	T290	G291	T292	G293	K294	T295	L296	L297	V298	S299	R300	F301	A306	C306	R311	A312	I313	A316	E319	S320	R321	A322	Q323	L324	L325	Y329	S330	W331	G332	M333	D334	F335	E336	F337	M338	E339	R340	M342	L343	K345	V347	C348	A349	P351	E352	S353	A354	G355	L356	E357	D358		
	T290	G291	T292	G293	K294	T295	L296	L297	V298	S299	R300	F301	A306	C306	R311	A312	I313	A316	E319	S320	R321	A322	Q323	L324	L325	Y329	S330	W331	G332	M333	D334	F335	E336	F337	M338	E339	R340	M342	L343	K345	V347	C348	A349	P351	E352	S353	A354	G355	L356	E357	D358		
	T290	G291	T292	G293	K294	T295	L296	L297	V298	S299	R300	F301	A306	C306	R311	A312	I313	A316	E319	S320	R321	A322	Q323	L324	L325	Y329	S330	W331	G332	M333	D334	F335	E336	F337	M338	E339	R340	M342	L343	K345	V347	C348	A349	P351	E352	S353	A354	G355	L356	E357	D358		
	T290	G291	T292	G293	K294	T295	L296	L297	V298	S299	R300	F301	A306	C306	R311	A312	I313	A316	E319	S320	R321	A322	Q323	L324	L325	Y329	S330	W331	G332	M333	D334	F335	E336	F337	M338	E339	R340	M342	L343	K345	V347	C348	A349	P351	E352	S353	A354	G355	L356	E357	D358		

MET THR SER ALA GLU MET THR SER PRO ASN ASN ASN SER E14 H15 Q16 I17 I18 M21 R22 T23 M24 G27 T31 S32 H33 G34 G35 T42 S45 S48 Q49 K52 T53 L54 F55 S56 F59 L60 Y61 L65 E66 F67 D68 E69 P70 F73 V74 T75	T79	F80	Q81	D82	V150	I83	I84	Q152	R88	S89	F90	G91	W92	D93	L94	A95	K96	L97	V98	D99	E100	L103	L106	D111	F112	E113	G114	Q115	E116	V117	T118	M180	T181	T182	E183	R184	I185	D121	D122	L123	S124	A125	L126	I127	E128	R129	T130	M131	Y132	A133	I134	Q135	K136	Y137	R138	V210	A139	L211	R140	E141	V142	S143	I144	D145
	T79	F80	Q81	D82	V150	I83	I84	Q152	R88	S89	F90	G91	W92	D93	L94	A95	K96	L97	V98	D99	E100	L103	L106	D111	F112	E113	G114	Q115	E116	V117	T118	M180	T181	T182	E183	R184	I185	D121	D122	L123	S124	A125	L126	I127	E128	R129	T130	M131	Y132	A133	I134	Q135	K136	Y137	R138	V210	A139	L211	R140	E141	V142	S143	I144	D145
	T79	F80	Q81	D82	V150	I83	I84	Q152	R88	S89	F90	G91	W92	D93	L94	A95	K96	L97	V98	D99	E100	L103	L106	D111	F112	E113	G114	Q115	E116	V117	T118	M180	T181	T182	E183	R184	I185	D121	D122	L123	S124	A125	L126	I127	E128	R129	T130	M131	Y132	A133	I134	Q135	K136	Y137	R138	V210	A139	L211	R140	E141	V142	S143	I144	D145
	T79	F80	Q81	D82	V150	I83	I84	Q152	R88	S89	F90	G91	W92	D93	L94	A95	K96	L97	V98	D99	E100	L103	L106	D111	F112	E113	G114	Q115	E116	V117	T118	M180	T181	T182	E183	R184	I185	D121	D122	L123	S124	A125	L126	I127	E128	R129	T130	M131	Y132	A133	I134	Q135	K136	Y137	R138	V210	A139	L211	R140	E141	V142	S143	I144	D145
	T79	F80	Q81	D82	V150	I83	I84	Q152	R88	S89	F90	G91	W92	D93	L94	A95	K96	L97	V98	D99	E100	L103	L106	D111	F112	E113	G114	Q115	E116	V117	T118	M180	T181	T182	E183	R184	I185	D121	D122	L123	S124	A125	L126	I127	E128	R129	T130	M131	Y132	A133	I134	Q135	K136	Y137	R138	V210	A139	L211	R140	E141	V142	S143	I144	D145
	T79	F80	Q81	D82	V150	I83	I84	Q152	R88	S89	F90	G91	W92	D93	L94	A95	K96	L97	V98	D99	E100	L103	L106	D111	F112	E113	G114	Q115	E116	V117	T118	M180	T181	T182	E183	R184	I185	D121	D122	L123	S124	A125	L126	I127	E128	R129	T130	M131	Y132	A133	I134	Q135	K136	Y137	R138	V210	A139	L211	R140	E141	V142	S143	I144	D145
	T79	F80	Q81	D82	V150	I83	I84	Q152	R88	S89	F90	G91	W92	D93	L94	A95	K96	L97	V98	D99	E100	L103	L106	D111	F112	E113	G114	Q115	E116	V117	T118	M180	T181	T182	E183	R184	I185	D121	D122	L123	S124	A125	L126	I127	E128	R129	T130	M131	Y132	A133	I134	Q135	K136	Y137	R138	V210	A139	L211	R140	E141	V142	S143	I144	D145
	T79	F80	Q81	D82	V150	I83	I84	Q152	R88	S89	F90	G91	W92	D93	L94	A95	K96	L97	V98	D99	E100	L103	L106	D111	F112	E113	G114	Q115	E116	V117	T118	M180	T181	T182	E183	R184	I185	D121	D122	L123	S124	A125	L126	I127	E128	R129	T130	M131	Y132	A133	I134	Q135	K136	Y137	R138	V210	A139	L211	R140	E141	V142	S143	I144	D145
	T79	F80	Q81	D82	V150	I83	I84	Q152	R88	S89	F90	G91	W92	D93	L94	A95	K96	L97	V98	D99	E100	L103	L106	D111	F112	E113	G114	Q115	E116	V117	T118	M180	T181	T182	E183	R184	I185	D121	D122	L123	S124	A125	L126	I127	E128	R129	T130	M131	Y132	A133	I134	Q135	K136	Y137	R138	V210	A139	L211	R140	E141	V142	S143	I144	D145
	T79	F80	Q81	D82	V150	I83	I84	Q152	R88	S89	F90	G91	W92	D93	L94	A95	K96	L97	V98	D99	E100	L103	L106	D111	F112	E113	G114	Q115	E116	V117	T118	M180	T181	T182	E183	R184	I185	D121	D122	L123	S124	A125	L126	I127	E128	R129	T130	M131	Y132	A133	I134	Q135	K136	Y137	R138	V210	A139	L211	R140	E141	V142	S143	I144	D145
	T79	F80	Q81	D82	V150	I83	I84	Q152	R88	S89	F90	G91	W92	D93	L94	A95	K96	L97	V98	D99	E100	L103	L106	D111	F112	E113	G114	Q115	E116	V117	T118	M180	T181	T182	E183	R184	I185	D121	D122	L123	S124	A125	L126	I127	E128	R129	T130	M131	Y132	A133	I134	Q135	K136	Y137	R138	V210	A139	L211	R140	E141	V142	S143	I144	D145

4 Data and refinement statistics

Property	Value	Source
Space group	P 21 21 21	Depositor
Cell constants a, b, c, α , β , γ	132.37Å 135.11Å 204.50Å 90.00° 90.00° 90.00°	Depositor
Resolution (Å)	6.24 – 2.90 29.66 – 2.80	Depositor EDS
% Data completeness (in resolution range)	92.0 (6.24-2.90) 91.2 (29.66-2.80)	Depositor EDS
R_{merge}	0.07	Depositor
R_{sym}	(Not available)	Depositor
$\langle I/\sigma(I) \rangle$ ¹	3.16 (at 2.80Å)	Xtriage
Refinement program	CNS 1.1	Depositor
R, R_{free}	0.228 , 0.282 0.233 , 0.286	Depositor DCC
R_{free} test set	6717 reflections (9.95%)	DCC
Wilson B-factor (Å ²)	60.7	Xtriage
Anisotropy	0.334	Xtriage
Bulk solvent k_{sol} (e/Å ³), B_{sol} (Å ²)	0.33 , 62.6	EDS
L-test for twinning ²	$\langle L \rangle = 0.48$, $\langle L^2 \rangle = 0.31$	Xtriage
Estimated twinning fraction	0.018 for k,h,-l	Xtriage
F_o, F_c correlation	0.93	EDS
Total number of atoms	23355	wwPDB-VP
Average B, all atoms (Å ²)	68.0	wwPDB-VP

Xtriage's analysis on translational NCS is as follows: *The largest off-origin peak in the Patterson function is 2.77% of the height of the origin peak. No significant pseudotranslation is detected.*

¹Intensities estimated from amplitudes.

²Theoretical values of $\langle |L| \rangle$, $\langle L^2 \rangle$ for acentric reflections are 0.5, 0.333 respectively for untwinned datasets, and 0.375, 0.2 for perfectly twinned datasets.

5 Model quality [i](#)

5.1 Standard geometry [i](#)

Bond lengths and bond angles in the following residue types are not validated in this section: MG, ATP, SEP

The Z score for a bond length (or angle) is the number of standard deviations the observed value is removed from the expected value. A bond length (or angle) with $|Z| > 5$ is considered an outlier worth inspection. RMSZ is the root-mean-square of all Z scores of the bond lengths (or angles).

Mol	Chain	Bond lengths		Bond angles	
		RMSZ	$\# Z > 5$	RMSZ	$\# Z > 5$
1	A	0.40	0/3871	0.66	0/5215
1	B	0.38	0/3871	0.63	0/5215
1	C	0.42	0/3871	0.64	0/5215
1	D	0.47	0/3871	0.68	0/5215
1	E	0.47	0/3871	0.69	2/5215 (0.0%)
1	F	0.44	0/3871	0.67	0/5215
All	All	0.43	0/23226	0.66	2/31290 (0.0%)

There are no bond length outliers.

All (2) bond angle outliers are listed below:

Mol	Chain	Res	Type	Atoms	Z	Observed(°)	Ideal(°)
1	E	213	GLY	N-CA-C	-5.79	98.62	113.10
1	E	218	ARG	NE-CZ-NH2	-5.28	117.66	120.30

There are no chirality outliers.

There are no planarity outliers.

5.2 Too-close contacts [i](#)

In the following table, the Non-H and H(model) columns list the number of non-hydrogen atoms and hydrogen atoms in the chain respectively. The H(added) column lists the number of hydrogen atoms added and optimized by MolProbity. The Clashes column lists the number of clashes within the asymmetric unit, whereas Symm-Clashes lists symmetry related clashes.

Mol	Chain	Non-H	H(model)	H(added)	Clashes	Symm-Clashes
1	A	3817	0	3811	269	0
1	B	3817	0	3810	283	0
1	C	3817	0	3810	287	0

Continued on next page...

Continued from previous page...

Mol	Chain	Non-H	H(model)	H(added)	Clashes	Symm-Clashes
1	D	3817	0	3811	273	0
1	E	3817	0	3809	288	0
1	F	3817	0	3809	300	0
2	A	62	0	24	5	0
2	B	62	0	24	6	0
2	C	62	0	24	2	0
2	D	62	0	24	6	0
2	E	62	0	24	9	0
2	F	62	0	23	11	0
3	A	3	0	0	0	0
3	B	3	0	0	0	0
3	C	2	0	0	0	0
3	D	3	0	0	0	0
3	E	3	0	0	0	0
3	F	4	0	0	0	0
4	A	7	0	0	2	0
4	B	5	0	0	0	0
4	C	7	0	0	2	0
4	D	12	0	0	0	0
4	E	13	0	0	4	0
4	F	19	0	0	6	0
All	All	23355	0	23003	1609	0

The all-atom clashscore is defined as the number of clashes found per 1000 atoms (including hydrogen atoms). The all-atom clashscore for this structure is 35.

All (1609) close contacts within the same asymmetric unit are listed below, sorted by their clash magnitude.

Atom-1	Atom-2	Interatomic distance (Å)	Clash overlap (Å)
1:E:263:VAL:HG12	1:E:374:ARG:HH21	0.99	1.13
1:B:311:ARG:HD2	1:B:371:LYS:HD2	1.29	1.12
1:F:191:ILE:HD12	1:F:198:GLU:HG2	1.35	1.08
1:A:311:ARG:HD2	1:A:371:LYS:HD2	1.34	1.07
1:F:203:ASN:HB3	1:F:225:LEU:HD23	1.37	1.05
1:F:305:ALA:HB2	1:F:374:ARG:HD2	1.38	1.02
1:A:379:SER:H	1:A:413:THR:HB	1.19	1.01
1:F:263:VAL:HG12	1:F:374:ARG:HH21	1.23	1.00
1:A:320:SER:HA	1:B:254:LEU:HG	1.42	0.99
1:B:263:VAL:HG12	1:B:374:ARG:HH21	1.28	0.99
1:E:356:LEU:HD22	1:E:387:VAL:HG11	1.45	0.98
1:E:263:VAL:HG12	1:E:374:ARG:NH2	1.79	0.98

Continued on next page...

Continued from previous page...

Atom-1	Atom-2	Interatomic distance (Å)	Clash overlap (Å)
1:E:123:LEU:HD13	1:E:166:ARG:HD2	1.43	0.97
1:E:18:ILE:HD13	1:E:18:ILE:H	1.26	0.97
1:A:287:THR:HG23	1:A:414:ASN:HD22	1.28	0.96
1:A:311:ARG:HD2	1:A:371:LYS:CD	1.96	0.96
1:B:451:ARG:HG2	1:B:451:ARG:HH11	1.25	0.95
1:C:393:ARG:HH21	1:C:429:HIS:HB2	1.31	0.95
1:B:147:VAL:O	1:B:150:VAL:HG12	1.66	0.95
1:D:287:THR:HG23	1:D:414:ASN:HD22	1.31	0.95
1:B:305:ALA:HB2	1:B:374:ARG:HD2	1.50	0.93
1:B:262:ARG:HH22	1:B:461:SER:HB2	1.32	0.93
1:F:147:VAL:O	1:F:150:VAL:HG12	1.68	0.92
1:E:263:VAL:CG1	1:E:374:ARG:HH21	1.84	0.91
1:A:24:MET:HB2	1:A:62:ASN:HD22	1.34	0.90
1:C:344:LEU:HD22	1:C:345:LYS:H	1.36	0.90
1:C:263:VAL:HG12	1:C:374:ARG:HH21	1.35	0.90
1:F:311:ARG:HD2	1:F:371:LYS:HE2	1.53	0.89
1:C:147:VAL:O	1:C:150:VAL:HG12	1.71	0.89
1:D:147:VAL:HG11	1:D:180:MET:HE3	1.53	0.89
1:A:18:ILE:HD12	1:A:227:GLY:HA3	1.54	0.89
1:C:488:ARG:HH22	1:D:488:ARG:HH21	1.18	0.88
1:E:123:LEU:HD22	1:E:127:ILE:HD11	1.55	0.88
1:F:283:ILE:CD1	1:F:400:THR:HG23	2.04	0.88
1:E:311:ARG:HD2	1:E:371:LYS:HD2	1.56	0.88
1:C:287:THR:HG21	1:C:425:ILE:O	1.73	0.88
1:A:436:THR:HG23	1:A:458:MET:HG2	1.56	0.87
1:A:396:VAL:HG11	1:A:430:ILE:CG2	2.04	0.87
1:C:325:LEU:HD23	1:C:335:PHE:HB2	1.56	0.87
1:C:488:ARG:NH2	1:D:488:ARG:HH21	1.70	0.87
1:A:79:THR:CG2	1:A:81:GLN:HG2	2.04	0.87
1:D:191:ILE:HD12	1:D:198:GLU:HG2	1.56	0.87
1:E:18:ILE:N	1:E:18:ILE:HD13	1.89	0.87
1:C:469:GLU:HG3	1:C:480:LYS:HE3	1.53	0.86
1:E:93:ASP:OD2	1:E:96:LYS:HB2	1.74	0.86
1:B:393:ARG:HH21	1:B:429:HIS:HB2	1.39	0.86
1:C:287:THR:HG23	1:C:414:ASN:HD22	1.41	0.85
1:F:453:ILE:HD13	1:F:454:ASN:N	1.92	0.85
1:B:45:SER:HB3	1:B:182:THR:HB	1.57	0.84
1:B:263:VAL:HG12	1:B:374:ARG:NH2	1.92	0.84
1:F:263:VAL:HG12	1:F:374:ARG:NH2	1.92	0.84
1:A:396:VAL:HG11	1:A:430:ILE:HG21	1.60	0.84
1:F:191:ILE:HB	1:F:198:GLU:CG	2.08	0.84

Continued on next page...

Continued from previous page...

Atom-1	Atom-2	Interatomic distance (Å)	Clash overlap (Å)
1:A:287:THR:HG21	1:A:425:ILE:O	1.78	0.84
1:A:147:VAL:HG11	1:A:180:MET:CE	2.08	0.83
1:E:79:THR:HG22	1:E:82:ASP:H	1.42	0.83
1:A:147:VAL:O	1:A:150:VAL:HG12	1.77	0.83
1:B:18:ILE:HB	1:B:228:THR:CG2	2.08	0.83
1:F:96:LYS:O	1:F:100:GLU:HG3	1.78	0.83
1:E:147:VAL:O	1:E:150:VAL:HG12	1.79	0.83
1:B:453:ILE:HD13	1:B:454:ASN:H	1.43	0.83
1:C:344:LEU:HD22	1:C:345:LYS:N	1.95	0.82
1:D:147:VAL:O	1:D:150:VAL:HG12	1.78	0.82
1:A:117:VAL:HA	1:A:154:TYR:OH	1.80	0.82
1:C:449:MET:HE3	1:D:467:ILE:HD11	1.60	0.82
1:B:311:ARG:HD2	1:B:371:LYS:CD	2.10	0.82
1:E:123:LEU:O	1:E:127:ILE:HG13	1.80	0.81
1:C:495:THR:HA	1:D:487:GLU:OE2	1.81	0.80
1:A:396:VAL:O	1:A:400:THR:HB	1.82	0.80
1:B:43:LEU:HD11	1:B:182:THR:OG1	1.82	0.80
1:E:262:ARG:HH22	1:E:461:SER:HB2	1.46	0.79
1:C:289:ALA:HB2	1:C:419:PHE:HA	1.64	0.79
1:F:283:ILE:HD13	1:F:400:THR:HG23	1.65	0.79
1:A:147:VAL:HG11	1:A:180:MET:HE3	1.63	0.79
1:B:191:ILE:HD12	1:B:198:GLU:HG2	1.65	0.79
1:D:495:THR:HA	1:E:487:GLU:OE2	1.82	0.79
1:C:449:MET:CE	1:D:467:ILE:HD11	2.13	0.79
1:F:379:SER:H	1:F:413:THR:HB	1.46	0.79
1:A:263:VAL:HG12	1:A:374:ARG:NH2	1.98	0.79
1:B:148:THR:HA	1:B:151:PHE:HE1	1.48	0.79
1:A:257:ARG:NH2	1:A:407:GLU:HG2	1.97	0.78
1:B:147:VAL:HG11	1:B:180:MET:HE3	1.65	0.78
1:D:287:THR:HG21	1:D:425:ILE:O	1.83	0.78
1:A:24:MET:CB	1:A:62:ASN:HD22	1.96	0.78
1:F:182:THR:HG21	1:F:192:ALA:HB1	1.65	0.78
1:A:425:ILE:HB	1:A:431:SEP:O1P	1.84	0.78
1:B:262:ARG:NH2	1:B:461:SER:HB2	1.98	0.78
1:B:283:ILE:CD1	1:B:400:THR:HG23	2.13	0.78
1:A:436:THR:HG21	1:A:458:MET:HE3	1.66	0.78
1:B:127:ILE:HG21	1:B:170:ARG:HG3	1.63	0.77
1:E:305:ALA:HB2	1:E:374:ARG:HD2	1.66	0.77
1:E:379:SER:H	1:E:413:THR:HB	1.50	0.77
1:E:269:ARG:HG2	1:E:479:ILE:HB	1.67	0.77
1:B:425:ILE:HB	1:B:431:SEP:O1P	1.84	0.77

Continued on next page...

Continued from previous page...

Atom-1	Atom-2	Interatomic distance (Å)	Clash overlap (Å)
1:B:287:THR:HG21	1:B:425:ILE:O	1.85	0.77
1:D:290:THR:HG22	2:D:901:ATP:O1G	1.84	0.77
1:C:14:GLU:HG3	1:C:16:GLN:H	1.48	0.77
1:D:311:ARG:HD2	1:D:371:LYS:CD	2.14	0.77
1:A:263:VAL:HG12	1:A:374:ARG:HH21	1.48	0.77
1:A:392:PHE:HE2	1:A:430:ILE:HD11	1.49	0.77
1:F:396:VAL:O	1:F:400:THR:HB	1.83	0.77
1:E:148:THR:OG1	1:E:182:THR:HG23	1.83	0.77
1:E:431:SEP:O	1:E:434:THR:HG22	1.84	0.77
1:F:263:VAL:CG1	1:F:374:ARG:HH21	1.97	0.76
1:E:18:ILE:H	1:E:18:ILE:CD1	1.99	0.76
1:F:184:ARG:HG2	1:F:191:ILE:O	1.86	0.76
1:B:449:MET:HE3	1:C:467:ILE:HD11	1.66	0.76
1:D:287:THR:CG2	1:D:414:ASN:HD22	1.98	0.76
1:E:325:LEU:HD23	1:E:335:PHE:HB2	1.68	0.76
1:F:79:THR:HG22	1:F:82:ASP:H	1.50	0.75
1:C:215:ARG:NE	1:C:215:ARG:HA	2.00	0.75
1:E:356:LEU:CD2	1:E:387:VAL:HG11	2.14	0.75
1:F:455:VAL:HG11	1:F:463:HIS:HB2	1.68	0.75
1:C:263:VAL:HG12	1:C:374:ARG:NH2	2.02	0.75
1:D:191:ILE:HB	1:D:198:GLU:CG	2.17	0.74
1:C:191:ILE:HB	1:C:198:GLU:HG2	1.67	0.74
1:F:489:ILE:HA	1:F:494:PRO:HG3	1.70	0.74
1:E:377:ILE:HD12	1:E:412:PHE:CE2	2.23	0.74
1:D:148:THR:CG2	1:D:193:ARG:HD2	2.18	0.74
1:E:446:ARG:HE	1:E:496:ARG:HH22	1.35	0.74
1:A:379:SER:N	1:A:413:THR:HB	2.01	0.74
1:F:287:THR:HG21	1:F:425:ILE:O	1.88	0.74
1:A:287:THR:CG2	1:A:414:ASN:HD22	2.00	0.73
1:B:148:THR:HA	1:B:151:PHE:CE1	2.23	0.73
1:E:348:CYS:HB3	1:F:254:LEU:HD23	1.69	0.73
1:B:182:THR:HG21	1:B:192:ALA:HB1	1.70	0.73
1:F:420:MET:HA	4:F:530:HOH:O	1.86	0.73
1:E:269:ARG:HB3	1:E:479:ILE:HD12	1.70	0.73
1:E:347:VAL:HG21	1:E:366:GLU:OE1	1.89	0.73
1:D:89:SER:HB2	1:E:227:GLY:O	1.88	0.73
1:A:191:ILE:HD12	1:A:198:GLU:HG2	1.71	0.73
1:A:316:ALA:O	1:A:348:CYS:HA	1.89	0.73
1:A:305:ALA:HB2	1:A:374:ARG:HD2	1.70	0.73
1:B:263:VAL:CG1	1:B:374:ARG:HH21	2.02	0.73
1:A:406:GLU:HB3	1:A:408:ILE:HG13	1.71	0.72

Continued on next page...

Continued from previous page...

Atom-1	Atom-2	Interatomic distance (Å)	Clash overlap (Å)
1:C:50:THR:HA	4:C:523:HOH:O	1.89	0.72
1:E:320:SER:HA	1:F:254:LEU:HG	1.70	0.72
1:E:489:ILE:HA	1:E:494:PRO:HG3	1.71	0.72
1:F:274:CYS:HG	1:F:278:PHE:HE2	1.35	0.72
1:F:21:MET:HE1	1:F:59:PHE:HZ	1.54	0.72
1:B:451:ARG:HG2	1:B:451:ARG:NH1	1.98	0.72
1:C:396:VAL:HG11	1:C:430:ILE:HG23	1.70	0.72
1:F:185:ILE:HD11	1:F:193:ARG:NH1	2.04	0.72
1:E:311:ARG:HD2	1:E:371:LYS:CD	2.20	0.72
1:F:191:ILE:CD1	1:F:198:GLU:HG2	2.17	0.72
1:A:96:LYS:O	1:A:100:GLU:HG3	1.90	0.72
1:C:121:PHE:O	1:C:125:ALA:HB3	1.89	0.72
1:C:215:ARG:HA	1:C:215:ARG:HE	1.54	0.72
1:D:79:THR:HG22	1:D:82:ASP:H	1.54	0.72
1:A:211:LEU:O	1:A:212:GLU:HB3	1.88	0.72
1:A:79:THR:HG21	1:A:81:GLN:HG2	1.70	0.71
1:B:191:ILE:HB	1:B:198:GLU:CG	2.19	0.71
1:E:159:VAL:O	1:E:163:GLU:HG2	1.89	0.71
1:F:363:ILE:O	1:F:367:ILE:HG13	1.91	0.71
1:B:89:SER:HB2	1:C:227:GLY:O	1.89	0.71
1:C:396:VAL:O	1:C:400:THR:HB	1.90	0.71
1:D:451:ARG:HH11	1:D:451:ARG:HG2	1.53	0.71
1:E:161:ARG:HB2	1:E:196:VAL:HG11	1.72	0.71
1:B:18:ILE:HB	1:B:228:THR:HG23	1.72	0.71
1:A:284:ILE:HB	1:A:411:LEU:HD12	1.71	0.71
1:D:311:ARG:HD2	1:D:371:LYS:HD2	1.71	0.71
1:A:150:VAL:HG13	1:A:151:PHE:N	2.04	0.71
1:E:441:GLN:HE22	1:E:490:ILE:HD13	1.56	0.71
1:B:169:ALA:O	1:B:173:GLN:HG3	1.90	0.71
1:E:487:GLU:O	1:E:488:ARG:HB2	1.90	0.71
1:A:161:ARG:HB2	1:A:196:VAL:HG11	1.72	0.70
1:D:148:THR:HG21	1:D:193:ARG:HD2	1.73	0.70
1:D:221:GLU:HG3	1:D:233:GLY:O	1.90	0.70
1:A:438:ILE:HG23	1:A:453:ILE:HD11	1.71	0.70
1:E:436:THR:HG23	1:E:458:MET:HG2	1.73	0.70
1:B:469:GLU:HB3	1:B:483:PHE:CZ	2.26	0.70
1:C:379:SER:H	1:C:413:THR:HB	1.56	0.70
1:C:311:ARG:HD2	1:C:371:LYS:CD	2.21	0.70
1:F:371:LYS:HE3	1:F:371:LYS:O	1.91	0.70
1:C:377:ILE:HD11	1:C:399:VAL:HG11	1.72	0.70
1:C:425:ILE:HD11	1:C:456:PHE:CE2	2.27	0.70

Continued on next page...

Continued from previous page...

Atom-1	Atom-2	Interatomic distance (Å)	Clash overlap (Å)
1:D:182:THR:HG21	1:D:192:ALA:HB1	1.73	0.70
1:D:453:ILE:HG21	1:D:479:ILE:HG12	1.73	0.70
1:A:375:ILE:O	1:A:410:GLY:HA2	1.91	0.70
1:E:18:ILE:HG12	1:E:228:THR:HG23	1.72	0.69
1:D:85:LYS:NZ	1:E:14:GLU:HB3	2.07	0.69
1:E:356:LEU:HD13	1:E:387:VAL:HG21	1.74	0.69
1:E:123:LEU:HD12	1:E:163:GLU:OE2	1.93	0.69
1:F:377:ILE:CD1	1:F:399:VAL:HG11	2.22	0.69
1:A:448:GLU:HG2	1:B:466:ALA:HA	1.75	0.69
1:A:453:ILE:HD13	1:A:454:ASN:N	2.07	0.69
1:C:150:VAL:HG13	1:C:151:PHE:N	2.08	0.69
1:E:248:PRO:HB2	1:E:251:ALA:HB3	1.74	0.69
1:B:299:SER:HB3	1:B:333:MET:HE1	1.74	0.69
1:E:22:ARG:HD3	4:E:531:HOH:O	1.93	0.69
1:A:224:LYS:HE2	1:F:48:SER:OG	1.92	0.69
1:B:483:PHE:HB3	1:B:486:PHE:HD1	1.57	0.69
1:A:455:VAL:HG11	1:A:463:HIS:HB2	1.75	0.69
1:C:191:ILE:HB	1:C:198:GLU:CG	2.23	0.69
2:B:901:ATP:H3'	1:C:458:MET:O	1.93	0.69
1:F:21:MET:O	1:F:35:GLY:HA3	1.93	0.69
1:B:79:THR:HG22	1:B:82:ASP:OD2	1.93	0.69
1:F:24:MET:HG3	1:F:66:GLU:HG3	1.75	0.69
1:D:325:LEU:HD23	1:D:335:PHE:HB2	1.74	0.68
1:D:370:PHE:O	1:D:371:LYS:HD3	1.93	0.68
1:C:142:VAL:O	1:C:178:THR:HA	1.93	0.68
1:B:65:ILE:HG22	1:B:65:ILE:O	1.94	0.68
1:D:267:VAL:CG2	1:D:300:ARG:HG2	2.23	0.68
1:E:14:GLU:HG3	1:E:16:GLN:H	1.57	0.68
1:E:262:ARG:NH2	1:E:461:SER:HB2	2.09	0.68
1:D:161:ARG:HB2	1:D:196:VAL:HG11	1.74	0.68
1:D:263:VAL:HG12	1:D:374:ARG:NH2	2.09	0.68
1:F:247:PHE:HZ	1:F:361:GLN:HG3	1.58	0.68
1:C:325:LEU:HD23	1:C:335:PHE:CB	2.22	0.68
1:D:212:GLU:HG2	1:D:212:GLU:O	1.91	0.68
1:A:299:SER:HB3	1:A:333:MET:HE2	1.75	0.68
1:C:469:GLU:CG	1:C:480:LYS:HE3	2.24	0.68
1:B:448:GLU:HG2	1:C:466:ALA:HA	1.74	0.68
1:F:443:VAL:HG12	1:F:445:ILE:HG13	1.75	0.68
1:F:218:ARG:HD2	4:F:521:HOH:O	1.93	0.67
1:F:325:LEU:HD23	1:F:335:PHE:HB2	1.75	0.67
1:F:377:ILE:HD11	1:F:399:VAL:HG11	1.74	0.67

Continued on next page...

Continued from previous page...

Atom-1	Atom-2	Interatomic distance (Å)	Clash overlap (Å)
1:B:363:ILE:O	1:B:367:ILE:HG13	1.94	0.67
1:C:221:GLU:HG3	1:C:233:GLY:O	1.93	0.67
1:D:446:ARG:H	1:D:496:ARG:HH12	1.40	0.67
1:A:79:THR:HG22	1:A:82:ASP:H	1.59	0.67
1:F:451:ARG:HH11	1:F:451:ARG:HG2	1.59	0.67
1:A:356:LEU:CD1	1:A:387:VAL:HG21	2.25	0.67
1:A:393:ARG:HH21	1:A:429:HIS:HB2	1.58	0.67
1:A:79:THR:HG23	1:A:81:GLN:HG2	1.76	0.67
1:A:93:ASP:HA	4:A:525:HOH:O	1.93	0.67
1:B:453:ILE:HD13	1:B:454:ASN:N	2.09	0.67
1:E:215:ARG:HD3	4:E:528:HOH:O	1.94	0.67
1:F:440:LEU:CD2	1:F:453:ILE:HG12	2.25	0.67
1:A:263:VAL:CG1	1:A:374:ARG:HH21	2.08	0.67
1:C:79:THR:HG23	1:C:81:GLN:HG2	1.77	0.67
1:D:256:GLN:HG3	1:D:404:LYS:HD3	1.77	0.67
1:C:431:SEP:O	1:C:434:THR:HG22	1.94	0.67
1:E:40:ARG:HG2	1:E:172:LYS:HE3	1.76	0.67
1:C:363:ILE:O	1:C:367:ILE:HG13	1.94	0.67
1:D:79:THR:HG22	1:D:82:ASP:HB2	1.77	0.67
1:A:43:LEU:HD11	1:A:182:THR:OG1	1.94	0.67
1:B:214:GLU:HB3	1:C:234:GLU:HB2	1.75	0.67
1:C:443:VAL:HG12	1:C:445:ILE:HG13	1.77	0.67
1:A:295:THR:HG21	1:A:319:GLU:OE2	1.94	0.66
1:A:430:ILE:HG23	1:A:433:ILE:HD12	1.76	0.66
1:D:335:PHE:HA	1:D:338:MET:HG3	1.76	0.66
1:E:115:GLN:OE1	1:E:118:VAL:HG21	1.95	0.66
1:A:347:VAL:HG21	1:A:366:GLU:OE1	1.94	0.66
1:A:451:ARG:HH11	1:A:451:ARG:HG2	1.60	0.66
1:C:299:SER:C	1:C:333:MET:HE1	2.15	0.66
1:D:114:GLY:O	1:D:115:GLN:HG3	1.96	0.66
1:D:363:ILE:O	1:D:367:ILE:HG13	1.96	0.66
1:F:377:ILE:HD12	1:F:412:PHE:CE2	2.31	0.66
1:C:191:ILE:HD12	1:C:198:GLU:HG2	1.78	0.66
1:A:21:MET:HE2	1:A:177:THR:HG21	1.77	0.66
1:F:295:THR:HG21	1:F:319:GLU:OE2	1.96	0.66
1:F:383:LEU:HD13	1:F:395:PHE:CE2	2.31	0.66
1:C:31:ILE:HG23	1:C:231:MET:HB2	1.78	0.66
1:A:363:ILE:O	1:A:367:ILE:HG13	1.96	0.66
1:B:161:ARG:HB2	1:B:196:VAL:HG11	1.77	0.65
1:C:317:TYR:HE1	1:C:377:ILE:HG23	1.60	0.65
1:E:393:ARG:O	1:E:397:ILE:HG12	1.96	0.65

Continued on next page...

Continued from previous page...

Atom-1	Atom-2	Interatomic distance (Å)	Clash overlap (Å)
1:E:247:PHE:HD2	1:E:364:LYS:HZ2	1.45	0.65
1:E:344:LEU:HD11	1:E:346:ILE:HG13	1.79	0.65
1:A:182:THR:HG21	1:A:192:ALA:HB1	1.78	0.65
1:A:392:PHE:CE2	1:A:430:ILE:HD11	2.31	0.65
1:B:148:THR:HG21	1:B:193:ARG:HD2	1.78	0.65
1:B:45:SER:CB	1:B:182:THR:HB	2.25	0.65
1:C:202:ASP:HA	1:C:226:ARG:HD2	1.78	0.65
1:E:49:GLY:HA2	2:E:903:ATP:O2B	1.95	0.65
1:A:31:ILE:HD11	1:A:246:ILE:HG21	1.77	0.65
1:B:184:ARG:HG2	1:B:191:ILE:O	1.96	0.65
1:C:471:MET:HG3	1:C:478:ASP:HB3	1.77	0.65
1:E:191:ILE:HB	1:E:198:GLU:CG	2.26	0.65
1:B:123:LEU:O	1:B:127:ILE:HG13	1.96	0.65
1:C:183:GLU:HB2	1:D:199:PHE:CE1	2.31	0.65
1:A:266:GLY:HA3	1:A:300:ARG:O	1.95	0.65
1:C:24:MET:HG3	1:C:66:GLU:HG3	1.78	0.65
1:F:185:ILE:HD11	1:F:193:ARG:HH12	1.61	0.65
1:A:406:GLU:O	1:A:407:GLU:HB2	1.96	0.65
1:B:395:PHE:O	1:B:399:VAL:HG23	1.97	0.65
1:E:347:VAL:HG12	1:E:348:CYS:N	2.10	0.65
1:E:287:THR:HG23	1:E:414:ASN:HB3	1.78	0.65
1:F:122:ASP:OD2	1:F:123:LEU:N	2.30	0.65
1:B:211:LEU:O	1:B:212:GLU:HB3	1.97	0.65
1:B:178:THR:HG22	1:B:179:VAL:N	2.12	0.65
1:D:24:MET:HG3	1:D:66:GLU:HG3	1.79	0.65
1:B:164:LEU:HD11	1:B:197:GLU:HG3	1.79	0.64
1:C:94:LEU:O	1:C:98:VAL:HG23	1.96	0.64
1:D:80:PRO:HD2	1:D:81:GLN:NE2	2.11	0.64
1:F:149:SER:HA	1:F:152:GLN:HB2	1.80	0.64
1:A:254:LEU:HG	1:F:320:SER:HA	1.80	0.64
1:F:396:VAL:HG11	1:F:430:ILE:HG23	1.78	0.64
1:A:67:PHE:HB2	1:A:69:GLU:HG3	1.79	0.64
1:F:387:VAL:CG1	1:F:391:ALA:HB3	2.26	0.64
1:B:320:SER:HA	1:C:254:LEU:HG	1.78	0.64
1:D:441:GLN:HE22	1:D:490:ILE:HD13	1.62	0.64
1:A:311:ARG:CD	1:A:371:LYS:HD2	2.21	0.64
1:B:79:THR:CG2	1:B:81:GLN:HG2	2.27	0.64
1:C:211:LEU:O	1:C:212:GLU:HB3	1.96	0.64
1:E:249:LEU:HD12	1:E:394:GLN:OE1	1.98	0.64
1:B:269:ARG:HG2	1:B:479:ILE:HB	1.78	0.64
1:B:273:MET:O	1:B:463:HIS:HA	1.98	0.64

Continued on next page...

Continued from previous page...

Atom-1	Atom-2	Interatomic distance (Å)	Clash overlap (Å)
1:B:64:ILE:HG21	1:B:97:LEU:HD22	1.79	0.64
1:E:446:ARG:HE	1:E:496:ARG:NH2	1.96	0.64
1:A:191:ILE:HB	1:A:198:GLU:CG	2.27	0.64
1:A:18:ILE:CD1	1:A:227:GLY:HA3	2.28	0.64
1:D:488:ARG:HH12	1:E:488:ARG:HH21	1.44	0.64
1:A:396:VAL:HG21	1:A:430:ILE:HD13	1.80	0.64
1:B:56:SER:HB2	1:B:143:SER:HB3	1.79	0.64
1:B:358:ASP:O	1:B:362:ILE:HG13	1.98	0.64
1:E:316:ALA:O	1:E:348:CYS:HA	1.98	0.64
1:A:183:GLU:HB2	1:B:199:PHE:CE1	2.33	0.64
1:D:146:SER:H	1:D:181:THR:HG22	1.62	0.64
1:C:88:ARG:NE	1:D:15:HIS:HA	2.13	0.63
1:D:202:ASP:HA	1:D:226:ARG:HD2	1.81	0.63
1:B:208:ARG:O	1:B:218:ARG:HA	1.99	0.63
1:B:21:MET:HE2	1:B:177:THR:HG21	1.81	0.63
1:C:123:LEU:HD12	1:C:163:GLU:OE2	1.99	0.63
1:F:269:ARG:HG2	1:F:479:ILE:HB	1.80	0.63
1:A:356:LEU:HD11	1:A:387:VAL:HG21	1.81	0.63
1:B:294:LYS:HG2	1:B:413:THR:HG23	1.80	0.63
1:C:311:ARG:HD2	1:C:371:LYS:HD2	1.78	0.63
1:A:14:GLU:HG3	1:A:16:GLN:OE1	1.99	0.63
1:A:486:PHE:HD2	1:A:494:PRO:HB2	1.62	0.63
1:D:151:PHE:C	1:D:153:GLN:H	2.02	0.63
1:C:147:VAL:HG11	1:C:180:MET:HE3	1.81	0.63
1:D:396:VAL:O	1:D:400:THR:HB	1.97	0.63
1:D:471:MET:HG3	1:D:478:ASP:HB3	1.79	0.63
1:A:267:VAL:HB	1:A:270:LEU:HB2	1.80	0.63
1:F:299:SER:HB3	1:F:333:MET:HE2	1.81	0.63
1:F:248:PRO:HB2	1:F:251:ALA:HB3	1.79	0.63
1:A:254:LEU:HD23	1:F:348:CYS:HB3	1.81	0.63
1:A:283:ILE:CD1	1:A:400:THR:HG23	2.28	0.63
1:D:294:LYS:HG2	1:D:413:THR:HG23	1.80	0.63
1:E:451:ARG:HH11	1:E:451:ARG:HG2	1.64	0.63
1:A:440:LEU:HD23	1:A:453:ILE:HG12	1.81	0.62
1:D:96:LYS:O	1:D:100:GLU:HG3	1.99	0.62
1:D:492:GLY:O	1:D:494:PRO:HD3	1.99	0.62
1:E:296:LEU:HD13	1:E:331:TRP:CD2	2.34	0.62
1:A:264:SER:HA	1:A:271:ASP:OD1	1.99	0.62
1:E:169:ALA:O	1:E:173:GLN:HG3	2.00	0.62
1:F:106:LEU:HD11	1:F:129:ARG:CZ	2.29	0.62
1:F:169:ALA:O	1:F:173:GLN:HG3	1.99	0.62

Continued on next page...

Continued from previous page...

Atom-1	Atom-2	Interatomic distance (Å)	Clash overlap (Å)
1:A:73:PHE:CE2	1:A:83:ILE:HD13	2.34	0.62
1:D:14:GLU:CD	1:D:15:HIS:H	2.03	0.62
1:C:316:ALA:O	1:C:348:CYS:HA	2.00	0.62
1:D:446:ARG:N	1:D:496:ARG:HH12	1.97	0.62
1:E:290:THR:HG22	2:E:901:ATP:O1G	2.00	0.62
1:C:203:ASN:HB3	1:C:225:LEU:HD23	1.81	0.62
1:E:150:VAL:HG13	1:E:151:PHE:N	2.14	0.62
1:F:156:ALA:O	1:F:160:VAL:HG23	2.00	0.62
1:F:231:MET:CE	1:F:251:ALA:HB2	2.30	0.62
1:B:147:VAL:HG11	1:B:180:MET:CE	2.29	0.62
1:B:396:VAL:HG11	1:B:430:ILE:HG23	1.81	0.62
1:B:56:SER:O	1:B:59:PHE:HB3	2.00	0.62
1:C:269:ARG:HG2	1:C:479:ILE:HB	1.81	0.62
1:C:453:ILE:HD13	1:C:454:ASN:N	2.14	0.62
1:F:27:GLY:HA3	1:F:246:ILE:HB	1.82	0.62
1:A:89:SER:HB2	1:B:227:GLY:O	2.00	0.62
1:D:269:ARG:HB3	1:D:479:ILE:HD12	1.81	0.62
1:E:79:THR:HG23	1:E:81:GLN:H	1.63	0.62
1:F:21:MET:HE2	1:F:177:THR:HG21	1.82	0.62
1:E:385:ARG:HA	1:F:393:ARG:HH12	1.65	0.62
1:A:18:ILE:HD13	1:A:40:ARG:NH1	2.15	0.61
1:B:130:ILE:O	1:B:134:ILE:HG13	2.01	0.61
1:C:18:ILE:HD12	1:C:227:GLY:HA3	1.82	0.61
1:D:150:VAL:HG13	1:D:151:PHE:N	2.15	0.61
1:B:316:ALA:O	1:B:348:CYS:HA	2.00	0.61
1:C:305:ALA:HB2	1:C:374:ARG:HD2	1.81	0.61
1:D:21:MET:HE1	1:D:177:THR:HB	1.81	0.61
1:D:367:ILE:HG12	1:D:375:ILE:HD11	1.80	0.61
1:F:119:GLY:HA2	1:F:122:ASP:OD1	2.00	0.61
1:B:299:SER:C	1:B:333:MET:HE1	2.21	0.61
1:C:335:PHE:HA	1:C:338:MET:HG3	1.81	0.61
1:E:70:PRO:HB2	1:E:139:ALA:HA	1.82	0.61
1:E:41:SER:HB3	1:E:178:THR:HB	1.81	0.61
1:D:123:LEU:HD12	1:D:166:ARG:HD2	1.82	0.61
1:D:194:TYR:O	1:D:196:VAL:HG23	1.99	0.61
1:B:383:LEU:HD13	1:B:395:PHE:CE2	2.36	0.61
1:F:79:THR:CG2	1:F:81:GLN:HG2	2.31	0.61
1:D:191:ILE:HB	1:D:198:GLU:HG3	1.81	0.61
1:D:358:ASP:O	1:D:362:ILE:HG13	2.01	0.61
1:F:436:THR:OG1	1:F:458:MET:HG2	2.00	0.61
1:A:156:ALA:O	1:A:160:VAL:HG23	2.00	0.61

Continued on next page...

Continued from previous page...

Atom-1	Atom-2	Interatomic distance (Å)	Clash overlap (Å)
1:A:418:GLN:HB2	1:B:423:HIS:O	2.01	0.61
1:D:267:VAL:HG22	1:D:300:ARG:HG2	1.83	0.61
1:F:370:PHE:O	1:F:371:LYS:HG3	2.00	0.61
1:B:150:VAL:HG13	1:B:151:PHE:N	2.15	0.61
1:C:79:THR:HG22	1:C:82:ASP:OD2	2.00	0.61
1:F:497:ILE:C	1:F:497:ILE:HD12	2.21	0.61
1:F:191:ILE:HD12	1:F:198:GLU:CG	2.22	0.61
1:B:267:VAL:HG12	1:B:270:LEU:H	1.65	0.60
1:B:385:ARG:HG2	1:C:393:ARG:NH1	2.16	0.60
1:C:43:LEU:HD11	1:C:182:THR:OG1	2.01	0.60
1:A:487:GLU:OE1	1:F:496:ARG:HG2	2.01	0.60
1:B:280:LYS:HE2	1:B:407:GLU:O	2.01	0.60
1:D:49:GLY:O	1:D:218:ARG:NH2	2.35	0.60
1:C:182:THR:HG22	1:C:183:GLU:N	2.17	0.60
1:C:446:ARG:HG2	1:C:496:ARG:NH2	2.17	0.60
1:F:31:ILE:HG22	1:F:222:ILE:HD12	1.82	0.60
1:A:247:PHE:HD2	1:A:364:LYS:HZ2	1.49	0.60
1:A:436:THR:CG2	1:A:458:MET:HG2	2.30	0.60
1:D:406:GLU:HB3	1:D:408:ILE:HG13	1.84	0.60
1:D:79:THR:CG2	1:D:82:ASP:H	2.13	0.60
1:E:344:LEU:HD22	1:E:345:LYS:N	2.16	0.60
1:F:111:ASP:OD1	1:F:112:PRO:HD2	2.01	0.60
1:F:53:THR:HG23	1:F:145:ASP:OD1	2.01	0.60
1:A:371:LYS:N	1:A:372:PRO:HD3	2.16	0.60
1:A:21:MET:HE1	1:A:59:PHE:HZ	1.67	0.60
1:B:49:GLY:HA2	2:B:903:ATP:O2B	2.00	0.60
1:C:215:ARG:HE	1:C:215:ARG:CA	2.13	0.60
1:C:263:VAL:CG1	1:C:374:ARG:HH21	2.13	0.60
1:C:393:ARG:O	1:C:397:ILE:HG12	2.01	0.60
1:D:317:TYR:CE2	1:D:383:LEU:HD21	2.36	0.60
1:F:161:ARG:HB2	1:F:196:VAL:HG11	1.82	0.60
1:F:353:SER:O	1:F:354:ALA:HB2	2.00	0.60
1:B:379:SER:H	1:B:413:THR:HB	1.66	0.60
1:B:441:GLN:HE22	1:B:490:ILE:HD13	1.66	0.60
1:D:283:ILE:HD12	1:D:400:THR:HG23	1.81	0.60
1:F:311:ARG:CD	1:F:371:LYS:HE2	2.30	0.60
1:A:311:ARG:HA	1:A:343:LEU:O	2.02	0.60
1:B:449:MET:CE	1:C:467:ILE:HD11	2.31	0.60
1:E:218:ARG:HG3	4:E:529:HOH:O	2.02	0.60
1:D:284:ILE:H	1:D:284:ILE:HD12	1.67	0.60
1:D:21:MET:HE3	1:D:59:PHE:CZ	2.36	0.60

Continued on next page...

Continued from previous page...

Atom-1	Atom-2	Interatomic distance (Å)	Clash overlap (Å)
1:B:393:ARG:HH21	1:B:429:HIS:CB	2.13	0.59
1:B:79:THR:HG23	1:B:81:GLN:HG2	1.82	0.59
1:F:291:GLY:HA3	1:F:442:TYR:OH	2.02	0.59
1:B:452:ALA:HA	1:B:469:GLU:HA	1.83	0.59
1:C:106:LEU:HD11	1:C:129:ARG:NH2	2.17	0.59
1:D:248:PRO:HB2	1:D:251:ALA:HB3	1.84	0.59
1:F:79:THR:HG23	1:F:81:GLN:HG2	1.85	0.59
1:A:461:SER:OG	1:A:462:TRP:N	2.35	0.59
1:E:148:THR:CG2	1:E:193:ARG:HD2	2.32	0.59
1:C:214:GLU:HB3	1:D:234:GLU:HB2	1.85	0.59
1:E:496:ARG:HG3	1:E:497:ILE:H	1.65	0.59
1:C:57:ILE:HD11	1:C:83:ILE:HG23	1.83	0.59
1:D:347:VAL:O	1:D:348:CYS:HB2	2.02	0.59
1:F:296:LEU:HD13	1:F:331:TRP:CD2	2.37	0.59
1:A:131:ASN:HD21	1:A:135:GLN:NE2	1.99	0.59
1:B:356:LEU:HD23	1:B:395:PHE:HB2	1.85	0.59
1:B:377:ILE:HD12	1:B:412:PHE:CE2	2.37	0.59
1:B:57:ILE:HD11	1:B:83:ILE:HG23	1.83	0.59
1:C:114:GLY:O	1:C:115:GLN:HB3	2.02	0.59
1:E:325:LEU:HD23	1:E:335:PHE:CB	2.32	0.59
1:E:193:ARG:NH2	1:F:195:GLY:O	2.28	0.59
1:E:147:VAL:HG11	1:E:180:MET:HE2	1.83	0.59
1:E:79:THR:CG2	1:E:82:ASP:H	2.14	0.59
1:F:150:VAL:HG13	1:F:151:PHE:N	2.18	0.59
1:F:393:ARG:O	1:F:397:ILE:HG12	2.03	0.59
1:D:73:PHE:CE2	1:D:83:ILE:HD13	2.38	0.59
1:F:67:PHE:HB2	1:F:69:GLU:HG3	1.84	0.59
1:F:70:PRO:HB2	1:F:139:ALA:HA	1.85	0.59
1:A:191:ILE:CD1	1:A:198:GLU:HG2	2.31	0.59
1:B:273:MET:CE	1:B:468:ARG:HD2	2.32	0.59
1:C:146:SER:H	1:C:181:THR:HB	1.68	0.59
1:C:367:ILE:HG12	1:C:375:ILE:HD11	1.83	0.59
1:A:74:VAL:HG22	1:A:106:LEU:HD23	1.84	0.58
1:B:294:LYS:N	2:B:901:ATP:O1B	2.36	0.58
1:C:360:LEU:CD2	1:C:364:LYS:HE3	2.33	0.58
1:C:79:THR:CG2	1:C:81:GLN:HG2	2.33	0.58
1:D:356:LEU:HD21	1:D:387:VAL:HG11	1.83	0.58
1:E:377:ILE:HD12	1:E:412:PHE:HE2	1.66	0.58
1:B:418:GLN:HB2	1:C:423:HIS:O	2.03	0.58
1:D:392:PHE:CE2	1:D:430:ILE:HD11	2.37	0.58
1:D:451:ARG:HG2	1:D:451:ARG:NH1	2.18	0.58

Continued on next page...

Continued from previous page...

Atom-1	Atom-2	Interatomic distance (Å)	Clash overlap (Å)
1:D:81:GLN:H	1:D:81:GLN:CD	2.05	0.58
1:E:214:GLU:HB3	1:F:234:GLU:HB2	1.84	0.58
1:E:31:ILE:HG22	1:E:222:ILE:HD12	1.85	0.58
1:F:440:LEU:HD21	1:F:453:ILE:HG12	1.84	0.58
1:A:303:GLU:OE2	1:A:333:MET:HB3	2.02	0.58
1:A:80:PRO:HD2	1:A:81:GLN:NE2	2.18	0.58
1:C:358:ASP:O	1:C:362:ILE:HG13	2.04	0.58
1:C:273:MET:O	1:C:463:HIS:HA	2.02	0.58
1:E:485:ASN:HD22	1:E:496:ARG:HD3	1.67	0.58
1:A:445:ILE:HD11	1:A:483:PHE:CE2	2.39	0.58
1:C:265:SER:O	1:C:301:PHE:HA	2.03	0.58
1:D:182:THR:HG21	1:D:192:ALA:CB	2.32	0.58
1:E:191:ILE:HD12	1:E:198:GLU:HG2	1.84	0.58
1:B:283:ILE:HD13	1:B:400:THR:HG23	1.85	0.58
1:C:20:LYS:HE3	1:C:228:THR:HG21	1.85	0.58
1:C:325:LEU:CD2	1:C:335:PHE:HB2	2.31	0.58
1:E:449:MET:HE3	1:F:467:ILE:HD11	1.85	0.58
1:F:392:PHE:HE2	1:F:430:ILE:HD11	1.69	0.58
1:F:425:ILE:HG22	1:F:426:THR:HG23	1.85	0.58
1:B:146:SER:H	1:B:181:THR:HB	1.68	0.58
1:C:147:VAL:HG11	1:C:180:MET:CE	2.33	0.58
1:C:296:LEU:HD13	1:C:331:TRP:CD2	2.39	0.58
1:C:451:ARG:HH11	1:C:451:ARG:HG2	1.67	0.58
1:A:370:PHE:O	1:A:371:LYS:HD3	2.03	0.58
1:B:18:ILE:HB	1:B:228:THR:HG21	1.84	0.58
1:C:321:ARG:HG2	1:C:348:CYS:SG	2.43	0.58
1:F:321:ARG:O	1:F:325:LEU:HD12	2.03	0.58
1:B:225:LEU:HD12	1:B:230:HIS:HB3	1.86	0.58
1:F:218:ARG:HB3	4:F:533:HOH:O	2.03	0.58
1:A:191:ILE:HB	1:A:198:GLU:HG2	1.86	0.58
1:B:438:ILE:HG23	1:B:453:ILE:HD11	1.84	0.58
1:C:18:ILE:CD1	1:C:227:GLY:HA3	2.34	0.58
1:D:497:ILE:HD12	1:D:497:ILE:C	2.25	0.58
1:C:225:LEU:HD12	1:C:230:HIS:HB3	1.85	0.57
1:D:439:LEU:HD12	1:D:440:LEU:N	2.19	0.57
1:D:440:LEU:CD2	1:D:453:ILE:HG12	2.34	0.57
1:E:76:PHE:HZ	1:E:126:LEU:HD21	1.68	0.57
1:E:289:ALA:HB2	1:E:419:PHE:HA	1.85	0.57
1:D:488:ARG:NH1	1:E:488:ARG:HH21	2.02	0.57
1:E:53:THR:HG23	1:E:145:ASP:OD1	2.04	0.57
1:F:182:THR:HG21	1:F:192:ALA:CB	2.33	0.57

Continued on next page...

Continued from previous page...

Atom-1	Atom-2	Interatomic distance (Å)	Clash overlap (Å)
1:B:483:PHE:HB3	1:B:486:PHE:CD1	2.37	0.57
1:B:24:MET:CB	1:B:62:ASN:HD22	2.17	0.57
1:C:85:LYS:NZ	1:D:14:GLU:HB3	2.19	0.57
1:D:203:ASN:HB3	1:D:225:LEU:HD23	1.86	0.57
1:D:392:PHE:O	1:D:396:VAL:HG23	2.04	0.57
1:F:115:GLN:HG3	1:F:116:GLU:H	1.68	0.57
1:F:377:ILE:HD12	1:F:412:PHE:HE2	1.69	0.57
1:A:69:GLU:HB3	1:A:140:ARG:HB2	1.87	0.57
1:B:471:MET:HB3	1:B:480:LYS:HZ1	1.70	0.57
1:C:24:MET:CB	1:C:62:ASN:HD22	2.17	0.57
1:A:323:GLN:HG2	1:A:327:ASN:HD21	1.68	0.57
1:A:323:GLN:HG2	1:A:327:ASN:ND2	2.19	0.57
1:D:367:ILE:O	1:D:372:PRO:HD3	2.04	0.57
1:E:186:GLU:OE1	1:E:188:TYR:N	2.35	0.57
1:E:387:VAL:HG12	1:E:391:ALA:HB3	1.85	0.57
1:F:21:MET:HE1	1:F:59:PHE:CZ	2.37	0.57
1:D:364:LYS:O	1:D:367:ILE:HB	2.04	0.57
1:B:392:PHE:HE2	1:B:430:ILE:HD11	1.70	0.57
1:E:24:MET:HB2	1:E:62:ASN:HD22	1.68	0.57
1:E:356:LEU:CD1	1:E:387:VAL:HG21	2.35	0.57
1:E:496:ARG:HG3	1:E:497:ILE:N	2.19	0.57
1:B:316:ALA:HB3	1:B:348:CYS:SG	2.45	0.57
1:A:484:ARG:NH1	1:A:484:ARG:HB3	2.19	0.57
1:C:359:HIS:O	1:C:363:ILE:HG13	2.04	0.57
1:C:396:VAL:HG11	1:C:430:ILE:CG2	2.34	0.57
1:E:461:SER:OG	1:E:462:TRP:N	2.37	0.57
1:B:123:LEU:O	1:B:123:LEU:HD13	2.04	0.57
1:B:211:LEU:O	1:B:215:ARG:O	2.23	0.57
1:B:433:ILE:O	1:B:433:ILE:HG22	2.05	0.57
1:D:269:ARG:HG2	1:D:479:ILE:HB	1.85	0.57
1:D:316:ALA:O	1:D:348:CYS:HA	2.04	0.57
1:B:267:VAL:HG23	1:B:300:ARG:HG2	1.87	0.56
1:B:471:MET:HE3	1:B:473:SER:N	2.20	0.56
1:D:305:ALA:HB2	1:D:374:ARG:HD2	1.86	0.56
1:E:359:HIS:O	1:E:363:ILE:HG13	2.05	0.56
1:F:116:GLU:OE1	1:F:117:VAL:HG23	2.05	0.56
1:F:239:ILE:HB	4:F:531:HOH:O	2.04	0.56
1:A:150:VAL:CG1	1:A:151:PHE:N	2.67	0.56
1:A:367:ILE:HG12	1:A:375:ILE:HD11	1.87	0.56
1:A:377:ILE:HD11	1:A:399:VAL:HG11	1.86	0.56
1:A:451:ARG:NH1	1:A:472:ILE:HD12	2.21	0.56

Continued on next page...

Continued from previous page...

Atom-1	Atom-2	Interatomic distance (Å)	Clash overlap (Å)
1:D:420:MET:HE2	1:D:492:GLY:HA3	1.87	0.56
1:D:79:THR:CG2	1:D:81:GLN:HG2	2.34	0.56
1:F:14:GLU:HG2	4:F:537:HOH:O	2.04	0.56
1:B:24:MET:HB2	1:B:62:ASN:HD22	1.70	0.56
1:D:287:THR:HG23	1:D:414:ASN:ND2	2.13	0.56
1:D:425:ILE:HD11	1:D:456:PHE:CE2	2.41	0.56
1:E:203:ASN:HB3	1:E:225:LEU:CD2	2.36	0.56
1:F:115:GLN:HG3	1:F:116:GLU:N	2.20	0.56
1:B:308:ASN:O	1:B:310:GLU:HG3	2.05	0.56
1:B:50:THR:HG22	1:B:209:ASN:HB2	1.88	0.56
1:C:123:LEU:HD13	1:C:166:ARG:HD2	1.87	0.56
1:C:347:VAL:HG21	1:C:366:GLU:OE1	2.05	0.56
1:C:393:ARG:NH2	1:C:429:HIS:HB2	2.11	0.56
1:D:263:VAL:HG12	1:D:374:ARG:HH21	1.70	0.56
1:F:396:VAL:HG11	1:F:430:ILE:CG2	2.36	0.56
1:A:147:VAL:HG11	1:A:180:MET:HE2	1.84	0.56
1:C:21:MET:HE2	1:C:177:THR:HG21	1.88	0.56
1:C:295:THR:HG23	1:C:378:ASP:OD2	2.05	0.56
1:E:148:THR:HG21	1:E:183:GLU:CG	2.36	0.56
1:D:193:ARG:NH2	1:E:195:GLY:O	2.32	0.56
1:F:122:ASP:O	1:F:126:LEU:N	2.30	0.56
1:A:396:VAL:HG11	1:A:430:ILE:HG23	1.84	0.56
1:B:164:LEU:O	1:B:168:VAL:HG23	2.05	0.56
1:C:148:THR:OG1	1:C:182:THR:HG23	2.06	0.56
1:C:187:GLU:O	1:C:208:ARG:HD3	2.06	0.56
1:F:49:GLY:HA2	2:F:903:ATP:O2B	2.06	0.56
1:A:130:ILE:O	1:A:134:ILE:HG13	2.05	0.56
1:F:115:GLN:CG	1:F:116:GLU:H	2.17	0.56
1:F:313:ILE:CD1	1:F:372:PRO:HG2	2.36	0.56
1:B:344:LEU:HD22	1:B:345:LYS:N	2.21	0.56
1:C:370:PHE:O	1:C:371:LYS:HD3	2.06	0.56
1:F:435:ASP:HA	1:F:459:ARG:HD2	1.86	0.56
1:A:325:LEU:HD23	1:A:335:PHE:HB2	1.88	0.56
1:A:471:MET:HG3	1:A:478:ASP:HB3	1.88	0.56
1:B:293:GLY:O	1:B:296:LEU:HB3	2.05	0.56
1:C:211:LEU:HD12	1:C:215:ARG:O	2.05	0.56
1:F:334:ASP:O	1:F:338:MET:HG2	2.06	0.56
1:A:21:MET:CE	1:A:59:PHE:HZ	2.18	0.56
1:A:356:LEU:HD22	1:A:387:VAL:HG11	1.88	0.56
1:A:364:LYS:HG2	1:A:402:TYR:CE2	2.41	0.56
1:B:123:LEU:HD12	1:B:166:ARG:HD2	1.88	0.56

Continued on next page...

Continued from previous page...

Atom-1	Atom-2	Interatomic distance (Å)	Clash overlap (Å)
1:C:377:ILE:CD1	1:C:399:VAL:HG11	2.35	0.56
1:D:85:LYS:HZ3	1:E:14:GLU:HB3	1.69	0.56
1:E:311:ARG:HA	1:E:343:LEU:O	2.06	0.56
1:A:347:VAL:O	1:A:348:CYS:HB2	2.05	0.55
1:C:150:VAL:CG1	1:C:151:PHE:N	2.69	0.55
1:D:161:ARG:HD2	1:D:196:VAL:HG13	1.88	0.55
1:F:357:GLU:HG3	1:F:358:ASP:N	2.21	0.55
1:A:488:ARG:NE	1:F:488:ARG:HH12	2.05	0.55
1:B:62:ASN:O	1:B:66:GLU:HB2	2.06	0.55
1:D:483:PHE:HB2	1:D:489:ILE:HD13	1.88	0.55
1:E:148:THR:HG21	1:E:183:GLU:HG3	1.87	0.55
1:A:348:CYS:HB3	1:B:254:LEU:HD23	1.87	0.55
1:E:264:SER:O	1:E:374:ARG:NH2	2.40	0.55
1:E:313:ILE:CD1	1:E:372:PRO:HG2	2.36	0.55
1:A:70:PRO:HA	1:A:102:LYS:O	2.06	0.55
1:B:131:ASN:O	1:B:135:GLN:HG3	2.06	0.55
1:A:323:GLN:NE2	1:B:459:ARG:HD3	2.22	0.55
1:D:75:THR:HG23	1:D:75:THR:O	2.07	0.55
1:F:191:ILE:HB	1:F:198:GLU:CD	2.26	0.55
1:F:387:VAL:HG13	1:F:391:ALA:HB3	1.87	0.55
1:A:230:HIS:CD2	2:F:903:ATP:O2'	2.59	0.55
1:A:49:GLY:HA2	2:A:903:ATP:O2B	2.06	0.55
1:C:144:ILE:HG21	1:C:147:VAL:HG12	1.88	0.55
1:E:357:GLU:HG3	1:E:358:ASP:N	2.21	0.55
1:F:294:LYS:N	2:F:901:ATP:O1B	2.40	0.55
1:F:357:GLU:HG3	1:F:358:ASP:H	1.71	0.55
1:C:406:GLU:HB3	1:C:408:ILE:HG13	1.88	0.55
1:E:185:ILE:HD11	1:E:193:ARG:HH12	1.72	0.55
1:F:287:THR:HG23	1:F:414:ASN:HD22	1.71	0.55
1:B:471:MET:HB3	1:B:480:LYS:NZ	2.21	0.55
1:C:85:LYS:HZ1	1:D:14:GLU:HB3	1.72	0.55
1:D:426:THR:OG1	1:D:431:SEP:O3P	2.23	0.55
1:A:87:ALA:O	1:A:92:TRP:HB2	2.06	0.55
1:B:340:ARG:C	1:B:342:ASN:H	2.10	0.55
1:C:267:VAL:HB	1:C:270:LEU:HB2	1.89	0.55
1:D:332:GLY:O	1:D:333:MET:O	2.25	0.55
1:F:249:LEU:HD12	1:F:394:GLN:CD	2.27	0.55
1:D:321:ARG:HG2	1:D:348:CYS:SG	2.47	0.55
1:D:393:ARG:O	1:D:397:ILE:HG12	2.06	0.55
1:F:16:GLN:HE22	1:F:33:HIS:HB3	1.72	0.55
1:F:344:LEU:HD11	1:F:346:ILE:HG13	1.87	0.55

Continued on next page...

Continued from previous page...

Atom-1	Atom-2	Interatomic distance (Å)	Clash overlap (Å)
2:E:901:ATP:H3'	1:F:458:MET:O	2.07	0.55
1:A:45:SER:HB3	1:A:182:THR:HB	1.89	0.55
1:B:393:ARG:NH2	1:B:429:HIS:HB2	2.17	0.55
1:A:184:ARG:HD3	4:A:524:HOH:O	2.08	0.54
1:A:220:LEU:C	1:A:220:LEU:HD23	2.27	0.54
1:B:150:VAL:O	1:B:153:GLN:HG3	2.06	0.54
1:C:311:ARG:HA	1:C:343:LEU:O	2.07	0.54
1:D:178:THR:HG22	1:D:179:VAL:N	2.22	0.54
1:D:221:GLU:HG3	1:D:233:GLY:C	2.26	0.54
1:F:79:THR:HG23	1:F:81:GLN:H	1.72	0.54
1:B:191:ILE:HB	1:B:198:GLU:HG3	1.88	0.54
1:C:360:LEU:HD21	1:C:364:LYS:HE3	1.90	0.54
1:F:191:ILE:HB	1:F:198:GLU:HG3	1.85	0.54
1:B:71:GLY:O	1:B:103:LEU:HD12	2.08	0.54
1:C:67:PHE:HB2	1:C:69:GLU:HG3	1.88	0.54
1:F:344:LEU:HD22	1:F:345:LYS:N	2.22	0.54
1:B:448:GLU:HG2	1:C:466:ALA:CA	2.37	0.54
1:C:41:SER:HA	1:C:178:THR:O	2.07	0.54
1:D:18:ILE:HD13	1:D:40:ARG:NH1	2.22	0.54
1:D:294:LYS:HB2	2:D:901:ATP:O1B	2.08	0.54
1:F:247:PHE:HZ	1:F:361:GLN:CG	2.19	0.54
1:A:484:ARG:HB3	1:A:484:ARG:HH11	1.71	0.54
1:B:377:ILE:HD12	1:B:412:PHE:HE2	1.71	0.54
1:B:437:ILE:CD1	1:B:457:LYS:HE2	2.37	0.54
1:C:146:SER:HA	1:C:181:THR:O	2.06	0.54
1:C:185:ILE:HD11	1:C:193:ARG:HH12	1.73	0.54
1:F:170:ARG:HD2	1:F:173:GLN:OE1	2.07	0.54
1:A:84:ILE:HG21	1:A:95:ALA:HB2	1.89	0.54
1:B:283:ILE:HD12	1:B:400:THR:HG23	1.90	0.54
1:C:334:ASP:O	1:C:338:MET:HG2	2.08	0.54
1:D:379:SER:H	1:D:413:THR:HB	1.72	0.54
1:C:448:GLU:HG2	1:D:466:ALA:HA	1.90	0.54
1:E:56:SER:HB2	1:E:143:SER:HB2	1.89	0.54
1:A:70:PRO:HB2	1:A:139:ALA:HA	1.90	0.54
1:D:76:PHE:O	1:D:109:SER:HA	2.08	0.54
1:E:147:VAL:HG11	1:E:180:MET:CE	2.37	0.54
1:E:284:ILE:HD12	1:E:284:ILE:N	2.22	0.54
1:E:294:LYS:N	2:E:901:ATP:O1B	2.40	0.54
1:D:377:ILE:HD12	1:D:412:PHE:CE2	2.42	0.54
1:F:347:VAL:O	1:F:348:CYS:HB2	2.07	0.54
1:A:208:ARG:NH2	1:A:221:GLU:OE2	2.40	0.54

Continued on next page...

Continued from previous page...

Atom-1	Atom-2	Interatomic distance (Å)	Clash overlap (Å)
1:B:387:VAL:HG12	1:B:391:ALA:HB3	1.90	0.54
1:B:461:SER:OG	1:B:462:TRP:N	2.41	0.54
1:F:461:SER:OG	1:F:462:TRP:N	2.39	0.54
1:C:371:LYS:HD3	1:C:371:LYS:O	2.08	0.53
1:C:440:LEU:CD2	1:C:453:ILE:HG12	2.38	0.53
1:E:449:MET:HE3	1:F:490:ILE:HD11	1.90	0.53
1:A:357:GLU:HG3	1:A:358:ASP:N	2.24	0.53
1:D:356:LEU:CD2	1:D:387:VAL:HG11	2.37	0.53
1:E:191:ILE:HB	1:E:198:GLU:HG2	1.89	0.53
1:E:381:SER:O	1:E:384:ALA:HB3	2.08	0.53
1:F:370:PHE:C	1:F:371:LYS:HG3	2.29	0.53
1:B:164:LEU:CD1	1:B:197:GLU:HG3	2.38	0.53
1:B:73:PHE:CE2	1:B:83:ILE:HD13	2.43	0.53
1:C:45:SER:HB2	1:C:182:THR:HB	1.90	0.53
1:E:150:VAL:CG1	1:E:151:PHE:N	2.71	0.53
1:E:306:CYS:SG	1:E:344:LEU:HB2	2.48	0.53
1:B:438:ILE:CG2	1:B:453:ILE:HD11	2.38	0.53
1:D:285:LEU:HD12	1:D:412:PHE:O	2.07	0.53
1:E:295:THR:HG21	1:E:319:GLU:OE2	2.07	0.53
1:F:131:ASN:HD21	1:F:135:GLN:NE2	2.05	0.53
1:F:144:ILE:CG2	1:F:147:VAL:HG12	2.39	0.53
1:F:283:ILE:HG23	1:F:412:PHE:CE1	2.43	0.53
1:A:186:GLU:HB3	1:A:189:GLY:HA3	1.90	0.53
1:A:344:LEU:HD22	1:A:345:LYS:N	2.24	0.53
1:C:247:PHE:HD2	1:C:364:LYS:HZ2	1.56	0.53
1:C:116:GLU:O	1:C:117:VAL:HB	2.08	0.53
1:C:70:PRO:HA	1:C:102:LYS:O	2.08	0.53
1:E:79:THR:CG2	1:E:81:GLN:HG2	2.38	0.53
1:F:21:MET:HE3	1:F:59:PHE:CE1	2.44	0.53
1:A:364:LYS:HG2	1:A:402:TYR:CD2	2.43	0.53
1:A:436:THR:CG2	1:A:458:MET:HE3	2.38	0.53
1:C:45:SER:CB	1:C:182:THR:HB	2.39	0.53
1:C:23:THR:O	1:C:24:MET:HB2	2.08	0.53
1:F:248:PRO:O	1:F:250:GLY:N	2.42	0.53
1:A:387:VAL:HG12	1:A:391:ALA:HB3	1.89	0.53
1:A:440:LEU:CD2	1:A:453:ILE:HG12	2.39	0.53
1:B:455:VAL:HG11	1:B:463:HIS:HB2	1.90	0.53
1:B:57:ILE:HD11	1:B:83:ILE:CG2	2.38	0.53
1:C:462:TRP:O	1:C:463:HIS:O	2.27	0.53
1:D:150:VAL:O	1:D:153:GLN:HG3	2.09	0.53
1:D:267:VAL:HG23	1:D:300:ARG:HG2	1.90	0.53

Continued on next page...

Continued from previous page...

Atom-1	Atom-2	Interatomic distance (Å)	Clash overlap (Å)
1:D:447:GLY:HA2	1:E:489:ILE:HD12	1.90	0.53
1:E:89:SER:HB2	1:F:227:GLY:O	2.08	0.53
1:A:256:GLN:O	1:F:322:ALA:HB3	2.09	0.53
1:F:283:ILE:HD11	1:F:404:LYS:HG3	1.91	0.53
1:F:21:MET:CE	1:F:59:PHE:CZ	2.91	0.53
1:A:79:THR:HG23	1:A:81:GLN:HE21	1.73	0.53
1:D:317:TYR:CD2	1:D:383:LEU:HD21	2.43	0.53
1:B:248:PRO:HB2	1:B:251:ALA:HB3	1.91	0.53
1:C:299:SER:O	1:C:333:MET:HE1	2.09	0.53
1:C:81:GLN:CD	1:C:81:GLN:H	2.12	0.53
1:F:371:LYS:N	1:F:372:PRO:HD3	2.24	0.53
1:B:212:GLU:HG2	1:B:212:GLU:O	2.08	0.52
1:B:99:ASP:C	1:B:101:GLY:H	2.10	0.52
1:C:185:ILE:HD11	1:C:193:ARG:NH1	2.25	0.52
1:C:446:ARG:HG2	1:C:496:ARG:CZ	2.38	0.52
1:E:80:PRO:O	1:E:84:ILE:HG13	2.09	0.52
1:C:397:ILE:HD13	1:C:433:ILE:HD13	1.90	0.52
1:C:81:GLN:H	1:C:81:GLN:NE2	2.07	0.52
1:E:208:ARG:NH2	1:E:221:GLU:OE2	2.42	0.52
1:E:363:ILE:O	1:E:367:ILE:HG13	2.10	0.52
1:F:56:SER:HB2	1:F:143:SER:HB2	1.90	0.52
1:C:420:MET:HE2	1:C:492:GLY:HA3	1.91	0.52
1:E:123:LEU:CD1	1:E:166:ARG:HD2	2.29	0.52
1:F:289:ALA:HB2	1:F:419:PHE:HA	1.91	0.52
1:A:451:ARG:NH1	1:A:451:ARG:HG2	2.24	0.52
1:A:80:PRO:HD2	1:A:81:GLN:HE21	1.73	0.52
1:C:159:VAL:O	1:C:163:GLU:HG2	2.09	0.52
1:E:81:GLN:CD	1:E:81:GLN:H	2.11	0.52
1:F:113:GLU:O	1:F:114:GLY:O	2.27	0.52
1:F:129:ARG:O	1:F:132:TYR:HB3	2.09	0.52
1:F:94:LEU:O	1:F:98:VAL:HG23	2.10	0.52
1:D:335:PHE:HA	1:D:338:MET:CG	2.40	0.52
1:E:367:ILE:HG12	1:E:375:ILE:HD11	1.90	0.52
1:F:382:ALA:O	1:F:385:ARG:HG3	2.09	0.52
1:A:264:SER:HB3	1:A:304:ASN:HD21	1.75	0.52
1:D:392:PHE:HE2	1:D:430:ILE:HD11	1.74	0.52
1:E:21:MET:HE3	1:E:59:PHE:CE1	2.45	0.52
1:E:203:ASN:HB3	1:E:225:LEU:HD23	1.92	0.52
1:F:329:TYR:HA	1:F:332:GLY:O	2.10	0.52
1:F:425:ILE:HD11	1:F:456:PHE:CE2	2.44	0.52
1:C:134:ILE:HG23	1:C:139:ALA:HB3	1.92	0.52

Continued on next page...

Continued from previous page...

Atom-1	Atom-2	Interatomic distance (Å)	Clash overlap (Å)
1:B:85:LYS:HE3	1:C:17:ALA:O	2.10	0.52
1:D:396:VAL:HG11	1:D:430:ILE:CG2	2.39	0.52
1:E:344:LEU:C	1:E:344:LEU:HD13	2.30	0.52
1:F:316:ALA:O	1:F:348:CYS:HA	2.10	0.52
1:F:393:ARG:HH21	1:F:429:HIS:HB2	1.74	0.52
1:B:117:VAL:O	1:B:117:VAL:HG12	2.10	0.52
1:B:492:GLY:C	1:B:494:PRO:HD3	2.30	0.52
1:C:122:ASP:O	1:C:123:LEU:C	2.47	0.52
1:C:215:ARG:NE	1:C:215:ARG:CA	2.70	0.52
1:C:392:PHE:CE2	1:C:430:ILE:HD11	2.45	0.52
1:C:469:GLU:HB3	1:C:483:PHE:CZ	2.44	0.52
1:A:359:HIS:O	1:A:363:ILE:HG13	2.10	0.52
1:A:382:ALA:O	1:A:385:ARG:HG3	2.10	0.52
1:B:170:ARG:O	1:B:174:ILE:HG13	2.10	0.52
1:D:130:ILE:O	1:D:134:ILE:HG13	2.09	0.52
1:E:365:SER:HA	1:E:368:ASN:HD22	1.75	0.52
1:B:18:ILE:CB	1:B:228:THR:HG23	2.40	0.52
1:B:370:PHE:O	1:B:371:LYS:HD3	2.10	0.52
1:B:451:ARG:HD2	1:B:451:ARG:N	2.25	0.52
2:B:901:ATP:O3'	1:C:457:LYS:HB2	2.09	0.52
1:E:293:GLY:HA2	2:E:901:ATP:O1A	2.10	0.52
1:D:488:ARG:HH12	1:E:488:ARG:NH2	2.08	0.52
1:F:21:MET:HG2	1:F:141:ARG:NH2	2.25	0.52
1:B:353:SER:O	1:B:354:ALA:HB2	2.10	0.51
1:B:73:PHE:HE2	1:B:83:ILE:HD13	1.74	0.51
1:C:111:ASP:OD2	1:C:113:GLU:HG2	2.09	0.51
1:C:356:LEU:CD2	1:C:387:VAL:HG11	2.40	0.51
1:D:143:SER:HA	1:D:179:VAL:O	2.10	0.51
1:D:347:VAL:HG21	1:D:366:GLU:OE1	2.10	0.51
1:E:335:PHE:O	1:E:339:GLU:HG3	2.10	0.51
1:F:340:ARG:C	1:F:342:ASN:H	2.13	0.51
1:F:486:PHE:HE2	1:F:496:ARG:HD2	1.75	0.51
1:C:127:ILE:HD13	1:C:170:ARG:HG3	1.92	0.51
1:F:23:THR:O	1:F:24:MET:HB2	2.10	0.51
1:F:264:SER:O	1:F:374:ARG:NH2	2.43	0.51
1:A:150:VAL:HG13	1:A:151:PHE:H	1.71	0.51
1:C:262:ARG:NH2	1:C:461:SER:HB2	2.25	0.51
1:E:81:GLN:CD	1:E:81:GLN:N	2.63	0.51
1:F:159:VAL:O	1:F:163:GLU:HG2	2.11	0.51
1:B:49:GLY:O	1:B:218:ARG:NH2	2.43	0.51
1:D:495:THR:O	1:D:495:THR:HG22	2.09	0.51

Continued on next page...

Continued from previous page...

Atom-1	Atom-2	Interatomic distance (Å)	Clash overlap (Å)
1:F:81:GLN:N	1:F:81:GLN:CD	2.63	0.51
1:A:291:GLY:O	2:A:901:ATP:H4'	2.09	0.51
1:C:120:GLY:C	1:C:122:ASP:H	2.14	0.51
1:D:338:MET:HB3	1:D:344:LEU:HB3	1.93	0.51
1:D:375:ILE:O	1:D:410:GLY:HA2	2.10	0.51
1:F:14:GLU:HG3	1:F:16:GLN:HG3	1.92	0.51
1:F:73:PHE:CE2	1:F:83:ILE:HD13	2.44	0.51
1:B:85:LYS:HZ3	1:C:14:GLU:HB3	1.76	0.51
1:C:262:ARG:HH22	1:C:461:SER:HB2	1.76	0.51
1:D:303:GLU:OE2	1:D:333:MET:HB3	2.10	0.51
1:E:24:MET:CB	1:E:62:ASN:HD22	2.23	0.51
1:E:462:TRP:O	1:E:463:HIS:CD2	2.64	0.51
1:D:354:ALA:HB3	1:D:359:HIS:CE1	2.45	0.51
1:D:471:MET:HE2	1:D:471:MET:O	2.10	0.51
1:D:487:GLU:OE1	1:D:497:ILE:HG21	2.11	0.51
1:D:50:THR:HG22	1:D:209:ASN:HB2	1.91	0.51
1:E:14:GLU:HG3	1:E:16:GLN:HB2	1.92	0.51
1:E:444:GLU:HB2	1:E:449:MET:HE1	1.93	0.51
1:B:25:ILE:HG12	1:B:58:GLN:NE2	2.26	0.51
1:C:117:VAL:HG12	1:C:117:VAL:O	2.11	0.51
1:D:334:ASP:O	1:D:338:MET:HG2	2.11	0.51
1:D:344:LEU:HD22	1:D:345:LYS:N	2.25	0.51
1:D:469:GLU:HG3	1:D:480:LYS:HE3	1.93	0.51
1:F:357:GLU:CG	1:F:358:ASP:H	2.24	0.51
1:A:21:MET:CE	1:A:59:PHE:CZ	2.94	0.51
1:B:371:LYS:O	1:B:371:LYS:HD3	2.11	0.51
1:C:64:ILE:CD1	1:C:103:LEU:HB2	2.40	0.51
1:C:18:ILE:HB	1:C:228:THR:HG23	1.93	0.51
1:C:44:VAL:HG22	1:C:205:VAL:HB	1.92	0.51
1:A:152:GLN:NE2	1:A:193:ARG:HD3	2.25	0.51
1:A:356:LEU:HD13	1:A:387:VAL:HG21	1.93	0.51
1:B:449:MET:HE1	1:C:490:ILE:HD11	1.93	0.51
1:C:88:ARG:HG2	1:C:88:ARG:HH11	1.75	0.51
1:F:359:HIS:O	1:F:363:ILE:HG13	2.11	0.51
1:A:356:LEU:CD2	1:A:387:VAL:HG11	2.41	0.50
1:C:377:ILE:HD12	1:C:412:PHE:CE2	2.46	0.50
1:A:296:LEU:HD13	1:A:331:TRP:CD2	2.46	0.50
1:B:334:ASP:OD1	1:B:336:GLU:HB2	2.11	0.50
1:F:123:LEU:HD12	1:F:166:ARG:HD2	1.92	0.50
1:F:486:PHE:CE2	1:F:496:ARG:HD2	2.46	0.50
1:B:150:VAL:CG1	1:B:151:PHE:N	2.74	0.50

Continued on next page...

Continued from previous page...

Atom-1	Atom-2	Interatomic distance (Å)	Clash overlap (Å)
1:C:144:ILE:CG2	1:C:147:VAL:HG12	2.41	0.50
1:D:431:SEP:O	1:D:434:THR:HG22	2.11	0.50
1:E:371:LYS:HD3	1:E:371:LYS:O	2.11	0.50
1:E:396:VAL:O	1:E:400:THR:HB	2.11	0.50
1:B:367:ILE:HG12	1:B:375:ILE:HD11	1.92	0.50
1:E:357:GLU:HG3	1:E:358:ASP:H	1.76	0.50
1:F:451:ARG:HD2	1:F:451:ARG:N	2.26	0.50
1:B:392:PHE:CE2	1:B:430:ILE:HD11	2.46	0.50
1:B:487:GLU:O	1:B:488:ARG:HB2	2.12	0.50
1:D:412:PHE:CD1	1:D:412:PHE:N	2.79	0.50
1:E:73:PHE:CE2	1:E:83:ILE:HD13	2.46	0.50
1:A:334:ASP:OD1	1:A:336:GLU:HB2	2.12	0.50
1:A:21:MET:HE3	1:A:59:PHE:CE1	2.47	0.50
1:C:151:PHE:C	1:C:153:GLN:H	2.12	0.50
1:C:387:VAL:HG13	1:C:391:ALA:HB3	1.93	0.50
1:E:41:SER:CB	1:E:178:THR:HB	2.41	0.50
1:E:385:ARG:HA	1:F:393:ARG:NH1	2.25	0.50
1:B:159:VAL:O	1:B:163:GLU:HG2	2.11	0.50
1:B:371:LYS:N	1:B:372:PRO:HD3	2.27	0.50
1:E:143:SER:HA	1:E:179:VAL:O	2.11	0.50
1:A:471:MET:HE2	1:A:478:ASP:HB3	1.92	0.50
1:B:129:ARG:O	1:B:132:TYR:HB3	2.12	0.50
1:B:178:THR:CG2	1:B:179:VAL:N	2.75	0.50
1:C:96:LYS:O	1:C:100:GLU:HG3	2.12	0.50
1:D:284:ILE:HD12	1:D:284:ILE:N	2.26	0.50
1:D:294:LYS:N	2:D:901:ATP:O1B	2.42	0.50
1:D:320:SER:HA	1:E:254:LEU:HG	1.94	0.50
1:F:400:THR:HG21	1:F:433:ILE:CG2	2.42	0.50
1:C:150:VAL:CG1	1:C:151:PHE:H	2.25	0.50
1:D:451:ARG:HB3	1:D:470:PHE:CE2	2.47	0.50
1:A:150:VAL:CG1	1:A:151:PHE:H	2.24	0.49
1:B:462:TRP:O	1:B:463:HIS:O	2.29	0.49
1:B:497:ILE:HD12	1:B:497:ILE:C	2.32	0.49
1:C:385:ARG:HA	1:D:393:ARG:HH12	1.76	0.49
1:F:293:GLY:HA2	2:F:901:ATP:O1A	2.12	0.49
1:D:283:ILE:CD1	1:D:400:THR:HG23	2.43	0.49
1:D:468:ARG:HH11	1:D:468:ARG:HG2	1.77	0.49
1:E:444:GLU:OE1	1:F:490:ILE:HG12	2.12	0.49
1:D:495:THR:HG23	1:E:487:GLU:OE2	2.13	0.49
1:A:56:SER:HB2	1:A:143:SER:HB2	1.94	0.49
1:B:84:ILE:HG23	1:B:94:LEU:HB2	1.93	0.49

Continued on next page...

Continued from previous page...

Atom-1	Atom-2	Interatomic distance (Å)	Clash overlap (Å)
1:C:356:LEU:HD21	1:C:387:VAL:HG11	1.94	0.49
1:F:123:LEU:O	1:F:127:ILE:HG13	2.12	0.49
1:F:285:LEU:HD12	1:F:286:ALA:N	2.26	0.49
1:A:131:ASN:ND2	1:A:135:GLN:NE2	2.59	0.49
1:A:451:ARG:HD2	1:A:451:ARG:N	2.28	0.49
1:B:430:ILE:O	1:B:433:ILE:HB	2.12	0.49
1:C:191:ILE:HD13	1:C:223:LEU:HD12	1.95	0.49
1:D:182:THR:HG22	1:D:183:GLU:N	2.26	0.49
1:E:79:THR:HG23	1:E:81:GLN:HG2	1.95	0.49
1:F:231:MET:HE3	1:F:251:ALA:HB2	1.94	0.49
1:F:49:GLY:CA	2:F:903:ATP:O2B	2.60	0.49
1:A:248:PRO:HB2	1:A:251:ALA:HB3	1.92	0.49
1:B:127:ILE:HG22	1:B:127:ILE:O	2.13	0.49
1:B:145:ASP:HA	1:B:181:THR:HB	1.93	0.49
1:C:184:ARG:HG2	1:C:191:ILE:O	2.12	0.49
1:C:488:ARG:HH22	1:D:488:ARG:NH2	1.98	0.49
1:D:279:PHE:HB2	1:D:282:SER:HB3	1.94	0.49
1:D:311:ARG:HD2	1:D:371:LYS:HD3	1.94	0.49
1:D:371:LYS:HD3	1:D:371:LYS:O	2.13	0.49
1:D:486:PHE:CE2	1:D:496:ARG:HB3	2.47	0.49
1:D:64:ILE:CD1	1:D:103:LEU:HB2	2.42	0.49
1:E:452:ALA:HA	1:E:469:GLU:HA	1.93	0.49
1:A:304:ASN:HB3	1:A:374:ARG:HH12	1.77	0.49
1:E:191:ILE:CG2	1:E:198:GLU:HG3	2.42	0.49
1:F:144:ILE:HG22	1:F:147:VAL:HG12	1.95	0.49
1:E:318:GLU:OE2	1:F:432:ALA:HB1	2.12	0.49
1:F:52:LYS:N	2:F:903:ATP:O1B	2.43	0.49
1:A:127:ILE:HD13	1:A:170:ARG:HG3	1.95	0.49
1:A:230:HIS:NE2	2:F:903:ATP:O2'	2.45	0.49
1:C:214:GLU:O	1:C:215:ARG:NH2	2.42	0.49
1:D:79:THR:HG22	1:D:82:ASP:CB	2.42	0.49
1:E:46:GLY:HA2	1:E:184:ARG:HD3	1.94	0.49
1:E:484:ARG:HB3	1:E:484:ARG:NH1	2.26	0.49
1:A:211:LEU:O	1:A:212:GLU:CB	2.61	0.49
1:A:285:LEU:HA	1:A:412:PHE:O	2.13	0.49
1:C:301:PHE:O	1:C:374:ARG:NH1	2.46	0.49
1:C:325:LEU:CD2	1:C:335:PHE:CB	2.90	0.49
1:F:131:ASN:ND2	1:F:135:GLN:NE2	2.60	0.49
1:F:336:GLU:HB3	1:F:340:ARG:NH2	2.28	0.49
1:F:21:MET:CE	1:F:59:PHE:HZ	2.22	0.49
1:B:211:LEU:HA	1:B:216:ARG:HD3	1.95	0.49

Continued on next page...

Continued from previous page...

Atom-1	Atom-2	Interatomic distance (Å)	Clash overlap (Å)
1:D:203:ASN:OD1	1:D:225:LEU:HA	2.13	0.49
1:A:338:MET:HB3	1:A:344:LEU:HB3	1.95	0.49
1:C:337:GLU:OE1	1:C:340:ARG:NH1	2.45	0.49
1:E:292:THR:HB	1:E:440:LEU:HB3	1.94	0.49
1:E:76:PHE:CZ	1:E:126:LEU:HD21	2.47	0.49
1:F:240:THR:C	1:F:242:HIS:H	2.15	0.49
1:F:486:PHE:HE2	1:F:496:ARG:CD	2.25	0.49
1:D:64:ILE:HD11	1:D:103:LEU:HB2	1.94	0.48
1:D:151:PHE:C	1:D:153:GLN:N	2.67	0.48
1:D:79:THR:HG23	1:D:81:GLN:HG2	1.95	0.48
1:E:170:ARG:O	1:E:174:ILE:HG13	2.13	0.48
1:F:453:ILE:HD13	1:F:454:ASN:H	1.75	0.48
1:A:273:MET:O	1:A:464:ASP:N	2.38	0.48
1:C:150:VAL:O	1:C:153:GLN:HG3	2.13	0.48
1:C:392:PHE:HE2	1:C:430:ILE:HD11	1.79	0.48
1:C:419:PHE:O	1:C:420:MET:HB2	2.13	0.48
1:E:43:LEU:HD11	1:E:182:THR:OG1	2.13	0.48
1:E:348:CYS:O	1:E:349:ALA:HB2	2.14	0.48
1:F:484:ARG:HB3	1:F:484:ARG:NH1	2.28	0.48
1:D:269:ARG:NH1	1:D:269:ARG:HG3	2.27	0.48
1:D:299:SER:HB3	1:D:333:MET:HE1	1.95	0.48
1:D:340:ARG:C	1:D:342:ASN:H	2.16	0.48
1:E:396:VAL:HG11	1:E:430:ILE:CG2	2.44	0.48
1:E:425:ILE:HD11	1:E:456:PHE:CE2	2.48	0.48
1:F:194:TYR:O	1:F:196:VAL:HG23	2.13	0.48
1:F:311:ARG:HA	1:F:343:LEU:O	2.11	0.48
1:B:194:TYR:O	1:B:196:VAL:HG23	2.14	0.48
1:B:425:ILE:HD11	1:B:456:PHE:CE2	2.48	0.48
1:B:451:ARG:CG	1:B:451:ARG:NH1	2.67	0.48
1:B:65:ILE:O	1:B:65:ILE:CG2	2.60	0.48
1:D:98:VAL:HA	1:D:103:LEU:O	2.13	0.48
1:F:154:TYR:HD1	1:F:154:TYR:O	1.97	0.48
1:A:161:ARG:CB	1:A:196:VAL:HG11	2.43	0.48
1:A:269:ARG:HG2	1:A:479:ILE:HB	1.95	0.48
1:B:208:ARG:NH2	1:B:221:GLU:OE2	2.46	0.48
1:B:441:GLN:NE2	1:B:490:ILE:HD13	2.28	0.48
1:C:214:GLU:C	1:C:215:ARG:HE	2.17	0.48
1:D:182:THR:CG2	1:D:183:GLU:N	2.75	0.48
1:E:248:PRO:HB2	1:E:251:ALA:CB	2.43	0.48
1:E:295:THR:HG23	1:E:378:ASP:OD2	2.13	0.48
1:A:45:SER:CB	1:A:182:THR:HB	2.42	0.48

Continued on next page...

Continued from previous page...

Atom-1	Atom-2	Interatomic distance (Å)	Clash overlap (Å)
1:A:283:ILE:HD11	1:A:400:THR:HG23	1.93	0.48
1:A:316:ALA:HB3	1:A:348:CYS:SG	2.54	0.48
1:A:79:THR:HG23	1:A:81:GLN:H	1.77	0.48
1:C:400:THR:HG22	1:C:401:GLY:N	2.28	0.48
1:E:451:ARG:HG2	1:E:451:ARG:NH1	2.29	0.48
1:F:118:VAL:HG12	1:F:153:GLN:HE22	1.78	0.48
1:F:484:ARG:HH11	1:F:484:ARG:HB3	1.78	0.48
1:A:131:ASN:HD21	1:A:135:GLN:HE22	1.61	0.48
1:B:430:ILE:O	1:B:433:ILE:N	2.36	0.48
1:B:90:PHE:HB2	1:B:92:TRP:NE1	2.29	0.48
1:D:483:PHE:HB2	1:D:489:ILE:CD1	2.44	0.48
1:D:74:VAL:HG22	1:D:106:LEU:HD23	1.96	0.48
1:F:208:ARG:NH2	1:F:221:GLU:OE2	2.47	0.48
1:B:354:ALA:HB1	1:B:358:ASP:HB2	1.96	0.48
1:B:492:GLY:O	1:B:494:PRO:HD3	2.14	0.48
1:C:54:LEU:HD13	1:C:90:PHE:CZ	2.49	0.48
1:E:392:PHE:HE2	1:E:430:ILE:HD11	1.78	0.48
1:E:53:THR:HG1	2:E:903:ATP:PG	2.37	0.48
1:B:446:ARG:HE	1:B:496:ARG:HH12	1.61	0.48
1:C:311:ARG:HB3	1:C:370:PHE:CE2	2.49	0.48
1:E:334:ASP:OD1	1:E:336:GLU:HB2	2.14	0.48
1:F:247:PHE:CZ	1:F:361:GLN:HG3	2.44	0.48
1:C:248:PRO:HB2	1:C:251:ALA:HB3	1.96	0.48
1:C:348:CYS:O	1:C:349:ALA:HB2	2.13	0.48
1:C:418:GLN:HB2	1:D:423:HIS:O	2.13	0.48
1:E:364:LYS:O	1:E:368:ASN:ND2	2.47	0.48
1:E:88:ARG:HH11	1:E:88:ARG:HG2	1.79	0.48
1:A:142:VAL:O	1:A:178:THR:HA	2.14	0.47
1:B:267:VAL:CG1	1:B:270:LEU:HB2	2.44	0.47
1:B:347:VAL:O	1:B:348:CYS:HB2	2.14	0.47
1:B:441:GLN:HE22	1:B:490:ILE:HA	1.79	0.47
1:E:287:THR:HG21	1:E:425:ILE:O	2.14	0.47
1:F:144:ILE:HB	1:F:180:MET:HG2	1.95	0.47
1:B:54:LEU:CD2	1:B:244:ILE:HG13	2.44	0.47
1:C:387:VAL:CG1	1:C:391:ALA:HB3	2.44	0.47
1:C:440:LEU:HD21	1:C:453:ILE:HG12	1.96	0.47
1:E:247:PHE:HD2	1:E:364:LYS:NZ	2.10	0.47
1:E:334:ASP:OD1	1:E:336:GLU:N	2.47	0.47
1:F:134:ILE:HA	1:F:139:ALA:HB3	1.97	0.47
1:B:93:ASP:OD2	1:B:96:LYS:HB2	2.14	0.47
1:C:425:ILE:HG22	1:C:426:THR:HG23	1.95	0.47

Continued on next page...

Continued from previous page...

Atom-1	Atom-2	Interatomic distance (Å)	Clash overlap (Å)
1:C:80:PRO:O	1:C:84:ILE:HG13	2.14	0.47
1:D:249:LEU:HD12	1:D:394:GLN:OE1	2.14	0.47
1:F:313:ILE:HD11	1:F:372:PRO:HG2	1.96	0.47
1:C:150:VAL:HG13	1:C:151:PHE:H	1.75	0.47
1:C:24:MET:HB2	1:C:62:ASN:HD22	1.77	0.47
1:D:90:PHE:HA	1:D:241:ASP:O	2.15	0.47
1:A:458:MET:O	2:F:901:ATP:H3'	2.14	0.47
1:A:64:ILE:HG21	1:A:97:LEU:HD22	1.95	0.47
1:B:216:ARG:NE	1:C:221:GLU:OE1	2.32	0.47
1:C:352:GLU:OE2	1:C:385:ARG:HD2	2.15	0.47
1:D:131:ASN:OD1	1:D:174:ILE:HD13	2.14	0.47
1:D:393:ARG:HH21	1:D:429:HIS:HB2	1.79	0.47
1:F:340:ARG:C	1:F:342:ASN:N	2.68	0.47
1:A:169:ALA:O	1:A:173:GLN:HG3	2.15	0.47
1:A:21:MET:HE3	1:A:59:PHE:CZ	2.49	0.47
1:A:299:SER:O	1:A:333:MET:HE1	2.14	0.47
1:B:440:LEU:CD2	1:B:453:ILE:HG12	2.44	0.47
1:C:264:SER:O	1:C:374:ARG:NH2	2.47	0.47
1:D:191:ILE:HD12	1:D:198:GLU:CG	2.37	0.47
1:D:215:ARG:NH2	1:E:234:GLU:O	2.47	0.47
1:D:486:PHE:CE2	1:D:496:ARG:HD3	2.50	0.47
1:A:211:LEU:HD13	1:A:216:ARG:NE	2.29	0.47
1:C:357:GLU:HG3	1:C:358:ASP:N	2.30	0.47
1:C:76:PHE:O	1:C:109:SER:HA	2.15	0.47
1:E:99:ASP:C	1:E:101:GLY:H	2.18	0.47
1:F:387:VAL:HG12	1:F:388:SER:O	2.14	0.47
1:F:61:TYR:CE2	1:F:65:ILE:HG13	2.49	0.47
1:A:24:MET:HB2	1:A:62:ASN:ND2	2.15	0.47
1:A:73:PHE:HE2	1:A:83:ILE:HD13	1.78	0.47
1:B:182:THR:HG21	1:B:192:ALA:CB	2.43	0.47
1:B:182:THR:HG22	1:B:183:GLU:N	2.30	0.47
1:B:203:ASN:HB3	1:B:225:LEU:HD23	1.97	0.47
1:D:268:VAL:O	1:D:271:ASP:HB2	2.15	0.47
1:F:117:VAL:HA	1:F:154:TYR:OH	2.14	0.47
1:F:238:THR:HG22	1:F:239:ILE:N	2.29	0.47
1:F:357:GLU:CG	1:F:358:ASP:N	2.78	0.47
1:A:224:LYS:HB2	2:F:903:ATP:H3'	1.97	0.47
1:A:308:ASN:O	1:A:310:GLU:HG3	2.15	0.47
1:B:191:ILE:HD12	1:B:198:GLU:CG	2.42	0.47
1:C:148:THR:CG2	1:C:193:ARG:HD2	2.45	0.47
1:E:24:MET:HG3	1:E:66:GLU:HG3	1.97	0.47

Continued on next page...

Continued from previous page...

Atom-1	Atom-2	Interatomic distance (Å)	Clash overlap (Å)
1:B:435:ASP:HA	1:B:459:ARG:HD2	1.97	0.47
1:C:248:PRO:O	1:C:250:GLY:N	2.48	0.47
1:E:357:GLU:CD	4:E:529:HOH:O	2.53	0.47
1:E:383:LEU:HD13	1:E:395:PHE:CE2	2.50	0.47
1:F:178:THR:HG22	1:F:179:VAL:N	2.30	0.47
1:C:315:PHE:CZ	1:C:363:ILE:HG23	2.50	0.47
1:D:462:TRP:O	1:D:463:HIS:CG	2.68	0.47
1:E:148:THR:HG21	1:E:193:ARG:HD2	1.97	0.47
1:F:203:ASN:CB	1:F:225:LEU:HD23	2.26	0.47
1:A:311:ARG:HD2	1:A:371:LYS:HD3	1.93	0.46
1:C:471:MET:CG	1:C:478:ASP:HB3	2.42	0.46
1:D:40:ARG:HG2	1:D:172:LYS:HE3	1.97	0.46
1:E:202:ASP:HA	1:E:226:ARG:HD2	1.97	0.46
1:E:392:PHE:O	1:E:395:PHE:HB3	2.15	0.46
1:F:264:SER:HA	1:F:271:ASP:OD1	2.15	0.46
1:F:238:THR:HB	1:F:361:GLN:HE22	1.80	0.46
1:B:98:VAL:HA	1:B:103:LEU:O	2.14	0.46
1:B:262:ARG:HH22	1:B:461:SER:CB	2.17	0.46
1:A:447:GLY:HA2	1:B:489:ILE:HD12	1.97	0.46
1:B:81:GLN:H	1:B:81:GLN:NE2	2.12	0.46
1:D:451:ARG:N	1:D:451:ARG:HD2	2.30	0.46
1:E:23:THR:O	1:E:24:MET:HB2	2.14	0.46
1:E:323:GLN:HG2	1:E:327:ASN:HD21	1.78	0.46
1:A:344:LEU:HD22	1:A:345:LYS:H	1.79	0.46
1:B:104:PHE:HD2	1:B:133:ALA:HB1	1.80	0.46
1:B:161:ARG:HD2	1:B:196:VAL:HG13	1.98	0.46
1:C:62:ASN:O	1:C:66:GLU:HB2	2.16	0.46
1:D:184:ARG:HG2	1:D:191:ILE:O	2.15	0.46
1:E:371:LYS:N	1:E:372:PRO:HD3	2.31	0.46
1:E:441:GLN:NE2	1:E:490:ILE:HD13	2.27	0.46
1:E:61:TYR:CE2	1:E:65:ILE:HG13	2.50	0.46
1:F:378:ASP:OD1	1:F:413:THR:HG21	2.15	0.46
1:A:390:ASN:OD1	1:F:386:GLY:HA2	2.15	0.46
1:A:267:VAL:HG22	1:A:300:ARG:HG2	1.97	0.46
1:A:291:GLY:N	2:A:901:ATP:O2B	2.49	0.46
1:B:356:LEU:HD22	1:B:387:VAL:HG11	1.97	0.46
1:B:85:LYS:NZ	1:C:16:GLN:O	2.45	0.46
1:C:182:THR:HG21	1:C:192:ALA:HB1	1.97	0.46
1:D:127:ILE:HD11	1:D:167:LEU:HA	1.97	0.46
1:F:18:ILE:HG13	1:F:227:GLY:HA3	1.97	0.46
1:F:451:ARG:HB3	1:F:470:PHE:CE2	2.51	0.46

Continued on next page...

Continued from previous page...

Atom-1	Atom-2	Interatomic distance (Å)	Clash overlap (Å)
1:D:256:GLN:N	1:D:256:GLN:OE1	2.48	0.46
1:D:79:THR:HG21	1:D:81:GLN:HG2	1.97	0.46
1:F:248:PRO:HB2	1:F:251:ALA:CB	2.46	0.46
1:A:264:SER:HB3	1:A:304:ASN:ND2	2.30	0.46
1:B:264:SER:HB3	1:B:304:ASN:HD21	1.81	0.46
1:C:273:MET:CE	1:C:468:ARG:HD2	2.46	0.46
1:D:255:THR:HG22	1:D:255:THR:O	2.16	0.46
1:D:370:PHE:O	1:D:371:LYS:CD	2.63	0.46
1:D:440:LEU:HD21	1:D:453:ILE:HG12	1.98	0.46
1:E:287:THR:CG2	1:E:414:ASN:HD22	2.28	0.46
1:A:16:GLN:O	1:A:17:ALA:O	2.33	0.46
1:A:220:LEU:HD23	1:A:221:GLU:N	2.31	0.46
1:A:65:ILE:O	1:A:65:ILE:HG22	2.15	0.46
1:C:111:ASP:C	1:C:113:GLU:H	2.19	0.46
1:D:325:LEU:HD23	1:D:335:PHE:CB	2.43	0.46
1:D:387:VAL:HG12	1:D:388:SER:O	2.16	0.46
1:F:356:LEU:CD1	1:F:387:VAL:HG21	2.45	0.46
1:F:451:ARG:NH1	1:F:451:ARG:HG2	2.29	0.46
1:A:273:MET:O	1:A:463:HIS:HA	2.15	0.46
1:B:178:THR:HG22	1:B:179:VAL:H	1.81	0.46
1:B:85:LYS:NZ	1:C:14:GLU:HB3	2.31	0.46
1:C:334:ASP:OD1	1:C:336:GLU:HB2	2.15	0.46
1:F:150:VAL:O	1:F:153:GLN:HG3	2.16	0.46
1:F:42:THR:HG23	1:F:203:ASN:HB2	1.97	0.46
1:F:265:SER:O	1:F:301:PHE:HA	2.15	0.46
1:F:94:LEU:HB3	1:F:103:LEU:CD2	2.46	0.46
1:B:90:PHE:HB2	1:B:92:TRP:CD1	2.50	0.46
1:C:295:THR:HG21	1:C:319:GLU:OE2	2.16	0.46
1:C:306:CYS:O	1:C:309:LYS:N	2.48	0.46
1:C:371:LYS:N	1:C:372:PRO:HD3	2.30	0.46
1:C:53:THR:OG1	2:C:903:ATP:O2G	2.33	0.46
1:D:439:LEU:HD12	1:D:440:LEU:H	1.81	0.46
1:D:21:MET:HE3	1:D:59:PHE:CE1	2.51	0.46
1:E:14:GLU:HG3	1:E:16:GLN:N	2.27	0.46
1:E:21:MET:HE1	1:E:177:THR:HB	1.97	0.46
1:F:191:ILE:CB	1:F:198:GLU:CG	2.88	0.46
1:F:209:ASN:HD21	1:F:216:ARG:HB3	1.80	0.46
1:F:469:GLU:HG3	1:F:470:PHE:N	2.30	0.46
1:A:23:THR:C	1:A:25:ILE:H	2.19	0.46
1:C:123:LEU:CD1	1:C:166:ARG:HD2	2.46	0.46
1:C:393:ARG:HH21	1:C:429:HIS:CB	2.15	0.46

Continued on next page...

Continued from previous page...

Atom-1	Atom-2	Interatomic distance (Å)	Clash overlap (Å)
1:C:483:PHE:N	1:C:483:PHE:CD1	2.84	0.46
1:D:150:VAL:CG1	1:D:151:PHE:N	2.78	0.46
1:D:396:VAL:HG11	1:D:430:ILE:HG23	1.98	0.46
1:F:118:VAL:O	1:F:118:VAL:HG22	2.16	0.46
1:F:32:SER:HB3	1:F:222:ILE:CD1	2.46	0.46
1:F:54:LEU:HD13	1:F:90:PHE:CE1	2.51	0.46
1:A:497:ILE:C	1:A:497:ILE:HD12	2.36	0.45
1:B:336:GLU:OE1	1:B:336:GLU:HA	2.17	0.45
1:C:50:THR:HB	1:C:207:LEU:HB3	1.98	0.45
1:C:42:THR:HA	1:C:203:ASN:HB2	1.98	0.45
1:D:484:ARG:HH11	1:D:484:ARG:HB3	1.80	0.45
1:E:487:GLU:O	1:E:488:ARG:CB	2.64	0.45
1:F:123:LEU:O	1:F:123:LEU:HD13	2.15	0.45
1:F:352:GLU:CD	1:F:352:GLU:N	2.69	0.45
1:A:106:LEU:HD11	1:A:129:ARG:NE	2.31	0.45
1:C:317:TYR:CE1	1:C:377:ILE:HG23	2.47	0.45
1:E:248:PRO:O	1:E:251:ALA:N	2.47	0.45
1:F:338:MET:HB3	1:F:344:LEU:HB3	1.99	0.45
1:F:353:SER:O	1:F:354:ALA:CB	2.65	0.45
1:A:292:THR:HB	1:A:440:LEU:HB3	1.98	0.45
1:A:285:LEU:HD12	1:A:412:PHE:O	2.16	0.45
1:B:305:ALA:HB2	1:B:374:ARG:CD	2.33	0.45
1:B:68:ASP:OD1	1:B:102:LYS:NZ	2.44	0.45
1:C:80:PRO:HD2	1:C:81:GLN:NE2	2.31	0.45
1:C:294:LYS:HB2	2:C:901:ATP:O1B	2.17	0.45
1:C:296:LEU:HD21	1:C:477:PRO:HB3	1.99	0.45
1:C:40:ARG:HG2	1:C:172:LYS:HE3	1.97	0.45
1:D:436:THR:HA	1:D:457:LYS:O	2.17	0.45
1:E:18:ILE:HD11	1:E:227:GLY:O	2.16	0.45
1:E:238:THR:HG22	1:E:239:ILE:N	2.32	0.45
1:E:303:GLU:HB2	1:E:333:MET:CE	2.47	0.45
1:A:213:GLY:C	1:A:215:ARG:H	2.20	0.45
1:B:433:ILE:CG2	1:B:433:ILE:O	2.65	0.45
1:B:291:GLY:HA3	1:B:442:TYR:OH	2.16	0.45
1:B:471:MET:HE3	1:B:472:ILE:C	2.37	0.45
1:D:400:THR:HG22	1:D:401:GLY:N	2.32	0.45
1:E:344:LEU:HD11	1:E:346:ILE:CG1	2.44	0.45
1:E:346:ILE:HG22	1:E:347:VAL:N	2.32	0.45
1:F:21:MET:HE3	1:F:59:PHE:HE1	1.81	0.45
1:A:289:ALA:HB2	1:A:419:PHE:HA	1.98	0.45
1:B:273:MET:C	1:B:275:GLY:H	2.18	0.45

Continued on next page...

Continued from previous page...

Atom-1	Atom-2	Interatomic distance (Å)	Clash overlap (Å)
1:C:118:VAL:O	1:C:118:VAL:HG12	2.16	0.45
1:C:21:MET:SD	1:C:141:ARG:NE	2.89	0.45
1:E:284:ILE:H	1:E:284:ILE:HD12	1.82	0.45
1:F:211:LEU:O	1:F:212:GLU:HB3	2.16	0.45
1:F:392:PHE:CE2	1:F:430:ILE:HD11	2.51	0.45
1:F:84:ILE:HA	1:F:94:LEU:HD12	1.98	0.45
1:A:445:ILE:CD1	1:A:483:PHE:CE2	2.99	0.45
1:A:483:PHE:HB3	1:A:486:PHE:CD1	2.52	0.45
1:B:289:ALA:HB2	1:B:419:PHE:HA	1.99	0.45
1:B:490:ILE:HD13	1:B:490:ILE:HA	1.87	0.45
1:D:486:PHE:HE2	1:D:496:ARG:HD3	1.81	0.45
1:E:184:ARG:HG2	1:E:191:ILE:O	2.17	0.45
1:E:360:LEU:HD22	1:E:364:LYS:HE3	1.99	0.45
1:E:287:THR:HG22	1:E:414:ASN:HD22	1.82	0.45
1:F:136:LYS:HD3	1:F:137:TYR:CE1	2.50	0.45
1:A:211:LEU:HD12	1:A:215:ARG:O	2.17	0.45
1:A:32:SER:O	1:A:33:HIS:HB2	2.17	0.45
1:B:344:LEU:HD11	1:B:346:ILE:HG13	1.98	0.45
1:F:106:LEU:CD1	1:F:129:ARG:CZ	2.94	0.45
1:F:121:PHE:O	1:F:125:ALA:N	2.43	0.45
1:C:208:ARG:NH2	1:C:221:GLU:OE2	2.50	0.45
1:D:70:PRO:HB2	1:D:139:ALA:HA	1.99	0.45
1:E:399:VAL:HG11	1:E:412:PHE:HE2	1.82	0.45
1:A:302:VAL:HG13	1:A:344:LEU:HD23	1.99	0.45
1:B:151:PHE:C	1:B:153:GLN:H	2.21	0.45
1:B:247:PHE:HD2	1:B:364:LYS:HZ2	1.65	0.45
1:C:294:LYS:HB2	1:C:294:LYS:HE2	1.79	0.45
1:C:451:ARG:NH1	1:C:451:ARG:HG2	2.30	0.45
1:D:123:LEU:HA	1:D:123:LEU:HD22	1.79	0.45
1:D:14:GLU:CG	1:D:15:HIS:N	2.80	0.45
1:D:291:GLY:CA	2:D:901:ATP:O2B	2.65	0.45
1:E:153:GLN:C	1:F:158:SER:HB2	2.37	0.45
1:E:435:ASP:HA	1:E:459:ARG:HD2	1.99	0.45
1:F:117:VAL:O	1:F:118:VAL:HB	2.17	0.45
2:E:903:ATP:C2	1:F:229:SER:HB3	2.52	0.45
1:F:286:ALA:HA	1:F:438:ILE:O	2.17	0.45
1:F:471:MET:O	1:F:471:MET:HE2	2.17	0.45
1:A:266:GLY:HA3	1:A:300:ARG:HG3	1.99	0.44
1:B:211:LEU:O	1:B:212:GLU:CB	2.66	0.44
1:C:461:SER:OG	1:C:462:TRP:N	2.48	0.44
1:D:463:HIS:O	1:D:465:LYS:NZ	2.44	0.44

Continued on next page...

Continued from previous page...

Atom-1	Atom-2	Interatomic distance (Å)	Clash overlap (Å)
1:D:92:TRP:HA	1:D:92:TRP:HE3	1.82	0.44
1:E:185:ILE:HD11	1:E:193:ARG:NH1	2.32	0.44
1:E:80:PRO:HD2	1:E:81:GLN:NE2	2.32	0.44
1:B:357:GLU:HG3	1:B:358:ASP:N	2.32	0.44
1:C:211:LEU:O	1:C:212:GLU:CB	2.60	0.44
1:D:15:HIS:O	1:D:16:GLN:HG3	2.17	0.44
1:D:344:LEU:HD13	1:D:344:LEU:C	2.37	0.44
1:E:283:ILE:HD12	1:E:400:THR:HG23	1.98	0.44
1:F:329:TYR:O	1:F:332:GLY:N	2.46	0.44
1:B:18:ILE:CG1	1:B:228:THR:HG23	2.47	0.44
1:B:269:ARG:O	1:B:273:MET:HG3	2.16	0.44
1:B:61:TYR:CZ	1:B:92:TRP:CE3	3.06	0.44
1:C:186:GLU:OE1	1:C:188:TYR:N	2.35	0.44
1:C:387:VAL:HG12	1:C:388:SER:O	2.16	0.44
1:D:203:ASN:HB3	1:D:225:LEU:CD2	2.47	0.44
1:D:208:ARG:NE	1:D:234:GLU:OE2	2.50	0.44
1:E:147:VAL:HG23	1:E:148:THR:N	2.31	0.44
1:E:153:GLN:O	1:F:158:SER:HB2	2.18	0.44
1:F:270:LEU:O	1:F:273:MET:HB2	2.16	0.44
1:A:273:MET:SD	1:A:468:ARG:HD2	2.57	0.44
1:B:64:ILE:HD11	1:B:103:LEU:HB2	1.99	0.44
1:B:335:PHE:HA	1:B:338:MET:HG3	1.99	0.44
1:C:174:ILE:HG22	1:C:174:ILE:O	2.18	0.44
1:D:151:PHE:CZ	1:D:160:VAL:HG13	2.53	0.44
1:D:191:ILE:CD1	1:D:223:LEU:HD12	2.47	0.44
1:E:317:TYR:HB3	1:E:351:PRO:HG3	2.00	0.44
1:E:396:VAL:HG11	1:E:430:ILE:HG23	2.00	0.44
1:E:445:ILE:O	1:E:446:ARG:HB2	2.17	0.44
1:F:148:THR:HG21	1:F:183:GLU:CG	2.47	0.44
1:A:332:GLY:O	1:A:333:MET:C	2.54	0.44
1:A:433:ILE:HG22	1:A:433:ILE:O	2.17	0.44
1:C:124:SER:O	1:C:128:GLU:HG3	2.18	0.44
1:C:164:LEU:HD23	1:C:164:LEU:HA	1.79	0.44
1:D:247:PHE:CZ	1:D:361:GLN:HB2	2.53	0.44
1:D:419:PHE:O	1:D:420:MET:HB2	2.17	0.44
1:E:64:ILE:CG2	1:E:102:LYS:HB3	2.46	0.44
1:E:130:ILE:O	1:E:134:ILE:HG13	2.17	0.44
1:E:350:TYR:CE2	1:F:397:ILE:HG23	2.53	0.44
1:F:380:LEU:HB3	1:F:392:PHE:HZ	1.82	0.44
1:F:294:LYS:HD3	2:F:901:ATP:O1B	2.17	0.44
1:A:262:ARG:NH2	1:A:461:SER:HB2	2.33	0.44

Continued on next page...

Continued from previous page...

Atom-1	Atom-2	Interatomic distance (Å)	Clash overlap (Å)
1:A:36:LEU:HD12	1:A:59:PHE:CE1	2.53	0.44
1:A:393:ARG:O	1:A:397:ILE:HG12	2.18	0.44
1:A:400:THR:HG22	1:A:401:GLY:N	2.32	0.44
1:B:153:GLN:O	1:B:154:TYR:HB3	2.17	0.44
1:B:191:ILE:HD11	1:B:223:LEU:CD1	2.46	0.44
1:C:287:THR:HG22	1:C:288:GLY:N	2.32	0.44
1:D:21:MET:HE2	1:D:177:THR:HG21	1.99	0.44
1:D:269:ARG:O	1:D:273:MET:HG3	2.17	0.44
1:E:38:ILE:HG22	1:E:39:GLY:N	2.33	0.44
1:F:344:LEU:HD13	1:F:344:LEU:C	2.37	0.44
1:A:127:ILE:HD13	1:A:170:ARG:CB	2.48	0.44
1:A:371:LYS:O	1:A:371:LYS:HD3	2.17	0.44
1:A:486:PHE:CD2	1:A:494:PRO:HB2	2.47	0.44
1:B:123:LEU:HG	1:B:163:GLU:OE2	2.17	0.44
1:B:334:ASP:OD1	1:B:336:GLU:N	2.51	0.44
1:D:18:ILE:HD12	1:D:227:GLY:HA3	2.00	0.44
1:D:441:GLN:NE2	1:D:490:ILE:HD13	2.31	0.44
1:E:123:LEU:CD1	1:E:163:GLU:OE2	2.64	0.44
1:E:167:LEU:HG	1:E:171:LEU:HD12	1.99	0.44
1:E:334:ASP:O	1:E:338:MET:HG2	2.16	0.44
1:E:64:ILE:HD12	1:E:97:LEU:HD13	2.00	0.44
1:A:21:MET:HE2	1:A:177:THR:CG2	2.47	0.44
1:D:484:ARG:NH1	1:D:484:ARG:HB3	2.32	0.44
1:E:126:LEU:O	1:E:129:ARG:HB2	2.17	0.44
1:E:365:SER:HA	1:E:368:ASN:ND2	2.33	0.44
1:F:452:ALA:HA	1:F:469:GLU:HA	1.99	0.44
1:C:203:ASN:CB	1:C:225:LEU:HD23	2.47	0.44
1:C:397:ILE:CD1	1:C:433:ILE:HD13	2.47	0.44
1:D:453:ILE:HB	1:D:470:PHE:CD2	2.52	0.44
1:E:332:GLY:O	1:E:333:MET:O	2.36	0.44
1:F:164:LEU:HD11	1:F:197:GLU:HG3	2.00	0.44
1:C:311:ARG:HD2	1:C:371:LYS:HD3	1.97	0.43
1:C:214:GLU:HG2	1:D:234:GLU:OE1	2.17	0.43
1:D:367:ILE:HG23	1:D:372:PRO:HD2	2.00	0.43
1:F:118:VAL:CG1	1:F:153:GLN:HE22	2.31	0.43
1:F:164:LEU:CD1	1:F:197:GLU:HG3	2.48	0.43
1:F:344:LEU:HD11	1:F:346:ILE:CG1	2.48	0.43
1:A:18:ILE:CD1	1:A:40:ARG:HH12	2.31	0.43
1:B:356:LEU:HD13	1:B:387:VAL:HG21	1.98	0.43
1:D:21:MET:CE	1:D:59:PHE:CZ	3.01	0.43
1:E:333:MET:HB2	1:E:333:MET:HE2	1.78	0.43

Continued on next page...

Continued from previous page...

Atom-1	Atom-2	Interatomic distance (Å)	Clash overlap (Å)
2:E:901:ATP:C2	1:F:462:TRP:HA	2.53	0.43
1:F:143:SER:HA	1:F:179:VAL:O	2.18	0.43
1:E:323:GLN:HE21	1:F:459:ARG:HD3	1.83	0.43
1:A:421:GLY:O	1:A:422:ALA:C	2.57	0.43
1:A:457:LYS:HB2	2:F:901:ATP:O3'	2.19	0.43
1:B:302:VAL:CG1	1:B:344:LEU:HD23	2.48	0.43
1:B:295:THR:HG21	1:B:319:GLU:OE2	2.18	0.43
1:C:123:LEU:O	1:C:124:SER:C	2.56	0.43
1:C:283:ILE:HD12	1:C:404:LYS:HE3	1.99	0.43
1:C:88:ARG:HG2	1:C:88:ARG:NH1	2.33	0.43
1:F:150:VAL:CG1	1:F:151:PHE:N	2.81	0.43
1:B:187:GLU:OE2	1:B:208:ARG:HA	2.17	0.43
1:B:161:ARG:CB	1:B:196:VAL:HG11	2.48	0.43
1:B:292:THR:HB	1:B:440:LEU:HB3	2.01	0.43
1:C:248:PRO:C	1:C:250:GLY:H	2.21	0.43
1:D:151:PHE:O	1:D:153:GLN:N	2.47	0.43
1:F:194:TYR:N	1:F:194:TYR:CD1	2.87	0.43
1:E:449:MET:CE	1:F:467:ILE:HD11	2.48	0.43
1:E:495:THR:HG23	1:F:487:GLU:OE2	2.19	0.43
1:A:183:GLU:OE2	1:B:161:ARG:NH2	2.45	0.43
1:A:287:THR:HG23	1:A:414:ASN:ND2	2.12	0.43
1:C:245:ASN:ND2	1:C:247:PHE:CZ	2.86	0.43
1:C:335:PHE:O	1:C:339:GLU:HG3	2.18	0.43
1:D:377:ILE:HD11	1:D:399:VAL:HG11	2.00	0.43
1:F:306:CYS:SG	1:F:344:LEU:HB2	2.58	0.43
1:A:224:LYS:HD3	1:F:49:GLY:CA	2.49	0.43
1:B:219:THR:HA	1:B:235:TYR:O	2.18	0.43
1:E:211:LEU:HD13	1:E:216:ARG:NE	2.34	0.43
1:E:328:ALA:O	1:E:332:GLY:O	2.37	0.43
1:C:102:LYS:HD3	1:C:102:LYS:HA	1.84	0.43
1:C:425:ILE:HD11	1:C:456:PHE:CD2	2.54	0.43
1:D:147:VAL:HG11	1:D:180:MET:CE	2.36	0.43
1:D:31:ILE:HA	1:D:231:MET:SD	2.59	0.43
1:D:79:THR:HG22	1:D:82:ASP:N	2.29	0.43
1:E:217:ARG:HE	1:E:236:PRO:HB3	1.84	0.43
1:E:31:ILE:HG22	1:E:222:ILE:CD1	2.48	0.43
1:F:332:GLY:O	1:F:333:MET:C	2.56	0.43
1:B:298:VAL:HG13	1:B:376:ALA:HB1	2.01	0.43
1:D:269:ARG:HH11	1:D:269:ARG:HG3	1.83	0.43
1:E:163:GLU:HA	1:E:163:GLU:OE2	2.18	0.43
1:E:273:MET:O	1:E:463:HIS:HA	2.18	0.43

Continued on next page...

Continued from previous page...

Atom-1	Atom-2	Interatomic distance (Å)	Clash overlap (Å)
1:E:484:ARG:HH11	1:E:484:ARG:HB3	1.83	0.43
1:F:471:MET:HG3	1:F:478:ASP:HB3	1.99	0.43
1:A:471:MET:HB3	1:A:480:LYS:NZ	2.34	0.43
1:A:484:ARG:HG2	1:A:484:ARG:O	2.19	0.43
1:C:384:ALA:HB2	1:C:392:PHE:CE1	2.54	0.43
1:D:447:GLY:HA2	1:E:489:ILE:CD1	2.48	0.43
1:A:471:MET:HB3	1:A:480:LYS:HZ1	1.83	0.43
1:C:122:ASP:O	1:C:124:SER:N	2.51	0.43
1:C:249:LEU:HD12	1:C:394:GLN:OE1	2.19	0.43
1:D:183:GLU:HB2	1:E:199:PHE:CE1	2.54	0.43
1:D:347:VAL:HG12	1:D:348:CYS:N	2.34	0.43
1:D:347:VAL:O	1:D:348:CYS:CB	2.65	0.43
1:D:92:TRP:HA	1:D:92:TRP:CE3	2.54	0.43
1:E:425:ILE:HG22	1:E:426:THR:HG23	2.01	0.43
1:F:88:ARG:HH11	1:F:88:ARG:HG2	1.84	0.43
1:A:288:GLY:O	1:A:415:THR:HA	2.19	0.42
1:B:267:VAL:HG12	1:B:270:LEU:HB2	2.01	0.42
1:B:292:THR:HB	1:B:440:LEU:CB	2.49	0.42
1:C:66:GLU:HB3	1:C:67:PHE:CE1	2.54	0.42
1:C:61:TYR:CE1	1:C:97:LEU:HD11	2.54	0.42
1:D:214:GLU:HG2	1:E:234:GLU:OE1	2.19	0.42
1:E:148:THR:HG23	1:E:193:ARG:HD2	2.01	0.42
1:E:21:MET:HE3	1:E:59:PHE:CZ	2.53	0.42
1:F:116:GLU:O	1:F:117:VAL:HB	2.19	0.42
1:F:150:VAL:HG13	1:F:151:PHE:H	1.84	0.42
1:F:269:ARG:HB3	1:F:479:ILE:HD12	2.01	0.42
1:F:333:MET:HB2	1:F:333:MET:HE3	1.90	0.42
1:A:488:ARG:HE	1:F:488:ARG:HH12	1.66	0.42
1:A:279:PHE:HB2	1:A:282:SER:HB3	2.00	0.42
1:A:309:LYS:HA	1:A:343:LEU:HD13	2.01	0.42
1:A:65:ILE:O	1:A:65:ILE:CG2	2.67	0.42
1:B:484:ARG:NH1	1:B:484:ARG:HB3	2.33	0.42
1:B:54:LEU:HD13	1:B:90:PHE:CZ	2.54	0.42
1:C:182:THR:CG2	1:C:183:GLU:N	2.81	0.42
1:C:209:ASN:HA	1:C:209:ASN:HD22	1.63	0.42
1:E:14:GLU:CG	1:E:16:GLN:HB2	2.49	0.42
1:E:191:ILE:HG21	1:E:198:GLU:HG3	2.02	0.42
1:F:240:THR:C	1:F:242:HIS:N	2.72	0.42
1:F:356:LEU:HD13	1:F:387:VAL:HG21	2.01	0.42
1:B:344:LEU:HD22	1:B:345:LYS:H	1.83	0.42
1:D:451:ARG:CG	1:D:451:ARG:NH1	2.82	0.42

Continued on next page...

Continued from previous page...

Atom-1	Atom-2	Interatomic distance (Å)	Clash overlap (Å)
1:D:462:TRP:CD2	1:D:463:HIS:N	2.87	0.42
2:D:903:ATP:O3G	2:D:903:ATP:O2A	2.36	0.42
1:E:203:ASN:HA	1:E:224:LYS:O	2.19	0.42
1:E:347:VAL:O	1:E:348:CYS:CB	2.67	0.42
1:E:80:PRO:HD2	1:E:81:GLN:HE22	1.84	0.42
1:F:148:THR:CG2	1:F:193:ARG:HD2	2.49	0.42
1:F:16:GLN:HE22	1:F:33:HIS:CB	2.32	0.42
1:A:420:MET:HG2	1:A:492:GLY:HA3	2.01	0.42
1:B:24:MET:HB2	1:B:62:ASN:HB3	2.01	0.42
1:B:284:ILE:N	1:B:284:ILE:HD12	2.34	0.42
1:B:273:MET:HE1	1:B:468:ARG:HD2	2.00	0.42
1:C:111:ASP:O	1:C:113:GLU:N	2.50	0.42
1:C:208:ARG:O	1:C:218:ARG:HA	2.18	0.42
1:E:400:THR:HG22	1:E:401:GLY:N	2.34	0.42
1:A:266:GLY:C	1:A:300:ARG:HG3	2.39	0.42
1:A:93:ASP:OD2	1:A:96:LYS:HB2	2.19	0.42
1:C:446:ARG:HG2	1:C:496:ARG:NH1	2.35	0.42
1:D:461:SER:OG	1:D:462:TRP:N	2.52	0.42
1:E:106:LEU:CD1	1:E:129:ARG:NH2	2.83	0.42
1:B:311:ARG:HA	1:B:343:LEU:O	2.20	0.42
1:C:36:LEU:HD12	1:C:59:PHE:CE1	2.54	0.42
1:C:451:ARG:HB3	1:C:470:PHE:CE2	2.54	0.42
1:D:109:SER:HA	1:D:110:PRO:HD3	1.89	0.42
1:D:121:PHE:CD1	1:D:121:PHE:N	2.87	0.42
1:D:191:ILE:HD11	1:D:223:LEU:CD1	2.50	0.42
1:D:396:VAL:HG11	1:D:430:ILE:HG21	2.01	0.42
1:E:370:PHE:O	1:E:371:LYS:HD3	2.20	0.42
1:F:153:GLN:O	1:F:154:TYR:HB3	2.20	0.42
1:F:375:ILE:O	1:F:410:GLY:HA2	2.19	0.42
1:F:73:PHE:HE2	1:F:75:THR:HB	1.84	0.42
1:B:25:ILE:HG12	1:B:58:GLN:HE21	1.85	0.42
1:C:148:THR:HA	1:C:151:PHE:CE1	2.55	0.42
1:C:385:ARG:HA	1:D:393:ARG:NH1	2.35	0.42
1:D:62:ASN:O	1:D:66:GLU:HB2	2.20	0.42
1:E:150:VAL:CG1	1:E:151:PHE:H	2.33	0.42
1:E:231:MET:HB3	1:E:235:TYR:OH	2.20	0.42
1:E:335:PHE:HA	1:E:338:MET:HG3	2.02	0.42
1:E:446:ARG:HH21	1:E:496:ARG:NH2	2.17	0.42
1:F:347:VAL:O	1:F:348:CYS:CB	2.67	0.42
2:A:901:ATP:H3'	1:B:458:MET:O	2.20	0.42
1:B:446:ARG:HH21	1:B:496:ARG:NH1	2.18	0.42

Continued on next page...

Continued from previous page...

Atom-1	Atom-2	Interatomic distance (Å)	Clash overlap (Å)
1:B:57:ILE:HG22	1:B:58:GLN:N	2.34	0.42
1:E:118:VAL:O	1:E:118:VAL:HG12	2.20	0.42
1:E:120:GLY:O	1:E:121:PHE:C	2.58	0.42
1:E:211:LEU:HA	1:E:216:ARG:HD3	2.01	0.42
1:E:211:LEU:O	1:E:212:GLU:HB3	2.19	0.42
1:F:483:PHE:HB3	1:F:486:PHE:CD1	2.55	0.42
1:B:24:MET:HG3	1:B:66:GLU:HG3	2.02	0.42
1:B:290:THR:HG22	2:B:901:ATP:O1G	2.20	0.42
1:B:287:THR:HG23	1:B:414:ASN:HD22	1.84	0.42
1:C:360:LEU:HD22	1:C:364:LYS:HE3	2.00	0.42
1:C:489:ILE:C	1:C:491:SER:N	2.72	0.42
1:D:121:PHE:O	1:D:122:ASP:O	2.38	0.42
1:D:144:ILE:HD12	1:D:180:MET:HG2	2.02	0.42
1:F:191:ILE:CB	1:F:198:GLU:HG3	2.49	0.42
1:A:36:LEU:HA	1:A:37:PRO:HD3	1.85	0.42
1:B:21:MET:CE	1:B:177:THR:HG21	2.50	0.42
1:C:370:PHE:HD2	1:C:372:PRO:HG3	1.83	0.42
1:C:484:ARG:NH1	1:C:484:ARG:HB3	2.34	0.42
1:D:191:ILE:HD11	1:D:223:LEU:HD12	2.02	0.42
1:E:164:LEU:HD23	1:E:164:LEU:HA	1.79	0.42
1:E:23:THR:HB	1:E:25:ILE:HG13	2.02	0.42
1:E:451:ARG:NH1	1:E:472:ILE:HD12	2.35	0.42
1:E:79:THR:HG23	1:E:81:GLN:N	2.32	0.42
1:B:150:VAL:CG1	1:B:151:PHE:H	2.33	0.41
1:B:52:LYS:HE3	2:B:903:ATP:O1B	2.19	0.41
1:C:164:LEU:HB3	1:C:200:VAL:HG11	2.02	0.41
1:C:248:PRO:O	1:C:251:ALA:N	2.41	0.41
1:D:146:SER:H	1:D:181:THR:CG2	2.31	0.41
1:C:449:MET:HE2	1:D:467:ILE:HD11	1.95	0.41
1:E:430:ILE:O	1:E:432:ALA:N	2.53	0.41
1:E:54:LEU:HD13	1:E:90:PHE:CE1	2.55	0.41
1:F:118:VAL:O	1:F:122:ASP:CG	2.58	0.41
1:F:484:ARG:CB	1:F:484:ARG:NH1	2.83	0.41
1:A:24:MET:HB2	1:A:62:ASN:HB3	2.02	0.41
1:A:370:PHE:O	1:A:371:LYS:CD	2.69	0.41
1:C:21:MET:HB2	1:C:38:ILE:HG12	2.01	0.41
1:D:211:LEU:O	1:D:215:ARG:O	2.37	0.41
1:E:387:VAL:HG12	1:E:388:SER:N	2.34	0.41
1:E:431:SEP:C	1:E:434:THR:HG22	2.48	0.41
1:F:191:ILE:HB	1:F:198:GLU:HG2	1.96	0.41
1:F:93:ASP:HA	4:F:523:HOH:O	2.18	0.41

Continued on next page...

Continued from previous page...

Atom-1	Atom-2	Interatomic distance (Å)	Clash overlap (Å)
1:A:161:ARG:HD2	1:A:196:VAL:HG13	2.01	0.41
1:A:45:SER:HA	1:A:182:THR:O	2.21	0.41
1:A:87:ALA:HB1	1:A:92:TRP:HB2	2.02	0.41
1:B:38:ILE:HA	1:B:177:THR:CG2	2.50	0.41
1:B:211:LEU:HD13	1:B:216:ARG:NE	2.35	0.41
1:B:334:ASP:O	1:B:338:MET:HG2	2.20	0.41
1:C:296:LEU:CD2	1:C:477:PRO:HB3	2.50	0.41
1:D:220:LEU:HD13	1:D:246:ILE:HD11	2.02	0.41
1:D:49:GLY:HA2	2:D:903:ATP:O2B	2.20	0.41
1:E:146:SER:H	1:E:181:THR:HB	1.84	0.41
1:E:419:PHE:O	1:E:420:MET:O	2.39	0.41
1:E:392:PHE:CE2	1:E:430:ILE:HD11	2.55	0.41
2:E:903:ATP:O1G	1:F:224:LYS:NZ	2.54	0.41
1:F:260:ASN:HA	1:F:279:PHE:CE2	2.55	0.41
1:A:397:ILE:HG23	1:F:350:TYR:CE2	2.56	0.41
1:A:249:LEU:CD1	1:A:394:GLN:HG2	2.51	0.41
1:B:257:ARG:NH2	1:B:407:GLU:HG2	2.36	0.41
1:B:453:ILE:CD1	1:B:454:ASN:N	2.82	0.41
1:C:64:ILE:HD11	1:C:103:LEU:HB2	2.01	0.41
1:F:203:ASN:HB3	1:F:225:LEU:CD2	2.27	0.41
1:A:164:LEU:HA	1:A:164:LEU:HD23	1.90	0.41
1:B:70:PRO:HA	1:B:102:LYS:O	2.20	0.41
1:B:161:ARG:HB2	1:B:196:VAL:CG1	2.49	0.41
1:B:279:PHE:HE1	1:B:461:SER:H	1.67	0.41
1:C:269:ARG:NE	4:C:526:HOH:O	2.49	0.41
1:D:14:GLU:CG	1:D:15:HIS:H	2.33	0.41
1:D:468:ARG:NH1	1:D:468:ARG:HG2	2.35	0.41
1:E:333:MET:HG3	1:E:333:MET:O	2.21	0.41
1:E:454:ASN:HD21	1:E:456:PHE:HA	1.86	0.41
1:F:298:VAL:HG13	1:F:376:ALA:HB1	2.01	0.41
1:F:344:LEU:CD1	1:F:346:ILE:HG13	2.51	0.41
1:A:192:ALA:HB3	1:A:197:GLU:OE2	2.21	0.41
1:B:313:ILE:HG13	1:B:372:PRO:HG3	2.02	0.41
1:B:299:SER:CB	1:B:333:MET:HE1	2.47	0.41
1:B:471:MET:O	1:B:471:MET:HE2	2.21	0.41
1:B:89:SER:CB	1:C:227:GLY:O	2.64	0.41
1:C:468:ARG:HG2	1:C:468:ARG:NH1	2.36	0.41
1:D:283:ILE:O	1:D:283:ILE:HG22	2.20	0.41
1:D:317:TYR:CZ	1:D:383:LEU:HD11	2.55	0.41
1:D:377:ILE:CD1	1:D:399:VAL:HG11	2.51	0.41
1:E:337:GLU:O	1:E:341:GLN:HG3	2.20	0.41

Continued on next page...

Continued from previous page...

Atom-1	Atom-2	Interatomic distance (Å)	Clash overlap (Å)
1:E:344:LEU:CD1	1:E:346:ILE:HG13	2.48	0.41
1:E:313:ILE:HG13	1:E:372:PRO:CG	2.50	0.41
1:F:151:PHE:C	1:F:153:GLN:H	2.24	0.41
1:F:370:PHE:HD2	1:F:372:PRO:HG3	1.84	0.41
1:F:392:PHE:O	1:F:395:PHE:HB3	2.20	0.41
1:F:79:THR:HA	1:F:80:PRO:HD3	1.98	0.41
1:A:311:ARG:HG2	1:A:343:LEU:HA	2.02	0.41
1:A:89:SER:CB	1:B:227:GLY:O	2.67	0.41
1:B:446:ARG:NE	1:B:496:ARG:HH12	2.18	0.41
1:C:41:SER:OG	1:C:168:VAL:HG13	2.21	0.41
1:C:392:PHE:O	1:C:395:PHE:HB3	2.20	0.41
1:E:146:SER:HA	1:E:181:THR:O	2.21	0.41
1:E:264:SER:HB3	1:E:304:ASN:ND2	2.36	0.41
1:E:300:ARG:HA	1:E:333:MET:HE3	2.03	0.41
1:E:323:GLN:HG2	1:E:327:ASN:ND2	2.36	0.41
1:D:418:GLN:HB2	1:E:423:HIS:O	2.21	0.41
1:E:486:PHE:HA	1:E:495:THR:O	2.20	0.41
1:F:316:ALA:CB	1:F:324:LEU:HD11	2.50	0.41
1:A:23:THR:C	1:A:25:ILE:N	2.73	0.41
1:A:265:SER:O	1:A:301:PHE:HA	2.21	0.41
1:A:335:PHE:O	1:A:338:MET:HB2	2.21	0.41
1:D:453:ILE:HD13	1:D:454:ASN:N	2.35	0.41
1:E:106:LEU:HD11	1:E:129:ARG:CZ	2.50	0.41
1:E:122:ASP:HB3	1:E:123:LEU:H	1.67	0.41
1:E:303:GLU:OE2	1:E:333:MET:HB3	2.20	0.41
1:E:379:SER:HA	1:E:413:THR:HG22	2.03	0.41
1:E:469:GLU:CB	1:E:483:PHE:CZ	3.04	0.41
1:F:211:LEU:HD12	1:F:215:ARG:O	2.20	0.41
1:F:18:ILE:HB	1:F:228:THR:HG23	2.03	0.41
1:A:209:ASN:HD22	1:A:209:ASN:HA	1.71	0.41
1:A:284:ILE:CB	1:A:411:LEU:HD12	2.45	0.41
1:B:61:TYR:CE1	1:B:92:TRP:HB3	2.55	0.41
1:D:32:SER:HB3	1:D:222:ILE:CD1	2.51	0.41
1:D:301:PHE:CZ	1:D:374:ARG:HD3	2.56	0.41
1:D:362:ILE:CG2	1:D:366:GLU:OE2	2.69	0.41
1:D:313:ILE:CD1	1:D:372:PRO:HG3	2.51	0.41
1:E:98:VAL:HA	1:E:103:LEU:O	2.21	0.41
1:E:387:VAL:CG1	1:E:391:ALA:HB3	2.51	0.41
1:A:318:GLU:OE2	1:B:432:ALA:HB1	2.21	0.41
1:B:142:VAL:HG12	1:B:143:SER:N	2.35	0.41
1:B:147:VAL:CG2	1:B:148:THR:N	2.82	0.41

Continued on next page...

Continued from previous page...

Atom-1	Atom-2	Interatomic distance (Å)	Clash overlap (Å)
1:D:21:MET:CE	1:D:59:PHE:HZ	2.34	0.41
1:E:425:ILE:HD11	1:E:456:PHE:CD2	2.56	0.41
1:E:462:TRP:O	1:E:463:HIS:CG	2.74	0.41
1:F:191:ILE:CG2	1:F:198:GLU:HG3	2.51	0.41
1:A:191:ILE:CB	1:A:198:GLU:HG2	2.51	0.41
1:A:334:ASP:O	1:A:338:MET:HG2	2.21	0.41
1:A:486:PHE:HB2	1:A:489:ILE:HD11	2.02	0.41
1:B:294:LYS:HE2	1:B:294:LYS:HB2	1.92	0.41
1:B:483:PHE:O	1:B:485:ASN:N	2.54	0.41
1:B:85:LYS:CE	1:C:17:ALA:O	2.69	0.41
1:C:425:ILE:HD12	1:C:431:SEP:O2P	2.20	0.41
1:E:264:SER:HA	1:E:271:ASP:OD1	2.21	0.41
1:E:418:GLN:HB2	1:F:423:HIS:O	2.21	0.41
1:A:220:LEU:HD13	1:A:246:ILE:CD1	2.51	0.40
1:A:266:GLY:O	1:A:300:ARG:NE	2.52	0.40
1:A:392:PHE:O	1:A:395:PHE:HB3	2.22	0.40
1:A:453:ILE:HB	1:A:470:PHE:CD2	2.56	0.40
1:B:25:ILE:HG23	1:B:58:GLN:HE22	1.85	0.40
1:C:76:PHE:O	1:C:110:PRO:HD3	2.21	0.40
1:C:120:GLY:C	1:C:122:ASP:N	2.75	0.40
1:C:52:LYS:HD3	1:C:182:THR:O	2.20	0.40
1:C:191:ILE:CB	1:C:198:GLU:HG2	2.44	0.40
1:C:191:ILE:CD1	1:C:198:GLU:HG2	2.49	0.40
1:C:69:GLU:HB3	1:C:140:ARG:HB2	2.03	0.40
1:C:56:SER:OG	1:C:73:PHE:HE1	2.05	0.40
1:D:147:VAL:CG2	1:D:148:THR:N	2.84	0.40
1:D:211:LEU:HD12	1:D:215:ARG:O	2.20	0.40
1:A:266:GLY:O	1:A:300:ARG:HG3	2.21	0.40
1:A:376:ALA:HA	1:A:411:LEU:O	2.21	0.40
1:A:453:ILE:HD13	1:A:454:ASN:H	1.83	0.40
1:B:158:SER:O	1:B:162:ARG:HG3	2.21	0.40
1:D:137:TYR:O	1:D:138:ARG:HB2	2.21	0.40
1:D:127:ILE:HD13	1:D:170:ARG:HG3	2.03	0.40
1:D:269:ARG:HB3	1:D:479:ILE:CD1	2.47	0.40
1:D:406:GLU:O	1:D:407:GLU:HB2	2.22	0.40
1:D:443:VAL:CG1	1:D:494:PRO:HG2	2.51	0.40
1:E:212:GLU:HG2	1:E:212:GLU:O	2.18	0.40
1:F:237:PHE:CD1	1:F:237:PHE:C	2.95	0.40
1:F:486:PHE:HE2	1:F:496:ARG:HH11	1.69	0.40
1:A:322:ALA:O	1:A:325:LEU:HB2	2.20	0.40
1:A:262:ARG:HH22	1:A:461:SER:HB2	1.86	0.40

Continued on next page...

Continued from previous page...

Atom-1	Atom-2	Interatomic distance (Å)	Clash overlap (Å)
1:B:72:VAL:HG23	1:B:139:ALA:CB	2.52	0.40
1:B:344:LEU:C	1:B:344:LEU:HD13	2.42	0.40
1:B:371:LYS:C	1:B:371:LYS:HD3	2.42	0.40
1:C:88:ARG:CZ	1:D:15:HIS:HA	2.51	0.40
1:D:303:GLU:O	1:D:303:GLU:HG2	2.22	0.40
1:D:495:THR:O	1:D:497:ILE:HG23	2.21	0.40
1:F:182:THR:CG2	1:F:192:ALA:HB1	2.45	0.40
1:F:61:TYR:CZ	1:F:92:TRP:CE3	3.09	0.40
1:A:151:PHE:C	1:A:153:GLN:H	2.23	0.40
1:A:212:GLU:O	1:A:212:GLU:HG2	2.22	0.40
1:A:471:MET:HE2	1:A:478:ASP:CB	2.51	0.40
1:B:119:GLY:C	1:B:121:PHE:H	2.24	0.40
1:B:145:ASP:O	1:B:146:SER:OG	2.34	0.40
1:B:145:ASP:OD2	1:B:181:THR:HG21	2.22	0.40
1:B:170:ARG:NH1	1:B:170:ARG:HB3	2.37	0.40
1:B:25:ILE:HG23	1:B:58:GLN:NE2	2.36	0.40
1:C:370:PHE:O	1:C:371:LYS:C	2.60	0.40
1:D:118:VAL:HG12	1:D:118:VAL:O	2.21	0.40
1:D:153:GLN:O	1:D:154:TYR:HB3	2.22	0.40
1:E:182:THR:HG21	1:E:192:ALA:HB1	2.03	0.40
1:F:453:ILE:HB	1:F:470:PHE:CD2	2.56	0.40
1:A:234:GLU:O	1:F:215:ARG:NH2	2.55	0.40
1:A:237:PHE:HB3	1:A:246:ILE:HG12	2.04	0.40
1:A:52:LYS:HB2	1:A:52:LYS:HE3	1.73	0.40
2:A:903:ATP:O1G	1:B:224:LYS:NZ	2.55	0.40
1:B:311:ARG:HB3	1:B:370:PHE:CE2	2.57	0.40
1:B:467:ILE:O	1:B:482:SER:HA	2.22	0.40
1:C:283:ILE:HD13	1:C:400:THR:HG23	2.03	0.40
1:C:24:MET:HB2	1:C:62:ASN:HB3	2.03	0.40
1:D:33:HIS:CD2	1:D:230:HIS:HA	2.57	0.40
1:D:340:ARG:O	1:D:342:ASN:N	2.54	0.40
1:E:21:MET:CE	1:E:59:PHE:CZ	3.04	0.40
1:E:469:GLU:HB2	1:E:483:PHE:CZ	2.56	0.40
1:F:111:ASP:OD1	1:F:112:PRO:CD	2.69	0.40
1:F:311:ARG:HB3	1:F:370:PHE:CE2	2.57	0.40
1:F:332:GLY:O	1:F:333:MET:O	2.39	0.40
1:F:396:VAL:O	1:F:400:THR:CB	2.63	0.40
1:F:418:GLN:O	1:F:418:GLN:HG3	2.22	0.40
1:E:323:GLN:NE2	1:F:459:ARG:HD3	2.36	0.40

There are no symmetry-related clashes.

5.3 Torsion angles

5.3.1 Protein backbone

In the following table, the Percentiles column shows the percent Ramachandran outliers of the chain as a percentile score with respect to all X-ray entries followed by that with respect to entries of similar resolution.

The Analysed column shows the number of residues for which the backbone conformation was analysed, and the total number of residues.

Mol	Chain	Analysed	Favoured	Allowed	Outliers	Percentiles	
1	A	481/519 (93%)	427 (89%)	36 (8%)	18 (4%)	4	16
1	B	481/519 (93%)	414 (86%)	52 (11%)	15 (3%)	5	19
1	C	481/519 (93%)	428 (89%)	37 (8%)	16 (3%)	4	18
1	D	481/519 (93%)	431 (90%)	38 (8%)	12 (2%)	6	25
1	E	481/519 (93%)	423 (88%)	43 (9%)	15 (3%)	5	19
1	F	481/519 (93%)	429 (89%)	37 (8%)	15 (3%)	5	19
All	All	2886/3114 (93%)	2552 (88%)	243 (8%)	91 (3%)	5	19

All (91) Ramachandran outliers are listed below:

Mol	Chain	Res	Type
1	A	17	ALA
1	A	117	VAL
1	A	154	TYR
1	A	211	LEU
1	A	463	HIS
1	B	154	TYR
1	B	463	HIS
1	C	17	ALA
1	C	117	VAL
1	C	123	LEU
1	C	154	TYR
1	C	333	MET
1	C	463	HIS
1	D	122	ASP
1	D	154	TYR
1	D	333	MET
1	E	122	ASP
1	E	154	TYR
1	E	333	MET
1	F	114	GLY

Continued on next page...

Continued from previous page...

Mol	Chain	Res	Type
1	F	118	VAL
1	F	154	TYR
1	F	249	LEU
1	F	333	MET
1	F	463	HIS
1	A	333	MET
1	A	420	MET
1	B	119	GLY
1	B	211	LEU
1	B	420	MET
1	B	461	SER
1	B	484	ARG
1	C	122	ASP
1	C	211	LEU
1	D	214	GLU
1	D	420	MET
1	D	494	PRO
1	E	211	LEU
1	E	420	MET
1	E	463	HIS
1	F	189	GLY
1	F	211	LEU
1	F	354	ALA
1	A	120	GLY
1	A	249	LEU
1	B	326	ARG
1	B	333	MET
1	C	112	PRO
1	C	249	LEU
1	C	289	ALA
1	C	348	CYS
1	C	349	ALA
1	D	113	GLU
1	D	211	LEU
1	D	341	GLN
1	E	123	LEU
1	E	349	ALA
1	E	482	SER
1	E	488	ARG
1	F	117	VAL
1	F	420	MET
1	A	379	SER

Continued on next page...

Continued from previous page...

Mol	Chain	Res	Type
1	B	100	GLU
1	B	341	GLN
1	B	379	SER
1	C	420	MET
1	D	212	GLU
1	E	113	GLU
1	F	370	PHE
1	A	212	GLU
1	A	214	GLU
1	A	348	CYS
1	B	193	ARG
1	B	348	CYS
1	B	354	ALA
1	C	124	SER
1	E	117	VAL
1	E	249	LEU
1	F	348	CYS
1	F	387	VAL
1	A	24	MET
1	A	112	PRO
1	C	379	SER
1	D	348	CYS
1	A	386	GLY
1	D	118	VAL
1	E	118	VAL
1	A	185	ILE
1	A	398	GLY
1	E	18	ILE
1	F	119	GLY

5.3.2 Protein sidechains ⓘ

In the following table, the Percentiles column shows the percent sidechain outliers of the chain as a percentile score with respect to all X-ray entries followed by that with respect to entries of similar resolution.

The Analysed column shows the number of residues for which the sidechain conformation was analysed, and the total number of residues.

Mol	Chain	Analysed	Rotameric	Outliers	Percentiles	
1	A	410/442 (93%)	386 (94%)	24 (6%)	23	55
1	B	410/442 (93%)	393 (96%)	17 (4%)	35	70

Continued on next page...

Continued from previous page...

Mol	Chain	Analysed	Rotameric	Outliers	Percentiles	
1	C	410/442 (93%)	384 (94%)	26 (6%)	21	51
1	D	410/442 (93%)	378 (92%)	32 (8%)	15	39
1	E	410/442 (93%)	379 (92%)	31 (8%)	15	41
1	F	410/442 (93%)	381 (93%)	29 (7%)	17	44
All	All	2460/2652 (93%)	2301 (94%)	159 (6%)	20	49

All (159) residues with a non-rotameric sidechain are listed below:

Mol	Chain	Res	Type
1	A	26	GLU
1	A	33	HIS
1	A	79	THR
1	A	81	GLN
1	A	92	TRP
1	A	123	LEU
1	A	151	PHE
1	A	154	TYR
1	A	186	GLU
1	A	209	ASN
1	A	212	GLU
1	A	223	LEU
1	A	238	THR
1	A	270	LEU
1	A	342	ASN
1	A	360	LEU
1	A	371	LYS
1	A	400	THR
1	A	451	ARG
1	A	453	ILE
1	A	458	MET
1	A	462	TRP
1	A	469	GLU
1	A	471	MET
1	B	26	GLU
1	B	81	GLN
1	B	128	GLU
1	B	151	PHE
1	B	154	TYR
1	B	186	GLU
1	B	212	GLU
1	B	218	ARG

Continued on next page...

Continued from previous page...

Mol	Chain	Res	Type
1	B	223	LEU
1	B	270	LEU
1	B	360	LEU
1	B	371	LYS
1	B	451	ARG
1	B	453	ILE
1	B	462	TRP
1	B	463	HIS
1	B	471	MET
1	C	26	GLU
1	C	79	THR
1	C	81	GLN
1	C	151	PHE
1	C	154	TYR
1	C	186	GLU
1	C	209	ASN
1	C	211	LEU
1	C	212	GLU
1	C	215	ARG
1	C	223	LEU
1	C	245	ASN
1	C	256	GLN
1	C	270	LEU
1	C	303	GLU
1	C	314	LEU
1	C	344	LEU
1	C	356	LEU
1	C	360	LEU
1	C	371	LYS
1	C	375	ILE
1	C	400	THR
1	C	428	SER
1	C	451	ARG
1	C	453	ILE
1	C	470	PHE
1	D	26	GLU
1	D	79	THR
1	D	81	GLN
1	D	121	PHE
1	D	122	ASP
1	D	123	LEU
1	D	145	ASP

Continued on next page...

Continued from previous page...

Mol	Chain	Res	Type
1	D	151	PHE
1	D	154	TYR
1	D	181	THR
1	D	186	GLU
1	D	209	ASN
1	D	212	GLU
1	D	223	LEU
1	D	256	GLN
1	D	270	LEU
1	D	287	THR
1	D	290	THR
1	D	294	LYS
1	D	342	ASN
1	D	356	LEU
1	D	360	LEU
1	D	369	ASP
1	D	371	LYS
1	D	400	THR
1	D	451	ARG
1	D	453	ILE
1	D	458	MET
1	D	463	HIS
1	D	469	GLU
1	D	471	MET
1	D	496	ARG
1	E	18	ILE
1	E	26	GLU
1	E	79	THR
1	E	81	GLN
1	E	121	PHE
1	E	151	PHE
1	E	154	TYR
1	E	186	GLU
1	E	212	GLU
1	E	223	LEU
1	E	228	THR
1	E	245	ASN
1	E	255	THR
1	E	256	GLN
1	E	270	LEU
1	E	287	THR
1	E	290	THR

Continued on next page...

Continued from previous page...

Mol	Chain	Res	Type
1	E	314	LEU
1	E	342	ASN
1	E	344	LEU
1	E	360	LEU
1	E	371	LYS
1	E	406	GLU
1	E	451	ARG
1	E	453	ILE
1	E	458	MET
1	E	461	SER
1	E	469	GLU
1	E	471	MET
1	E	474	ASP
1	E	497	ILE
1	F	33	HIS
1	F	45	SER
1	F	79	THR
1	F	111	ASP
1	F	121	PHE
1	F	123	LEU
1	F	151	PHE
1	F	181	THR
1	F	186	GLU
1	F	203	ASN
1	F	209	ASN
1	F	212	GLU
1	F	218	ARG
1	F	223	LEU
1	F	256	GLN
1	F	270	LEU
1	F	282	SER
1	F	290	THR
1	F	342	ASN
1	F	344	LEU
1	F	360	LEU
1	F	371	LYS
1	F	451	ARG
1	F	453	ILE
1	F	462	TRP
1	F	469	GLU
1	F	471	MET
1	F	487	GLU

Continued on next page...

Continued from previous page...

Mol	Chain	Res	Type
1	F	496	ARG

Some sidechains can be flipped to improve hydrogen bonding and reduce clashes. All (55) such sidechains are listed below:

Mol	Chain	Res	Type
1	A	33	HIS
1	A	62	ASN
1	A	81	GLN
1	A	135	GLN
1	A	152	GLN
1	A	209	ASN
1	A	323	GLN
1	A	361	GLN
1	A	368	ASN
1	A	414	ASN
1	B	15	HIS
1	B	33	HIS
1	B	62	ASN
1	B	81	GLN
1	B	209	ASN
1	B	361	GLN
1	B	368	ASN
1	B	414	ASN
1	B	441	GLN
1	C	33	HIS
1	C	62	ASN
1	C	81	GLN
1	C	209	ASN
1	C	245	ASN
1	C	323	GLN
1	C	368	ASN
1	C	389	ASN
1	C	414	ASN
1	C	418	GLN
1	C	454	ASN
1	D	33	HIS
1	D	81	GLN
1	D	209	ASN
1	D	368	ASN
1	D	414	ASN
1	D	441	GLN
1	E	33	HIS

Continued on next page...

Continued from previous page...

Mol	Chain	Res	Type
1	E	62	ASN
1	E	81	GLN
1	E	209	ASN
1	E	245	ASN
1	E	327	ASN
1	E	368	ASN
1	E	414	ASN
1	E	441	GLN
1	E	454	ASN
1	F	16	GLN
1	F	81	GLN
1	F	135	GLN
1	F	153	GLN
1	F	209	ASN
1	F	361	GLN
1	F	368	ASN
1	F	414	ASN
1	F	454	ASN

5.3.3 RNA ⓘ

There are no RNA molecules in this entry.

5.4 Non-standard residues in protein, DNA, RNA chains ⓘ

6 non-standard protein/DNA/RNA residues are modelled in this entry.

In the following table, the Counts columns list the number of bonds (or angles) for which Mogul statistics could be retrieved, the number of bonds (or angles) that are observed in the model and the number of bonds (or angles) that are defined in the chemical component dictionary. The Link column lists molecule types, if any, to which the group is linked. The Z score for a bond length (or angle) is the number of standard deviations the observed value is removed from the expected value. A bond length (or angle) with $|Z| > 2$ is considered an outlier worth inspection. RMSZ is the root-mean-square of all Z scores of the bond lengths (or angles).

Mol	Type	Chain	Res	Link	Bond lengths			Bond angles		
					Counts	RMSZ	$\# Z > 2$	Counts	RMSZ	$\# Z > 2$
1	SEP	A	431	1	9,9,10	1.39	1 (11%)	9,12,14	1.73	2 (22%)
1	SEP	B	431	1	9,9,10	1.63	2 (22%)	9,12,14	1.66	2 (22%)
1	SEP	C	431	1	9,9,10	1.61	2 (22%)	9,12,14	3.25	2 (22%)
1	SEP	D	431	1	9,9,10	1.40	1 (11%)	9,12,14	1.39	2 (22%)

Mol	Type	Chain	Res	Link	Bond lengths			Bond angles		
					Counts	RMSZ	# Z > 2	Counts	RMSZ	# Z > 2
1	SEP	E	431	1	9,9,10	2.00	2 (22%)	9,12,14	1.06	0
1	SEP	F	431	1	9,9,10	1.88	2 (22%)	9,12,14	1.81	3 (33%)

In the following table, the Chirals column lists the number of chiral outliers, the number of chiral centers analysed, the number of these observed in the model and the number defined in the chemical component dictionary. Similar counts are reported in the Torsion and Rings columns. '-' means no outliers of that kind were identified.

Mol	Type	Chain	Res	Link	Chirals	Torsions	Rings
1	SEP	A	431	1	-	0/5/8/10	0/0/0/0
1	SEP	B	431	1	-	0/5/8/10	0/0/0/0
1	SEP	C	431	1	-	0/5/8/10	0/0/0/0
1	SEP	D	431	1	-	0/5/8/10	0/0/0/0
1	SEP	E	431	1	-	0/5/8/10	0/0/0/0
1	SEP	F	431	1	-	0/5/8/10	0/0/0/0

All (10) bond length outliers are listed below:

Mol	Chain	Res	Type	Atoms	Z	Observed(Å)	Ideal(Å)
1	C	431	SEP	CA-C	2.08	1.53	1.50
1	B	431	SEP	CA-C	2.60	1.53	1.50
1	E	431	SEP	P-O1P	3.11	1.61	1.50
1	A	431	SEP	P-O1P	3.12	1.61	1.50
1	F	431	SEP	P-O1P	3.14	1.61	1.50
1	D	431	SEP	P-O1P	3.14	1.61	1.50
1	B	431	SEP	P-O1P	3.14	1.61	1.50
1	C	431	SEP	P-O1P	3.19	1.61	1.50
1	F	431	SEP	CA-C	3.73	1.55	1.50
1	E	431	SEP	CA-C	4.42	1.56	1.50

All (11) bond angle outliers are listed below:

Mol	Chain	Res	Type	Atoms	Z	Observed(°)	Ideal(°)
1	C	431	SEP	P-OG-CB	-5.65	102.72	118.30
1	F	431	SEP	P-OG-CB	-3.75	107.97	118.30
1	B	431	SEP	P-OG-CB	-3.11	109.72	118.30
1	A	431	SEP	P-OG-CB	-2.84	110.48	118.30
1	D	431	SEP	P-OG-CB	-2.41	111.64	118.30
1	F	431	SEP	O-C-CA	-2.00	119.49	125.02
1	D	431	SEP	OG-CB-CA	2.27	110.40	108.17
1	F	431	SEP	OG-CB-CA	2.75	110.88	108.17
1	B	431	SEP	OG-CB-CA	2.86	110.99	108.17

Continued on next page...

Continued from previous page...

Mol	Chain	Res	Type	Atoms	Z	Observed(°)	Ideal(°)
1	A	431	SEP	OG-CB-CA	3.38	111.50	108.17
1	C	431	SEP	OG-CB-CA	7.37	115.43	108.17

There are no chirality outliers.

There are no torsion outliers.

There are no ring outliers.

5 monomers are involved in 8 short contacts:

Mol	Chain	Res	Type	Clashes	Symm-Clashes
1	A	431	SEP	1	0
1	B	431	SEP	1	0
1	C	431	SEP	2	0
1	D	431	SEP	2	0
1	E	431	SEP	2	0

5.5 Carbohydrates [i](#)

There are no carbohydrates in this entry.

5.6 Ligand geometry [i](#)

Of 30 ligands modelled in this entry, 18 are monoatomic - leaving 12 for Mogul analysis.

In the following table, the Counts columns list the number of bonds (or angles) for which Mogul statistics could be retrieved, the number of bonds (or angles) that are observed in the model and the number of bonds (or angles) that are defined in the chemical component dictionary. The Link column lists molecule types, if any, to which the group is linked. The Z score for a bond length (or angle) is the number of standard deviations the observed value is removed from the expected value. A bond length (or angle) with $|Z| > 2$ is considered an outlier worth inspection. RMSZ is the root-mean-square of all Z scores of the bond lengths (or angles).

Mol	Type	Chain	Res	Link	Bond lengths			Bond angles		
					Counts	RMSZ	# Z > 2	Counts	RMSZ	# Z > 2
2	ATP	A	901	3	27,33,33	1.52	5 (18%)	25,52,52	2.41	4 (16%)
2	ATP	A	903	3	27,33,33	1.31	3 (11%)	25,52,52	2.34	5 (20%)
2	ATP	B	901	3	27,33,33	1.21	2 (7%)	25,52,52	2.50	5 (20%)
2	ATP	B	903	3	27,33,33	1.30	3 (11%)	25,52,52	2.42	4 (16%)
2	ATP	C	901	3	27,33,33	1.44	4 (14%)	25,52,52	2.37	5 (20%)
2	ATP	C	903	3	27,33,33	1.16	1 (3%)	25,52,52	2.42	4 (16%)

Mol	Type	Chain	Res	Link	Bond lengths			Bond angles		
					Counts	RMSZ	# Z > 2	Counts	RMSZ	# Z > 2
2	ATP	D	901	3	27,33,33	1.36	5 (18%)	25,52,52	2.47	5 (20%)
2	ATP	D	903	3	27,33,33	1.33	4 (14%)	25,52,52	2.58	4 (16%)
2	ATP	E	901	3	27,33,33	1.36	4 (14%)	25,52,52	2.39	4 (16%)
2	ATP	E	903	3	27,33,33	1.39	4 (14%)	25,52,52	2.53	4 (16%)
2	ATP	F	901	3	27,33,33	1.32	4 (14%)	25,52,52	2.50	5 (20%)
2	ATP	F	903	3	27,33,33	1.57	6 (22%)	25,52,52	2.49	4 (16%)

In the following table, the Chirals column lists the number of chiral outliers, the number of chiral centers analysed, the number of these observed in the model and the number defined in the chemical component dictionary. Similar counts are reported in the Torsion and Rings columns. '-' means no outliers of that kind were identified.

Mol	Type	Chain	Res	Link	Chirals	Torsions	Rings
2	ATP	A	901	3	-	0/18/38/38	0/3/3/3
2	ATP	A	903	3	-	0/18/38/38	0/3/3/3
2	ATP	B	901	3	-	0/18/38/38	0/3/3/3
2	ATP	B	903	3	-	0/18/38/38	0/3/3/3
2	ATP	C	901	3	-	0/18/38/38	0/3/3/3
2	ATP	C	903	3	-	0/18/38/38	0/3/3/3
2	ATP	D	901	3	-	0/18/38/38	0/3/3/3
2	ATP	D	903	3	-	0/18/38/38	0/3/3/3
2	ATP	E	901	3	-	0/18/38/38	0/3/3/3
2	ATP	E	903	3	-	0/18/38/38	0/3/3/3
2	ATP	F	901	3	-	0/18/38/38	0/3/3/3
2	ATP	F	903	3	-	0/18/38/38	0/3/3/3

All (45) bond length outliers are listed below:

Mol	Chain	Res	Type	Atoms	Z	Observed(Å)	Ideal(Å)
2	F	903	ATP	O2'-C2'	-2.93	1.36	1.43
2	D	903	ATP	C2'-C1'	-2.81	1.49	1.53
2	D	901	ATP	C2'-C1'	-2.78	1.49	1.53
2	F	903	ATP	C2'-C1'	-2.51	1.49	1.53
2	D	903	ATP	O2'-C2'	-2.50	1.37	1.43
2	E	903	ATP	C2'-C1'	-2.25	1.50	1.53
2	E	903	ATP	O4'-C4'	-2.20	1.40	1.45
2	A	901	ATP	C2'-C1'	-2.17	1.50	1.53
2	F	903	ATP	PB-O1B	-2.03	1.43	1.50
2	E	903	ATP	PG-O3B	2.01	1.63	1.60
2	A	903	ATP	C2-N1	2.03	1.37	1.33
2	D	901	ATP	C2-N1	2.04	1.37	1.33

Continued on next page...

Continued from previous page...

Mol	Chain	Res	Type	Atoms	Z	Observed(Å)	Ideal(Å)
2	D	901	ATP	O4'-C1'	2.08	1.44	1.41
2	F	903	ATP	C2-N1	2.10	1.37	1.33
2	B	903	ATP	C2-N1	2.12	1.37	1.33
2	E	901	ATP	C2-N1	2.14	1.37	1.33
2	F	901	ATP	C4-N3	2.15	1.38	1.35
2	D	903	ATP	PG-O3B	2.16	1.63	1.60
2	C	901	ATP	O4'-C1'	2.16	1.44	1.41
2	D	901	ATP	PG-O3B	2.22	1.63	1.60
2	C	901	ATP	C2-N1	2.27	1.38	1.33
2	A	901	ATP	C2-N1	2.32	1.38	1.33
2	F	901	ATP	C2-N1	2.34	1.38	1.33
2	A	901	ATP	O4'-C1'	2.36	1.44	1.41
2	B	903	ATP	O4'-C1'	2.38	1.44	1.41
2	B	901	ATP	O4'-C1'	2.42	1.44	1.41
2	A	903	ATP	PG-O3B	2.42	1.64	1.60
2	C	901	ATP	PG-O3B	2.45	1.64	1.60
2	E	901	ATP	O4'-C1'	2.54	1.44	1.41
2	E	901	ATP	C4-N3	2.57	1.39	1.35
2	F	901	ATP	O4'-C1'	3.06	1.45	1.41
2	D	901	ATP	C2-N3	3.48	1.38	1.32
2	B	901	ATP	C2-N3	3.49	1.38	1.32
2	C	903	ATP	C2-N3	3.62	1.38	1.32
2	D	903	ATP	C2-N3	3.63	1.38	1.32
2	F	903	ATP	PG-O1G	3.71	1.63	1.50
2	A	901	ATP	PG-O3B	3.85	1.66	1.60
2	A	903	ATP	C2-N3	3.87	1.38	1.32
2	F	903	ATP	C2-N3	3.90	1.38	1.32
2	F	901	ATP	C2-N3	3.91	1.38	1.32
2	A	901	ATP	C2-N3	3.97	1.38	1.32
2	B	903	ATP	C2-N3	3.99	1.38	1.32
2	E	903	ATP	C2-N3	4.23	1.39	1.32
2	E	901	ATP	C2-N3	4.39	1.39	1.32
2	C	901	ATP	C2-N3	4.53	1.39	1.32

All (53) bond angle outliers are listed below:

Mol	Chain	Res	Type	Atoms	Z	Observed(°)	Ideal(°)
2	D	903	ATP	N3-C2-N1	-10.93	119.34	128.86
2	F	903	ATP	N3-C2-N1	-10.61	119.62	128.86
2	B	901	ATP	N3-C2-N1	-10.50	119.72	128.86
2	E	903	ATP	N3-C2-N1	-10.15	120.02	128.86
2	F	901	ATP	N3-C2-N1	-10.08	120.08	128.86

Continued on next page...

Continued from previous page...

Mol	Chain	Res	Type	Atoms	Z	Observed(°)	Ideal(°)
2	D	901	ATP	N3-C2-N1	-10.08	120.08	128.86
2	C	903	ATP	N3-C2-N1	-9.97	120.18	128.86
2	B	903	ATP	N3-C2-N1	-9.95	120.19	128.86
2	E	901	ATP	N3-C2-N1	-9.75	120.36	128.86
2	A	903	ATP	N3-C2-N1	-9.68	120.43	128.86
2	A	901	ATP	N3-C2-N1	-9.65	120.45	128.86
2	C	901	ATP	N3-C2-N1	-9.55	120.54	128.86
2	E	903	ATP	C4-C5-N7	-4.93	104.65	109.41
2	E	901	ATP	C4-C5-N7	-4.55	105.02	109.41
2	D	901	ATP	C4-C5-N7	-4.53	105.03	109.41
2	F	901	ATP	C4-C5-N7	-4.52	105.05	109.41
2	D	903	ATP	C4-C5-N7	-4.50	105.07	109.41
2	C	901	ATP	C4-C5-N7	-4.42	105.14	109.41
2	B	903	ATP	C4-C5-N7	-4.40	105.16	109.41
2	C	903	ATP	C4-C5-N7	-4.36	105.20	109.41
2	A	901	ATP	C4-C5-N7	-4.35	105.21	109.41
2	A	903	ATP	C4-C5-N7	-4.20	105.36	109.41
2	B	901	ATP	C4-C5-N7	-4.12	105.43	109.41
2	F	903	ATP	C4-C5-N7	-3.99	105.56	109.41
2	E	903	ATP	N6-C6-N1	-2.58	113.65	118.77
2	C	903	ATP	N6-C6-N1	-2.57	113.67	118.77
2	A	901	ATP	N6-C6-N1	-2.41	113.98	118.77
2	D	903	ATP	N6-C6-N1	-2.36	114.08	118.77
2	D	901	ATP	N6-C6-N1	-2.35	114.11	118.77
2	F	901	ATP	N6-C6-N1	-2.31	114.19	118.77
2	B	903	ATP	N6-C6-N1	-2.31	114.19	118.77
2	B	901	ATP	N6-C6-N1	-2.31	114.19	118.77
2	A	903	ATP	N6-C6-N1	-2.21	114.39	118.77
2	E	901	ATP	N6-C6-N1	-2.16	114.49	118.77
2	F	903	ATP	N6-C6-N1	-2.07	114.67	118.77
2	C	901	ATP	N6-C6-N1	-2.04	114.72	118.77
2	A	903	ATP	O2'-C2'-C3'	2.01	118.28	111.83
2	C	901	ATP	C4'-O4'-C1'	2.03	111.93	109.77
2	D	901	ATP	O2'-C2'-C3'	2.05	118.41	111.83
2	B	901	ATP	O2'-C2'-C3'	2.34	119.33	111.83
2	F	903	ATP	C5-C6-N6	2.34	125.25	120.47
2	E	901	ATP	C5-C6-N6	2.54	125.64	120.47
2	F	901	ATP	O2'-C2'-C3'	2.58	120.08	111.83
2	C	901	ATP	C5-C6-N6	2.58	125.73	120.47
2	B	901	ATP	C5-C6-N6	2.68	125.93	120.47
2	A	903	ATP	C5-C6-N6	2.73	126.03	120.47
2	F	901	ATP	C5-C6-N6	2.79	126.15	120.47

Continued on next page...

Continued from previous page...

Mol	Chain	Res	Type	Atoms	Z	Observed(°)	Ideal(°)
2	B	903	ATP	C5-C6-N6	2.80	126.18	120.47
2	D	903	ATP	C5-C6-N6	2.82	126.22	120.47
2	E	903	ATP	C5-C6-N6	2.88	126.33	120.47
2	C	903	ATP	C5-C6-N6	2.91	126.39	120.47
2	D	901	ATP	C5-C6-N6	2.91	126.40	120.47
2	A	901	ATP	C5-C6-N6	2.93	126.44	120.47

There are no chirality outliers.

There are no torsion outliers.

There are no ring outliers.

12 monomers are involved in 39 short contacts:

Mol	Chain	Res	Type	Clashes	Symm-Clashes
2	A	901	ATP	3	0
2	A	903	ATP	2	0
2	B	901	ATP	4	0
2	B	903	ATP	2	0
2	C	901	ATP	1	0
2	C	903	ATP	1	0
2	D	901	ATP	4	0
2	D	903	ATP	2	0
2	E	901	ATP	5	0
2	E	903	ATP	4	0
2	F	901	ATP	5	0
2	F	903	ATP	6	0

5.7 Other polymers [i](#)

There are no such residues in this entry.

5.8 Polymer linkage issues [i](#)

There are no chain breaks in this entry.

6 Fit of model and data

6.1 Protein, DNA and RNA chains

In the following table, the column labelled ‘#RSRZ> 2’ contains the number (and percentage) of RSRZ outliers, followed by percent RSRZ outliers for the chain as percentile scores relative to all X-ray entries and entries of similar resolution. The OWAB column contains the minimum, median, 95th percentile and maximum values of the occupancy-weighted average B-factor per residue. The column labelled ‘Q< 0.9’ lists the number of (and percentage) of residues with an average occupancy less than 0.9.

Mol	Chain	Analysed	<RSRZ>	#RSRZ>2	OWAB(Å ²)	Q<0.9
1	A	483/519 (93%)	0.27	30 (6%) 21 16	34, 74, 118, 149	0
1	B	483/519 (93%)	0.37	35 (7%) 16 11	46, 78, 120, 159	0
1	C	483/519 (93%)	0.16	29 (6%) 23 17	33, 67, 116, 160	0
1	D	483/519 (93%)	-0.07	18 (3%) 42 37	25, 54, 101, 148	0
1	E	483/519 (93%)	0.02	25 (5%) 28 23	18, 57, 97, 147	0
1	F	483/519 (93%)	0.06	24 (4%) 30 25	24, 65, 106, 143	0
All	All	2898/3114 (93%)	0.13	161 (5%) 25 20	18, 66, 114, 160	0

All (161) RSRZ outliers are listed below:

Mol	Chain	Res	Type	RSRZ
1	C	120	GLY	11.5
1	C	118	VAL	8.9
1	B	116	GLU	8.6
1	F	154	TYR	7.9
1	B	117	VAL	7.7
1	B	121	PHE	7.7
1	C	119	GLY	6.8
1	A	120	GLY	6.6
1	A	154	TYR	6.4
1	B	118	VAL	6.1
1	A	121	PHE	6.0
1	B	154	TYR	5.9
1	E	117	VAL	5.9
1	E	154	TYR	5.4
1	E	120	GLY	5.4
1	D	15	HIS	5.4
1	D	117	VAL	5.2
1	C	117	VAL	5.0
1	A	153	GLN	4.9

Continued on next page...

Continued from previous page...

Mol	Chain	Res	Type	RSRZ
1	D	118	VAL	4.9
1	A	475	LYS	4.8
1	D	116	GLU	4.8
1	D	115	GLN	4.7
1	B	16	GLN	4.6
1	B	14	GLU	4.5
1	D	120	GLY	4.4
1	D	154	TYR	4.4
1	D	113	GLU	4.4
1	C	423	HIS	4.3
1	E	118	VAL	4.3
1	B	122	ASP	4.3
1	F	117	VAL	4.3
1	B	115	GLN	4.3
1	A	114	GLY	4.2
1	B	88	ARG	4.2
1	D	119	GLY	4.2
1	B	132	TYR	4.2
1	A	115	GLN	4.0
1	A	341	GLN	4.0
1	A	16	GLN	3.9
1	D	16	GLN	3.9
1	C	152	GLN	3.9
1	C	16	GLN	3.9
1	C	116	GLU	3.9
1	C	154	TYR	3.9
1	E	113	GLU	3.9
1	C	121	PHE	3.7
1	E	115	GLN	3.7
1	C	115	GLN	3.6
1	F	497	ILE	3.5
1	D	121	PHE	3.5
1	C	153	GLN	3.4
1	F	119	GLY	3.4
1	A	342	ASN	3.3
1	A	309	LYS	3.3
1	A	496	ARG	3.3
1	E	116	GLU	3.3
1	F	485	ASN	3.3
1	E	423	HIS	3.3
1	B	162	ARG	3.3
1	B	497	ILE	3.3

Continued on next page...

Continued from previous page...

Mol	Chain	Res	Type	RSRZ
1	F	121	PHE	3.3
1	A	340	ARG	3.3
1	A	116	GLU	3.2
1	C	145	ASP	3.2
1	B	119	GLY	3.2
1	E	121	PHE	3.1
1	F	496	ARG	3.1
1	B	15	HIS	3.1
1	E	153	GLN	3.1
1	A	255	THR	3.1
1	F	155	ASP	3.1
1	D	471	MET	3.0
1	D	114	GLY	3.0
1	D	484	ARG	3.0
1	B	423	HIS	3.0
1	F	257	ARG	3.0
1	C	114	GLY	3.0
1	C	181	THR	2.9
1	E	119	GLY	2.9
1	A	378	ASP	2.9
1	E	112	PRO	2.9
1	F	156	ALA	2.9
1	E	114	GLY	2.8
1	F	153	GLN	2.8
1	C	173	GLN	2.8
1	B	342	ASN	2.7
1	B	153	GLN	2.7
1	C	17	ALA	2.7
1	A	471	MET	2.6
1	A	117	VAL	2.6
1	D	112	PRO	2.6
1	F	321	ARG	2.6
1	A	14	GLU	2.6
1	A	113	GLU	2.6
1	C	53	THR	2.6
1	F	255	THR	2.6
1	B	17	ALA	2.6
1	B	181	THR	2.6
1	E	188	TYR	2.6
1	F	423	HIS	2.5
1	B	180	MET	2.5
1	E	321	ARG	2.5

Continued on next page...

Continued from previous page...

Mol	Chain	Res	Type	RSRZ
1	F	253	ARG	2.5
1	C	143	SER	2.5
1	A	329	TYR	2.5
1	B	258	SER	2.5
1	E	309	LYS	2.5
1	E	329	TYR	2.5
1	A	256	GLN	2.5
1	E	474	ASP	2.4
1	B	255	THR	2.4
1	B	309	LYS	2.4
1	C	188	TYR	2.4
1	B	155	ASP	2.4
1	C	15	HIS	2.4
1	B	484	ARG	2.4
1	F	334	ASP	2.4
1	E	484	ARG	2.4
1	B	143	SER	2.4
1	E	337	GLU	2.3
1	E	111	ASP	2.3
1	F	311	ARG	2.3
1	B	158	SER	2.3
1	A	15	HIS	2.3
1	B	496	ARG	2.3
1	C	144	ILE	2.3
1	C	113	GLU	2.3
1	F	120	GLY	2.3
1	E	475	LYS	2.3
1	C	124	SER	2.3
1	F	92	TRP	2.2
1	F	340	ARG	2.2
1	B	92	TRP	2.2
1	C	140	ARG	2.2
1	A	188	TYR	2.2
1	A	241	ASP	2.2
1	C	332	GLY	2.2
1	A	436	THR	2.2
1	B	91	GLY	2.2
1	B	179	VAL	2.2
1	D	14	GLU	2.2
1	F	249	LEU	2.2
1	F	342	ASN	2.2
1	C	146	SER	2.1

Continued on next page...

Continued from previous page...

Mol	Chain	Res	Type	RSRZ
1	E	333	MET	2.1
1	E	343	LEU	2.1
1	B	251	ALA	2.1
1	F	116	GLU	2.1
1	C	189	GLY	2.1
1	A	295	THR	2.1
1	E	342	ASN	2.1
1	A	368	ASN	2.1
1	A	17	ALA	2.1
1	B	311	ARG	2.0
1	D	53	THR	2.0
1	B	99	ASP	2.0
1	D	111	ASP	2.0
1	A	293	GLY	2.0
1	C	340	ARG	2.0
1	F	254	LEU	2.0

6.2 Non-standard residues in protein, DNA, RNA chains [i](#)

In the following table, the Atoms column lists the number of modelled atoms in the group and the number defined in the chemical component dictionary. LLDF column lists the quality of electron density of the group with respect to its neighbouring residues in protein, DNA or RNA chains. The B-factors column lists the minimum, median, 95th percentile and maximum values of B factors of atoms in the group. The column labelled 'Q< 0.9' lists the number of atoms with occupancy less than 0.9.

Mol	Type	Chain	Res	Atoms	RSCC	RSR	LLDF	B-factors(\AA^2)	Q<0.9
1	SEP	C	431	10/11	0.74	0.30	-	79,84,100,100	0
1	SEP	D	431	10/11	0.84	0.24	-	69,77,94,96	0
1	SEP	E	431	10/11	0.83	0.23	-	57,65,81,82	0
1	SEP	F	431	10/11	0.86	0.22	-	74,79,89,90	0
1	SEP	A	431	10/11	0.89	0.18	-	78,83,94,95	0
1	SEP	B	431	10/11	0.85	0.23	-	81,88,100,102	0

6.3 Carbohydrates [i](#)

There are no carbohydrates in this entry.

6.4 Ligands ⓘ

In the following table, the Atoms column lists the number of modelled atoms in the group and the number defined in the chemical component dictionary. LLDF column lists the quality of electron density of the group with respect to its neighbouring residues in protein, DNA or RNA chains. The B-factors column lists the minimum, median, 95th percentile and maximum values of B factors of atoms in the group. The column labelled 'Q < 0.9' lists the number of atoms with occupancy less than 0.9.

Mol	Type	Chain	Res	Atoms	RSCC	RSR	LLDF	B-factors(Å ²)	Q<0.9
3	MG	D	701	1/1	0.80	0.85	28.68	61,61,61,61	0
3	MG	E	701	1/1	0.92	0.47	6.76	49,49,49,49	0
3	MG	B	701	1/1	0.70	0.52	6.08	84,84,84,84	0
3	MG	F	801	1/1	0.50	0.38	5.15	31,31,31,31	0
3	MG	B	527	1/1	0.28	0.33	4.80	29,29,29,29	0
3	MG	F	702	1/1	0.93	0.30	2.51	80,80,80,80	0
2	ATP	F	901	31/31	0.89	0.25	1.20	70,79,84,85	0
2	ATP	D	901	31/31	0.95	0.21	0.86	50,59,61,63	0
2	ATP	B	901	31/31	0.92	0.23	0.56	69,73,77,78	0
2	ATP	A	901	31/31	0.88	0.28	0.43	70,82,84,85	0
2	ATP	E	901	31/31	0.91	0.23	0.05	63,70,77,77	0
2	ATP	A	903	31/31	0.90	0.19	-0.24	28,47,55,55	0
2	ATP	D	903	31/31	0.91	0.16	-0.24	10,17,27,30	0
2	ATP	C	903	31/31	0.87	0.20	-0.32	32,33,49,53	0
2	ATP	C	901	31/31	0.94	0.17	-0.34	41,44,53,56	0
2	ATP	B	903	31/31	0.90	0.17	-0.35	57,66,69,69	0
3	MG	A	802	1/1	0.90	0.25	-0.39	75,75,75,75	0
2	ATP	F	903	31/31	0.94	0.15	-0.57	10,12,19,19	0
2	ATP	E	903	31/31	0.95	0.14	-0.59	9,13,21,25	0
3	MG	D	702	1/1	0.87	0.29	-	75,75,75,75	0
3	MG	C	801	1/1	0.56	0.51	-	56,56,56,56	0
3	MG	E	702	1/1	0.94	0.36	-	85,85,85,85	0
3	MG	F	701	1/1	0.87	0.60	-	54,54,54,54	0
3	MG	B	801	1/1	0.61	0.51	-	69,69,69,69	0
3	MG	C	520	1/1	0.67	0.42	-	99,99,99,99	0
3	MG	A	701	1/1	0.84	0.38	-	85,85,85,85	0
3	MG	A	801	1/1	0.58	0.56	-	64,64,64,64	0
3	MG	F	802	1/1	0.86	0.56	-	91,91,91,91	0
3	MG	D	802	1/1	0.77	0.37	-	35,35,35,35	0
3	MG	E	801	1/1	0.87	0.45	-	73,73,73,73	0

6.5 Other polymers ⓘ

There are no such residues in this entry.