



Full wwPDB X-ray Structure Validation Report ⓘ

Oct 23, 2017 – 08:39 AM EDT

PDB ID : 3K22
Title : Glucocorticoid Receptor with Bound alaninamide 10 with TIF2 peptide
Authors : Biggadike, K.B.; McLay, I.M.; Madauss, K.P.; Williams, S.P.; Bledsoe, R.K.
Deposited on : unknown
Resolution : 2.10 Å(reported)

This is a Full wwPDB X-ray Structure Validation Report for a publicly released PDB entry.

We welcome your comments at validation@mail.wwpdb.org

A user guide is available at

<http://wwpdb.org/validation/2016/XrayValidationReportHelp>

with specific help available everywhere you see the ⓘ symbol.

The following versions of software and data (see [references ⓘ](#)) were used in the production of this report:

MolProbity : 4.02b-467
Mogul : 1.7.2 (RC1), CSD as538be (2017)
Xtriage (Phenix) : 1.9-1692
EDS : rb-20030345
Percentile statistics : 20161228.v01 (using entries in the PDB archive December 28th 2016)
Refmac : 5.8.0135
CCP4 : 6.5.0
Ideal geometry (proteins) : Engh & Huber (2001)
Ideal geometry (DNA, RNA) : Parkinson et al. (1996)
Validation Pipeline (wwPDB-VP) : rb-20030345

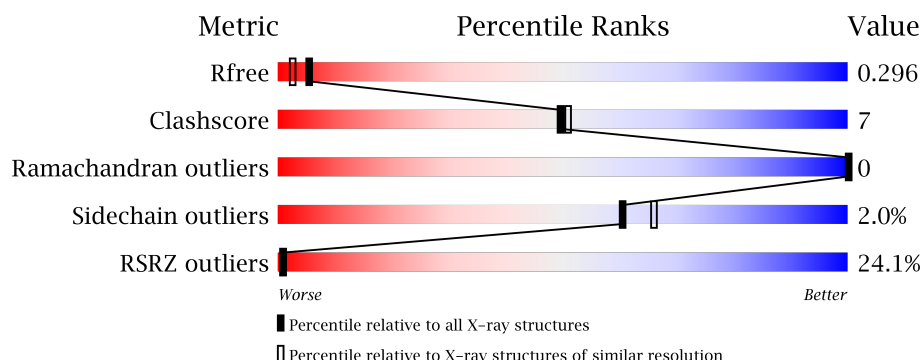
1 Overall quality at a glance ⓘ

The following experimental techniques were used to determine the structure:

X-RAY DIFFRACTION

The reported resolution of this entry is 2.10 Å.

Percentile scores (ranging between 0-100) for global validation metrics of the entry are shown in the following graphic. The table shows the number of entries on which the scores are based.



Metric	Whole archive (#Entries)	Similar resolution (#Entries, resolution range(Å))
R_{free}	100719	4243 (2.10-2.10)
Clashscore	112137	4788 (2.10-2.10)
Ramachandran outliers	110173	4740 (2.10-2.10)
Sidechain outliers	110143	4741 (2.10-2.10)
RSRZ outliers	101464	4275 (2.10-2.10)

The table below summarises the geometric issues observed across the polymeric chains and their fit to the electron density. The red, orange, yellow and green segments on the lower bar indicate the fraction of residues that contain outliers for ≥ 3 , 2, 1 and 0 types of geometric quality criteria. A grey segment represents the fraction of residues that are not modelled. The numeric value for each fraction is indicated below the corresponding segment, with a dot representing fractions $\leq 5\%$. The upper red bar (where present) indicates the fraction of residues that have poor fit to the electron density. The numeric value is given above the bar.

Mol	Chain	Length	Quality of chain
1	A	259	<div> <div>22%</div> <div> <div></div> <div>85%</div> <div>11%</div> <div>..</div> </div> </div>
1	B	259	<div> <div>25%</div> <div> <div></div> <div>86%</div> <div>9%</div> <div>..</div> </div> </div>
2	D	12	<div> <div>33%</div> <div> <div></div> <div>75%</div> <div>25%</div> </div> </div>
2	H	12	<div> <div>8%</div> <div> <div></div> <div>92%</div> <div>8%</div> </div> </div>

The following table lists non-polymeric compounds, carbohydrate monomers and non-standard residues in protein, DNA, RNA chains that are outliers for geometric or electron-density-fit criteria.

ria:

Mol	Type	Chain	Res	Chirality	Geometry	Clashes	Electron density
3	JZS	B	1	-	-	X	-
4	JZR	A	1731	X	-	-	X
4	JZR	B	1731	X	-	-	X
4	JZR	B	778	-	-	-	X

2 Entry composition

There are 5 unique types of molecules in this entry. The entry contains 4352 atoms, of which 0 are hydrogens and 0 are deuteriums.

In the tables below, the ZeroOcc column contains the number of atoms modelled with zero occupancy, the AltConf column contains the number of residues with at least one atom in alternate conformation and the Trace column contains the number of residues modelled with at most 2 atoms.

- Molecule 1 is a protein called Glucocorticoid receptor.

Mol	Chain	Residues	Atoms					ZeroOcc	AltConf	Trace
1	A	250	Total	C	N	O	S	0	0	0
			2017	1306	331	364	16			
1	B	250	Total	C	N	O	S	0	0	0
			1979	1289	324	349	17			

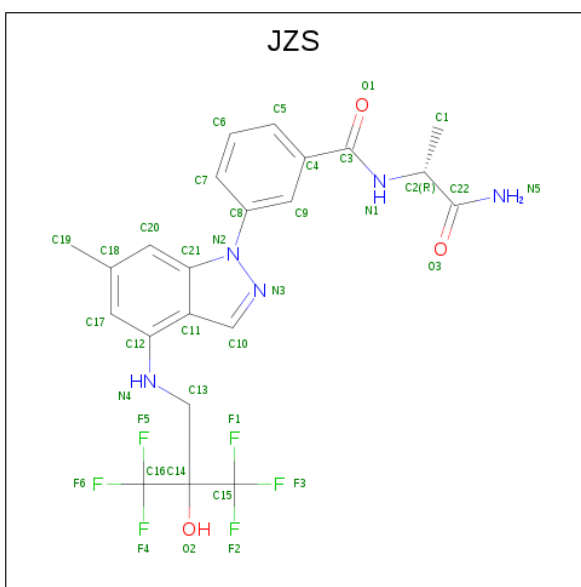
There are 8 discrepancies between the modelled and reference sequences:

Chain	Residue	Modelled	Actual	Comment	Reference
A	519	GLY	-	EXPRESSION TAG	UNP P04150
A	520	SER	-	EXPRESSION TAG	UNP P04150
A	602	TYR	PHE	ENGINEERED	UNP P04150
A	638	GLY	CYS	ENGINEERED	UNP P04150
B	519	GLY	-	EXPRESSION TAG	UNP P04150
B	520	SER	-	EXPRESSION TAG	UNP P04150
B	602	TYR	PHE	ENGINEERED	UNP P04150
B	638	GLY	CYS	ENGINEERED	UNP P04150

- Molecule 2 is a protein called Transcriptional Intermediary Factor 2.

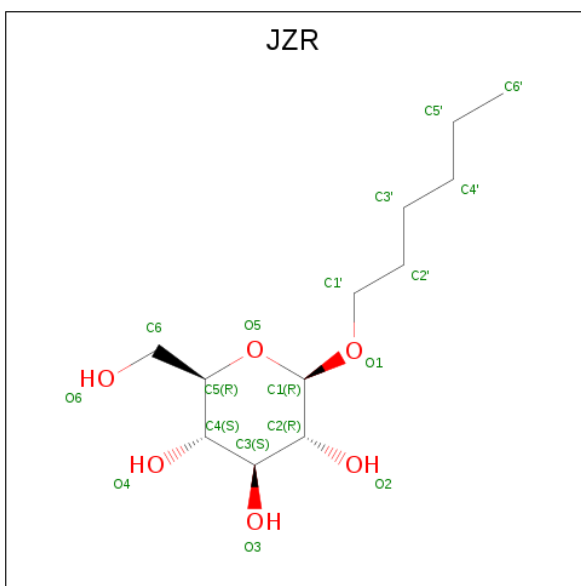
Mol	Chain	Residues	Atoms				ZeroOcc	AltConf	Trace
2	H	11	Total	C	N	O	0	0	0
			90	58	14	18			
2	D	12	Total	C	N	O	0	0	0
			96	62	17	17			

- Molecule 3 is N-[(1R)-2-amino-1-methyl-2-oxoethyl]-3-(6-methyl-4-{[3,3,3-trifluoro-2-hydroxy-2-(trifluoromethyl)propyl]amino}-1H-indazol-1-yl)benzamide (three-letter code: JZS) (formula: C₂₂H₂₁F₆N₅O₃).



Mol	Chain	Residues	Atoms					ZeroOcc	AltConf
3	A	1	Total	C	F	N	O	0	0
			36	22	6	5	3		
3	B	1	Total	C	F	N	O	0	0
			36	22	6	5	3		

- Molecule 4 is hexyl beta-D-glucopyranoside (three-letter code: JZR) (formula: $C_{12}H_{24}O_6$).



Mol	Chain	Residues	Atoms			ZeroOcc	AltConf
4	A	1	Total	C	O	0	0
			18	12	6		
4	B	1	Total	C	O	0	0
			18	12	6		

Continued on next page...

Continued from previous page...

Mol	Chain	Residues	Atoms			ZeroOcc	AltConf
4	B	1	Total	C	O	0	0
			18	12	6		

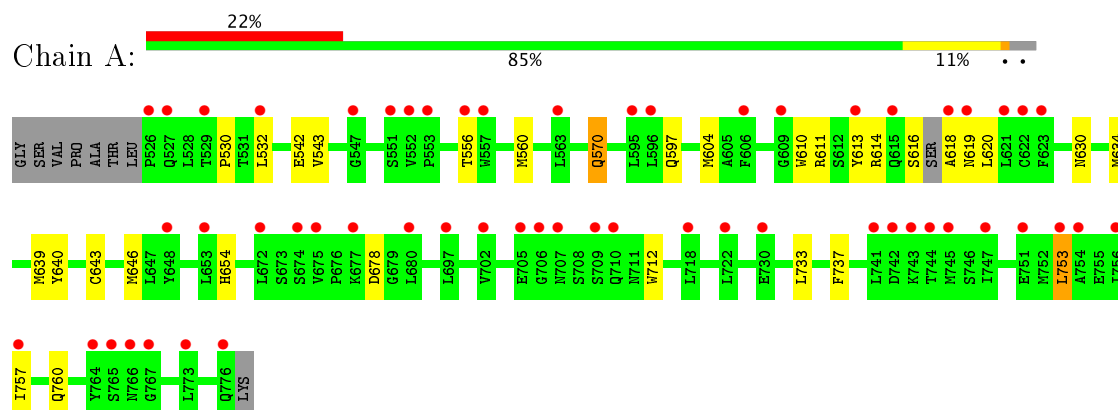
- Molecule 5 is water.

Mol	Chain	Residues	Atoms		ZeroOcc	AltConf
5	A	31	Total	O	0	0
			31	31		
5	B	13	Total	O	0	0
			13	13		

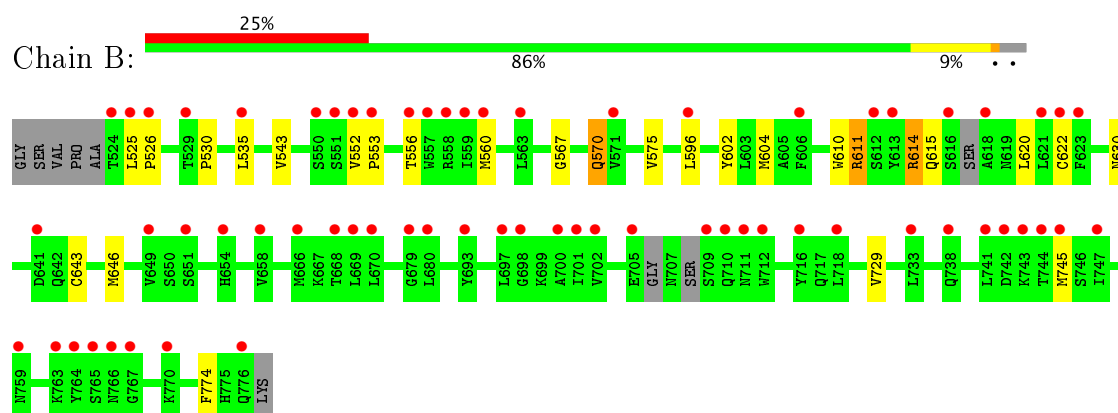
3 Residue-property plots

These plots are drawn for all protein, RNA and DNA chains in the entry. The first graphic for a chain summarises the proportions of the various outlier classes displayed in the second graphic. The second graphic shows the sequence view annotated by issues in geometry and electron density. Residues are color-coded according to the number of geometric quality criteria for which they contain at least one outlier: green = 0, yellow = 1, orange = 2 and red = 3 or more. A red dot above a residue indicates a poor fit to the electron density ($RSRZ > 2$). Stretches of 2 or more consecutive residues without any outlier are shown as a green connector. Residues present in the sample, but not in the model, are shown in grey.

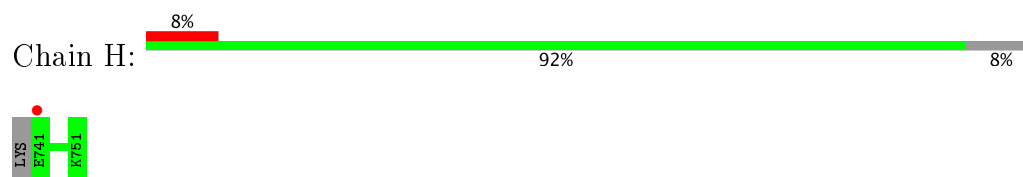
• Molecule 1: Glucocorticoid receptor



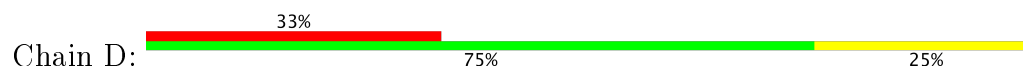
• Molecule 1: Glucocorticoid receptor

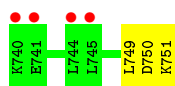


• Molecule 2: Transcriptional Intermediary Factor 2



• Molecule 2: Transcriptional Intermediary Factor 2





4 Data and refinement statistics

Property	Value	Source
Space group	P 61	Depositor
Cell constants a, b, c, α , β , γ	127.60 Å 127.60 Å 78.23 Å 90.00° 90.00° 120.00°	Depositor
Resolution (Å)	19.85 – 2.10 19.24 – 2.10	Depositor EDS
% Data completeness (in resolution range)	100.0 (19.85-2.10) 97.0 (19.24-2.10)	Depositor EDS
R_{merge}	0.04	Depositor
R_{sym}	(Not available)	Depositor
$\langle I/\sigma(I) \rangle$ ¹	4.98 (at 2.09 Å)	Xtriage
Refinement program	REFMAC	Depositor
R, R_{free}	0.211 , 0.255 0.298 , 0.296	Depositor DCC
R_{free} test set	2886 reflections (7.03%)	DCC
Wilson B-factor (Å ²)	45.9	Xtriage
Anisotropy	0.099	Xtriage
Bulk solvent k_{sol} (e/Å ³), B_{sol} (Å ²)	0.38 , 53.6	EDS
L-test for twinning ²	$\langle L \rangle = 0.50$, $\langle L^2 \rangle = 0.34$	Xtriage
Estimated twinning fraction	0.025 for h,-h-k,-l	Xtriage
F_o, F_c correlation	0.90	EDS
Total number of atoms	4352	wwPDB-VP
Average B, all atoms (Å ²)	58.0	wwPDB-VP

Xtriage's analysis on translational NCS is as follows: *The largest off-origin peak in the Patterson function is 4.08% of the height of the origin peak. No significant pseudotranslation is detected.*

¹Intensities estimated from amplitudes.

²Theoretical values of $\langle |L| \rangle$, $\langle L^2 \rangle$ for acentric reflections are 0.5, 0.333 respectively for untwinned datasets, and 0.375, 0.2 for perfectly twinned datasets.

5 Model quality [i](#)

5.1 Standard geometry [i](#)

Bond lengths and bond angles in the following residue types are not validated in this section: JZS, JZR

The Z score for a bond length (or angle) is the number of standard deviations the observed value is removed from the expected value. A bond length (or angle) with $|Z| > 5$ is considered an outlier worth inspection. RMSZ is the root-mean-square of all Z scores of the bond lengths (or angles).

Mol	Chain	Bond lengths		Bond angles	
		RMSZ	$\# Z > 5$	RMSZ	$\# Z > 5$
1	A	0.36	0/2061	0.47	0/2789
1	B	0.35	0/2022	0.46	0/2741
2	D	0.39	0/96	0.52	0/127
2	H	0.38	0/90	0.51	0/119
All	All	0.36	0/4269	0.47	0/5776

There are no bond length outliers.

There are no bond angle outliers.

There are no chirality outliers.

There are no planarity outliers.

5.2 Too-close contacts [i](#)

In the following table, the Non-H and H(model) columns list the number of non-hydrogen atoms and hydrogen atoms in the chain respectively. The H(added) column lists the number of hydrogen atoms added and optimized by MolProbity. The Clashes column lists the number of clashes within the asymmetric unit, whereas Symm-Clashes lists symmetry related clashes.

Mol	Chain	Non-H	H(model)	H(added)	Clashes	Symm-Clashes
1	A	2017	0	2013	26	1
1	B	1979	0	1949	32	1
2	D	96	0	97	2	0
2	H	90	0	87	0	0
3	A	36	0	21	5	0
3	B	36	0	21	13	0
4	A	18	0	24	1	0
4	B	36	0	48	2	0
5	A	31	0	0	0	0

Continued on next page...

Continued from previous page...

Mol	Chain	Non-H	H(model)	H(added)	Clashes	Symm-Clashes
5	B	13	0	0	0	0
All	All	4352	0	4260	57	1

The all-atom clashscore is defined as the number of clashes found per 1000 atoms (including hydrogen atoms). The all-atom clashscore for this structure is 7.

All (57) close contacts within the same asymmetric unit are listed below, sorted by their clash magnitude.

Atom-1	Atom-2	Interatomic distance (Å)	Clash overlap (Å)
1:B:604:MET:HE3	3:B:1:JZS:H9	1.43	0.97
1:A:570:GLN:HG2	3:A:1:JZS:HN5	1.37	0.89
1:B:604:MET:CE	3:B:1:JZS:H9	2.03	0.88
1:A:530:PRO:HB3	1:B:535:LEU:HD12	1.62	0.81
1:A:570:GLN:HG2	3:A:1:JZS:N5	2.02	0.74
1:B:570:GLN:HG3	3:B:1:JZS:N5	2.01	0.74
1:A:604:MET:HE2	3:A:1:JZS:H9	1.70	0.73
1:A:604:MET:CE	3:A:1:JZS:H9	2.22	0.70
1:A:556:THR:HG22	1:A:560:MET:HE2	1.76	0.67
1:B:570:GLN:HG2	3:B:1:JZS:C9	2.25	0.66
1:A:532:LEU:HD13	1:B:530:PRO:HD3	1.80	0.62
1:B:570:GLN:HG2	3:B:1:JZS:C3	2.30	0.61
1:A:556:THR:HG22	1:A:560:MET:CE	2.29	0.61
1:B:567:GLY:HA2	1:B:604:MET:HE1	1.82	0.60
1:A:616:SER:HG	1:A:618:ALA:N	2.00	0.60
1:A:634:MET:HE1	1:A:640:TYR:HA	1.85	0.59
1:A:610:TRP:CZ2	1:A:614:ARG:HD2	2.39	0.57
1:B:570:GLN:HG3	3:B:1:JZS:HN5	1.69	0.57
1:B:570:GLN:HG2	3:B:1:JZS:C4	2.34	0.56
1:B:604:MET:HE2	3:B:1:JZS:C21	2.37	0.54
1:B:556:THR:HG22	1:B:560:MET:CE	2.38	0.54
1:B:556:THR:HG22	1:B:560:MET:HE2	1.90	0.54
1:A:753:LEU:HD22	1:A:757:ILE:HD11	1.94	0.50
1:B:610:TRP:CZ2	1:B:614:ARG:HD3	2.45	0.50
1:B:604:MET:HE2	3:B:1:JZS:H9	1.92	0.50
1:B:575:VAL:HG22	1:B:596:LEU:HD13	1.95	0.49
1:A:543:VAL:HG23	1:A:611:ARG:CZ	2.43	0.49
1:B:570:GLN:HB3	1:B:604:MET:CE	2.44	0.48
1:A:620:LEU:HD22	1:A:630:ASN:HA	1.96	0.47
1:A:646:MET:HE3	4:A:1731:JZR:H6'B	1.97	0.46
1:B:604:MET:HE2	3:B:1:JZS:N2	2.29	0.46
1:B:602:TYR:CG	1:B:729:VAL:HG21	2.51	0.46

Continued on next page...

Continued from previous page...

Atom-1	Atom-2	Interatomic distance (Å)	Clash overlap (Å)
1:A:597:GLN:HB3	1:A:760:GLN:NE2	2.30	0.46
1:B:620:LEU:HD22	1:B:630:ASN:HA	1.99	0.45
1:A:634:MET:HE3	1:A:639:MET:HG3	1.99	0.45
1:A:733:LEU:HD22	1:A:737:PHE:CZ	2.52	0.44
1:B:570:GLN:HG2	1:B:604:MET:HE3	1.99	0.44
1:A:604:MET:HA	3:A:1:JZS:O1	2.18	0.44
1:B:611:ARG:HG2	1:B:622:CYS:O	2.17	0.44
1:B:745:MET:CE	4:B:1731:JZR:O3	2.66	0.44
1:A:570:GLN:HB3	1:A:604:MET:CE	2.47	0.44
1:A:753:LEU:HD22	1:A:757:ILE:CD1	2.48	0.44
1:B:596:LEU:CD1	2:D:749:LEU:HD21	2.47	0.44
1:B:604:MET:CE	3:B:1:JZS:C9	2.88	0.43
1:A:634:MET:HE1	1:A:643:CYS:HB2	1.99	0.43
1:A:619:ASN:O	1:A:620:LEU:HD23	2.19	0.43
1:B:604:MET:HE3	3:B:1:JZS:C9	2.32	0.42
1:B:525:LEU:N	1:B:526:PRO:CD	2.81	0.42
1:A:613:TYR:CE1	1:A:654:HIS:HA	2.54	0.42
1:B:552:VAL:HG13	1:B:553:PRO:HD2	2.01	0.41
2:D:750:ASP:O	2:D:751:LYS:C	2.58	0.41
1:B:643:CYS:HA	1:B:646:MET:HE3	2.02	0.41
1:A:570:GLN:HE21	1:A:570:GLN:HB2	1.59	0.41
1:B:570:GLN:CG	3:B:1:JZS:C3	2.99	0.41
1:B:602:TYR:CD2	1:B:729:VAL:HG21	2.56	0.41
1:A:737:PHE:CD2	1:A:757:ILE:HG23	2.56	0.41
1:B:745:MET:HE1	4:B:1731:JZR:O3	2.21	0.40

All (1) symmetry-related close contacts are listed below. The label for Atom-2 includes the symmetry operator and encoded unit-cell translations to be applied.

Atom-1	Atom-2	Interatomic distance (Å)	Clash overlap (Å)
1:A:712:TRP:NE1	1:B:774:PHE:O[4_565]	2.13	0.07

5.3 Torsion angles ⓘ

5.3.1 Protein backbone ⓘ

In the following table, the Percentiles column shows the percent Ramachandran outliers of the chain as a percentile score with respect to all X-ray entries followed by that with respect to entries of similar resolution.

The Analysed column shows the number of residues for which the backbone conformation was analysed, and the total number of residues.

Mol	Chain	Analysed	Favoured	Allowed	Outliers	Percentiles	
1	A	246/259 (95%)	237 (96%)	9 (4%)	0	100	100
1	B	243/259 (94%)	239 (98%)	4 (2%)	0	100	100
2	D	10/12 (83%)	9 (90%)	1 (10%)	0	100	100
2	H	9/12 (75%)	9 (100%)	0	0	100	100
All	All	508/542 (94%)	494 (97%)	14 (3%)	0	100	100

There are no Ramachandran outliers to report.

5.3.2 Protein sidechains ⓘ

In the following table, the Percentiles column shows the percent sidechain outliers of the chain as a percentile score with respect to all X-ray entries followed by that with respect to entries of similar resolution.

The Analysed column shows the number of residues for which the sidechain conformation was analysed, and the total number of residues.

Mol	Chain	Analysed	Rotameric	Outliers	Percentiles	
1	A	220/236 (93%)	216 (98%)	4 (2%)	64	70
1	B	208/236 (88%)	203 (98%)	5 (2%)	54	59
2	D	9/11 (82%)	9 (100%)	0	100	100
2	H	8/11 (73%)	8 (100%)	0	100	100
All	All	445/494 (90%)	436 (98%)	9 (2%)	60	66

All (9) residues with a non-rotameric sidechain are listed below:

Mol	Chain	Res	Type
1	A	542	GLU
1	A	570	GLN
1	A	678	ASP
1	A	753	LEU
1	B	543	VAL
1	B	570	GLN
1	B	611	ARG
1	B	614	ARG
1	B	615	GLN

Some sidechains can be flipped to improve hydrogen bonding and reduce clashes. All (4) such sidechains are listed below:

Mol	Chain	Res	Type
1	A	570	GLN
1	A	760	GLN
1	B	588	HIS
1	B	760	GLN

5.3.3 RNA [i](#)

There are no RNA molecules in this entry.

5.4 Non-standard residues in protein, DNA, RNA chains [i](#)

There are no non-standard protein/DNA/RNA residues in this entry.

5.5 Carbohydrates [i](#)

There are no carbohydrates in this entry.

5.6 Ligand geometry [i](#)

5 ligands are modelled in this entry.

In the following table, the Counts columns list the number of bonds (or angles) for which Mogul statistics could be retrieved, the number of bonds (or angles) that are observed in the model and the number of bonds (or angles) that are defined in the Chemical Component Dictionary. The Link column lists molecule types, if any, to which the group is linked. The Z score for a bond length (or angle) is the number of standard deviations the observed value is removed from the expected value. A bond length (or angle) with $|Z| > 2$ is considered an outlier worth inspection. RMSZ is the root-mean-square of all Z scores of the bond lengths (or angles).

Mol	Type	Chain	Res	Link	Bond lengths			Bond angles		
					Counts	RMSZ	$\# Z > 2$	Counts	RMSZ	$\# Z > 2$
3	JZS	A	1	-	35,38,38	1.36	6 (17%)	51,59,59	1.25	7 (13%)
4	JZR	A	1731	-	18,18,18	0.69	1 (5%)	23,23,23	2.11	3 (13%)
3	JZS	B	1	-	35,38,38	1.35	6 (17%)	51,59,59	1.27	6 (11%)
4	JZR	B	1731	-	18,18,18	0.73	1 (5%)	23,23,23	2.24	5 (21%)
4	JZR	B	778	-	18,18,18	0.74	1 (5%)	23,23,23	0.92	1 (4%)

In the following table, the Chirals column lists the number of chiral outliers, the number of chiral

centers analysed, the number of these observed in the model and the number defined in the Chemical Component Dictionary. Similar counts are reported in the Torsion and Rings columns. '-' means no outliers of that kind were identified.

Mol	Type	Chain	Res	Link	Chirals	Torsions	Rings
3	JZS	A	1	-	-	0/40/40/40	0/3/3/3
4	JZR	A	1731	-	1/1/5/5	0/9/29/29	0/1/1/1
3	JZS	B	1	-	-	0/40/40/40	0/3/3/3
4	JZR	B	1731	-	1/1/5/5	0/9/29/29	0/1/1/1
4	JZR	B	778	-	-	0/9/29/29	0/1/1/1

All (15) bond length outliers are listed below:

Mol	Chain	Res	Type	Atoms	Z	Observed(Å)	Ideal(Å)
3	B	1	JZS	N3-N2	-3.18	1.33	1.39
3	A	1	JZS	N3-N2	-3.17	1.33	1.39
3	A	1	JZS	C16-C14	-2.98	1.49	1.54
3	B	1	JZS	C15-C14	-2.92	1.49	1.54
3	A	1	JZS	C15-C14	-2.67	1.50	1.54
3	A	1	JZS	C12-C11	-2.67	1.38	1.43
3	B	1	JZS	C8-N2	-2.62	1.38	1.44
3	B	1	JZS	C12-C11	-2.59	1.38	1.43
3	A	1	JZS	C8-N2	-2.55	1.39	1.44
3	B	1	JZS	C16-C14	-2.55	1.50	1.54
3	A	1	JZS	C4-C3	-2.05	1.45	1.50
3	B	1	JZS	C4-C3	-2.04	1.45	1.50
4	A	1731	JZR	O1-C1	2.49	1.44	1.40
4	B	1731	JZR	O1-C1	2.49	1.44	1.40
4	B	778	JZR	O1-C1	2.59	1.44	1.40

All (22) bond angle outliers are listed below:

Mol	Chain	Res	Type	Atoms	Z	Observed(°)	Ideal(°)
3	B	1	JZS	C17-C12-C11	-3.46	114.84	119.06
3	A	1	JZS	C17-C12-C11	-3.28	115.06	119.06
3	A	1	JZS	O2-C14-C13	-2.37	108.47	112.92
3	B	1	JZS	O2-C14-C13	-2.25	108.70	112.92
3	A	1	JZS	C14-C13-N4	-2.09	108.50	112.19
3	A	1	JZS	C20-C21-C11	2.00	123.95	120.92
3	B	1	JZS	O1-C3-N1	2.07	126.24	122.46
3	A	1	JZS	C5-C4-C9	2.31	121.94	119.23
3	B	1	JZS	C5-C4-C9	2.36	122.01	119.23
4	B	1731	JZR	O5-C5-C4	2.36	114.02	109.66
3	A	1	JZS	C11-C12-N4	2.47	122.70	119.98

Continued on next page...

Continued from previous page...

Mol	Chain	Res	Type	Atoms	Z	Observed(°)	Ideal(°)
3	B	1	JZS	C11-C12-N4	2.53	122.77	119.98
3	A	1	JZS	C20-C18-C17	2.66	122.39	118.81
3	B	1	JZS	C20-C18-C17	2.68	122.42	118.81
4	B	778	JZR	O1-C1-C2	2.78	112.77	108.23
4	B	1731	JZR	C1-O5-C5	3.73	120.74	113.72
4	A	1731	JZR	O5-C1-O1	4.23	120.06	110.02
4	B	1731	JZR	O5-C1-O1	4.39	120.45	110.02
4	A	1731	JZR	O5-C1-C2	4.72	119.40	110.30
4	B	1731	JZR	O5-C1-C2	5.65	121.19	110.30
4	B	1731	JZR	O1-C1-C2	5.92	117.89	108.23
4	A	1731	JZR	O1-C1-C2	7.07	119.77	108.23

All (2) chirality outliers are listed below:

Mol	Chain	Res	Type	Atom
4	B	1731	JZR	C1
4	A	1731	JZR	C1

There are no torsion outliers.

There are no ring outliers.

4 monomers are involved in 21 short contacts:

Mol	Chain	Res	Type	Clashes	Symm-Clashes
3	A	1	JZS	5	0
4	A	1731	JZR	1	0
3	B	1	JZS	13	0
4	B	1731	JZR	2	0

5.7 Other polymers ⓘ

There are no such residues in this entry.











5.8 Polymer linkage issues ⓘ

There are no chain breaks in this entry.

6 Fit of model and data

6.1 Protein, DNA and RNA chains

In the following table, the column labelled ‘#RSRZ> 2’ contains the number (and percentage) of RSRZ outliers, followed by percent RSRZ outliers for the chain as percentile scores relative to all X-ray entries and entries of similar resolution. The OWAB column contains the minimum, median, 95th percentile and maximum values of the occupancy-weighted average B-factor per residue. The column labelled ‘Q< 0.9’ lists the number of (and percentage) of residues with an average occupancy less than 0.9.

Mol	Chain	Analysed	<RSRZ>	#RSRZ>2	OWAB(Å ²)	Q<0.9
1	A	250/259 (96%)	1.41	56 (22%)  	42, 56, 71, 80	1 (0%)
1	B	250/259 (96%)	1.50	65 (26%)  	45, 59, 74, 83	0
2	D	12/12 (100%)	1.52	4 (33%)  	58, 62, 69, 71	0
2	H	11/12 (91%)	1.40	1 (9%)  	58, 61, 67, 69	0
All	All	523/542 (96%)	1.46	126 (24%)  	42, 58, 73, 83	1 (0%)

All (126) RSRZ outliers are listed below:

Mol	Chain	Res	Type	RSRZ
1	B	524	THR	9.6
1	A	526	PRO	6.7
1	A	764	TYR	6.6
1	B	764	TYR	5.9
1	B	616	SER	5.7
1	B	709	SER	5.6
2	D	740	LYS	5.4
1	B	525	LEU	5.2
1	B	702	VAL	5.1
1	A	741	LEU	4.9
1	B	767	GLY	4.6
1	A	706	GLY	4.4
1	A	745	MET	4.4
1	B	553	PRO	4.2
1	A	553	PRO	4.1
1	A	767	GLY	4.1
1	B	526	PRO	4.1
1	A	615	GLN	4.1
1	B	744	THR	4.0
1	B	705	GLU	4.0
1	A	776	GLN	4.0

Continued on next page...

Continued from previous page...

Mol	Chain	Res	Type	RSRZ
1	B	551	SER	4.0
2	H	741	GLU	4.0
1	B	745	MET	3.9
1	B	697	LEU	3.8
1	A	529	THR	3.7
1	A	619	ASN	3.7
1	A	743	LYS	3.6
1	B	559	ILE	3.6
1	A	527	GLN	3.6
1	A	744	THR	3.6
1	B	743	LYS	3.5
1	A	552	VAL	3.5
1	B	747	ILE	3.5
1	B	623	PHE	3.4
1	B	596	LEU	3.4
1	A	556	THR	3.3
1	B	710	GLN	3.3
1	B	765	SER	3.2
1	B	742	ASP	3.2
1	B	718	LEU	3.2
1	B	741	LEU	3.2
1	B	618	ALA	3.1
1	B	738	GLN	3.0
1	B	621	LEU	3.0
1	B	622	CYS	3.0
1	B	670	LEU	3.0
1	A	596	LEU	2.9
1	B	763	LYS	2.9
1	A	551	SER	2.9
1	B	658	VAL	2.9
1	A	618	ALA	2.9
1	A	697	LEU	2.8
1	B	552	VAL	2.8
1	B	612	SER	2.8
1	B	557	TRP	2.8
1	B	641	ASP	2.8
1	B	606	PHE	2.8
1	A	622	CYS	2.8
1	B	698	GLY	2.8
1	B	701	ILE	2.8
1	A	609	GLY	2.8
1	A	718	LEU	2.7

Continued on next page...

Continued from previous page...

Mol	Chain	Res	Type	RSRZ
1	B	560	MET	2.7
1	A	606	PHE	2.7
1	B	759	ASN	2.7
1	A	621	LEU	2.7
1	B	666	MET	2.7
1	A	766	ASN	2.7
1	B	529	THR	2.6
1	A	595	LEU	2.6
1	A	677	LYS	2.6
1	A	623	PHE	2.6
1	A	557	TRP	2.6
1	A	672	LEU	2.6
1	A	742	ASP	2.6
1	A	702	VAL	2.5
1	A	747	ILE	2.5
1	B	550	SER	2.5
1	A	680	LEU	2.5
1	B	733	LEU	2.5
1	A	756	ILE	2.5
1	B	558	ARG	2.4
1	A	675	VAL	2.4
1	B	716	TYR	2.4
1	B	711	ASN	2.4
1	A	705	GLU	2.4
1	B	680	LEU	2.4
2	D	741	GLU	2.3
1	A	773	LEU	2.3
1	B	776	GLN	2.3
1	B	651	SER	2.3
1	A	751	GLU	2.3
1	B	556	THR	2.3
1	A	653	LEU	2.3
1	B	700	ALA	2.2
2	D	744	LEU	2.2
1	A	710	GLN	2.2
1	A	730	GLU	2.2
1	B	668	THR	2.2
1	A	532	LEU	2.2
1	A	707	ASN	2.2
1	A	674	SER	2.2
1	B	770	LYS	2.2
1	B	766	ASN	2.2

Continued on next page...

Continued from previous page...

Mol	Chain	Res	Type	RSRZ
1	A	563	LEU	2.2
1	A	709	SER	2.2
1	A	757	ILE	2.2
1	B	563	LEU	2.2
1	B	669	LEU	2.2
1	A	547	GLY	2.2
1	B	712	TRP	2.1
1	A	753	LEU	2.1
1	B	571	VAL	2.1
1	B	693	TYR	2.1
1	A	722	LEU	2.1
1	A	765	SER	2.1
1	B	649	VAL	2.1
1	B	654	HIS	2.1
1	B	613	TYR	2.1
1	B	679	GLY	2.0
2	D	745	LEU	2.0
1	A	613	TYR	2.0
1	A	648	TYR	2.0
1	A	754	ALA	2.0
1	B	535	LEU	2.0

6.2 Non-standard residues in protein, DNA, RNA chains ⓘ

There are no non-standard protein/DNA/RNA residues in this entry.

6.3 Carbohydrates ⓘ

There are no carbohydrates in this entry.

6.4 Ligands ⓘ

In the following table, the Atoms column lists the number of modelled atoms in the group and the number defined in the chemical component dictionary. LLDF column lists the quality of electron density of the group with respect to its neighbouring residues in protein, DNA or RNA chains. The B-factors column lists the minimum, median, 95th percentile and maximum values of B factors of atoms in the group. The column labelled 'Q< 0.9' lists the number of atoms with occupancy less than 0.9.

Mol	Type	Chain	Res	Atoms	RSCC	RSR	LLDF	B-factors(Å ²)	Q<0.9
4	JZR	B	778	18/18	0.12	0.48	4.47	65,70,71,71	0

Continued on next page...

Continued from previous page...

Mol	Type	Chain	Res	Atoms	RSCC	RSR	LLDF	B-factors(\AA^2)	Q<0.9
4	JZR	B	1731	18/18	0.61	0.38	2.60	80,82,83,83	0
4	JZR	A	1731	18/18	0.51	0.39	2.35	69,72,73,74	0
3	JZS	B	1	36/36	0.93	0.14	-0.96	39,42,46,47	0
3	JZS	A	1	36/36	0.91	0.14	-1.00	41,42,45,46	0

6.5 Other polymers [i](#)

There are no such residues in this entry.