



Full wwPDB X-ray Structure Validation Report ⓘ

Oct 28, 2017 – 08:17 AM EDT

PDB ID : 3K23
Title : Glucocorticoid Receptor with Bound D-prolinamide 11
Authors : Biggadike, K.B.; McLay, I.M.; Madauss, K.P.; Williams, S.P.; Bledsoe, R.K.
Deposited on : unknown
Resolution : 3.00 Å(reported)

This is a Full wwPDB X-ray Structure Validation Report for a publicly released PDB entry.

We welcome your comments at validation@mail.wwpdb.org

A user guide is available at

<http://wwpdb.org/validation/2016/XrayValidationReportHelp>

with specific help available everywhere you see the ⓘ symbol.

The following versions of software and data (see [references ⓘ](#)) were used in the production of this report:

MolProbity : 4.02b-467
Mogul : 1.7.2 (RC1), CSD as538be (2017)
Xtriage (Phenix) : 1.9-1692
EDS : rb-20030345
Percentile statistics : 20161228.v01 (using entries in the PDB archive December 28th 2016)
Refmac : 5.8.0135
CCP4 : 6.5.0
Ideal geometry (proteins) : Engh & Huber (2001)
Ideal geometry (DNA, RNA) : Parkinson et al. (1996)
Validation Pipeline (wwPDB-VP) : rb-20030345

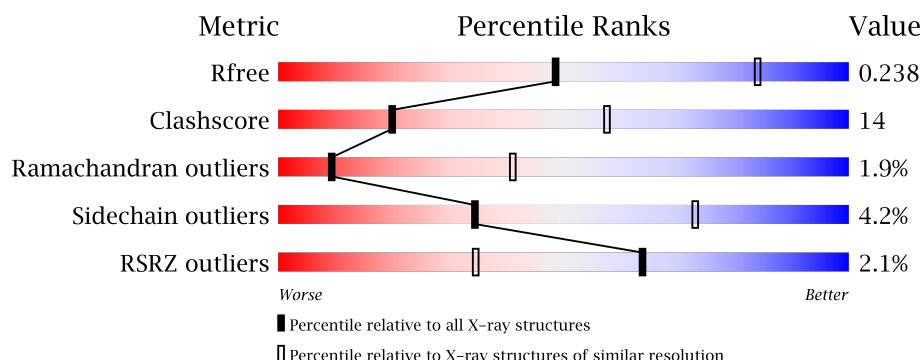
1 Overall quality at a glance

The following experimental techniques were used to determine the structure:

X-RAY DIFFRACTION

The reported resolution of this entry is 3.00 Å.

Percentile scores (ranging between 0-100) for global validation metrics of the entry are shown in the following graphic. The table shows the number of entries on which the scores are based.



Metric	Whole archive (#Entries)	Similar resolution (#Entries, resolution range(Å))
R_{free}	100719	1692 (3.00-3.00)
Clashscore	112137	2037 (3.00-3.00)
Ramachandran outliers	110173	1973 (3.00-3.00)
Sidechain outliers	110143	1976 (3.00-3.00)
RSRZ outliers	101464	1716 (3.00-3.00)

The table below summarises the geometric issues observed across the polymeric chains and their fit to the electron density. The red, orange, yellow and green segments on the lower bar indicate the fraction of residues that contain outliers for ≥ 3 , 2, 1 and 0 types of geometric quality criteria. A grey segment represents the fraction of residues that are not modelled. The numeric value for each fraction is indicated below the corresponding segment, with a dot representing fractions $\leq 5\%$. The upper red bar (where present) indicates the fraction of residues that have poor fit to the electron density. The numeric value is given above the bar.

Mol	Chain	Length	Quality of chain
1	A	259	<div> <div>2%</div> <div>68% 25% • 5%</div> </div>
1	B	259	<div> <div>2%</div> <div>74% 20% • 5%</div> </div>
1	C	259	<div> <div>3%</div> <div>64% 28% • 5%</div> </div>
2	D	12	<div> <div></div> <div>58% 8% 8% 25%</div> </div>
2	E	12	<div> <div></div> <div>50% 33% 17%</div> </div>

Continued on next page...

Continued from previous page...

Mol	Chain	Length	Quality of chain
2	F	12	 50% 33% 17%

2 Entry composition

There are 4 unique types of molecules in this entry. The entry contains 6158 atoms, of which 0 are hydrogens and 0 are deuteriums.

In the tables below, the ZeroOcc column contains the number of atoms modelled with zero occupancy, the AltConf column contains the number of residues with at least one atom in alternate conformation and the Trace column contains the number of residues modelled with at most 2 atoms.

- Molecule 1 is a protein called Glucocorticoid receptor.

Mol	Chain	Residues	Atoms					ZeroOcc	AltConf	Trace
1	A	245	Total	C	N	O	S	0	0	0
			1927	1249	313	350	15			
1	B	247	Total	C	N	O	S	0	0	0
			1966	1278	321	350	17			
1	C	246	Total	C	N	O	S	0	0	0
			1859	1212	308	325	14			

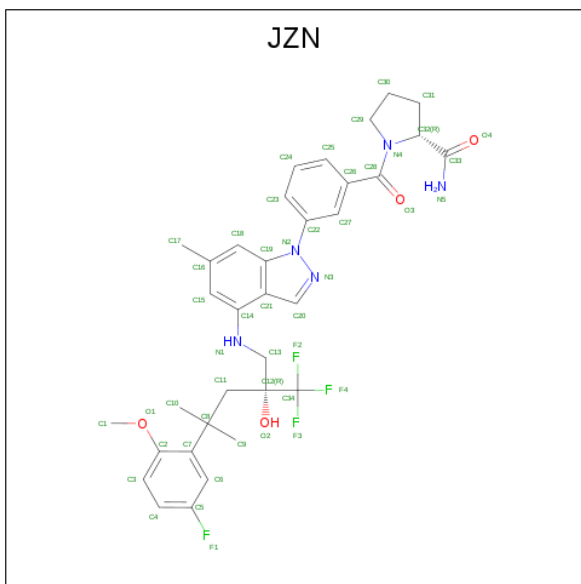
There are 12 discrepancies between the modelled and reference sequences:

Chain	Residue	Modelled	Actual	Comment	Reference
A	519	GLY	-	EXPRESSION TAG	UNP P04150
A	520	SER	-	EXPRESSION TAG	UNP P04150
A	602	TYR	PHE	ENGINEERED	UNP P04150
A	638	GLY	CYS	ENGINEERED	UNP P04150
B	519	GLY	-	EXPRESSION TAG	UNP P04150
B	520	SER	-	EXPRESSION TAG	UNP P04150
B	602	TYR	PHE	ENGINEERED	UNP P04150
B	638	GLY	CYS	ENGINEERED	UNP P04150
C	519	GLY	-	EXPRESSION TAG	UNP P04150
C	520	SER	-	EXPRESSION TAG	UNP P04150
C	602	TYR	PHE	ENGINEERED	UNP P04150
C	638	GLY	CYS	ENGINEERED	UNP P04150

- Molecule 2 is a protein called Nuclear receptor coactivator 2.

Mol	Chain	Residues	Atoms				ZeroOcc	AltConf	Trace
2	D	9	Total	C	N	O	0	0	0
			72	49	10	13			
2	E	10	Total	C	N	O	0	0	0
			74	49	11	14			
2	F	10	Total	C	N	O	0	0	0
			72	49	11	12			

- Molecule 3 is 1-{{3-(4-{{[(2R)-4-(5-fluoro-2-methoxyphenyl)-2-hydroxy-4-methyl-2-(trifluoromethyl)pentyl]amino}-6-methyl-1H-indazol-1-yl)phenyl]carbonyl}-D-prolinamide (three-letter code: JZN) (formula: C₃₄H₃₇F₄N₅O₄).



Mol	Chain	Residues	Atoms					ZeroOcc	AltConf
3	A	1	Total	C	F	N	O	0	0
			47	34	4	5	4		
3	B	1	Total	C	F	N	O	0	0
			47	34	4	5	4		
3	C	1	Total	C	F	N	O	0	0
			47	34	4	5	4		

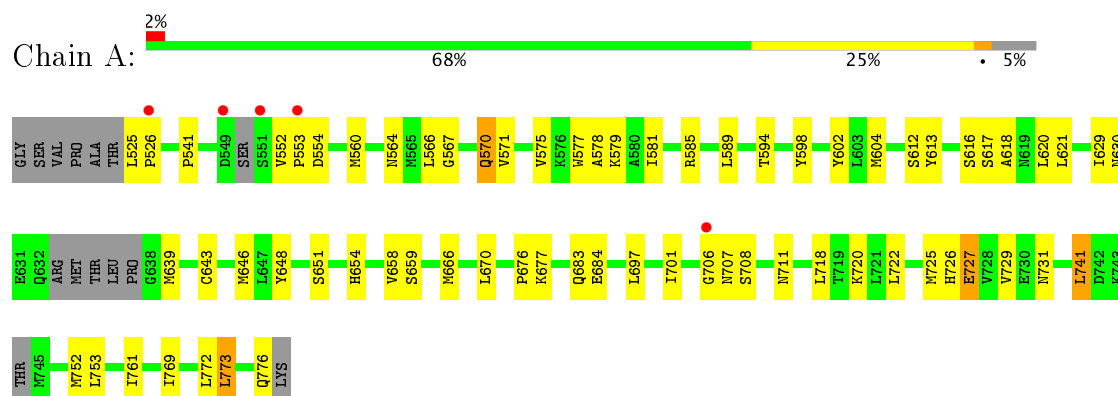
- Molecule 4 is water.

Mol	Chain	Residues	Atoms		ZeroOcc	AltConf
4	A	18	Total	O	0	0
			18	18		
4	B	18	Total	O	0	0
			18	18		
4	C	11	Total	O	0	0
			11	11		

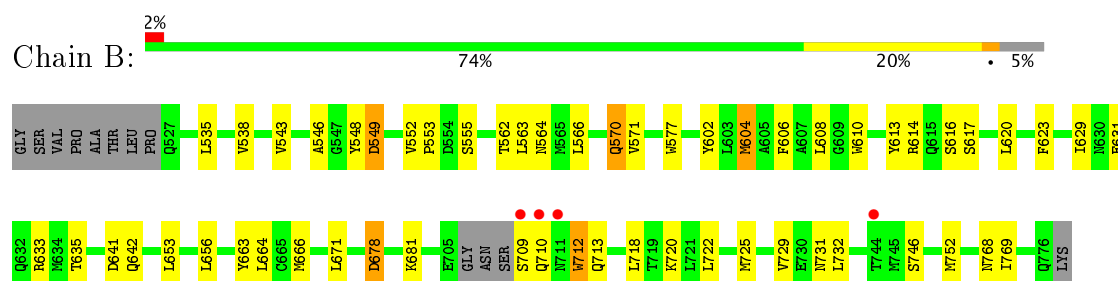
3 Residue-property plots [i](#)

These plots are drawn for all protein, RNA and DNA chains in the entry. The first graphic for a chain summarises the proportions of the various outlier classes displayed in the second graphic. The second graphic shows the sequence view annotated by issues in geometry and electron density. Residues are color-coded according to the number of geometric quality criteria for which they contain at least one outlier: green = 0, yellow = 1, orange = 2 and red = 3 or more. A red dot above a residue indicates a poor fit to the electron density ($RSRZ > 2$). Stretches of 2 or more consecutive residues without any outlier are shown as a green connector. Residues present in the sample, but not in the model, are shown in grey.

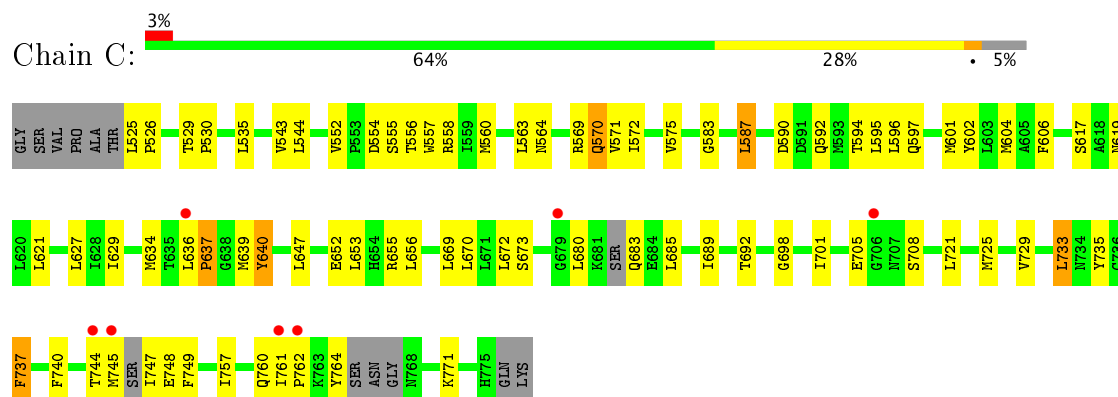
• Molecule 1: Glucocorticoid receptor



• Molecule 1: Glucocorticoid receptor



• Molecule 1: Glucocorticoid receptor



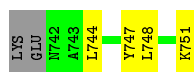
• Molecule 2: Nuclear receptor coactivator 2

Chain D:  58% 8% 8% 25%



- Molecule 2: Nuclear receptor coactivator 2

Chain E:  50% 33% 17%



- Molecule 2: Nuclear receptor coactivator 2

Chain F:  50% 33% 17%



4 Data and refinement statistics

Property	Value	Source
Space group	C 1 2 1	Depositor
Cell constants a, b, c, α , β , γ	184.93 Å 65.96 Å 71.53 Å 90.00° 103.64° 90.00°	Depositor
Resolution (Å)	19.82 – 3.00 19.59 – 3.00	Depositor EDS
% Data completeness (in resolution range)	100.0 (19.82-3.00) 99.2 (19.59-3.00)	Depositor EDS
R_{merge}	0.08	Depositor
R_{sym}	(Not available)	Depositor
$\langle I/\sigma(I) \rangle$ ¹	2.36 (at 2.98 Å)	Xtriage
Refinement program	REFMAC	Depositor
R, R_{free}	0.224 , 0.289 0.233 , 0.238	Depositor DCC
R_{free} test set	1256 reflections (8.08%)	DCC
Wilson B-factor (Å ²)	66.6	Xtriage
Anisotropy	0.036	Xtriage
Bulk solvent k_{sol} (e/Å ³), B_{sol} (Å ²)	0.31 , 72.4	EDS
L-test for twinning ²	$\langle L \rangle = 0.49$, $\langle L^2 \rangle = 0.32$	Xtriage
Estimated twinning fraction	No twinning to report.	Xtriage
F_o, F_c correlation	0.90	EDS
Total number of atoms	6158	wwPDB-VP
Average B, all atoms (Å ²)	61.0	wwPDB-VP

Xtriage's analysis on translational NCS is as follows: *The largest off-origin peak in the Patterson function is 5.52% of the height of the origin peak. No significant pseudotranslation is detected.*

¹Intensities estimated from amplitudes.

²Theoretical values of $\langle |L| \rangle$, $\langle L^2 \rangle$ for acentric reflections are 0.5, 0.333 respectively for untwinned datasets, and 0.375, 0.2 for perfectly twinned datasets.

5 Model quality

5.1 Standard geometry

Bond lengths and bond angles in the following residue types are not validated in this section: JZN

The Z score for a bond length (or angle) is the number of standard deviations the observed value is removed from the expected value. A bond length (or angle) with $|Z| > 5$ is considered an outlier worth inspection. RMSZ is the root-mean-square of all Z scores of the bond lengths (or angles).

Mol	Chain	Bond lengths		Bond angles	
		RMSZ	$\# Z > 5$	RMSZ	$\# Z > 5$
1	A	0.46	0/1967	0.58	1/2667 (0.0%)
1	B	0.45	0/2010	0.55	0/2726
1	C	0.39	0/1896	0.52	1/2580 (0.0%)
2	D	0.43	0/72	0.50	0/95
2	E	0.51	0/74	0.80	0/98
2	F	0.37	0/72	0.45	0/98
All	All	0.43	0/6091	0.55	2/8264 (0.0%)

There are no bond length outliers.

All (2) bond angle outliers are listed below:

Mol	Chain	Res	Type	Atoms	Z	Observed($^{\circ}$)	Ideal($^{\circ}$)
1	C	526	PRO	N-CA-CB	5.77	110.23	103.30
1	A	553	PRO	N-CA-CB	5.72	110.17	103.30

There are no chirality outliers.

There are no planarity outliers.

5.2 Too-close contacts

In the following table, the Non-H and H(model) columns list the number of non-hydrogen atoms and hydrogen atoms in the chain respectively. The H(added) column lists the number of hydrogen atoms added and optimized by MolProbity. The Clashes column lists the number of clashes within the asymmetric unit, whereas Symm-Clashes lists symmetry related clashes.

Mol	Chain	Non-H	H(model)	H(added)	Clashes	Symm-Clashes
1	A	1927	0	1871	62	0
1	B	1966	0	1955	41	0
1	C	1859	0	1779	52	0

Continued on next page...

Continued from previous page...

Mol	Chain	Non-H	H(model)	H(added)	Clashes	Symm-Clashes
2	D	72	0	76	2	0
2	E	74	0	69	10	0
2	F	72	0	69	3	0
3	A	47	0	37	13	0
3	B	47	0	37	9	0
3	C	47	0	37	7	0
4	A	18	0	0	0	0
4	B	18	0	0	1	0
4	C	11	0	0	1	0
All	All	6158	0	5930	171	0

The all-atom clashscore is defined as the number of clashes found per 1000 atoms (including hydrogen atoms). The all-atom clashscore for this structure is 14.

All (171) close contacts within the same asymmetric unit are listed below, sorted by their clash magnitude.

Atom-1	Atom-2	Interatomic distance (Å)	Clash overlap (Å)
1:B:570:GLN:HB3	1:B:604:MET:HE1	1.54	0.90
1:C:737:PHE:CE1	1:C:757:ILE:HG23	2.08	0.89
1:B:570:GLN:HB3	1:B:604:MET:CE	2.01	0.89
1:A:570:GLN:HB2	1:A:604:MET:CE	2.14	0.77
1:C:744:THR:HG22	1:C:745:MET:H	1.53	0.74
2:E:748:LEU:HD23	2:E:751:LYS:HE2	1.69	0.74
1:B:570:GLN:HG2	3:B:2:JZN:C27	2.18	0.74
1:C:629:ILE:HG22	1:C:634:MET:HG3	1.70	0.73
1:A:541:PRO:HG2	3:A:1:JZN:HN5A	1.54	0.73
1:B:577:TRP:CZ3	1:B:671:LEU:HD22	2.27	0.70
3:B:2:JZN:H30A	3:B:2:JZN:HN5A	1.58	0.69
1:A:648:TYR:OH	2:E:747:TYR:HB2	1.93	0.68
1:C:564:ASN:OD1	3:C:3:JZN:H11A	1.94	0.68
3:B:2:JZN:C30	3:B:2:JZN:HN5A	2.08	0.67
1:B:616:SER:HB3	1:B:620:LEU:HD12	1.77	0.67
1:C:602:TYR:CD1	1:C:729:VAL:HG21	2.29	0.66
1:A:612:SER:O	1:A:616:SER:O	2.14	0.66
1:B:604:MET:HA	3:B:2:JZN:O3	1.95	0.66
1:C:737:PHE:CZ	1:C:757:ILE:HG23	2.30	0.66
1:A:726:HIS:CD2	1:A:773:LEU:HD22	2.31	0.64
1:A:616:SER:O	1:A:618:ALA:N	2.30	0.64
1:C:601:MET:HG2	1:C:733:LEU:HD13	1.80	0.64
3:A:1:JZN:H1B	3:A:1:JZN:H13A	1.80	0.63
1:B:709:SER:O	1:B:712:TRP:HB2	1.98	0.63

Continued on next page...

Continued from previous page...

Atom-1	Atom-2	Interatomic distance (Å)	Clash overlap (Å)
1:A:643:CYS:HA	1:A:646:MET:HE2	1.78	0.63
3:C:3:JZN:H10A	3:C:3:JZN:O1	1.99	0.62
1:A:706:GLY:HA2	1:A:711:ASN:HD21	1.64	0.62
1:A:570:GLN:HB2	1:A:604:MET:HE2	1.79	0.62
1:A:589:LEU:HD21	2:D:750:ASP:OD2	2.00	0.61
1:C:729:VAL:HG12	1:C:733:LEU:HD22	1.82	0.61
1:B:535:LEU:O	1:B:538:VAL:HG22	2.00	0.61
1:C:606:PHE:CE1	1:C:653:LEU:HD21	2.36	0.61
1:B:535:LEU:HD23	1:B:535:LEU:C	2.22	0.60
1:A:578:ALA:HA	1:A:581:ILE:HD12	1.84	0.60
1:B:564:ASN:OD1	3:B:2:JZN:H11	2.02	0.60
1:C:729:VAL:CG1	1:C:733:LEU:HD22	2.31	0.60
1:B:746:SER:HA	4:B:77:HOH:O	2.01	0.59
1:A:618:ALA:CB	1:A:651:SER:HA	2.32	0.59
1:A:670:LEU:HD21	1:A:722:LEU:HD22	1.85	0.59
1:A:772:LEU:C	1:A:773:LEU:HD23	2.23	0.59
1:C:560:MET:HG3	3:C:3:JZN:H10A	1.84	0.59
1:B:602:TYR:CD2	1:B:729:VAL:HG21	2.39	0.57
1:C:570:GLN:HG2	3:C:3:JZN:H32	1.86	0.57
1:A:571:VAL:O	1:A:575:VAL:HG23	2.05	0.56
1:B:678:ASP:N	1:B:678:ASP:OD1	2.37	0.56
1:A:618:ALA:HB1	1:A:651:SER:HA	1.87	0.56
1:C:596:LEU:HD13	2:F:745:LEU:HD11	1.87	0.56
1:C:525:LEU:O	1:C:529:THR:OG1	2.17	0.55
3:A:1:JZN:O1	3:A:1:JZN:C9	2.54	0.55
1:A:621:LEU:HD21	1:A:646:MET:HE3	1.88	0.55
1:B:602:TYR:CE1	1:B:729:VAL:HG11	2.42	0.55
1:C:761:ILE:HB	1:C:762:PRO:HD3	1.88	0.55
1:A:579:LYS:O	1:A:585:ARG:HD3	2.07	0.54
1:B:666:MET:HB3	1:B:722:LEU:HD21	1.90	0.54
1:C:760:GLN:O	1:C:764:TYR:HB2	2.07	0.54
1:A:621:LEU:HD21	1:A:646:MET:CE	2.38	0.54
1:A:720:LYS:NZ	2:E:751:LYS:HG3	2.23	0.54
1:C:602:TYR:CG	1:C:729:VAL:HG21	2.43	0.54
3:C:3:JZN:HN5A	3:C:3:JZN:H29A	1.73	0.53
1:C:595:LEU:HD21	1:C:672:LEU:CD2	2.39	0.53
1:A:594:THR:HG21	1:A:676:PRO:HG3	1.90	0.53
1:A:567:GLY:HA2	1:A:604:MET:HE1	1.90	0.53
1:A:731:ASN:H	1:A:731:ASN:HD22	1.57	0.52
1:B:546:ALA:HB1	1:B:562:THR:CG2	2.40	0.52
1:A:541:PRO:CG	3:A:1:JZN:HN5A	2.22	0.51

Continued on next page...

Continued from previous page...

Atom-1	Atom-2	Interatomic distance (Å)	Clash overlap (Å)
1:B:606:PHE:CE1	1:B:653:LEU:HD21	2.45	0.51
1:C:529:THR:HG21	1:C:535:LEU:HA	1.93	0.51
1:B:570:GLN:HB3	1:B:604:MET:HE2	1.91	0.50
1:A:567:GLY:O	1:A:571:VAL:HG23	2.11	0.50
1:A:629:ILE:CG2	1:A:630:ASN:O	2.59	0.50
1:B:602:TYR:CG	1:B:729:VAL:HG21	2.47	0.50
3:A:1:JZN:H9B	3:A:1:JZN:O1	2.12	0.50
1:A:666:MET:SD	1:A:718:LEU:HD22	2.52	0.50
1:A:602:TYR:CG	1:A:729:VAL:HG21	2.46	0.50
1:A:629:ILE:HG22	1:A:630:ASN:O	2.11	0.50
3:C:3:JZN:HN5A	3:C:3:JZN:C29	2.24	0.49
1:C:571:VAL:O	1:C:575:VAL:HG23	2.12	0.49
1:B:549:ASP:C	1:B:549:ASP:OD1	2.50	0.49
1:A:585:ARG:NH2	1:A:585:ARG:HA	2.27	0.49
1:B:563:LEU:HD13	3:B:2:JZN:H1A	1.95	0.49
1:C:698:GLY:HA2	1:C:701:ILE:HD12	1.94	0.49
1:A:727:GLU:O	1:A:731:ASN:ND2	2.46	0.49
1:A:598:TYR:CE2	1:A:769:ILE:HG12	2.48	0.49
1:A:541:PRO:HG2	3:A:1:JZN:H31A	1.93	0.48
1:A:612:SER:HB3	1:A:620:LEU:O	2.13	0.48
1:A:648:TYR:CE2	2:E:747:TYR:HB3	2.48	0.48
1:A:741:LEU:HD21	1:A:761:ILE:HD13	1.96	0.48
1:A:604:MET:HB3	3:A:1:JZN:C18	2.43	0.48
1:A:722:LEU:O	1:A:725:MET:HB2	2.13	0.48
1:A:643:CYS:HA	1:A:646:MET:CE	2.43	0.48
1:B:570:GLN:HG2	3:B:2:JZN:C26	2.44	0.48
1:A:570:GLN:HB2	1:A:604:MET:HE1	1.94	0.47
1:C:556:THR:CB	1:C:637:PRO:HG3	2.44	0.47
1:A:618:ALA:HB2	1:A:654:HIS:HB2	1.95	0.47
1:C:652:GLU:CB	1:C:721:LEU:HD21	2.44	0.47
1:B:608:LEU:HD22	1:B:623:PHE:CE2	2.48	0.47
1:B:769:ILE:HG23	1:B:769:ILE:O	2.15	0.47
1:A:525:LEU:HB3	1:A:526:PRO:HD3	1.97	0.47
1:C:552:VAL:HG23	1:C:558:ARG:HH12	1.80	0.47
1:C:740:PHE:CG	1:C:757:ILE:HG21	2.49	0.47
1:C:590:ASP:N	1:C:590:ASP:OD1	2.48	0.47
2:E:744:LEU:HA	2:E:747:TYR:CD2	2.50	0.46
1:A:648:TYR:HE2	2:E:747:TYR:HB3	1.80	0.46
3:A:1:JZN:C1	3:A:1:JZN:H9B	2.45	0.46
1:A:567:GLY:O	1:A:604:MET:HE3	2.16	0.46
1:B:663:TYR:CE2	1:B:664:LEU:HD23	2.50	0.46

Continued on next page...

Continued from previous page...

Atom-1	Atom-2	Interatomic distance (Å)	Clash overlap (Å)
1:C:563:LEU:HD21	1:C:627:LEU:CD2	2.46	0.46
1:C:680:LEU:O	1:C:683:GLN:N	2.49	0.46
1:A:567:GLY:HA2	1:A:604:MET:CE	2.46	0.45
1:A:618:ALA:HB2	1:A:654:HIS:CB	2.47	0.45
1:B:610:TRP:CE2	1:B:614:ARG:HG3	2.52	0.45
2:E:748:LEU:HD23	2:E:751:LYS:CE	2.42	0.45
1:C:570:GLN:HG2	3:C:3:JZN:C28	2.47	0.45
1:B:571:VAL:CG1	1:B:752:MET:HE2	2.47	0.45
1:C:621:LEU:HD13	1:C:647:LEU:HD13	1.99	0.45
1:C:669:LEU:O	1:C:673:SER:N	2.49	0.45
2:F:743:ALA:O	2:F:747:TYR:N	2.50	0.44
1:A:701:ILE:HD11	1:A:718:LEU:HD12	1.99	0.44
1:C:594:THR:HA	1:C:597:GLN:HB2	1.99	0.44
1:B:642:GLN:OE1	1:B:732:LEU:HD23	2.17	0.44
3:A:1:JZN:F4	3:A:1:JZN:C9	2.55	0.44
1:B:546:ALA:CA	1:B:566:LEU:HD13	2.48	0.44
1:C:655:ARG:CZ	1:C:656:LEU:HD21	2.47	0.44
1:B:548:TYR:HB2	1:B:562:THR:HG21	2.00	0.44
1:A:570:GLN:HB3	3:A:1:JZN:O3	2.18	0.44
1:C:587:LEU:HG	1:C:685:LEU:HD23	1.99	0.44
1:C:592:GLN:OE1	2:F:749:LEU:HD22	2.18	0.44
1:A:658:VAL:HG12	1:A:659:SER:O	2.18	0.43
3:B:2:JZN:H10B	3:B:2:JZN:O1	2.18	0.43
1:C:735:TYR:C	1:C:735:TYR:CD2	2.92	0.43
1:C:564:ASN:ND2	1:C:747:ILE:CG2	2.81	0.43
1:B:641:ASP:OD2	1:C:544:LEU:HD22	2.18	0.43
1:A:666:MET:HG3	1:A:697:LEU:HD13	1.99	0.43
1:B:546:ALA:HB1	1:B:562:THR:HG22	1.99	0.43
1:C:606:PHE:HE1	1:C:653:LEU:HD21	1.82	0.43
1:B:552:VAL:HB	1:B:553:PRO:CD	2.49	0.43
1:C:771:LYS:NZ	4:C:41:HOH:O	2.51	0.43
1:A:577:TRP:CZ2	1:A:581:ILE:HD11	2.54	0.42
1:C:670:LEU:HD21	1:C:725:MET:HG3	2.01	0.42
1:A:564:ASN:OD1	3:A:1:JZN:H11A	2.19	0.42
1:A:621:LEU:CD2	1:A:646:MET:HE3	2.48	0.42
1:A:566:LEU:O	1:A:570:GLN:HG3	2.20	0.42
3:B:2:JZN:H3	3:B:2:JZN:H1B	1.59	0.42
1:A:571:VAL:HG21	1:A:753:LEU:CD2	2.50	0.42
1:B:725:MET:O	1:B:729:VAL:HG23	2.19	0.42
1:C:689:ILE:O	1:C:692:THR:HB	2.19	0.42
1:C:740:PHE:CD1	1:C:757:ILE:HG21	2.55	0.42

Continued on next page...

Continued from previous page...

Atom-1	Atom-2	Interatomic distance (Å)	Clash overlap (Å)
1:A:648:TYR:OH	2:E:747:TYR:CB	2.67	0.42
1:B:656:LEU:HD13	1:B:718:LEU:HD23	2.02	0.42
1:C:583:GLY:HA3	1:C:689:ILE:HD11	2.01	0.42
1:A:752:MET:HA	2:D:744:LEU:HD23	2.01	0.42
1:C:569:ARG:HA	1:C:572:ILE:HD12	2.01	0.42
1:C:639:MET:O	1:C:640:TYR:CB	2.67	0.42
1:C:669:LEU:O	1:C:672:LEU:N	2.53	0.42
3:A:1:JZN:H31A	3:A:1:JZN:HN5A	1.49	0.41
1:A:639:MET:O	1:A:643:CYS:N	2.25	0.41
1:C:680:LEU:HD23	1:C:680:LEU:HA	1.91	0.41
1:C:747:ILE:HG22	1:C:749:PHE:CD1	2.55	0.41
2:E:744:LEU:HA	2:E:747:TYR:CE2	2.55	0.41
1:B:731:ASN:HD21	1:C:543:VAL:CG2	2.34	0.41
1:A:720:LYS:HZ2	2:E:751:LYS:HG3	1.84	0.41
1:A:541:PRO:HD2	3:A:1:JZN:HN5	1.86	0.41
1:A:646:MET:HB2	1:A:646:MET:HE2	1.84	0.41
1:C:552:VAL:HG23	1:C:558:ARG:NH1	2.36	0.41
1:A:683:GLN:O	1:A:684:GLU:C	2.60	0.41
1:B:546:ALA:HB2	1:B:566:LEU:HD13	2.02	0.41
1:B:613:TYR:O	1:B:617:SER:HA	2.22	0.40
1:B:629:ILE:HG23	1:B:633:ARG:HB3	2.03	0.40
1:B:631:GLU:O	1:B:635:THR:HG23	2.21	0.40
1:B:710:GLN:OE1	1:B:713:GLN:CB	2.69	0.40
1:C:571:VAL:HG23	1:C:604:MET:CE	2.52	0.40

There are no symmetry-related clashes.

5.3 Torsion angles [i](#)

5.3.1 Protein backbone [i](#)

In the following table, the Percentiles column shows the percent Ramachandran outliers of the chain as a percentile score with respect to all X-ray entries followed by that with respect to entries of similar resolution.

The Analysed column shows the number of residues for which the backbone conformation was analysed, and the total number of residues.

Mol	Chain	Analysed	Favoured	Allowed	Outliers	Percentiles
1	A	237/259 (92%)	215 (91%)	19 (8%)	3 (1%)	14 51

Continued on next page...

Continued from previous page...

Mol	Chain	Analysed	Favoured	Allowed	Outliers	Percentiles	
1	B	243/259 (94%)	227 (93%)	15 (6%)	1 (0%)	38	78
1	C	238/259 (92%)	208 (87%)	20 (8%)	10 (4%)	3	18
2	D	7/12 (58%)	7 (100%)	0	0	100	100
2	E	8/12 (67%)	7 (88%)	1 (12%)	0	100	100
2	F	8/12 (67%)	8 (100%)	0	0	100	100
All	All	741/813 (91%)	672 (91%)	55 (7%)	14 (2%)	9	41

All (14) Ramachandran outliers are listed below:

Mol	Chain	Res	Type
1	A	552	VAL
1	A	617	SER
1	C	617	SER
1	C	748	GLU
1	C	637	PRO
1	C	640	TYR
1	C	530	PRO
1	C	619	ASN
1	C	708	SER
1	C	555	SER
1	C	705	GLU
1	A	708	SER
1	B	681	LYS
1	C	636	LEU

5.3.2 Protein sidechains ⓘ

In the following table, the Percentiles column shows the percent sidechain outliers of the chain as a percentile score with respect to all X-ray entries followed by that with respect to entries of similar resolution.

The Analysed column shows the number of residues for which the sidechain conformation was analysed, and the total number of residues.

Mol	Chain	Analysed	Rotameric	Outliers	Percentiles	
1	A	203/236 (86%)	193 (95%)	10 (5%)	29	68
1	B	212/236 (90%)	203 (96%)	9 (4%)	34	73
1	C	182/236 (77%)	176 (97%)	6 (3%)	43	79
2	D	7/11 (64%)	6 (86%)	1 (14%)	4	18

Continued on next page...

Continued from previous page...

Mol	Chain	Analysed	Rotameric	Outliers	Percentiles	
2	E	6/11 (54%)	6 (100%)	0	100	100
2	F	6/11 (54%)	6 (100%)	0	100	100
All	All	616/741 (83%)	590 (96%)	26 (4%)	34	73

All (26) residues with a non-rotameric sidechain are listed below:

Mol	Chain	Res	Type
1	A	554	ASP
1	A	560	MET
1	A	570	GLN
1	A	613	TYR
1	A	677	LYS
1	A	707	ASN
1	A	727	GLU
1	A	741	LEU
1	A	773	LEU
1	A	776	GLN
2	D	750	ASP
1	B	543	VAL
1	B	549	ASP
1	B	555	SER
1	B	570	GLN
1	B	604	MET
1	B	678	ASP
1	B	712	TRP
1	B	720	LYS
1	B	768	ASN
1	C	554	ASP
1	C	557	TRP
1	C	570	GLN
1	C	587	LEU
1	C	733	LEU
1	C	737	PHE

Some sidechains can be flipped to improve hydrogen bonding and reduce clashes. All (10) such sidechains are listed below:

Mol	Chain	Res	Type
1	A	570	GLN
1	A	588	HIS
1	A	619	ASN

Continued on next page...

Continued from previous page...

Mol	Chain	Res	Type
1	A	707	ASN
1	A	717	GLN
1	A	731	ASN
1	A	760	GLN
1	A	776	GLN
1	B	570	GLN
1	C	570	GLN

5.3.3 RNA ⓘ

There are no RNA molecules in this entry.

5.4 Non-standard residues in protein, DNA, RNA chains ⓘ

There are no non-standard protein/DNA/RNA residues in this entry.

5.5 Carbohydrates ⓘ

There are no carbohydrates in this entry.

5.6 Ligand geometry ⓘ

3 ligands are modelled in this entry.

In the following table, the Counts columns list the number of bonds (or angles) for which Mogul statistics could be retrieved, the number of bonds (or angles) that are observed in the model and the number of bonds (or angles) that are defined in the Chemical Component Dictionary. The Link column lists molecule types, if any, to which the group is linked. The Z score for a bond length (or angle) is the number of standard deviations the observed value is removed from the expected value. A bond length (or angle) with $|Z| > 2$ is considered an outlier worth inspection. RMSZ is the root-mean-square of all Z scores of the bond lengths (or angles).

Mol	Type	Chain	Res	Link	Bond lengths			Bond angles		
					Counts	RMSZ	# Z > 2	Counts	RMSZ	# Z > 2
3	JZN	A	1	-	48,51,51	1.25	6 (12%)	68,78,78	2.37	21 (30%)
3	JZN	B	2	-	48,51,51	1.36	9 (18%)	68,78,78	2.75	26 (38%)
3	JZN	C	3	-	48,51,51	1.20	6 (12%)	68,78,78	1.77	16 (23%)

In the following table, the Chirals column lists the number of chiral outliers, the number of chiral centers analysed, the number of these observed in the model and the number defined in the

Chemical Component Dictionary. Similar counts are reported in the Torsion and Rings columns.
'-' means no outliers of that kind were identified.

Mol	Type	Chain	Res	Link	Chirals	Torsions	Rings
3	JZN	A	1	-	-	1/44/55/55	0/5/5/5
3	JZN	B	2	-	-	0/44/55/55	0/5/5/5
3	JZN	C	3	-	-	1/44/55/55	0/5/5/5

All (21) bond length outliers are listed below:

Mol	Chain	Res	Type	Atoms	Z	Observed(Å)	Ideal(Å)
3	C	3	JZN	C8-C7	-3.37	1.49	1.54
3	A	1	JZN	N3-N2	-2.92	1.34	1.39
3	A	1	JZN	C8-C7	-2.84	1.50	1.54
3	A	1	JZN	C22-N2	-2.75	1.38	1.44
3	B	2	JZN	F2-C34	-2.50	1.24	1.33
3	C	3	JZN	N3-N2	-2.50	1.35	1.39
3	B	2	JZN	N3-N2	-2.48	1.35	1.39
3	A	1	JZN	C14-C21	-2.45	1.38	1.43
3	A	1	JZN	C32-C33	-2.42	1.47	1.52
3	B	2	JZN	C34-C12	-2.29	1.50	1.53
3	B	2	JZN	C14-C21	-2.24	1.38	1.43
3	C	3	JZN	C26-C28	-2.12	1.46	1.50
3	C	3	JZN	C14-C21	-2.08	1.39	1.43
3	B	2	JZN	C8-C7	-2.06	1.51	1.54
3	A	1	JZN	C29-N4	-2.03	1.43	1.47
3	B	2	JZN	C26-C28	-2.03	1.46	1.50
3	B	2	JZN	C33-N5	2.26	1.37	1.32
3	C	3	JZN	C14-N1	2.37	1.41	1.36
3	C	3	JZN	C33-N5	2.41	1.37	1.32
3	B	2	JZN	C14-N1	2.72	1.42	1.36
3	B	2	JZN	F3-C34	4.15	1.48	1.33

All (63) bond angle outliers are listed below:

Mol	Chain	Res	Type	Atoms	Z	Observed(°)	Ideal(°)
3	B	2	JZN	F3-C34-C12	-12.30	103.33	112.22
3	A	1	JZN	C1-O1-C2	-8.94	104.67	117.54
3	A	1	JZN	C33-C32-N4	-7.56	100.11	112.29
3	B	2	JZN	C1-O1-C2	-7.16	107.23	117.54
3	B	2	JZN	C31-C32-C33	-6.94	102.73	111.46
3	C	3	JZN	C1-O1-C2	-6.05	108.84	117.54
3	A	1	JZN	O1-C2-C3	-5.05	115.90	124.37
3	B	2	JZN	O1-C2-C3	-4.33	117.09	124.37

Continued on next page...

Continued from previous page...

Mol	Chain	Res	Type	Atoms	Z	Observed(°)	Ideal(°)
3	A	1	JZN	C29-N4-C32	-4.24	105.77	111.99
3	A	1	JZN	O2-C12-C34	-3.90	99.70	107.95
3	C	3	JZN	O2-C12-C11	-3.86	98.56	108.00
3	C	3	JZN	C12-C13-N1	-3.69	105.82	111.99
3	B	2	JZN	C29-N4-C28	-3.50	112.29	125.27
3	B	2	JZN	C15-C14-C21	-3.43	114.87	119.06
3	B	2	JZN	O3-C28-C26	-3.33	113.97	120.21
3	A	1	JZN	C12-C13-N1	-3.23	106.60	111.99
3	A	1	JZN	C32-C33-N5	-3.12	109.29	116.39
3	A	1	JZN	C29-N4-C28	-3.08	113.86	125.27
3	C	3	JZN	O1-C2-C3	-3.01	119.32	124.37
3	B	2	JZN	C33-C32-N4	-2.90	107.62	112.29
3	C	3	JZN	C15-C14-C21	-2.82	115.62	119.06
3	B	2	JZN	C9-C8-C7	-2.82	106.23	111.05
3	C	3	JZN	C33-C32-N4	-2.81	107.77	112.29
3	A	1	JZN	O2-C12-C11	-2.80	101.15	108.00
3	C	3	JZN	O2-C12-C34	-2.70	102.25	107.95
3	B	2	JZN	C27-C26-C28	-2.68	114.39	120.20
3	A	1	JZN	C15-C14-C21	-2.68	115.80	119.06
3	A	1	JZN	C10-C8-C7	-2.66	106.50	111.05
3	C	3	JZN	C29-N4-C28	-2.54	115.86	125.27
3	C	3	JZN	C6-C7-C8	-2.51	117.30	120.75
3	B	2	JZN	C6-C7-C8	-2.44	117.40	120.75
3	B	2	JZN	C4-C5-C6	-2.38	120.17	123.29
3	B	2	JZN	C12-C13-N1	-2.29	108.16	111.99
3	C	3	JZN	C29-N4-C32	-2.27	108.67	111.99
3	A	1	JZN	C17-C16-C15	-2.26	117.61	120.94
3	C	3	JZN	C18-C19-N2	-2.23	129.73	132.06
3	B	2	JZN	C29-N4-C32	-2.21	108.75	111.99
3	A	1	JZN	C27-C26-C28	-2.17	115.51	120.20
3	C	3	JZN	C27-C26-C28	-2.13	115.59	120.20
3	A	1	JZN	F2-C34-C12	-2.12	110.69	112.22
3	B	2	JZN	C24-C25-C26	-2.03	117.96	120.35
3	B	2	JZN	C23-C22-C27	-2.03	119.54	121.55
3	A	1	JZN	O4-C33-C32	2.11	124.17	120.28
3	A	1	JZN	O4-C33-N5	2.27	126.55	123.06
3	A	1	JZN	C15-C14-N1	2.34	125.68	121.74
3	B	2	JZN	C7-C6-C5	2.39	121.20	117.71
3	C	3	JZN	C30-C29-N4	2.45	107.03	103.22
3	B	2	JZN	F4-C34-F2	2.56	115.62	107.55
3	A	1	JZN	C18-C16-C15	2.59	122.29	118.81
3	A	1	JZN	C30-C29-N4	2.62	107.30	103.22

Continued on next page...

Continued from previous page...

Mol	Chain	Res	Type	Atoms	Z	Observed(°)	Ideal(°)
3	C	3	JZN	C18-C16-C15	2.64	122.36	118.81
3	C	3	JZN	C31-C32-N4	2.75	106.89	103.02
3	C	3	JZN	O1-C2-C7	2.75	119.53	116.47
3	B	2	JZN	C10-C8-C7	2.80	115.84	111.05
3	B	2	JZN	C18-C16-C15	3.00	122.84	118.81
3	B	2	JZN	C15-C14-N1	3.04	126.86	121.74
3	B	2	JZN	C31-C32-N4	3.17	107.47	103.02
3	B	2	JZN	F4-C34-C12	3.56	114.80	112.22
3	B	2	JZN	C30-C29-N4	3.60	108.82	103.22
3	A	1	JZN	C31-C32-N4	4.11	108.80	103.02
3	B	2	JZN	C26-C28-N4	4.26	125.29	118.66
3	B	2	JZN	O1-C2-C7	4.36	121.32	116.47
3	A	1	JZN	O1-C2-C7	5.28	122.35	116.47

There are no chirality outliers.

All (2) torsion outliers are listed below:

Mol	Chain	Res	Type	Atoms
3	C	3	JZN	O2-C12-C11-C8
3	A	1	JZN	O2-C12-C11-C8

There are no ring outliers.

3 monomers are involved in 29 short contacts:

Mol	Chain	Res	Type	Clashes	Symm-Clashes
3	A	1	JZN	13	0
3	B	2	JZN	9	0
3	C	3	JZN	7	0

5.7 Other polymers [i](#)

There are no such residues in this entry.

5.8 Polymer linkage issues [i](#)

There are no chain breaks in this entry.

6 Fit of model and data ⓘ

6.1 Protein, DNA and RNA chains ⓘ

In the following table, the column labelled ‘#RSRZ> 2’ contains the number (and percentage) of RSRZ outliers, followed by percent RSRZ outliers for the chain as percentile scores relative to all X-ray entries and entries of similar resolution. The OWAB column contains the minimum, median, 95th percentile and maximum values of the occupancy-weighted average B-factor per residue. The column labelled ‘Q< 0.9’ lists the number of (and percentage) of residues with an average occupancy less than 0.9.

Mol	Chain	Analysed	<RSRZ>	#RSRZ>2	OWAB(Å ²)	Q<0.9
1	A	245/259 (94%)	-0.23	5 (2%) 65 36	36, 51, 69, 74	0
1	B	247/259 (95%)	-0.28	4 (1%) 72 44	40, 53, 74, 82	1 (0%)
1	C	246/259 (94%)	0.08	7 (2%) 53 25	57, 76, 94, 103	0
2	D	9/12 (75%)	-0.16	0 100 100	74, 75, 77, 77	0
2	E	10/12 (83%)	-0.80	0 100 100	60, 61, 62, 64	0
2	F	10/12 (83%)	-0.29	0 100 100	72, 73, 75, 75	0
All	All	767/813 (94%)	-0.15	16 (2%) 64 34	36, 61, 88, 103	1 (0%)

All (16) RSRZ outliers are listed below:

Mol	Chain	Res	Type	RSRZ
1	A	551	SER	5.9
1	B	744	THR	3.8
1	C	762	PRO	3.6
1	A	706	GLY	3.5
1	C	745	MET	2.9
1	A	553	PRO	2.9
1	B	709	SER	2.8
1	C	744	THR	2.8
1	C	706	GLY	2.7
1	A	549	ASP	2.7
1	A	526	PRO	2.6
1	C	679	GLY	2.5
1	C	761	ILE	2.4
1	B	710	GLN	2.1
1	B	711	ASN	2.1
1	C	636	LEU	2.0

6.2 Non-standard residues in protein, DNA, RNA chains [i](#)

There are no non-standard protein/DNA/RNA residues in this entry.

6.3 Carbohydrates [i](#)

There are no carbohydrates in this entry.

6.4 Ligands [i](#)

In the following table, the Atoms column lists the number of modelled atoms in the group and the number defined in the chemical component dictionary. LLDF column lists the quality of electron density of the group with respect to its neighbouring residues in protein, DNA or RNA chains. The B-factors column lists the minimum, median, 95th percentile and maximum values of B factors of atoms in the group. The column labelled 'Q< 0.9' lists the number of atoms with occupancy less than 0.9.

Mol	Type	Chain	Res	Atoms	RSCC	RSR	LLDF	B-factors(\AA^2)	Q<0.9
3	JZN	A	1	47/47	0.91	0.24	1.19	56,59,60,63	0
3	JZN	C	3	47/47	0.86	0.28	1.10	74,77,79,79	0
3	JZN	B	2	47/47	0.92	0.24	0.72	49,55,61,63	0

6.5 Other polymers [i](#)

There are no such residues in this entry.