



Full wwPDB X-ray Structure Validation Report ⓘ

Feb 14, 2017 – 07:32 am GMT

PDB ID : 3K4Q
Title : Aspergillus niger Phytase in complex with myo-inositol hexakis sulfate
Authors : Oakley, A.J.
Deposited on : 2009-10-06
Resolution : 2.20 Å(reported)

This is a Full wwPDB X-ray Structure Validation Report for a publicly released PDB entry.

We welcome your comments at validation@mail.wwpdb.org

A user guide is available at

<http://wwpdb.org/validation/2016/XrayValidationReportHelp>

with specific help available everywhere you see the ⓘ symbol.

The following versions of software and data (see [references ⓘ](#)) were used in the production of this report:

MolProbity : 4.02b-467
Mogul : 1.7.2 (RC1), CSD as538be (2017)
Xtriage (Phenix) : 1.9-1692
EDS : trunk28620
Percentile statistics : 20161228.v01 (using entries in the PDB archive December 28th 2016)
Refmac : 5.8.0135
CCP4 : 6.5.0
Ideal geometry (proteins) : Engh & Huber (2001)
Ideal geometry (DNA, RNA) : Parkinson et al. (1996)
Validation Pipeline (wwPDB-VP) : recalc28949

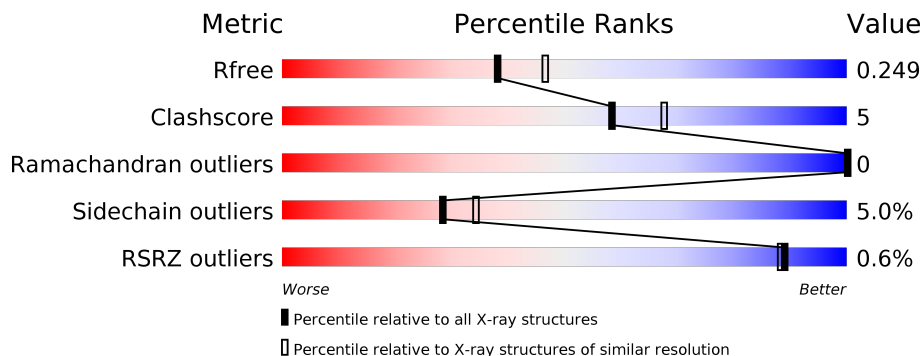
1 Overall quality at a glance

The following experimental techniques were used to determine the structure:

X-RAY DIFFRACTION

The reported resolution of this entry is 2.20 Å.

Percentile scores (ranging between 0-100) for global validation metrics of the entry are shown in the following graphic. The table shows the number of entries on which the scores are based.



Metric	Whole archive (#Entries)	Similar resolution (#Entries, resolution range(Å))
R_{free}	100719	4002 (2.20-2.20)
Clashscore	112137	4730 (2.20-2.20)
Ramachandran outliers	110173	4656 (2.20-2.20)
Sidechain outliers	110143	4657 (2.20-2.20)
RSRZ outliers	101464	4033 (2.20-2.20)

The table below summarises the geometric issues observed across the polymeric chains and their fit to the electron density. The red, orange, yellow and green segments on the lower bar indicate the fraction of residues that contain outliers for ≥ 3 , 2, 1 and 0 types of geometric quality criteria. A grey segment represents the fraction of residues that are not modelled. The numeric value for each fraction is indicated below the corresponding segment, with a dot representing fractions $\leq 5\%$. The upper red bar (where present) indicates the fraction of residues that have poor fit to the electron density. The numeric value is given above the bar.

Mol	Chain	Length	Quality of chain
1	A	444	 83% 14% ..
1	B	444	 82% 14% ..

2 Entry composition [i](#)

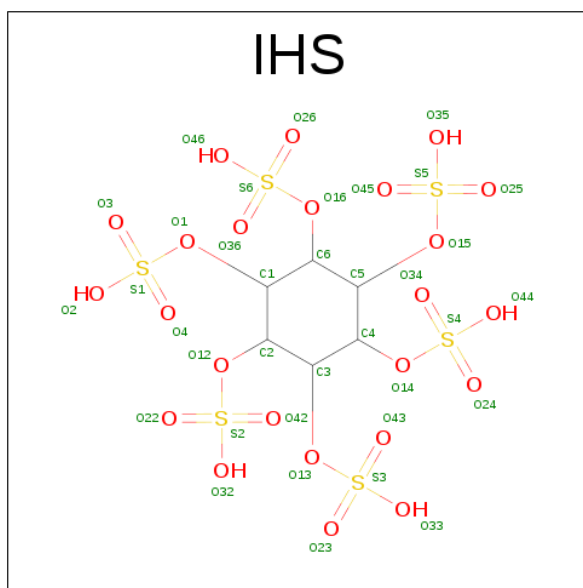
There are 4 unique types of molecules in this entry. The entry contains 7350 atoms, of which 0 are hydrogens and 0 are deuteriums.

In the tables below, the ZeroOcc column contains the number of atoms modelled with zero occupancy, the AltConf column contains the number of residues with at least one atom in alternate conformation and the Trace column contains the number of residues modelled with at most 2 atoms.

- Molecule 1 is a protein called 3-phytase A.

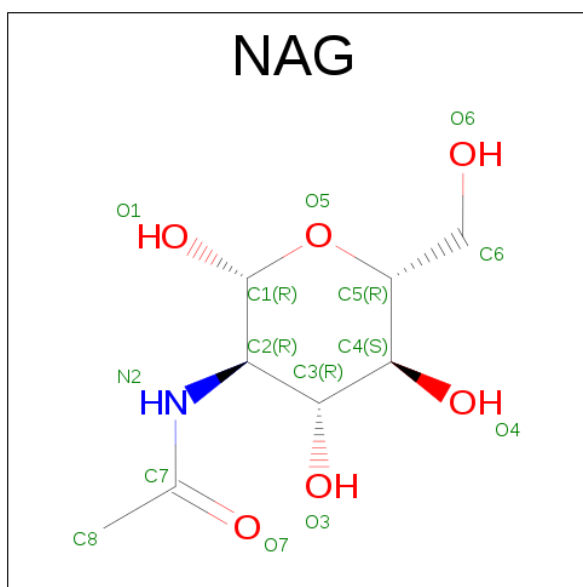
Mol	Chain	Residues	Atoms					ZeroOcc	AltConf	Trace
1	A	438	Total	C	N	O	S	0	2	0
			3397	2138	567	678	14			
1	B	438	Total	C	N	O	S	0	3	0
			3406	2142	567	683	14			

- Molecule 2 is D-MYO-INOSITOL-HEXASULPHATE (three-letter code: IHS) (formula: $C_6H_{12}O_{24}S_6$).



Mol	Chain	Residues	Atoms				ZeroOcc	AltConf
2	A	1	Total	C	O	S	0	0
			36	6	24	6		
2	B	1	Total	C	O	S	0	0
			36	6	24	6		

- Molecule 3 is SUGAR (N-ACETYL-D-GLUCOSAMINE) (three-letter code: NAG) (formula: $C_8H_{15}NO_6$).



Mol	Chain	Residues	Atoms				ZeroOcc	AltConf
3	A	1	Total	C	N	O	0	0
			14	8	1	5		
3	A	1	Total	C	N	O	0	0
			14	8	1	5		
3	A	1	Total	C	N	O	0	0
			14	8	1	5		
3	A	1	Total	C	N	O	0	0
			14	8	1	5		
3	B	1	Total	C	N	O	0	0
			14	8	1	5		
3	B	1	Total	C	N	O	0	0
			14	8	1	5		
3	B	1	Total	C	N	O	0	0
			14	8	1	5		

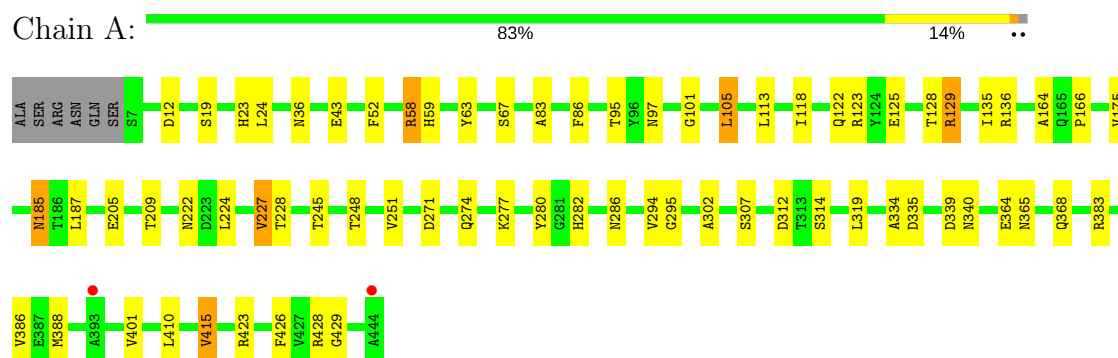
- Molecule 4 is water.

Mol	Chain	Residues	Atoms		ZeroOcc	AltConf
4	A	185	Total	O	0	0
			185	185		
4	B	178	Total	O	0	0
			178	178		

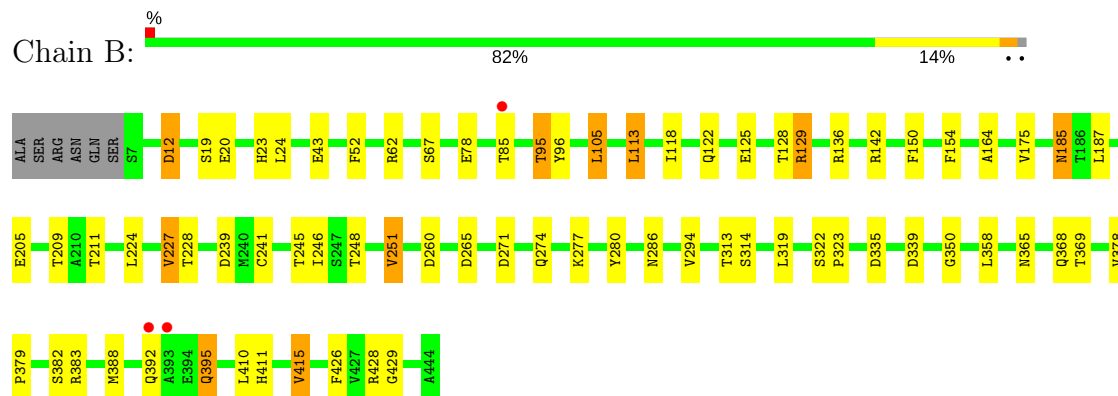
3 Residue-property plots [i](#)

These plots are drawn for all protein, RNA and DNA chains in the entry. The first graphic for a chain summarises the proportions of the various outlier classes displayed in the second graphic. The second graphic shows the sequence view annotated by issues in geometry and electron density. Residues are color-coded according to the number of geometric quality criteria for which they contain at least one outlier: green = 0, yellow = 1, orange = 2 and red = 3 or more. A red dot above a residue indicates a poor fit to the electron density ($RSRZ > 2$). Stretches of 2 or more consecutive residues without any outlier are shown as a green connector. Residues present in the sample, but not in the model, are shown in grey.

• Molecule 1: 3-phytase A



• Molecule 1: 3-phytase A



4 Data and refinement statistics

Property	Value	Source
Space group	P 1 21 1	Depositor
Cell constants a, b, c, α , β , γ	70.70Å 87.57Å 81.77Å 90.00° 110.61° 90.00°	Depositor
Resolution (Å)	62.01 – 2.20 62.01 – 2.20	Depositor EDS
% Data completeness (in resolution range)	98.5 (62.01-2.20) 98.5 (62.01-2.20)	Depositor EDS
R_{merge}	0.11	Depositor
R_{sym}	(Not available)	Depositor
$\langle I/\sigma(I) \rangle$ ¹	2.35 (at 2.20Å)	Xtriage
Refinement program	REFMAC 5.5.0102	Depositor
R, R_{free}	0.197 , 0.254 0.195 , 0.249	Depositor DCC
R_{free} test set	2377 reflections (5.35%)	DCC
Wilson B-factor (Å ²)	27.5	Xtriage
Anisotropy	0.193	Xtriage
Bulk solvent k_{sol} (e/Å ³), B_{sol} (Å ²)	0.31 , 28.2	EDS
L-test for twinning ²	$\langle L \rangle = 0.50$, $\langle L^2 \rangle = 0.33$	Xtriage
Estimated twinning fraction	No twinning to report.	Xtriage
F_o, F_c correlation	0.94	EDS
Total number of atoms	7350	wwPDB-VP
Average B, all atoms (Å ²)	27.0	wwPDB-VP

Xtriage's analysis on translational NCS is as follows: *The largest off-origin peak in the Patterson function is 6.41% of the height of the origin peak. No significant pseudotranslation is detected.*

¹Intensities estimated from amplitudes.

²Theoretical values of $\langle |L| \rangle$, $\langle L^2 \rangle$ for acentric reflections are 0.5, 0.333 respectively for untwinned datasets, and 0.375, 0.2 for perfectly twinned datasets.

5 Model quality [i](#)

5.1 Standard geometry [i](#)

Bond lengths and bond angles in the following residue types are not validated in this section: IHS, NAG

The Z score for a bond length (or angle) is the number of standard deviations the observed value is removed from the expected value. A bond length (or angle) with $|Z| > 5$ is considered an outlier worth inspection. RMSZ is the root-mean-square of all Z scores of the bond lengths (or angles).

Mol	Chain	Bond lengths		Bond angles	
		RMSZ	$\# Z > 5$	RMSZ	$\# Z > 5$
1	A	0.93	0/3484	0.87	6/4742 (0.1%)
1	B	0.93	2/3496 (0.1%)	0.87	7/4759 (0.1%)
All	All	0.93	2/6980 (0.0%)	0.87	13/9501 (0.1%)

All (2) bond length outliers are listed below:

Mol	Chain	Res	Type	Atoms	Z	Observed(Å)	Ideal(Å)
1	B	20	GLU	CG-CD	5.65	1.60	1.51
1	B	154	PHE	CE1-CZ	5.15	1.47	1.37

All (13) bond angle outliers are listed below:

Mol	Chain	Res	Type	Atoms	Z	Observed(°)	Ideal(°)
1	B	129	ARG	NE-CZ-NH2	-8.90	115.85	120.30
1	A	129	ARG	NE-CZ-NH2	-8.29	116.16	120.30
1	A	105	LEU	CA-CB-CG	5.83	128.71	115.30
1	A	415	VAL	CB-CA-C	-5.73	100.51	111.40
1	B	415	VAL	CB-CA-C	-5.72	100.54	111.40
1	B	339	ASP	CB-CG-OD1	5.51	123.26	118.30
1	B	239	ASP	CB-CG-OD1	5.48	123.23	118.30
1	B	129	ARG	NE-CZ-NH1	5.35	122.98	120.30
1	A	58	ARG	NE-CZ-NH1	5.22	122.91	120.30
1	B	251	VAL	CB-CA-C	-5.17	101.58	111.40
1	A	129	ARG	CB-CG-CD	-5.13	98.26	111.60
1	B	105	LEU	CA-CB-CG	5.11	127.06	115.30
1	A	123	ARG	NE-CZ-NH1	5.04	122.82	120.30

There are no chirality outliers.

There are no planarity outliers.

5.2 Too-close contacts ⓘ

In the following table, the Non-H and H(model) columns list the number of non-hydrogen atoms and hydrogen atoms in the chain respectively. The H(added) column lists the number of hydrogen atoms added and optimized by MolProbity. The Clashes column lists the number of clashes within the asymmetric unit, whereas Symm-Clashes lists symmetry related clashes.

Mol	Chain	Non-H	H(model)	H(added)	Clashes	Symm-Clashes
1	A	3397	0	3231	34	0
1	B	3406	0	3234	39	0
2	A	36	0	8	0	0
2	B	36	0	8	0	0
3	A	56	0	52	1	0
3	B	56	0	52	2	0
4	A	185	0	0	4	0
4	B	178	0	0	7	0
All	All	7350	0	6585	74	0

The all-atom clashscore is defined as the number of clashes found per 1000 atoms (including hydrogen atoms). The all-atom clashscore for this structure is 5.

All (74) close contacts within the same asymmetric unit are listed below, sorted by their clash magnitude.

Atom-1	Atom-2	Interatomic distance (Å)	Clash overlap (Å)
1:B:205:GLU:O	1:B:209:THR:HG23	1.82	0.80
1:A:205:GLU:O	1:A:209:THR:HG23	1.82	0.80
1:A:125:GLU:HA	1:A:128:THR:OG1	1.95	0.66
1:B:246:ILE:HG13	4:B:489:HOH:O	1.94	0.66
1:B:260:ASP:OD1	4:B:558:HOH:O	2.14	0.65
1:B:185:ASN:HD22	1:B:187:LEU:H	1.44	0.64
1:A:52:PHE:HB3	1:A:388:MET:HB3	1.80	0.63
1:B:395:GLN:H	1:B:395:GLN:HE21	1.47	0.61
1:B:125:GLU:HA	1:B:128:THR:OG1	2.01	0.61
1:B:185:ASN:HD21	1:B:187:LEU:HB2	1.66	0.61
1:B:411:HIS:HE1	4:B:557:HOH:O	1.83	0.60
1:B:136:ARG:HB2	1:B:335:ASP:OD1	2.02	0.60
1:B:185:ASN:HD22	1:B:185:ASN:C	2.07	0.58
1:B:12:ASP:HB3	4:B:554:HOH:O	2.05	0.57
1:A:280:TYR:O	1:A:286:ASN:HB2	2.04	0.56
1:B:52:PHE:HB3	1:B:388:MET:HB3	1.87	0.56
1:B:185:ASN:ND2	1:B:187:LEU:H	2.03	0.55
1:A:364:GLU:OE1	4:A:554:HOH:O	2.18	0.55
3:A:1184:NAG:H82	3:A:1316:NAG:H82	1.90	0.54

Continued on next page...

Continued from previous page...

Atom-1	Atom-2	Interatomic distance (Å)	Clash overlap (Å)
1:B:429:GLY:HA3	4:B:498:HOH:O	2.07	0.54
1:A:185:ASN:C	1:A:185:ASN:HD22	2.11	0.54
1:A:245:THR:O	1:A:248:THR:HG22	2.08	0.53
1:A:24:LEU:HB3	1:A:271:ASP:HB2	1.91	0.53
1:A:185:ASN:ND2	1:A:187:LEU:H	2.07	0.52
1:A:410:LEU:HD13	1:A:426:PHE:CD1	2.45	0.52
1:A:185:ASN:HD22	1:A:187:LEU:H	1.58	0.52
1:B:358:LEU:HD22	1:B:369:THR:HG22	1.92	0.52
1:B:24:LEU:HB3	1:B:271:ASP:HB2	1.92	0.51
1:B:118:ILE:O	1:B:122:GLN:HG3	2.11	0.51
1:B:129:ARG:HB2	1:B:164:ALA:HA	1.93	0.51
1:B:365:ASN:OD1	1:B:368:GLN:HG3	2.10	0.51
1:B:246:ILE:CG1	4:B:489:HOH:O	2.56	0.51
1:B:410:LEU:HD13	1:B:426:PHE:CD1	2.46	0.51
1:B:245:THR:O	1:B:248:THR:HG22	2.11	0.50
1:A:365:ASN:OD1	1:A:368:GLN:HG3	2.11	0.50
1:A:52:PHE:HB3	1:A:388:MET:CB	2.42	0.49
1:A:136:ARG:HG2	1:A:175:VAL:HB	1.93	0.49
1:A:185:ASN:HD21	1:A:187:LEU:HB2	1.76	0.49
1:A:295:GLY:HA3	1:A:314:SER:OG	2.13	0.48
1:B:248:THR:HG21	4:B:559:HOH:O	2.14	0.48
1:B:379:PRO:HD2	1:B:382:SER:HB3	1.96	0.48
1:A:118:ILE:O	1:A:122:GLN:HG3	2.14	0.48
1:A:429:GLY:HA3	4:A:481:HOH:O	2.13	0.48
1:B:274:GLN:OE1	1:B:277:LYS:HE3	2.14	0.48
1:B:136:ARG:HG2	1:B:175:VAL:HB	1.97	0.47
1:A:135:ILE:HG12	1:A:334:ALA:HB3	1.97	0.46
1:A:274:GLN:OE1	1:A:277:LYS:HE3	2.15	0.46
1:B:246:ILE:HA	1:B:251:VAL:HG13	1.97	0.46
1:A:136:ARG:HB2	1:A:335:ASP:OD1	2.15	0.46
1:B:78:GLU:HB3	3:B:1082:NAG:H82	1.97	0.45
1:A:164:ALA:O	1:A:166:PRO:HD3	2.17	0.45
1:B:280:TYR:O	1:B:286:ASN:HB2	2.17	0.45
1:A:282:HIS:CE1	1:A:340:ASN:HB3	2.52	0.44
1:A:339:ASP:OD1	1:A:340:ASN:N	2.51	0.44
1:B:113:LEU:O	1:B:150:PHE:HA	2.18	0.44
1:B:224:LEU:O	1:B:227:VAL:HB	2.18	0.43
1:B:95:THR:O	1:B:96:TYR:C	2.56	0.43
1:A:19:SER:O	1:A:23:HIS:HB2	2.18	0.43
1:B:350:GLY:HA3	3:B:1353:NAG:H82	2.00	0.43
1:B:62:ARG:HD3	1:B:142:ARG:CD	2.49	0.43

Continued on next page...

Continued from previous page...

Atom-1	Atom-2	Interatomic distance (Å)	Clash overlap (Å)
1:B:313:THR:OG1	1:B:314:SER:N	2.52	0.43
1:A:63:TYR:HB3	1:A:101:GLY:O	2.18	0.42
1:A:224:LEU:O	1:A:227:VAL:HB	2.19	0.42
1:A:58:ARG:HG2	1:A:59:HIS:N	2.34	0.42
1:A:83:ALA:HB3	1:A:86:PHE:CZ	2.54	0.42
1:A:386:VAL:HG22	1:A:401:VAL:HG22	2.02	0.42
1:B:52:PHE:HB3	1:B:388:MET:CB	2.48	0.42
1:A:129:ARG:HB2	1:A:164:ALA:HA	2.02	0.41
1:A:97:ASN:ND2	4:A:513:HOH:O	2.53	0.41
1:B:322:SER:HA	1:B:323:PRO:HD3	1.97	0.41
1:A:302:ALA:HB1	1:A:307:SER:O	2.21	0.40
1:B:378:VAL:HG23	1:B:378:VAL:O	2.21	0.40
1:B:19:SER:O	1:B:23:HIS:HB2	2.21	0.40
1:A:36[A]:ASN:ND2	4:A:618:HOH:O	2.54	0.40

There are no symmetry-related clashes.

5.3 Torsion angles [i](#)

5.3.1 Protein backbone [i](#)

In the following table, the Percentiles column shows the percent Ramachandran outliers of the chain as a percentile score with respect to all X-ray entries followed by that with respect to entries of similar resolution.

The Analysed column shows the number of residues for which the backbone conformation was analysed, and the total number of residues.

Mol	Chain	Analysed	Favoured	Allowed	Outliers	Percentiles	
1	A	438/444 (99%)	417 (95%)	21 (5%)	0	100	100
1	B	439/444 (99%)	415 (94%)	24 (6%)	0	100	100
All	All	877/888 (99%)	832 (95%)	45 (5%)	0	100	100

There are no Ramachandran outliers to report.

5.3.2 Protein sidechains [i](#)

In the following table, the Percentiles column shows the percent sidechain outliers of the chain as a percentile score with respect to all X-ray entries followed by that with respect to entries of similar resolution.

The Analysed column shows the number of residues for which the sidechain conformation was analysed, and the total number of residues.

Mol	Chain	Analysed	Rotameric	Outliers	Percentiles	
1	A	379/385 (98%)	361 (95%)	18 (5%)	30	37
1	B	381/385 (99%)	361 (95%)	20 (5%)	27	32
All	All	760/770 (99%)	722 (95%)	38 (5%)	28	34

All (38) residues with a non-rotameric sidechain are listed below:

Mol	Chain	Res	Type
1	A	12	ASP
1	A	43	GLU
1	A	67	SER
1	A	95	THR
1	A	105	LEU
1	A	113	LEU
1	A	185	ASN
1	A	222	ASN
1	A	227	VAL
1	A	228	THR
1	A	251	VAL
1	A	294	VAL
1	A	312	ASP
1	A	319	LEU
1	A	383	ARG
1	A	415	VAL
1	A	423	ARG
1	A	428	ARG
1	B	12	ASP
1	B	43	GLU
1	B	67	SER
1	B	85	THR
1	B	95	THR
1	B	105	LEU
1	B	113	LEU
1	B	185	ASN
1	B	211	THR
1	B	227	VAL
1	B	228	THR
1	B	241	CYS
1	B	265	ASP
1	B	294	VAL
1	B	319	LEU

Continued on next page...

Continued from previous page...

Mol	Chain	Res	Type
1	B	383	ARG
1	B	392	GLN
1	B	395	GLN
1	B	415	VAL
1	B	428	ARG

Some sidechains can be flipped to improve hydrogen bonding and reduce clashes. All (7) such sidechains are listed below:

Mol	Chain	Res	Type
1	A	155	GLN
1	A	185	ASN
1	A	390	GLN
1	B	185	ASN
1	B	390	GLN
1	B	395	GLN
1	B	411	HIS

5.3.3 RNA [i](#)

There are no RNA molecules in this entry.

5.4 Non-standard residues in protein, DNA, RNA chains [i](#)

There are no non-standard protein/DNA/RNA residues in this entry.

5.5 Carbohydrates [i](#)

There are no carbohydrates in this entry.

5.6 Ligand geometry [i](#)

10 ligands are modelled in this entry.

In the following table, the Counts columns list the number of bonds (or angles) for which Mogul statistics could be retrieved, the number of bonds (or angles) that are observed in the model and the number of bonds (or angles) that are defined in the chemical component dictionary. The Link column lists molecule types, if any, to which the group is linked. The Z score for a bond length (or angle) is the number of standard deviations the observed value is removed from the expected value. A bond length (or angle) with $|Z| > 2$ is considered an outlier worth inspection. RMSZ is the root-mean-square of all Z scores of the bond lengths (or angles).

Mol	Type	Chain	Res	Link	Bond lengths			Bond angles		
					Counts	RMSZ	# Z > 2	Counts	RMSZ	# Z > 2
3	NAG	A	1082	1	14,14,15	0.54	0	15,19,21	1.77	3 (20%)
3	NAG	A	1184	1	14,14,15	0.75	0	15,19,21	1.39	4 (26%)
3	NAG	A	1316	1	14,14,15	0.87	0	15,19,21	1.89	4 (26%)
3	NAG	A	1353	1	14,14,15	0.66	0	15,19,21	2.00	5 (33%)
2	IHS	A	500	-	36,36,36	1.29	4 (11%)	42,60,60	2.09	10 (23%)
3	NAG	B	1082	1	14,14,15	0.65	0	15,19,21	1.42	2 (13%)
3	NAG	B	1184	1	14,14,15	1.02	1 (7%)	15,19,21	3.44	8 (53%)
3	NAG	B	1316	1	14,14,15	0.87	0	15,19,21	2.16	4 (26%)
3	NAG	B	1353	1	14,14,15	0.74	0	15,19,21	1.37	2 (13%)
2	IHS	B	500	-	36,36,36	1.26	4 (11%)	42,60,60	2.43	16 (38%)

In the following table, the Chirals column lists the number of chiral outliers, the number of chiral centers analysed, the number of these observed in the model and the number defined in the chemical component dictionary. Similar counts are reported in the Torsion and Rings columns. '-' means no outliers of that kind were identified.

Mol	Type	Chain	Res	Link	Chirals	Torsions	Rings
3	NAG	A	1082	1	-	0/6/23/26	0/1/1/1
3	NAG	A	1184	1	-	0/6/23/26	0/1/1/1
3	NAG	A	1316	1	-	0/6/23/26	0/1/1/1
3	NAG	A	1353	1	-	0/6/23/26	0/1/1/1
2	IHS	A	500	-	-	0/30/54/54	0/1/1/1
3	NAG	B	1082	1	-	0/6/23/26	0/1/1/1
3	NAG	B	1184	1	-	0/6/23/26	0/1/1/1
3	NAG	B	1316	1	-	0/6/23/26	0/1/1/1
3	NAG	B	1353	1	-	0/6/23/26	0/1/1/1
2	IHS	B	500	-	-	0/30/54/54	0/1/1/1

All (9) bond length outliers are listed below:

Mol	Chain	Res	Type	Atoms	Z	Observed(Å)	Ideal(Å)
2	A	500	IHS	O1-C1	-4.50	1.36	1.46
2	B	500	IHS	O1-C1	-3.69	1.38	1.46
2	B	500	IHS	O12-C2	-3.14	1.39	1.46
2	A	500	IHS	O14-C4	-2.82	1.40	1.46
2	B	500	IHS	O15-C5	-2.43	1.41	1.46
2	B	500	IHS	O14-C4	-2.42	1.41	1.46
2	A	500	IHS	O14-S4	-2.05	1.50	1.56
2	A	500	IHS	O12-C2	-2.03	1.42	1.46
3	B	1184	NAG	O5-C5	2.32	1.48	1.43

All (58) bond angle outliers are listed below:

Mol	Chain	Res	Type	Atoms	Z	Observed(°)	Ideal(°)
2	B	500	IHS	C5-C6-C1	-7.42	94.01	110.46
2	A	500	IHS	C5-C6-C1	-5.72	97.79	110.46
3	B	1184	NAG	C4-C3-C2	-4.78	104.02	111.02
3	B	1184	NAG	C2-N2-C7	-4.47	116.42	122.94
3	A	1082	NAG	O5-C1-C2	-4.33	105.45	111.47
2	A	500	IHS	O14-C4-C3	-4.30	98.74	108.52
2	A	500	IHS	C3-O13-S3	-4.21	110.87	118.97
3	B	1184	NAG	O5-C1-C2	-3.94	105.99	111.47
3	B	1184	NAG	C3-C4-C5	-3.82	103.48	110.22
3	A	1316	NAG	O3-C3-C2	-3.60	101.67	109.39
3	B	1082	NAG	O5-C1-C2	-3.43	106.70	111.47
3	A	1353	NAG	C2-N2-C7	-3.39	118.00	122.94
3	B	1184	NAG	C6-C5-C4	-3.31	105.25	113.00
3	A	1353	NAG	O5-C1-C2	-3.24	106.96	111.47
2	B	500	IHS	O14-C4-C5	-3.14	101.39	108.52
3	B	1316	NAG	O3-C3-C2	-3.10	102.74	109.39
2	B	500	IHS	C3-O13-S3	-3.09	113.02	118.97
3	A	1082	NAG	C3-C4-C5	-3.02	104.90	110.22
3	A	1353	NAG	O4-C4-C3	-2.89	104.06	110.36
2	B	500	IHS	O23-S3-O43	-2.56	101.22	112.25
3	A	1316	NAG	C2-N2-C7	-2.20	119.73	122.94
3	B	1353	NAG	O5-C1-C2	-2.16	108.47	111.47
3	A	1184	NAG	C3-C4-C5	-2.08	106.54	110.22
3	B	1316	NAG	O7-C7-C8	-2.06	118.31	122.06
3	A	1184	NAG	C4-C3-C2	-2.03	108.04	111.02
2	B	500	IHS	O42-S2-O22	-2.02	103.55	112.25
2	B	500	IHS	O12-C2-C3	2.01	113.07	108.52
2	B	500	IHS	O35-S5-O25	2.05	116.05	108.79
3	A	1184	NAG	O4-C4-C5	2.16	114.73	109.28
2	B	500	IHS	C5-O15-S5	2.16	123.13	118.97
2	B	500	IHS	O33-S3-O23	2.17	116.47	108.79
3	A	1184	NAG	O3-C3-C2	2.18	114.06	109.39
3	A	1353	NAG	O4-C4-C5	2.21	114.85	109.28
2	B	500	IHS	O32-S2-O42	2.33	117.05	108.79
2	B	500	IHS	C6-C1-C2	2.41	115.80	110.46
3	B	1316	NAG	C4-C3-C2	2.46	114.63	111.02
3	B	1082	NAG	C2-N2-C7	2.46	126.54	122.94
2	A	500	IHS	O15-C5-C4	2.47	114.13	108.52
2	A	500	IHS	O13-C3-C4	2.67	114.57	108.52
3	B	1184	NAG	C1-O5-C5	2.80	116.03	112.17
2	B	500	IHS	C4-C3-C2	2.87	116.81	110.46
2	B	500	IHS	O13-C3-C4	2.95	115.22	108.52

Continued on next page...

Continued from previous page...

Mol	Chain	Res	Type	Atoms	Z	Observed(°)	Ideal(°)
3	A	1082	NAG	C2-N2-C7	3.03	127.36	122.94
2	A	500	IHS	C2-O12-S2	3.08	124.90	118.97
3	A	1353	NAG	C6-C5-C4	3.17	120.42	113.00
3	B	1184	NAG	O4-C4-C5	3.17	117.28	109.28
2	B	500	IHS	C6-O16-S6	3.34	125.39	118.97
2	A	500	IHS	C4-C3-C2	3.39	117.97	110.46
2	A	500	IHS	C6-C1-C2	3.53	118.29	110.46
3	A	1316	NAG	O4-C4-C5	3.54	118.20	109.28
3	A	1316	NAG	C1-O5-C5	3.62	117.15	112.17
3	B	1353	NAG	C1-O5-C5	3.70	117.27	112.17
2	A	500	IHS	C6-O16-S6	3.83	126.34	118.97
2	B	500	IHS	O15-C5-C4	4.12	117.88	108.52
2	A	500	IHS	O12-C2-C1	4.33	118.35	108.52
3	B	1316	NAG	C1-O5-C5	6.20	120.72	112.17
3	B	1184	NAG	C1-C2-N2	8.22	124.52	110.49
2	B	500	IHS	C2-O12-S2	8.31	134.97	118.97

There are no chirality outliers.

There are no torsion outliers.

There are no ring outliers.

4 monomers are involved in 3 short contacts:

Mol	Chain	Res	Type	Clashes	Symm-Clashes
3	A	1184	NAG	1	0
3	A	1316	NAG	1	0
3	B	1082	NAG	1	0
3	B	1353	NAG	1	0

5.7 Other polymers [i](#)

There are no such residues in this entry.

5.8 Polymer linkage issues [i](#)

There are no chain breaks in this entry.

6 Fit of model and data [i](#)

6.1 Protein, DNA and RNA chains [i](#)

In the following table, the column labelled ‘#RSRZ> 2’ contains the number (and percentage) of RSRZ outliers, followed by percent RSRZ outliers for the chain as percentile scores relative to all X-ray entries and entries of similar resolution. The OWAB column contains the minimum, median, 95th percentile and maximum values of the occupancy-weighted average B-factor per residue. The column labelled ‘Q< 0.9’ lists the number of (and percentage) of residues with an average occupancy less than 0.9.

Mol	Chain	Analysed	<RSRZ>	#RSRZ>2	OWAB(Å ²)	Q<0.9
1	A	438/444 (98%)	-0.53	2 (0%) 90 90	13, 25, 46, 56	0
1	B	438/444 (98%)	-0.51	3 (0%) 87 86	13, 25, 46, 55	0
All	All	876/888 (98%)	-0.52	5 (0%) 89 88	13, 25, 46, 56	0

All (5) RSRZ outliers are listed below:

Mol	Chain	Res	Type	RSRZ
1	B	392	GLN	3.9
1	A	444	ALA	3.7
1	B	393	ALA	2.7
1	A	393	ALA	2.5
1	B	85	THR	2.2

6.2 Non-standard residues in protein, DNA, RNA chains [i](#)

There are no non-standard protein/DNA/RNA residues in this entry.

6.3 Carbohydrates [i](#)

There are no carbohydrates in this entry.

6.4 Ligands [i](#)

In the following table, the Atoms column lists the number of modelled atoms in the group and the number defined in the chemical component dictionary. LLDF column lists the quality of electron density of the group with respect to its neighbouring residues in protein, DNA or RNA chains. The B-factors column lists the minimum, median, 95th percentile and maximum values of B factors of atoms in the group. The column labelled ‘Q< 0.9’ lists the number of atoms with occupancy less than 0.9.

Mol	Type	Chain	Res	Atoms	RSCC	RSR	LLDF	B-factors(\AA^2)	Q<0.9
2	IHS	A	500	36/36	0.98	0.12	1.75	11,27,32,32	36
3	NAG	A	1316	14/15	0.91	0.12	1.15	31,36,39,39	0
3	NAG	B	1184	14/15	0.87	0.14	0.99	32,38,47,48	0
3	NAG	A	1353	14/15	0.96	0.13	0.93	22,25,31,32	0
3	NAG	B	1353	14/15	0.97	0.11	0.38	21,23,28,33	0
2	IHS	B	500	36/36	0.98	0.11	0.35	12,27,30,31	36
3	NAG	B	1316	14/15	0.90	0.11	0.25	35,39,41,41	0
3	NAG	A	1184	14/15	0.92	0.12	-0.28	27,36,41,45	0
3	NAG	B	1082	14/15	0.94	0.09	-0.45	30,39,45,46	0
3	NAG	A	1082	14/15	0.95	0.10	-0.91	26,39,47,51	0

6.5 Other polymers [i](#)

There are no such residues in this entry.