



Full wwPDB X-ray Structure Validation Report ⓘ

Feb 14, 2017 – 06:06 am GMT

PDB ID : 1K6M
Title : Crystal Structure of Human Liver 6-Phosphofructo-2-Kinase/Fructose-2,6-Bisphosphatase
Authors : Lee, Y.H.; Li, Y.; Uyeda, K.; Hasemann, C.A.
Deposited on : 2001-10-16
Resolution : 2.40 Å(reported)

This is a Full wwPDB X-ray Structure Validation Report for a publicly released PDB entry.

We welcome your comments at validation@mail.wwpdb.org

A user guide is available at

<http://wwpdb.org/validation/2016/XrayValidationReportHelp>

with specific help available everywhere you see the ⓘ symbol.

The following versions of software and data (see [references ⓘ](#)) were used in the production of this report:

MolProbity : 4.02b-467
Mogul : 1.7.2 (RC1), CSD as538be (2017)
Xtriage (Phenix) : 1.9-1692
EDS : trunk28620
Percentile statistics : 20161228.v01 (using entries in the PDB archive December 28th 2016)
Refmac : 5.8.0135
CCP4 : 6.5.0
Ideal geometry (proteins) : Engh & Huber (2001)
Ideal geometry (DNA, RNA) : Parkinson et al. (1996)
Validation Pipeline (wwPDB-VP) : recalc28949

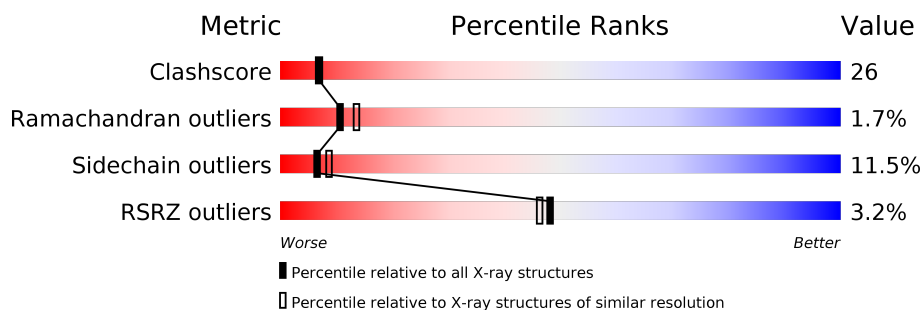
1 Overall quality at a glance

The following experimental techniques were used to determine the structure:

X-RAY DIFFRACTION

The reported resolution of this entry is 2.40 Å.

Percentile scores (ranging between 0-100) for global validation metrics of the entry are shown in the following graphic. The table shows the number of entries on which the scores are based.



Metric	Whole archive (#Entries)	Similar resolution (#Entries, resolution range(Å))
Clashscore	112137	3674 (2.40-2.40)
Ramachandran outliers	110173	3616 (2.40-2.40)
Sidechain outliers	110143	3617 (2.40-2.40)
RSRZ outliers	101464	3195 (2.40-2.40)

The table below summarises the geometric issues observed across the polymeric chains and their fit to the electron density. The red, orange, yellow and green segments on the lower bar indicate the fraction of residues that contain outliers for ≥ 3 , 2, 1 and 0 types of geometric quality criteria. A grey segment represents the fraction of residues that are not modelled. The numeric value for each fraction is indicated below the corresponding segment, with a dot representing fractions $\leq 5\%$. The upper red bar (where present) indicates the fraction of residues that have poor fit to the electron density. The numeric value is given above the bar.

Mol	Chain	Length	Quality of chain
1	A	432	<div> <div>3%</div> <div>57%</div> <div>34%</div> <div>8%</div> </div>
1	B	432	<div> <div>3%</div> <div>58%</div> <div>33%</div> <div>7%</div> </div>

2 Entry composition

There are 4 unique types of molecules in this entry. The entry contains 7545 atoms, of which 12 are hydrogens and 0 are deuteriums.

In the tables below, the ZeroOcc column contains the number of atoms modelled with zero occupancy, the AltConf column contains the number of residues with at least one atom in alternate conformation and the Trace column contains the number of residues modelled with at most 2 atoms.

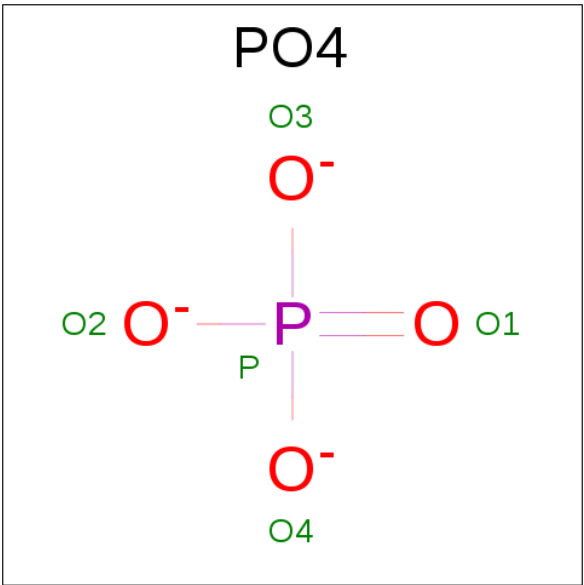
- Molecule 1 is a protein called 6-phosphofructo-2-kinase/fructose-2,6-biphosphatase 2-phosphatase.

Mol	Chain	Residues	Atoms					ZeroOcc	AltConf	Trace
1	A	432	Total	C	N	O	S	0	0	0
			3527	2237	605	666	19			
1	B	432	Total	C	N	O	S	0	0	0
			3527	2237	605	666	19			

There are 8 discrepancies between the modelled and reference sequences:

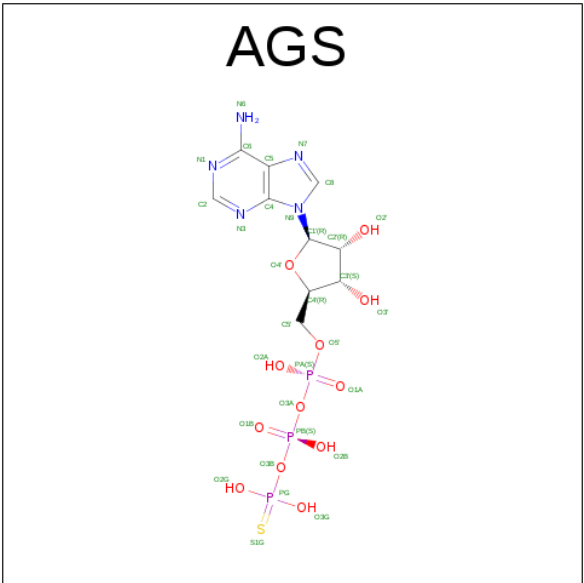
Chain	Residue	Modelled	Actual	Comment	Reference
A	67	PHE	TRP	ENGINEERED	UNP P16118
A	301	PHE	TRP	ENGINEERED	UNP P16118
A	322	PHE	TRP	ENGINEERED	UNP P16118
A	409	GLU	ASP	ENGINEERED	UNP P16118
B	67	PHE	TRP	ENGINEERED	UNP P16118
B	301	PHE	TRP	ENGINEERED	UNP P16118
B	322	PHE	TRP	ENGINEERED	UNP P16118
B	409	GLU	ASP	ENGINEERED	UNP P16118

- Molecule 2 is PHOSPHATE ION (three-letter code: PO4) (formula: O₄P).



Mol	Chain	Residues	Atoms			ZeroOcc	AltConf
2	A	1	Total	O	P	0	0
			5	4	1		
2	A	1	Total	O	P	0	0
			5	4	1		
2	B	1	Total	O	P	0	0
			5	4	1		
2	B	1	Total	O	P	0	0
			5	4	1		

- Molecule 3 is PHOSPHOTHIOPHOSPHORIC ACID-ADENYLATE ESTER (three-letter code: AGS) (formula: C₁₀H₁₆N₅O₁₂P₃S).



Mol	Chain	Residues	Atoms							ZeroOcc	AltConf
3	A	1	Total	C	H	N	O	P	S	0	0
			37	10	6	5	12	3	1		
3	B	1	Total	C	H	N	O	P	S	0	0
			37	10	6	5	12	3	1		

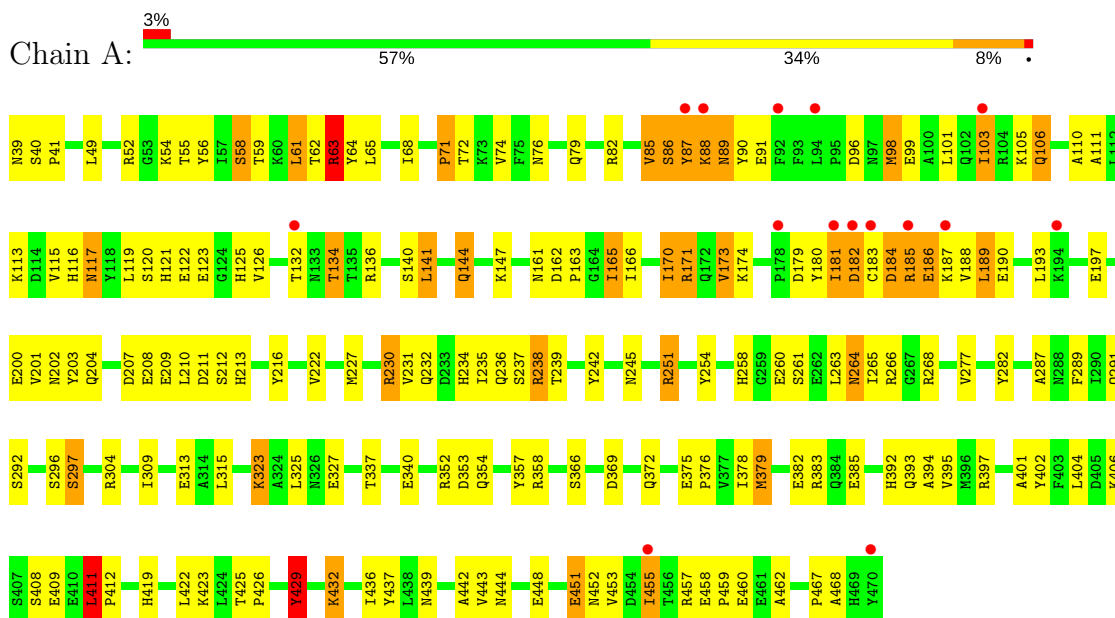
- Molecule 4 is water.

Mol	Chain	Residues	Atoms		ZeroOcc	AltConf
4	A	196	Total	O	0	0
			196	196		
4	B	201	Total	O	0	0
			201	201		

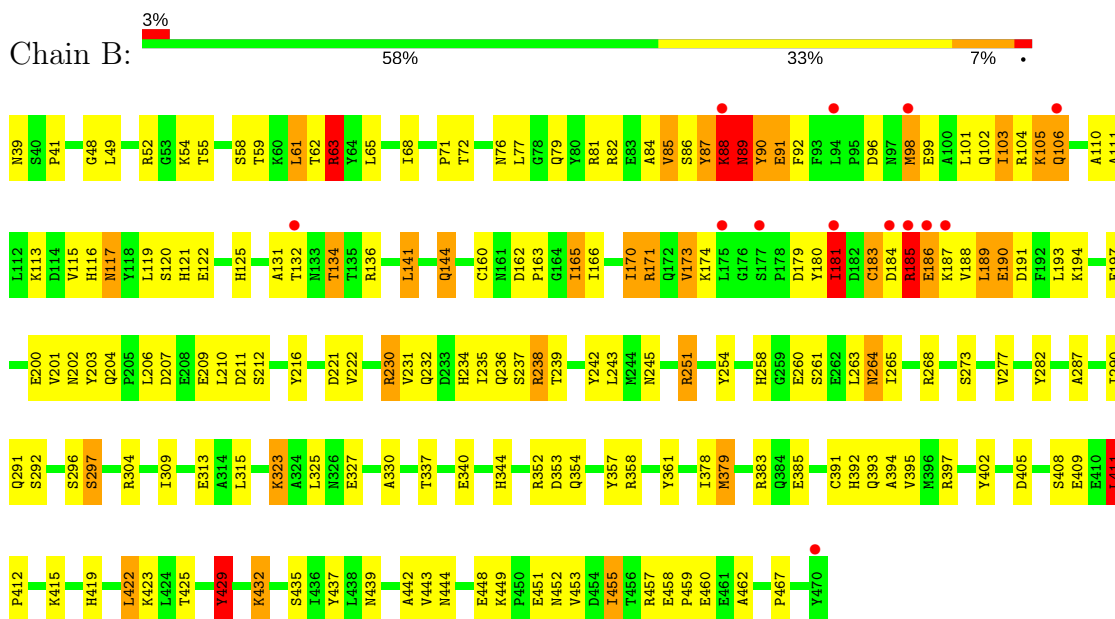
3 Residue-property plots

These plots are drawn for all protein, RNA and DNA chains in the entry. The first graphic for a chain summarises the proportions of the various outlier classes displayed in the second graphic. The second graphic shows the sequence view annotated by issues in geometry and electron density. Residues are color-coded according to the number of geometric quality criteria for which they contain at least one outlier: green = 0, yellow = 1, orange = 2 and red = 3 or more. A red dot above a residue indicates a poor fit to the electron density ($RSRZ > 2$). Stretches of 2 or more consecutive residues without any outlier are shown as a green connector. Residues present in the sample, but not in the model, are shown in grey.

- Molecule 1: 6-phosphofructo-2-kinase/fructose-2,6-biphosphatase 2-phosphatase



- Molecule 1: 6-phosphofructo-2-kinase/fructose-2,6-biphosphatase 2-phosphatase



4 Data and refinement statistics

Property	Value	Source
Space group	C 1 2 1	Depositor
Cell constants a, b, c, α , β , γ	74.98Å 185.33Å 89.67Å 90.00° 90.70° 90.00°	Depositor
Resolution (Å)	30.00 – 2.40 29.89 – 2.40	Depositor EDS
% Data completeness (in resolution range)	10.0 (30.00-2.40) 40.7 (29.89-2.40)	Depositor EDS
R_{merge}	0.07	Depositor
R_{sym}	0.07	Depositor
$\langle I/\sigma(I) \rangle$ ¹	4.24 (at 2.39Å)	Xtriage
Refinement program	CNS	Depositor
R, R_{free}	0.217 , 0.257 0.211 , (Not available)	Depositor DCC
R_{free} test set	No test flags present.	DCC
Wilson B-factor (Å ²)	45.2	Xtriage
Anisotropy	0.271	Xtriage
Bulk solvent k_{sol} (e/Å ³), B_{sol} (Å ²)	0.35 , 55.6	EDS
L-test for twinning ²	$\langle L \rangle = 0.50$, $\langle L^2 \rangle = 0.33$	Xtriage
Estimated twinning fraction	0.033 for h,-k,-l	Xtriage
F_o, F_c correlation	0.94	EDS
Total number of atoms	7545	wwPDB-VP
Average B, all atoms (Å ²)	42.0	wwPDB-VP

Xtriage's analysis on translational NCS is as follows: *The largest off-origin peak in the Patterson function is 6.23% of the height of the origin peak. No significant pseudotranslation is detected.*

¹Intensities estimated from amplitudes.

²Theoretical values of $\langle |L| \rangle$, $\langle L^2 \rangle$ for acentric reflections are 0.5, 0.333 respectively for untwinned datasets, and 0.375, 0.2 for perfectly twinned datasets.

5 Model quality

5.1 Standard geometry

Bond lengths and bond angles in the following residue types are not validated in this section: PO4, AGS

The Z score for a bond length (or angle) is the number of standard deviations the observed value is removed from the expected value. A bond length (or angle) with $|Z| > 5$ is considered an outlier worth inspection. RMSZ is the root-mean-square of all Z scores of the bond lengths (or angles).

Mol	Chain	Bond lengths		Bond angles	
		RMSZ	# Z >5	RMSZ	# Z >5
1	A	0.57	0/3601	0.80	6/4870 (0.1%)
1	B	0.57	0/3601	0.79	4/4870 (0.1%)
All	All	0.57	0/7202	0.79	10/9740 (0.1%)

There are no bond length outliers.

All (10) bond angle outliers are listed below:

Mol	Chain	Res	Type	Atoms	Z	Observed(°)	Ideal(°)
1	A	88	LYS	N-CA-C	7.76	131.95	111.00
1	A	63	ARG	NE-CZ-NH1	7.60	124.10	120.30
1	A	87	TYR	N-CA-C	7.10	130.18	111.00
1	B	63	ARG	NE-CZ-NH1	6.99	123.80	120.30
1	A	411	LEU	CA-CB-CG	6.80	130.94	115.30
1	B	411	LEU	CA-CB-CG	6.62	130.53	115.30
1	A	63	ARG	NE-CZ-NH2	-6.58	117.01	120.30
1	B	87	TYR	N-CA-C	5.69	126.35	111.00
1	B	63	ARG	NE-CZ-NH2	-5.43	117.59	120.30
1	A	89	ASN	N-CA-C	5.03	124.58	111.00

There are no chirality outliers.

There are no planarity outliers.

5.2 Too-close contacts

In the following table, the Non-H and H(model) columns list the number of non-hydrogen atoms and hydrogen atoms in the chain respectively. The H(added) column lists the number of hydrogen atoms added and optimized by MolProbity. The Clashes column lists the number of clashes within the asymmetric unit, whereas Symm-Clashes lists symmetry related clashes.

Mol	Chain	Non-H	H(model)	H(added)	Clashes	Symm-Clashes
1	A	3527	0	3482	181	0
1	B	3527	0	3482	186	0
2	A	10	0	0	0	0
2	B	10	0	0	1	0
3	A	31	6	12	4	0
3	B	31	6	12	3	0
4	A	196	0	0	50	1
4	B	201	0	0	31	1
All	All	7533	12	6988	363	1

The all-atom clashscore is defined as the number of clashes found per 1000 atoms (including hydrogen atoms). The all-atom clashscore for this structure is 26.

All (363) close contacts within the same asymmetric unit are listed below, sorted by their clash magnitude.

Atom-1	Atom-2	Interatomic distance (Å)	Clash overlap (Å)
1:A:126:VAL:HG23	4:A:656:HOH:O	1.52	1.09
1:B:409:GLU:HG3	4:B:688:HOH:O	1.52	1.07
1:A:58:SER:HB3	4:A:682:HOH:O	1.56	1.06
1:A:238:ARG:HA	1:A:238:ARG:HE	1.26	1.00
1:A:378:ILE:HG22	4:A:671:HOH:O	1.60	0.99
1:A:63:ARG:HA	4:A:709:HOH:O	1.60	0.99
1:A:125:HIS:HB3	4:A:656:HOH:O	1.61	0.99
1:A:451:GLU:HG2	4:A:661:HOH:O	1.62	0.99
1:B:238:ARG:HE	1:B:238:ARG:HA	1.28	0.98
1:A:63:ARG:HH11	1:A:63:ARG:HB2	1.26	0.97
1:B:189:LEU:HG	4:B:778:HOH:O	1.64	0.97
1:A:63:ARG:CB	1:A:63:ARG:HH11	1.77	0.96
1:A:74:VAL:HG11	4:A:682:HOH:O	1.67	0.95
1:B:63:ARG:HB2	1:B:63:ARG:HH11	1.32	0.94
1:A:208:GLU:HB3	4:A:743:HOH:O	1.68	0.93
1:B:206:LEU:HG	4:B:714:HOH:O	1.70	0.92
1:A:409:GLU:HG3	4:A:623:HOH:O	1.70	0.90
1:B:63:ARG:CB	1:B:63:ARG:HH11	1.85	0.90
1:A:201:VAL:HG12	1:A:202:ASN:OD1	1.76	0.85
1:A:162:ASP:HB3	1:A:165:ILE:HG13	1.56	0.85
1:B:201:VAL:HG12	1:B:202:ASN:OD1	1.76	0.85
1:A:406:LYS:HG2	4:A:672:HOH:O	1.76	0.83
1:A:85:VAL:HG12	1:A:86:SER:H	1.43	0.83
1:B:63:ARG:HB2	1:B:63:ARG:NH1	1.94	0.83
1:B:238:ARG:NE	1:B:238:ARG:HA	1.92	0.83
1:A:63:ARG:NH1	1:A:63:ARG:CB	2.42	0.82

Continued on next page...

Continued from previous page...

Atom-1	Atom-2	Interatomic distance (Å)	Clash overlap (Å)
1:A:63:ARG:NH1	1:A:63:ARG:HB2	1.94	0.82
1:B:162:ASP:HB3	1:B:165:ILE:HG13	1.61	0.82
1:A:238:ARG:HA	1:A:238:ARG:NE	1.89	0.81
1:A:63:ARG:NH2	1:A:402:TYR:O	2.12	0.81
1:B:160:CYS:HB3	4:B:634:HOH:O	1.79	0.81
1:A:426:PRO:HD2	4:A:703:HOH:O	1.81	0.81
1:A:87:TYR:HE2	1:A:181:ILE:HG13	1.47	0.80
1:B:136:ARG:HH12	1:B:210:LEU:HB3	1.47	0.79
1:B:63:ARG:CB	1:B:63:ARG:NH1	2.45	0.79
1:A:136:ARG:HH12	1:A:210:LEU:HB3	1.48	0.77
1:A:82:ARG:HD3	1:A:179:ASP:OD1	1.84	0.77
1:B:39:ASN:HB2	4:B:733:HOH:O	1.84	0.76
1:B:189:LEU:CD1	1:B:193:LEU:HG	2.16	0.76
1:B:160:CYS:SG	4:B:667:HOH:O	2.43	0.75
1:B:304:ARG:HG3	1:B:323:LYS:HA	1.67	0.75
1:A:304:ARG:HG3	1:A:323:LYS:HA	1.67	0.75
1:B:245:ASN:OD1	1:B:383:ARG:HD3	1.88	0.74
1:A:61:LEU:HD11	1:A:239:THR:HG23	1.70	0.73
1:B:85:VAL:HG13	1:B:86:SER:N	2.00	0.73
1:A:189:LEU:CD1	1:A:193:LEU:HG	2.19	0.73
1:A:245:ASN:OD1	1:A:383:ARG:HD3	1.87	0.73
1:B:203:TYR:HB3	4:B:798:HOH:O	1.87	0.73
1:B:415:LYS:HE3	4:B:699:HOH:O	1.88	0.73
1:A:59:THR:O	1:A:63:ARG:HG2	1.89	0.72
1:B:448:GLU:HG3	4:B:612:HOH:O	1.89	0.72
1:B:76:ASN:HB3	1:B:79:GLN:HG3	1.72	0.72
1:A:87:TYR:CE2	1:A:181:ILE:HG13	2.24	0.72
1:A:238:ARG:HE	1:A:238:ARG:CA	1.95	0.71
1:A:98:MET:HA	1:A:101:LEU:HD12	1.71	0.71
1:A:76:ASN:HB3	1:A:79:GLN:HG3	1.72	0.71
1:A:85:VAL:HG12	1:A:86:SER:N	2.06	0.70
1:A:372:GLN:HB2	4:A:719:HOH:O	1.91	0.70
1:A:121:HIS:HD2	4:A:791:HOH:O	1.74	0.70
1:A:63:ARG:CG	1:A:63:ARG:HH11	2.04	0.70
1:B:61:LEU:HD11	1:B:239:THR:HG23	1.74	0.70
1:B:59:THR:O	1:B:63:ARG:HG2	1.92	0.70
1:B:98:MET:HA	1:B:101:LEU:HD12	1.74	0.69
1:A:401:ALA:HA	4:A:672:HOH:O	1.92	0.69
1:B:166:ILE:HD11	4:B:634:HOH:O	1.90	0.69
1:B:419:HIS:CE1	1:B:442:ALA:HB2	2.27	0.69
1:A:181:ILE:O	1:A:182:ASP:C	2.31	0.69

Continued on next page...

Continued from previous page...

Atom-1	Atom-2	Interatomic distance (Å)	Clash overlap (Å)
1:B:87:TYR:CD2	1:B:179:ASP:HB3	2.28	0.69
1:A:171:ARG:CZ	4:A:729:HOH:O	2.41	0.68
1:B:63:ARG:HH11	1:B:63:ARG:CG	2.05	0.68
1:B:162:ASP:O	1:B:166:ILE:HD12	1.94	0.68
1:B:183:CYS:SG	1:B:184:ASP:N	2.66	0.68
1:A:181:ILE:O	1:A:183:CYS:N	2.27	0.68
1:B:184:ASP:HB2	1:B:187:LYS:HG3	1.77	0.67
1:A:162:ASP:O	1:A:166:ILE:HD12	1.94	0.67
1:A:425:THR:HB	1:A:432:LYS:HG3	1.78	0.66
1:A:166:ILE:O	1:A:170:ILE:HG12	1.96	0.66
1:B:282:TYR:CE1	1:B:419:HIS:HA	2.30	0.66
1:A:184:ASP:OD1	1:A:187:LYS:HG3	1.95	0.66
1:A:419:HIS:CE1	1:A:442:ALA:HB2	2.30	0.65
1:B:166:ILE:O	1:B:170:ILE:HG12	1.97	0.65
1:B:111:ALA:O	1:B:115:VAL:HG23	1.96	0.65
1:B:185:ARG:CG	1:B:186:GLU:H	2.10	0.65
1:A:162:ASP:CB	1:A:165:ILE:HG13	2.28	0.64
1:A:282:TYR:CE1	1:A:419:HIS:HA	2.33	0.64
1:A:68:ILE:HG23	4:A:622:HOH:O	1.98	0.64
1:B:92:PHE:HE2	1:B:104:ARG:HD2	1.63	0.64
1:A:111:ALA:O	1:A:115:VAL:HG23	1.98	0.63
1:A:468:ALA:HB2	4:A:733:HOH:O	1.96	0.63
1:A:238:ARG:CA	1:A:238:ARG:NE	2.56	0.63
1:A:432:LYS:HE3	4:A:702:HOH:O	1.98	0.63
1:A:134:THR:HG22	1:A:203:TYR:CD1	2.33	0.63
1:B:425:THR:HB	1:B:432:LYS:HG3	1.79	0.63
1:B:185:ARG:CG	1:B:186:GLU:N	2.62	0.62
1:A:242:TYR:HD1	1:A:379:MET:HE1	1.65	0.61
1:B:134:THR:HG22	1:B:203:TYR:CD1	2.35	0.61
1:A:261:SER:O	1:A:264:ASN:HB2	2.01	0.61
1:A:117:ASN:HB2	4:A:791:HOH:O	2.01	0.61
1:B:87:TYR:CD2	1:B:88:LYS:N	2.69	0.61
1:A:106:GLN:OE1	1:A:106:GLN:HA	2.01	0.61
1:B:354:GLN:HE22	1:B:455:ILE:HD13	1.67	0.60
1:B:63:ARG:HE	1:B:405:ASP:HB2	1.66	0.60
1:B:234:HIS:O	1:B:238:ARG:HG2	2.01	0.60
1:B:452:ASN:ND2	1:B:457:ARG:HB2	2.16	0.60
1:A:68:ILE:HG12	4:A:622:HOH:O	2.01	0.60
1:A:125:HIS:C	4:A:656:HOH:O	2.39	0.60
1:A:184:ASP:CG	1:A:187:LYS:HB2	2.21	0.60
1:A:210:LEU:HD22	1:B:171:ARG:NH1	2.17	0.59

Continued on next page...

Continued from previous page...

Atom-1	Atom-2	Interatomic distance (Å)	Clash overlap (Å)
1:B:449:LYS:HA	4:B:671:HOH:O	2.03	0.59
1:B:187:LYS:HA	1:B:190:GLU:OE1	2.03	0.59
1:A:193:LEU:O	1:A:197:GLU:HG3	2.03	0.59
1:A:354:GLN:HE22	1:A:455:ILE:HD13	1.68	0.59
1:B:89:ASN:N	1:B:89:ASN:ND2	2.48	0.58
1:B:68:ILE:CD1	4:B:752:HOH:O	2.50	0.58
1:B:234:HIS:HD2	4:B:718:HOH:O	1.85	0.58
1:B:99:GLU:O	1:B:103:ILE:HD13	2.02	0.58
1:B:260:GLU:OE2	1:B:443:VAL:HG13	2.04	0.58
1:A:260:GLU:OE2	1:A:443:VAL:HG13	2.03	0.58
1:B:63:ARG:NH2	1:B:402:TYR:O	2.34	0.58
1:B:393:GLN:O	1:B:397:ARG:HG3	2.04	0.58
1:A:99:GLU:O	1:A:103:ILE:HD13	2.04	0.58
1:B:136:ARG:NH1	1:B:210:LEU:HB3	2.18	0.58
1:B:136:ARG:HG3	1:B:204:GLN:OE1	2.04	0.58
1:A:452:ASN:ND2	1:A:457:ARG:HB2	2.19	0.57
1:B:261:SER:O	1:B:264:ASN:HB2	2.04	0.57
1:A:251:ARG:HD3	1:A:385:GLU:O	2.04	0.57
1:A:136:ARG:NH1	1:A:210:LEU:HB3	2.19	0.57
1:B:353:ASP:HB3	1:B:453:VAL:HG12	1.87	0.57
1:B:162:ASP:CB	1:B:165:ILE:HG13	2.33	0.57
1:A:254:TYR:CE2	1:A:423:LYS:HG3	2.39	0.57
1:B:90:TYR:HB3	1:B:191:ASP:OD2	2.05	0.57
1:B:160:CYS:CB	4:B:634:HOH:O	2.46	0.57
1:B:106:GLN:OE1	1:B:106:GLN:HA	2.03	0.57
1:B:238:ARG:CA	1:B:238:ARG:HE	1.96	0.57
1:A:170:ILE:HG22	1:A:174:LYS:HB2	1.86	0.56
1:A:62:THR:HG23	1:A:72:THR:HG22	1.85	0.56
1:B:238:ARG:HG3	4:B:752:HOH:O	2.05	0.56
1:A:353:ASP:HB3	1:A:453:VAL:HG12	1.87	0.56
1:B:170:ILE:HG22	1:B:174:LYS:HB2	1.88	0.56
1:B:85:VAL:HG13	1:B:86:SER:O	2.06	0.56
1:B:92:PHE:CE2	1:B:104:ARG:HD2	2.40	0.56
1:A:263:LEU:HD22	1:A:268:ARG:HB2	1.87	0.56
1:A:287:ALA:O	1:A:291:GLN:HG3	2.07	0.55
1:B:193:LEU:O	1:B:197:GLU:HG3	2.06	0.55
1:B:254:TYR:CE2	1:B:423:LYS:HG3	2.42	0.55
1:B:173:VAL:HG21	3:B:503:AGS:H5'1	1.89	0.55
1:A:382:GLU:HG3	4:A:671:HOH:O	2.05	0.55
1:A:68:ILE:CG2	4:A:622:HOH:O	2.54	0.55
1:A:89:ASN:HB3	1:A:91:GLU:H	1.71	0.55

Continued on next page...

Continued from previous page...

Atom-1	Atom-2	Interatomic distance (Å)	Clash overlap (Å)
1:A:393:GLN:O	1:A:397:ARG:HG3	2.06	0.55
1:B:238:ARG:NE	1:B:238:ARG:CA	2.59	0.55
1:A:180:TYR:O	1:A:182:ASP:N	2.40	0.55
1:A:383:ARG:NH2	4:A:753:HOH:O	2.39	0.54
1:B:189:LEU:HD12	1:B:193:LEU:HG	1.88	0.54
1:A:134:THR:HG22	1:A:203:TYR:CE1	2.42	0.54
1:A:234:HIS:O	1:A:238:ARG:HG2	2.08	0.54
1:B:89:ASN:HD22	1:B:89:ASN:N	2.05	0.54
1:A:258:HIS:CD2	1:A:258:HIS:H	2.25	0.54
1:A:39:ASN:HB3	4:A:780:HOH:O	2.07	0.54
1:B:258:HIS:CD2	1:B:258:HIS:H	2.25	0.53
1:B:344:HIS:HE1	4:B:792:HOH:O	1.91	0.53
1:B:411:LEU:HD12	1:B:411:LEU:C	2.29	0.53
1:A:180:TYR:O	1:A:181:ILE:C	2.46	0.53
1:B:185:ARG:HG3	1:B:186:GLU:H	1.73	0.53
1:B:287:ALA:O	1:B:291:GLN:HG3	2.09	0.53
1:A:173:VAL:HG21	3:A:503:AGS:H5'1	1.89	0.53
1:B:88:LYS:H	1:B:89:ASN:ND2	2.07	0.53
1:B:110:ALA:O	1:B:113:LYS:HB2	2.09	0.53
1:A:468:ALA:CB	4:A:733:HOH:O	2.55	0.53
1:A:79:GLN:NE2	4:A:758:HOH:O	2.38	0.53
1:A:98:MET:HB3	4:A:763:HOH:O	2.08	0.53
1:B:419:HIS:ND1	1:B:442:ALA:HB2	2.24	0.53
1:A:136:ARG:HG3	1:A:204:GLN:OE1	2.10	0.52
1:A:230:ARG:CG	1:A:230:ARG:HH11	2.22	0.52
1:B:263:LEU:HD22	1:B:268:ARG:HB2	1.91	0.52
1:A:173:VAL:HG11	1:A:429:TYR:CZ	2.44	0.52
1:B:230:ARG:CG	1:B:230:ARG:HH11	2.22	0.52
1:A:357:TYR:HD2	1:A:358:ARG:HH11	1.58	0.52
1:B:62:THR:HG23	1:B:72:THR:HG22	1.90	0.52
1:A:106:GLN:OE1	1:A:106:GLN:CA	2.56	0.52
1:A:180:TYR:CD2	1:A:188:VAL:HG13	2.44	0.52
1:A:61:LEU:HD11	1:A:239:THR:CG2	2.37	0.52
1:B:61:LEU:HD11	1:B:239:THR:CG2	2.40	0.52
1:B:357:TYR:HD2	1:B:358:ARG:HH11	1.58	0.52
1:B:251:ARG:HD3	1:B:385:GLU:O	2.10	0.52
1:A:411:LEU:HD12	1:A:411:LEU:C	2.30	0.52
1:A:110:ALA:O	1:A:113:LYS:HB2	2.09	0.51
1:B:184:ASP:O	1:B:185:ARG:O	2.28	0.51
1:B:437:TYR:CE2	1:B:439:ASN:HA	2.46	0.51
1:A:210:LEU:HB3	1:B:171:ARG:HH12	1.76	0.51

Continued on next page...

Continued from previous page...

Atom-1	Atom-2	Interatomic distance (Å)	Clash overlap (Å)
1:B:131:ALA:HA	4:B:647:HOH:O	2.09	0.51
1:B:106:GLN:OE1	1:B:106:GLN:CA	2.58	0.51
1:B:231:VAL:HG13	1:B:236:GLN:HB3	1.92	0.51
1:A:437:TYR:CE2	1:A:439:ASN:HA	2.46	0.51
1:A:266:ARG:NH2	4:A:697:HOH:O	2.43	0.51
1:B:121:HIS:CE1	4:B:791:HOH:O	2.63	0.51
1:B:134:THR:HG22	1:B:203:TYR:CE1	2.45	0.51
1:A:147:LYS:HG2	4:A:708:HOH:O	2.11	0.51
1:A:189:LEU:HD12	1:A:193:LEU:HG	1.92	0.51
1:B:90:TYR:N	1:B:191:ASP:OD2	2.44	0.51
1:A:227:MET:HE1	4:A:743:HOH:O	2.10	0.50
1:A:376:PRO:HD3	4:A:659:HOH:O	2.11	0.50
1:A:184:ASP:CG	1:A:187:LYS:HG3	2.32	0.50
1:A:197:GLU:HA	1:A:200:GLU:HG3	1.91	0.50
1:A:419:HIS:ND1	1:A:442:ALA:HB2	2.27	0.50
1:B:358:ARG:HD2	4:B:771:HOH:O	2.11	0.50
1:B:55:THR:OG1	3:B:503:AGS:PG	2.70	0.50
1:A:455:ILE:CD1	4:A:695:HOH:O	2.59	0.49
1:B:330:ALA:HA	4:B:766:HOH:O	2.11	0.49
1:A:231:VAL:HG13	1:A:236:GLN:HB3	1.94	0.49
1:B:141:LEU:O	1:B:144:GLN:HB3	2.13	0.49
1:B:88:LYS:HE2	1:B:180:TYR:HD2	1.76	0.49
1:A:163:PRO:HD3	4:A:701:HOH:O	2.12	0.49
1:A:216:TYR:C	1:A:216:TYR:CD1	2.86	0.49
1:A:49:LEU:HB2	1:A:52:ARG:HD3	1.94	0.49
1:B:216:TYR:C	1:B:216:TYR:CD1	2.86	0.49
1:A:404:LEU:HB2	4:A:672:HOH:O	2.12	0.49
1:A:117:ASN:CB	4:A:791:HOH:O	2.60	0.48
1:A:457:ARG:NE	1:A:462:ALA:HB2	2.29	0.48
1:A:193:LEU:HD23	1:A:193:LEU:HA	1.66	0.48
1:B:90:TYR:CD2	1:B:194:LYS:HD3	2.49	0.48
1:A:382:GLU:CG	4:A:671:HOH:O	2.59	0.48
1:A:54:LYS:HE3	1:A:132:THR:HA	1.96	0.47
1:B:82:ARG:HD3	1:B:179:ASP:OD1	2.14	0.47
1:B:48:GLY:HA2	4:B:627:HOH:O	2.12	0.47
1:B:408:SER:O	1:B:412:PRO:HD3	2.14	0.47
1:B:41:PRO:HB2	1:B:119:LEU:HD13	1.96	0.47
1:B:63:ARG:HG3	1:B:63:ARG:HH11	1.77	0.47
1:B:242:TYR:HD1	1:B:379:MET:HE1	1.78	0.47
1:A:184:ASP:CB	1:A:187:LYS:HB2	2.45	0.47
1:B:327:GLU:OE1	1:B:394:ALA:HB3	2.15	0.47

Continued on next page...

Continued from previous page...

Atom-1	Atom-2	Interatomic distance (Å)	Clash overlap (Å)
1:B:55:THR:OG1	3:B:503:AGS:O3G	2.32	0.47
1:A:161:ASN:C	4:A:701:HOH:O	2.53	0.47
1:A:448:GLU:HG3	4:A:635:HOH:O	2.13	0.47
1:A:296:SER:O	1:A:297:SER:C	2.53	0.47
1:A:408:SER:O	1:A:412:PRO:HD3	2.15	0.47
1:A:122:GLU:O	1:A:123:GLU:HB2	2.15	0.46
1:B:173:VAL:HG11	1:B:429:TYR:CZ	2.50	0.46
1:B:457:ARG:NE	1:B:462:ALA:HB2	2.30	0.46
1:A:425:THR:HB	1:A:432:LYS:CG	2.45	0.46
1:A:68:ILE:HG22	1:A:375:GLU:CG	2.45	0.46
1:A:85:VAL:CG1	1:A:86:SER:H	2.18	0.46
1:A:163:PRO:CD	4:A:701:HOH:O	2.63	0.46
1:B:184:ASP:HB3	1:B:185:ARG:H	1.36	0.46
1:B:61:LEU:HD22	1:B:65:LEU:HG	1.96	0.46
1:B:197:GLU:HA	1:B:200:GLU:HG3	1.98	0.46
1:B:49:LEU:HB2	1:B:52:ARG:HD3	1.95	0.46
1:A:90:TYR:C	1:A:90:TYR:CD1	2.88	0.46
1:A:287:ALA:HB2	1:A:315:LEU:HD23	1.98	0.46
1:A:378:ILE:HD12	1:A:402:TYR:CG	2.51	0.46
1:B:103:ILE:N	1:B:103:ILE:CD1	2.79	0.46
1:A:141:LEU:O	1:A:144:GLN:HB3	2.16	0.46
1:B:415:LYS:CE	4:B:699:HOH:O	2.55	0.45
1:B:144:GLN:CD	4:B:702:HOH:O	2.54	0.45
1:B:238:ARG:HD2	4:B:633:HOH:O	2.15	0.45
1:A:213:HIS:HB3	1:B:186:GLU:OE2	2.17	0.45
1:B:116:HIS:O	1:B:120:SER:HB2	2.17	0.45
1:A:327:GLU:OE1	1:A:394:ALA:HB3	2.16	0.45
1:B:230:ARG:HG3	1:B:230:ARG:HH11	1.82	0.45
1:B:361:TYR:HE1	4:B:639:HOH:O	1.99	0.45
1:A:98:MET:CB	4:A:763:HOH:O	2.64	0.45
1:B:92:PHE:CD2	1:B:92:PHE:C	2.89	0.45
1:A:55:THR:OG1	3:A:503:AGS:O3G	2.35	0.45
1:B:207:ASP:O	1:B:211:ASP:HB2	2.16	0.45
1:A:41:PRO:HB2	1:A:119:LEU:HD13	1.98	0.45
1:A:451:GLU:HG3	4:A:657:HOH:O	2.17	0.45
1:B:379:MET:HB2	1:B:379:MET:HE3	1.87	0.45
1:B:88:LYS:HA	1:B:88:LYS:HD3	1.76	0.45
1:A:184:ASP:HB3	1:A:187:LYS:HB2	1.99	0.44
1:A:230:ARG:HG3	1:A:230:ARG:HH11	1.82	0.44
1:A:140:SER:HB3	1:B:163:PRO:HD2	2.00	0.44
1:B:193:LEU:HD23	1:B:193:LEU:HA	1.66	0.44

Continued on next page...

Continued from previous page...

Atom-1	Atom-2	Interatomic distance (Å)	Clash overlap (Å)
1:B:425:THR:HB	1:B:432:LYS:CG	2.47	0.44
1:B:79:GLN:NE2	4:B:796:HOH:O	2.50	0.44
1:B:92:PHE:CD2	1:B:92:PHE:O	2.71	0.44
1:A:56:TYR:CD2	3:A:503:AGS:H8	2.53	0.44
1:B:63:ARG:CZ	1:B:63:ARG:CB	2.96	0.44
1:B:54:LYS:HE3	1:B:132:THR:HA	2.00	0.44
1:B:327:GLU:HB2	1:B:392:HIS:CG	2.53	0.44
1:A:147:LYS:HE2	4:A:708:HOH:O	2.18	0.44
1:B:87:TYR:CD1	1:B:89:ASN:ND2	2.86	0.44
1:A:96:ASP:C	1:A:96:ASP:OD1	2.56	0.43
1:B:221:ASP:OD1	4:B:667:HOH:O	2.21	0.43
1:A:61:LEU:HD22	1:A:65:LEU:HG	1.99	0.43
1:B:287:ALA:HB2	1:B:315:LEU:HD23	2.00	0.43
1:A:263:LEU:HA	1:A:263:LEU:HD23	1.90	0.43
1:A:309:ILE:O	1:A:313:GLU:HG2	2.18	0.43
1:B:103:ILE:H	1:B:103:ILE:CD1	2.32	0.43
1:B:96:ASP:OD1	1:B:96:ASP:C	2.55	0.43
1:A:185:ARG:HB3	1:A:186:GLU:H	1.26	0.43
1:B:90:TYR:CE2	1:B:91:GLU:HG2	2.53	0.43
1:B:232:GLN:HG3	1:B:236:GLN:OE1	2.17	0.43
1:B:287:ALA:CB	1:B:315:LEU:HD23	2.49	0.43
1:A:287:ALA:CB	1:A:315:LEU:HD23	2.49	0.43
1:A:458:GLU:HB3	1:A:459:PRO:HD2	2.01	0.43
1:B:39:ASN:N	4:B:733:HOH:O	2.51	0.43
1:B:90:TYR:C	1:B:90:TYR:CD1	2.92	0.43
1:A:64:TYR:CD2	4:A:622:HOH:O	2.69	0.43
1:B:234:HIS:CD2	4:B:718:HOH:O	2.67	0.43
1:B:296:SER:O	1:B:297:SER:C	2.56	0.43
1:A:116:HIS:O	1:A:120:SER:HB2	2.18	0.43
1:A:63:ARG:CB	1:A:63:ARG:CZ	2.97	0.43
1:B:422:LEU:HD22	1:B:435:SER:HA	2.00	0.43
1:A:232:GLN:HG3	1:A:236:GLN:OE1	2.18	0.43
1:B:290:ILE:HA	1:B:290:ILE:HD13	1.89	0.43
1:B:411:LEU:CD1	1:B:411:LEU:C	2.87	0.43
1:B:309:ILE:O	1:B:313:GLU:HG2	2.19	0.42
1:A:86:SER:OG	1:A:87:TYR:HD1	2.02	0.42
1:B:180:TYR:C	1:B:181:ILE:O	2.57	0.42
1:B:117:ASN:ND2	1:B:122:GLU:OE2	2.45	0.42
1:B:185:ARG:HG2	1:B:186:GLU:N	2.33	0.42
1:A:103:ILE:N	1:A:103:ILE:CD1	2.82	0.42
1:A:409:GLU:HA	4:A:623:HOH:O	2.18	0.42

Continued on next page...

Continued from previous page...

Atom-1	Atom-2	Interatomic distance (Å)	Clash overlap (Å)
1:B:186:GLU:O	1:B:187:LYS:C	2.58	0.42
1:B:239:THR:O	1:B:243:LEU:HG	2.19	0.42
1:B:458:GLU:HB3	1:B:459:PRO:HD2	2.01	0.42
1:A:117:ASN:ND2	1:A:122:GLU:OE2	2.44	0.42
1:A:352:ARG:CZ	4:A:637:HOH:O	2.68	0.42
1:B:264:ASN:HD22	1:B:264:ASN:HA	1.67	0.42
1:B:230:ARG:CG	1:B:230:ARG:NH1	2.82	0.42
1:B:87:TYR:CD2	1:B:87:TYR:C	2.93	0.42
1:A:163:PRO:N	4:A:701:HOH:O	2.53	0.42
1:B:71:PRO:HD2	1:B:125:HIS:CG	2.55	0.42
1:A:411:LEU:CD1	1:A:411:LEU:C	2.89	0.41
1:B:325:LEU:O	1:B:395:VAL:HG21	2.20	0.41
1:A:379:MET:HE3	1:A:379:MET:HB2	1.87	0.41
1:A:87:TYR:CE2	1:A:181:ILE:CG1	2.98	0.41
1:B:263:LEU:HG	1:B:273:SER:HB3	2.02	0.41
1:B:337:THR:HG23	1:B:340:GLU:OE1	2.20	0.41
1:A:268:ARG:HG2	1:A:337:THR:HG22	2.02	0.41
1:B:206:LEU:HA	1:B:206:LEU:HD23	1.91	0.41
1:A:444:ASN:ND2	1:A:467:PRO:HB3	2.36	0.41
1:A:71:PRO:HD2	1:A:125:HIS:CG	2.55	0.41
1:B:444:ASN:ND2	1:B:467:PRO:HB3	2.35	0.41
1:A:366:SER:H	1:A:369:ASP:HB2	1.85	0.41
1:B:101:LEU:O	1:B:105:LYS:HB2	2.20	0.41
1:B:77:LEU:HA	1:B:77:LEU:HD23	1.86	0.41
1:B:81:ARG:O	1:B:84:ALA:HB3	2.20	0.41
1:A:268:ARG:NH1	1:A:340:GLU:OE1	2.53	0.41
1:A:121:HIS:CD2	4:A:791:HOH:O	2.57	0.41
1:A:207:ASP:O	1:A:211:ASP:HB2	2.21	0.41
1:A:325:LEU:O	1:A:395:VAL:HG21	2.20	0.41
1:B:238:ARG:CZ	4:B:713:HOH:O	2.69	0.41
1:B:258:HIS:HD2	1:B:391:CYS:O	2.04	0.41
1:B:85:VAL:HG13	1:B:86:SER:H	1.82	0.41
1:A:55:THR:OG1	3:A:503:AGS:PG	2.79	0.41
1:B:358:ARG:HH11	1:B:358:ARG:HG3	1.86	0.41
1:B:379:MET:CE	1:B:379:MET:HA	2.51	0.41
1:B:63:ARG:NE	1:B:405:ASP:HB2	2.33	0.41
1:B:282:TYR:CD1	1:B:419:HIS:HA	2.56	0.41
1:A:337:THR:HG23	1:A:340:GLU:OE1	2.21	0.40
1:B:76:ASN:HB3	4:B:796:HOH:O	2.21	0.40
1:A:264:ASN:HA	4:A:652:HOH:O	2.20	0.40
1:A:289:PHE:CZ	1:A:436:ILE:HD13	2.57	0.40

Continued on next page...

Continued from previous page...

Atom-1	Atom-2	Interatomic distance (Å)	Clash overlap (Å)
1:A:62:THR:OG1	1:A:74:VAL:HG23	2.22	0.40
1:B:268:ARG:HG2	1:B:337:THR:HG22	2.03	0.40
1:A:103:ILE:H	1:A:103:ILE:CD1	2.35	0.40
1:A:98:MET:CG	4:A:763:HOH:O	2.70	0.40
1:B:103:ILE:HD12	1:B:103:ILE:N	2.37	0.40
1:A:327:GLU:HB2	1:A:392:HIS:CG	2.56	0.40
1:B:183:CYS:SG	1:B:188:VAL:CG2	3.09	0.40
1:B:378:ILE:HD12	1:B:402:TYR:CG	2.57	0.40
1:B:352:ARG:NH2	2:B:502:PO4:O1	2.54	0.40

All (1) symmetry-related close contacts are listed below. The label for Atom-2 includes the symmetry operator and encoded unit-cell translations to be applied.

Atom-1	Atom-2	Interatomic distance (Å)	Clash overlap (Å)
4:A:730:HOH:O	4:B:691:HOH:O[4_456]	1.88	0.32

5.3 Torsion angles

5.3.1 Protein backbone

In the following table, the Percentiles column shows the percent Ramachandran outliers of the chain as a percentile score with respect to all X-ray entries followed by that with respect to entries of similar resolution.

The Analysed column shows the number of residues for which the backbone conformation was analysed, and the total number of residues.

Mol	Chain	Analysed	Favoured	Allowed	Outliers	Percentiles	
1	A	430/432 (100%)	396 (92%)	26 (6%)	8 (2%)	9	11
1	B	430/432 (100%)	395 (92%)	28 (6%)	7 (2%)	11	15
All	All	860/864 (100%)	791 (92%)	54 (6%)	15 (2%)	11	13

All (15) Ramachandran outliers are listed below:

Mol	Chain	Res	Type
1	A	85	VAL
1	B	88	LYS
1	B	185	ARG
1	A	88	LYS

Continued on next page...

Continued from previous page...

Mol	Chain	Res	Type
1	A	182	ASP
1	A	297	SER
1	A	429	TYR
1	B	89	ASN
1	B	181	ILE
1	B	297	SER
1	B	429	TYR
1	A	181	ILE
1	A	86	SER
1	B	91	GLU
1	A	71	PRO

5.3.2 Protein sidechains ⓘ

In the following table, the Percentiles column shows the percent sidechain outliers of the chain as a percentile score with respect to all X-ray entries followed by that with respect to entries of similar resolution.

The Analysed column shows the number of residues for which the sidechain conformation was analysed, and the total number of residues.

Mol	Chain	Analysed	Rotameric	Outliers	Percentiles	
1	A	388/388 (100%)	346 (89%)	42 (11%)	7	10
1	B	388/388 (100%)	341 (88%)	47 (12%)	6	7
All	All	776/776 (100%)	687 (88%)	89 (12%)	6	9

All (89) residues with a non-rotameric sidechain are listed below:

Mol	Chain	Res	Type
1	A	40	SER
1	A	58	SER
1	A	61	LEU
1	A	63	ARG
1	A	98	MET
1	A	103	ILE
1	A	105	LYS
1	A	106	GLN
1	A	117	ASN
1	A	134	THR
1	A	141	LEU
1	A	144	GLN

Continued on next page...

Continued from previous page...

Mol	Chain	Res	Type
1	A	165	ILE
1	A	170	ILE
1	A	171	ARG
1	A	173	VAL
1	A	184	ASP
1	A	185	ARG
1	A	186	GLU
1	A	189	LEU
1	A	190	GLU
1	A	209	GLU
1	A	212	SER
1	A	222	VAL
1	A	230	ARG
1	A	235	ILE
1	A	237	SER
1	A	238	ARG
1	A	251	ARG
1	A	264	ASN
1	A	265	ILE
1	A	277	VAL
1	A	292	SER
1	A	323	LYS
1	A	379	MET
1	A	411	LEU
1	A	422	LEU
1	A	429	TYR
1	A	432	LYS
1	A	451	GLU
1	A	455	ILE
1	A	460	GLU
1	B	58	SER
1	B	61	LEU
1	B	63	ARG
1	B	85	VAL
1	B	88	LYS
1	B	89	ASN
1	B	90	TYR
1	B	98	MET
1	B	102	GLN
1	B	103	ILE
1	B	105	LYS
1	B	106	GLN

Continued on next page...

Continued from previous page...

Mol	Chain	Res	Type
1	B	117	ASN
1	B	134	THR
1	B	141	LEU
1	B	144	GLN
1	B	165	ILE
1	B	170	ILE
1	B	171	ARG
1	B	173	VAL
1	B	181	ILE
1	B	183	CYS
1	B	185	ARG
1	B	186	GLU
1	B	189	LEU
1	B	190	GLU
1	B	209	GLU
1	B	212	SER
1	B	222	VAL
1	B	230	ARG
1	B	235	ILE
1	B	237	SER
1	B	238	ARG
1	B	251	ARG
1	B	264	ASN
1	B	265	ILE
1	B	277	VAL
1	B	292	SER
1	B	323	LYS
1	B	379	MET
1	B	411	LEU
1	B	422	LEU
1	B	429	TYR
1	B	432	LYS
1	B	451	GLU
1	B	455	ILE
1	B	460	GLU

Some sidechains can be flipped to improve hydrogen bonding and reduce clashes. All (9) such sidechains are listed below:

Mol	Chain	Res	Type
1	A	89	ASN
1	A	116	HIS
1	A	169	ASN

Continued on next page...

Continued from previous page...

Mol	Chain	Res	Type
1	A	354	GLN
1	B	89	ASN
1	B	116	HIS
1	B	144	GLN
1	B	169	ASN
1	B	354	GLN

5.3.3 RNA ⓘ

There are no RNA molecules in this entry.

5.4 Non-standard residues in protein, DNA, RNA chains ⓘ

There are no non-standard protein/DNA/RNA residues in this entry.

5.5 Carbohydrates ⓘ

There are no carbohydrates in this entry.

5.6 Ligand geometry ⓘ

6 ligands are modelled in this entry.

In the following table, the Counts columns list the number of bonds (or angles) for which Mogul statistics could be retrieved, the number of bonds (or angles) that are observed in the model and the number of bonds (or angles) that are defined in the chemical component dictionary. The Link column lists molecule types, if any, to which the group is linked. The Z score for a bond length (or angle) is the number of standard deviations the observed value is removed from the expected value. A bond length (or angle) with $|Z| > 2$ is considered an outlier worth inspection. RMSZ is the root-mean-square of all Z scores of the bond lengths (or angles).

Mol	Type	Chain	Res	Link	Bond lengths			Bond angles		
					Counts	RMSZ	$\# Z > 2$	Counts	RMSZ	$\# Z > 2$
2	PO4	A	501	-	4,4,4	1.09	0	6,6,6	0.73	0
2	PO4	A	502	-	4,4,4	1.94	2 (50%)	6,6,6	0.63	0
3	AGS	A	503	-	26,33,33	2.17	8 (30%)	22,52,52	1.50	3 (13%)
2	PO4	B	501	-	4,4,4	1.05	0	6,6,6	0.35	0
2	PO4	B	502	-	4,4,4	1.87	1 (25%)	6,6,6	0.59	0
3	AGS	B	503	-	26,33,33	1.94	9 (34%)	22,52,52	2.17	6 (27%)

In the following table, the Chirals column lists the number of chiral outliers, the number of chiral centers analysed, the number of these observed in the model and the number defined in the chemical component dictionary. Similar counts are reported in the Torsion and Rings columns. '-' means no outliers of that kind were identified.

Mol	Type	Chain	Res	Link	Chirals	Torsions	Rings
2	PO4	A	501	-	-	0/0/0/0	0/0/0/0
2	PO4	A	502	-	-	0/0/0/0	0/0/0/0
3	AGS	A	503	-	-	0/17/38/38	0/3/3/3
2	PO4	B	501	-	-	0/0/0/0	0/0/0/0
2	PO4	B	502	-	-	0/0/0/0	0/0/0/0
3	AGS	B	503	-	-	0/17/38/38	0/3/3/3

All (20) bond length outliers are listed below:

Mol	Chain	Res	Type	Atoms	Z	Observed(Å)	Ideal(Å)
3	A	503	AGS	PG-S1G	-7.01	1.77	1.90
3	A	503	AGS	O4'-C1'	-3.83	1.36	1.41
3	B	503	AGS	O4'-C1'	-3.70	1.36	1.41
3	B	503	AGS	PG-S1G	-3.60	1.83	1.90
3	A	503	AGS	O4'-C4'	-3.41	1.37	1.45
3	B	503	AGS	O5'-C5'	-2.81	1.33	1.44
2	A	502	PO4	P-O3	-2.54	1.45	1.54
3	A	503	AGS	C2'-C1'	-2.51	1.49	1.53
3	B	503	AGS	PA-O5'	-2.27	1.49	1.59
3	B	503	AGS	O4'-C4'	-2.06	1.40	1.45
3	A	503	AGS	O5'-C5'	-2.04	1.36	1.44
2	A	502	PO4	P-O4	2.03	1.61	1.54
3	A	503	AGS	C5-C4	2.16	1.45	1.40
3	A	503	AGS	C2-N3	2.22	1.35	1.32
3	B	503	AGS	O3'-C3'	2.30	1.48	1.43
3	B	503	AGS	C4-N3	2.51	1.39	1.35
2	B	502	PO4	P-O1	3.32	1.57	1.50
3	B	503	AGS	C6-N6	3.54	1.48	1.34
3	A	503	AGS	C6-N6	3.63	1.49	1.34
3	B	503	AGS	C2-N3	3.72	1.38	1.32

All (9) bond angle outliers are listed below:

Mol	Chain	Res	Type	Atoms	Z	Observed(°)	Ideal(°)
3	A	503	AGS	N3-C2-N1	-3.28	126.00	128.86
3	B	503	AGS	O4'-C4'-C3'	-3.23	98.74	105.17
3	A	503	AGS	O2'-C2'-C1'	-2.92	102.49	111.61
3	B	503	AGS	O2'-C2'-C1'	-2.62	103.42	111.61

Continued on next page...

Continued from previous page...

Mol	Chain	Res	Type	Atoms	Z	Observed(°)	Ideal(°)
3	B	503	AGS	O3'-C3'-C4'	-2.46	103.89	111.09
3	A	503	AGS	O3'-C3'-C2'	-2.40	104.16	111.83
3	B	503	AGS	PB-O3B-PG	-2.07	125.66	132.35
3	B	503	AGS	N3-C2-N1	-2.02	127.09	128.86
3	B	503	AGS	C4'-O4'-C1'	7.60	117.86	109.77

There are no chirality outliers.

There are no torsion outliers.

There are no ring outliers.

3 monomers are involved in 8 short contacts:

Mol	Chain	Res	Type	Clashes	Symm-Clashes
3	A	503	AGS	4	0
2	B	502	PO4	1	0
3	B	503	AGS	3	0

5.7 Other polymers [i](#)

There are no such residues in this entry.

5.8 Polymer linkage issues [i](#)

There are no chain breaks in this entry.

6 Fit of model and data

6.1 Protein, DNA and RNA chains

In the following table, the column labelled ‘#RSRZ> 2’ contains the number (and percentage) of RSRZ outliers, followed by percent RSRZ outliers for the chain as percentile scores relative to all X-ray entries and entries of similar resolution. The OWAB column contains the minimum, median, 95th percentile and maximum values of the occupancy-weighted average B-factor per residue. The column labelled ‘Q< 0.9’ lists the number of (and percentage) of residues with an average occupancy less than 0.9.

Mol	Chain	Analysed	<RSRZ>	#RSRZ>2	OWAB(Å ²)	Q<0.9
1	A	432/432 (100%)	-0.17	15 (3%) 44 43	22, 38, 76, 95	0
1	B	432/432 (100%)	-0.20	13 (3%) 51 49	21, 37, 75, 95	0
All	All	864/864 (100%)	-0.18	28 (3%) 48 46	21, 37, 76, 95	0

All (28) RSRZ outliers are listed below:

Mol	Chain	Res	Type	RSRZ
1	A	181	ILE	6.0
1	B	98	MET	5.8
1	B	181	ILE	5.0
1	B	470	TYR	3.7
1	A	88	LYS	3.5
1	A	92	PHE	3.5
1	A	470	TYR	3.4
1	A	182	ASP	3.3
1	A	178	PRO	3.2
1	B	185	ARG	3.1
1	A	87	TYR	2.7
1	B	94	LEU	2.7
1	A	183	CYS	2.7
1	A	185	ARG	2.7
1	A	94	LEU	2.7
1	A	455	ILE	2.7
1	A	187	LYS	2.5
1	B	106	GLN	2.4
1	A	194	LYS	2.4
1	B	186	GLU	2.3
1	B	88	LYS	2.3
1	A	103	ILE	2.3
1	B	187	LYS	2.2
1	B	175	LEU	2.1

Continued on next page...

Continued from previous page...

Mol	Chain	Res	Type	RSRZ
1	B	184	ASP	2.1
1	B	177	SER	2.1
1	B	132	THR	2.1
1	A	132	THR	2.0

6.2 Non-standard residues in protein, DNA, RNA chains [i](#)

There are no non-standard protein/DNA/RNA residues in this entry.

6.3 Carbohydrates [i](#)

There are no carbohydrates in this entry.

6.4 Ligands [i](#)

In the following table, the Atoms column lists the number of modelled atoms in the group and the number defined in the chemical component dictionary. LLDF column lists the quality of electron density of the group with respect to its neighbouring residues in protein, DNA or RNA chains. The B-factors column lists the minimum, median, 95th percentile and maximum values of B factors of atoms in the group. The column labelled 'Q< 0.9' lists the number of atoms with occupancy less than 0.9.

Mol	Type	Chain	Res	Atoms	RSCC	RSR	LLDF	B-factors(Å ²)	Q<0.9
2	PO4	A	502	5/5	0.98	0.17	1.99	22,22,26,26	0
2	PO4	B	501	5/5	0.98	0.23	1.99	28,29,30,33	0
2	PO4	B	502	5/5	0.99	0.20	1.76	23,26,29,32	0
2	PO4	A	501	5/5	0.99	0.17	0.54	30,32,32,32	0
3	AGS	A	503	31/31	0.90	0.18	0.06	20,55,61,64	0
3	AGS	B	503	31/31	0.94	0.14	-0.36	20,40,57,60	0

6.5 Other polymers [i](#)

There are no such residues in this entry.