



wwPDB X-ray Structure Validation Summary Report ⓘ

Feb 15, 2017 – 03:05 am GMT

PDB ID : 5K8F
Title : Crystal structure of Acetyl-CoA Synthetase in complex with ATP and Acetyl-AMP from *Cryptococcus neoformans* H99
Authors : Seattle Structural Genomics Center for Infectious Disease (SSGCID); Fox III, D.; Delker, S.L.; Potts, K.T.; Lorimer, D.D.; Edwards, T.E.; Mutz, M.W.; SSGCID
Deposited on : 2016-05-30
Resolution : 2.45 Å(reported)

This is a wwPDB X-ray Structure Validation Summary Report for a publicly released PDB entry.

We welcome your comments at validation@mail.wwpdb.org

A user guide is available at

<http://wwpdb.org/validation/2016/XrayValidationReportHelp>

with specific help available everywhere you see the ⓘ symbol.

The following versions of software and data (see [references ⓘ](#)) were used in the production of this report:

MolProbity	:	4.02b-467
Mogul	:	1.7.2 (RC1), CSD as538be (2017)
Xtriage (Phenix)	:	1.9-1692
EDS	:	trunk28620
Percentile statistics	:	20161228.v01 (using entries in the PDB archive December 28th 2016)
Refmac	:	5.8.0135
CCP4	:	6.5.0
Ideal geometry (proteins)	:	Engh & Huber (2001)
Ideal geometry (DNA, RNA)	:	Parkinson et al. (1996)
Validation Pipeline (wwPDB-VP)	:	recalc28949

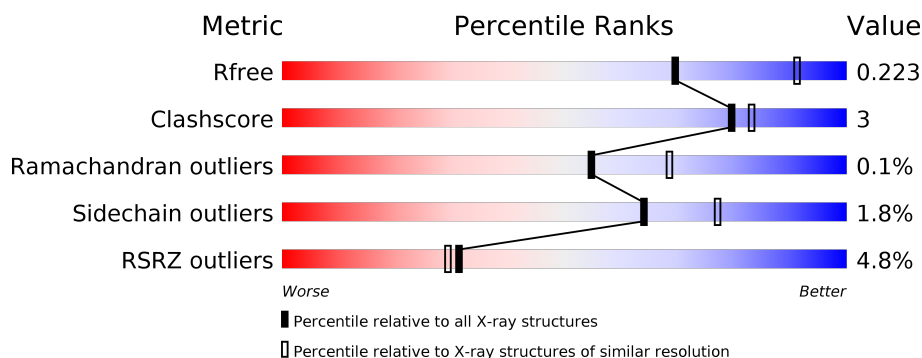
1 Overall quality at a glance ⓘ

The following experimental techniques were used to determine the structure:

X-RAY DIFFRACTION

The reported resolution of this entry is 2.45 Å.

Percentile scores (ranging between 0-100) for global validation metrics of the entry are shown in the following graphic. The table shows the number of entries on which the scores are based.



Metric	Whole archive (#Entries)	Similar resolution (#Entries, resolution range(Å))
R_{free}	100719	1119 (2.48-2.44)
Clashscore	112137	1193 (2.48-2.44)
Ramachandran outliers	110173	1185 (2.48-2.44)
Sidechain outliers	110143	1185 (2.48-2.44)
RSRZ outliers	101464	1126 (2.48-2.44)

The table below summarises the geometric issues observed across the polymeric chains and their fit to the electron density. The red, orange, yellow and green segments on the lower bar indicate the fraction of residues that contain outliers for ≥ 3 , 2, 1 and 0 types of geometric quality criteria. A grey segment represents the fraction of residues that are not modelled. The numeric value for each fraction is indicated below the corresponding segment, with a dot representing fractions $\leq 5\%$. The upper red bar (where present) indicates the fraction of residues that have poor fit to the electron density. The numeric value is given above the bar.

Mol	Chain	Length	Quality of chain
1	A	694	<div> <div>3%</div> <div>87%</div> <div>7%</div> <div>5%</div> </div>
1	B	694	<div> <div>7%</div> <div>84%</div> <div>10%</div> <div>6%</div> </div>
1	C	694	<div> <div>3%</div> <div>85%</div> <div>8%</div> <div>6%</div> </div>

The following table lists non-polymeric compounds, carbohydrate monomers and non-standard residues in protein, DNA, RNA chains that are outliers for geometric or electron-density-fit criteria:

Mol	Type	Chain	Res	Chirality	Geometry	Clashes	Electron density
5	EDO	A	705	-	-	-	X
5	EDO	A	706	-	-	-	X
5	EDO	B	705	-	-	-	X
5	EDO	B	706	-	-	-	X

2 Entry composition

There are 7 unique types of molecules in this entry. The entry contains 15669 atoms, of which 0 are hydrogens and 0 are deuteriums.

In the tables below, the ZeroOcc column contains the number of atoms modelled with zero occupancy, the AltConf column contains the number of residues with at least one atom in alternate conformation and the Trace column contains the number of residues modelled with at most 2 atoms.

- Molecule 1 is a protein called Acetyl-coenzyme A synthetase.

Mol	Chain	Residues	Atoms					ZeroOcc	AltConf	Trace
1	A	656	Total	C	N	O	S	0	15	0
			5109	3250	875	957	27			
1	B	655	Total	C	N	O	S	0	5	0
			4978	3180	854	918	26			
1	C	651	Total	C	N	O	S	0	7	0
			4988	3193	851	917	27			

There are 45 discrepancies between the modelled and reference sequences:

Chain	Residue	Modelled	Actual	Comment	Reference
A	-13	MET	-	initiating methionine	UNP J9VFT1
A	-12	HIS	-	expression tag	UNP J9VFT1
A	-11	HIS	-	expression tag	UNP J9VFT1
A	-10	HIS	-	expression tag	UNP J9VFT1
A	-9	HIS	-	expression tag	UNP J9VFT1
A	-8	HIS	-	expression tag	UNP J9VFT1
A	-7	HIS	-	expression tag	UNP J9VFT1
A	-6	HIS	-	expression tag	UNP J9VFT1
A	-5	HIS	-	expression tag	UNP J9VFT1
A	-4	GLU	-	expression tag	UNP J9VFT1
A	-3	ASN	-	expression tag	UNP J9VFT1
A	-2	LEU	-	expression tag	UNP J9VFT1
A	-1	TYR	-	expression tag	UNP J9VFT1
A	0	PHE	-	expression tag	UNP J9VFT1
A	1	GLN	-	expression tag	UNP J9VFT1
B	-13	MET	-	initiating methionine	UNP J9VFT1
B	-12	HIS	-	expression tag	UNP J9VFT1
B	-11	HIS	-	expression tag	UNP J9VFT1
B	-10	HIS	-	expression tag	UNP J9VFT1
B	-9	HIS	-	expression tag	UNP J9VFT1
B	-8	HIS	-	expression tag	UNP J9VFT1
B	-7	HIS	-	expression tag	UNP J9VFT1
B	-6	HIS	-	expression tag	UNP J9VFT1

Continued on next page...

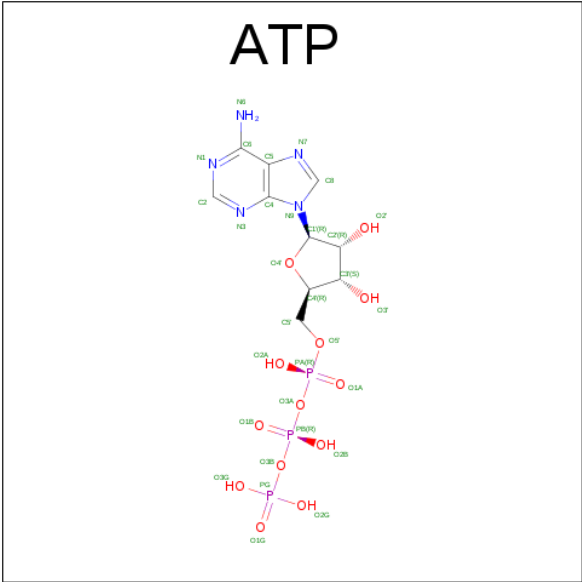
Continued from previous page...

Chain	Residue	Modelled	Actual	Comment	Reference
B	-5	HIS	-	expression tag	UNP J9VFT1
B	-4	GLU	-	expression tag	UNP J9VFT1
B	-3	ASN	-	expression tag	UNP J9VFT1
B	-2	LEU	-	expression tag	UNP J9VFT1
B	-1	TYR	-	expression tag	UNP J9VFT1
B	0	PHE	-	expression tag	UNP J9VFT1
B	1	GLN	-	expression tag	UNP J9VFT1
C	-13	MET	-	initiating methionine	UNP J9VFT1
C	-12	HIS	-	expression tag	UNP J9VFT1
C	-11	HIS	-	expression tag	UNP J9VFT1
C	-10	HIS	-	expression tag	UNP J9VFT1
C	-9	HIS	-	expression tag	UNP J9VFT1
C	-8	HIS	-	expression tag	UNP J9VFT1
C	-7	HIS	-	expression tag	UNP J9VFT1
C	-6	HIS	-	expression tag	UNP J9VFT1
C	-5	HIS	-	expression tag	UNP J9VFT1
C	-4	GLU	-	expression tag	UNP J9VFT1
C	-3	ASN	-	expression tag	UNP J9VFT1
C	-2	LEU	-	expression tag	UNP J9VFT1
C	-1	TYR	-	expression tag	UNP J9VFT1
C	0	PHE	-	expression tag	UNP J9VFT1
C	1	GLN	-	expression tag	UNP J9VFT1

- Molecule 2 is MAGNESIUM ION (three-letter code: MG) (formula: Mg).

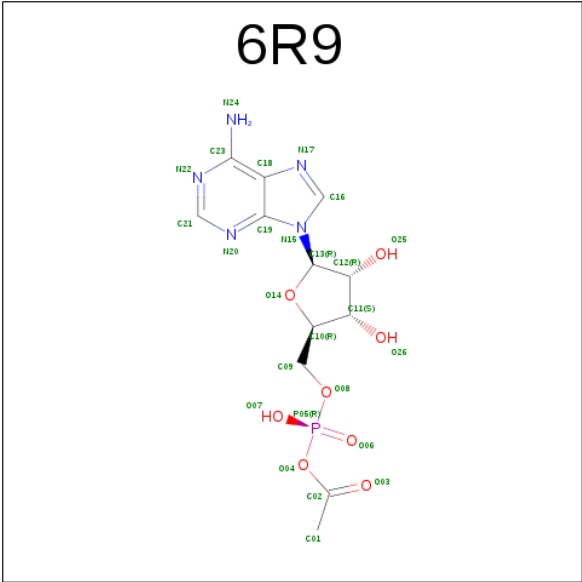
Mol	Chain	Residues	Atoms	ZeroOcc	AltConf
2	B	2	Total Mg 2 2	0	2
2	A	2	Total Mg 2 2	0	2
2	C	3	Total Mg 3 3	0	2

- Molecule 3 is ADENOSINE-5'-TRIPHOSPHATE (three-letter code: ATP) (formula: C₁₀H₁₆N₅O₁₃P₃).



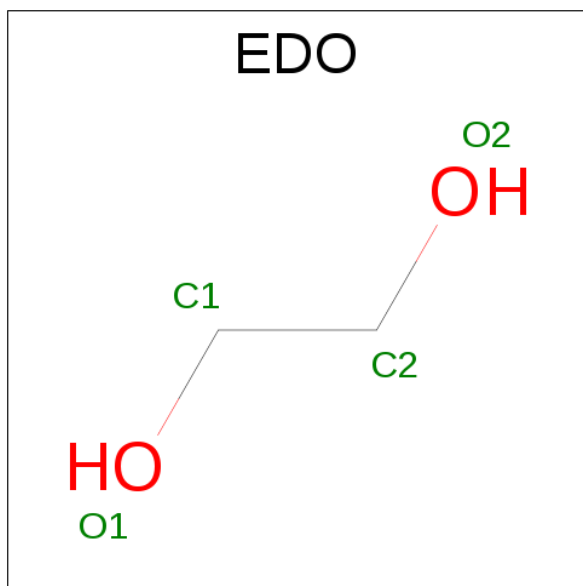
Mol	Chain	Residues	Atoms					ZeroOcc	AltConf
3	A	1	Total	C	N	O	P	0	1
			31	10	5	13	3		
3	B	1	Total	C	N	O	P	0	1
			31	10	5	13	3		
3	C	1	Total	C	N	O	P	0	1
			31	10	5	13	3		

- Molecule 4 is [[(2 {R},3 {S},4 {R},5 {R})-5-(6-aminopurin-9-yl)-3,4-bis(oxidanyl)oxolan-2-yl [methoxy-oxidanyl-phosphoryl] ethanoate (three-letter code: 6R9) (formula: C₁₂H₁₆N₅O₈P).



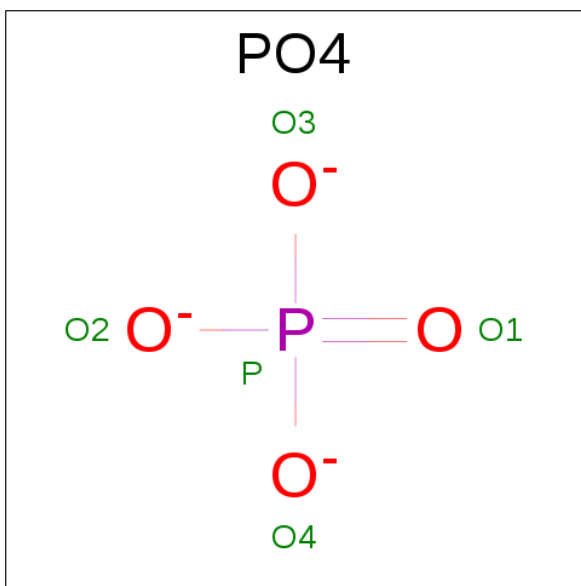
Mol	Chain	Residues	Atoms					ZeroOcc	AltConf
4	A	1	Total	C	N	O	P	0	1
			26	12	5	8	1		
4	B	1	Total	C	N	O	P	0	1
			26	12	5	8	1		
4	C	1	Total	C	N	O	P	0	1
			26	12	5	8	1		

- Molecule 5 is 1,2-ETHANEDIOL (three-letter code: EDO) (formula: C₂H₆O₂).



Mol	Chain	Residues	Atoms			ZeroOcc	AltConf
5	A	1	Total	C	O	0	0
			4	2	2		
5	A	1	Total	C	O	0	0
			4	2	2		
5	A	1	Total	C	O	0	0
			4	2	2		
5	A	1	Total	C	O	0	0
			4	2	2		
5	B	1	Total	C	O	0	0
			4	2	2		
5	B	1	Total	C	O	0	0
			4	2	2		
5	B	1	Total	C	O	0	0
			4	2	2		
5	C	1	Total	C	O	0	0
			4	2	2		
5	C	1	Total	C	O	0	0
			4	2	2		

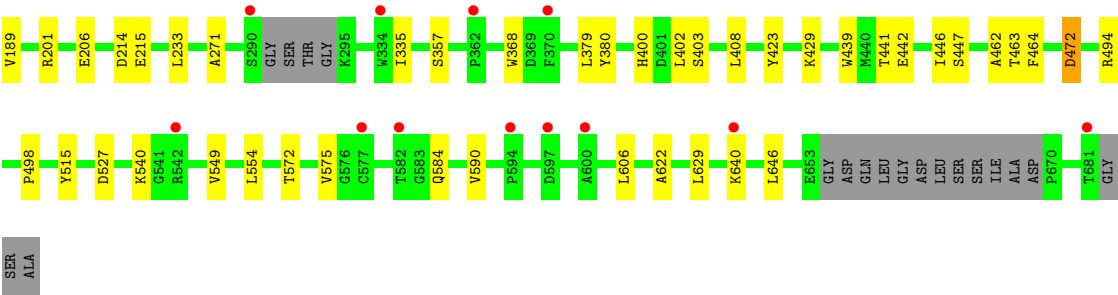
- Molecule 6 is PHOSPHATE ION (three-letter code: PO4) (formula: O₄P).



Mol	Chain	Residues	Atoms			ZeroOcc	AltConf
6	C	1	Total	O	P	0	0
			5	4	1		

- Molecule 7 is water.

Mol	Chain	Residues	Atoms		ZeroOcc	AltConf
7	A	186	Total	O	0	3
			188	188		
7	B	84	Total	O	0	2
			86	86		
7	C	99	Total	O	0	2
			101	101		



4 Data and refinement statistics

Property	Value	Source
Space group	P 1	Depositor
Cell constants a, b, c, α , β , γ	71.37Å 83.92Å 101.57Å 110.06° 105.24° 87.65°	Depositor
Resolution (Å)	26.62 – 2.45 47.48 – 2.45	Depositor EDS
% Data completeness (in resolution range)	98.6 (26.62-2.45) 87.8 (47.48-2.45)	Depositor EDS
R_{merge}	0.08	Depositor
R_{sym}	(Not available)	Depositor
$\langle I/\sigma(I) \rangle$ ¹	2.71 (at 2.45Å)	Xtriage
Refinement program	PHENIX (DEV_2415: ???)	Depositor
R, R_{free}	0.178 , 0.223 0.177 , 0.223	Depositor DCC
R_{free} test set	1999 reflections (2.59%)	DCC
Wilson B-factor (Å ²)	37.6	Xtriage
Anisotropy	0.240	Xtriage
Bulk solvent k_{sol} (e/Å ³), B_{sol} (Å ²)	0.32 , 57.7	EDS
L-test for twinning ²	$\langle L \rangle = 0.48$, $\langle L^2 \rangle = 0.31$	Xtriage
Estimated twinning fraction	No twinning to report.	Xtriage
F_o, F_c correlation	0.95	EDS
Total number of atoms	15669	wwPDB-VP
Average B, all atoms (Å ²)	53.0	wwPDB-VP

Xtriage's analysis on translational NCS is as follows: *The largest off-origin peak in the Patterson function is 3.75% of the height of the origin peak. No significant pseudotranslation is detected.*

¹Intensities estimated from amplitudes.

²Theoretical values of $\langle |L| \rangle$, $\langle L^2 \rangle$ for acentric reflections are 0.5, 0.333 respectively for untwinned datasets, and 0.375, 0.2 for perfectly twinned datasets.

5 Model quality [i](#)

5.1 Standard geometry [i](#)

Bond lengths and bond angles in the following residue types are not validated in this section: MG, 6R9, PO4, ATP, EDO

The Z score for a bond length (or angle) is the number of standard deviations the observed value is removed from the expected value. A bond length (or angle) with $|Z| > 5$ is considered an outlier worth inspection. RMSZ is the root-mean-square of all Z scores of the bond lengths (or angles).

Mol	Chain	Bond lengths		Bond angles	
		RMSZ	# Z >5	RMSZ	# Z >5
1	A	0.25	0/5258	0.46	0/7177
1	B	0.25	0/5128	0.44	0/7011
1	C	0.25	0/5144	0.44	0/7029
All	All	0.25	0/15530	0.45	0/21217

Chiral center outliers are detected by calculating the chiral volume of a chiral center and verifying if the center is modelled as a planar moiety or with the opposite hand. A planarity outlier is detected by checking planarity of atoms in a peptide group, atoms in a mainchain group or atoms of a sidechain that are expected to be planar.

Mol	Chain	#Chirality outliers	#Planarity outliers
1	A	0	1

There are no bond length outliers.

There are no bond angle outliers.

There are no chirality outliers.

All (1) planarity outliers are listed below:

Mol	Chain	Res	Type	Group
1	A	292[A]	SER	Peptide

5.2 Too-close contacts [i](#)

In the following table, the Non-H and H(model) columns list the number of non-hydrogen atoms and hydrogen atoms in the chain respectively. The H(added) column lists the number of hydrogen atoms added and optimized by MolProbity. The Clashes column lists the number of clashes within the asymmetric unit, whereas Symm-Clashes lists symmetry related clashes.

Mol	Chain	Non-H	H(model)	H(added)	Clashes	Symm-Clashes
1	A	5109	0	4822	28	0
1	B	4978	0	4636	36	0
1	C	4988	0	4687	32	0
2	A	2	0	0	0	0
2	B	2	0	0	0	0
2	C	3	0	0	0	0
3	A	31	0	12	0	0
3	B	31	0	12	1	0
3	C	31	0	12	1	0
4	A	26	0	0	0	0
4	B	26	0	0	0	0
4	C	26	0	0	1	0
5	A	16	0	24	0	0
5	B	12	0	18	2	0
5	C	8	0	12	3	0
6	C	5	0	0	0	0
7	A	188	0	0	1	0
7	B	86	0	0	0	0
7	C	101	0	0	0	0
All	All	15669	0	14235	93	0

The all-atom clashscore is defined as the number of clashes found per 1000 atoms (including hydrogen atoms). The all-atom clashscore for this structure is 3.

The worst 5 of 93 close contacts within the same asymmetric unit are listed below, sorted by their clash magnitude.

Atom-1	Atom-2	Interatomic distance (Å)	Clash overlap (Å)
1:C:554:LEU:HD11	1:C:622:ALA:HA	1.80	0.63
1:B:472:ASP:OD2	1:B:494:ARG:NH2	2.32	0.62
1:B:513:GLU:HA	1:B:517:LYS:HG3	1.80	0.62
1:C:540:LYS:HG2	5:C:708:EDO:H21	1.83	0.59
1:C:606:LEU:HD23	1:C:629:LEU:HD21	1.86	0.57

There are no symmetry-related clashes.

5.3 Torsion angles

5.3.1 Protein backbone

In the following table, the Percentiles column shows the percent Ramachandran outliers of the chain as a percentile score with respect to all X-ray entries followed by that with respect to entries of similar resolution.

The Analysed column shows the number of residues for which the backbone conformation was analysed, and the total number of residues.

Mol	Chain	Analysed	Favoured	Allowed	Outliers	Percentiles	
1	A	667/694 (96%)	643 (96%)	23 (3%)	1 (0%)	55	68
1	B	655/694 (94%)	634 (97%)	21 (3%)	0	100	100
1	C	652/694 (94%)	633 (97%)	19 (3%)	0	100	100
All	All	1974/2082 (95%)	1910 (97%)	63 (3%)	1 (0%)	55	68

All (1) Ramachandran outliers are listed below:

Mol	Chain	Res	Type
1	A	463	THR

5.3.2 Protein sidechains ⓘ

In the following table, the Percentiles column shows the percent sidechain outliers of the chain as a percentile score with respect to all X-ray entries followed by that with respect to entries of similar resolution.

The Analysed column shows the number of residues for which the sidechain conformation was analysed, and the total number of residues.

Mol	Chain	Analysed	Rotameric	Outliers	Percentiles	
1	A	515/576 (89%)	504 (98%)	11 (2%)	59	73
1	B	485/576 (84%)	474 (98%)	11 (2%)	56	70
1	C	494/576 (86%)	486 (98%)	8 (2%)	68	79
All	All	1494/1728 (86%)	1464 (98%)	30 (2%)	64	74

5 of 30 residues with a non-rotameric sidechain are listed below:

Mol	Chain	Res	Type
1	B	116	ASN
1	B	297	LYS
1	C	472	ASP
1	B	262	TRP
1	B	423	TYR

Some sidechains can be flipped to improve hydrogen bonding and reduce clashes. There are no such sidechains identified.

5.3.3 RNA ⓘ

There are no RNA molecules in this entry.

5.4 Non-standard residues in protein, DNA, RNA chains ⓘ

There are no non-standard protein/DNA/RNA residues in this entry.

5.5 Carbohydrates ⓘ

There are no carbohydrates in this entry.

5.6 Ligand geometry ⓘ

Of 23 ligands modelled in this entry, 7 are monoatomic - leaving 16 for Mogul analysis.

In the following table, the Counts columns list the number of bonds (or angles) for which Mogul statistics could be retrieved, the number of bonds (or angles) that are observed in the model and the number of bonds (or angles) that are defined in the chemical component dictionary. The Link column lists molecule types, if any, to which the group is linked. The Z score for a bond length (or angle) is the number of standard deviations the observed value is removed from the expected value. A bond length (or angle) with $|Z| > 2$ is considered an outlier worth inspection. RMSZ is the root-mean-square of all Z scores of the bond lengths (or angles).

Mol	Type	Chain	Res	Link	Bond lengths			Bond angles		
					Counts	RMSZ	$\# Z > 2$	Counts	RMSZ	$\# Z > 2$
3	ATP	A	703[B]	2	27,33,33	0.96	1 (3%)	25,52,52	1.59	2 (8%)
4	6R9	A	704[A]	-	24,28,28	4.30	5 (20%)	24,42,42	1.92	3 (12%)
5	EDO	A	705	-	3,3,3	0.45	0	2,2,2	0.36	0
5	EDO	A	706	-	3,3,3	0.45	0	2,2,2	0.37	0
5	EDO	A	707	-	3,3,3	0.44	0	2,2,2	0.38	0
5	EDO	A	708	-	3,3,3	0.50	0	2,2,2	0.22	0
3	ATP	B	703[A]	-	27,33,33	0.95	1 (3%)	25,52,52	1.61	2 (8%)
4	6R9	B	704[B]	2	24,28,28	4.27	5 (20%)	24,42,42	2.02	4 (16%)
5	EDO	B	705	-	3,3,3	0.43	0	2,2,2	0.46	0
5	EDO	B	706	-	3,3,3	0.45	0	2,2,2	0.40	0
5	EDO	B	707	-	3,3,3	0.45	0	2,2,2	0.40	0
3	ATP	C	703[B]	2	27,33,33	0.96	1 (3%)	25,52,52	1.60	2 (8%)
4	6R9	C	704[A]	-	24,28,28	4.29	5 (20%)	24,42,42	1.93	4 (16%)
6	PO4	C	706	-	4,4,4	0.75	0	6,6,6	0.39	0
5	EDO	C	707	-	3,3,3	0.45	0	2,2,2	0.36	0
5	EDO	C	708	-	3,3,3	0.44	0	2,2,2	0.43	0

In the following table, the Chirals column lists the number of chiral outliers, the number of chiral centers analysed, the number of these observed in the model and the number defined in the chemical component dictionary. Similar counts are reported in the Torsion and Rings columns. '-' means no outliers of that kind were identified.

Mol	Type	Chain	Res	Link	Chirals	Torsions	Rings
3	ATP	A	703[B]	2	-	0/18/38/38	0/3/3/3
4	6R9	A	704[A]	-	-	0/9/31/31	0/3/3/3
5	EDO	A	705	-	-	0/1/1/1	0/0/0/0
5	EDO	A	706	-	-	0/1/1/1	0/0/0/0
5	EDO	A	707	-	-	0/1/1/1	0/0/0/0
5	EDO	A	708	-	-	0/1/1/1	0/0/0/0
3	ATP	B	703[A]	-	-	0/18/38/38	0/3/3/3
4	6R9	B	704[B]	2	-	0/9/31/31	0/3/3/3
5	EDO	B	705	-	-	0/1/1/1	0/0/0/0
5	EDO	B	706	-	-	0/1/1/1	0/0/0/0
5	EDO	B	707	-	-	0/1/1/1	0/0/0/0
3	ATP	C	703[B]	2	-	0/18/38/38	0/3/3/3
4	6R9	C	704[A]	-	-	0/9/31/31	0/3/3/3
6	PO4	C	706	-	-	0/0/0/0	0/0/0/0
5	EDO	C	707	-	-	0/1/1/1	0/0/0/0
5	EDO	C	708	-	-	0/1/1/1	0/0/0/0

The worst 5 of 18 bond length outliers are listed below:

Mol	Chain	Res	Type	Atoms	Z	Observed(Å)	Ideal(Å)
4	C	704[A]	6R9	C12-C13	-12.09	1.34	1.53
4	A	704[A]	6R9	C12-C13	-12.07	1.34	1.53
4	B	704[B]	6R9	C12-C13	-11.85	1.34	1.53
4	B	704[B]	6R9	O14-C10	-6.34	1.30	1.45
4	C	704[A]	6R9	O14-C10	-6.22	1.30	1.45

The worst 5 of 17 bond angle outliers are listed below:

Mol	Chain	Res	Type	Atoms	Z	Observed(°)	Ideal(°)
4	B	704[B]	6R9	N20-C21-N22	-7.81	122.05	128.86
4	C	704[A]	6R9	N20-C21-N22	-7.73	122.13	128.86
4	A	704[A]	6R9	N20-C21-N22	-7.60	122.23	128.86
3	A	703[B]	ATP	N3-C2-N1	-6.03	123.61	128.86
3	C	703[B]	ATP	N3-C2-N1	-5.99	123.64	128.86

There are no chirality outliers.

There are no torsion outliers.

There are no ring outliers.

7 monomers are involved in 8 short contacts:

Mol	Chain	Res	Type	Clashes	Symm-Clashes
3	B	703[A]	ATP	1	0
5	B	706	EDO	1	0
5	B	707	EDO	1	0
3	C	703[B]	ATP	1	0
4	C	704[A]	6R9	1	0
5	C	707	EDO	2	0
5	C	708	EDO	1	0

5.7 Other polymers [i](#)

There are no such residues in this entry.

5.8 Polymer linkage issues [i](#)

There are no chain breaks in this entry.

6 Fit of model and data [i](#)

6.1 Protein, DNA and RNA chains [i](#)

In the following table, the column labelled ‘#RSRZ > 2’ contains the number (and percentage) of RSRZ outliers, followed by percent RSRZ outliers for the chain as percentile scores relative to all X-ray entries and entries of similar resolution. The OWAB column contains the minimum, median, 95th percentile and maximum values of the occupancy-weighted average B-factor per residue. The column labelled ‘Q < 0.9’ lists the number of (and percentage) of residues with an average occupancy less than 0.9.

Mol	Chain	Analysed	<RSRZ>	#RSRZ>2	OWAB(Å ²)	Q<0.9
1	A	656/694 (94%)	-0.17	24 (3%) 42 39	22, 41, 89, 122	0
1	B	655/694 (94%)	0.22	52 (7%) 13 11	25, 58, 100, 124	0
1	C	651/694 (93%)	-0.05	19 (2%) 52 48	27, 55, 94, 130	0
All	All	1962/2082 (94%)	-0.00	95 (4%) 31 29	22, 50, 96, 130	0

The worst 5 of 95 RSRZ outliers are listed below:

Mol	Chain	Res	Type	RSRZ
1	B	600	ALA	6.7
1	B	676	VAL	6.2
1	A	291[A]	GLY	5.8
1	A	578	ALA	5.7
1	A	577	CYS	4.7

6.2 Non-standard residues in protein, DNA, RNA chains [i](#)

There are no non-standard protein/DNA/RNA residues in this entry.

6.3 Carbohydrates [i](#)

There are no carbohydrates in this entry.

6.4 Ligands [i](#)

In the following table, the Atoms column lists the number of modelled atoms in the group and the number defined in the chemical component dictionary. LLDF column lists the quality of electron density of the group with respect to its neighbouring residues in protein, DNA or RNA chains. The B-factors column lists the minimum, median, 95th percentile and maximum values of B factors

of atoms in the group. The column labelled 'Q< 0.9' lists the number of atoms with occupancy less than 0.9.

Mol	Type	Chain	Res	Atoms	RSCC	RSR	LLDF	B-factors(Å ²)	Q<0.9
5	EDO	B	706	4/4	0.95	0.26	13.87	51,51,52,52	0
5	EDO	A	705	4/4	0.96	0.20	4.36	45,45,46,46	0
5	EDO	A	706	4/4	0.90	0.20	3.69	65,68,70,72	0
5	EDO	B	705	4/4	0.95	0.16	2.68	47,47,50,50	0
5	EDO	A	707	4/4	0.95	0.17	1.65	34,34,35,37	0
5	EDO	A	708	4/4	0.89	0.18	1.36	47,47,48,49	0
5	EDO	C	707	4/4	0.94	0.15	1.30	50,51,51,52	0
5	EDO	C	708	4/4	0.92	0.16	0.40	54,56,57,58	0
4	6R9	C	704[A]	26/26	0.95	0.24	-0.12	39,45,47,47	26
4	6R9	A	704[A]	26/26	0.96	0.17	-0.40	23,32,34,35	26
3	ATP	C	703[B]	31/31	0.95	0.20	-0.57	39,45,54,55	31
3	ATP	A	703[B]	31/31	0.97	0.14	-0.88	31,33,50,55	31
4	6R9	B	704[B]	26/26	0.90	0.16	-0.93	64,72,76,76	26
3	ATP	B	703[A]	31/31	0.93	0.13	-1.45	61,72,76,76	31
5	EDO	B	707	4/4	0.96	0.10	-	49,51,53,54	0
2	MG	C	705	1/1	0.80	0.17	-	74,74,74,74	0
2	MG	C	702[B]	1/1	0.86	0.39	-	48,48,48,48	1
2	MG	A	701[B]	1/1	0.98	0.26	-	41,41,41,41	1
2	MG	C	701[B]	1/1	0.95	0.35	-	38,38,38,38	1
6	PO4	C	706	5/5	0.91	0.14	-	78,80,81,81	0
2	MG	B	702[B]	1/1	0.87	0.62	-	66,66,66,66	1
2	MG	A	702[B]	1/1	0.76	0.15	-	49,49,49,49	1
2	MG	B	701[B]	1/1	0.95	0.38	-	34,34,34,34	1

6.5 Other polymers ⓘ

There are no such residues in this entry.