



Full wwPDB X-ray Structure Validation Report ⓘ

Feb 13, 2017 – 10:57 am GMT

PDB ID : 3KB3
Title : Crystal structure of abscisic acid-bound PYL2 in complex with HAB1
Authors : Zhou, X.E.; Melcher, K.; Soon, F.-F.; Ng, L.-M.; Xu, Y.; Suino-Powell, K.M.;
Kovach, A.; Li, J.; Xu, H.E.
Deposited on : 2009-10-20
Resolution : 1.95 Å(reported)

This is a Full wwPDB X-ray Structure Validation Report for a publicly released PDB entry.

We welcome your comments at validation@mail.wwpdb.org

A user guide is available at

<http://wwpdb.org/validation/2016/XrayValidationReportHelp>

with specific help available everywhere you see the ⓘ symbol.

The following versions of software and data (see [references ⓘ](#)) were used in the production of this report:

MolProbity : 4.02b-467
Mogul : 1.7.2 (RC1), CSD as538be (2017)
Xtriage (Phenix) : 1.9-1692
EDS : trunk28620
Percentile statistics : 20161228.v01 (using entries in the PDB archive December 28th 2016)
Refmac : 5.8.0135
CCP4 : 6.5.0
Ideal geometry (proteins) : Engh & Huber (2001)
Ideal geometry (DNA, RNA) : Parkinson et al. (1996)
Validation Pipeline (wwPDB-VP) : recalc28949

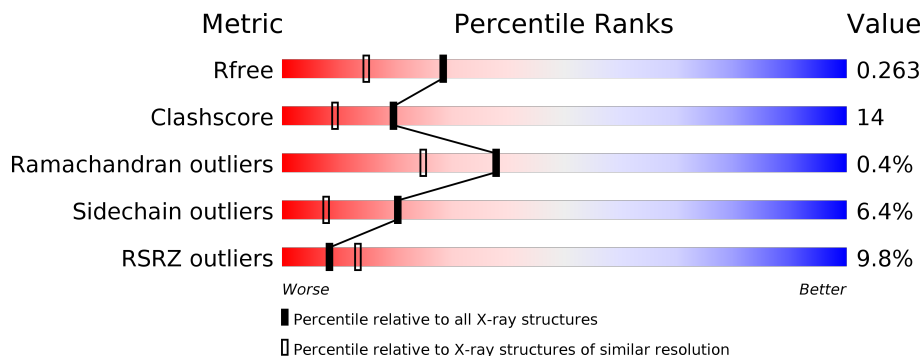
1 Overall quality at a glance

The following experimental techniques were used to determine the structure:

X-RAY DIFFRACTION

The reported resolution of this entry is 1.95 Å.

Percentile scores (ranging between 0-100) for global validation metrics of the entry are shown in the following graphic. The table shows the number of entries on which the scores are based.



Metric	Whole archive (#Entries)	Similar resolution (#Entries, resolution range(Å))
R_{free}	100719	2004 (1.96-1.96)
Clashscore	112137	2136 (1.96-1.96)
Ramachandran outliers	110173	2117 (1.96-1.96)
Sidechain outliers	110143	2117 (1.96-1.96)
RSRZ outliers	101464	2018 (1.96-1.96)

The table below summarises the geometric issues observed across the polymeric chains and their fit to the electron density. The red, orange, yellow and green segments on the lower bar indicate the fraction of residues that contain outliers for ≥ 3 , 2, 1 and 0 types of geometric quality criteria. A grey segment represents the fraction of residues that are not modelled. The numeric value for each fraction is indicated below the corresponding segment, with a dot representing fractions $\leq 5\%$. The upper red bar (where present) indicates the fraction of residues that have poor fit to the electron density. The numeric value is given above the bar.

Mol	Chain	Length	Quality of chain
1	A	176	<div> <div>5%</div> <div> <div></div> <div>78%</div> <div>16%</div> <div>6%</div> </div> </div>
2	B	321	<div> <div>12%</div> <div> <div></div> <div>68%</div> <div>20%</div> <div>•</div> <div>8%</div> </div> </div>

2 Entry composition [i](#)

There are 5 unique types of molecules in this entry. The entry contains 3933 atoms, of which 0 are hydrogens and 0 are deuteriums.

In the tables below, the ZeroOcc column contains the number of atoms modelled with zero occupancy, the AltConf column contains the number of residues with at least one atom in alternate conformation and the Trace column contains the number of residues modelled with at most 2 atoms.

- Molecule 1 is a protein called Putative uncharacterized protein At2g26040.

Mol	Chain	Residues	Atoms					ZeroOcc	AltConf	Trace
1	A	176	Total	C	N	O	S	0	0	0
			1395	876	243	272	4			

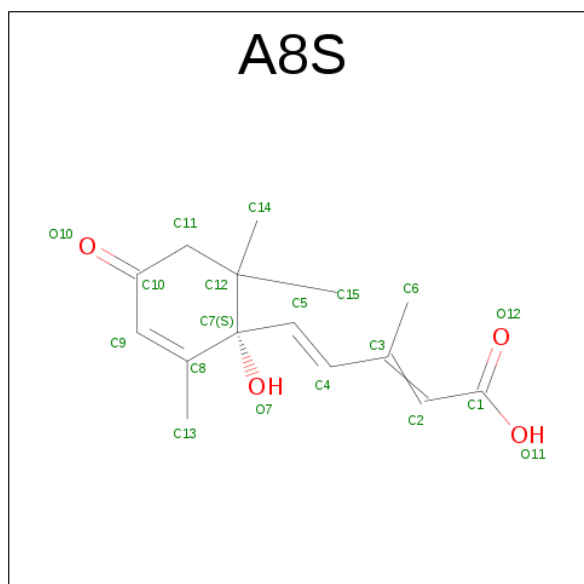
There is a discrepancy between the modelled and reference sequences:

Chain	Residue	Modelled	Actual	Comment	Reference
A	13	SER	-	EXPRESSION TAG	UNP O80992

- Molecule 2 is a protein called Protein phosphatase 2C 16.

Mol	Chain	Residues	Atoms					ZeroOcc	AltConf	Trace
2	B	294	Total	C	N	O	S	0	0	0
			2286	1441	408	421	16			

- Molecule 3 is (2Z,4E)-5-[(1S)-1-HYDROXY-2,6,6-TRIMETHYL-4-OXOCYCLOHEX-2-EN-1-YL]-3-METHYLPENTA-2,4-DIENOIC ACID (three-letter code: A8S) (formula: C₁₅H₂₀O₄).



Mol	Chain	Residues	Atoms			ZeroOcc	AltConf
3	A	1	Total	C	O	0	0
			19	15	4		

- Molecule 4 is MAGNESIUM ION (three-letter code: MG) (formula: Mg).

Mol	Chain	Residues	Atoms		ZeroOcc	AltConf
4	B	3	Total	Mg	0	0
			3	3		

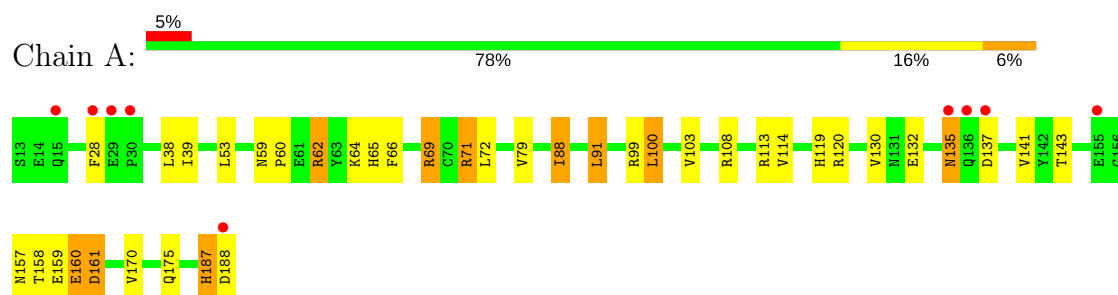
- Molecule 5 is water.

Mol	Chain	Residues	Atoms		ZeroOcc	AltConf
5	A	118	Total	O	0	0
			118	118		
5	B	112	Total	O	0	0
			112	112		

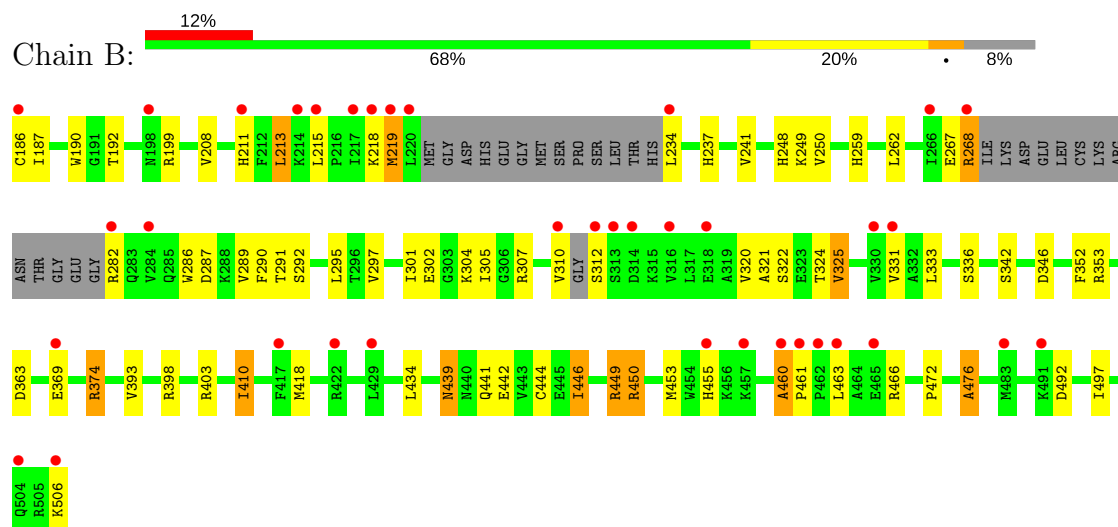
3 Residue-property plots

These plots are drawn for all protein, RNA and DNA chains in the entry. The first graphic for a chain summarises the proportions of the various outlier classes displayed in the second graphic. The second graphic shows the sequence view annotated by issues in geometry and electron density. Residues are color-coded according to the number of geometric quality criteria for which they contain at least one outlier: green = 0, yellow = 1, orange = 2 and red = 3 or more. A red dot above a residue indicates a poor fit to the electron density ($RSRZ > 2$). Stretches of 2 or more consecutive residues without any outlier are shown as a green connector. Residues present in the sample, but not in the model, are shown in grey.

- Molecule 1: Putative uncharacterized protein At2g26040



- Molecule 2: Protein phosphatase 2C 16



4 Data and refinement statistics

Property	Value	Source
Space group	P 21 21 21	Depositor
Cell constants a, b, c, α , β , γ	60.32Å 67.47Å 143.91Å 90.00° 90.00° 90.00°	Depositor
Resolution (Å)	29.52 – 1.95 29.52 – 1.93	Depositor EDS
% Data completeness (in resolution range)	94.3 (29.52-1.95) 92.7 (29.52-1.93)	Depositor EDS
R_{merge}	(Not available)	Depositor
R_{sym}	0.09	Depositor
$\langle I/\sigma(I) \rangle$ ¹	2.22 (at 1.93Å)	Xtriage
Refinement program	REFMAC 5.5.0072	Depositor
R, R_{free}	0.214 , 0.259 0.218 , 0.263	Depositor DCC
R_{free} test set	2918 reflections (7.64%)	DCC
Wilson B-factor (Å ²)	29.1	Xtriage
Anisotropy	0.824	Xtriage
Bulk solvent k_{sol} (e/Å ³), B_{sol} (Å ²)	0.30 , 45.8	EDS
L-test for twinning ²	$\langle L \rangle = 0.49$, $\langle L^2 \rangle = 0.33$	Xtriage
Estimated twinning fraction	No twinning to report.	Xtriage
F_o, F_c correlation	0.94	EDS
Total number of atoms	3933	wwPDB-VP
Average B, all atoms (Å ²)	49.0	wwPDB-VP

Xtriage's analysis on translational NCS is as follows: *The largest off-origin peak in the Patterson function is 7.32% of the height of the origin peak. No significant pseudotranslation is detected.*

¹Intensities estimated from amplitudes.

²Theoretical values of $\langle |L| \rangle$, $\langle L^2 \rangle$ for acentric reflections are 0.5, 0.333 respectively for untwinned datasets, and 0.375, 0.2 for perfectly twinned datasets.

5 Model quality

5.1 Standard geometry

Bond lengths and bond angles in the following residue types are not validated in this section: A8S, MG

The Z score for a bond length (or angle) is the number of standard deviations the observed value is removed from the expected value. A bond length (or angle) with $|Z| > 5$ is considered an outlier worth inspection. RMSZ is the root-mean-square of all Z scores of the bond lengths (or angles).

Mol	Chain	Bond lengths		Bond angles	
		RMSZ	$\# Z > 5$	RMSZ	$\# Z > 5$
1	A	1.20	1/1423 (0.1%)	1.07	9/1933 (0.5%)
2	B	0.97	4/2328 (0.2%)	0.93	5/3139 (0.2%)
All	All	1.07	5/3751 (0.1%)	0.99	14/5072 (0.3%)

Chiral center outliers are detected by calculating the chiral volume of a chiral center and verifying if the center is modelled as a planar moiety or with the opposite hand. A planarity outlier is detected by checking planarity of atoms in a peptide group, atoms in a mainchain group or atoms of a sidechain that are expected to be planar.

Mol	Chain	#Chirality outliers	#Planarity outliers
1	A	0	1

All (5) bond length outliers are listed below:

Mol	Chain	Res	Type	Atoms	Z	Observed(Å)	Ideal(Å)
2	B	325	VAL	CB-CG1	-6.84	1.38	1.52
2	B	241	VAL	CB-CG2	5.92	1.65	1.52
2	B	476	ALA	CA-CB	5.50	1.64	1.52
1	A	132	GLU	CD-OE2	5.37	1.31	1.25
2	B	250	VAL	CB-CG2	5.19	1.63	1.52

All (14) bond angle outliers are listed below:

Mol	Chain	Res	Type	Atoms	Z	Observed(°)	Ideal(°)
2	B	363	ASP	CB-CG-OD1	7.48	125.03	118.30
2	B	346	ASP	CB-CG-OD1	7.36	124.92	118.30
1	A	99	ARG	NE-CZ-NH2	7.14	123.87	120.30
1	A	161	ASP	CB-CG-OD1	6.90	124.51	118.30
1	A	99	ARG	NE-CZ-NH1	-6.46	117.07	120.30
2	B	346	ASP	CB-CG-OD2	-6.36	112.58	118.30

Continued on next page...

Continued from previous page...

Mol	Chain	Res	Type	Atoms	Z	Observed(°)	Ideal(°)
2	B	449	ARG	NE-CZ-NH1	6.15	123.37	120.30
1	A	113	ARG	NE-CZ-NH2	-6.04	117.28	120.30
1	A	71	ARG	NE-CZ-NH2	5.77	123.18	120.30
1	A	100	LEU	CA-CB-CG	5.45	127.82	115.30
1	A	108	ARG	NE-CZ-NH2	-5.33	117.63	120.30
1	A	71	ARG	NE-CZ-NH1	-5.04	117.78	120.30
2	B	199	ARG	NE-CZ-NH1	-5.04	117.78	120.30
1	A	69	ARG	NE-CZ-NH1	-5.00	117.80	120.30

There are no chirality outliers.

All (1) planarity outliers are listed below:

Mol	Chain	Res	Type	Group
1	A	187	HIS	Peptide

5.2 Too-close contacts ⓘ

In the following table, the Non-H and H(model) columns list the number of non-hydrogen atoms and hydrogen atoms in the chain respectively. The H(added) column lists the number of hydrogen atoms added and optimized by MolProbity. The Clashes column lists the number of clashes within the asymmetric unit, whereas Symm-Clashes lists symmetry related clashes.

Mol	Chain	Non-H	H(model)	H(added)	Clashes	Symm-Clashes
1	A	1395	0	1382	29	0
2	B	2286	0	2286	79	0
3	A	19	0	19	1	0
4	B	3	0	0	0	0
5	A	118	0	0	5	0
5	B	112	0	0	10	0
All	All	3933	0	3687	106	0

The all-atom clashscore is defined as the number of clashes found per 1000 atoms (including hydrogen atoms). The all-atom clashscore for this structure is 14.

All (106) close contacts within the same asymmetric unit are listed below, sorted by their clash magnitude.

Atom-1	Atom-2	Interatomic distance (Å)	Clash overlap (Å)
1:A:158:THR:HG23	1:A:161:ASP:H	1.27	0.99
2:B:192:THR:HG22	2:B:497:ILE:HD12	1.48	0.95

Continued on next page...

Continued from previous page...

Atom-1	Atom-2	Interatomic distance (Å)	Clash overlap (Å)
2:B:287:ASP:O	2:B:291:THR:HG23	1.71	0.88
2:B:449:ARG:HD2	2:B:453:MET:CE	2.05	0.86
2:B:442:GLU:O	2:B:446:ILE:HD13	1.81	0.81
2:B:449:ARG:HD2	2:B:453:MET:HE1	1.60	0.80
2:B:301:ILE:HG12	2:B:320:VAL:HG11	1.65	0.76
2:B:321:ALA:HB1	2:B:325:VAL:HG11	1.67	0.76
2:B:301:ILE:HG23	2:B:320:VAL:CG1	2.17	0.74
1:A:65:HIS:O	2:B:324:THR:HG21	1.86	0.74
2:B:460:ALA:CB	2:B:461:PRO:HA	2.17	0.74
2:B:190:TRP:CZ3	2:B:208:VAL:HG11	2.24	0.72
2:B:460:ALA:HB1	2:B:461:PRO:CA	2.19	0.72
2:B:187:ILE:O	2:B:187:ILE:HG23	1.90	0.72
2:B:192:THR:CG2	2:B:497:ILE:HD12	2.19	0.71
2:B:310:VAL:HG22	2:B:312:SER:O	1.93	0.69
2:B:286:TRP:HA	2:B:289:VAL:HG12	1.74	0.69
2:B:310:VAL:HG13	2:B:312:SER:HA	1.75	0.69
2:B:439:ASN:HD22	2:B:441:GLN:H	1.41	0.69
2:B:460:ALA:CB	2:B:461:PRO:CA	2.72	0.68
2:B:213:LEU:HD13	2:B:215:LEU:HD21	1.75	0.68
2:B:374:ARG:HH21	2:B:374:ARG:HG3	1.59	0.68
2:B:460:ALA:HB1	2:B:461:PRO:HA	1.74	0.67
1:A:66:PHE:O	1:A:88:ILE:HD12	1.96	0.66
2:B:213:LEU:HD13	2:B:215:LEU:CD2	2.26	0.66
2:B:301:ILE:HA	2:B:320:VAL:HG12	1.78	0.65
2:B:410:ILE:HD13	2:B:410:ILE:H	1.61	0.65
1:A:120:ARG:HH12	1:A:157:ASN:ND2	1.99	0.61
2:B:460:ALA:HB1	2:B:461:PRO:C	2.21	0.61
2:B:449:ARG:HD2	2:B:453:MET:HE3	1.84	0.59
2:B:322:SER:O	2:B:325:VAL:HG12	2.01	0.59
1:A:39:ILE:HD12	1:A:170:VAL:HB	1.84	0.58
1:A:187:HIS:HD2	1:A:188:ASP:HA	1.68	0.57
1:A:79:VAL:CG2	1:A:103:VAL:HG22	2.34	0.56
2:B:463:LEU:HD12	2:B:466:ARG:HB3	1.89	0.55
2:B:398:ARG:HG2	2:B:410:ILE:HD13	1.88	0.54
1:A:69:ARG:NE	5:A:259:HOH:O	2.41	0.54
1:A:130:VAL:HG13	1:A:143:THR:HG21	1.89	0.54
1:A:91:LEU:HD13	2:B:393:VAL:HG13	1.90	0.54
2:B:352:PHE:CG	2:B:444:CYS:HB3	2.44	0.53
1:A:114:VAL:HG11	1:A:119:HIS:CE1	2.44	0.53
2:B:186:CYS:N	2:B:237:HIS:HE1	2.08	0.52
2:B:403:ARG:HG3	5:B:45:HOH:O	2.10	0.51

Continued on next page...

Continued from previous page...

Atom-1	Atom-2	Interatomic distance (Å)	Clash overlap (Å)
1:A:187:HIS:CD2	1:A:188:ASP:HA	2.46	0.51
2:B:449:ARG:NH2	5:B:29:HOH:O	2.43	0.51
2:B:213:LEU:CD1	2:B:215:LEU:HD21	2.41	0.50
2:B:301:ILE:CA	2:B:320:VAL:HG12	2.41	0.50
1:A:88:ILE:N	1:A:88:ILE:HD13	2.27	0.50
2:B:398:ARG:HG2	2:B:410:ILE:CD1	2.41	0.50
1:A:158:THR:OG1	1:A:160:GLU:OE1	2.30	0.50
1:A:69:ARG:CZ	5:A:259:HOH:O	2.59	0.50
2:B:460:ALA:HB3	2:B:461:PRO:HA	1.91	0.50
2:B:187:ILE:O	2:B:187:ILE:CG2	2.59	0.50
2:B:439:ASN:HD22	2:B:441:GLN:N	2.08	0.50
2:B:301:ILE:HG23	2:B:320:VAL:HG12	1.92	0.49
2:B:211:HIS:H	2:B:237:HIS:HD2	1.61	0.49
1:A:39:ILE:HD12	1:A:170:VAL:CG1	2.43	0.48
2:B:295:LEU:HD21	5:B:520:HOH:O	2.13	0.48
2:B:302:GLU:HG3	2:B:403:ARG:HD3	1.96	0.48
2:B:186:CYS:HB2	2:B:336:SER:HB3	1.95	0.48
2:B:450:ARG:CZ	2:B:476:ALA:HB1	2.44	0.48
2:B:219:MET:HB3	2:B:219:MET:HE2	1.73	0.48
1:A:79:VAL:HG23	1:A:103:VAL:HG22	1.95	0.47
2:B:455:HIS:C	5:B:55:HOH:O	2.53	0.47
2:B:322:SER:O	2:B:325:VAL:CG1	2.63	0.47
2:B:259:HIS:HD2	5:B:9:HOH:O	1.98	0.47
2:B:267:GLU:N	2:B:267:GLU:OE2	2.47	0.46
2:B:290:PHE:HZ	2:B:333:LEU:HD13	1.81	0.46
2:B:324:THR:HG23	5:B:44:HOH:O	2.15	0.46
2:B:262:LEU:HD21	2:B:333:LEU:HD11	1.98	0.46
3:A:189:A8S:H5	3:A:189:A8S:H6	1.70	0.45
1:A:175:GLN:NE2	5:A:288:HOH:O	2.49	0.45
2:B:307:ARG:HD3	5:B:72:HOH:O	2.16	0.45
2:B:374:ARG:CG	2:B:374:ARG:HH21	2.23	0.45
2:B:353:ARG:HH12	2:B:418:MET:HE1	1.81	0.45
2:B:310:VAL:HG13	2:B:312:SER:OG	2.16	0.45
2:B:463:LEU:HA	2:B:466:ARG:HB2	1.98	0.45
2:B:211:HIS:H	2:B:237:HIS:CD2	2.35	0.44
2:B:310:VAL:HG13	2:B:312:SER:CA	2.46	0.44
2:B:301:ILE:HA	2:B:320:VAL:CG1	2.46	0.44
1:A:135:ASN:ND2	1:A:137:ASP:OD1	2.50	0.44
2:B:449:ARG:CZ	5:B:29:HOH:O	2.65	0.44
1:A:28:PHE:HD1	5:A:296:HOH:O	1.99	0.44
2:B:248:HIS:CE1	2:B:249:LYS:HD2	2.53	0.44

Continued on next page...

Continued from previous page...

Atom-1	Atom-2	Interatomic distance (Å)	Clash overlap (Å)
2:B:374:ARG:CZ	2:B:410:ILE:HD12	2.48	0.44
2:B:262:LEU:CD2	2:B:333:LEU:HD11	2.48	0.43
2:B:331:VAL:CG2	2:B:342:SER:HB3	2.49	0.43
1:A:59:ASN:OD1	1:A:62:ARG:HG3	2.19	0.43
1:A:88:ILE:H	1:A:88:ILE:CD1	2.31	0.43
1:A:91:LEU:CD1	2:B:393:VAL:HG13	2.48	0.43
1:A:130:VAL:HG13	1:A:143:THR:CG2	2.49	0.43
2:B:472:PRO:HG2	5:B:182:HOH:O	2.19	0.43
2:B:304:LYS:C	2:B:305:ILE:HD12	2.39	0.42
1:A:66:PHE:HA	1:A:88:ILE:HD12	2.01	0.42
2:B:305:ILE:N	2:B:305:ILE:CD1	2.82	0.42
2:B:292:SER:HB2	5:B:180:HOH:O	2.20	0.42
1:A:60:PRO:HB2	1:A:64:LYS:HD2	2.02	0.42
2:B:305:ILE:N	2:B:305:ILE:HD12	2.35	0.42
1:A:88:ILE:N	1:A:88:ILE:CD1	2.83	0.41
2:B:267:GLU:O	2:B:268:ARG:C	2.58	0.41
1:A:159:GLU:HG2	5:A:225:HOH:O	2.20	0.41
2:B:321:ALA:HB1	2:B:325:VAL:CG1	2.44	0.41
1:A:66:PHE:CA	1:A:88:ILE:HD12	2.50	0.41
2:B:286:TRP:HA	2:B:289:VAL:CG1	2.48	0.41
2:B:286:TRP:CE3	2:B:289:VAL:HG11	2.56	0.40
2:B:302:GLU:HG2	2:B:304:LYS:HG2	2.02	0.40

There are no symmetry-related clashes.

5.3 Torsion angles [i](#)

5.3.1 Protein backbone [i](#)

In the following table, the Percentiles column shows the percent Ramachandran outliers of the chain as a percentile score with respect to all X-ray entries followed by that with respect to entries of similar resolution.

The Analysed column shows the number of residues for which the backbone conformation was analysed, and the total number of residues.

Mol	Chain	Analysed	Favoured	Allowed	Outliers	Percentiles	
1	A	174/176 (99%)	168 (97%)	6 (3%)	0	100	100
2	B	286/321 (89%)	273 (96%)	11 (4%)	2 (1%)	25	13
All	All	460/497 (93%)	441 (96%)	17 (4%)	2 (0%)	38	25

All (2) Ramachandran outliers are listed below:

Mol	Chain	Res	Type
2	B	219	MET
2	B	460	ALA

5.3.2 Protein sidechains ⓘ

In the following table, the Percentiles column shows the percent sidechain outliers of the chain as a percentile score with respect to all X-ray entries followed by that with respect to entries of similar resolution.

The Analysed column shows the number of residues for which the sidechain conformation was analysed, and the total number of residues.

Mol	Chain	Analysed	Rotameric	Outliers	Percentiles	
1	A	161/161 (100%)	150 (93%)	11 (7%)	18	6
2	B	245/267 (92%)	230 (94%)	15 (6%)	22	8
All	All	406/428 (95%)	380 (94%)	26 (6%)	20	8

All (26) residues with a non-rotameric sidechain are listed below:

Mol	Chain	Res	Type
1	A	38	LEU
1	A	53	LEU
1	A	62	ARG
1	A	71	ARG
1	A	72	LEU
1	A	88	ILE
1	A	91	LEU
1	A	100	LEU
1	A	135	ASN
1	A	141	VAL
1	A	160	GLU
2	B	213	LEU
2	B	218	LYS
2	B	234	LEU
2	B	268	ARG
2	B	282	ARG
2	B	297	VAL
2	B	369	GLU
2	B	374	ARG
2	B	410	ILE
2	B	434	LEU

Continued on next page...

Continued from previous page...

Mol	Chain	Res	Type
2	B	439	ASN
2	B	446	ILE
2	B	450	ARG
2	B	492	ASP
2	B	506	LYS

Some sidechains can be flipped to improve hydrogen bonding and reduce clashes. All (11) such sidechains are listed below:

Mol	Chain	Res	Type
1	A	123	ASN
1	A	135	ASN
1	A	157	ASN
1	A	175	GLN
1	A	187	HIS
2	B	237	HIS
2	B	259	HIS
2	B	285	GLN
2	B	439	ASN
2	B	475	GLN
2	B	487	GLN

5.3.3 RNA [i](#)

There are no RNA molecules in this entry.

5.4 Non-standard residues in protein, DNA, RNA chains [i](#)

There are no non-standard protein/DNA/RNA residues in this entry.

5.5 Carbohydrates [i](#)

There are no carbohydrates in this entry.

5.6 Ligand geometry [i](#)

Of 4 ligands modelled in this entry, 3 are monoatomic - leaving 1 for Mogul analysis.

In the following table, the Counts columns list the number of bonds (or angles) for which Mogul statistics could be retrieved, the number of bonds (or angles) that are observed in the model and

the number of bonds (or angles) that are defined in the chemical component dictionary. The Link column lists molecule types, if any, to which the group is linked. The Z score for a bond length (or angle) is the number of standard deviations the observed value is removed from the expected value. A bond length (or angle) with $|Z| > 2$ is considered an outlier worth inspection. RMSZ is the root-mean-square of all Z scores of the bond lengths (or angles).

Mol	Type	Chain	Res	Link	Bond lengths			Bond angles		
					Counts	RMSZ	$\# Z > 2$	Counts	RMSZ	$\# Z > 2$
3	A8S	A	189	-	14,19,19	2.81	5 (35%)	14,29,29	3.36	9 (64%)

In the following table, the Chirals column lists the number of chiral outliers, the number of chiral centers analysed, the number of these observed in the model and the number defined in the chemical component dictionary. Similar counts are reported in the Torsion and Rings columns. '-' means no outliers of that kind were identified.

Mol	Type	Chain	Res	Link	Chirals	Torsions	Rings
3	A8S	A	189	-	-	0/8/34/34	0/1/1/1

All (5) bond length outliers are listed below:

Mol	Chain	Res	Type	Atoms	Z	Observed(Å)	Ideal(Å)
3	A	189	A8S	C7-C12	-6.71	1.47	1.57
3	A	189	A8S	C9-C8	2.08	1.36	1.34
3	A	189	A8S	C9-C10	2.90	1.51	1.45
3	A	189	A8S	C11-C10	3.94	1.55	1.50
3	A	189	A8S	C15-C12	5.22	1.64	1.53

All (9) bond angle outliers are listed below:

Mol	Chain	Res	Type	Atoms	Z	Observed(°)	Ideal(°)
3	A	189	A8S	C15-C12-C11	-8.14	92.24	108.26
3	A	189	A8S	C8-C9-C10	-4.77	118.92	123.81
3	A	189	A8S	C6-C3-C4	-3.46	112.59	118.10
3	A	189	A8S	C6-C3-C2	-2.57	119.78	124.85
3	A	189	A8S	C12-C11-C10	-2.25	111.23	113.79
3	A	189	A8S	C14-C12-C15	-2.19	104.05	107.34
3	A	189	A8S	C14-C12-C11	2.13	112.44	108.26
3	A	189	A8S	C4-C3-C2	3.43	127.44	118.74
3	A	189	A8S	C11-C10-C9	3.84	122.95	117.45

There are no chirality outliers.

There are no torsion outliers.

There are no ring outliers.

1 monomer is involved in 1 short contact:

Mol	Chain	Res	Type	Clashes	Symm-Clashes
3	A	189	A8S	1	0

5.7 Other polymers [i](#)

There are no such residues in this entry.

5.8 Polymer linkage issues [i](#)

There are no chain breaks in this entry.

6 Fit of model and data

6.1 Protein, DNA and RNA chains

In the following table, the column labelled ‘#RSRZ> 2’ contains the number (and percentage) of RSRZ outliers, followed by percent RSRZ outliers for the chain as percentile scores relative to all X-ray entries and entries of similar resolution. The OWAB column contains the minimum, median, 95th percentile and maximum values of the occupancy-weighted average B-factor per residue. The column labelled ‘Q< 0.9’ lists the number of (and percentage) of residues with an average occupancy less than 0.9.

Mol	Chain	Analysed	<RSRZ>	#RSRZ>2	OWAB(Å ²)	Q<0.9
1	A	176/176 (100%)	0.15	9 (5%) 29 39	22, 32, 74, 87	0
2	B	294/321 (91%)	0.70	37 (12%) 4 7	25, 47, 124, 170	0
All	All	470/497 (94%)	0.49	46 (9%) 8 13	22, 41, 109, 170	0

All (46) RSRZ outliers are listed below:

Mol	Chain	Res	Type	RSRZ
1	A	28	PHE	6.6
2	B	313	SER	6.1
1	A	29	GLU	5.8
2	B	460	ALA	5.8
1	A	136	GLN	5.1
2	B	465	GLU	4.8
2	B	461	PRO	4.7
2	B	506	LYS	4.6
2	B	219	MET	4.2
1	A	137	ASP	4.2
2	B	330	VAL	4.1
2	B	220	LEU	4.0
2	B	314	ASP	3.8
2	B	266	ILE	3.4
2	B	234	LEU	3.4
1	A	15	GLN	3.4
2	B	463	LEU	3.4
2	B	186	CYS	3.2
2	B	462	PRO	3.2
2	B	316	VAL	3.1
2	B	214	LYS	3.0
2	B	218	LYS	3.0
2	B	198	ASN	2.9
1	A	188	ASP	2.9

Continued on next page...

Continued from previous page...

Mol	Chain	Res	Type	RSRZ
2	B	457	LYS	2.6
2	B	318	GLU	2.6
1	A	30	PRO	2.6
2	B	312	SER	2.6
2	B	284	VAL	2.6
1	A	135	ASN	2.5
2	B	331	VAL	2.5
2	B	369	GLU	2.4
2	B	504	GLN	2.4
2	B	310	VAL	2.3
2	B	268	ARG	2.3
2	B	483	MET	2.3
2	B	417	PHE	2.3
2	B	211	HIS	2.3
2	B	217	ILE	2.3
2	B	215	LEU	2.3
2	B	455	HIS	2.2
2	B	282	ARG	2.2
2	B	491	LYS	2.1
1	A	155	GLU	2.1
2	B	422	ARG	2.0
2	B	429	LEU	2.0

6.2 Non-standard residues in protein, DNA, RNA chains [i](#)

There are no non-standard protein/DNA/RNA residues in this entry.

6.3 Carbohydrates [i](#)

There are no carbohydrates in this entry.

6.4 Ligands [i](#)

In the following table, the Atoms column lists the number of modelled atoms in the group and the number defined in the chemical component dictionary. LLDF column lists the quality of electron density of the group with respect to its neighbouring residues in protein, DNA or RNA chains. The B-factors column lists the minimum, median, 95th percentile and maximum values of B factors of atoms in the group. The column labelled 'Q < 0.9' lists the number of atoms with occupancy less than 0.9.

Mol	Type	Chain	Res	Atoms	RSCC	RSR	LLDF	B-factors(\AA^2)	Q<0.9
4	MG	B	998	1/1	0.96	0.14	1.13	42,42,42,42	0
3	A8S	A	189	19/19	0.94	0.11	0.07	18,24,28,35	0
4	MG	B	999	1/1	0.99	0.06	-2.70	37,37,37,37	0
4	MG	B	997	1/1	0.91	0.09	-	47,47,47,47	0

6.5 Other polymers [i](#)

There are no such residues in this entry.