



# Full wwPDB X-ray Structure Validation Report ⓘ

Oct 25, 2017 – 11:34 PM EDT

PDB ID : 3KC0  
Title : Crystal structure of human liver FBPase in complex with tricyclic inhibitor 10b  
Authors : Takahashi, M.; Sone, J.; Hanzawa, H.  
Deposited on : unknown  
Resolution : 2.80 Å(reported)

This is a Full wwPDB X-ray Structure Validation Report for a publicly released PDB entry.

We welcome your comments at [validation@mail.wwpdb.org](mailto:validation@mail.wwpdb.org)

A user guide is available at

<http://wwpdb.org/validation/2016/XrayValidationReportHelp>

with specific help available everywhere you see the ⓘ symbol.

---

The following versions of software and data (see [references ⓘ](#)) were used in the production of this report:

MolProbity : 4.02b-467  
Mogul : 1.7.2 (RC1), CSD as538be (2017)  
Xtriage (Phenix) : 1.9-1692  
EDS : rb-20030345  
Percentile statistics : 20161228.v01 (using entries in the PDB archive December 28th 2016)  
Refmac : 5.8.0135  
CCP4 : 6.5.0  
Ideal geometry (proteins) : Engh & Huber (2001)  
Ideal geometry (DNA, RNA) : Parkinson et al. (1996)  
Validation Pipeline (wwPDB-VP) : rb-20030345

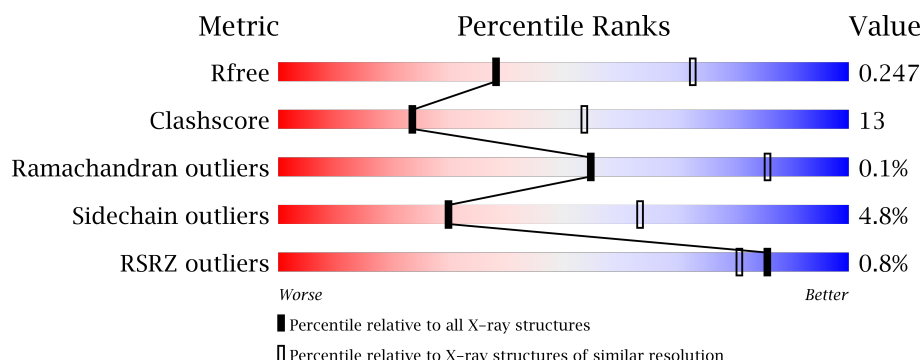
# 1 Overall quality at a glance

The following experimental techniques were used to determine the structure:

## *X-RAY DIFFRACTION*

The reported resolution of this entry is 2.80 Å.

Percentile scores (ranging between 0-100) for global validation metrics of the entry are shown in the following graphic. The table shows the number of entries on which the scores are based.



Metric	Whole archive (#Entries)	Similar resolution (#Entries, resolution range(Å))
$R_{free}$	100719	2583 (2.80-2.80)
Clashscore	112137	3033 (2.80-2.80)
Ramachandran outliers	110173	2983 (2.80-2.80)
Sidechain outliers	110143	2985 (2.80-2.80)
RSRZ outliers	101464	2610 (2.80-2.80)

The table below summarises the geometric issues observed across the polymeric chains and their fit to the electron density. The red, orange, yellow and green segments on the lower bar indicate the fraction of residues that contain outliers for  $\geq 3$ , 2, 1 and 0 types of geometric quality criteria. A grey segment represents the fraction of residues that are not modelled. The numeric value for each fraction is indicated below the corresponding segment, with a dot representing fractions  $\leq 5\%$ . The upper red bar (where present) indicates the fraction of residues that have poor fit to the electron density. The numeric value is given above the bar.

Mol	Chain	Length	Quality of chain
1	A	337	
1	B	337	
1	C	337	
1	D	337	

## 2 Entry composition [i](#)

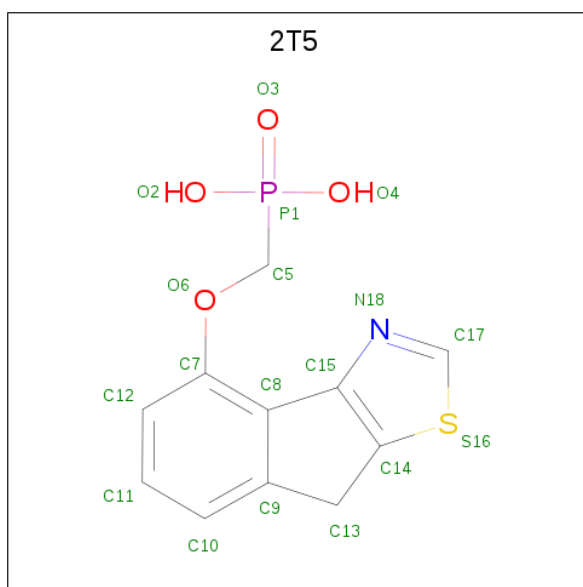
There are 3 unique types of molecules in this entry. The entry contains 10087 atoms, of which 0 are hydrogens and 0 are deuteriums.

In the tables below, the ZeroOcc column contains the number of atoms modelled with zero occupancy, the AltConf column contains the number of residues with at least one atom in alternate conformation and the Trace column contains the number of residues modelled with at most 2 atoms.

- Molecule 1 is a protein called Fructose-1,6-bisphosphatase 1.

Mol	Chain	Residues	Atoms					ZeroOcc	AltConf	Trace
1	A	319	Total	C	N	O	S	0	0	0
			2441	1556	409	459	17			
1	B	318	Total	C	N	O	S	0	0	0
			2434	1551	408	458	17			
1	C	318	Total	C	N	O	S	0	0	0
			2434	1551	408	458	17			
1	D	318	Total	C	N	O	S	0	0	0
			2434	1551	408	458	17			

- Molecule 2 is [(8H-indeno[1,2-d][1,3]thiazol-4-yloxy)methyl]phosphonic acid (three-letter code: 2T5) (formula: C<sub>11</sub>H<sub>10</sub>NO<sub>4</sub>PS).



Mol	Chain	Residues	Atoms					ZeroOcc	AltConf
2	A	1	Total	C	N	O	P	S	0
			18	11	1	4	1	1	
2	B	1	Total	C	N	O	P	S	0
			18	11	1	4	1	1	

*Continued on next page...*

*Continued from previous page...*

Mol	Chain	Residues	Atoms						ZeroOcc	AltConf
2	C	1	Total	C	N	O	P	S	0	0
			18	11	1	4	1	1		
2	D	1	Total	C	N	O	P	S	0	0
			18	11	1	4	1	1		

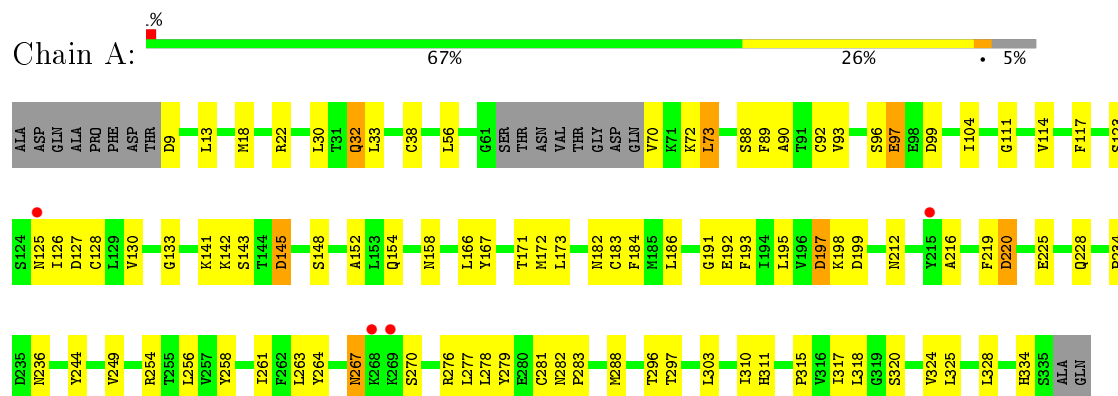
- Molecule 3 is water.

Mol	Chain	Residues	Atoms		ZeroOcc	AltConf
3	A	37	Total	O	0	0
			37	37		
3	B	71	Total	O	0	0
			71	71		
3	C	81	Total	O	0	0
			81	81		
3	D	83	Total	O	0	0
			83	83		

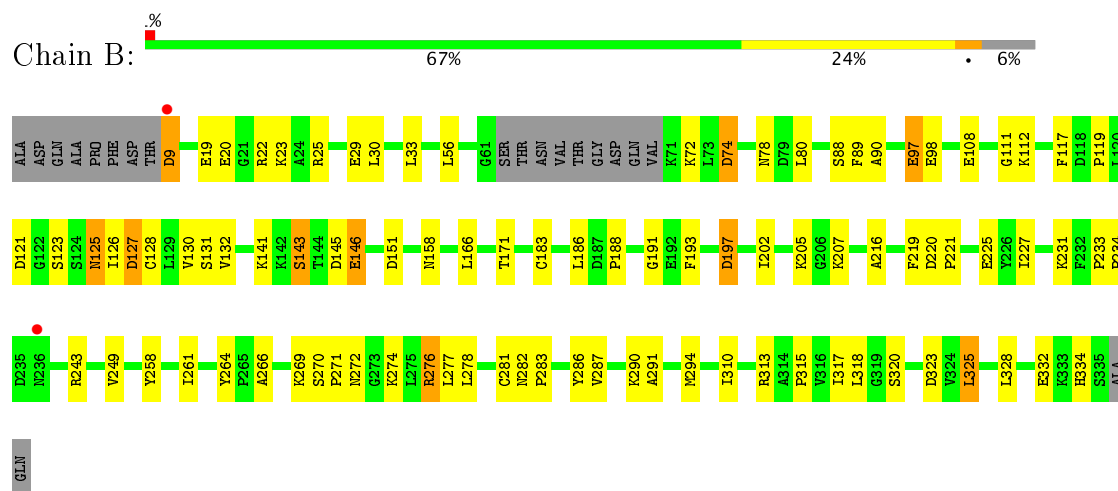
### 3 Residue-property plots [i](#)

These plots are drawn for all protein, RNA and DNA chains in the entry. The first graphic for a chain summarises the proportions of the various outlier classes displayed in the second graphic. The second graphic shows the sequence view annotated by issues in geometry and electron density. Residues are color-coded according to the number of geometric quality criteria for which they contain at least one outlier: green = 0, yellow = 1, orange = 2 and red = 3 or more. A red dot above a residue indicates a poor fit to the electron density ( $RSRZ > 2$ ). Stretches of 2 or more consecutive residues without any outlier are shown as a green connector. Residues present in the sample, but not in the model, are shown in grey.

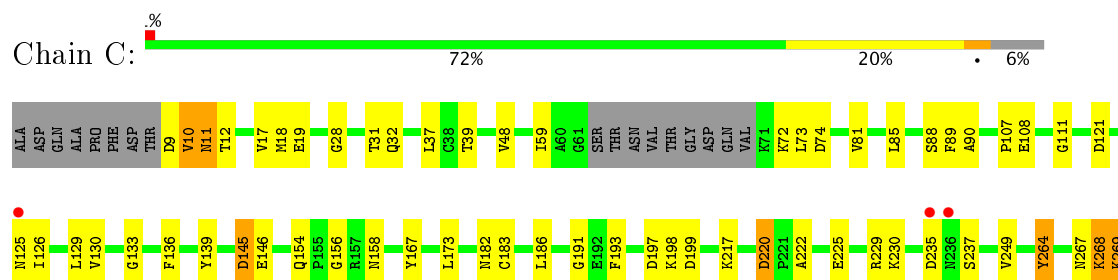
#### • Molecule 1: Fructose-1,6-bisphosphatase 1

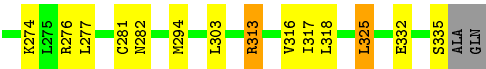


#### • Molecule 1: Fructose-1,6-bisphosphatase 1

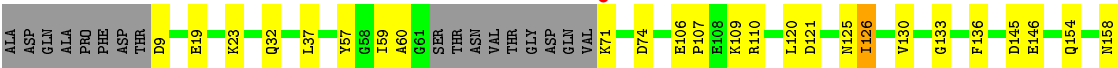


#### • Molecule 1: Fructose-1,6-bisphosphatase 1





● Molecule 1: Fructose-1,6-bisphosphatase 1



## 4 Data and refinement statistics

Property	Value	Source
Space group	P 21 21 21	Depositor
Cell constants a, b, c, $\alpha$ , $\beta$ , $\gamma$	67.25Å 82.82Å 276.63Å 90.00° 90.00° 90.00°	Depositor
Resolution (Å)	19.91 – 2.80 39.67 – 2.80	Depositor EDS
% Data completeness (in resolution range)	99.9 (19.91-2.80) 99.8 (39.67-2.80)	Depositor EDS
$R_{merge}$	0.10	Depositor
$R_{sym}$	(Not available)	Depositor
$\langle I/\sigma(I) \rangle$ <sup>1</sup>	3.88 (at 2.81Å)	Xtriage
Refinement program	CNS, CNX 2000.1	Depositor
R, $R_{free}$	0.205 , 0.254 0.201 , 0.247	Depositor DCC
$R_{free}$ test set	3842 reflections (9.88%)	DCC
Wilson B-factor (Å <sup>2</sup> )	40.1	Xtriage
Anisotropy	0.062	Xtriage
Bulk solvent $k_{sol}$ (e/Å <sup>3</sup> ), $B_{sol}$ (Å <sup>2</sup> )	0.34 , 48.8	EDS
L-test for twinning <sup>2</sup>	$\langle  L  \rangle = 0.49$ , $\langle L^2 \rangle = 0.32$	Xtriage
Estimated twinning fraction	No twinning to report.	Xtriage
$F_o, F_c$ correlation	0.93	EDS
Total number of atoms	10087	wwPDB-VP
Average B, all atoms (Å <sup>2</sup> )	33.0	wwPDB-VP

Xtriage's analysis on translational NCS is as follows: *The largest off-origin peak in the Patterson function is 3.69% of the height of the origin peak. No significant pseudotranslation is detected.*

<sup>1</sup>Intensities estimated from amplitudes.

<sup>2</sup>Theoretical values of  $\langle |L| \rangle$ ,  $\langle L^2 \rangle$  for acentric reflections are 0.5, 0.333 respectively for untwinned datasets, and 0.375, 0.2 for perfectly twinned datasets.

## 5 Model quality [i](#)

### 5.1 Standard geometry [i](#)

Bond lengths and bond angles in the following residue types are not validated in this section: 2T5

The Z score for a bond length (or angle) is the number of standard deviations the observed value is removed from the expected value. A bond length (or angle) with  $|Z| > 5$  is considered an outlier worth inspection. RMSZ is the root-mean-square of all Z scores of the bond lengths (or angles).

Mol	Chain	Bond lengths		Bond angles	
		RMSZ	# Z  >5	RMSZ	# Z  >5
1	A	0.38	0/2484	0.62	0/3354
1	B	0.38	0/2477	0.62	0/3344
1	C	0.37	0/2477	0.63	0/3344
1	D	0.39	0/2477	0.63	0/3344
All	All	0.38	0/9915	0.63	0/13386

There are no bond length outliers.

There are no bond angle outliers.

There are no chirality outliers.

There are no planarity outliers.

### 5.2 Too-close contacts [i](#)

In the following table, the Non-H and H(model) columns list the number of non-hydrogen atoms and hydrogen atoms in the chain respectively. The H(added) column lists the number of hydrogen atoms added and optimized by MolProbity. The Clashes column lists the number of clashes within the asymmetric unit, whereas Symm-Clashes lists symmetry related clashes.

Mol	Chain	Non-H	H(model)	H(added)	Clashes	Symm-Clashes
1	A	2441	0	2491	76	0
1	B	2434	0	2482	74	0
1	C	2434	0	2482	60	0
1	D	2434	0	2482	61	0
2	A	18	0	8	1	0
2	B	18	0	8	1	0
2	C	18	0	8	1	0
2	D	18	0	8	0	0
3	A	37	0	0	0	0

*Continued on next page...*



*Continued from previous page...*

Mol	Chain	Non-H	H(model)	H(added)	Clashes	Symm-Clashes
3	B	71	0	0	4	0
3	C	81	0	0	2	0
3	D	83	0	0	3	0
All	All	10087	0	9969	251	0

The all-atom clashscore is defined as the number of clashes found per 1000 atoms (including hydrogen atoms). The all-atom clashscore for this structure is 13.

All (251) close contacts within the same asymmetric unit are listed below, sorted by their clash magnitude.

Atom-1	Atom-2	Interatomic distance (Å)	Clash overlap (Å)
1:A:267:ASN:ND2	1:A:270:SER:H	1.45	1.13
1:A:267:ASN:HD21	1:A:270:SER:H	1.06	0.93
1:D:212:ASN:ND2	1:D:214:GLY:H	1.72	0.88
1:A:267:ASN:HD21	1:A:270:SER:N	1.74	0.83
1:C:107:PRO:HG2	1:C:108:GLU:OE2	1.79	0.82
1:C:10:VAL:HG21	1:D:59:ILE:HA	1.62	0.82
1:D:212:ASN:HD22	1:D:214:GLY:H	1.29	0.80
1:D:154:GLN:HE21	1:D:158:ASN:HD22	1.25	0.80
1:C:10:VAL:HG13	1:D:57:TYR:O	1.80	0.80
1:A:182:ASN:HD22	1:A:198:LYS:HA	1.49	0.77
1:A:216:ALA:HA	1:A:219:PHE:CD2	2.21	0.76
1:C:182:ASN:HD22	1:C:198:LYS:HA	1.49	0.75
1:D:182:ASN:HD22	1:D:198:LYS:HA	1.52	0.74
1:D:212:ASN:HD22	1:D:212:ASN:C	1.90	0.74
1:A:13:LEU:HD23	1:A:38:CYS:SG	2.28	0.74
1:B:216:ALA:HA	1:B:219:PHE:CD2	2.22	0.73
1:B:328:LEU:O	1:B:332:GLU:HG3	1.88	0.73
1:A:32:GLN:HE21	1:A:32:GLN:HA	1.54	0.72
1:D:32:GLN:HE21	1:D:32:GLN:HA	1.55	0.72
1:A:267:ASN:ND2	1:A:270:SER:N	2.28	0.71
1:D:125:ASN:O	1:D:130:VAL:HG12	1.91	0.71
1:D:126:ILE:O	1:D:126:ILE:HD13	1.92	0.70
1:A:104:ILE:HD11	1:A:148:SER:HA	1.75	0.68
1:B:264:TYR:CZ	1:B:274:LYS:HD3	2.28	0.68
1:B:269:LYS:O	1:B:271:PRO:HD3	1.94	0.67
1:C:182:ASN:ND2	1:C:199:ASP:H	1.93	0.66
1:A:56:LEU:HD21	1:A:70:VAL:HG13	1.76	0.65
1:A:195:LEU:HD21	1:A:198:LYS:HG3	1.78	0.65
1:B:225:GLU:OE1	1:B:334:HIS:HE1	1.79	0.65
1:D:230:LYS:HE2	1:D:230:LYS:HA	1.77	0.65

*Continued on next page...*

*Continued from previous page...*

Atom-1	Atom-2	Interatomic distance (Å)	Clash overlap (Å)
1:A:141:LYS:NZ	1:A:143:SER:HB3	2.12	0.64
1:B:186:LEU:O	1:B:188:PRO:HD3	1.98	0.64
1:A:141:LYS:HZ3	1:A:143:SER:HB3	1.62	0.64
1:C:72:LYS:HG2	1:C:74:ASP:OD1	1.99	0.63
1:B:126:ILE:HD13	1:B:132:VAL:HG11	1.81	0.63
1:A:186:LEU:HB2	1:A:193:PHE:CE1	2.34	0.62
1:D:9:ASP:N	1:D:9:ASP:OD1	2.31	0.62
1:A:276:ARG:HG2	1:A:279:TYR:CZ	2.35	0.61
1:B:294:MET:SD	1:B:325:LEU:HD13	2.39	0.61
1:A:154:GLN:HE21	1:A:158:ASN:HD22	1.47	0.61
1:A:70:VAL:O	1:A:70:VAL:HG12	2.00	0.61
1:B:97:GLU:HG3	1:B:98:GLU:N	2.13	0.61
1:A:32:GLN:HA	1:A:32:GLN:NE2	2.16	0.61
1:A:32:GLN:NE2	1:C:18:MET:HG2	2.15	0.60
1:C:183:CYS:HB2	1:C:197:ASP:HB2	1.82	0.60
1:B:221:PRO:HB2	1:B:334:HIS:HD2	1.67	0.60
1:B:243:ARG:HH11	1:B:243:ARG:HG2	1.67	0.59
1:D:182:ASN:ND2	1:D:199:ASP:H	2.00	0.59
1:C:11:ASN:HD22	1:C:12:THR:H	1.48	0.59
1:C:154:GLN:HE21	1:C:158:ASN:HD22	1.50	0.59
1:A:125:ASN:O	1:A:130:VAL:HG12	2.03	0.59
1:B:117:PHE:CE2	1:B:119:PRO:HG3	2.36	0.59
1:A:276:ARG:HG2	1:A:279:TYR:OH	2.03	0.58
1:A:182:ASN:ND2	1:A:198:LYS:HA	2.17	0.58
1:A:267:ASN:C	1:A:267:ASN:HD22	2.06	0.58
1:B:143:SER:HB2	1:B:145:ASP:OD1	2.03	0.58
1:A:123:SER:O	1:A:126:ILE:HG13	2.05	0.57
1:A:166:LEU:HD13	1:A:249:VAL:HG12	1.86	0.57
1:B:117:PHE:HE2	1:B:119:PRO:HG3	1.68	0.57
1:B:191:GLY:HA3	1:D:191:GLY:HA3	1.85	0.57
1:D:282:ASN:ND2	1:D:302:VAL:HG12	2.19	0.57
1:A:125:ASN:OD1	1:B:258:TYR:HE2	1.89	0.56
1:C:81:VAL:HG12	1:C:85:LEU:HD12	1.87	0.56
1:C:274:LYS:O	1:C:313:ARG:NH1	2.39	0.55
1:B:158:ASN:HD22	1:B:158:ASN:N	2.02	0.55
1:C:182:ASN:HD21	1:C:199:ASP:H	1.54	0.55
1:A:173:LEU:C	1:A:173:LEU:HD23	2.27	0.55
1:D:283:PRO:O	1:D:287:VAL:HG23	2.06	0.55
1:B:146:GLU:HB2	3:B:340:HOH:O	2.06	0.55
1:B:264:TYR:CE1	1:B:274:LYS:HB3	2.42	0.54
1:C:182:ASN:ND2	1:C:198:LYS:HA	2.18	0.54

*Continued on next page...*

*Continued from previous page...*

Atom-1	Atom-2	Interatomic distance (Å)	Clash overlap (Å)
1:D:195:LEU:HD21	1:D:198:LYS:HG2	1.88	0.54
1:D:212:ASN:ND2	1:D:212:ASN:C	2.60	0.54
1:D:106:GLU:HG2	3:D:391:HOH:O	2.07	0.54
1:B:207:LYS:HB2	1:B:207:LYS:NZ	2.23	0.54
1:C:11:ASN:HD22	1:C:12:THR:N	2.05	0.53
1:A:297:THR:HB	1:A:315:PRO:HG2	1.91	0.53
1:D:32:GLN:NE2	1:D:32:GLN:HA	2.21	0.53
1:D:154:GLN:NE2	1:D:158:ASN:HD22	2.01	0.53
1:B:183:CYS:HB2	1:B:197:ASP:HB2	1.90	0.53
1:B:125:ASN:O	1:B:130:VAL:HG12	2.09	0.53
1:D:297:THR:HB	1:D:315:PRO:HG2	1.91	0.53
1:D:60:ALA:HB3	3:D:376:HOH:O	2.09	0.53
1:A:234:PRO:C	1:A:236:ASN:H	2.12	0.52
1:B:141:LYS:HE2	1:B:151:ASP:OD2	2.09	0.52
1:C:225:GLU:O	1:C:229:ARG:HG3	2.10	0.52
1:D:186:LEU:HB2	1:D:193:PHE:CE1	2.45	0.52
1:B:264:TYR:OH	1:B:274:LYS:HD3	2.10	0.51
1:B:318:LEU:HD12	1:B:318:LEU:C	2.30	0.51
1:C:9:ASP:HA	3:C:384:HOH:O	2.08	0.51
1:D:121:ASP:OD1	1:D:249:VAL:HG23	2.11	0.51
1:D:107:PRO:HA	1:D:110:ARG:HG3	1.93	0.51
1:D:318:LEU:C	1:D:318:LEU:HD12	2.31	0.51
1:D:216:ALA:HA	1:D:219:PHE:CD2	2.46	0.51
1:D:268:LYS:N	1:D:268:LYS:HD3	2.26	0.51
1:A:30:LEU:HD23	2:A:401:2T5:C15	2.41	0.51
1:A:125:ASN:OD1	1:B:258:TYR:CE2	2.65	0.50
1:A:296:THR:HG21	1:A:328:LEU:HD21	1.92	0.50
1:C:108:GLU:CD	1:C:108:GLU:H	2.14	0.50
1:D:19:GLU:HG2	1:D:23:LYS:HE3	1.93	0.50
1:B:243:ARG:NH1	1:B:243:ARG:HG2	2.26	0.50
1:B:261:ILE:HD11	1:B:317:ILE:CG2	2.42	0.50
1:A:93:VAL:HB	1:A:114:VAL:HG13	1.93	0.50
1:A:318:LEU:C	1:A:318:LEU:HD12	2.32	0.49
1:A:88:SER:O	1:A:89:PHE:HB2	2.12	0.49
1:A:279:TYR:OH	1:A:311:HIS:HD2	1.95	0.49
1:B:225:GLU:OE1	1:B:334:HIS:CE1	2.63	0.49
1:D:230:LYS:CA	1:D:230:LYS:HE2	2.40	0.49
1:A:123:SER:HA	1:A:126:ILE:HG12	1.95	0.49
1:A:145:ASP:OD2	1:A:145:ASP:N	2.45	0.49
1:C:48:VAL:HA	1:C:73:LEU:HD21	1.94	0.49
1:B:121:ASP:OD2	1:B:249:VAL:HG23	2.12	0.49

*Continued on next page...*

*Continued from previous page...*

Atom-1	Atom-2	Interatomic distance (Å)	Clash overlap (Å)
1:D:212:ASN:HB2	1:D:244:TYR:CE2	2.48	0.49
1:B:274:LYS:O	1:B:313:ARG:NH1	2.44	0.49
1:A:182:ASN:ND2	1:A:199:ASP:H	2.11	0.48
1:B:29:GLU:OE1	1:B:112:LYS:HE2	2.14	0.48
1:A:216:ALA:HA	1:A:219:PHE:CE2	2.49	0.48
1:D:186:LEU:O	1:D:188:PRO:HD3	2.13	0.48
1:D:121:ASP:N	1:D:133:GLY:O	2.37	0.48
1:A:191:GLY:HA3	1:C:191:GLY:HA3	1.95	0.48
1:B:283:PRO:O	1:B:287:VAL:HG23	2.13	0.48
1:B:90:ALA:C	1:B:111:GLY:HA3	2.34	0.48
1:B:74:ASP:N	1:B:74:ASP:OD2	2.42	0.48
1:D:254:ARG:HD2	3:D:355:HOH:O	2.14	0.48
1:A:267:ASN:HD22	1:A:270:SER:H	1.48	0.47
1:B:205:LYS:HE3	3:B:374:HOH:O	2.14	0.47
1:A:96:SER:HA	1:A:117:PHE:O	2.15	0.47
1:A:220:ASP:OD2	1:A:220:ASP:C	2.53	0.47
1:B:320:SER:HB2	1:B:323:ASP:OD1	2.15	0.47
1:C:316:VAL:C	1:C:317:ILE:HD12	2.34	0.47
1:C:73:LEU:HA	1:C:73:LEU:HD12	1.78	0.47
1:A:277:LEU:HA	1:A:281:CYS:HB2	1.97	0.47
1:C:90:ALA:C	1:C:111:GLY:HA3	2.35	0.47
1:B:22:ARG:HA	1:B:22:ARG:HD3	1.55	0.46
1:C:154:GLN:HB3	1:C:158:ASN:HD22	1.80	0.46
1:A:279:TYR:OH	1:A:311:HIS:CD2	2.69	0.46
1:C:145:ASP:O	1:C:146:GLU:C	2.52	0.46
1:C:121:ASP:N	1:C:133:GLY:O	2.36	0.46
1:A:90:ALA:C	1:A:111:GLY:HA3	2.36	0.46
1:C:294:MET:SD	1:C:325:LEU:HD13	2.55	0.46
1:A:310:ILE:HG13	1:A:311:HIS:ND1	2.31	0.46
1:D:212:ASN:ND2	1:D:214:GLY:N	2.53	0.46
1:C:32:GLN:OE1	1:C:32:GLN:HA	2.16	0.45
1:C:88:SER:O	1:C:89:PHE:HB2	2.16	0.45
1:A:128:CYS:HB3	1:B:258:TYR:CE2	2.51	0.45
1:A:254:ARG:NH1	1:A:254:ARG:HB3	2.30	0.45
1:B:108:GLU:HG3	3:B:359:HOH:O	2.15	0.45
1:B:277:LEU:HA	1:B:281:CYS:HB2	1.98	0.45
1:B:78:ASN:HB2	1:B:98:GLU:HG3	1.96	0.45
1:D:71:LYS:O	1:D:71:LYS:HG3	2.16	0.45
1:B:276:ARG:HD2	3:B:341:HOH:O	2.16	0.45
1:A:127:ASP:HB2	1:B:258:TYR:OH	2.16	0.45
1:C:264:TYR:CE1	1:C:274:LYS:HB3	2.51	0.45

*Continued on next page...*

*Continued from previous page...*

Atom-1	Atom-2	Interatomic distance (Å)	Clash overlap (Å)
1:A:183:CYS:HB2	1:A:197:ASP:HB2	1.98	0.45
1:A:320:SER:O	1:A:324:VAL:HG23	2.17	0.45
1:B:33:LEU:HD23	1:B:33:LEU:C	2.37	0.45
1:C:318:LEU:C	1:C:318:LEU:HD12	2.37	0.45
1:C:28:GLY:N	2:C:401:2T5:O3	2.44	0.45
1:C:125:ASN:HA	1:D:258:TYR:OH	2.17	0.45
1:D:182:ASN:ND2	1:D:198:LYS:HA	2.25	0.45
1:A:261:ILE:HD11	1:A:317:ILE:CG2	2.46	0.45
1:B:220:ASP:OD1	1:B:221:PRO:HD2	2.16	0.45
1:B:266:ALA:HB2	1:B:315:PRO:HG3	1.99	0.45
1:B:221:PRO:HB2	1:B:334:HIS:CD2	2.48	0.45
1:C:125:ASN:O	1:C:130:VAL:HG12	2.16	0.45
1:D:282:ASN:HD22	1:D:282:ASN:HA	1.65	0.45
1:C:267:ASN:C	1:C:269:LYS:H	2.20	0.45
1:A:212:ASN:HB2	1:A:244:TYR:CE2	2.53	0.44
1:C:267:ASN:C	1:C:269:LYS:N	2.70	0.44
1:A:22:ARG:HD3	3:C:404:HOH:O	2.16	0.44
1:B:317:ILE:HD12	1:B:317:ILE:N	2.33	0.44
1:D:145:ASP:O	1:D:146:GLU:C	2.53	0.44
1:B:227:ILE:CG2	1:B:231:LYS:HE3	2.48	0.44
1:D:276:ARG:N	1:D:276:ARG:HD3	2.33	0.44
1:A:97:GLU:HB2	1:A:279:TYR:CE2	2.53	0.44
1:A:258:TYR:CE2	1:B:128:CYS:HB3	2.53	0.43
1:B:158:ASN:N	1:B:158:ASN:ND2	2.65	0.43
1:C:274:LYS:HE3	1:C:274:LYS:HB2	1.80	0.43
1:A:267:ASN:C	1:A:267:ASN:ND2	2.70	0.43
1:D:74:ASP:OD2	1:D:120:LEU:HD23	2.18	0.43
1:D:187:ASP:OD1	1:D:189:ALA:HB3	2.19	0.43
1:B:130:VAL:HG22	1:B:131:SER:N	2.33	0.43
1:B:166:LEU:O	1:B:171:THR:HA	2.18	0.43
1:B:207:LYS:HB2	1:B:207:LYS:HZ1	1.84	0.43
1:C:37:LEU:HD21	1:C:136:PHE:CG	2.54	0.43
1:D:264:TYR:CE1	1:D:274:LYS:HB2	2.54	0.43
1:A:256:LEU:HD13	1:A:288:MET:CE	2.49	0.43
1:C:220:ASP:OD1	1:C:222:ALA:N	2.51	0.43
1:C:129:LEU:HD11	1:D:172:MET:HB2	2.00	0.43
1:A:73:LEU:HD12	1:A:73:LEU:HA	1.86	0.43
1:C:235:ASP:OD2	1:C:237:SER:HB3	2.19	0.43
1:C:282:ASN:HD22	1:C:282:ASN:HA	1.65	0.43
1:D:276:ARG:NE	1:D:280:GLU:OE1	2.47	0.43
1:A:90:ALA:HA	1:A:111:GLY:HA3	2.00	0.42

*Continued on next page...*

*Continued from previous page...*

Atom-1	Atom-2	Interatomic distance (Å)	Clash overlap (Å)
1:C:73:LEU:HD23	1:C:126:ILE:CD1	2.49	0.42
1:D:133:GLY:HA2	1:D:167:TYR:CD2	2.54	0.42
1:A:258:TYR:OH	1:B:127:ASP:HB2	2.19	0.42
1:C:129:LEU:HD22	1:D:170:ALA:HB3	2.00	0.42
1:D:276:ARG:CD	1:D:276:ARG:N	2.82	0.42
1:B:186:LEU:HB2	1:B:193:PHE:CE1	2.53	0.42
1:A:18:MET:HG2	1:C:32:GLN:OE1	2.18	0.42
1:A:13:LEU:HD22	1:A:173:LEU:HD13	2.00	0.42
1:A:56:LEU:HD13	1:A:56:LEU:O	2.19	0.42
1:B:207:LYS:CB	1:B:207:LYS:NZ	2.82	0.42
1:D:166:LEU:HD13	1:D:249:VAL:HG12	2.01	0.42
1:B:202:ILE:HG22	1:B:291:ALA:O	2.19	0.42
1:B:286:TYR:CZ	1:B:290:LYS:HE3	2.54	0.42
1:C:277:LEU:HA	1:C:281:CYS:HB2	2.01	0.42
1:A:172:MET:HG3	1:A:184:PHE:O	2.20	0.42
1:B:72:LYS:HB3	1:B:74:ASP:OD2	2.20	0.42
1:A:225:GLU:OE2	1:A:334:HIS:HE1	2.02	0.42
1:B:9:ASP:OD2	1:D:109:LYS:NZ	2.46	0.42
1:C:133:GLY:HA2	1:C:167:TYR:CD2	2.54	0.42
1:B:80:LEU:HD23	1:C:59:ILE:HG23	2.01	0.42
1:D:282:ASN:HD22	1:D:302:VAL:HG12	1.83	0.42
1:A:133:GLY:HA2	1:A:167:TYR:CD2	2.55	0.41
1:C:17:VAL:HG12	1:C:31:THR:HG23	2.02	0.41
1:B:269:LYS:HG2	1:B:270:SER:N	2.35	0.41
1:D:182:ASN:HD21	1:D:199:ASP:H	1.65	0.41
1:B:123:SER:O	1:B:126:ILE:HG22	2.20	0.41
1:B:80:LEU:CD2	1:C:59:ILE:HG23	2.50	0.41
1:B:88:SER:O	1:B:89:PHE:HB2	2.19	0.41
1:C:217:LYS:HA	1:D:232:PHE:CE2	2.55	0.41
1:C:121:ASP:OD2	1:C:249:VAL:HG23	2.20	0.41
1:A:152:ALA:O	1:A:278:LEU:HD11	2.20	0.41
1:C:139:TYR:OH	1:C:156:GLY:HA2	2.21	0.41
1:A:33:LEU:HD23	1:A:33:LEU:C	2.40	0.41
1:B:272:ASN:O	1:B:315:PRO:HD3	2.20	0.41
1:B:282:ASN:HA	1:B:282:ASN:HD22	1.64	0.41
1:B:30:LEU:HD23	2:B:401:2T5:C15	2.50	0.41
1:C:186:LEU:HB2	1:C:193:PHE:CE1	2.56	0.41
1:A:92:CYS:SG	1:A:93:VAL:HG23	2.61	0.41
1:D:37:LEU:HD21	1:D:136:PHE:CD1	2.55	0.41
1:C:268:LYS:HD3	1:C:268:LYS:C	2.41	0.41
1:C:317:ILE:N	1:C:317:ILE:HD12	2.36	0.41

*Continued on next page...*

Continued from previous page...

Atom-1	Atom-2	Interatomic distance (Å)	Clash overlap (Å)
1:D:233:PRO:HA	1:D:234:PRO:HD2	2.00	0.41
1:D:236:ASN:HA	1:D:236:ASN:HD22	1.57	0.41
1:D:261:ILE:HD11	1:D:317:ILE:CG2	2.51	0.41
1:D:277:LEU:HA	1:D:281:CYS:HB2	2.02	0.41
1:A:123:SER:HA	1:A:126:ILE:CG1	2.52	0.40
1:A:166:LEU:O	1:A:171:THR:HA	2.20	0.40
1:C:332:GLU:HA	1:C:335:SER:OG	2.21	0.40
1:A:192:GLU:HG3	1:C:39:THR:HG23	2.03	0.40
1:A:282:ASN:HB2	1:A:283:PRO:HD3	2.04	0.40
1:C:72:LYS:HE3	1:C:74:ASP:OD1	2.22	0.40
1:D:184:PHE:CD1	1:D:184:PHE:N	2.89	0.40
1:B:23:LYS:O	1:B:25:ARG:HG3	2.22	0.40
1:B:278:LEU:HD22	1:B:310:ILE:HA	2.04	0.40
1:C:313:ARG:HH11	1:C:313:ARG:HG3	1.85	0.40
1:B:20:GLU:OE2	1:B:23:LYS:NZ	2.47	0.40
1:B:233:PRO:HA	1:B:234:PRO:HD3	1.67	0.40

There are no symmetry-related clashes.

## 5.3 Torsion angles [i](#)

### 5.3.1 Protein backbone [i](#)

In the following table, the Percentiles column shows the percent Ramachandran outliers of the chain as a percentile score with respect to all X-ray entries followed by that with respect to entries of similar resolution.

The Analysed column shows the number of residues for which the backbone conformation was analysed, and the total number of residues.

Mol	Chain	Analysed	Favoured	Allowed	Outliers	Percentiles	
1	A	315/337 (94%)	305 (97%)	10 (3%)	0	100	100
1	B	314/337 (93%)	300 (96%)	13 (4%)	1 (0%)	44	77
1	C	314/337 (93%)	303 (96%)	11 (4%)	0	100	100
1	D	314/337 (93%)	307 (98%)	7 (2%)	0	100	100
All	All	1257/1348 (93%)	1215 (97%)	41 (3%)	1 (0%)	55	86

All (1) Ramachandran outliers are listed below:

Mol	Chain	Res	Type
1	B	143	SER

### 5.3.2 Protein sidechains ⓘ

In the following table, the Percentiles column shows the percent sidechain outliers of the chain as a percentile score with respect to all X-ray entries followed by that with respect to entries of similar resolution.

The Analysed column shows the number of residues for which the sidechain conformation was analysed, and the total number of residues.

Mol	Chain	Analysed	Rotameric	Outliers	Percentiles	
1	A	266/280 (95%)	250 (94%)	16 (6%)	22	54
1	B	265/280 (95%)	254 (96%)	11 (4%)	34	68
1	C	265/280 (95%)	251 (95%)	14 (5%)	26	59
1	D	265/280 (95%)	255 (96%)	10 (4%)	38	72
All	All	1061/1120 (95%)	1010 (95%)	51 (5%)	30	63

All (51) residues with a non-rotameric sidechain are listed below:

Mol	Chain	Res	Type
1	A	9	ASP
1	A	32	GLN
1	A	72	LYS
1	A	73	LEU
1	A	97	GLU
1	A	99	ASP
1	A	142	LYS
1	A	145	ASP
1	A	197	ASP
1	A	220	ASP
1	A	228	GLN
1	A	263	LEU
1	A	264	TYR
1	A	267	ASN
1	A	303	LEU
1	A	325	LEU
1	B	9	ASP
1	B	19	GLU
1	B	56	LEU
1	B	74	ASP
1	B	97	GLU

*Continued on next page...*



*Continued from previous page...*

Mol	Chain	Res	Type
1	B	125	ASN
1	B	127	ASP
1	B	146	GLU
1	B	197	ASP
1	B	276	ARG
1	B	325	LEU
1	C	10	VAL
1	C	11	ASN
1	C	19	GLU
1	C	145	ASP
1	C	173	LEU
1	C	220	ASP
1	C	230	LYS
1	C	264	TYR
1	C	268	LYS
1	C	269	LYS
1	C	276	ARG
1	C	303	LEU
1	C	313	ARG
1	C	325	LEU
1	D	126	ILE
1	D	197	ASP
1	D	212	ASN
1	D	228	GLN
1	D	236	ASN
1	D	263	LEU
1	D	264	TYR
1	D	276	ARG
1	D	290	LYS
1	D	325	LEU

Some sidechains can be flipped to improve hydrogen bonding and reduce clashes. All (36) such sidechains are listed below:

Mol	Chain	Res	Type
1	A	32	GLN
1	A	35	ASN
1	A	78	ASN
1	A	154	GLN
1	A	182	ASN
1	A	267	ASN
1	A	282	ASN
1	A	311	HIS

*Continued on next page...*

*Continued from previous page...*

Mol	Chain	Res	Type
1	A	334	HIS
1	B	32	GLN
1	B	35	ASN
1	B	55	HIS
1	B	125	ASN
1	B	154	GLN
1	B	158	ASN
1	B	182	ASN
1	B	228	GLN
1	B	272	ASN
1	B	282	ASN
1	B	334	HIS
1	C	11	ASN
1	C	35	ASN
1	C	125	ASN
1	C	154	GLN
1	C	158	ASN
1	C	182	ASN
1	C	282	ASN
1	D	32	GLN
1	D	35	ASN
1	D	125	ASN
1	D	154	GLN
1	D	182	ASN
1	D	212	ASN
1	D	228	GLN
1	D	236	ASN
1	D	282	ASN

### 5.3.3 RNA ⓘ

There are no RNA molecules in this entry.

### 5.4 Non-standard residues in protein, DNA, RNA chains ⓘ

There are no non-standard protein/DNA/RNA residues in this entry.

### 5.5 Carbohydrates ⓘ

There are no carbohydrates in this entry.

## 5.6 Ligand geometry

4 ligands are modelled in this entry.

In the following table, the Counts columns list the number of bonds (or angles) for which Mogul statistics could be retrieved, the number of bonds (or angles) that are observed in the model and the number of bonds (or angles) that are defined in the Chemical Component Dictionary. The Link column lists molecule types, if any, to which the group is linked. The Z score for a bond length (or angle) is the number of standard deviations the observed value is removed from the expected value. A bond length (or angle) with  $|Z| > 2$  is considered an outlier worth inspection. RMSZ is the root-mean-square of all Z scores of the bond lengths (or angles).

Mol	Type	Chain	Res	Link	Bond lengths			Bond angles		
					Counts	RMSZ	# $ Z  > 2$	Counts	RMSZ	# $ Z  > 2$
2	2T5	A	401	-	17,20,20	1.42	3 (17%)	18,30,30	3.55	3 (16%)
2	2T5	B	401	-	17,20,20	1.65	5 (29%)	18,30,30	3.48	2 (11%)
2	2T5	C	401	-	17,20,20	1.60	5 (29%)	18,30,30	3.48	2 (11%)
2	2T5	D	401	-	17,20,20	1.48	4 (23%)	18,30,30	3.51	2 (11%)

In the following table, the Chirals column lists the number of chiral outliers, the number of chiral centers analysed, the number of these observed in the model and the number defined in the Chemical Component Dictionary. Similar counts are reported in the Torsion and Rings columns. '-' means no outliers of that kind were identified.

Mol	Type	Chain	Res	Link	Chirals	Torsions	Rings
2	2T5	A	401	-	-	0/6/14/14	0/3/3/3
2	2T5	B	401	-	-	0/6/14/14	0/3/3/3
2	2T5	C	401	-	-	0/6/14/14	0/3/3/3
2	2T5	D	401	-	-	0/6/14/14	0/3/3/3

All (17) bond length outliers are listed below:

Mol	Chain	Res	Type	Atoms	Z	Observed(Å)	Ideal(Å)
2	C	401	2T5	C8-C7	-3.47	1.35	1.40
2	B	401	2T5	C8-C7	-3.25	1.36	1.40
2	B	401	2T5	O6-C5	-2.72	1.39	1.43
2	D	401	2T5	C8-C7	-2.61	1.36	1.40
2	A	401	2T5	C8-C7	-2.50	1.37	1.40
2	B	401	2T5	C8-C9	-2.50	1.36	1.41
2	C	401	2T5	C8-C9	-2.40	1.37	1.41
2	C	401	2T5	O6-C5	-2.37	1.39	1.43
2	D	401	2T5	O6-C5	-2.18	1.40	1.43
2	A	401	2T5	C13-C9	2.24	1.56	1.51
2	C	401	2T5	C17-S16	2.46	1.76	1.68

*Continued on next page...*

*Continued from previous page...*

Mol	Chain	Res	Type	Atoms	Z	Observed(Å)	Ideal(Å)
2	C	401	2T5	C13-C9	2.49	1.56	1.51
2	A	401	2T5	C17-S16	2.49	1.76	1.68
2	B	401	2T5	C17-S16	2.49	1.76	1.68
2	D	401	2T5	C17-S16	2.57	1.77	1.68
2	D	401	2T5	C13-C9	2.57	1.56	1.51
2	B	401	2T5	C13-C9	2.57	1.56	1.51

All (9) bond angle outliers are listed below:

Mol	Chain	Res	Type	Atoms	Z	Observed(°)	Ideal(°)
2	A	401	2T5	C14-C13-C9	-7.38	95.21	103.04
2	B	401	2T5	C14-C13-C9	-7.37	95.22	103.04
2	C	401	2T5	C14-C13-C9	-7.34	95.25	103.04
2	D	401	2T5	C14-C13-C9	-7.26	95.34	103.04
2	A	401	2T5	C13-C9-C8	2.05	113.77	109.34
2	C	401	2T5	C13-C14-C15	12.19	115.70	109.55
2	B	401	2T5	C13-C14-C15	12.19	115.70	109.55
2	D	401	2T5	C13-C14-C15	12.19	115.70	109.55
2	A	401	2T5	C13-C14-C15	12.32	115.77	109.55

There are no chirality outliers.

There are no torsion outliers.

There are no ring outliers.

3 monomers are involved in 3 short contacts:

Mol	Chain	Res	Type	Clashes	Symm-Clashes
2	A	401	2T5	1	0
2	B	401	2T5	1	0
2	C	401	2T5	1	0

## 5.7 Other polymers [i](#)

There are no such residues in this entry.

## 5.8 Polymer linkage issues [i](#)

There are no chain breaks in this entry.

## 6 Fit of model and data [i](#)

### 6.1 Protein, DNA and RNA chains [i](#)

In the following table, the column labelled ‘#RSRZ> 2’ contains the number (and percentage) of RSRZ outliers, followed by percent RSRZ outliers for the chain as percentile scores relative to all X-ray entries and entries of similar resolution. The OWAB column contains the minimum, median, 95<sup>th</sup> percentile and maximum values of the occupancy-weighted average B-factor per residue. The column labelled ‘Q< 0.9’ lists the number of (and percentage) of residues with an average occupancy less than 0.9.

Mol	Chain	Analysed	<RSRZ>	#RSRZ>2	OWAB(Å <sup>2</sup> )	Q<0.9
1	A	319/337 (94%)	-0.17	4 (1%) 77 71	20, 33, 55, 72	0
1	B	318/337 (94%)	-0.41	2 (0%) 89 86	20, 31, 53, 74	0
1	C	318/337 (94%)	-0.33	3 (0%) 84 79	17, 30, 49, 72	0
1	D	318/337 (94%)	-0.47	1 (0%) 93 92	19, 29, 46, 67	0
All	All	1273/1348 (94%)	-0.35	10 (0%) 86 81	17, 31, 51, 74	0

All (10) RSRZ outliers are listed below:

Mol	Chain	Res	Type	RSRZ
1	A	268	LYS	3.1
1	B	236	ASN	3.1
1	C	235	ASP	3.0
1	A	215	TYR	2.7
1	A	125	ASN	2.5
1	A	269	LYS	2.4
1	B	9	ASP	2.3
1	C	125	ASN	2.2
1	D	71	LYS	2.2
1	C	236	ASN	2.0

### 6.2 Non-standard residues in protein, DNA, RNA chains [i](#)

There are no non-standard protein/DNA/RNA residues in this entry.

### 6.3 Carbohydrates [i](#)

There are no carbohydrates in this entry.

## 6.4 Ligands [i](#)

In the following table, the Atoms column lists the number of modelled atoms in the group and the number defined in the chemical component dictionary. LLDF column lists the quality of electron density of the group with respect to its neighbouring residues in protein, DNA or RNA chains. The B-factors column lists the minimum, median, 95<sup>th</sup> percentile and maximum values of B factors of atoms in the group. The column labelled 'Q< 0.9' lists the number of atoms with occupancy less than 0.9.

Mol	Type	Chain	Res	Atoms	RSCC	RSR	LLDF	B-factors(Å <sup>2</sup> )	Q<0.9
2	2T5	B	401	18/18	0.94	0.20	1.41	38,51,59,67	0
2	2T5	C	401	18/18	0.94	0.19	0.52	39,52,61,67	0
2	2T5	A	401	18/18	0.94	0.17	0.25	35,47,58,64	0
2	2T5	D	401	18/18	0.95	0.16	-0.04	31,43,54,62	0

## 6.5 Other polymers [i](#)

There are no such residues in this entry.