



# Full wwPDB X-ray Structure Validation Report ⓘ

Feb 14, 2017 – 11:46 am GMT

PDB ID : 4KJG  
Title : Structure of Rat Intestinal Alkaline Phosphatase expressed in insect cell  
Authors : Ghosh, K.; Anumula, R.K.; Lakshmaiah, B.K.  
Deposited on : 2013-05-03  
Resolution : 2.38 Å(reported)

This is a Full wwPDB X-ray Structure Validation Report for a publicly released PDB entry.

We welcome your comments at [validation@mail.wwpdb.org](mailto:validation@mail.wwpdb.org)

A user guide is available at

<http://wwpdb.org/validation/2016/XrayValidationReportHelp>

with specific help available everywhere you see the ⓘ symbol.

---

The following versions of software and data (see [references ⓘ](#)) were used in the production of this report:

MolProbity : 4.02b-467  
Mogul : 1.7.2 (RC1), CSD as538be (2017)  
Xtriage (Phenix) : 1.9-1692  
EDS : trunk28620  
Percentile statistics : 20161228.v01 (using entries in the PDB archive December 28th 2016)  
Refmac : 5.8.0135  
CCP4 : 6.5.0  
Ideal geometry (proteins) : Engh & Huber (2001)  
Ideal geometry (DNA, RNA) : Parkinson et al. (1996)  
Validation Pipeline (wwPDB-VP) : recalc28949

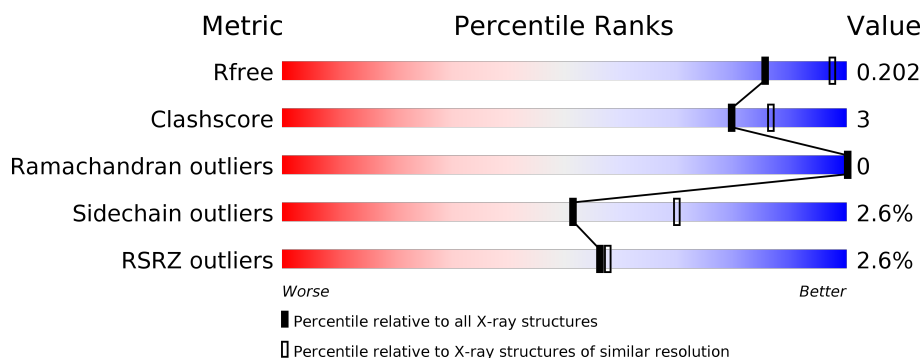
# 1 Overall quality at a glance

The following experimental techniques were used to determine the structure:

*X-RAY DIFFRACTION*

The reported resolution of this entry is 2.38 Å.

Percentile scores (ranging between 0-100) for global validation metrics of the entry are shown in the following graphic. The table shows the number of entries on which the scores are based.



Metric	Whole archive (#Entries)	Similar resolution (#Entries, resolution range(Å))
$R_{free}$	100719	4388 (2.40-2.36)
Clashscore	112137	4984 (2.40-2.36)
Ramachandran outliers	110173	4907 (2.40-2.36)
Sidechain outliers	110143	4909 (2.40-2.36)
RSRZ outliers	101464	4423 (2.40-2.36)

The table below summarises the geometric issues observed across the polymeric chains and their fit to the electron density. The red, orange, yellow and green segments on the lower bar indicate the fraction of residues that contain outliers for  $\geq 3$ , 2, 1 and 0 types of geometric quality criteria. A grey segment represents the fraction of residues that are not modelled. The numeric value for each fraction is indicated below the corresponding segment, with a dot representing fractions  $\leq 5\%$ . The upper red bar (where present) indicates the fraction of residues that have poor fit to the electron density. The numeric value is given above the bar.

Mol	Chain	Length	Quality of chain
1	A	488	<div> <div>2%</div> <div> <div></div> <div>91%</div> <div>7% •</div> </div> </div>
1	B	488	<div> <div>3%</div> <div> <div></div> <div>90%</div> <div>8% ••</div> </div> </div>

The following table lists non-polymeric compounds, carbohydrate monomers and non-standard residues in protein, DNA, RNA chains that are outliers for geometric or electron-density-fit criteria:

Mol	Type	Chain	Res	Chirality	Geometry	Clashes	Electron density
3	MG	B	1003	-	-	-	X
4	4NP	A	1006	-	-	-	X
4	4NP	B	1006	-	X	-	X
5	NAG	B	1010	-	-	-	X

## 2 Entry composition

There are 8 unique types of molecules in this entry. The entry contains 7889 atoms, of which 0 are hydrogens and 0 are deuteriums.

In the tables below, the ZeroOcc column contains the number of atoms modelled with zero occupancy, the AltConf column contains the number of residues with at least one atom in alternate conformation and the Trace column contains the number of residues modelled with at most 2 atoms.

- Molecule 1 is a protein called Intestinal-type alkaline phosphatase 1.

Mol	Chain	Residues	Atoms					ZeroOcc	AltConf	Trace
1	A	486	Total	C	N	O	S	0	0	0
			3686	2312	644	713	17			
1	B	484	Total	C	N	O	S	0	0	0
			3657	2297	638	705	17			

There are 12 discrepancies between the modelled and reference sequences:

Chain	Residue	Modelled	Actual	Comment	Reference
A	483	HIS	-	EXPRESSION TAG	UNP P15693
A	484	HIS	-	EXPRESSION TAG	UNP P15693
A	485	HIS	-	EXPRESSION TAG	UNP P15693
A	486	HIS	-	EXPRESSION TAG	UNP P15693
A	487	HIS	-	EXPRESSION TAG	UNP P15693
A	488	HIS	-	EXPRESSION TAG	UNP P15693
B	483	HIS	-	EXPRESSION TAG	UNP P15693
B	484	HIS	-	EXPRESSION TAG	UNP P15693
B	485	HIS	-	EXPRESSION TAG	UNP P15693
B	486	HIS	-	EXPRESSION TAG	UNP P15693
B	487	HIS	-	EXPRESSION TAG	UNP P15693
B	488	HIS	-	EXPRESSION TAG	UNP P15693

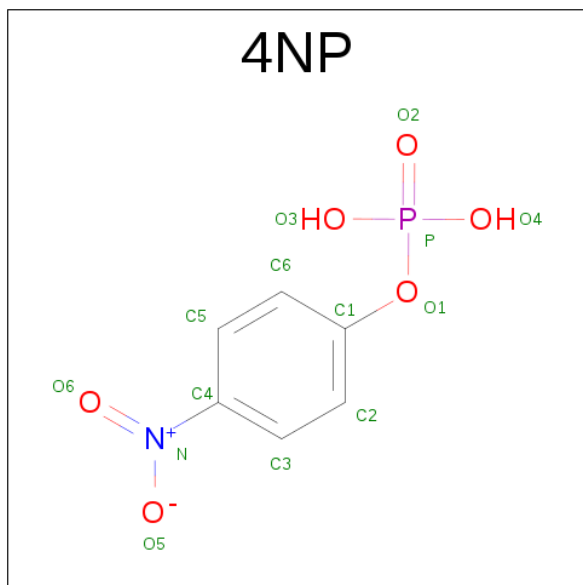
- Molecule 2 is ZINC ION (three-letter code: ZN) (formula: Zn).

Mol	Chain	Residues	Atoms		ZeroOcc	AltConf
2	B	2	Total	Zn	0	0
			2	2		
2	A	2	Total	Zn	0	0
			2	2		

- Molecule 3 is MAGNESIUM ION (three-letter code: MG) (formula: Mg).

Mol	Chain	Residues	Atoms		ZeroOcc	AltConf
3	B	3	Total	Mg	0	0
			3	3		
3	A	3	Total	Mg	0	0
			3	3		

- Molecule 4 is 4-NITROPHENYL PHOSPHATE (three-letter code: 4NP) (formula:  $C_6H_5NO_6P$ ).



Mol	Chain	Residues	Atoms				ZeroOcc	AltConf
4	A	1	Total	C	N	O	0	0
			10	6	1	3		
4	B	1	Total	C	N	O	0	0
			10	6	1	3		

- Molecule 5 is SUGAR (N-ACETYL-D-GLUCOSAMINE) (three-letter code: NAG) (formula:  $C_8H_{15}NO_6$ ).



Mol	Chain	Residues	Atoms				ZeroOcc	AltConf
5	A	1	Total	C	N	O	0	0
			14	8	1	5		
5	B	1	Total	C	N	O	0	0
			14	8	1	5		

- Molecule 6 is a polymer of unknown type called SUGAR (4-MER).

Mol	Chain	Residues	Atoms				ZeroOcc	AltConf
6	A	4	Total	C	N	O	0	0
			56	32	4	20		

- Molecule 7 is a polymer of unknown type called SUGAR (3-MER).

Mol	Chain	Residues	Atoms				ZeroOcc	AltConf
7	B	3	Total	C	N	O	0	0
			42	24	3	15		

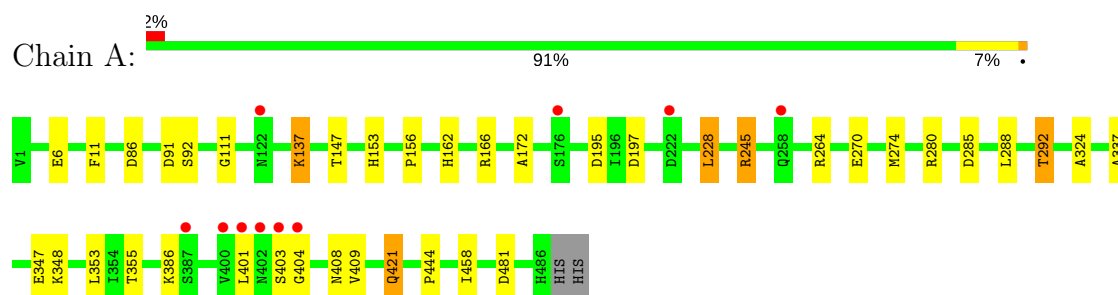
- Molecule 8 is water.

Mol	Chain	Residues	Atoms		ZeroOcc	AltConf
8	A	192	Total	O	0	0
			192	192		
8	B	198	Total	O	0	0
			198	198		

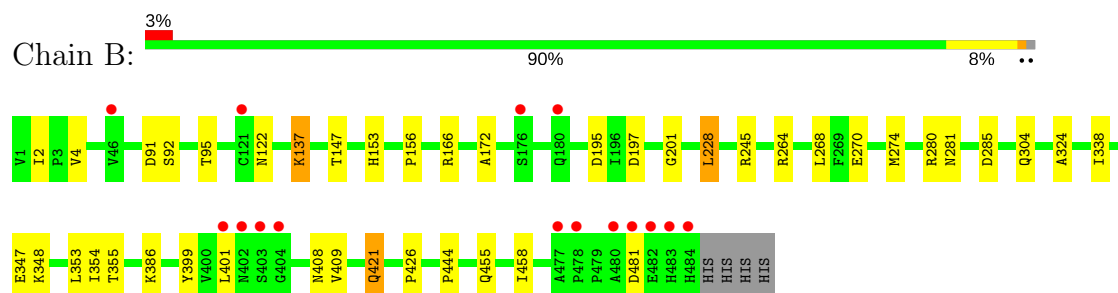
### 3 Residue-property plots

These plots are drawn for all protein, RNA and DNA chains in the entry. The first graphic for a chain summarises the proportions of the various outlier classes displayed in the second graphic. The second graphic shows the sequence view annotated by issues in geometry and electron density. Residues are color-coded according to the number of geometric quality criteria for which they contain at least one outlier: green = 0, yellow = 1, orange = 2 and red = 3 or more. A red dot above a residue indicates a poor fit to the electron density ( $RSRZ > 2$ ). Stretches of 2 or more consecutive residues without any outlier are shown as a green connector. Residues present in the sample, but not in the model, are shown in grey.

#### • Molecule 1: Intestinal-type alkaline phosphatase 1



#### • Molecule 1: Intestinal-type alkaline phosphatase 1



## 4 Data and refinement statistics

Property	Value	Source
Space group	P 21 21 21	Depositor
Cell constants a, b, c, $\alpha$ , $\beta$ , $\gamma$	90.31Å 167.17Å 71.84Å 90.00° 90.00° 90.00°	Depositor
Resolution (Å)	47.42 – 2.38 47.42 – 2.38	Depositor EDS
% Data completeness (in resolution range)	99.0 (47.42-2.38) 99.1 (47.42-2.38)	Depositor EDS
$R_{merge}$	0.17	Depositor
$R_{sym}$	(Not available)	Depositor
$\langle I/\sigma(I) \rangle$ <sup>1</sup>	2.31 (at 2.39Å)	Xtriage
Refinement program	BUSTER 2.11.1	Depositor
R, $R_{free}$	0.164 , 0.204 0.163 , 0.202	Depositor DCC
$R_{free}$ test set	2224 reflections (5.33%)	DCC
Wilson B-factor (Å <sup>2</sup> )	21.0	Xtriage
Anisotropy	0.613	Xtriage
Bulk solvent $k_{sol}$ (e/Å <sup>3</sup> ), $B_{sol}$ (Å <sup>2</sup> )	0.38 , 45.9	EDS
L-test for twinning <sup>2</sup>	$\langle  L  \rangle = 0.49$ , $\langle L^2 \rangle = 0.32$	Xtriage
Estimated twinning fraction	No twinning to report.	Xtriage
$F_o, F_c$ correlation	0.95	EDS
Total number of atoms	7889	wwPDB-VP
Average B, all atoms (Å <sup>2</sup> )	23.0	wwPDB-VP

Xtriage's analysis on translational NCS is as follows: *The largest off-origin peak in the Patterson function is 3.35% of the height of the origin peak. No significant pseudotranslation is detected.*

<sup>1</sup>Intensities estimated from amplitudes.

<sup>2</sup>Theoretical values of  $\langle |L| \rangle$ ,  $\langle L^2 \rangle$  for acentric reflections are 0.5, 0.333 respectively for untwinned datasets, and 0.375, 0.2 for perfectly twinned datasets.



## 5 Model quality

### 5.1 Standard geometry

Bond lengths and bond angles in the following residue types are not validated in this section: 4NP, MG, ZN, NAG

The Z score for a bond length (or angle) is the number of standard deviations the observed value is removed from the expected value. A bond length (or angle) with  $|Z| > 5$  is considered an outlier worth inspection. RMSZ is the root-mean-square of all Z scores of the bond lengths (or angles).

Mol	Chain	Bond lengths		Bond angles	
		RMSZ	# Z  >5	RMSZ	# Z  >5
1	A	0.49	0/3772	0.67	0/5133
1	B	0.49	0/3740	0.65	0/5087
All	All	0.49	0/7512	0.66	0/10220

There are no bond length outliers.

There are no bond angle outliers.

There are no chirality outliers.

There are no planarity outliers.

### 5.2 Too-close contacts

In the following table, the Non-H and H(model) columns list the number of non-hydrogen atoms and hydrogen atoms in the chain respectively. The H(added) column lists the number of hydrogen atoms added and optimized by MolProbity. The Clashes column lists the number of clashes within the asymmetric unit, whereas Symm-Clashes lists symmetry related clashes.

Mol	Chain	Non-H	H(model)	H(added)	Clashes	Symm-Clashes
1	A	3686	0	3536	22	0
1	B	3657	0	3532	24	0
2	A	2	0	0	0	0
2	B	2	0	0	0	0
3	A	3	0	0	0	0
3	B	3	0	0	0	0
4	A	10	0	4	1	0
4	B	10	0	4	1	0
5	A	14	0	13	0	0
5	B	14	0	13	1	0
6	A	56	0	49	1	0

*Continued on next page...*

*Continued from previous page...*

Mol	Chain	Non-H	H(model)	H(added)	Clashes	Symm-Clashes
7	B	42	0	37	4	0
8	A	192	0	0	1	0
8	B	198	0	0	0	0
All	All	7889	0	7188	46	0

The all-atom clashscore is defined as the number of clashes found per 1000 atoms (including hydrogen atoms). The all-atom clashscore for this structure is 3.

All (46) close contacts within the same asymmetric unit are listed below, sorted by their clash magnitude.

Atom-1	Atom-2	Interatomic distance (Å)	Clash overlap (Å)
1:B:281:ASN:CG	7:B:1007:NAG:C1	2.40	0.88
7:B:1009:NAG:O3	7:B:1009:NAG:H82	1.90	0.70
1:B:386:LYS:HG3	5:B:1010:NAG:H82	1.76	0.68
1:A:353:LEU:HD12	1:A:458:ILE:HG23	1.83	0.61
1:B:280:ARG:HG3	1:B:285:ASP:HB2	1.83	0.60
1:B:353:LEU:HD12	1:B:458:ILE:HG23	1.84	0.59
1:B:281:ASN:OD1	7:B:1007:NAG:C1	2.51	0.58
1:B:348:LYS:HD3	1:B:481:ASP:HA	1.86	0.58
1:A:404:GLY:O	1:B:401:LEU:HD21	2.04	0.57
1:A:280:ARG:HG3	1:A:285:ASP:HB2	1.87	0.56
1:B:92:SER:OG	4:B:1006:4NP:O5	2.24	0.56
1:A:172:ALA:HA	1:A:228:LEU:HD22	1.89	0.55
1:A:292:THR:HG21	1:A:337:ALA:HB1	1.88	0.54
1:B:172:ALA:HA	1:B:228:LEU:HD22	1.89	0.53
1:A:137:LYS:HD3	1:A:195:ASP:HB3	1.90	0.53
1:B:137:LYS:HD3	1:B:195:ASP:HB3	1.91	0.52
1:B:95:THR:HG22	1:B:455:GLN:HE22	1.74	0.52
1:A:111:GLY:O	1:A:162:HIS:HD2	1.93	0.51
1:B:197:ASP:HA	1:B:264:ARG:HG2	1.93	0.51
1:A:324:ALA:H	1:A:421:GLN:HE22	1.58	0.51
1:A:92:SER:OG	4:A:1006:4NP:O5	2.29	0.51
1:A:347:GLU:O	1:A:444:PRO:HD3	2.11	0.51
1:A:288:LEU:O	1:A:292:THR:HG23	2.11	0.50
1:A:197:ASP:HA	1:A:264:ARG:HG2	1.96	0.48
1:B:324:ALA:H	1:B:421:GLN:HE22	1.59	0.48
1:A:355:THR:HG21	1:A:458:ILE:HD13	1.95	0.48
1:B:355:THR:HG21	1:B:458:ILE:HD13	1.96	0.47
1:A:270:GLU:HG3	1:A:274:MET:HA	1.97	0.47
1:B:386:LYS:HG2	1:B:408:ASN:HB2	1.98	0.45
6:A:1009:NAG:O3	6:A:1011:NAG:H82	2.16	0.45

*Continued on next page...*

Continued from previous page...

Atom-1	Atom-2	Interatomic distance (Å)	Clash overlap (Å)
1:B:270:GLU:HG3	1:B:274:MET:HA	1.98	0.44
1:A:348:LYS:HD3	1:A:481:ASP:HA	1.99	0.44
1:B:201:GLY:O	1:B:268:LEU:HA	2.18	0.44
1:B:399:TYR:CD2	1:B:426:PRO:HB3	2.53	0.44
1:A:245:ARG:NH2	8:A:1246:HOH:O	2.51	0.43
1:A:386:LYS:HG2	1:A:408:ASN:HB2	2.00	0.43
1:B:421:GLN:H	1:B:421:GLN:NE2	2.17	0.43
1:B:281:ASN:ND2	7:B:1007:NAG:C2	2.70	0.43
1:B:147:THR:HG21	1:B:156:PRO:HG3	1.99	0.43
1:A:401:LEU:O	1:A:403:SER:N	2.53	0.42
1:A:147:THR:HG21	1:A:156:PRO:HG3	2.01	0.42
1:A:421:GLN:NE2	1:A:421:GLN:H	2.16	0.42
1:A:86:ASP:HB3	1:B:2:ILE:HG12	2.01	0.41
1:B:338:ILE:HD13	1:B:354:ILE:HD13	2.01	0.41
1:B:347:GLU:O	1:B:444:PRO:HD3	2.20	0.41
1:A:6:GLU:HG2	1:A:11:PHE:CE2	2.56	0.40

There are no symmetry-related clashes.

## 5.3 Torsion angles ⓘ

### 5.3.1 Protein backbone ⓘ

In the following table, the Percentiles column shows the percent Ramachandran outliers of the chain as a percentile score with respect to all X-ray entries followed by that with respect to entries of similar resolution.

The Analysed column shows the number of residues for which the backbone conformation was analysed, and the total number of residues.

Mol	Chain	Analysed	Favoured	Allowed	Outliers	Percentiles	
1	A	484/488 (99%)	472 (98%)	12 (2%)	0	100	100
1	B	482/488 (99%)	473 (98%)	9 (2%)	0	100	100
All	All	966/976 (99%)	945 (98%)	21 (2%)	0	100	100

There are no Ramachandran outliers to report.

### 5.3.2 Protein sidechains ⓘ

In the following table, the Percentiles column shows the percent sidechain outliers of the chain as a percentile score with respect to all X-ray entries followed by that with respect to entries of similar resolution.

The Analysed column shows the number of residues for which the sidechain conformation was analysed, and the total number of residues.

Mol	Chain	Analysed	Rotameric	Outliers	Percentiles	
1	A	385/394 (98%)	376 (98%)	9 (2%)	56	73
1	B	382/394 (97%)	371 (97%)	11 (3%)	48	66
All	All	767/788 (97%)	747 (97%)	20 (3%)	51	70

All (20) residues with a non-rotameric sidechain are listed below:

Mol	Chain	Res	Type
1	A	91	ASP
1	A	137	LYS
1	A	153	HIS
1	A	166	ARG
1	A	228	LEU
1	A	245	ARG
1	A	292	THR
1	A	409	VAL
1	A	421	GLN
1	B	4	VAL
1	B	91	ASP
1	B	122	ASN
1	B	137	LYS
1	B	153	HIS
1	B	166	ARG
1	B	228	LEU
1	B	245	ARG
1	B	304	GLN
1	B	409	VAL
1	B	421	GLN

Some sidechains can be flipped to improve hydrogen bonding and reduce clashes. All (9) such sidechains are listed below:

Mol	Chain	Res	Type
1	A	162	HIS
1	A	381	ASN

*Continued on next page...*

*Continued from previous page...*

Mol	Chain	Res	Type
1	A	383	GLN
1	A	421	GLN
1	B	242	GLN
1	B	279	ASN
1	B	381	ASN
1	B	421	GLN
1	B	455	GLN

### 5.3.3 RNA ⓘ

There are no RNA molecules in this entry.

### 5.4 Non-standard residues in protein, DNA, RNA chains ⓘ

There are no non-standard protein/DNA/RNA residues in this entry.

### 5.5 Carbohydrates ⓘ

7 carbohydrates are modelled in this entry.

In the following table, the Counts columns list the number of bonds (or angles) for which Mogul statistics could be retrieved, the number of bonds (or angles) that are observed in the model and the number of bonds (or angles) that are defined in the chemical component dictionary. The Link column lists molecule types, if any, to which the group is linked. The Z score for a bond length (or angle) is the number of standard deviations the observed value is removed from the expected value. A bond length (or angle) with  $|Z| > 2$  is considered an outlier worth inspection. RMSZ is the root-mean-square of all Z scores of the bond lengths (or angles).

Mol	Type	Chain	Res	Link	Bond lengths			Bond angles		
					Counts	RMSZ	$\# Z  > 2$	Counts	RMSZ	$\# Z  > 2$
6	NAG	A	1008	1,6	14,14,15	0.74	0	15,19,21	1.15	1 (6%)
6	NAG	A	1009	6	14,14,15	0.77	0	15,19,21	2.78	6 (40%)
6	NAG	A	1010	6	14,14,15	1.40	1 (7%)	15,19,21	5.69	6 (40%)
6	NAG	A	1011	6	14,14,15	0.99	0	15,19,21	2.92	6 (40%)
7	NAG	B	1007	1,7	14,14,15	0.78	1 (7%)	15,19,21	2.34	6 (40%)
7	NAG	B	1008	7	14,14,15	1.03	1 (7%)	15,19,21	4.05	8 (53%)
7	NAG	B	1009	7	14,14,15	0.94	0	15,19,21	2.16	6 (40%)

In the following table, the Chirals column lists the number of chiral outliers, the number of chiral centers analysed, the number of these observed in the model and the number defined in the chemical

component dictionary. Similar counts are reported in the Torsion and Rings columns. '-' means no outliers of that kind were identified.

Mol	Type	Chain	Res	Link	Chirals	Torsions	Rings
6	NAG	A	1008	1,6	-	0/6/23/26	0/1/1/1
6	NAG	A	1009	6	-	0/6/23/26	0/1/1/1
6	NAG	A	1010	6	-	0/6/23/26	0/1/1/1
6	NAG	A	1011	6	-	0/6/23/26	0/1/1/1
7	NAG	B	1007	1,7	-	0/6/23/26	0/1/1/1
7	NAG	B	1008	7	-	0/6/23/26	0/1/1/1
7	NAG	B	1009	7	-	0/6/23/26	0/1/1/1

All (3) bond length outliers are listed below:

Mol	Chain	Res	Type	Atoms	Z	Observed(Å)	Ideal(Å)
7	B	1007	NAG	O5-C1	-2.03	1.40	1.43
7	B	1008	NAG	C1-C2	2.37	1.55	1.52
6	A	1010	NAG	C1-C2	4.19	1.58	1.52

All (39) bond angle outliers are listed below:

Mol	Chain	Res	Type	Atoms	Z	Observed(°)	Ideal(°)
7	B	1007	NAG	O4-C4-C3	-4.41	100.77	110.36
7	B	1007	NAG	O5-C1-C2	-3.72	106.29	111.47
7	B	1007	NAG	C2-N2-C7	-3.60	117.70	122.94
6	A	1011	NAG	O7-C7-C8	-3.59	115.52	122.06
7	B	1009	NAG	O7-C7-C8	-2.73	117.09	122.06
7	B	1007	NAG	O3-C3-C4	-2.64	104.62	110.36
6	A	1009	NAG	C2-N2-C7	-2.47	119.34	122.94
6	A	1009	NAG	O3-C3-C2	-2.42	104.21	109.39
7	B	1009	NAG	O5-C1-C2	-2.30	108.27	111.47
6	A	1009	NAG	C6-C5-C4	-2.26	107.71	113.00
6	A	1010	NAG	O7-C7-C8	-2.24	117.98	122.06
7	B	1008	NAG	O7-C7-C8	-2.06	118.31	122.06
7	B	1007	NAG	C1-O5-C5	2.08	115.03	112.17
7	B	1008	NAG	O7-C7-N2	2.12	126.01	121.92
6	A	1009	NAG	O4-C4-C3	2.18	115.10	110.36
6	A	1010	NAG	O3-C3-C4	2.33	115.43	110.36
6	A	1009	NAG	C4-C3-C2	2.40	114.54	111.02
6	A	1008	NAG	C1-C2-N2	2.60	114.93	110.49
7	B	1009	NAG	O3-C3-C2	2.82	115.44	109.39
7	B	1009	NAG	C1-C2-N2	3.08	115.75	110.49
6	A	1011	NAG	C3-C4-C5	3.15	115.77	110.22
6	A	1011	NAG	C1-O5-C5	3.20	116.58	112.17

*Continued on next page...*

*Continued from previous page...*

Mol	Chain	Res	Type	Atoms	Z	Observed(°)	Ideal(°)
7	B	1008	NAG	C3-C4-C5	3.66	116.67	110.22
7	B	1009	NAG	C8-C7-N2	3.84	123.05	116.11
6	A	1011	NAG	O7-C7-N2	3.91	129.44	121.92
6	A	1010	NAG	C8-C7-N2	4.09	123.50	116.11
7	B	1009	NAG	C2-N2-C7	4.12	128.95	122.94
7	B	1007	NAG	C4-C3-C2	4.12	117.06	111.02
7	B	1008	NAG	C4-C3-C2	4.43	117.51	111.02
7	B	1008	NAG	O5-C1-C2	4.65	117.94	111.47
6	A	1011	NAG	O3-C3-C2	4.80	119.67	109.39
7	B	1008	NAG	C1-O5-C5	6.31	120.87	112.17
7	B	1008	NAG	C1-C2-N2	6.44	121.48	110.49
6	A	1011	NAG	C2-N2-C7	6.55	132.50	122.94
6	A	1010	NAG	C1-O5-C5	8.39	123.72	112.17
6	A	1009	NAG	C1-O5-C5	8.90	124.44	112.17
7	B	1008	NAG	C2-N2-C7	9.72	137.13	122.94
6	A	1010	NAG	C1-C2-N2	12.62	132.05	110.49
6	A	1010	NAG	C2-N2-C7	14.82	144.57	122.94

There are no chirality outliers.

There are no torsion outliers.

There are no ring outliers.

4 monomers are involved in 5 short contacts:

Mol	Chain	Res	Type	Clashes	Symm-Clashes
6	A	1009	NAG	1	0
6	A	1011	NAG	1	0
7	B	1007	NAG	3	0
7	B	1009	NAG	1	0

## 5.6 Ligand geometry

Of 14 ligands modelled in this entry, 10 are monoatomic - leaving 4 for Mogul analysis.

In the following table, the Counts columns list the number of bonds (or angles) for which Mogul statistics could be retrieved, the number of bonds (or angles) that are observed in the model and the number of bonds (or angles) that are defined in the chemical component dictionary. The Link column lists molecule types, if any, to which the group is linked. The Z score for a bond length (or angle) is the number of standard deviations the observed value is removed from the expected value. A bond length (or angle) with  $|Z| > 2$  is considered an outlier worth inspection. RMSZ is the root-mean-square of all Z scores of the bond lengths (or angles).

Mol	Type	Chain	Res	Link	Bond lengths			Bond angles		
					Counts	RMSZ	# Z  > 2	Counts	RMSZ	# Z  > 2
4	4NP	A	1006	2	9,10,14	4.27	6 (66%)	11,13,20	3.74	5 (45%)
5	NAG	A	1007	1	14,14,15	0.55	0	15,19,21	0.63	0
4	4NP	B	1006	2	9,10,14	4.25	6 (66%)	11,13,20	4.12	6 (54%)
5	NAG	B	1010	1	14,14,15	0.54	0	15,19,21	0.63	0

In the following table, the Chirals column lists the number of chiral outliers, the number of chiral centers analysed, the number of these observed in the model and the number defined in the chemical component dictionary. Similar counts are reported in the Torsion and Rings columns. '-' means no outliers of that kind were identified.

Mol	Type	Chain	Res	Link	Chirals	Torsions	Rings
4	4NP	A	1006	2	-	0/2/4/9	0/1/1/1
5	NAG	A	1007	1	-	0/6/23/26	0/1/1/1
4	4NP	B	1006	2	-	0/2/4/9	0/1/1/1
5	NAG	B	1010	1	-	0/6/23/26	0/1/1/1

All (12) bond length outliers are listed below:

Mol	Chain	Res	Type	Atoms	Z	Observed(Å)	Ideal(Å)
4	A	1006	4NP	O6-N	2.44	1.27	1.22
4	B	1006	4NP	C5-C4	3.39	1.45	1.38
4	B	1006	4NP	O6-N	3.42	1.28	1.22
4	A	1006	4NP	C6-C1	3.74	1.46	1.38
4	A	1006	4NP	C5-C4	4.05	1.46	1.38
4	B	1006	4NP	C6-C1	4.18	1.47	1.38
4	A	1006	4NP	C3-C2	4.77	1.47	1.38
4	B	1006	4NP	C3-C2	5.07	1.47	1.38
4	B	1006	4NP	C2-C1	6.62	1.51	1.38
4	B	1006	4NP	C3-C4	6.92	1.52	1.38
4	A	1006	4NP	C3-C4	7.10	1.53	1.38
4	A	1006	4NP	C2-C1	7.27	1.53	1.38

All (11) bond angle outliers are listed below:

Mol	Chain	Res	Type	Atoms	Z	Observed(°)	Ideal(°)
4	A	1006	4NP	C5-C4-N	-7.86	113.42	119.41
4	B	1006	4NP	C5-C4-N	-7.70	113.54	119.41
4	B	1006	4NP	C3-C2-C1	-6.70	112.28	119.88
4	A	1006	4NP	C3-C2-C1	-5.10	114.09	119.88
4	B	1006	4NP	O1-C1-C6	-4.10	108.49	120.04
4	A	1006	4NP	O1-C1-C6	-3.47	110.27	120.04
4	B	1006	4NP	O1-C1-C2	2.00	125.68	120.04

*Continued on next page...*



*Continued from previous page...*

Mol	Chain	Res	Type	Atoms	Z	Observed(°)	Ideal(°)
4	A	1006	4NP	C6-C1-C2	2.93	125.02	119.74
4	B	1006	4NP	C6-C1-C2	3.38	125.83	119.74
4	A	1006	4NP	C3-C4-N	6.29	124.20	119.41
4	B	1006	4NP	C3-C4-N	6.68	124.50	119.41

There are no chirality outliers.

There are no torsion outliers.

There are no ring outliers.

3 monomers are involved in 3 short contacts:

Mol	Chain	Res	Type	Clashes	Symm-Clashes
4	A	1006	4NP	1	0
4	B	1006	4NP	1	0
5	B	1010	NAG	1	0

## 5.7 Other polymers [i](#)

There are no such residues in this entry.

## 5.8 Polymer linkage issues [i](#)

There are no chain breaks in this entry.

## 6 Fit of model and data

### 6.1 Protein, DNA and RNA chains

In the following table, the column labelled ‘#RSRZ > 2’ contains the number (and percentage) of RSRZ outliers, followed by percent RSRZ outliers for the chain as percentile scores relative to all X-ray entries and entries of similar resolution. The OWAB column contains the minimum, median, 95<sup>th</sup> percentile and maximum values of the occupancy-weighted average B-factor per residue. The column labelled ‘Q < 0.9’ lists the number of (and percentage) of residues with an average occupancy less than 0.9.

Mol	Chain	Analysed	<RSRZ>	#RSRZ>2	OWAB(Å <sup>2</sup> )	Q<0.9
1	A	486/488 (99%)	-0.20	10 (2%) 64 65	12, 20, 36, 65	0
1	B	484/488 (99%)	-0.06	15 (3%) 49 51	11, 20, 39, 64	0
All	All	970/976 (99%)	-0.13	25 (2%) 56 58	11, 20, 38, 65	0

All (25) RSRZ outliers are listed below:

Mol	Chain	Res	Type	RSRZ
1	B	480	ALA	7.6
1	A	402	ASN	7.0
1	B	482	GLU	6.5
1	B	481	ASP	5.7
1	A	404	GLY	4.9
1	A	403	SER	4.6
1	A	401	LEU	4.6
1	B	403	SER	4.3
1	B	483	HIS	4.2
1	B	402	ASN	4.0
1	B	401	LEU	3.5
1	B	404	GLY	3.1
1	A	176	SER	2.9
1	B	46	VAL	2.9
1	B	477	ALA	2.7
1	B	484	HIS	2.6
1	B	176	SER	2.5
1	B	180	GLN	2.4
1	B	478	PRO	2.3
1	B	121	CYS	2.2
1	A	258	GLN	2.2
1	A	387	SER	2.2
1	A	122	ASN	2.1
1	A	400	VAL	2.1

*Continued on next page...*

*Continued from previous page...*

Mol	Chain	Res	Type	RSRZ
1	A	222	ASP	2.0

## 6.2 Non-standard residues in protein, DNA, RNA chains [i](#)

There are no non-standard protein/DNA/RNA residues in this entry.

## 6.3 Carbohydrates [i](#)

In the following table, the Atoms column lists the number of modelled atoms in the group and the number defined in the chemical component dictionary. LLDF column lists the quality of electron density of the group with respect to its neighbouring residues in protein, DNA or RNA chains. The B-factors column lists the minimum, median, 95<sup>th</sup> percentile and maximum values of B factors of atoms in the group. The column labelled 'Q < 0.9' lists the number of atoms with occupancy less than 0.9.

Mol	Type	Chain	Res	Atoms	RSCC	RSR	LLDF	B-factors(Å <sup>2</sup> )	Q<0.9
6	NAG	A	1011	14/15	0.81	0.23	1.70	39,53,69,71	0
6	NAG	A	1008	14/15	0.94	0.16	-0.12	29,33,35,37	0
6	NAG	A	1010	14/15	0.71	0.25	-	51,59,70,70	0
7	NAG	B	1007	14/15	0.93	0.21	-	40,47,53,56	0
6	NAG	A	1009	14/15	0.93	0.21	-	33,36,39,54	0
7	NAG	B	1008	14/15	0.84	0.40	-	53,57,85,86	0
7	NAG	B	1009	14/15	0.86	0.35	-	59,69,76,76	0

## 6.4 Ligands [i](#)

In the following table, the Atoms column lists the number of modelled atoms in the group and the number defined in the chemical component dictionary. LLDF column lists the quality of electron density of the group with respect to its neighbouring residues in protein, DNA or RNA chains. The B-factors column lists the minimum, median, 95<sup>th</sup> percentile and maximum values of B factors of atoms in the group. The column labelled 'Q < 0.9' lists the number of atoms with occupancy less than 0.9.

Mol	Type	Chain	Res	Atoms	RSCC	RSR	LLDF	B-factors(Å <sup>2</sup> )	Q<0.9
5	NAG	B	1010	14/15	0.78	0.26	5.46	30,33,40,41	0
3	MG	B	1003	1/1	0.95	0.24	5.02	41,41,41,41	0
4	4NP	A	1006	10/14	0.84	0.24	4.76	34,52,59,62	0
4	4NP	B	1006	10/14	0.89	0.20	4.55	31,44,50,53	0
3	MG	B	1004	1/1	0.98	0.12	-0.03	29,29,29,29	0
2	ZN	A	1001	1/1	1.00	0.12	-0.12	24,24,24,24	0

*Continued on next page...*

*Continued from previous page...*

Mol	Type	Chain	Res	Atoms	RSCC	RSR	LLDF	B-factors( $\text{\AA}^2$ )	Q<0.9
2	ZN	B	1001	1/1	1.00	0.11	-0.52	25,25,25,25	0
3	MG	A	1003	1/1	0.96	0.11	-0.84	54,54,54,54	0
2	ZN	B	1002	1/1	0.99	0.05	-2.46	32,32,32,32	1
3	MG	A	1004	1/1	0.98	0.06	-2.47	23,23,23,23	0
2	ZN	A	1002	1/1	0.99	0.07	-3.65	34,34,34,34	1
5	NAG	A	1007	14/15	0.78	0.31	-	36,44,47,50	0
3	MG	A	1005	1/1	0.48	0.21	-	49,49,49,49	0
3	MG	B	1005	1/1	0.91	0.08	-	31,31,31,31	0

## 6.5 Other polymers [i](#)

There are no such residues in this entry.