



# wwPDB X-ray Structure Validation Summary Report ⓘ

Sep 17, 2017 – 03:19 AM EDT

PDB ID : 5KPC  
Title : Pavine N-methyltransferase H206A mutant in complex with S-adenosylmethionine pH 6  
Authors : Torres, M.A.; Hoffarth, E.; Eugenio, L.; Savtchouk, J.; Chen, X.; Morris, J.; Facchini, P.J.; Ng, K.K.S.  
Deposited on : unknown  
Resolution : 2.50 Å(reported)

This is a wwPDB X-ray Structure Validation Summary Report for a publicly released PDB entry.

We welcome your comments at [validation@mail.wwpdb.org](mailto:validation@mail.wwpdb.org)

A user guide is available at

<http://wwpdb.org/validation/2016/XrayValidationReportHelp>

with specific help available everywhere you see the ⓘ symbol.

---

The following versions of software and data (see [references ⓘ](#)) were used in the production of this report:

MolProbity : 4.02b-467  
Mogul : 1.7.2 (RC1), CSD as538be (2017)  
Xtriage (Phenix) : 1.9-1692  
EDS : rb-20029824  
Percentile statistics : 20161228.v01 (using entries in the PDB archive December 28th 2016)  
Refmac : 5.8.0135  
CCP4 : 6.5.0  
Ideal geometry (proteins) : Engh & Huber (2001)  
Ideal geometry (DNA, RNA) : Parkinson et al. (1996)  
Validation Pipeline (wwPDB-VP) : rb-20029824

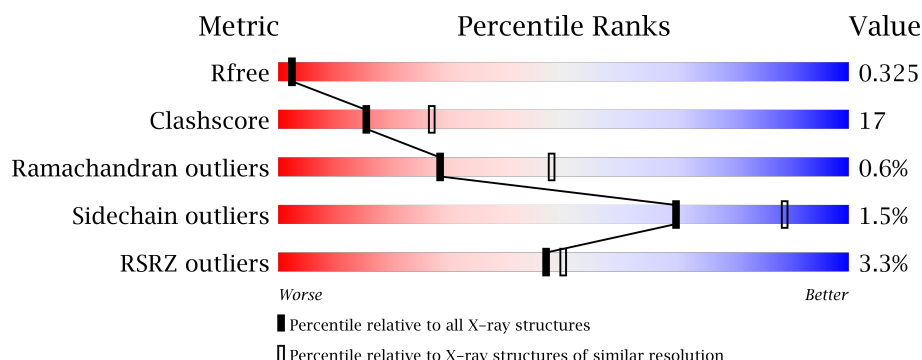
# 1 Overall quality at a glance

The following experimental techniques were used to determine the structure:

## *X-RAY DIFFRACTION*

The reported resolution of this entry is 2.50 Å.

Percentile scores (ranging between 0-100) for global validation metrics of the entry are shown in the following graphic. The table shows the number of entries on which the scores are based.



Metric	Whole archive (#Entries)	Similar resolution (#Entries, resolution range(Å))
$R_{free}$	100719	3846 (2.50-2.50)
Clashscore	112137	4554 (2.50-2.50)
Ramachandran outliers	110173	4463 (2.50-2.50)
Sidechain outliers	110143	4465 (2.50-2.50)
RSRZ outliers	101464	3876 (2.50-2.50)

The table below summarises the geometric issues observed across the polymeric chains and their fit to the electron density. The red, orange, yellow and green segments on the lower bar indicate the fraction of residues that contain outliers for  $\geq 3$ , 2, 1 and 0 types of geometric quality criteria. A grey segment represents the fraction of residues that are not modelled. The numeric value for each fraction is indicated below the corresponding segment, with a dot representing fractions  $\leq 5\%$ . The upper red bar (where present) indicates the fraction of residues that have poor fit to the electron density. The numeric value is given above the bar.

Mol	Chain	Length	Quality of chain
1	A	397	<div> <div>3%</div> <div>55%</div> <div>28%</div> <div>16%</div> </div>
1	B	397	<div> <div>3%</div> <div>50%</div> <div>29%</div> <div>19%</div> </div>

The following table lists non-polymeric compounds, carbohydrate monomers and non-standard residues in protein, DNA, RNA chains that are outliers for geometric or electron-density-fit criteria:

Mol	Type	Chain	Res	Chirality	Geometry	Clashes	Electron density
2	SAM	B	401	-	-	-	X

## 2 Entry composition [i](#)

There are 3 unique types of molecules in this entry. The entry contains 5479 atoms, of which 0 are hydrogens and 0 are deuteriums.

In the tables below, the ZeroOcc column contains the number of atoms modelled with zero occupancy, the AltConf column contains the number of residues with at least one atom in alternate conformation and the Trace column contains the number of residues modelled with at most 2 atoms.

- Molecule 1 is a protein called Pavine N-methyltransferase.

Mol	Chain	Residues	Atoms					ZeroOcc	AltConf	Trace
1	A	335	Total	C	N	O	S	0	0	0
			2745	1769	443	513	20			
1	B	322	Total	C	N	O	S	0	0	0
			2643	1706	423	494	20			

There are 86 discrepancies between the modelled and reference sequences:

Chain	Residue	Modelled	Actual	Comment	Reference
A	-40	MET	-	expression tag	UNP C3SBW0
A	-39	ARG	-	expression tag	UNP C3SBW0
A	-38	GLY	-	expression tag	UNP C3SBW0
A	-37	SER	-	expression tag	UNP C3SBW0
A	-36	HIS	-	expression tag	UNP C3SBW0
A	-35	HIS	-	expression tag	UNP C3SBW0
A	-34	HIS	-	expression tag	UNP C3SBW0
A	-33	HIS	-	expression tag	UNP C3SBW0
A	-32	HIS	-	expression tag	UNP C3SBW0
A	-31	HIS	-	expression tag	UNP C3SBW0
A	-30	GLY	-	expression tag	UNP C3SBW0
A	-29	MET	-	expression tag	UNP C3SBW0
A	-28	ALA	-	expression tag	UNP C3SBW0
A	-27	SER	-	expression tag	UNP C3SBW0
A	-26	MET	-	expression tag	UNP C3SBW0
A	-25	THR	-	expression tag	UNP C3SBW0
A	-24	GLY	-	expression tag	UNP C3SBW0
A	-23	GLY	-	expression tag	UNP C3SBW0
A	-22	GLN	-	expression tag	UNP C3SBW0
A	-21	GLN	-	expression tag	UNP C3SBW0
A	-20	MET	-	expression tag	UNP C3SBW0
A	-19	GLY	-	expression tag	UNP C3SBW0
A	-18	ARG	-	expression tag	UNP C3SBW0
A	-17	ASP	-	expression tag	UNP C3SBW0
A	-16	LEU	-	expression tag	UNP C3SBW0

*Continued on next page...*

*Continued from previous page...*

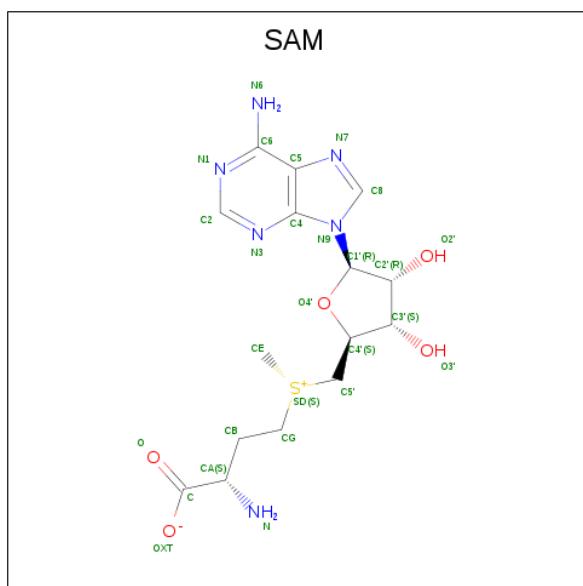
Chain	Residue	Modelled	Actual	Comment	Reference
A	-15	TYR	-	expression tag	UNP C3SBW0
A	-14	ASP	-	expression tag	UNP C3SBW0
A	-13	ASP	-	expression tag	UNP C3SBW0
A	-12	ASP	-	expression tag	UNP C3SBW0
A	-11	ASP	-	expression tag	UNP C3SBW0
A	-10	LYS	-	expression tag	UNP C3SBW0
A	-9	ASP	-	expression tag	UNP C3SBW0
A	-8	ARG	-	expression tag	UNP C3SBW0
A	-7	TRP	-	expression tag	UNP C3SBW0
A	-6	ILE	-	expression tag	UNP C3SBW0
A	-5	ARG	-	expression tag	UNP C3SBW0
A	-4	PRO	-	expression tag	UNP C3SBW0
A	-3	ARG	-	expression tag	UNP C3SBW0
A	-2	ASP	-	expression tag	UNP C3SBW0
A	-1	LEU	-	expression tag	UNP C3SBW0
A	0	GLN	-	expression tag	UNP C3SBW0
A	206	ALA	HIS	engineered mutation	UNP C3SBW0
A	224	ASP	TYR	conflict	UNP C3SBW0
B	-40	MET	-	expression tag	UNP C3SBW0
B	-39	ARG	-	expression tag	UNP C3SBW0
B	-38	GLY	-	expression tag	UNP C3SBW0
B	-37	SER	-	expression tag	UNP C3SBW0
B	-36	HIS	-	expression tag	UNP C3SBW0
B	-35	HIS	-	expression tag	UNP C3SBW0
B	-34	HIS	-	expression tag	UNP C3SBW0
B	-33	HIS	-	expression tag	UNP C3SBW0
B	-32	HIS	-	expression tag	UNP C3SBW0
B	-31	HIS	-	expression tag	UNP C3SBW0
B	-30	GLY	-	expression tag	UNP C3SBW0
B	-29	MET	-	expression tag	UNP C3SBW0
B	-28	ALA	-	expression tag	UNP C3SBW0
B	-27	SER	-	expression tag	UNP C3SBW0
B	-26	MET	-	expression tag	UNP C3SBW0
B	-25	THR	-	expression tag	UNP C3SBW0
B	-24	GLY	-	expression tag	UNP C3SBW0
B	-23	GLY	-	expression tag	UNP C3SBW0
B	-22	GLN	-	expression tag	UNP C3SBW0
B	-21	GLN	-	expression tag	UNP C3SBW0
B	-20	MET	-	expression tag	UNP C3SBW0
B	-19	GLY	-	expression tag	UNP C3SBW0
B	-18	ARG	-	expression tag	UNP C3SBW0
B	-17	ASP	-	expression tag	UNP C3SBW0

*Continued on next page...*

Continued from previous page...

Chain	Residue	Modelled	Actual	Comment	Reference
B	-16	LEU	-	expression tag	UNP C3SBW0
B	-15	TYR	-	expression tag	UNP C3SBW0
B	-14	ASP	-	expression tag	UNP C3SBW0
B	-13	ASP	-	expression tag	UNP C3SBW0
B	-12	ASP	-	expression tag	UNP C3SBW0
B	-11	ASP	-	expression tag	UNP C3SBW0
B	-10	LYS	-	expression tag	UNP C3SBW0
B	-9	ASP	-	expression tag	UNP C3SBW0
B	-8	ARG	-	expression tag	UNP C3SBW0
B	-7	TRP	-	expression tag	UNP C3SBW0
B	-6	ILE	-	expression tag	UNP C3SBW0
B	-5	ARG	-	expression tag	UNP C3SBW0
B	-4	PRO	-	expression tag	UNP C3SBW0
B	-3	ARG	-	expression tag	UNP C3SBW0
B	-2	ASP	-	expression tag	UNP C3SBW0
B	-1	LEU	-	expression tag	UNP C3SBW0
B	0	GLN	-	expression tag	UNP C3SBW0
B	206	ALA	HIS	engineered mutation	UNP C3SBW0
B	224	ASP	TYR	conflict	UNP C3SBW0

- Molecule 2 is S-ADENOSYLMETHIONINE (three-letter code: SAM) (formula:  $C_{15}H_{22}N_6O_5S$ ).



Mol	Chain	Residues	Atoms					ZeroOcc	AltConf
2	A	1	Total	C	N	O	S	0	0
			27	15	6	5	1		
2	B	1	Total	C	N	O	S	0	0
			27	15	6	5	1		

- Molecule 3 is water.

Mol	Chain	Residues	Atoms		ZeroOcc	AltConf
3	A	24	Total 24	O 24	0	0
3	B	13	Total 13	O 13	0	0

These plots are drawn for all protein, RNA and DNA chains in the entry. The first graphic for a chain summarises the proportions of the various outlier classes displayed in the second graphic. The second graphic shows the sequence view annotated by issues in geometry and electron density. Residues are color-coded according to the number of geometric quality criteria for which they contain at least one outlier: green = 0, yellow = 1, orange = 2 and red = 3 or more. A red dot above a residue indicates a poor fit to the electron density ( $\text{RSRZ} > 2$ ). Stretches of 2 or more consecutive residues without any outlier are shown as a green connector. Residues present in the sample, but not in the model, are shown in grey.

[illegible]

Chain B:

MET	ARG	GLY	GLU	SER	HIS	HIS	HIS	HIS	GLY	MET	MET	GLY	ARG	ASP	LEU	TYP	ASP	ASP	ASP	LYS	ASP	ARG	TRP	ILE	ARG	PRO	ARG	ASP	ASP	LEU	LEU	GLN	MET	THR	THR	LYS	GLN	THR	THR	LYS	LYS	GLU	ALA	VAL	ASN	LEU	ILE	LYS	ARG	ILE	GLU
-----	-----	-----	-----	-----	-----	-----	-----	-----	-----	-----	-----	-----	-----	-----	-----	-----	-----	-----	-----	-----	-----	-----	-----	-----	-----	-----	-----	-----	-----	-----	-----	-----	-----	-----	-----	-----	-----	-----	-----	-----	-----	-----	-----	-----	-----	-----	-----	-----	-----	-----	-----



## 4 Data and refinement statistics

Property	Value	Source
Space group	P 1 21 1	Depositor
Cell constants a, b, c, $\alpha$ , $\beta$ , $\gamma$	54.22Å 71.74Å 96.31Å 90.00° 98.96° 90.00°	Depositor
Resolution (Å)	47.57 – 2.50 47.57 – 2.50	Depositor EDS
% Data completeness (in resolution range)	99.6 (47.57-2.50) 99.6 (47.57-2.50)	Depositor EDS
$R_{merge}$	0.13	Depositor
$R_{sym}$	0.13	Depositor
$\langle I/\sigma(I) \rangle$ <sup>1</sup>	2.21 (at 2.51Å)	Xtriage
Refinement program	PHENIX 1.10.1_2155	Depositor
R, $R_{free}$	0.235 , 0.326 0.234 , 0.325	Depositor DCC
$R_{free}$ test set	1269 reflections (5.01%)	DCC
Wilson B-factor (Å <sup>2</sup> )	38.7	Xtriage
Anisotropy	0.698	Xtriage
Bulk solvent $k_{sol}$ (e/Å <sup>3</sup> ), $B_{sol}$ (Å <sup>2</sup> )	0.35 , 55.9	EDS
L-test for twinning <sup>2</sup>	$\langle  L  \rangle = 0.45$ , $\langle L^2 \rangle = 0.28$	Xtriage
Estimated twinning fraction	No twinning to report.	Xtriage
$F_o, F_c$ correlation	0.91	EDS
Total number of atoms	5479	wwPDB-VP
Average B, all atoms (Å <sup>2</sup> )	42.0	wwPDB-VP

Xtriage's analysis on translational NCS is as follows: *The largest off-origin peak in the Patterson function is 19.55% of the height of the origin peak. No significant pseudotranslation is detected.*

<sup>1</sup>Intensities estimated from amplitudes.

<sup>2</sup>Theoretical values of  $\langle |L| \rangle$ ,  $\langle L^2 \rangle$  for acentric reflections are 0.5, 0.333 respectively for untwinned datasets, and 0.375, 0.2 for perfectly twinned datasets.

## 5 Model quality

### 5.1 Standard geometry

Bond lengths and bond angles in the following residue types are not validated in this section: SAM

The Z score for a bond length (or angle) is the number of standard deviations the observed value is removed from the expected value. A bond length (or angle) with  $|Z| > 5$  is considered an outlier worth inspection. RMSZ is the root-mean-square of all Z scores of the bond lengths (or angles).

Mol	Chain	Bond lengths		Bond angles	
		RMSZ	$\# Z  > 5$	RMSZ	$\# Z  > 5$
1	A	0.56	0/2807	0.69	1/3778 (0.0%)
1	B	0.54	1/2704 (0.0%)	0.66	0/3640
All	All	0.55	1/5511 (0.0%)	0.68	1/7418 (0.0%)

Chiral center outliers are detected by calculating the chiral volume of a chiral center and verifying if the center is modelled as a planar moiety or with the opposite hand. A planarity outlier is detected by checking planarity of atoms in a peptide group, atoms in a mainchain group or atoms of a sidechain that are expected to be planar.

Mol	Chain	#Chirality outliers	#Planarity outliers
1	A	0	1

All (1) bond length outliers are listed below:

Mol	Chain	Res	Type	Atoms	Z	Observed(Å)	Ideal(Å)
1	B	248	ASP	CA-CB	5.68	1.66	1.53

All (1) bond angle outliers are listed below:

Mol	Chain	Res	Type	Atoms	Z	Observed(°)	Ideal(°)
1	A	212	LEU	CA-CB-CG	5.74	128.51	115.30

There are no chirality outliers.

All (1) planarity outliers are listed below:

Mol	Chain	Res	Type	Group
1	A	346	TRP	Peptide

## 5.2 Too-close contacts ⓘ

In the following table, the Non-H and H(model) columns list the number of non-hydrogen atoms and hydrogen atoms in the chain respectively. The H(added) column lists the number of hydrogen atoms added and optimized by MolProbity. The Clashes column lists the number of clashes within the asymmetric unit, whereas Symm-Clashes lists symmetry related clashes.

Mol	Chain	Non-H	H(model)	H(added)	Clashes	Symm-Clashes
1	A	2745	0	2705	92	0
1	B	2643	0	2599	89	0
2	A	27	0	22	5	0
2	B	27	0	22	3	0
3	A	24	0	0	2	0
3	B	13	0	0	3	0
All	All	5479	0	5348	179	0

The all-atom clashscore is defined as the number of clashes found per 1000 atoms (including hydrogen atoms). The all-atom clashscore for this structure is 17.

The worst 5 of 179 close contacts within the same asymmetric unit are listed below, sorted by their clash magnitude.

Atom-1	Atom-2	Interatomic distance (Å)	Clash overlap (Å)
1:B:38:LYS:NZ	1:B:245:ASP:OD2	1.91	1.02
1:B:174:LEU:CD1	1:B:176:LEU:HG	2.01	0.91
1:A:314:TYR:O	1:A:319:LYS:HE3	1.74	0.88
1:A:279:ASN:HD22	1:A:280:HIS:H	1.21	0.85
1:A:26:GLU:OE1	1:A:29:ARG:NH1	2.12	0.82

There are no symmetry-related clashes.

## 5.3 Torsion angles ⓘ

### 5.3.1 Protein backbone ⓘ

In the following table, the Percentiles column shows the percent Ramachandran outliers of the chain as a percentile score with respect to all X-ray entries followed by that with respect to entries of similar resolution.

The Analysed column shows the number of residues for which the backbone conformation was analysed, and the total number of residues.

Mol	Chain	Analysed	Favoured	Allowed	Outliers	Percentiles	
1	A	329/397 (83%)	304 (92%)	23 (7%)	2 (1%)	28	48

*Continued on next page...*

*Continued from previous page...*

Mol	Chain	Analysed	Favoured	Allowed	Outliers	Percentiles	
1	B	316/397 (80%)	287 (91%)	27 (8%)	2 (1%)	28	48
All	All	645/794 (81%)	591 (92%)	50 (8%)	4 (1%)	28	48

All (4) Ramachandran outliers are listed below:

Mol	Chain	Res	Type
1	B	223	GLN
1	A	175	ASP
1	A	320	ALA
1	B	224	ASP

### 5.3.2 Protein sidechains ⓘ

In the following table, the Percentiles column shows the percent sidechain outliers of the chain as a percentile score with respect to all X-ray entries followed by that with respect to entries of similar resolution.

The Analysed column shows the number of residues for which the sidechain conformation was analysed, and the total number of residues.

Mol	Chain	Analysed	Rotameric	Outliers	Percentiles	
1	A	304/358 (85%)	300 (99%)	4 (1%)	73	90
1	B	293/358 (82%)	288 (98%)	5 (2%)	66	87
All	All	597/716 (83%)	588 (98%)	9 (2%)	70	89

5 of 9 residues with a non-rotameric sidechain are listed below:

Mol	Chain	Res	Type
1	B	174	LEU
1	B	297	LYS
1	B	190	GLU
1	A	279	ASN
1	B	187	THR

Some sidechains can be flipped to improve hydrogen bonding and reduce clashes. 5 of 8 such sidechains are listed below:

Mol	Chain	Res	Type
1	A	272	GLN
1	B	232	HIS

*Continued on next page...*

*Continued from previous page...*

Mol	Chain	Res	Type
1	A	341	ASN
1	A	129	GLN
1	A	279	ASN

### 5.3.3 RNA ⓘ

There are no RNA molecules in this entry.

## 5.4 Non-standard residues in protein, DNA, RNA chains ⓘ

There are no non-standard protein/DNA/RNA residues in this entry.

## 5.5 Carbohydrates ⓘ

There are no carbohydrates in this entry.

## 5.6 Ligand geometry ⓘ

2 ligands are modelled in this entry.

In the following table, the Counts columns list the number of bonds (or angles) for which Mogul statistics could be retrieved, the number of bonds (or angles) that are observed in the model and the number of bonds (or angles) that are defined in the chemical component dictionary. The Link column lists molecule types, if any, to which the group is linked. The Z score for a bond length (or angle) is the number of standard deviations the observed value is removed from the expected value. A bond length (or angle) with  $|Z| > 2$  is considered an outlier worth inspection. RMSZ is the root-mean-square of all Z scores of the bond lengths (or angles).

Mol	Type	Chain	Res	Link	Bond lengths			Bond angles		
					Counts	RMSZ	# Z  > 2	Counts	RMSZ	# Z  > 2
2	SAM	A	401	-	21,29,29	0.91	1 (4%)	17,42,42	1.28	1 (5%)
2	SAM	B	401	-	21,29,29	0.96	1 (4%)	17,42,42	1.20	1 (5%)

In the following table, the Chirals column lists the number of chiral outliers, the number of chiral centers analysed, the number of these observed in the model and the number defined in the chemical component dictionary. Similar counts are reported in the Torsion and Rings columns. '-' means no outliers of that kind were identified.

Mol	Type	Chain	Res	Link	Chirals	Torsions	Rings
2	SAM	A	401	-	-	0/8/33/33	0/3/3/3

*Continued on next page...*

*Continued from previous page...*

Mol	Type	Chain	Res	Link	Chirals	Torsions	Rings
2	SAM	B	401	-	-	0/8/33/33	0/3/3/3

All (2) bond length outliers are listed below:

Mol	Chain	Res	Type	Atoms	Z	Observed(Å)	Ideal(Å)
2	B	401	SAM	CG-SD	-3.30	1.73	1.80
2	A	401	SAM	CG-SD	-3.07	1.74	1.80

All (2) bond angle outliers are listed below:

Mol	Chain	Res	Type	Atoms	Z	Observed(°)	Ideal(°)
2	A	401	SAM	C4'-O4'-C1'	-4.38	105.10	109.77
2	B	401	SAM	O2'-C2'-C3'	2.27	119.09	111.83

There are no chirality outliers.

There are no torsion outliers.

There are no ring outliers.

2 monomers are involved in 8 short contacts:

Mol	Chain	Res	Type	Clashes	Symm-Clashes
2	A	401	SAM	5	0
2	B	401	SAM	3	0

## 5.7 Other polymers [i](#)

There are no such residues in this entry.

## 5.8 Polymer linkage issues [i](#)

There are no chain breaks in this entry.

## 6 Fit of model and data [i](#)

### 6.1 Protein, DNA and RNA chains [i](#)

In the following table, the column labelled ‘#RSRZ> 2’ contains the number (and percentage) of RSRZ outliers, followed by percent RSRZ outliers for the chain as percentile scores relative to all X-ray entries and entries of similar resolution. The OWAB column contains the minimum, median, 95<sup>th</sup> percentile and maximum values of the occupancy-weighted average B-factor per residue. The column labelled ‘Q< 0.9’ lists the number of (and percentage) of residues with an average occupancy less than 0.9.

Mol	Chain	Analysed	<RSRZ>	#RSRZ>2	OWAB(Å <sup>2</sup> )	Q<0.9
1	A	335/397 (84%)	0.34	10 (2%) 51 53	20, 39, 64, 79	0
1	B	322/397 (81%)	0.39	12 (3%) 42 44	25, 43, 61, 74	0
All	All	657/794 (82%)	0.37	22 (3%) 47 50	20, 41, 62, 79	0

The worst 5 of 22 RSRZ outliers are listed below:

Mol	Chain	Res	Type	RSRZ
1	A	18	ILE	4.4
1	A	14	LEU	3.5
1	A	314	TYR	3.1
1	A	303	ILE	3.1
1	B	241	TYR	2.9

### 6.2 Non-standard residues in protein, DNA, RNA chains [i](#)

There are no non-standard protein/DNA/RNA residues in this entry.

### 6.3 Carbohydrates [i](#)

There are no carbohydrates in this entry.

### 6.4 Ligands [i](#)

In the following table, the Atoms column lists the number of modelled atoms in the group and the number defined in the chemical component dictionary. LLDF column lists the quality of electron density of the group with respect to its neighbouring residues in protein, DNA or RNA chains. The B-factors column lists the minimum, median, 95<sup>th</sup> percentile and maximum values of B factors of atoms in the group. The column labelled ‘Q< 0.9’ lists the number of atoms with occupancy less than 0.9.

Mol	Type	Chain	Res	Atoms	RSCC	RSR	LLDF	B-factors( $\text{\AA}^2$ )	Q<0.9
2	SAM	B	401	27/27	0.66	0.28	2.09	46,61,69,88	0
2	SAM	A	401	27/27	0.80	0.24	1.52	38,56,63,80	0

## 6.5 Other polymers [i](#)

There are no such residues in this entry.