



Full wwPDB X-ray Structure Validation Report ⓘ

Oct 1, 2017 – 08:47 AM EDT

PDB ID : 1KQB
Title : Structure of Nitroreductase from *E. cloacae* complex with inhibitor benzoate
Authors : Haynes, C.A.; Koder, R.L.; Miller, A.F.; Rodgers, D.W.
Deposited on : unknown
Resolution : 1.80 Å(reported)

This is a Full wwPDB X-ray Structure Validation Report for a publicly released PDB entry.

We welcome your comments at validation@mail.wwpdb.org

A user guide is available at

<http://wwpdb.org/validation/2016/XrayValidationReportHelp>

with specific help available everywhere you see the ⓘ symbol.

The following versions of software and data (see [references ⓘ](#)) were used in the production of this report:

MolProbity : 4.02b-467
Mogul : 1.7.2 (RC1), CSD as538be (2017)
Xtriage (Phenix) : 1.9-1692
EDS : rb-20030345
Percentile statistics : 20161228.v01 (using entries in the PDB archive December 28th 2016)
Refmac : 5.8.0135
CCP4 : 6.5.0
Ideal geometry (proteins) : Engh & Huber (2001)
Ideal geometry (DNA, RNA) : Parkinson et al. (1996)
Validation Pipeline (wwPDB-VP) : rb-20030345

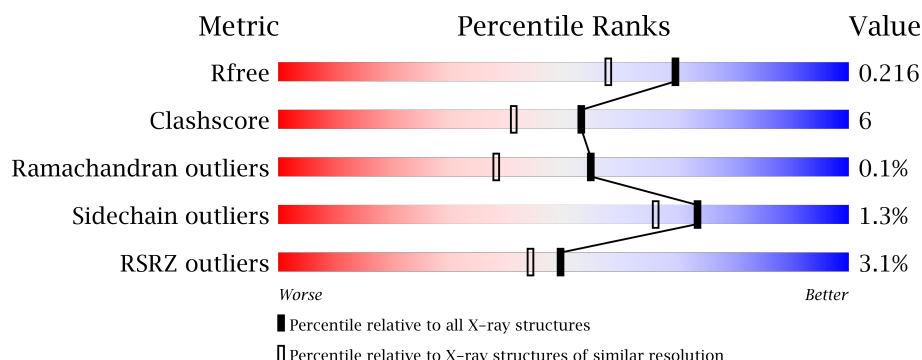
1 Overall quality at a glance

The following experimental techniques were used to determine the structure:

X-RAY DIFFRACTION

The reported resolution of this entry is 1.80 Å.

Percentile scores (ranging between 0-100) for global validation metrics of the entry are shown in the following graphic. The table shows the number of entries on which the scores are based.



Metric	Whole archive (#Entries)	Similar resolution (#Entries, resolution range(Å))
R_{free}	100719	4827 (1.80-1.80)
Clashscore	112137	5742 (1.80-1.80)
Ramachandran outliers	110173	5676 (1.80-1.80)
Sidechain outliers	110143	5675 (1.80-1.80)
RSRZ outliers	101464	4906 (1.80-1.80)

The table below summarises the geometric issues observed across the polymeric chains and their fit to the electron density. The red, orange, yellow and green segments on the lower bar indicate the fraction of residues that contain outliers for ≥ 3 , 2, 1 and 0 types of geometric quality criteria. A grey segment represents the fraction of residues that are not modelled. The numeric value for each fraction is indicated below the corresponding segment, with a dot representing fractions $\leq 5\%$. The upper red bar (where present) indicates the fraction of residues that have poor fit to the electron density. The numeric value is given above the bar.

Mol	Chain	Length	Quality of chain
1	A	217	<div> <div>4%</div> <div> <div></div> <div>89%</div> <div>10%</div> </div> </div>
1	B	217	<div> <div>3%</div> <div> <div></div> <div>85%</div> <div>14%</div> </div> </div>
1	C	217	<div> <div></div> <div> <div></div> <div>88%</div> <div>12%</div> </div> </div>
1	D	217	<div> <div>5%</div> <div> <div></div> <div>84%</div> <div>14%</div> <div>.</div> </div> </div>

The following table lists non-polymeric compounds, carbohydrate monomers and non-standard residues in protein, DNA, RNA chains that are outliers for geometric or electron-density-fit crite-

ria:

Mol	Type	Chain	Res	Chirality	Geometry	Clashes	Electron density
3	BEZ	B	525	-	-	-	X

2 Entry composition [i](#)

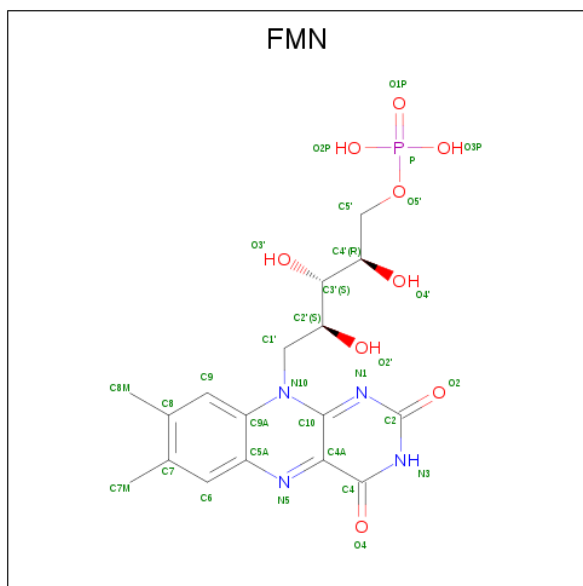
There are 4 unique types of molecules in this entry. The entry contains 7307 atoms, of which 0 are hydrogens and 0 are deuteriums.

In the tables below, the ZeroOcc column contains the number of atoms modelled with zero occupancy, the AltConf column contains the number of residues with at least one atom in alternate conformation and the Trace column contains the number of residues modelled with at most 2 atoms.

- Molecule 1 is a protein called OXYGEN-INSENSITIVE NAD(P)H NITROREDUCTASE.

Mol	Chain	Residues	Atoms					ZeroOcc	AltConf	Trace
1	A	216	Total	C	N	O	S	0	0	0
			1677	1060	286	324	7			
1	B	216	Total	C	N	O	S	0	0	0
			1677	1060	286	324	7			
1	C	216	Total	C	N	O	S	0	0	0
			1677	1060	286	324	7			
1	D	216	Total	C	N	O	S	0	0	0
			1677	1060	286	324	7			

- Molecule 2 is FLAVIN MONONUCLEOTIDE (three-letter code: FMN) (formula: C₁₇H₂₁N₄O₉P).



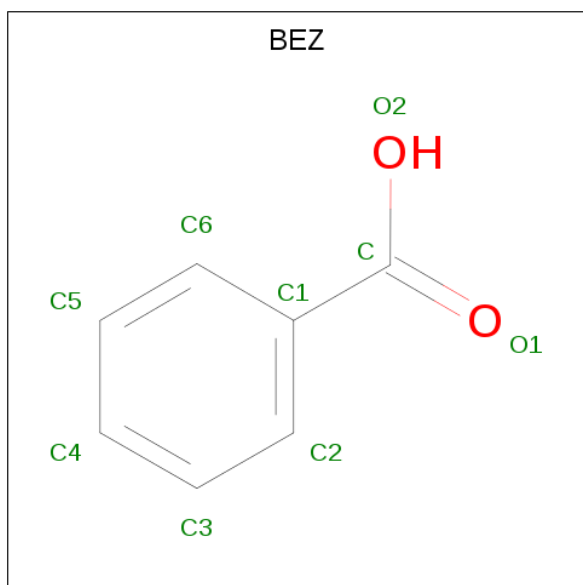
Mol	Chain	Residues	Atoms					ZeroOcc	AltConf
2	A	1	Total	C	N	O	P	0	0
			31	17	4	9	1		
2	B	1	Total	C	N	O	P	0	0
			31	17	4	9	1		

Continued on next page...

Continued from previous page...

Mol	Chain	Residues	Atoms					ZeroOcc	AltConf
2	C	1	Total	C	N	O	P	0	0
			31	17	4	9	1		
2	D	1	Total	C	N	O	P	0	0
			31	17	4	9	1		

- Molecule 3 is BENZOIC ACID (three-letter code: BEZ) (formula: $C_7H_6O_2$).



Mol	Chain	Residues	Atoms			ZeroOcc	AltConf
3	A	1	Total	C	O	0	0
			9	7	2		
3	B	1	Total	C	O	0	0
			9	7	2		
3	C	1	Total	C	O	0	0
			9	7	2		
3	D	1	Total	C	O	0	0
			9	7	2		

- Molecule 4 is water.

Mol	Chain	Residues	Atoms		ZeroOcc	AltConf
4	A	78	Total	O	0	0
			78	78		
4	B	109	Total	O	0	0
			109	109		
4	C	140	Total	O	0	0
			140	140		

Continued on next page...

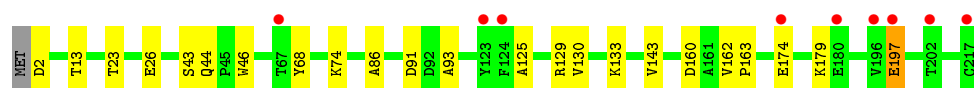
Continued from previous page...

Mol	Chain	Residues	Atoms		ZeroOcc	AltConf
4	D	112	Total	O	0	0
			112	112		

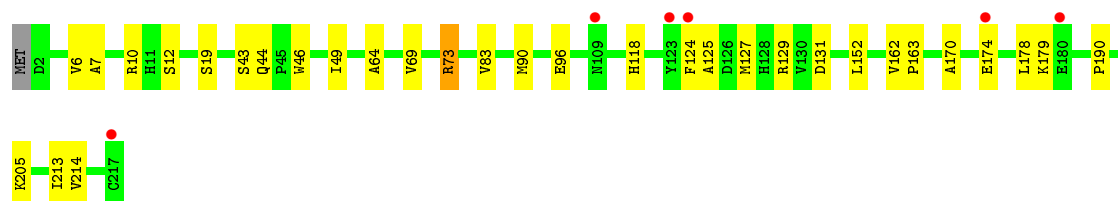
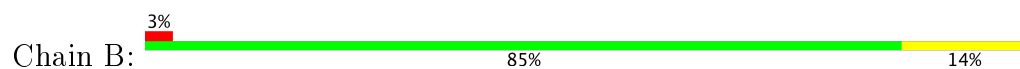
3 Residue-property plots [i](#)

These plots are drawn for all protein, RNA and DNA chains in the entry. The first graphic for a chain summarises the proportions of the various outlier classes displayed in the second graphic. The second graphic shows the sequence view annotated by issues in geometry and electron density. Residues are color-coded according to the number of geometric quality criteria for which they contain at least one outlier: green = 0, yellow = 1, orange = 2 and red = 3 or more. A red dot above a residue indicates a poor fit to the electron density ($RSRZ > 2$). Stretches of 2 or more consecutive residues without any outlier are shown as a green connector. Residues present in the sample, but not in the model, are shown in grey.

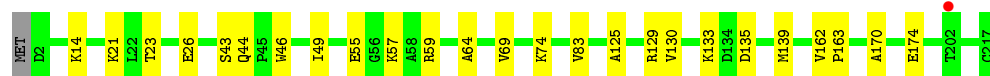
• Molecule 1: OXYGEN-INSENSITIVE NAD(P)H NITROREDUCTASE



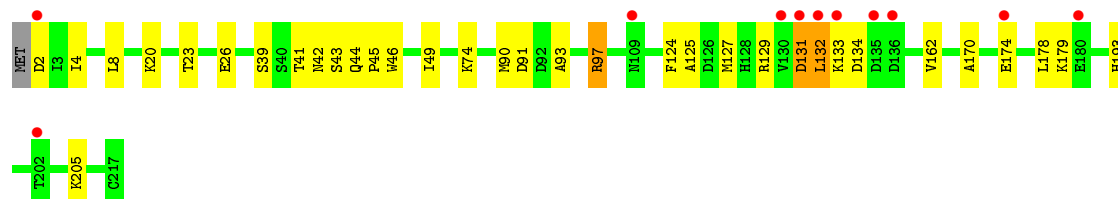
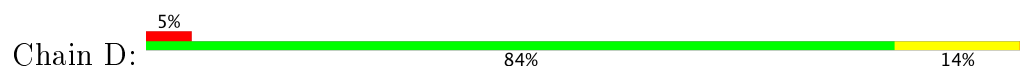
• Molecule 1: OXYGEN-INSENSITIVE NAD(P)H NITROREDUCTASE



• Molecule 1: OXYGEN-INSENSITIVE NAD(P)H NITROREDUCTASE



• Molecule 1: OXYGEN-INSENSITIVE NAD(P)H NITROREDUCTASE



4 Data and refinement statistics

Property	Value	Source
Space group	P 1 21 1	Depositor
Cell constants a, b, c, α , β , γ	52.84Å 79.31Å 96.92Å 90.00° 93.69° 90.00°	Depositor
Resolution (Å)	20.00 – 1.80 14.99 – 1.80	Depositor EDS
% Data completeness (in resolution range)	(Not available) (20.00-1.80) 97.6 (14.99-1.80)	Depositor EDS
R_{merge}	0.07	Depositor
R_{sym}	(Not available)	Depositor
$\langle I/\sigma(I) \rangle$ ¹	5.53 (at 1.79Å)	Xtriage
Refinement program	CNS	Depositor
R, R_{free}	0.188 , 0.217 0.188 , 0.216	Depositor DCC
R_{free} test set	7291 reflections (10.12%)	DCC
Wilson B-factor (Å ²)	15.4	Xtriage
Anisotropy	0.403	Xtriage
Bulk solvent k_{sol} (e/Å ³), B_{sol} (Å ²)	0.43 , 47.6	EDS
L-test for twinning ²	$\langle L \rangle = 0.49$, $\langle L^2 \rangle = 0.33$	Xtriage
Estimated twinning fraction	No twinning to report.	Xtriage
F_o, F_c correlation	0.95	EDS
Total number of atoms	7307	wwPDB-VP
Average B, all atoms (Å ²)	16.0	wwPDB-VP

Xtriage's analysis on translational NCS is as follows: *The analyses of the Patterson function reveals a significant off-origin peak that is 23.62 % of the origin peak, indicating pseudo translational symmetry. The chance of finding a peak of this or larger height randomly in a structure without pseudo translational symmetry is equal to 4.4955e-03. The detected translational NCS is most likely also responsible for the elevated intensity ratio.*

¹ Intensities estimated from amplitudes.

² Theoretical values of $\langle |L| \rangle$, $\langle L^2 \rangle$ for acentric reflections are 0.5, 0.333 respectively for untwinned datasets, and 0.375, 0.2 for perfectly twinned datasets.

5 Model quality [i](#)

5.1 Standard geometry [i](#)

Bond lengths and bond angles in the following residue types are not validated in this section: BEZ, FMN

The Z score for a bond length (or angle) is the number of standard deviations the observed value is removed from the expected value. A bond length (or angle) with $|Z| > 5$ is considered an outlier worth inspection. RMSZ is the root-mean-square of all Z scores of the bond lengths (or angles).

Mol	Chain	Bond lengths		Bond angles	
		RMSZ	$\# Z > 5$	RMSZ	$\# Z > 5$
1	A	0.30	0/1711	0.52	0/2314
1	B	0.31	0/1711	0.54	0/2314
1	C	0.31	0/1711	0.55	0/2314
1	D	0.31	0/1711	0.54	0/2314
All	All	0.31	0/6844	0.54	0/9256

There are no bond length outliers.

There are no bond angle outliers.

There are no chirality outliers.

There are no planarity outliers.

5.2 Too-close contacts [i](#)

In the following table, the Non-H and H(model) columns list the number of non-hydrogen atoms and hydrogen atoms in the chain respectively. The H(added) column lists the number of hydrogen atoms added and optimized by MolProbity. The Clashes column lists the number of clashes within the asymmetric unit, whereas Symm-Clashes lists symmetry related clashes.

Mol	Chain	Non-H	H(model)	H(added)	Clashes	Symm-Clashes
1	A	1677	0	1650	16	0
1	B	1677	0	1650	27	0
1	C	1677	0	1650	18	0
1	D	1677	0	1650	26	0
2	A	31	0	19	1	0
2	B	31	0	19	1	0
2	C	31	0	19	2	0
2	D	31	0	19	0	0
3	A	9	0	5	0	0

Continued on next page...

Continued from previous page...

Mol	Chain	Non-H	H(model)	H(added)	Clashes	Symm-Clashes
3	B	9	0	5	0	0
3	C	9	0	5	0	0
3	D	9	0	5	0	0
4	A	78	0	0	4	0
4	B	109	0	0	10	0
4	C	140	0	0	1	0
4	D	112	0	0	8	0
All	All	7307	0	6696	84	0

The all-atom clashscore is defined as the number of clashes found per 1000 atoms (including hydrogen atoms). The all-atom clashscore for this structure is 6.

All (84) close contacts within the same asymmetric unit are listed below, sorted by their clash magnitude.

Atom-1	Atom-2	Interatomic distance (Å)	Clash overlap (Å)
1:B:19:SER:HA	1:D:131:ASP:HB3	1.49	0.93
1:B:152:LEU:HD11	4:B:526:HOH:O	1.69	0.91
1:B:12:SER:HA	4:B:535:HOH:O	1.73	0.88
1:D:42:ASN:N	4:D:530:HOH:O	2.05	0.84
1:D:132:LEU:HD22	1:D:134:ASP:HB3	1.60	0.84
2:C:520:FMN:H2'	4:D:530:HOH:O	1.80	0.81
1:B:10:ARG:HG3	4:B:533:HOH:O	1.82	0.80
1:B:162:VAL:HA	4:B:535:HOH:O	1.88	0.73
4:C:540:HOH:O	1:D:124:PHE:HB3	1.91	0.70
1:D:41:THR:N	4:D:530:HOH:O	2.26	0.67
1:B:205:LYS:HE2	4:B:533:HOH:O	1.93	0.67
1:B:19:SER:HA	1:D:131:ASP:CB	2.24	0.64
1:D:2:ASP:OD2	1:D:4:ILE:HB	1.96	0.64
1:D:127:MET:HA	1:D:131:ASP:OD2	2.02	0.59
1:A:74:LYS:HG3	4:A:547:HOH:O	2.02	0.58
1:C:55:GLU:H	1:C:55:GLU:CD	2.08	0.57
1:D:179:LYS:HB2	4:D:582:HOH:O	2.06	0.56
1:B:170:ALA:O	1:B:174:GLU:HG3	2.06	0.56
1:A:68:TYR:HE1	1:B:124:PHE:HE1	1.54	0.56
1:C:130:VAL:HA	1:C:133:LYS:HE3	1.88	0.56
1:C:21:LYS:NZ	1:C:57:LYS:NZ	2.54	0.55
1:D:39:SER:O	4:D:530:HOH:O	2.19	0.54
1:A:179:LYS:HB2	4:A:551:HOH:O	2.09	0.53
1:A:125:ALA:O	1:A:129:ARG:HG3	2.09	0.53
1:C:130:VAL:O	1:C:133:LYS:HE3	2.08	0.53
1:C:170:ALA:O	1:C:174:GLU:HG3	2.09	0.53

Continued on next page...

Continued from previous page...

Atom-1	Atom-2	Interatomic distance (Å)	Clash overlap (Å)
1:A:130:VAL:O	1:A:133:LYS:HE3	2.08	0.53
1:A:91:ASP:OD2	1:A:93:ALA:HB3	2.09	0.53
1:B:49:ILE:HD11	1:B:178:LEU:HD21	1.92	0.52
1:B:127:MET:O	1:B:131:ASP:HB2	2.12	0.50
1:B:125:ALA:O	1:B:129:ARG:HG3	2.12	0.50
1:C:21:LYS:HZ3	1:C:57:LYS:NZ	2.10	0.49
1:A:68:TYR:HE1	1:B:124:PHE:CE1	2.31	0.49
1:D:97:ARG:HD2	4:D:547:HOH:O	2.12	0.49
1:D:132:LEU:HD13	1:D:134:ASP:CG	2.34	0.48
1:D:74:LYS:HD3	1:D:162:VAL:HG11	1.96	0.48
1:B:179:LYS:HD3	1:B:179:LYS:C	2.34	0.47
1:C:21:LYS:NZ	1:C:57:LYS:HZ3	2.10	0.47
1:A:197:GLU:OE1	1:A:197:GLU:N	2.47	0.47
1:C:135:ASP:O	1:C:139:MET:HG3	2.14	0.47
1:D:8:LEU:O	1:D:205:LYS:HD2	2.14	0.47
1:D:90:MET:HB3	1:D:129:ARG:HD3	1.96	0.47
1:C:55:GLU:O	1:C:59:ARG:HG3	2.14	0.47
1:B:6:VAL:HB	4:B:526:HOH:O	2.15	0.47
1:A:174:GLU:HG3	4:A:572:HOH:O	2.15	0.46
1:B:6:VAL:HG21	4:B:571:HOH:O	2.16	0.46
1:B:49:ILE:HB	1:B:83:VAL:HB	1.98	0.45
1:C:64:ALA:O	1:C:69:VAL:HA	2.16	0.45
1:A:13:THR:OG1	1:A:160:ASP:HB3	2.16	0.45
1:B:10:ARG:NH1	4:B:533:HOH:O	2.49	0.45
1:B:163:PRO:HG2	2:B:519:FMN:C9	2.47	0.45
1:B:90:MET:HB3	1:B:129:ARG:HD3	1.98	0.45
1:C:163:PRO:HG2	2:C:520:FMN:C9	2.46	0.45
4:B:597:HOH:O	1:D:132:LEU:HD12	2.18	0.44
1:A:2:ASP:N	4:A:593:HOH:O	2.50	0.44
1:D:43:SER:O	1:D:44:GLN:C	2.56	0.43
1:D:91:ASP:OD2	1:D:93:ALA:HB3	2.18	0.43
1:C:23:THR:OG1	1:C:26:GLU:HG3	2.18	0.43
1:B:7:ALA:N	4:B:526:HOH:O	2.51	0.43
1:D:49:ILE:HD11	1:D:178:LEU:HD21	2.01	0.43
1:A:86:ALA:HB2	1:A:143:VAL:HG21	2.00	0.43
1:B:96:GLU:OE2	1:B:118:HIS:HE1	2.01	0.43
1:C:74:LYS:HD3	1:C:162:VAL:HG11	2.01	0.43
1:D:132:LEU:O	1:D:133:LYS:HB2	2.19	0.43
1:D:23:THR:OG1	1:D:26:GLU:HG3	2.19	0.42
1:A:162:VAL:O	1:A:162:VAL:HG13	2.19	0.42
1:B:73:ARG:HE	1:B:73:ARG:HA	1.83	0.42

Continued on next page...

Continued from previous page...

Atom-1	Atom-2	Interatomic distance (Å)	Clash overlap (Å)
1:D:125:ALA:O	1:D:129:ARG:HG3	2.20	0.42
1:C:43:SER:O	1:C:44:GLN:C	2.56	0.42
1:D:20:LYS:HB3	1:D:193:HIS:CD2	2.54	0.42
1:D:2:ASP:N	4:D:610:HOH:O	2.52	0.42
1:C:21:LYS:HZ3	1:C:57:LYS:HZ3	1.67	0.41
1:B:213:ILE:HG13	1:B:214:VAL:HG23	2.01	0.41
1:C:49:ILE:HB	1:C:83:VAL:HB	2.03	0.41
1:A:163:PRO:HG2	2:A:518:FMN:C9	2.50	0.41
1:B:64:ALA:O	1:B:69:VAL:HA	2.21	0.41
1:C:125:ALA:O	1:C:129:ARG:HG3	2.20	0.41
1:D:41:THR:CA	4:D:530:HOH:O	2.68	0.41
1:C:14:LYS:HA	1:C:74:LYS:HE3	2.03	0.41
1:A:23:THR:OG1	1:A:26:GLU:HG3	2.21	0.41
1:B:162:VAL:O	1:B:190:PRO:HD2	2.21	0.41
1:A:43:SER:O	1:A:44:GLN:C	2.60	0.40
1:B:43:SER:O	1:B:44:GLN:C	2.60	0.40
1:D:170:ALA:O	1:D:174:GLU:HG3	2.22	0.40

There are no symmetry-related clashes.

5.3 Torsion angles

5.3.1 Protein backbone

In the following table, the Percentiles column shows the percent Ramachandran outliers of the chain as a percentile score with respect to all X-ray entries followed by that with respect to entries of similar resolution.

The Analysed column shows the number of residues for which the backbone conformation was analysed, and the total number of residues.

Mol	Chain	Analysed	Favoured	Allowed	Outliers	Percentiles	
1	A	214/217 (99%)	212 (99%)	2 (1%)	0	100	100
1	B	214/217 (99%)	212 (99%)	2 (1%)	0	100	100
1	C	214/217 (99%)	213 (100%)	1 (0%)	0	100	100
1	D	214/217 (99%)	208 (97%)	5 (2%)	1 (0%)	32	17
All	All	856/868 (99%)	845 (99%)	10 (1%)	1 (0%)	55	38

All (1) Ramachandran outliers are listed below:

Mol	Chain	Res	Type
1	D	131	ASP

5.3.2 Protein sidechains [i](#)

In the following table, the Percentiles column shows the percent sidechain outliers of the chain as a percentile score with respect to all X-ray entries followed by that with respect to entries of similar resolution.

The Analysed column shows the number of residues for which the sidechain conformation was analysed, and the total number of residues.

Mol	Chain	Analysed	Rotameric	Outliers	Percentiles	
1	A	179/180 (99%)	177 (99%)	2 (1%)	78	72
1	B	179/180 (99%)	177 (99%)	2 (1%)	78	72
1	C	179/180 (99%)	178 (99%)	1 (1%)	89	87
1	D	179/180 (99%)	175 (98%)	4 (2%)	57	44
All	All	716/720 (99%)	707 (99%)	9 (1%)	73	66

All (9) residues with a non-rotameric sidechain are listed below:

Mol	Chain	Res	Type
1	A	46	TRP
1	A	197	GLU
1	B	46	TRP
1	B	73	ARG
1	C	46	TRP
1	D	45	PRO
1	D	46	TRP
1	D	97	ARG
1	D	132	LEU

Some sidechains can be flipped to improve hydrogen bonding and reduce clashes. All (1) such sidechains are listed below:

Mol	Chain	Res	Type
1	B	118	HIS

5.3.3 RNA [i](#)

There are no RNA molecules in this entry.

5.4 Non-standard residues in protein, DNA, RNA chains [i](#)

There are no non-standard protein/DNA/RNA residues in this entry.

5.5 Carbohydrates [i](#)

There are no carbohydrates in this entry.

5.6 Ligand geometry [i](#)

8 ligands are modelled in this entry.

In the following table, the Counts columns list the number of bonds (or angles) for which Mogul statistics could be retrieved, the number of bonds (or angles) that are observed in the model and the number of bonds (or angles) that are defined in the Chemical Component Dictionary. The Link column lists molecule types, if any, to which the group is linked. The Z score for a bond length (or angle) is the number of standard deviations the observed value is removed from the expected value. A bond length (or angle) with $|Z| > 2$ is considered an outlier worth inspection. RMSZ is the root-mean-square of all Z scores of the bond lengths (or angles).

Mol	Type	Chain	Res	Link	Bond lengths			Bond angles		
					Counts	RMSZ	# $ Z > 2$	Counts	RMSZ	# $ Z > 2$
2	FMN	A	518	-	31,33,33	2.15	7 (22%)	38,50,50	4.03	18 (47%)
3	BEZ	A	524	-	6,9,9	1.49	1 (16%)	8,11,11	0.63	0
2	FMN	B	519	-	31,33,33	2.04	8 (25%)	38,50,50	3.96	17 (44%)
3	BEZ	B	525	-	6,9,9	1.54	1 (16%)	8,11,11	0.68	0
2	FMN	C	520	-	31,33,33	2.02	7 (22%)	38,50,50	3.97	16 (42%)
3	BEZ	C	522	-	6,9,9	1.45	1 (16%)	8,11,11	0.64	0
2	FMN	D	521	-	31,33,33	2.09	7 (22%)	38,50,50	3.88	18 (47%)
3	BEZ	D	523	-	6,9,9	1.50	1 (16%)	8,11,11	0.67	0

In the following table, the Chirals column lists the number of chiral outliers, the number of chiral centers analysed, the number of these observed in the model and the number defined in the Chemical Component Dictionary. Similar counts are reported in the Torsion and Rings columns. '-' means no outliers of that kind were identified.

Mol	Type	Chain	Res	Link	Chirals	Torsions	Rings
2	FMN	A	518	-	-	0/16/18/18	0/3/3/3
3	BEZ	A	524	-	-	0/0/4/4	0/1/1/1
2	FMN	B	519	-	-	0/16/18/18	0/3/3/3
3	BEZ	B	525	-	-	0/0/4/4	0/1/1/1
2	FMN	C	520	-	-	0/16/18/18	0/3/3/3

Continued on next page...

Continued from previous page...

Mol	Type	Chain	Res	Link	Chirals	Torsions	Rings
3	BEZ	C	522	-	-	0/0/4/4	0/1/1/1
2	FMN	D	521	-	-	0/16/18/18	0/3/3/3
3	BEZ	D	523	-	-	0/0/4/4	0/1/1/1

All (33) bond length outliers are listed below:

Mol	Chain	Res	Type	Atoms	Z	Observed(Å)	Ideal(Å)
2	C	520	FMN	P-O2P	-2.03	1.46	1.54
2	A	518	FMN	C2-N3	2.00	1.42	1.38
2	B	519	FMN	C5A-N5	2.02	1.38	1.35
2	B	519	FMN	C2-N3	2.02	1.42	1.38
2	D	521	FMN	C2-N3	2.17	1.42	1.38
2	C	520	FMN	C2'-C3'	2.21	1.57	1.53
2	C	520	FMN	C4A-C10	2.47	1.45	1.41
2	D	521	FMN	C2'-C3'	2.48	1.58	1.53
2	B	519	FMN	C2'-C3'	2.59	1.58	1.53
2	A	518	FMN	C4A-C10	2.61	1.45	1.41
3	C	522	BEZ	C6-C1	2.64	1.44	1.39
3	A	524	BEZ	C6-C1	2.65	1.45	1.39
2	A	518	FMN	C2'-C3'	2.73	1.58	1.53
3	D	523	BEZ	C6-C1	2.76	1.45	1.39
2	D	521	FMN	C4A-C10	2.79	1.45	1.41
2	B	519	FMN	C4A-C10	2.81	1.45	1.41
2	C	520	FMN	C1'-N10	2.83	1.51	1.48
3	B	525	BEZ	C6-C1	2.90	1.45	1.39
2	A	518	FMN	C4-N3	3.11	1.38	1.33
2	C	520	FMN	C4-N3	3.20	1.38	1.33
2	B	519	FMN	C4-N3	3.28	1.39	1.33
2	D	521	FMN	C4-N3	3.35	1.39	1.33
2	B	519	FMN	C1'-N10	3.40	1.51	1.48
2	D	521	FMN	C1'-N10	3.55	1.52	1.48
2	A	518	FMN	C1'-N10	3.71	1.52	1.48
2	D	521	FMN	C4-C4A	4.90	1.50	1.41
2	C	520	FMN	C4-C4A	5.00	1.50	1.41
2	B	519	FMN	C4-C4A	5.03	1.50	1.41
2	A	518	FMN	C4-C4A	5.15	1.51	1.41
2	B	519	FMN	C9A-N10	5.70	1.46	1.38
2	D	521	FMN	C9A-N10	6.12	1.46	1.38
2	C	520	FMN	C9A-N10	6.13	1.46	1.38
2	A	518	FMN	C9A-N10	6.55	1.47	1.38

All (69) bond angle outliers are listed below:

Mol	Chain	Res	Type	Atoms	Z	Observed(°)	Ideal(°)
2	A	518	FMN	C4A-C10-N10	-8.69	114.48	120.52
2	D	521	FMN	C4A-C10-N10	-8.26	114.79	120.52
2	C	520	FMN	C4A-C10-N10	-8.13	114.87	120.52
2	B	519	FMN	C4A-C10-N10	-8.00	114.96	120.52
2	A	518	FMN	C9A-C5A-N5	-5.33	114.31	122.24
2	C	520	FMN	C9A-C5A-N5	-5.19	114.51	122.24
2	D	521	FMN	C9A-C5A-N5	-5.17	114.53	122.24
2	B	519	FMN	C9A-C5A-N5	-5.15	114.57	122.24
2	C	520	FMN	C4-C4A-C10	-4.50	116.32	119.96
2	B	519	FMN	C4-C4A-C10	-4.36	116.43	119.96
2	C	520	FMN	C1'-N10-C10	-4.36	114.03	118.50
2	B	519	FMN	C4A-C4-N3	-4.36	117.28	123.48
2	D	521	FMN	C4A-C4-N3	-4.29	117.38	123.48
2	A	518	FMN	C4A-C4-N3	-4.27	117.41	123.48
2	C	520	FMN	C4A-C4-N3	-4.22	117.47	123.48
2	A	518	FMN	C1'-N10-C10	-4.03	114.37	118.50
2	A	518	FMN	C4-C4A-C10	-3.95	116.77	119.96
2	B	519	FMN	C1'-N10-C10	-3.52	114.89	118.50
2	D	521	FMN	C4-C4A-C10	-3.35	117.25	119.96
2	A	518	FMN	C5A-C9A-N10	-3.30	115.21	117.66
2	D	521	FMN	C1'-N10-C10	-3.18	115.24	118.50
2	D	521	FMN	C5A-C9A-N10	-3.16	115.31	117.66
2	C	520	FMN	C5A-C9A-N10	-3.07	115.38	117.66
2	C	520	FMN	C8M-C8-C9	-3.07	112.65	120.34
2	B	519	FMN	C8M-C8-C9	-3.05	112.69	120.34
2	D	521	FMN	C8M-C8-C9	-3.00	112.81	120.34
2	A	518	FMN	C8M-C8-C9	-2.98	112.88	120.34
2	B	519	FMN	C5A-C9A-N10	-2.86	115.53	117.66
2	D	521	FMN	O3P-P-O5'	-2.60	99.82	106.73
2	B	519	FMN	O3P-P-O5'	-2.60	99.82	106.73
2	B	519	FMN	C10-C4A-N5	-2.60	117.61	120.59
2	D	521	FMN	C10-C4A-N5	-2.58	117.63	120.59
2	B	519	FMN	C1'-C2'-C3'	-2.53	102.59	109.82
2	C	520	FMN	O3P-P-O5'	-2.51	100.06	106.73
2	D	521	FMN	C1'-C2'-C3'	-2.48	102.72	109.82
2	A	518	FMN	C10-C4A-N5	-2.46	117.76	120.59
2	A	518	FMN	C1'-C2'-C3'	-2.42	102.90	109.82
2	A	518	FMN	O3P-P-O5'	-2.38	100.39	106.73
2	C	520	FMN	C10-C4A-N5	-2.29	117.96	120.59
2	A	518	FMN	C9-C9A-C5A	-2.20	115.77	119.58
2	D	521	FMN	C9-C9A-C5A	-2.01	116.11	119.58
2	D	521	FMN	O2'-C2'-C3'	2.32	114.85	109.09
2	B	519	FMN	O5'-P-O1P	2.36	113.09	106.47

Continued on next page...

Continued from previous page...

Mol	Chain	Res	Type	Atoms	Z	Observed(°)	Ideal(°)
2	C	520	FMN	O5'-P-O1P	2.46	113.38	106.47
2	B	519	FMN	O2'-C2'-C3'	2.53	115.38	109.09
2	D	521	FMN	O5'-P-O1P	2.68	114.00	106.47
2	A	518	FMN	O5'-P-O1P	2.75	114.19	106.47
2	A	518	FMN	O2'-C2'-C3'	2.88	116.23	109.09
2	C	520	FMN	O2'-C2'-C3'	2.98	116.47	109.09
2	A	518	FMN	C8M-C8-C7	3.94	128.98	120.72
2	D	521	FMN	C8M-C8-C7	4.03	129.17	120.72
2	C	520	FMN	C8M-C8-C7	4.11	129.35	120.72
2	B	519	FMN	C8M-C8-C7	4.21	129.55	120.72
2	D	521	FMN	C4-C4A-N5	5.59	124.81	118.68
2	A	518	FMN	C4-C4A-N5	5.92	125.17	118.68
2	C	520	FMN	C4-C4A-N5	6.16	125.44	118.68
2	D	521	FMN	C6-C5A-N5	6.22	126.27	118.97
2	B	519	FMN	C4-C4A-N5	6.41	125.71	118.68
2	C	520	FMN	C6-C5A-N5	6.44	126.53	118.97
2	A	518	FMN	C6-C5A-N5	6.46	126.54	118.97
2	B	519	FMN	C6-C5A-N5	6.74	126.88	118.97
2	D	521	FMN	C4-N3-C2	10.12	124.01	115.16
2	A	518	FMN	C4-N3-C2	10.63	124.46	115.16
2	B	519	FMN	C4-N3-C2	10.69	124.51	115.16
2	C	520	FMN	C4-N3-C2	10.81	124.61	115.16
2	B	519	FMN	C4A-N5-C5A	12.84	130.32	116.76
2	C	520	FMN	C4A-N5-C5A	12.99	130.48	116.76
2	D	521	FMN	C4A-N5-C5A	13.35	130.85	116.76
2	A	518	FMN	C4A-N5-C5A	13.57	131.09	116.76

There are no chirality outliers.

There are no torsion outliers.

There are no ring outliers.

3 monomers are involved in 4 short contacts:

Mol	Chain	Res	Type	Clashes	Symm-Clashes
2	A	518	FMN	1	0
2	B	519	FMN	1	0
2	C	520	FMN	2	0

5.7 Other polymers

There are no such residues in this entry.

5.8 Polymer linkage issues

There are no chain breaks in this entry.

6 Fit of model and data ⓘ

6.1 Protein, DNA and RNA chains ⓘ

In the following table, the column labelled ‘#RSRZ> 2’ contains the number (and percentage) of RSRZ outliers, followed by percent RSRZ outliers for the chain as percentile scores relative to all X-ray entries and entries of similar resolution. The OWAB column contains the minimum, median, 95th percentile and maximum values of the occupancy-weighted average B-factor per residue. The column labelled ‘Q< 0.9’ lists the number of (and percentage) of residues with an average occupancy less than 0.9.

Mol	Chain	Analysed	<RSRZ>	#RSRZ>2	OWAB(Å ²)	Q<0.9
1	A	216/217 (99%)	0.04	9 (4%) 37 31	9, 17, 28, 33	0
1	B	216/217 (99%)	-0.06	6 (2%) 53 48	8, 15, 27, 31	0
1	C	216/217 (99%)	-0.18	1 (0%) 90 89	7, 13, 23, 29	0
1	D	216/217 (99%)	0.05	11 (5%) 29 24	6, 14, 27, 42	0
All	All	864/868 (99%)	-0.04	27 (3%) 49 44	6, 15, 27, 42	0

All (27) RSRZ outliers are listed below:

Mol	Chain	Res	Type	RSRZ
1	D	132	LEU	9.1
1	D	131	ASP	8.6
1	D	133	LYS	5.1
1	D	130	VAL	4.2
1	B	123	TYR	3.8
1	B	124	PHE	3.8
1	A	196	VAL	3.4
1	D	174	GLU	3.4
1	A	124	PHE	3.2
1	A	180	GLU	3.1
1	D	136	ASP	2.9
1	D	180	GLU	2.8
1	B	174	GLU	2.7
1	A	174	GLU	2.6
1	A	217	CYS	2.6
1	D	2	ASP	2.6
1	D	109	ASN	2.5
1	A	197	GLU	2.4
1	B	109	ASN	2.2
1	B	217	CYS	2.2
1	A	202	THR	2.2

Continued on next page...

Continued from previous page...

Mol	Chain	Res	Type	RSRZ
1	D	202	THR	2.1
1	C	202	THR	2.1
1	A	67	THR	2.0
1	B	180	GLU	2.0
1	A	123	TYR	2.0
1	D	135	ASP	2.0

6.2 Non-standard residues in protein, DNA, RNA chains [i](#)

There are no non-standard protein/DNA/RNA residues in this entry.

6.3 Carbohydrates [i](#)

There are no carbohydrates in this entry.

6.4 Ligands [i](#)

In the following table, the Atoms column lists the number of modelled atoms in the group and the number defined in the chemical component dictionary. LLDF column lists the quality of electron density of the group with respect to its neighbouring residues in protein, DNA or RNA chains. The B-factors column lists the minimum, median, 95th percentile and maximum values of B factors of atoms in the group. The column labelled 'Q< 0.9' lists the number of atoms with occupancy less than 0.9.

Mol	Type	Chain	Res	Atoms	RSCC	RSR	LLDF	B-factors(\AA^2)	Q<0.9
3	BEZ	B	525	9/9	0.89	0.24	2.34	15,17,18,19	0
3	BEZ	D	523	9/9	0.91	0.12	1.23	11,12,14,15	0
3	BEZ	A	524	9/9	0.93	0.11	0.19	12,13,15,15	0
3	BEZ	C	522	9/9	0.94	0.09	-0.21	11,12,14,14	0
2	FMN	D	521	31/31	0.96	0.09	-0.44	7,10,14,17	0
2	FMN	A	518	31/31	0.96	0.08	-0.54	10,13,16,17	0
2	FMN	B	519	31/31	0.97	0.08	-0.76	8,10,13,15	0
2	FMN	C	520	31/31	0.97	0.08	-0.87	7,9,12,14	0

6.5 Other polymers [i](#)

There are no such residues in this entry.