



# wwPDB X-ray Structure Validation Summary Report ⓘ

Oct 25, 2017 – 11:26 PM EDT

PDB ID : 3KQL  
Title : Three Conformational Snapshots of the Hepatitis C Virus NS3 Helicase Reveal a Ratchet Translocation Mechanism  
Authors : Gu, M.; Rice, C.M.  
Deposited on : unknown  
Resolution : 2.50 Å(reported)

This is a wwPDB X-ray Structure Validation Summary Report for a publicly released PDB entry.

We welcome your comments at [validation@mail.wwpdb.org](mailto:validation@mail.wwpdb.org)

A user guide is available at

<http://wwpdb.org/validation/2016/XrayValidationReportHelp>

with specific help available everywhere you see the ⓘ symbol.

---

The following versions of software and data (see [references ⓘ](#)) were used in the production of this report:

MolProbity : 4.02b-467  
Mogul : 1.7.2 (RC1), CSD as538be (2017)  
Xtriage (Phenix) : 1.9-1692  
EDS : rb-20030345  
Percentile statistics : 20161228.v01 (using entries in the PDB archive December 28th 2016)  
Refmac : 5.8.0135  
CCP4 : 6.5.0  
Ideal geometry (proteins) : Engh & Huber (2001)  
Ideal geometry (DNA, RNA) : Parkinson et al. (1996)  
Validation Pipeline (wwPDB-VP) : rb-20030345

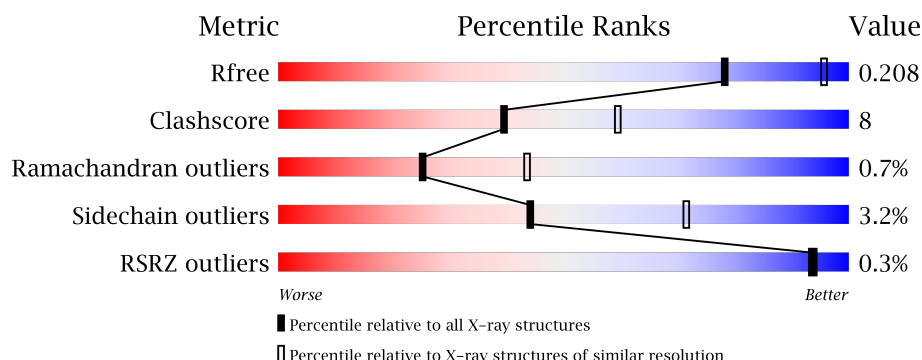
# 1 Overall quality at a glance ⓘ

The following experimental techniques were used to determine the structure:

*X-RAY DIFFRACTION*

The reported resolution of this entry is 2.50 Å.

Percentile scores (ranging between 0-100) for global validation metrics of the entry are shown in the following graphic. The table shows the number of entries on which the scores are based.



Metric	Whole archive (#Entries)	Similar resolution (#Entries, resolution range(Å))
$R_{free}$	100719	3846 (2.50-2.50)
Clashscore	112137	4554 (2.50-2.50)
Ramachandran outliers	110173	4463 (2.50-2.50)
Sidechain outliers	110143	4465 (2.50-2.50)
RSRZ outliers	101464	3876 (2.50-2.50)

The table below summarises the geometric issues observed across the polymeric chains and their fit to the electron density. The red, orange, yellow and green segments on the lower bar indicate the fraction of residues that contain outliers for  $\geq 3$ , 2, 1 and 0 types of geometric quality criteria. A grey segment represents the fraction of residues that are not modelled. The numeric value for each fraction is indicated below the corresponding segment, with a dot representing fractions  $\leq 5\%$ . The upper red bar (where present) indicates the fraction of residues that have poor fit to the electron density. The numeric value is given above the bar.

Mol	Chain	Length	Quality of chain
1	A	437	
1	B	437	
2	E	6	
2	F	6	

## 2 Entry composition

There are 6 unique types of molecules in this entry. The entry contains 7071 atoms, of which 0 are hydrogens and 0 are deuteriums.

In the tables below, the ZeroOcc column contains the number of atoms modelled with zero occupancy, the AltConf column contains the number of residues with at least one atom in alternate conformation and the Trace column contains the number of residues modelled with at most 2 atoms.

- Molecule 1 is a protein called Serine protease/NTPase/helicase NS3.

Mol	Chain	Residues	Atoms					ZeroOcc	AltConf	Trace
1	A	437	Total	C	N	O	S	0	0	0
			3280	2077	556	626	21			
1	B	437	Total	C	N	O	S	0	0	0
			3280	2077	556	626	21			

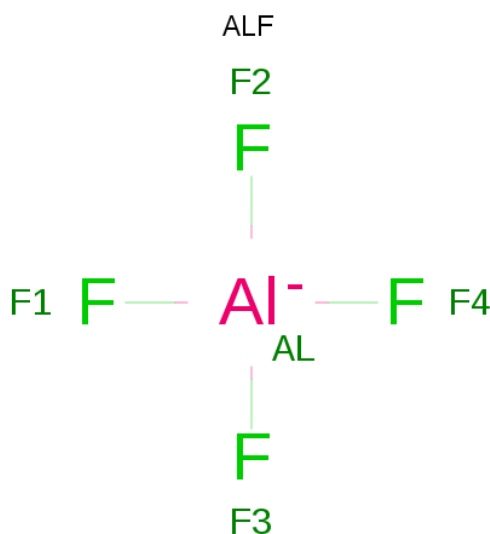
There are 2 discrepancies between the modelled and reference sequences:

Chain	Residue	Modelled	Actual	Comment	Reference
A	625	ALA	-	EXPRESSION TAG	UNP Q9WMX2
B	625	ALA	-	EXPRESSION TAG	UNP Q9WMX2

- Molecule 2 is a DNA chain called 5'-D(\*TP\*TP\*TP\*TP\*TP\*T)-3'.

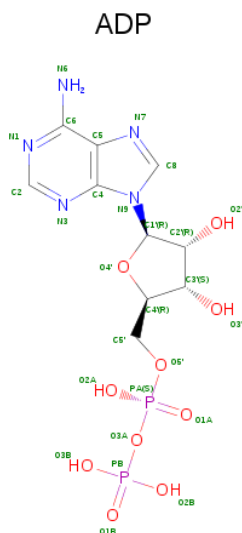
Mol	Chain	Residues	Atoms					ZeroOcc	AltConf	Trace
2	E	6	Total	C	N	O	P	0	0	0
			117	60	12	40	5			
2	F	6	Total	C	N	O	P	0	0	0
			117	60	12	40	5			

- Molecule 3 is TETRAFLUOROALUMINATE ION (three-letter code: ALF) (formula:  $\text{AlF}_4$ ).



Mol	Chain	Residues	Atoms			ZeroOcc	AltConf
3	A	1	Total 5	Al 1	F 4	0	0
3	B	1	Total 5	Al 1	F 4	0	0

- Molecule 4 is ADENOSINE-5'-DIPHOSPHATE (three-letter code: ADP) (formula:  $\text{C}_{10}\text{H}_{15}\text{N}_5\text{O}_{10}\text{P}_2$ ).



Mol	Chain	Residues	Atoms					ZeroOcc	AltConf
4	A	1	Total 27	C 10	N 5	O 10	P 2	0	0

*Continued on next page...*

*Continued from previous page...*

Mol	Chain	Residues	Atoms					ZeroOcc	AltConf
4	B	1	Total	C	N	O	P	0	0
			27	10	5	10	2		

- Molecule 5 is MAGNESIUM ION (three-letter code: MG) (formula: Mg).

Mol	Chain	Residues	Atoms		ZeroOcc	AltConf
5	B	1	Total	Mg	0	0
			1	1		
5	A	1	Total	Mg	0	0
			1	1		

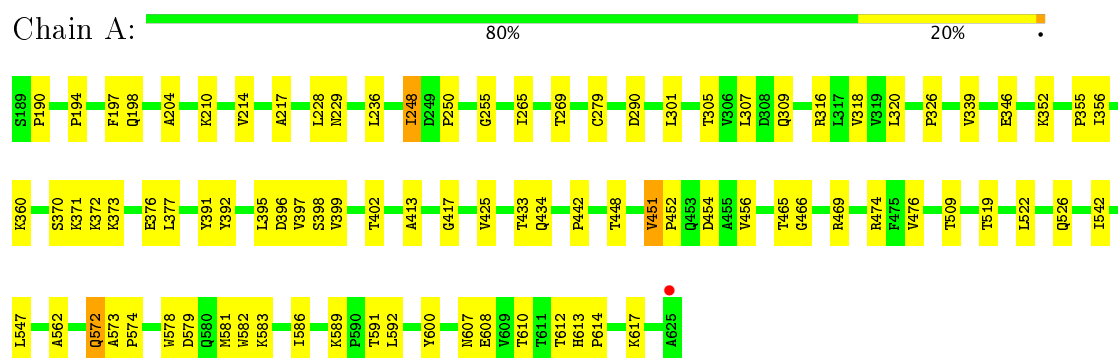
- Molecule 6 is water.

Mol	Chain	Residues	Atoms		ZeroOcc	AltConf
6	A	105	Total	O	0	0
			105	105		
6	B	100	Total	O	0	0
			100	100		
6	E	3	Total	O	0	0
			3	3		
6	F	3	Total	O	0	0
			3	3		

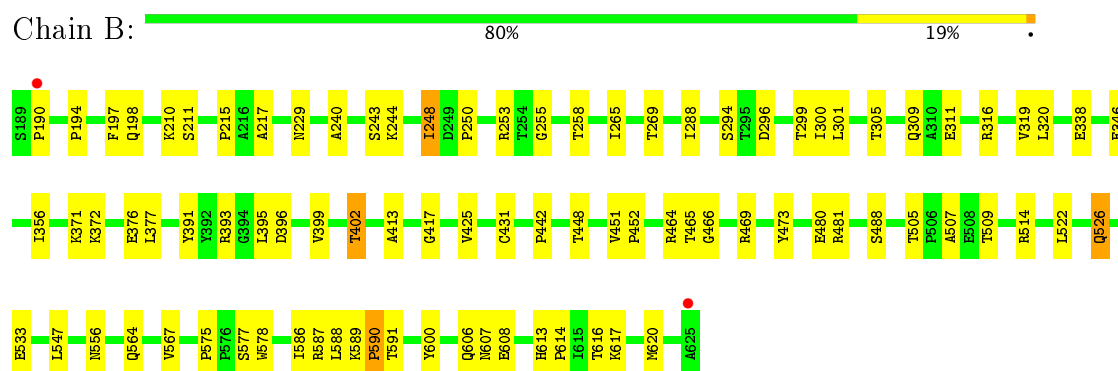
### 3 Residue-property plots

These plots are drawn for all protein, RNA and DNA chains in the entry. The first graphic for a chain summarises the proportions of the various outlier classes displayed in the second graphic. The second graphic shows the sequence view annotated by issues in geometry and electron density. Residues are color-coded according to the number of geometric quality criteria for which they contain at least one outlier: green = 0, yellow = 1, orange = 2 and red = 3 or more. A red dot above a residue indicates a poor fit to the electron density ( $RSRZ > 2$ ). Stretches of 2 or more consecutive residues without any outlier are shown as a green connector. Residues present in the sample, but not in the model, are shown in grey.

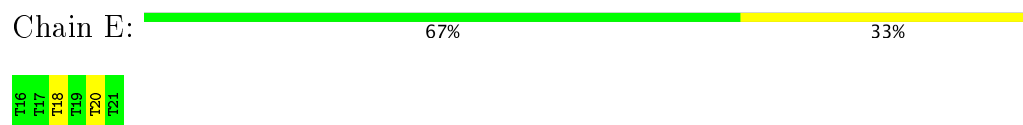
- Molecule 1: Serine protease/NTPase/helicase NS3



- Molecule 1: Serine protease/NTPase/helicase NS3



- Molecule 2: 5'-D(\*TP\*TP\*TP\*TP\*TP\*T)-3'



- Molecule 2: 5'-D(\*TP\*TP\*TP\*TP\*TP\*T)-3'



T16
T17
T18
T19
T20
T21

## 4 Data and refinement statistics

Property	Value	Source
Space group	P 1 2 1	Depositor
Cell constants a, b, c, $\alpha$ , $\beta$ , $\gamma$	43.53Å 75.31Å 144.23Å 90.00° 90.16° 90.00°	Depositor
Resolution (Å)	50.00 – 2.50 33.37 – 2.50	Depositor EDS
% Data completeness (in resolution range)	93.2 (50.00-2.50) 93.0 (33.37-2.50)	Depositor EDS
$R_{merge}$	0.10	Depositor
$R_{sym}$	(Not available)	Depositor
$\langle I/\sigma(I) \rangle$ <sup>1</sup>	2.61 (at 2.51Å)	Xtriage
Refinement program	CNS	Depositor
R, $R_{free}$	0.184 , 0.211 0.182 , 0.208	Depositor DCC
$R_{free}$ test set	1532 reflections (5.32%)	DCC
Wilson B-factor (Å <sup>2</sup> )	28.5	Xtriage
Anisotropy	0.171	Xtriage
Bulk solvent $k_{sol}$ (e/Å <sup>3</sup> ), $B_{sol}$ (Å <sup>2</sup> )	0.33 , 17.0	EDS
L-test for twinning <sup>2</sup>	$\langle  L  \rangle = 0.48$ , $\langle L^2 \rangle = 0.31$	Xtriage
Estimated twinning fraction	0.470 for h,-k,-l	Xtriage
$F_o, F_c$ correlation	0.95	EDS
Total number of atoms	7071	wwPDB-VP
Average B, all atoms (Å <sup>2</sup> )	29.0	wwPDB-VP

Xtriage's analysis on translational NCS is as follows: *The largest off-origin peak in the Patterson function is 5.30% of the height of the origin peak. No significant pseudotranslation is detected.*

<sup>1</sup>Intensities estimated from amplitudes.

<sup>2</sup>Theoretical values of  $\langle |L| \rangle$ ,  $\langle L^2 \rangle$  for acentric reflections are 0.5, 0.333 respectively for untwinned datasets, and 0.375, 0.2 for perfectly twinned datasets.

## 5 Model quality [i](#)

### 5.1 Standard geometry [i](#)

Bond lengths and bond angles in the following residue types are not validated in this section: ALF, MG, ADP

The Z score for a bond length (or angle) is the number of standard deviations the observed value is removed from the expected value. A bond length (or angle) with  $|Z| > 5$  is considered an outlier worth inspection. RMSZ is the root-mean-square of all Z scores of the bond lengths (or angles).

Mol	Chain	Bond lengths		Bond angles	
		RMSZ	$\# Z  > 5$	RMSZ	$\# Z  > 5$
1	A	0.41	0/3361	0.59	0/4592
1	B	0.40	0/3361	0.60	0/4592
2	E	0.45	0/128	0.65	0/196
2	F	0.40	0/128	0.69	0/196
All	All	0.40	0/6978	0.60	0/9576

There are no bond length outliers.

There are no bond angle outliers.

There are no chirality outliers.

There are no planarity outliers.

### 5.2 Too-close contacts [i](#)

In the following table, the Non-H and H(model) columns list the number of non-hydrogen atoms and hydrogen atoms in the chain respectively. The H(added) column lists the number of hydrogen atoms added and optimized by MolProbity. The Clashes column lists the number of clashes within the asymmetric unit, whereas Symm-Clashes lists symmetry related clashes.

Mol	Chain	Non-H	H(model)	H(added)	Clashes	Symm-Clashes
1	A	3280	0	3240	50	0
1	B	3280	0	3240	62	0
2	E	117	0	74	2	0
2	F	117	0	74	5	0
3	A	5	0	0	0	0
3	B	5	0	0	1	0
4	A	27	0	12	0	0
4	B	27	0	12	0	0
5	A	1	0	0	0	0

*Continued on next page...*

*Continued from previous page...*

Mol	Chain	Non-H	H(model)	H(added)	Clashes	Symm-Clashes
5	B	1	0	0	0	0
6	A	105	0	0	4	0
6	B	100	0	0	3	0
6	E	3	0	0	0	0
6	F	3	0	0	0	0
All	All	7071	0	6652	113	0

The all-atom clashscore is defined as the number of clashes found per 1000 atoms (including hydrogen atoms). The all-atom clashscore for this structure is 8.

The worst 5 of 113 close contacts within the same asymmetric unit are listed below, sorted by their clash magnitude.

Atom-1	Atom-2	Interatomic distance (Å)	Clash overlap (Å)
1:A:451:VAL:HG22	1:A:452:PRO:HD2	1.44	0.97
1:B:451:VAL:HG22	1:B:452:PRO:HD2	1.53	0.88
1:B:413:ALA:HB2	2:F:18:DT:H5"	1.70	0.72
1:B:451:VAL:CG2	1:B:452:PRO:HD2	2.19	0.71
1:B:346:GLU:HG2	1:B:356:ILE:HG13	1.73	0.70

There are no symmetry-related clashes.

## 5.3 Torsion angles [i](#)

### 5.3.1 Protein backbone [i](#)

In the following table, the Percentiles column shows the percent Ramachandran outliers of the chain as a percentile score with respect to all X-ray entries followed by that with respect to entries of similar resolution.

The Analysed column shows the number of residues for which the backbone conformation was analysed, and the total number of residues.

Mol	Chain	Analysed	Favoured	Allowed	Outliers	Percentiles	
1	A	435/437 (100%)	412 (95%)	20 (5%)	3 (1%)	25	43
1	B	435/437 (100%)	411 (94%)	21 (5%)	3 (1%)	25	43
All	All	870/874 (100%)	823 (95%)	41 (5%)	6 (1%)	25	43

5 of 6 Ramachandran outliers are listed below:

Mol	Chain	Res	Type
1	A	248	ILE
1	A	417	GLY
1	B	417	GLY
1	A	279	CYS
1	B	590	PRO

### 5.3.2 Protein sidechains ⓘ

In the following table, the Percentiles column shows the percent sidechain outliers of the chain as a percentile score with respect to all X-ray entries followed by that with respect to entries of similar resolution.

The Analysed column shows the number of residues for which the sidechain conformation was analysed, and the total number of residues.

Mol	Chain	Analysed	Rotameric	Outliers	Percentiles	
1	A	356/356 (100%)	346 (97%)	10 (3%)	49	76
1	B	356/356 (100%)	343 (96%)	13 (4%)	39	66
All	All	712/712 (100%)	689 (97%)	23 (3%)	44	71

5 of 23 residues with a non-rotameric sidechain are listed below:

Mol	Chain	Res	Type
1	B	301	LEU
1	B	377	LEU
1	B	556	ASN
1	B	316	ARG
1	B	402	THR

Some sidechains can be flipped to improve hydrogen bonding and reduce clashes. 5 of 10 such sidechains are listed below:

Mol	Chain	Res	Type
1	B	293	HIS
1	B	335	ASN
1	B	518	ASN
1	B	246	HIS
1	B	434	GLN

### 5.3.3 RNA ⓘ

There are no RNA molecules in this entry.

## 5.4 Non-standard residues in protein, DNA, RNA chains [i](#)

There are no non-standard protein/DNA/RNA residues in this entry.

## 5.5 Carbohydrates [i](#)

There are no carbohydrates in this entry.

## 5.6 Ligand geometry [i](#)

Of 6 ligands modelled in this entry, 2 are monoatomic - leaving 4 for Mogul analysis.

In the following table, the Counts columns list the number of bonds (or angles) for which Mogul statistics could be retrieved, the number of bonds (or angles) that are observed in the model and the number of bonds (or angles) that are defined in the Chemical Component Dictionary. The Link column lists molecule types, if any, to which the group is linked. The Z score for a bond length (or angle) is the number of standard deviations the observed value is removed from the expected value. A bond length (or angle) with  $|Z| > 2$  is considered an outlier worth inspection. RMSZ is the root-mean-square of all Z scores of the bond lengths (or angles).

Mol	Type	Chain	Res	Link	Bond lengths			Bond angles		
					Counts	RMSZ	# $ Z  > 2$	Counts	RMSZ	# $ Z  > 2$
3	ALF	A	1	-	0,4,4	0.00	-	0,6,6	0.00	-
4	ADP	A	2	5	25,29,29	1.21	3 (12%)	24,45,45	2.49	2 (8%)
3	ALF	B	1	-	0,4,4	0.00	-	0,6,6	0.00	-
4	ADP	B	2	5	25,29,29	1.17	3 (12%)	24,45,45	2.56	2 (8%)

In the following table, the Chirals column lists the number of chiral outliers, the number of chiral centers analysed, the number of these observed in the model and the number defined in the Chemical Component Dictionary. Similar counts are reported in the Torsion and Rings columns. '-' means no outliers of that kind were identified.

Mol	Type	Chain	Res	Link	Chirals	Torsions	Rings
3	ALF	A	1	-	-	0/0/0/0	0/0/0/0
4	ADP	A	2	5	-	0/12/32/32	0/3/3/3
3	ALF	B	1	-	-	0/0/0/0	0/0/0/0
4	ADP	B	2	5	-	0/12/32/32	0/3/3/3

The worst 5 of 6 bond length outliers are listed below:

Mol	Chain	Res	Type	Atoms	Z	Observed(Å)	Ideal(Å)
4	B	2	ADP	C5-N7	-2.47	1.31	1.39
4	A	2	ADP	C5-N7	-2.24	1.31	1.39

*Continued on next page...*

*Continued from previous page...*

Mol	Chain	Res	Type	Atoms	Z	Observed(Å)	Ideal(Å)
4	A	2	ADP	PB-O3A	-2.12	1.56	1.60
4	B	2	ADP	PB-O3A	-2.02	1.56	1.60
4	B	2	ADP	O4'-C1'	3.34	1.45	1.41

All (4) bond angle outliers are listed below:

Mol	Chain	Res	Type	Atoms	Z	Observed(°)	Ideal(°)
4	B	2	ADP	N3-C2-N1	-11.89	118.50	128.86
4	A	2	ADP	N3-C2-N1	-11.53	118.82	128.86
4	A	2	ADP	C4-C5-N7	-2.23	107.26	109.41
4	B	2	ADP	C4-C5-N7	-2.13	107.35	109.41

There are no chirality outliers.

There are no torsion outliers.

There are no ring outliers.

1 monomer is involved in 1 short contact:

Mol	Chain	Res	Type	Clashes	Symm-Clashes
3	B	1	ALF	1	0

## 5.7 Other polymers [i](#)

There are no such residues in this entry.

## 5.8 Polymer linkage issues [i](#)

There are no chain breaks in this entry.

## 6 Fit of model and data [i](#)

### 6.1 Protein, DNA and RNA chains [i](#)

In the following table, the column labelled ‘#RSRZ> 2’ contains the number (and percentage) of RSRZ outliers, followed by percent RSRZ outliers for the chain as percentile scores relative to all X-ray entries and entries of similar resolution. The OWAB column contains the minimum, median, 95<sup>th</sup> percentile and maximum values of the occupancy-weighted average B-factor per residue. The column labelled ‘Q< 0.9’ lists the number of (and percentage) of residues with an average occupancy less than 0.9.

Mol	Chain	Analysed	<RSRZ>	#RSRZ>2	OWAB(Å <sup>2</sup> )	Q<0.9
1	A	437/437 (100%)	-0.52	1 (0%) 94 95	10, 28, 46, 65	0
1	B	437/437 (100%)	-0.54	2 (0%) 90 91	11, 27, 46, 70	0
2	E	6/6 (100%)	-0.13	0 100 100	32, 40, 52, 66	0
2	F	6/6 (100%)	-0.13	0 100 100	32, 40, 52, 64	0
All	All	886/886 (100%)	-0.53	3 (0%) 93 94	10, 28, 47, 70	0

All (3) RSRZ outliers are listed below:

Mol	Chain	Res	Type	RSRZ
1	A	625	ALA	4.0
1	B	625	ALA	3.7
1	B	190	PRO	2.4

### 6.2 Non-standard residues in protein, DNA, RNA chains [i](#)

There are no non-standard protein/DNA/RNA residues in this entry.

### 6.3 Carbohydrates [i](#)

There are no carbohydrates in this entry.

### 6.4 Ligands [i](#)

In the following table, the Atoms column lists the number of modelled atoms in the group and the number defined in the chemical component dictionary. LLDF column lists the quality of electron density of the group with respect to its neighbouring residues in protein, DNA or RNA chains. The B-factors column lists the minimum, median, 95<sup>th</sup> percentile and maximum values of B factors of atoms in the group. The column labelled ‘Q< 0.9’ lists the number of atoms with occupancy less than 0.9.

Mol	Type	Chain	Res	Atoms	RSCC	RSR	LLDF	B-factors( $\text{\AA}^2$ )	Q<0.9
3	ALF	A	1	5/5	0.99	0.12	1.89	22,24,26,26	0
5	MG	A	3	1/1	0.97	0.16	1.78	18,18,18,18	0
4	ADP	B	2	27/27	0.98	0.11	0.16	11,28,29,31	0
3	ALF	B	1	5/5	0.99	0.11	0.02	27,28,29,31	0
5	MG	B	3	1/1	0.98	0.12	-0.06	21,21,21,21	0
4	ADP	A	2	27/27	0.98	0.11	-0.14	11,29,31,32	0

## 6.5 Other polymers [i](#)

There are no such residues in this entry.