



Full wwPDB X-ray Structure Validation Report ⓘ

Sep 13, 2017 – 11:29 PM EDT

PDB ID : 5KYT
Title : Structure of Photinus pyralis Luciferase red light emitting variant
Authors : Gulick, A.M.
Deposited on : unknown
Resolution : 2.00 Å(reported)

This is a Full wwPDB X-ray Structure Validation Report for a publicly released PDB entry.

We welcome your comments at validation@mail.wwpdb.org

A user guide is available at

<http://wwpdb.org/validation/2016/XrayValidationReportHelp>

with specific help available everywhere you see the ⓘ symbol.

The following versions of software and data (see [references ⓘ](#)) were used in the production of this report:

MolProbity : 4.02b-467
Mogul : 1.7.2 (RC1), CSD as538be (2017)
Xtriage (Phenix) : 1.9-1692
EDS : rb-20029824
Percentile statistics : 20161228.v01 (using entries in the PDB archive December 28th 2016)
Refmac : 5.8.0135
CCP4 : 6.5.0
Ideal geometry (proteins) : Engh & Huber (2001)
Ideal geometry (DNA, RNA) : Parkinson et al. (1996)
Validation Pipeline (wwPDB-VP) : rb-20029824

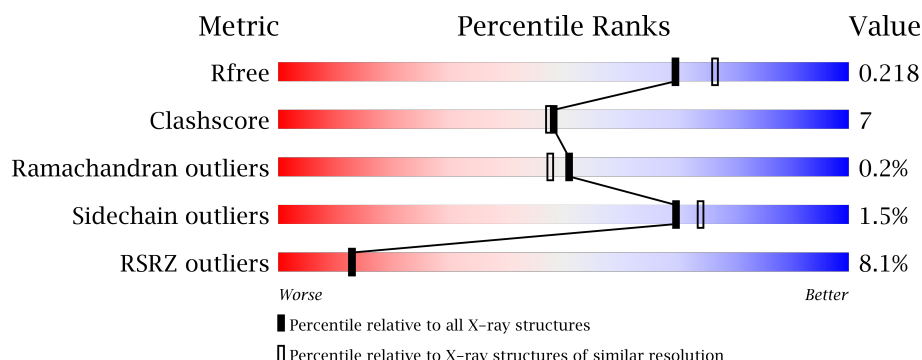
1 Overall quality at a glance

The following experimental techniques were used to determine the structure:

X-RAY DIFFRACTION

The reported resolution of this entry is 2.00 Å.

Percentile scores (ranging between 0-100) for global validation metrics of the entry are shown in the following graphic. The table shows the number of entries on which the scores are based.



Metric	Whole archive (#Entries)	Similar resolution (#Entries, resolution range(Å))
R_{free}	100719	6609 (2.00-2.00)
Clashscore	112137	7775 (2.00-2.00)
Ramachandran outliers	110173	7679 (2.00-2.00)
Sidechain outliers	110143	7678 (2.00-2.00)
RSRZ outliers	101464	6696 (2.00-2.00)

The table below summarises the geometric issues observed across the polymeric chains and their fit to the electron density. The red, orange, yellow and green segments on the lower bar indicate the fraction of residues that contain outliers for ≥ 3 , 2, 1 and 0 types of geometric quality criteria. A grey segment represents the fraction of residues that are not modelled. The numeric value for each fraction is indicated below the corresponding segment, with a dot representing fractions $\leq 5\%$. The upper red bar (where present) indicates the fraction of residues that have poor fit to the electron density. The numeric value is given above the bar.

Mol	Chain	Length	Quality of chain
1	A	550	<div> <div>11%</div> <div>84%</div> <div>12%</div> <div>••</div> </div>
1	B	550	<div> <div>5%</div> <div>85%</div> <div>13%</div> <div>•</div> </div>

The following table lists non-polymeric compounds, carbohydrate monomers and non-standard residues in protein, DNA, RNA chains that are outliers for geometric or electron-density-fit criteria:

Mol	Type	Chain	Res	Chirality	Geometry	Clashes	Electron density
3	EDO	B	603	-	-	-	X

2 Entry composition [i](#)

There are 4 unique types of molecules in this entry. The entry contains 9046 atoms, of which 0 are hydrogens and 0 are deuteriums.

In the tables below, the ZeroOcc column contains the number of atoms modelled with zero occupancy, the AltConf column contains the number of residues with at least one atom in alternate conformation and the Trace column contains the number of residues modelled with at most 2 atoms.

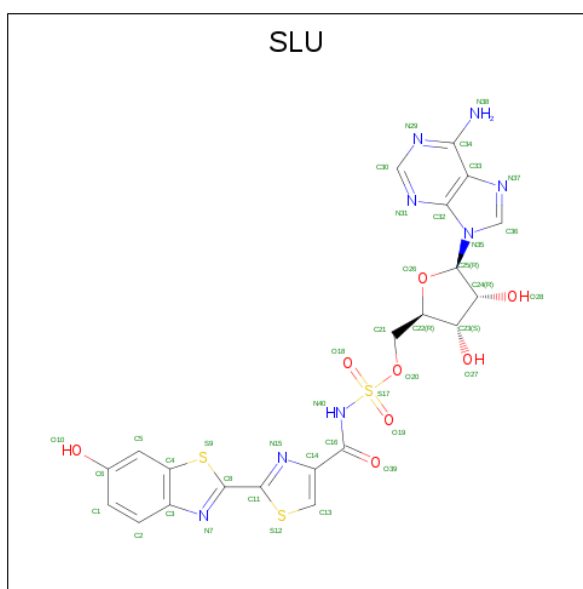
- Molecule 1 is a protein called Luciferin 4-monooxygenase.

Mol	Chain	Residues	Atoms					ZeroOcc	AltConf	Trace
1	A	532	Total	C	N	O	S	0	4	0
			4061	2626	668	750	17			
1	B	543	Total	C	N	O	S	0	2	0
			4183	2701	690	775	17			

There are 2 discrepancies between the modelled and reference sequences:

Chain	Residue	Modelled	Actual	Comment	Reference
A	284	THR	SER	engineered mutation	UNP P08659
B	284	THR	SER	engineered mutation	UNP P08659

- Molecule 2 is 5'-O-[N-(DEHYDROLUCIFERYL)-SULFAMOYL] ADENOSINE (three-letter code: SLU) (formula: C₂₁H₁₈N₈O₈S₃).



Continued from previous page...

Mol	Chain	Residues	Atoms					ZeroOcc	AltConf
2	B	1	Total	C	N	O	S	0	0
			40	21	8	8	3		

- Molecule 3 is 1,2-ETHANEDIOL (three-letter code: EDO) (formula: C₂H₆O₂).



Mol	Chain	Residues	Atoms			ZeroOcc	AltConf
3	A	1	Total	C	O	0	0
			4	2	2		
3	B	1	Total	C	O	0	0
			4	2	2		
3	B	1	Total	C	O	0	0
			4	2	2		
3	B	1	Total	C	O	0	0
			4	2	2		
3	B	1	Total	C	O	0	0
			4	2	2		
3	B	1	Total	C	O	0	0
			4	2	2		

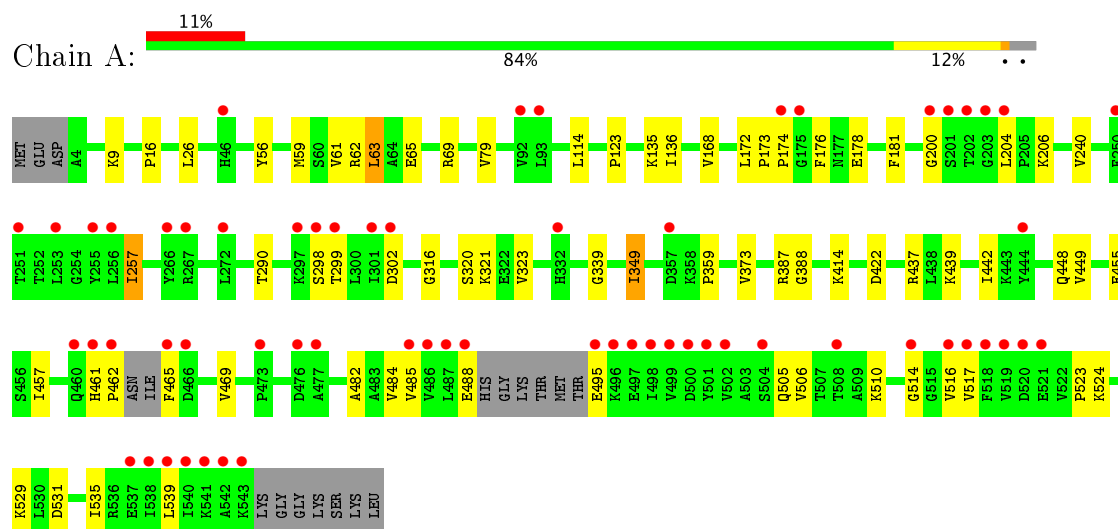
- Molecule 4 is water.

Mol	Chain	Residues	Atoms		ZeroOcc	AltConf
4	A	356	Total	O	0	0
			356	356		
4	B	342	Total	O	0	0
			342	342		

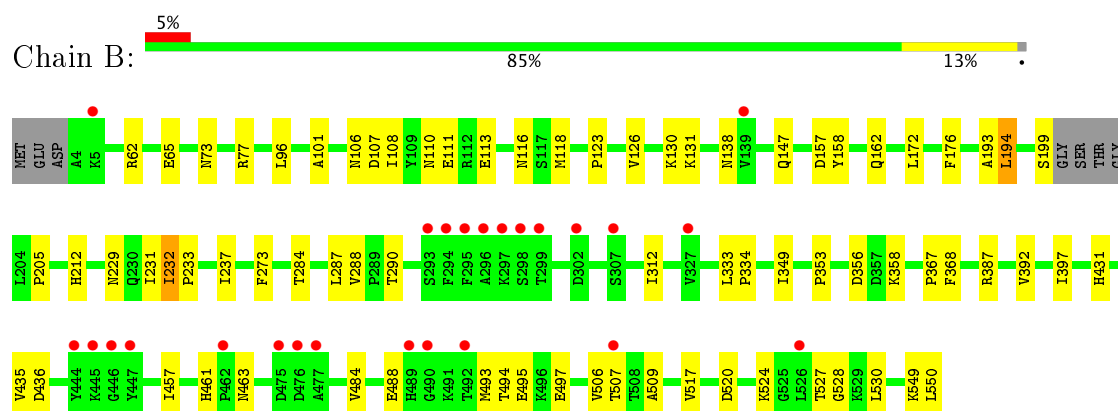
3 Residue-property plots [i](#)

These plots are drawn for all protein, RNA and DNA chains in the entry. The first graphic for a chain summarises the proportions of the various outlier classes displayed in the second graphic. The second graphic shows the sequence view annotated by issues in geometry and electron density. Residues are color-coded according to the number of geometric quality criteria for which they contain at least one outlier: green = 0, yellow = 1, orange = 2 and red = 3 or more. A red dot above a residue indicates a poor fit to the electron density ($RSRZ > 2$). Stretches of 2 or more consecutive residues without any outlier are shown as a green connector. Residues present in the sample, but not in the model, are shown in grey.

- Molecule 1: Luciferin 4-monooxygenase



- Molecule 1: Luciferin 4-monooxygenase



4 Data and refinement statistics

Property	Value	Source
Space group	P 31 2 1	Depositor
Cell constants a, b, c, α , β , γ	92.59 Å 92.59 Å 294.46 Å 90.00° 90.00° 120.00°	Depositor
Resolution (Å)	33.45 – 2.00 33.45 – 2.00	Depositor EDS
% Data completeness (in resolution range)	93.1 (33.45-2.00) 93.1 (33.45-2.00)	Depositor EDS
R_{merge}	0.09	Depositor
R_{sym}	(Not available)	Depositor
$\langle I/\sigma(I) \rangle$ ¹	1.41 (at 2.00 Å)	Xtriage
Refinement program	PHENIX 1.9_1692	Depositor
R, R_{free}	0.178 , 0.218 0.179 , 0.218	Depositor DCC
R_{free} test set	4631 reflections (4.98%)	DCC
Wilson B-factor (Å ²)	29.3	Xtriage
Anisotropy	0.109	Xtriage
Bulk solvent k_{sol} (e/Å ³), B_{sol} (Å ²)	0.36 , 54.8	EDS
L-test for twinning ²	$\langle L \rangle = 0.47$, $\langle L^2 \rangle = 0.29$	Xtriage
Estimated twinning fraction	0.036 for -h,-k,l	Xtriage
F_o, F_c correlation	0.95	EDS
Total number of atoms	9046	wwPDB-VP
Average B, all atoms (Å ²)	34.0	wwPDB-VP

Xtriage's analysis on translational NCS is as follows: *The largest off-origin peak in the Patterson function is 4.66% of the height of the origin peak. No significant pseudotranslation is detected.*

¹Intensities estimated from amplitudes.

²Theoretical values of $\langle |L| \rangle$, $\langle L^2 \rangle$ for acentric reflections are 0.5, 0.333 respectively for untwinned datasets, and 0.375, 0.2 for perfectly twinned datasets.

5 Model quality [i](#)

5.1 Standard geometry [i](#)

Bond lengths and bond angles in the following residue types are not validated in this section: SLU, EDO

The Z score for a bond length (or angle) is the number of standard deviations the observed value is removed from the expected value. A bond length (or angle) with $|Z| > 5$ is considered an outlier worth inspection. RMSZ is the root-mean-square of all Z scores of the bond lengths (or angles).

Mol	Chain	Bond lengths		Bond angles	
		RMSZ	# Z >5	RMSZ	# Z >5
1	A	0.40	0/4165	0.52	0/5663
1	B	0.39	0/4282	0.52	1/5810 (0.0%)
All	All	0.40	0/8447	0.52	1/11473 (0.0%)

There are no bond length outliers.

All (1) bond angle outliers are listed below:

Mol	Chain	Res	Type	Atoms	Z	Observed(°)	Ideal(°)
1	B	194	LEU	CA-CB-CG	-5.18	103.38	115.30

There are no chirality outliers.

There are no planarity outliers.

5.2 Too-close contacts [i](#)

In the following table, the Non-H and H(model) columns list the number of non-hydrogen atoms and hydrogen atoms in the chain respectively. The H(added) column lists the number of hydrogen atoms added and optimized by MolProbity. The Clashes column lists the number of clashes within the asymmetric unit, whereas Symm-Clashes lists symmetry related clashes.

Mol	Chain	Non-H	H(model)	H(added)	Clashes	Symm-Clashes
1	A	4061	0	3972	41	0
1	B	4183	0	4155	74	0
2	A	40	0	17	1	0
2	B	40	0	17	0	0
3	A	4	0	6	0	0
3	B	20	0	30	2	0
4	A	356	0	0	5	1
4	B	342	0	0	9	1

Continued on next page...

Continued from previous page...

Mol	Chain	Non-H	H(model)	H(added)	Clashes	Symm-Clashes
All	All	9046	0	8197	114	1

The all-atom clashscore is defined as the number of clashes found per 1000 atoms (including hydrogen atoms). The all-atom clashscore for this structure is 7.

All (114) close contacts within the same asymmetric unit are listed below, sorted by their clash magnitude.

Atom-1	Atom-2	Interatomic distance (Å)	Clash overlap (Å)
1:B:62:ARG:HG2	1:B:172:LEU:HD11	1.33	1.04
1:B:463:ASN:HB2	1:B:493:MET:CE	2.10	0.81
1:B:229:ASN:ND2	4:B:701:HOH:O	2.00	0.78
1:A:465:PHE:HB2	1:A:488:GLU:HG2	1.66	0.77
1:B:62:ARG:HG2	1:B:172:LEU:CD1	2.12	0.77
1:B:494:THR:HG23	1:B:497:GLU:H	1.50	0.75
1:B:62:ARG:CG	1:B:172:LEU:HD11	2.15	0.73
1:A:455:GLU:HG3	1:A:469:VAL:HG23	1.71	0.73
1:B:524:LYS:HE2	1:B:530:LEU:HD22	1.71	0.71
1:B:461:HIS:O	4:B:702:HOH:O	2.08	0.70
1:A:321:LYS:HE3	1:A:359:PRO:HB2	1.74	0.70
1:B:290:THR:HG23	1:B:528:GLY:HA2	1.74	0.70
1:B:118:MET:CE	1:B:123:PRO:HG3	2.21	0.69
1:B:463:ASN:HB2	1:B:493:MET:HE2	1.72	0.69
1:B:118:MET:HE2	1:B:123:PRO:HG3	1.76	0.66
1:B:349:ILE:CD1	1:B:392:VAL:HG11	2.27	0.63
1:B:290:THR:CG2	1:B:528:GLY:HA2	2.29	0.62
1:A:439:LYS:HG2	4:A:802:HOH:O	2.00	0.62
1:B:463:ASN:HB2	1:B:493:MET:HE1	1.81	0.62
1:B:111:GLU:OE2	1:B:138:ASN:ND2	2.30	0.61
1:B:116:ASN:ND2	4:B:712:HOH:O	2.32	0.61
1:A:206:LYS:NZ	4:A:702:HOH:O	2.34	0.61
1:B:349:ILE:CD1	1:B:392:VAL:HG21	2.31	0.60
1:B:549:LYS:O	1:B:550:LEU:HB2	2.01	0.60
1:B:524:LYS:HE2	1:B:530:LEU:CD2	2.31	0.60
1:B:232:ILE:HG13	1:B:233:PRO:HD2	1.83	0.60
1:B:106:ASN:OD1	1:B:108:ILE:HG12	2.03	0.59
1:A:495:GLU:HG3	1:A:516:VAL:HB	1.84	0.59
1:B:349:ILE:HD13	1:B:392:VAL:HG21	1.85	0.59
1:B:463:ASN:CB	1:B:493:MET:HE2	2.32	0.59
1:A:482:ALA:HB2	1:A:514:GLY:HA3	1.86	0.57
1:A:461:HIS:ND1	1:A:462:PRO:HD2	2.19	0.57
1:A:200:GLY:HA2	4:A:702:HOH:O	2.04	0.57

Continued on next page...

Continued from previous page...

Atom-1	Atom-2	Interatomic distance (Å)	Clash overlap (Å)
1:B:116:ASN:HB2	4:B:989:HOH:O	2.05	0.57
1:A:339:GLY:HA3	2:A:601:SLU:C5	2.35	0.56
1:A:422:ASP:OD1	1:A:437[A]:ARG:HD2	2.05	0.56
1:B:77:ARG:HG2	1:B:101:ALA:HB3	1.88	0.55
1:B:273:PHE:CZ	1:B:287:LEU:HD21	2.42	0.54
1:B:349:ILE:HD11	1:B:392:VAL:HG11	1.88	0.54
1:B:387:ARG:HH11	3:B:606:EDO:H12	1.72	0.54
1:B:494:THR:HG22	1:B:497:GLU:CD	2.28	0.54
1:A:26:LEU:HD23	1:A:257:ILE:HG12	1.90	0.53
1:A:204:LEU:HD12	1:A:204:LEU:H	1.74	0.53
1:B:312:ILE:HG13	1:B:333:LEU:HD11	1.89	0.53
1:B:290:THR:CG2	1:B:524:LYS:HD3	2.39	0.53
1:B:118:MET:HE2	1:B:123:PRO:CG	2.38	0.52
1:B:111:GLU:CD	1:B:138:ASN:HD22	2.13	0.52
1:B:494:THR:HG22	1:B:497:GLU:CG	2.39	0.52
1:A:442:ILE:HB	1:A:449:VAL:HB	1.91	0.52
1:B:147:GLN:HG3	4:B:749:HOH:O	2.11	0.51
1:B:96:LEU:HD23	4:B:706:HOH:O	2.12	0.50
1:B:507:THR:HG23	1:B:509:ALA:H	1.76	0.50
1:B:231:ILE:HD13	3:B:603:EDO:H21	1.94	0.49
1:B:349:ILE:HD12	1:B:392:VAL:HG11	1.93	0.49
1:B:199:SER:HA	1:B:205:PRO:HA	1.95	0.49
1:B:288:VAL:HG11	1:B:527:THR:HA	1.94	0.49
1:B:237:ILE:HG13	1:B:284:THR:HB	1.95	0.49
1:B:457:ILE:HD13	1:B:506:VAL:CG1	2.43	0.48
1:B:353:PRO:HB2	1:B:356:ASP:HB3	1.96	0.48
1:A:168:VAL:HG13	1:A:172:LEU:HD12	1.94	0.48
1:B:131:LYS:HE3	4:B:731:HOH:O	2.13	0.48
1:B:273:PHE:HZ	1:B:287:LEU:HD21	1.79	0.47
1:A:349:ILE:H	1:A:349:ILE:HD13	1.79	0.47
1:B:494:THR:CG2	1:B:497:GLU:HG3	2.44	0.47
1:B:110:ASN:N	1:B:113:GLU:OE1	2.35	0.47
1:B:118:MET:HE3	1:B:123:PRO:HG3	1.97	0.47
1:B:367:PRO:O	1:B:368:PHE:HB2	2.15	0.46
1:B:290:THR:HG21	1:B:524:LYS:HD3	1.97	0.46
1:B:397:ILE:HD12	4:B:983:HOH:O	2.13	0.46
1:A:320:SER:OG	1:A:323:VAL:HG23	2.16	0.46
1:A:316:GLY:O	1:A:529:LYS:NZ	2.40	0.46
1:A:290:THR:HG21	1:A:524:LYS:HD3	1.98	0.46
1:A:523:PRO:HG2	1:A:535:ILE:CG1	2.46	0.45
1:A:482:ALA:HB3	1:A:539:LEU:HD13	1.98	0.45

Continued on next page...

Continued from previous page...

Atom-1	Atom-2	Interatomic distance (Å)	Clash overlap (Å)
1:B:457:ILE:HD13	1:B:506:VAL:HG12	1.97	0.45
1:B:130:LYS:HD3	1:B:158:TYR:CE1	2.52	0.45
1:A:455:GLU:HG3	1:A:469:VAL:CG2	2.44	0.45
1:B:193:ALA:HB2	1:B:212:HIS:CD2	2.52	0.45
1:B:290:THR:HG23	1:B:528:GLY:CA	2.45	0.44
1:B:358:LYS:HE2	1:B:431:HIS:ND1	2.32	0.44
1:A:62:ARG:NH2	1:A:178:GLU:OE2	2.45	0.44
1:A:506:VAL:HG21	1:A:510:LYS:O	2.17	0.44
1:B:333:LEU:HB3	1:B:334:PRO:HD2	1.99	0.44
1:B:550:LEU:N	1:B:550:LEU:HD12	2.33	0.44
1:B:484:VAL:HA	1:B:517:VAL:O	2.18	0.44
1:A:65:GLU:HG2	1:A:176:PHE:CE1	2.53	0.44
1:B:506:VAL:HG23	1:B:507:THR:O	2.17	0.44
1:A:373:VAL:HG13	1:A:388:GLY:C	2.38	0.43
1:B:435:VAL:O	1:B:436:ASP:HB2	2.17	0.43
1:A:485:VAL:HG12	1:A:516:VAL:HG13	1.99	0.43
1:B:494:THR:OG1	1:B:495:GLU:N	2.50	0.43
1:B:73:ASN:HB2	4:B:943:HOH:O	2.17	0.43
1:A:135:LYS:HG3	4:A:895:HOH:O	2.17	0.43
1:A:9:LYS:HE2	4:A:705:HOH:O	2.19	0.43
1:B:118:MET:HE3	1:B:126:VAL:HG22	2.00	0.43
1:A:16:PRO:CG	1:B:232:ILE:HD12	2.48	0.43
1:A:485:VAL:HG12	1:A:516:VAL:CG1	2.49	0.42
1:A:457:ILE:CD1	1:A:506:VAL:CG1	2.98	0.42
1:A:61:VAL:HG13	1:A:181:PHE:CG	2.55	0.42
1:B:157:ASP:OD1	1:B:162:GLN:HA	2.19	0.42
1:B:312:ILE:HG13	1:B:333:LEU:CD1	2.49	0.42
1:A:65:GLU:HG3	1:A:69:ARG:HE	1.85	0.42
1:A:531:ASP:O	1:A:535:ILE:HG13	2.20	0.42
1:A:79:VAL:HG23	1:A:123:PRO:HB3	2.01	0.41
1:B:65:GLU:HG2	1:B:176:PHE:CE1	2.55	0.41
1:A:63:LEU:HA	1:A:63:LEU:HD23	1.84	0.41
1:A:484:VAL:HA	1:A:517:VAL:O	2.20	0.41
1:B:107:ASP:OD2	1:B:131:LYS:NZ	2.46	0.41
1:B:118:MET:CE	1:B:123:PRO:CG	2.93	0.41
1:A:240:VAL:HG22	1:A:240:VAL:O	2.20	0.41
1:B:550:LEU:CD1	1:B:550:LEU:N	2.84	0.41
1:A:114:LEU:HD21	1:A:136:ILE:HD13	2.02	0.41
1:A:173:PRO:HA	1:A:174:PRO:HD3	1.95	0.40

All (1) symmetry-related close contacts are listed below. The label for Atom-2 includes the symmetry operator and encoded unit-cell translations to be applied.

Atom-1	Atom-2	Interatomic distance (Å)	Clash overlap (Å)
4:A:981:HOH:O	4:B:956:HOH:O[4_545]	2.10	0.10

5.3 Torsion angles [i](#)

5.3.1 Protein backbone [i](#)

In the following table, the Percentiles column shows the percent Ramachandran outliers of the chain as a percentile score with respect to all X-ray entries followed by that with respect to entries of similar resolution.

The Analysed column shows the number of residues for which the backbone conformation was analysed, and the total number of residues.

Mol	Chain	Analysed	Favoured	Allowed	Outliers	Percentiles	
1	A	530/550 (96%)	514 (97%)	14 (3%)	2 (0%)	38	33
1	B	541/550 (98%)	528 (98%)	13 (2%)	0	100	100
All	All	1071/1100 (97%)	1042 (97%)	27 (2%)	2 (0%)	51	48

All (2) Ramachandran outliers are listed below:

Mol	Chain	Res	Type
1	A	299	THR
1	A	298	SER

5.3.2 Protein sidechains [i](#)

In the following table, the Percentiles column shows the percent sidechain outliers of the chain as a percentile score with respect to all X-ray entries followed by that with respect to entries of similar resolution.

The Analysed column shows the number of residues for which the sidechain conformation was analysed, and the total number of residues.

Mol	Chain	Analysed	Rotameric	Outliers	Percentiles	
1	A	420/463 (91%)	409 (97%)	11 (3%)	51	52
1	B	443/463 (96%)	440 (99%)	3 (1%)	87	90
All	All	863/926 (93%)	849 (98%)	14 (2%)	70	72

All (14) residues with a non-rotameric sidechain are listed below:

Mol	Chain	Res	Type
1	A	56	TYR
1	A	59[A]	MET
1	A	59[B]	MET
1	A	63	LEU
1	A	257	ILE
1	A	302	ASP
1	A	349	ILE
1	A	387	ARG
1	A	414	LYS
1	A	448	GLN
1	A	505	GLN
1	B	194	LEU
1	B	232	ILE
1	B	488	GLU

Some sidechains can be flipped to improve hydrogen bonding and reduce clashes. All (1) such sidechains are listed below:

Mol	Chain	Res	Type
1	B	463	ASN

5.3.3 RNA [i](#)

There are no RNA molecules in this entry.

5.4 Non-standard residues in protein, DNA, RNA chains [i](#)

There are no non-standard protein/DNA/RNA residues in this entry.

5.5 Carbohydrates [i](#)

There are no carbohydrates in this entry.

5.6 Ligand geometry [i](#)

8 ligands are modelled in this entry.

In the following table, the Counts columns list the number of bonds (or angles) for which Mogul statistics could be retrieved, the number of bonds (or angles) that are observed in the model and the number of bonds (or angles) that are defined in the chemical component dictionary. The Link column lists molecule types, if any, to which the group is linked. The Z score for a bond length

(or angle) is the number of standard deviations the observed value is removed from the expected value. A bond length (or angle) with $|Z| > 2$ is considered an outlier worth inspection. RMSZ is the root-mean-square of all Z scores of the bond lengths (or angles).

Mol	Type	Chain	Res	Link	Bond lengths			Bond angles		
					Counts	RMSZ	$\# Z > 2$	Counts	RMSZ	$\# Z > 2$
2	SLU	A	601	-	39,45,45	1.54	9 (23%)	41,68,68	2.83	12 (29%)
3	EDO	A	602	-	3,3,3	0.45	0	2,2,2	0.42	0
2	SLU	B	601	-	39,45,45	1.63	6 (15%)	41,68,68	2.79	11 (26%)
3	EDO	B	602	-	3,3,3	0.42	0	2,2,2	0.38	0
3	EDO	B	603	-	3,3,3	0.42	0	2,2,2	0.45	0
3	EDO	B	604	-	3,3,3	0.49	0	2,2,2	0.21	0
3	EDO	B	605	-	3,3,3	0.51	0	2,2,2	0.16	0
3	EDO	B	606	-	3,3,3	0.42	0	2,2,2	0.47	0

In the following table, the Chirals column lists the number of chiral outliers, the number of chiral centers analysed, the number of these observed in the model and the number defined in the chemical component dictionary. Similar counts are reported in the Torsion and Rings columns. '-' means no outliers of that kind were identified.

Mol	Type	Chain	Res	Link	Chirals	Torsions	Rings
2	SLU	A	601	-	-	0/10/39/39	0/6/6/6
3	EDO	A	602	-	-	0/1/1/1	0/0/0/0
2	SLU	B	601	-	-	0/10/39/39	0/6/6/6
3	EDO	B	602	-	-	0/1/1/1	0/0/0/0
3	EDO	B	603	-	-	0/1/1/1	0/0/0/0
3	EDO	B	604	-	-	0/1/1/1	0/0/0/0
3	EDO	B	605	-	-	0/1/1/1	0/0/0/0
3	EDO	B	606	-	-	0/1/1/1	0/0/0/0

All (15) bond length outliers are listed below:

Mol	Chain	Res	Type	Atoms	Z	Observed(Å)	Ideal(Å)
2	B	601	SLU	O20-S17	-4.69	1.52	1.59
2	B	601	SLU	C16-N40	-4.15	1.33	1.39
2	A	601	SLU	O20-S17	-4.09	1.53	1.59
2	A	601	SLU	C16-N40	-3.39	1.34	1.39
2	A	601	SLU	C36-N37	-2.13	1.30	1.34
2	A	601	SLU	O18-S17	2.07	1.44	1.42
2	A	601	SLU	C11-S12	2.09	1.76	1.73
2	A	601	SLU	C13-S12	2.28	1.74	1.70
2	A	601	SLU	C8-S9	2.54	1.77	1.73
2	A	601	SLU	O26-C25	2.58	1.44	1.41
2	B	601	SLU	C8-S9	2.72	1.77	1.73

Continued on next page...

Continued from previous page...

Mol	Chain	Res	Type	Atoms	Z	Observed(Å)	Ideal(Å)
2	A	601	SLU	S17-N40	3.09	1.63	1.59
2	B	601	SLU	O26-C25	3.24	1.45	1.41
2	B	601	SLU	S17-N40	3.24	1.63	1.59
2	B	601	SLU	C13-S12	3.29	1.75	1.70

All (23) bond angle outliers are listed below:

Mol	Chain	Res	Type	Atoms	Z	Observed(°)	Ideal(°)
2	A	601	SLU	C14-C13-S12	-7.57	102.49	111.79
2	B	601	SLU	C14-C13-S12	-7.22	102.93	111.79
2	A	601	SLU	N31-C30-N29	-7.17	122.61	128.86
2	B	601	SLU	N31-C30-N29	-7.10	122.67	128.86
2	A	601	SLU	C3-C4-S9	-5.73	104.84	112.03
2	B	601	SLU	C3-C4-S9	-5.45	105.19	112.03
2	A	601	SLU	C21-O20-S17	-4.92	108.45	118.03
2	B	601	SLU	C21-O20-S17	-4.07	110.09	118.03
2	B	601	SLU	O18-S17-N40	-3.94	102.95	108.47
2	A	601	SLU	O19-S17-N40	-3.92	102.98	108.47
2	A	601	SLU	C32-C33-N37	-3.05	106.46	109.41
2	B	601	SLU	O19-S17-N40	-2.99	104.28	108.47
2	B	601	SLU	C32-C33-N37	-2.41	107.08	109.41
2	A	601	SLU	C14-C16-N40	2.32	116.66	113.97
2	A	601	SLU	O20-S17-N40	2.82	112.34	106.34
2	B	601	SLU	C4-C3-N7	3.00	114.95	108.04
2	A	601	SLU	C4-C3-N7	3.15	115.30	108.04
2	A	601	SLU	O19-S17-O18	3.61	124.99	121.30
2	A	601	SLU	C5-C4-S9	3.87	131.96	124.84
2	B	601	SLU	C5-C4-S9	4.07	132.34	124.84
2	B	601	SLU	O19-S17-O18	5.27	126.69	121.30
2	A	601	SLU	C8-N7-C3	7.68	118.89	103.83
2	B	601	SLU	C8-N7-C3	7.82	119.18	103.83

There are no chirality outliers.

There are no torsion outliers.

There are no ring outliers.

3 monomers are involved in 3 short contacts:

Mol	Chain	Res	Type	Clashes	Symm-Clashes
2	A	601	SLU	1	0
3	B	603	EDO	1	0
3	B	606	EDO	1	0

5.7 Other polymers [i](#)

There are no such residues in this entry.

5.8 Polymer linkage issues [i](#)

There are no chain breaks in this entry.

6 Fit of model and data ⓘ

6.1 Protein, DNA and RNA chains ⓘ

In the following table, the column labelled ‘#RSRZ> 2’ contains the number (and percentage) of RSRZ outliers, followed by percent RSRZ outliers for the chain as percentile scores relative to all X-ray entries and entries of similar resolution. The OWAB column contains the minimum, median, 95th percentile and maximum values of the occupancy-weighted average B-factor per residue. The column labelled ‘Q< 0.9’ lists the number of (and percentage) of residues with an average occupancy less than 0.9.

Mol	Chain	Analysed	<RSRZ>	#RSRZ>2	OWAB(Å ²)	Q<0.9
1	A	532/550 (96%)	0.37	62 (11%) 5 5	19, 28, 69, 79	0
1	B	543/550 (98%)	-0.01	25 (4%) 33 33	17, 31, 56, 73	0
All	All	1075/1100 (97%)	0.18	87 (8%) 13 13	17, 30, 65, 79	0

All (87) RSRZ outliers are listed below:

Mol	Chain	Res	Type	RSRZ
1	A	487	LEU	8.2
1	A	486	VAL	6.7
1	A	202	THR	6.3
1	A	174	PRO	5.9
1	A	508	THR	5.6
1	A	462	PRO	5.4
1	A	542	ALA	5.2
1	A	298	SER	5.1
1	A	517	VAL	5.0
1	A	518	PHE	5.0
1	B	447	TYR	4.8
1	A	498	ILE	4.6
1	A	516	VAL	4.5
1	A	201	SER	4.5
1	B	476	ASP	4.5
1	A	175	GLY	4.4
1	A	302	ASP	4.4
1	A	520	ASP	4.3
1	A	299	THR	4.2
1	B	296	ALA	4.2
1	A	297	LYS	4.2
1	A	519	VAL	4.2
1	A	477	ALA	4.1
1	B	299	THR	4.1

Continued on next page...

Continued from previous page...

Mol	Chain	Res	Type	RSRZ
1	B	475	ASP	4.0
1	B	298	SER	3.9
1	B	295	PHE	3.7
1	A	460	GLN	3.6
1	B	446	GLY	3.6
1	A	267	ARG	3.6
1	B	293	SER	3.5
1	A	540	ILE	3.4
1	A	499	VAL	3.4
1	B	445	LYS	3.3
1	A	465	PHE	3.3
1	A	488	GLU	3.3
1	A	46	HIS	3.3
1	A	92	VAL	3.2
1	A	501	TYR	3.2
1	B	489	HIS	3.2
1	A	203	GLY	3.2
1	B	139	VAL	3.1
1	A	301	ILE	3.0
1	A	266	TYR	2.9
1	B	294	PHE	2.9
1	A	476	ASP	2.8
1	A	539	LEU	2.8
1	A	332	HIS	2.8
1	A	444	TYR	2.8
1	A	538	ILE	2.7
1	A	521	GLU	2.7
1	B	462	PRO	2.7
1	A	514	GLY	2.7
1	A	461	HIS	2.7
1	B	444	TYR	2.6
1	A	200	GLY	2.6
1	A	543	LYS	2.5
1	B	490	GLY	2.5
1	B	526	LEU	2.5
1	A	500	ASP	2.5
1	A	272	LEU	2.5
1	A	541	LYS	2.5
1	A	253	LEU	2.4
1	A	496	LYS	2.4
1	A	255	TYR	2.4
1	B	492	THR	2.4

Continued on next page...

Continued from previous page...

Mol	Chain	Res	Type	RSRZ
1	A	485	VAL	2.3
1	A	495	GLU	2.3
1	B	307	SER	2.3
1	A	250	PHE	2.2
1	B	507	THR	2.2
1	B	297	LYS	2.2
1	B	5	LYS	2.2
1	A	502	VAL	2.2
1	A	497	GLU	2.1
1	B	327	VAL	2.1
1	A	504	SER	2.1
1	A	204	LEU	2.1
1	A	256	LEU	2.1
1	A	466	ASP	2.1
1	B	477	ALA	2.1
1	B	302	ASP	2.0
1	A	251	THR	2.0
1	A	537	GLU	2.0
1	A	357	ASP	2.0
1	A	473	PRO	2.0
1	A	93	LEU	2.0

6.2 Non-standard residues in protein, DNA, RNA chains ⓘ

There are no non-standard protein/DNA/RNA residues in this entry.

6.3 Carbohydrates ⓘ

There are no carbohydrates in this entry.

6.4 Ligands ⓘ

In the following table, the Atoms column lists the number of modelled atoms in the group and the number defined in the chemical component dictionary. LLDF column lists the quality of electron density of the group with respect to its neighbouring residues in protein, DNA or RNA chains. The B-factors column lists the minimum, median, 95th percentile and maximum values of B factors of atoms in the group. The column labelled 'Q< 0.9' lists the number of atoms with occupancy less than 0.9.

Mol	Type	Chain	Res	Atoms	RSCC	RSR	LLDF	B-factors(Å ²)	Q<0.9
3	EDO	B	603	4/4	0.85	0.18	3.86	32,33,39,44	0

Continued on next page...

Continued from previous page...

Mol	Type	Chain	Res	Atoms	RSCC	RSR	LLDF	B-factors(\AA^2)	Q<0.9
3	EDO	B	604	4/4	0.93	0.12	1.24	40,42,46,48	0
2	SLU	B	601	40/40	0.97	0.12	-0.39	18,23,29,32	0
3	EDO	A	602	4/4	0.96	0.09	-0.59	38,41,41,44	0
3	EDO	B	602	4/4	0.97	0.08	-0.79	23,25,31,33	0
2	SLU	A	601	40/40	0.98	0.12	-0.98	17,22,24,27	0
3	EDO	B	606	4/4	0.92	0.14	-	36,40,42,42	0
3	EDO	B	605	4/4	0.87	0.14	-	31,37,44,47	0

6.5 Other polymers [i](#)

There are no such residues in this entry.